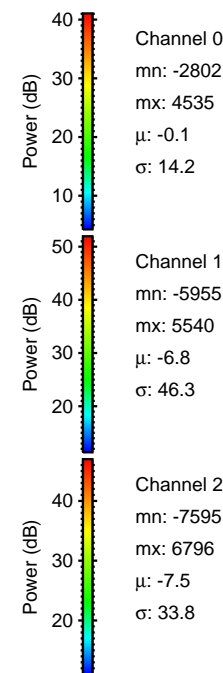
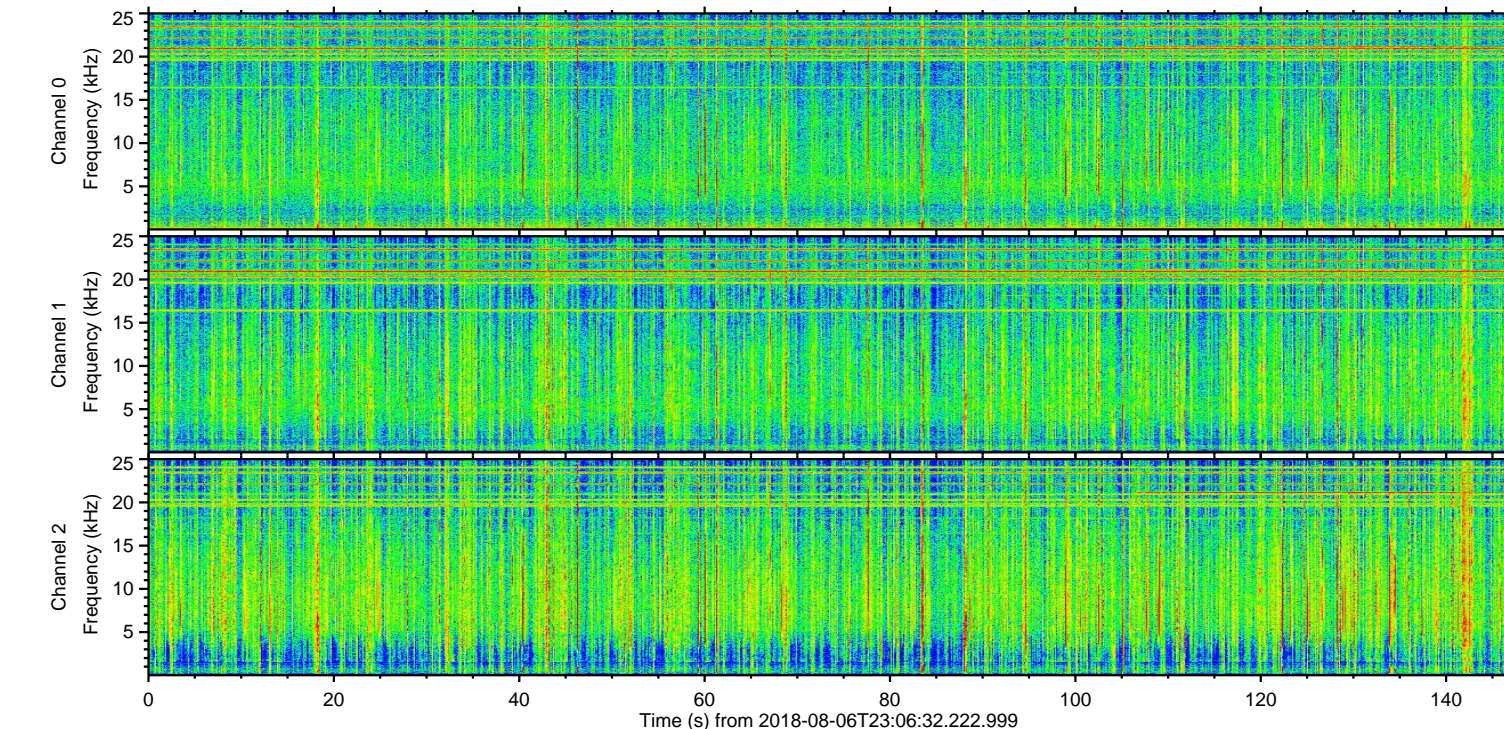
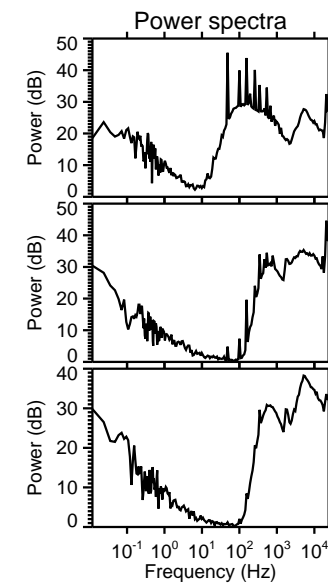
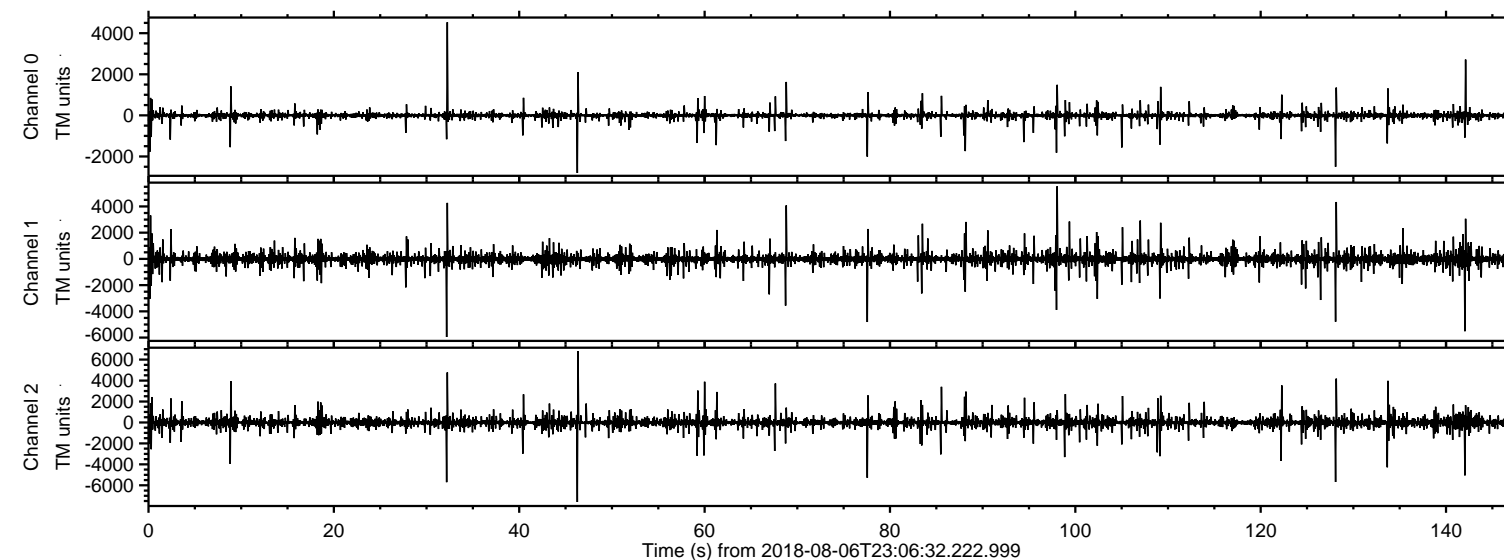
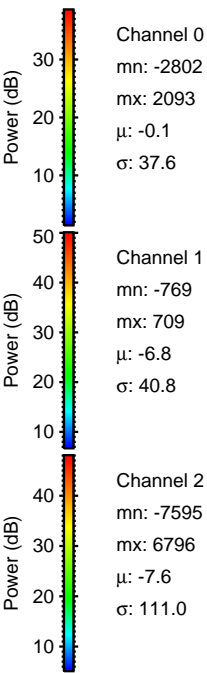
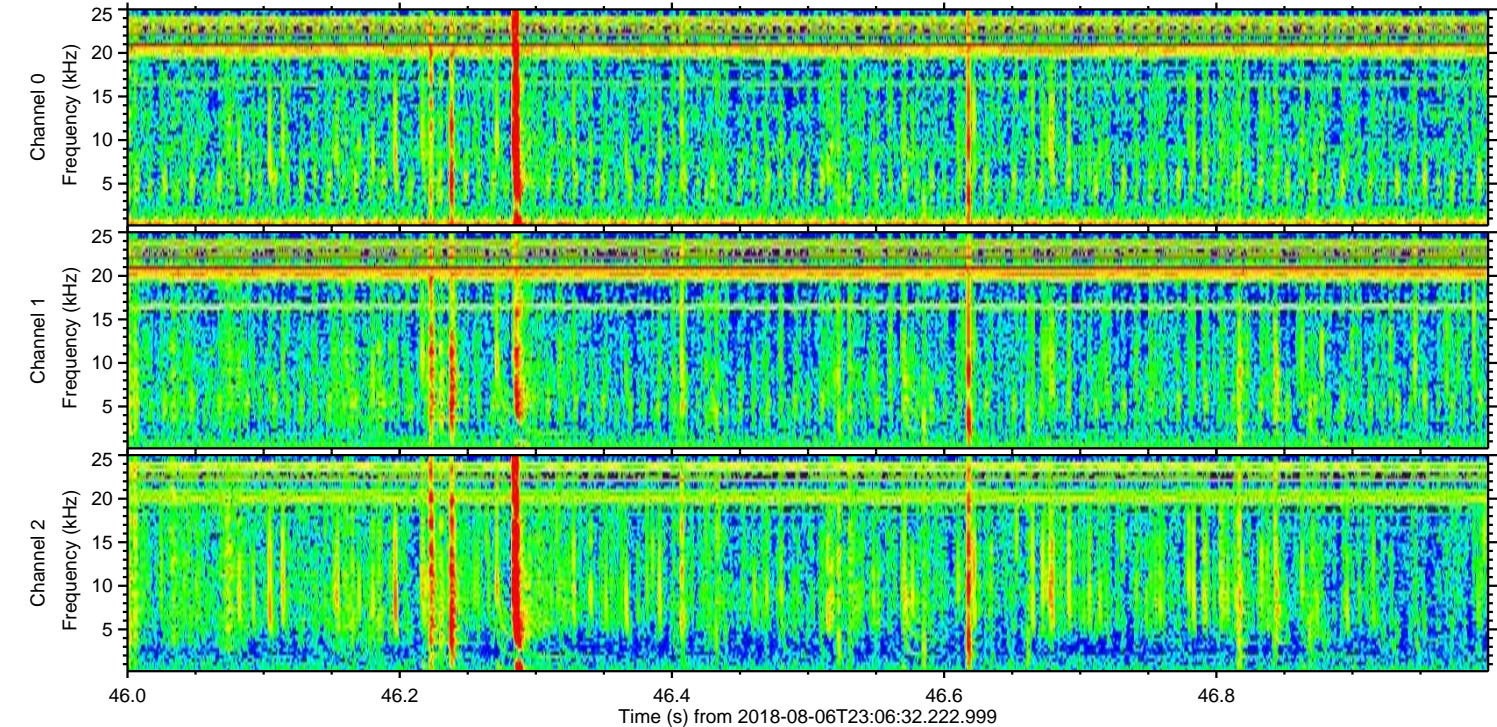
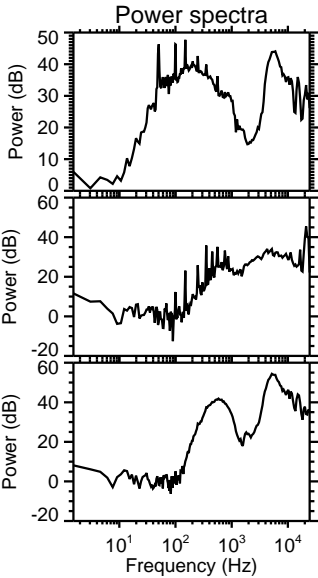
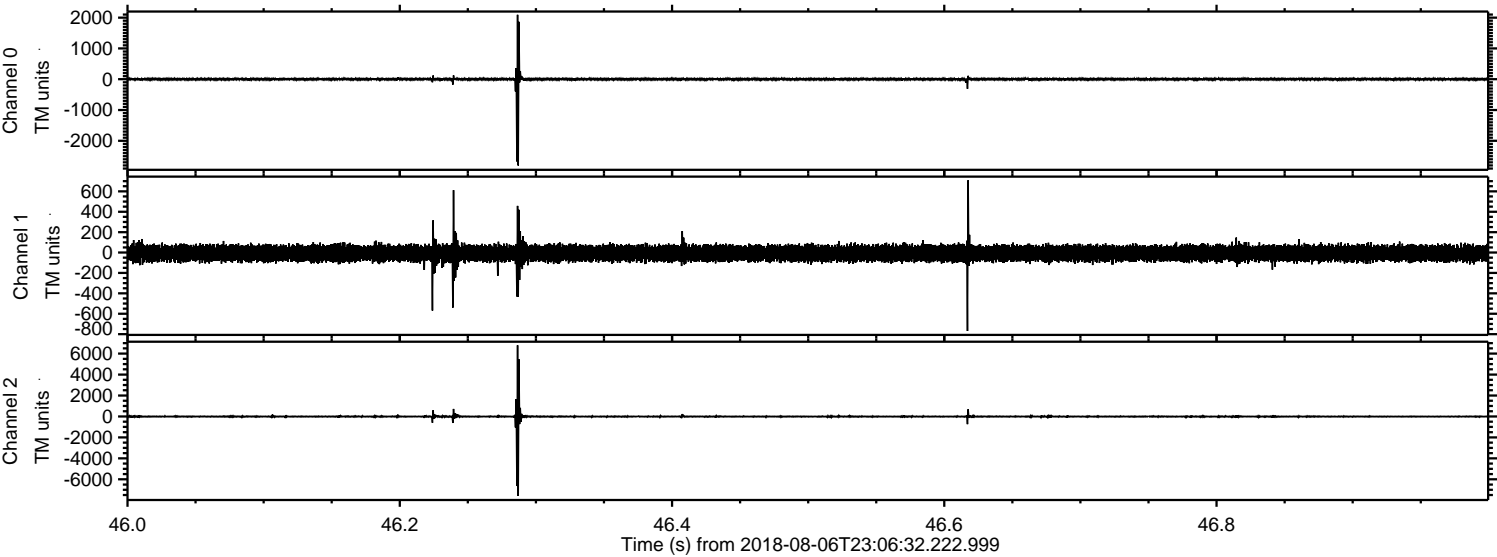


ELMAVAN 3D WAVEFORMS (Measured data sampled at 50 kHz) 51000 packets of 144 samples from 2018-08-06T23:06:32.222.999.

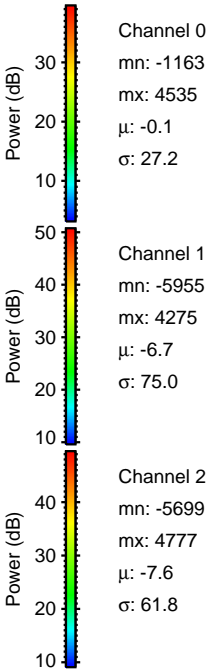
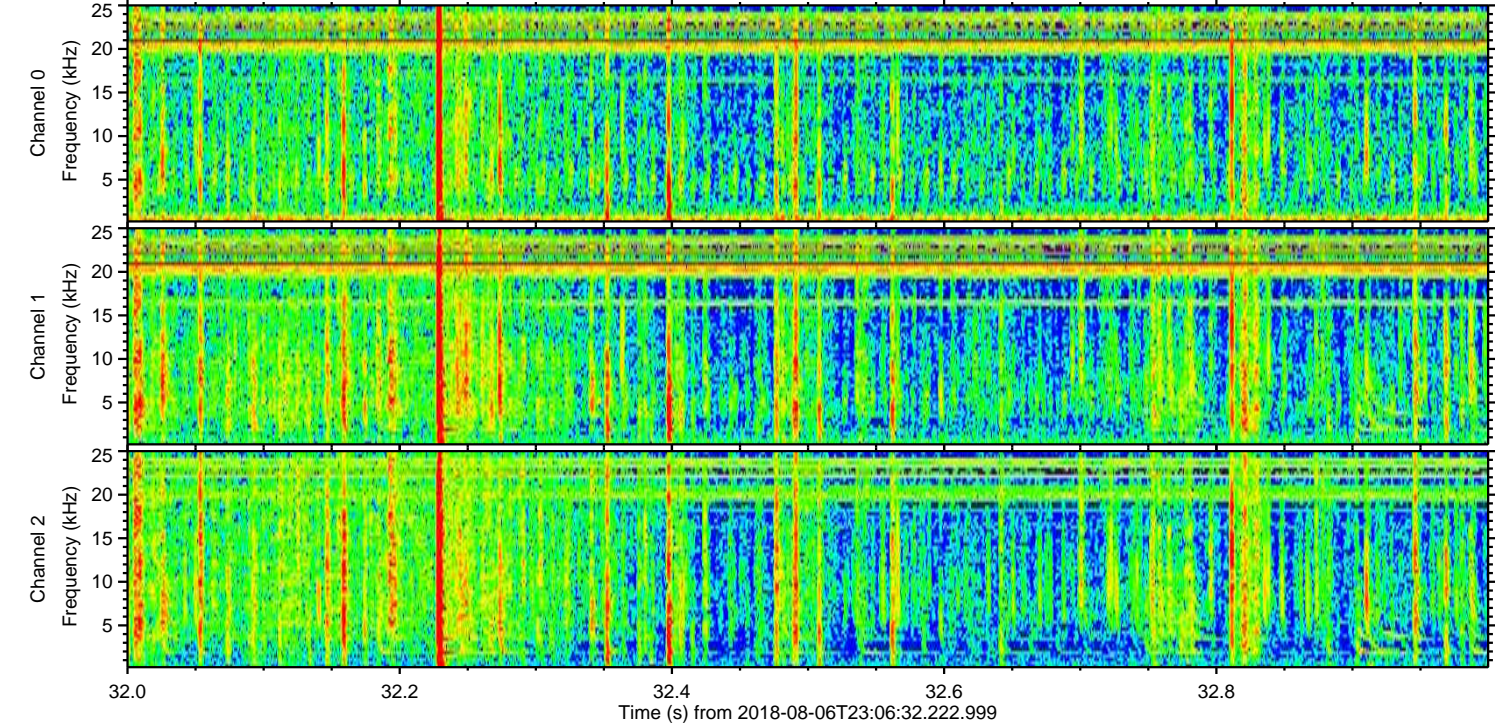
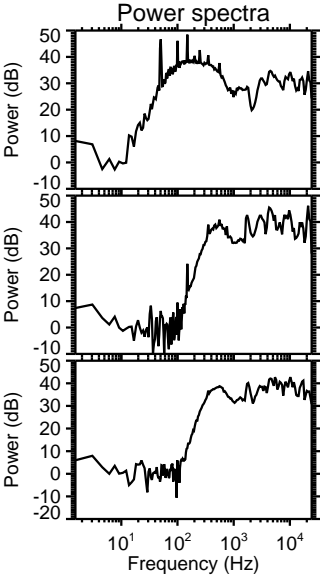
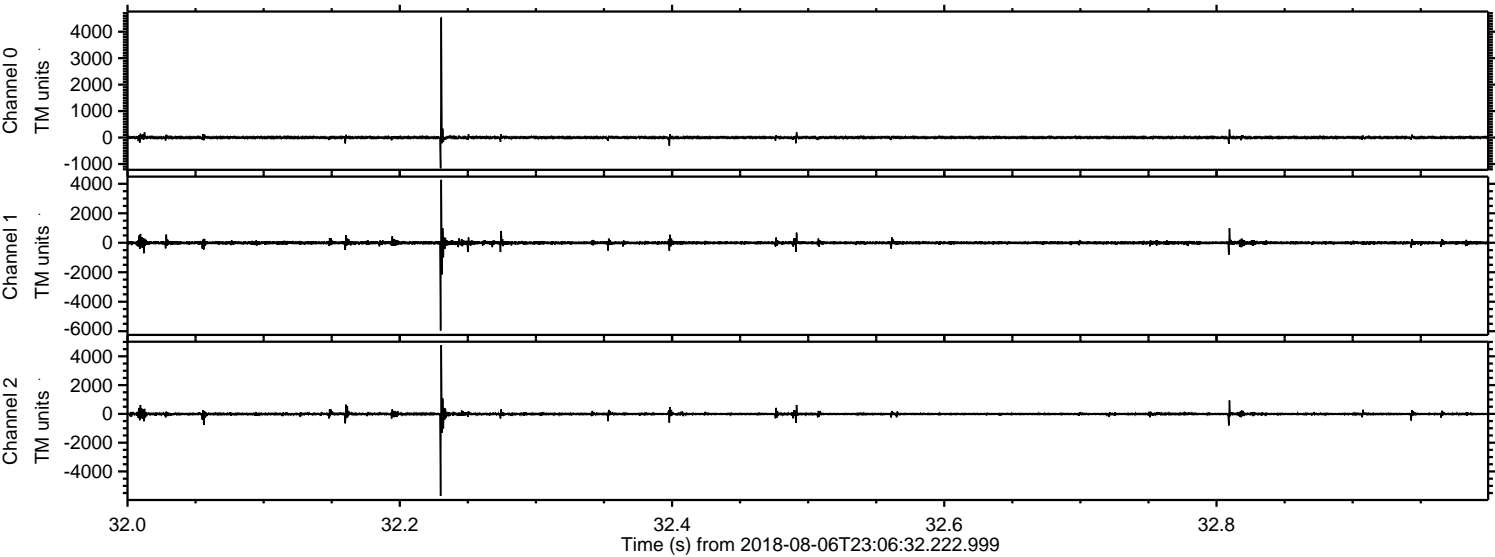
Processed Thu Aug 9 11:22:45 2018 by ELM ver.2012-10-06 from 001__elm20180806_230631__dat00.bin



Processed Thu Aug 9 11:22:53 2018 by ELM ver.2012-10-06 from 001__elm20180806_230631__dat00.bin

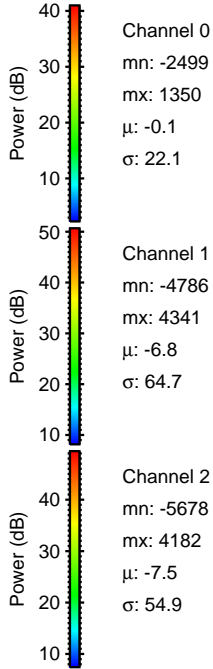
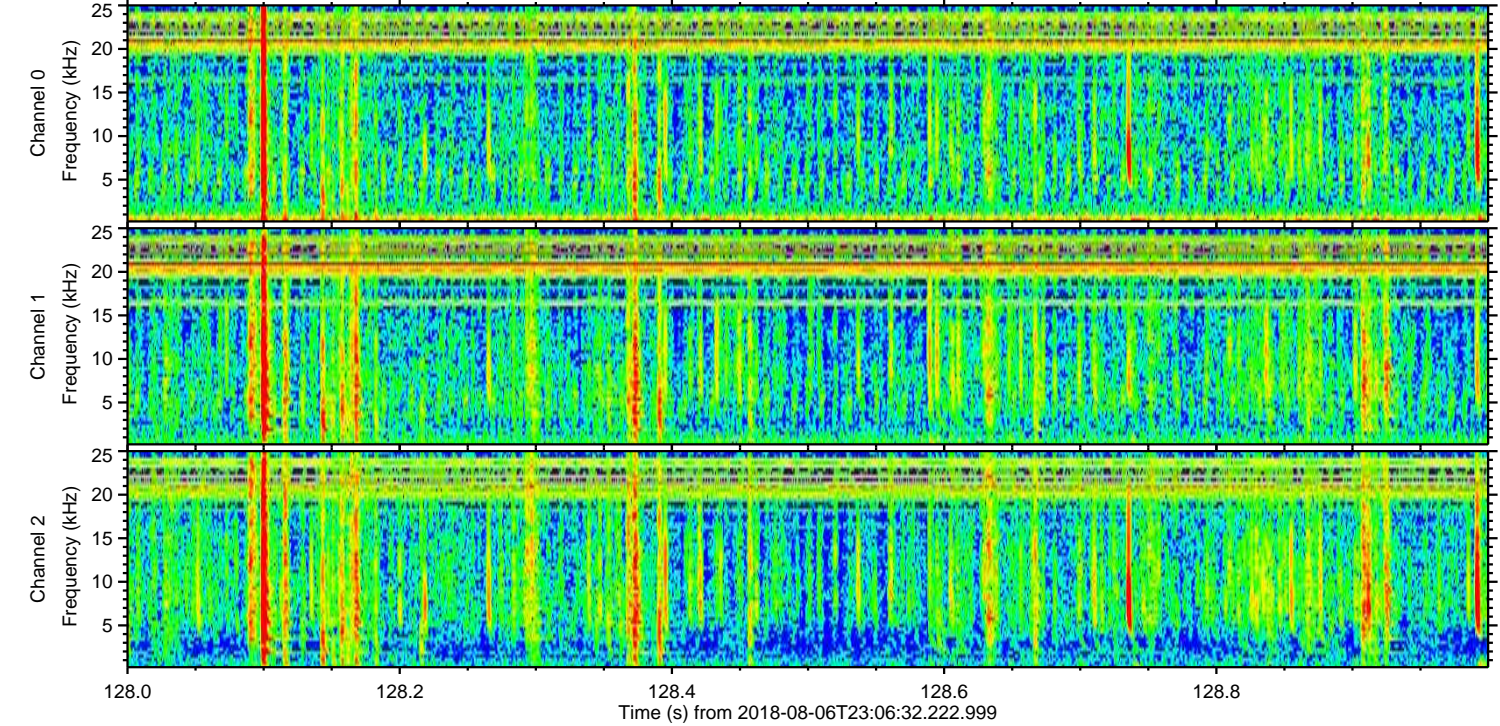
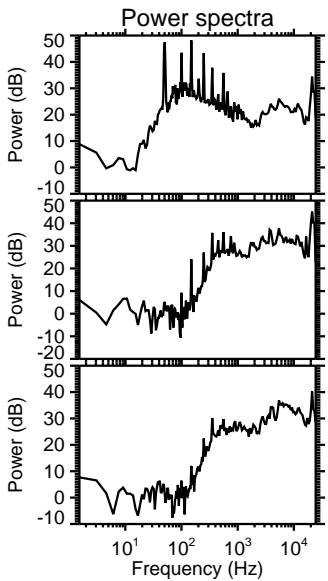
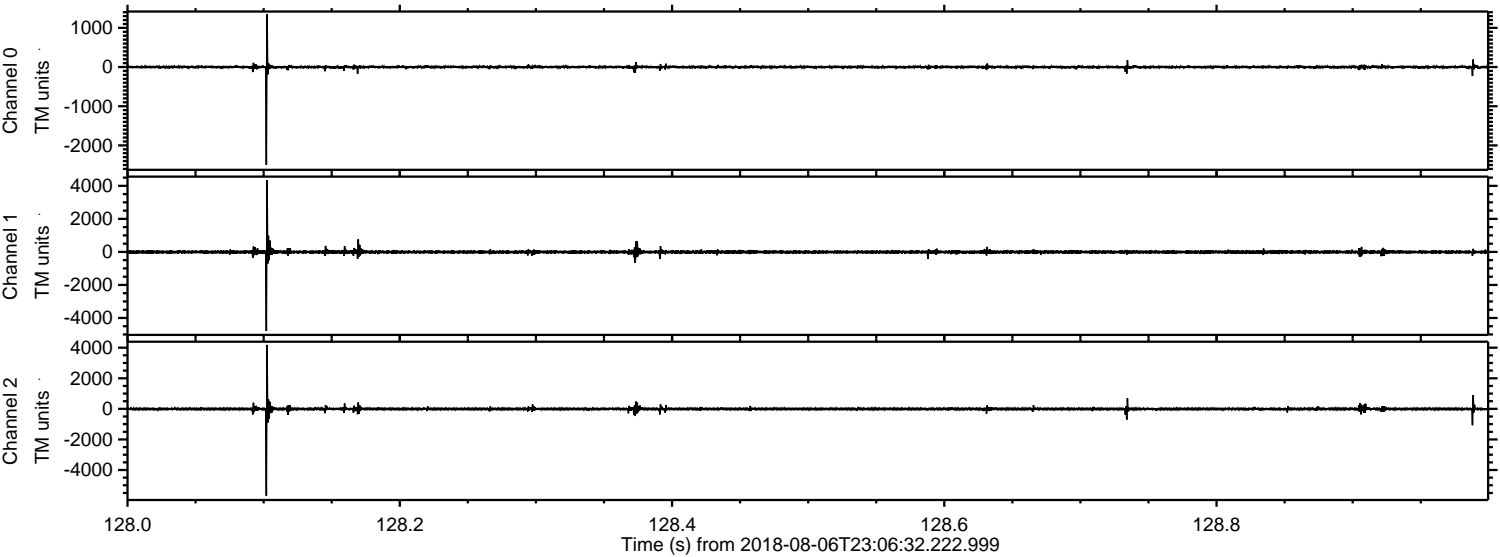


Processed Thu Aug 9 11:22:53 2018 by ELM ver.2012-10-06 from 001__elm20180806_230631__dat00.bin

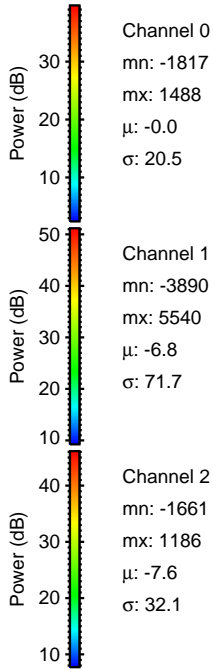
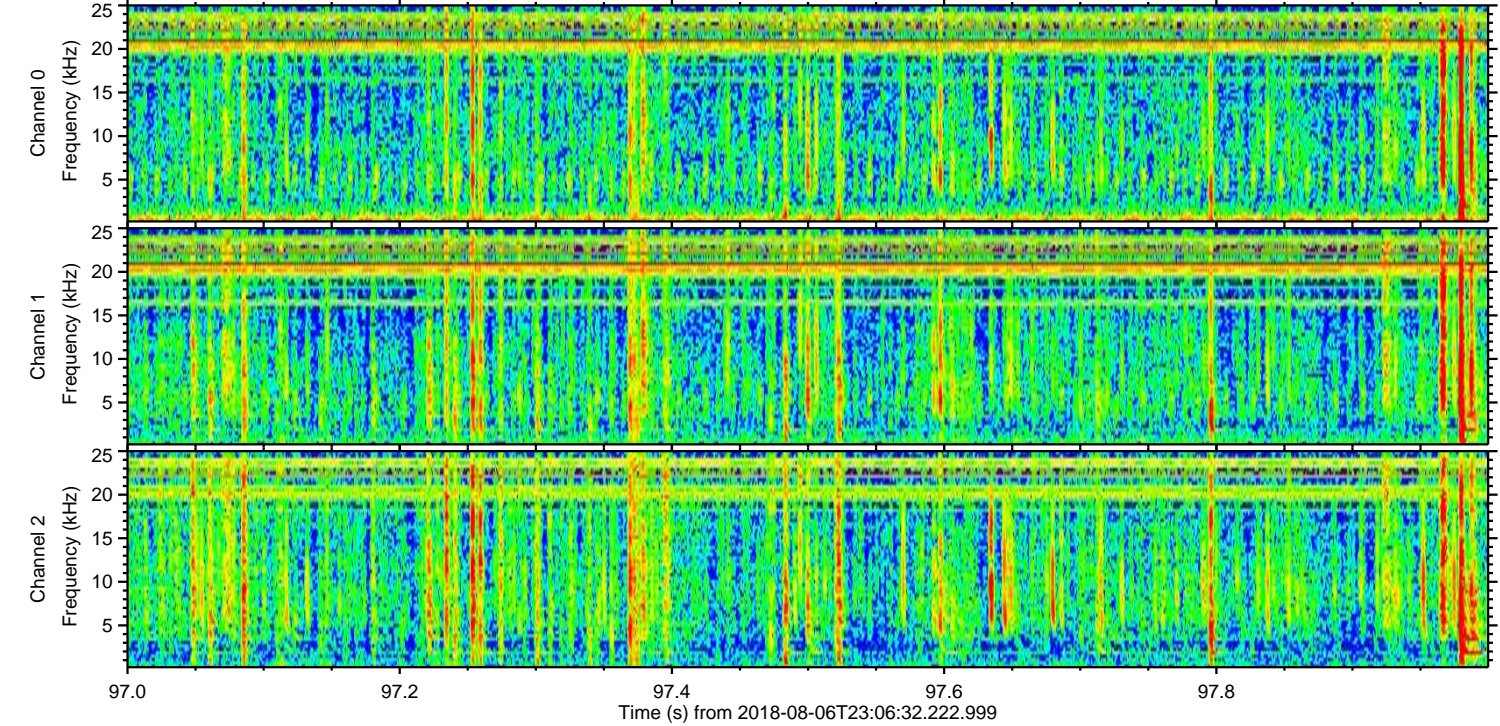
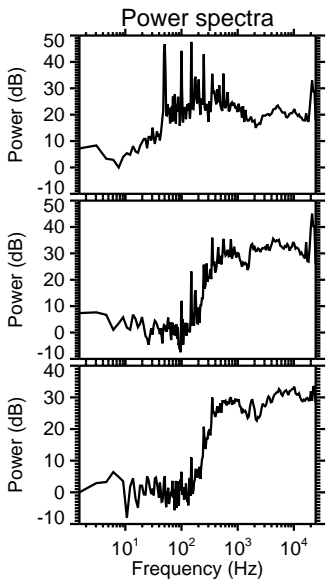
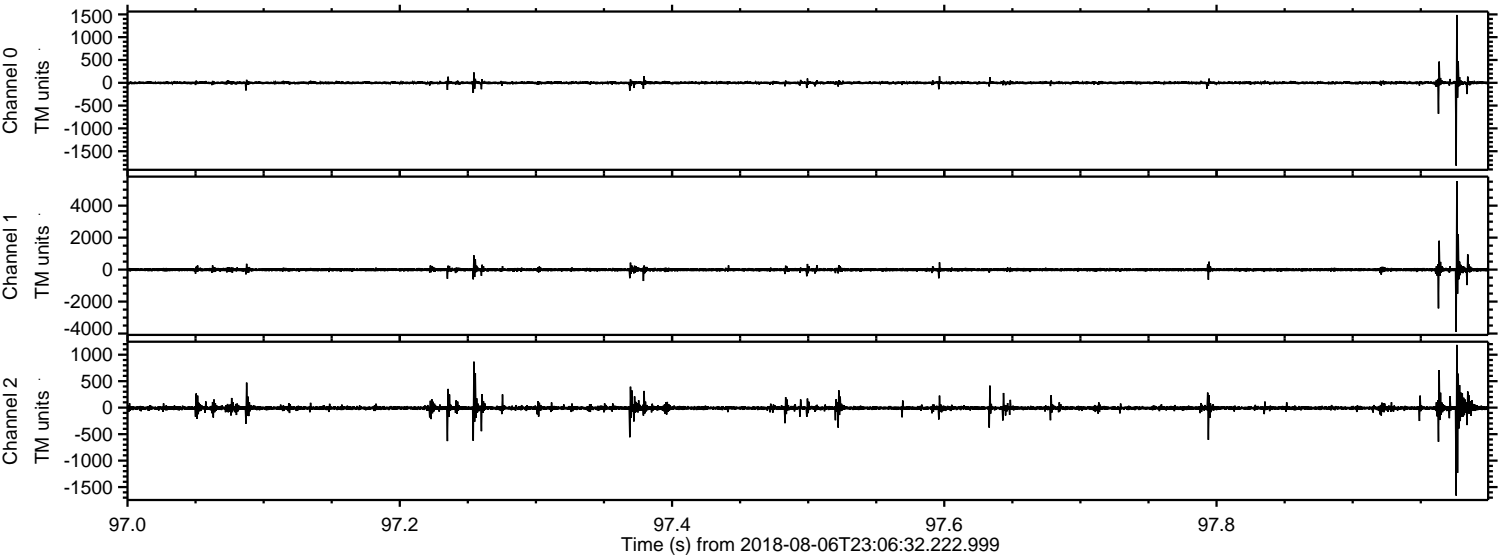


ELMAVAN 3D WAVEFORMS (Measured data sampled at 50 kHz) 51000 packets of 144 samples from 2018-08-06T23:06:32.222.999. Part 129/147

Processed Thu Aug 9 11:22:54 2018 by ELM ver.2012-10-06 from 001__elm20180806_230631__dat00.bin

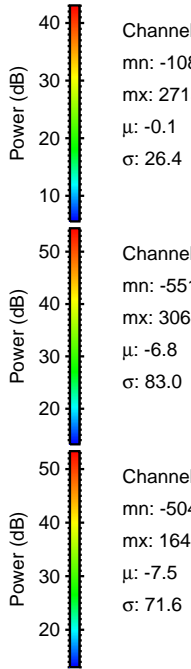
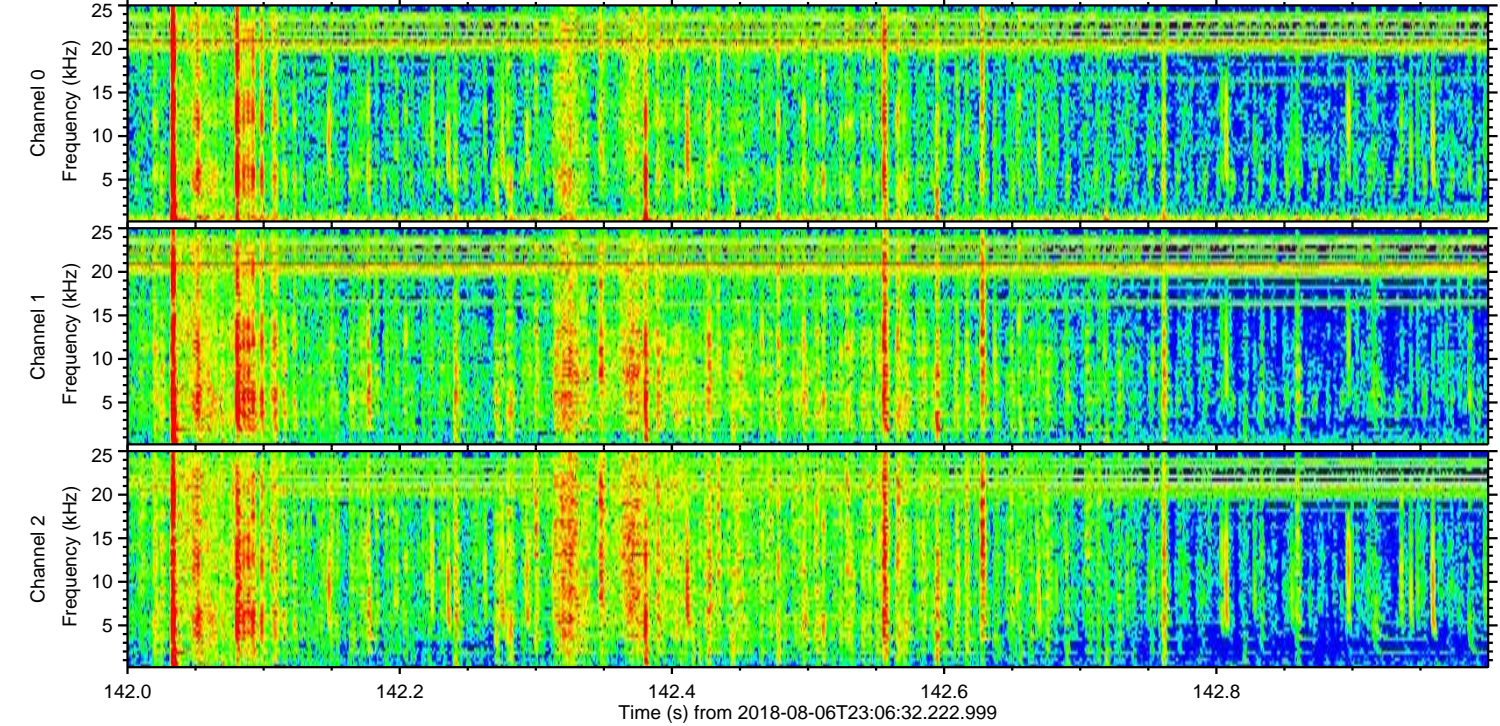
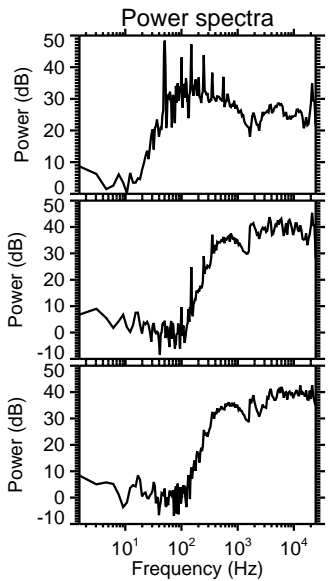
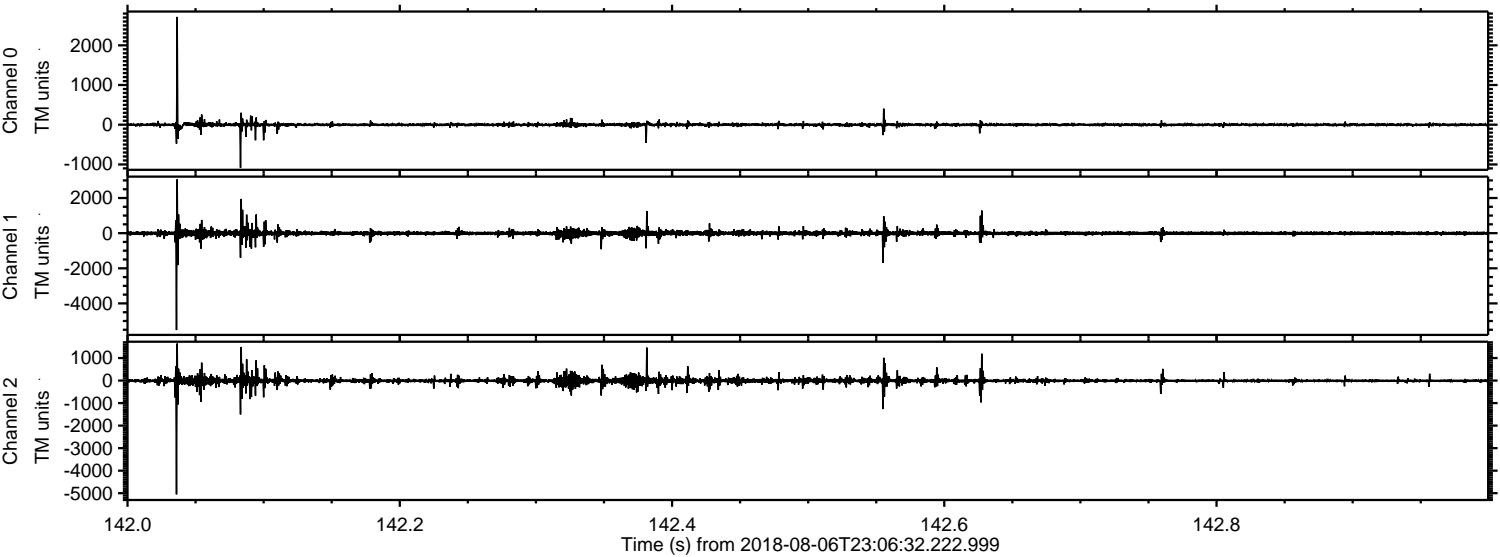


Processed Thu Aug 9 11:22:55 2018 by ELM ver.2012-10-06 from 001__elm20180806_230631__dat00.bin

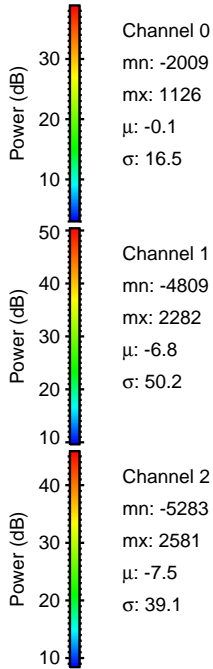
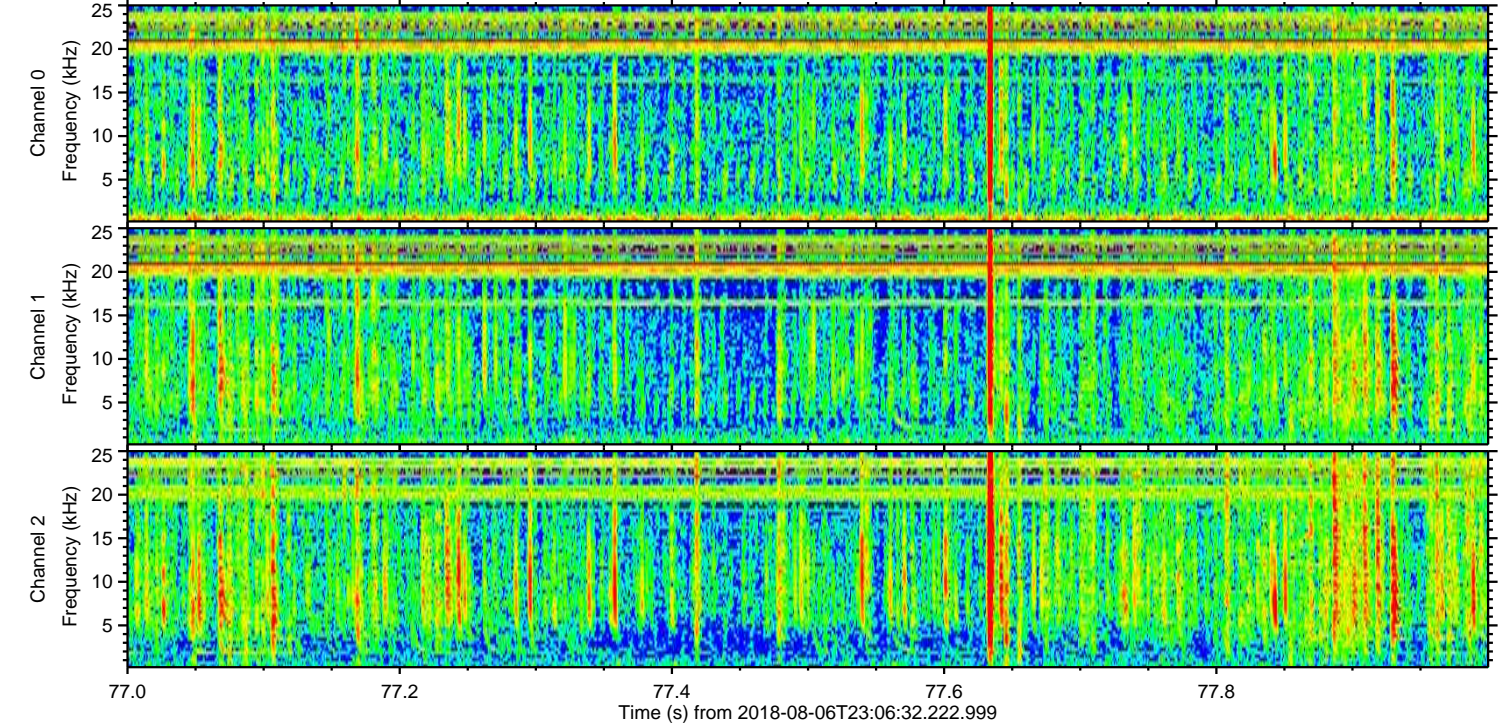
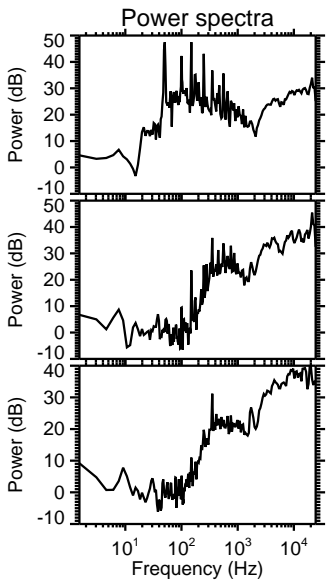
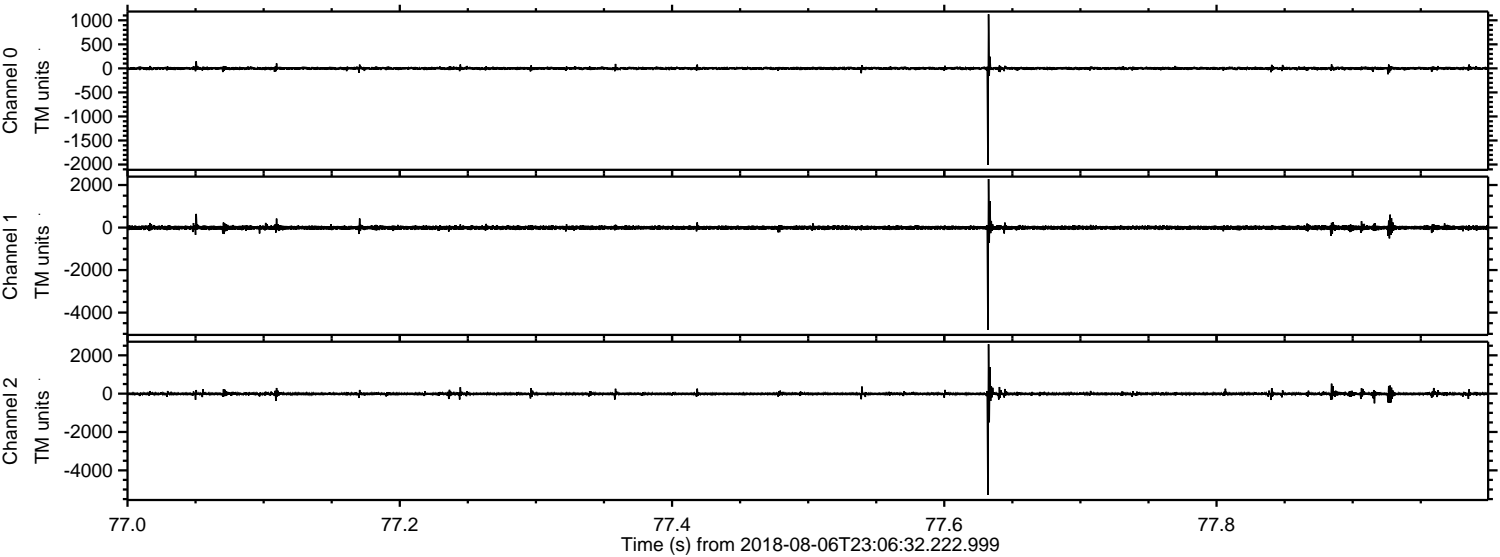


ELMAVAN 3D WAVEFORMS (Measured data sampled at 50 kHz) 51000 packets of 144 samples from 2018-08-06T23:06:32.222.999. Part 143/147

Processed Thu Aug 9 11:22:56 2018 by ELM ver.2012-10-06 from 001__elm20180806_230631__dat00.bin

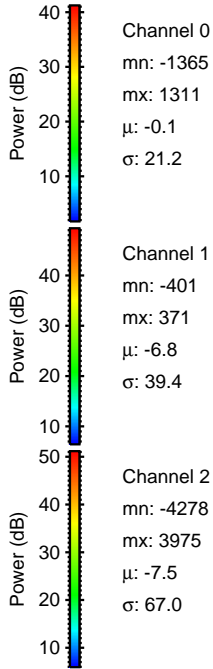
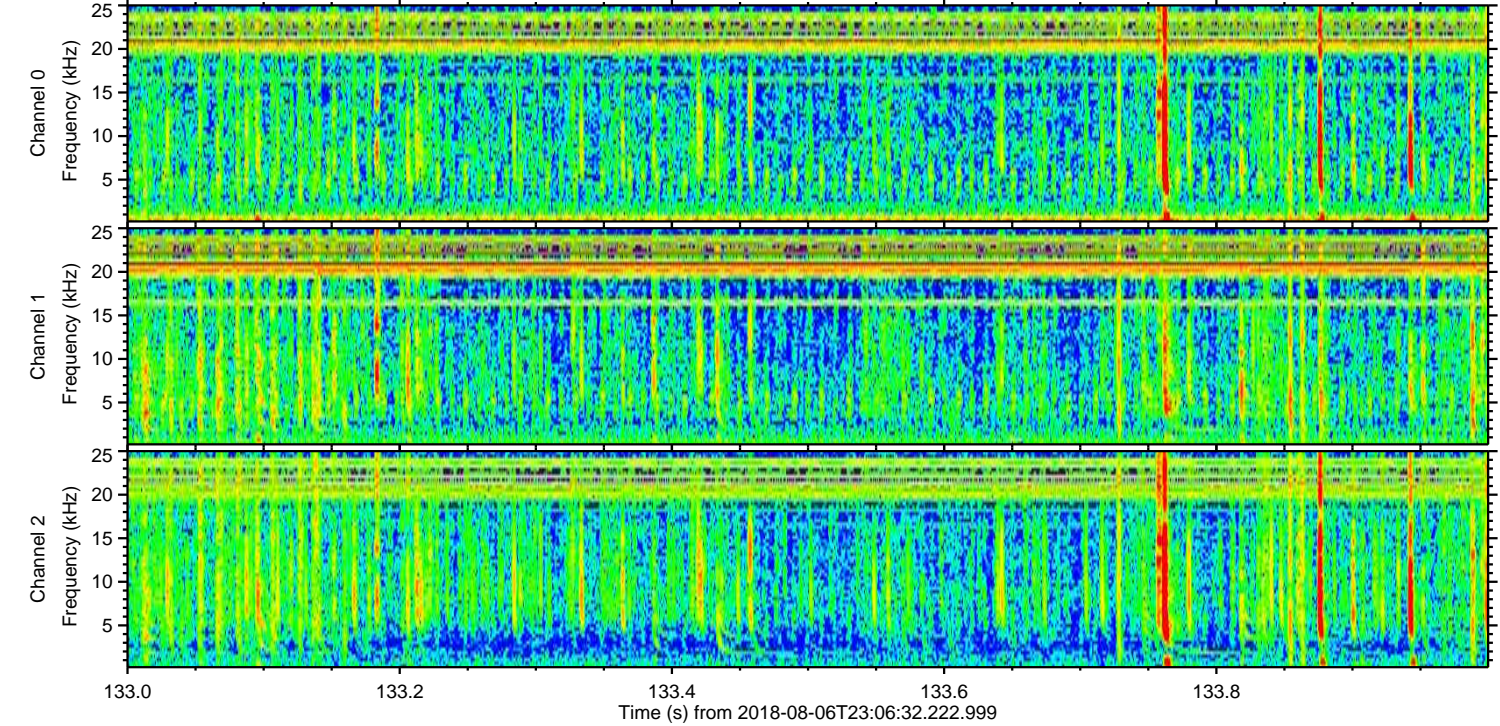
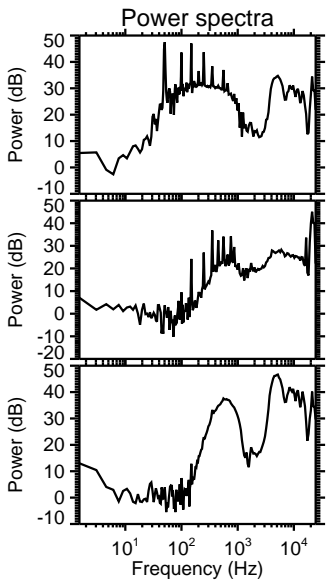
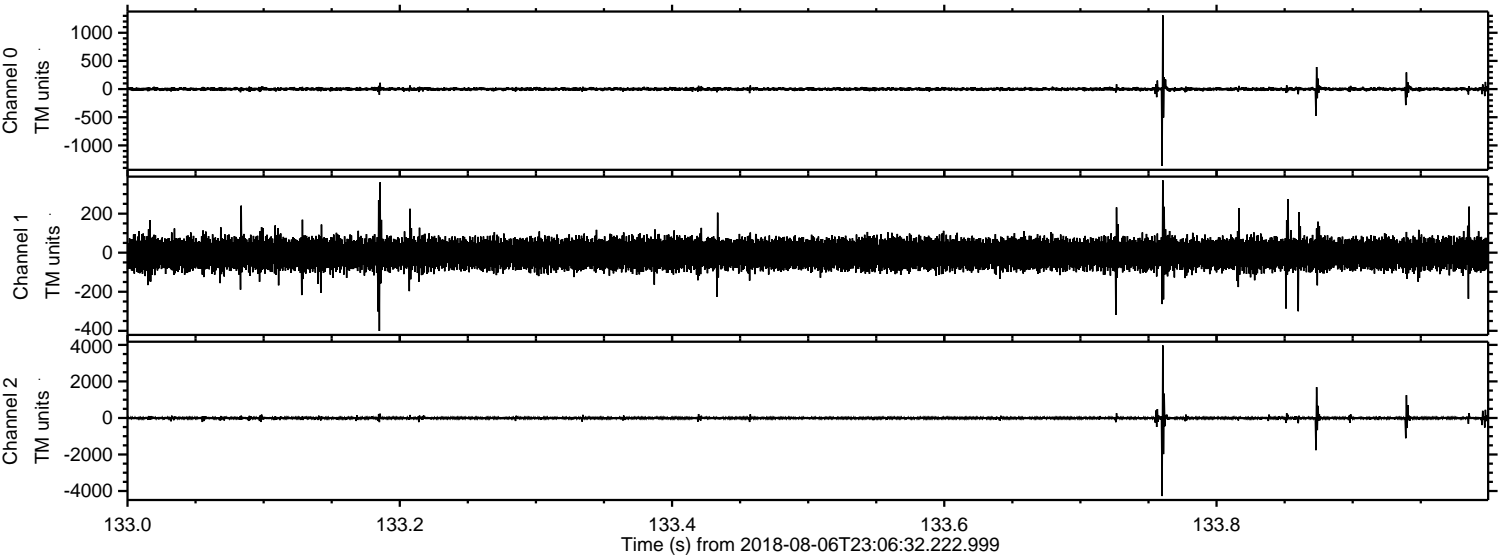


Processed Thu Aug 9 11:22:56 2018 by ELM ver.2012-10-06 from 001__elm20180806_230631__dat00.bin

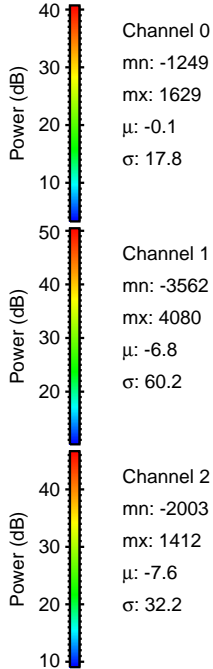
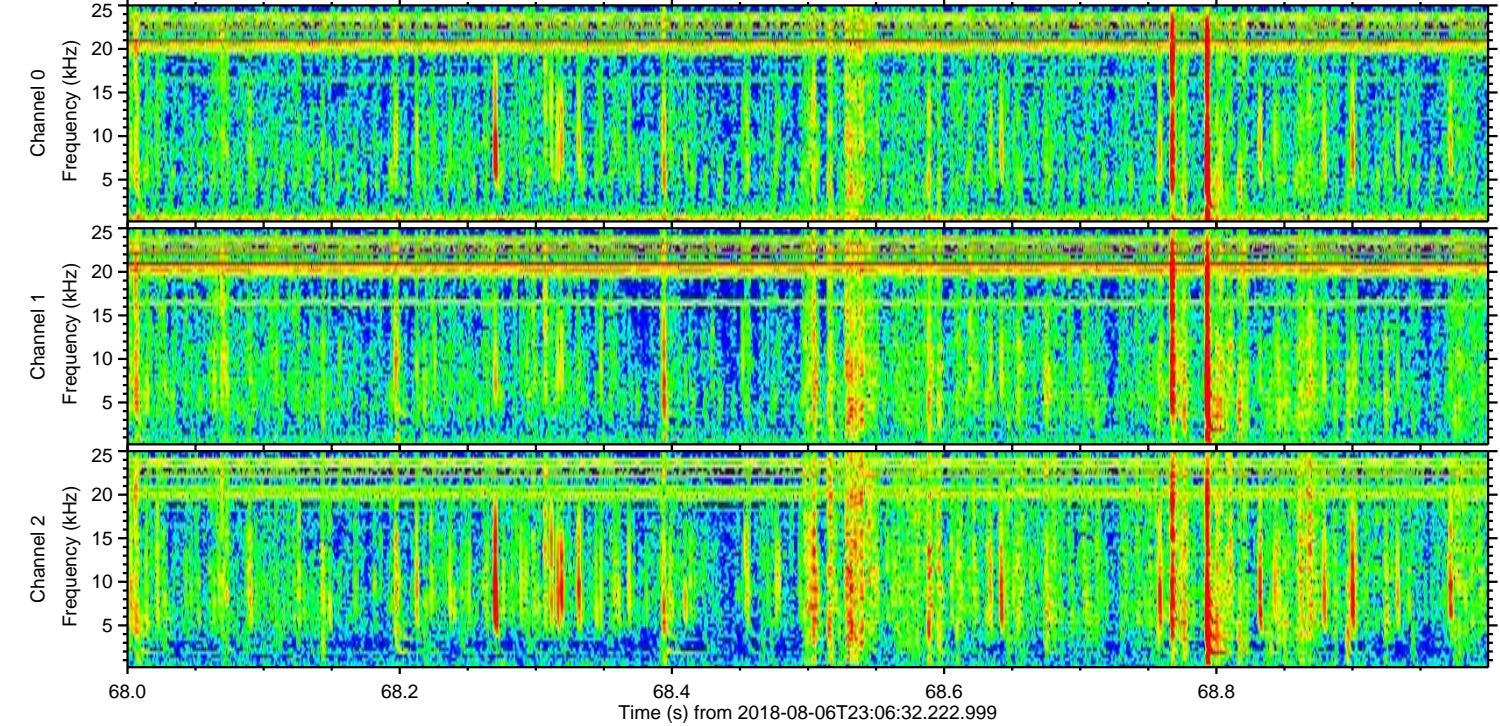
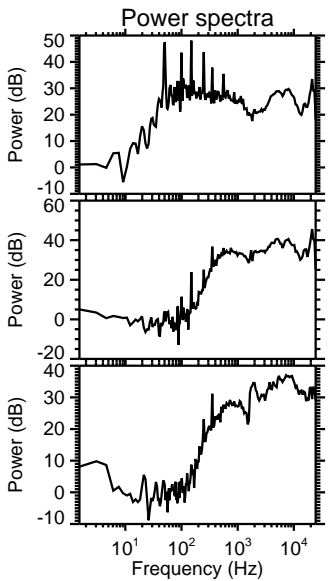
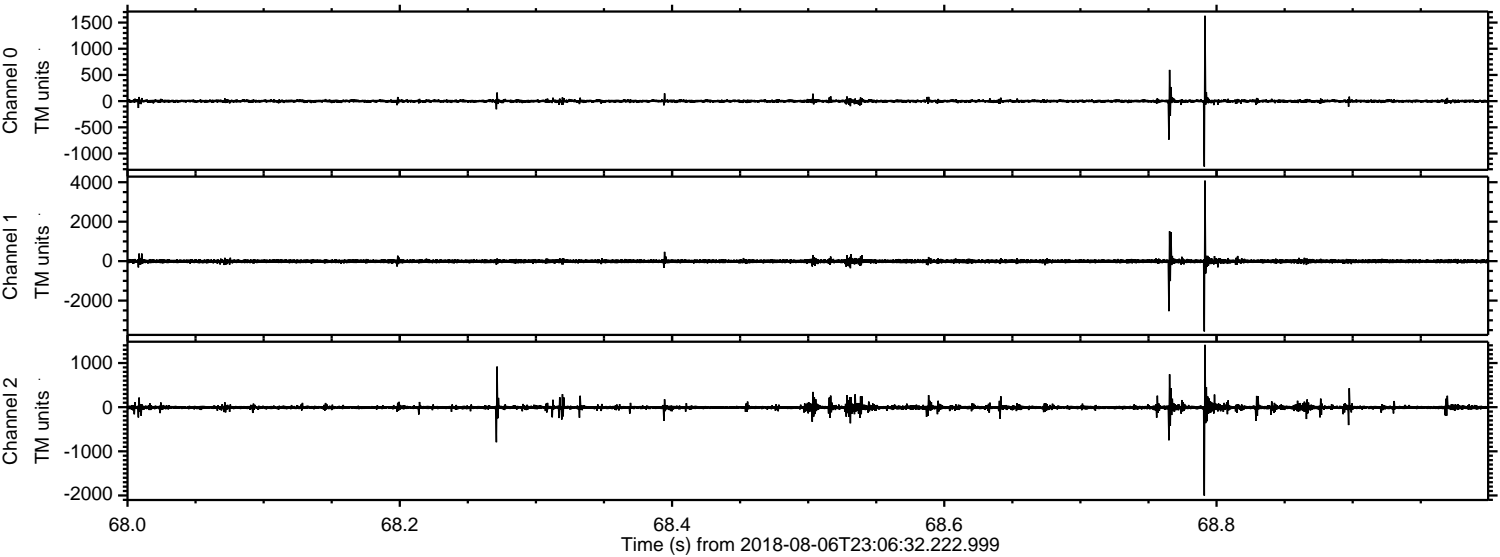


ELMAVAN 3D WAVEFORMS (Measured data sampled at 50 kHz) 51000 packets of 144 samples from 2018-08-06T23:06:32.222.999. Part 134/147

Processed Thu Aug 9 11:22:57 2018 by ELM ver.2012-10-06 from 001__elm20180806_230631__dat00.bin



Processed Thu Aug 9 11:22:58 2018 by ELM ver.2012-10-06 from 001__elm20180806_230631__dat00.bin

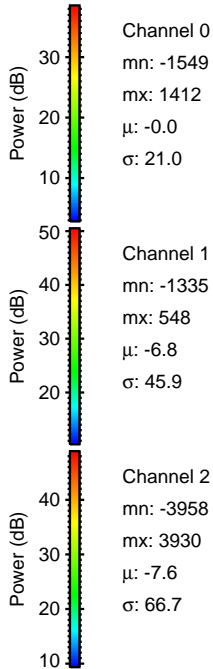
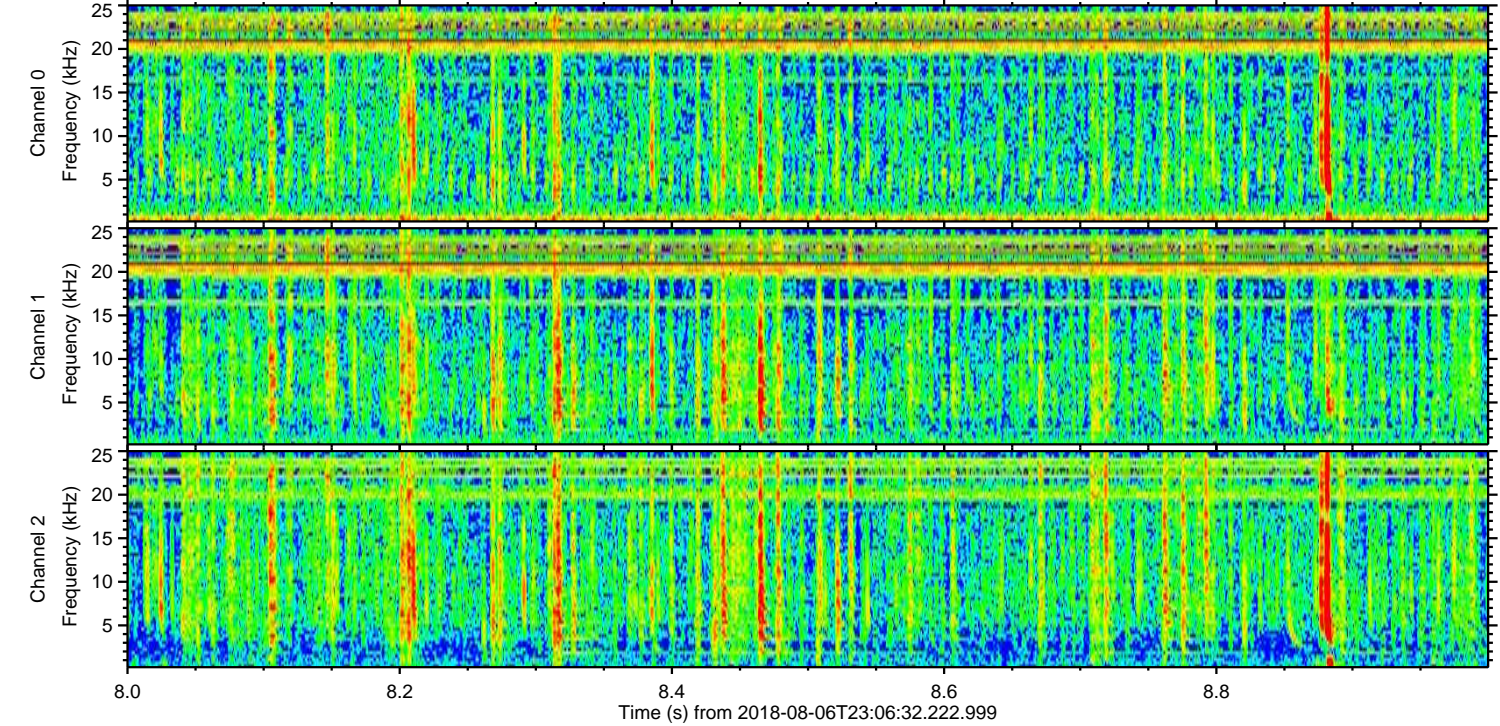
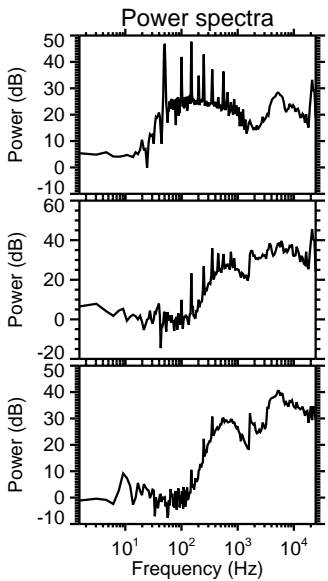
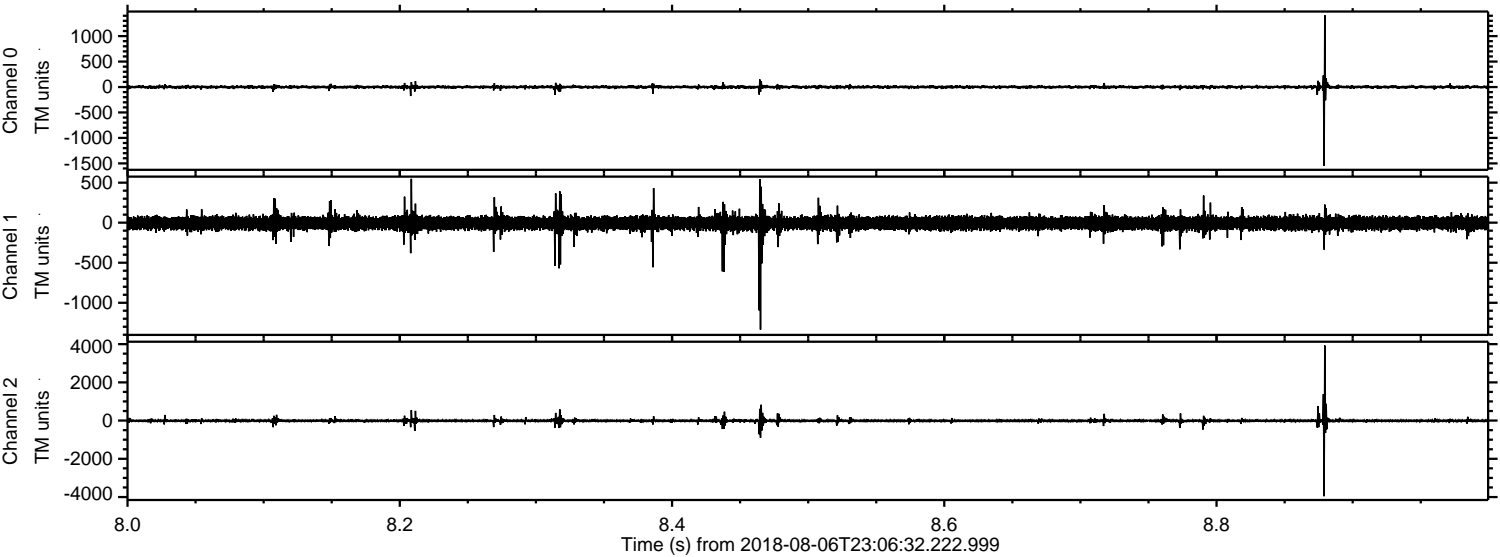


Channel 0
mn: -1249
mx: 1629
 μ : -0.1
 σ : 17.8

Channel 1
mn: -3562
mx: 4080
 μ : -6.8
 σ : 60.2

Channel 2
mn: -2003
mx: 1412
 μ : -7.6
 σ : 32.2

Processed Thu Aug 9 11:22:58 2018 by ELM ver.2012-10-06 from 001__elm20180806_230631__dat00.bin



Processed Thu Aug 9 11:22:59 2018 by ELM ver.2012-10-06 from 001__elm20180806_230631__dat00.bin

