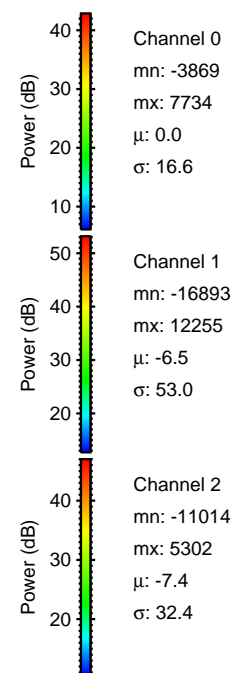
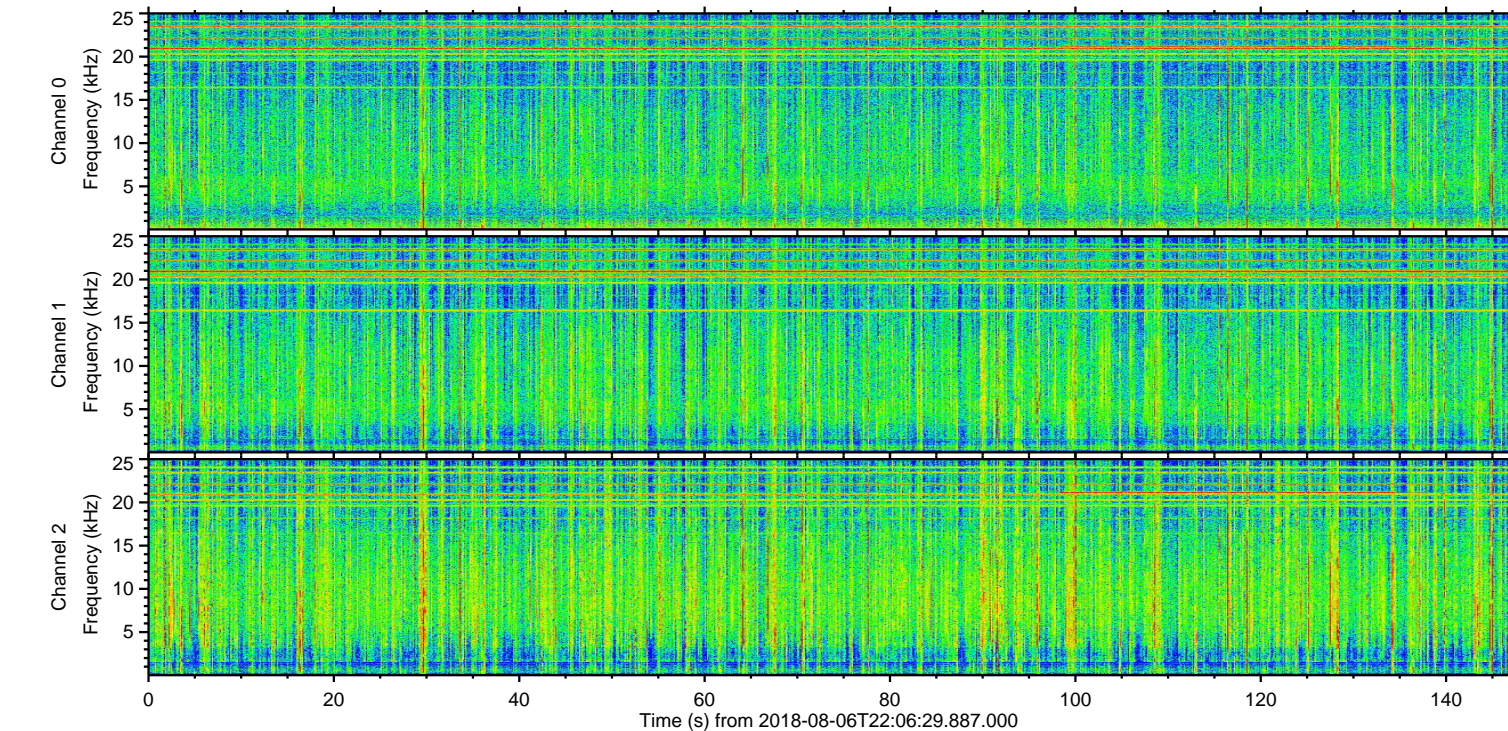
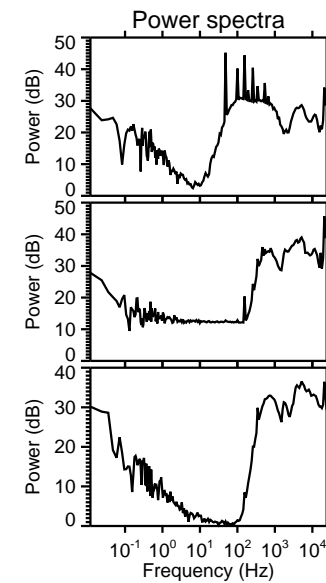
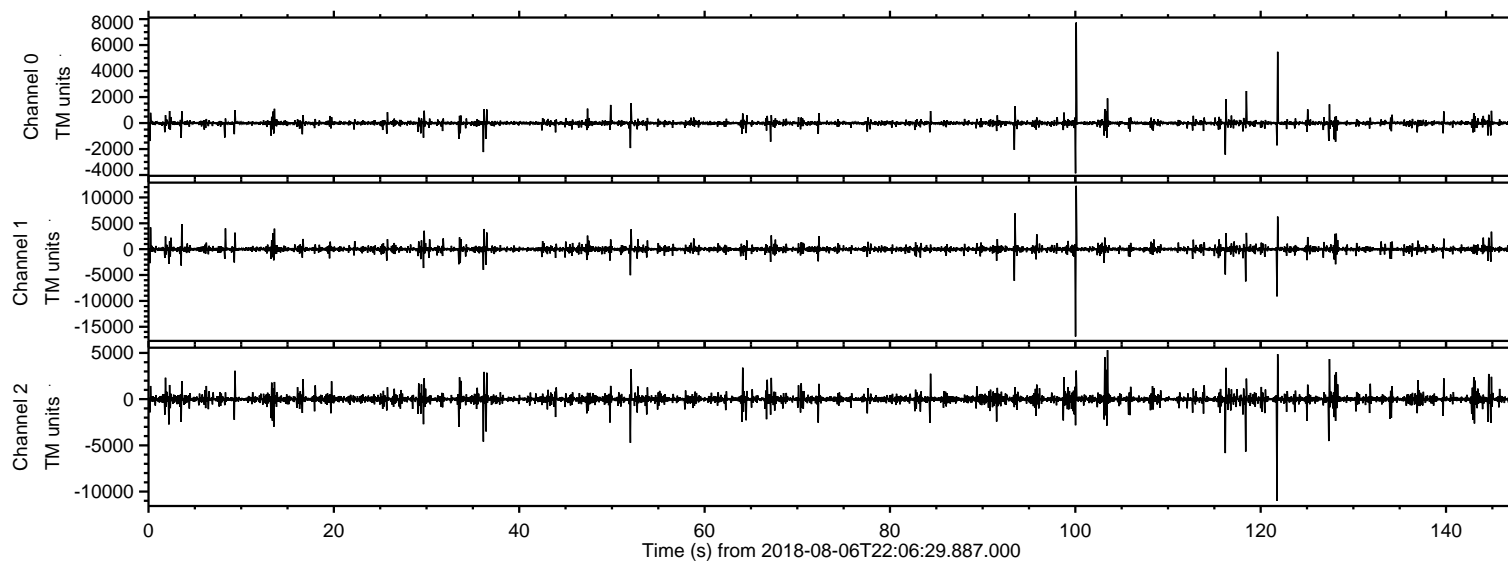


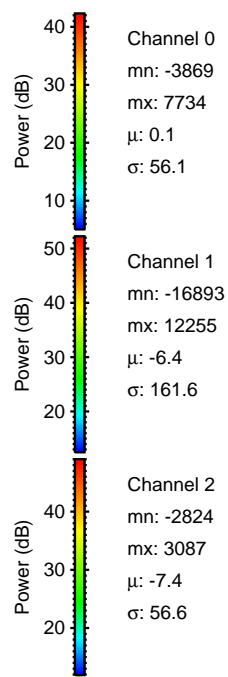
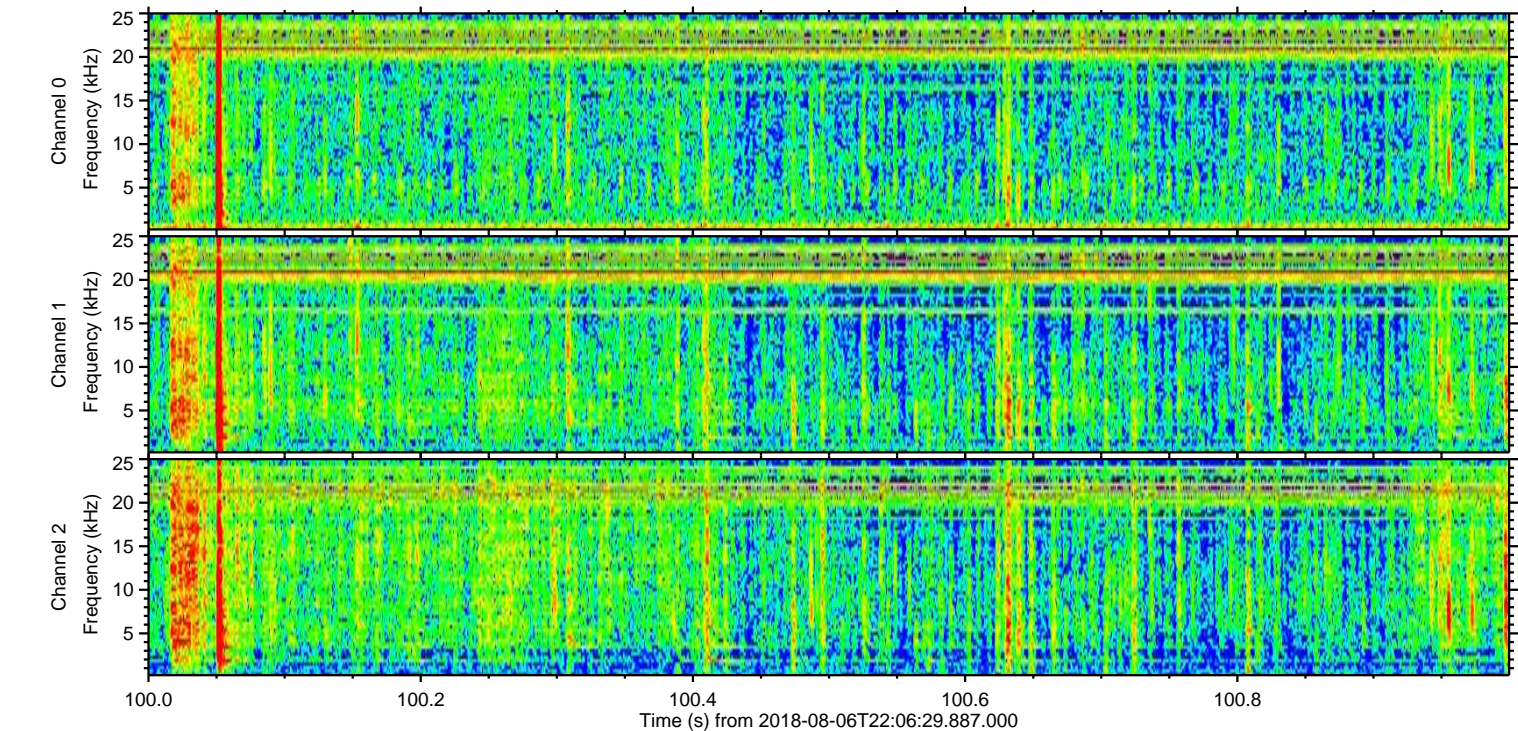
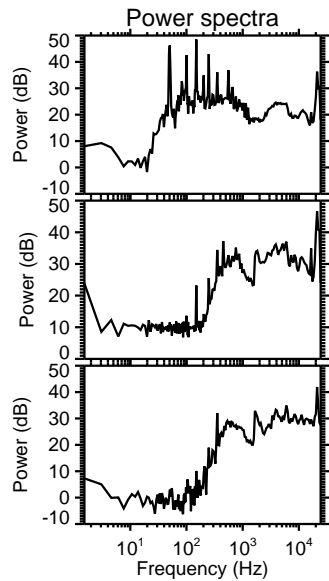
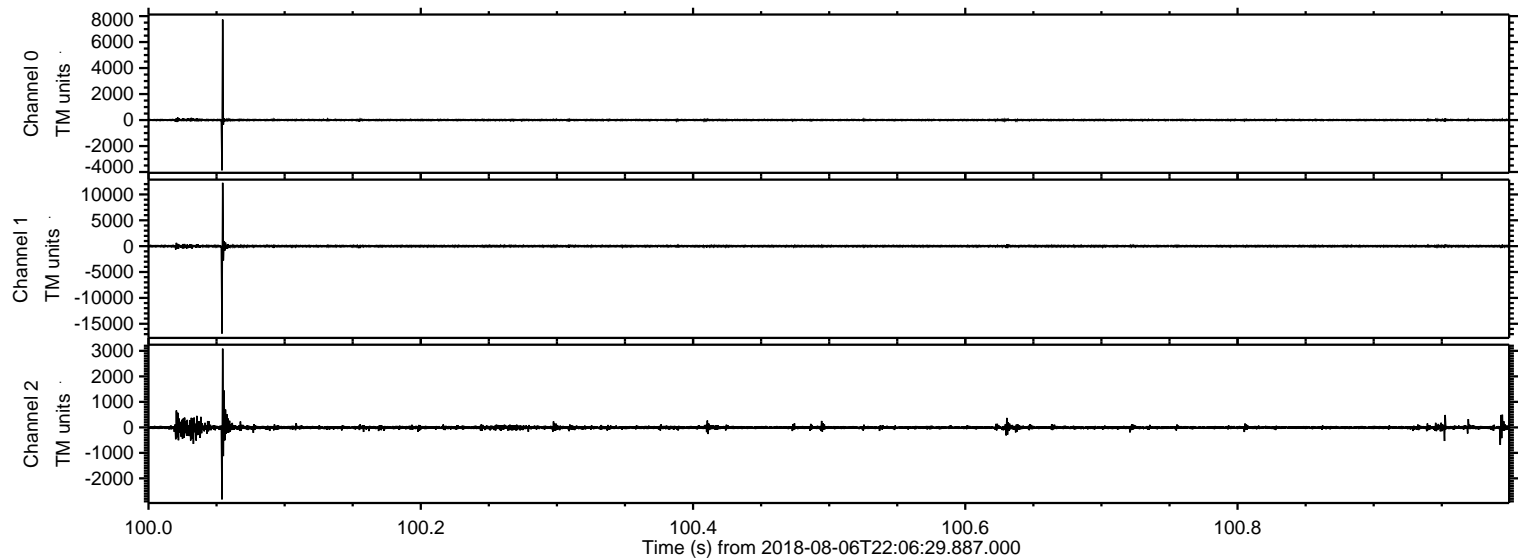
ELMAVAN 3D WAVEFORMS (Measured data sampled at 50 kHz) 51000 packets of 144 samples from 2018-08-06T22:06:29.887.000.

Processed Thu Aug 9 11:13:38 2018 by ELM ver.2012-10-06 from 001__elm20180806_220628__dat00.bin



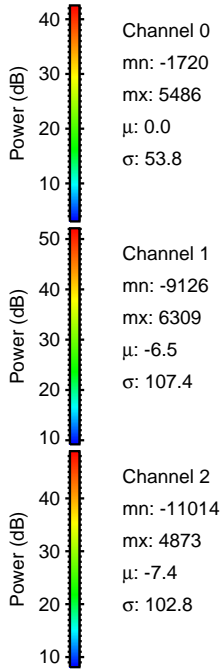
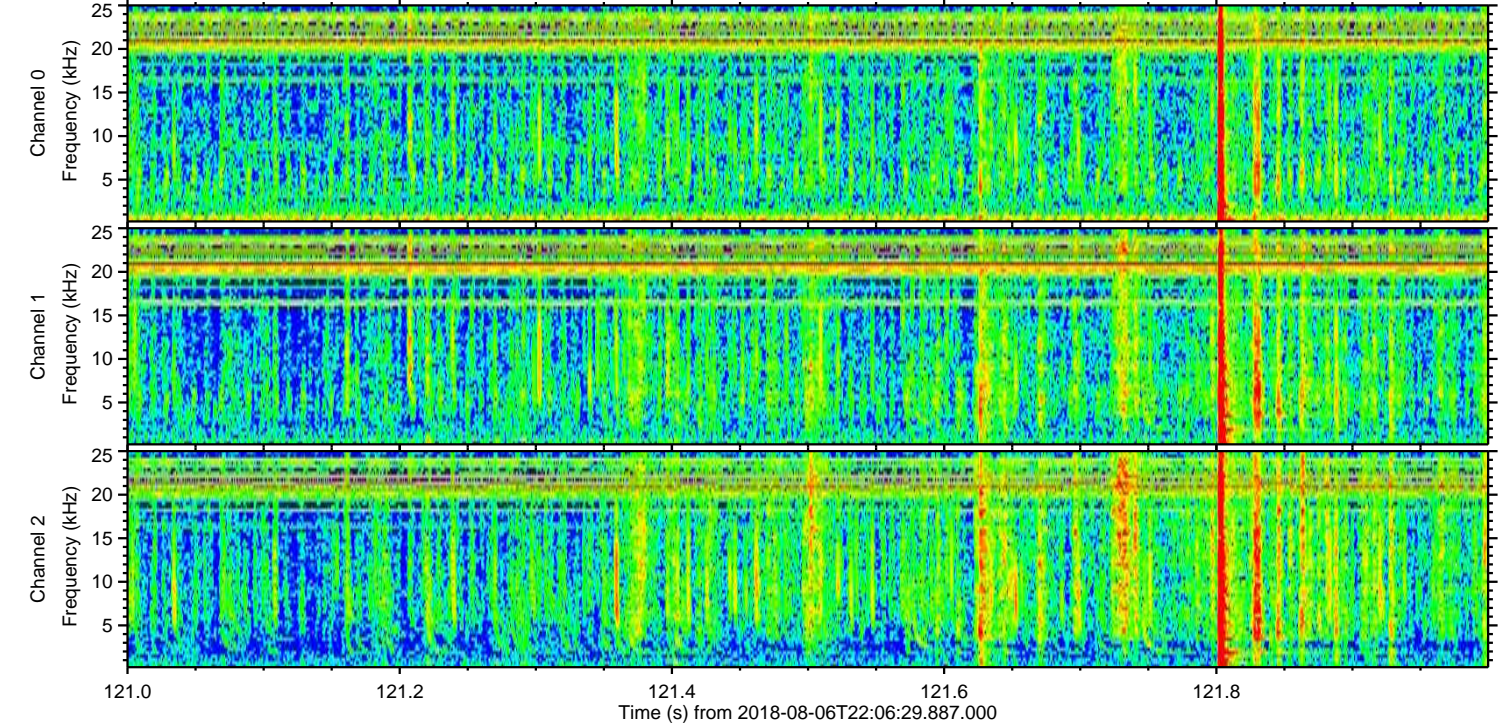
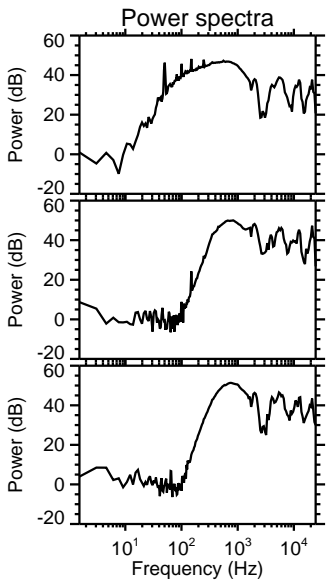
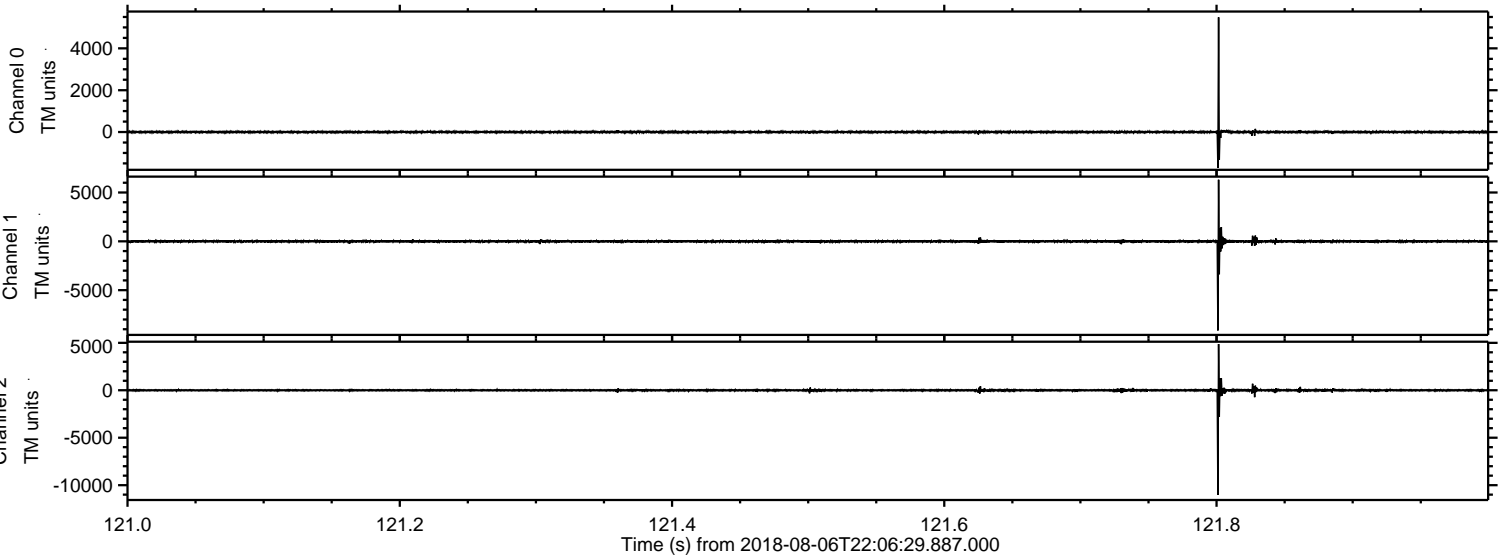
ELMAVAN 3D WAVEFORMS (Measured data sampled at 50 kHz) 51000 packets of 144 samples from 2018-08-06T22:06:29.887.000. Part 101/147

Processed Thu Aug 9 11:13:49 2018 by ELM ver.2012-10-06 from 001__elm20180806_220628__dat00.bin

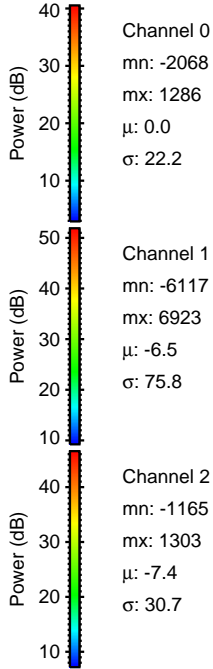
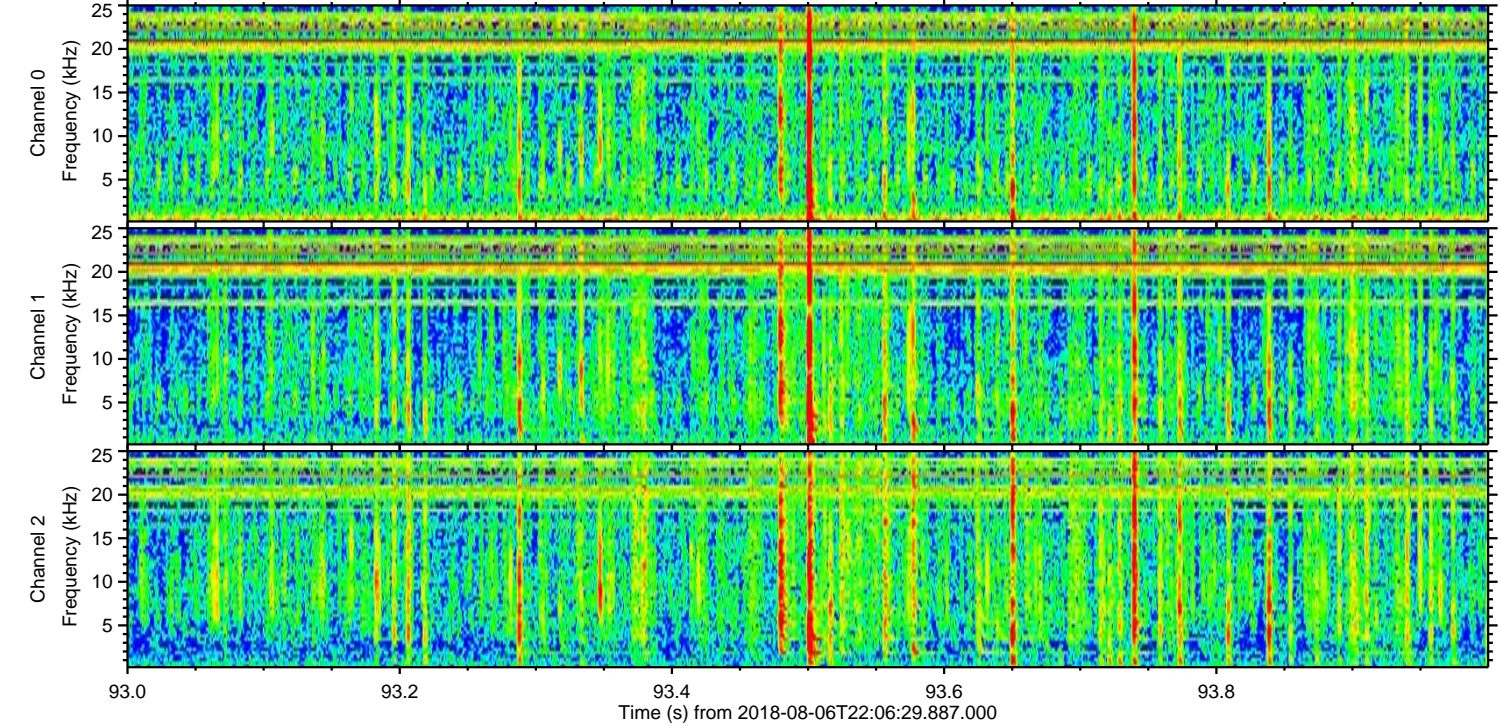
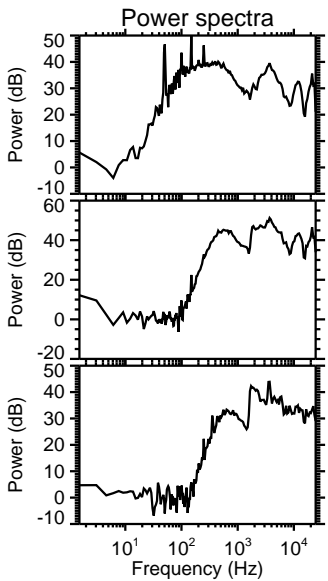
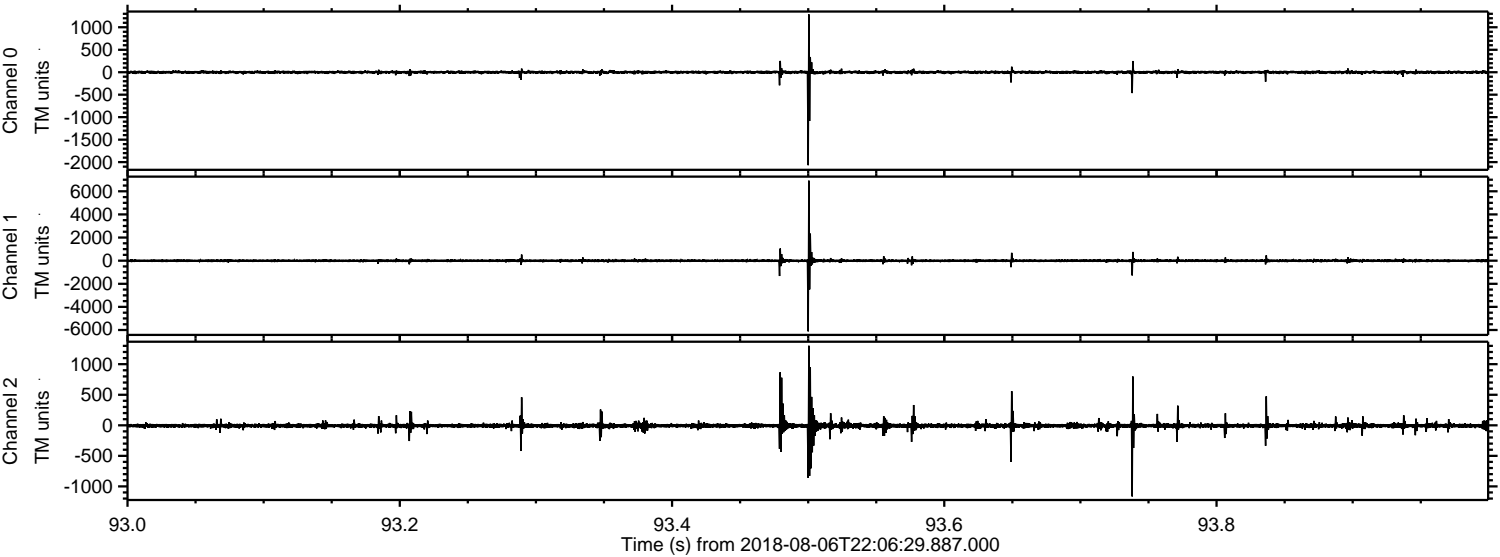


ELMAVAN 3D WAVEFORMS (Measured data sampled at 50 kHz) 51000 packets of 144 samples from 2018-08-06T22:06:29.887.000. Part 122/147

Processed Thu Aug 9 11:13:50 2018 by ELM ver.2012-10-06 from 001__elm20180806_220628__dat00.bin

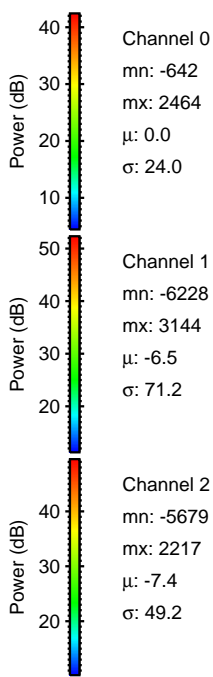
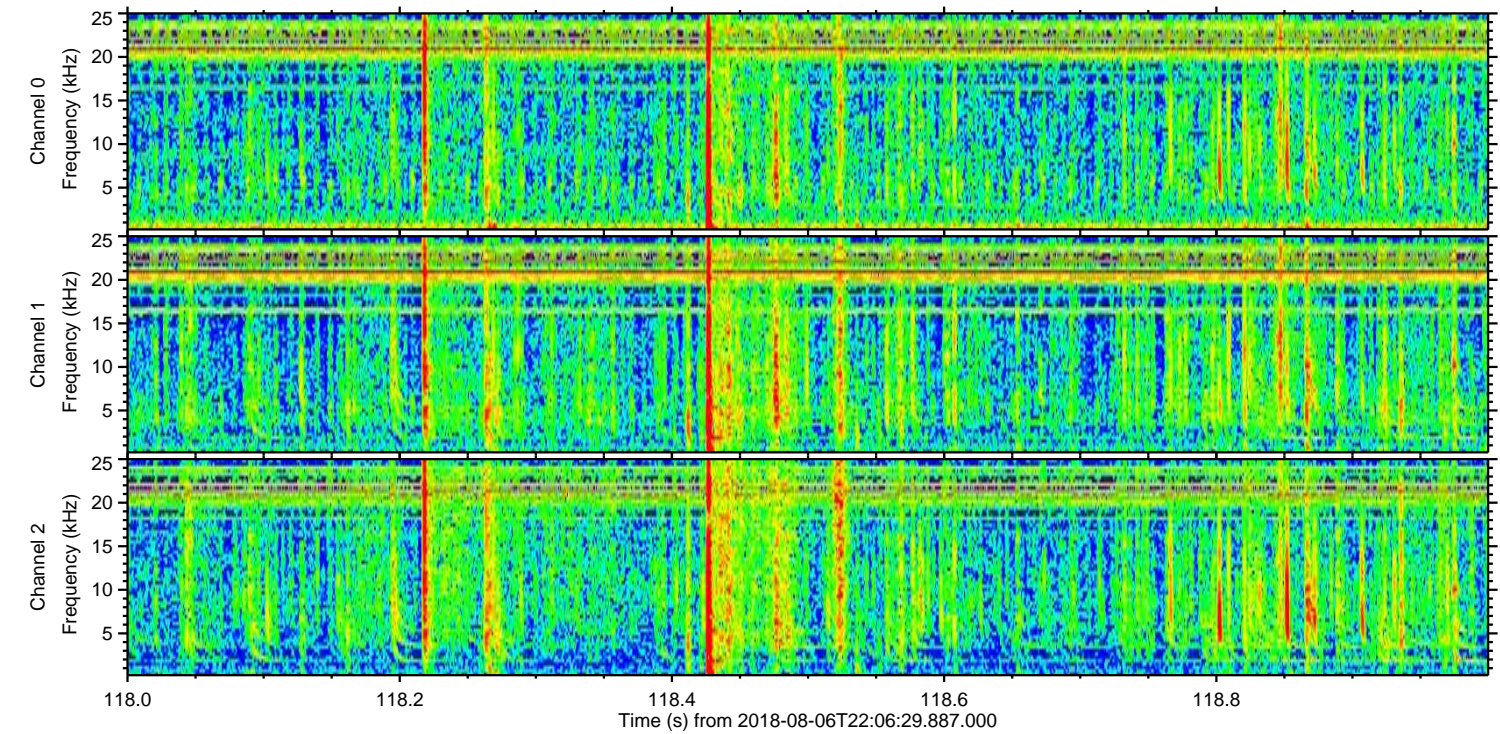
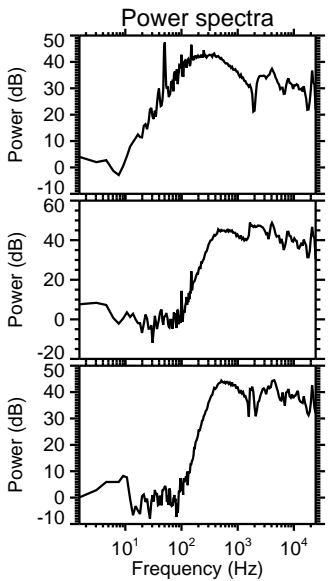
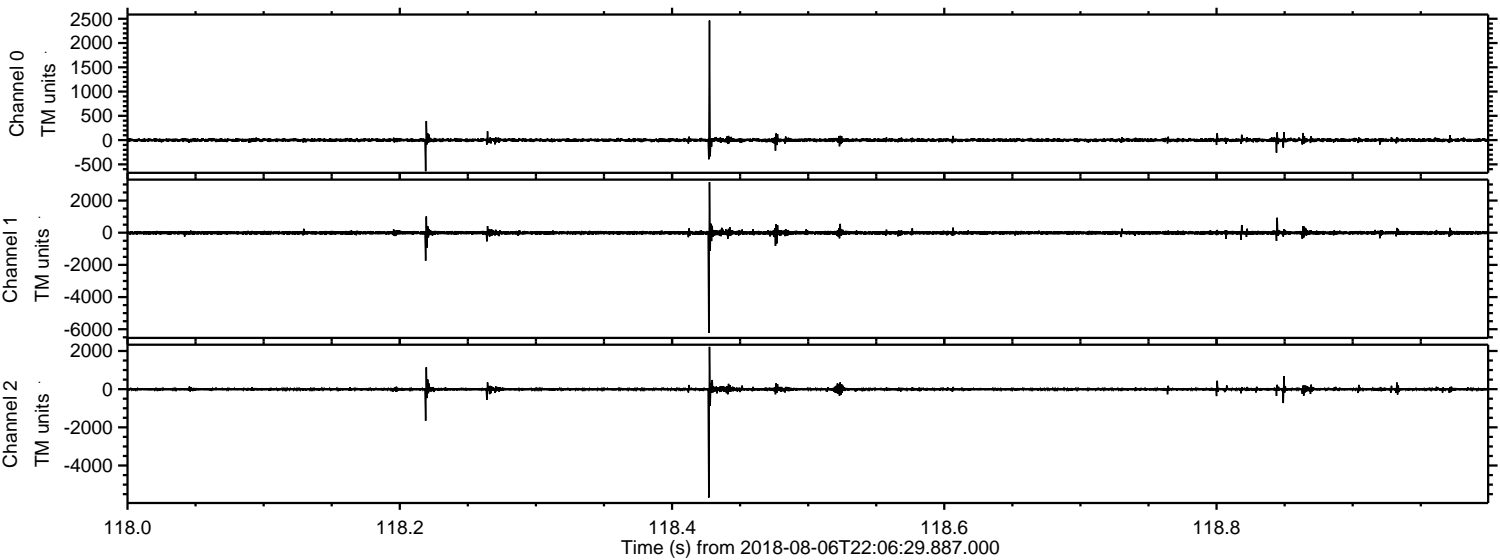


Processed Thu Aug 9 11:13:50 2018 by ELM ver.2012-10-06 from 001__elm20180806_220628__dat00.bin



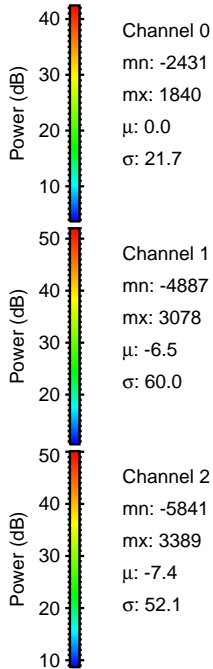
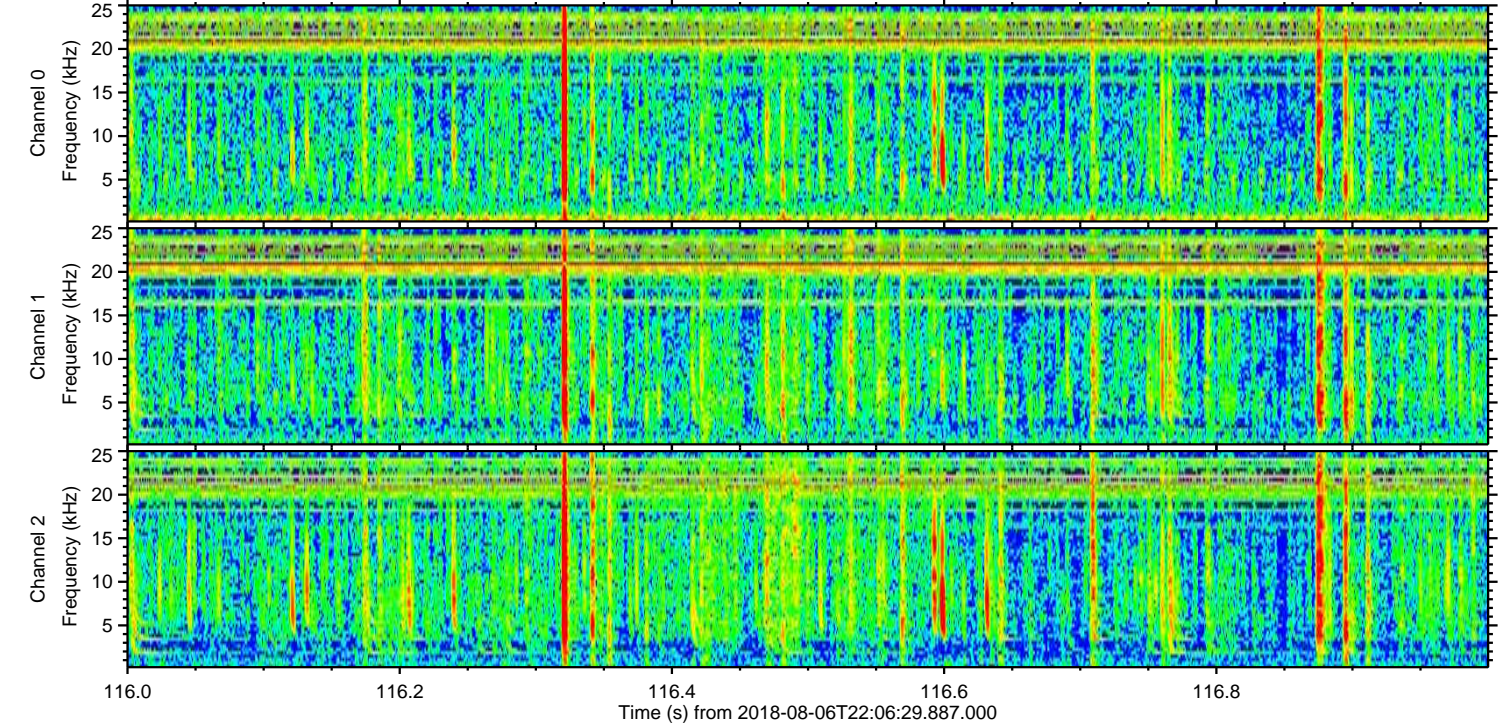
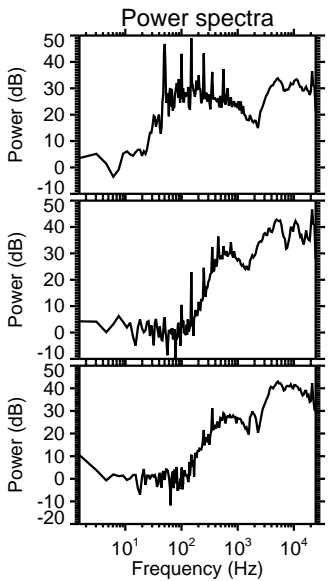
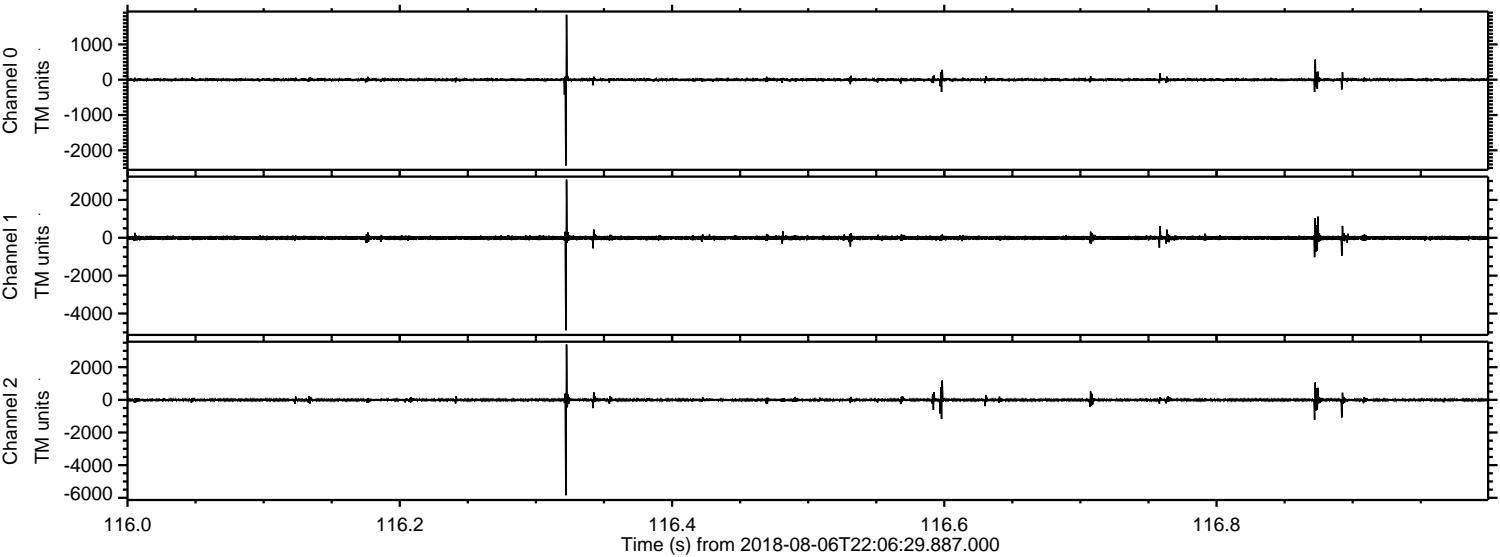
ELMAVAN 3D WAVEFORMS (Measured data sampled at 50 kHz) 51000 packets of 144 samples from 2018-08-06T22:06:29.887.000. Part 119/147

Processed Thu Aug 9 11:13:51 2018 by ELM ver.2012-10-06 from 001__elm20180806_220628__dat00.bin



ELMAVAN 3D WAVEFORMS (Measured data sampled at 50 kHz) 51000 packets of 144 samples from 2018-08-06T22:06:29.887.000. Part 117/147

Processed Thu Aug 9 11:13:52 2018 by ELM ver.2012-10-06 from 001__elm20180806_220628__dat00.bin



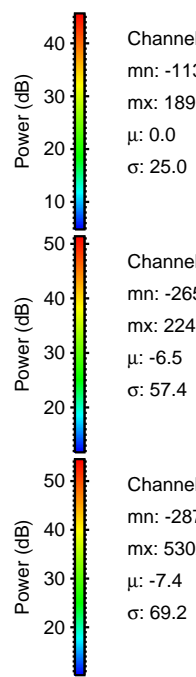
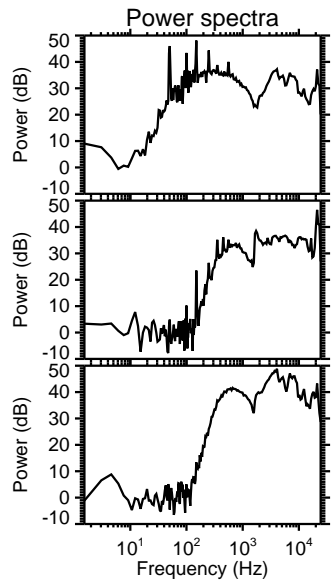
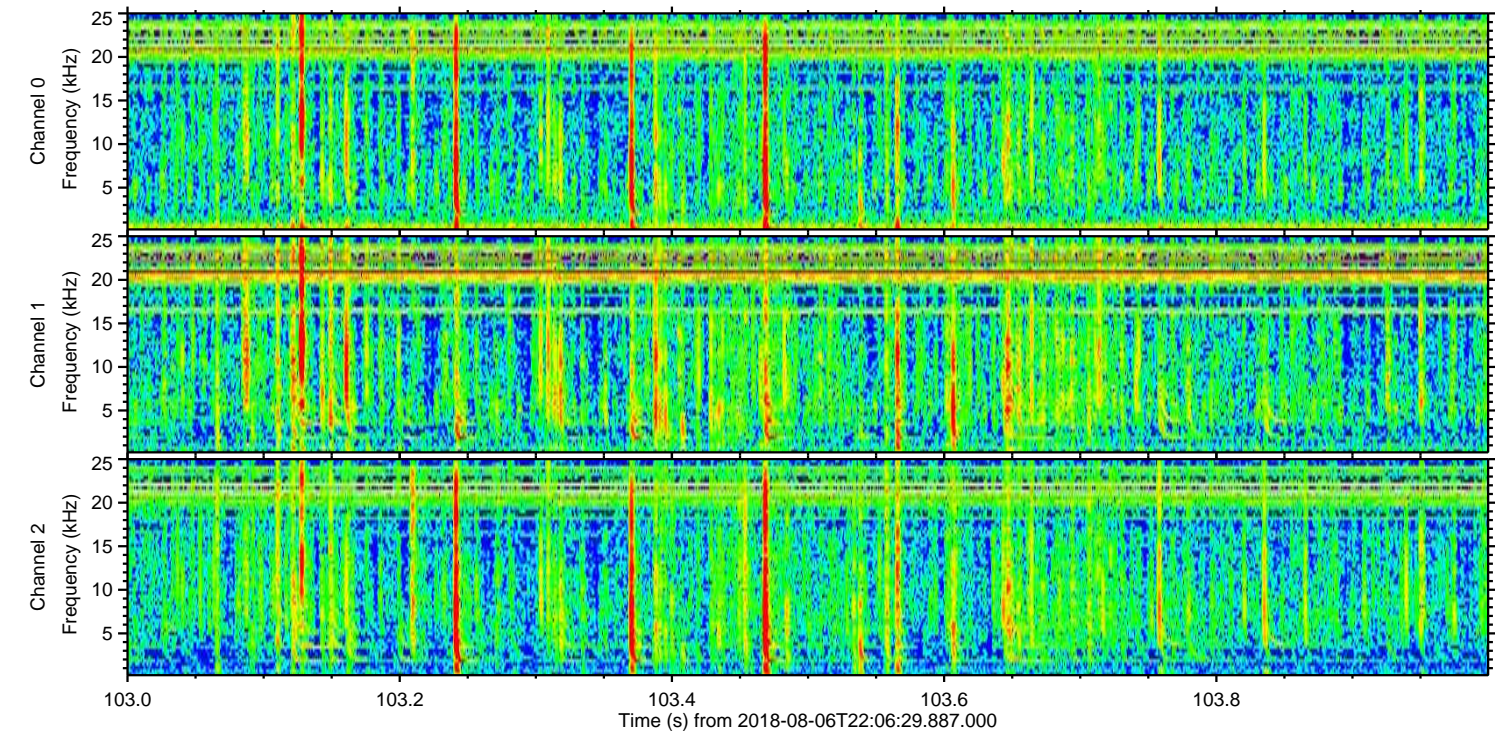
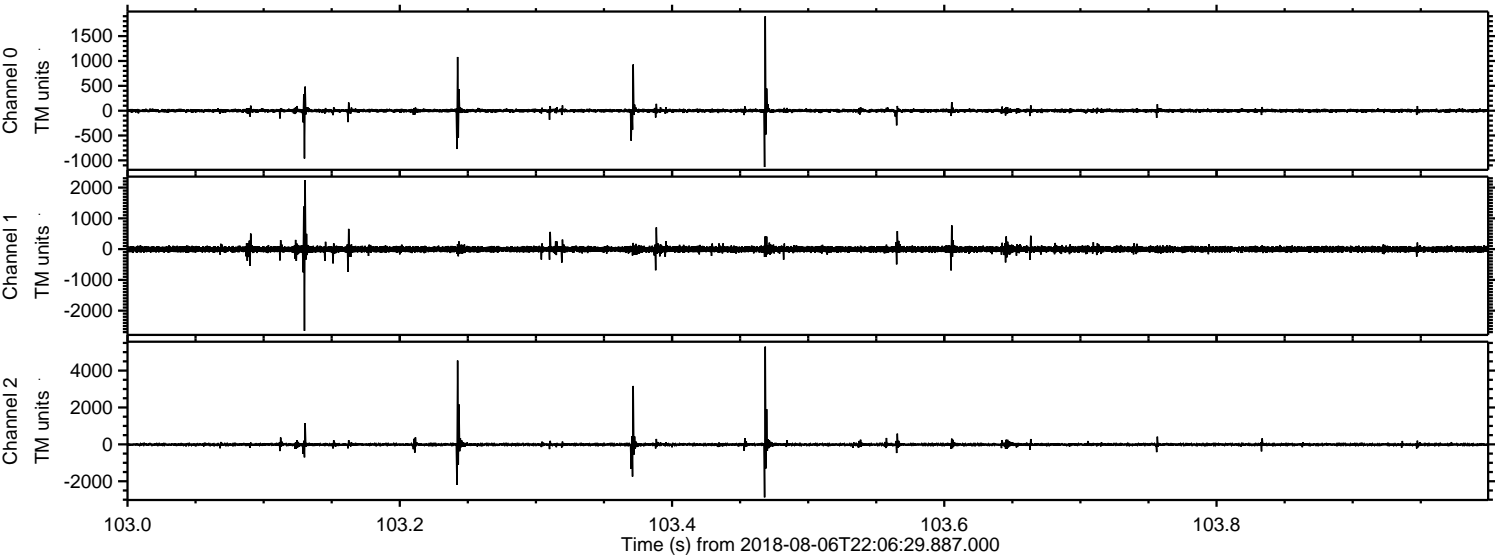
Channel 0
mn: -2431
mx: 1840
 μ : 0.0
 σ : 21.7

Channel 1
mn: -4887
mx: 3078
 μ : -6.5
 σ : 60.0

Channel 2
mn: -5841
mx: 3389
 μ : -7.4
 σ : 52.1

ELMAVAN 3D WAVEFORMS (Measured data sampled at 50 kHz) 51000 packets of 144 samples from 2018-08-06T22:06:29.887.000. Part 104/147

Processed Thu Aug 9 11:13:53 2018 by ELM ver.2012-10-06 from 001__elm20180806_220628__dat00.bin

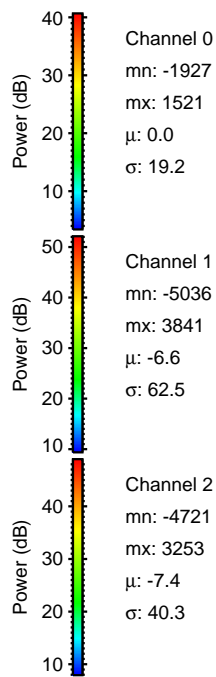
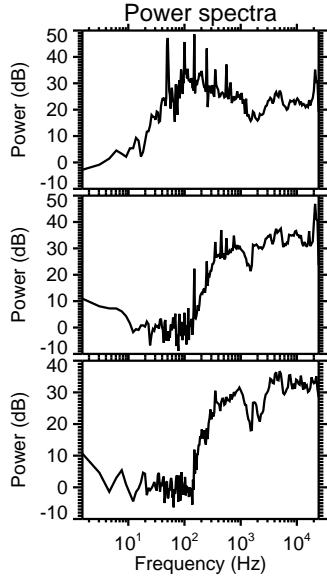
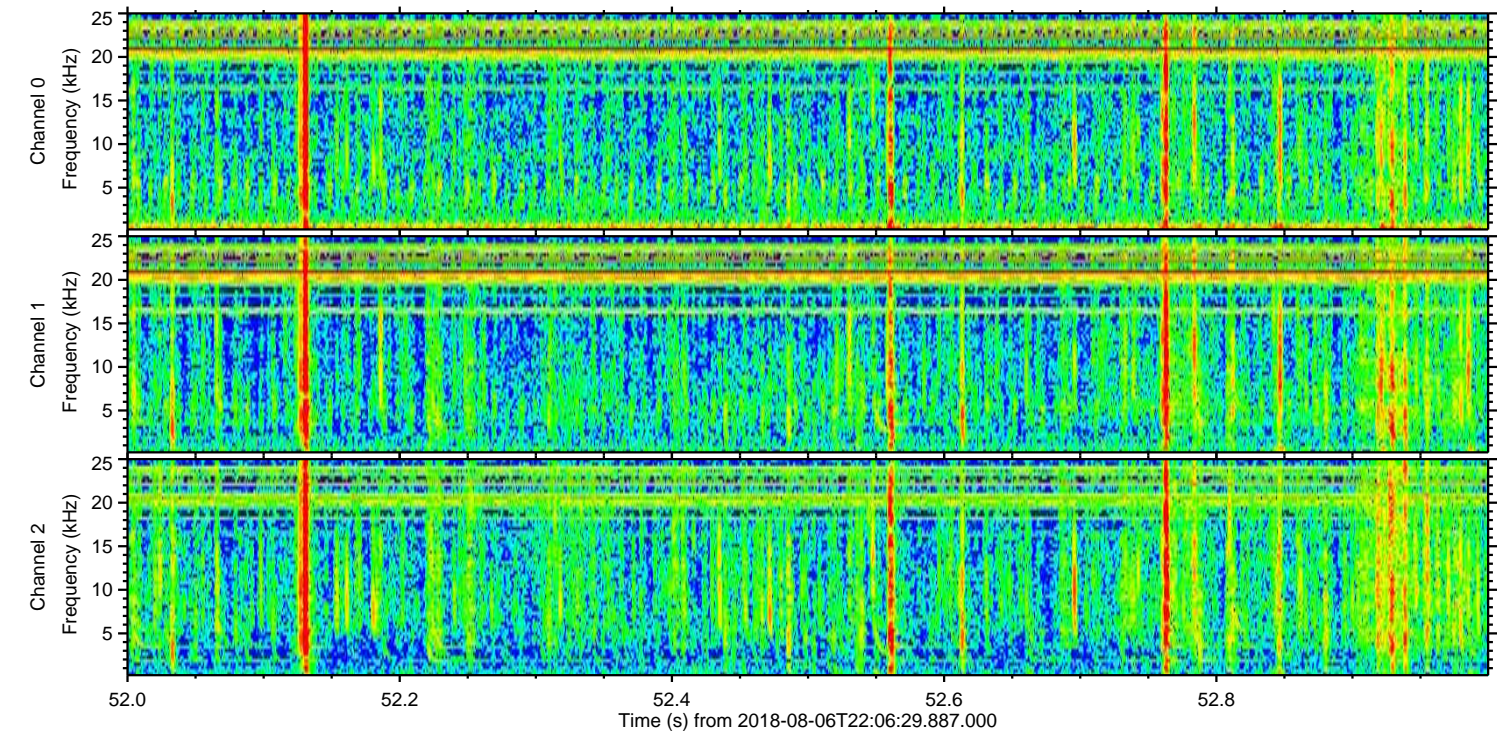
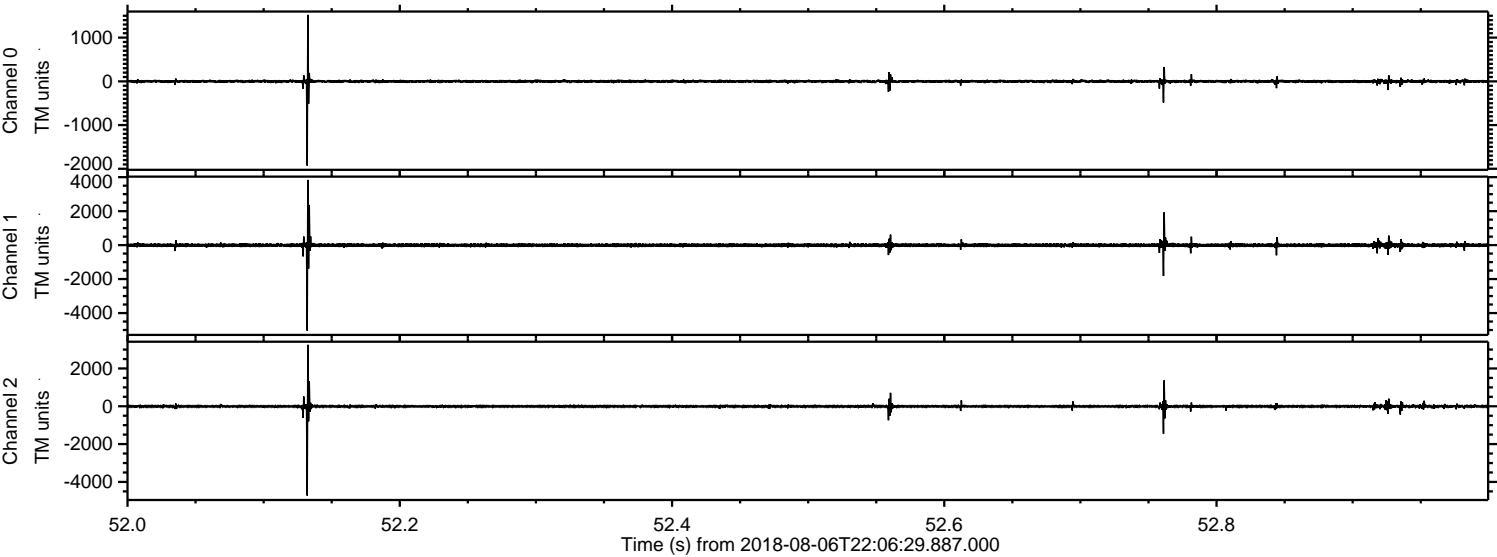


Channel 0
mn: -1133
mx: 1899
 μ : 0.0
 σ : 25.0

Channel 1
mn: -2657
mx: 2243
 μ : -6.5
 σ : 57.4

Channel 2
mn: -2871
mx: 5302
 μ : -7.4
 σ : 69.2

Processed Thu Aug 9 11:13:54 2018 by ELM ver.2012-10-06 from 001__elm20180806_220628__dat00.bin

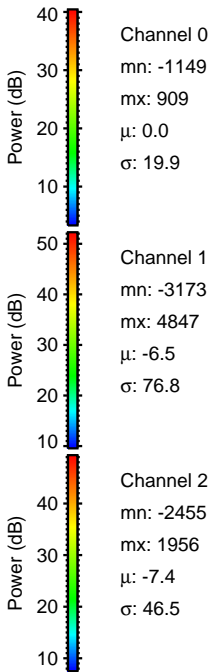
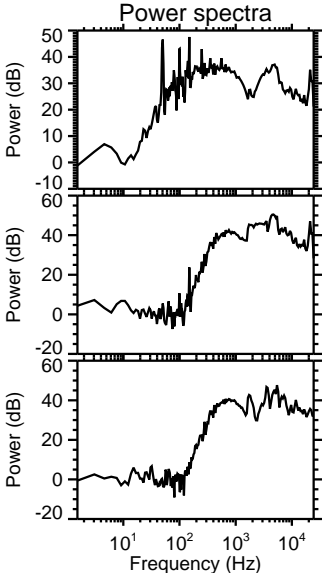
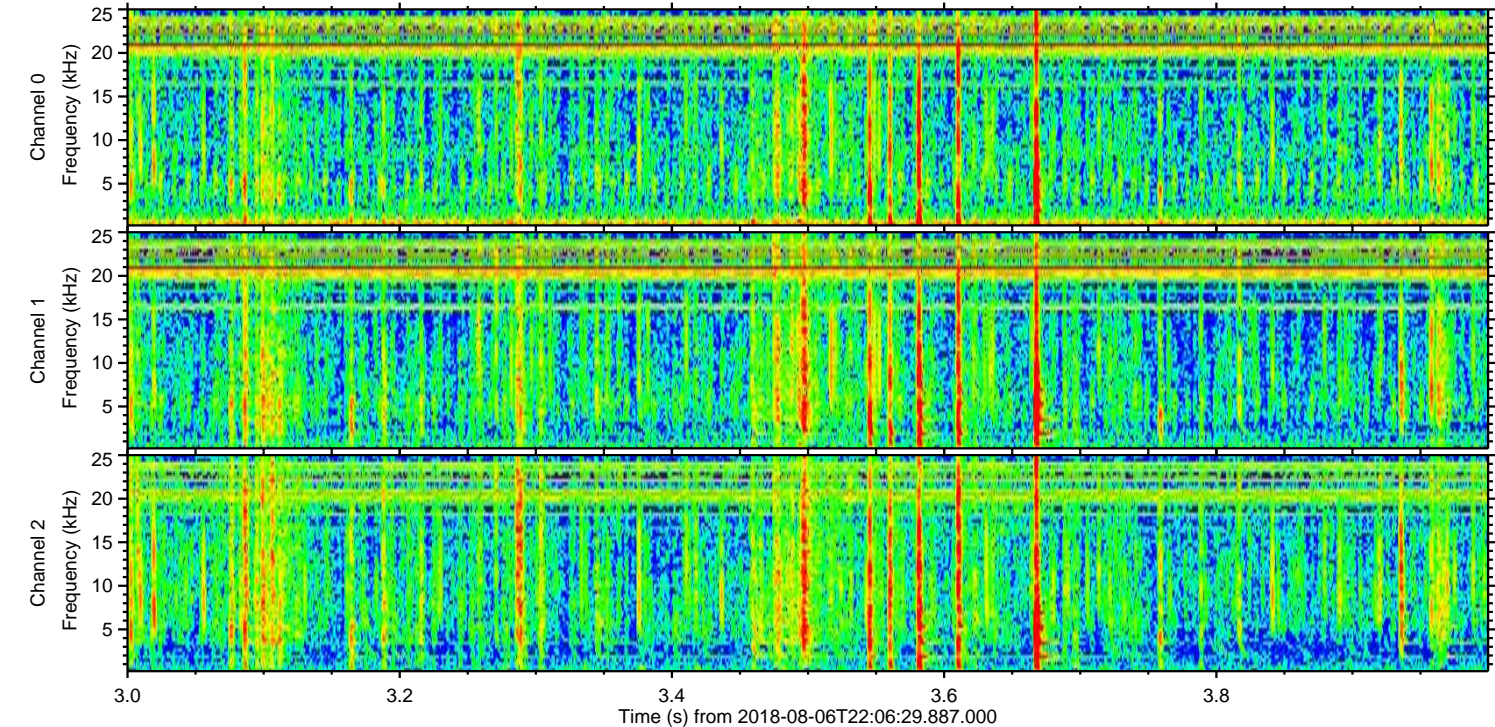
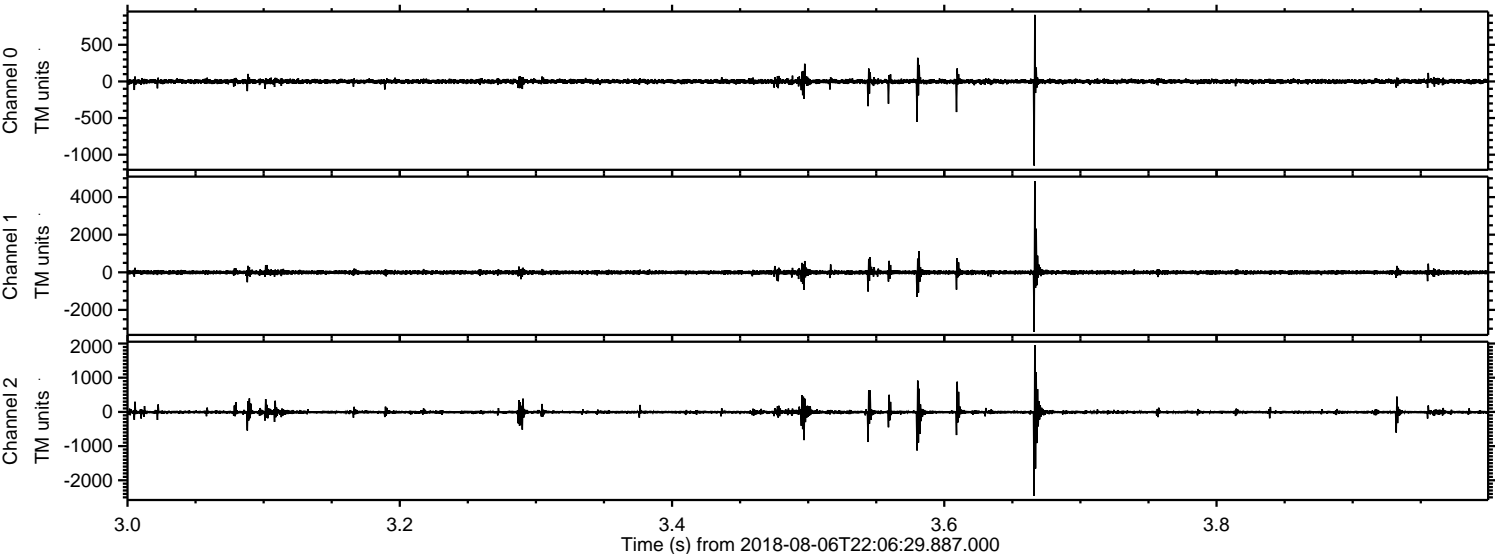


Channel 0
mn: -1927
mx: 1521
 μ : 0.0
 σ : 19.2

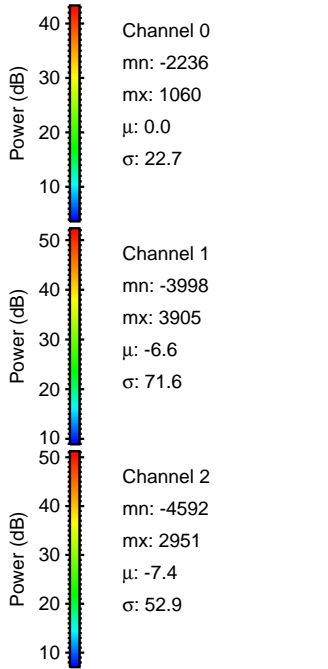
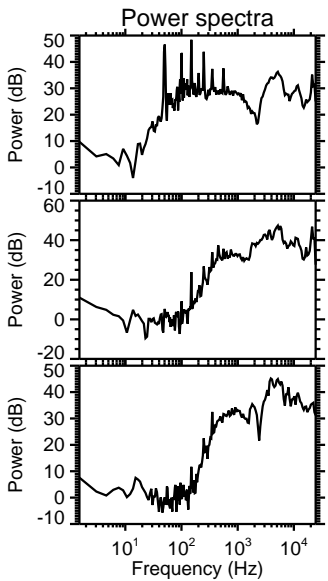
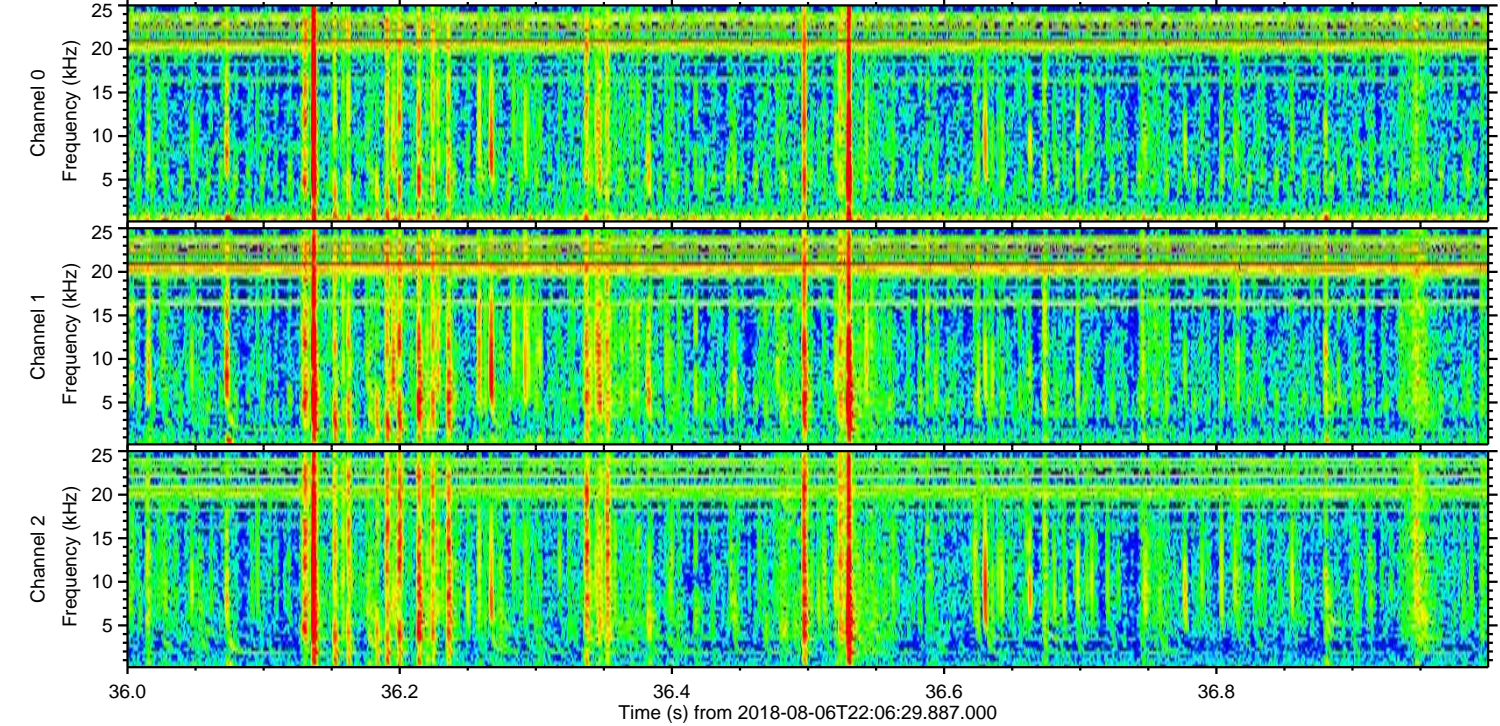
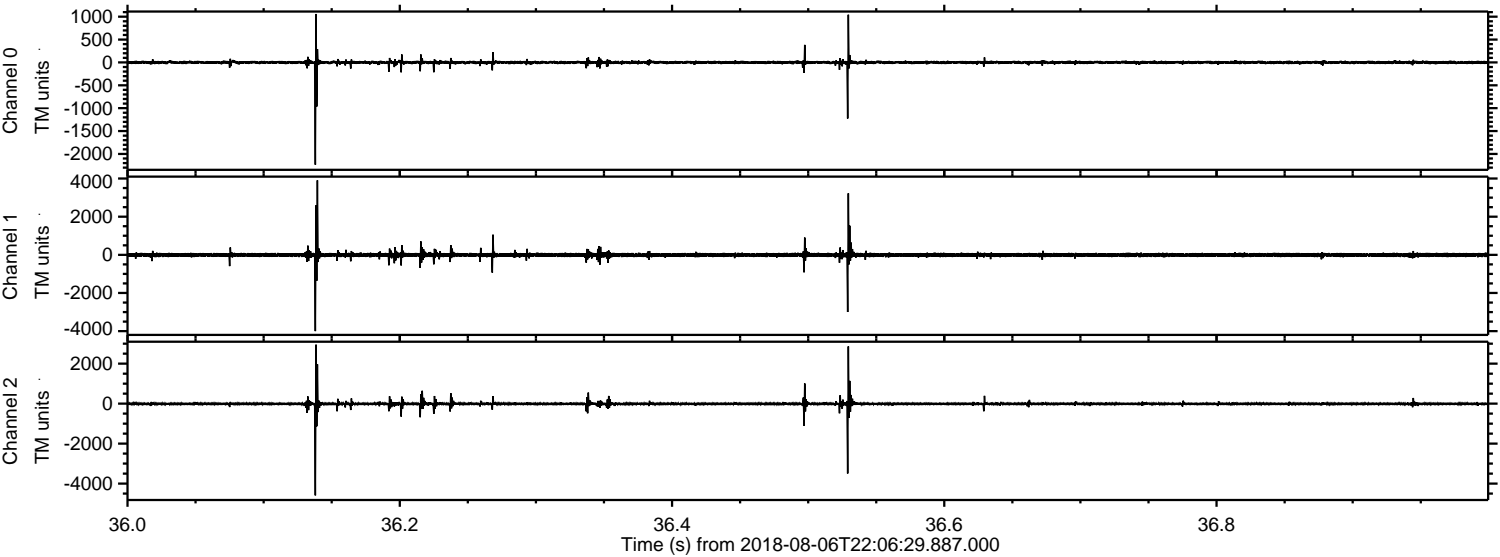
Channel 1
mn: -5036
mx: 3841
 μ : -6.6
 σ : 62.5

Channel 2
mn: -4721
mx: 3253
 μ : -7.4
 σ : 40.3

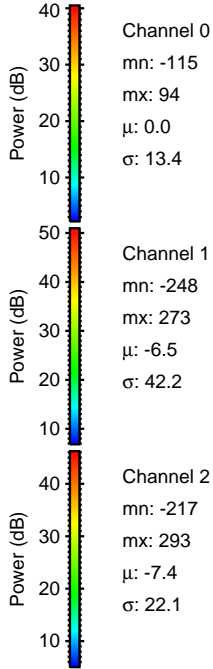
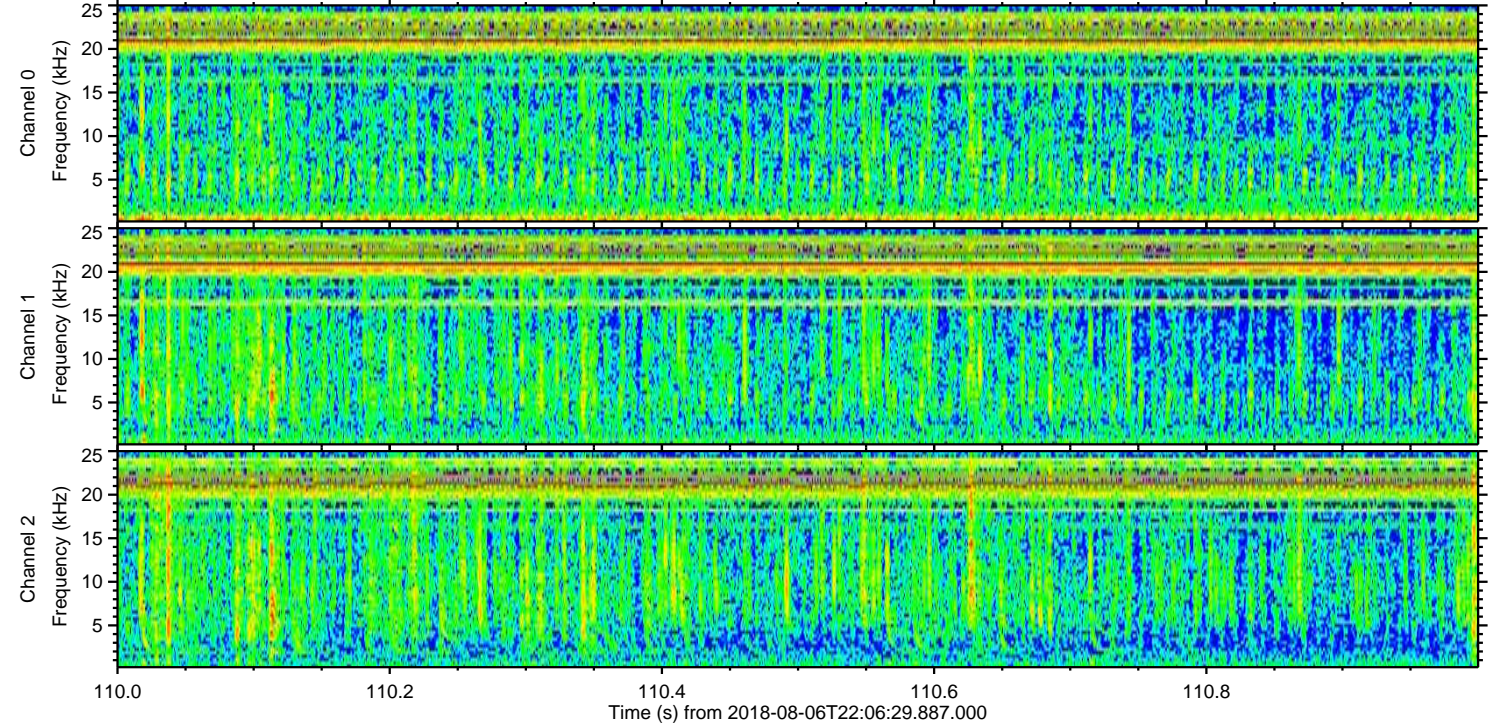
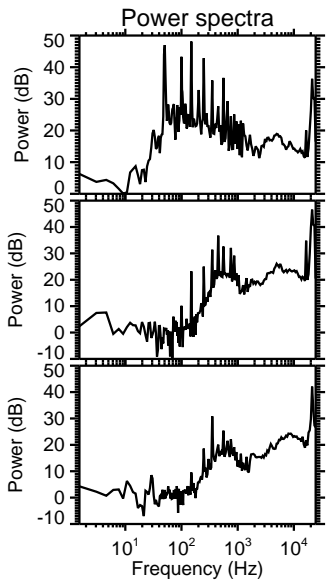
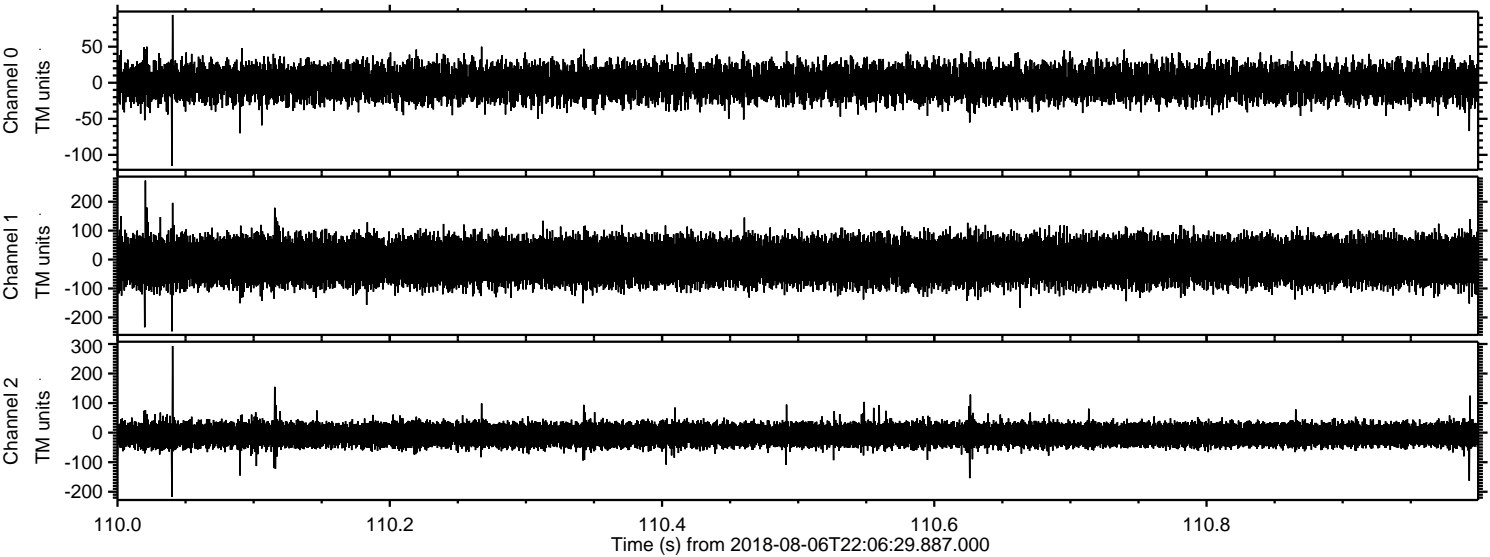
Processed Thu Aug 9 11:13:55 2018 by ELM ver.2012-10-06 from 001__elm20180806_220628__dat00.bin



Processed Thu Aug 9 11:13:55 2018 by ELM ver.2012-10-06 from 001__elm20180806_220628__dat00.bin



Processed Thu Aug 9 11:13:56 2018 by ELM ver.2012-10-06 from 001__elm20180806_220628__dat00.bin



Channel 0
mn: -115
mx: 94
 μ : 0.0
 σ : 13.4

Channel 1
mn: -248
mx: 273
 μ : -6.5
 σ : 42.2

Channel 2
mn: -217
mx: 293
 μ : -7.4
 σ : 22.1