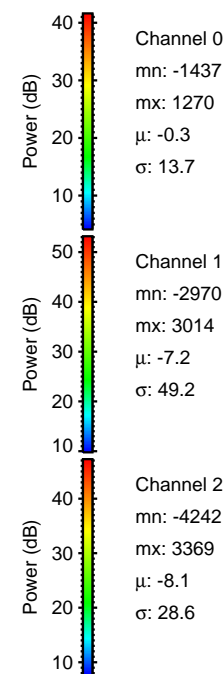
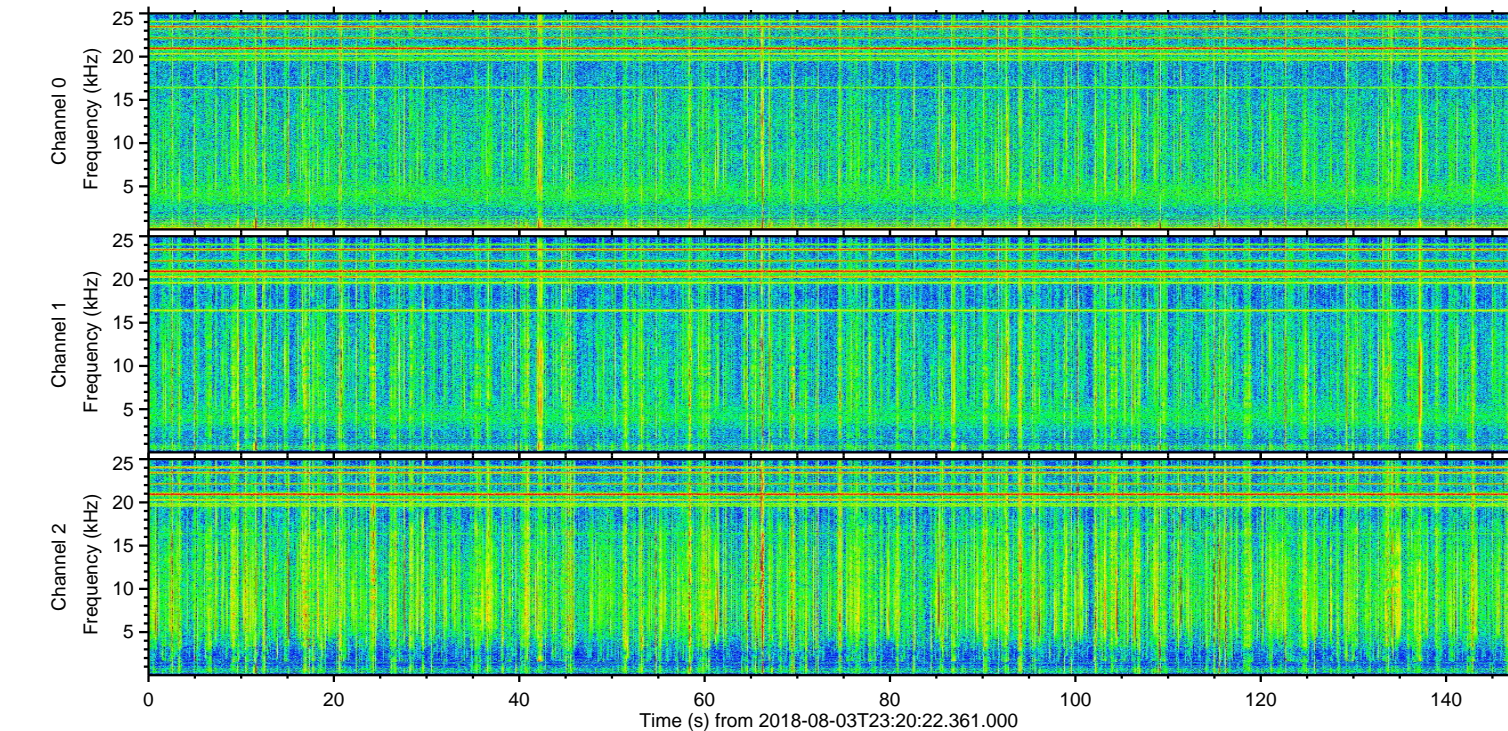
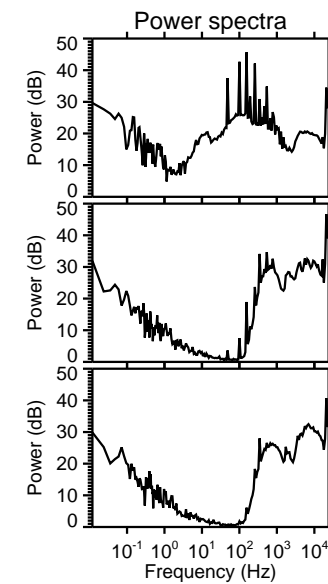
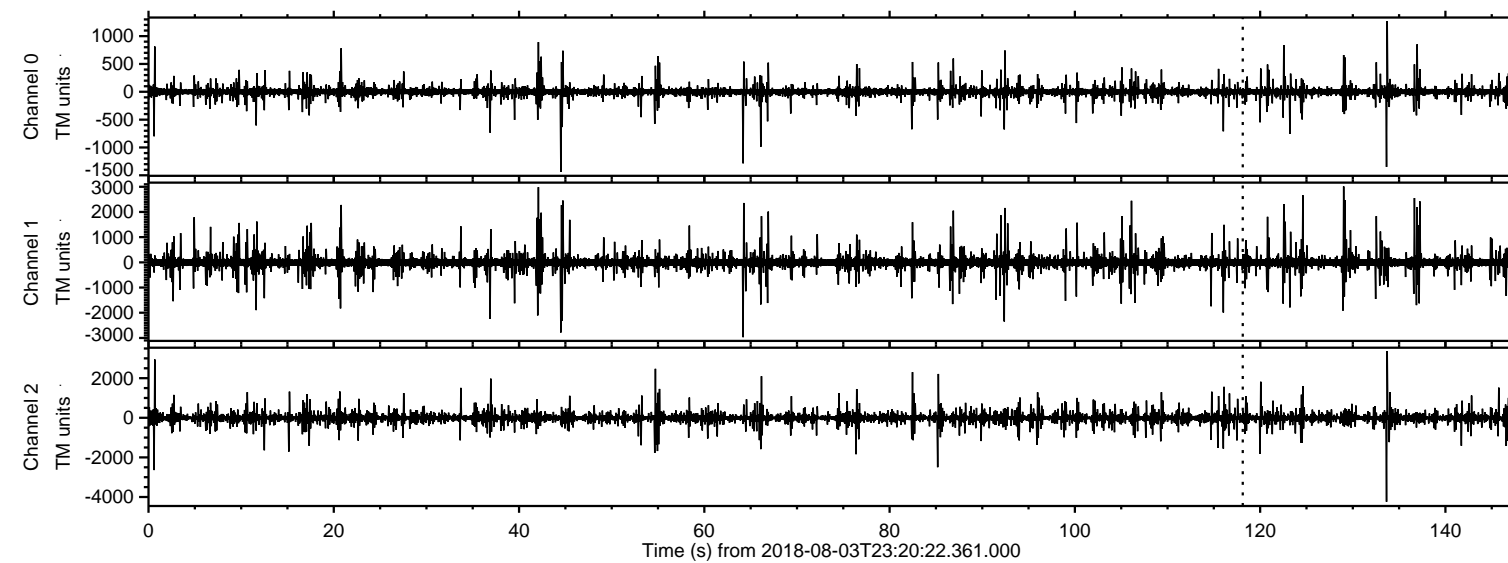


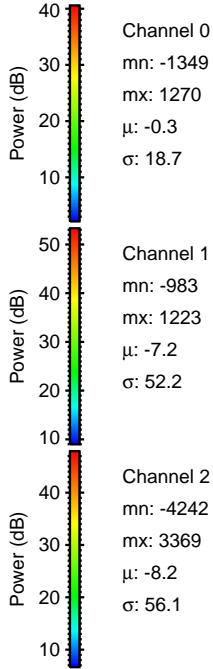
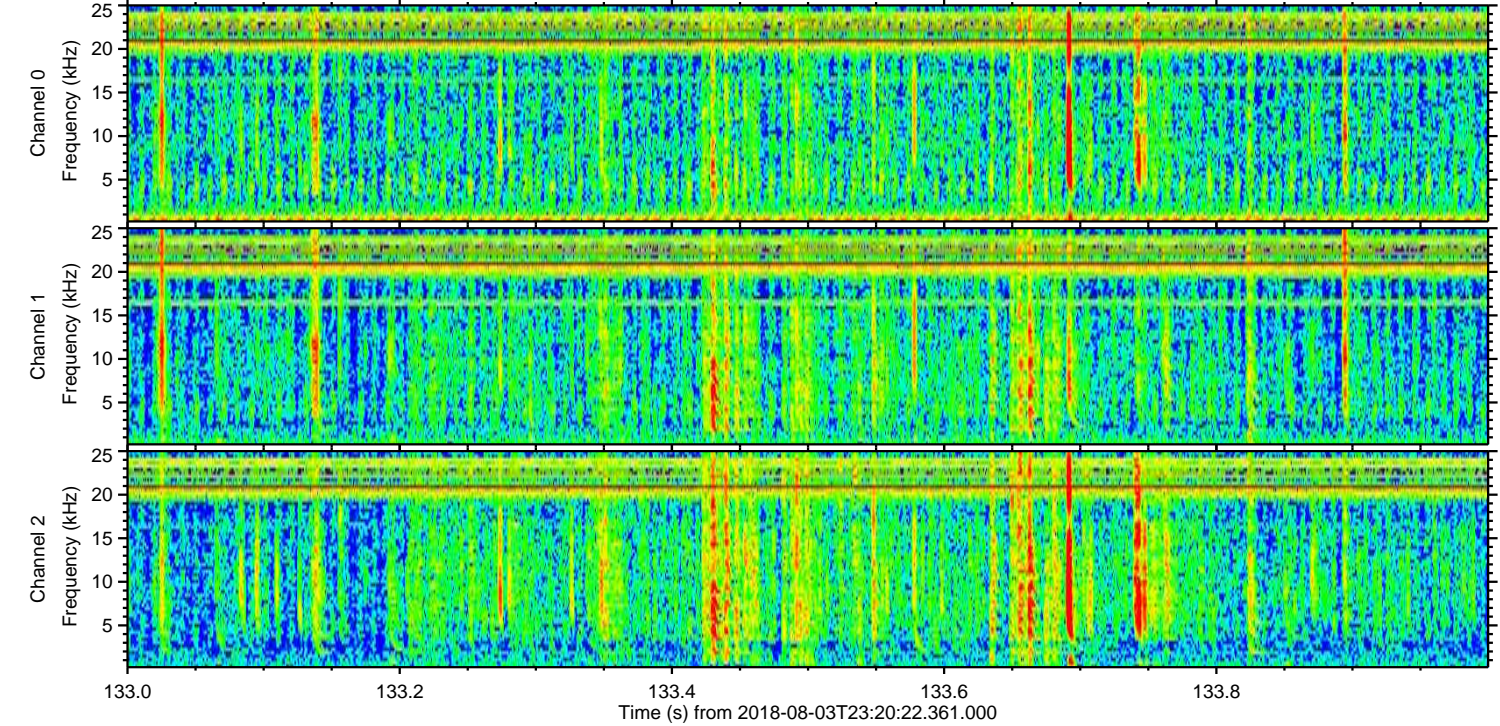
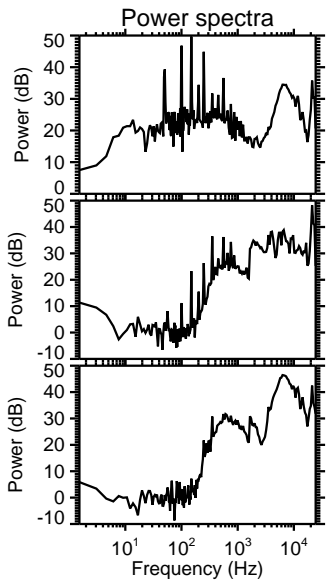
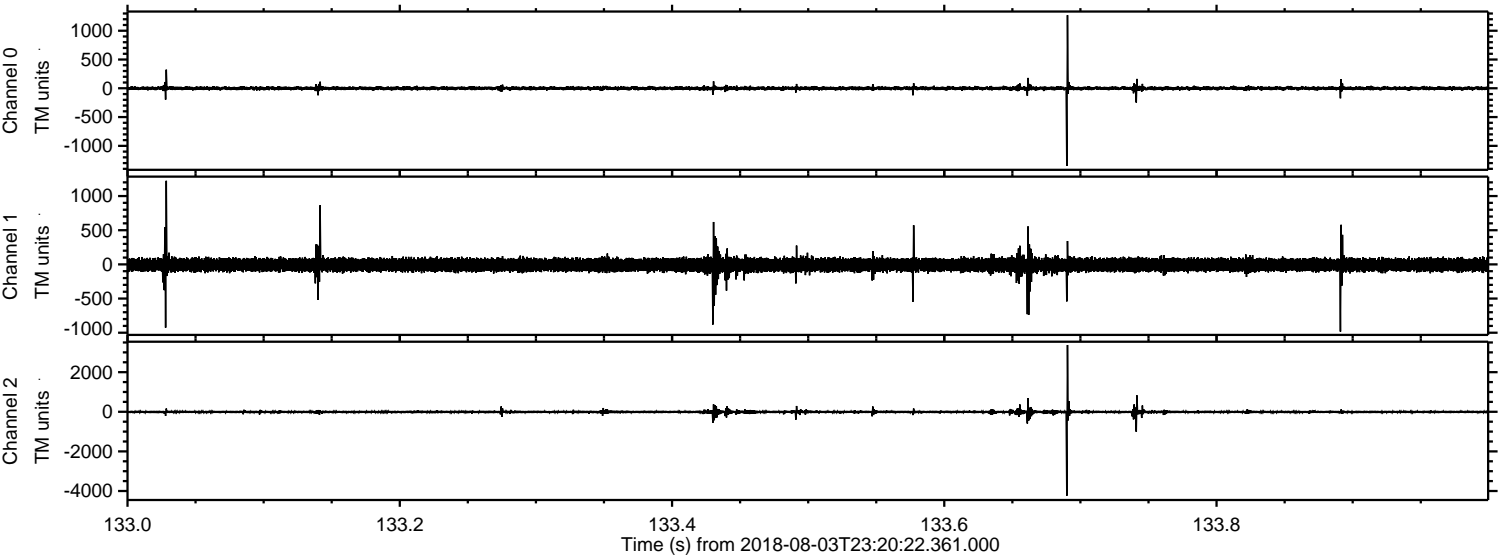
ELMAVAN 3D WAVEFORMS (Measured data sampled at 50 kHz) 50999 packets of 144 samples from 2018-08-03T23:20:22.361.000.

Processed Sat Aug 4 01:28:34 2018 by ELM ver.2012-10-06 from 001__elm20180803_232021__dat00.bin



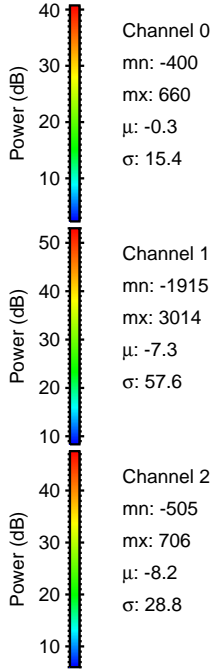
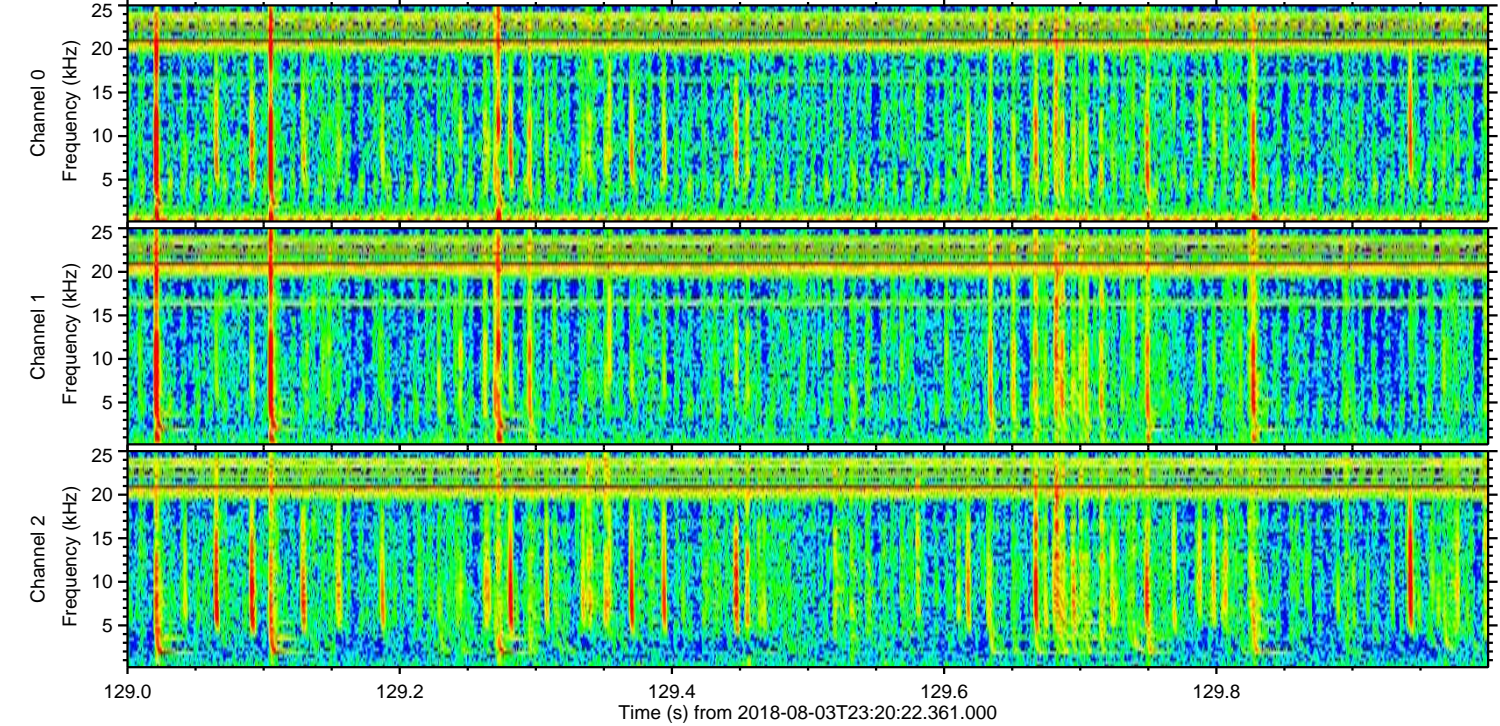
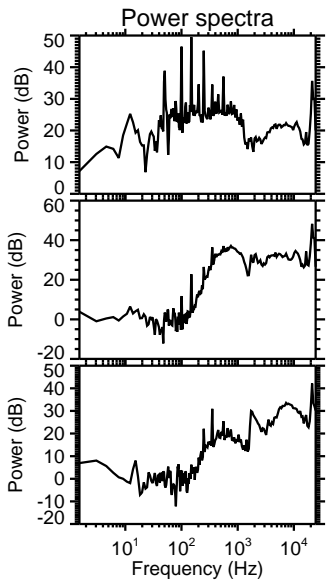
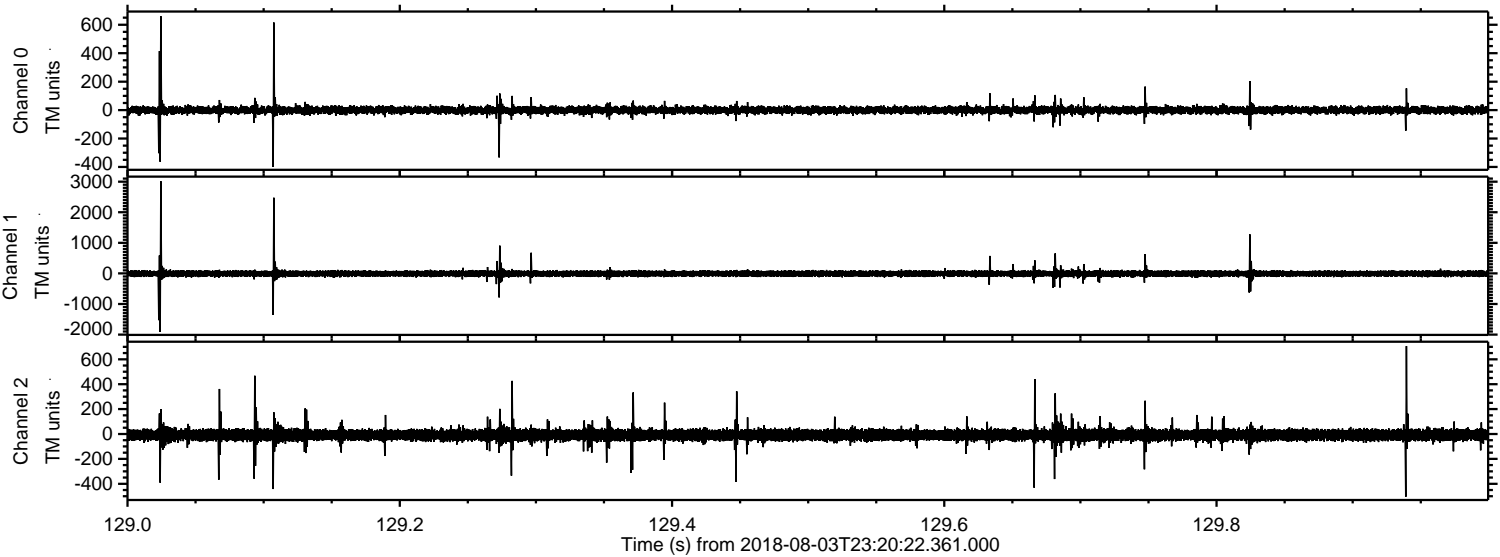
ELMAVAN 3D WAVEFORMS (Measured data sampled at 50 kHz) 50999 packets of 144 samples from 2018-08-03T23:20:22.361.000. Part 134/147

Processed Sat Aug 4 01:28:39 2018 by ELM ver.2012-10-06 from 001__elm20180803_232021__dat00.bin

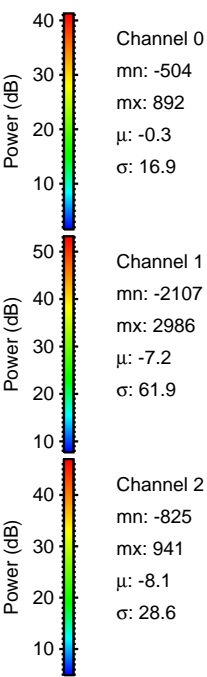
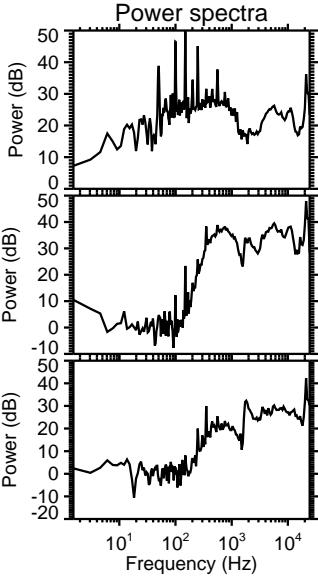
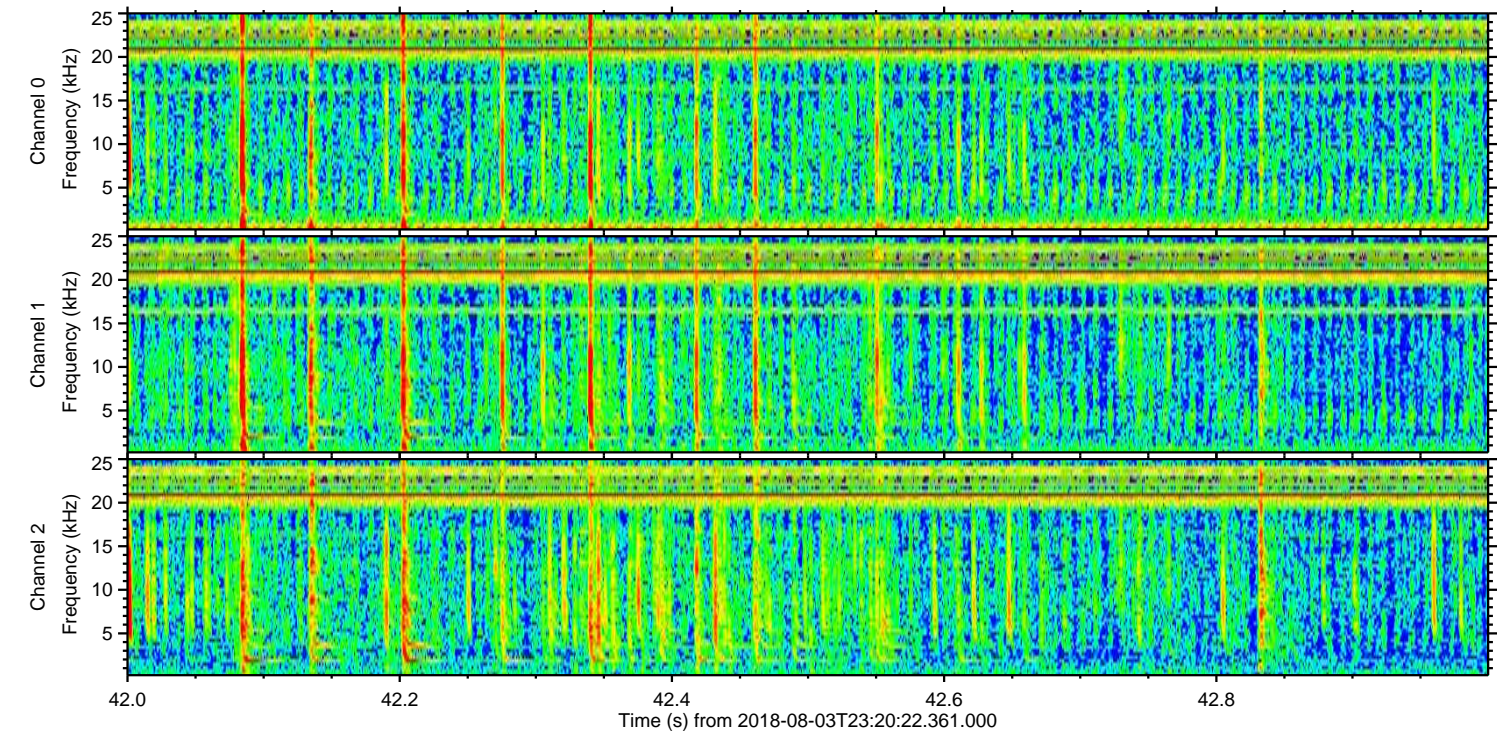
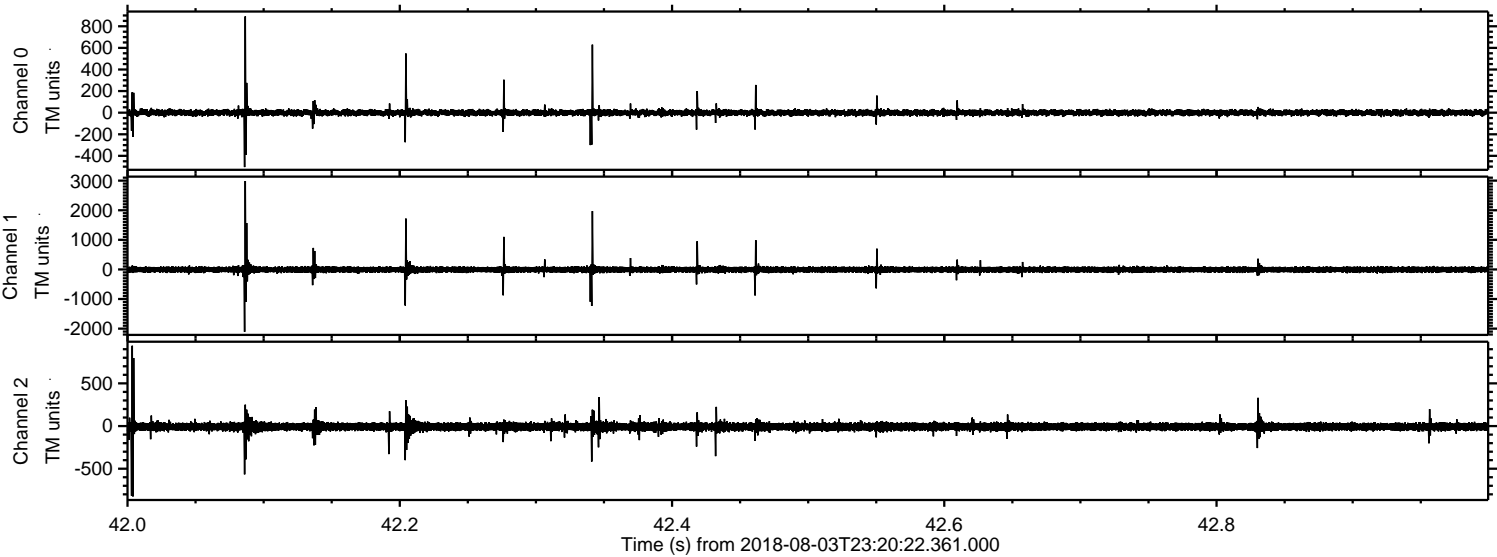


ELMAVAN 3D WAVEFORMS (Measured data sampled at 50 kHz) 50999 packets of 144 samples from 2018-08-03T23:20:22.361.000. Part 130/147

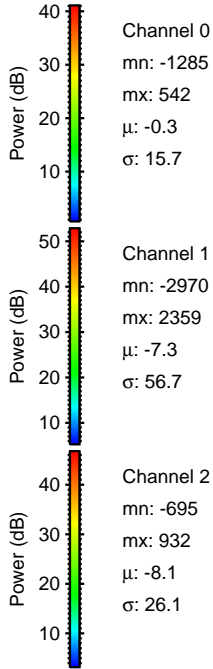
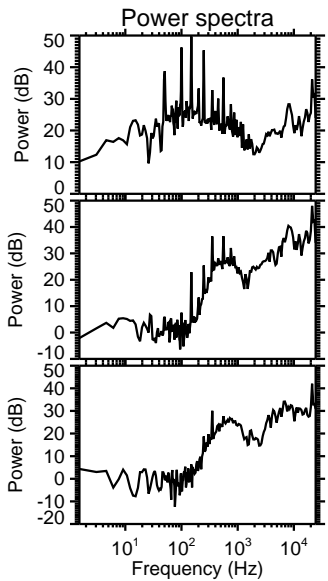
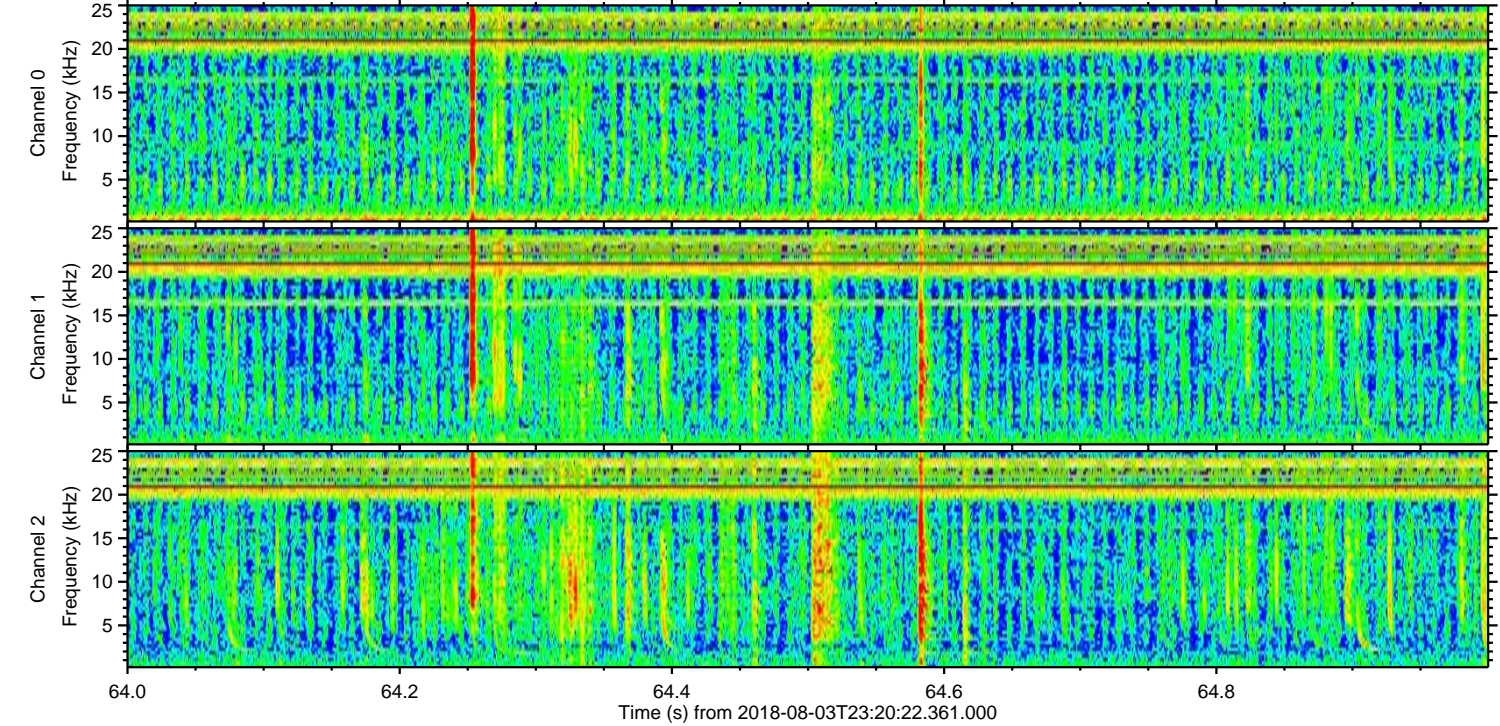
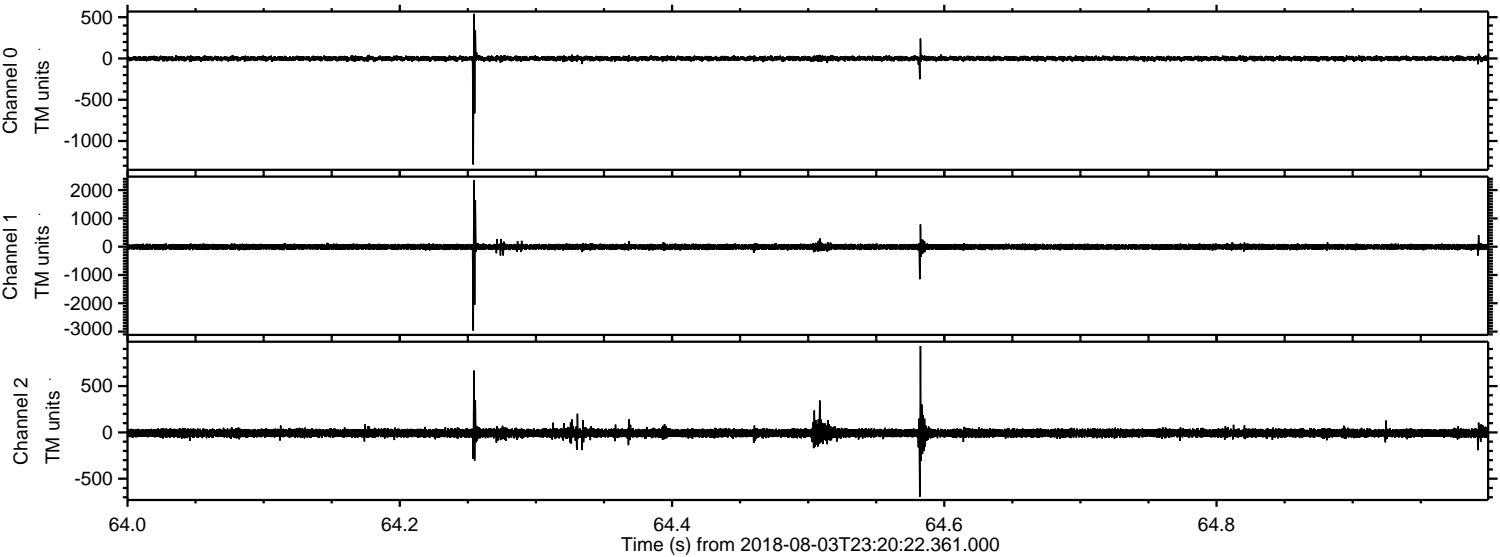
Processed Sat Aug 4 01:28:40 2018 by ELM ver.2012-10-06 from 001__elm20180803_232021__dat00.bin



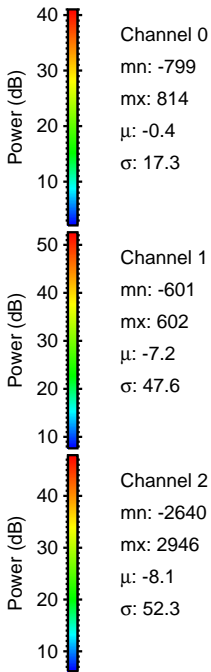
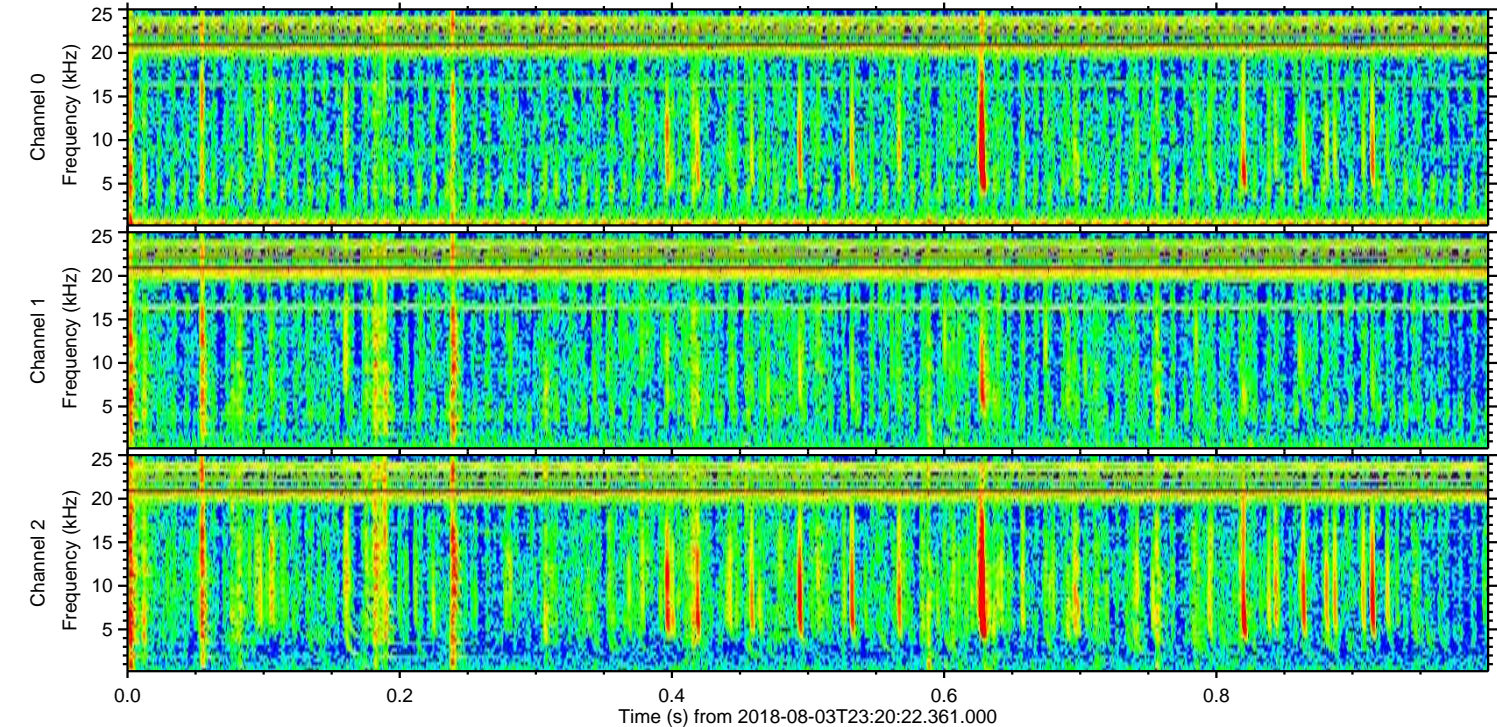
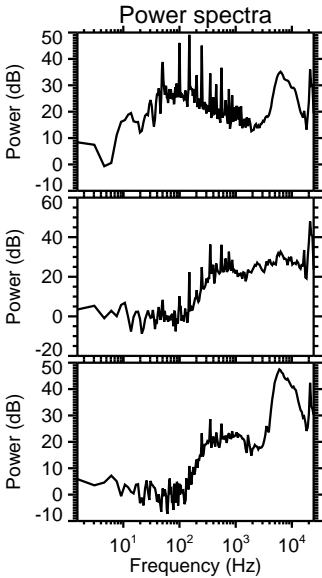
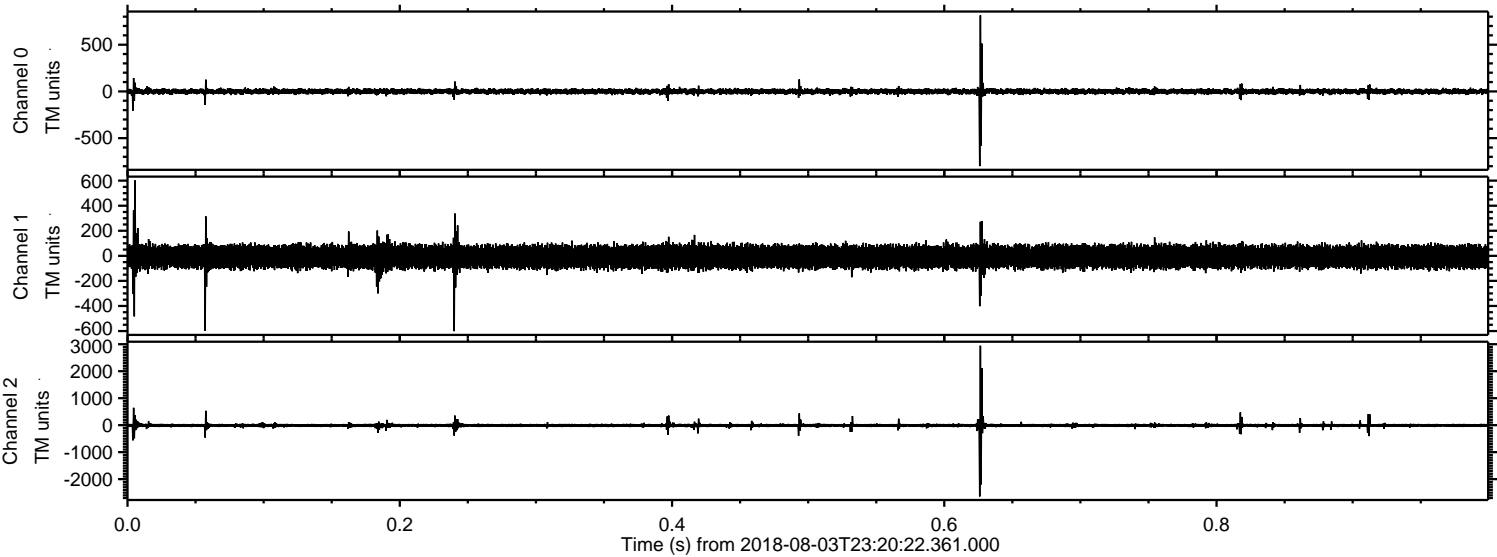
Processed Sat Aug 4 01:28:41 2018 by ELM ver.2012-10-06 from 001__elm20180803_232021__dat00.bin



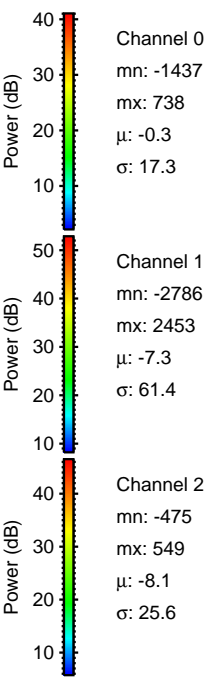
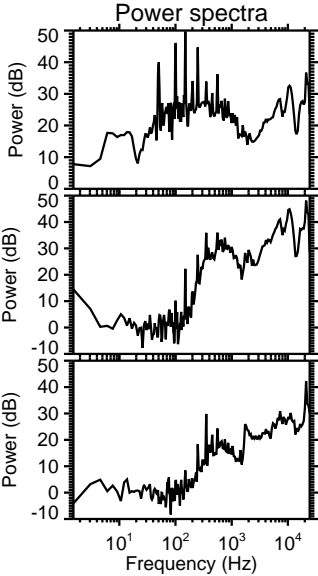
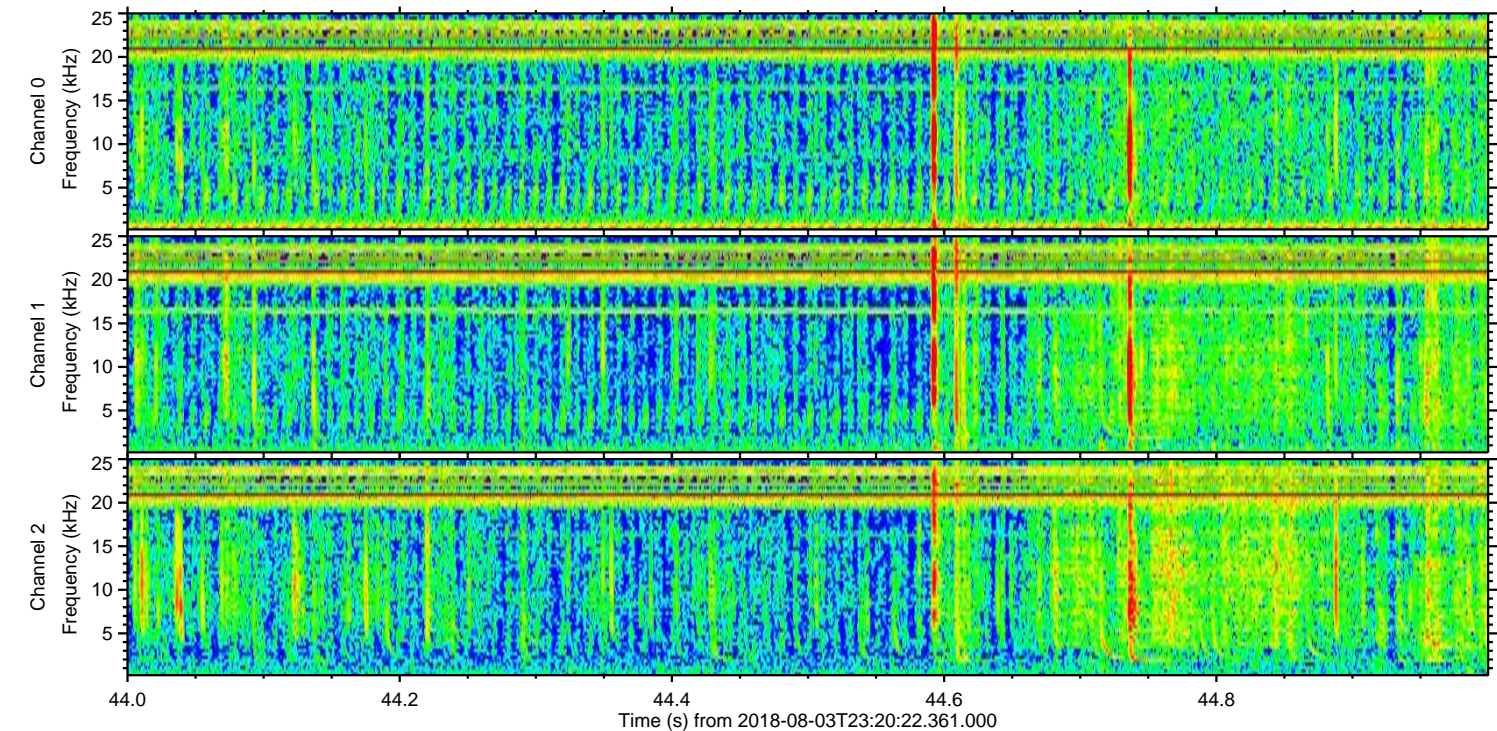
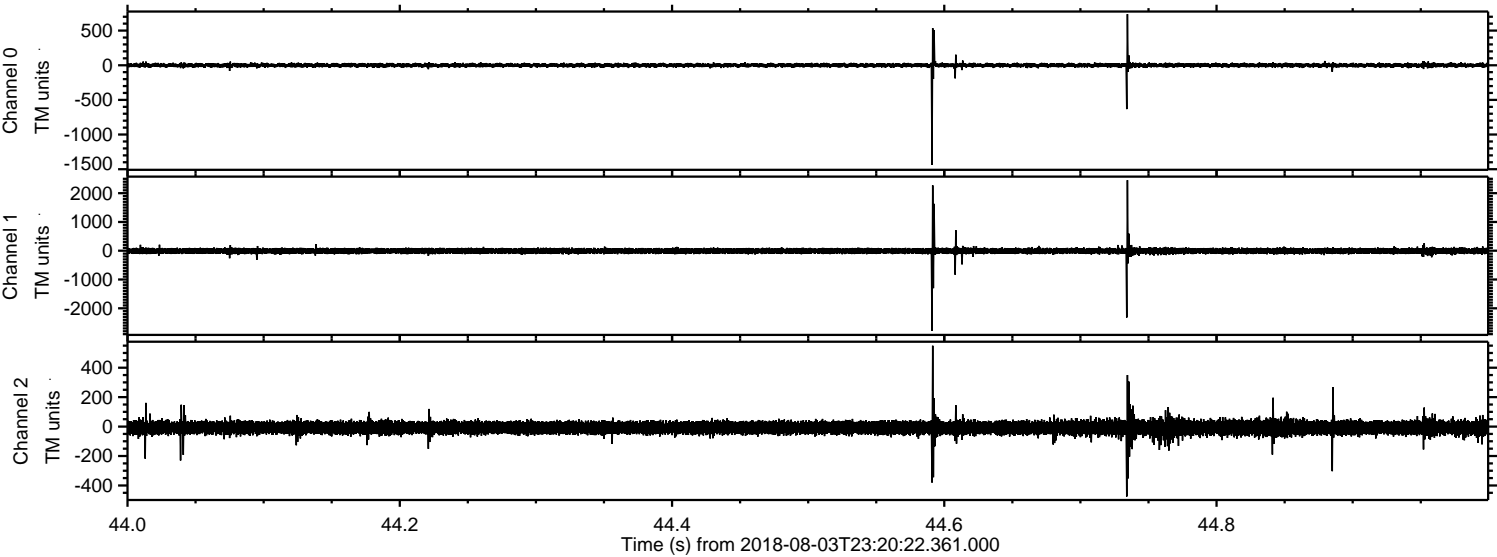
Processed Sat Aug 4 01:28:41 2018 by ELM ver.2012-10-06 from 001__elm20180803_232021__dat00.bin



Processed Sat Aug 4 01:28:42 2018 by ELM ver.2012-10-06 from 001__elm20180803_232021__dat00.bin

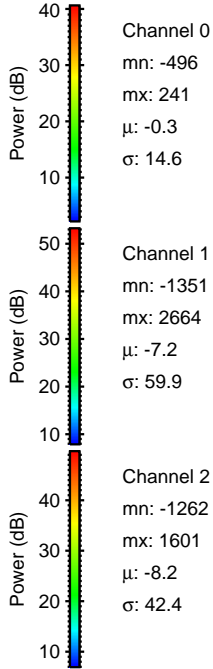
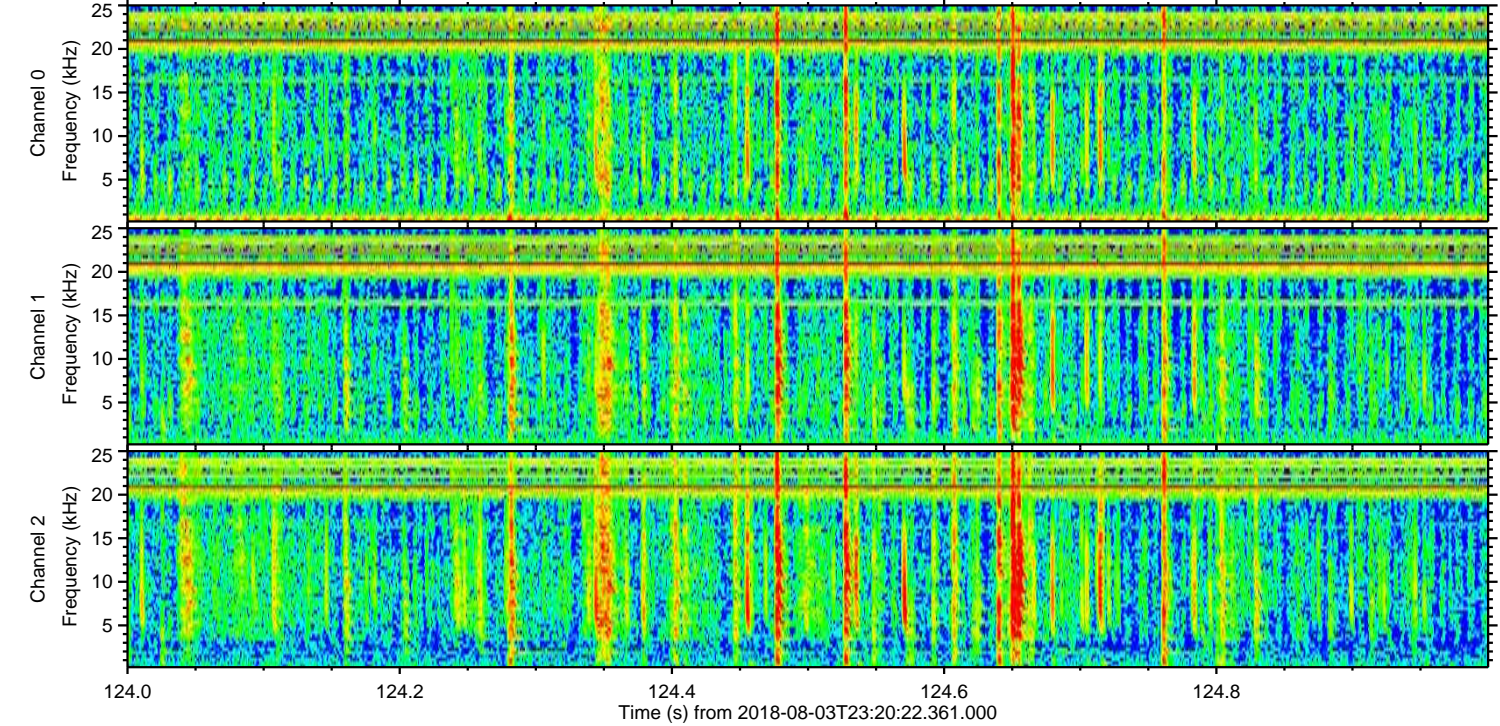
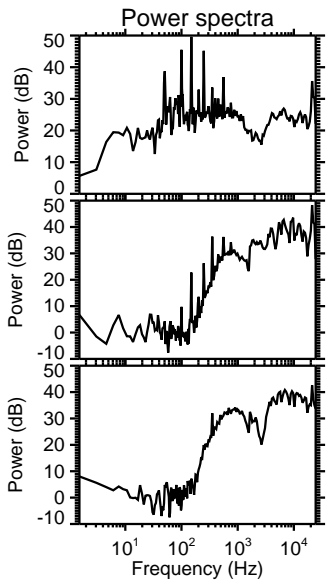
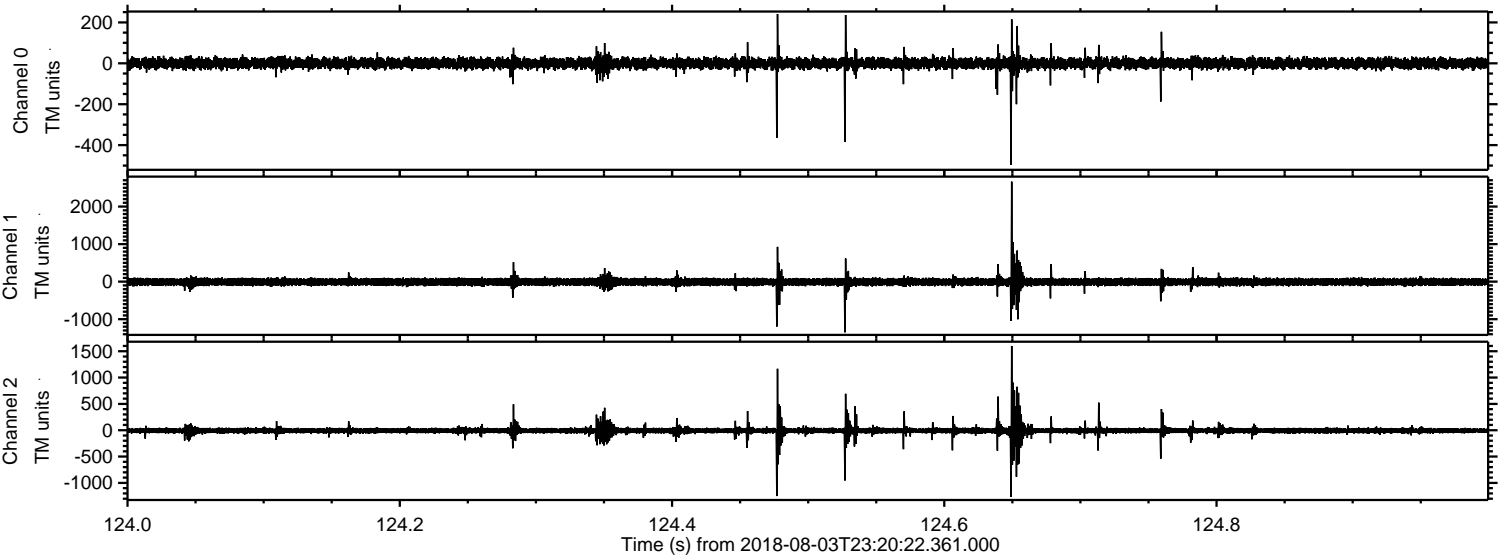


Processed Sat Aug 4 01:28:43 2018 by ELM ver.2012-10-06 from 001__elm20180803_232021__dat00.bin



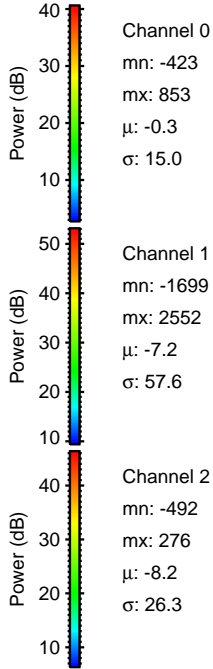
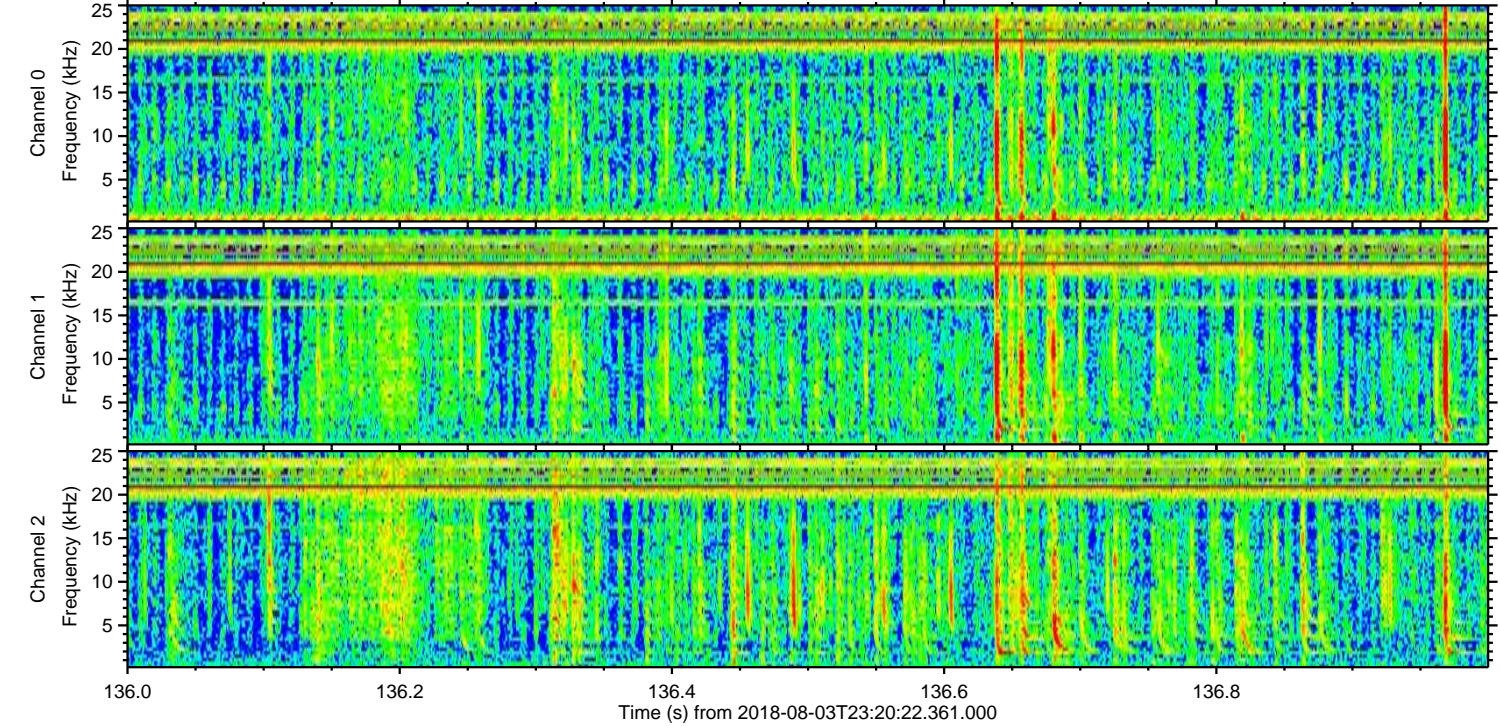
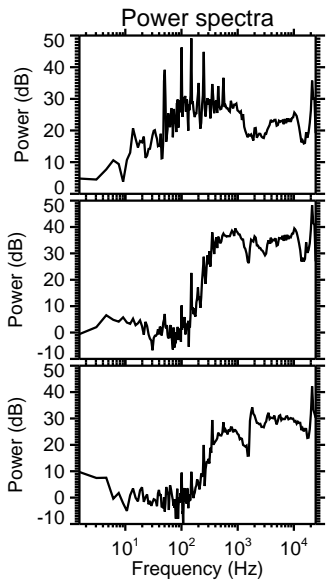
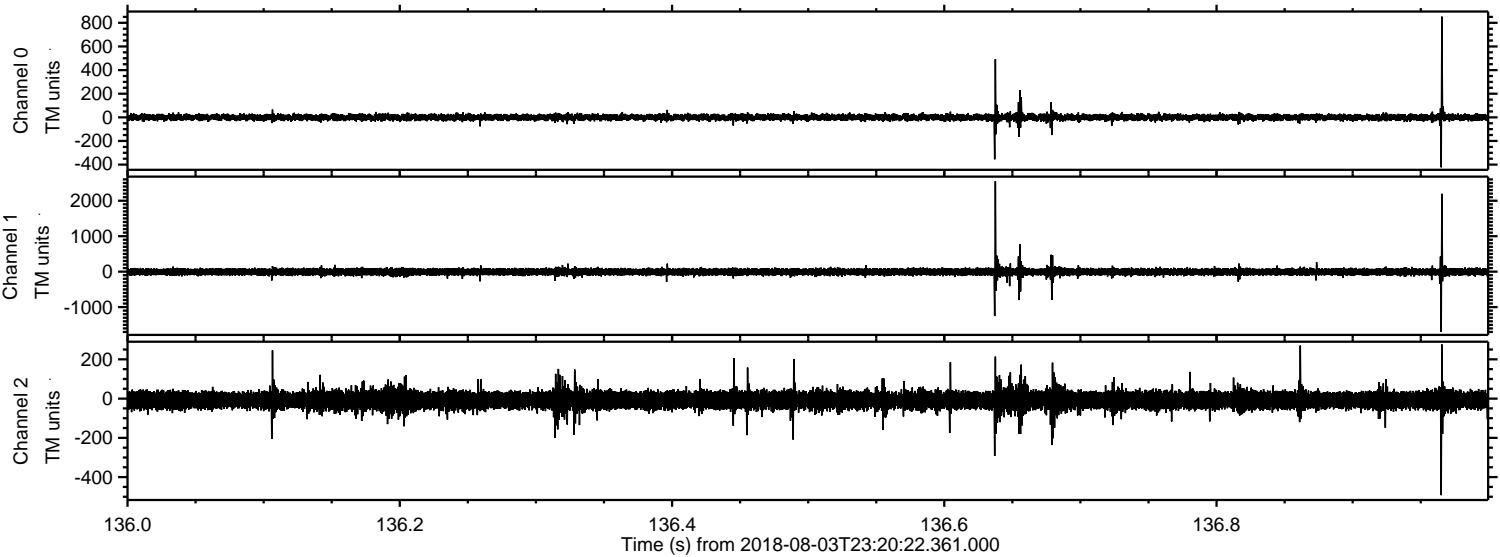
ELMAVAN 3D WAVEFORMS (Measured data sampled at 50 kHz) 50999 packets of 144 samples from 2018-08-03T23:20:22.361.000. Part 125/147

Processed Sat Aug 4 01:28:43 2018 by ELM ver.2012-10-06 from 001__elm20180803_232021__dat00.bin



ELMAVAN 3D WAVEFORMS (Measured data sampled at 50 kHz) 50999 packets of 144 samples from 2018-08-03T23:20:22.361.000. Part 137/147

Processed Sat Aug 4 01:28:44 2018 by ELM ver.2012-10-06 from 001__elm20180803_232021__dat00.bin



Channel 0
mn: -423
mx: 853
 μ : -0.3
 σ : 15.0

Channel 1
mn: -1699
mx: 2552
 μ : -7.2
 σ : 57.6

Channel 2
mn: -492
mx: 276
 μ : -8.2
 σ : 26.3

Processed Sat Aug 4 01:28:45 2018 by ELM ver.2012-10-06 from 001__elm20180803_232021__dat00.bin

