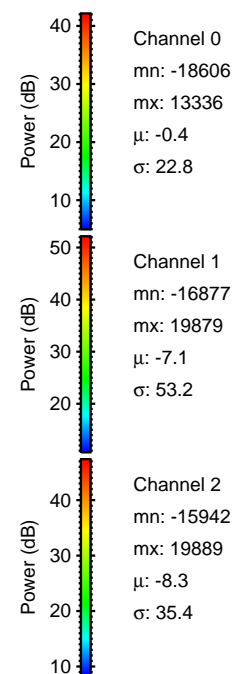
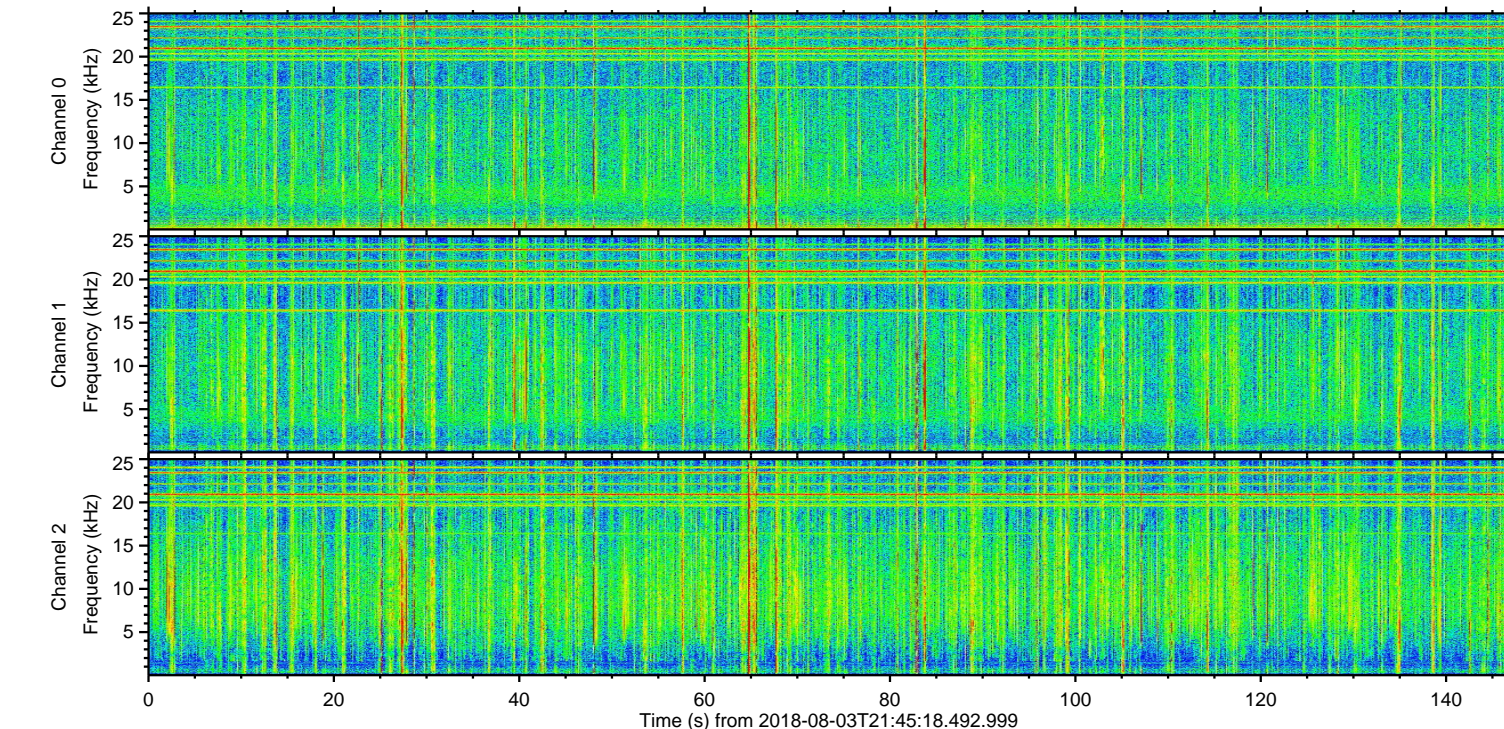
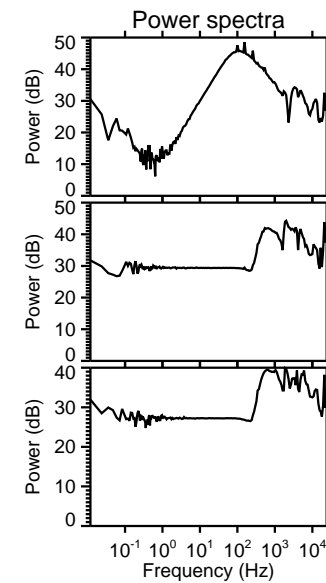
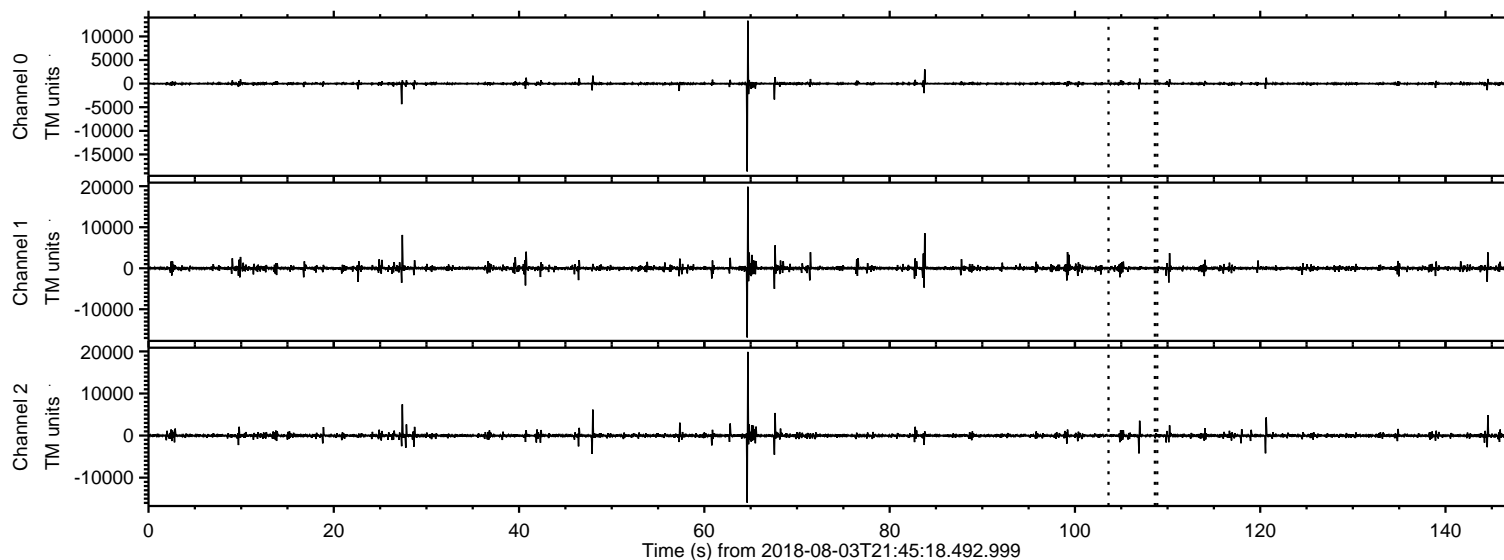
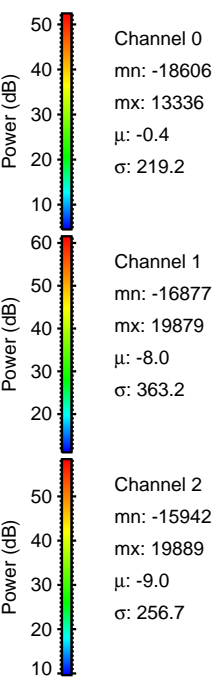
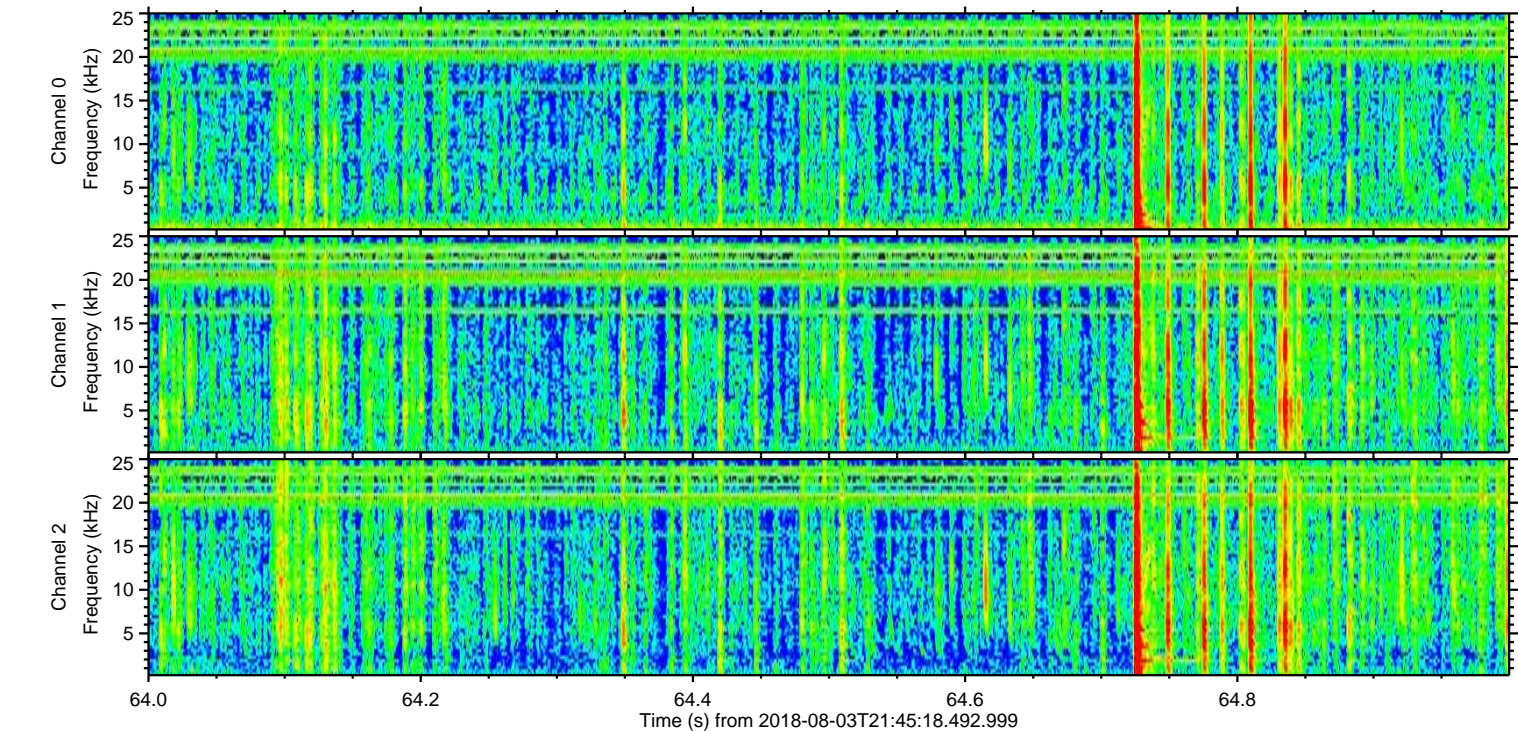
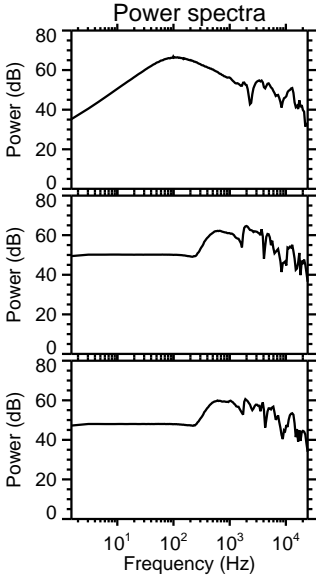
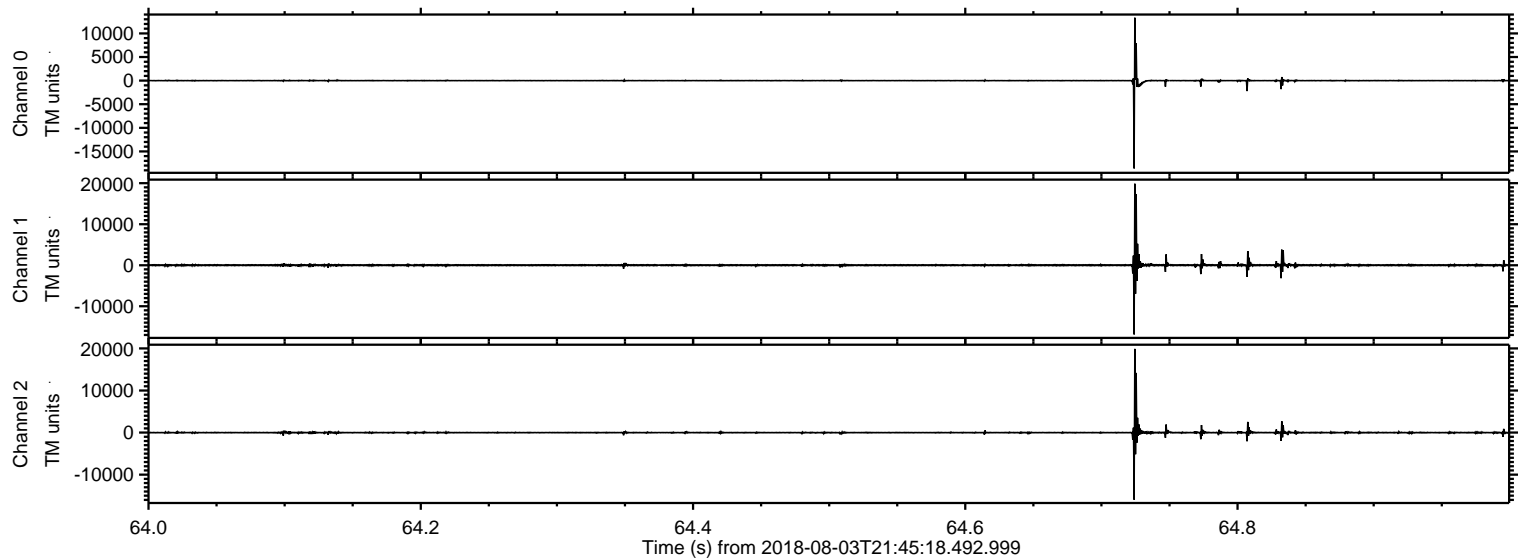


ELMAVAN 3D WAVEFORMS (Measured data sampled at 50 kHz) 50997 packets of 144 samples from 2018-08-03T21:45:18.492.999.

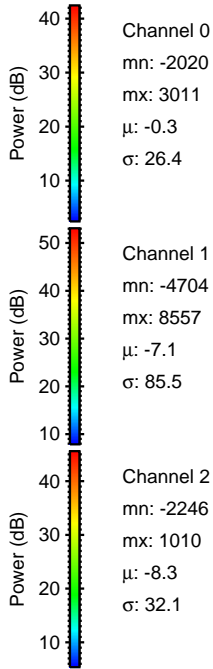
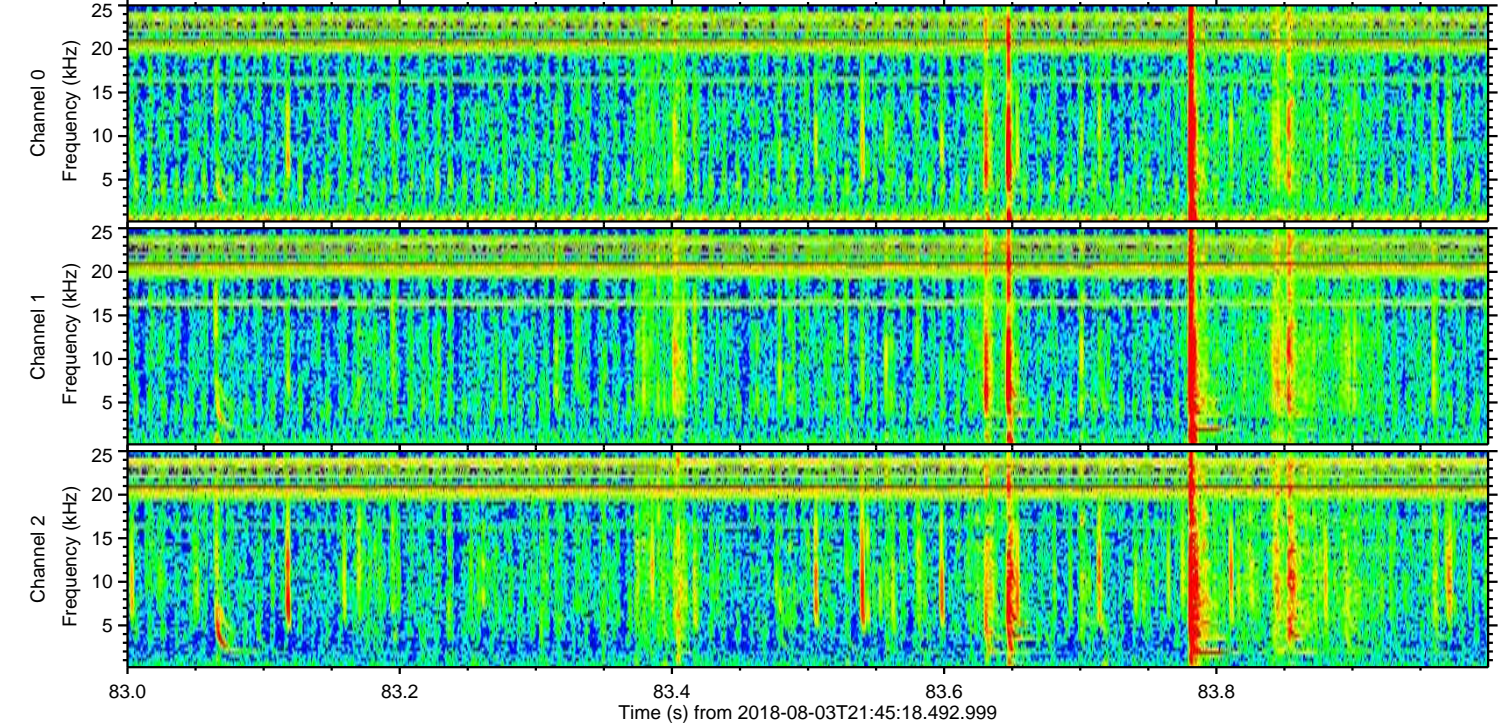
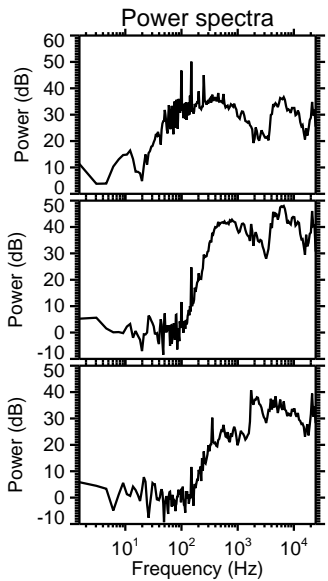
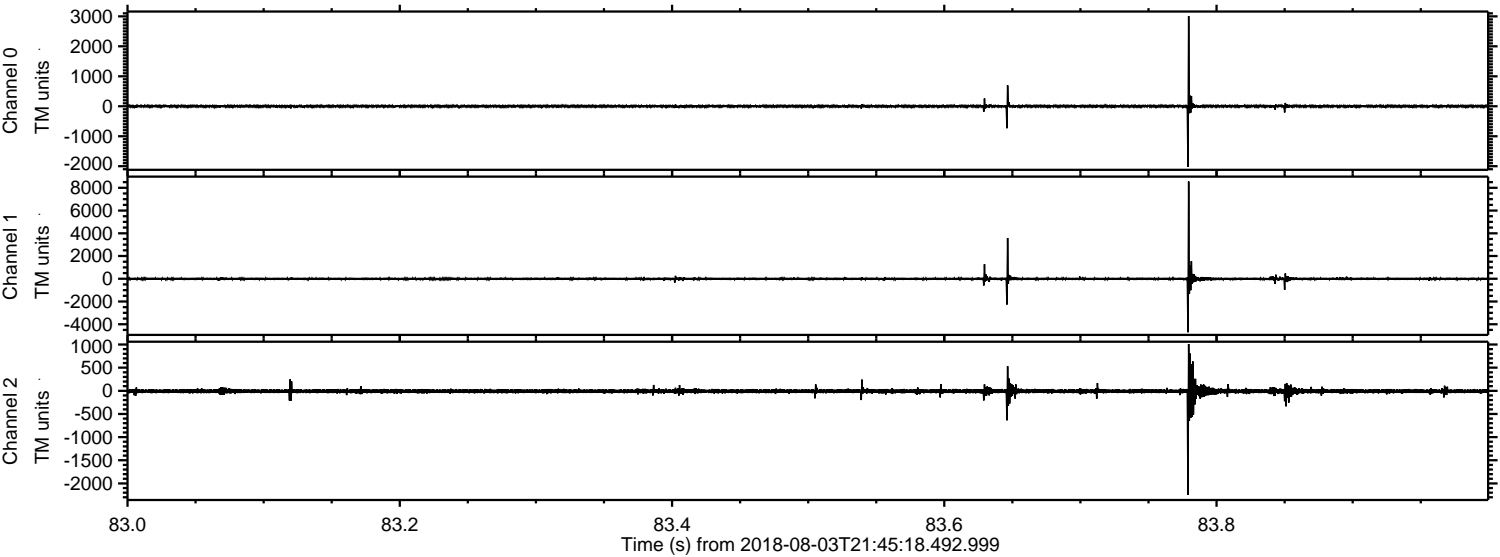
Processed Fri Aug 3 23:52:36 2018 by ELM ver.2012-10-06 from 001__elm20180803_214517__dat00.bin



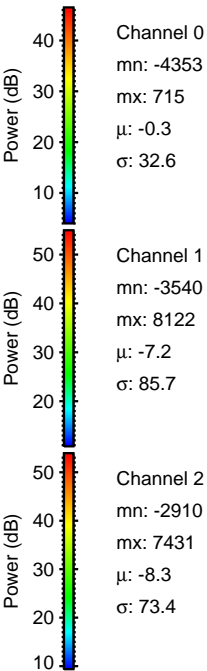
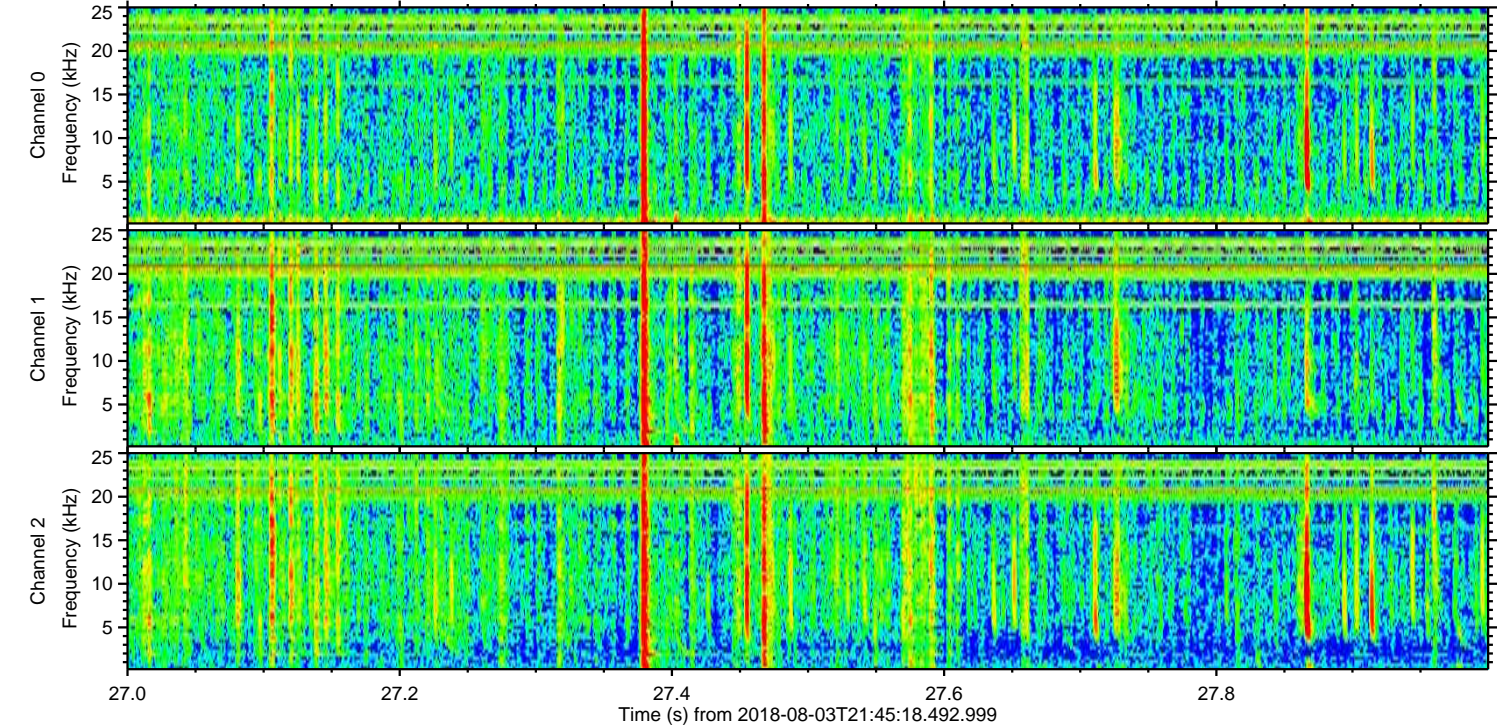
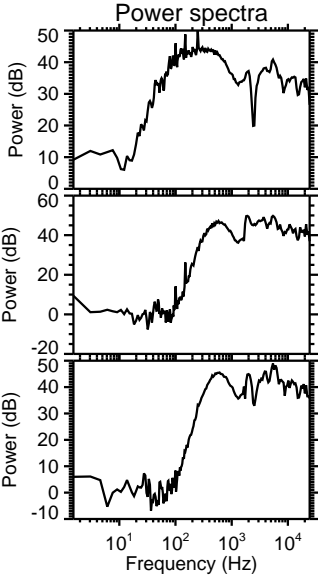
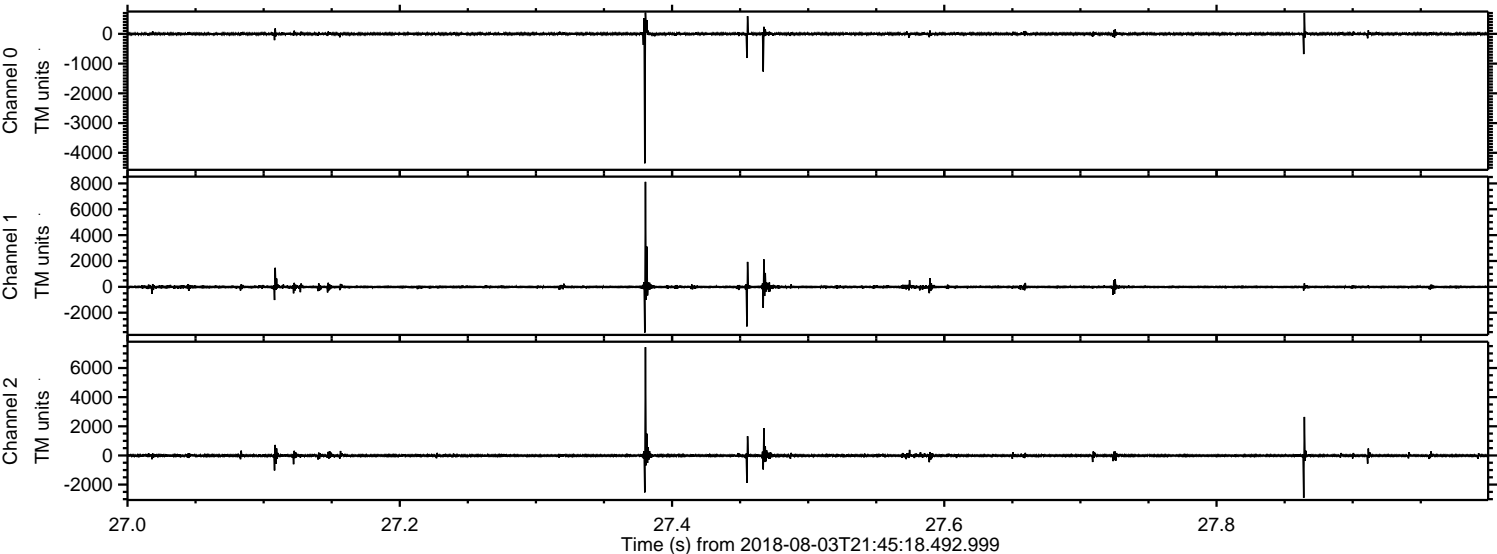
Processed Fri Aug 3 23:52:42 2018 by ELM ver.2012-10-06 from 001__elm20180803_214517__dat00.bin



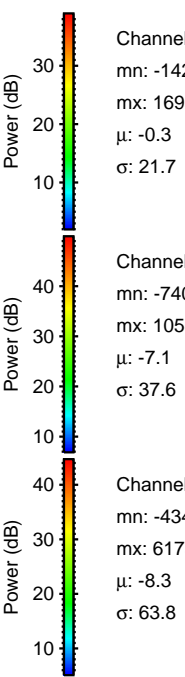
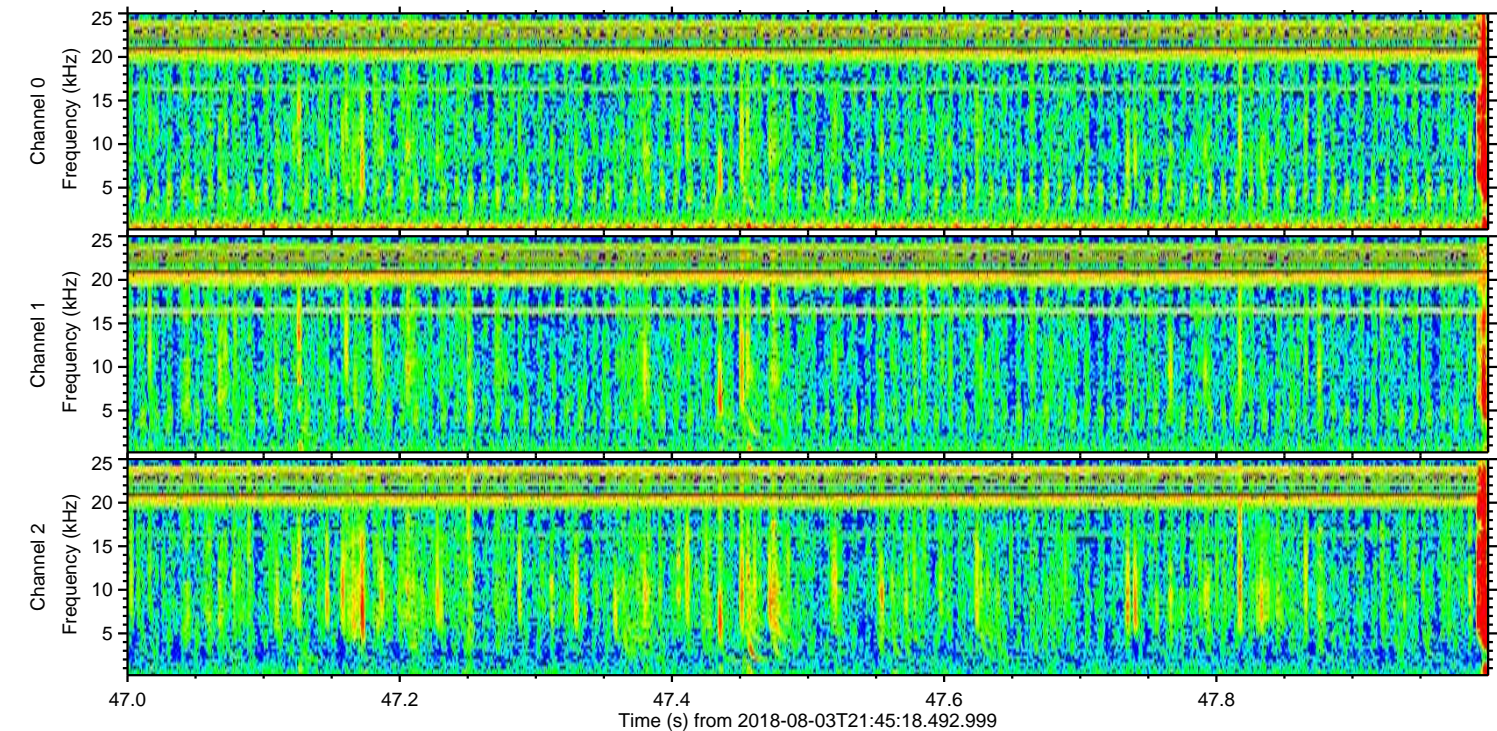
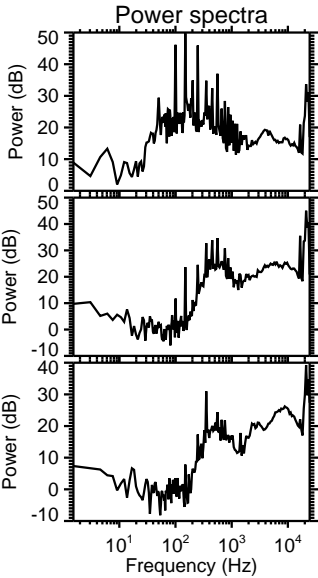
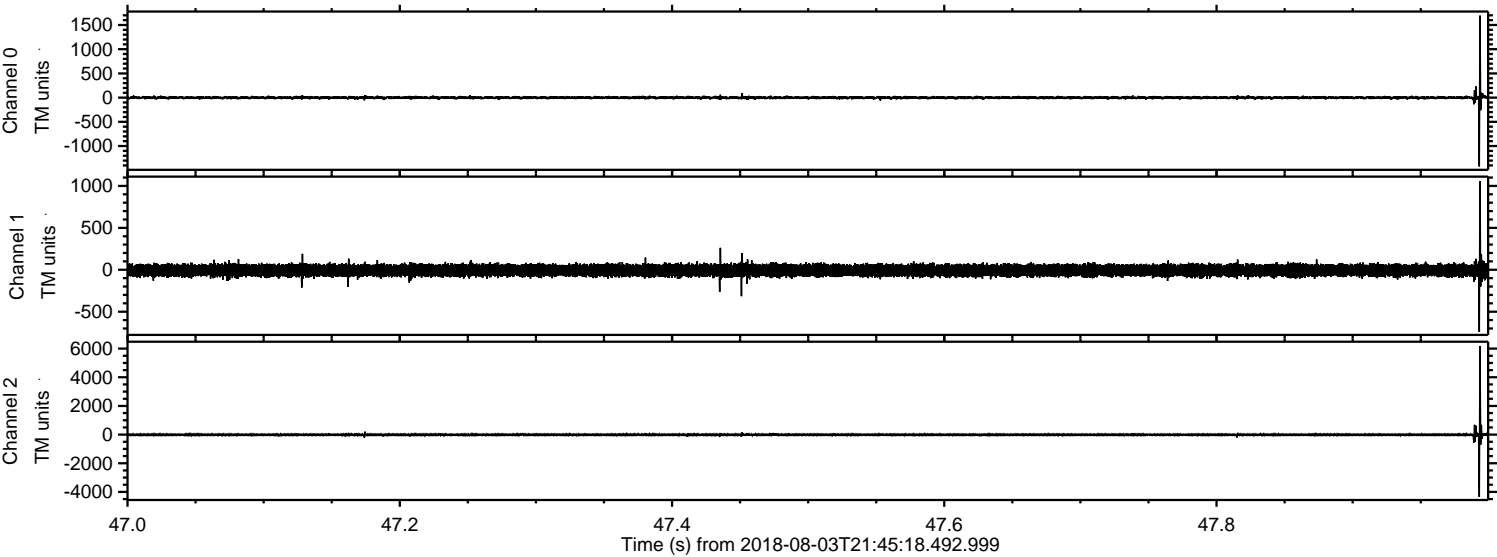
Processed Fri Aug 3 23:52:43 2018 by ELM ver.2012-10-06 from 001__elm20180803_214517__dat00.bin



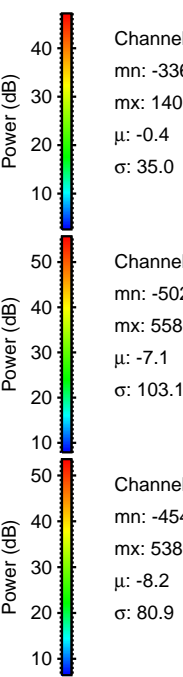
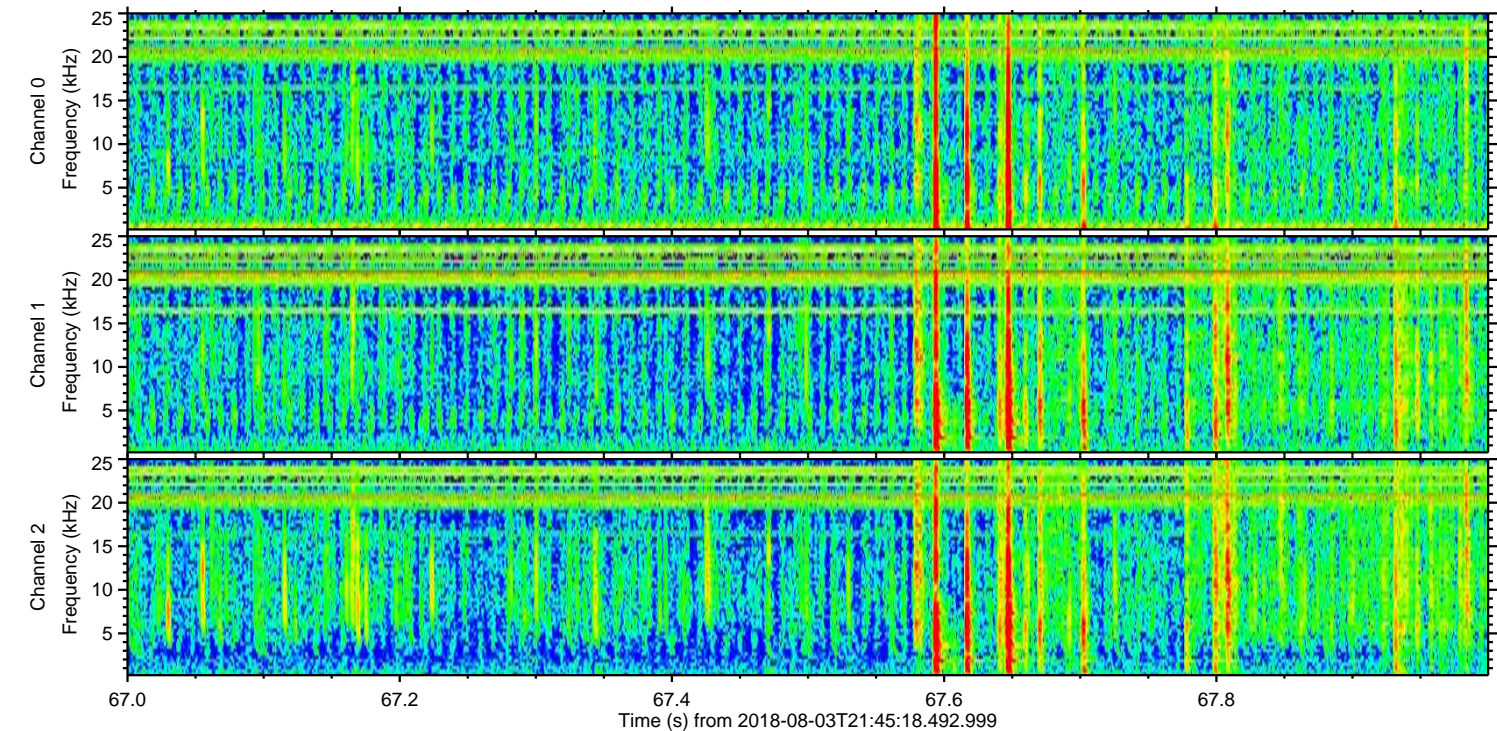
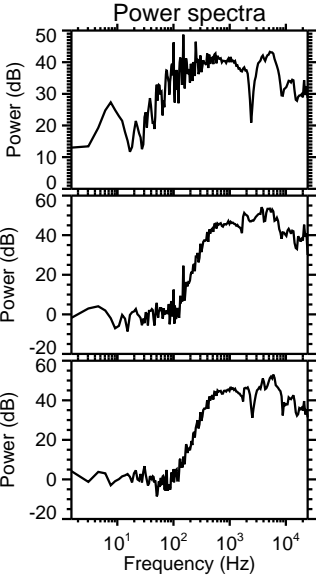
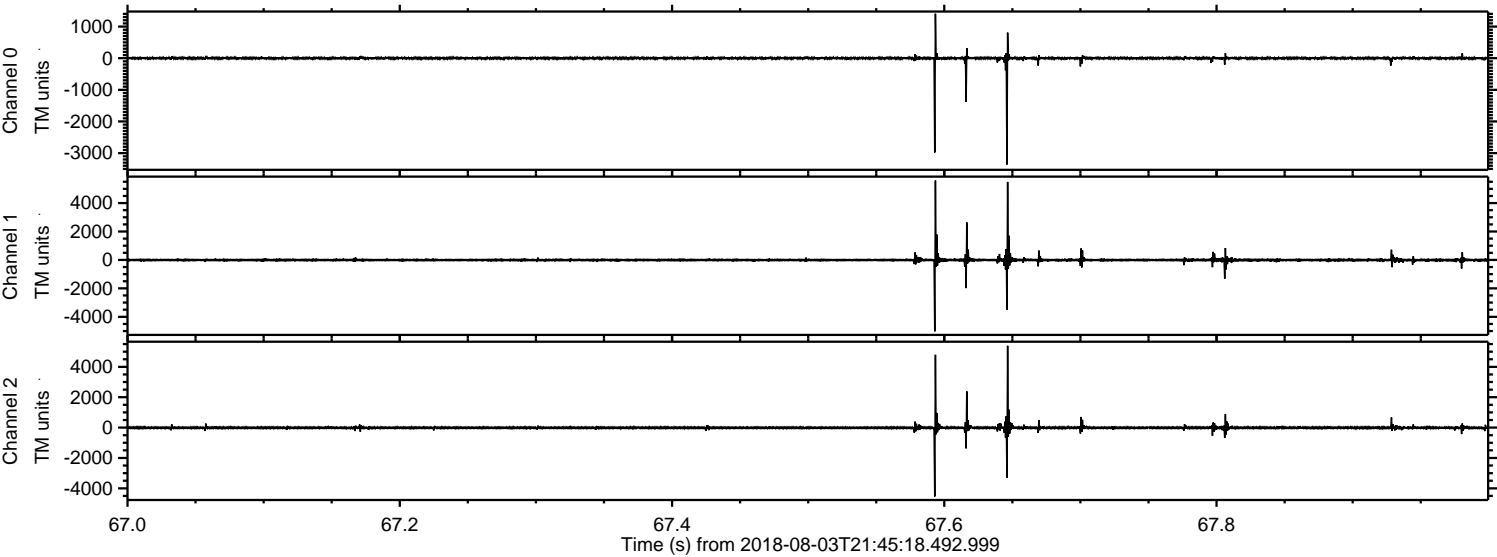
Processed Fri Aug 3 23:52:43 2018 by ELM ver.2012-10-06 from 001__elm20180803_214517__dat00.bin



Processed Fri Aug 3 23:52:44 2018 by ELM ver.2012-10-06 from 001__elm20180803_214517__dat00.bin

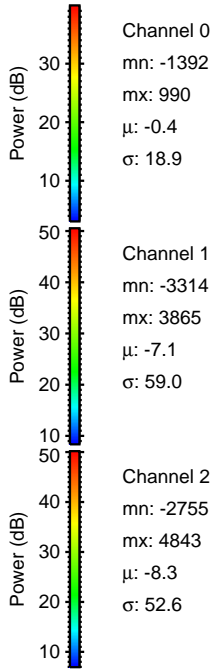
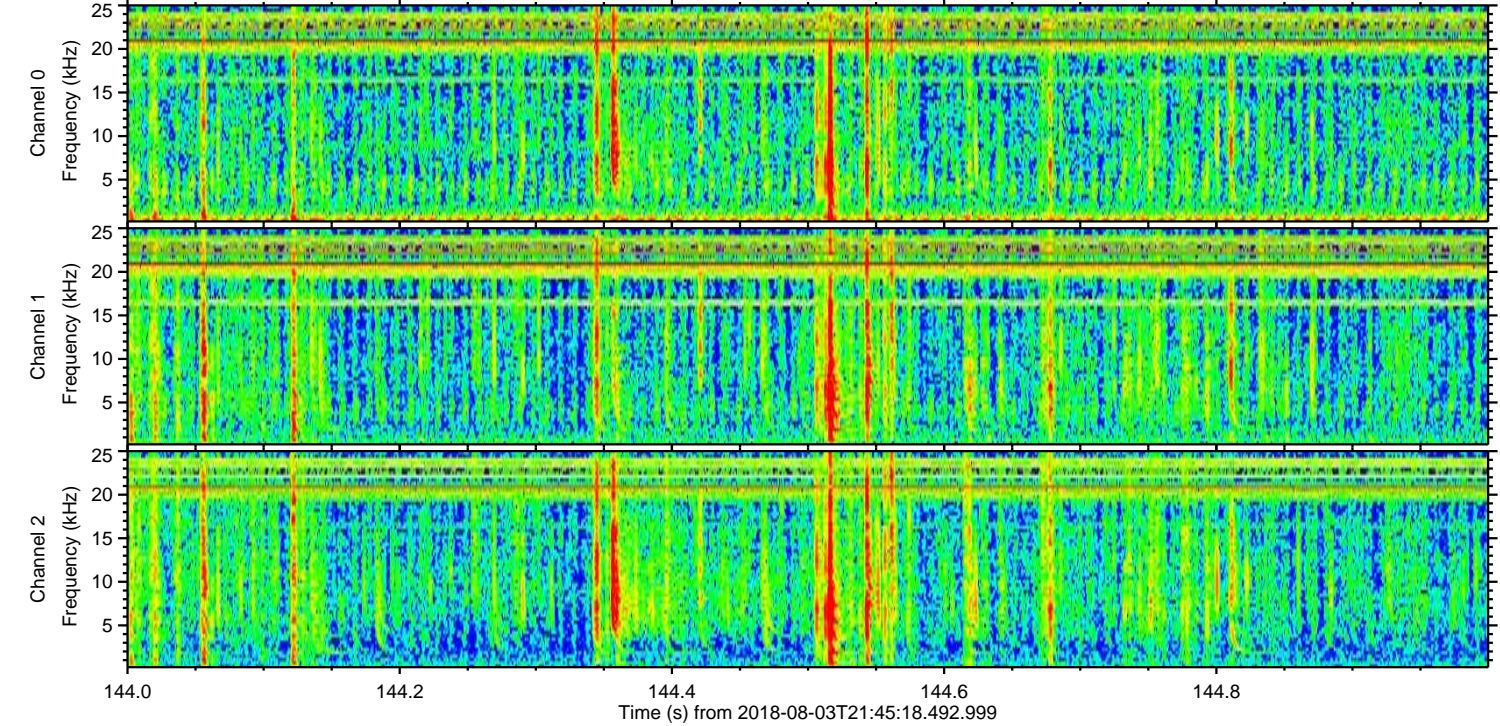
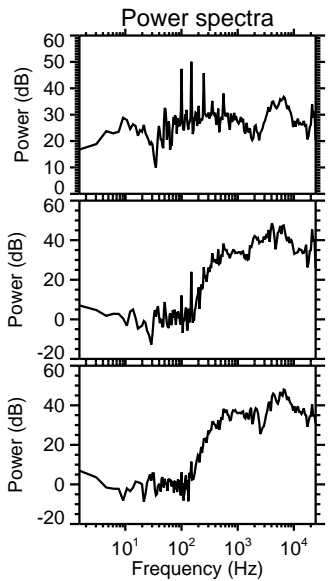
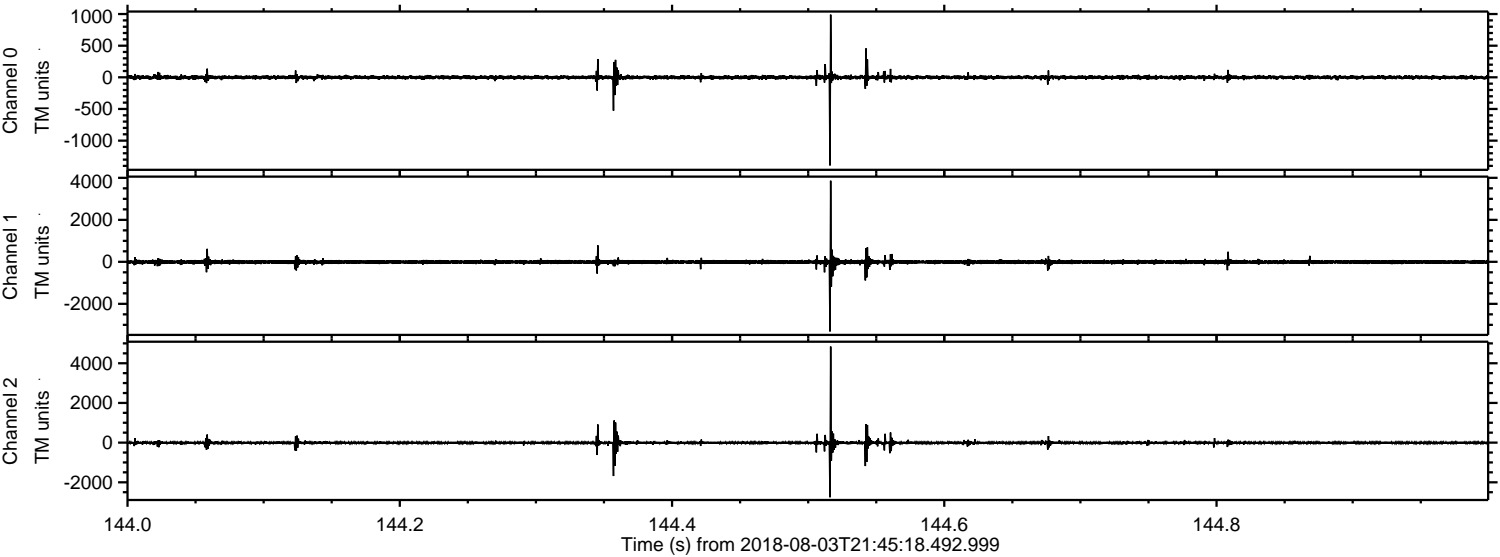


Processed Fri Aug 3 23:52:45 2018 by ELM ver.2012-10-06 from 001__elm20180803_214517__dat00.bin



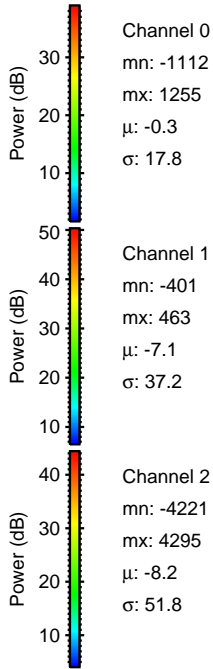
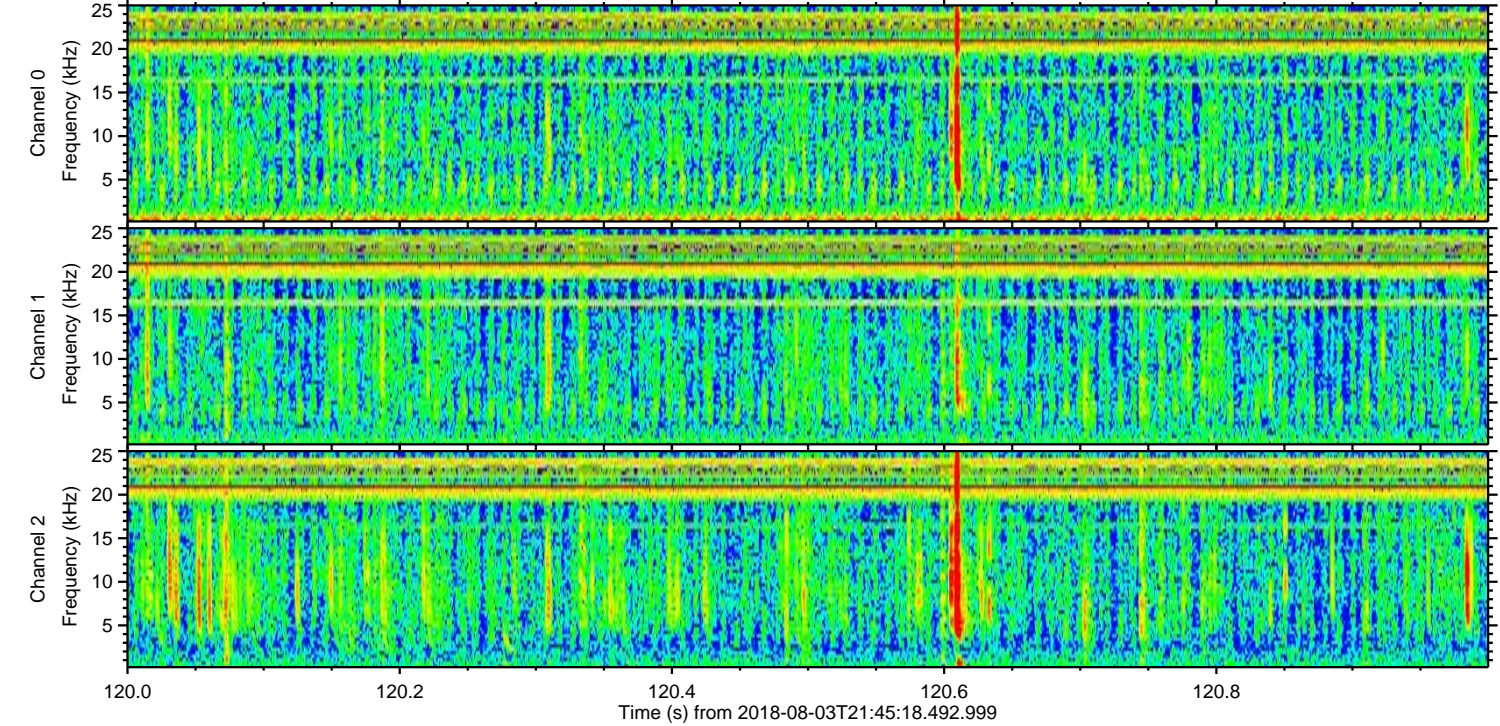
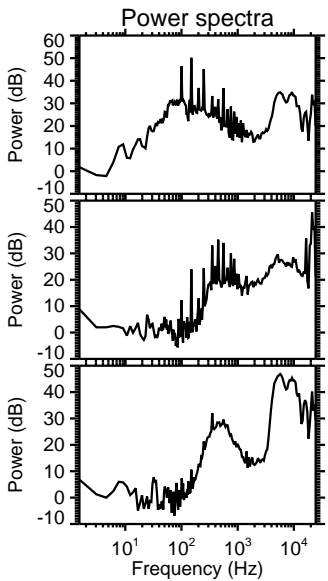
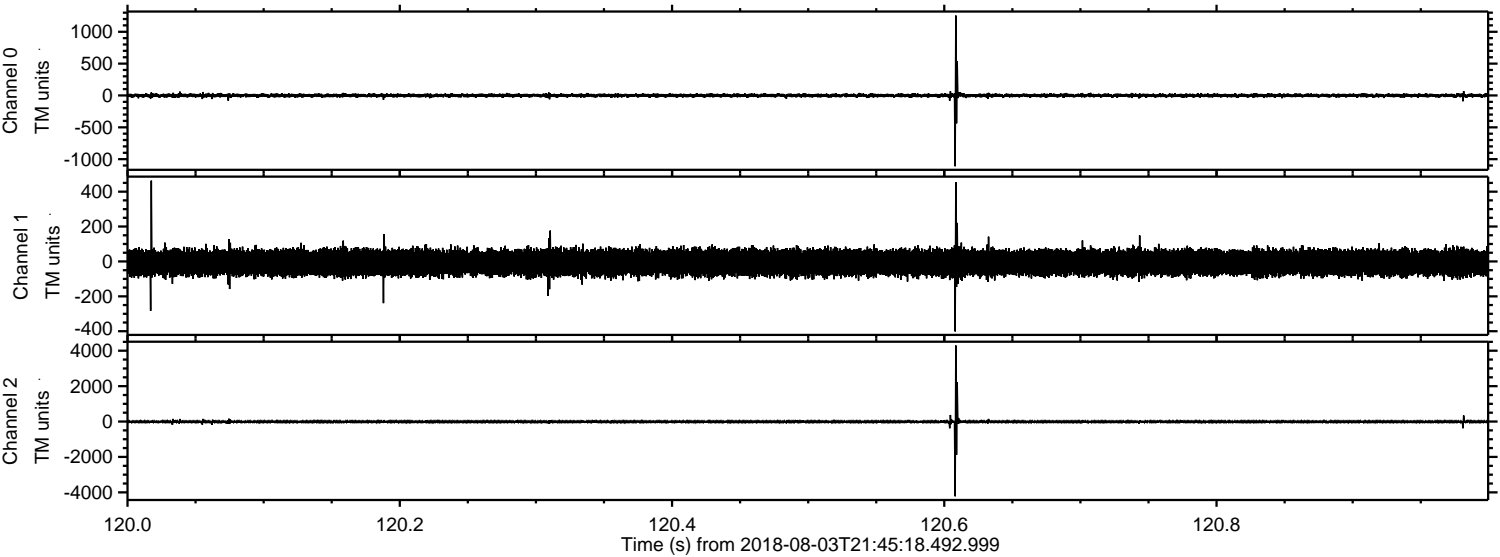
ELMAVAN 3D WAVEFORMS (Measured data sampled at 50 kHz) 50997 packets of 144 samples from 2018-08-03T21:45:18.492.999. Part 145/147

Processed Fri Aug 3 23:52:45 2018 by ELM ver.2012-10-06 from 001__elm20180803_214517__dat00.bin



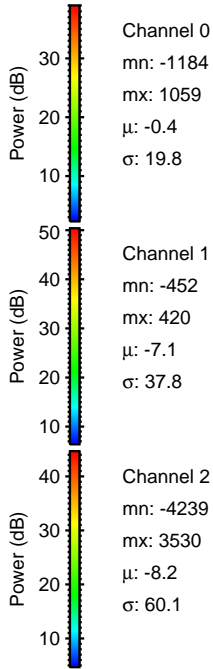
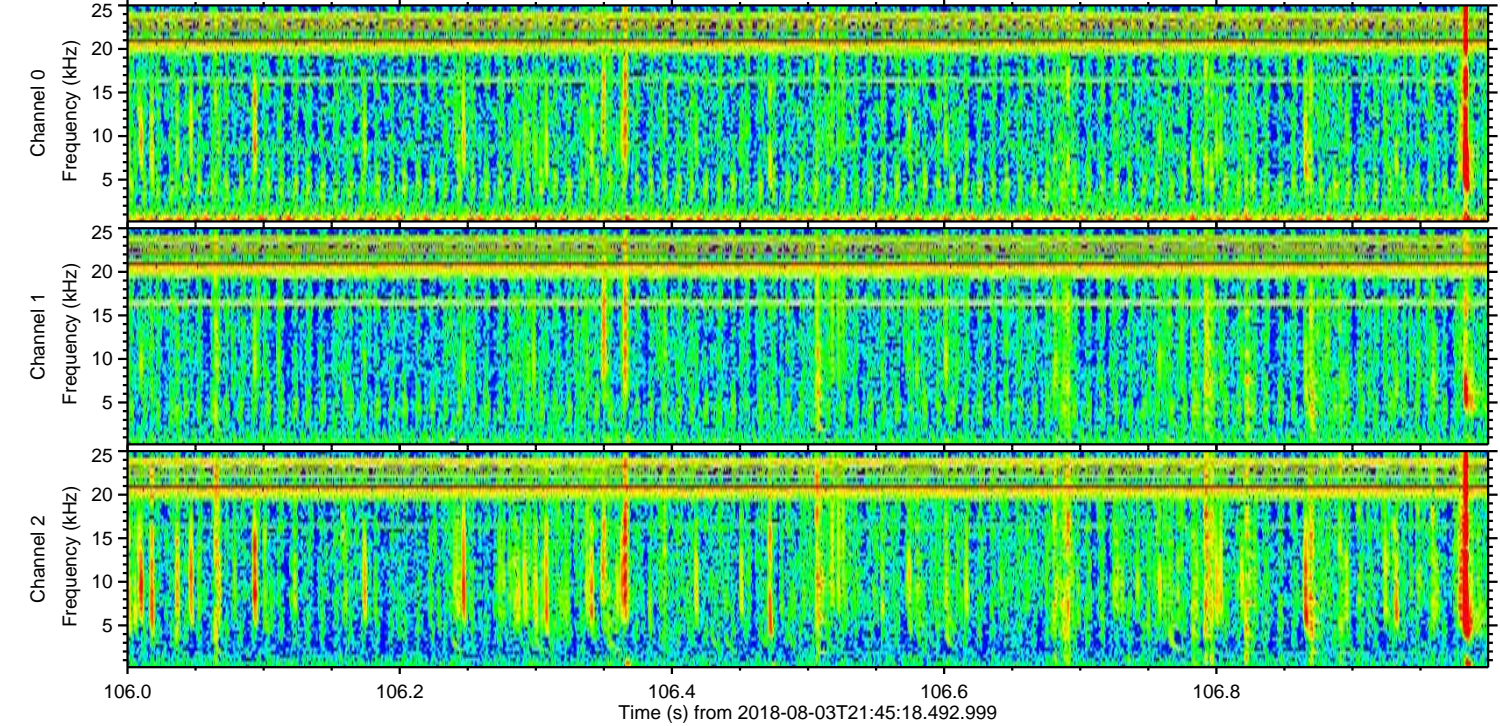
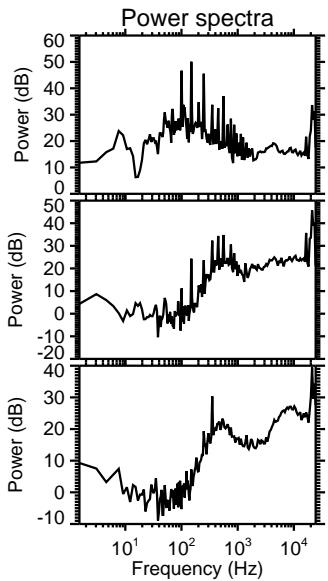
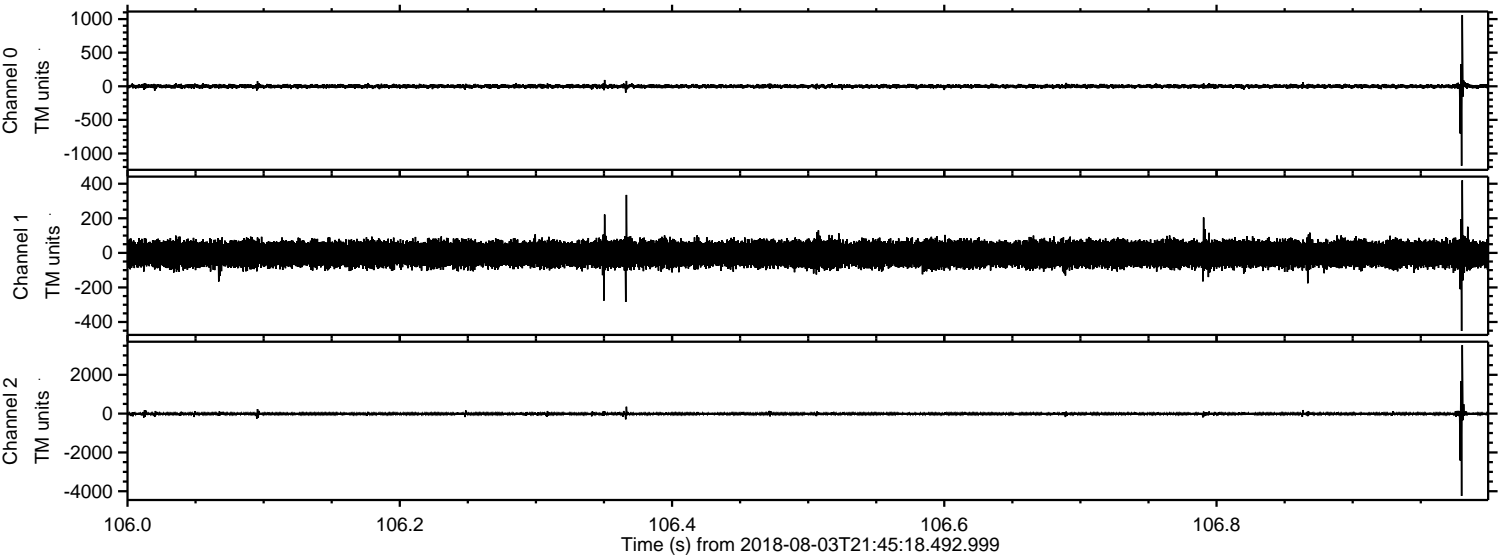
ELMAVAN 3D WAVEFORMS (Measured data sampled at 50 kHz) 50997 packets of 144 samples from 2018-08-03T21:45:18.492.999. Part 121/147

Processed Fri Aug 3 23:52:46 2018 by ELM ver.2012-10-06 from 001__elm20180803_214517__dat00.bin



ELMAVAN 3D WAVEFORMS (Measured data sampled at 50 kHz) 50997 packets of 144 samples from 2018-08-03T21:45:18.492.999. Part 107/147

Processed Fri Aug 3 23:52:47 2018 by ELM ver.2012-10-06 from 001__elm20180803_214517__dat00.bin



Channel 0
mn: -1184
mx: 1059
 μ : -0.4
 σ : 19.8

Channel 1
mn: -452
mx: 420
 μ : -7.1
 σ : 37.8

Channel 2
mn: -4239
mx: 3530
 μ : -8.2
 σ : 60.1

Processed Fri Aug 3 23:52:48 2018 by ELM ver.2012-10-06 from 001__elm20180803_214517__dat00.bin

