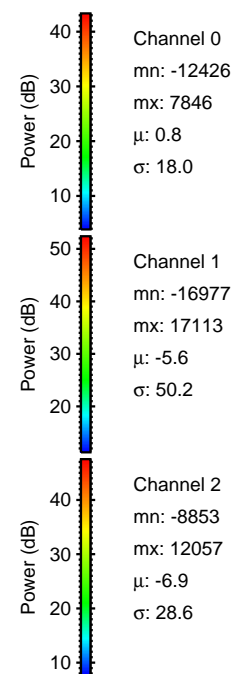
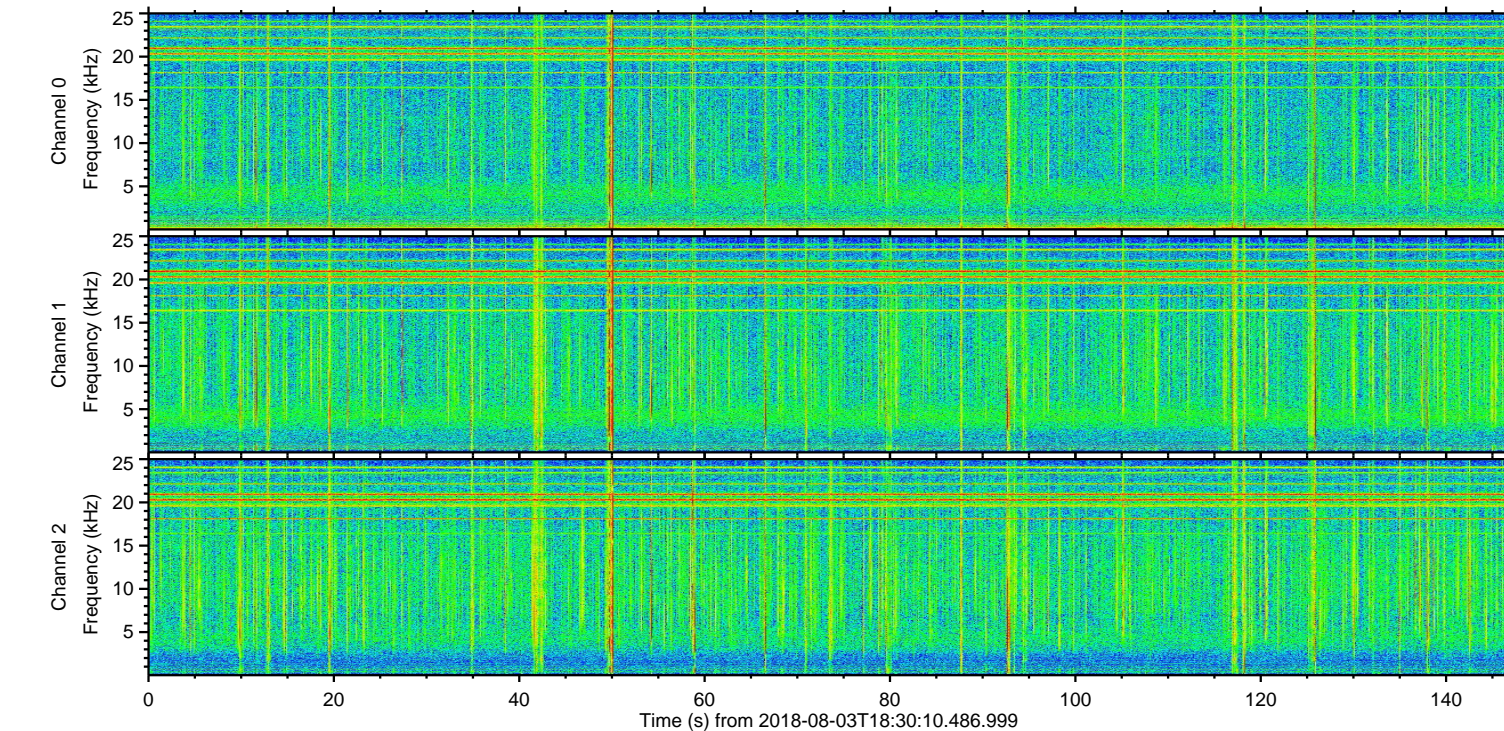
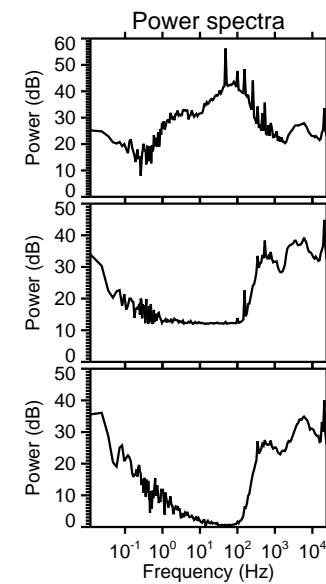
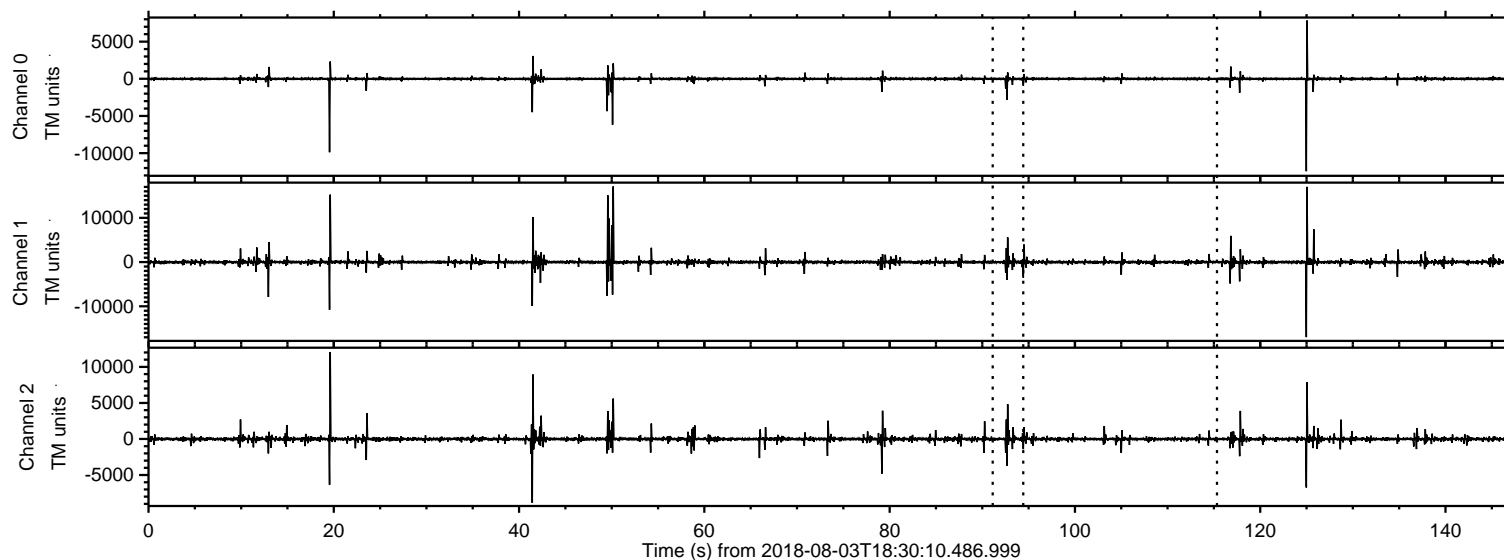
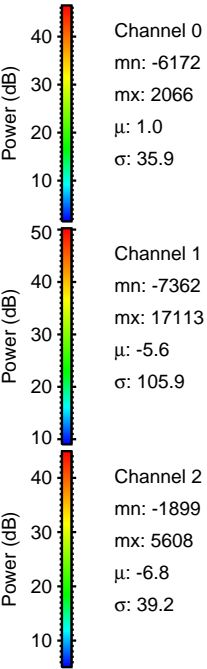
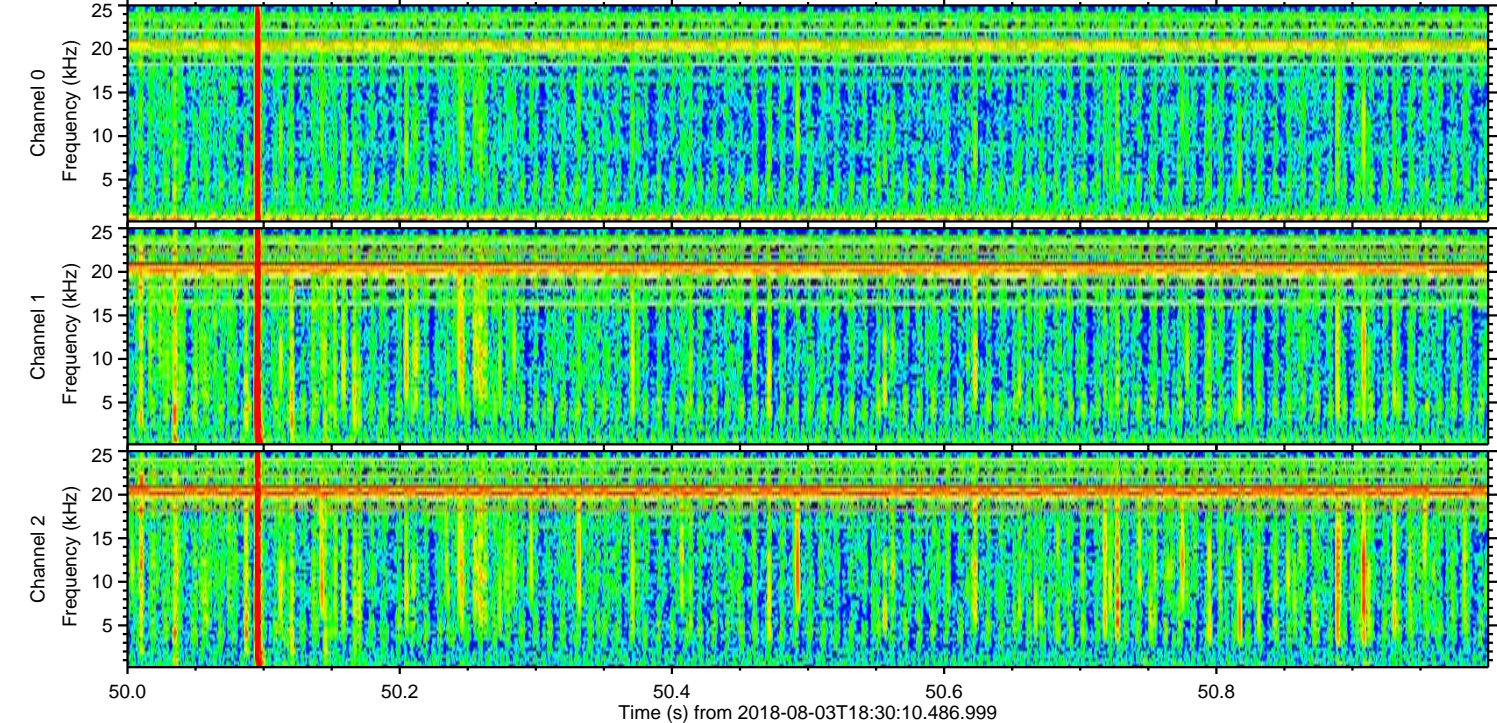
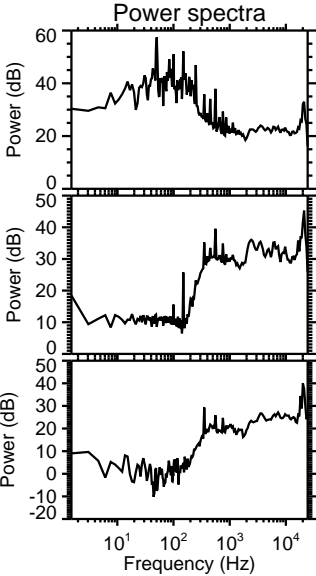
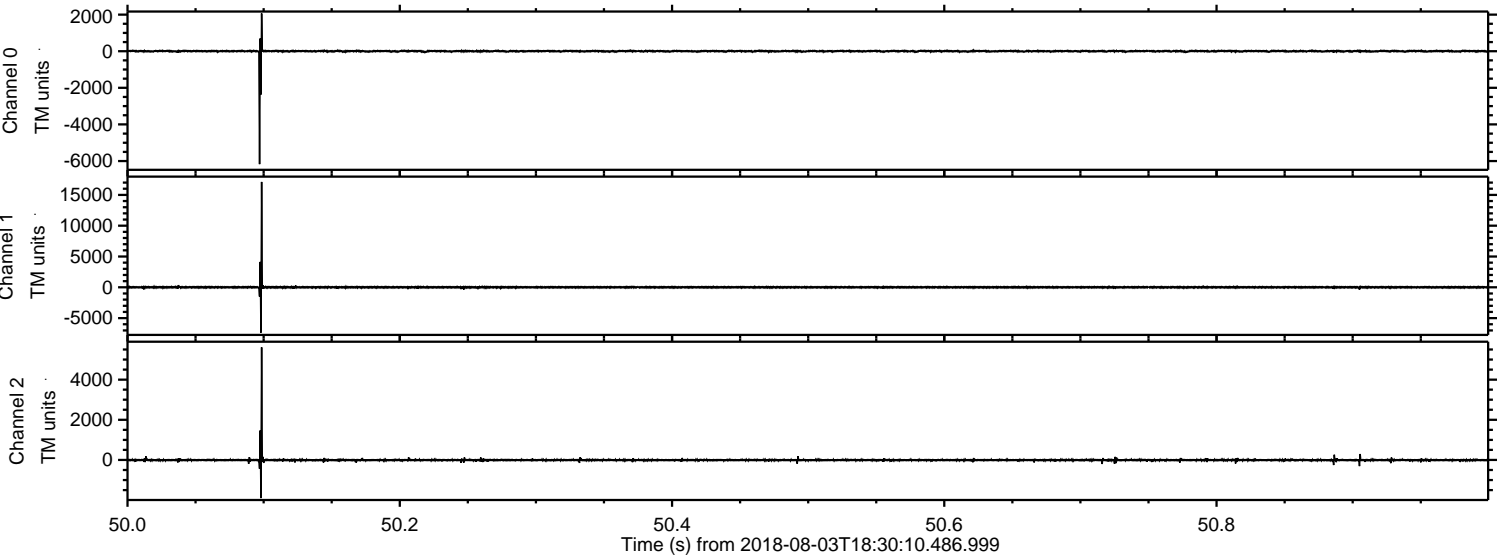


ELMAVAN 3D WAVEFORMS (Measured data sampled at 50 kHz) 50997 packets of 144 samples from 2018-08-03T18:30:10.486.999.

Processed Fri Aug 3 20:38:02 2018 by ELM ver.2012-10-06 from 001__elm20180803_183009__dat00.bin

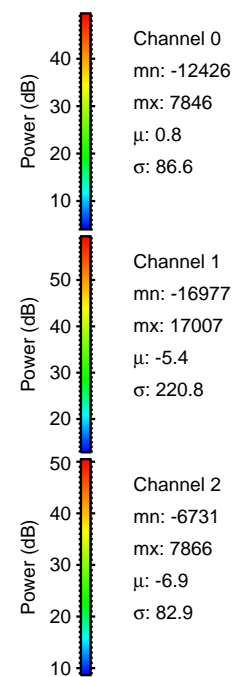
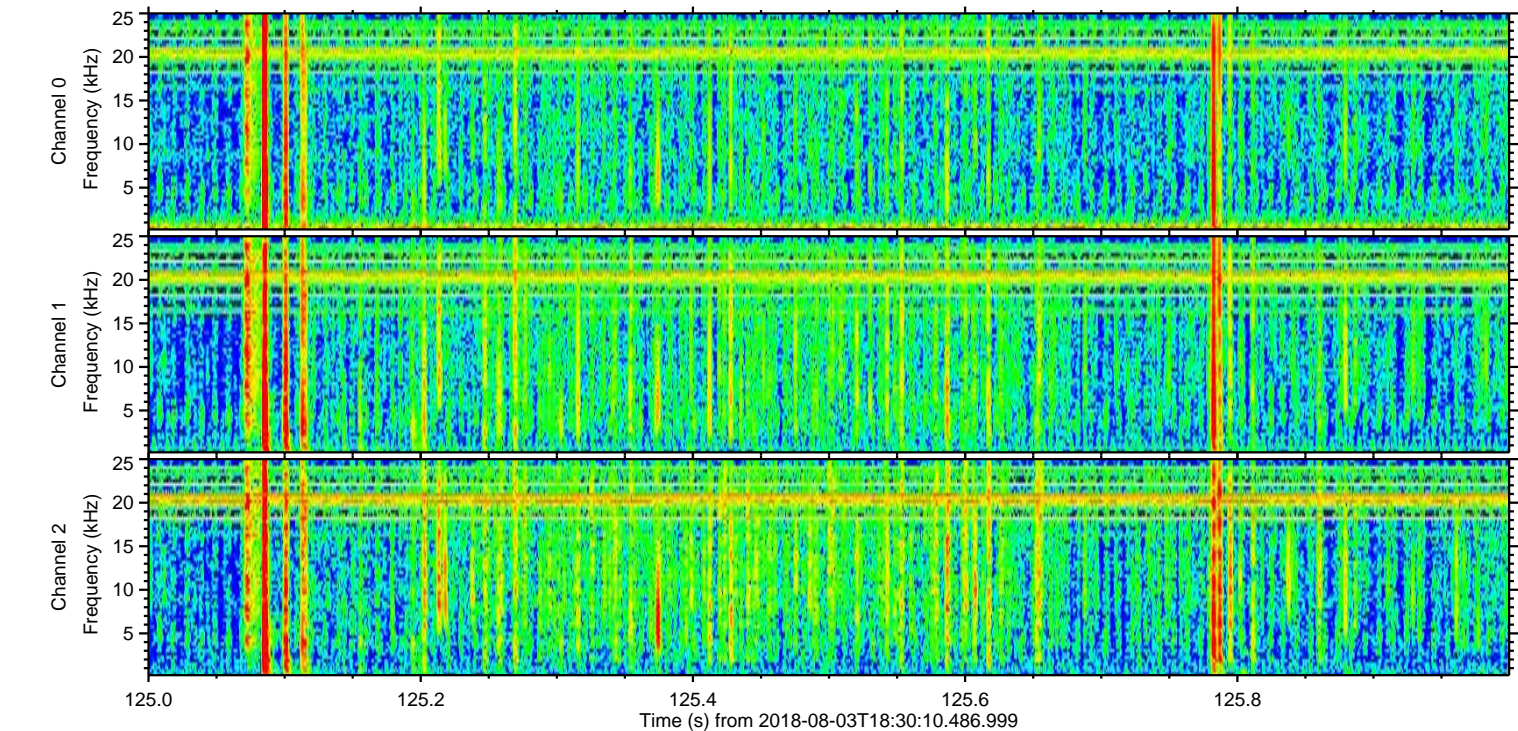
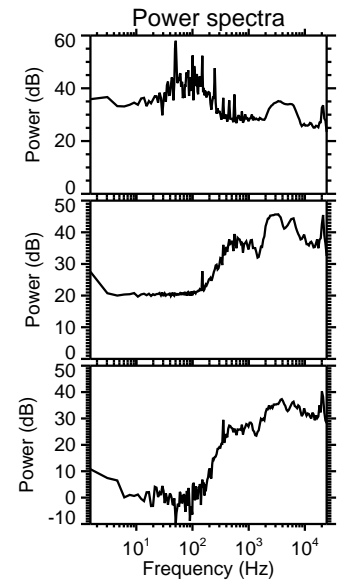
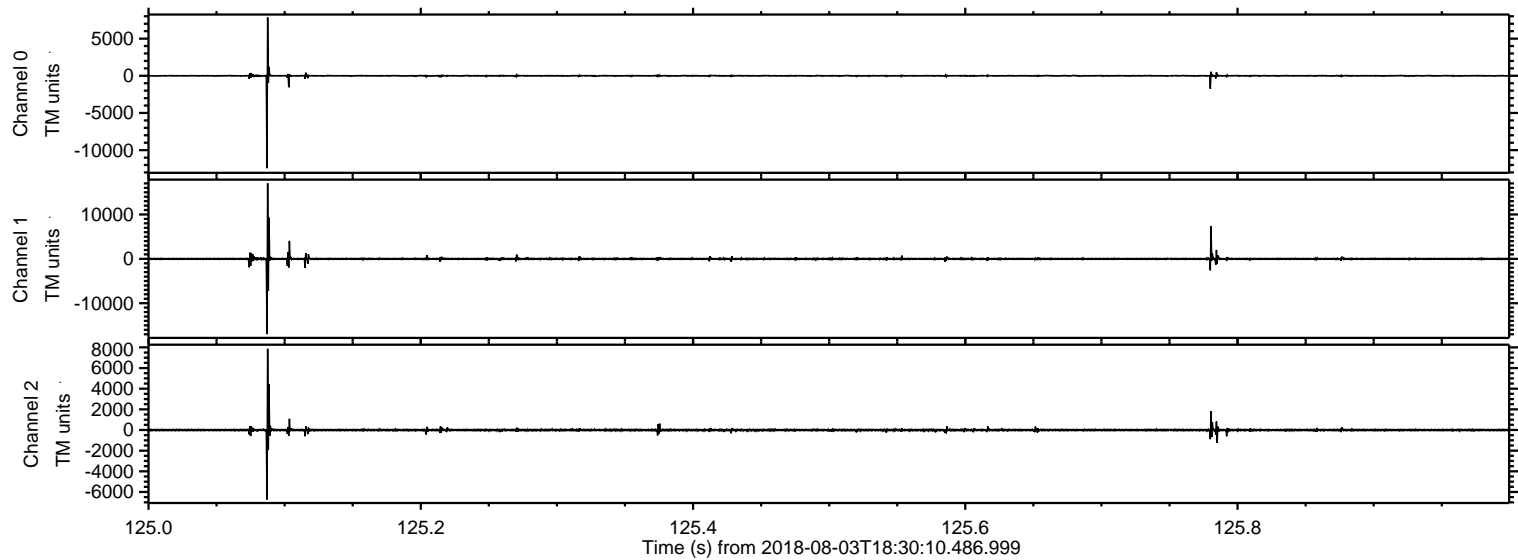


Processed Fri Aug 3 20:38:08 2018 by ELM ver.2012-10-06 from 001__elm20180803_183009__dat00.bin

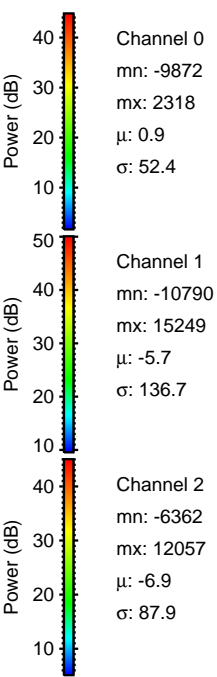
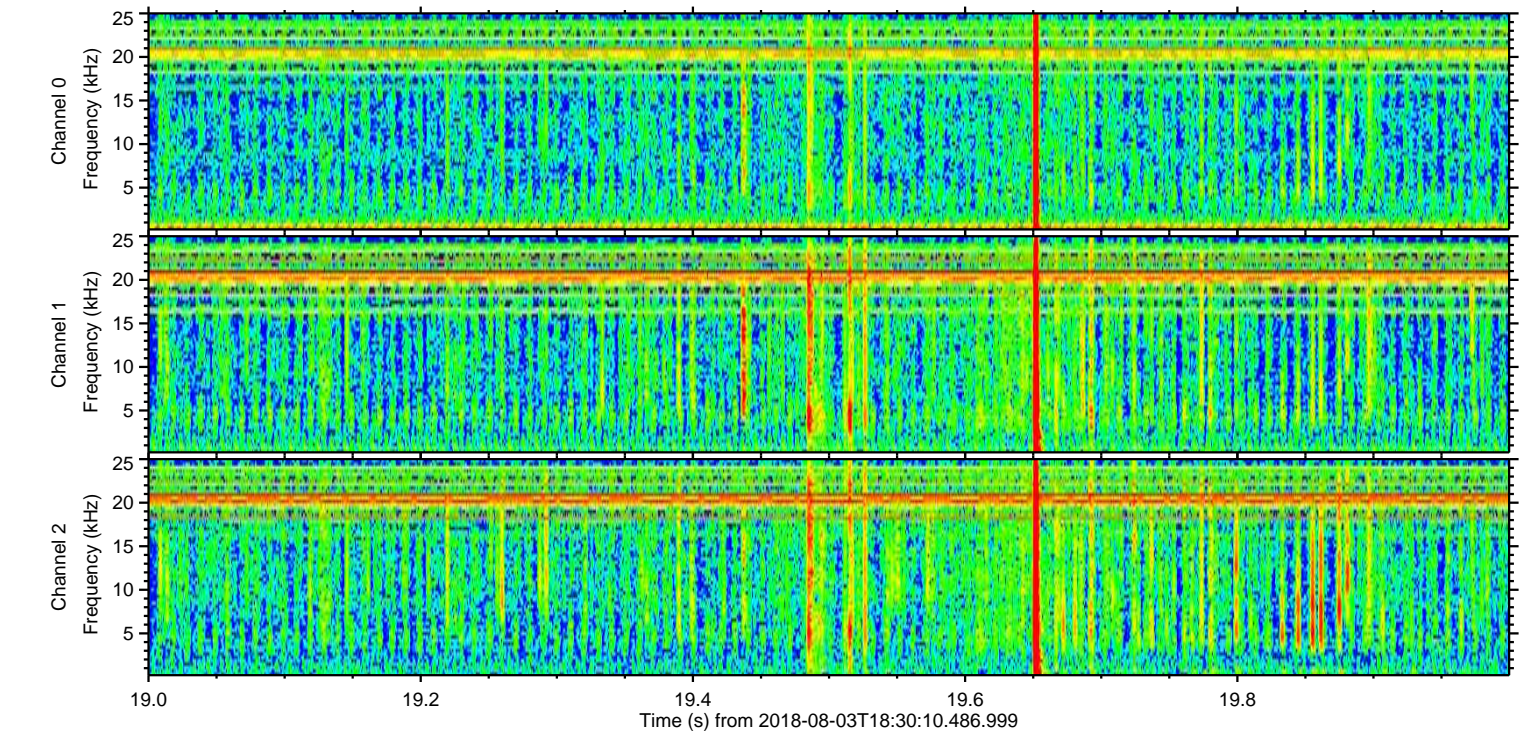
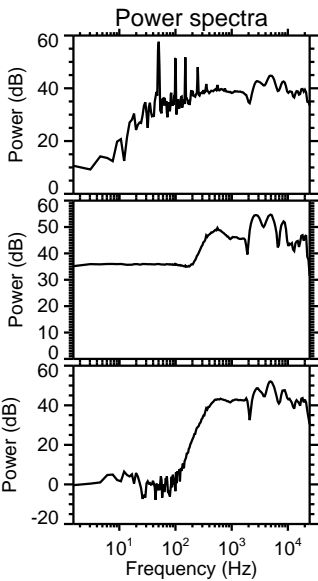
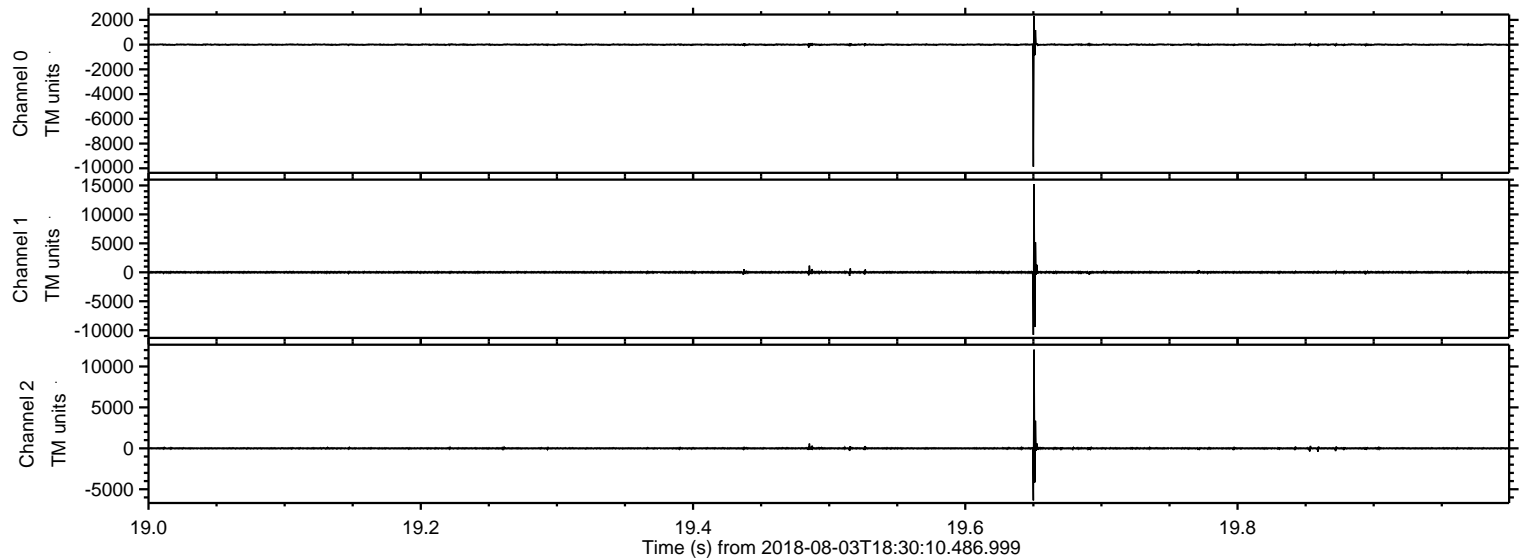


ELMAVAN 3D WAVEFORMS (Measured data sampled at 50 kHz) 50997 packets of 144 samples from 2018-08-03T18:30:10.486.999. Part 126/147

Processed Fri Aug 3 20:38:08 2018 by ELM ver.2012-10-06 from 001__elm20180803_183009__dat00.bin

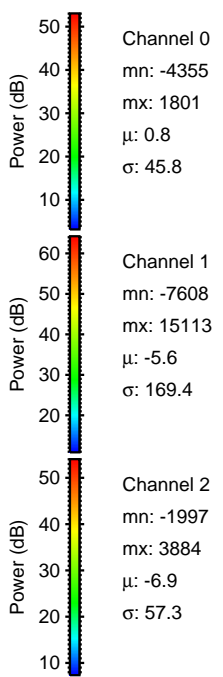
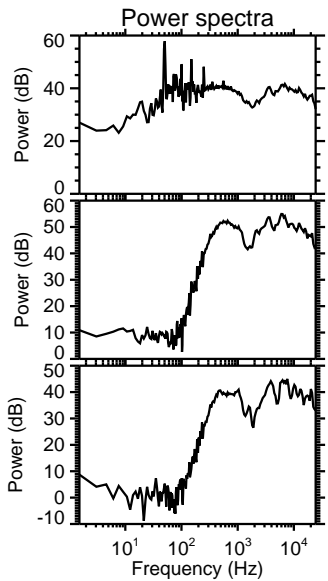
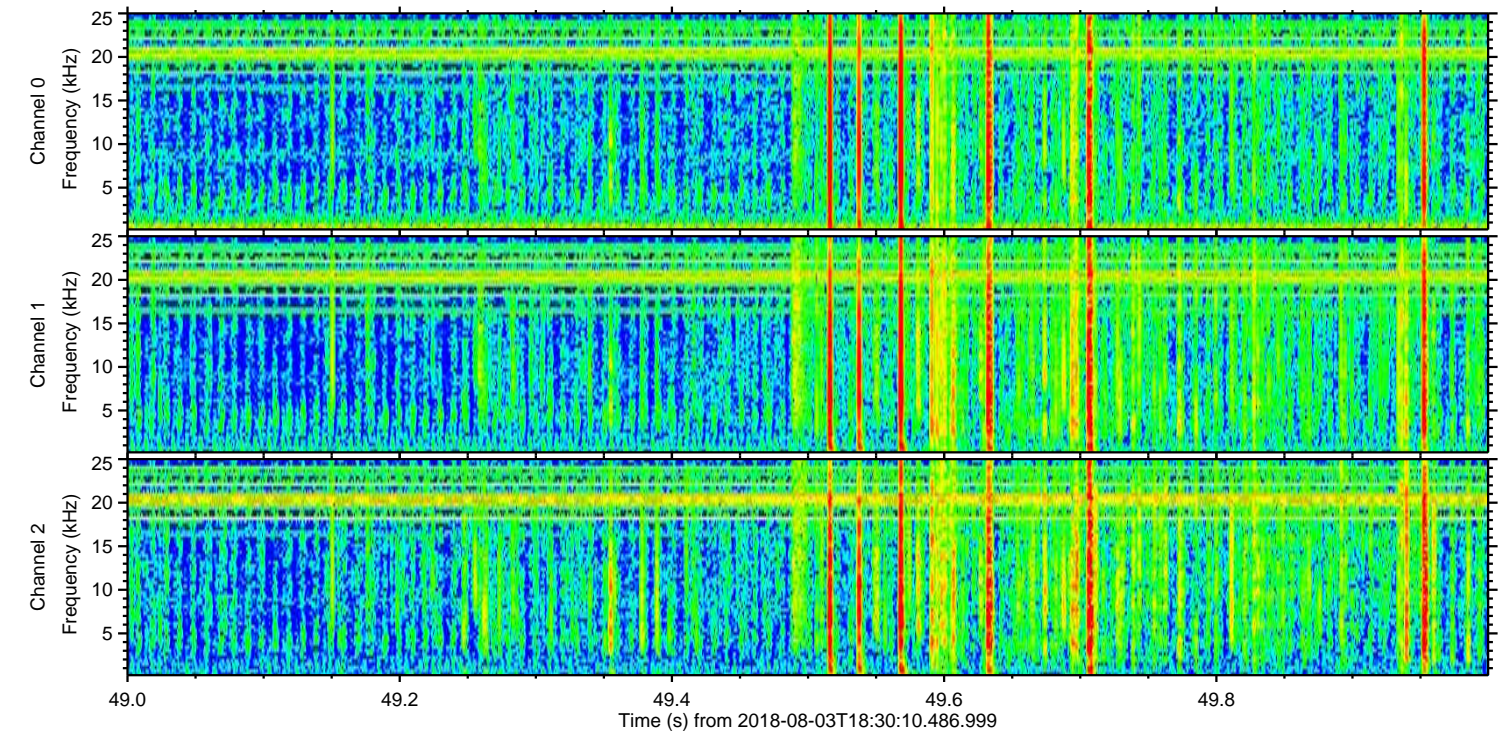
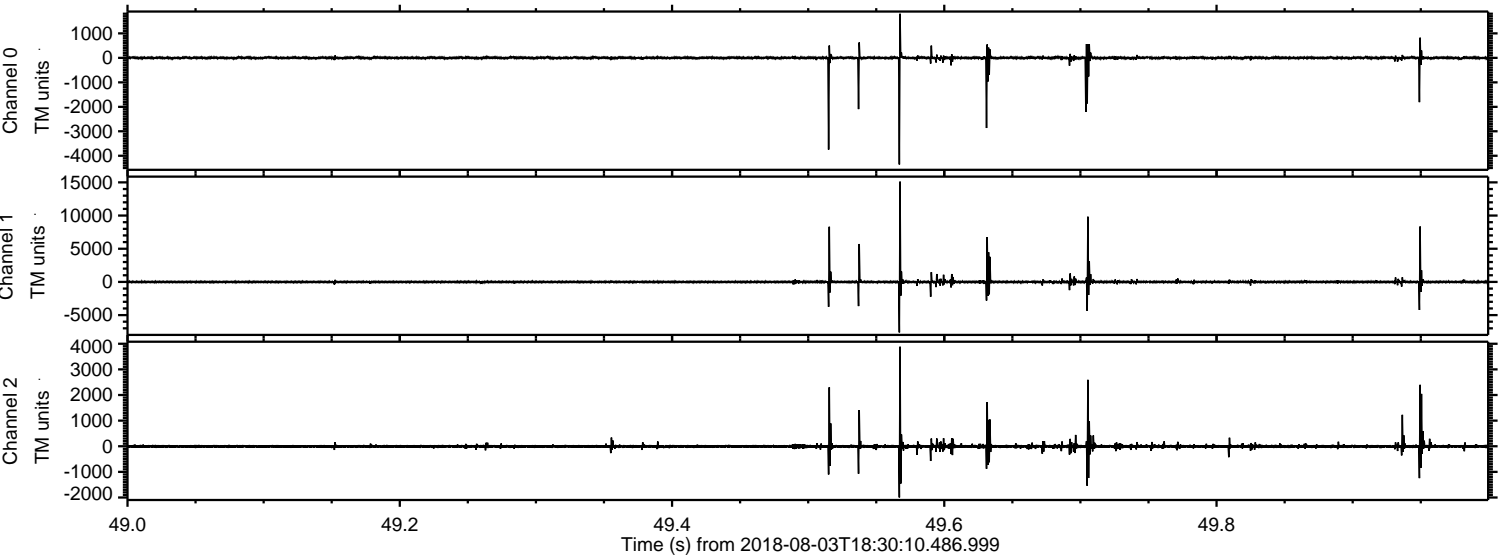


Processed Fri Aug 3 20:38:09 2018 by ELM ver.2012-10-06 from 001__elm20180803_183009__dat00.bin

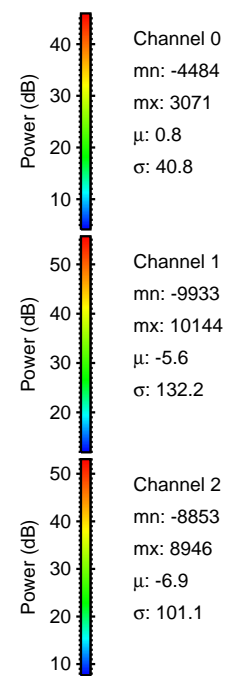
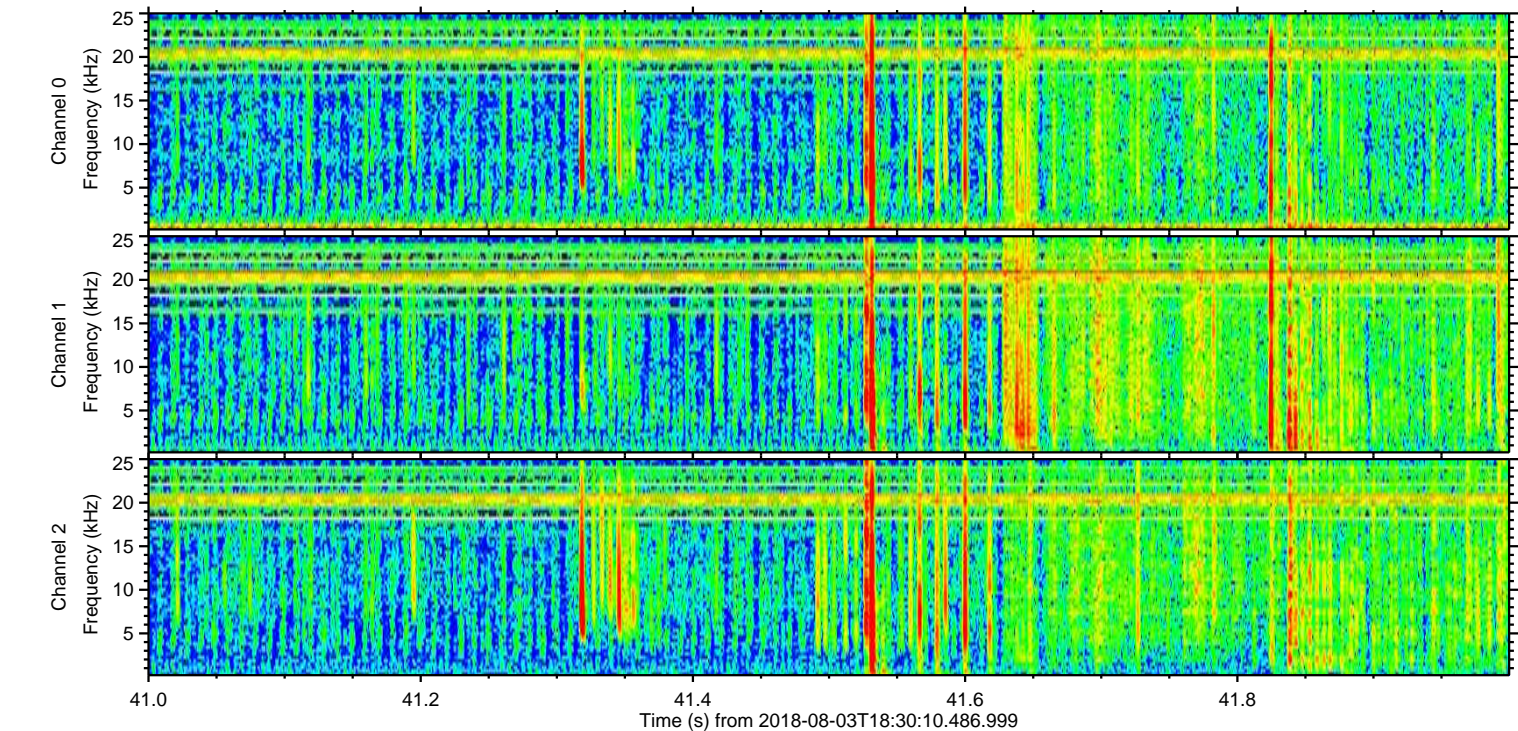
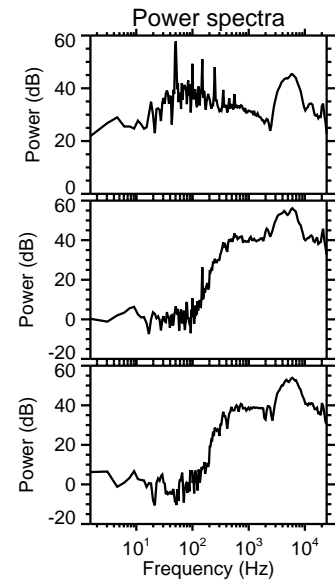
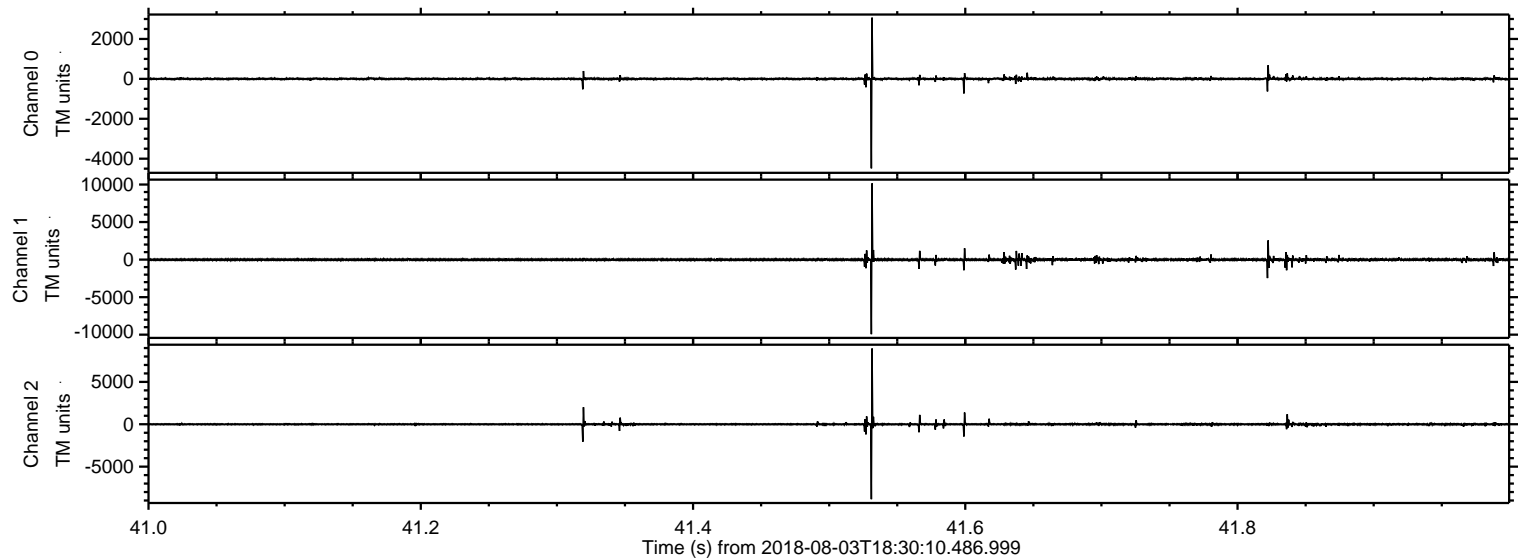


ELMAVAN 3D WAVEFORMS (Measured data sampled at 50 kHz) 50997 packets of 144 samples from 2018-08-03T18:30:10.486.999. Part 50/147

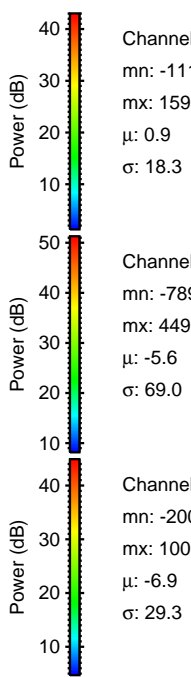
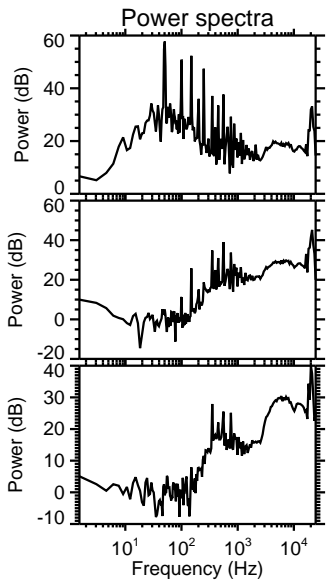
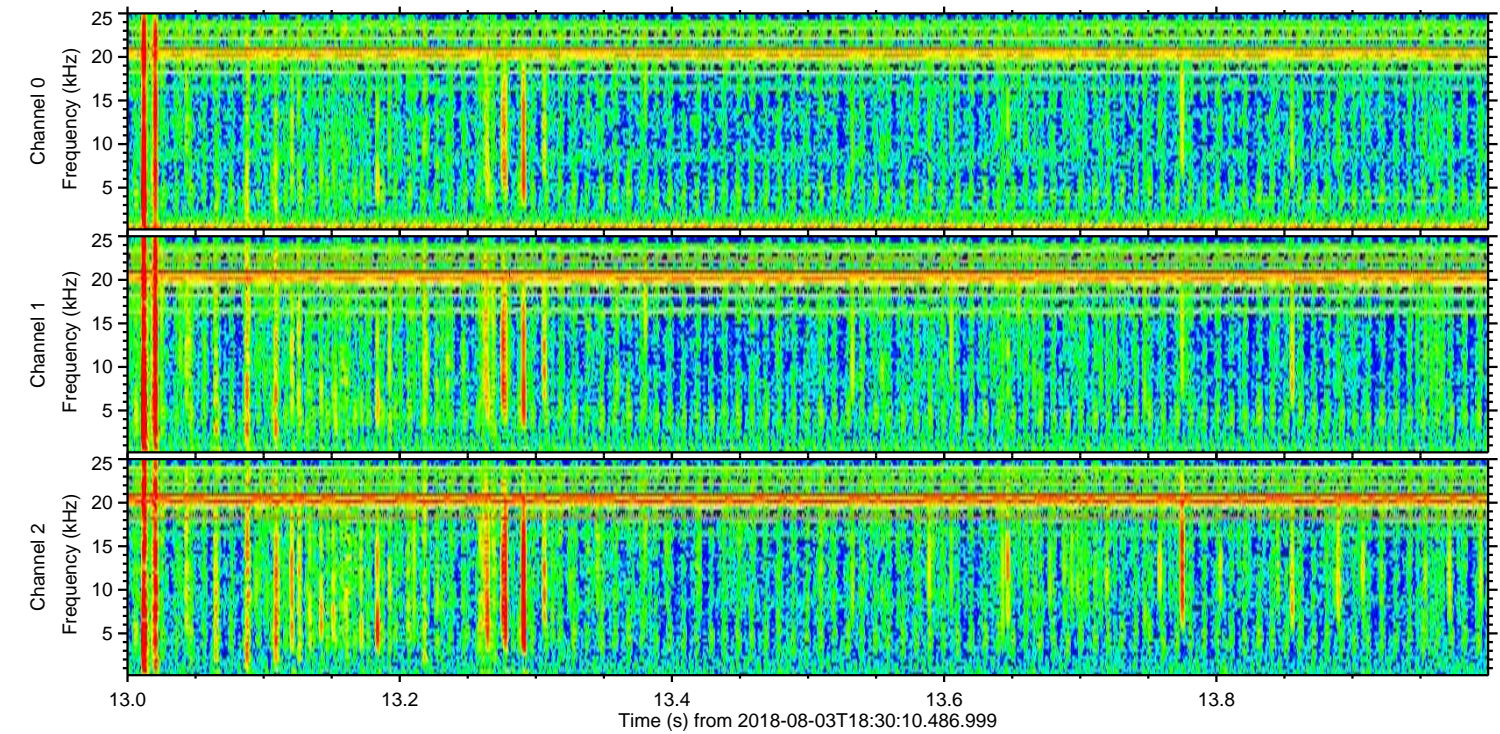
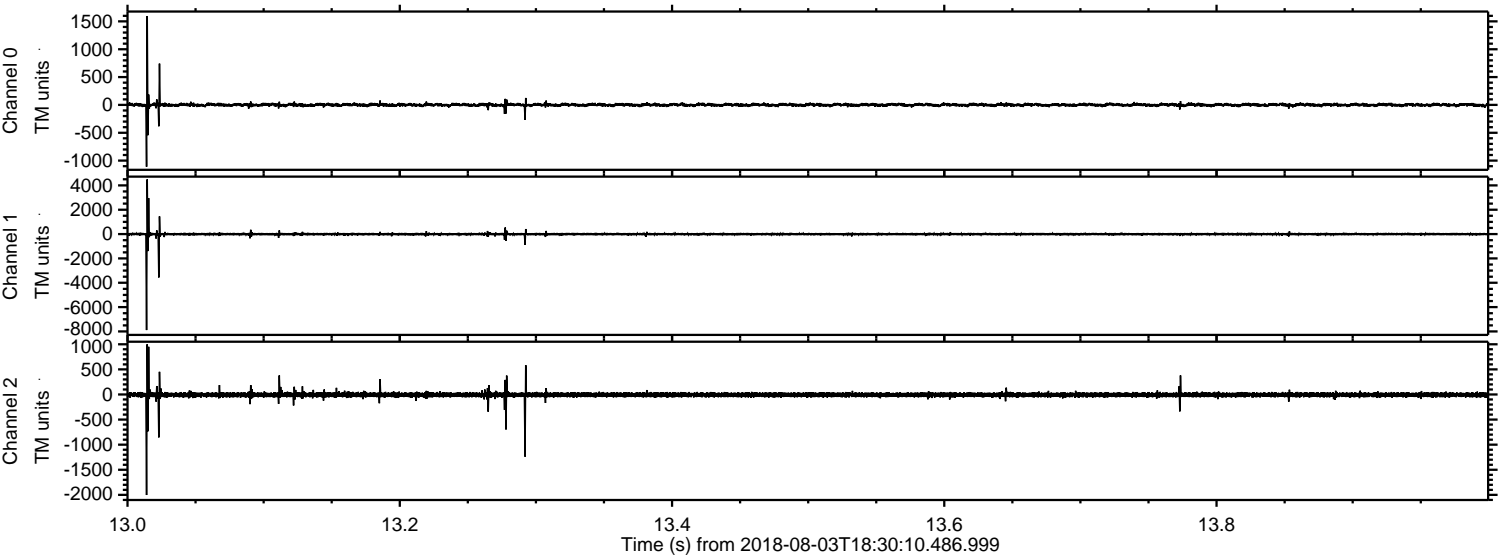
Processed Fri Aug 3 20:38:10 2018 by ELM ver.2012-10-06 from 001__elm20180803_183009__dat00.bin



Processed Fri Aug 3 20:38:10 2018 by ELM ver.2012-10-06 from 001__elm20180803_183009__dat00.bin



Processed Fri Aug 3 20:38:11 2018 by ELM ver.2012-10-06 from 001__elm20180803_183009__dat00.bin



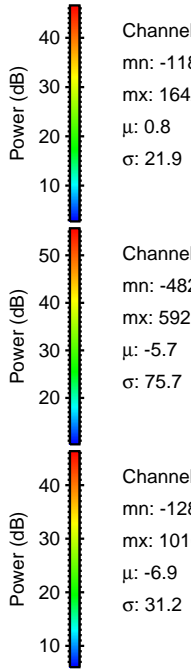
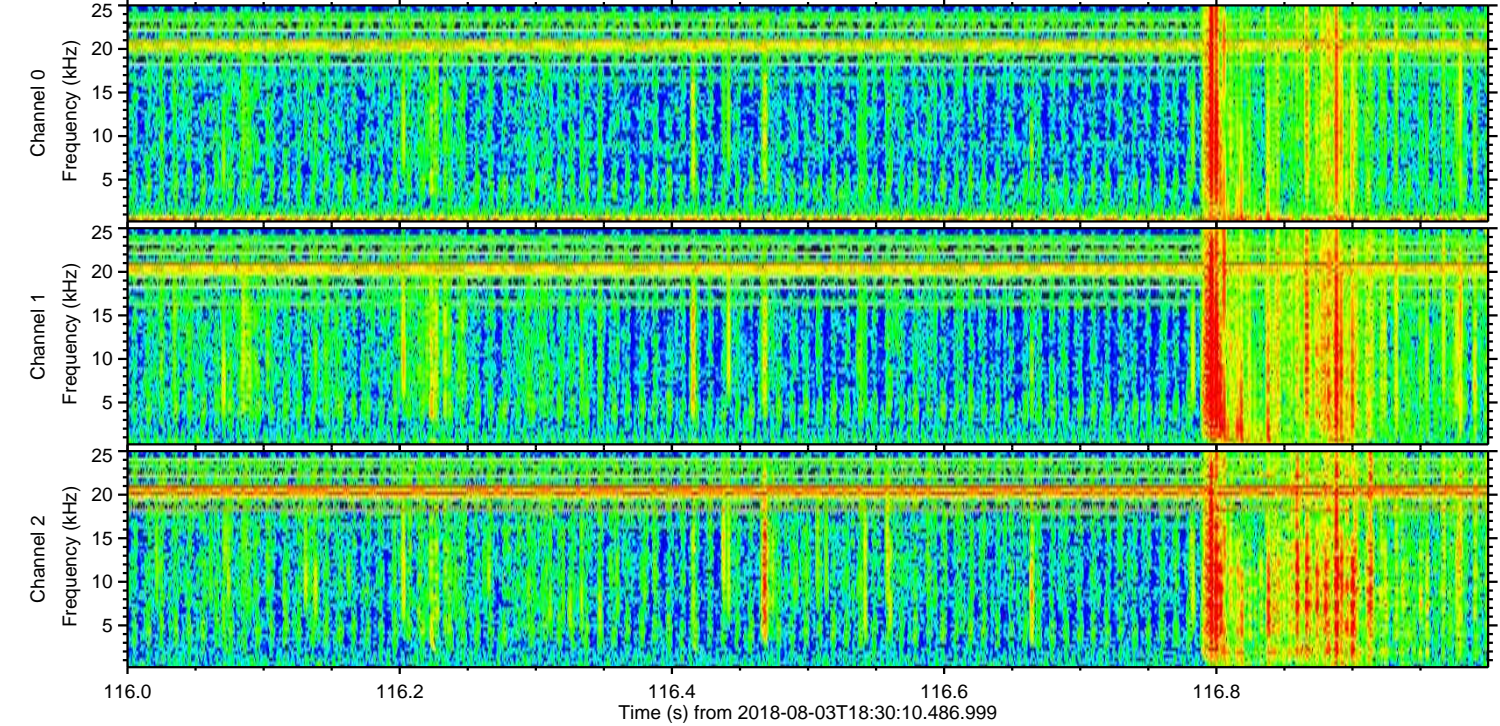
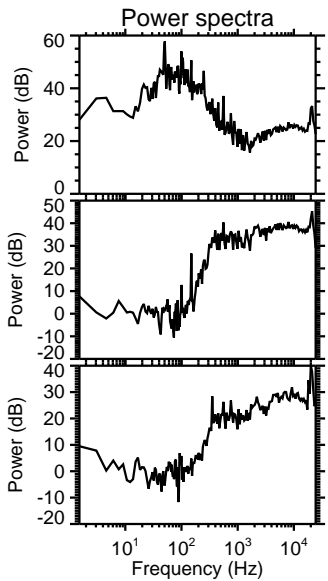
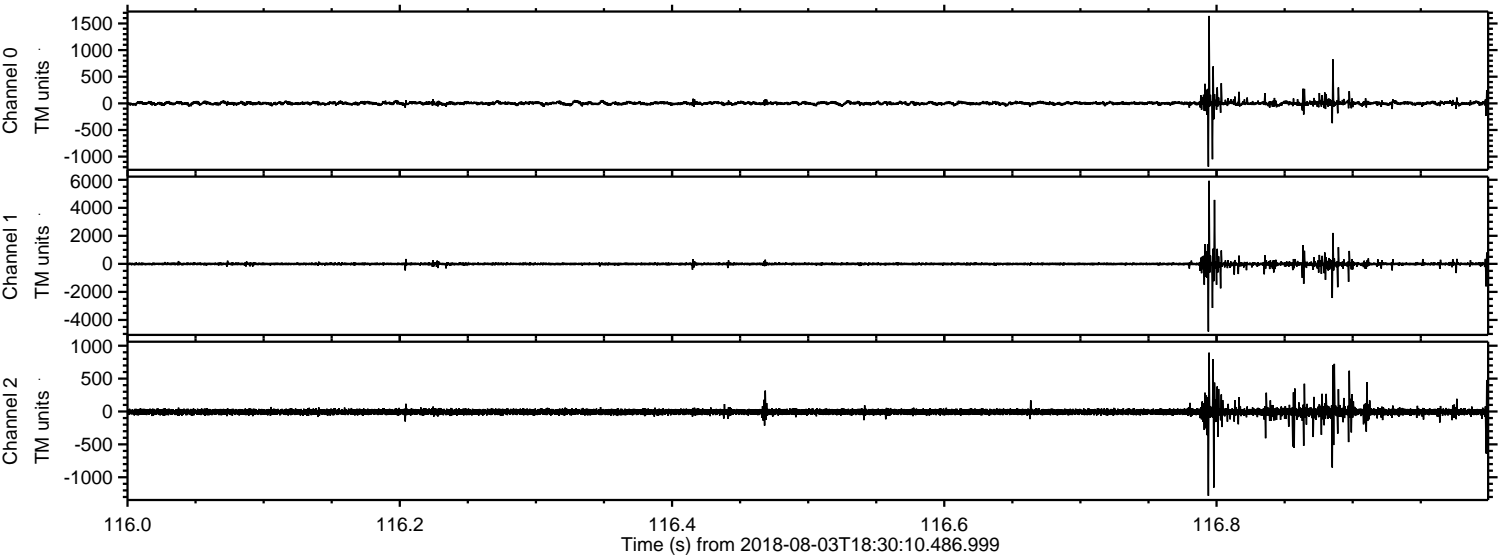
Channel 0
mn: -1110
mx: 1597
 μ : 0.9
 σ : 18.3

Channel 1
mn: -7890
mx: 4495
 μ : -5.6
 σ : 69.0

Channel 2
mn: -2002
mx: 1001
 μ : -6.9
 σ : 29.3

ELMAVAN 3D WAVEFORMS (Measured data sampled at 50 kHz) 50997 packets of 144 samples from 2018-08-03T18:30:10.486.999. Part 117/147

Processed Fri Aug 3 20:38:12 2018 by ELM ver.2012-10-06 from 001__elm20180803_183009__dat00.bin

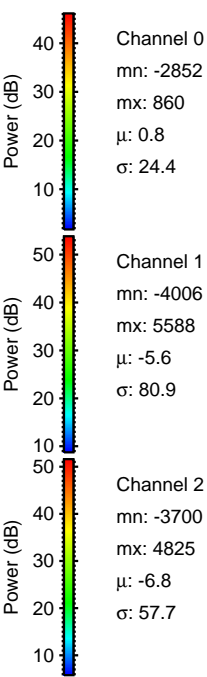
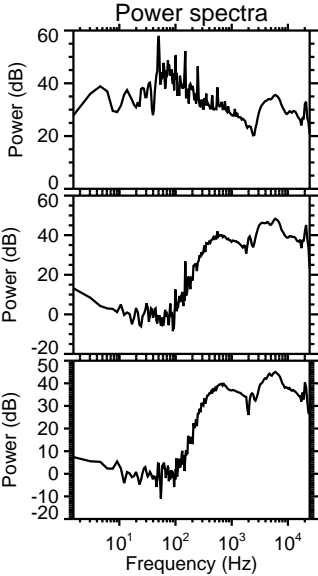
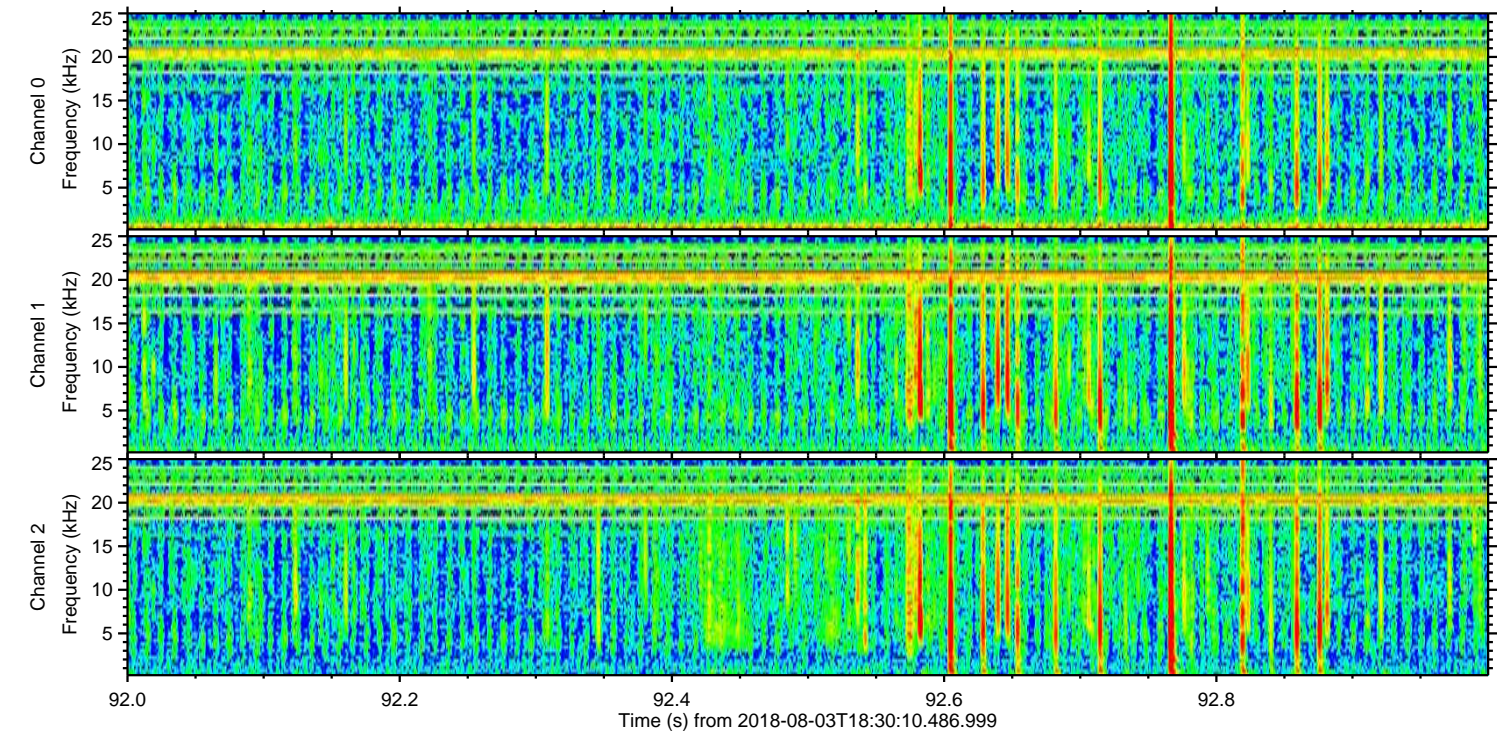
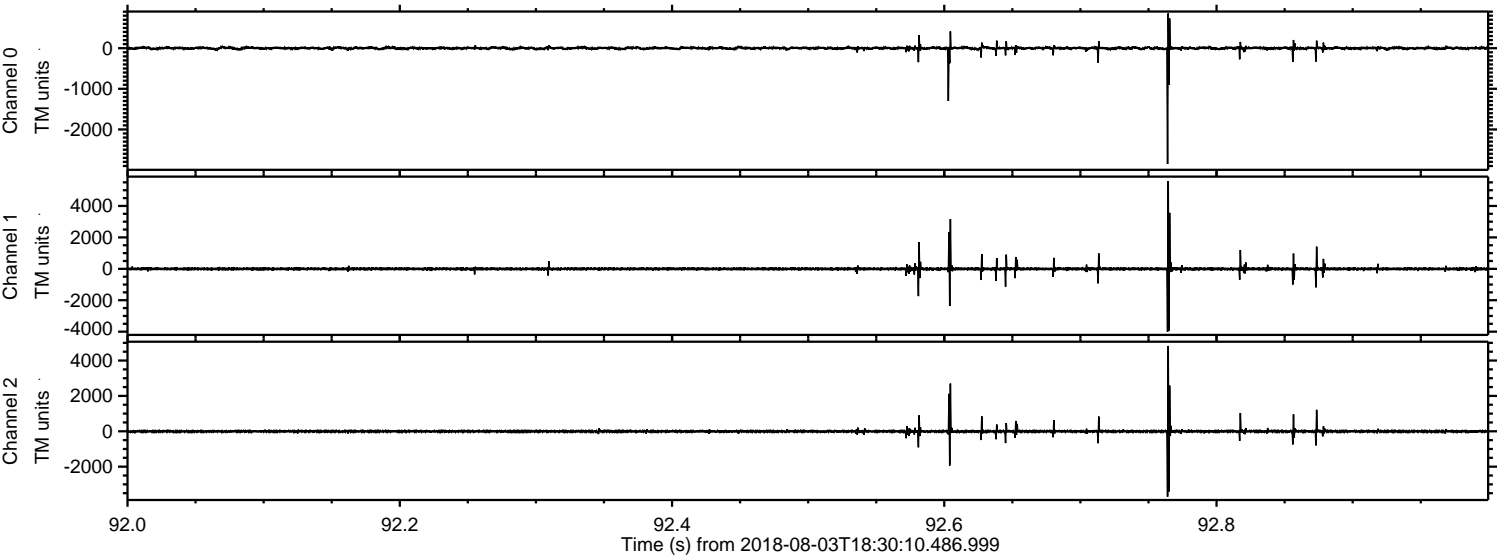


Channel 0
mn: -1189
mx: 1642
 μ : 0.8
 σ : 21.9

Channel 1
mn: -4828
mx: 5929
 μ : -5.7
 σ : 75.7

Channel 2
mn: -1282
mx: 1010
 μ : -6.9
 σ : 31.2

Processed Fri Aug 3 20:38:12 2018 by ELM ver.2012-10-06 from 001__elm20180803_183009__dat00.bin



Processed Fri Aug 3 20:38:13 2018 by ELM ver.2012-10-06 from 001__elm20180803_183009__dat00.bin

