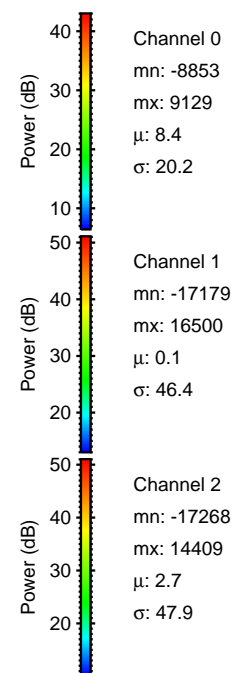
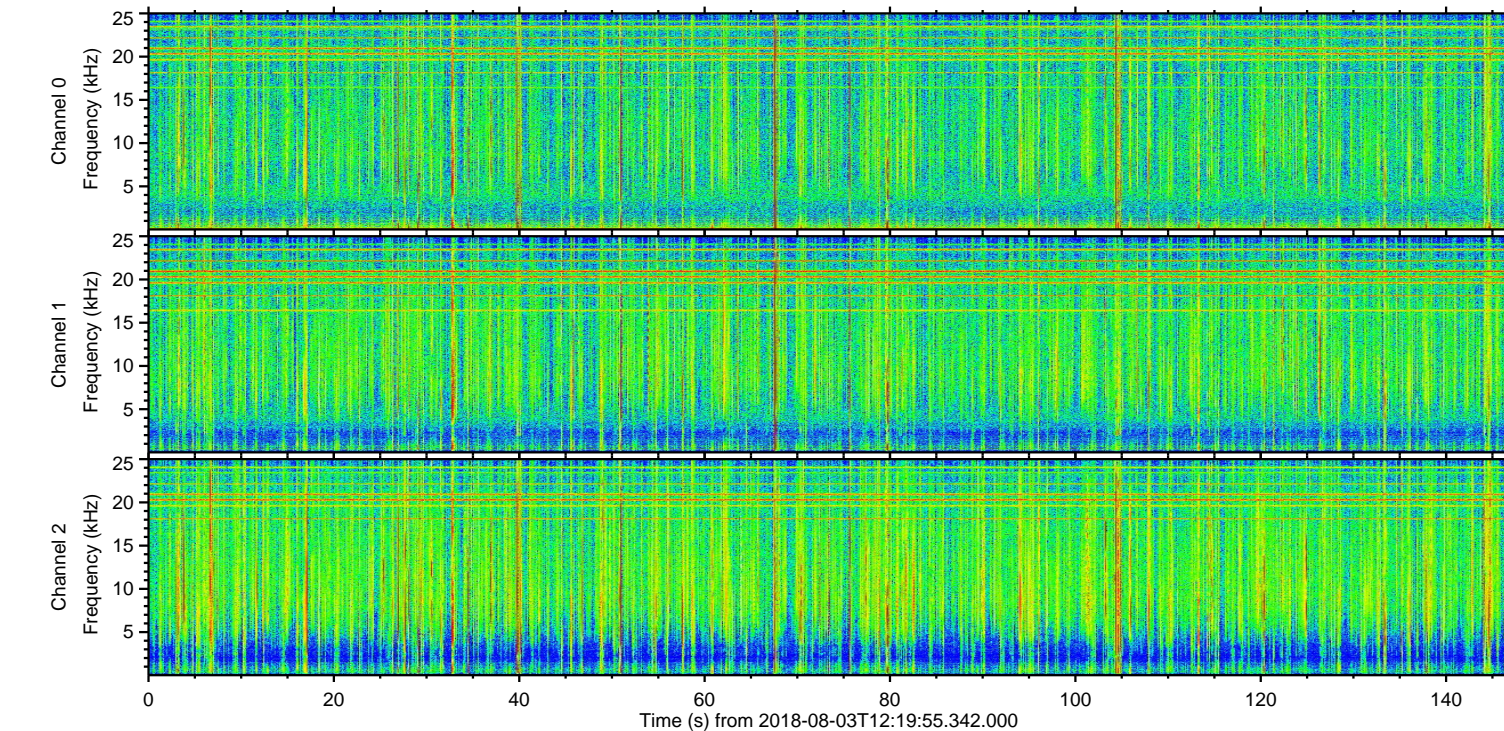
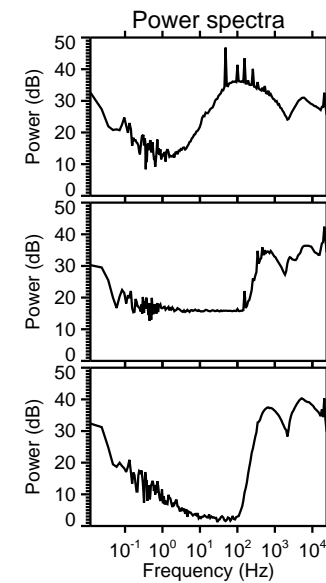
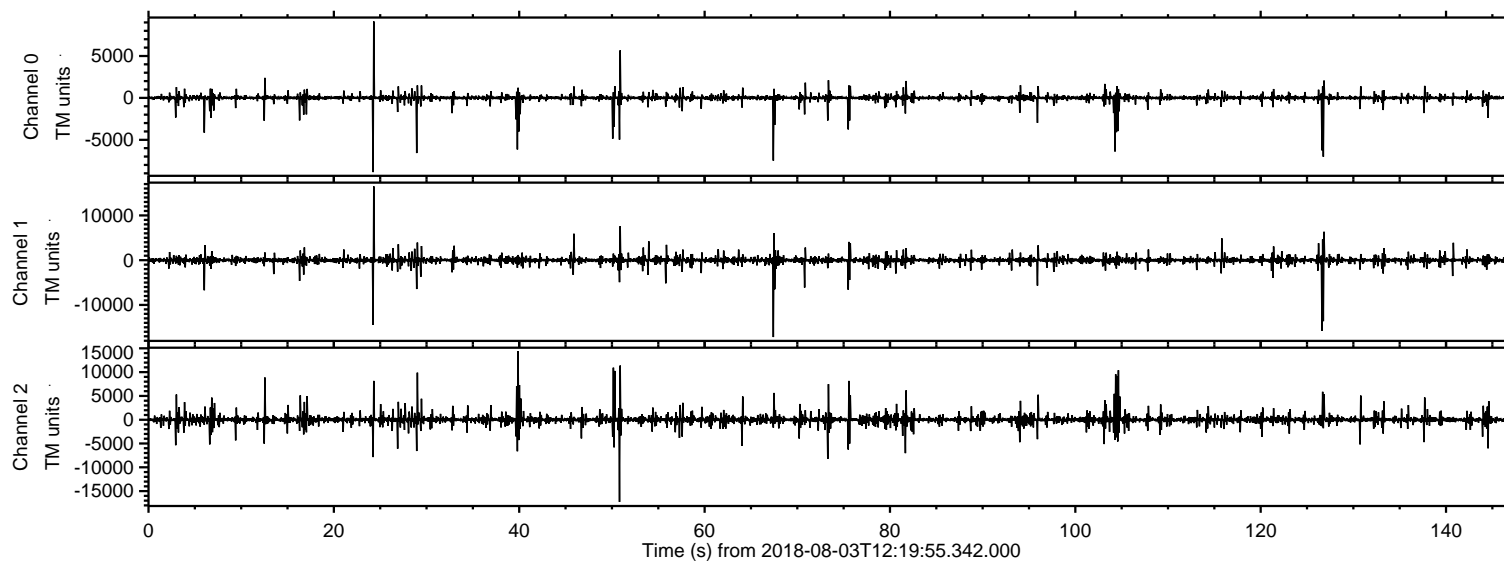
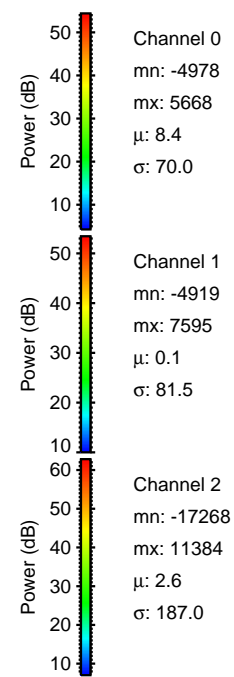
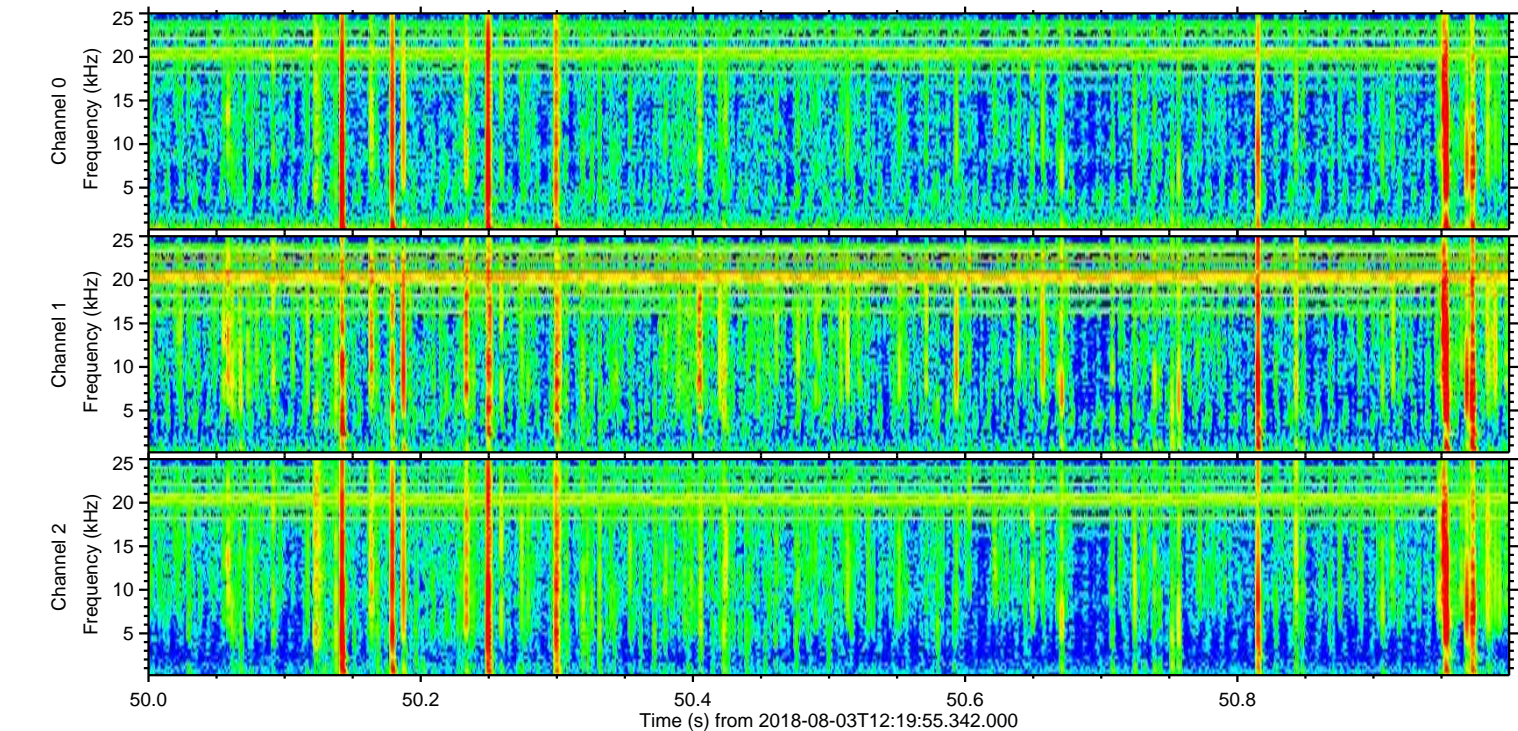
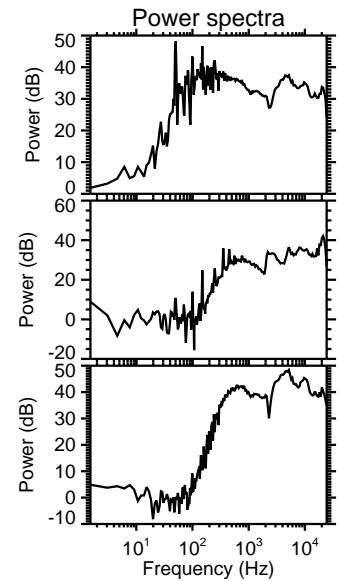
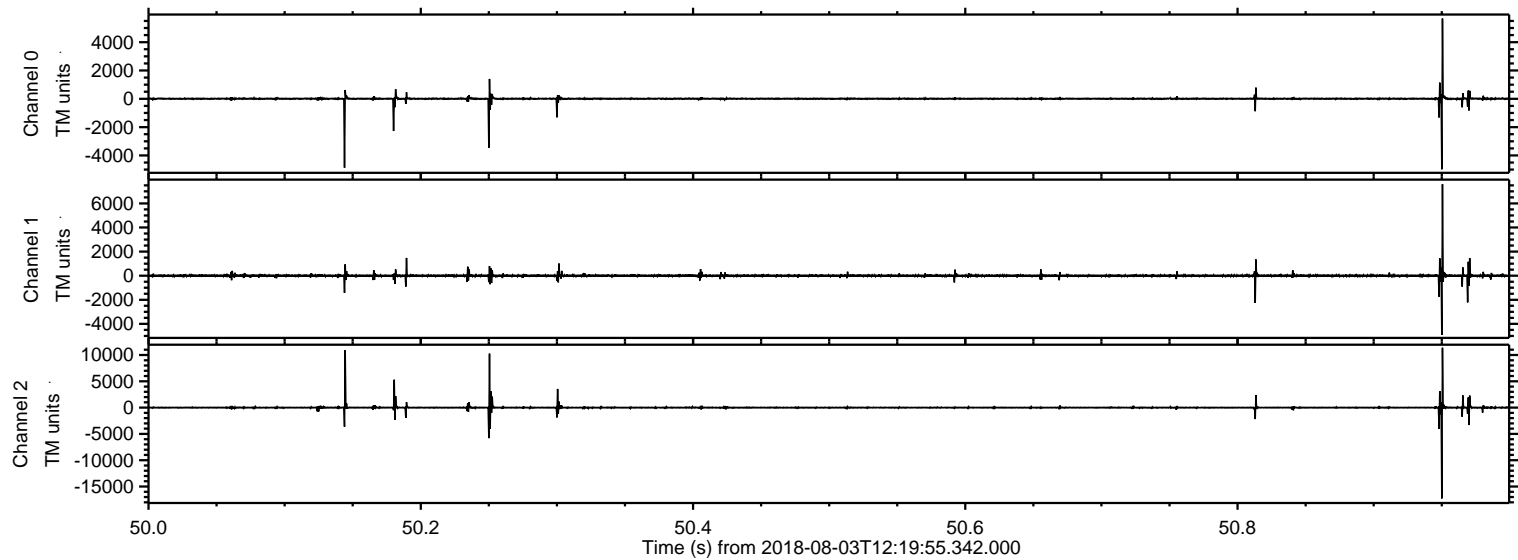


ELMAVAN 3D WAVEFORMS (Measured data sampled at 50 kHz) 51000 packets of 144 samples from 2018-08-03T12:19:55.342.000.

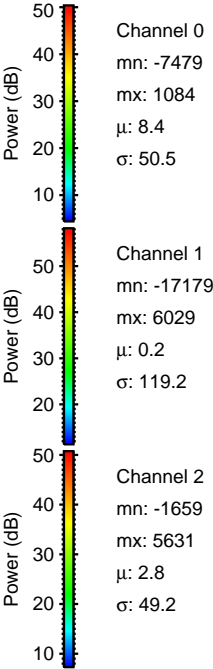
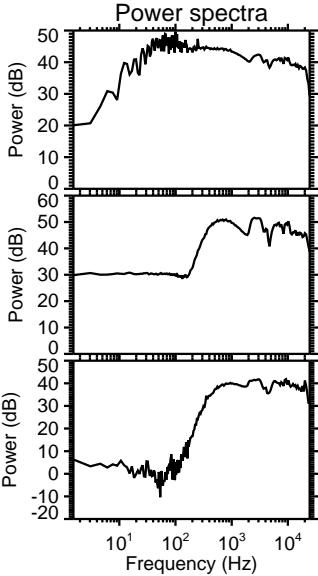
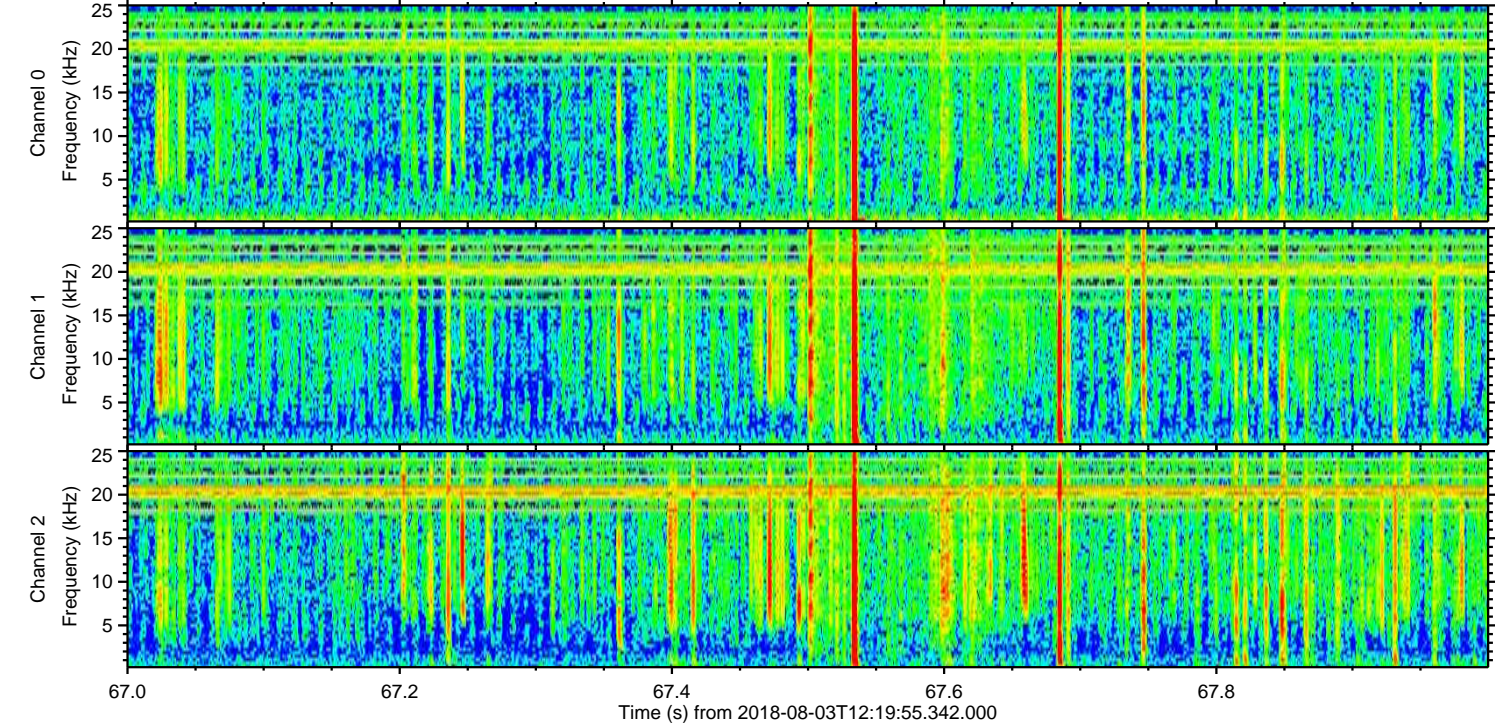
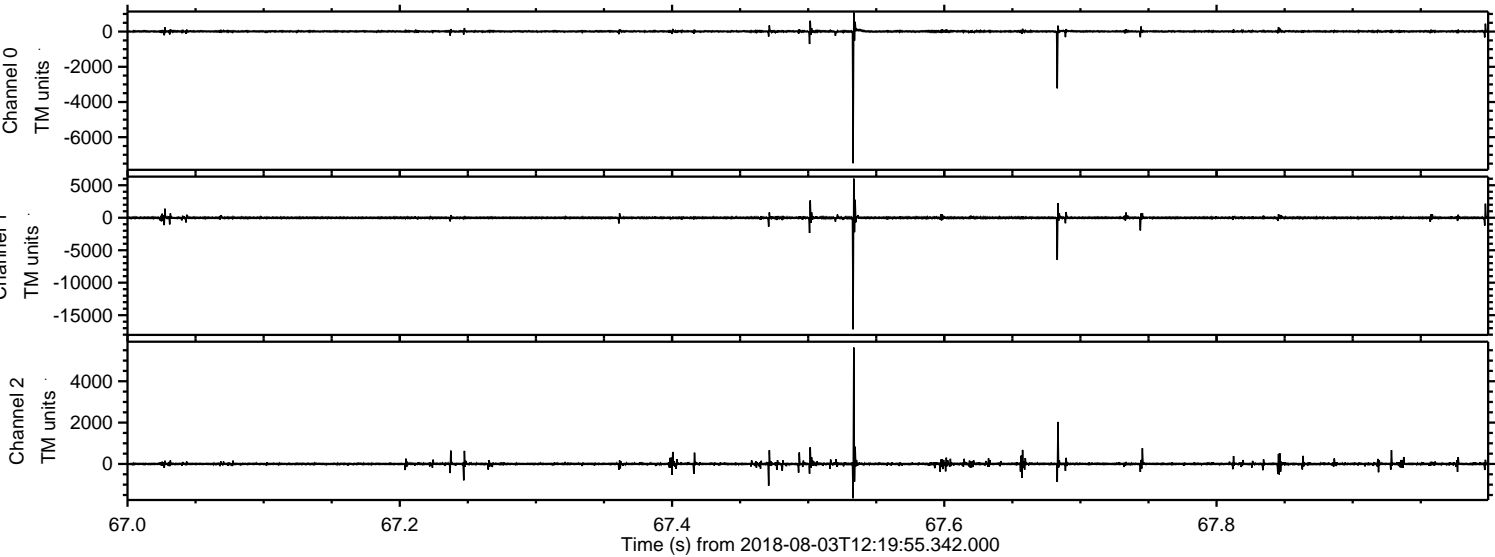
Processed Fri Aug 3 14:27:51 2018 by ELM ver.2012-10-06 from 001__elm20180803_121954__dat00.bin



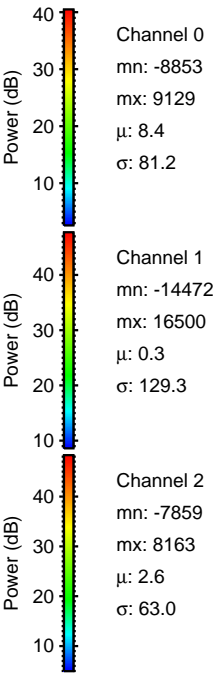
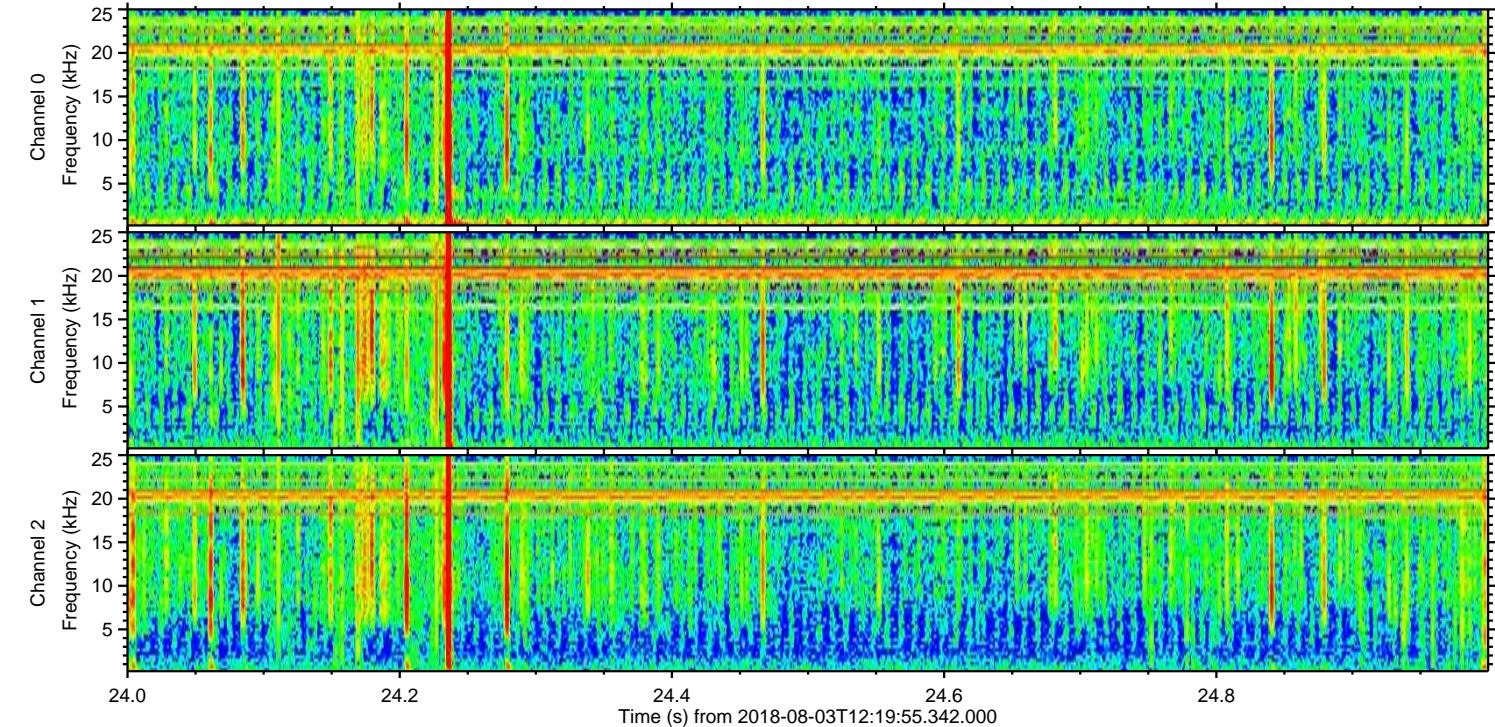
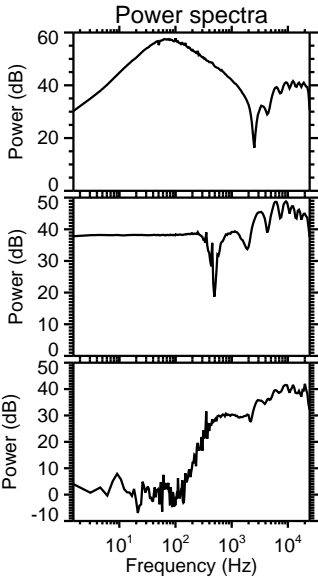
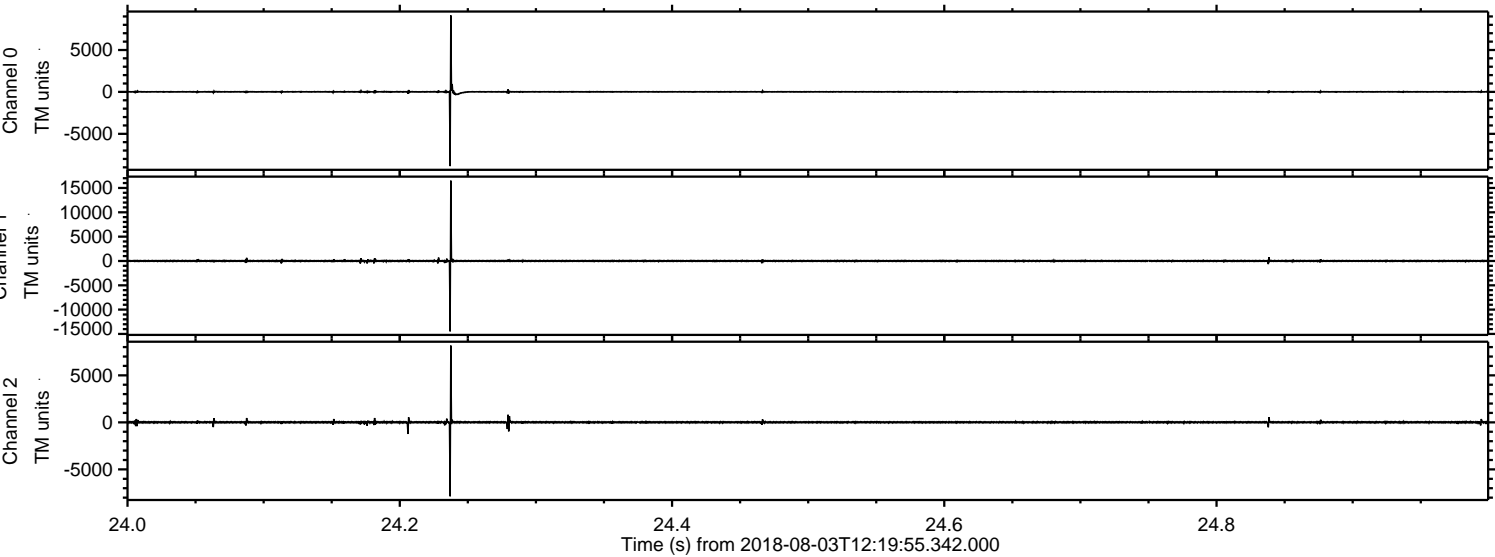
Processed Fri Aug 3 14:27:57 2018 by ELM ver.2012-10-06 from 001__elm20180803_121954__dat00.bin



Processed Fri Aug 3 14:27:58 2018 by ELM ver.2012-10-06 from 001__elm20180803_121954__dat00.bin

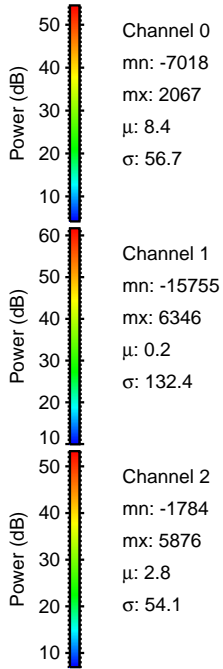
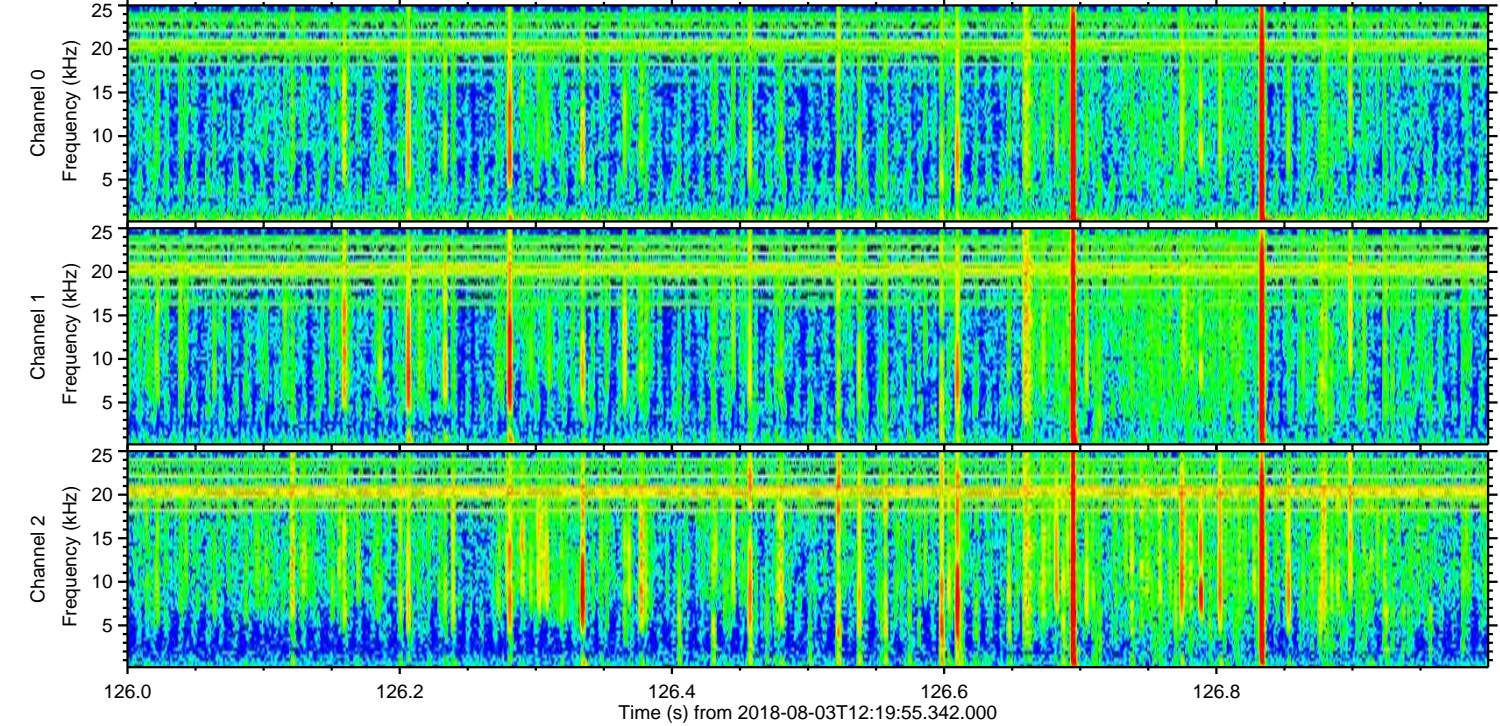
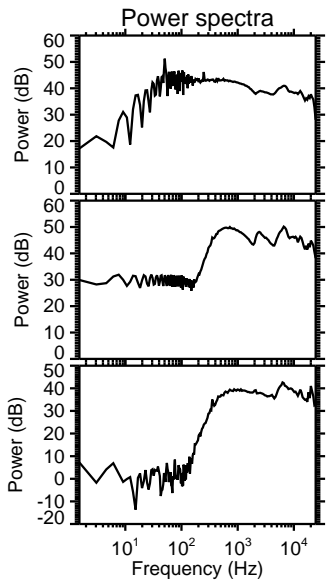
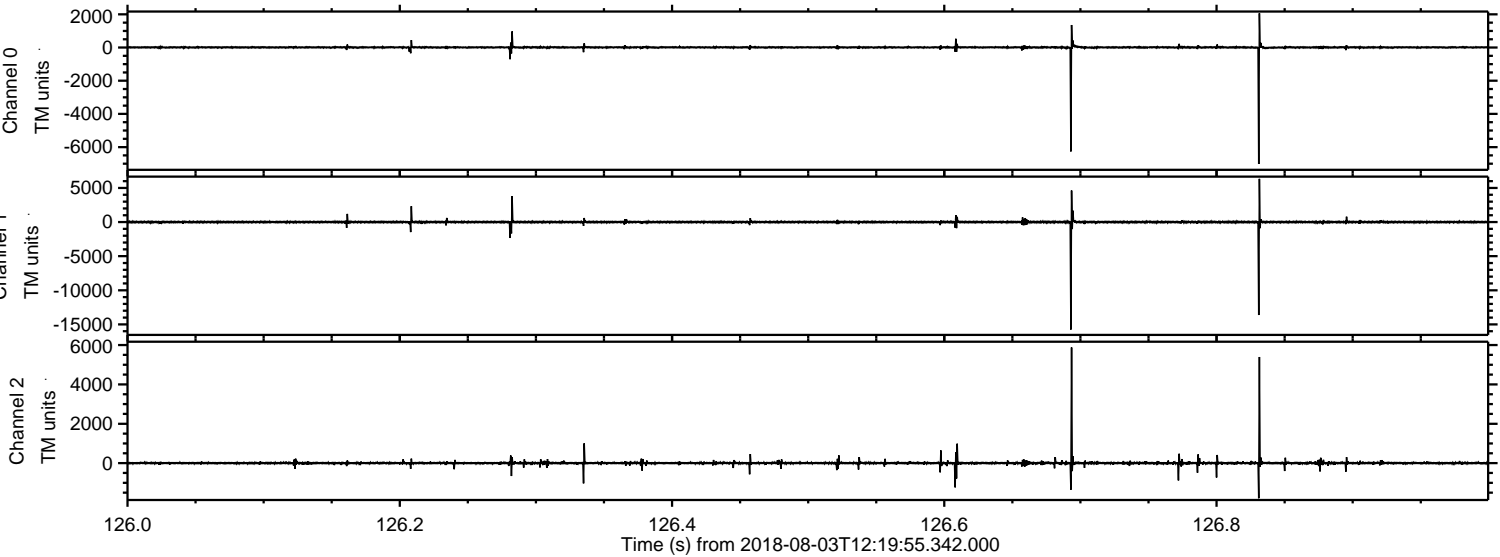


Processed Fri Aug 3 14:27:59 2018 by ELM ver.2012-10-06 from 001__elm20180803_121954__dat00.bin

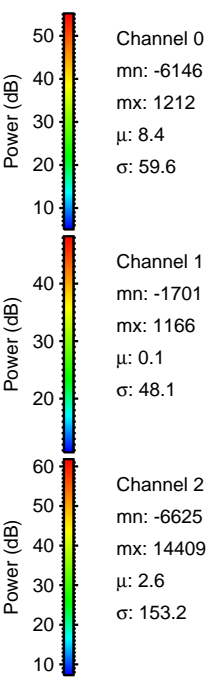
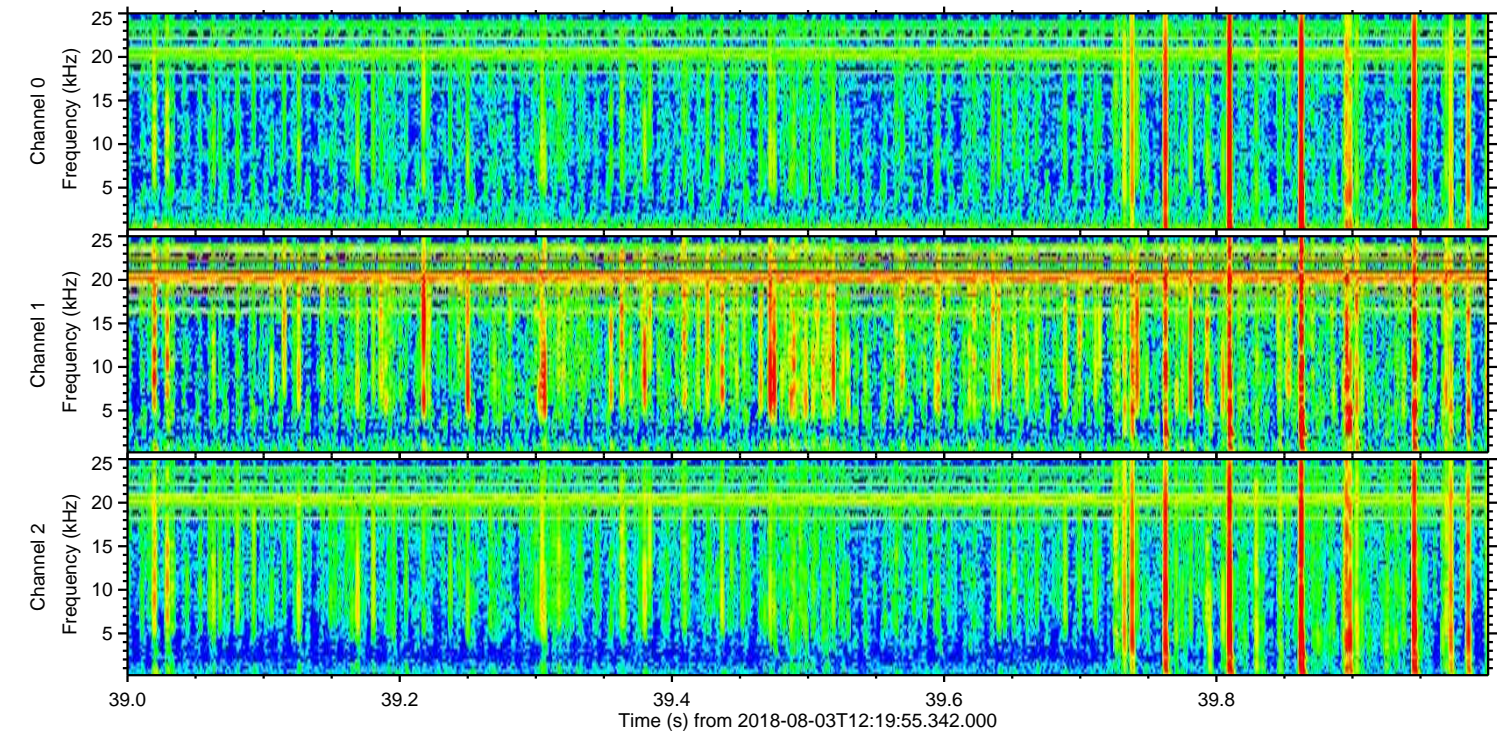
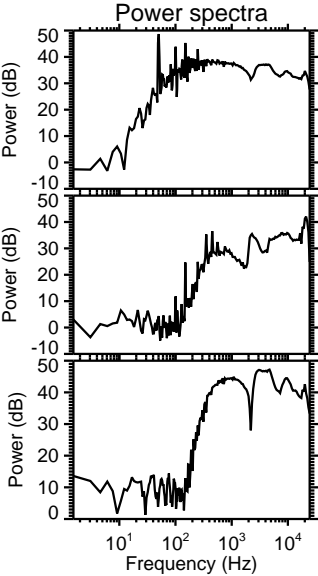
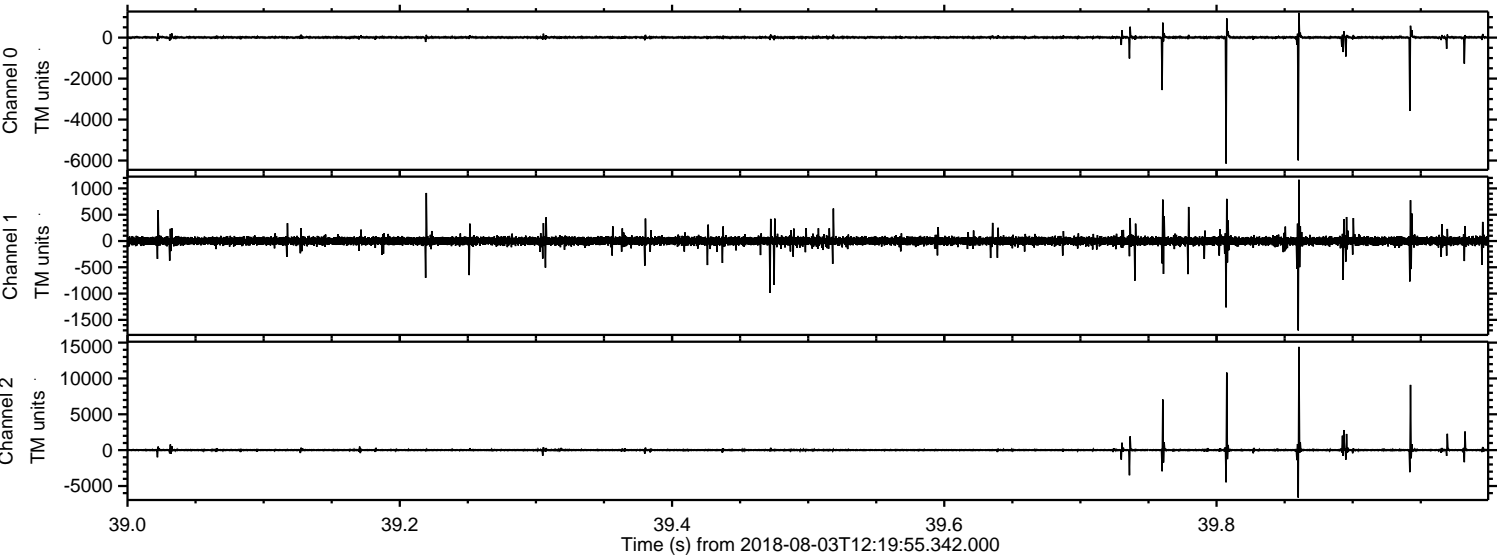


ELMAVAN 3D WAVEFORMS (Measured data sampled at 50 kHz) 51000 packets of 144 samples from 2018-08-03T12:19:55.342.000. Part 127/147

Processed Fri Aug 3 14:27:59 2018 by ELM ver.2012-10-06 from 001__elm20180803_121954__dat00.bin

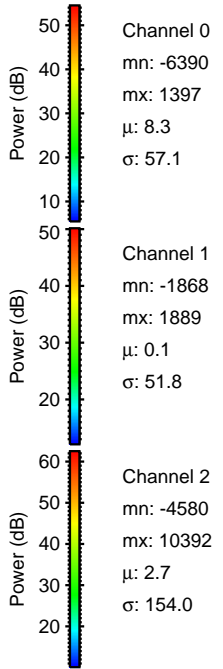
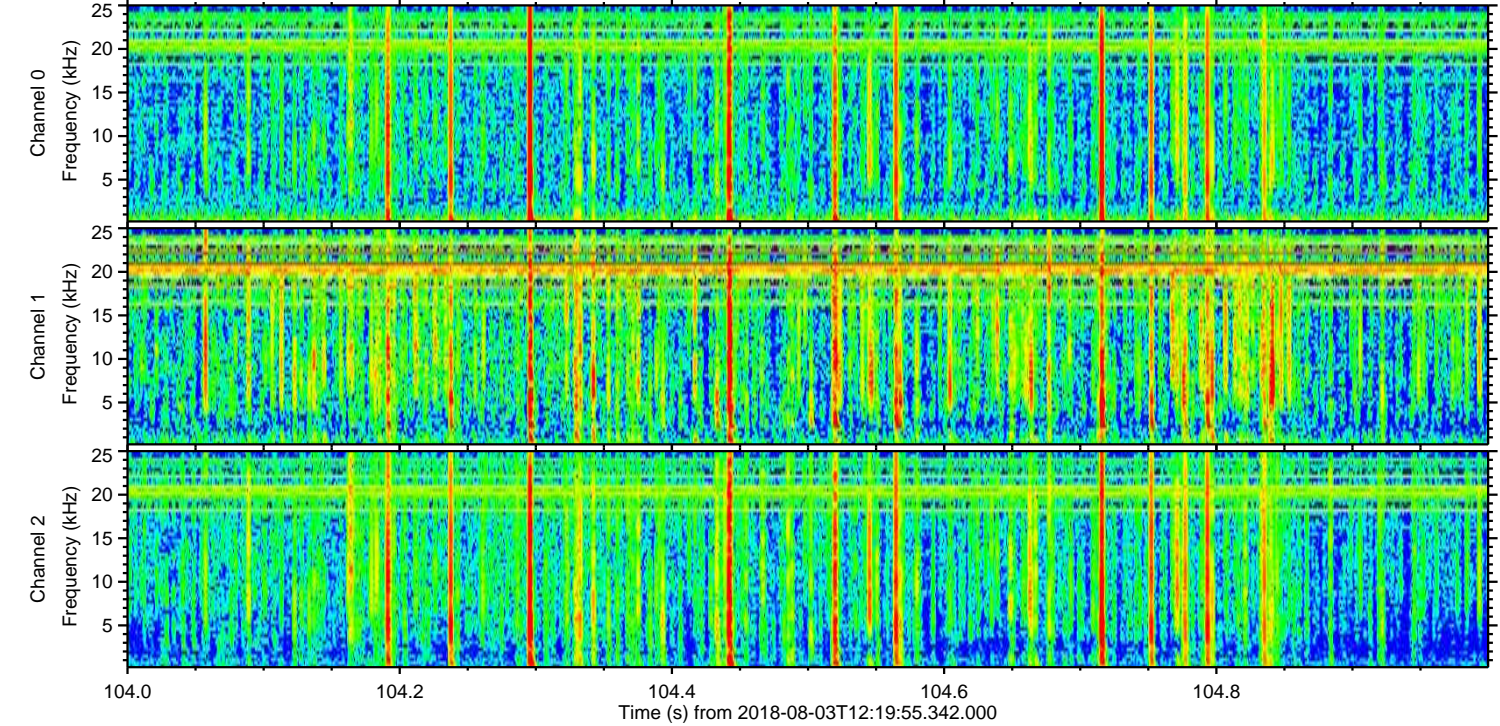
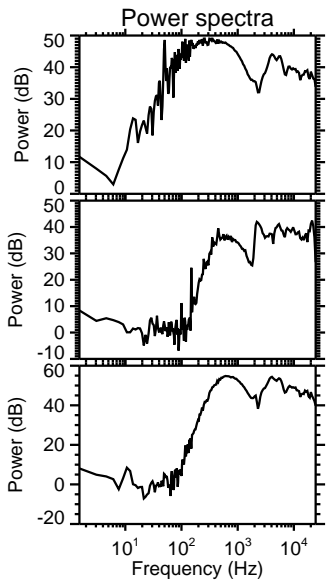
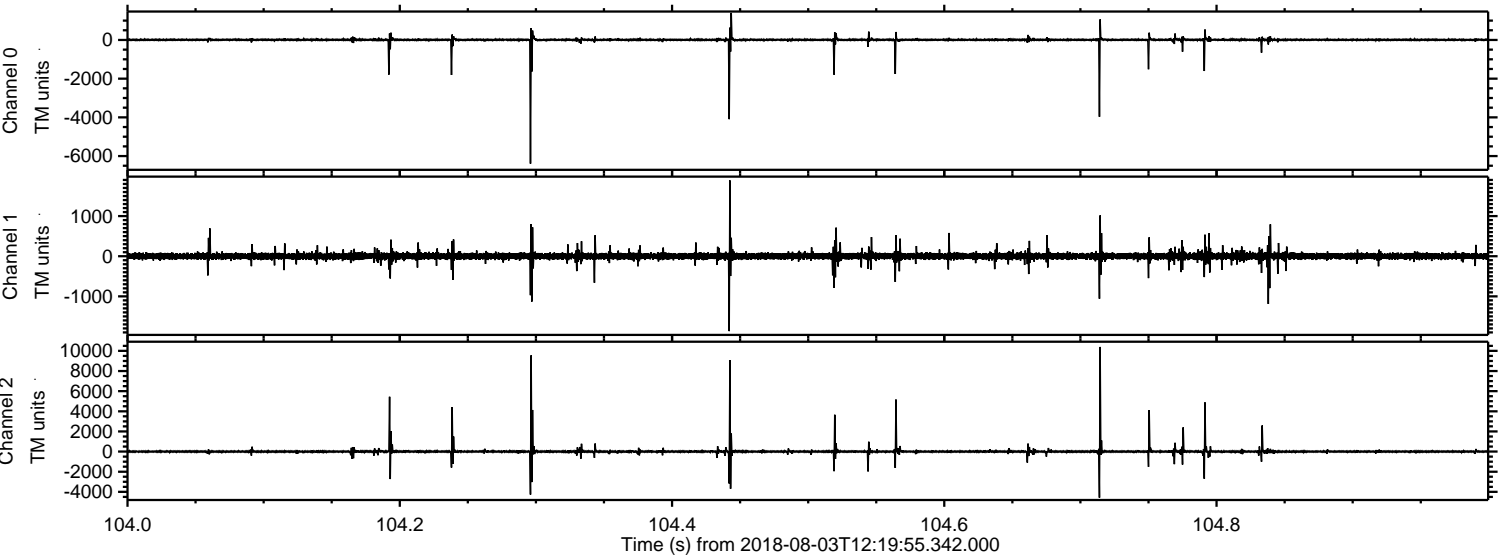


Processed Fri Aug 3 14:28:00 2018 by ELM ver.2012-10-06 from 001__elm20180803_121954__dat00.bin

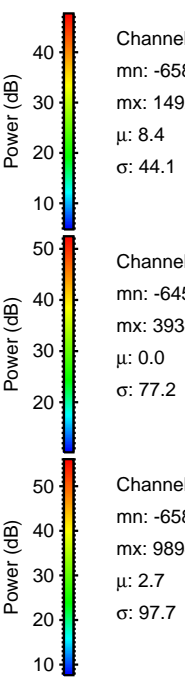
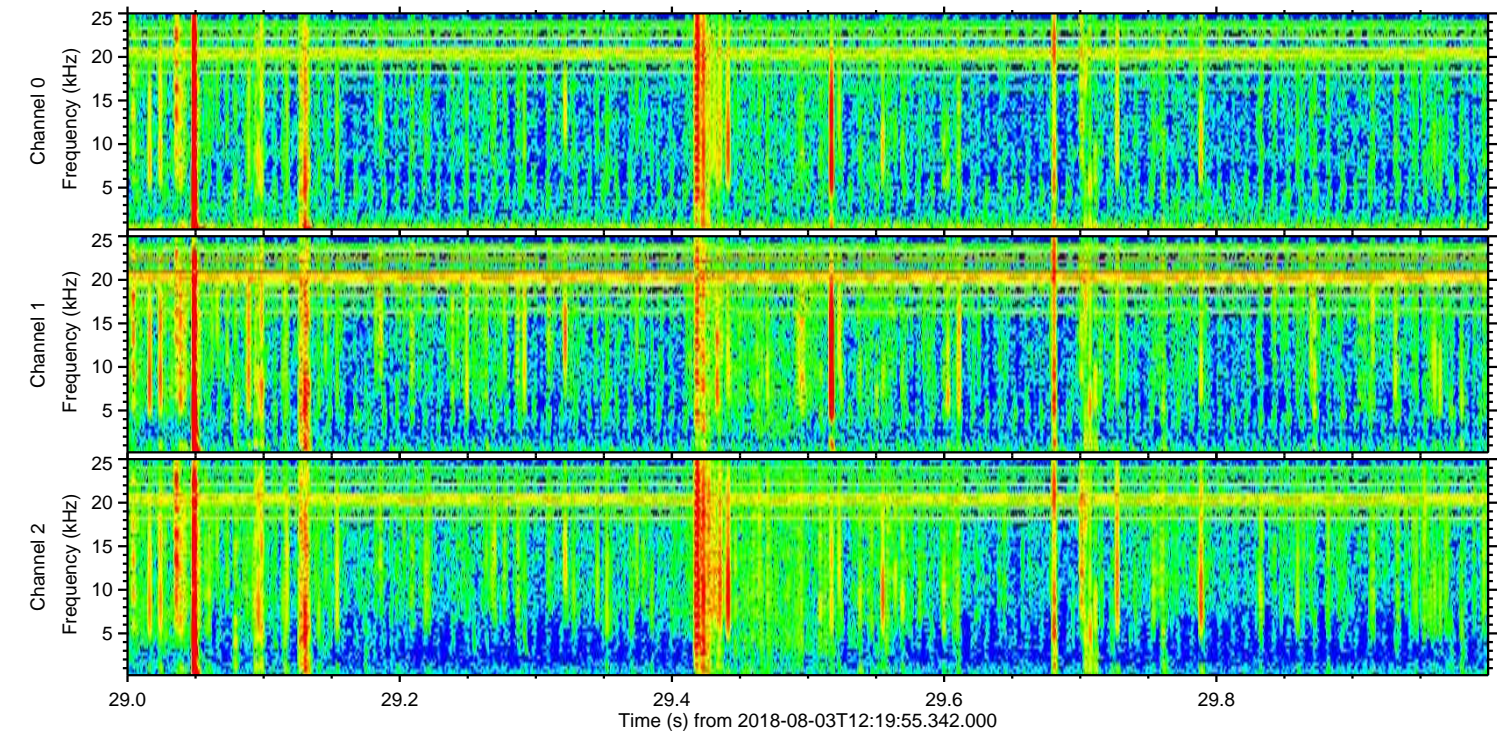
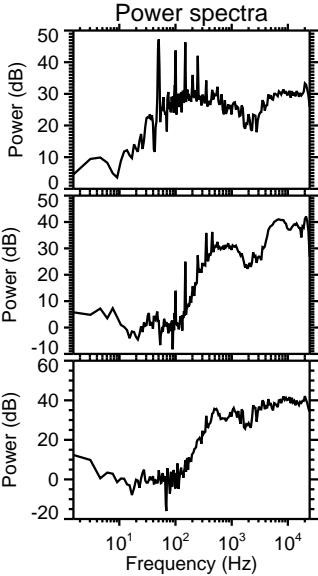
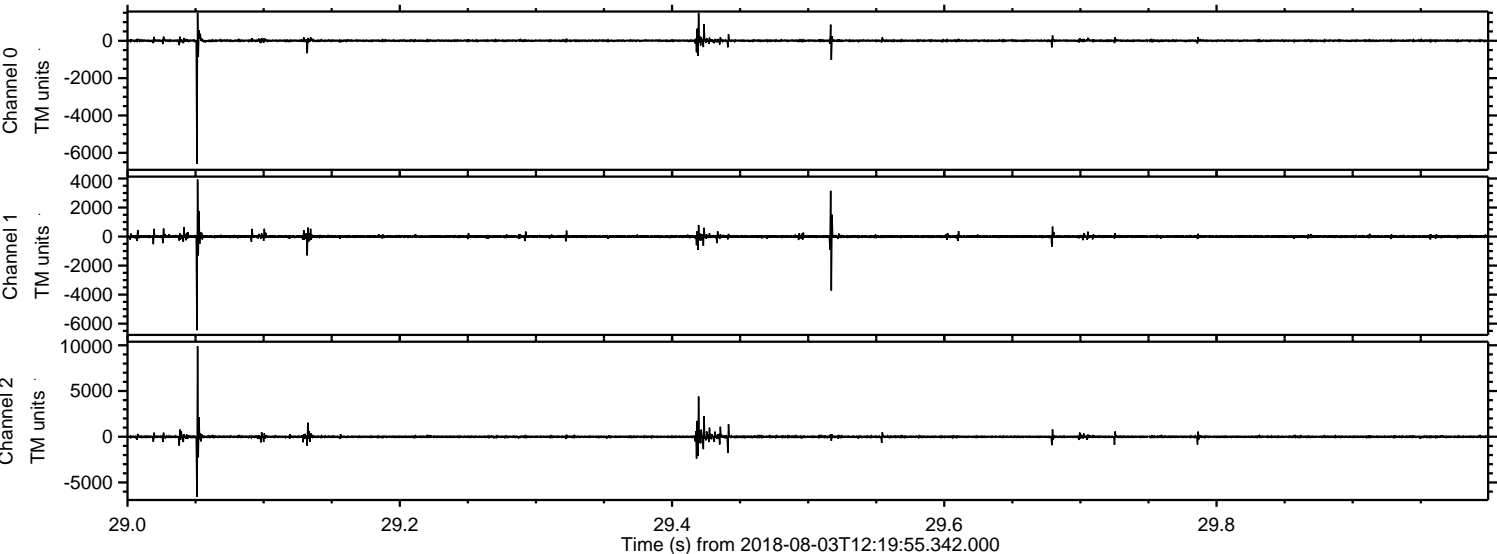


ELMAVAN 3D WAVEFORMS (Measured data sampled at 50 kHz) 51000 packets of 144 samples from 2018-08-03T12:19:55.342.000. Part 105/147

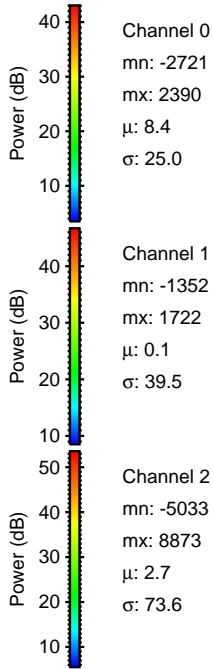
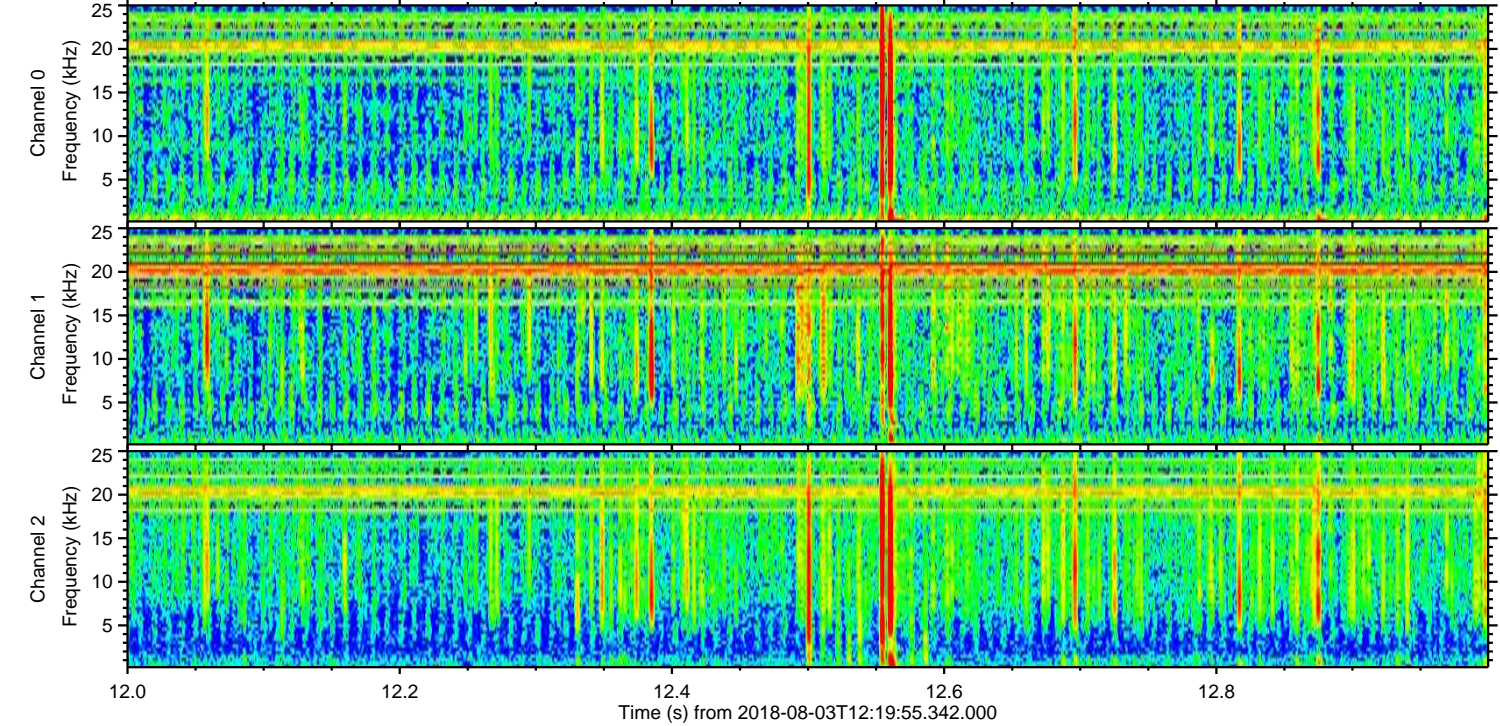
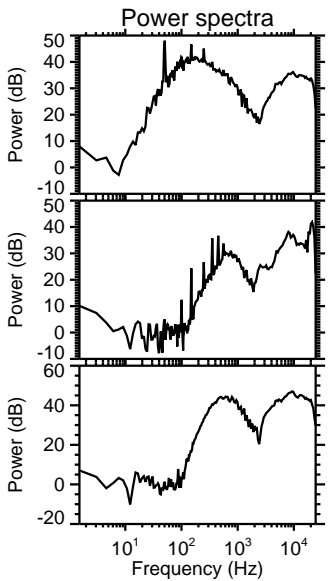
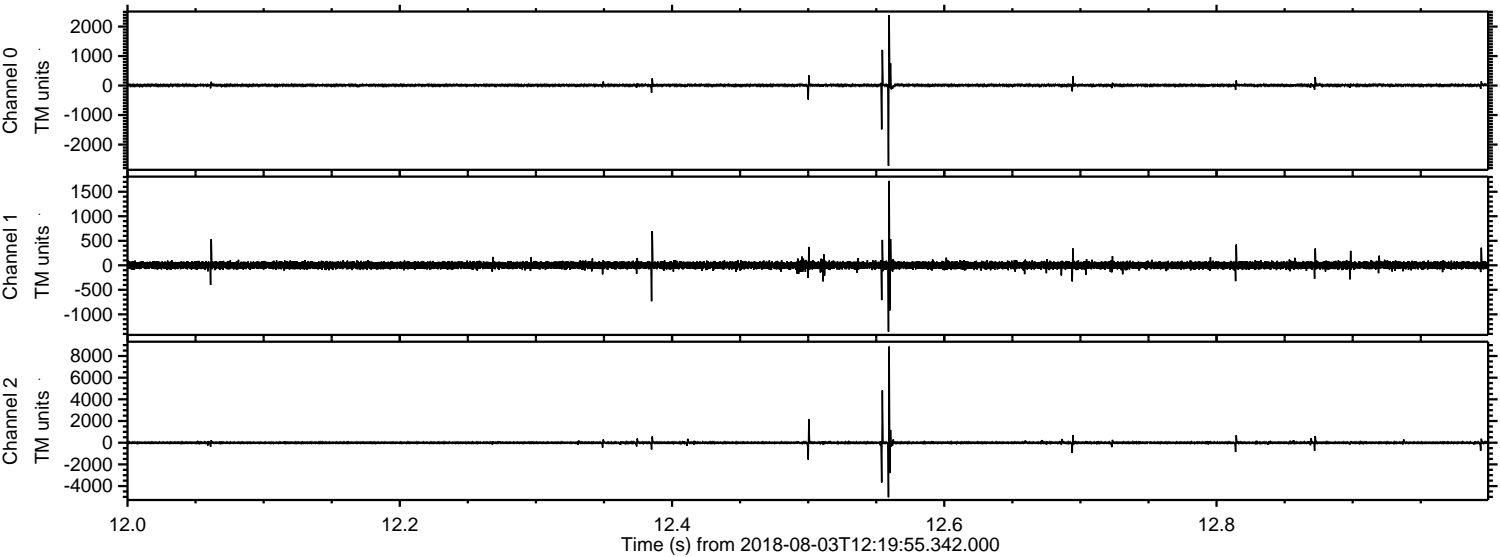
Processed Fri Aug 3 14:28:00 2018 by ELM ver.2012-10-06 from 001__elm20180803_121954__dat00.bin



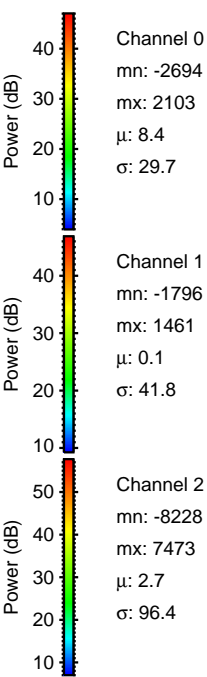
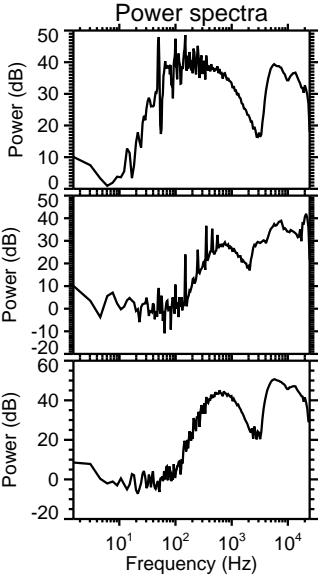
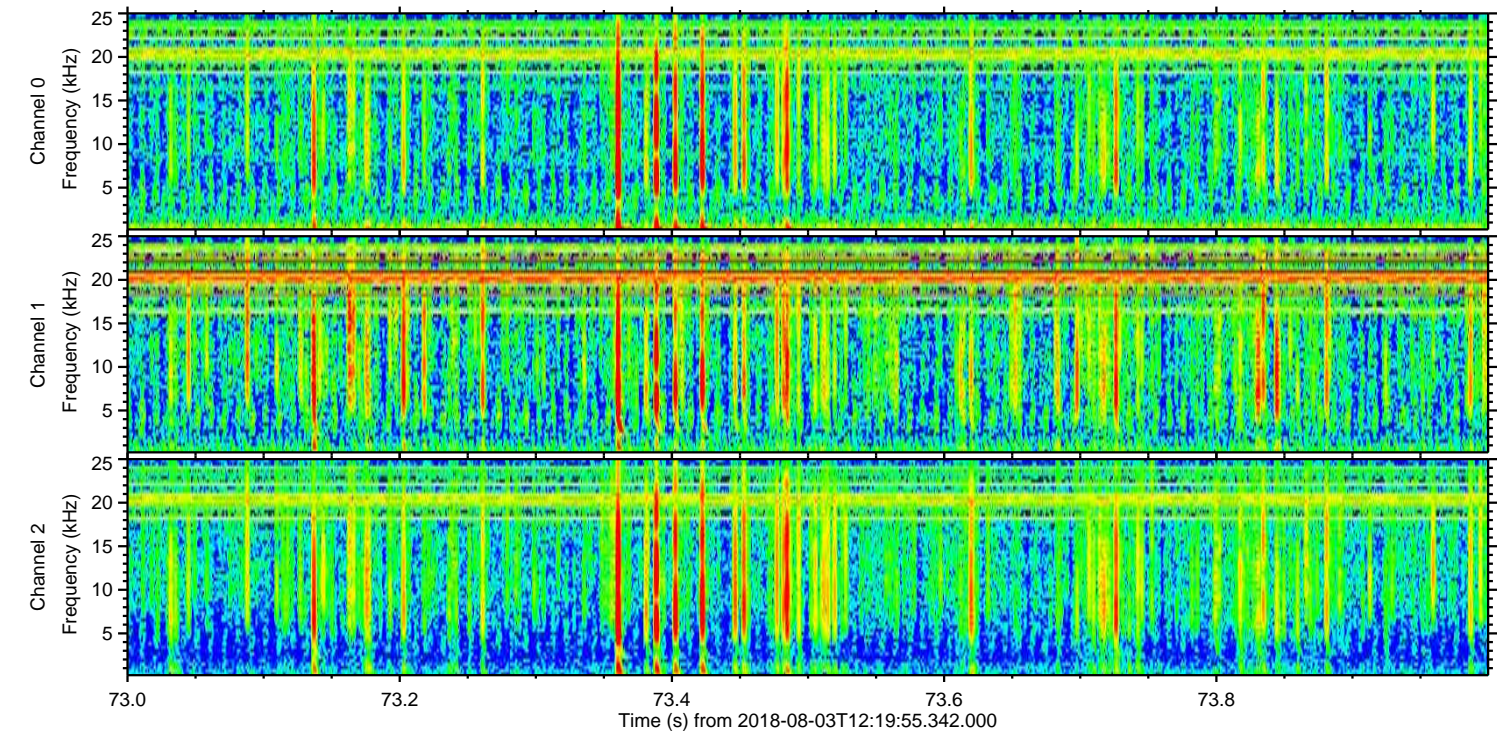
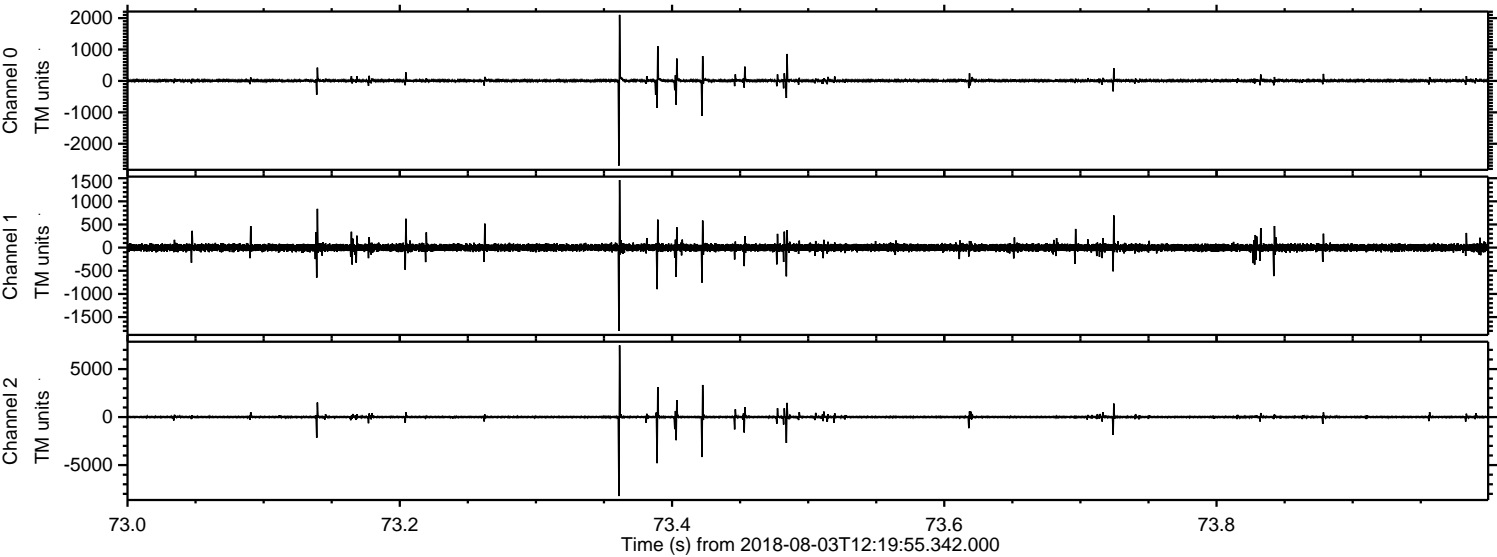
Processed Fri Aug 3 14:28:01 2018 by ELM ver.2012-10-06 from 001__elm20180803_121954__dat00.bin



Processed Fri Aug 3 14:28:02 2018 by ELM ver.2012-10-06 from 001__elm20180803_121954__dat00.bin



Processed Fri Aug 3 14:28:03 2018 by ELM ver.2012-10-06 from 001__elm20180803_121954__dat00.bin



Channel 0
mn: -2694
mx: 2103
 μ : 8.4
 σ : 29.7

Channel 1
mn: -1796
mx: 1461
 μ : 0.1
 σ : 41.8

Channel 2
mn: -8228
mx: 7473
 μ : 2.7
 σ : 96.4

Processed Fri Aug 3 14:28:04 2018 by ELM ver.2012-10-06 from 001__elm20180803_121954__dat00.bin

