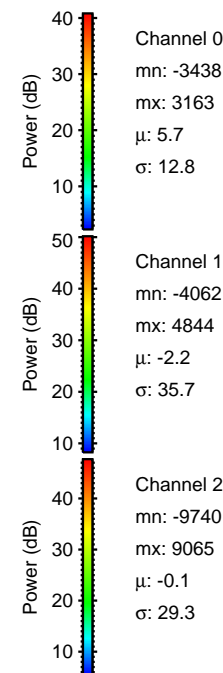
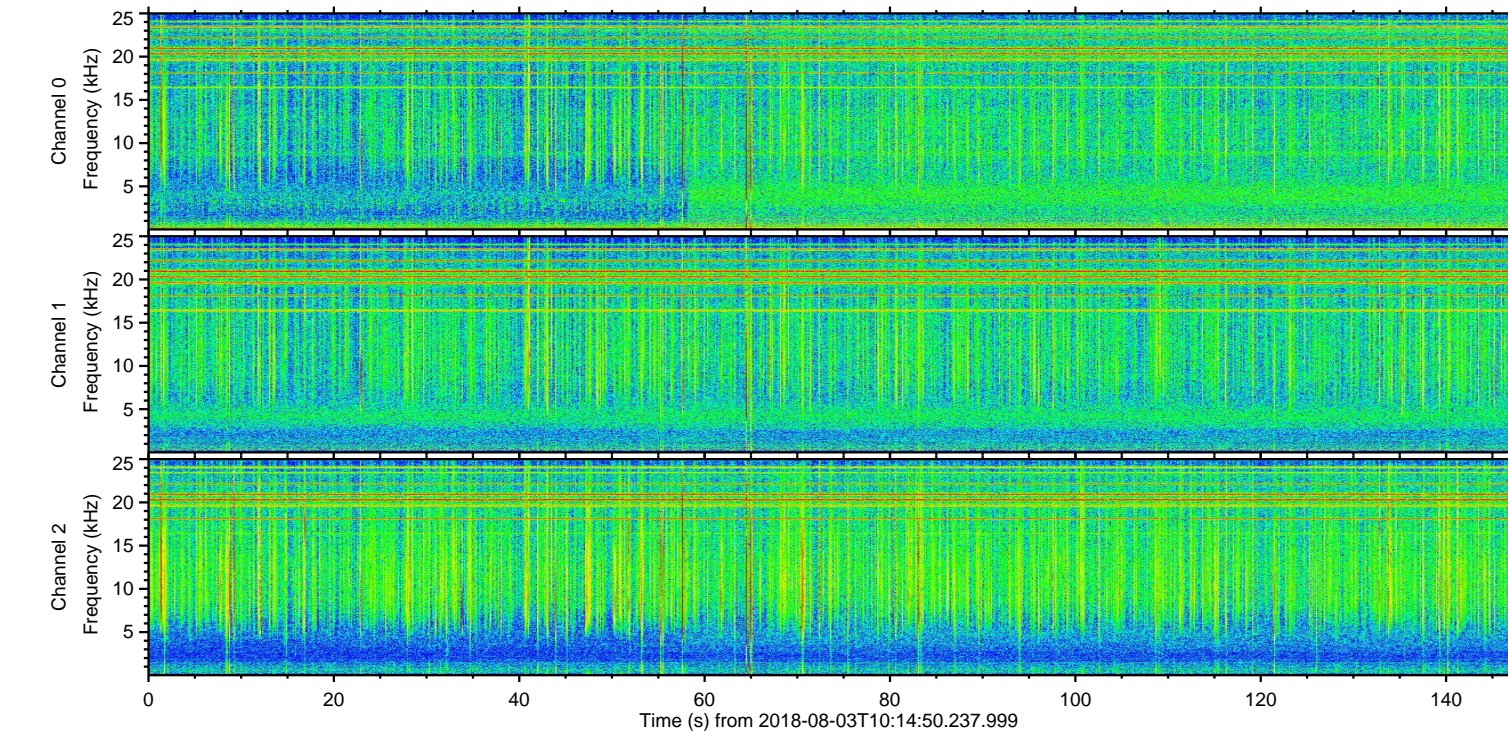
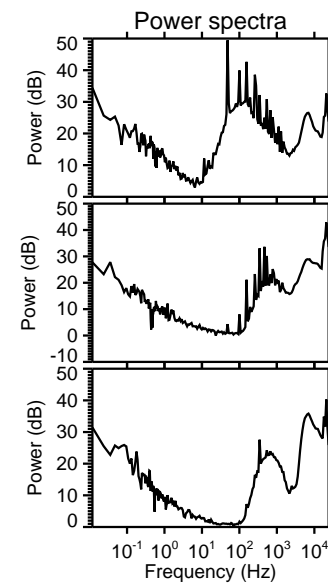
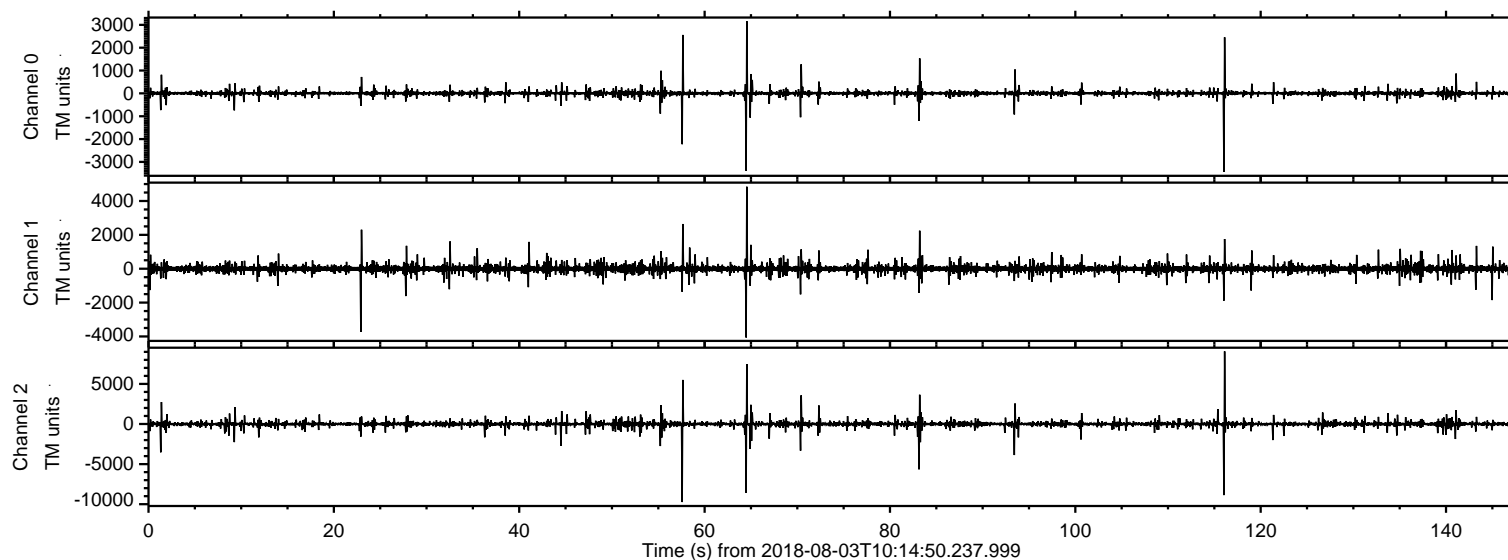
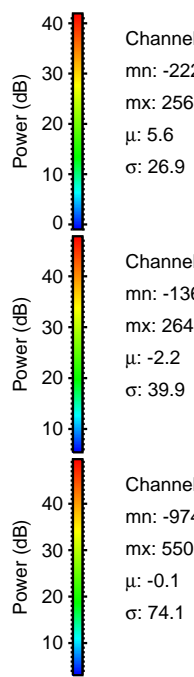
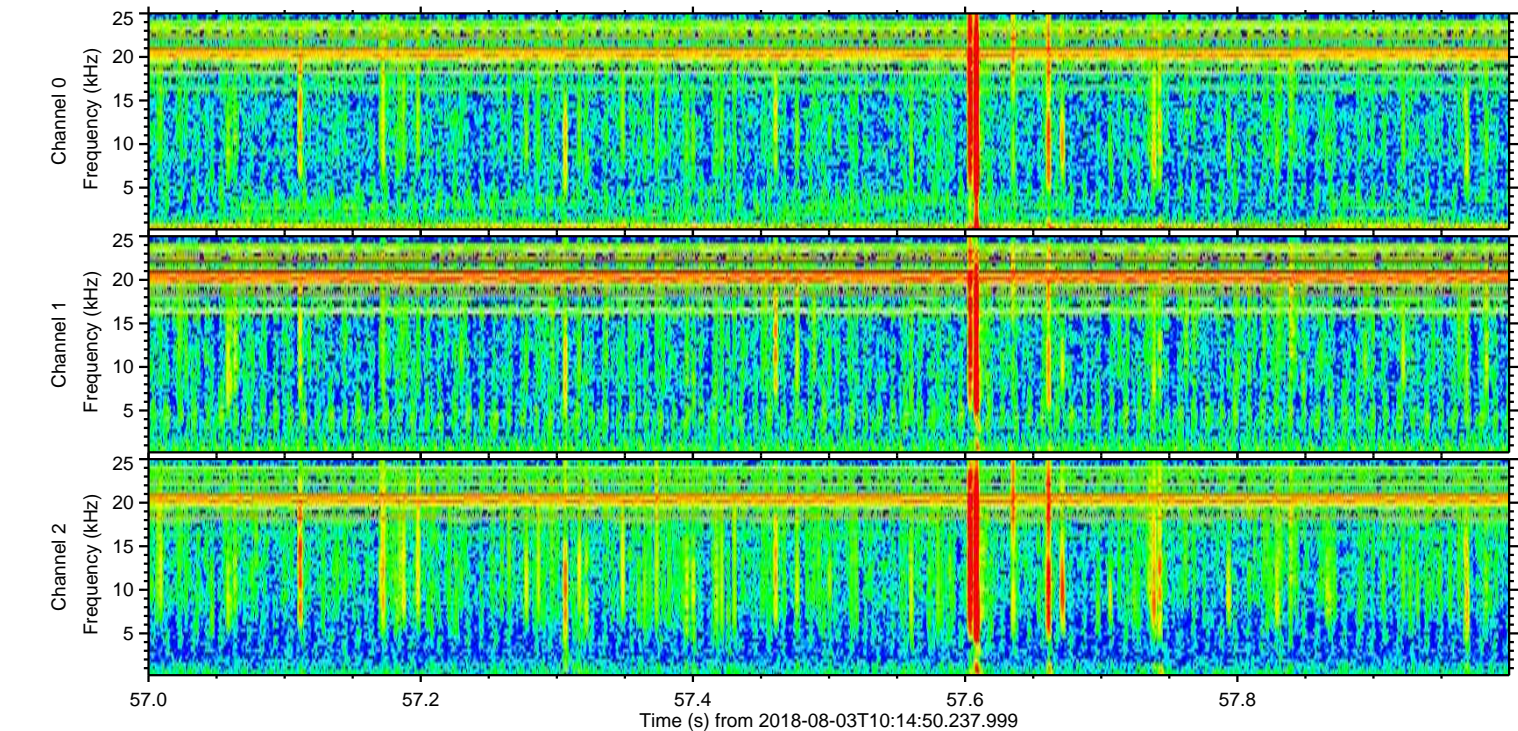
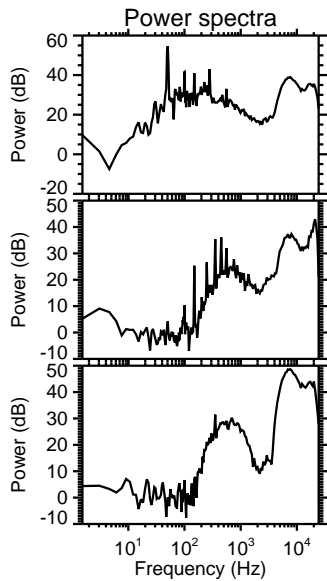
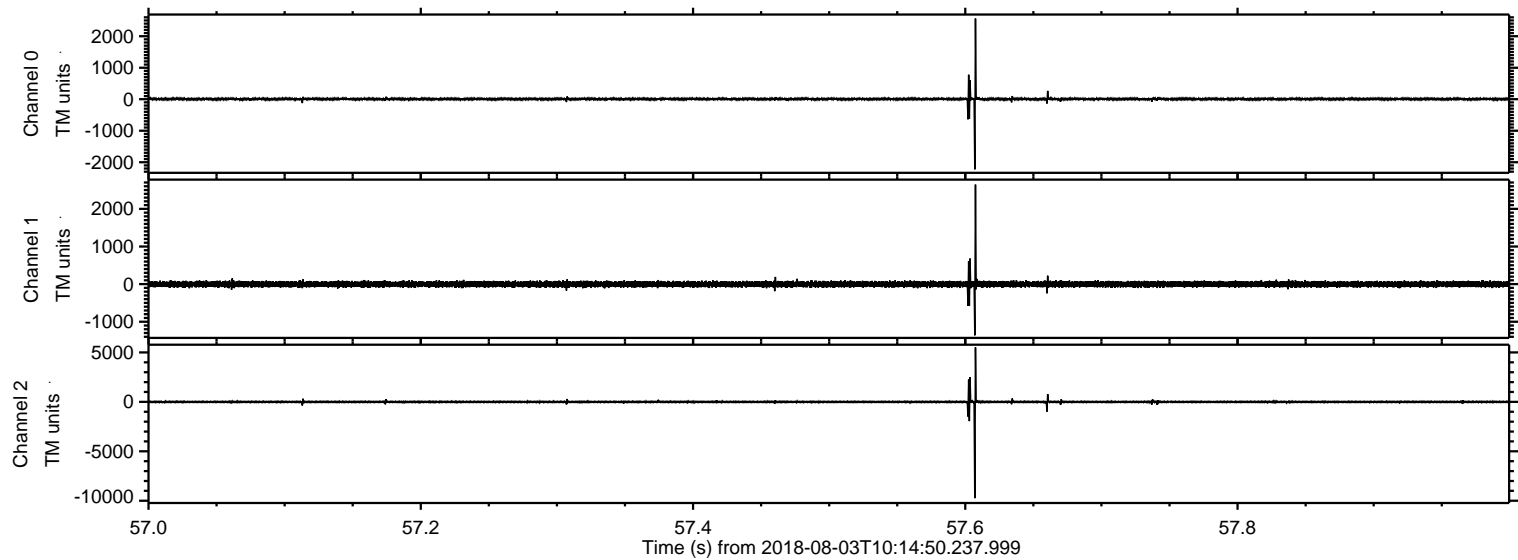


ELMAVAN 3D WAVEFORMS (Measured data sampled at 50 kHz) 51000 packets of 144 samples from 2018-08-03T10:14:50.237.999.

Processed Fri Aug 3 12:22:22 2018 by ELM ver.2012-10-06 from 001__elm20180803_101449__dat00.bin



Processed Fri Aug 3 12:22:28 2018 by ELM ver.2012-10-06 from 001__elm20180803_101449__dat00.bin



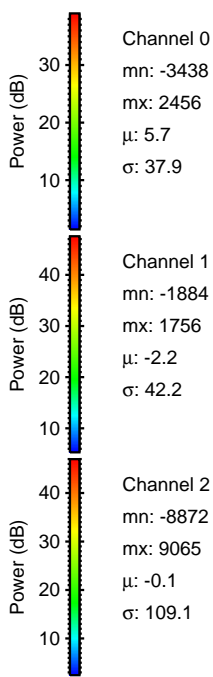
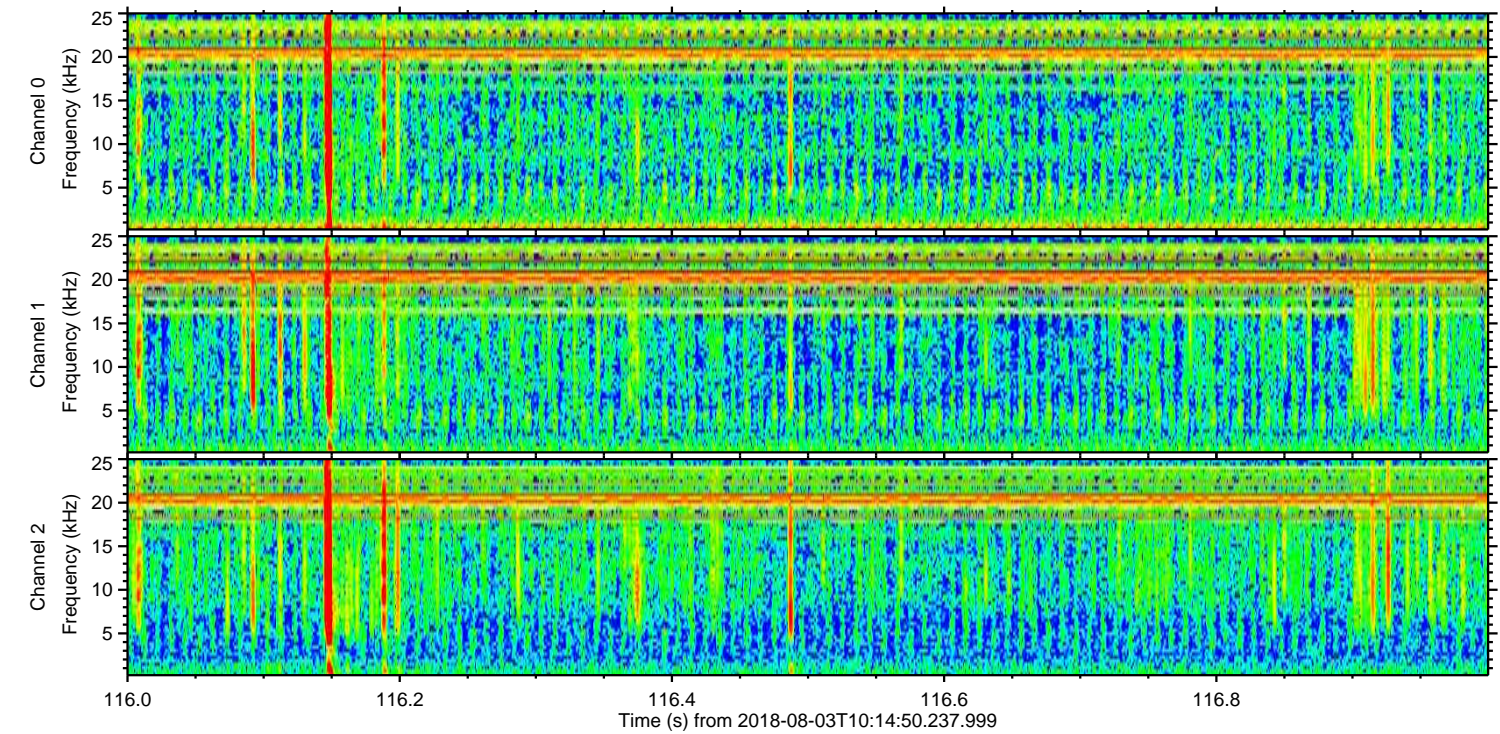
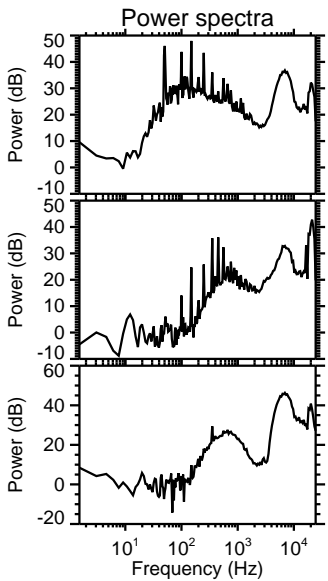
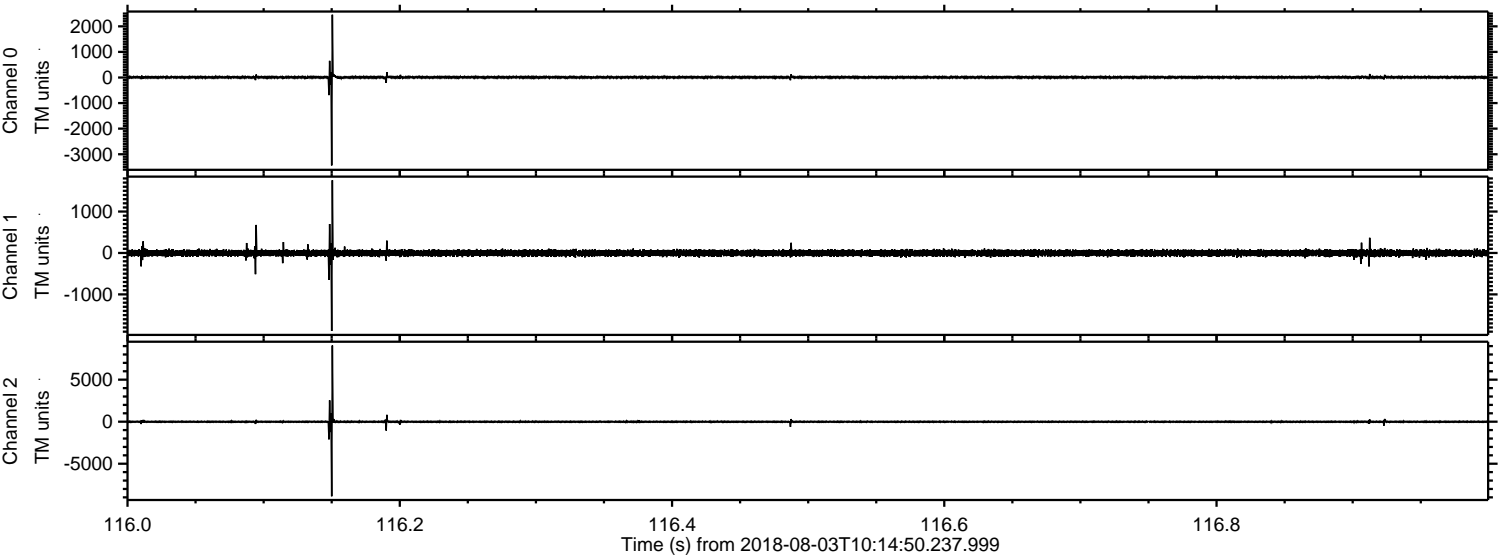
Channel 0
mn: -2225
mx: 2560
 μ : 5.6
 σ : 26.9

Channel 1
mn: -1362
mx: 2645
 μ : -2.2
 σ : 39.9

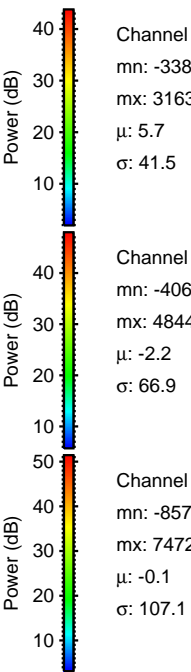
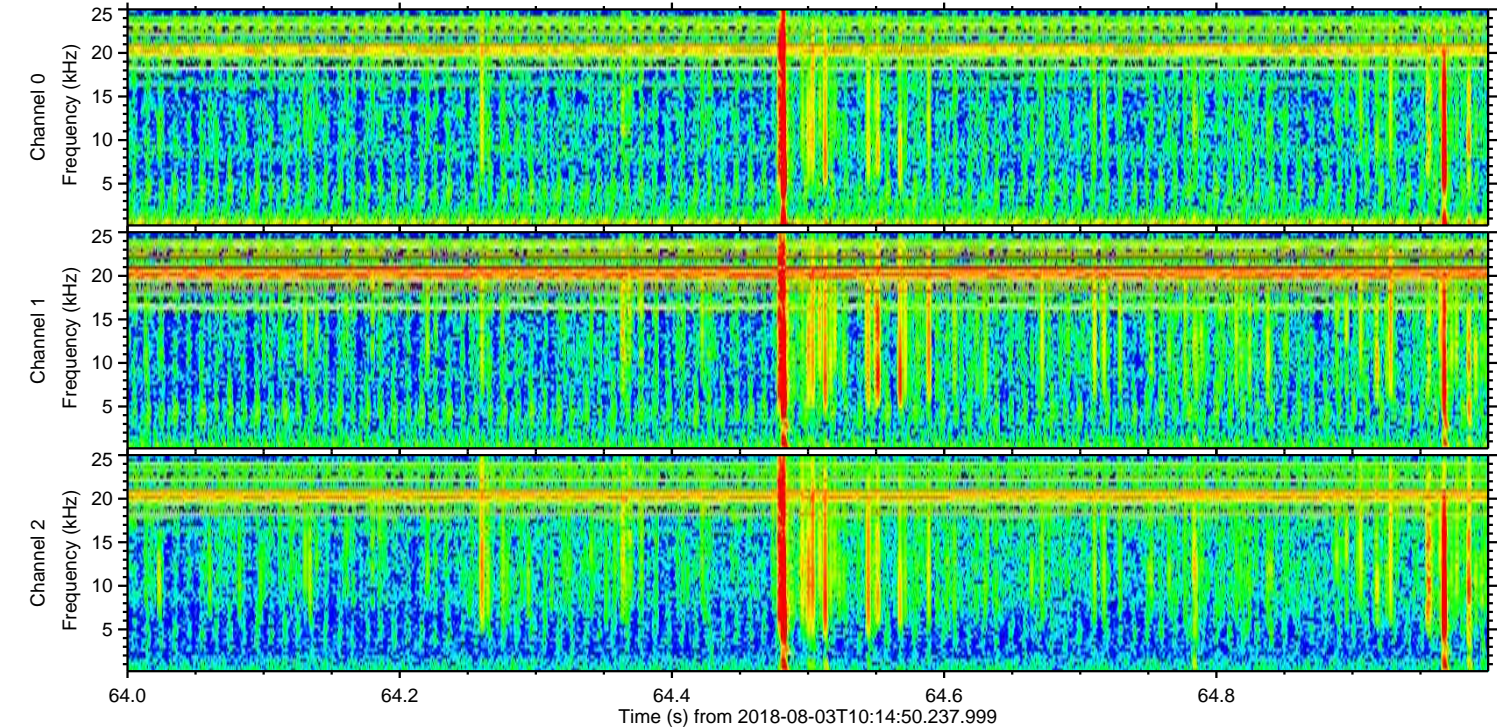
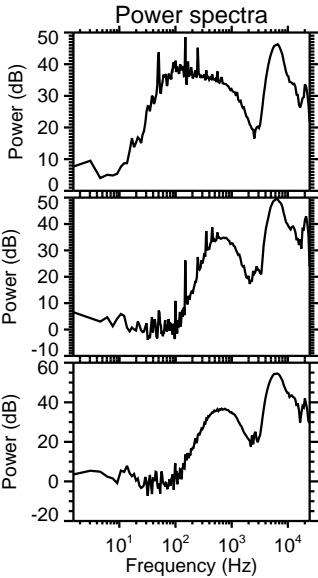
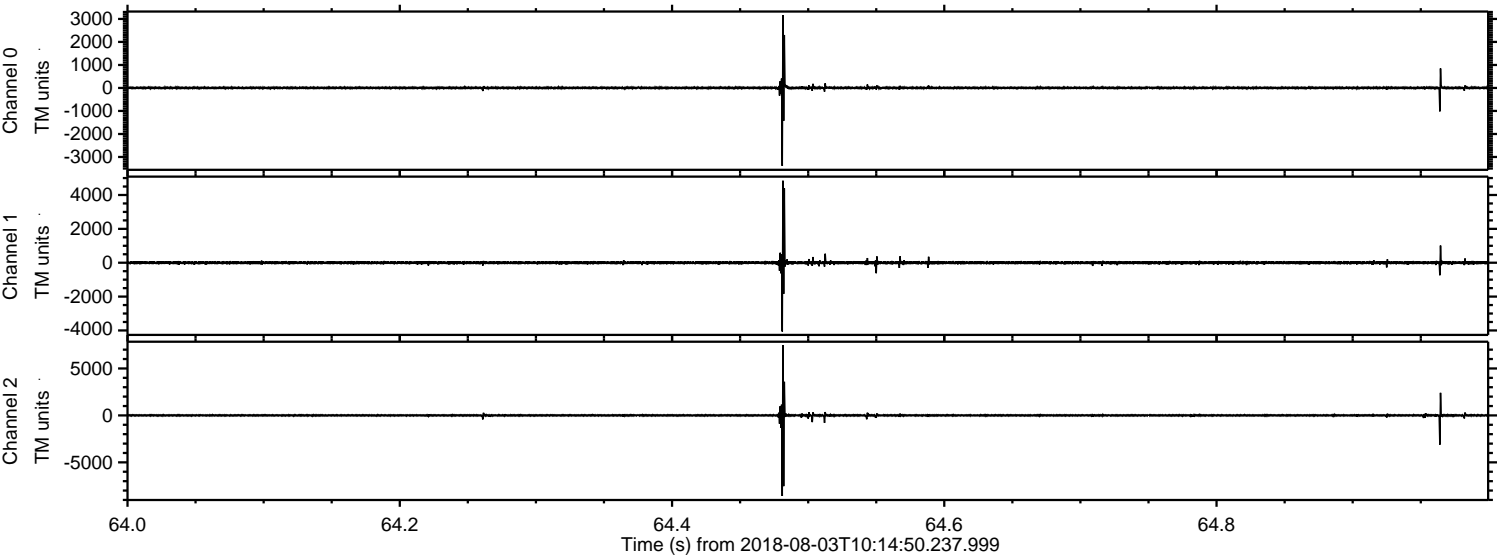
Channel 2
mn: -9740
mx: 5505
 μ : -0.1
 σ : 74.1

ELMAVAN 3D WAVEFORMS (Measured data sampled at 50 kHz) 51000 packets of 144 samples from 2018-08-03T10:14:50.237.999. Part 117/147

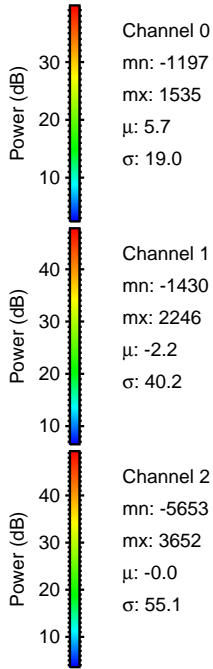
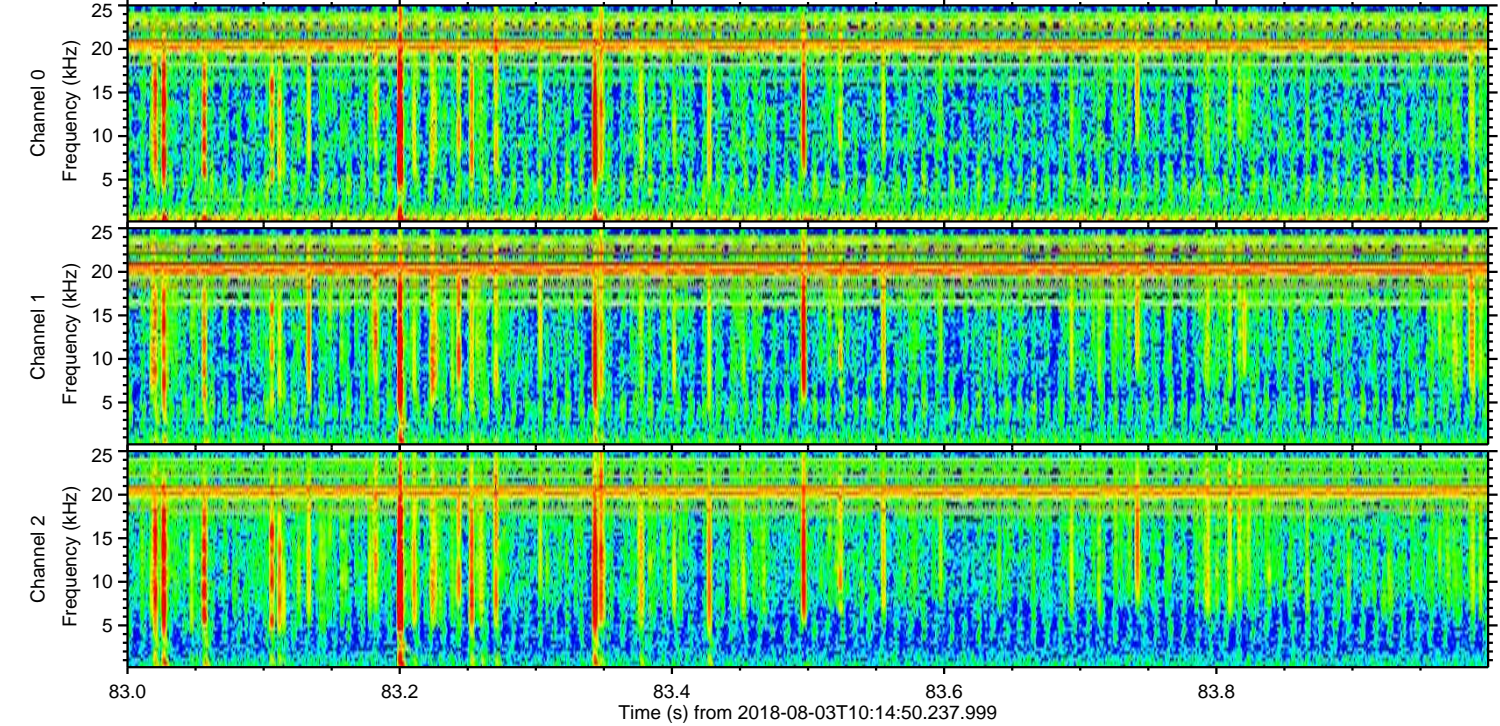
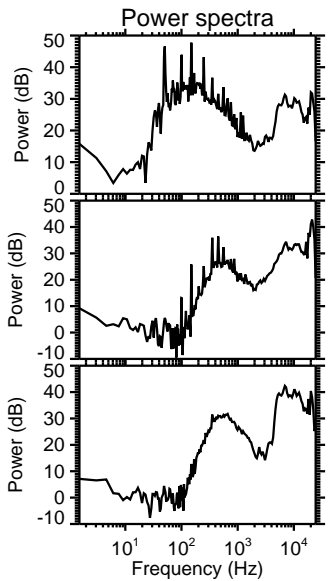
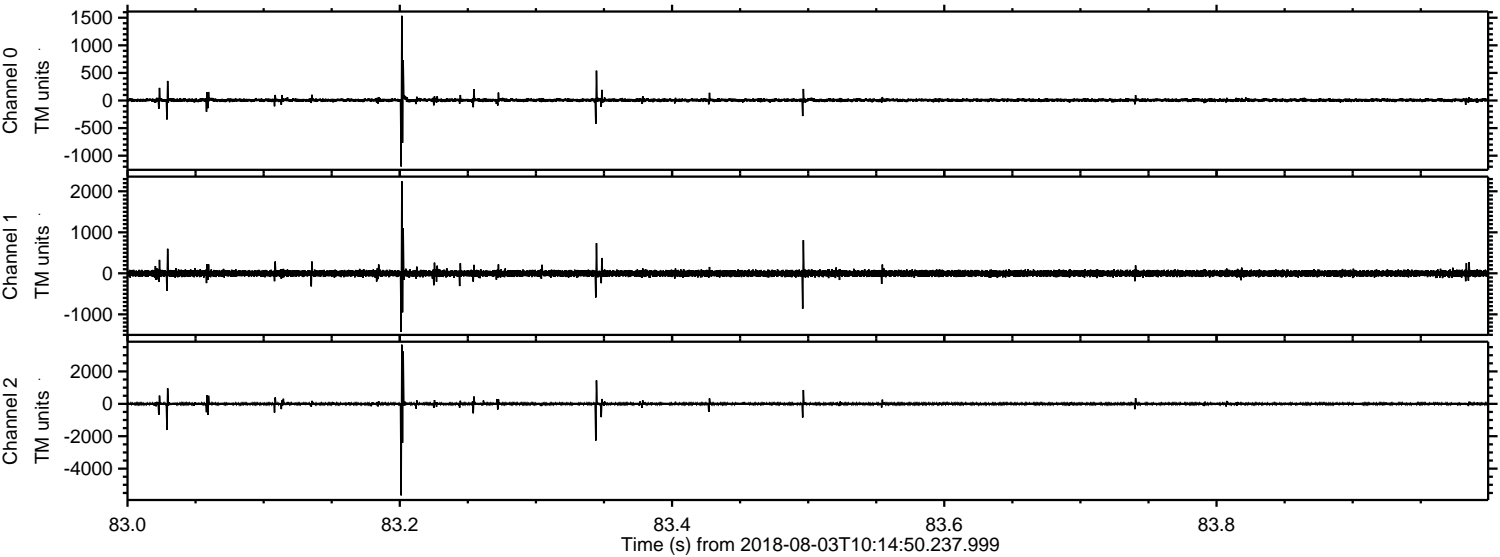
Processed Fri Aug 3 12:22:29 2018 by ELM ver.2012-10-06 from 001__elm20180803_101449__dat00.bin



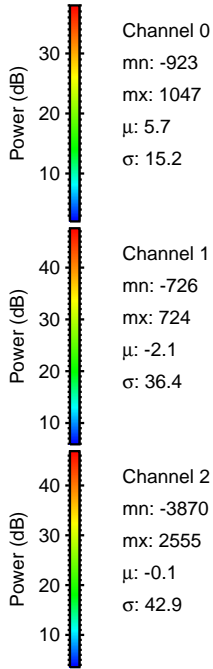
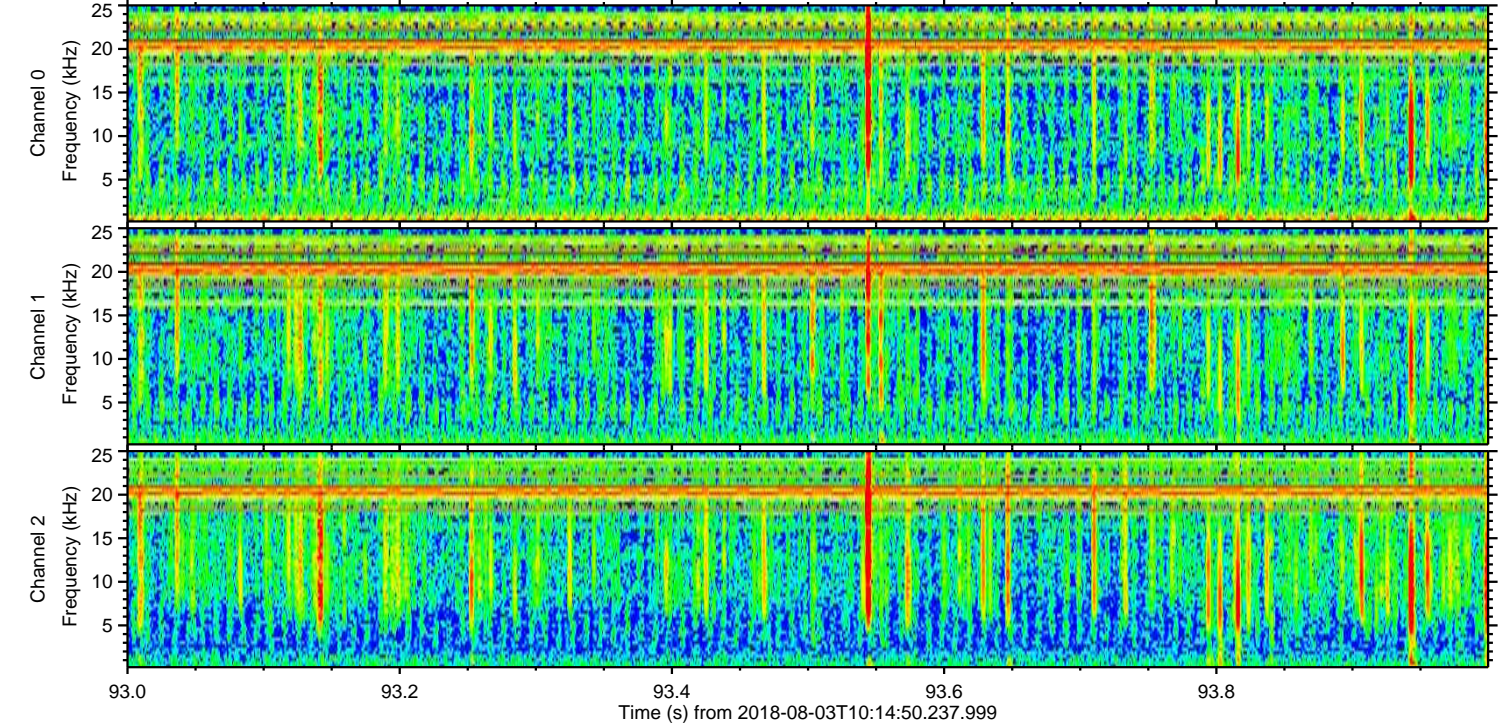
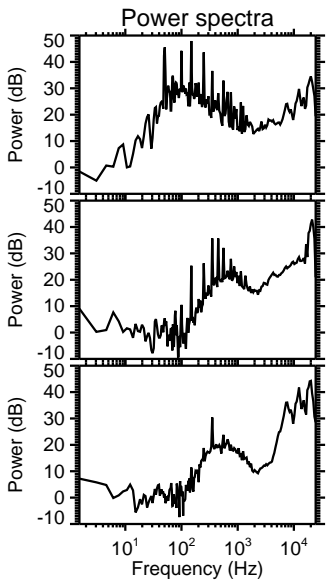
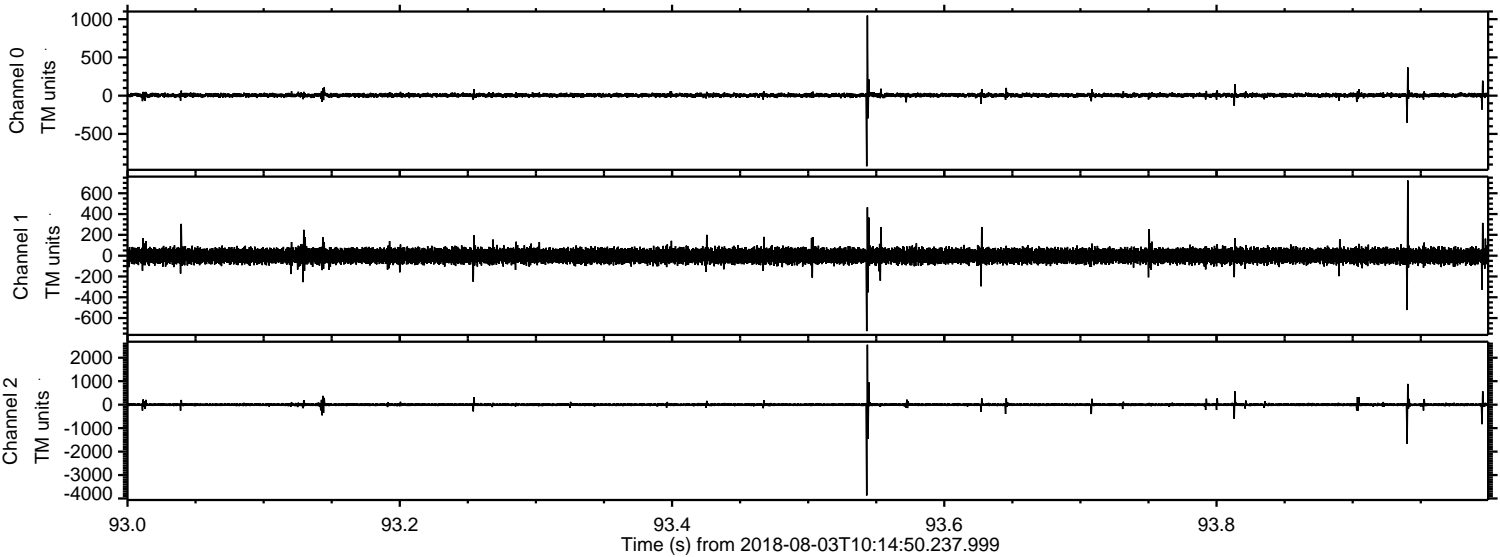
Processed Fri Aug 3 12:22:30 2018 by ELM ver.2012-10-06 from 001__elm20180803_101449__dat00.bin



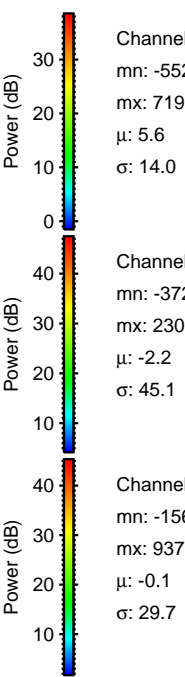
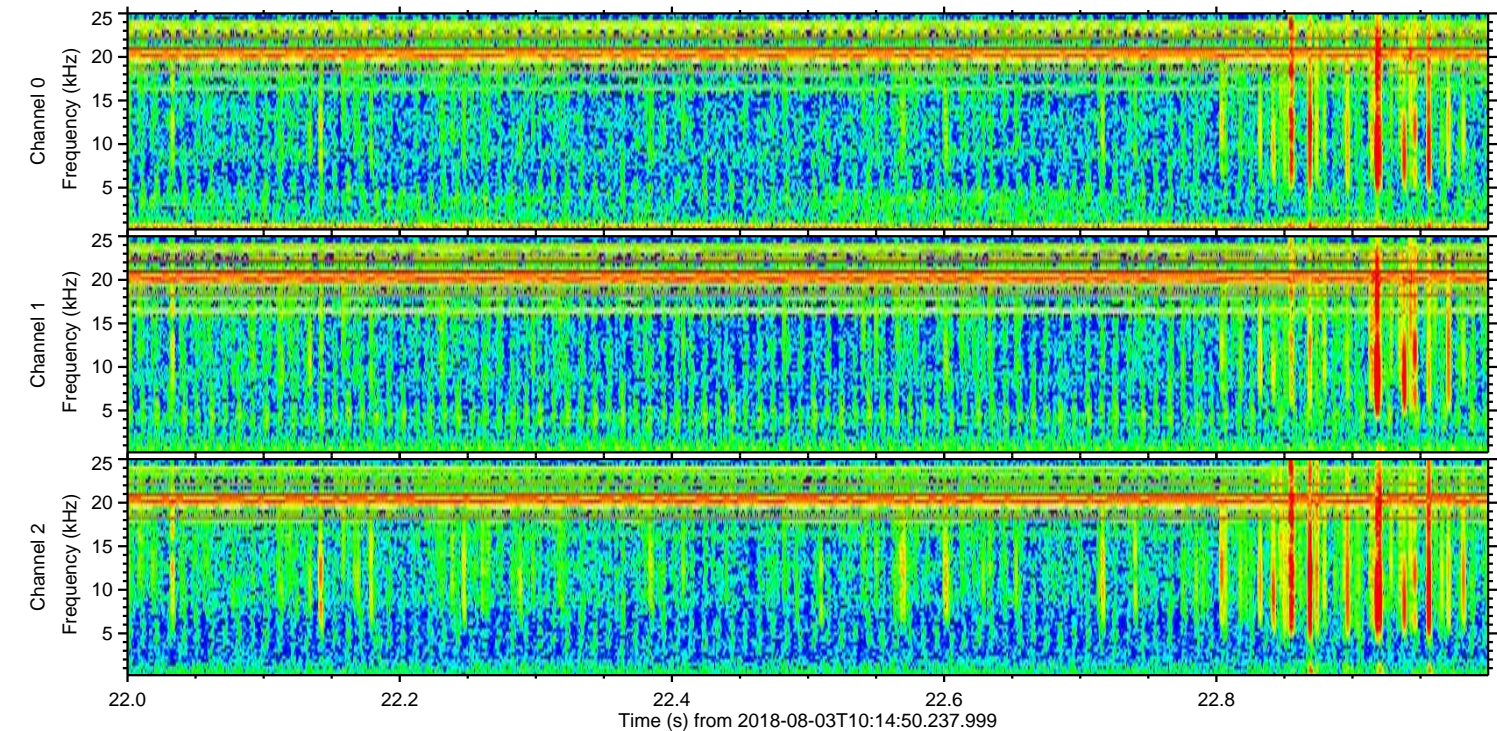
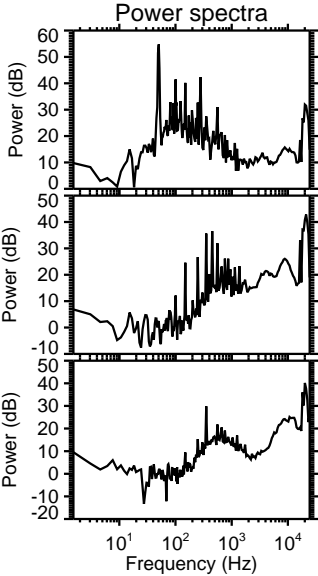
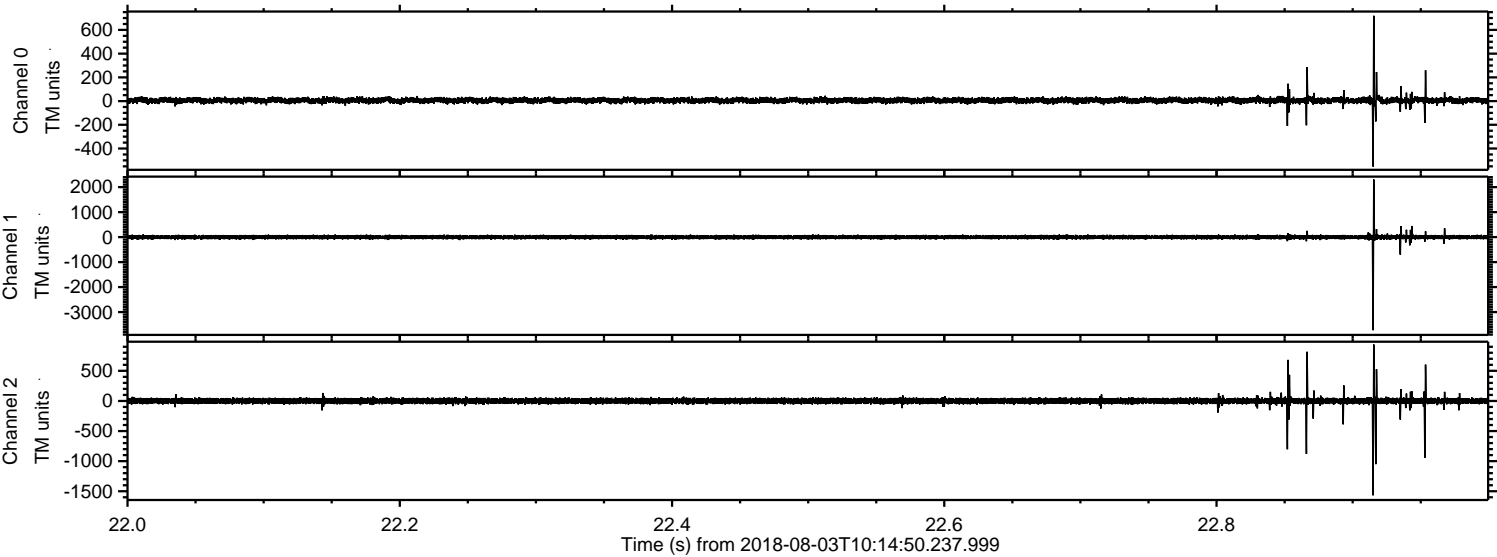
Processed Fri Aug 3 12:22:30 2018 by ELM ver.2012-10-06 from 001__elm20180803_101449__dat00.bin



Processed Fri Aug 3 12:22:31 2018 by ELM ver.2012-10-06 from 001__elm20180803_101449__dat00.bin



Processed Fri Aug 3 12:22:31 2018 by ELM ver.2012-10-06 from 001__elm20180803_101449__dat00.bin

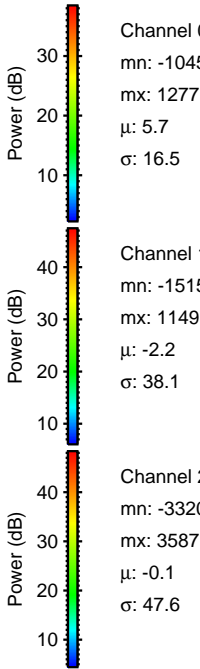
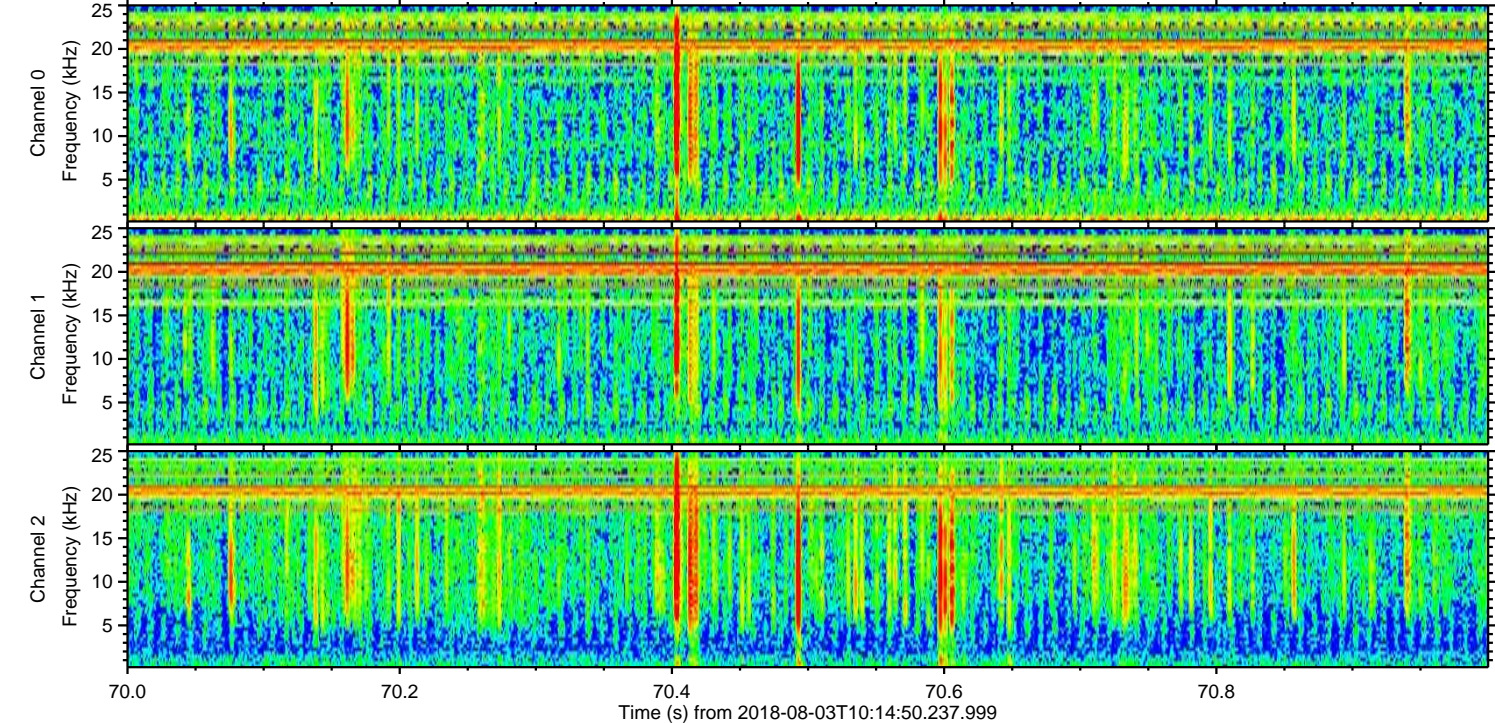
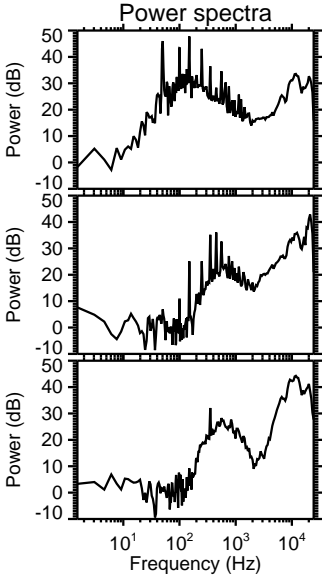
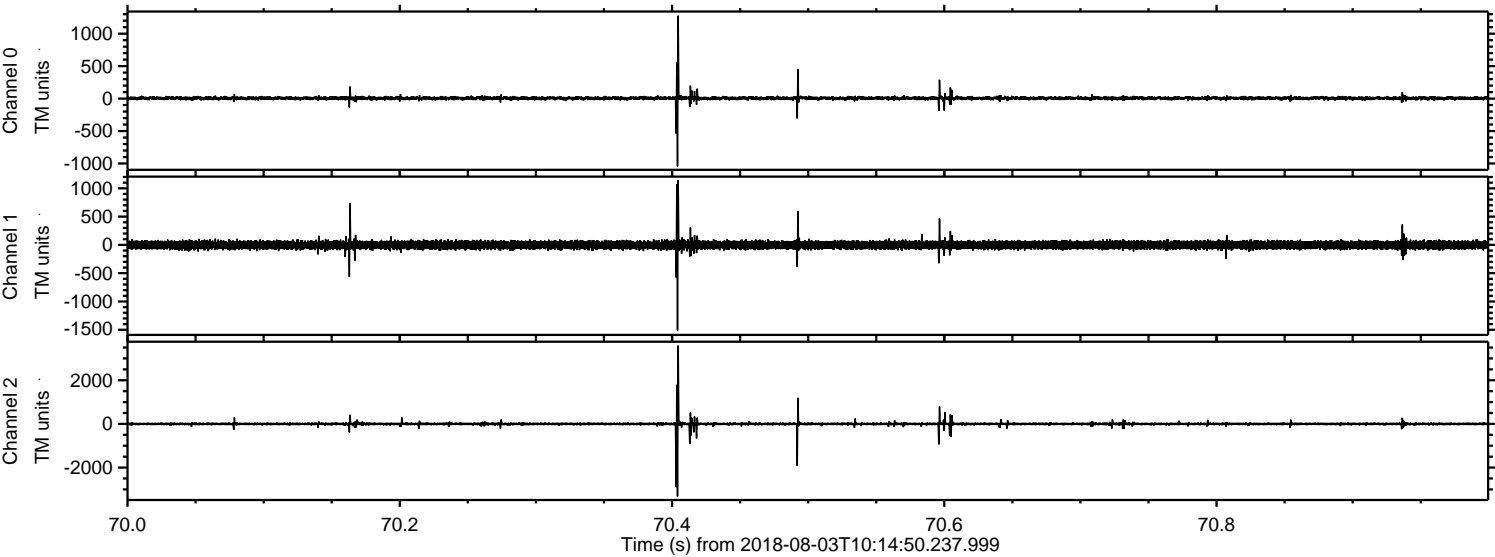


Channel 0
mn: -552
mx: 719
 μ : 5.6
 σ : 14.0

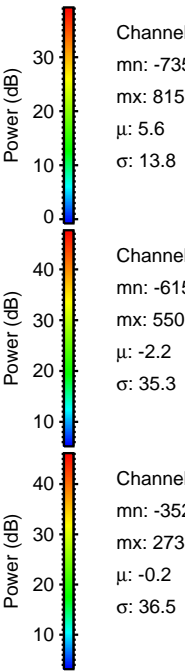
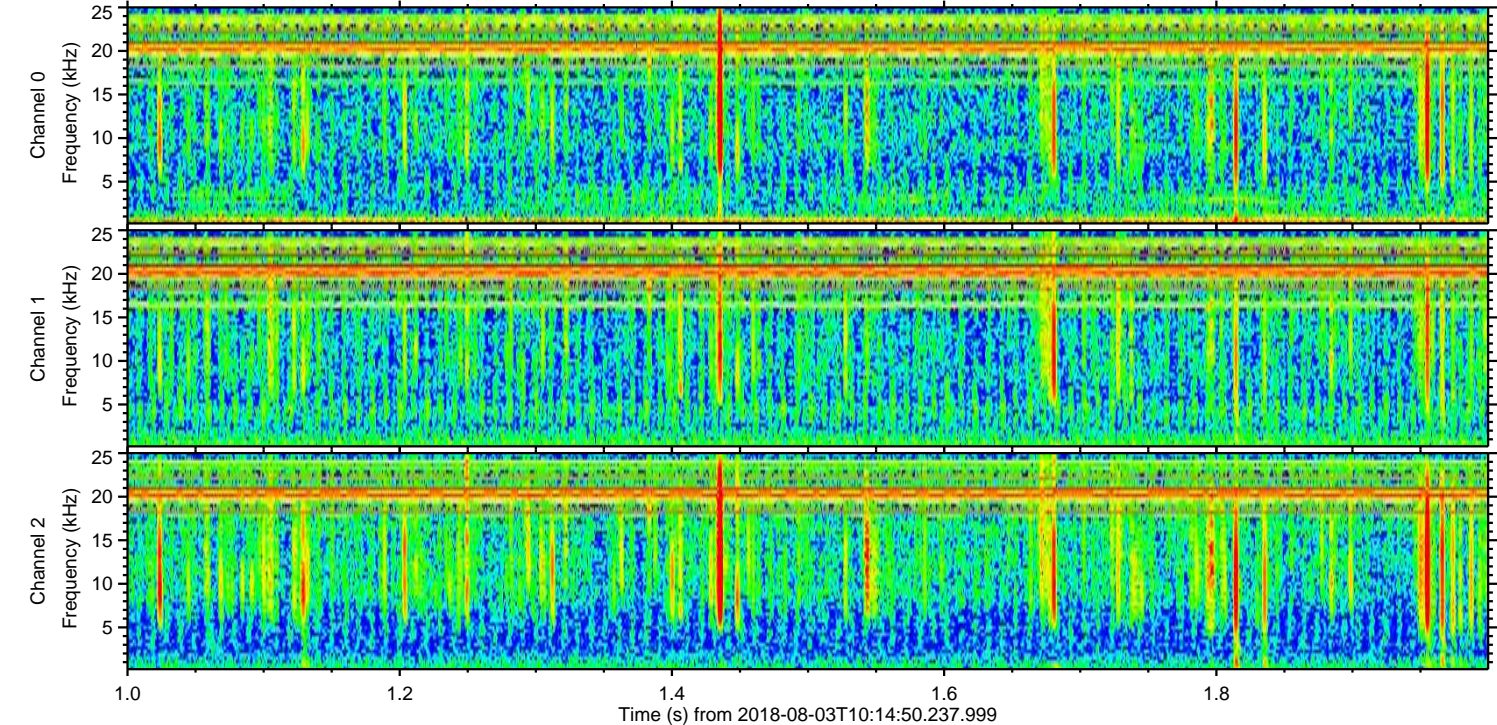
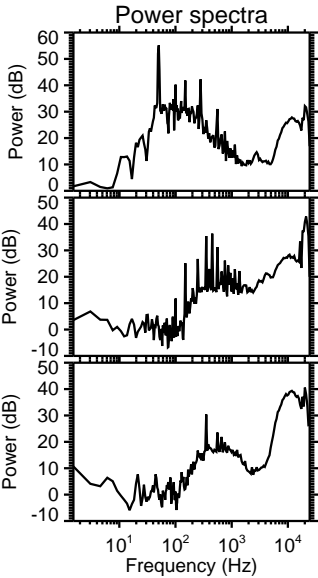
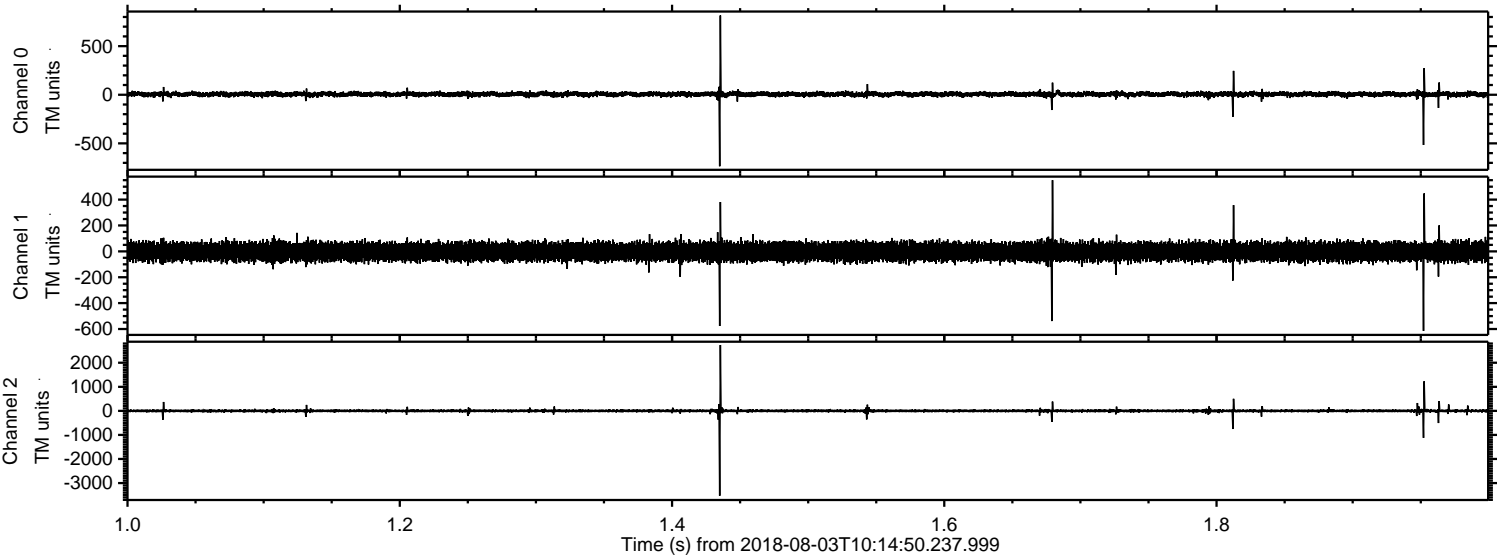
Channel 1
mn: -3727
mx: 2305
 μ : -2.2
 σ : 45.1

Channel 2
mn: -1567
mx: 937
 μ : -0.1
 σ : 29.7

Processed Fri Aug 3 12:22:32 2018 by ELM ver.2012-10-06 from 001__elm20180803_101449__dat00.bin



Processed Fri Aug 3 12:22:33 2018 by ELM ver.2012-10-06 from 001__elm20180803_101449__dat00.bin



Channel 0
mn: -735
mx: 815
 μ : 5.6
 σ : 13.8

Channel 1
mn: -615
mx: 550
 μ : -2.2
 σ : 35.3

Channel 2
mn: -3529
mx: 2738
 μ : -0.2
 σ : 36.5

Processed Fri Aug 3 12:22:33 2018 by ELM ver.2012-10-06 from 001__elm20180803_101449__dat00.bin

