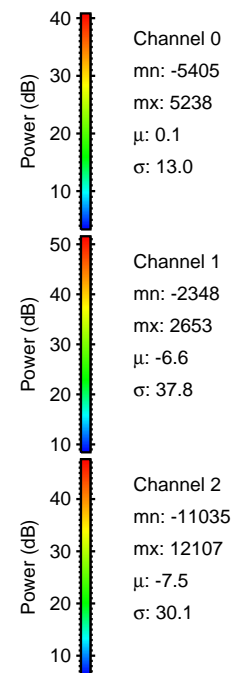
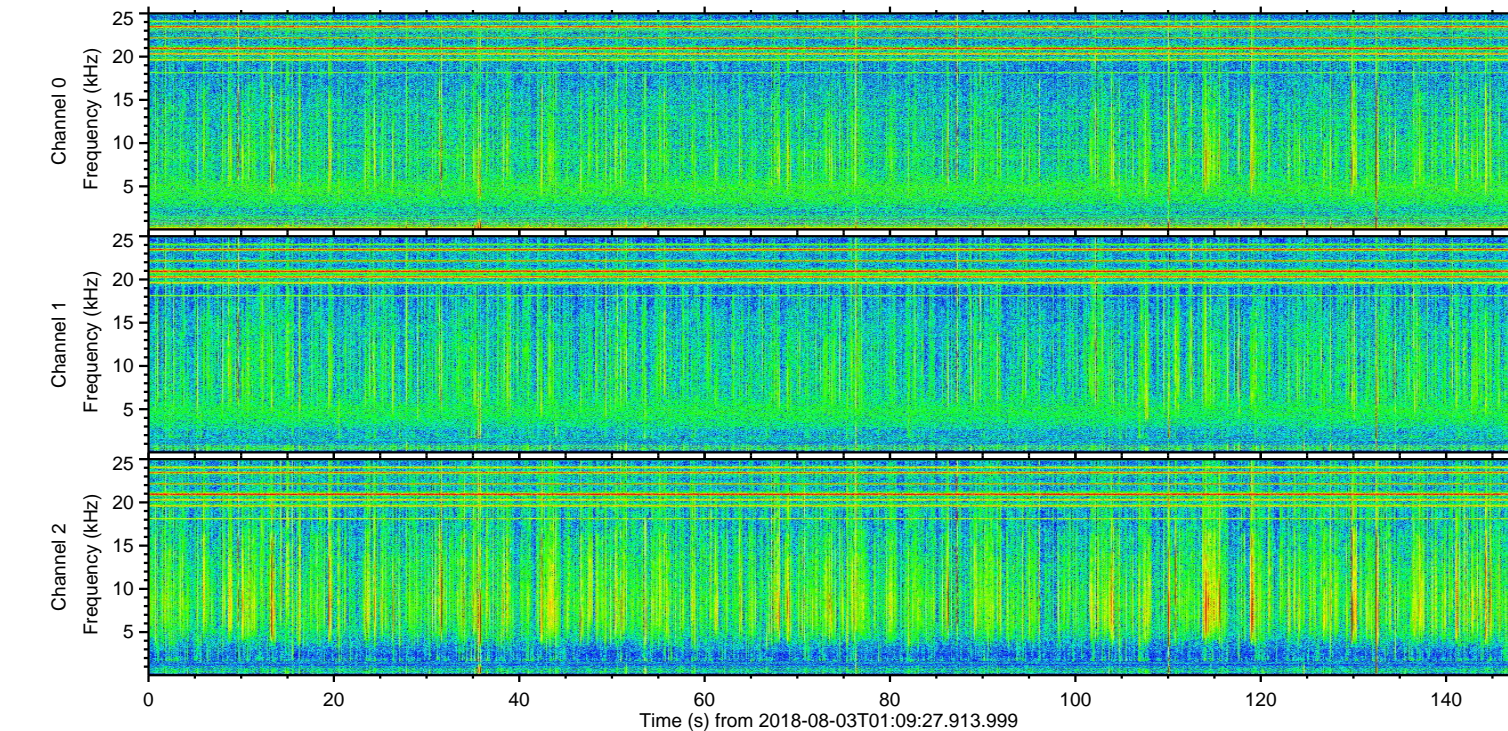
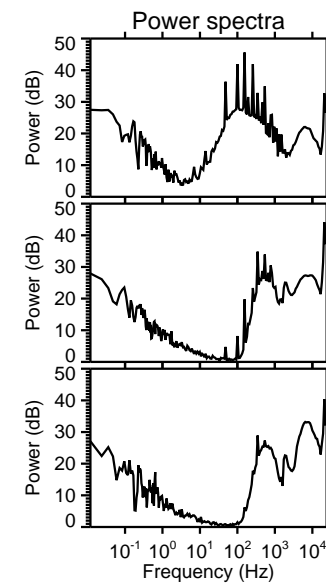
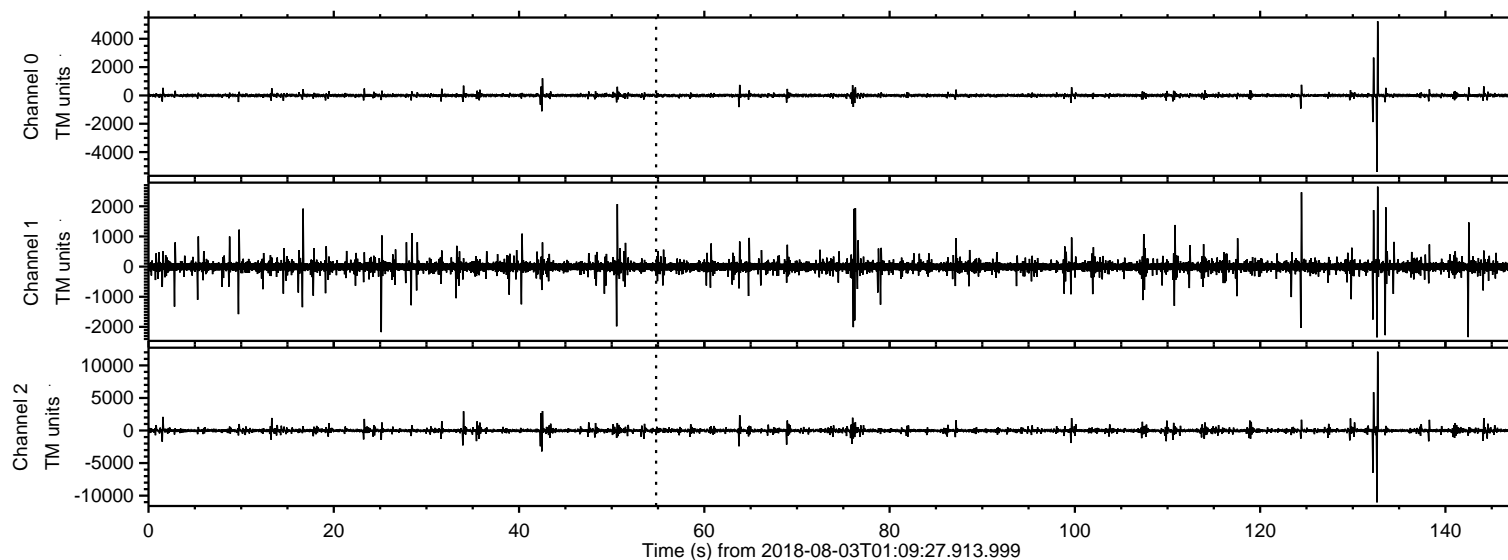


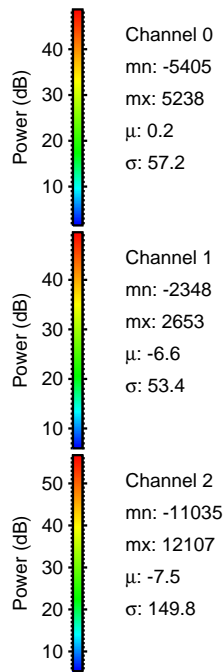
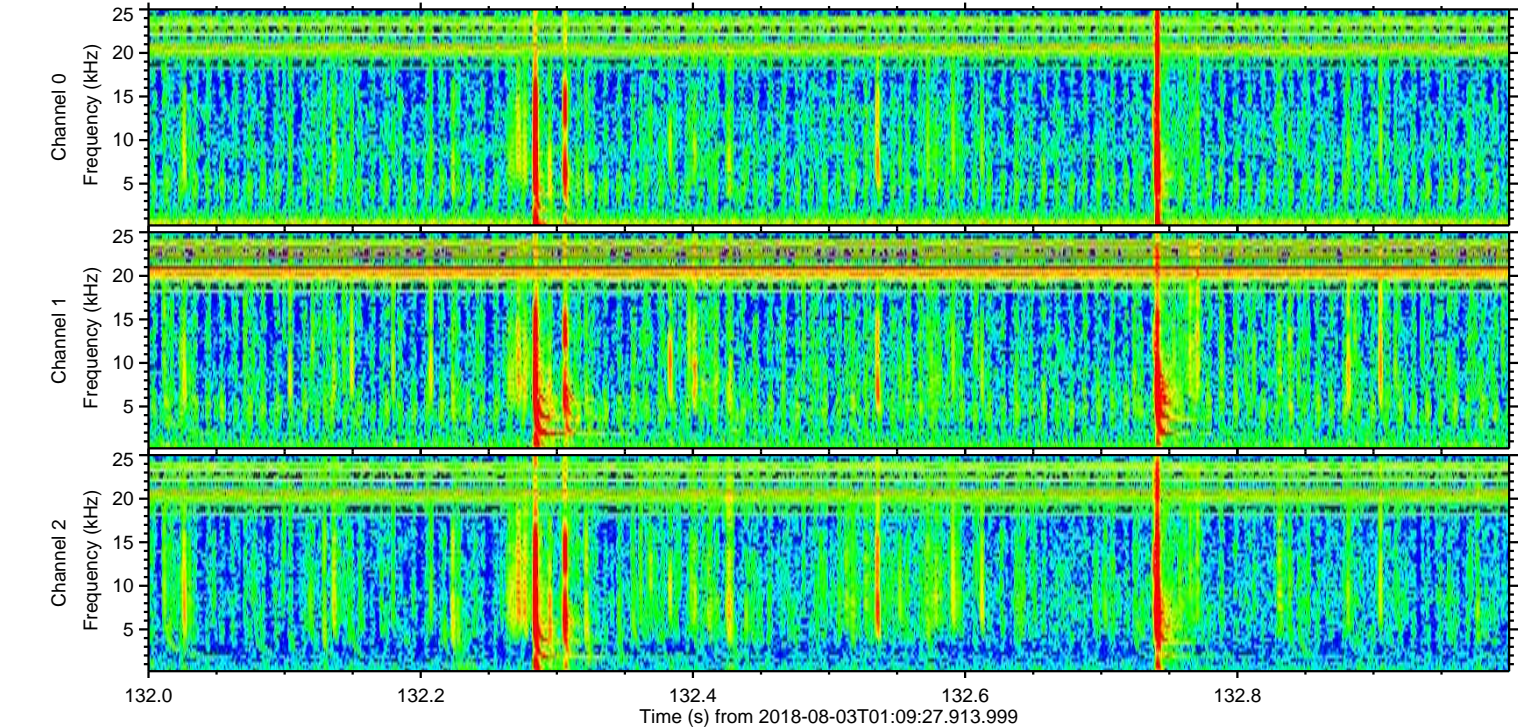
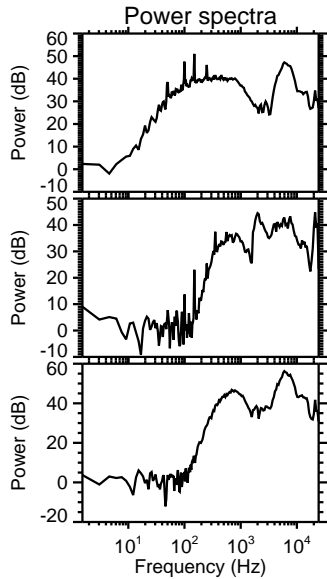
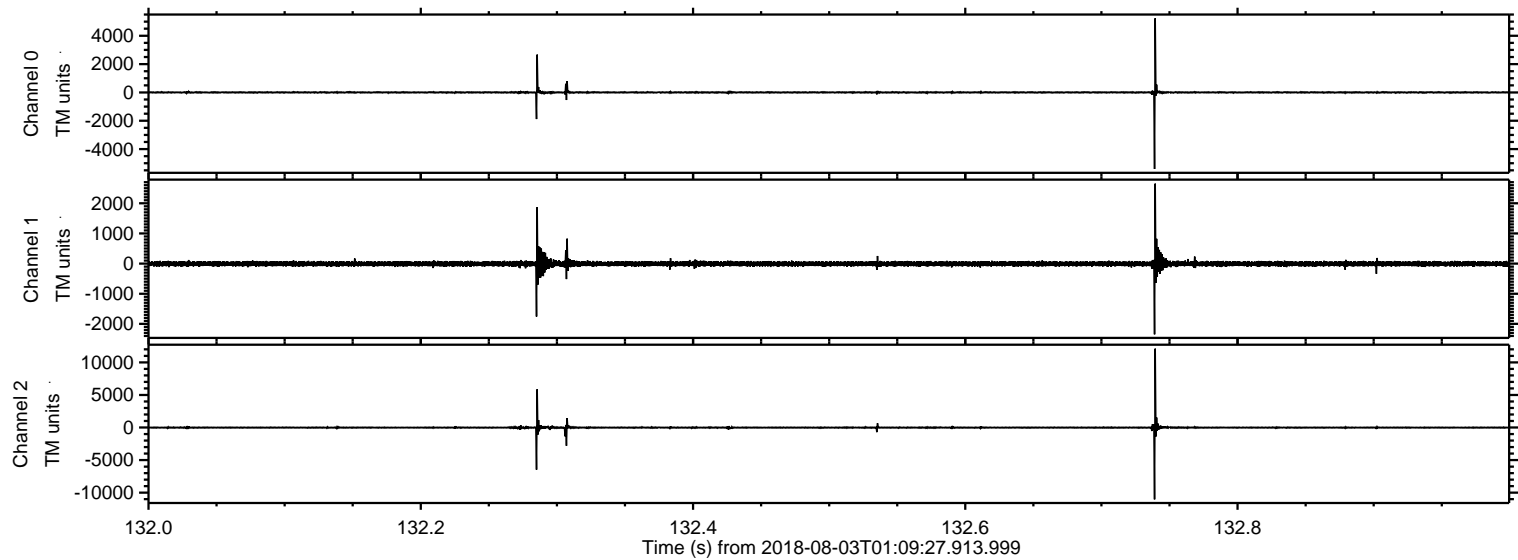
ELMAVAN 3D WAVEFORMS (Measured data sampled at 50 kHz) 50999 packets of 144 samples from 2018-08-03T01:09:27.913.999.

Processed Fri Aug 3 03:17:02 2018 by ELM ver.2012-10-06 from 001__elm20180803_010926__dat00.bin

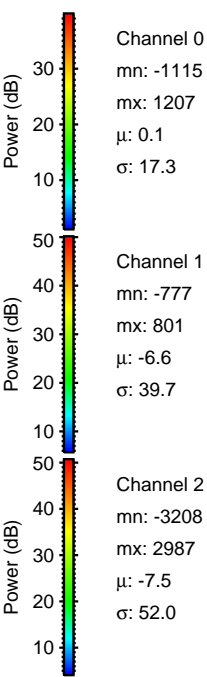
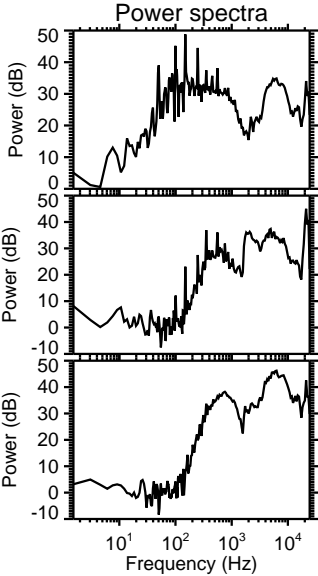
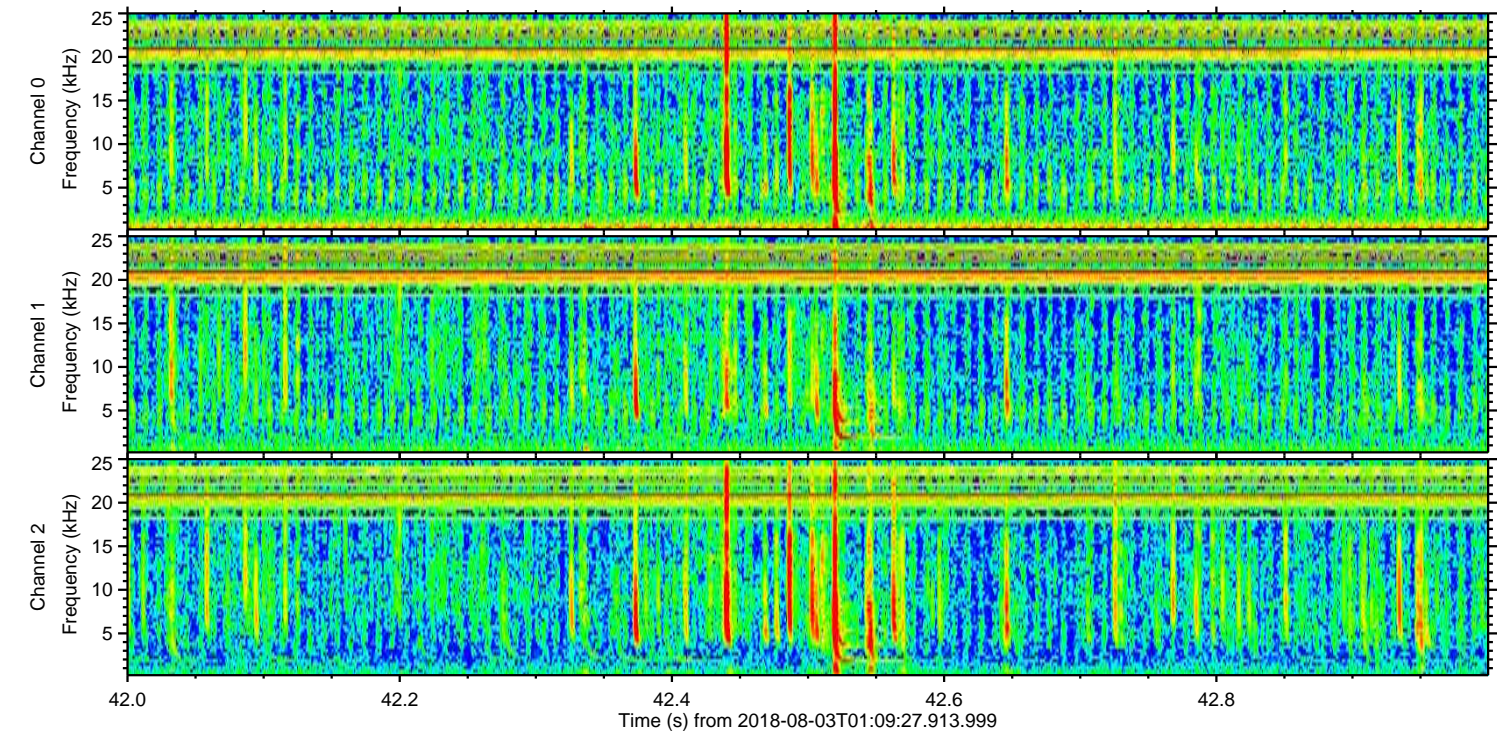
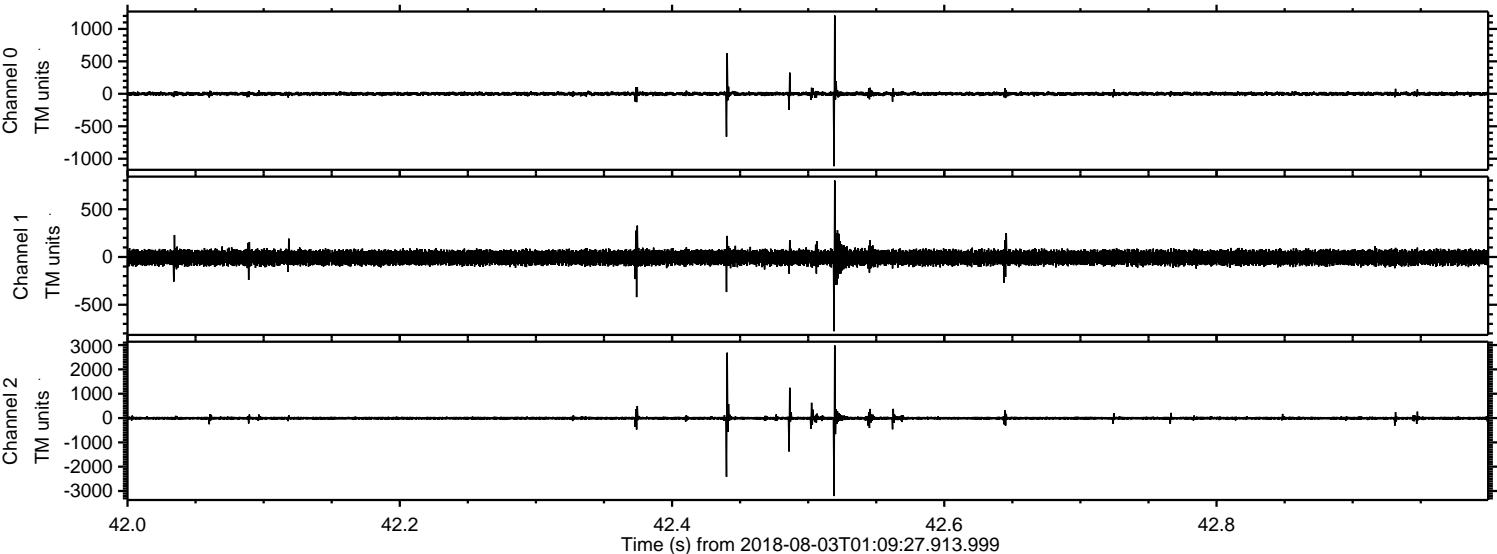


ELMAVAN 3D WAVEFORMS (Measured data sampled at 50 kHz) 50999 packets of 144 samples from 2018-08-03T01:09:27.913.999. Part 133/147

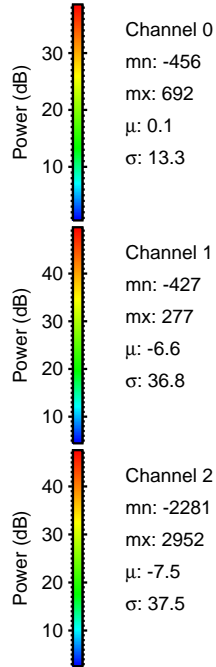
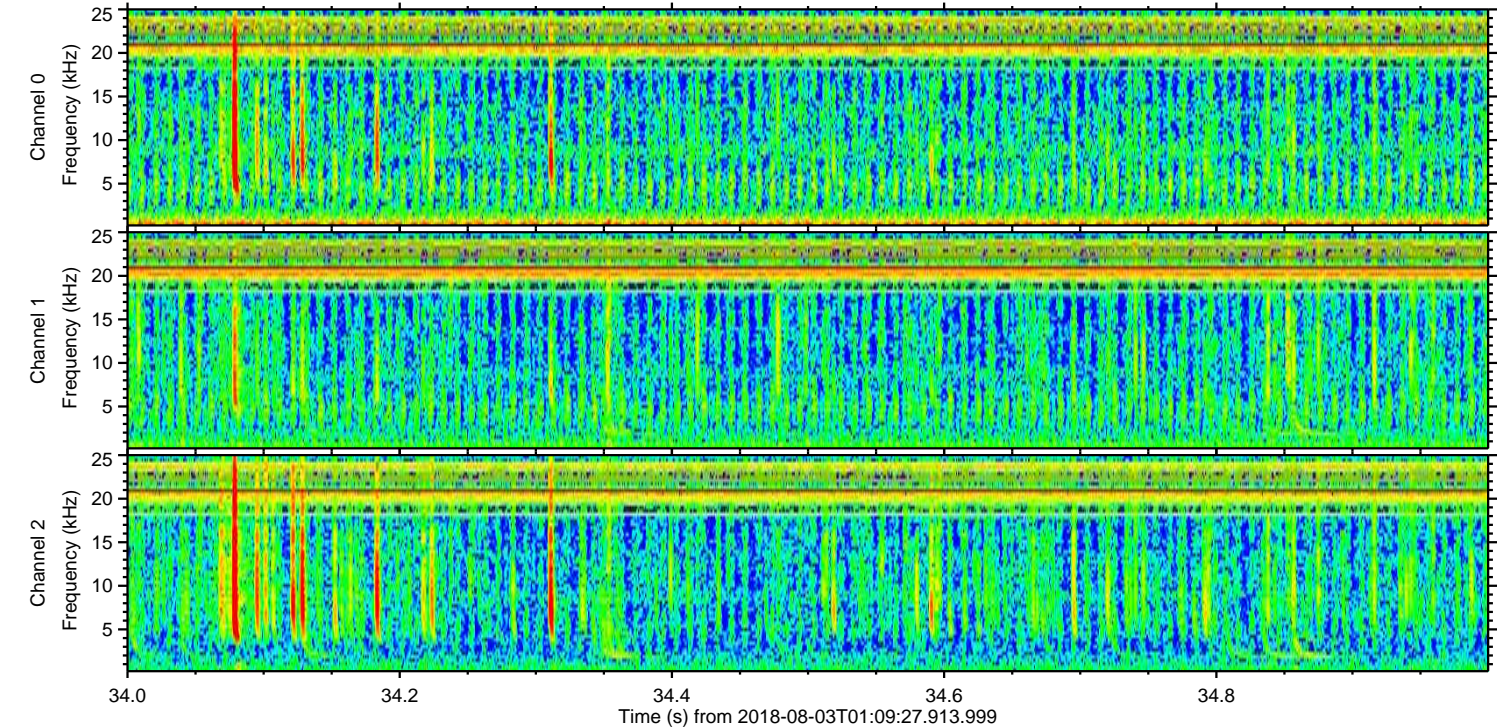
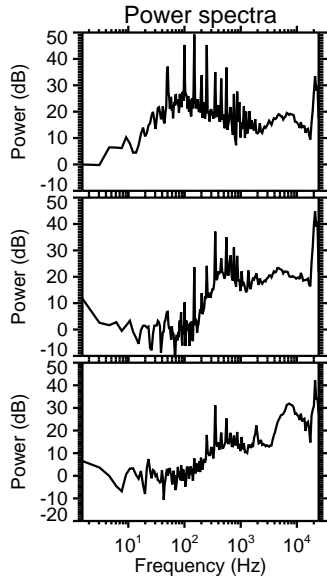
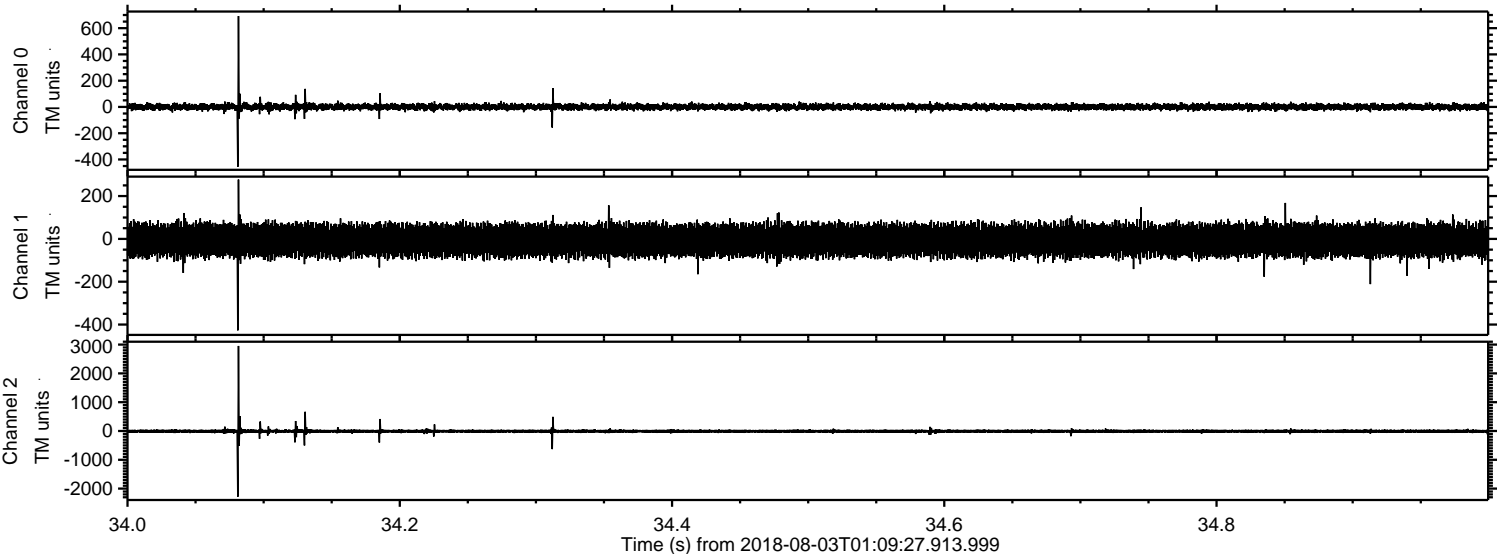
Processed Fri Aug 3 03:17:07 2018 by ELM ver.2012-10-06 from 001__elm20180803_010926__dat00.bin



Processed Fri Aug 3 03:17:08 2018 by ELM ver.2012-10-06 from 001__elm20180803_010926__dat00.bin

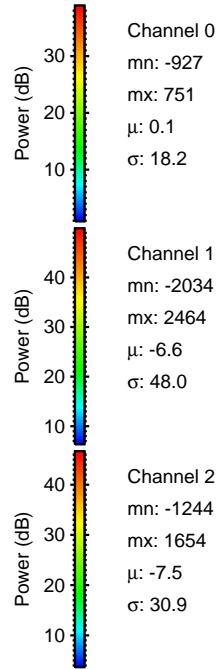
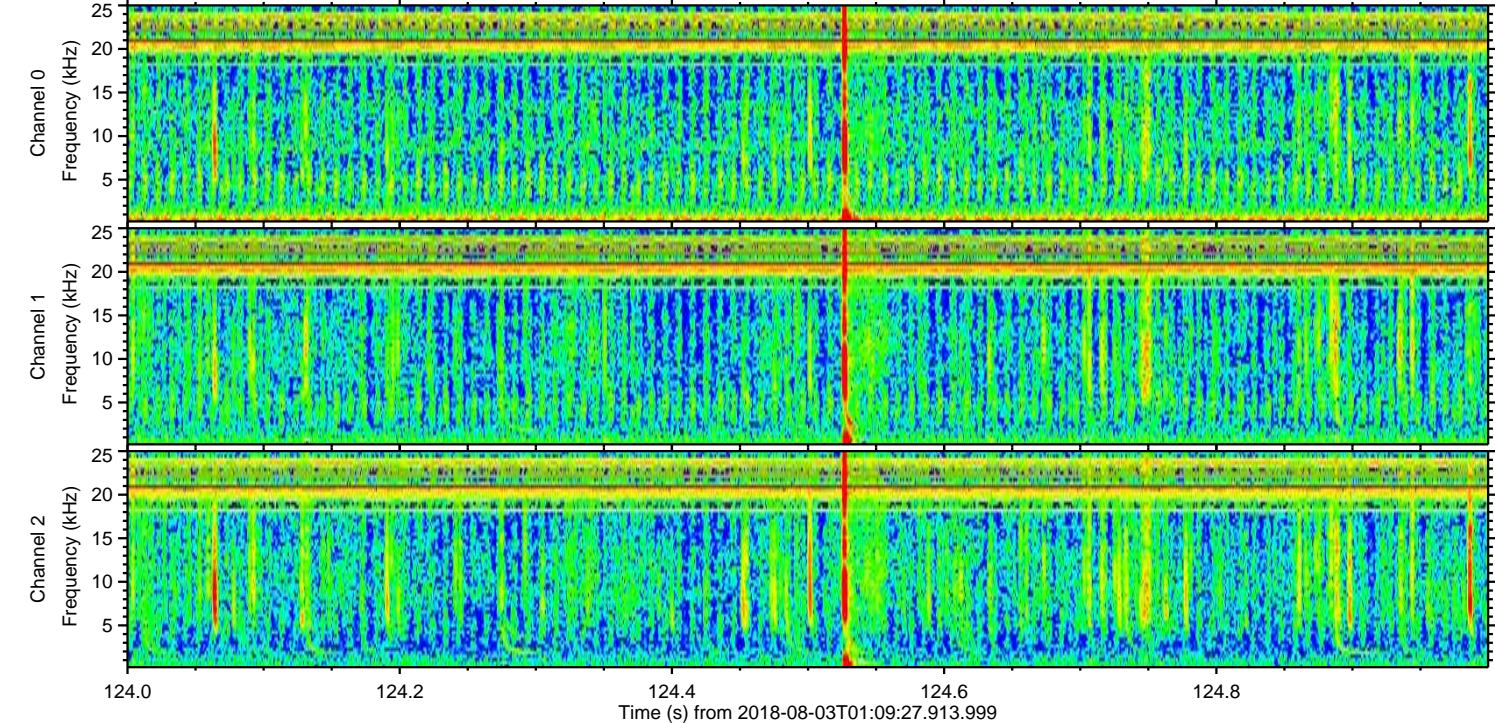
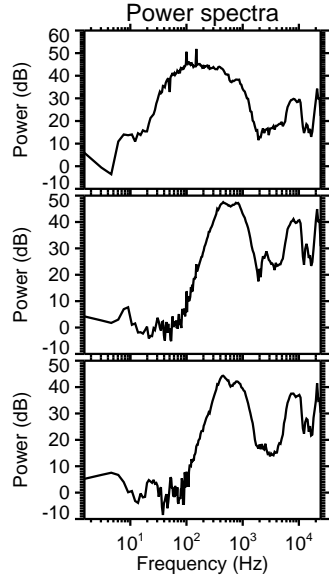
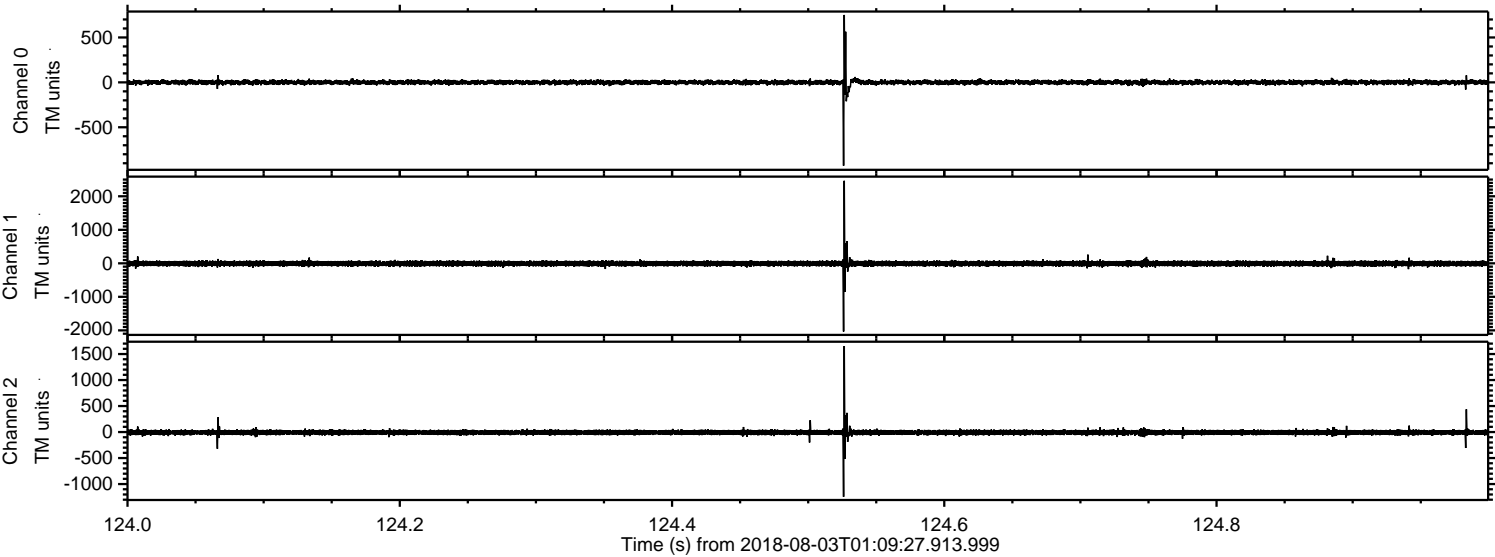


Processed Fri Aug 3 03:17:09 2018 by ELM ver.2012-10-06 from 001__elm20180803_010926__dat00.bin

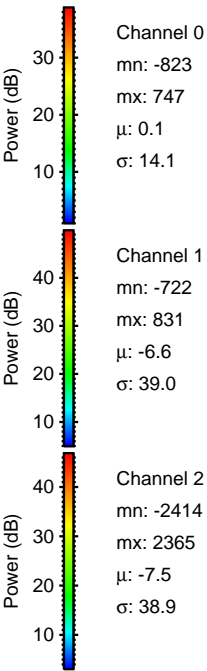
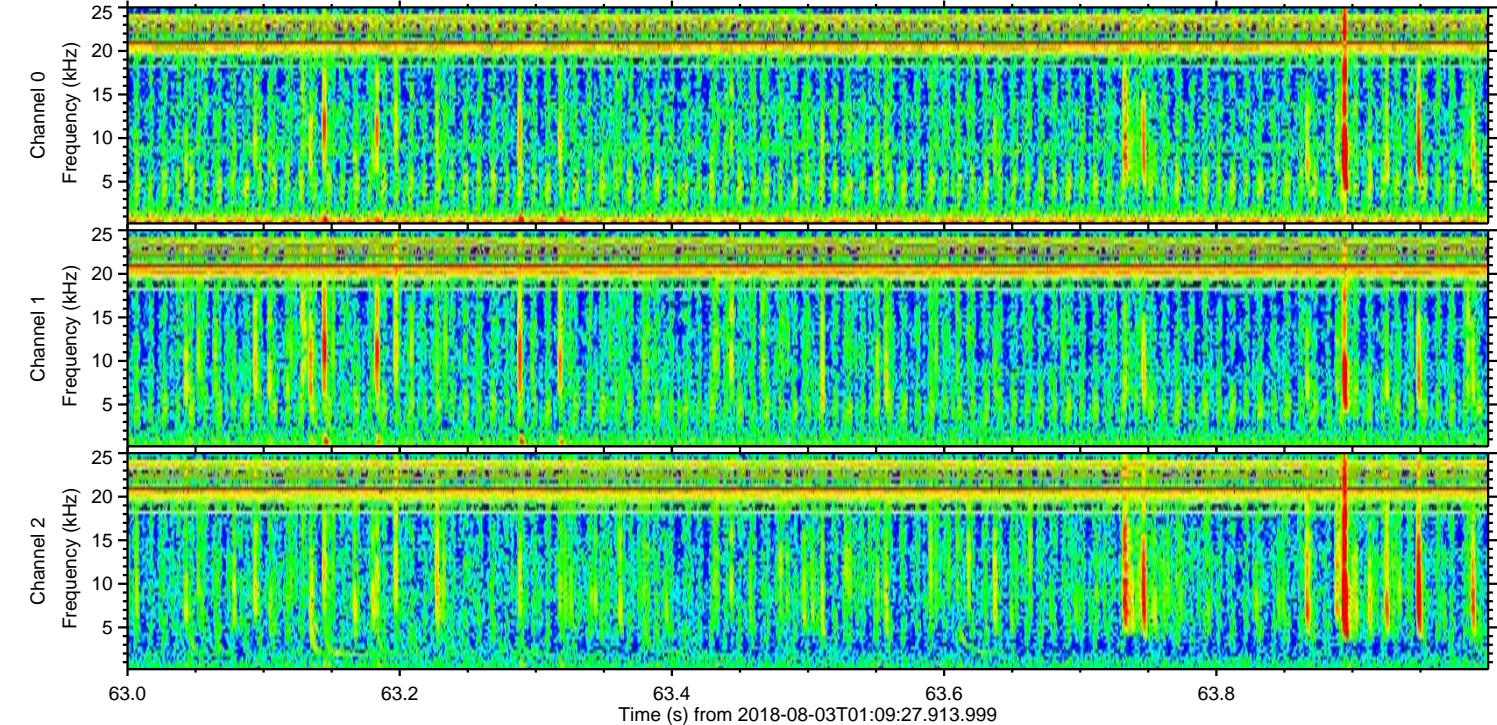
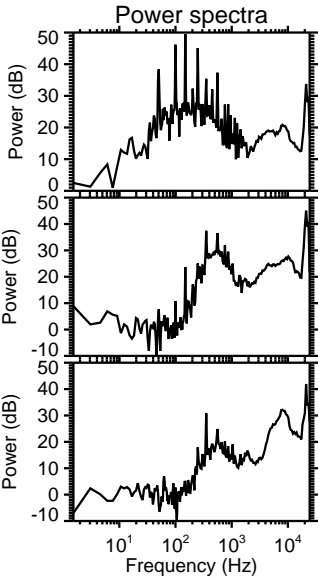
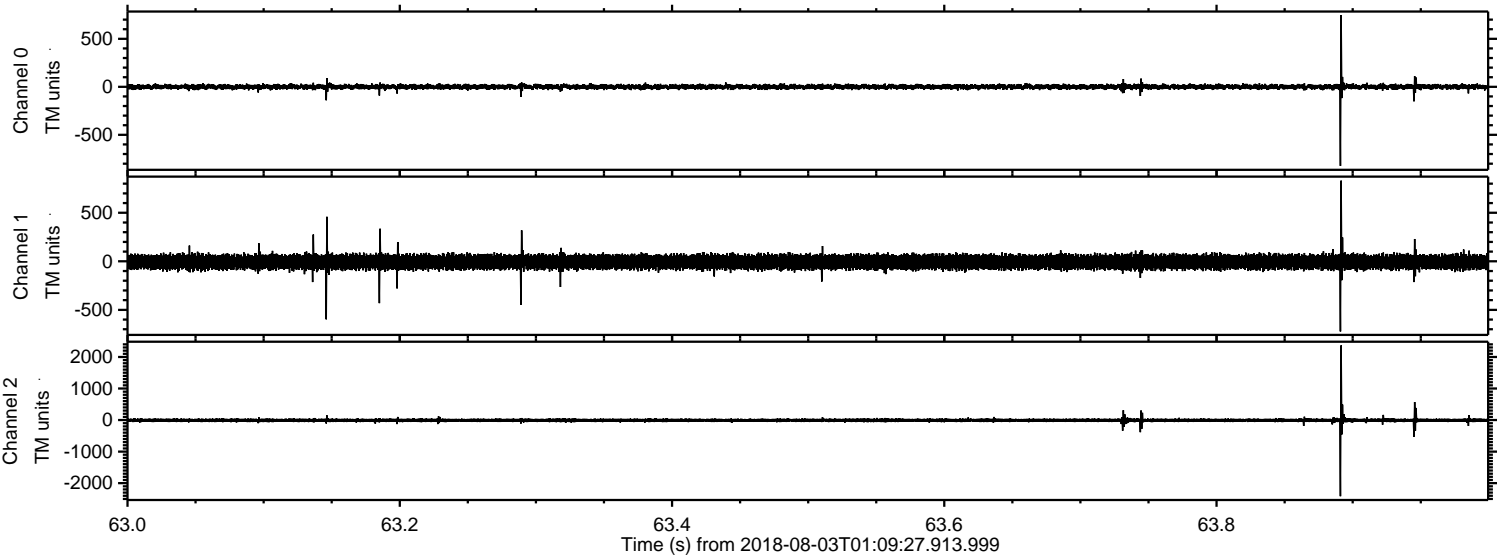


ELMAVAN 3D WAVEFORMS (Measured data sampled at 50 kHz) 50999 packets of 144 samples from 2018-08-03T01:09:27.913.999. Part 125/147

Processed Fri Aug 3 03:17:09 2018 by ELM ver.2012-10-06 from 001__elm20180803_010926__dat00.bin

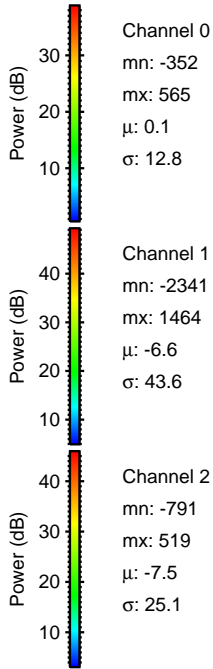
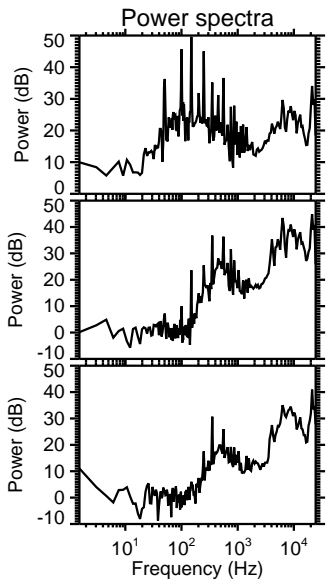
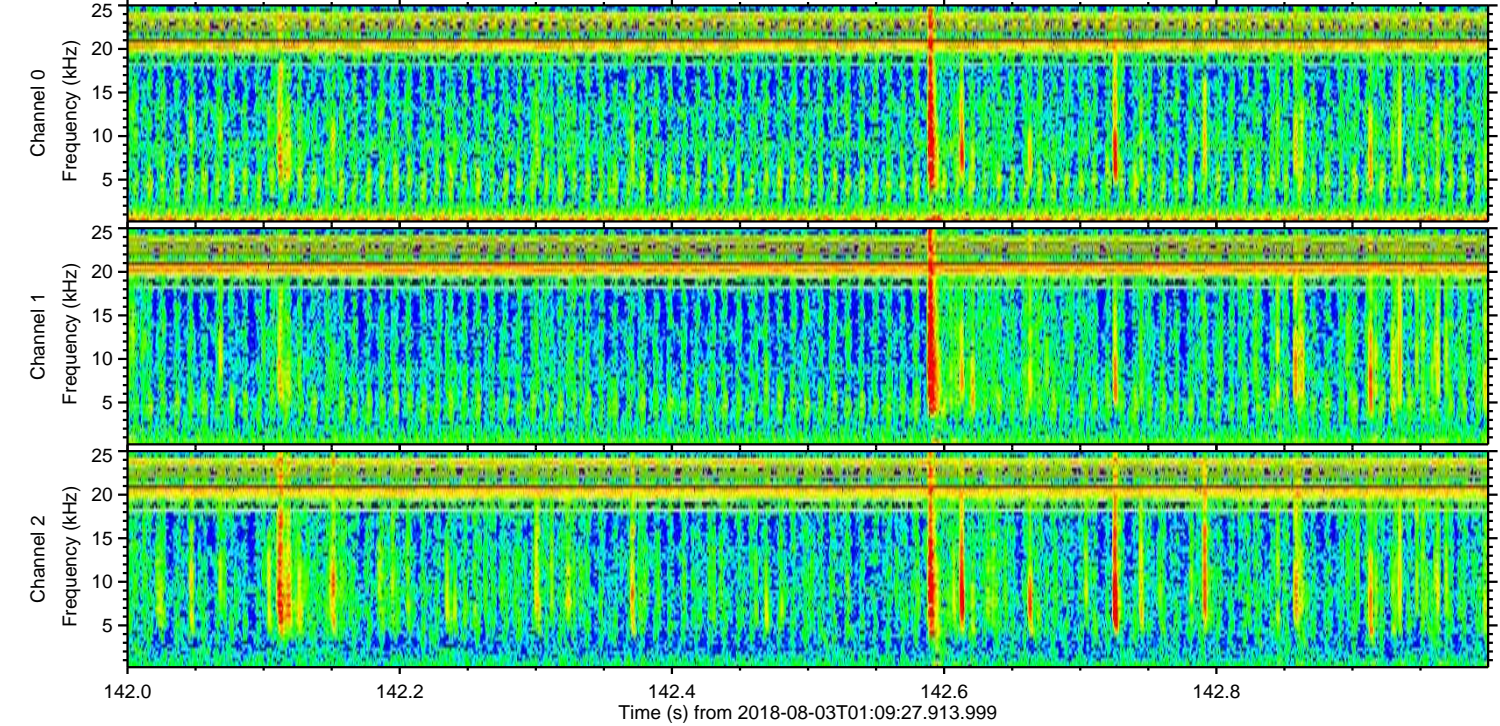
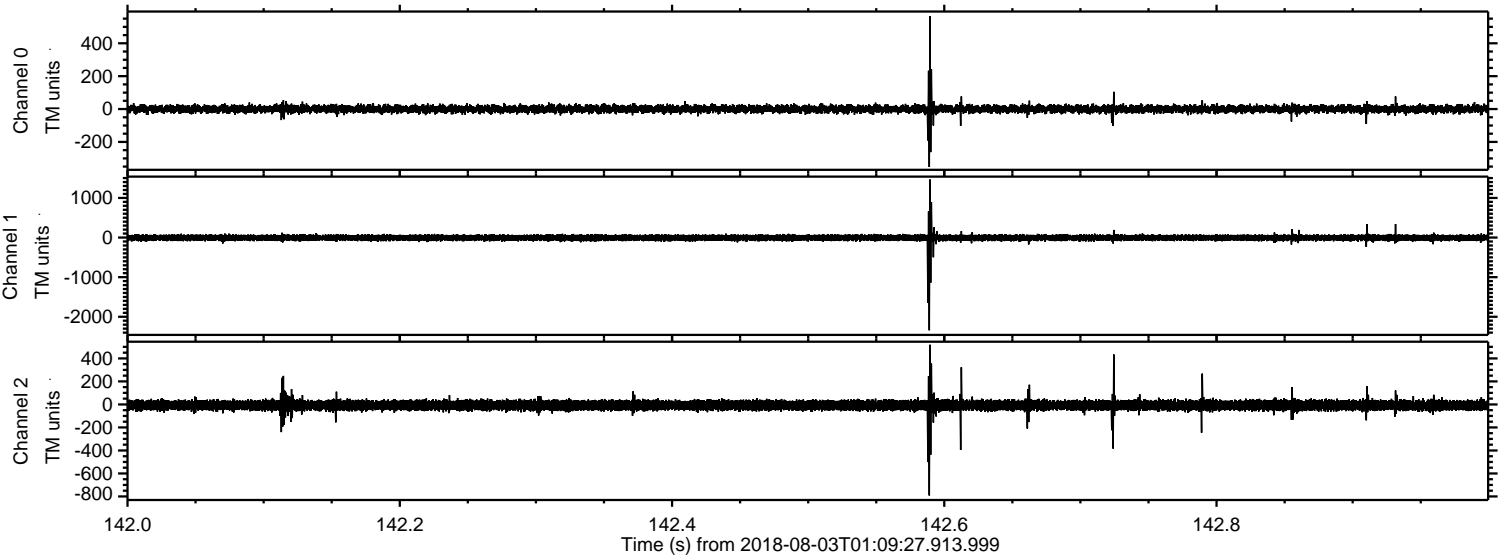


Processed Fri Aug 3 03:17:10 2018 by ELM ver.2012-10-06 from 001__elm20180803_010926__dat00.bin



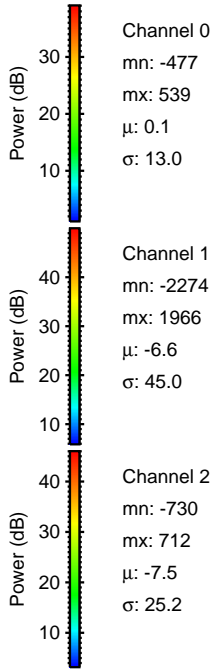
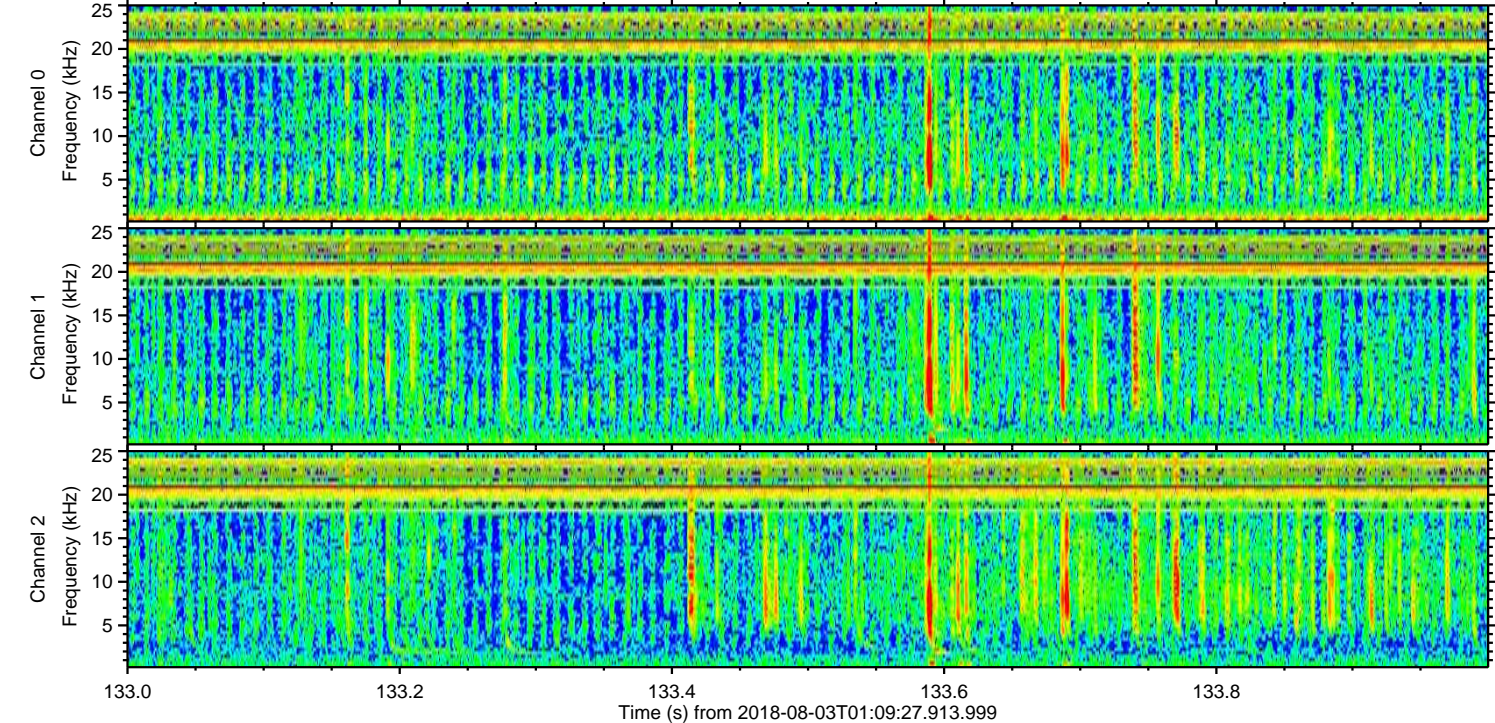
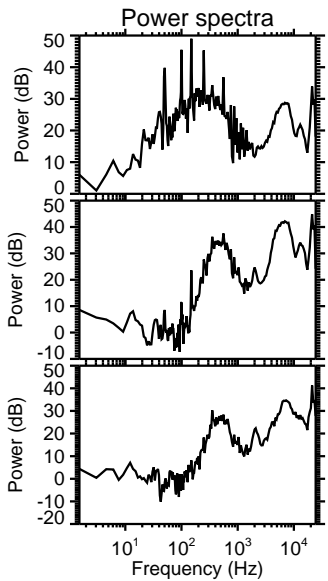
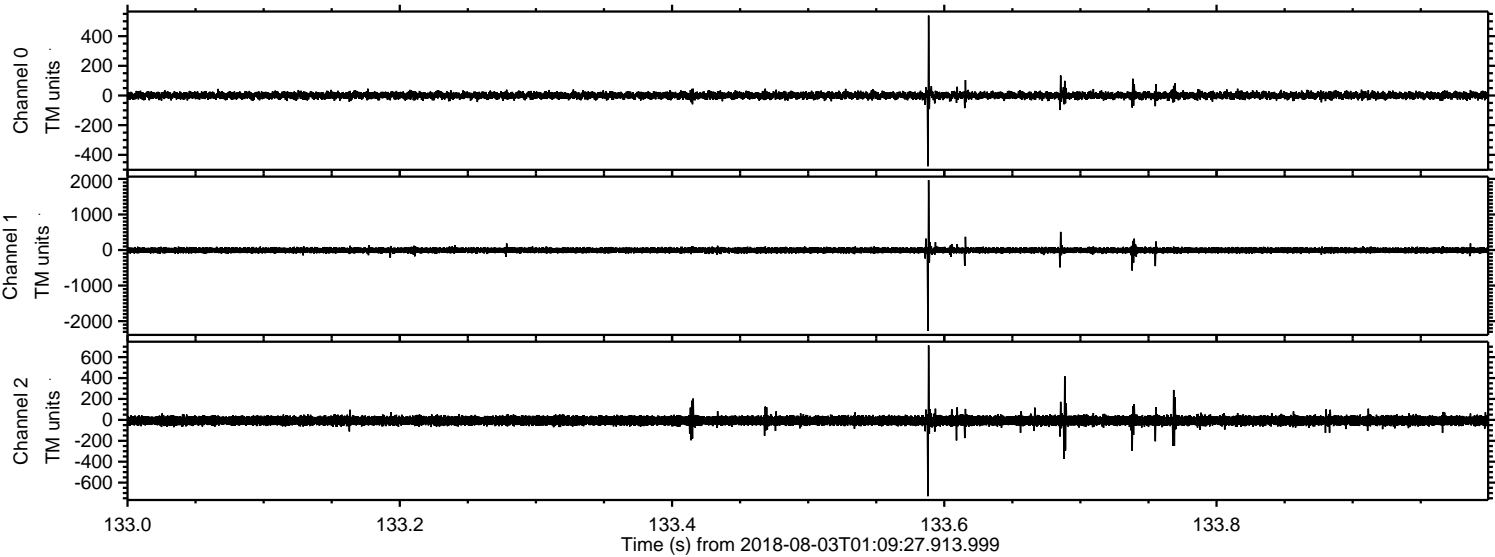
ELMAVAN 3D WAVEFORMS (Measured data sampled at 50 kHz) 50999 packets of 144 samples from 2018-08-03T01:09:27.913.999. Part 143/147

Processed Fri Aug 3 03:17:11 2018 by ELM ver.2012-10-06 from 001__elm20180803_010926__dat00.bin

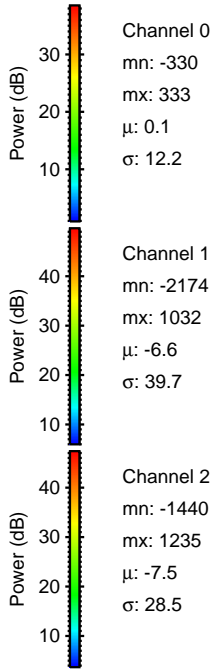
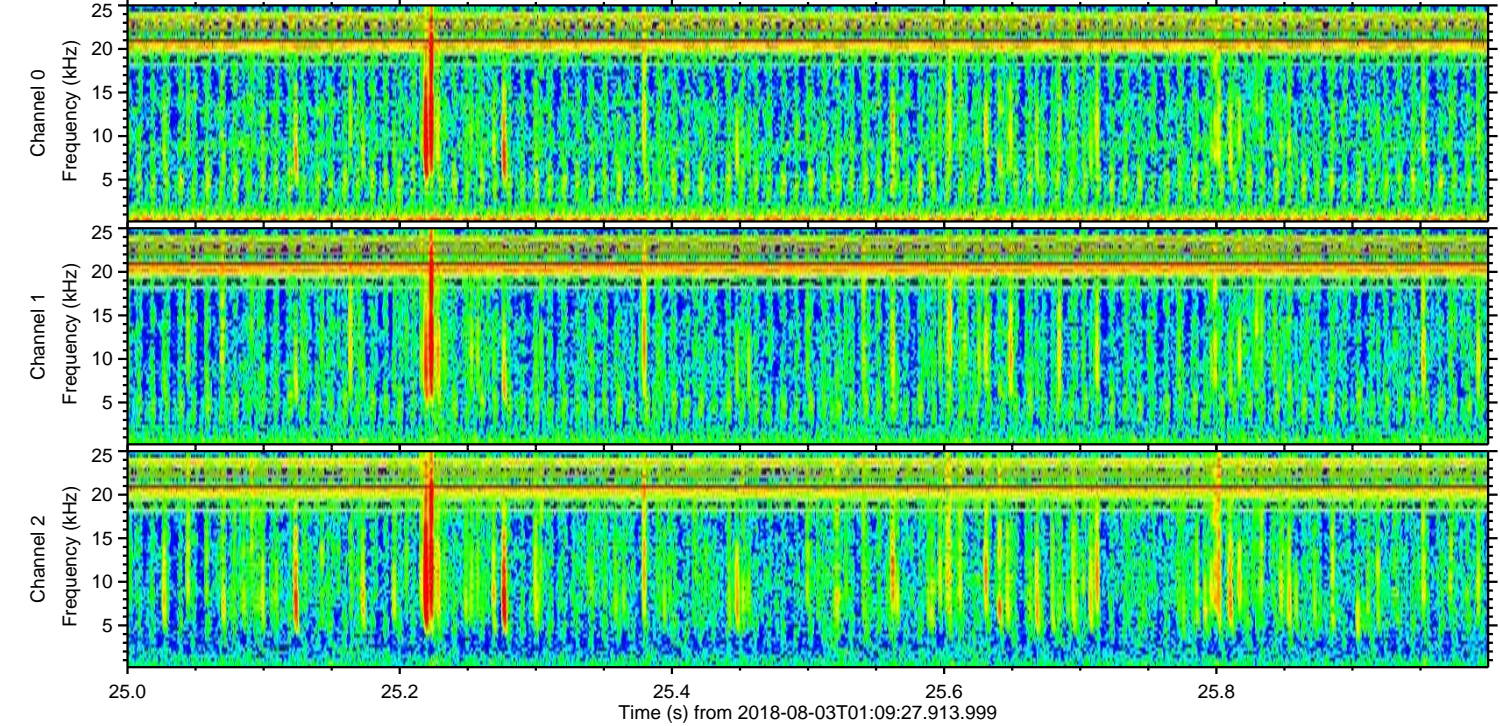
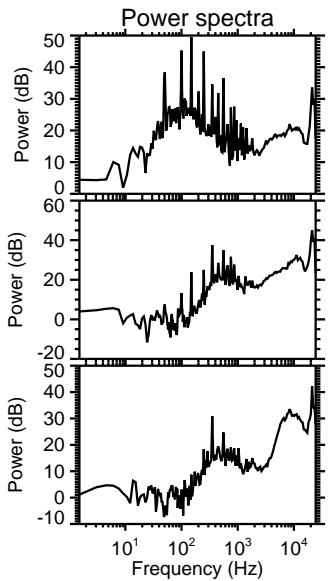
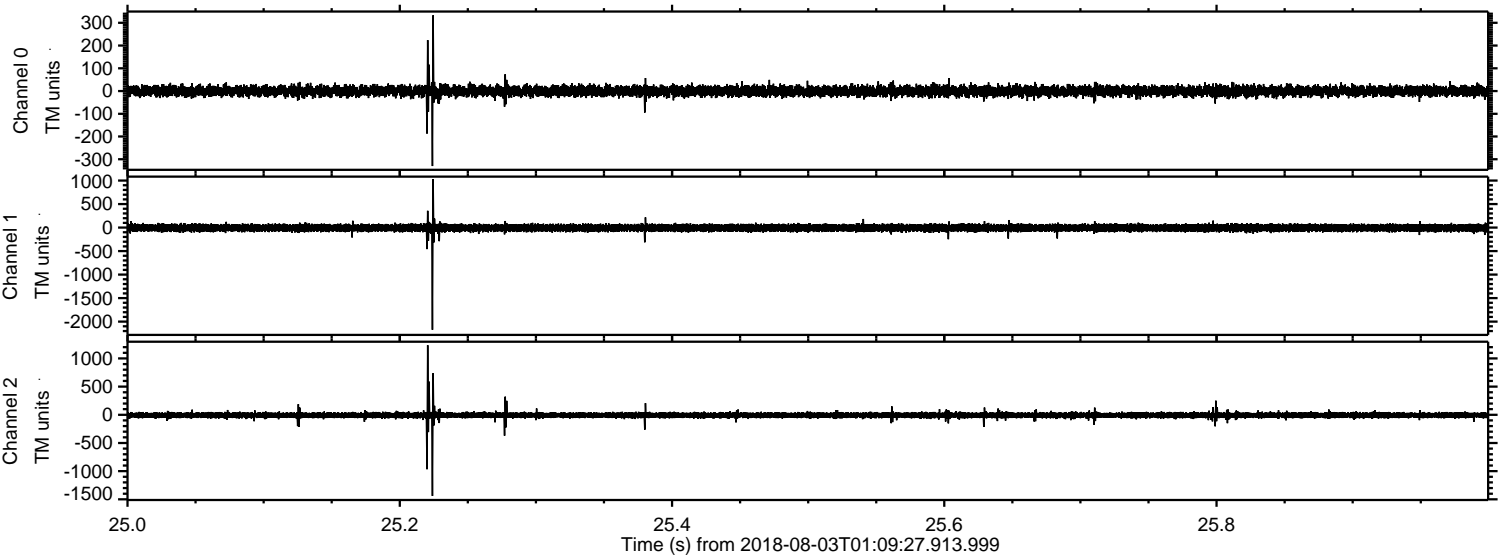


ELMAVAN 3D WAVEFORMS (Measured data sampled at 50 kHz) 50999 packets of 144 samples from 2018-08-03T01:09:27.913.999. Part 134/147

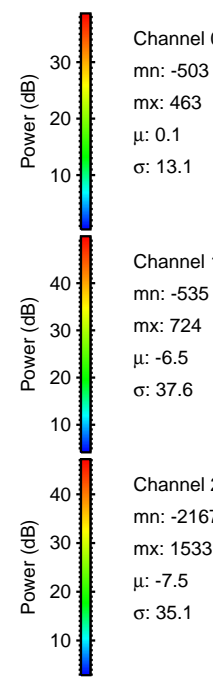
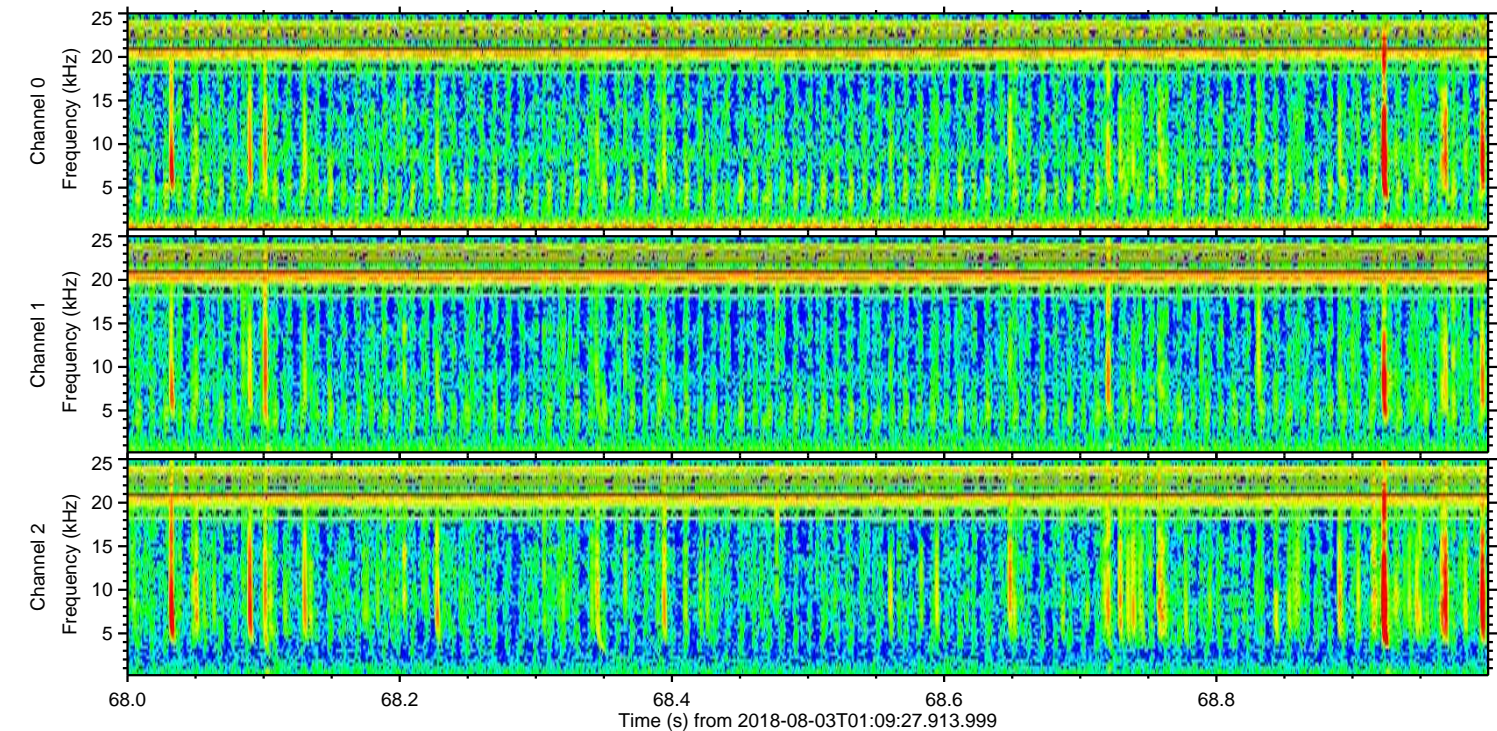
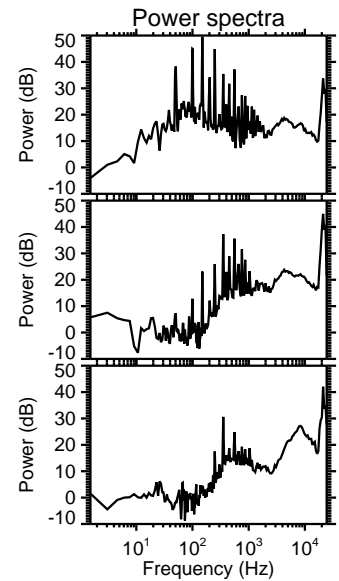
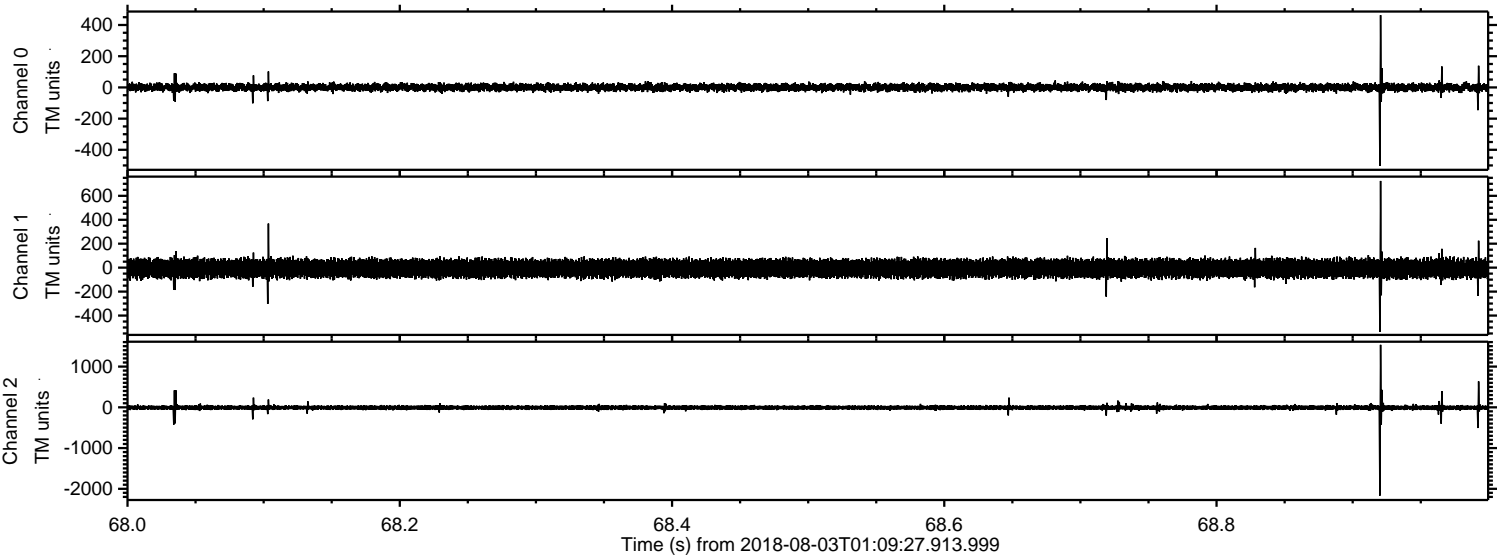
Processed Fri Aug 3 03:17:11 2018 by ELM ver.2012-10-06 from 001__elm20180803_010926__dat00.bin



Processed Fri Aug 3 03:17:12 2018 by ELM ver.2012-10-06 from 001__elm20180803_010926__dat00.bin



Processed Fri Aug 3 03:17:13 2018 by ELM ver.2012-10-06 from 001__elm20180803_010926__dat00.bin



Channel 0
mn: -503
mx: 463
 μ : 0.1
 σ : 13.1

Channel 1
mn: -535
mx: 724
 μ : -6.5
 σ : 37.6

Channel 2
mn: -2167
mx: 1533
 μ : -7.5
 σ : 35.1

