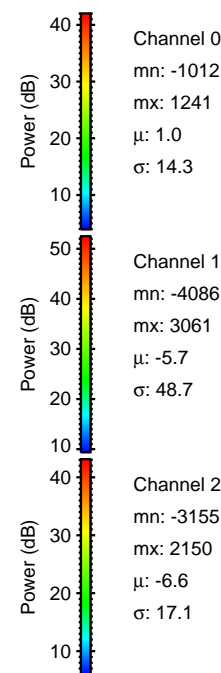
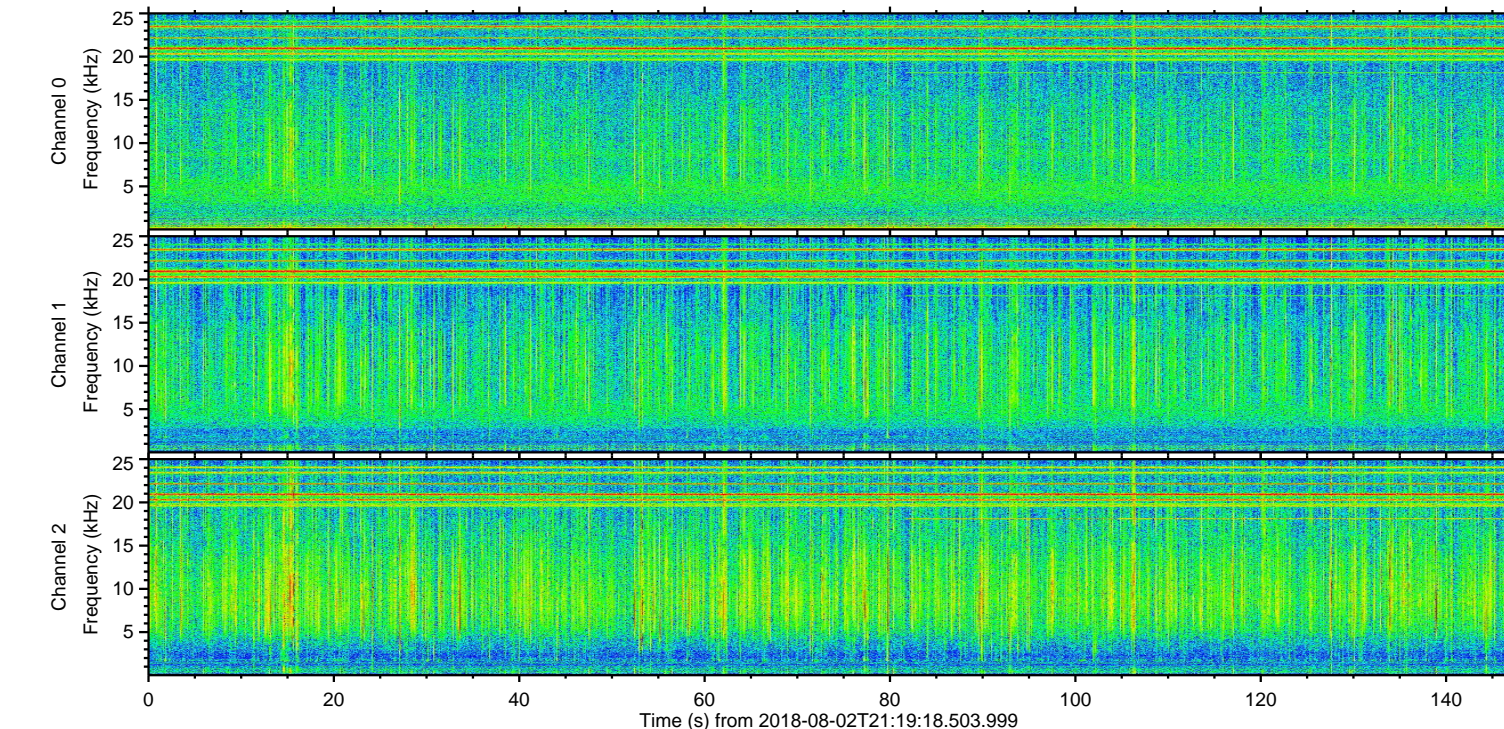
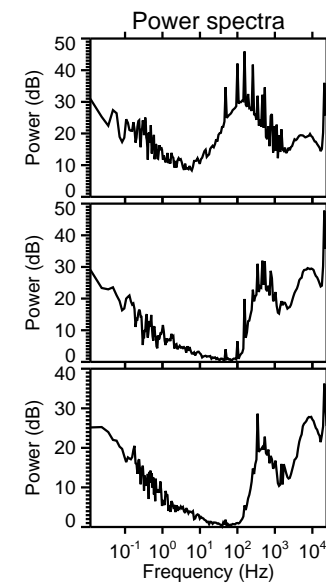
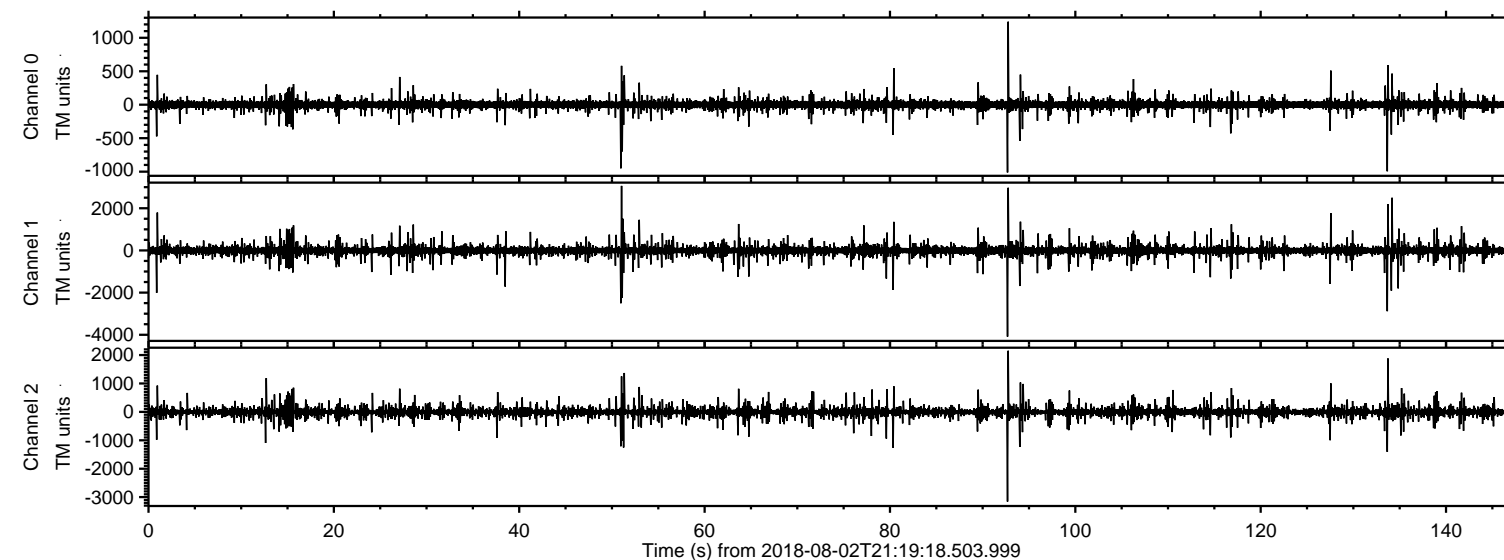
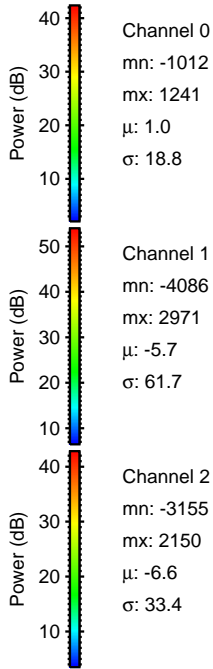
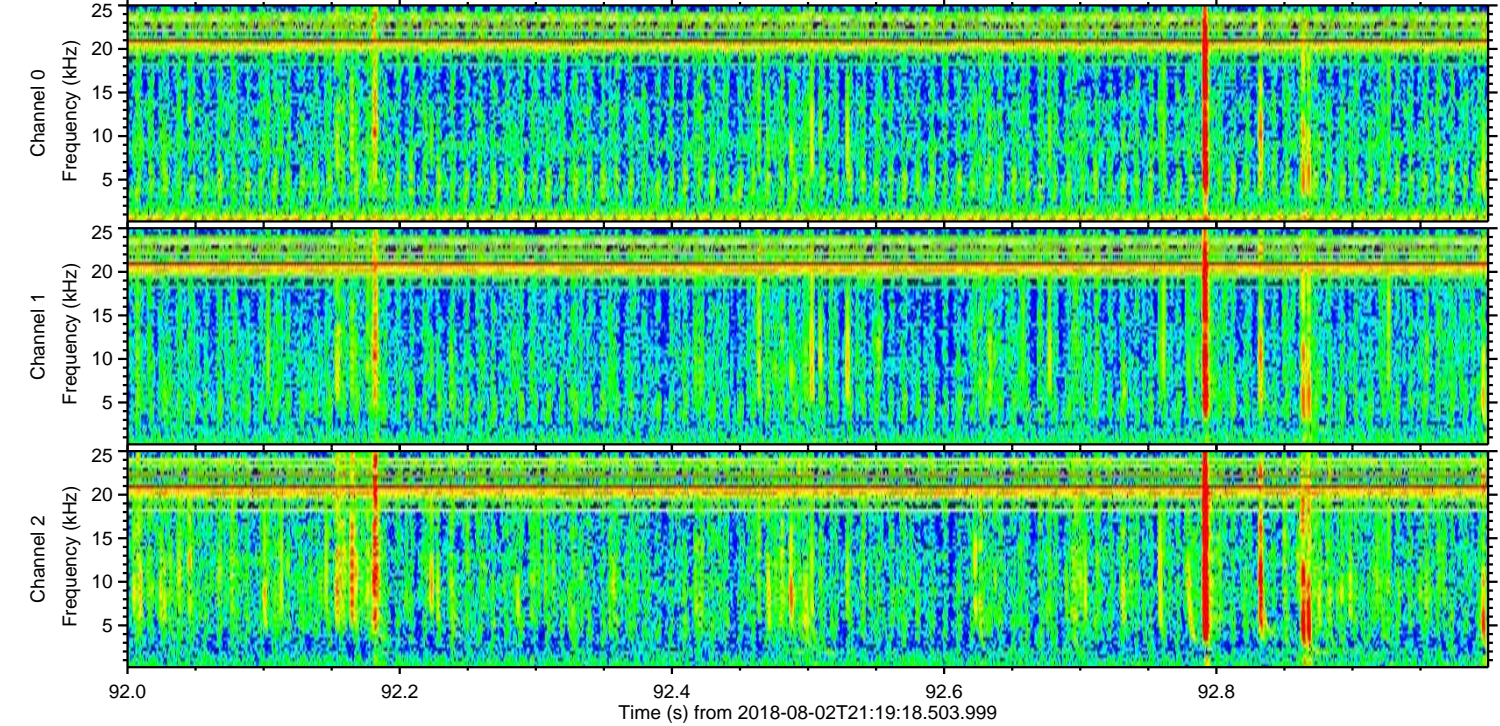
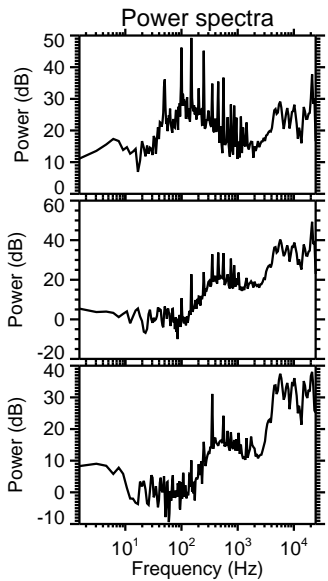
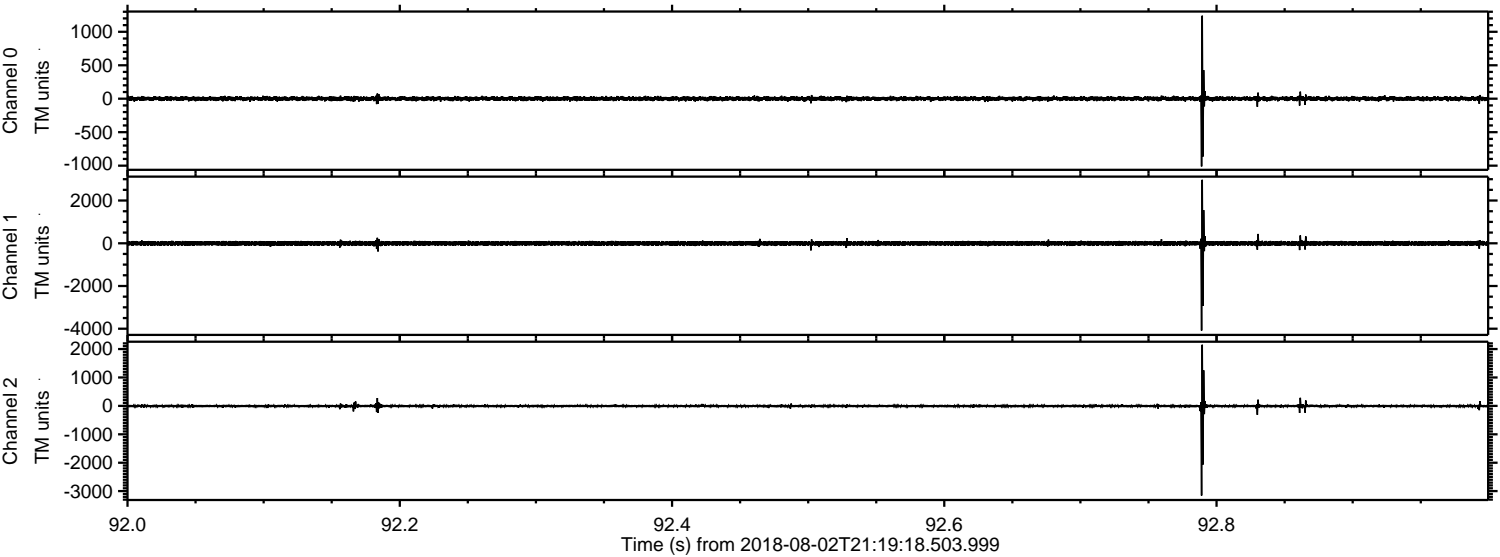


ELMAVAN 3D WAVEFORMS (Measured data sampled at 50 kHz) 51000 packets of 144 samples from 2018-08-02T21:19:18.503.999.

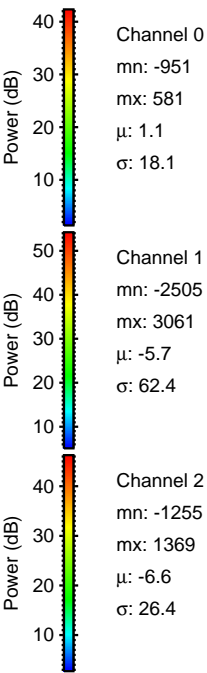
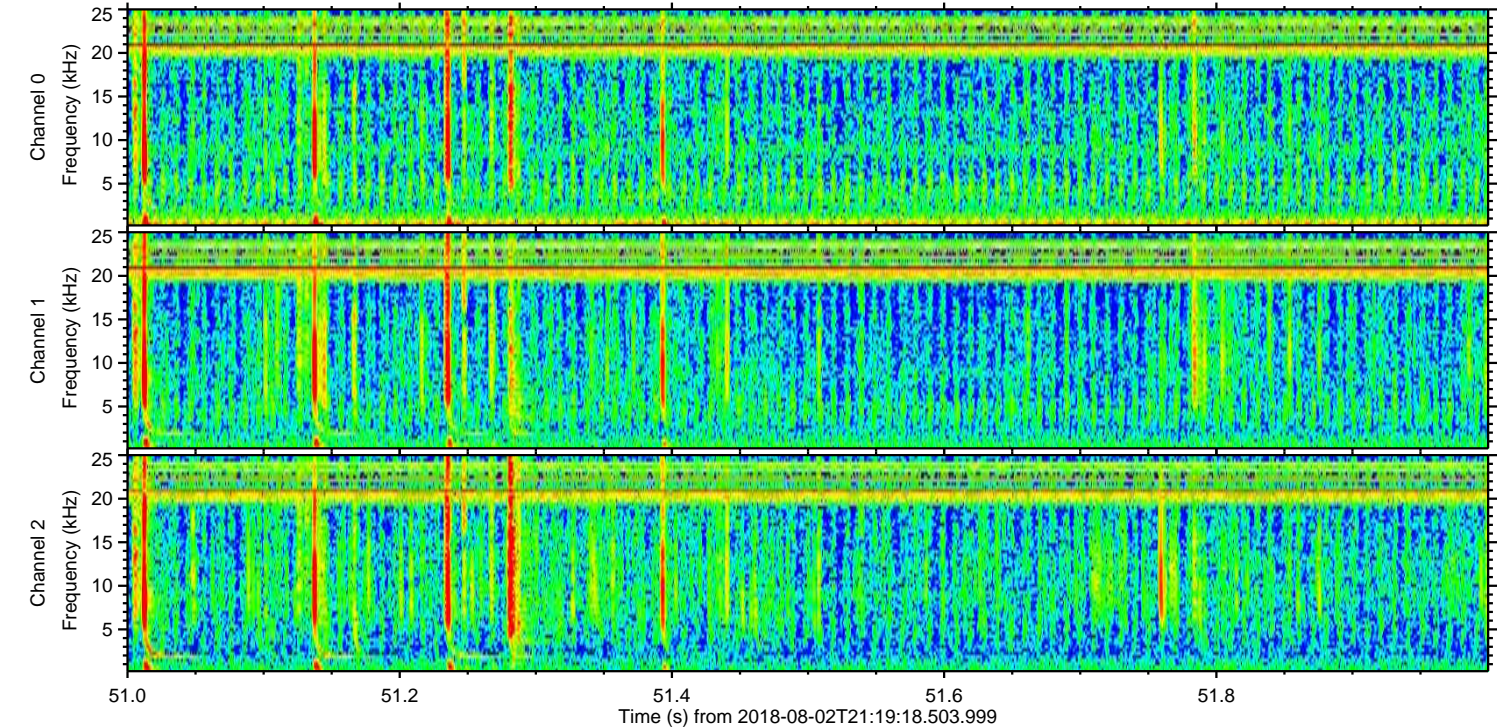
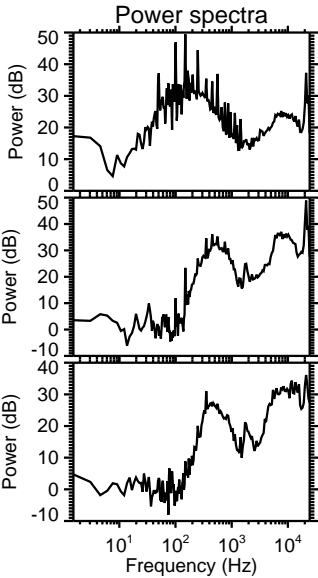
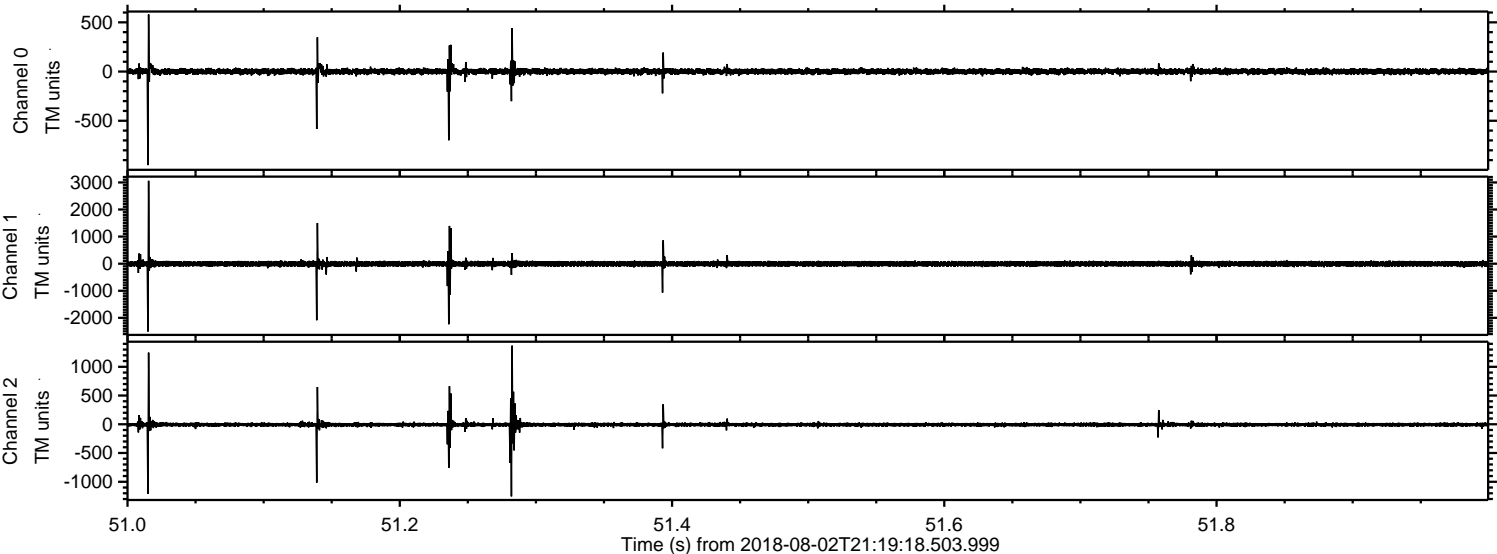
Processed Thu Aug 2 23:27:12 2018 by ELM ver.2012-10-06 from 001__elm20180802_211917__dat00.bin



Processed Thu Aug 2 23:27:18 2018 by ELM ver.2012-10-06 from 001__elm20180802_211917__dat00.bin

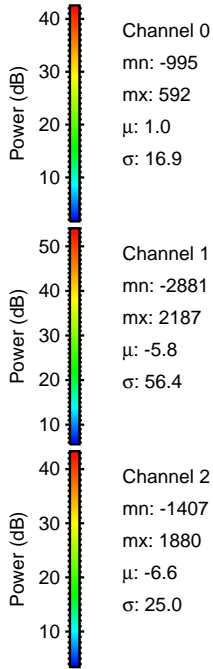
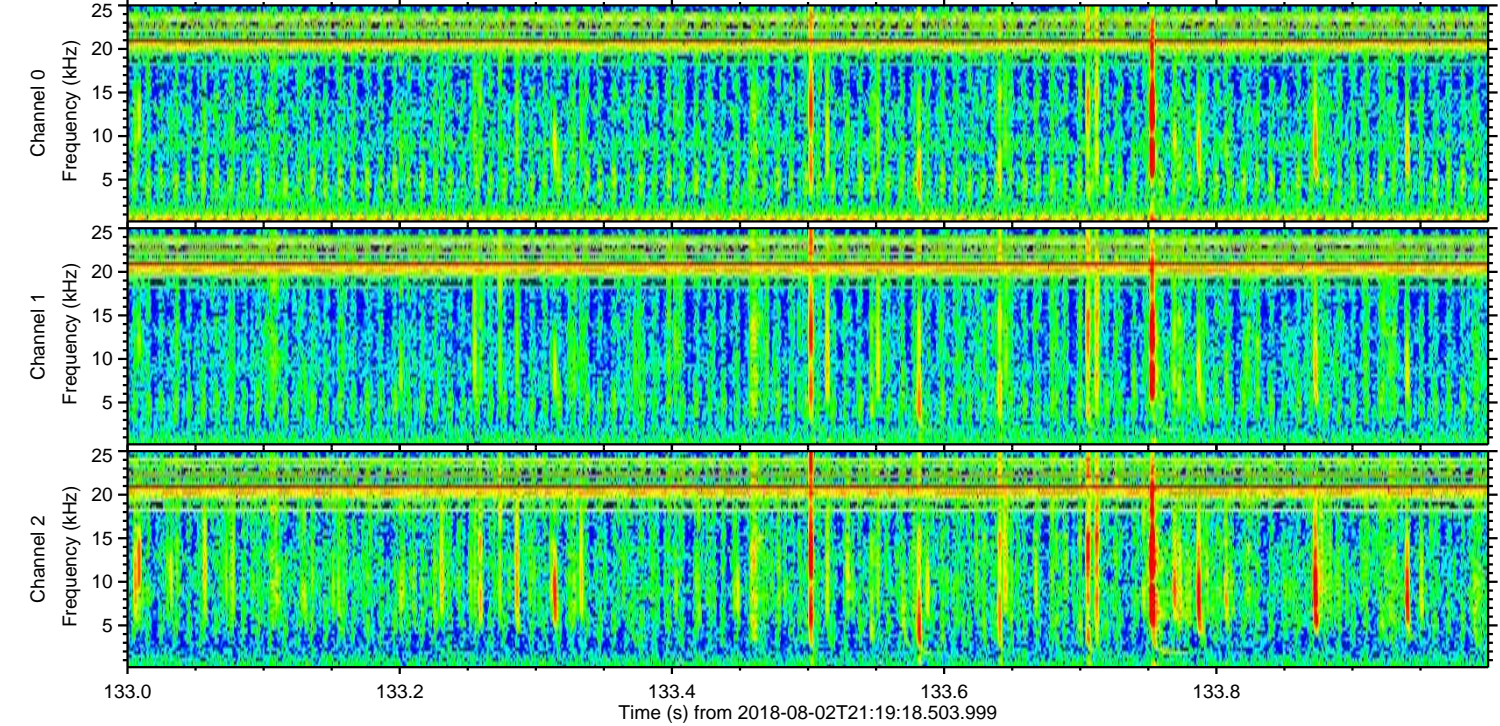
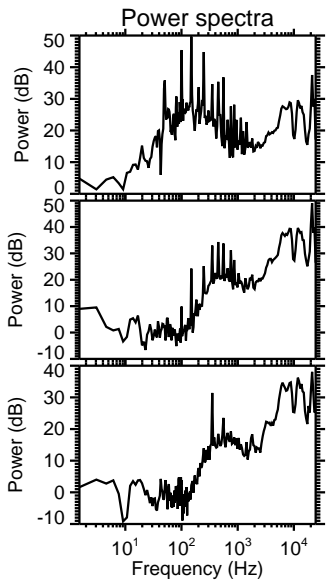
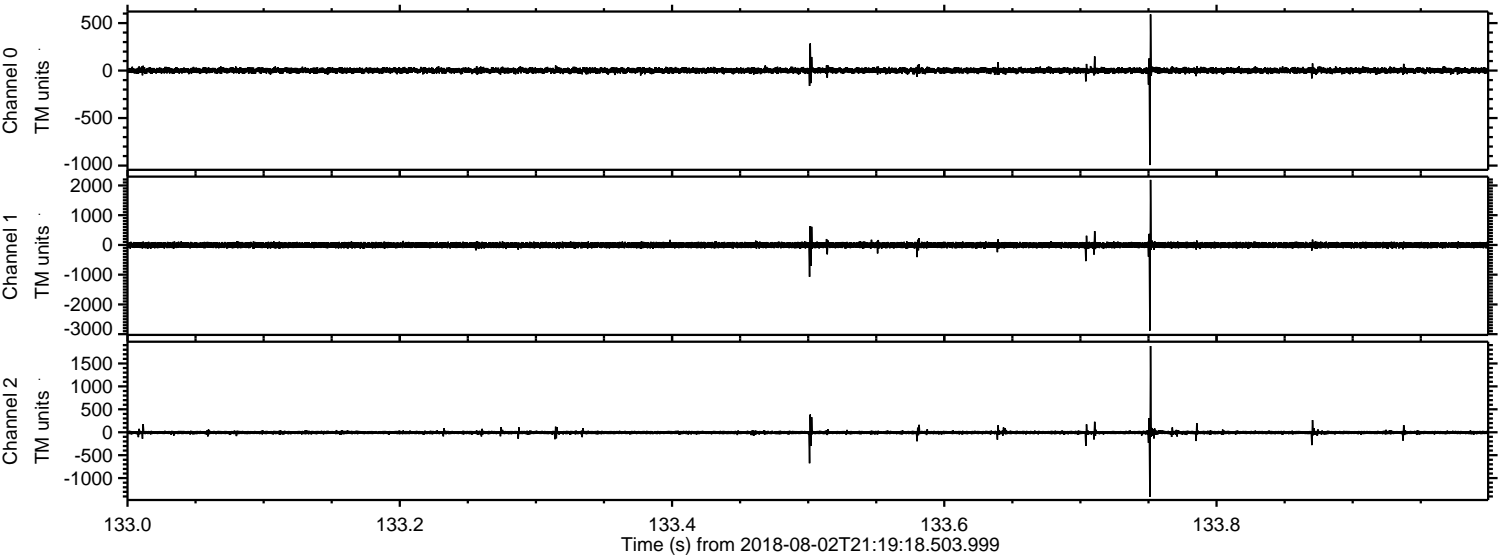


Processed Thu Aug 2 23:27:19 2018 by ELM ver.2012-10-06 from 001__elm20180802_211917__dat00.bin



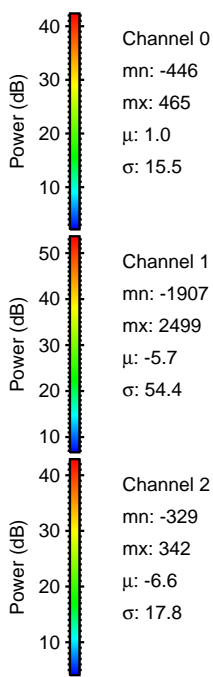
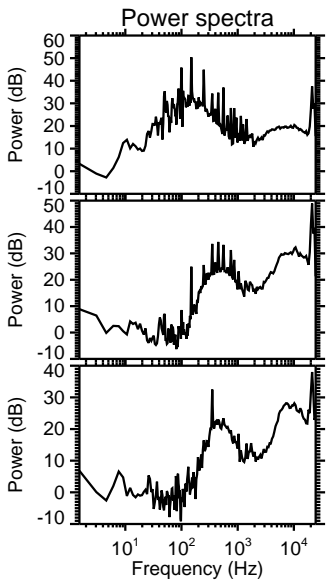
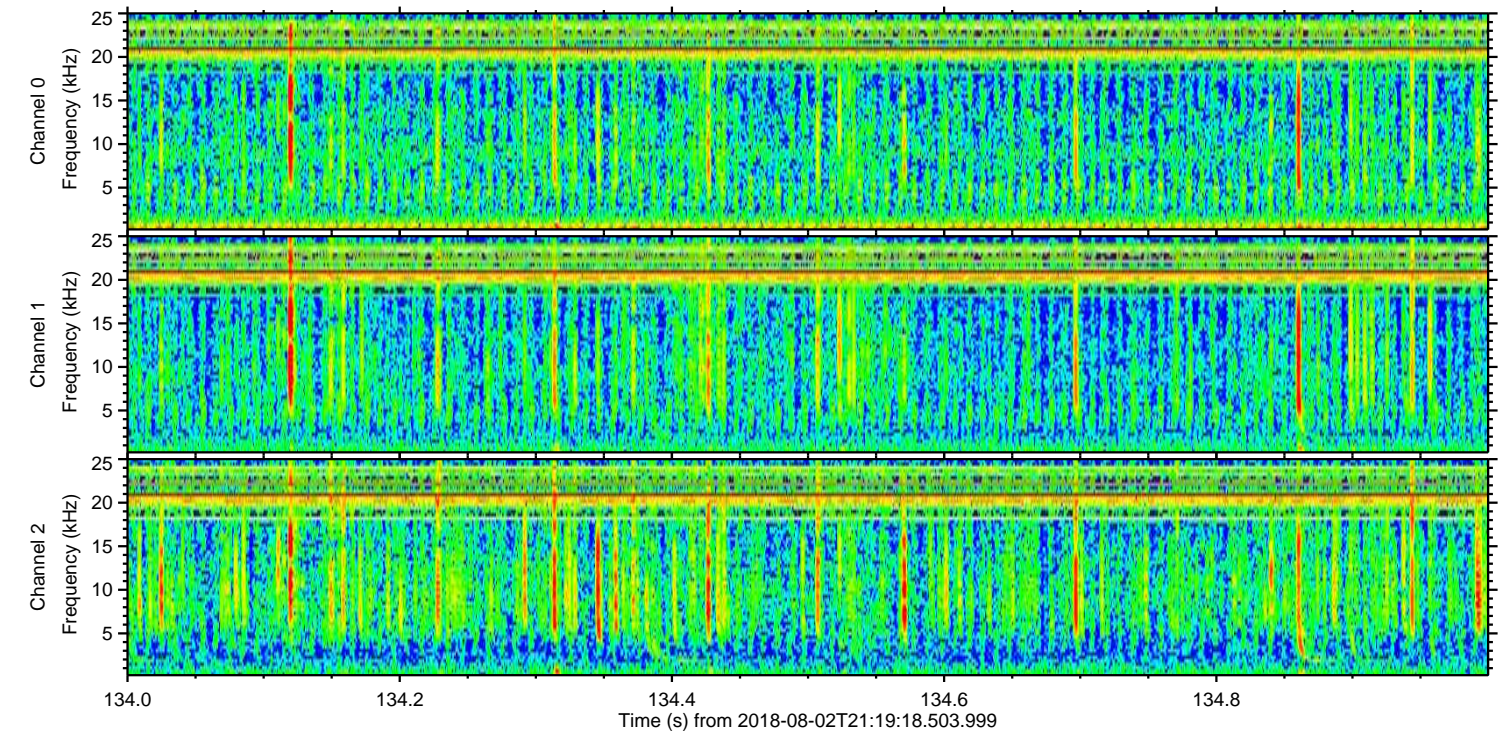
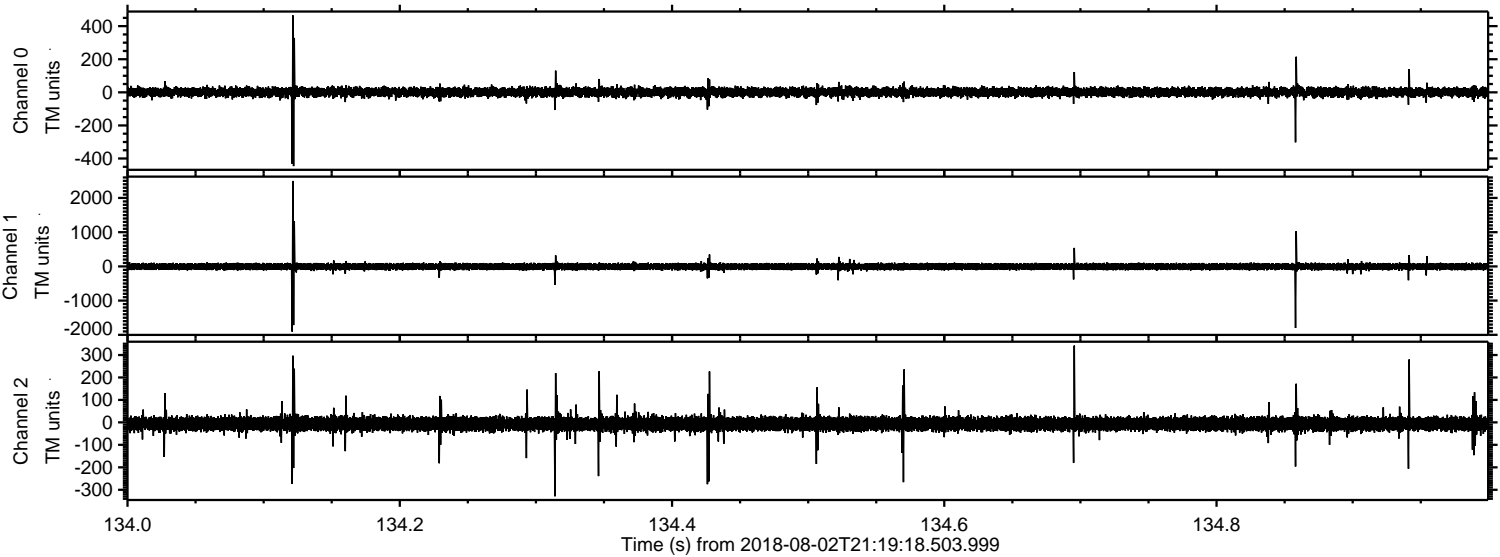
ELMAVAN 3D WAVEFORMS (Measured data sampled at 50 kHz) 51000 packets of 144 samples from 2018-08-02T21:19:18.503.999. Part 134/147

Processed Thu Aug 2 23:27:19 2018 by ELM ver.2012-10-06 from 001__elm20180802_211917__dat00.bin



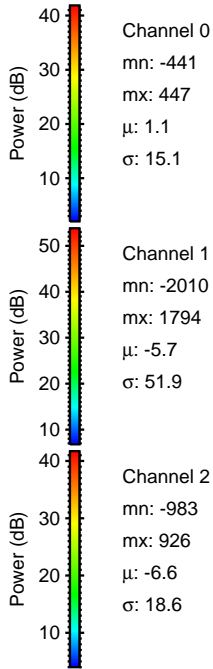
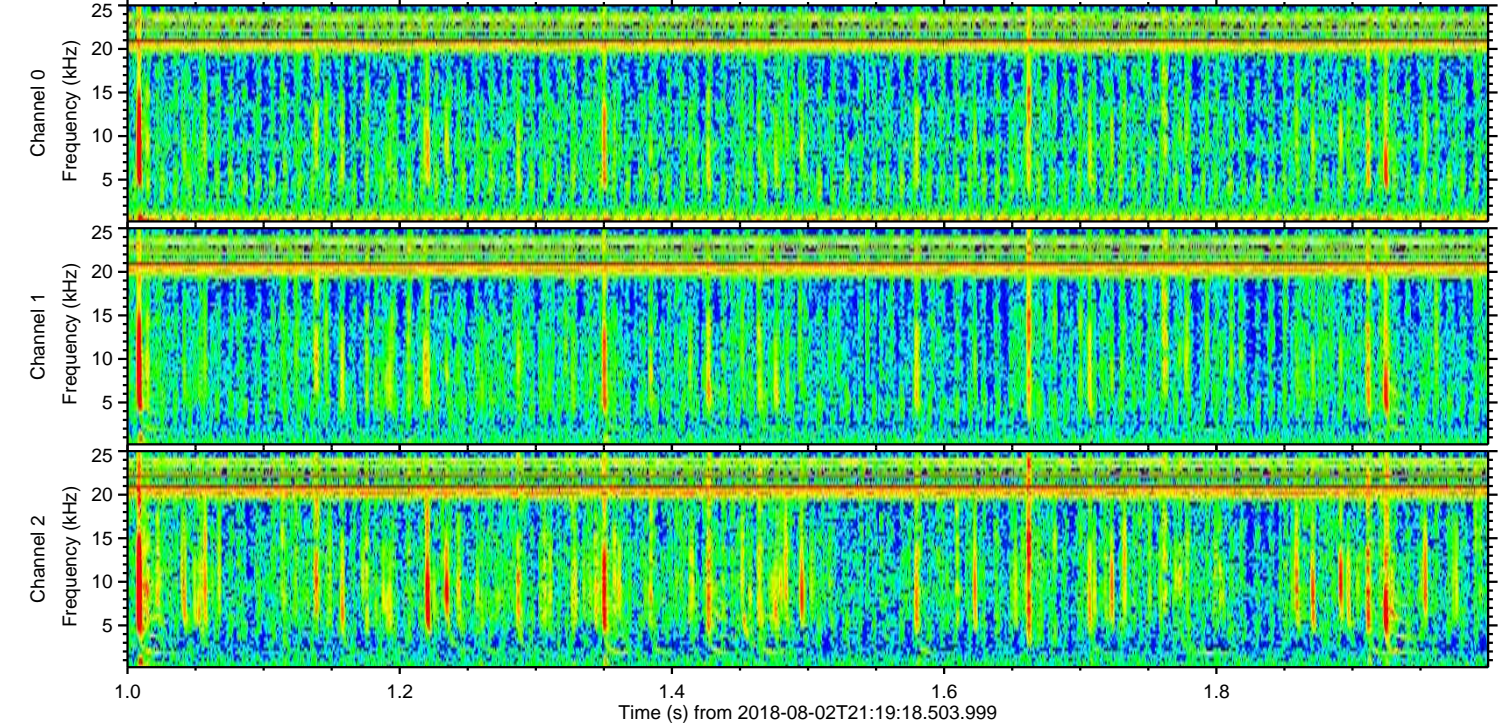
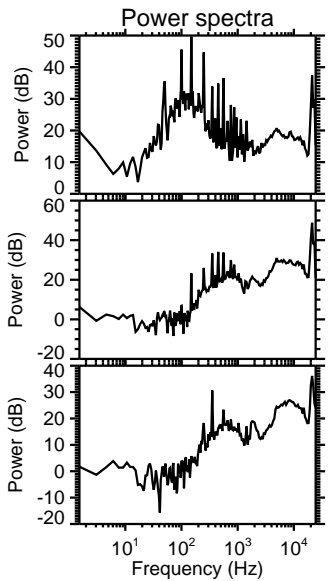
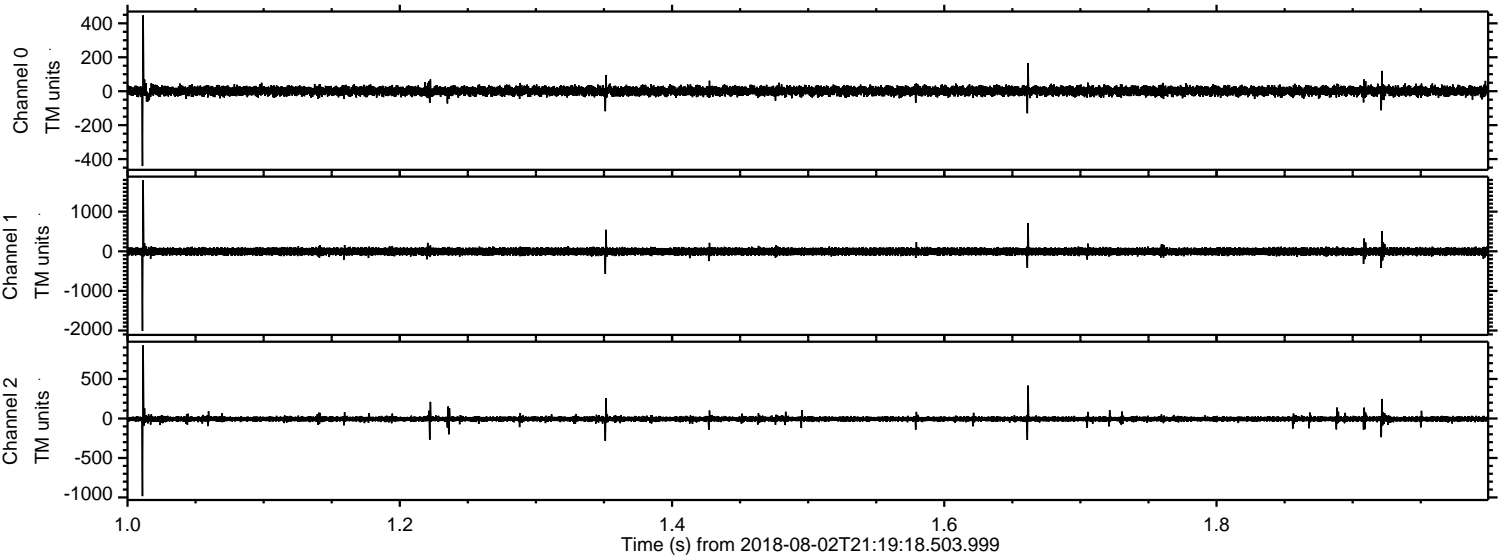
ELMAVAN 3D WAVEFORMS (Measured data sampled at 50 kHz) 51000 packets of 144 samples from 2018-08-02T21:19:18.503.999. Part 135/147

Processed Thu Aug 2 23:27:20 2018 by ELM ver.2012-10-06 from 001__elm20180802_211917__dat00.bin

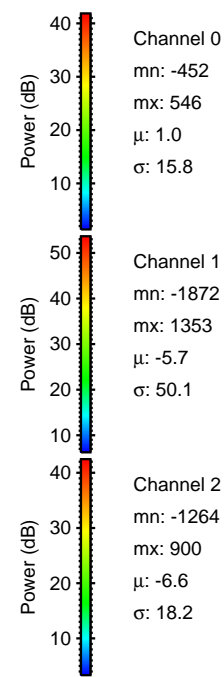
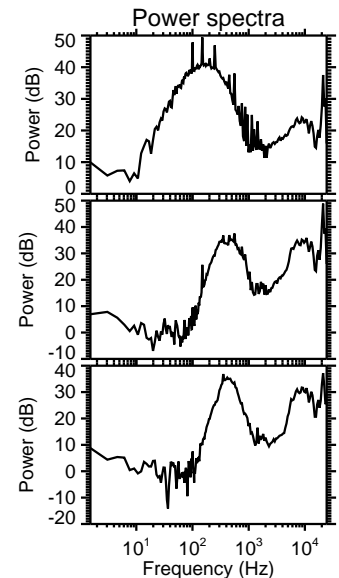
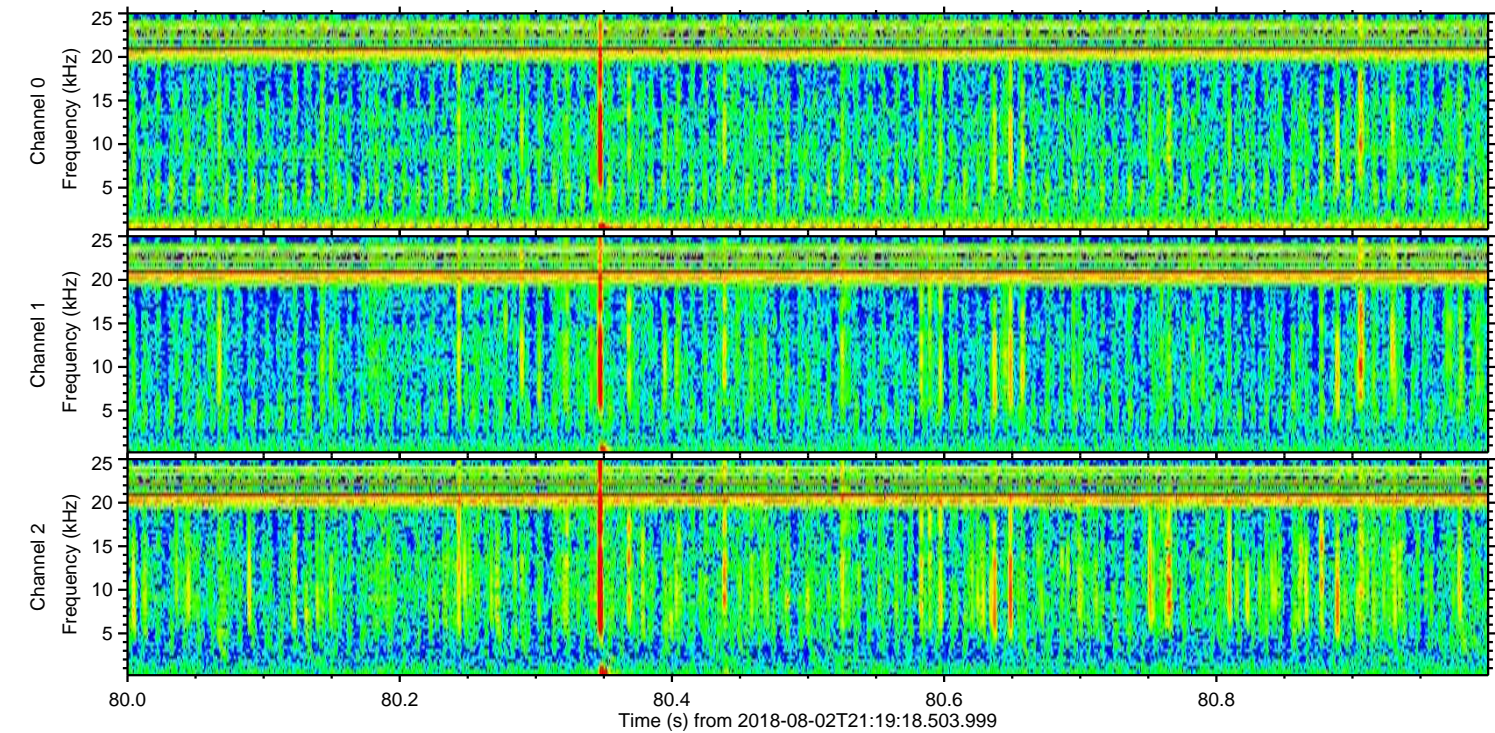
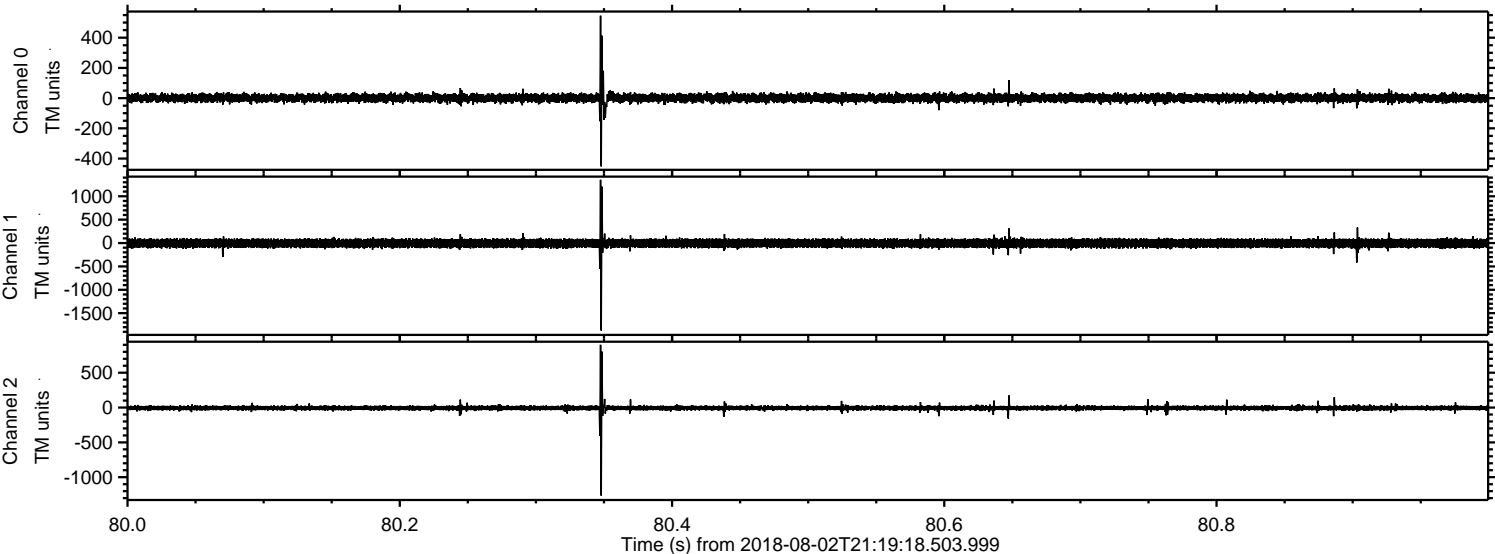


ELMAVAN 3D WAVEFORMS (Measured data sampled at 50 kHz) 51000 packets of 144 samples from 2018-08-02T21:19:18.503.999. Part 2/147

Processed Thu Aug 2 23:27:21 2018 by ELM ver.2012-10-06 from 001__elm20180802_211917__dat00.bin

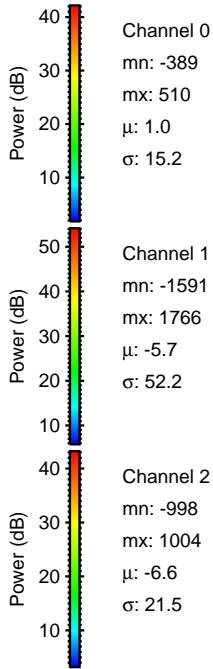
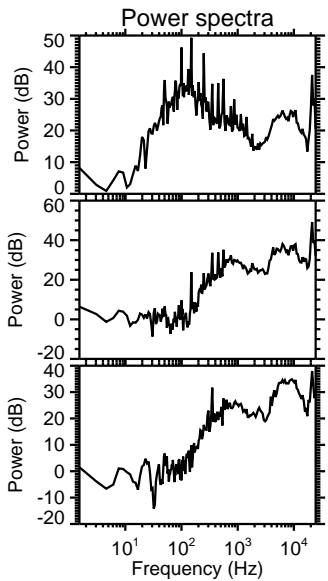
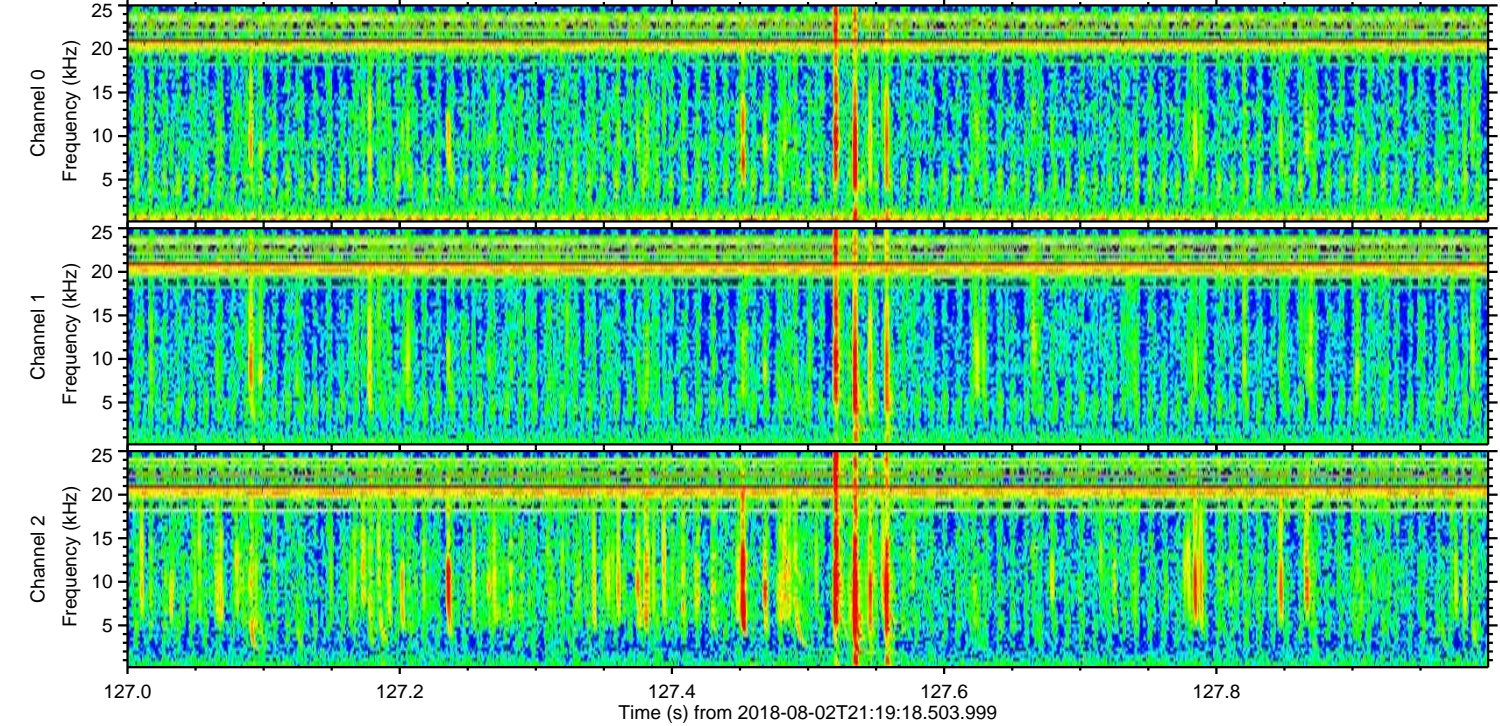
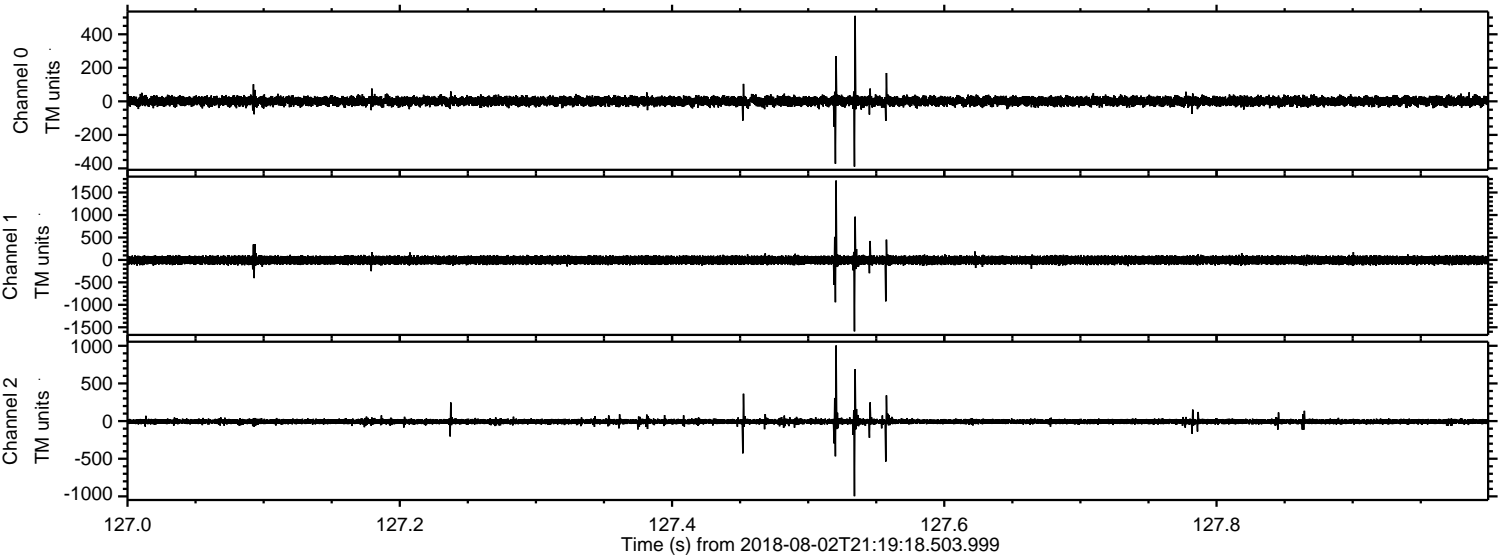


Processed Thu Aug 2 23:27:22 2018 by ELM ver.2012-10-06 from 001__elm20180802_211917__dat00.bin



ELMAVAN 3D WAVEFORMS (Measured data sampled at 50 kHz) 51000 packets of 144 samples from 2018-08-02T21:19:18.503.999. Part 128/147

Processed Thu Aug 2 23:27:22 2018 by ELM ver.2012-10-06 from 001__elm20180802_211917__dat00.bin

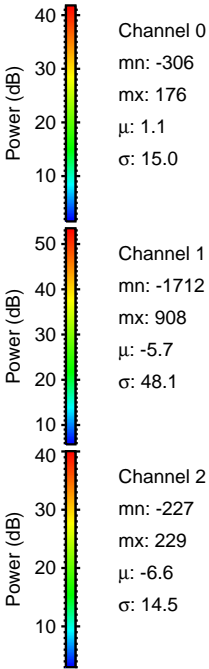
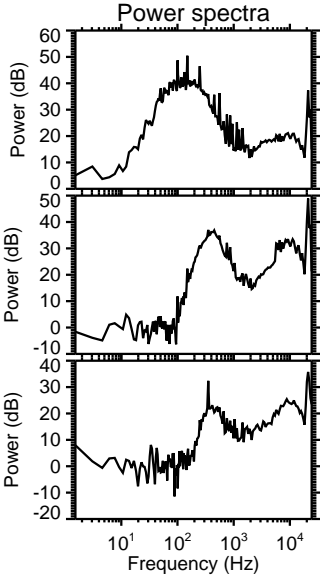
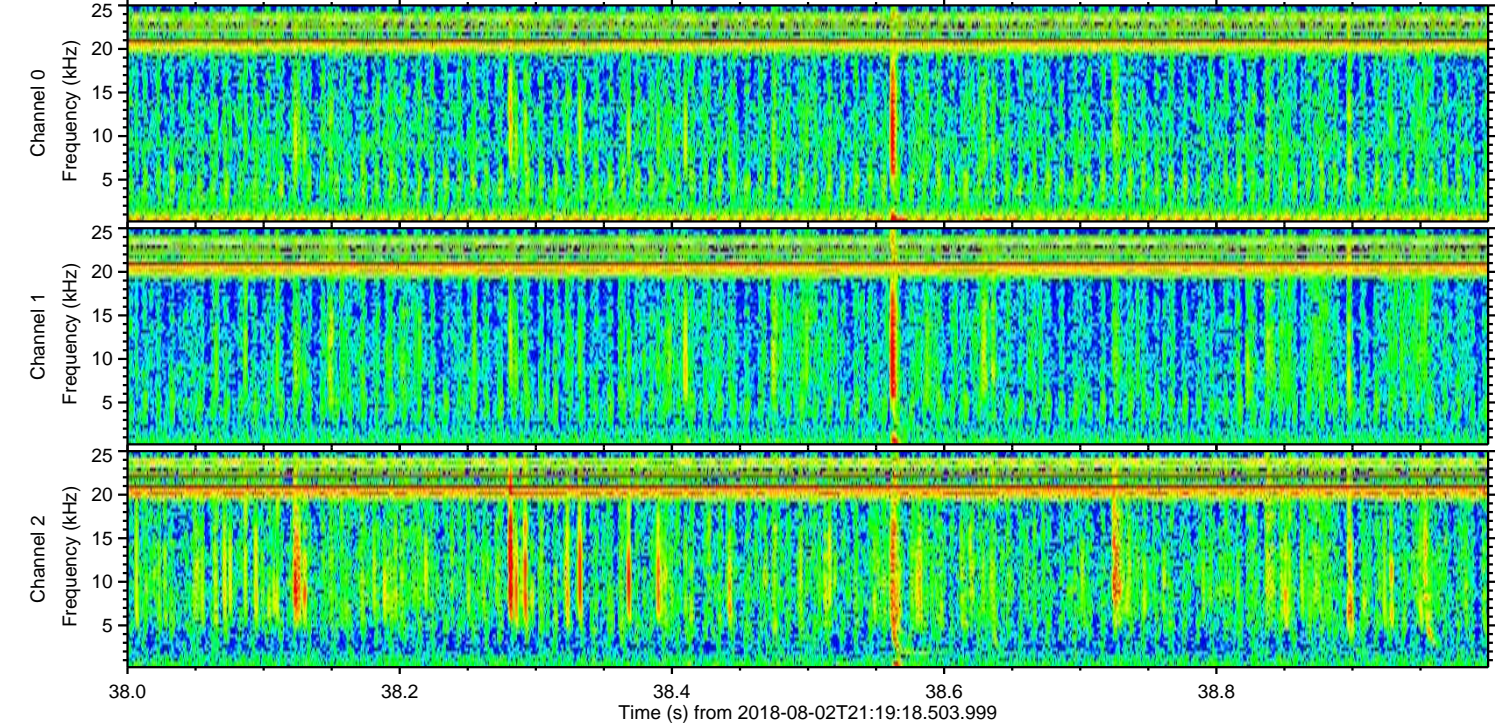
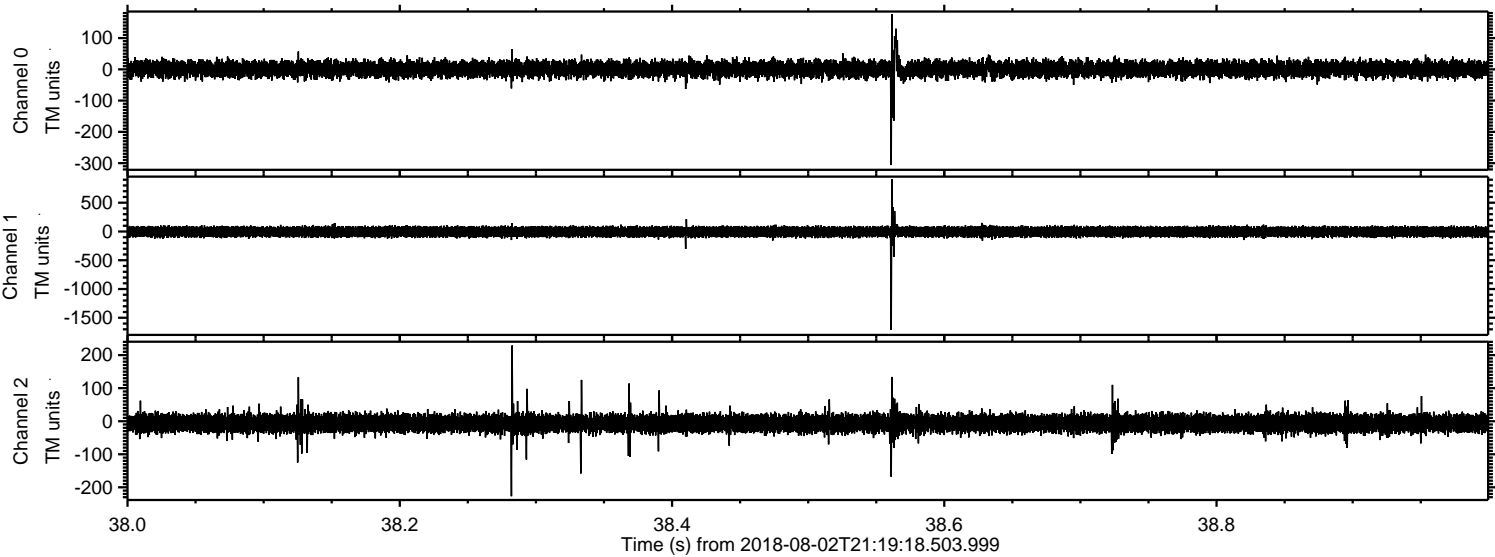


Channel 0
mn: -389
mx: 510
 μ : 1.0
 σ : 15.2

Channel 1
mn: -1591
mx: 1766
 μ : -5.7
 σ : 52.2

Channel 2
mn: -998
mx: 1004
 μ : -6.6
 σ : 21.5

Processed Thu Aug 2 23:27:23 2018 by ELM ver.2012-10-06 from 001__elm20180802_211917__dat00.bin



Processed Thu Aug 2 23:27:24 2018 by ELM ver.2012-10-06 from 001__elm20180802_211917__dat00.bin

