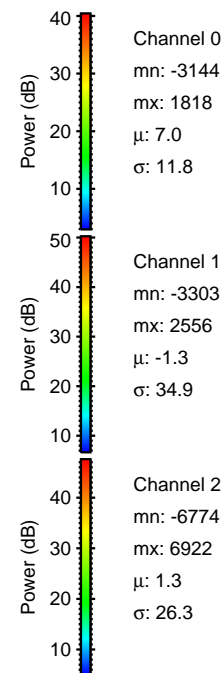
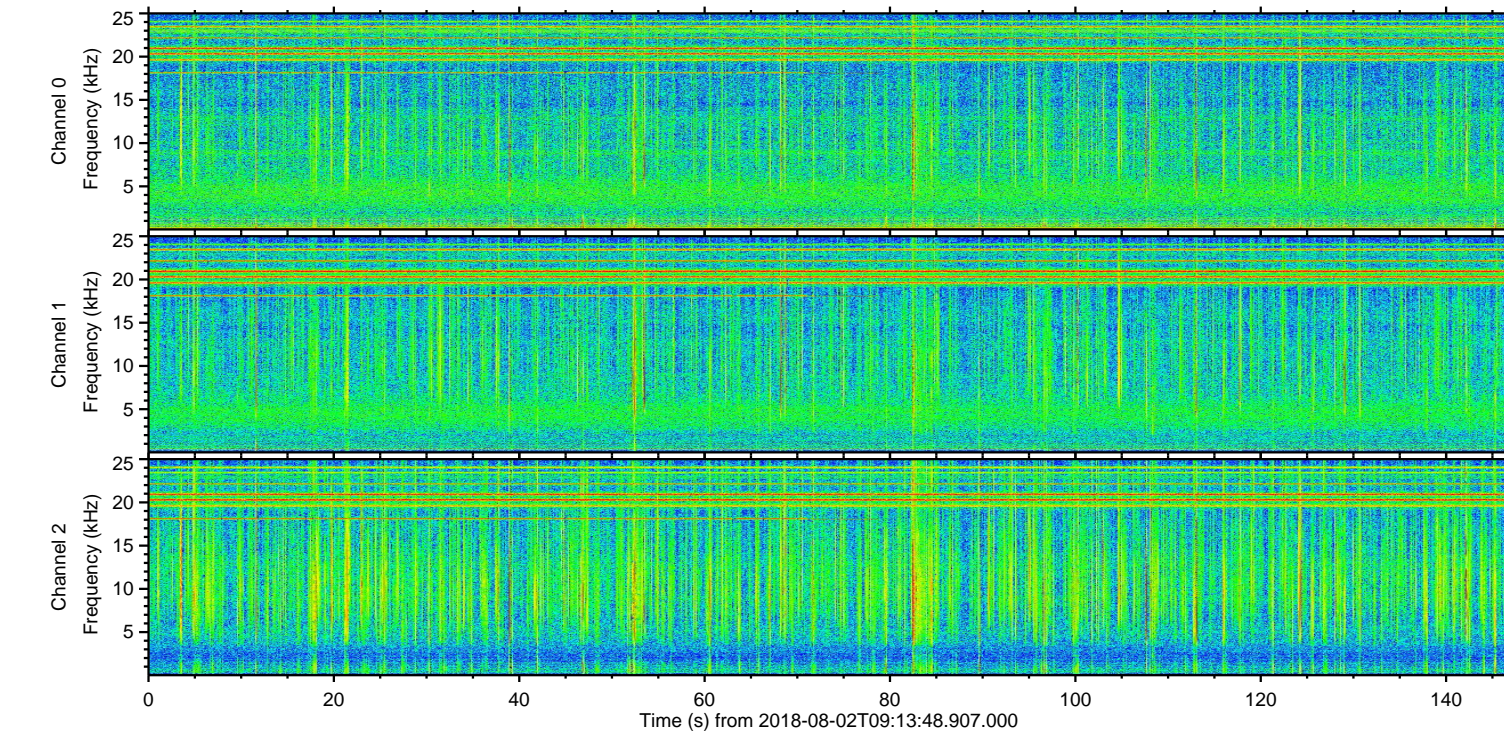
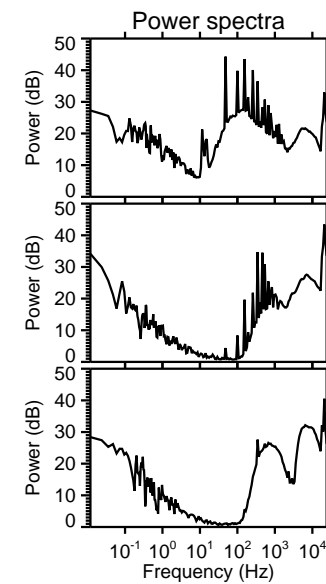
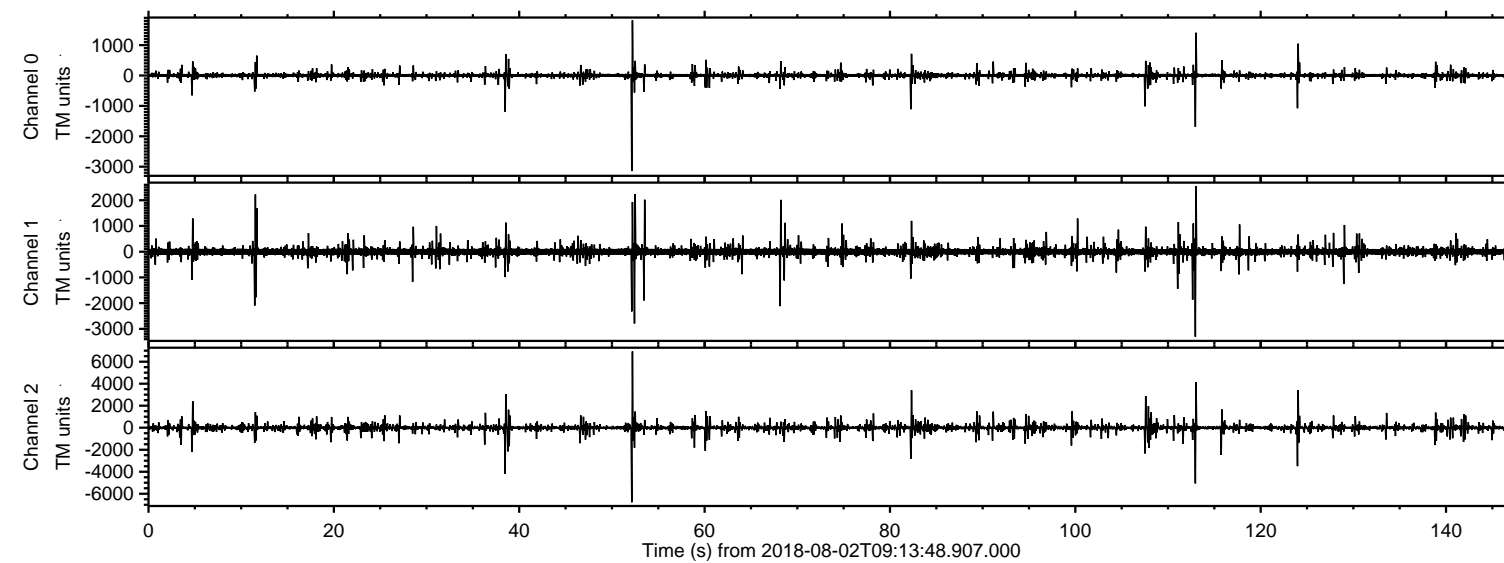
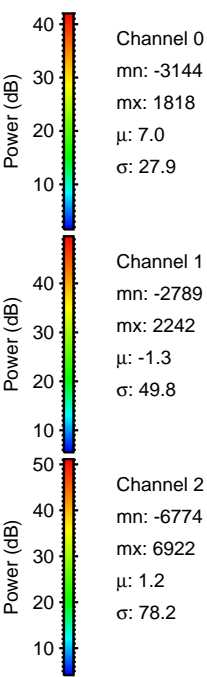
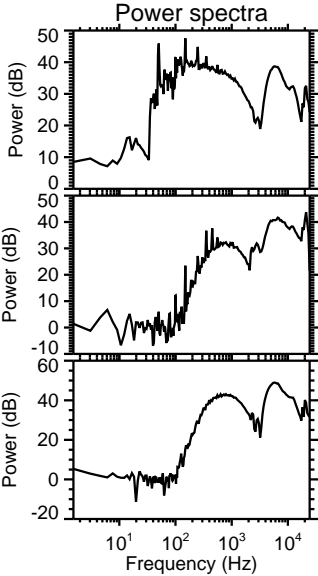
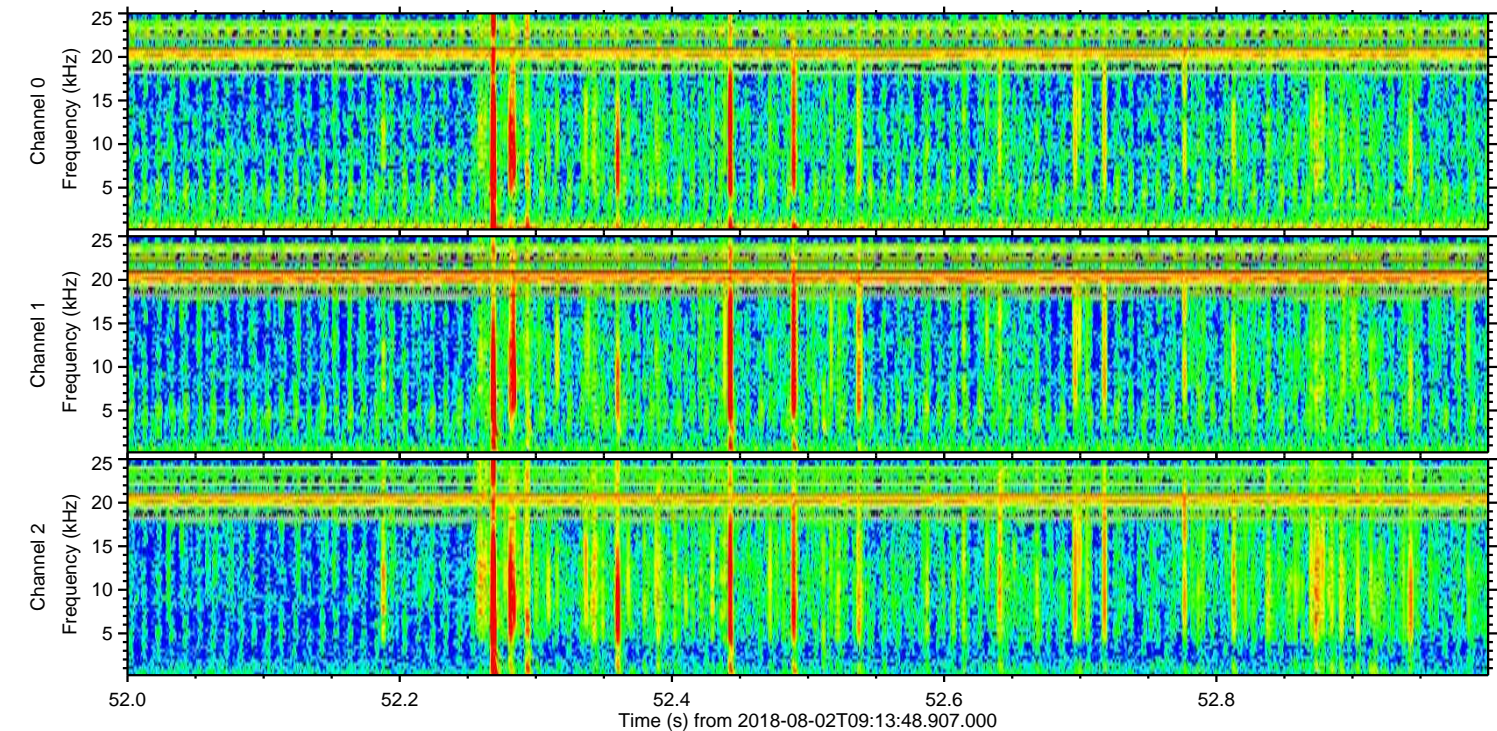
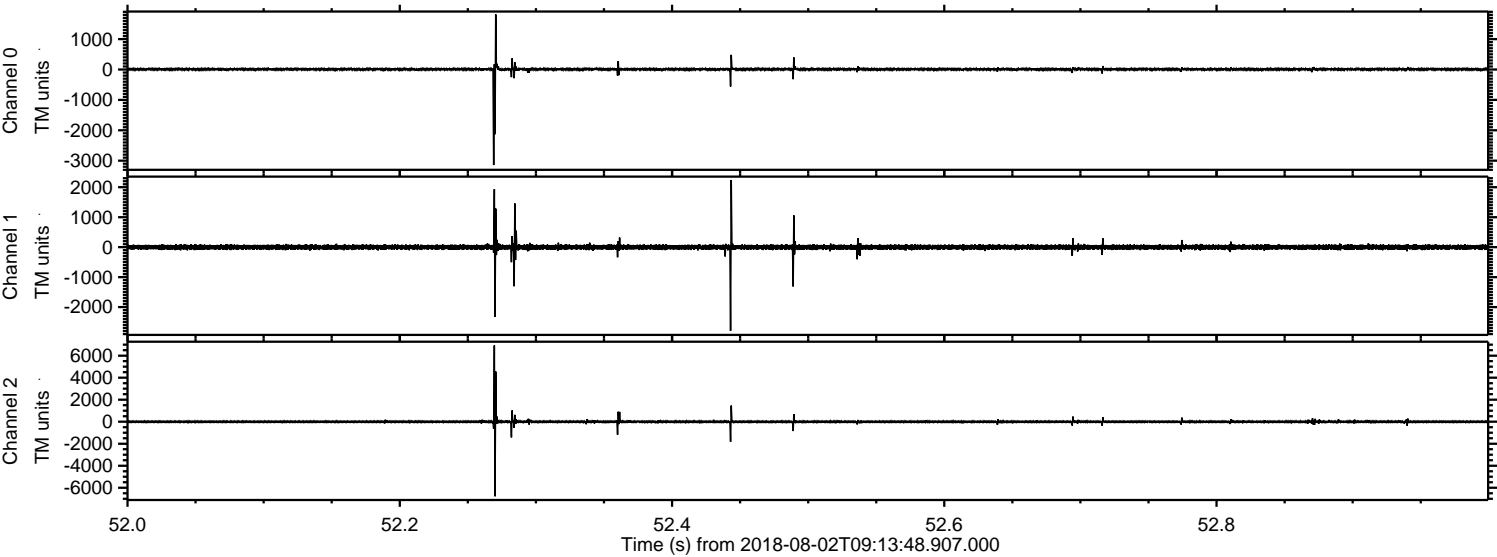


ELMAVAN 3D WAVEFORMS (Measured data sampled at 50 kHz) 51000 packets of 144 samples from 2018-08-02T09:13:48.907.000.

Processed Thu Aug 2 11:22:10 2018 by ELM ver.2012-10-06 from 001__elm20180802_091347__dat00.bin

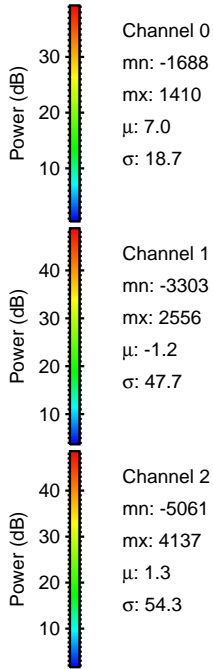
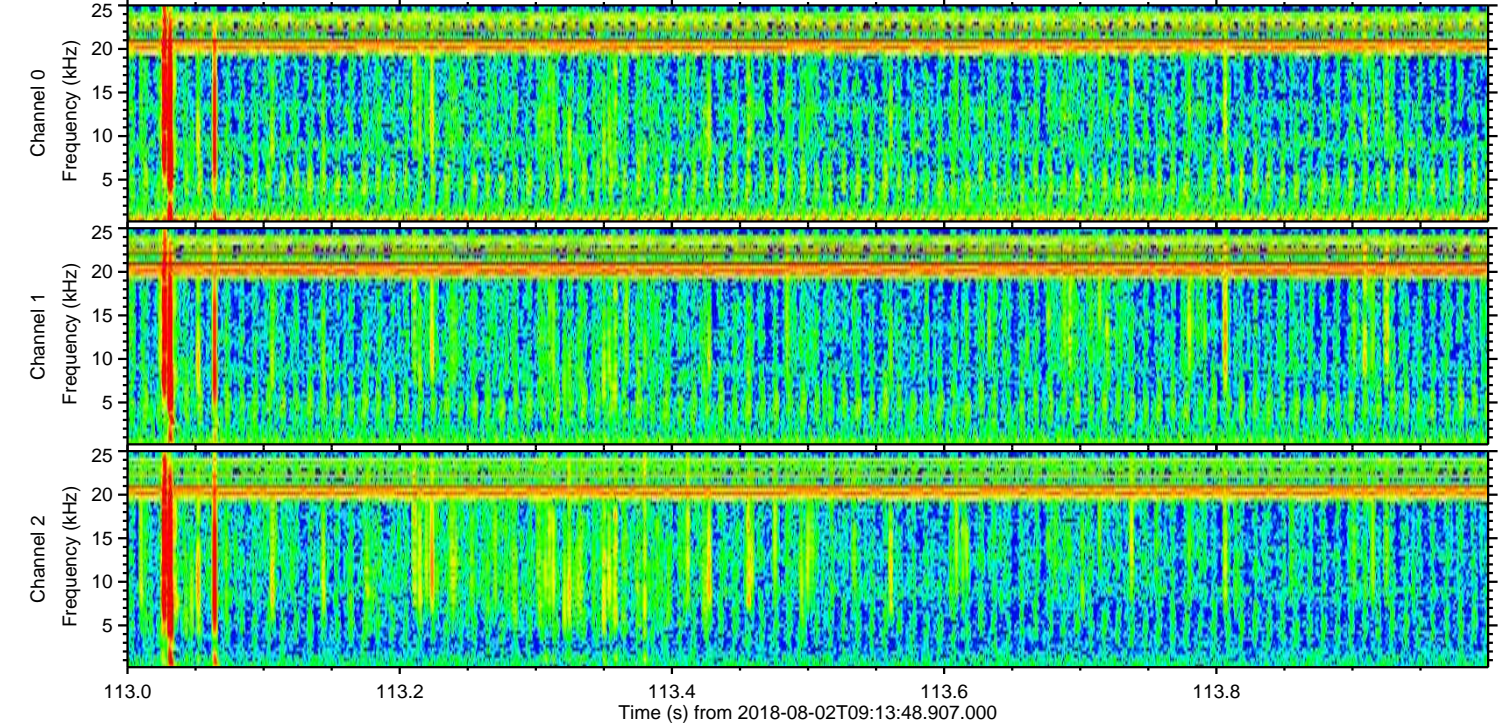
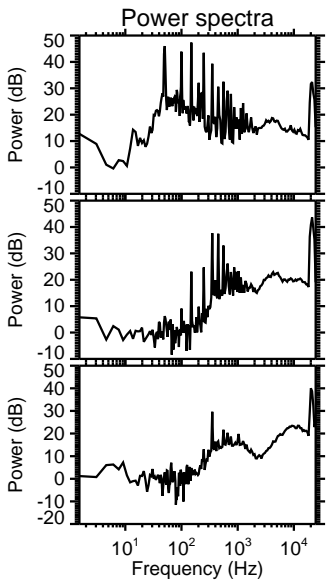
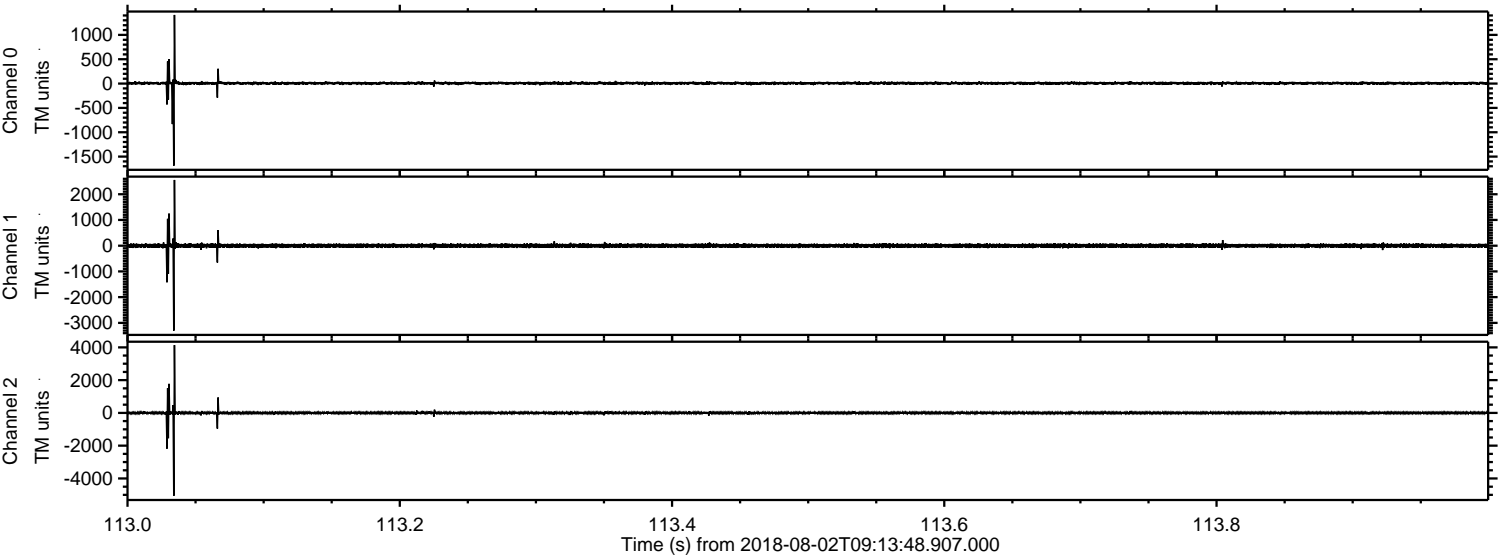


Processed Thu Aug 2 11:22:19 2018 by ELM ver.2012-10-06 from 001__elm20180802_091347__dat00.bin

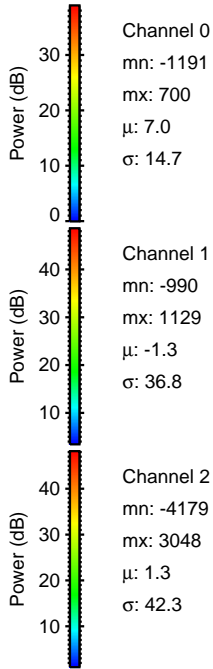
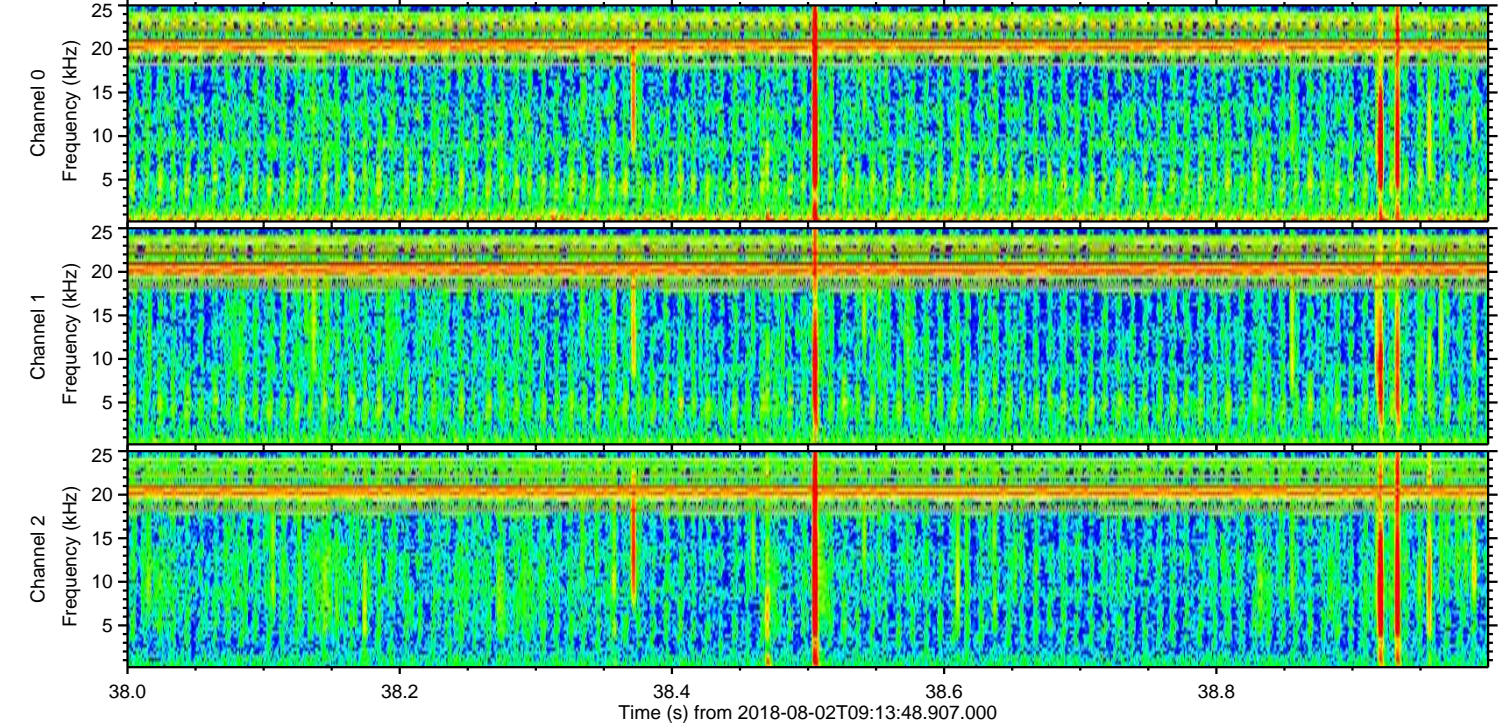
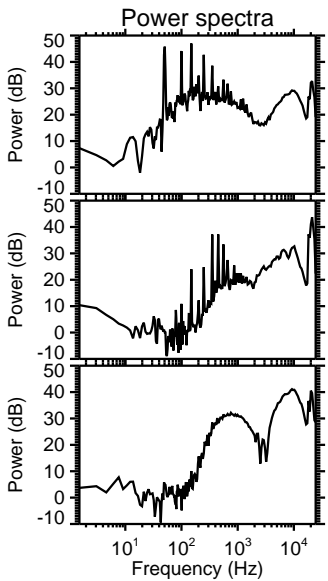
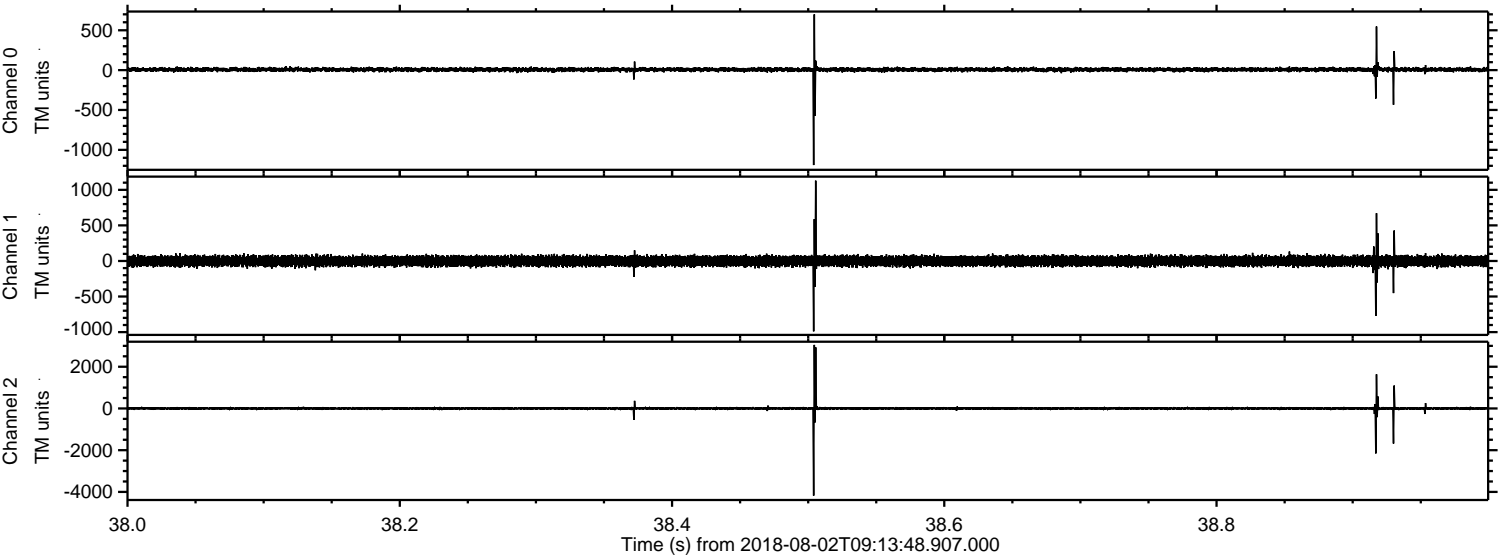


ELMAVAN 3D WAVEFORMS (Measured data sampled at 50 kHz) 51000 packets of 144 samples from 2018-08-02T09:13:48.907.000. Part 114/147

Processed Thu Aug 2 11:22:20 2018 by ELM ver.2012-10-06 from 001__elm20180802_091347__dat00.bin

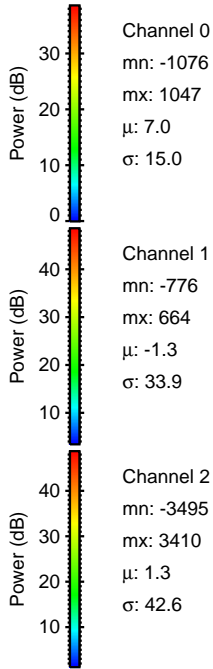
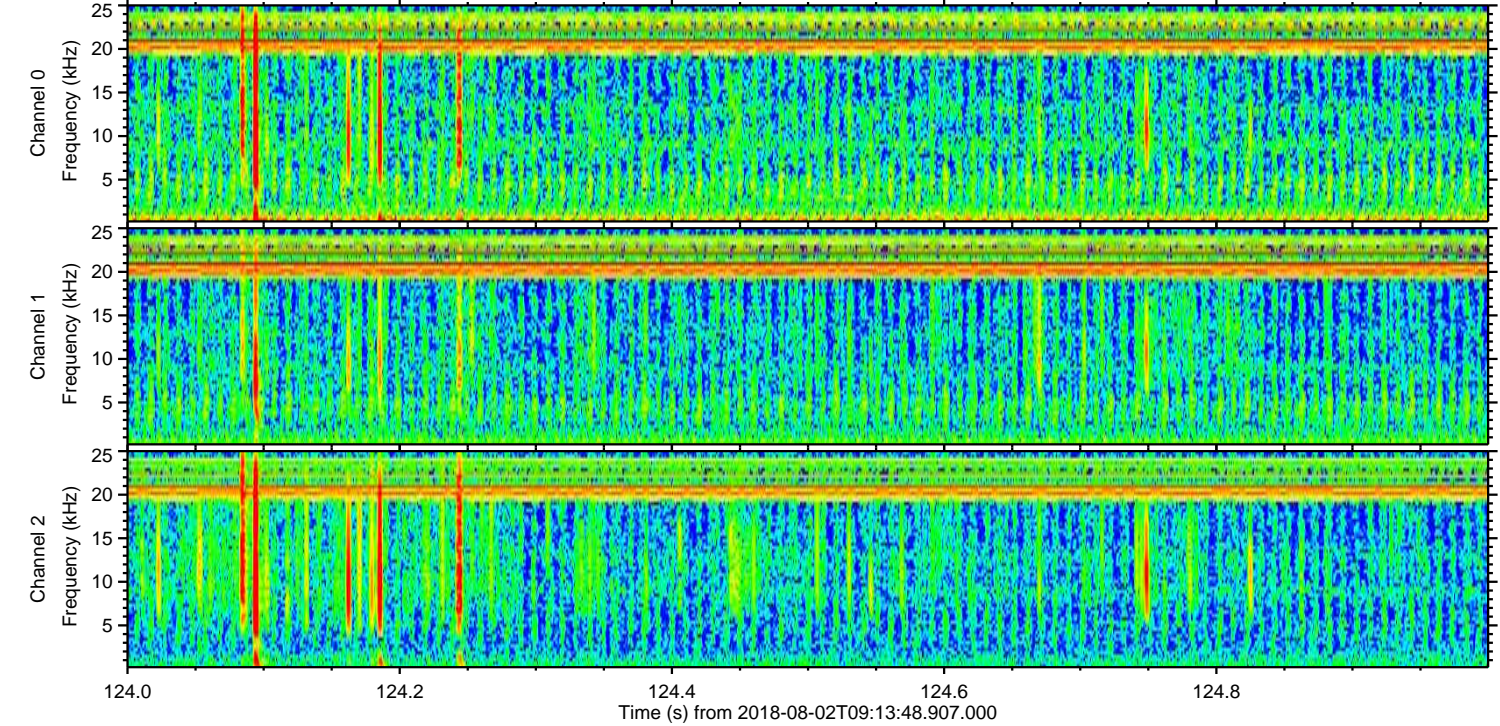
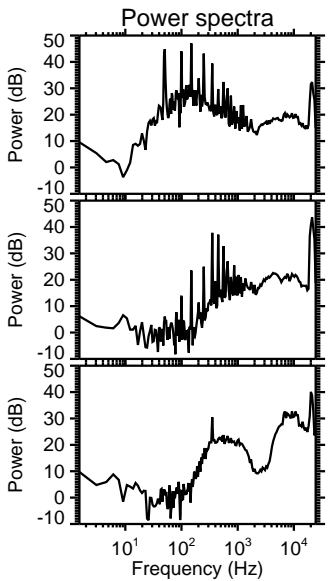
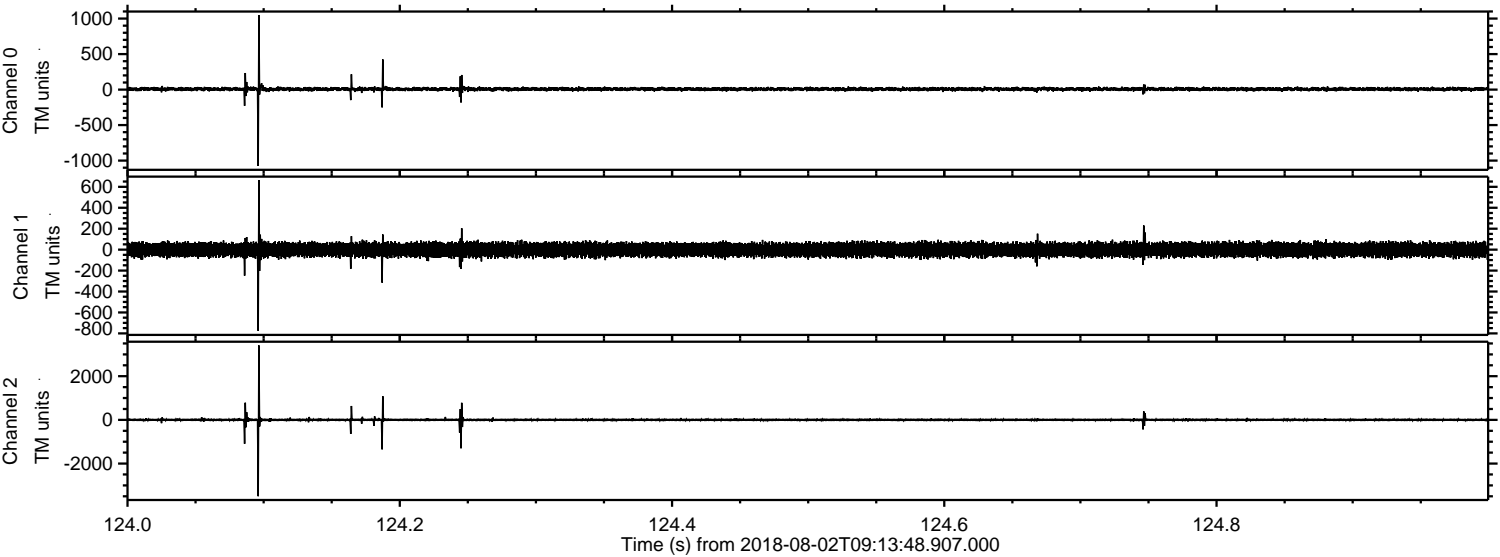


Processed Thu Aug 2 11:22:20 2018 by ELM ver.2012-10-06 from 001__elm20180802_091347__dat00.bin

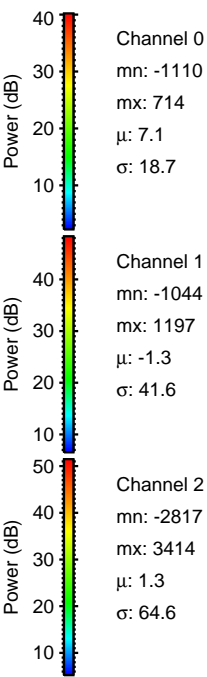
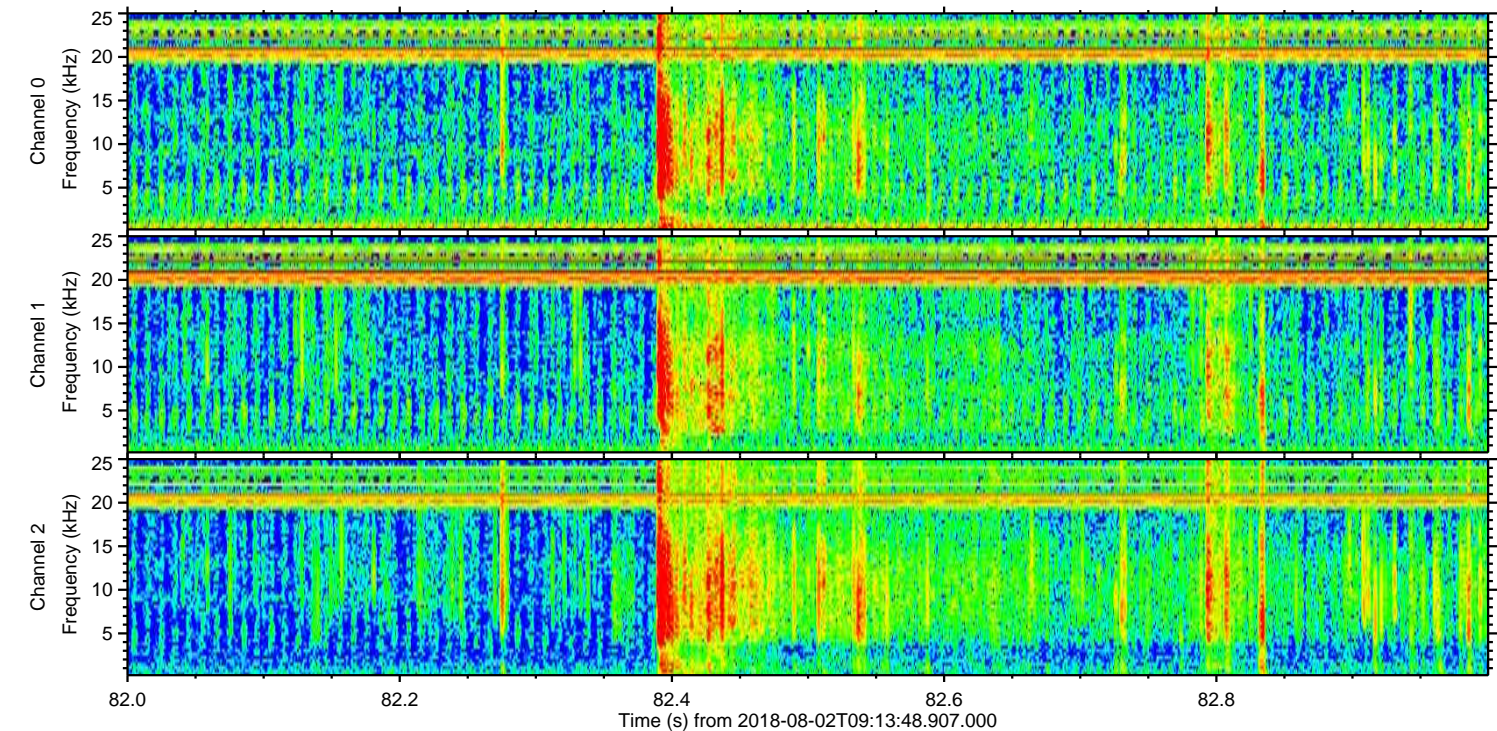
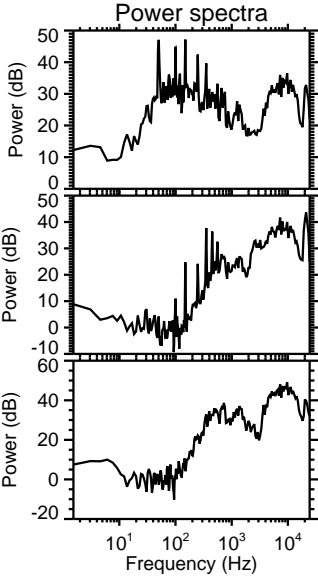
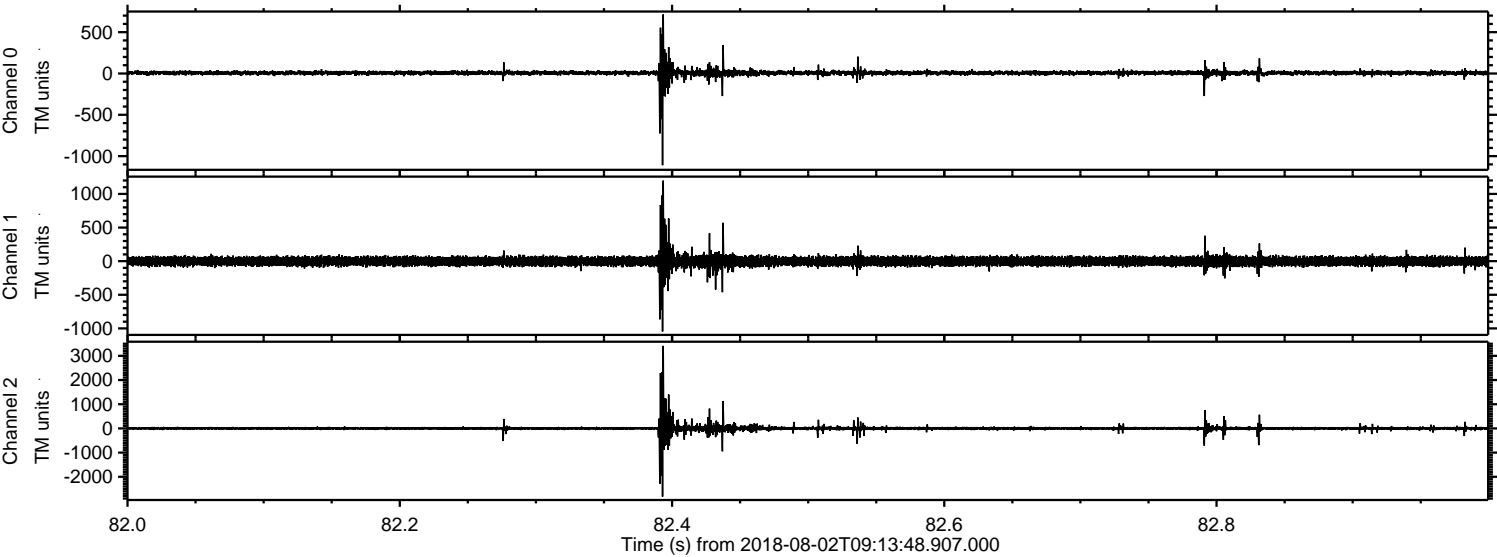


ELMAVAN 3D WAVEFORMS (Measured data sampled at 50 kHz) 51000 packets of 144 samples from 2018-08-02T09:13:48.907.000. Part 125/147

Processed Thu Aug 2 11:22:21 2018 by ELM ver.2012-10-06 from 001__elm20180802_091347__dat00.bin

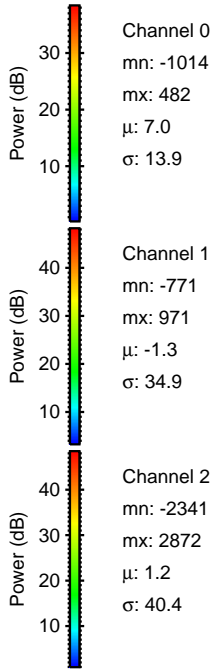
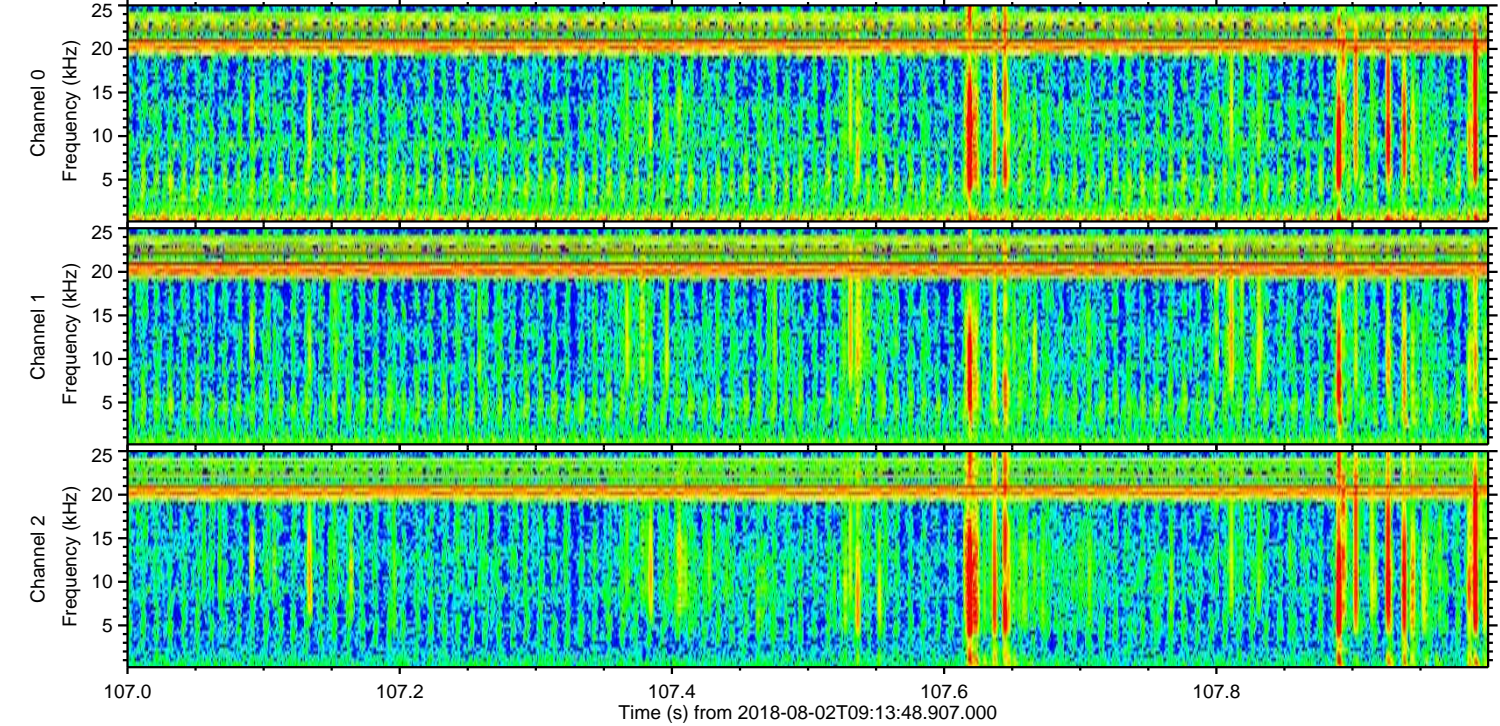
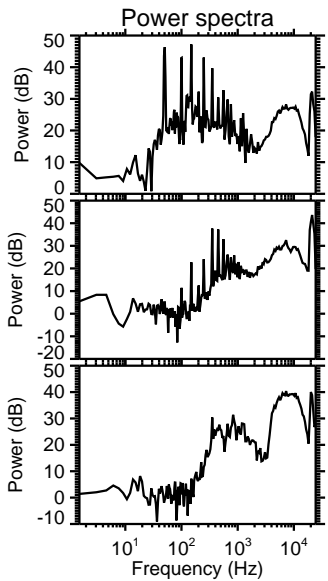
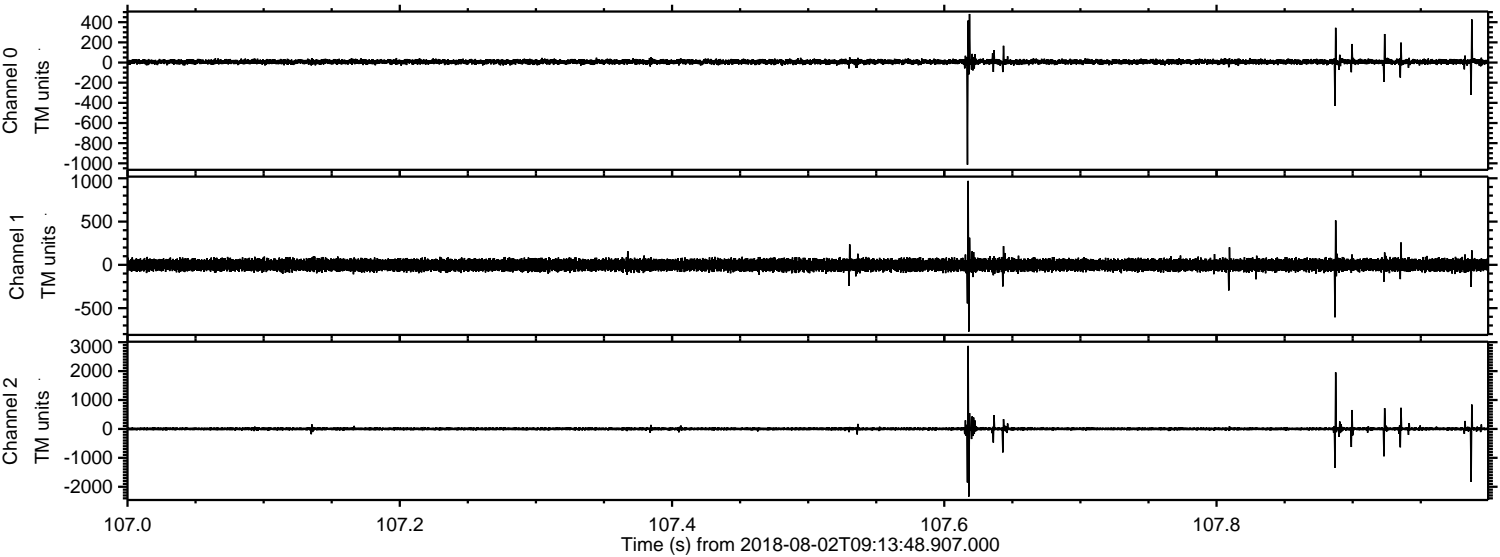


Processed Thu Aug 2 11:22:22 2018 by ELM ver.2012-10-06 from 001__elm20180802_091347__dat00.bin



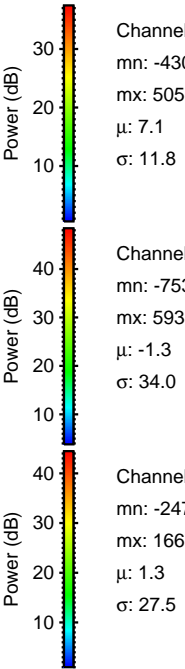
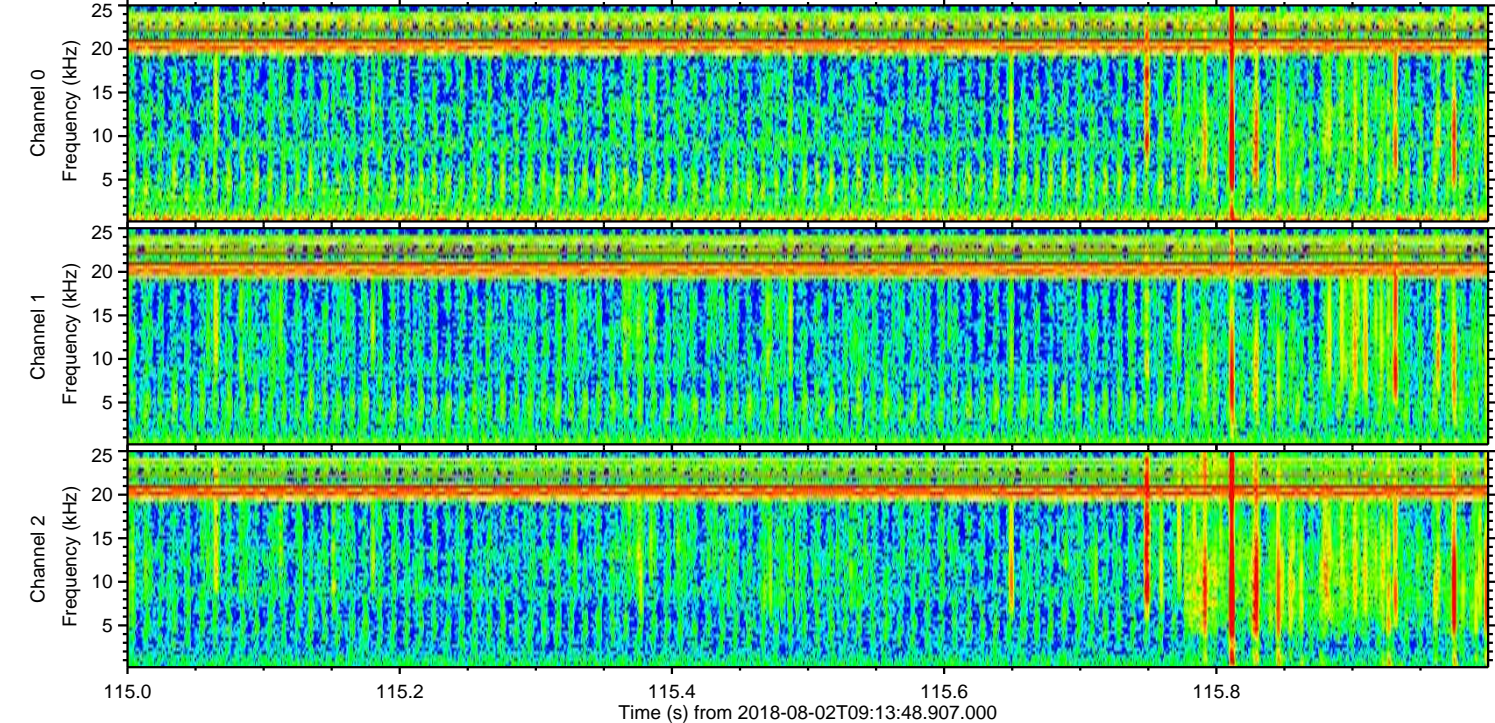
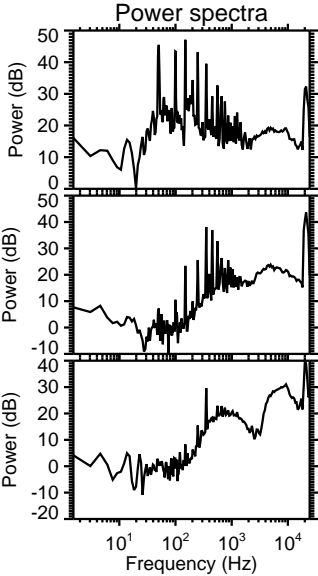
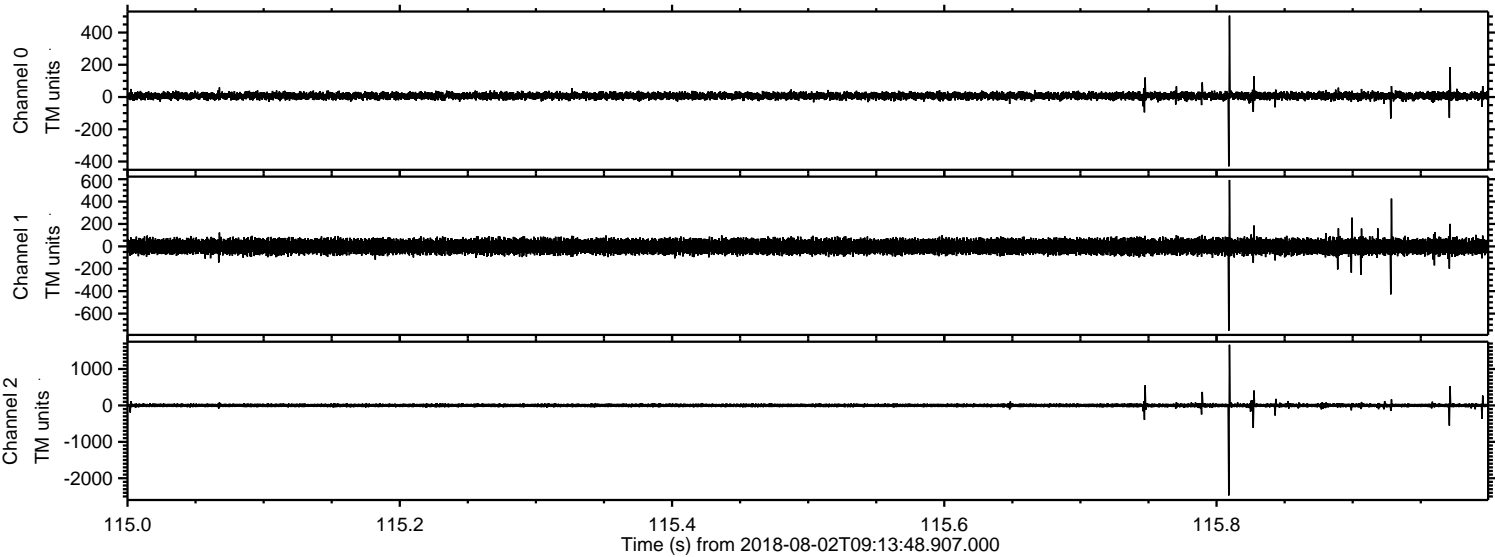
ELMAVAN 3D WAVEFORMS (Measured data sampled at 50 kHz) 51000 packets of 144 samples from 2018-08-02T09:13:48.907.000. Part 108/147

Processed Thu Aug 2 11:22:22 2018 by ELM ver.2012-10-06 from 001__elm20180802_091347__dat00.bin



ELMAVAN 3D WAVEFORMS (Measured data sampled at 50 kHz) 51000 packets of 144 samples from 2018-08-02T09:13:48.907.000. Part 116/147

Processed Thu Aug 2 11:22:23 2018 by ELM ver.2012-10-06 from 001__elm20180802_091347__dat00.bin

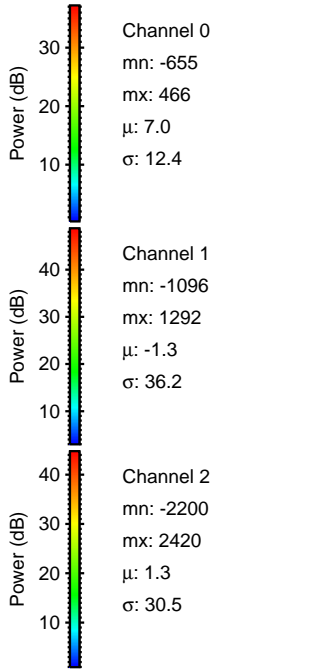
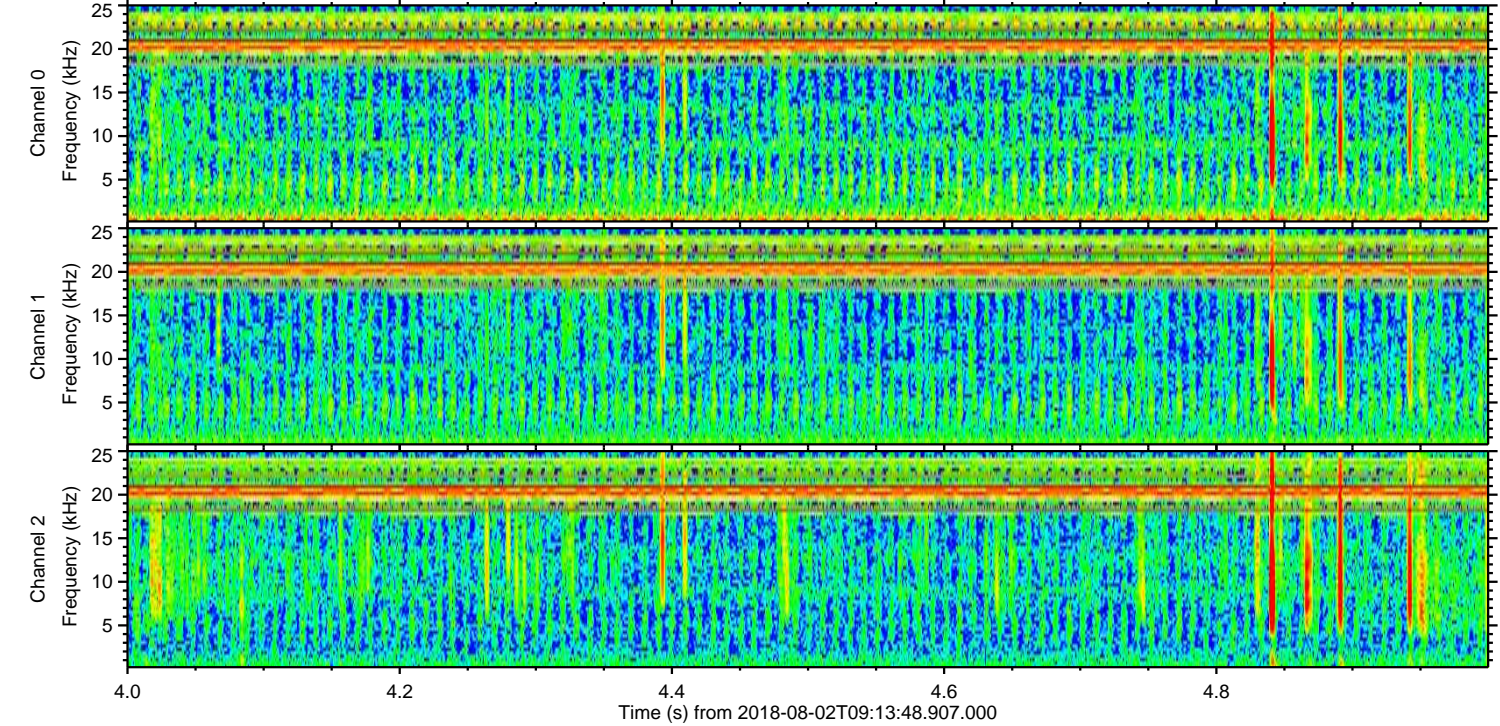
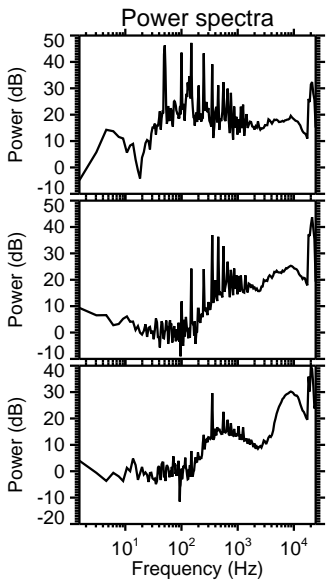
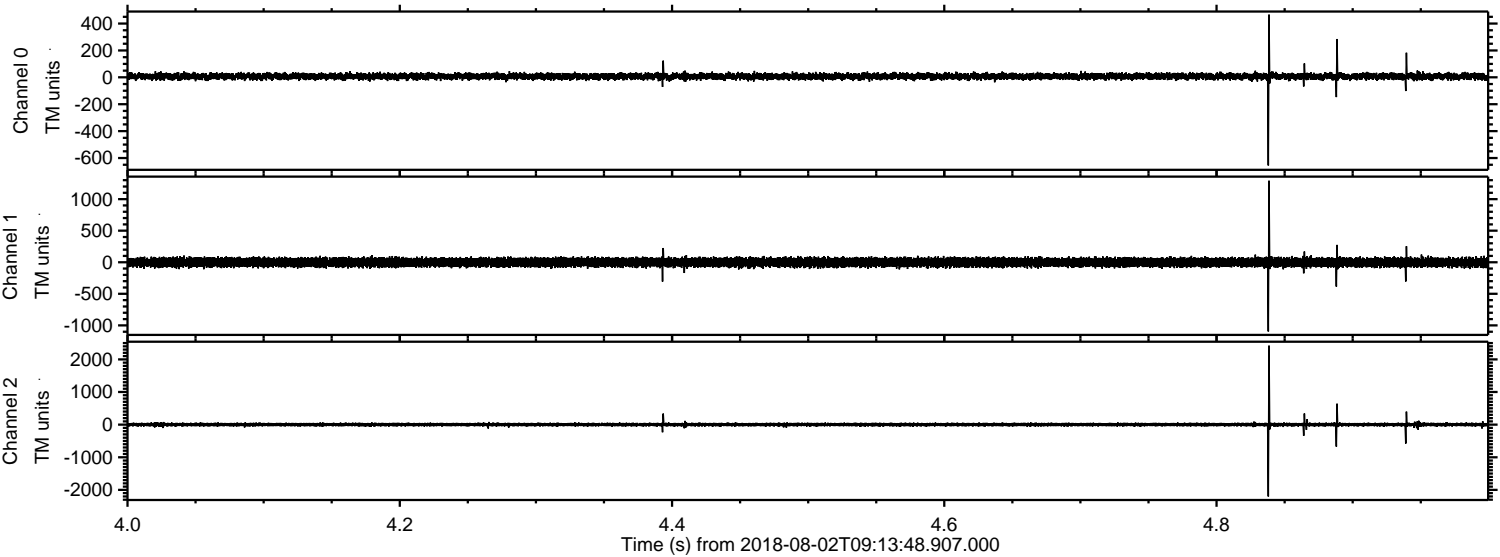


Channel 0
mn: -430
mx: 505
 μ : 7.1
 σ : 11.8

Channel 1
mn: -753
mx: 593
 μ : -1.3
 σ : 34.0

Channel 2
mn: -2474
mx: 1667
 μ : 1.3
 σ : 27.5

Processed Thu Aug 2 11:22:24 2018 by ELM ver.2012-10-06 from 001__elm20180802_091347__dat00.bin



Processed Thu Aug 2 11:22:24 2018 by ELM ver.2012-10-06 from 001__elm20180802_091347__dat00.bin

