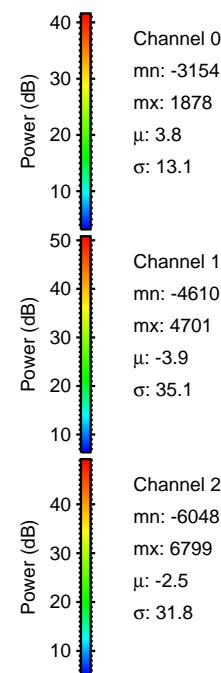
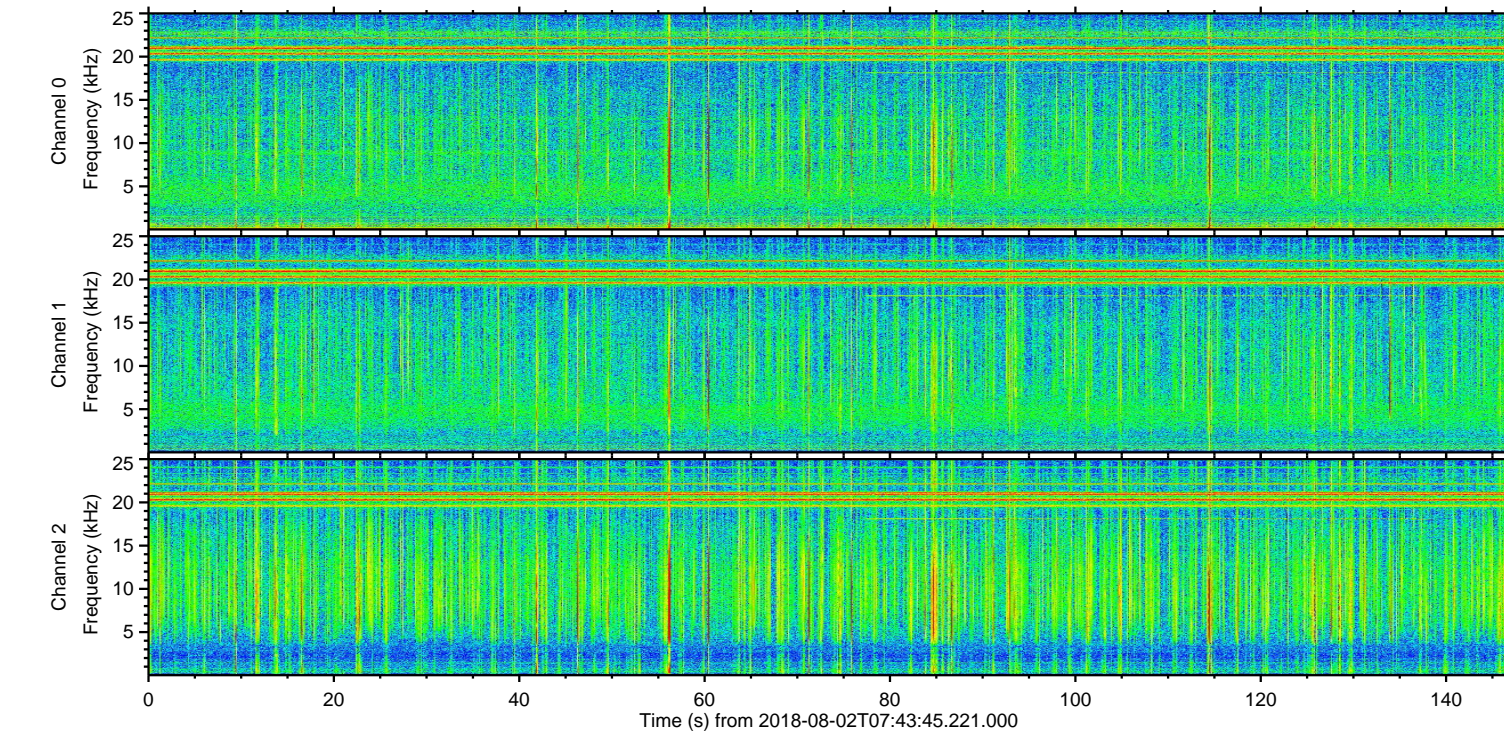
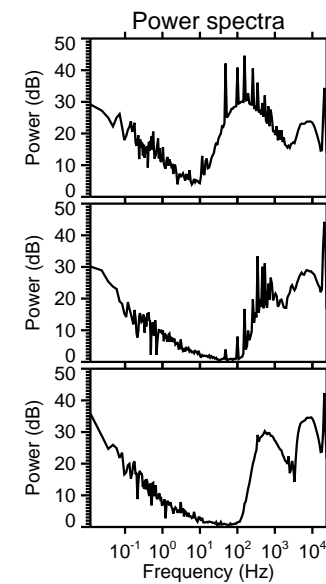
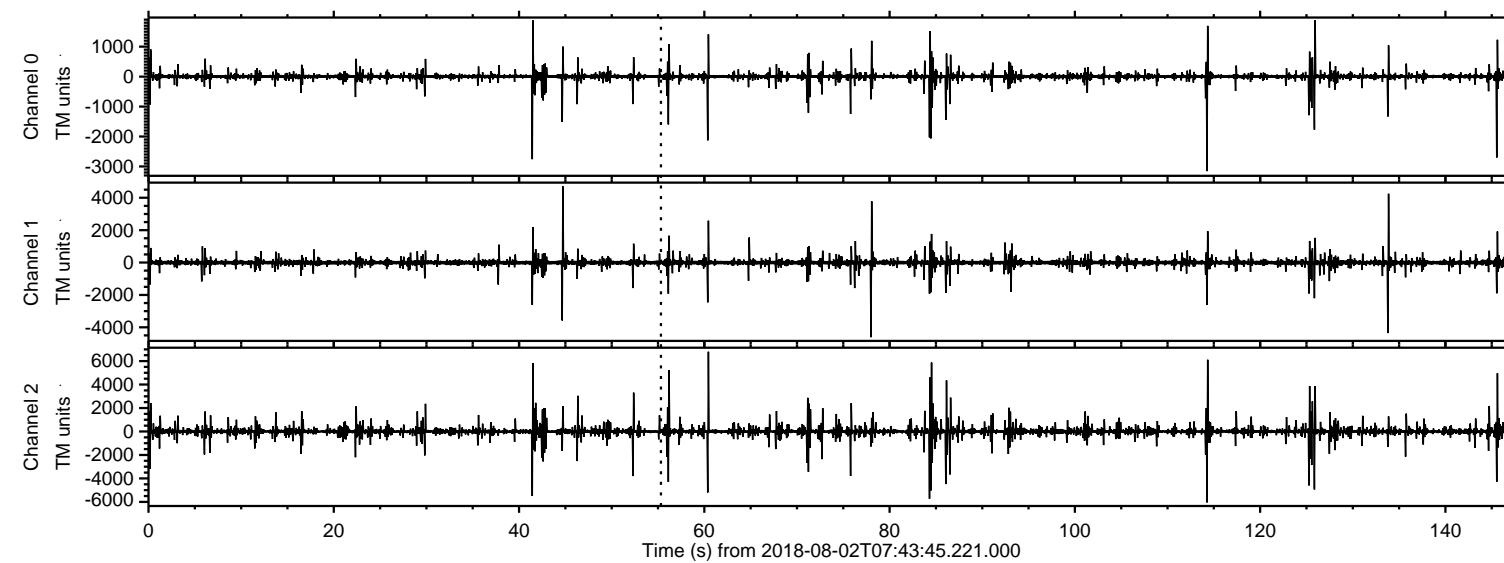
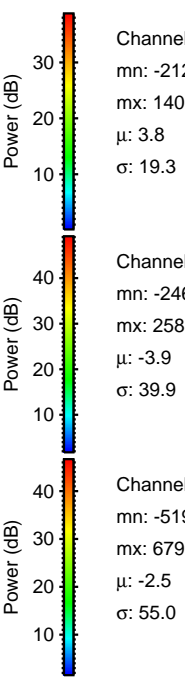
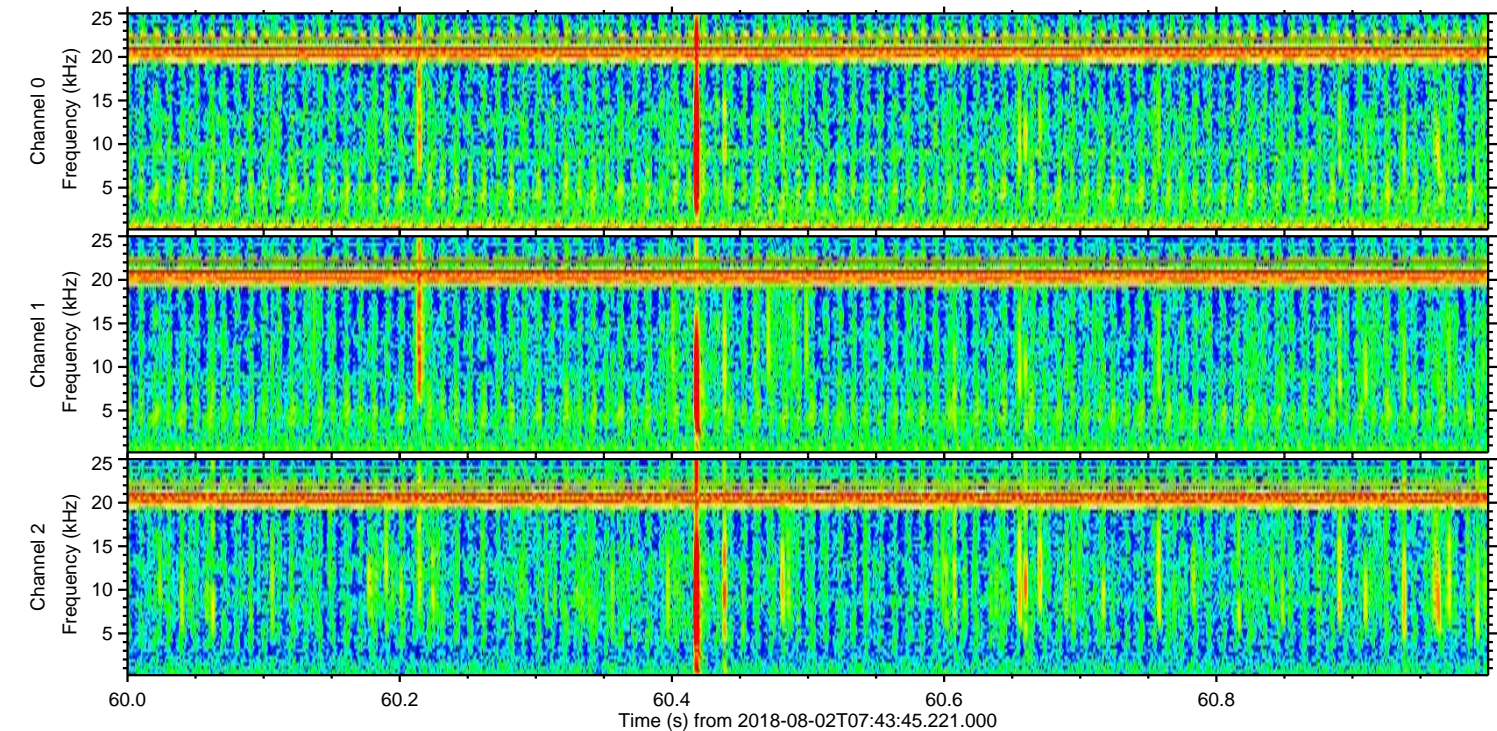
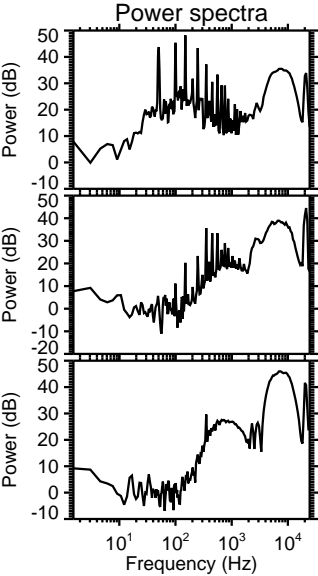
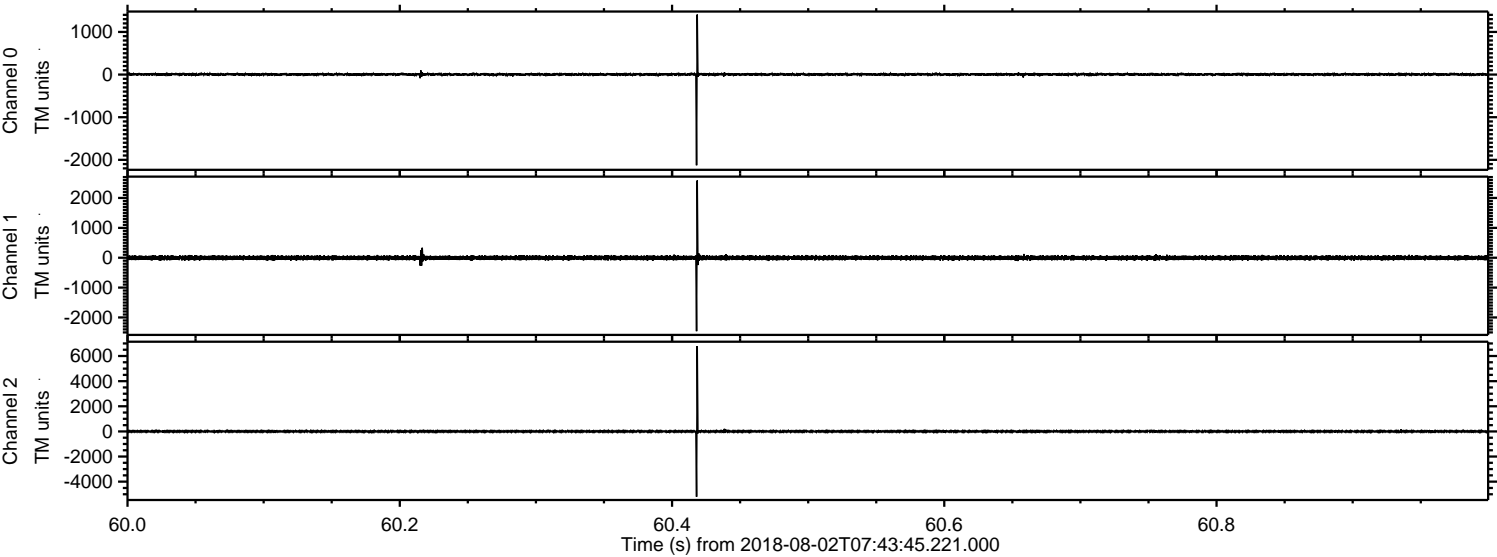


ELMAVAN 3D WAVEFORMS (Measured data sampled at 50 kHz) 50999 packets of 144 samples from 2018-08-02T07:43:45.221.000.

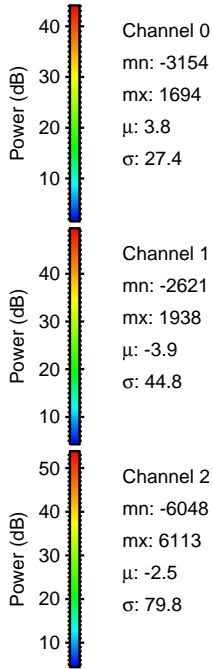
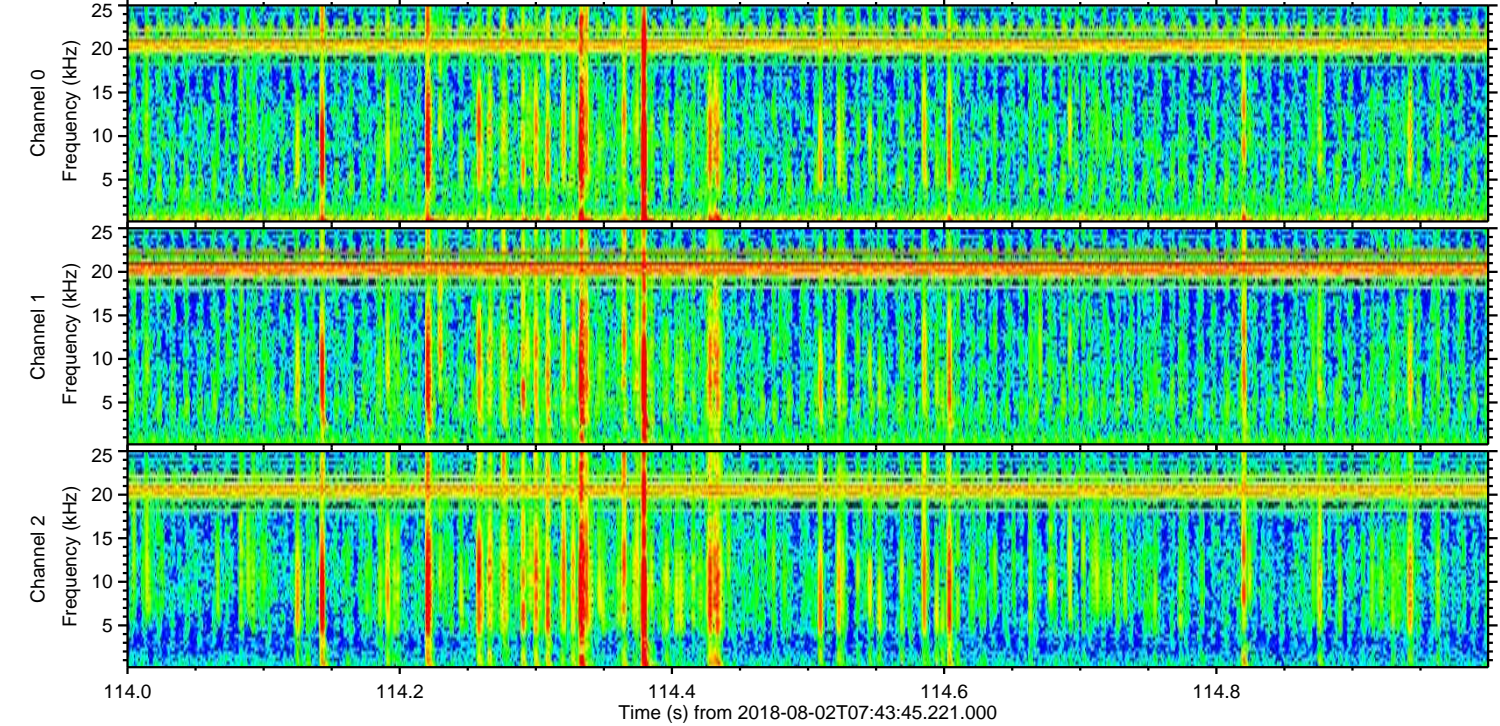
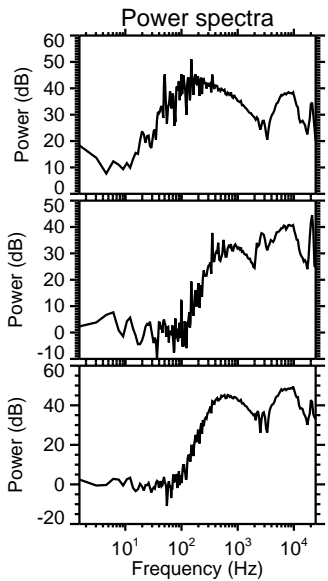
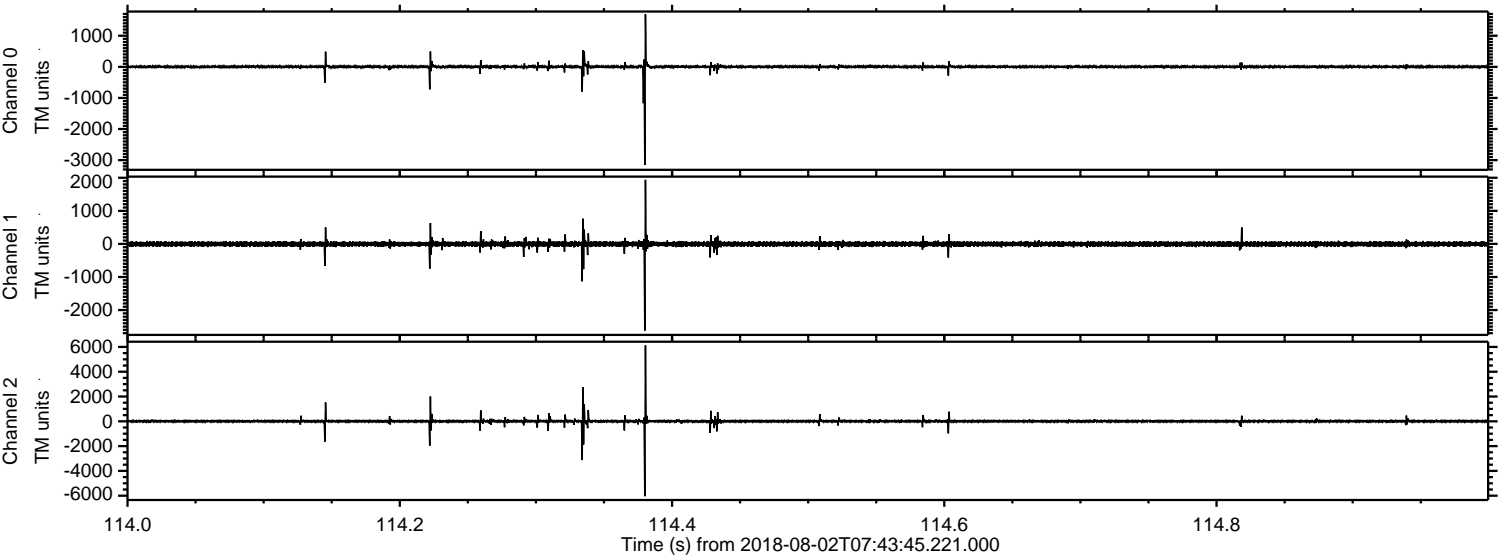
Processed Thu Aug 2 09:51:38 2018 by ELM ver.2012-10-06 from 001__elm20180802_074344__dat00.bin



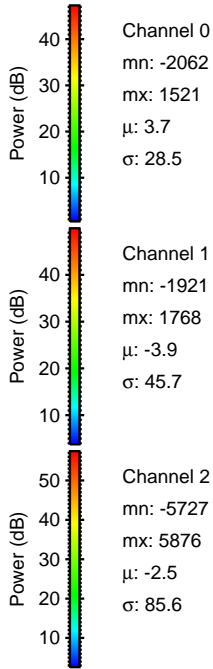
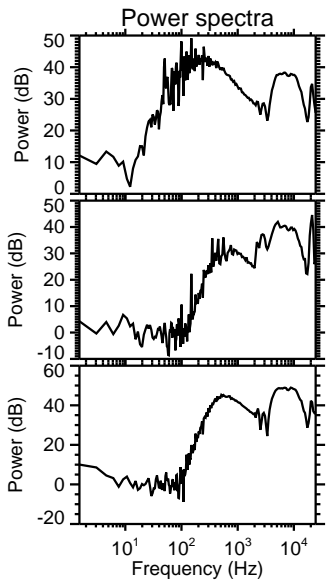
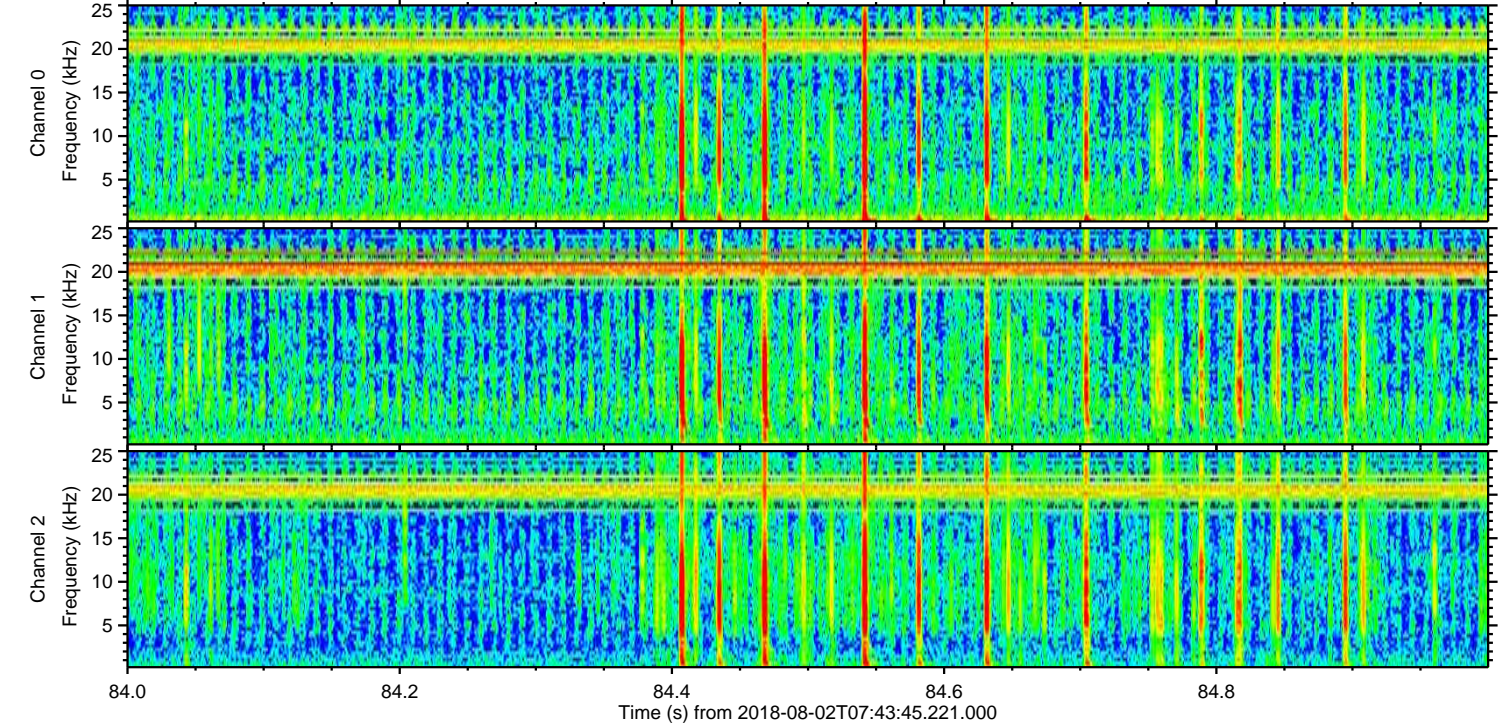
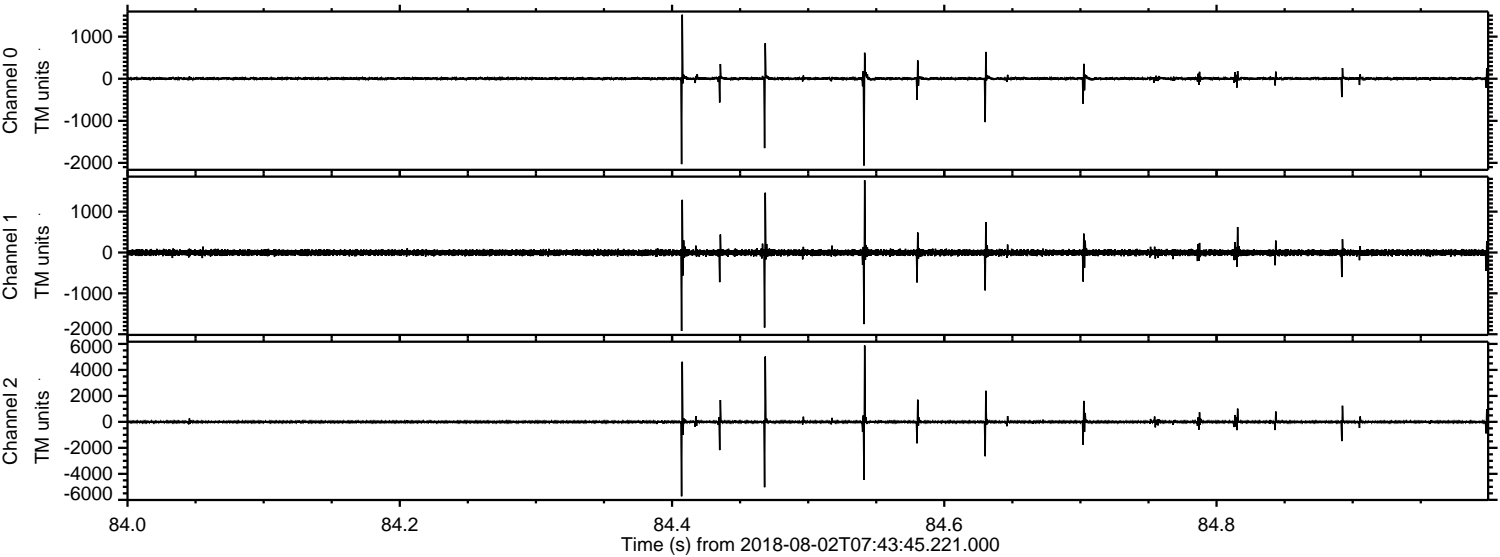
Processed Thu Aug 2 09:51:44 2018 by ELM ver.2012-10-06 from 001__elm20180802_074344__dat00.bin



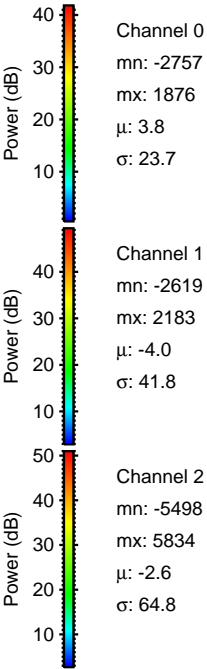
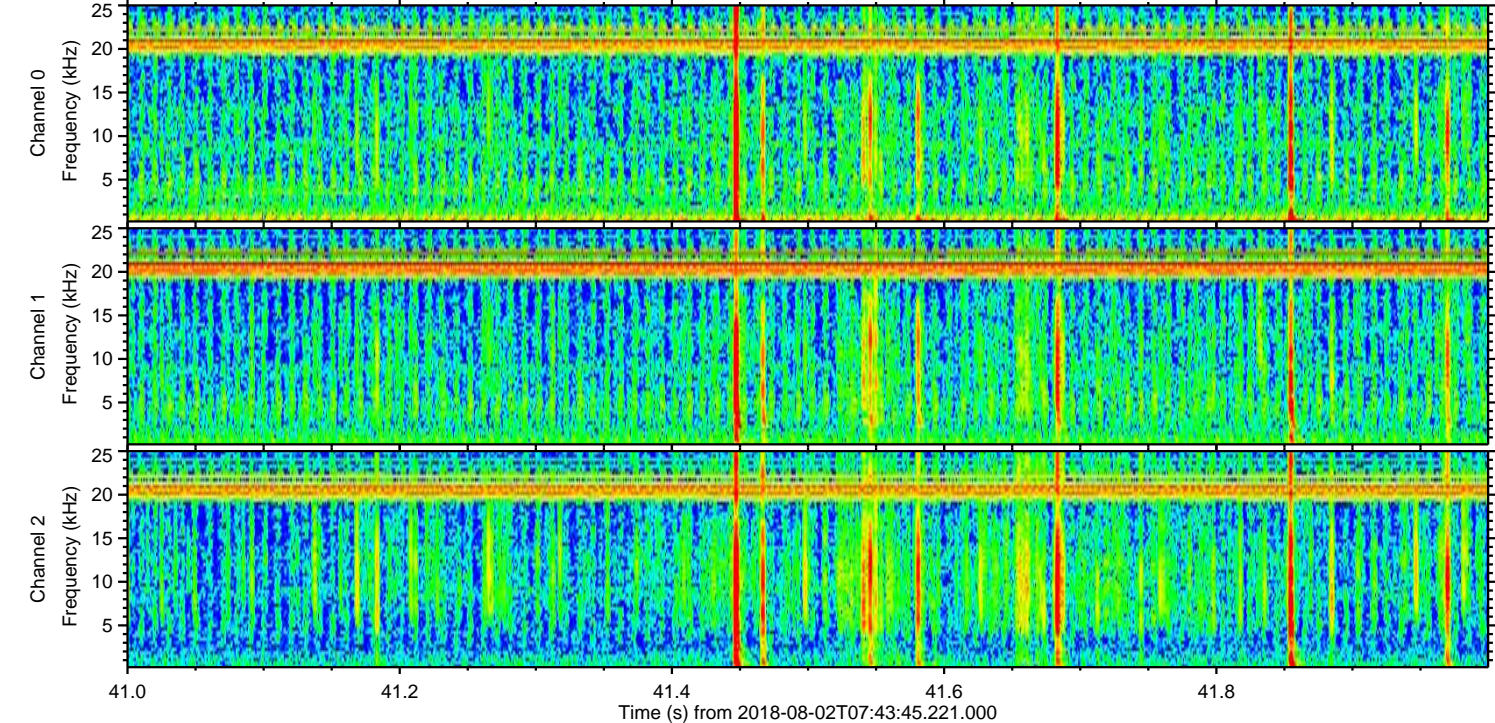
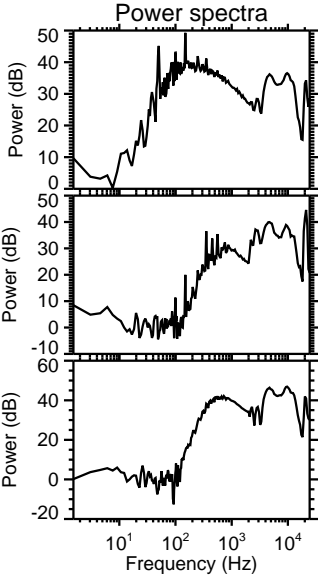
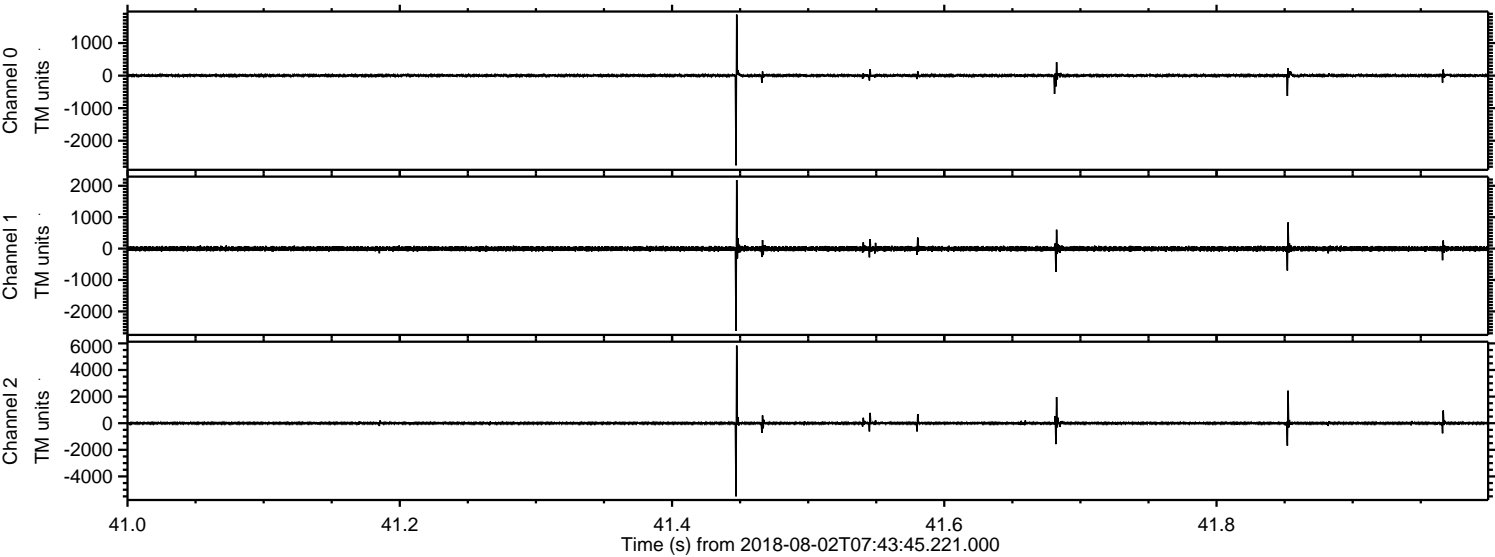
Processed Thu Aug 2 09:51:45 2018 by ELM ver.2012-10-06 from 001__elm20180802_074344__dat00.bin



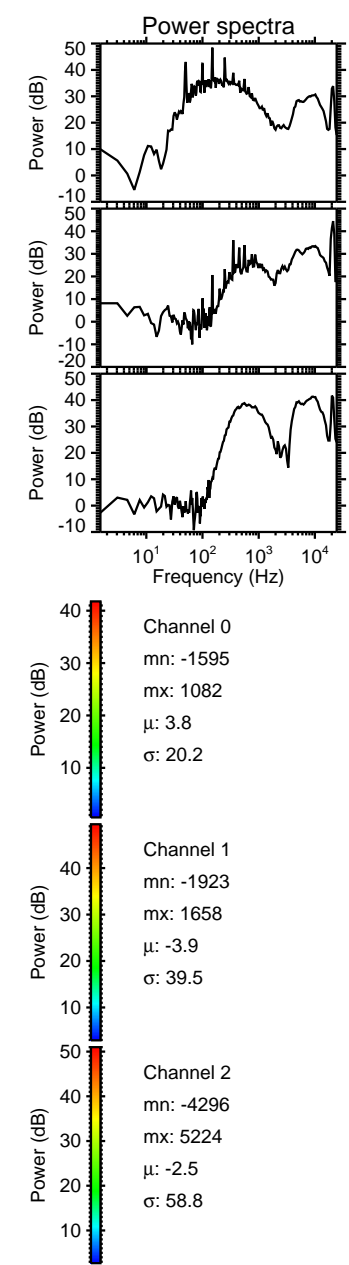
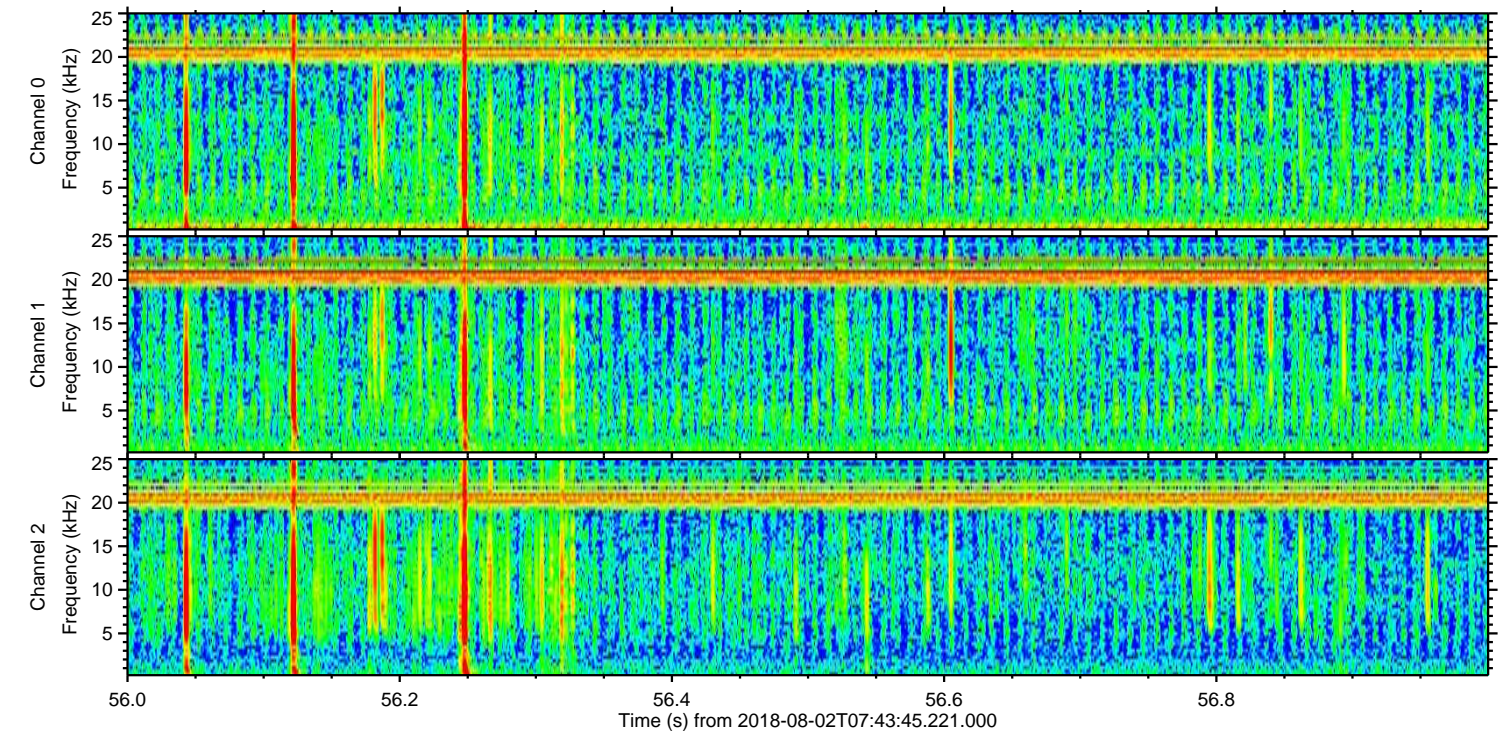
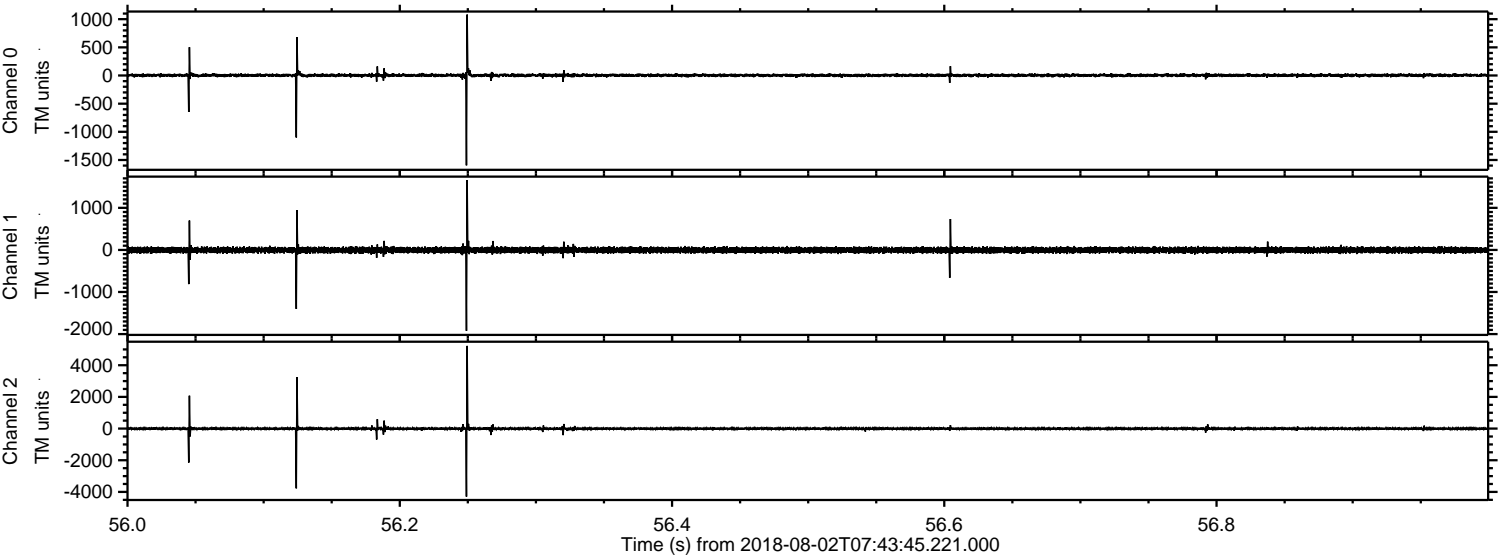
Processed Thu Aug 2 09:51:46 2018 by ELM ver.2012-10-06 from 001__elm20180802_074344__dat00.bin



Processed Thu Aug 2 09:51:47 2018 by ELM ver.2012-10-06 from 001__elm20180802_074344__dat00.bin

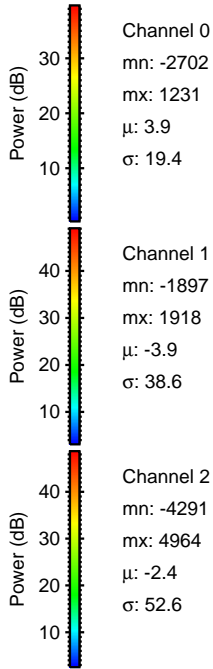
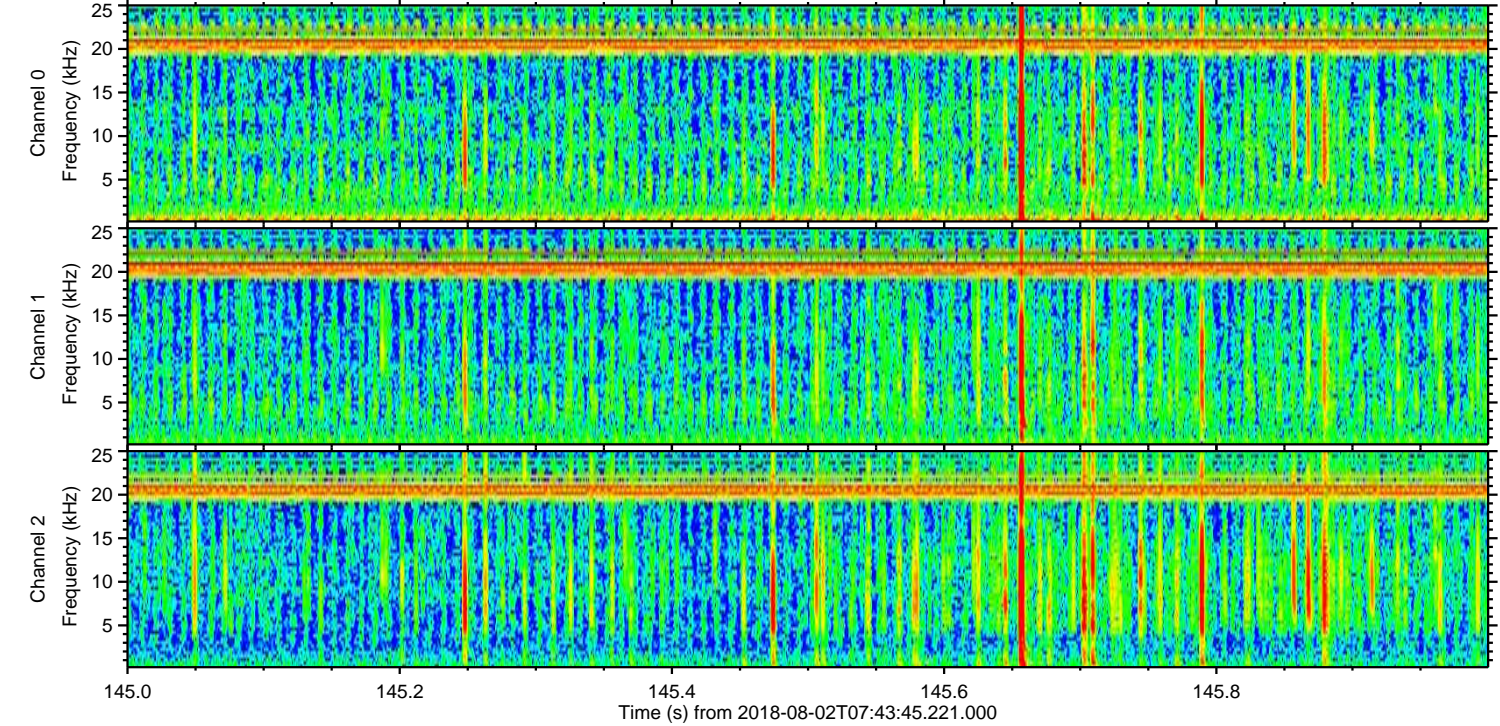
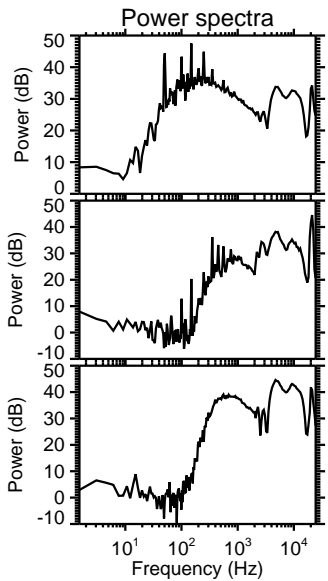
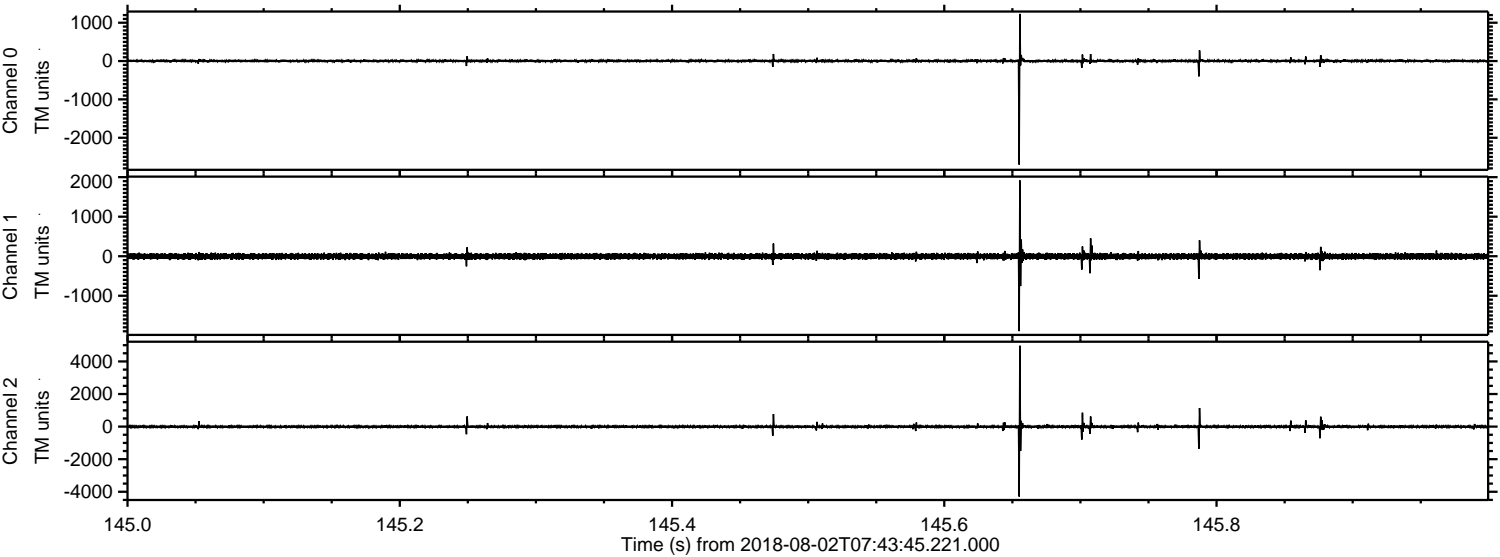


Processed Thu Aug 2 09:51:47 2018 by ELM ver.2012-10-06 from 001__elm20180802_074344__dat00.bin



ELMAVAN 3D WAVEFORMS (Measured data sampled at 50 kHz) 50999 packets of 144 samples from 2018-08-02T07:43:45.221.000. Part 146/147

Processed Thu Aug 2 09:51:48 2018 by ELM ver.2012-10-06 from 001__elm20180802_074344__dat00.bin



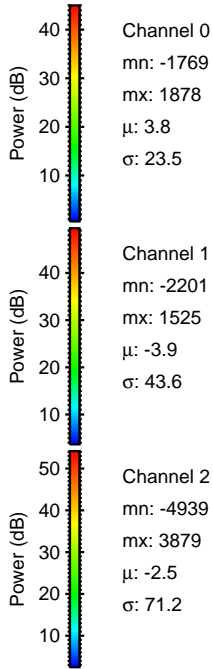
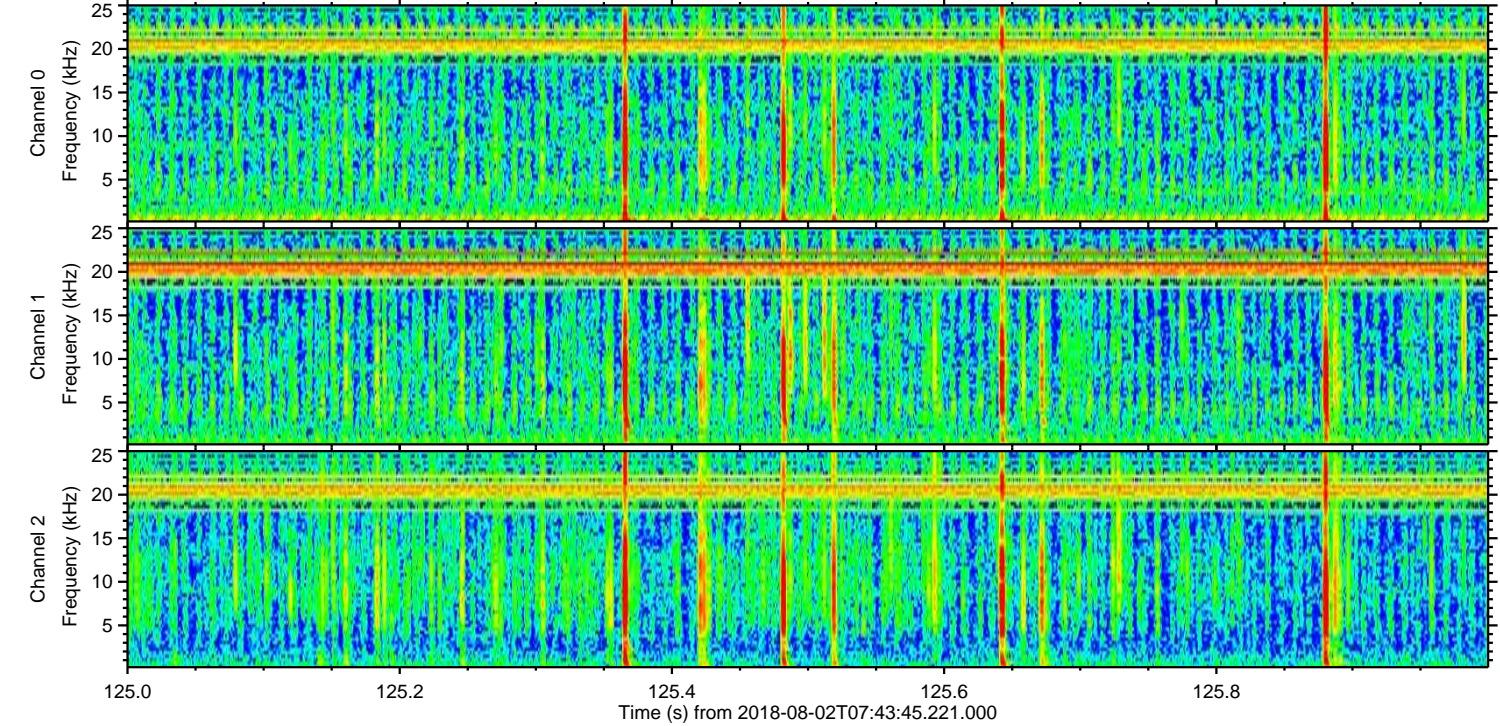
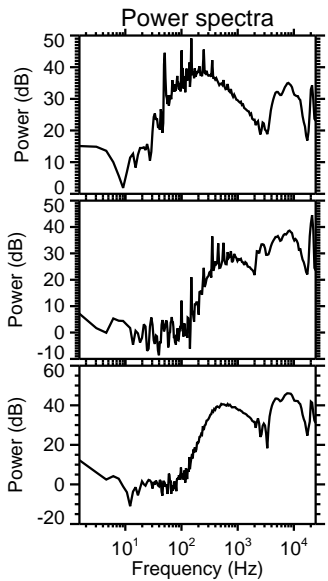
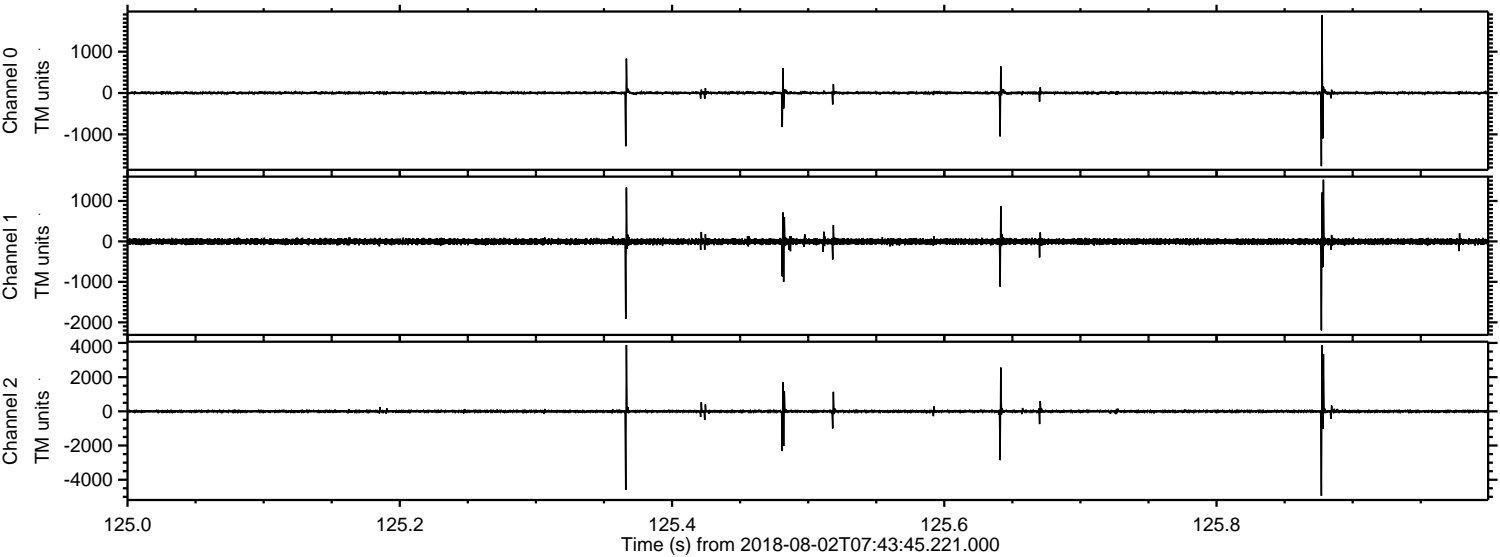
Channel 0
mn: -2702
mx: 1231
 μ : 3.9
 σ : 19.4

Channel 1
mn: -1897
mx: 1918
 μ : -3.9
 σ : 38.6

Channel 2
mn: -4291
mx: 4964
 μ : -2.4
 σ : 52.6

ELMAVAN 3D WAVEFORMS (Measured data sampled at 50 kHz) 50999 packets of 144 samples from 2018-08-02T07:43:45.221.000. Part 126/147

Processed Thu Aug 2 09:51:49 2018 by ELM ver.2012-10-06 from 001__elm20180802_074344__dat00.bin

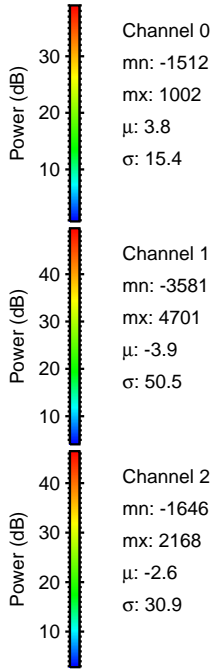
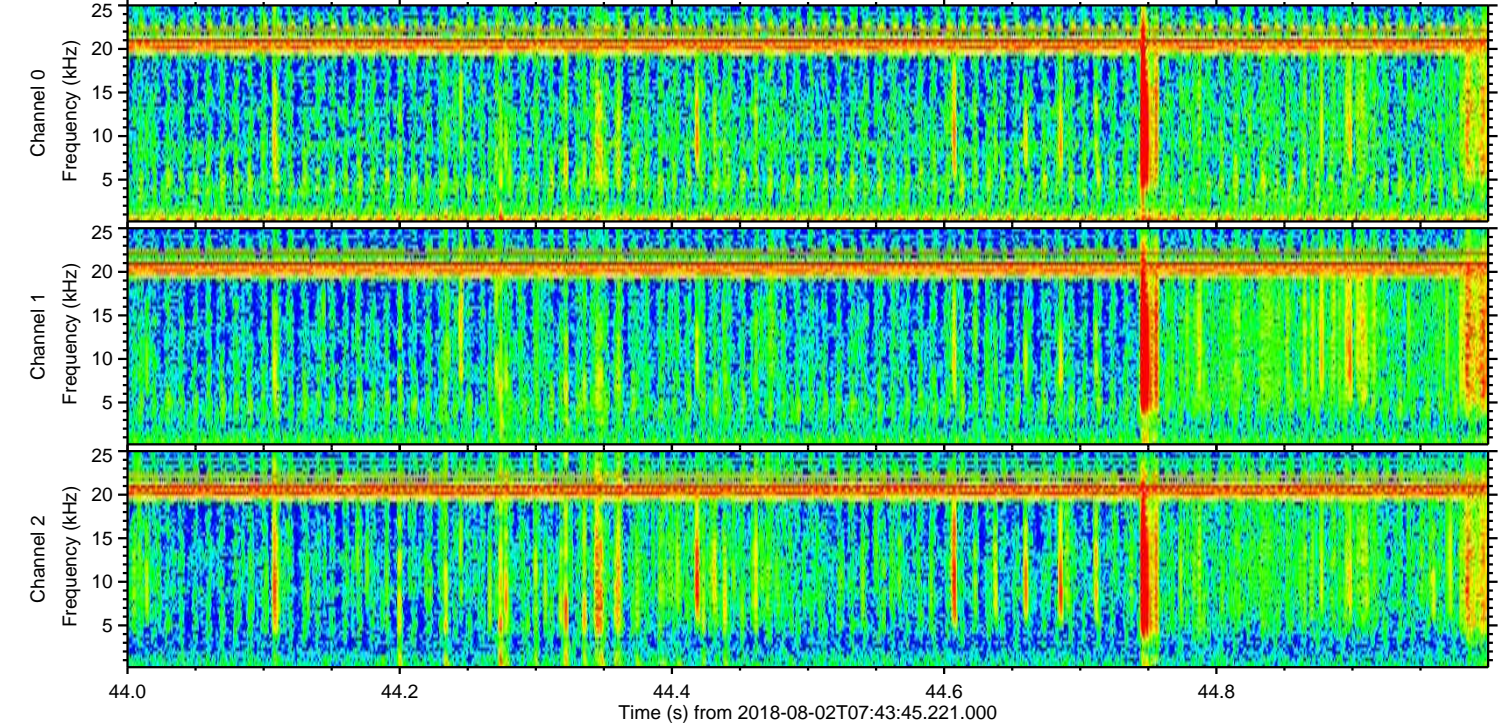
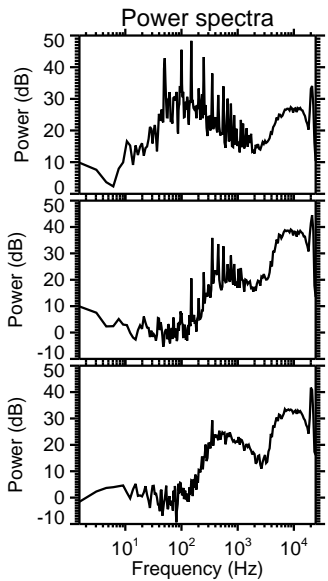
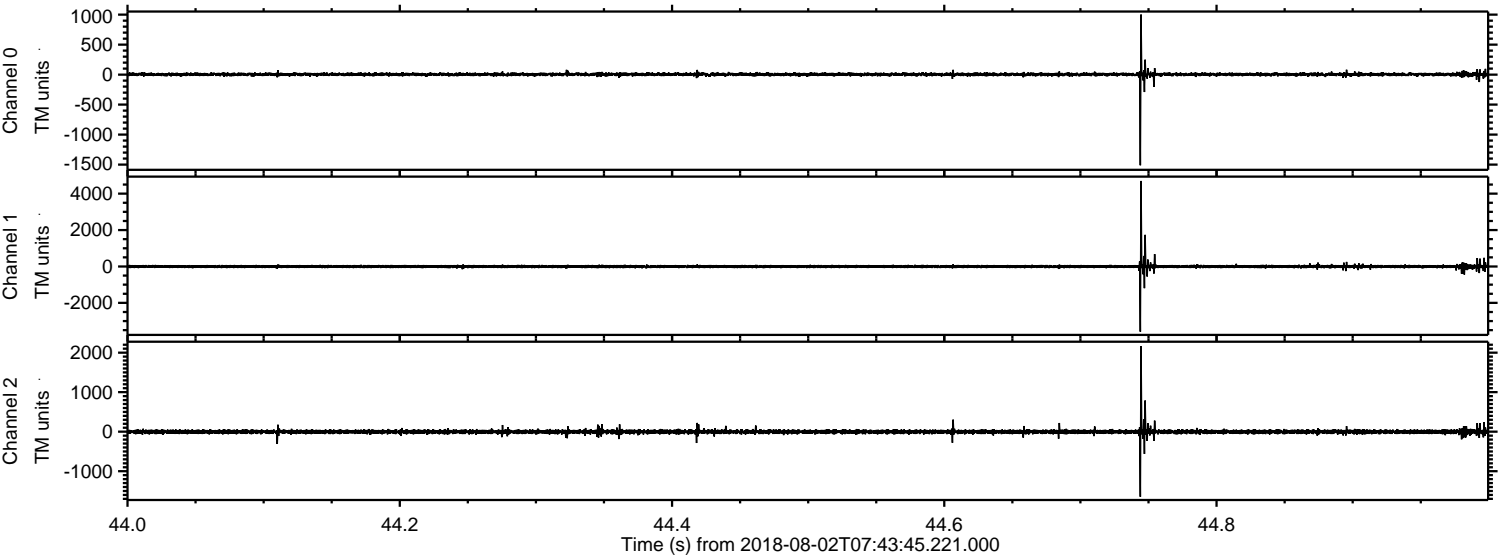


Channel 0
mn: -1769
mx: 1878
 μ : 3.8
 σ : 23.5

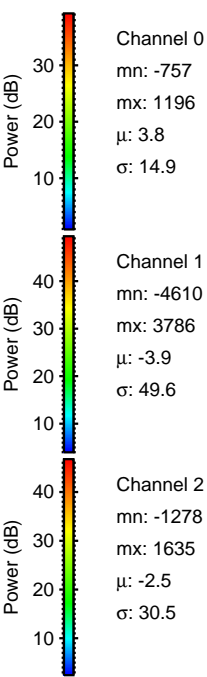
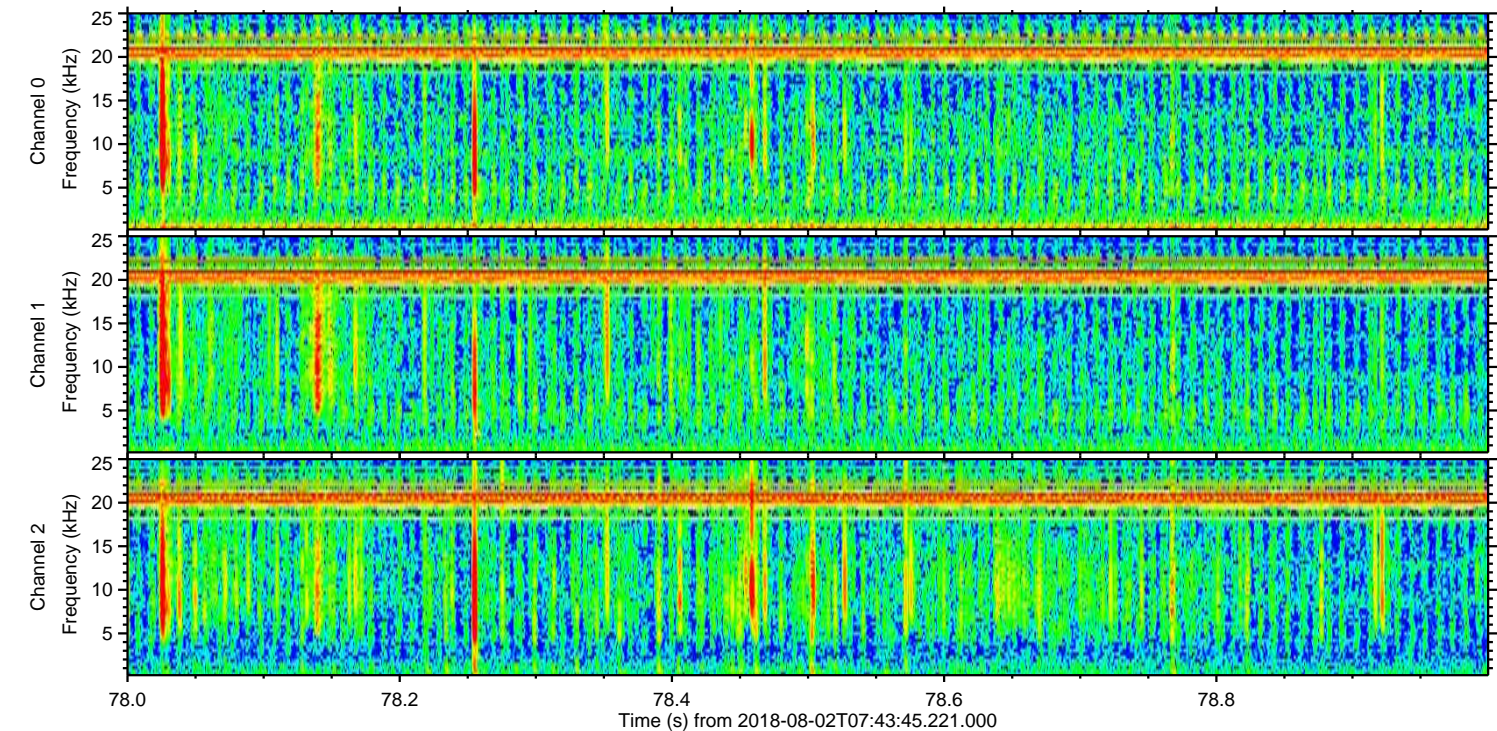
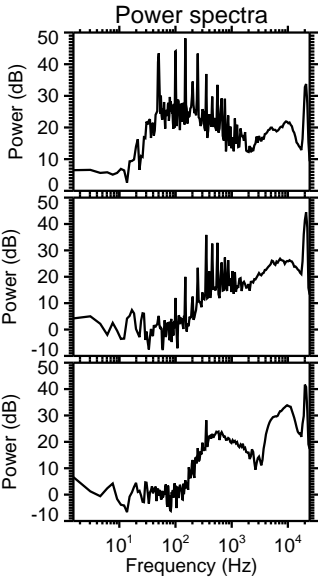
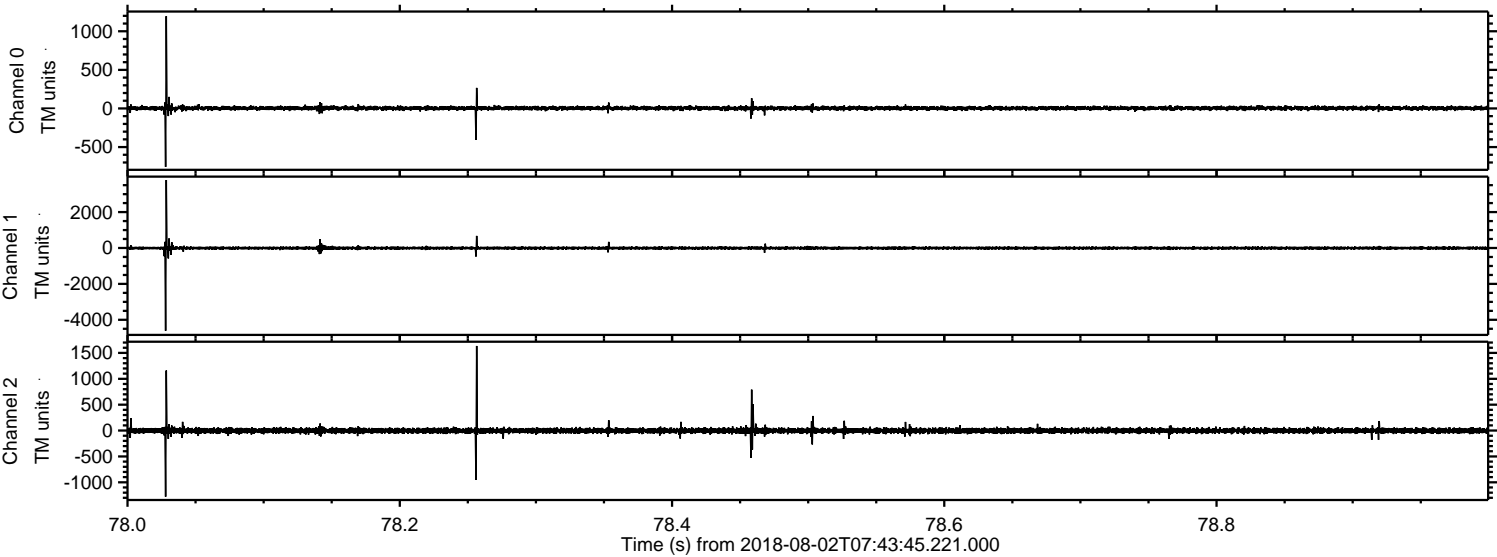
Channel 1
mn: -2201
mx: 1525
 μ : -3.9
 σ : 43.6

Channel 2
mn: -4939
mx: 3879
 μ : -2.5
 σ : 71.2

Processed Thu Aug 2 09:51:49 2018 by ELM ver.2012-10-06 from 001__elm20180802_074344__dat00.bin



Processed Thu Aug 2 09:51:50 2018 by ELM ver.2012-10-06 from 001__elm20180802_074344__dat00.bin



Processed Thu Aug 2 09:51:51 2018 by ELM ver.2012-10-06 from 001__elm20180802_074344__dat00.bin

