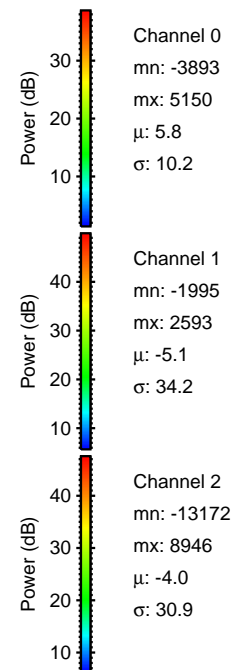
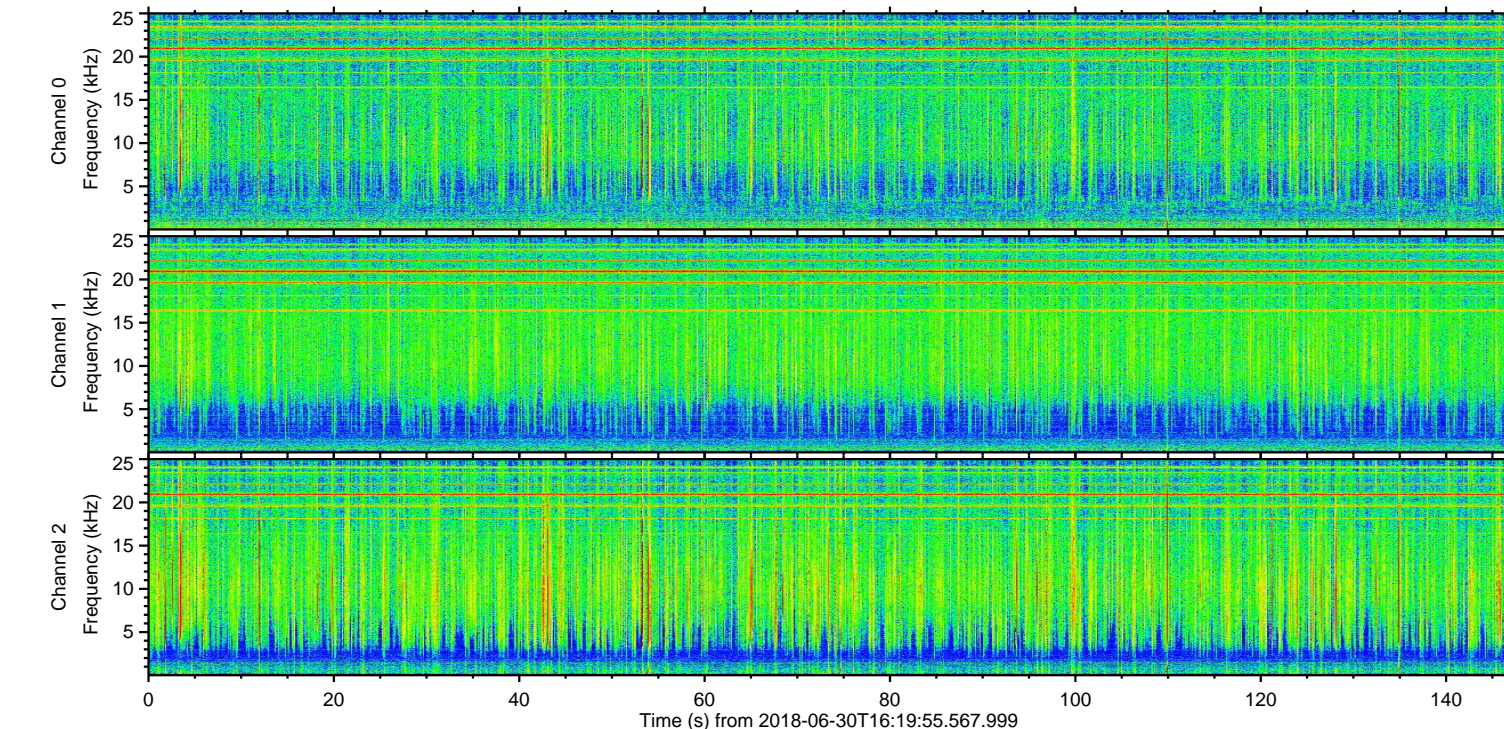
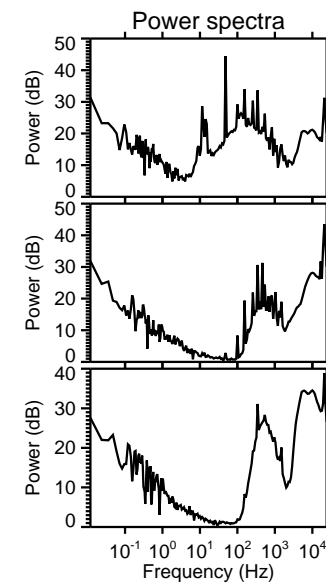
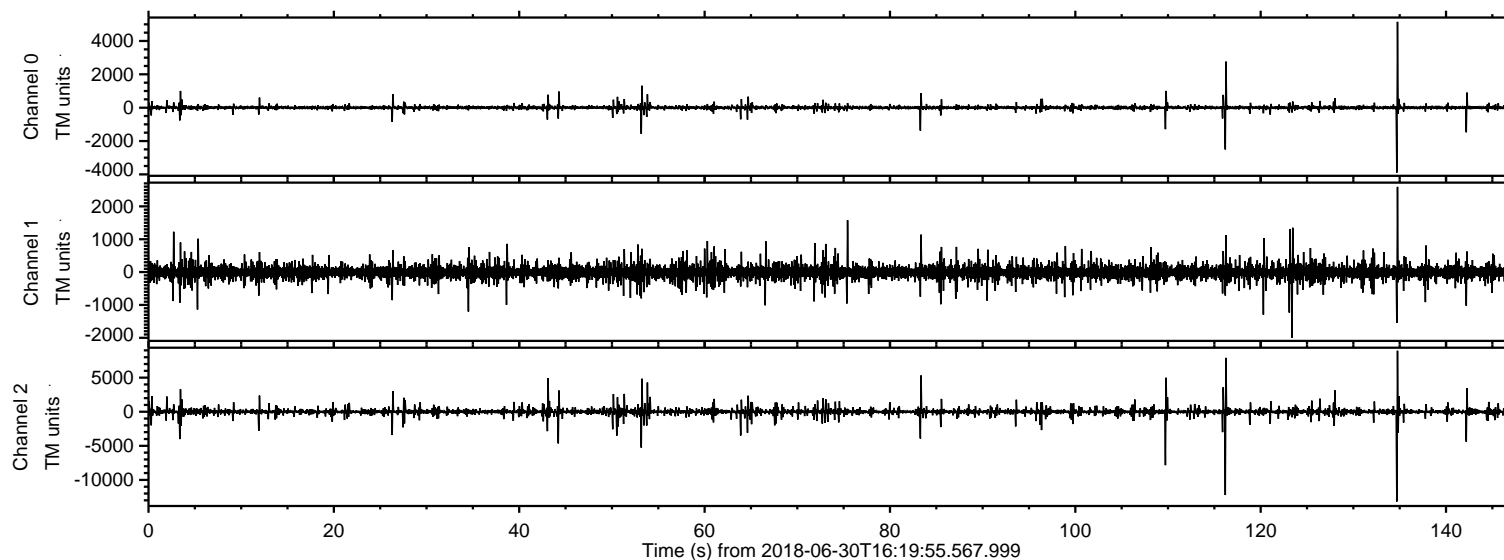


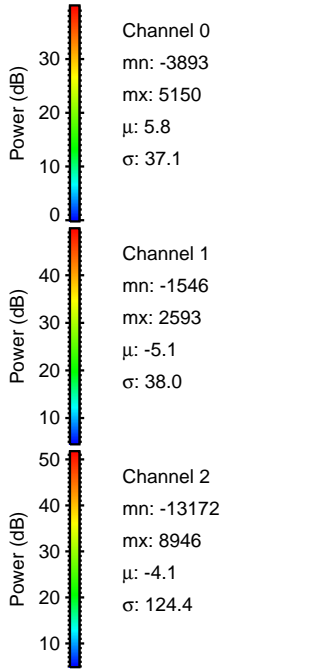
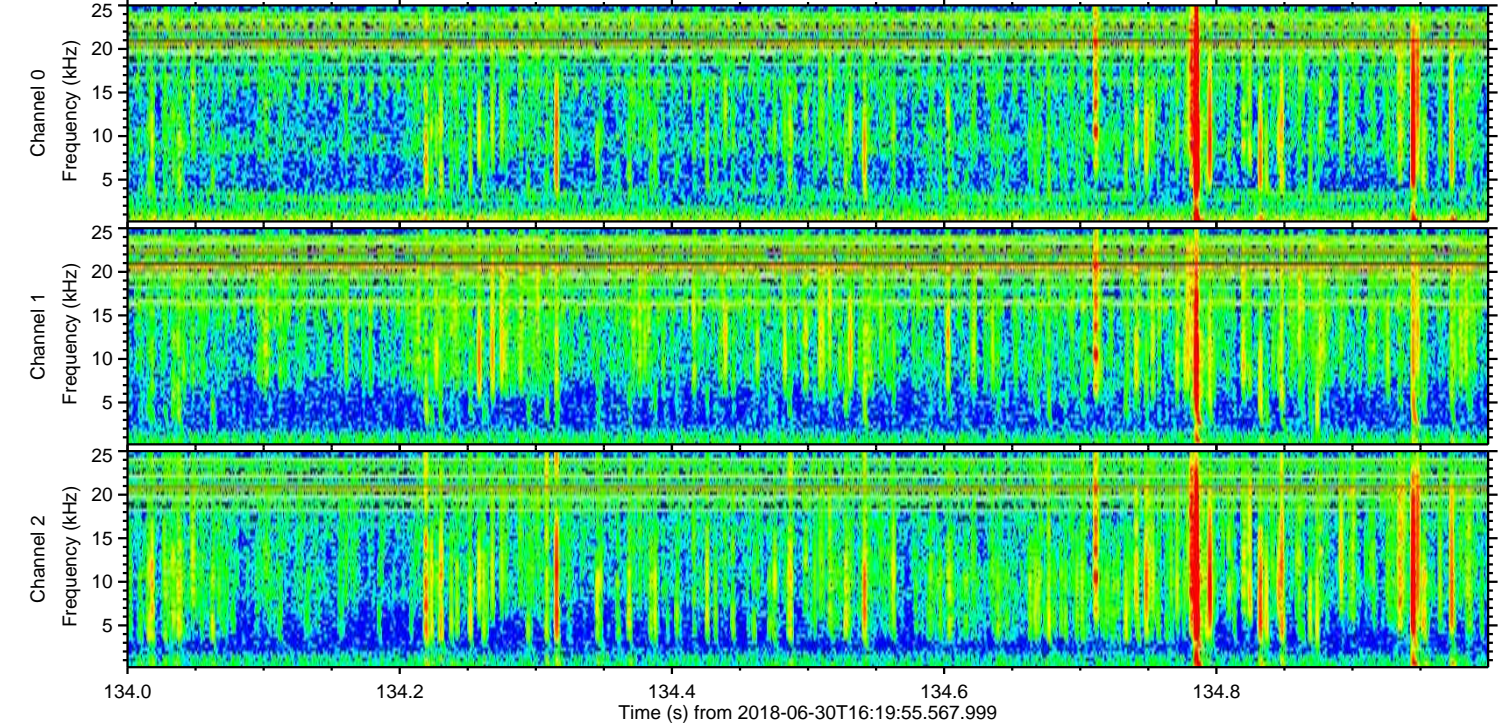
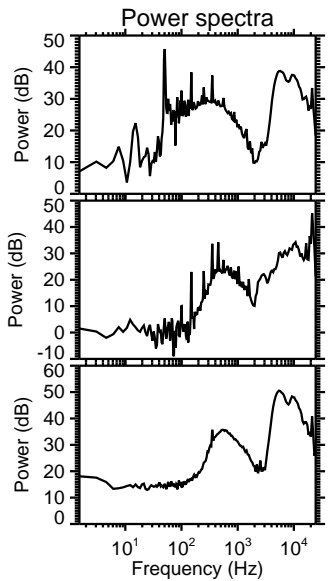
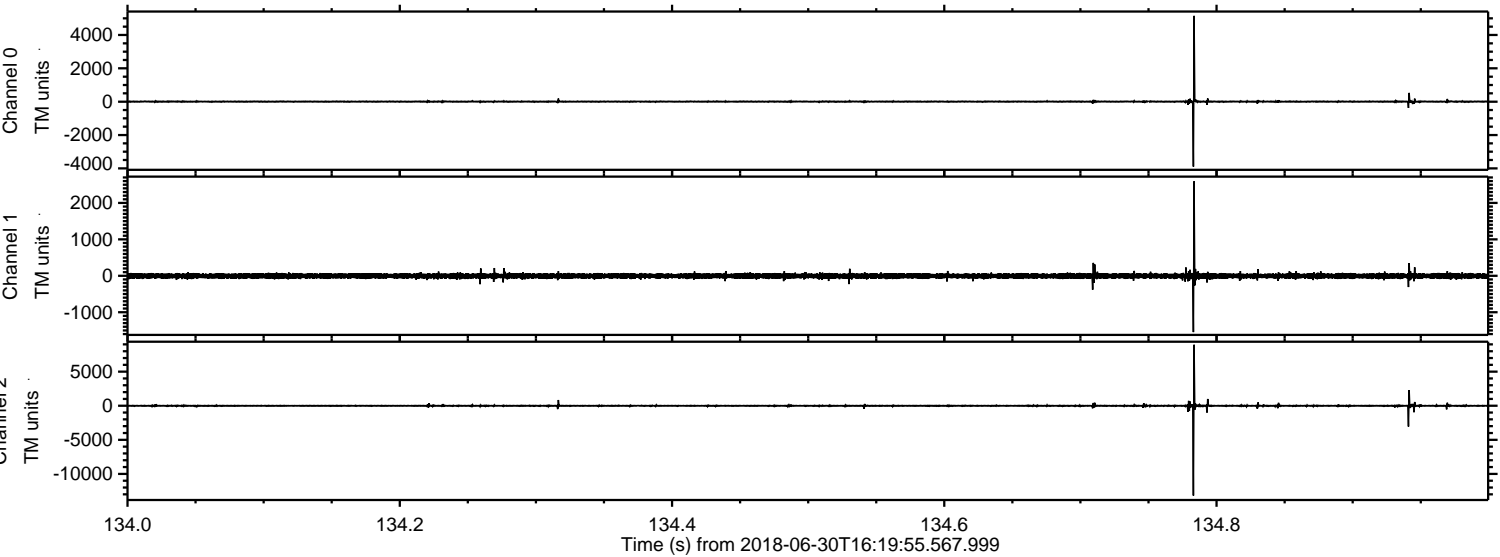
ELMAVAN 3D WAVEFORMS (Measured data sampled at 50 kHz) 51000 packets of 144 samples from 2018-06-30T16:19:55.567.999.

Processed Sat Jun 30 18:27:19 2018 by ELM ver.2012-10-06 from 001__elm20180630_161954__dat00.bin



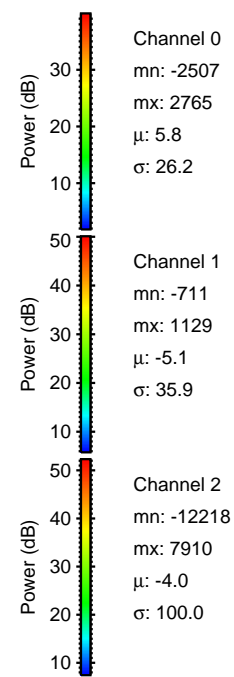
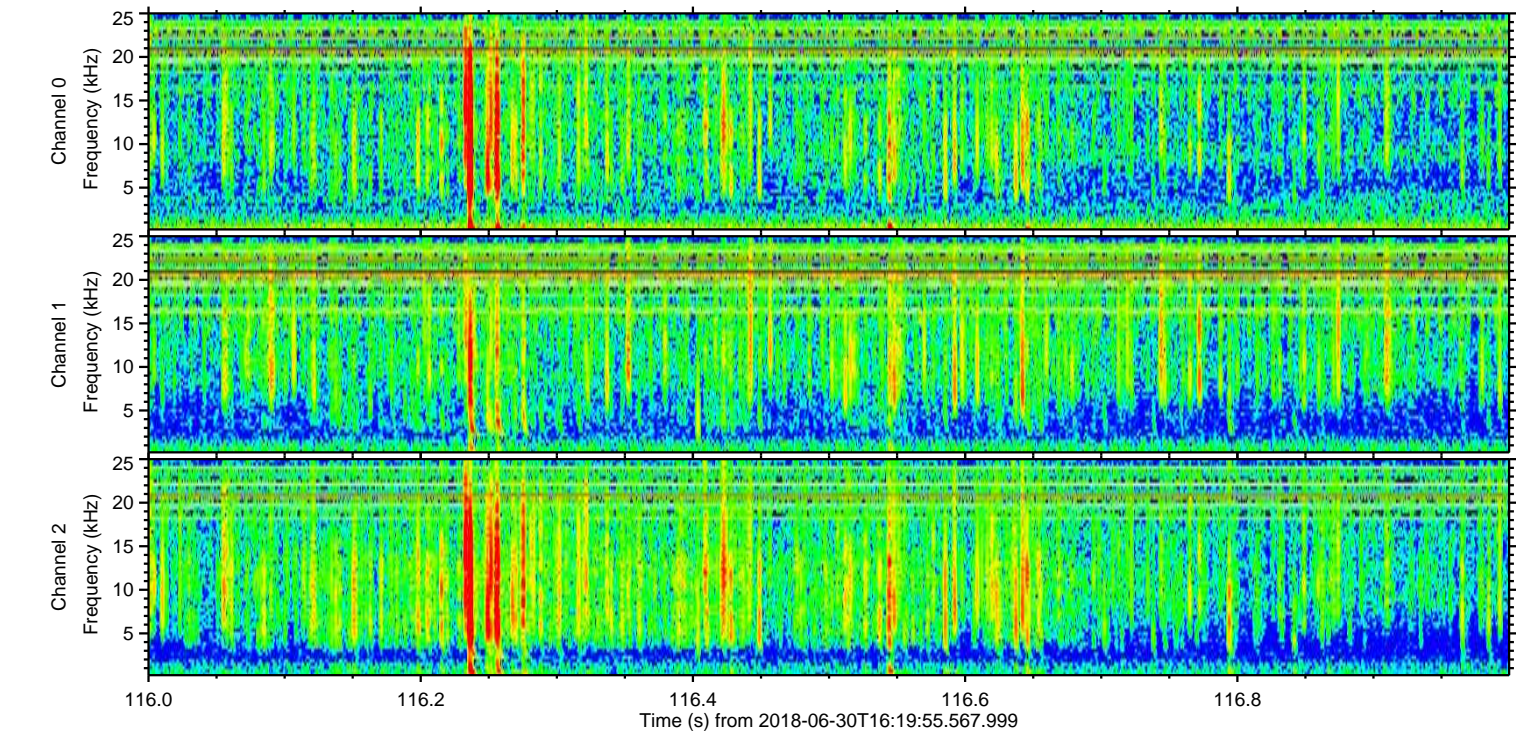
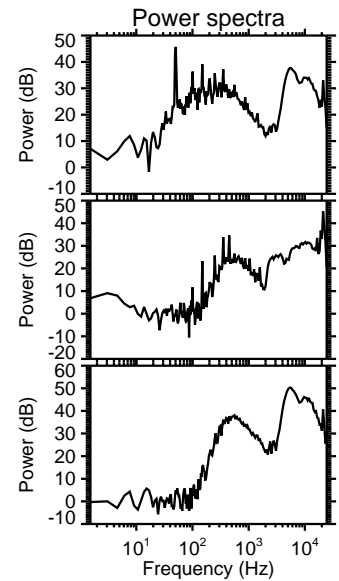
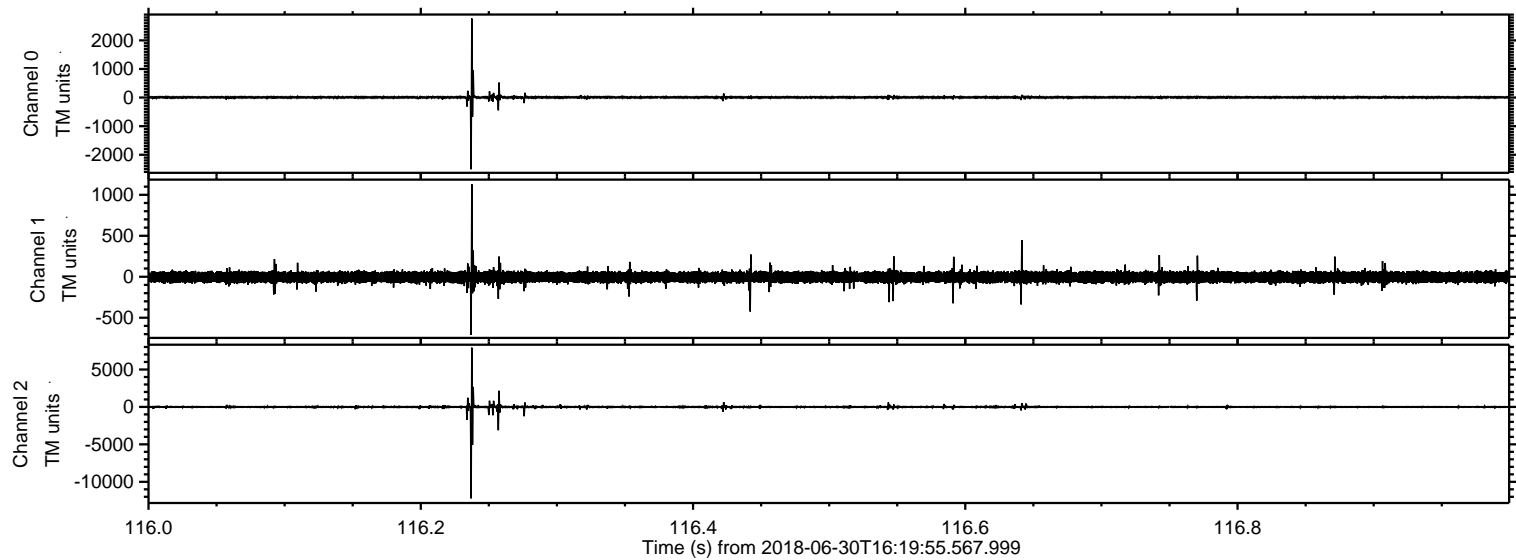
ELMAVAN 3D WAVEFORMS (Measured data sampled at 50 kHz) 51000 packets of 144 samples from 2018-06-30T16:19:55.567.999. Part 135/147

Processed Sat Jun 30 18:27:26 2018 by ELM ver.2012-10-06 from 001__elm20180630_161954__dat00.bin



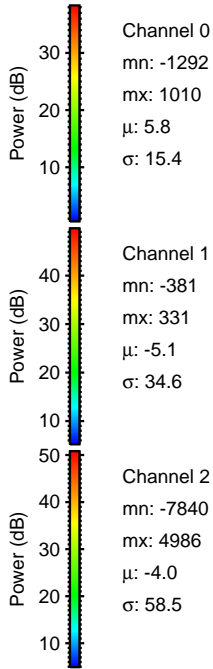
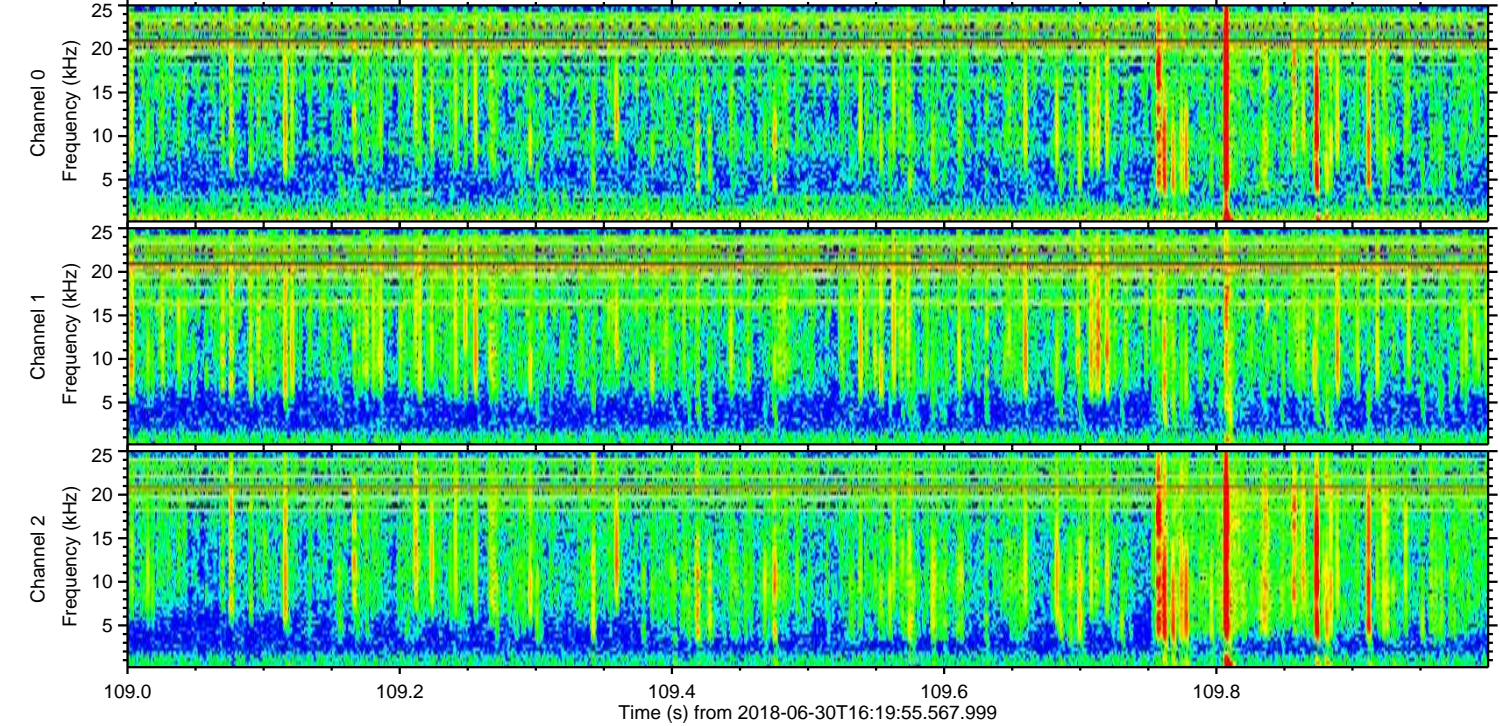
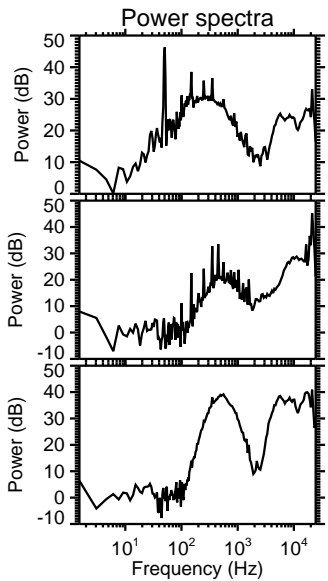
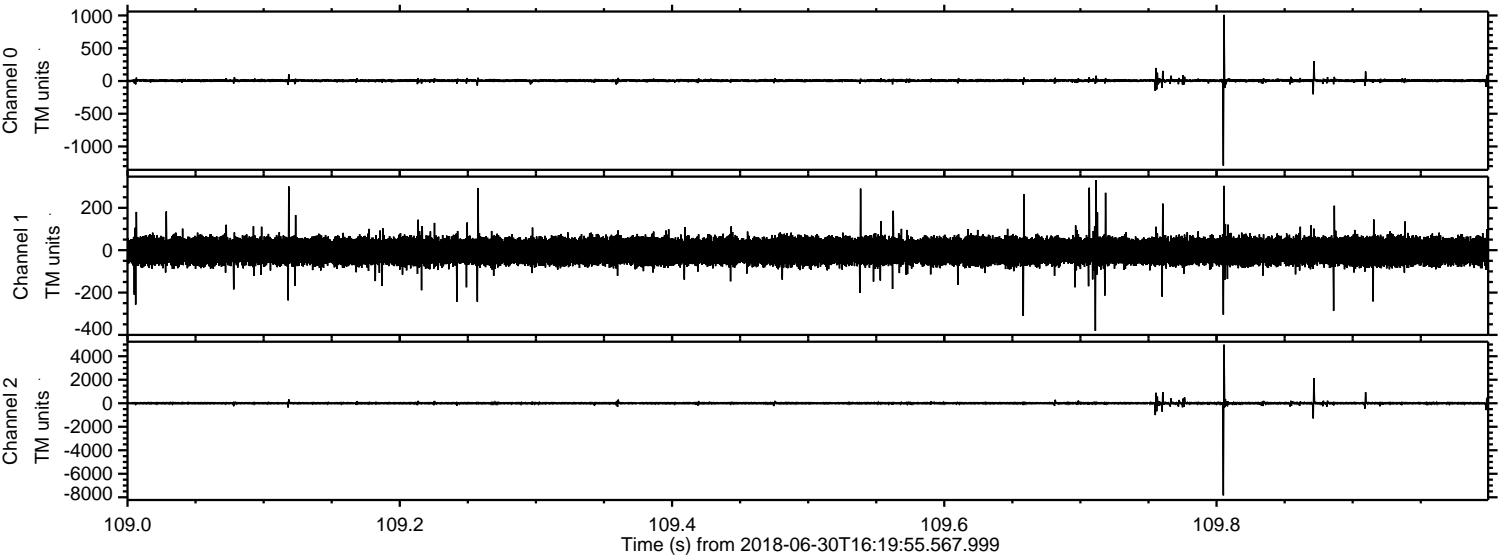
ELMAVAN 3D WAVEFORMS (Measured data sampled at 50 kHz) 51000 packets of 144 samples from 2018-06-30T16:19:55.567.999. Part 117/147

Processed Sat Jun 30 18:27:27 2018 by ELM ver.2012-10-06 from 001__elm20180630_161954__dat00.bin

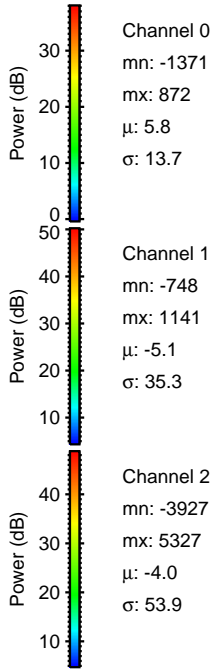
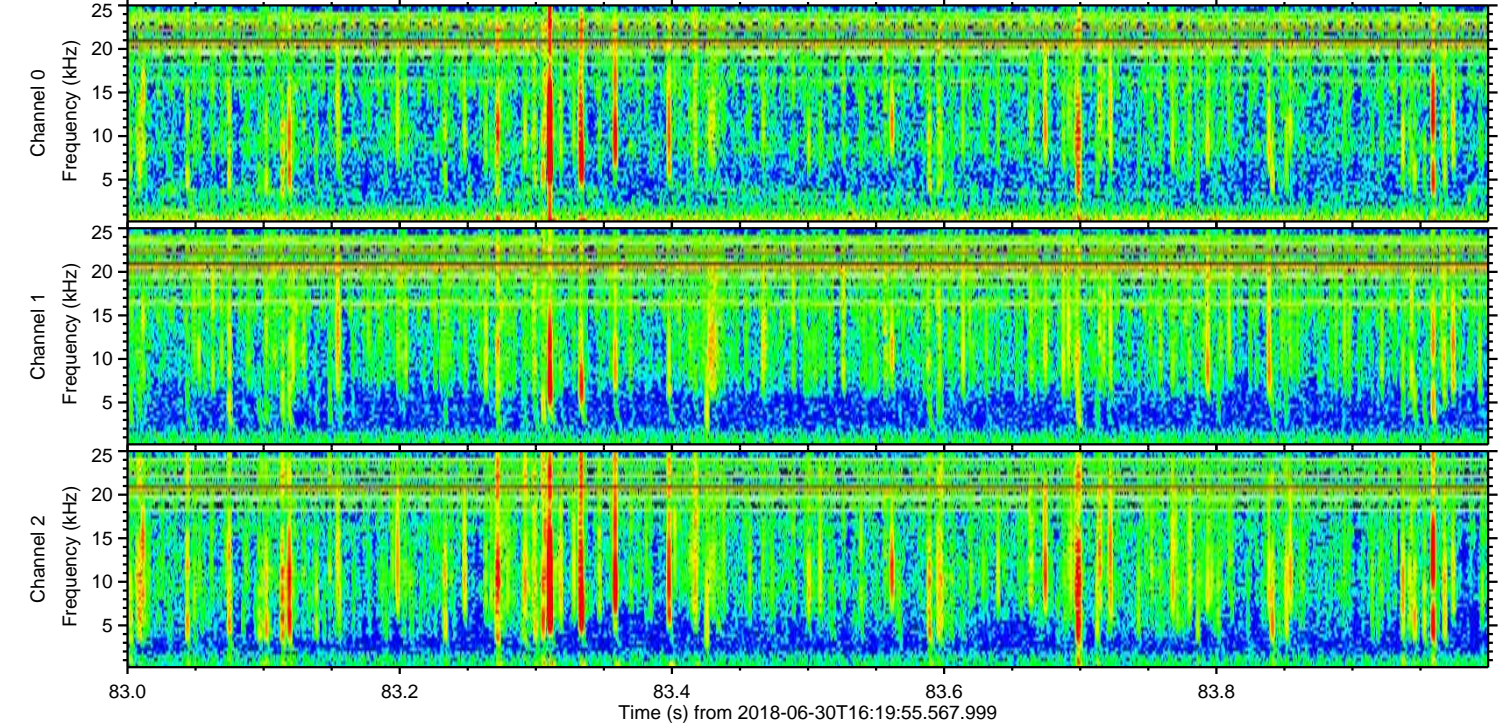
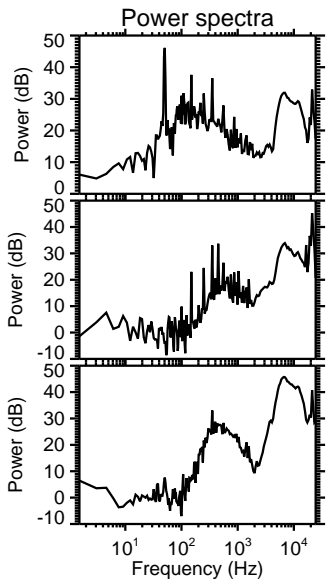
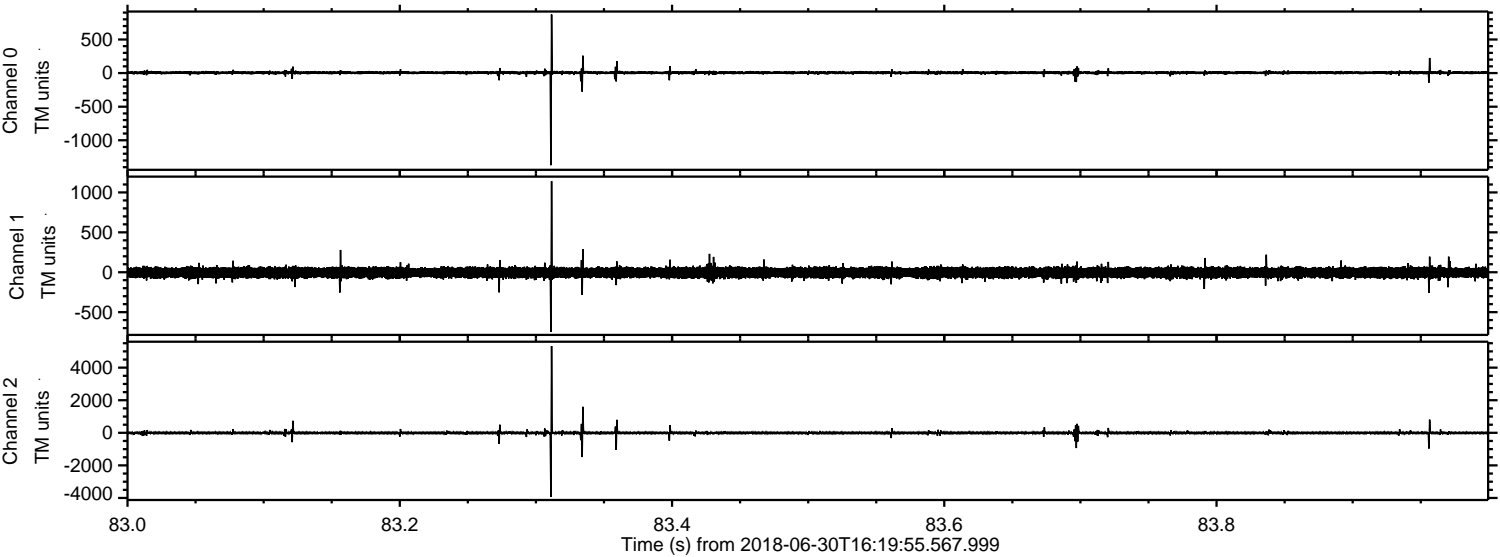


ELMAVAN 3D WAVEFORMS (Measured data sampled at 50 kHz) 51000 packets of 144 samples from 2018-06-30T16:19:55.567.999. Part 110/147

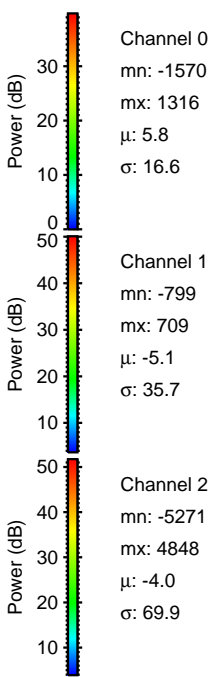
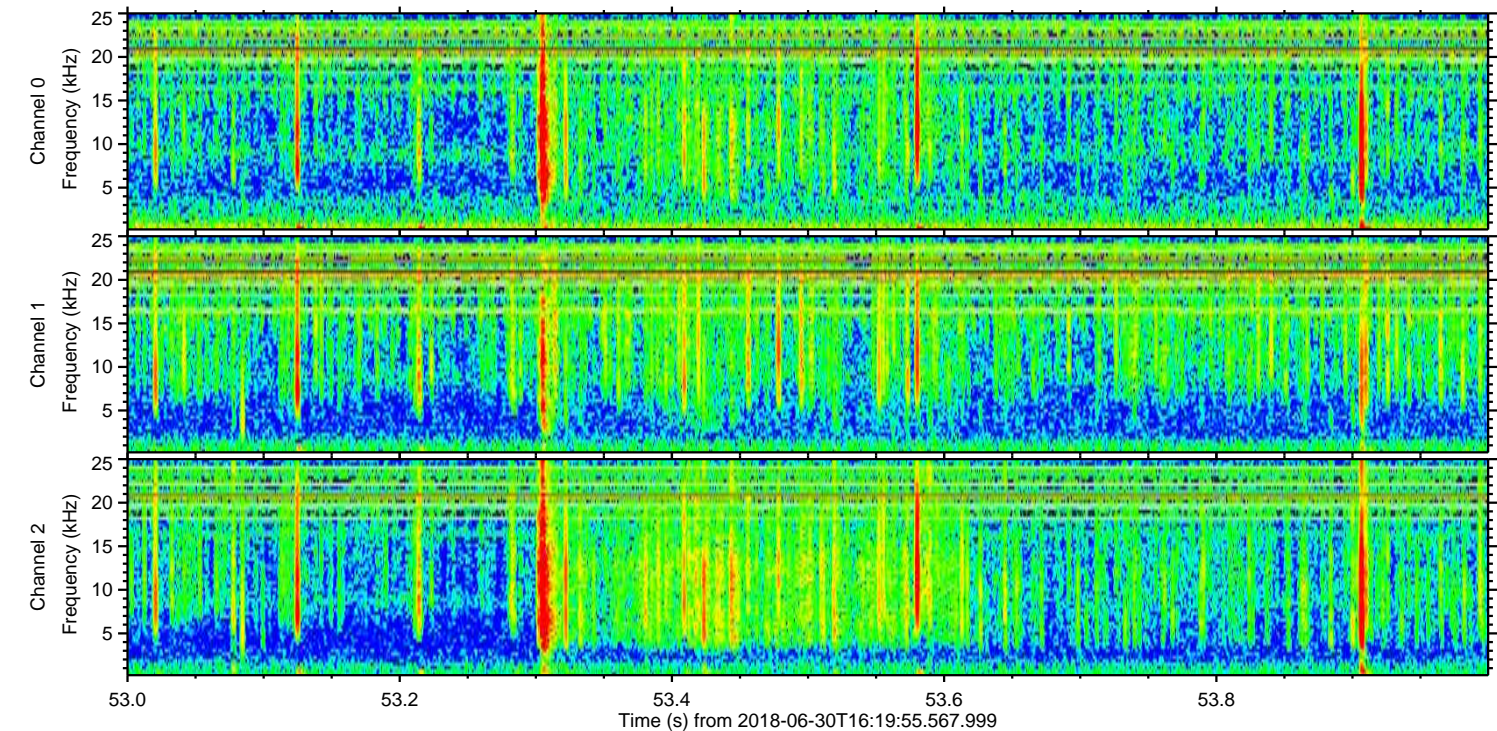
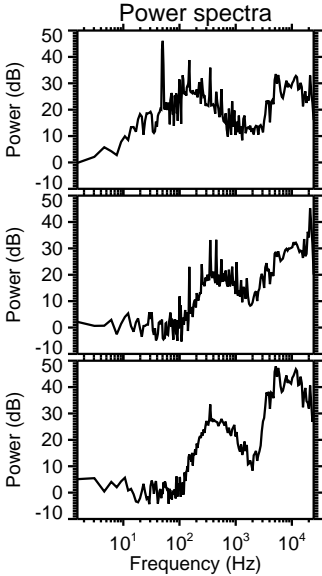
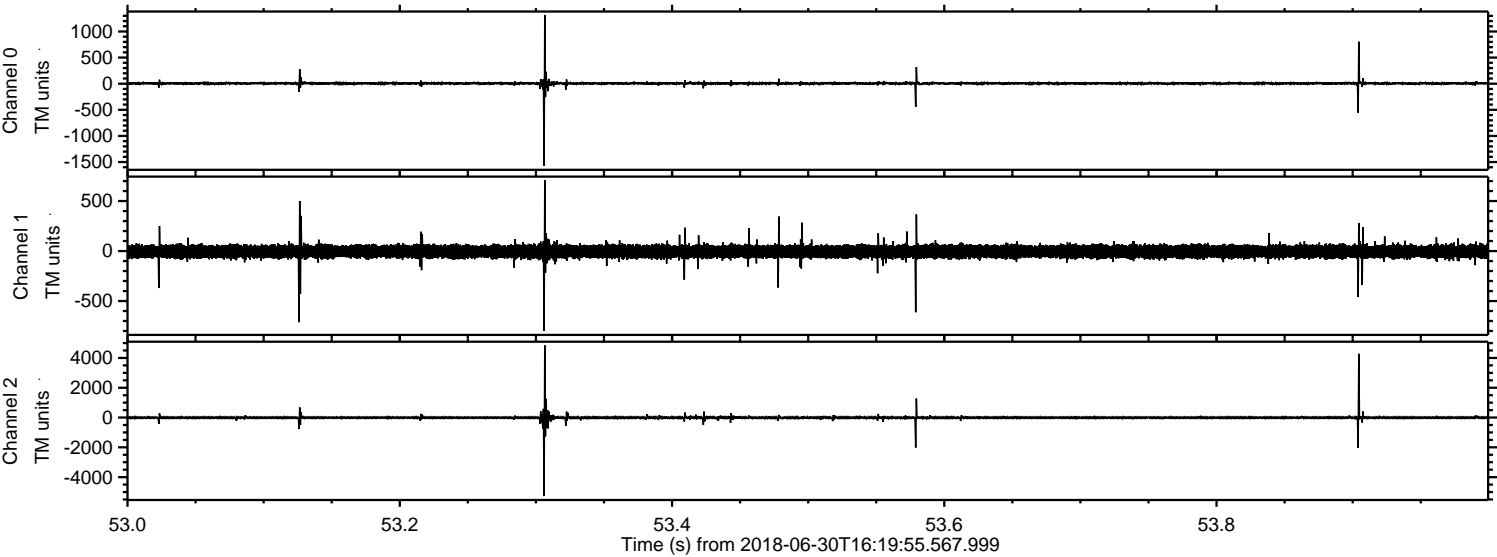
Processed Sat Jun 30 18:27:28 2018 by ELM ver.2012-10-06 from 001__elm20180630_161954__dat00.bin



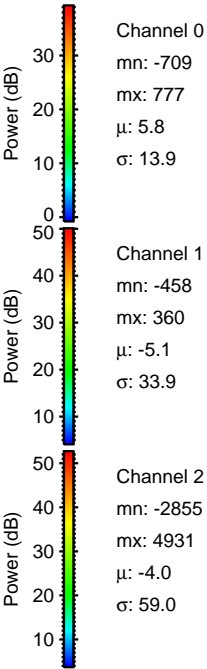
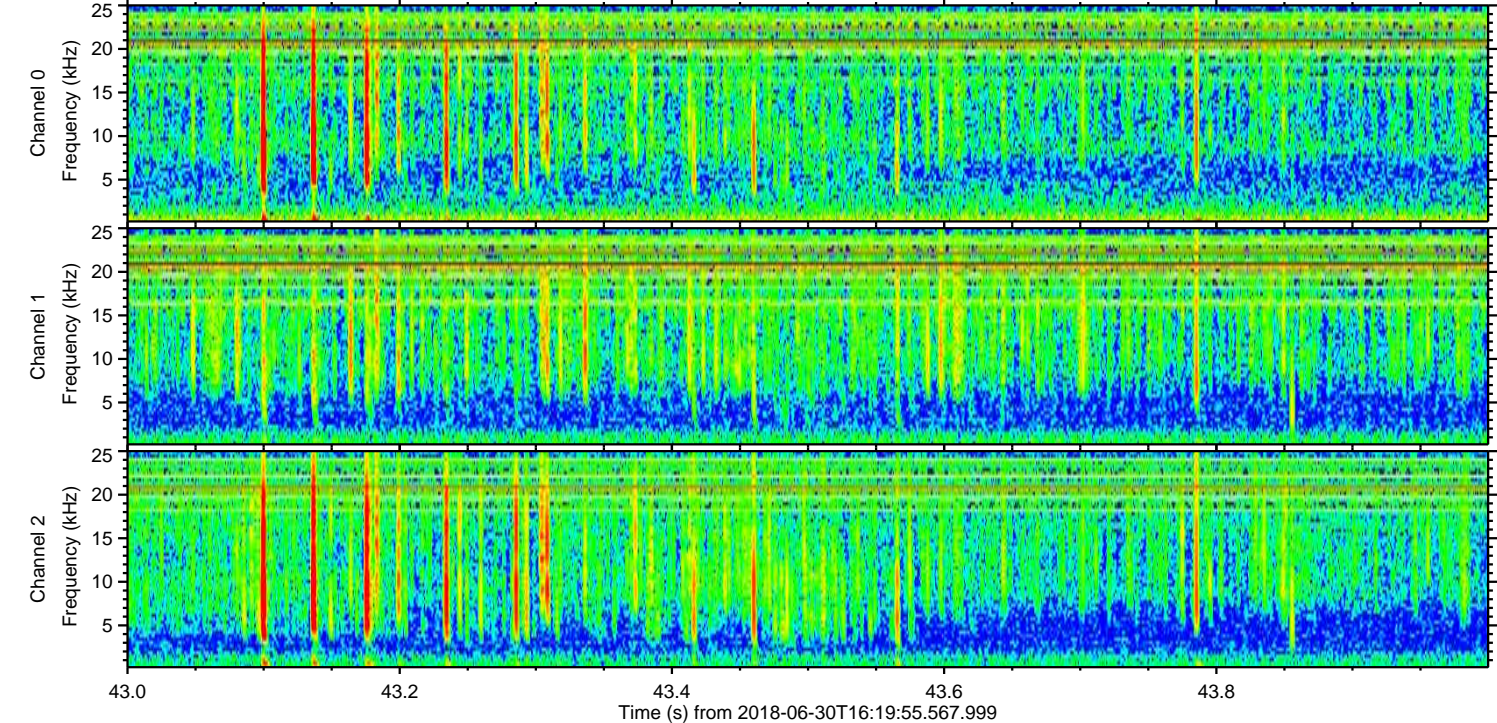
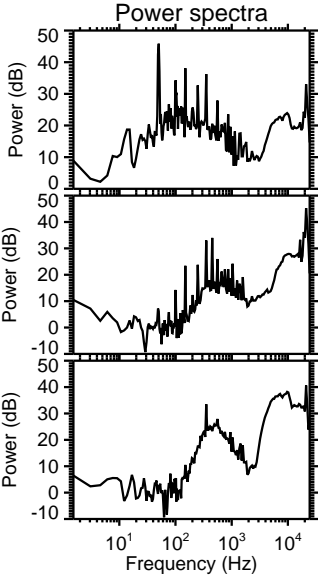
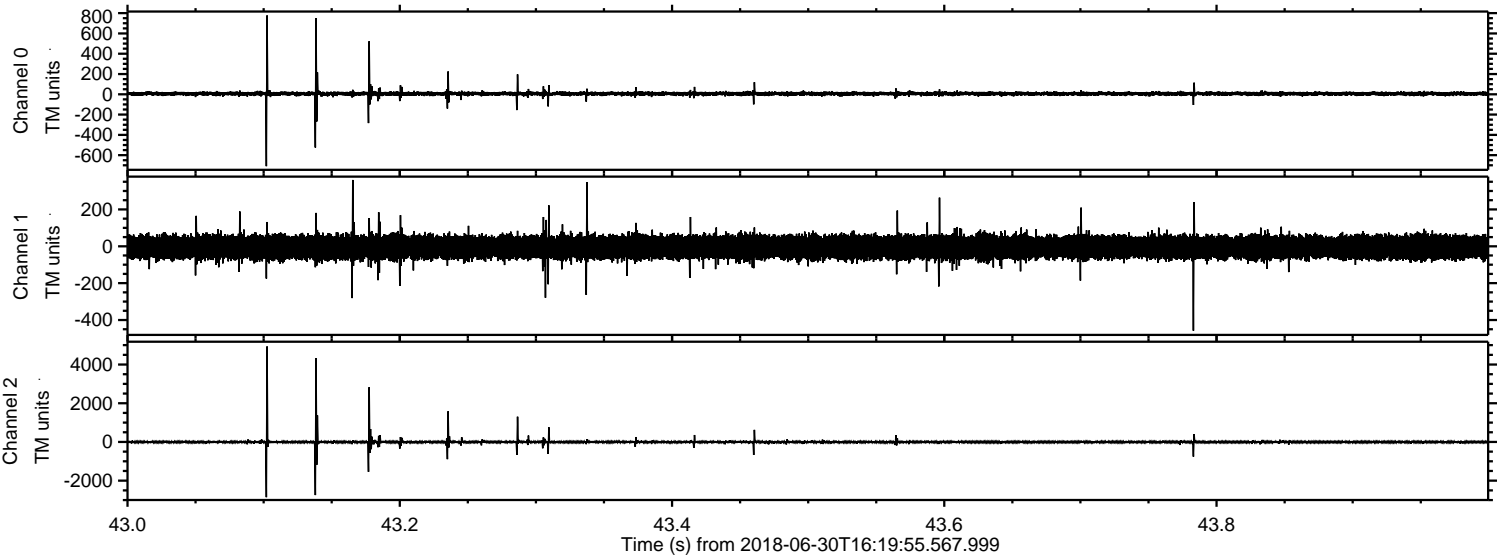
Processed Sat Jun 30 18:27:29 2018 by ELM ver.2012-10-06 from 001__elm20180630_161954__dat00.bin



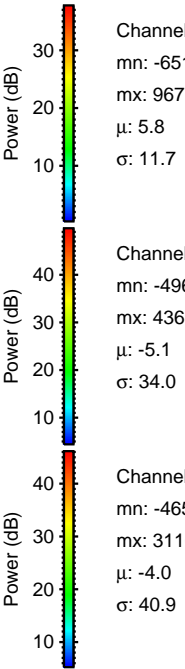
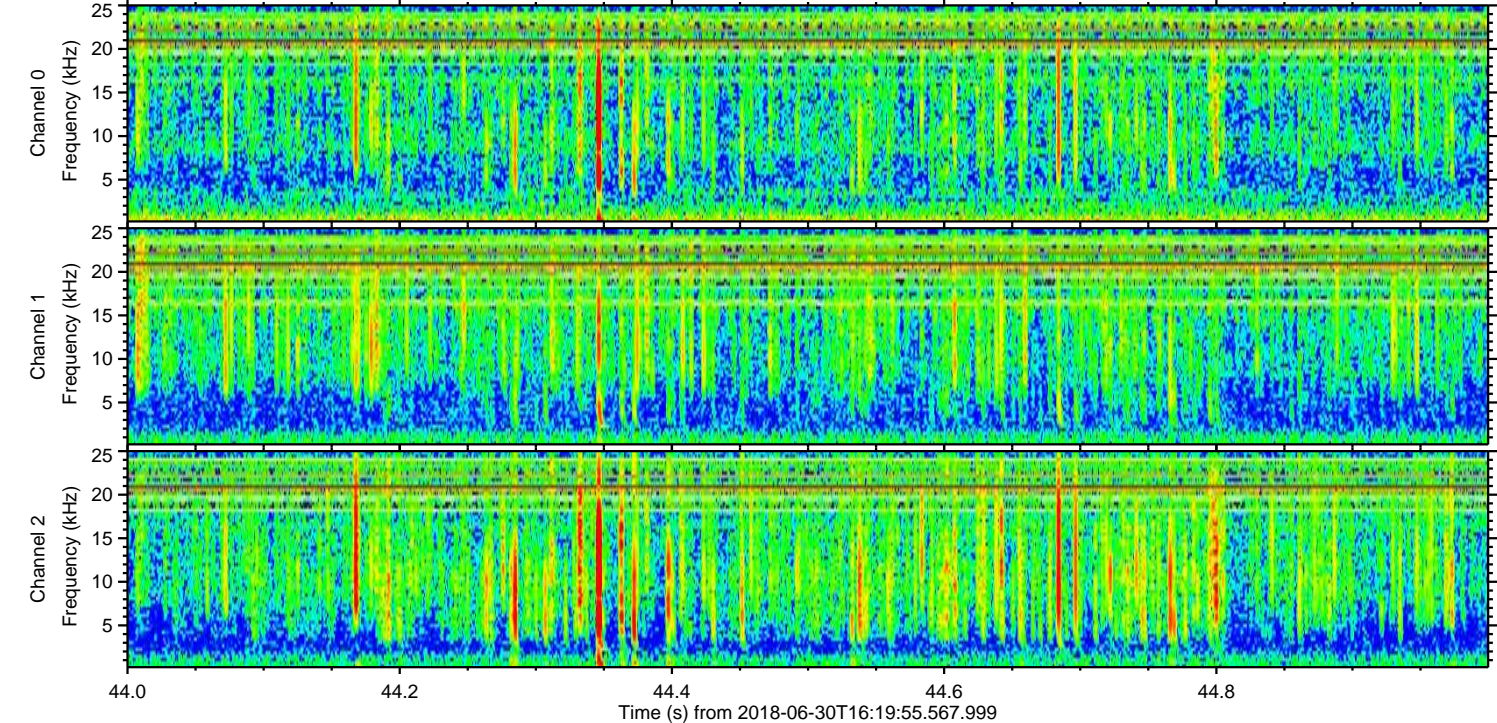
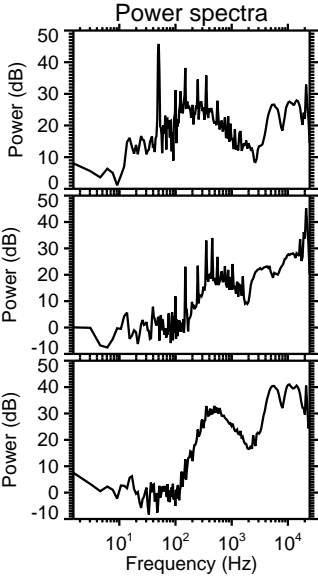
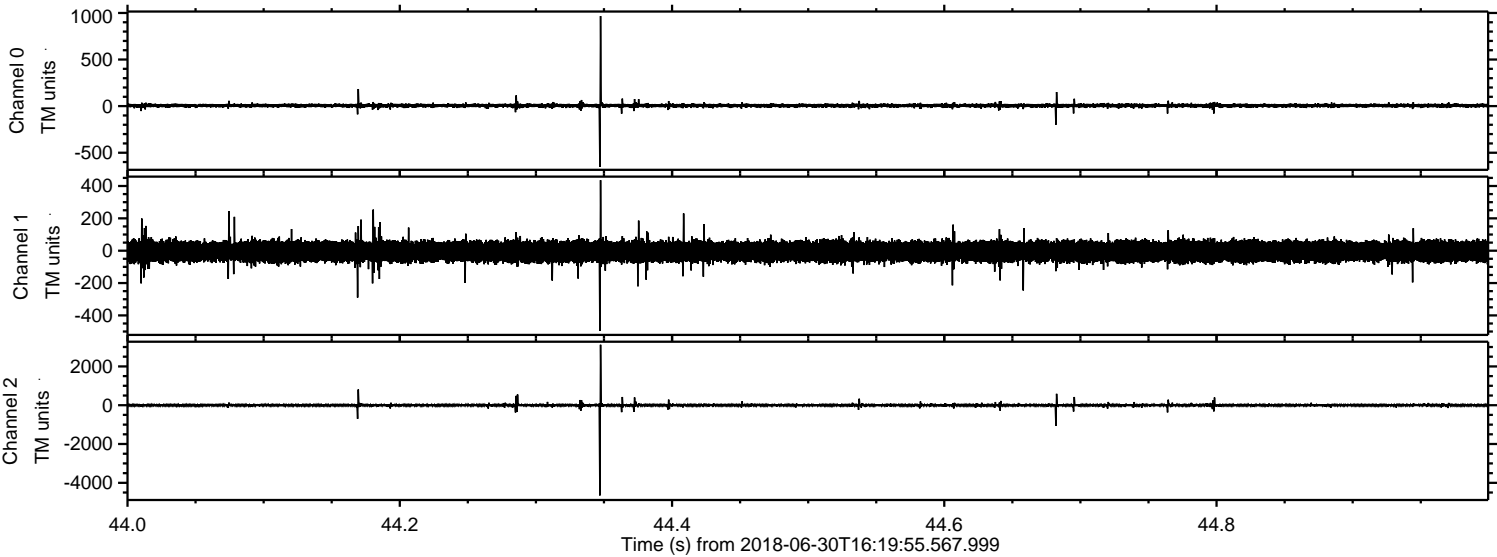
Processed Sat Jun 30 18:27:29 2018 by ELM ver.2012-10-06 from 001__elm20180630_161954__dat00.bin



Processed Sat Jun 30 18:27:30 2018 by ELM ver.2012-10-06 from 001__elm20180630_161954__dat00.bin

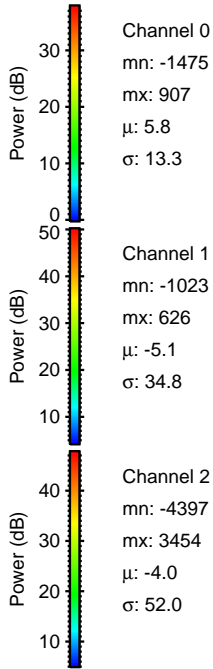
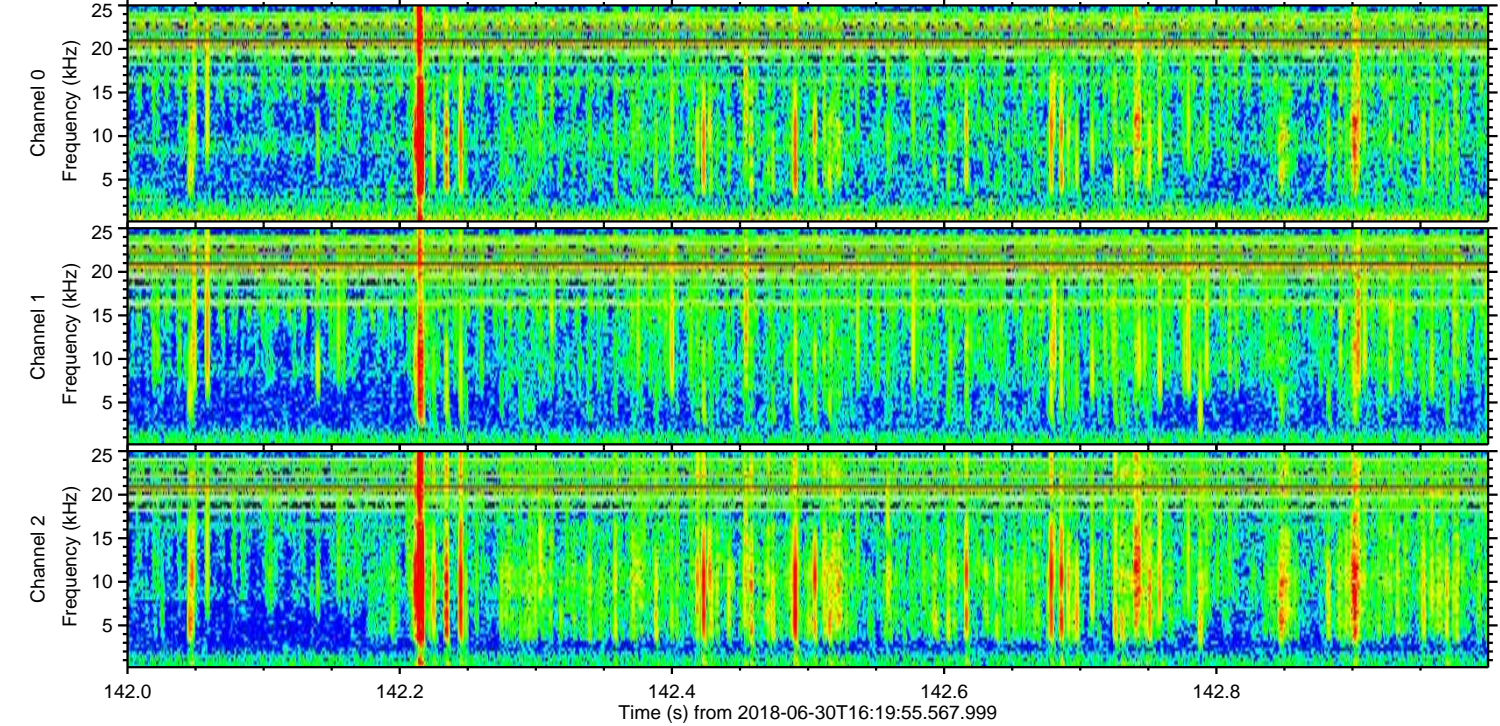
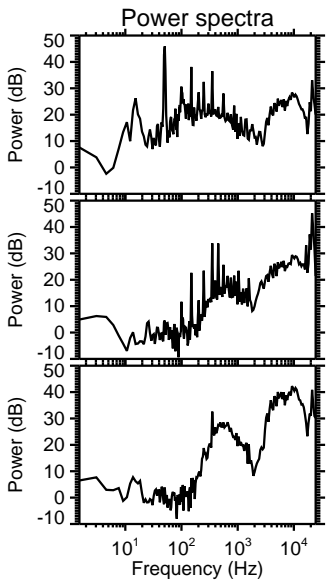
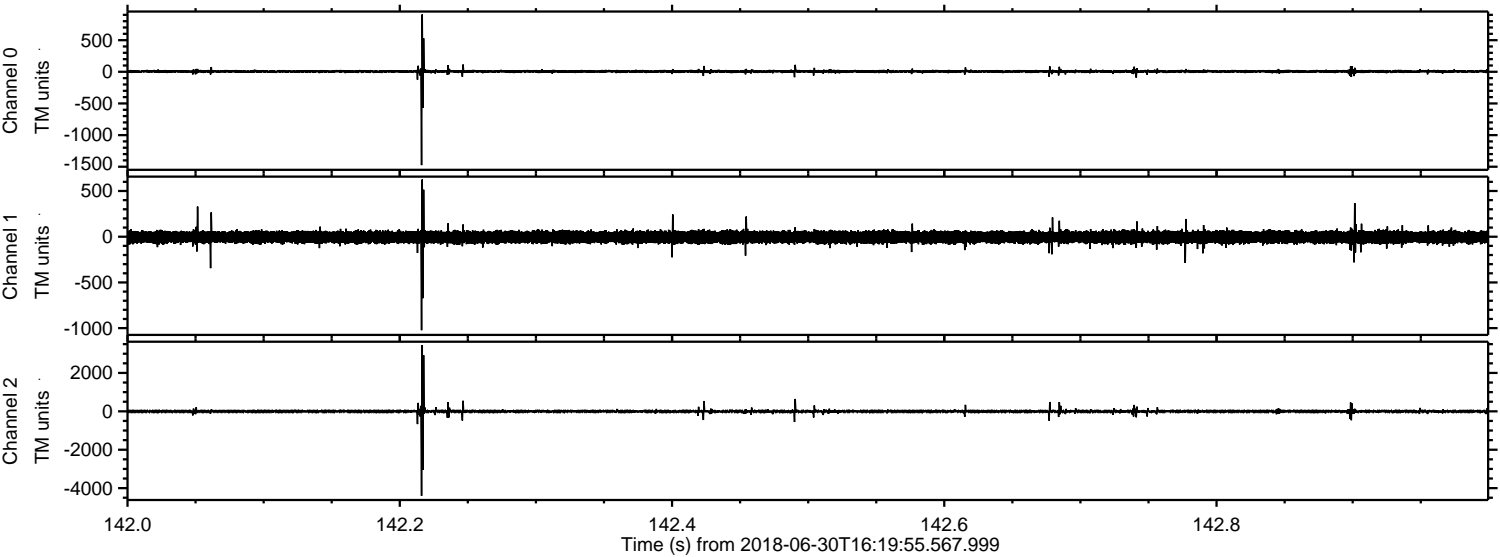


Processed Sat Jun 30 18:27:31 2018 by ELM ver.2012-10-06 from 001__elm20180630_161954__dat00.bin



ELMAVAN 3D WAVEFORMS (Measured data sampled at 50 kHz) 51000 packets of 144 samples from 2018-06-30T16:19:55.567.999. Part 143/147

Processed Sat Jun 30 18:27:32 2018 by ELM ver.2012-10-06 from 001__elm20180630_161954__dat00.bin



Channel 0
mn: -1475
mx: 907
 μ : 5.8
 σ : 13.3

Channel 1
mn: -1023
mx: 626
 μ : -5.1
 σ : 34.8

Channel 2
mn: -4397
mx: 3454
 μ : -4.0
 σ : 52.0

Processed Sat Jun 30 18:27:33 2018 by ELM ver.2012-10-06 from 001__elm20180630_161954__dat00.bin

