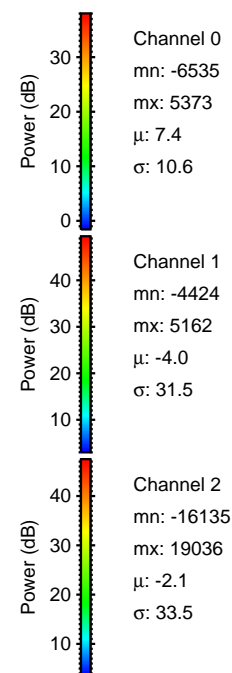
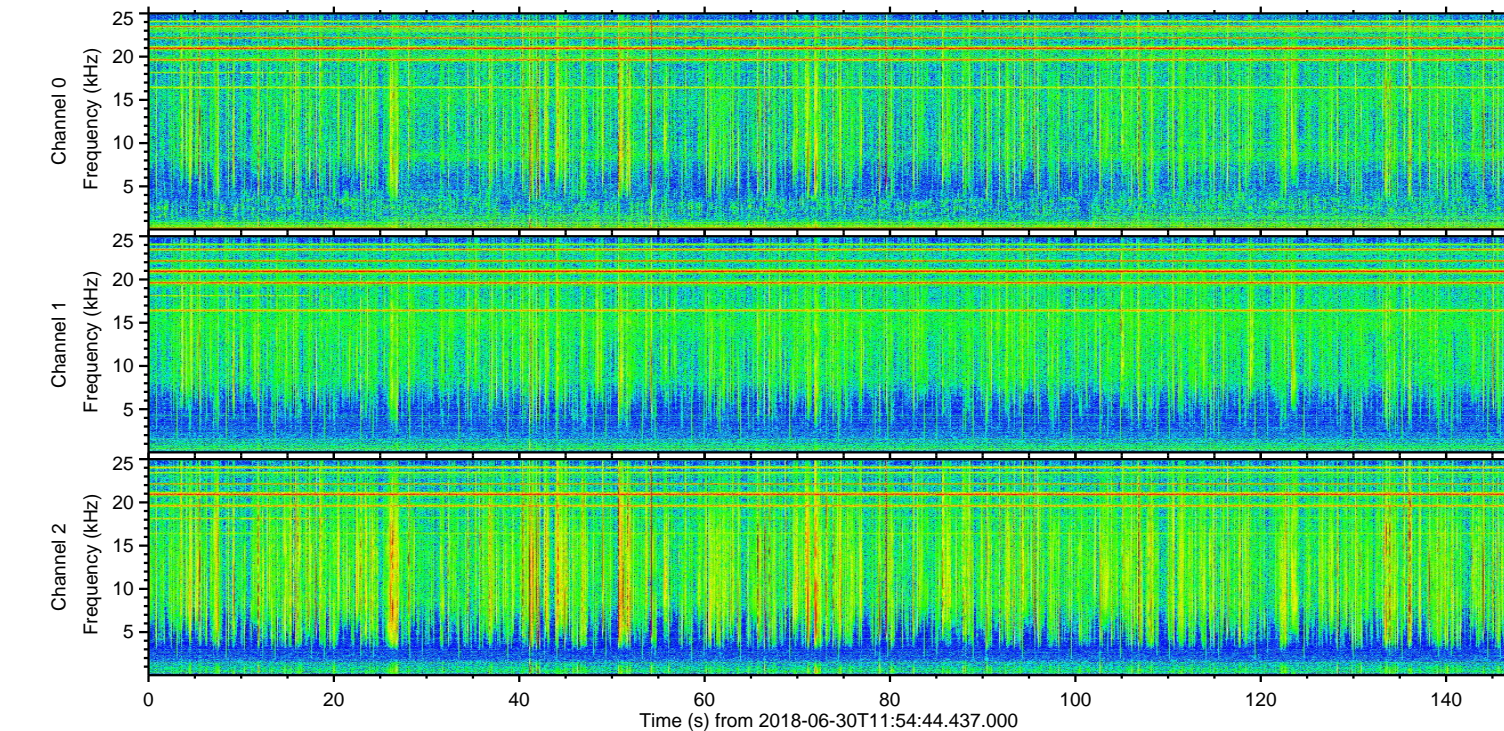
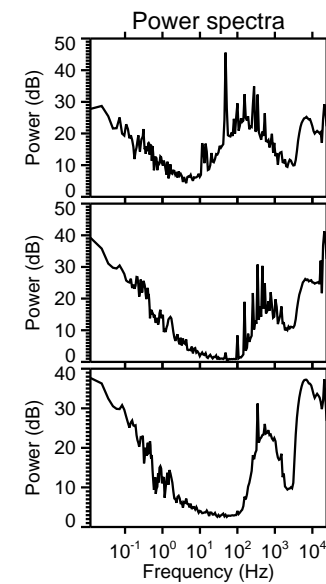
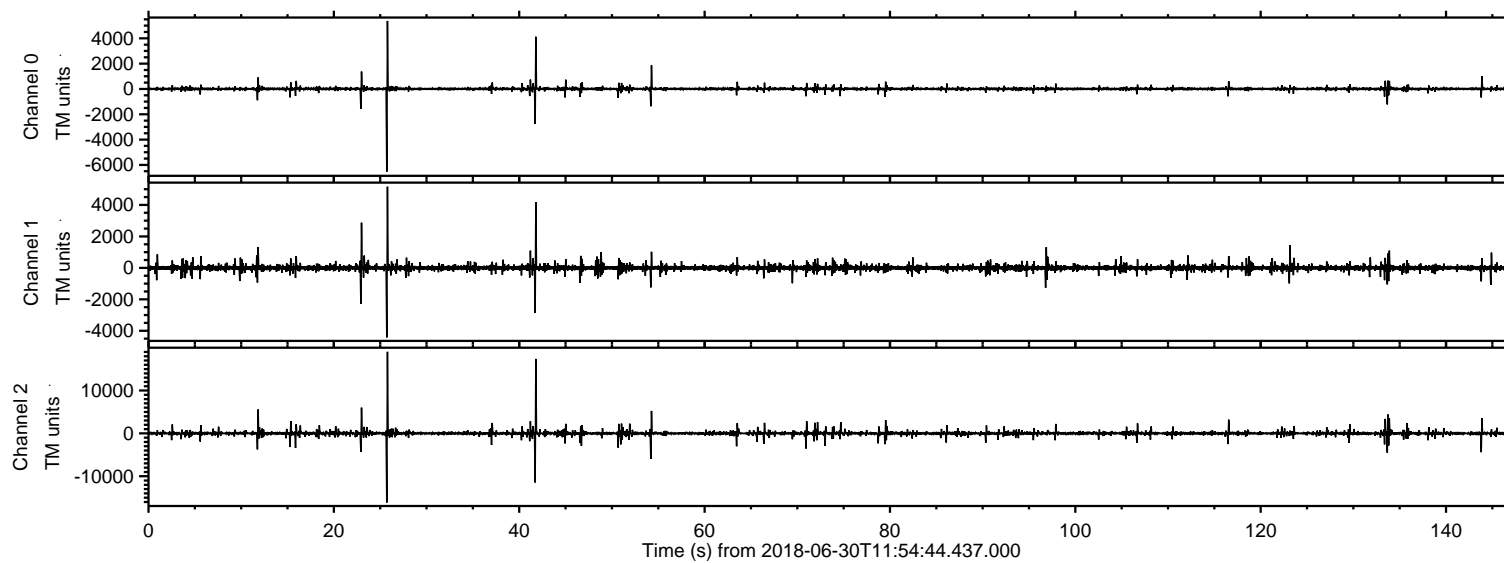
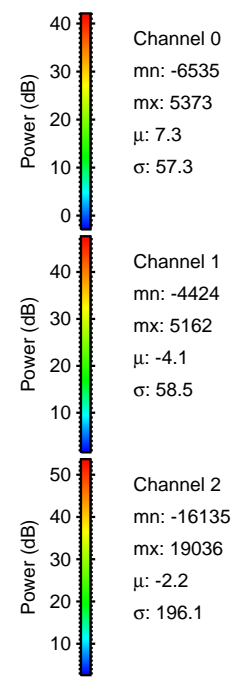
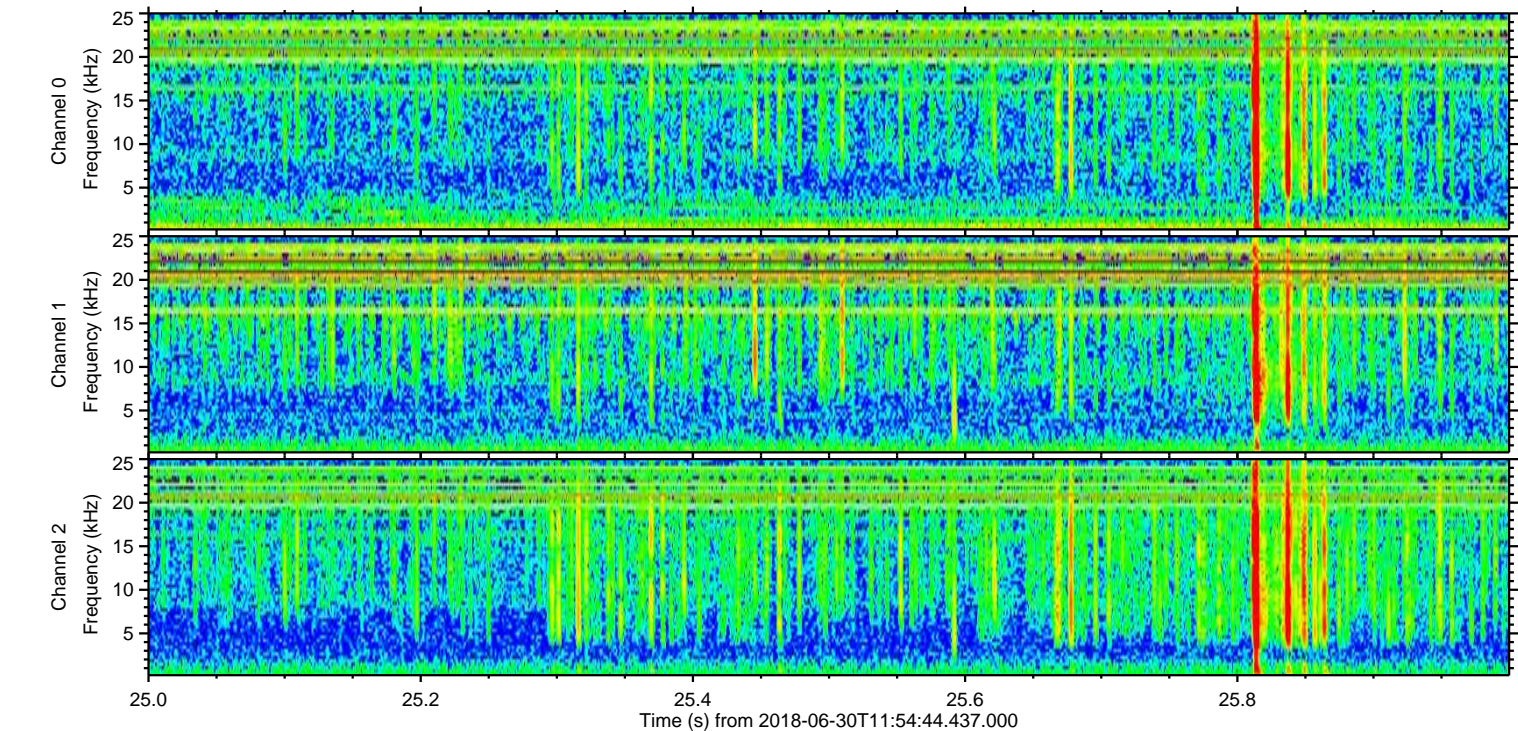
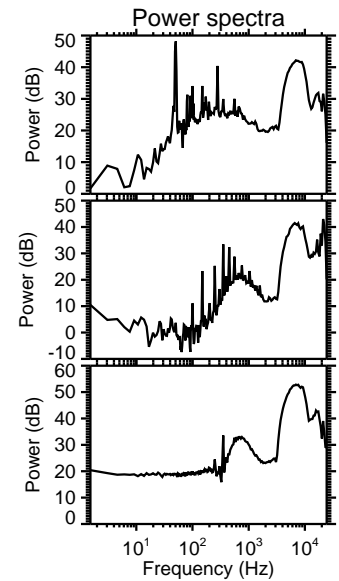
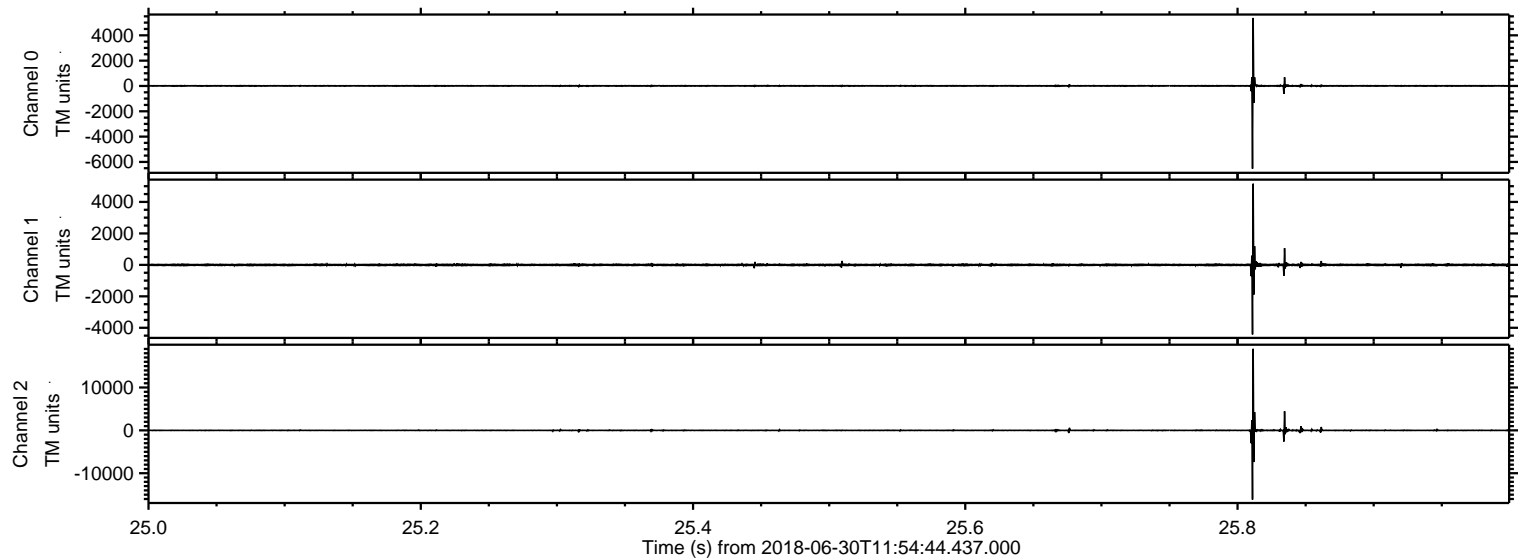


ELMAVAN 3D WAVEFORMS (Measured data sampled at 50 kHz) 51000 packets of 144 samples from 2018-06-30T11:54:44.437.000.

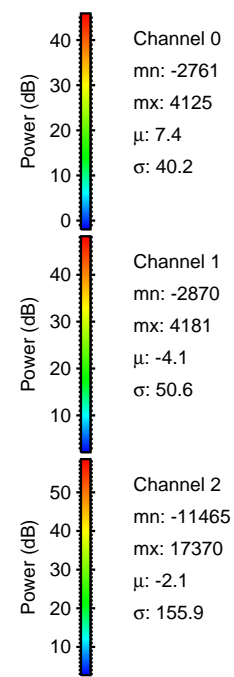
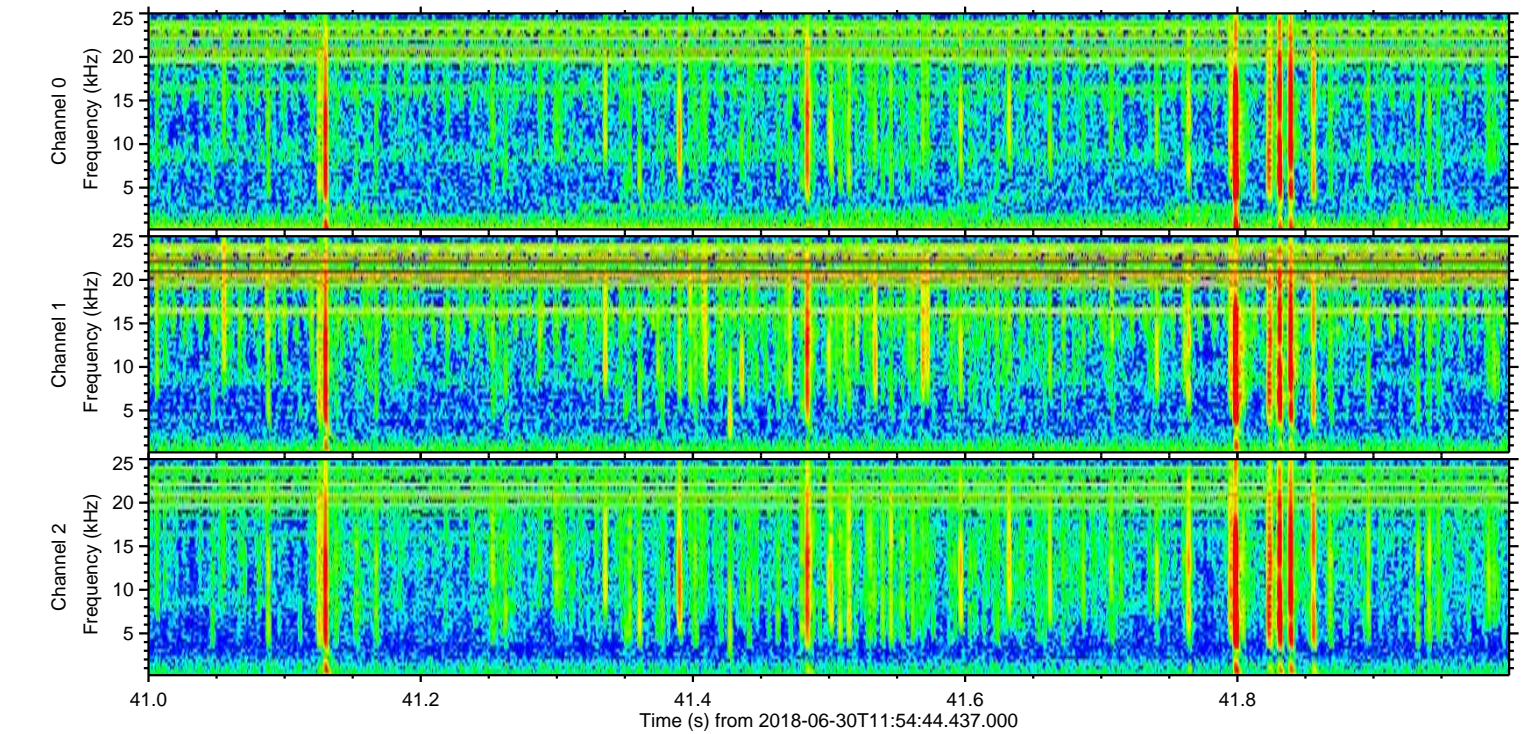
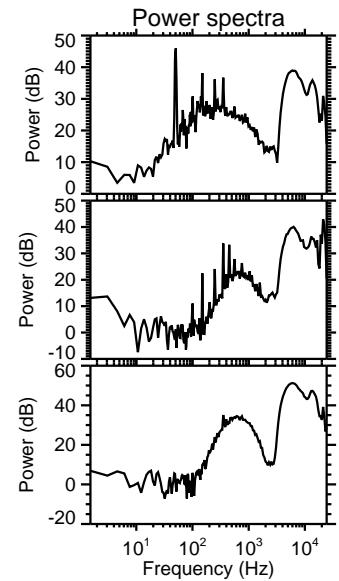
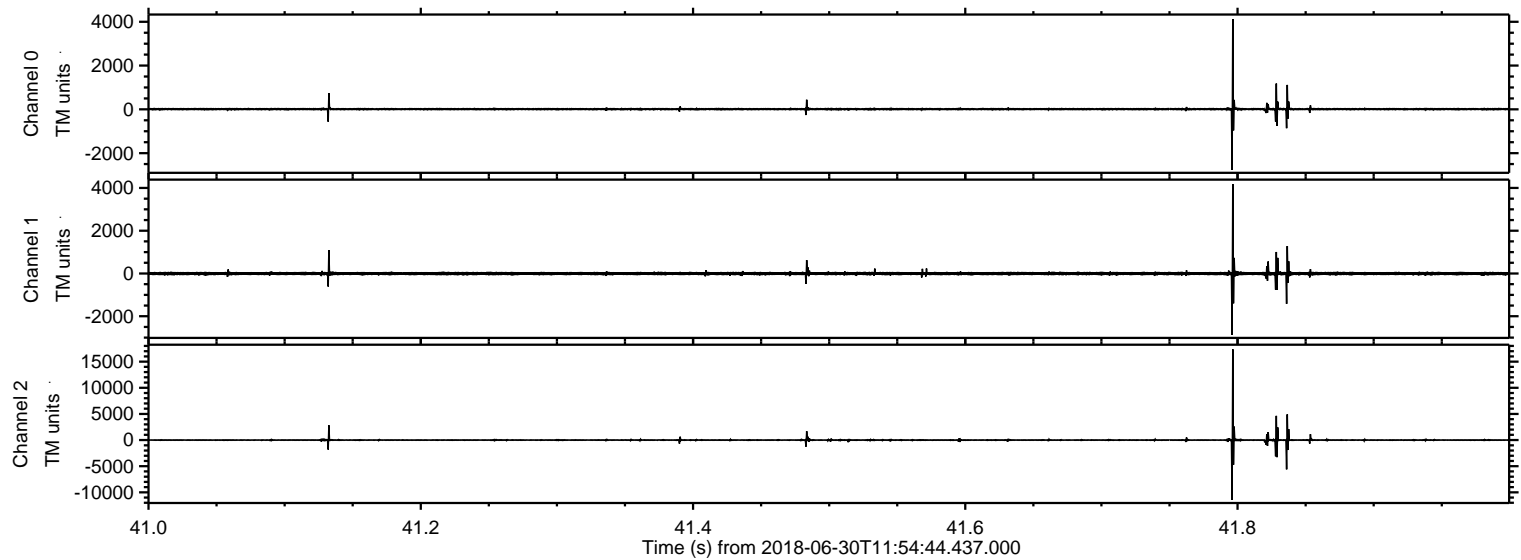
Processed Sat Jun 30 14:03:01 2018 by ELM ver.2012-10-06 from 001__elm20180630_115443__dat00.bin



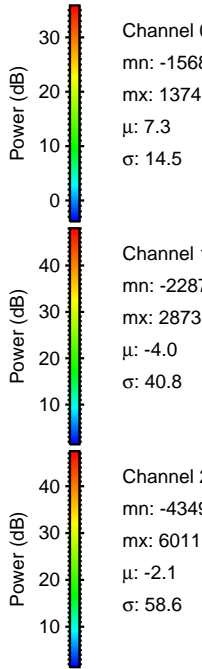
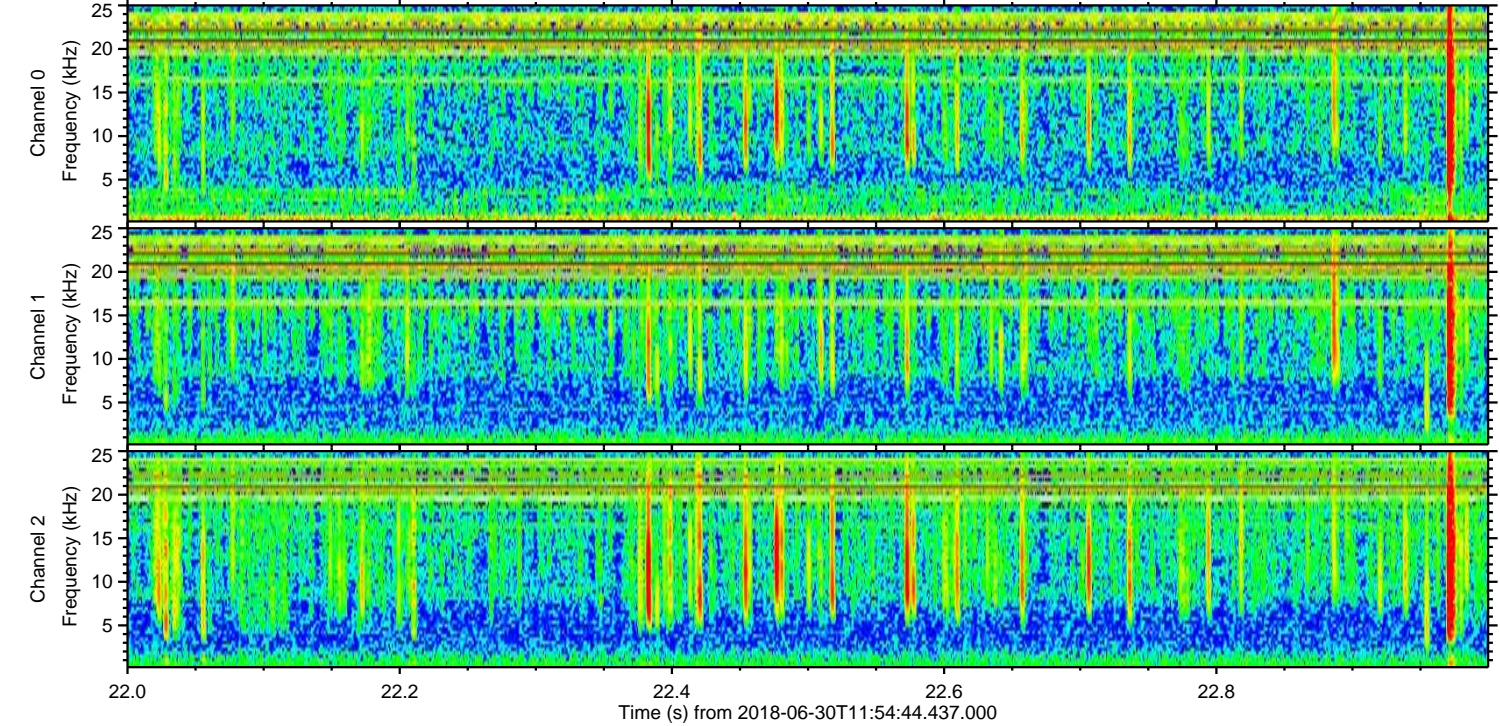
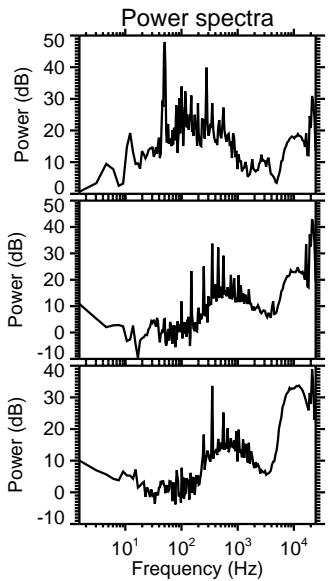
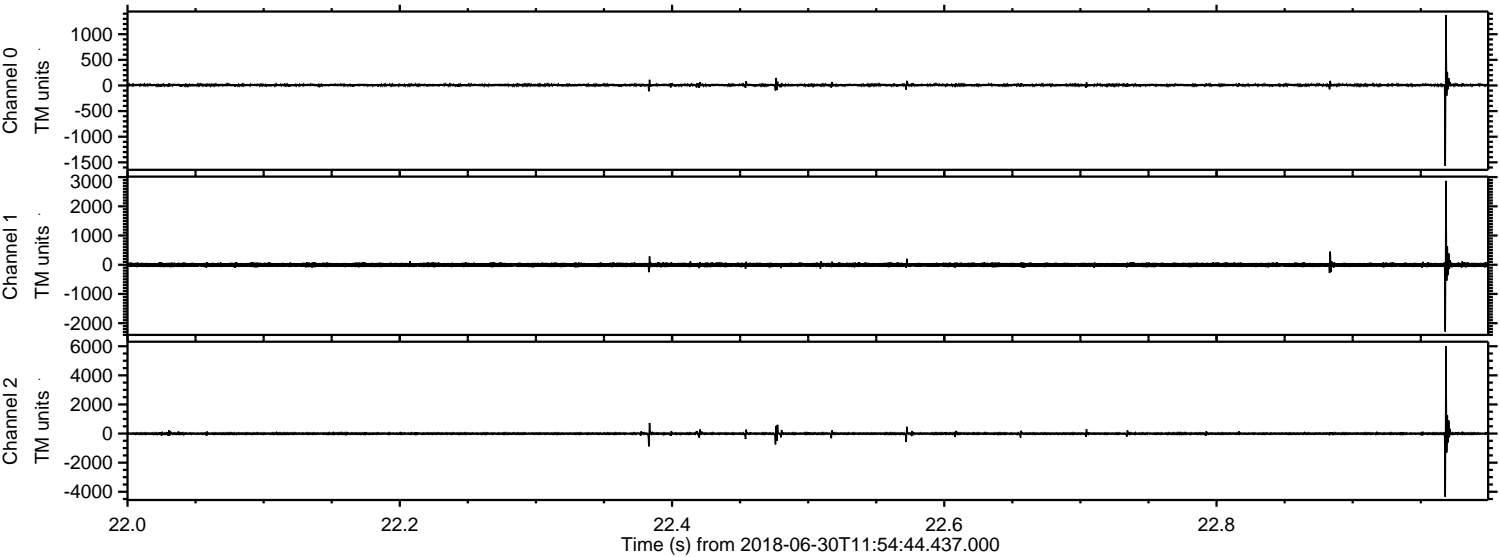
Processed Sat Jun 30 14:03:09 2018 by ELM ver.2012-10-06 from 001__elm20180630_115443__dat00.bin



Processed Sat Jun 30 14:03:09 2018 by ELM ver.2012-10-06 from 001__elm20180630_115443__dat00.bin



Processed Sat Jun 30 14:03:10 2018 by ELM ver.2012-10-06 from 001__elm20180630_115443__dat00.bin

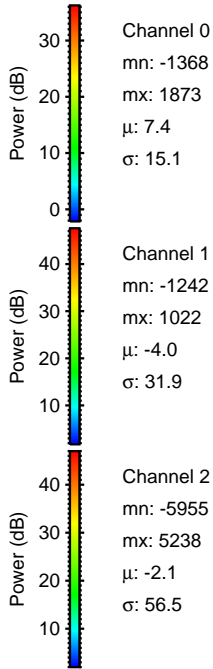
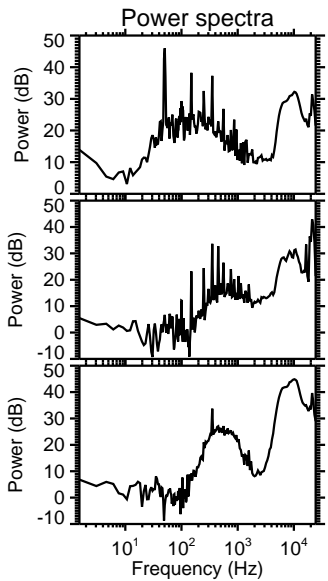
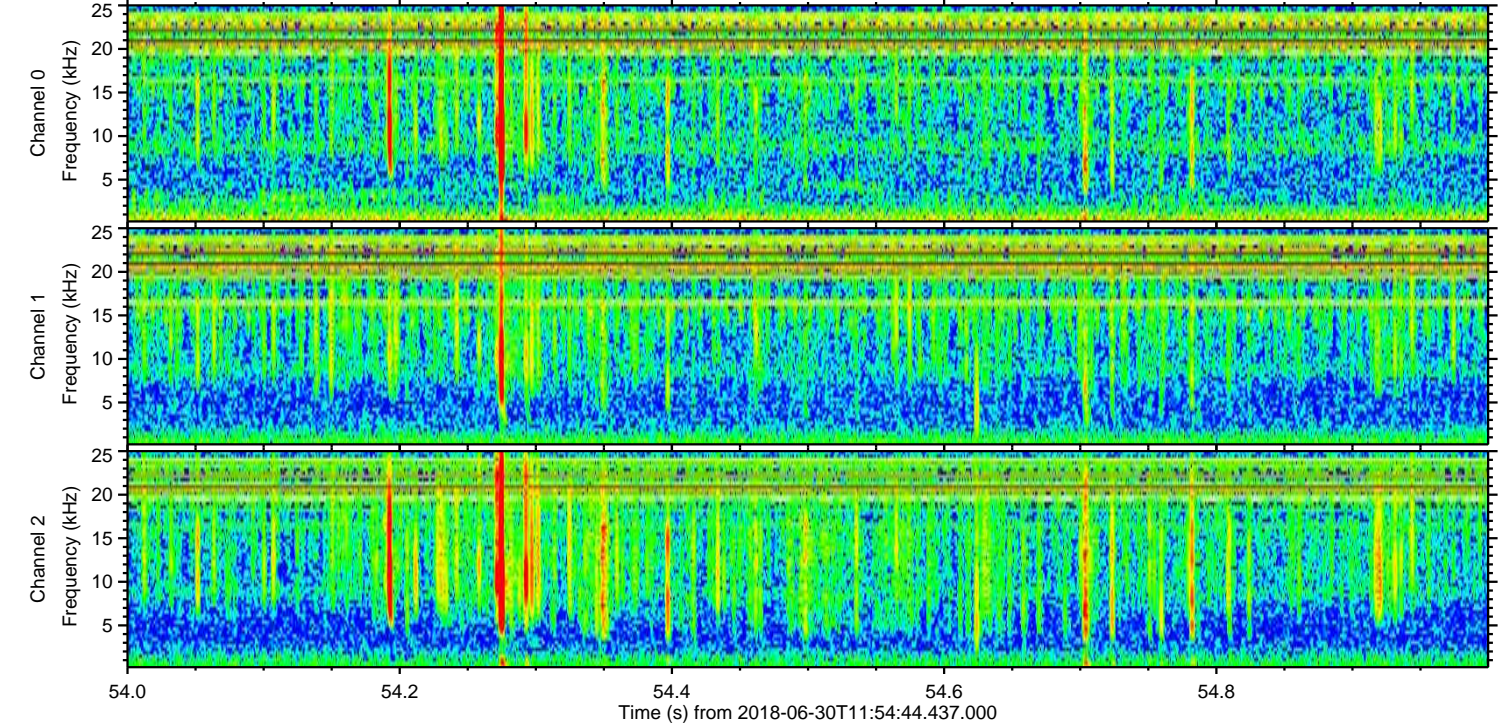
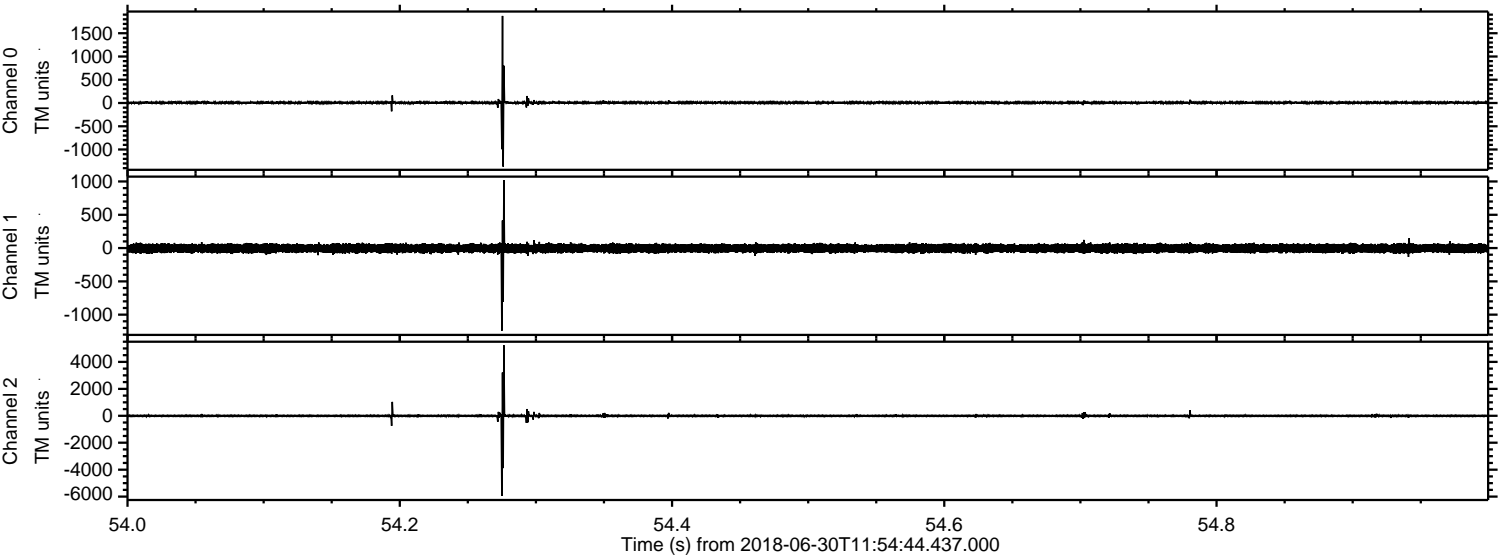


Channel 0
mn: -1568
mx: 1374
 μ : 7.3
 σ : 14.5

Channel 1
mn: -2287
mx: 2873
 μ : -4.0
 σ : 40.8

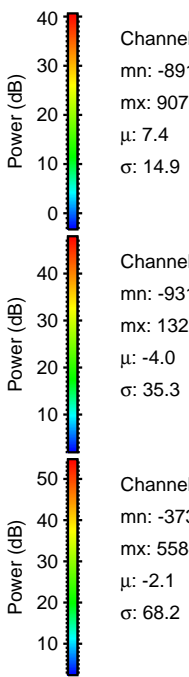
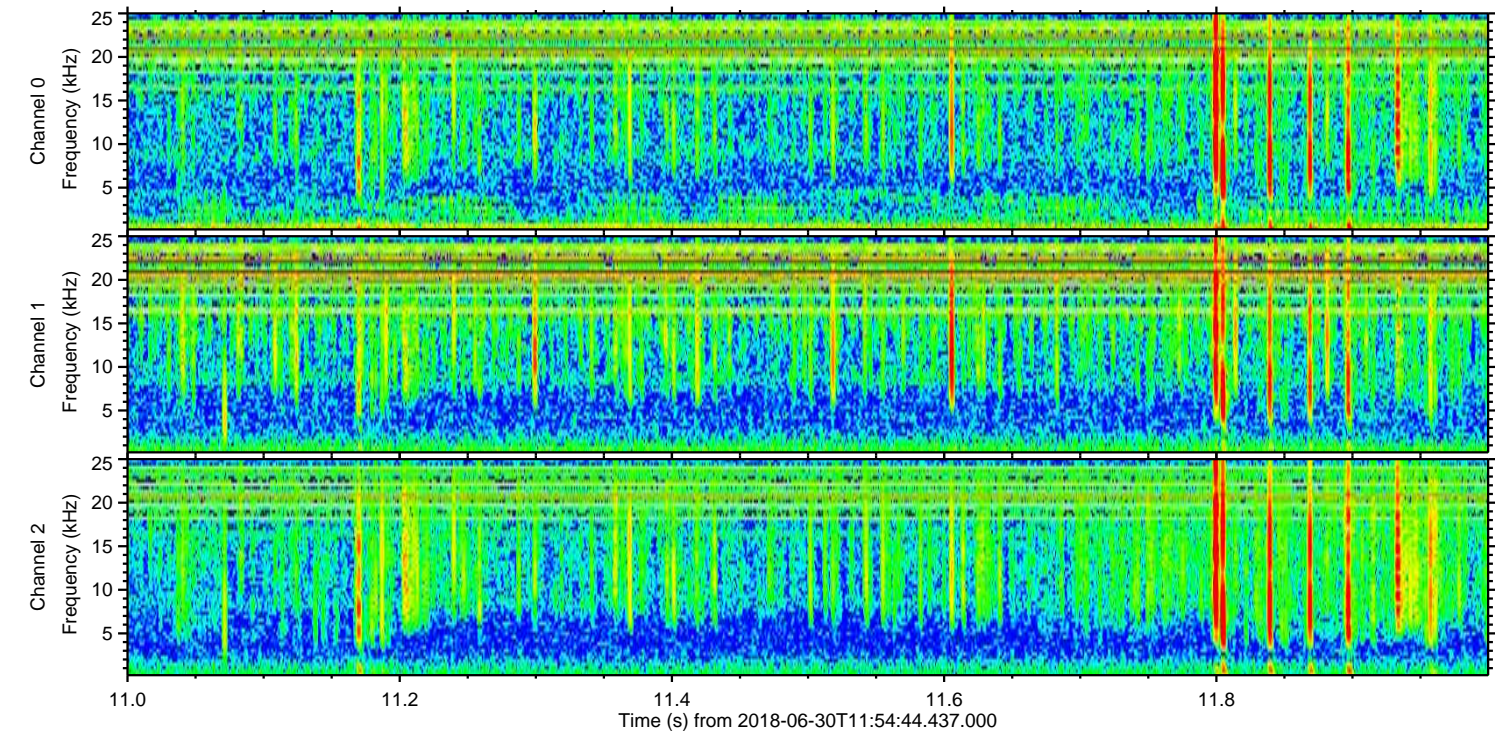
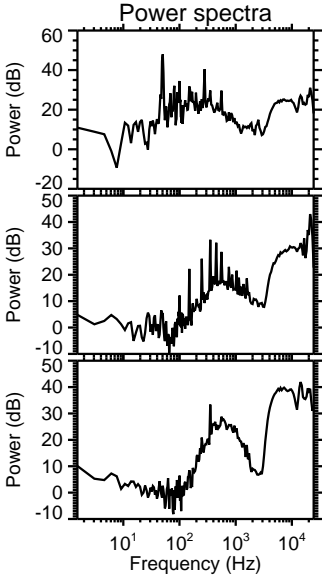
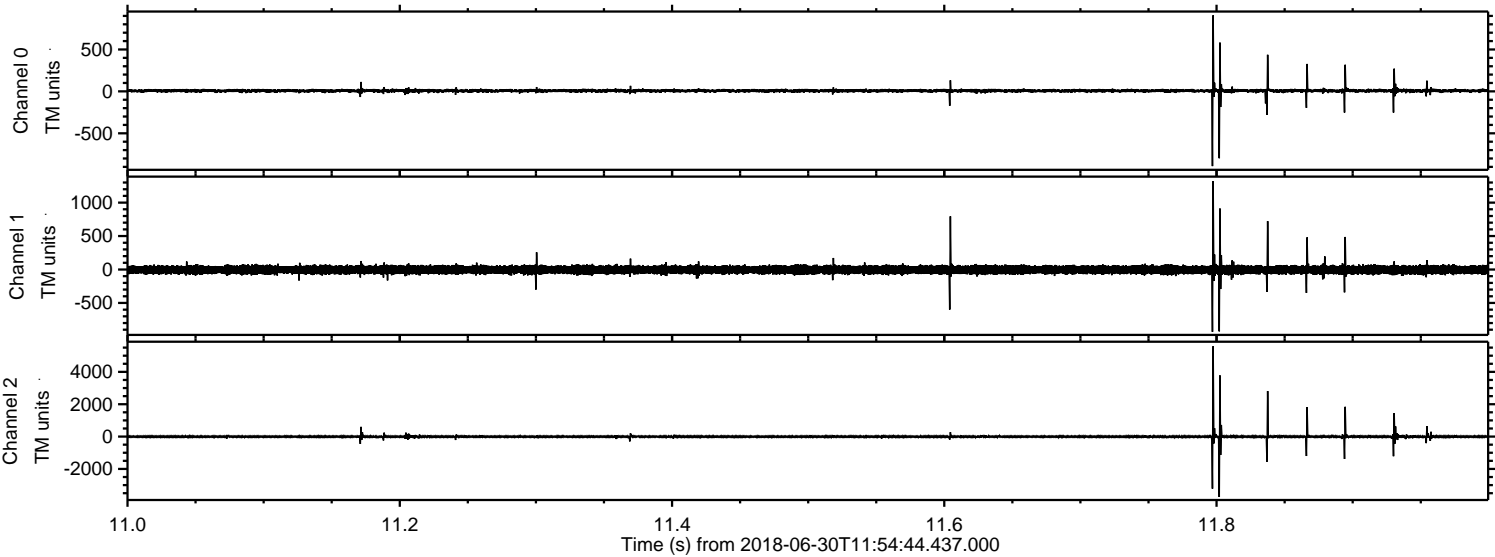
Channel 2
mn: -4349
mx: 6011
 μ : -2.1
 σ : 58.6

Processed Sat Jun 30 14:03:11 2018 by ELM ver.2012-10-06 from 001__elm20180630_115443__dat00.bin



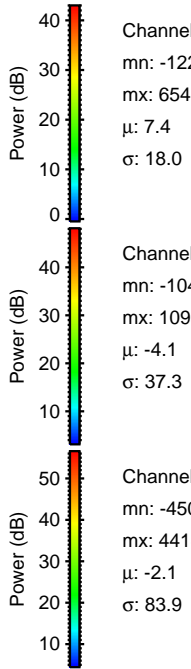
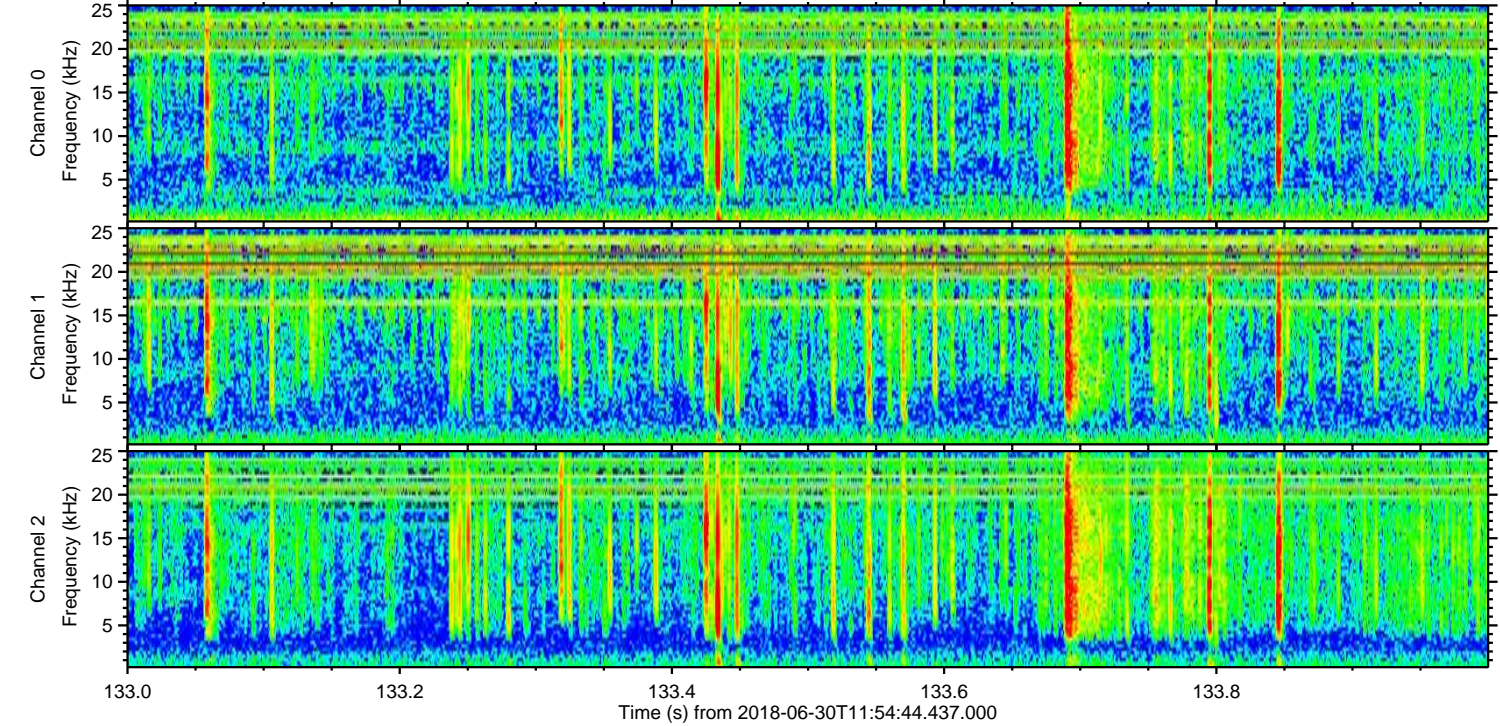
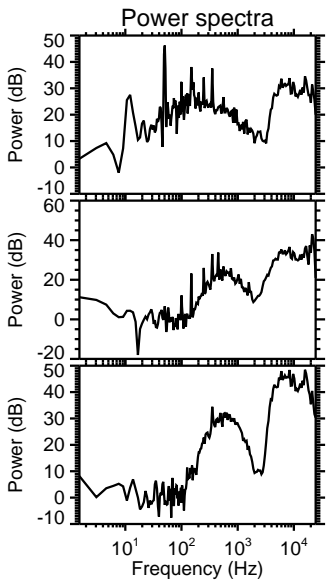
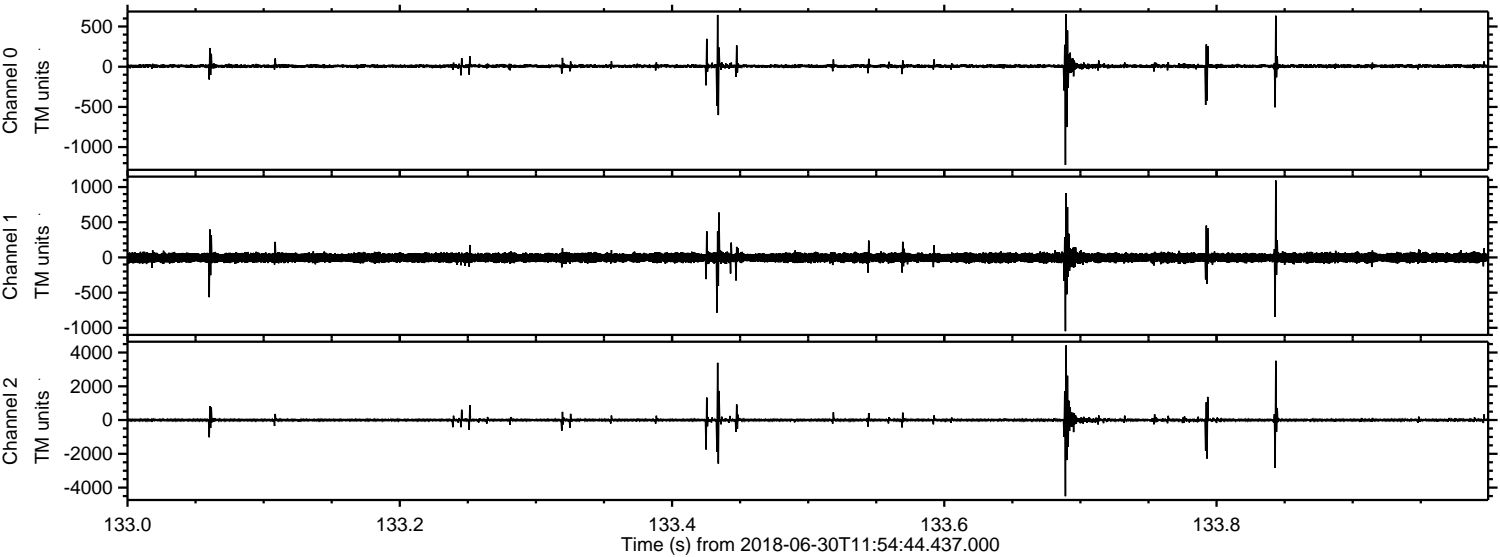
ELMAVAN 3D WAVEFORMS (Measured data sampled at 50 kHz) 51000 packets of 144 samples from 2018-06-30T11:54:44.437.000. Part 12/147

Processed Sat Jun 30 14:03:12 2018 by ELM ver.2012-10-06 from 001__elm20180630_115443__dat00.bin



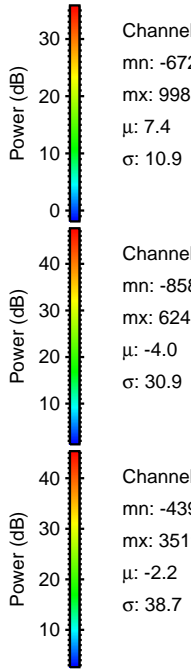
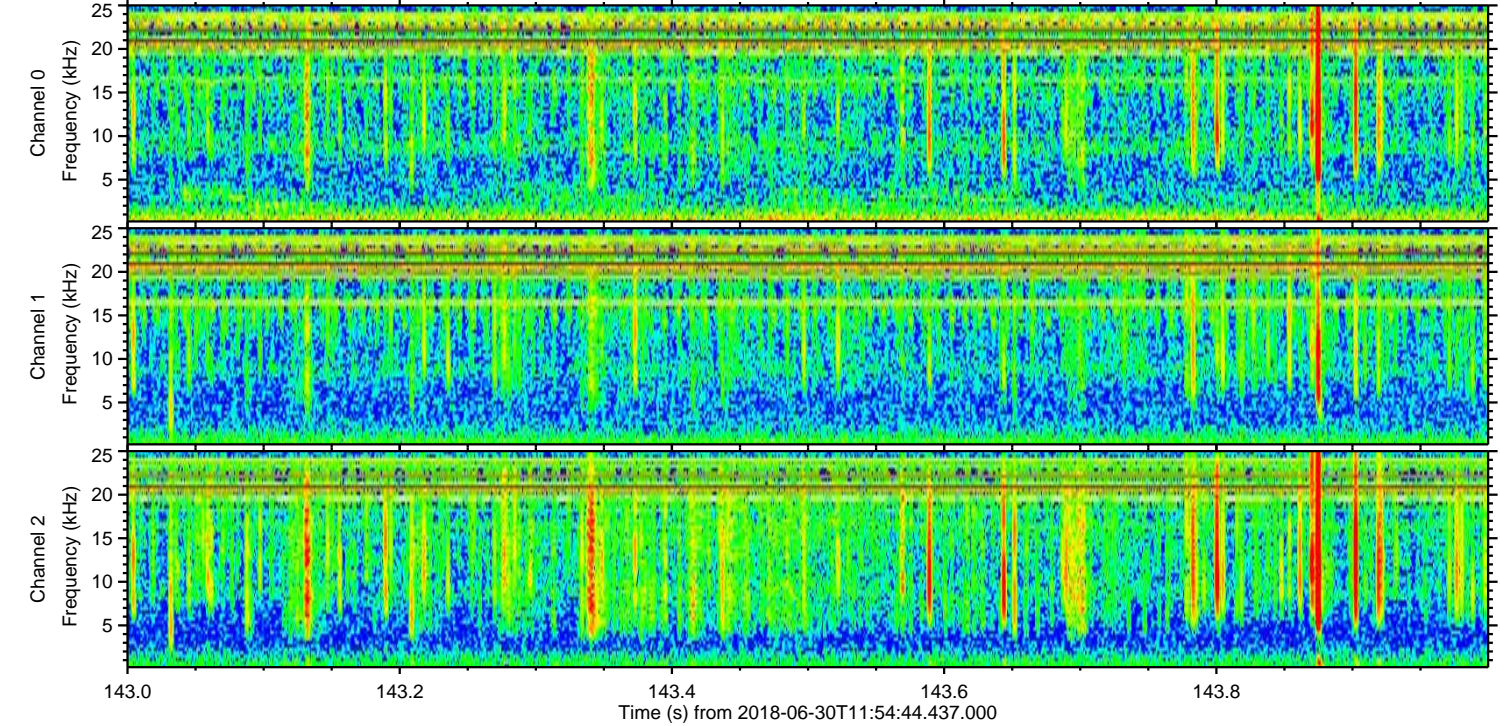
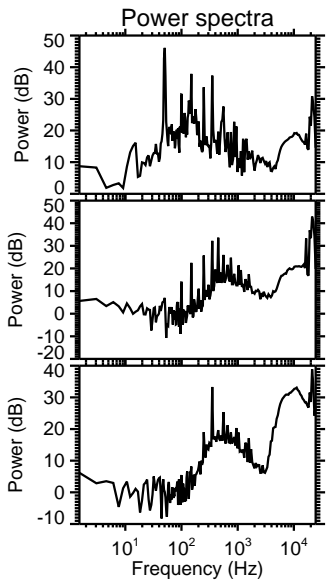
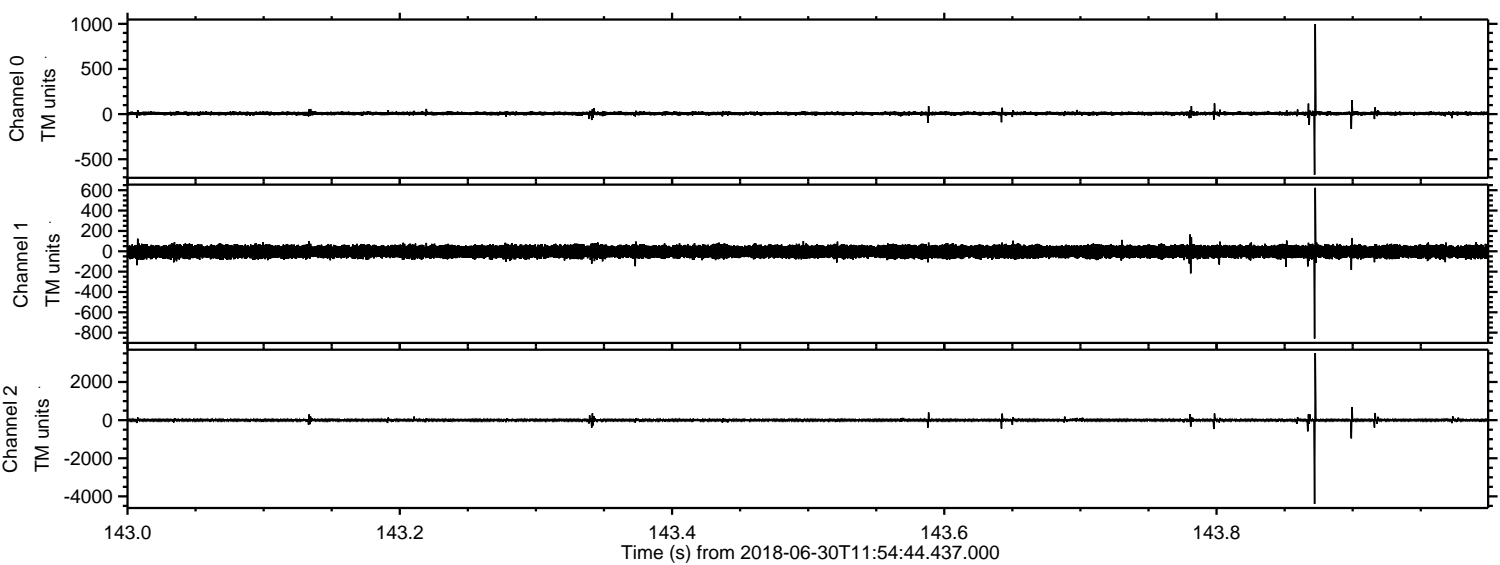
ELMAVAN 3D WAVEFORMS (Measured data sampled at 50 kHz) 51000 packets of 144 samples from 2018-06-30T11:54:44.437.000. Part 134/147

Processed Sat Jun 30 14:03:12 2018 by ELM ver.2012-10-06 from 001__elm20180630_115443__dat00.bin



ELMAVAN 3D WAVEFORMS (Measured data sampled at 50 kHz) 51000 packets of 144 samples from 2018-06-30T11:54:44.437.000. Part 144/147

Processed Sat Jun 30 14:03:13 2018 by ELM ver.2012-10-06 from 001__elm20180630_115443__dat00.bin

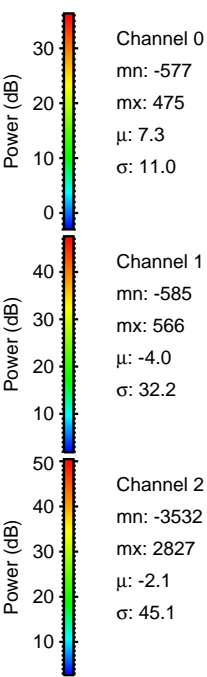
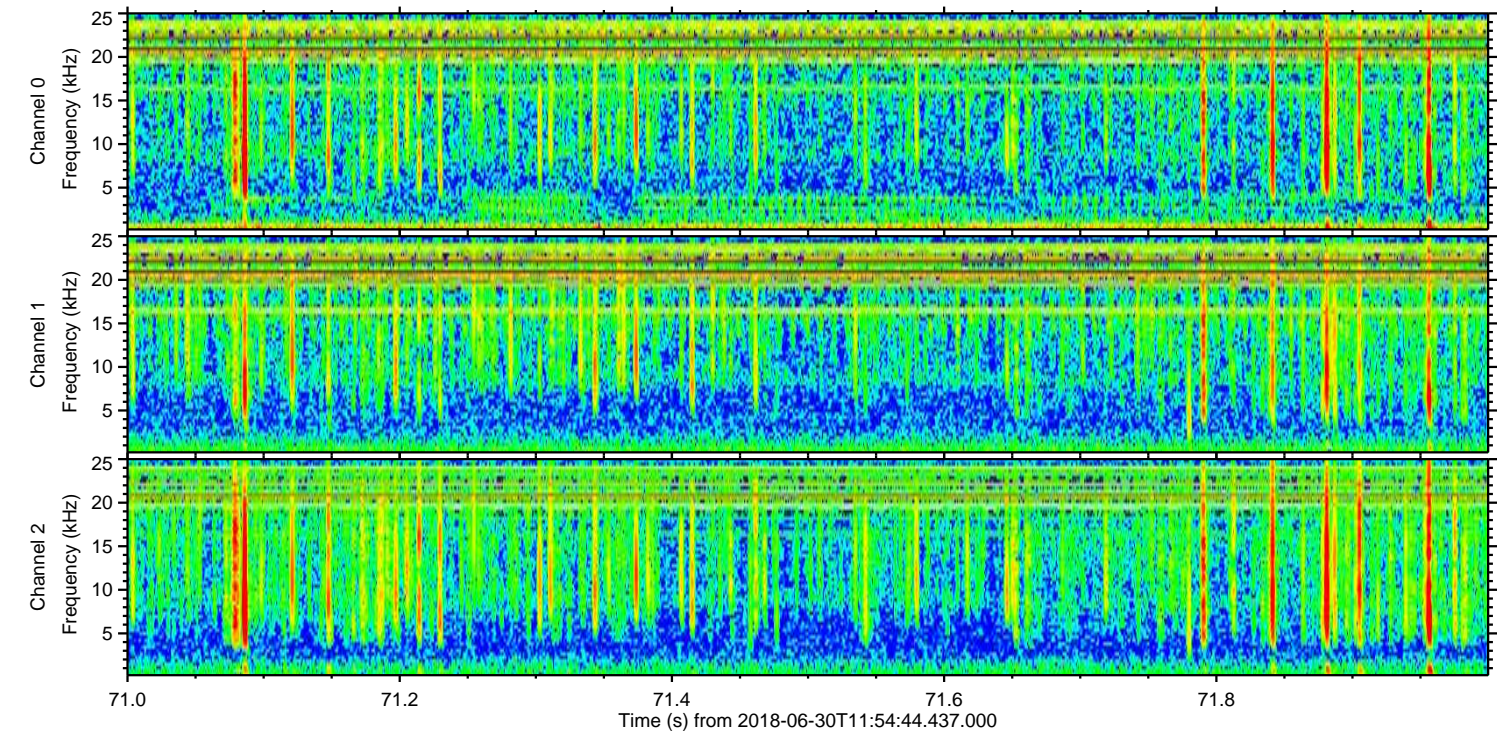
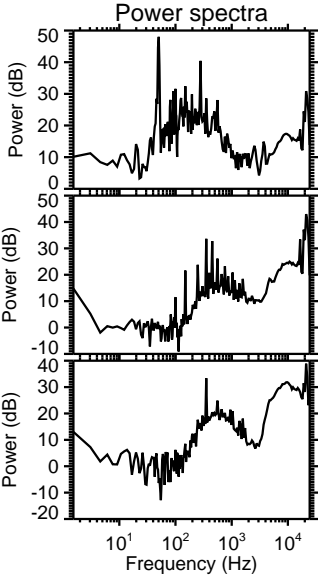
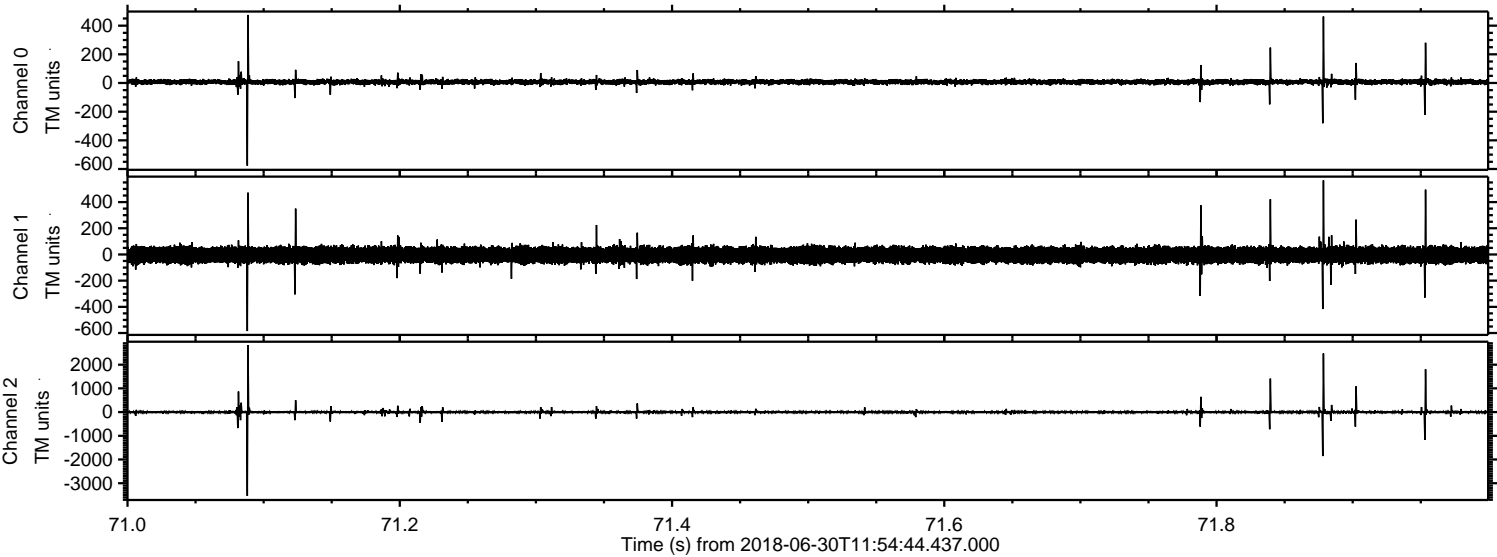


Channel 0
mn: -672
mx: 998
 μ : 7.4
 σ : 10.9

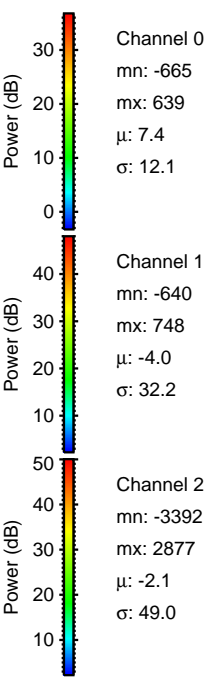
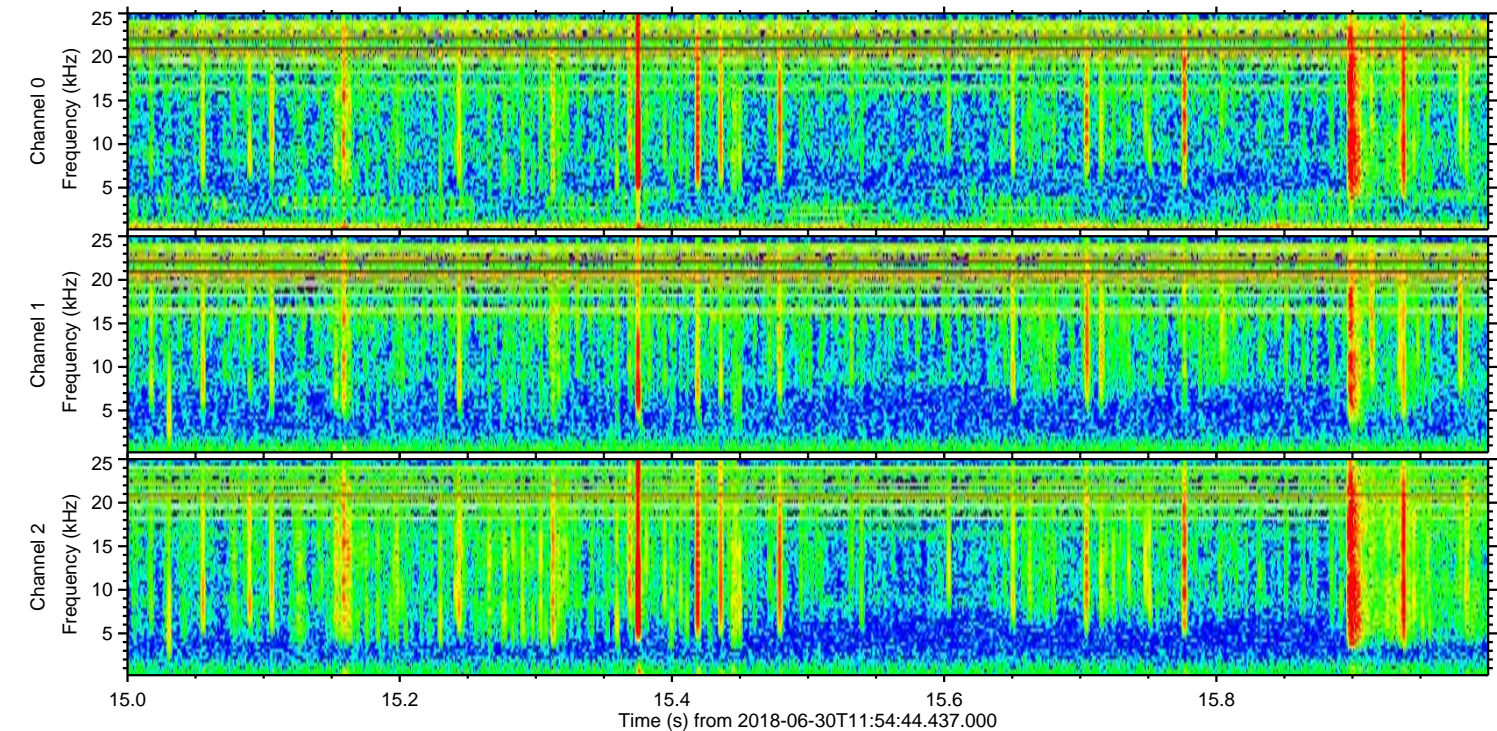
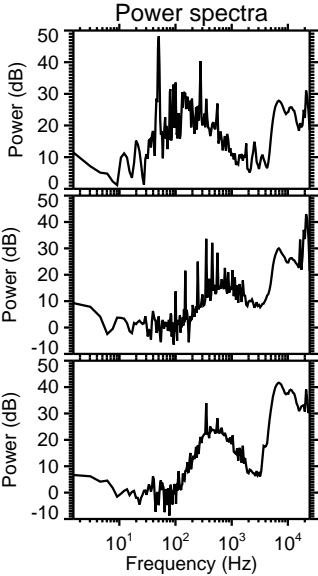
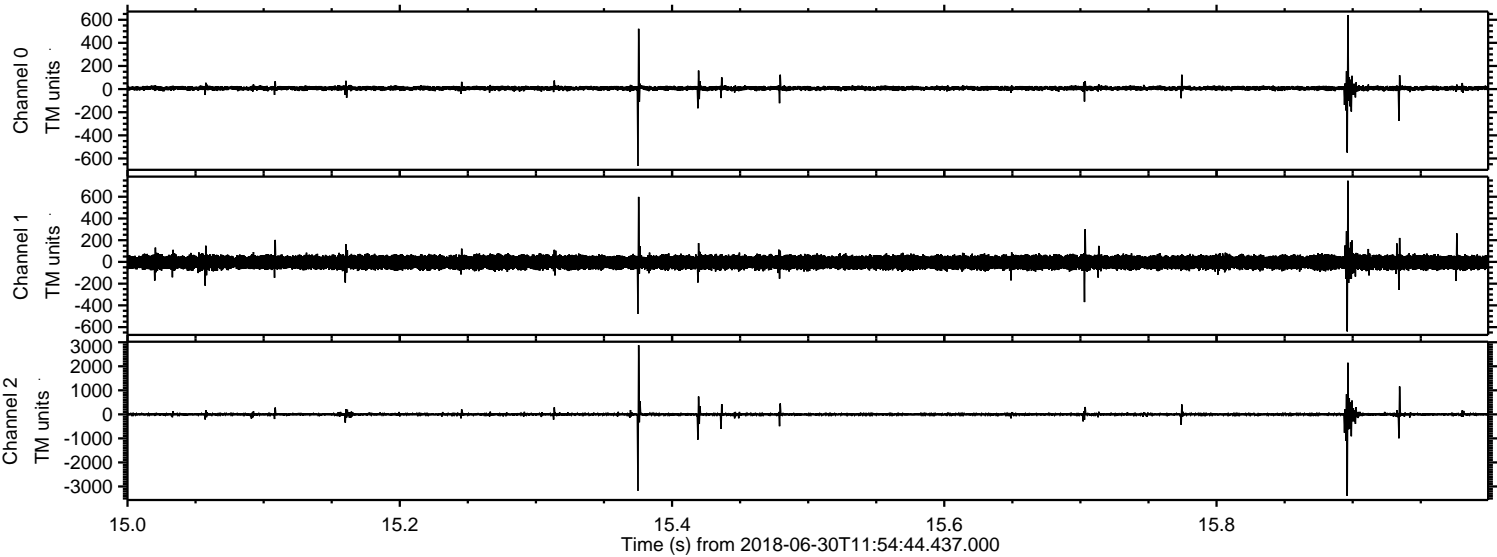
Channel 1
mn: -858
mx: 624
 μ : -4.0
 σ : 30.9

Channel 2
mn: -4390
mx: 3519
 μ : -2.2
 σ : 38.7

Processed Sat Jun 30 14:03:14 2018 by ELM ver.2012-10-06 from 001__elm20180630_115443__dat00.bin



Processed Sat Jun 30 14:03:14 2018 by ELM ver.2012-10-06 from 001__elm20180630_115443__dat00.bin



Processed Sat Jun 30 14:03:15 2018 by ELM ver.2012-10-06 from 001__elm20180630_115443__dat00.bin

