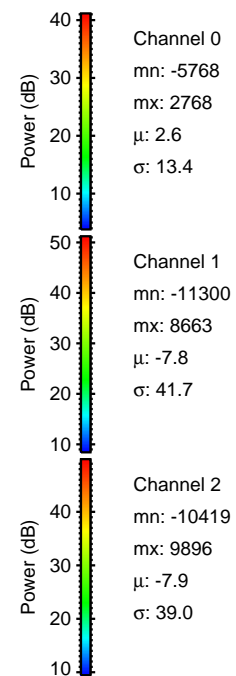
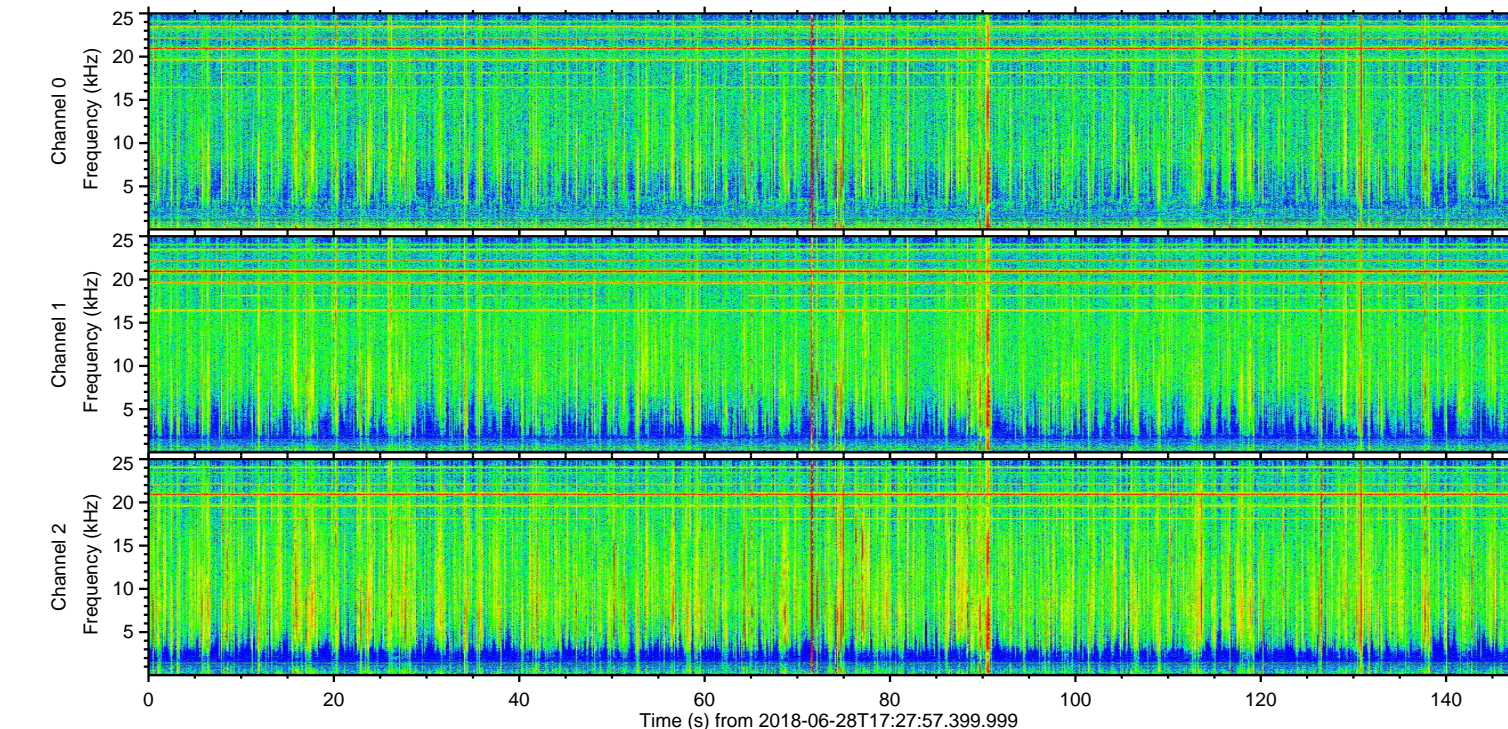
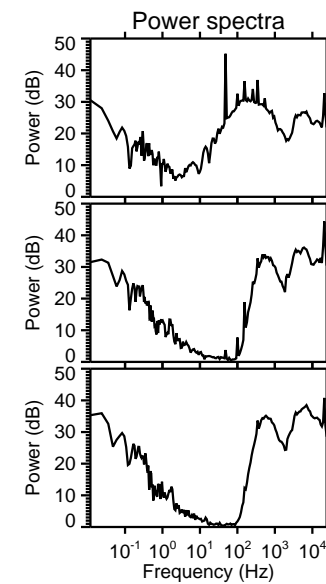
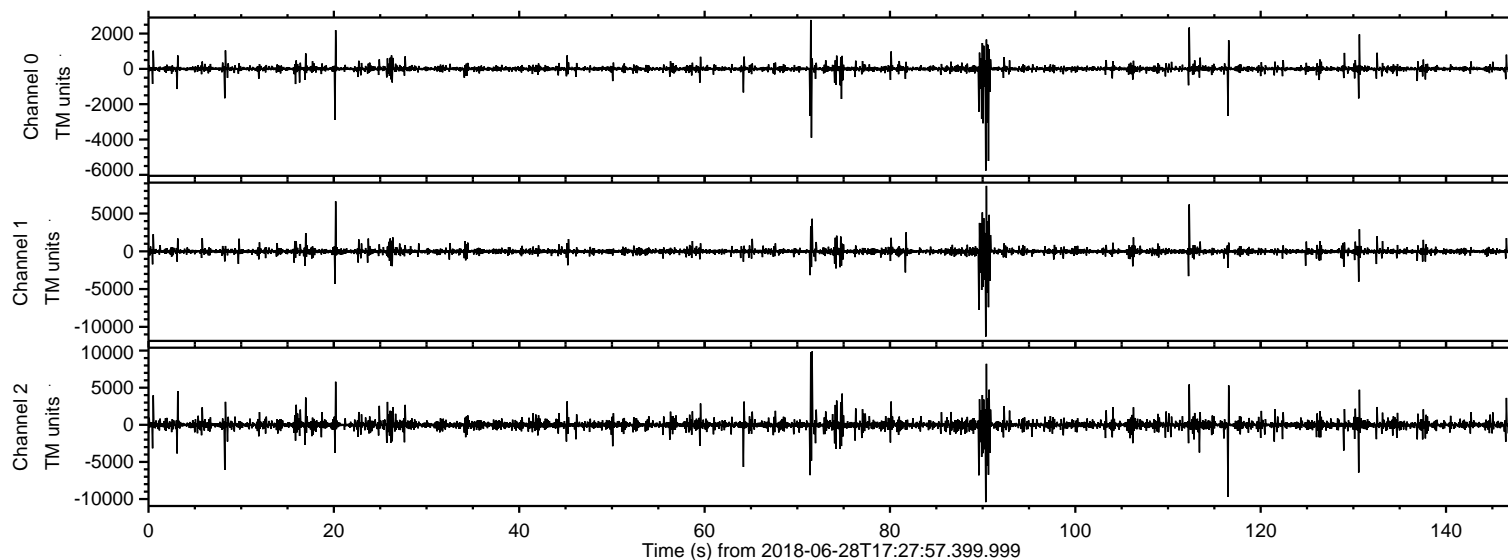
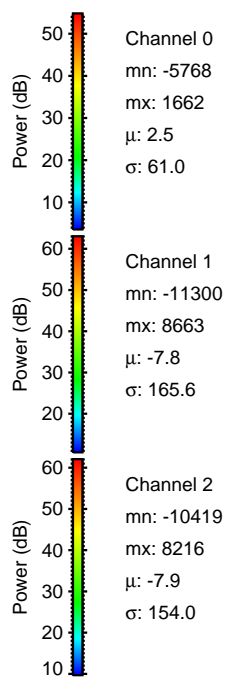
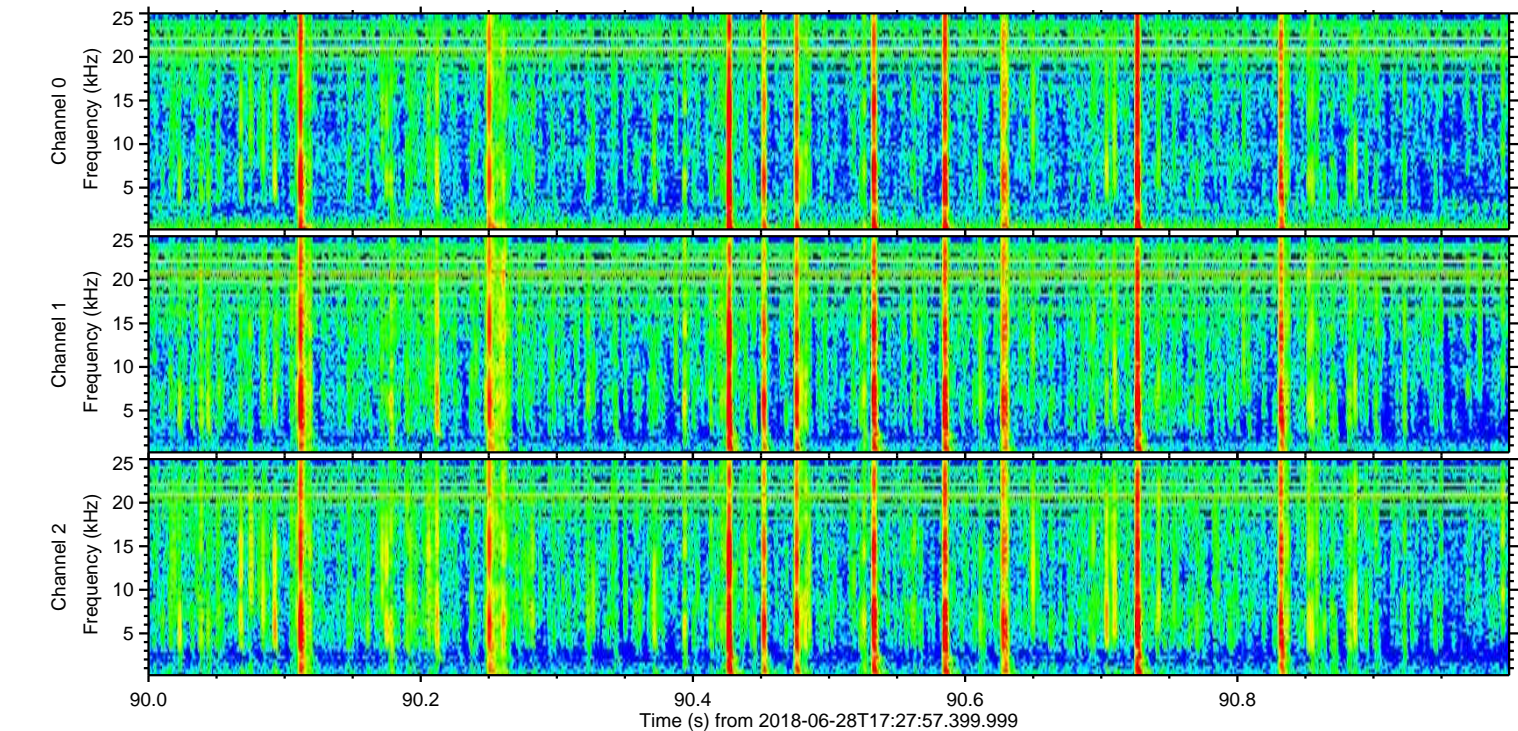
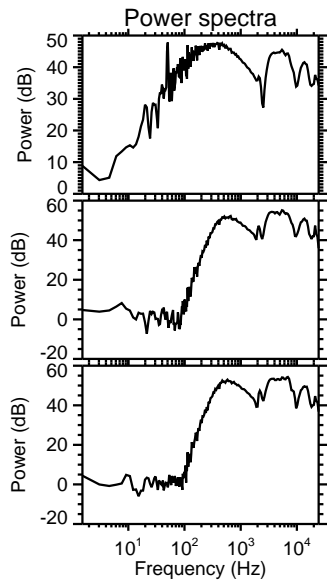
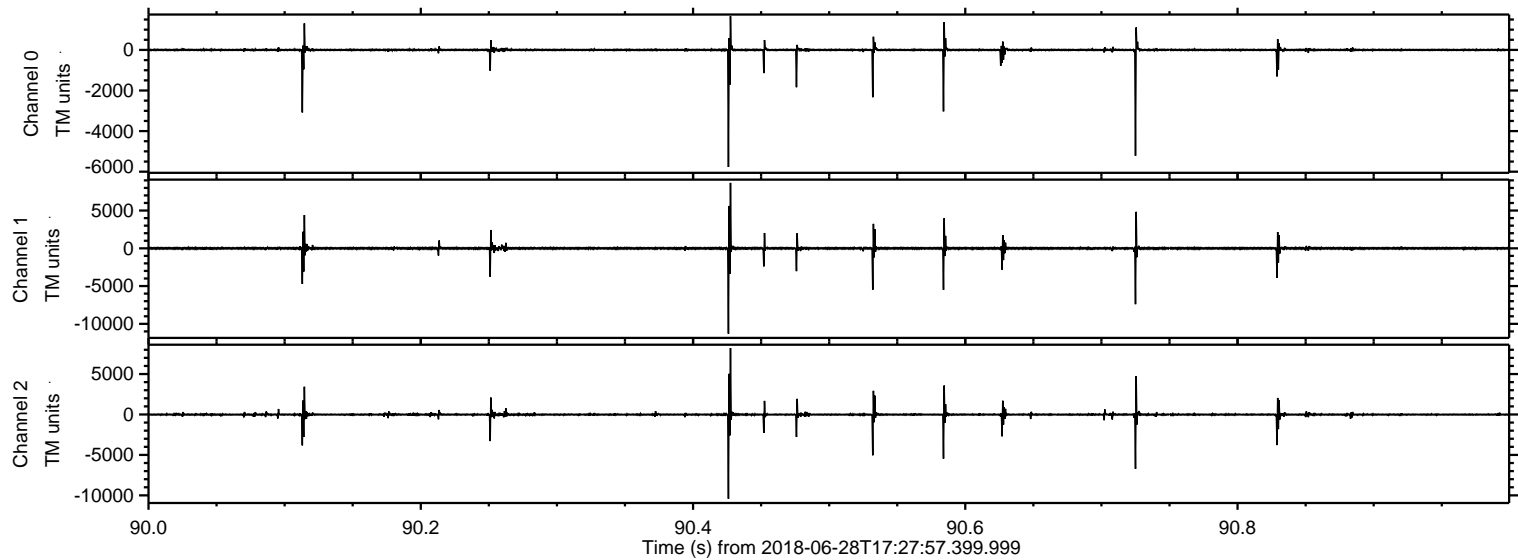


ELMAVAN 3D WAVEFORMS (Measured data sampled at 50 kHz) 51000 packets of 144 samples from 2018-06-28T17:27:57.399.999.

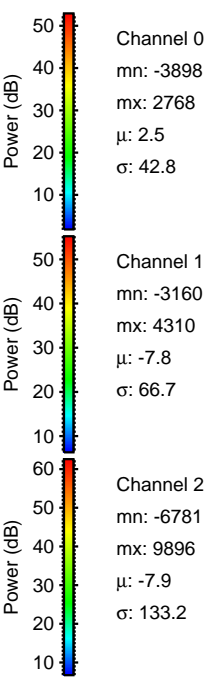
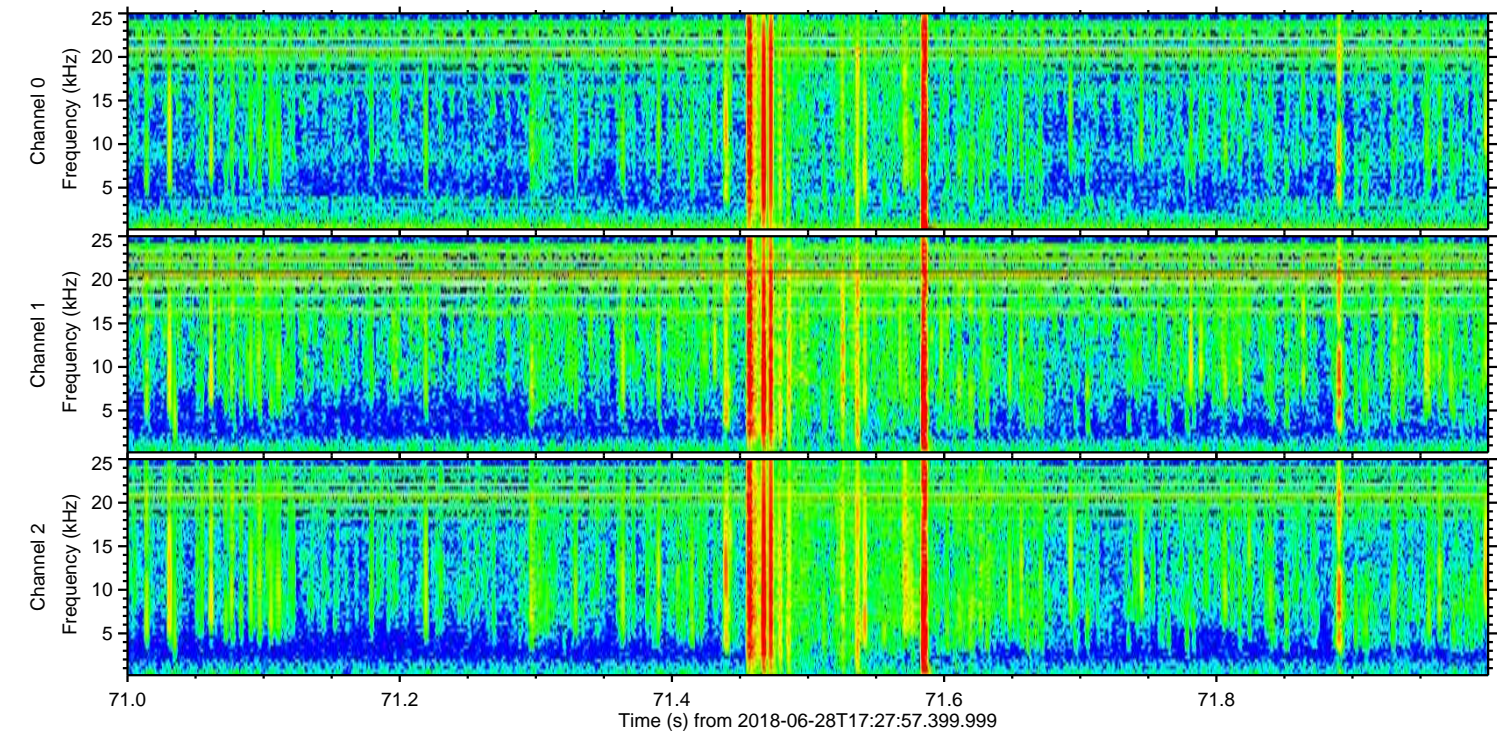
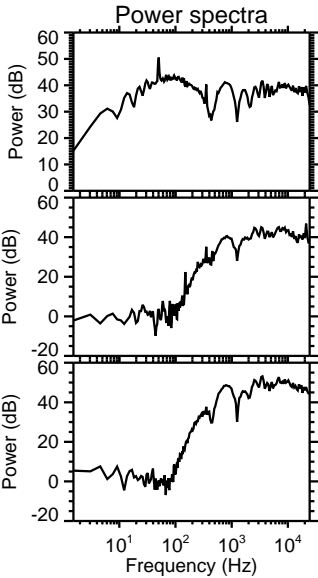
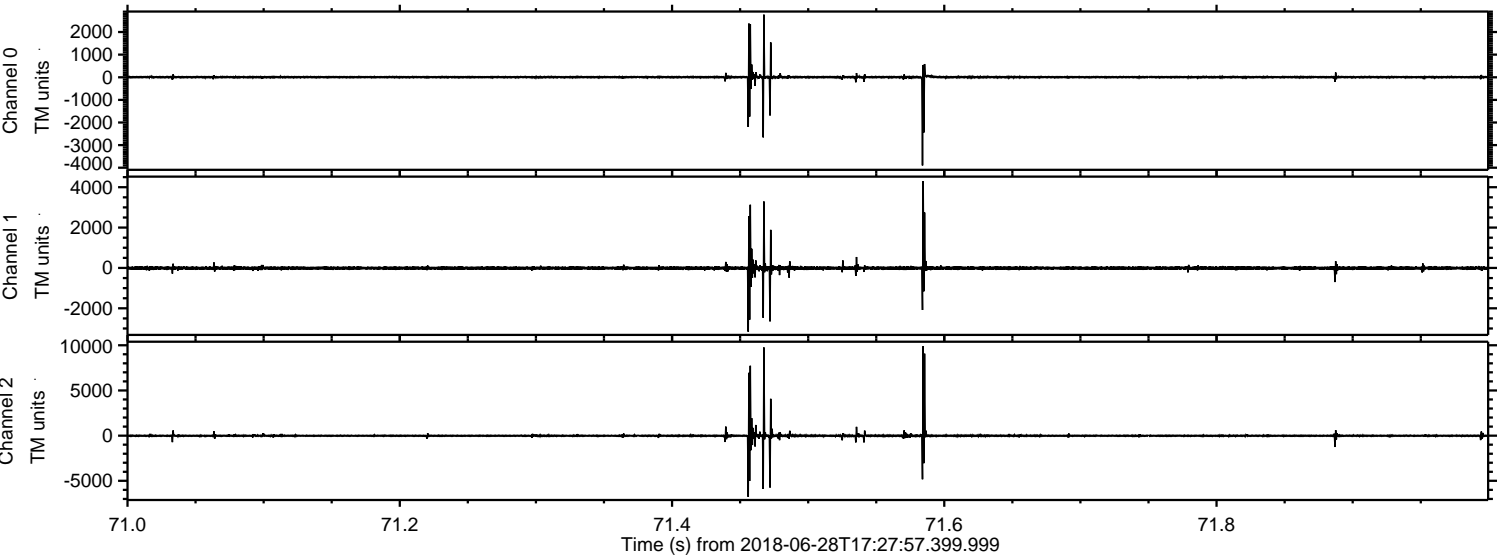
Processed Thu Jun 28 19:35:54 2018 by ELM ver.2012-10-06 from 001__elm20180628_172756__dat00.bin



Processed Thu Jun 28 19:36:00 2018 by ELM ver.2012-10-06 from 001__elm20180628_172756__dat00.bin

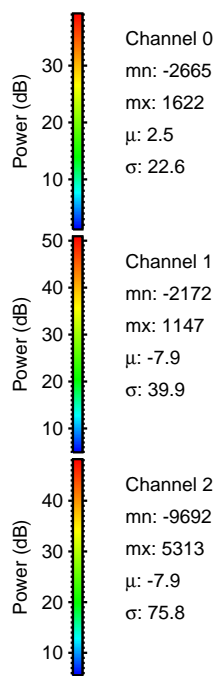
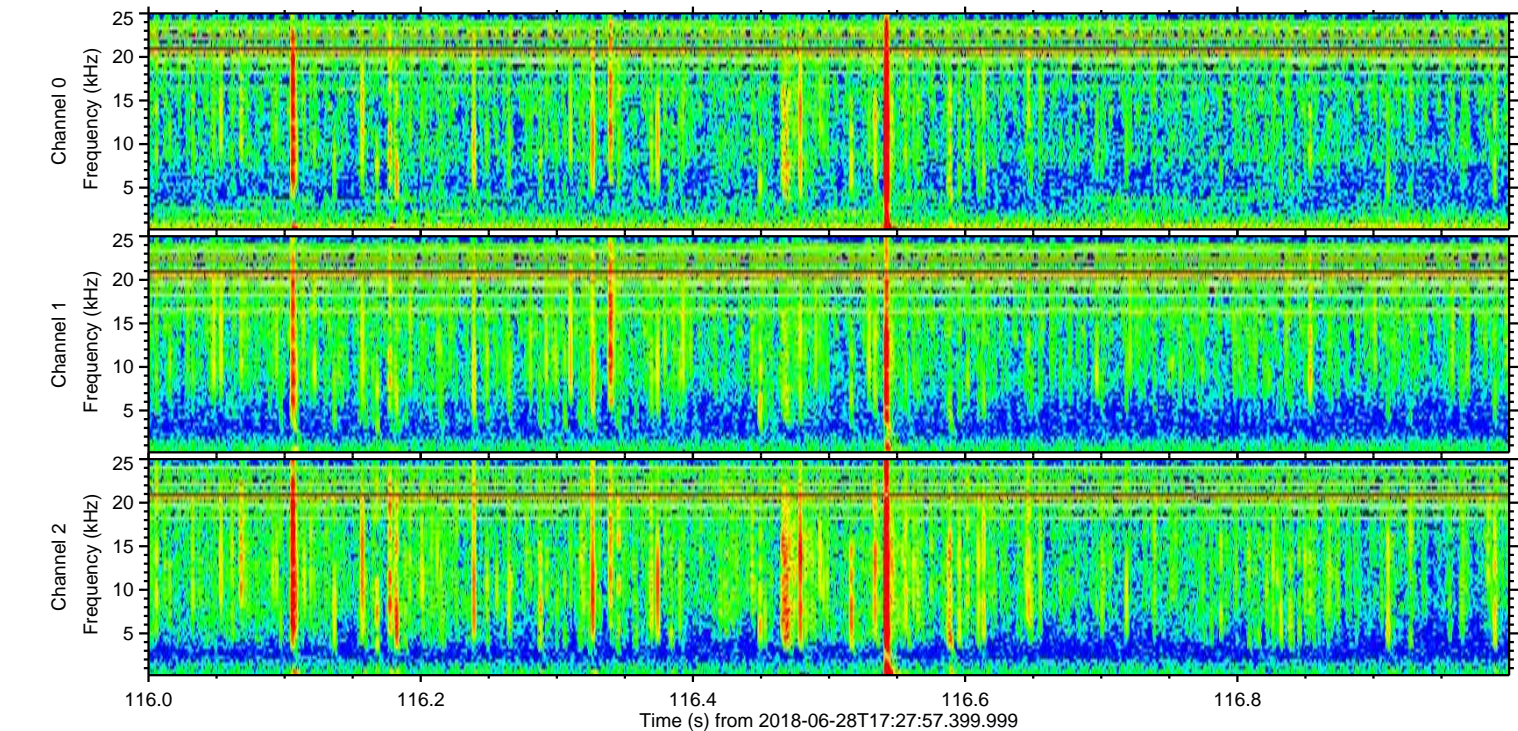
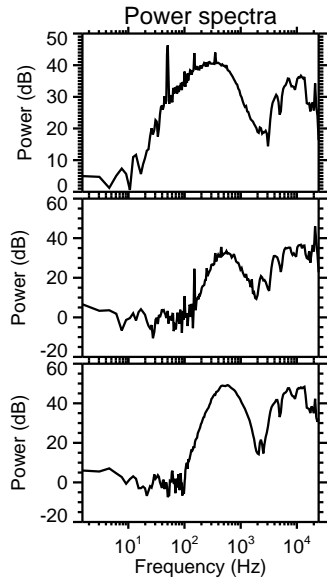
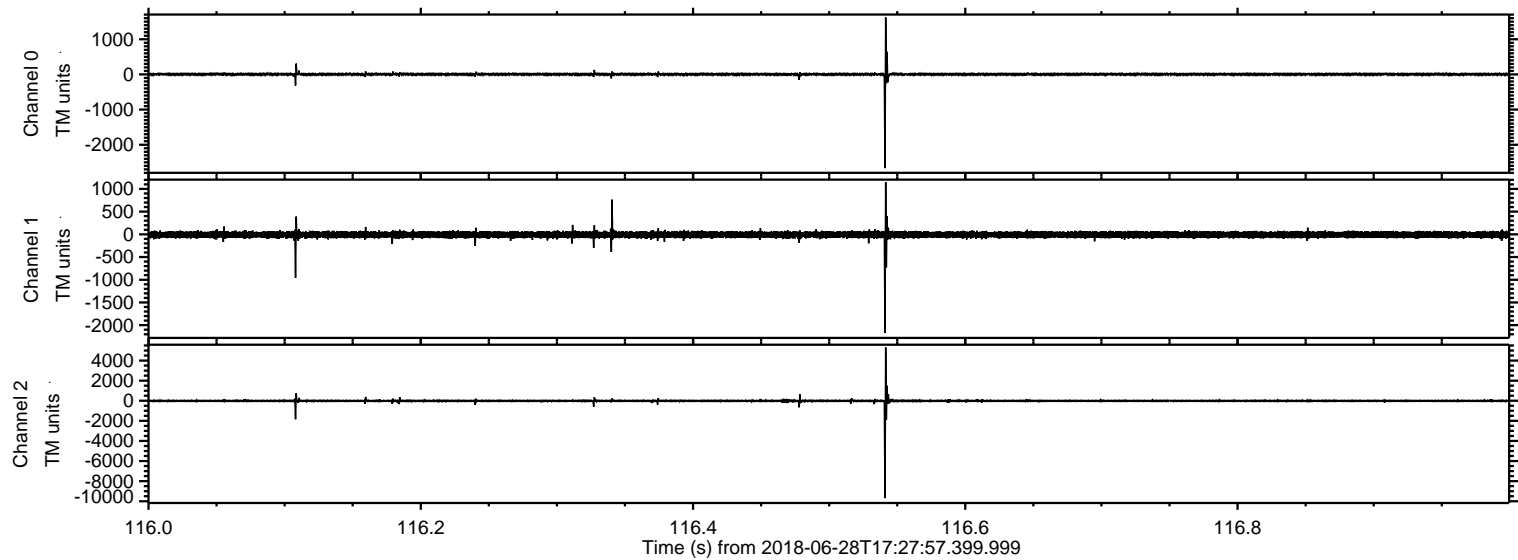


Processed Thu Jun 28 19:36:00 2018 by ELM ver.2012-10-06 from 001__elm20180628_172756__dat00.bin



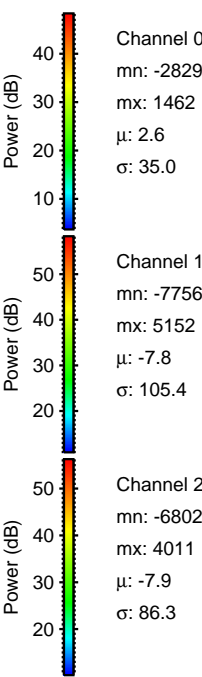
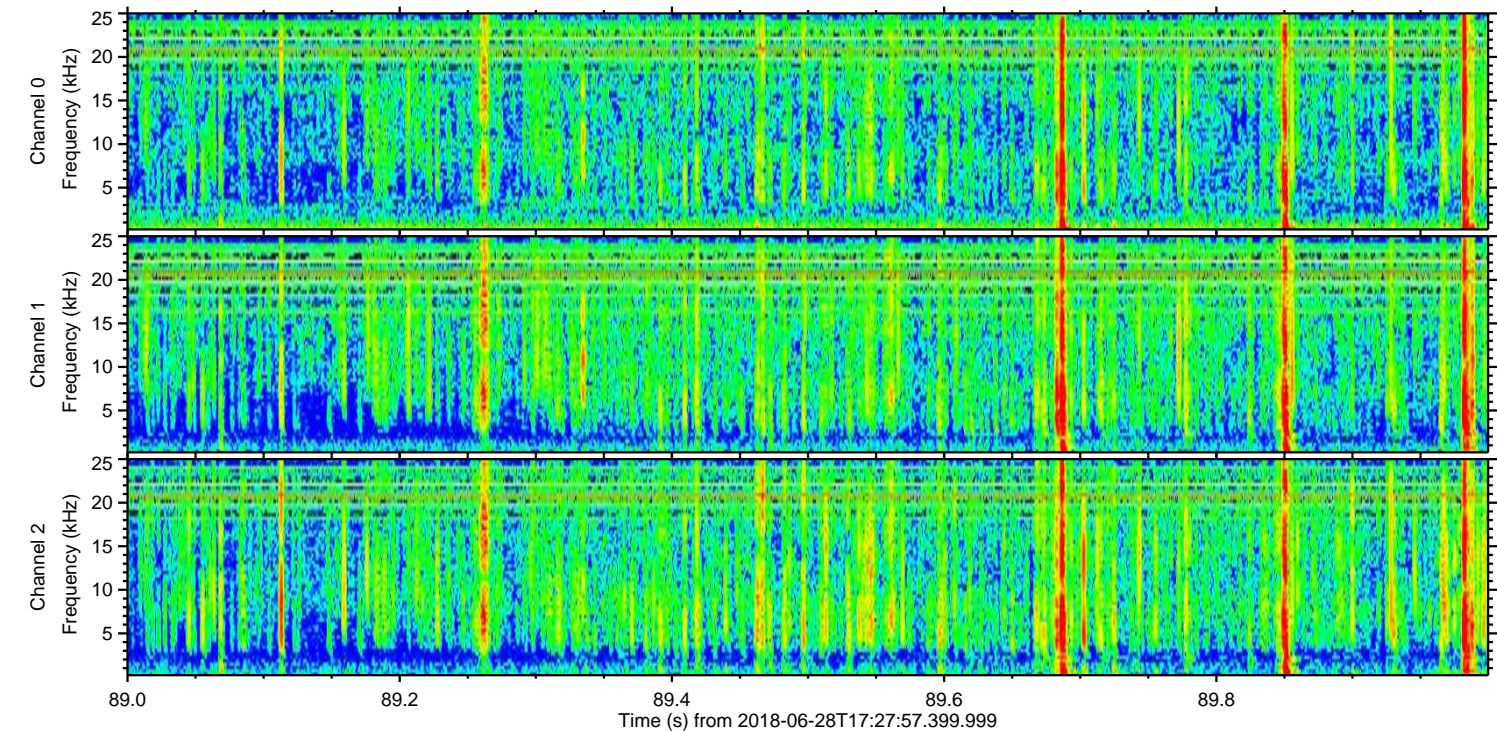
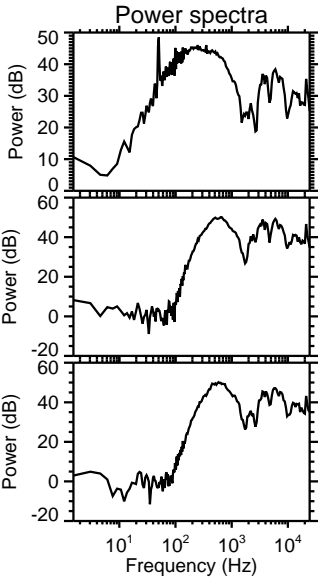
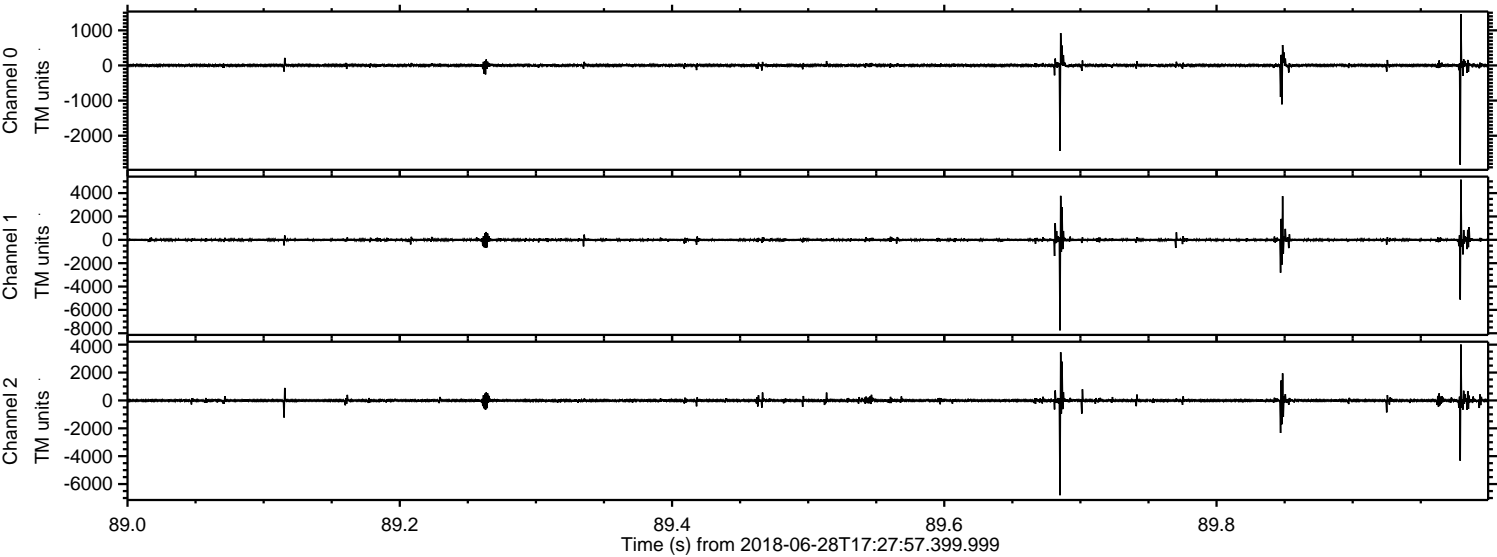
ELMAVAN 3D WAVEFORMS (Measured data sampled at 50 kHz) 51000 packets of 144 samples from 2018-06-28T17:27:57.399.999. Part 117/147

Processed Thu Jun 28 19:36:01 2018 by ELM ver.2012-10-06 from 001__elm20180628_172756__dat00.bin

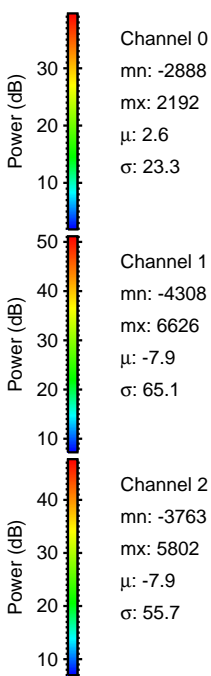
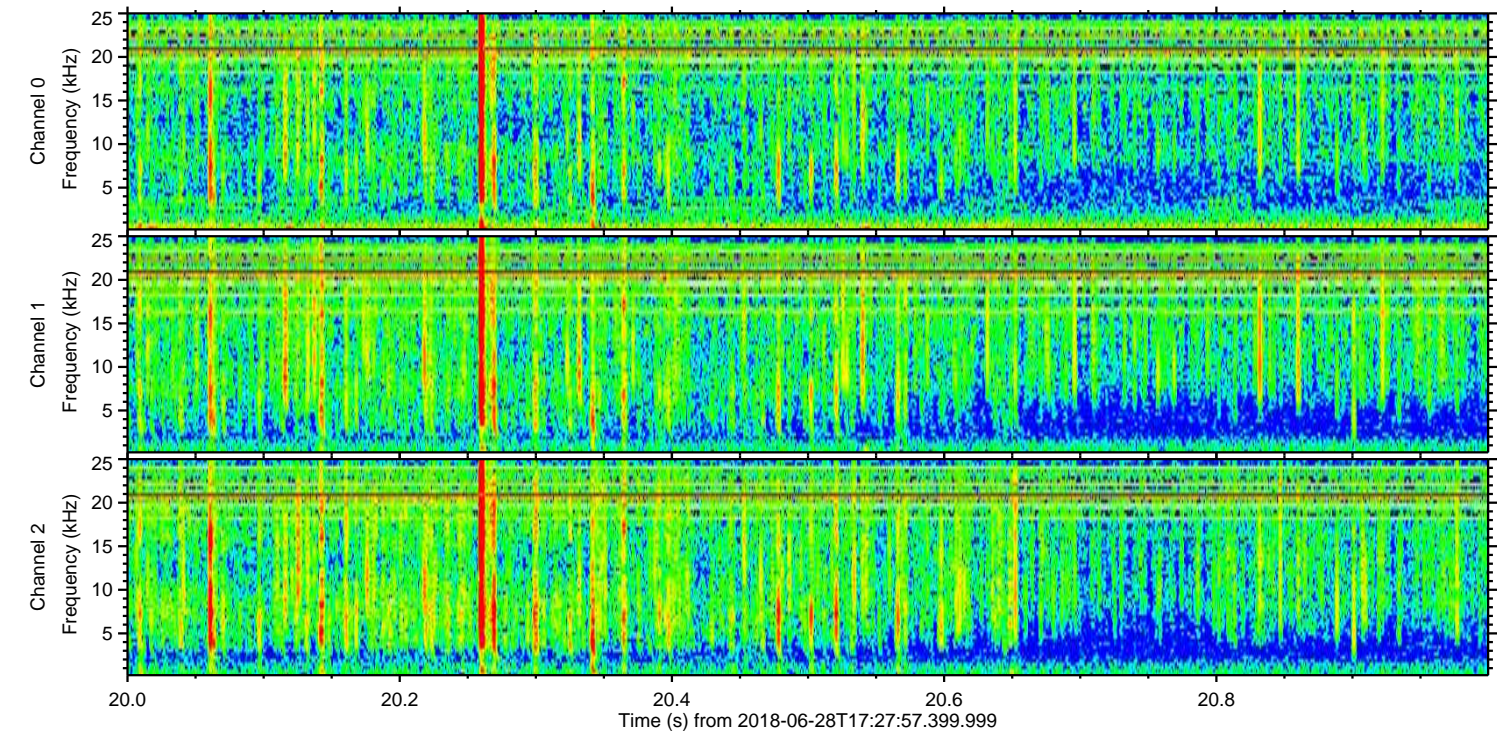
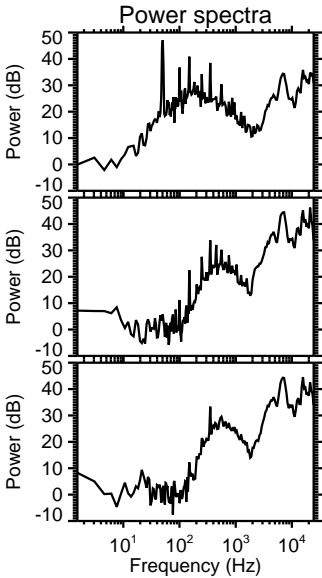
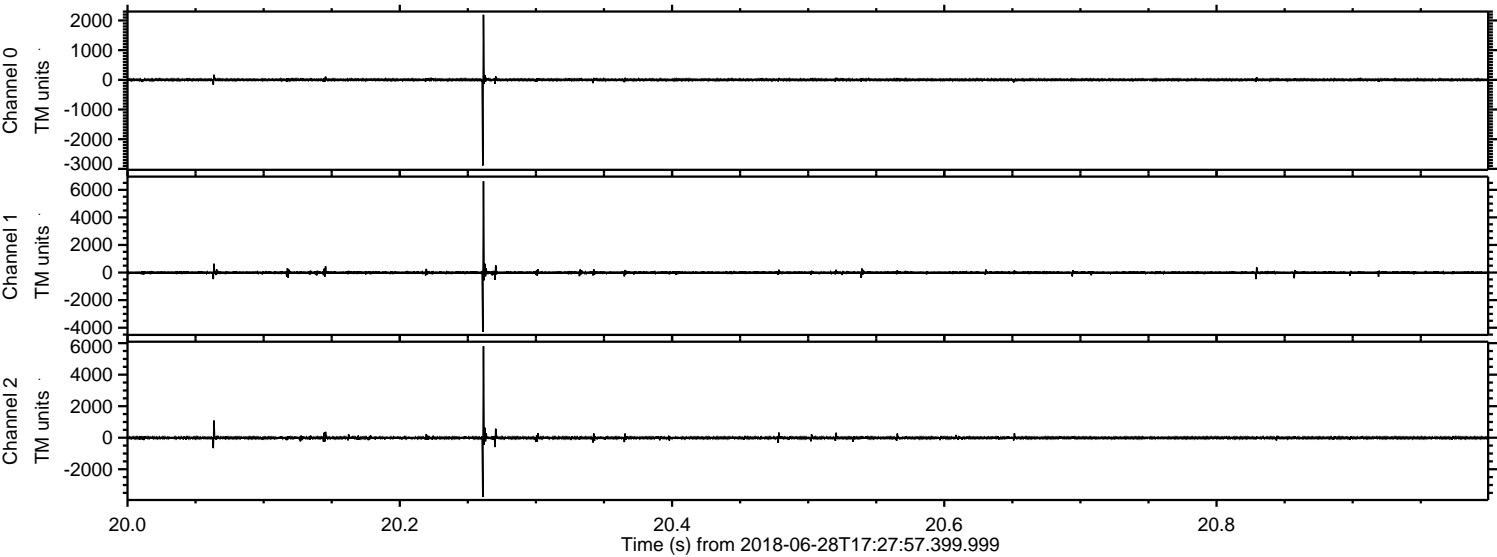


ELMAVAN 3D WAVEFORMS (Measured data sampled at 50 kHz) 51000 packets of 144 samples from 2018-06-28T17:27:57.399.999. Part 90/147

Processed Thu Jun 28 19:36:01 2018 by ELM ver.2012-10-06 from 001__elm20180628_172756__dat00.bin

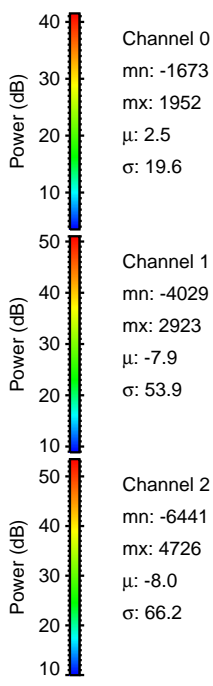
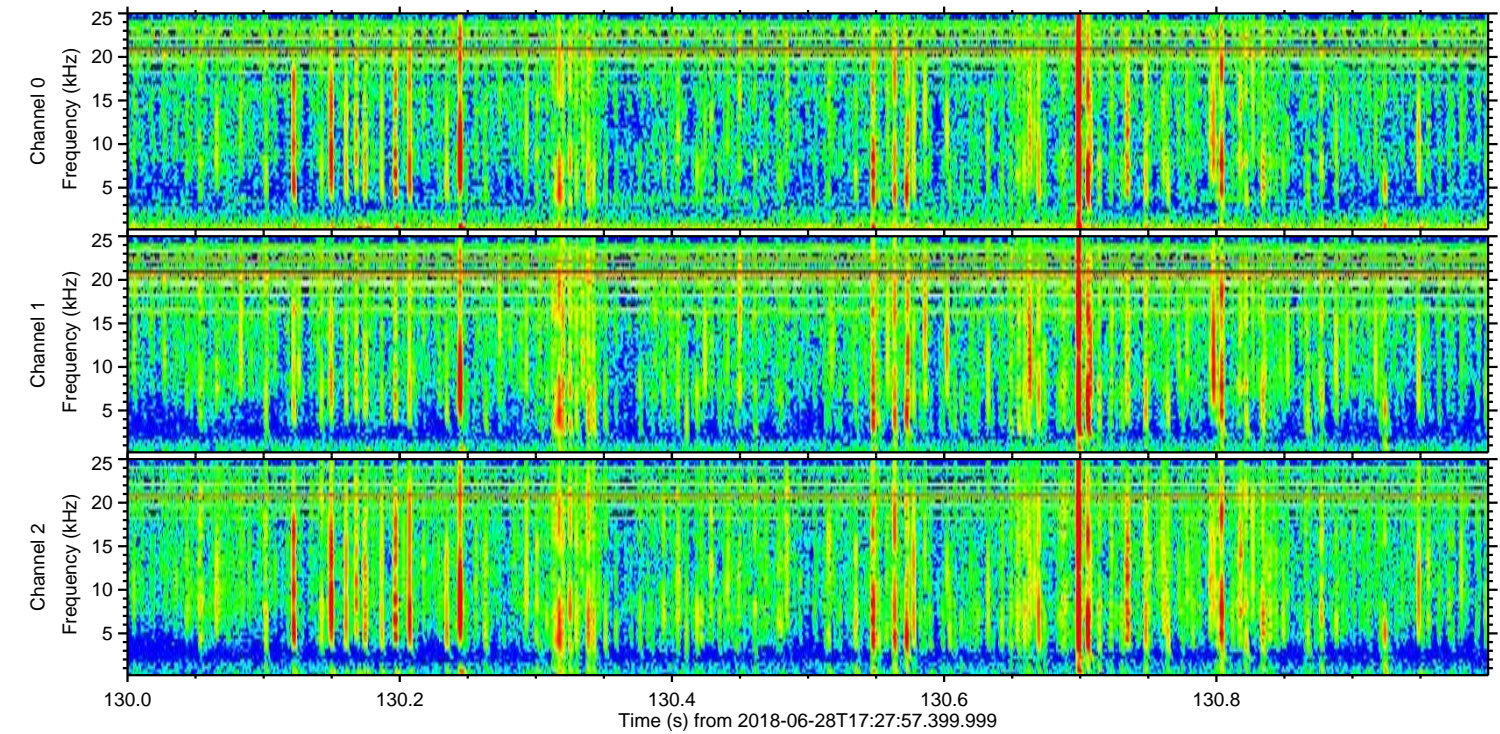
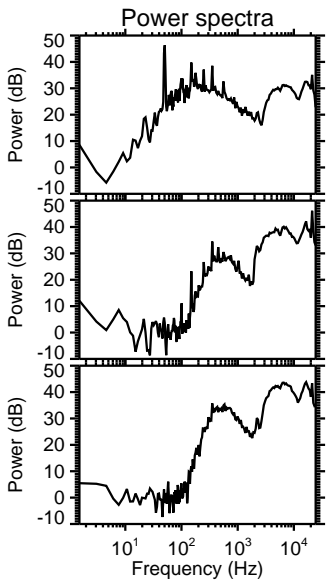
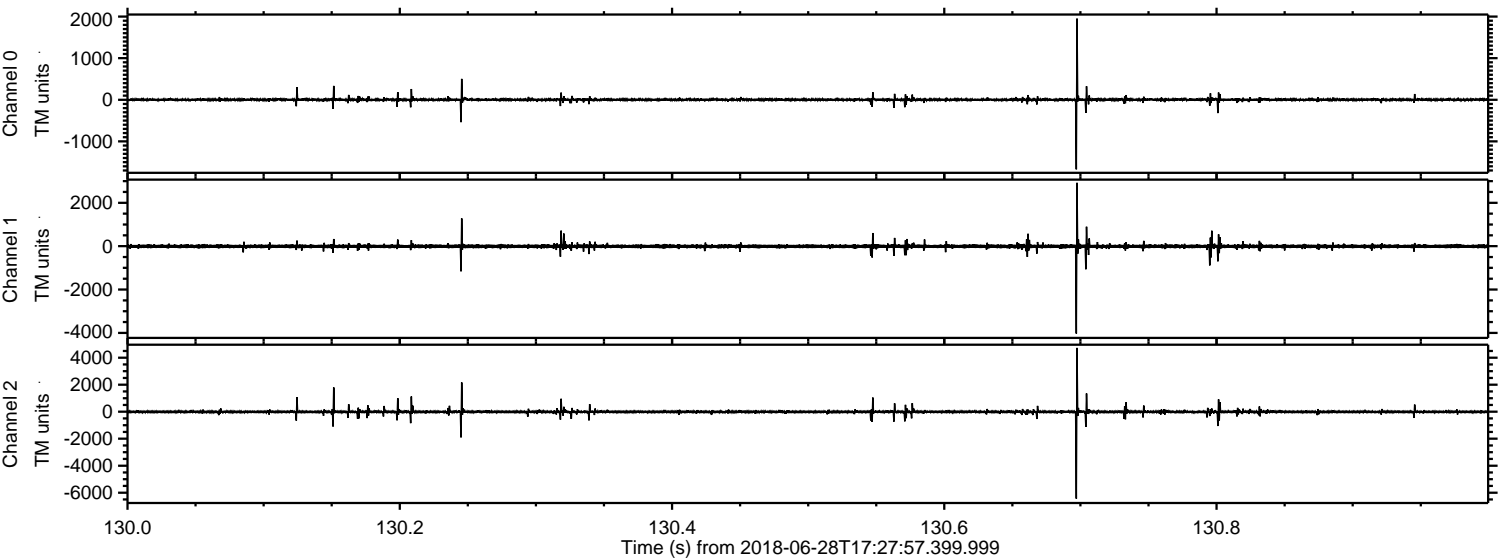


Processed Thu Jun 28 19:36:02 2018 by ELM ver.2012-10-06 from 001__elm20180628_172756__dat00.bin



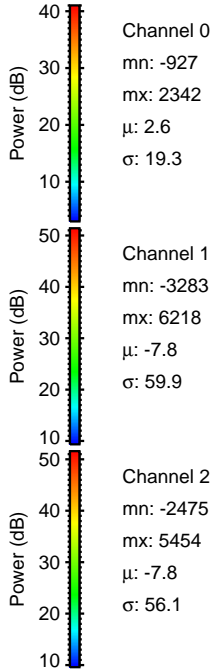
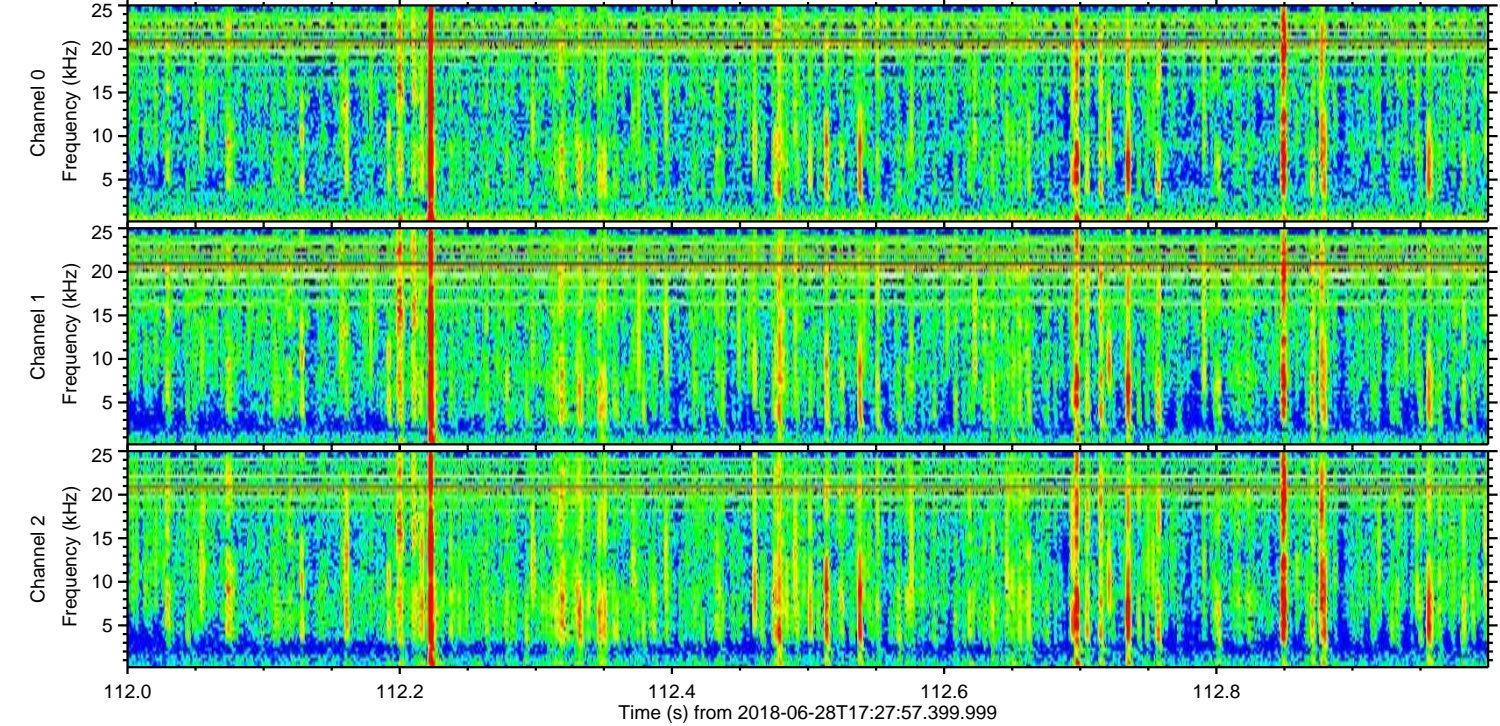
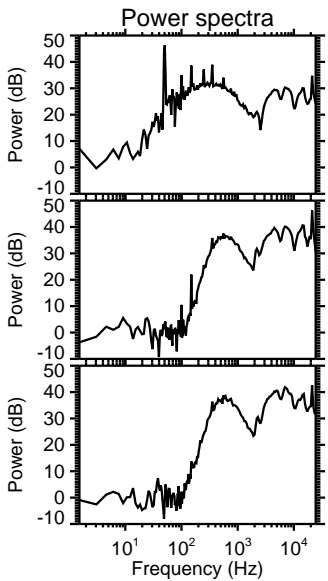
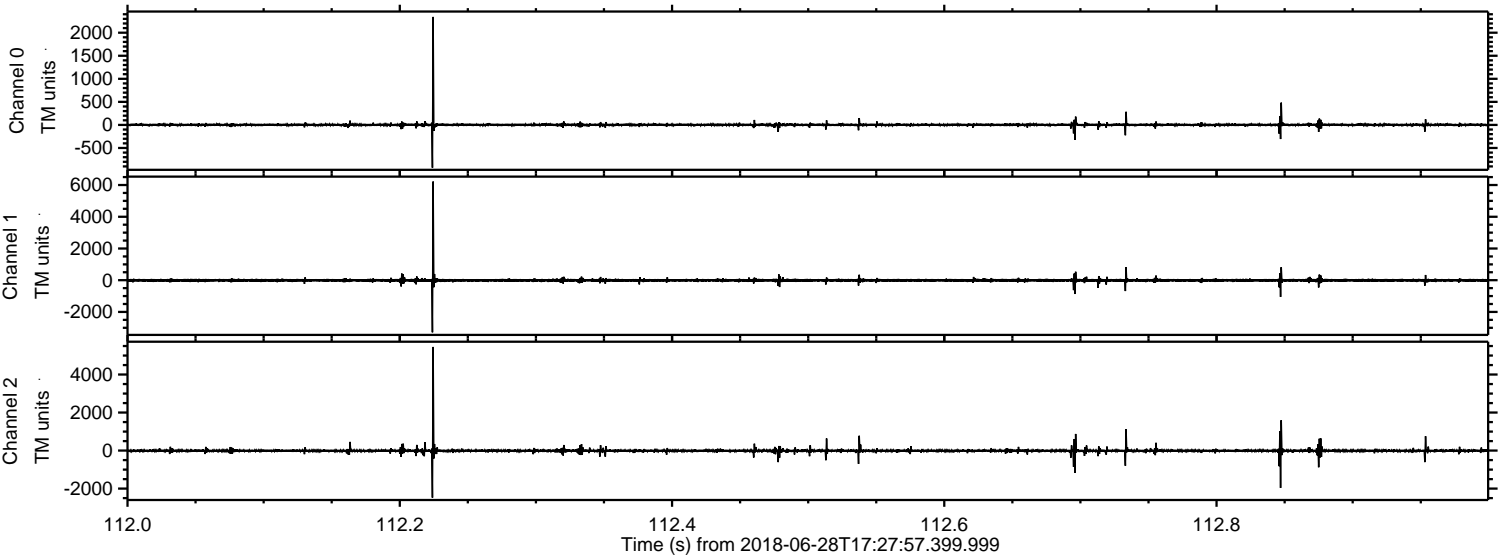
ELMAVAN 3D WAVEFORMS (Measured data sampled at 50 kHz) 51000 packets of 144 samples from 2018-06-28T17:27:57.399.999. Part 131/147

Processed Thu Jun 28 19:36:03 2018 by ELM ver.2012-10-06 from 001__elm20180628_172756__dat00.bin



ELMAVAN 3D WAVEFORMS (Measured data sampled at 50 kHz) 51000 packets of 144 samples from 2018-06-28T17:27:57.399.999. Part 113/147

Processed Thu Jun 28 19:36:03 2018 by ELM ver.2012-10-06 from 001__elm20180628_172756__dat00.bin

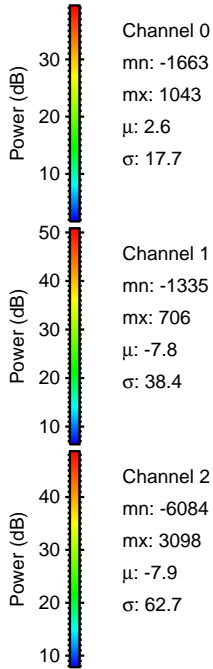
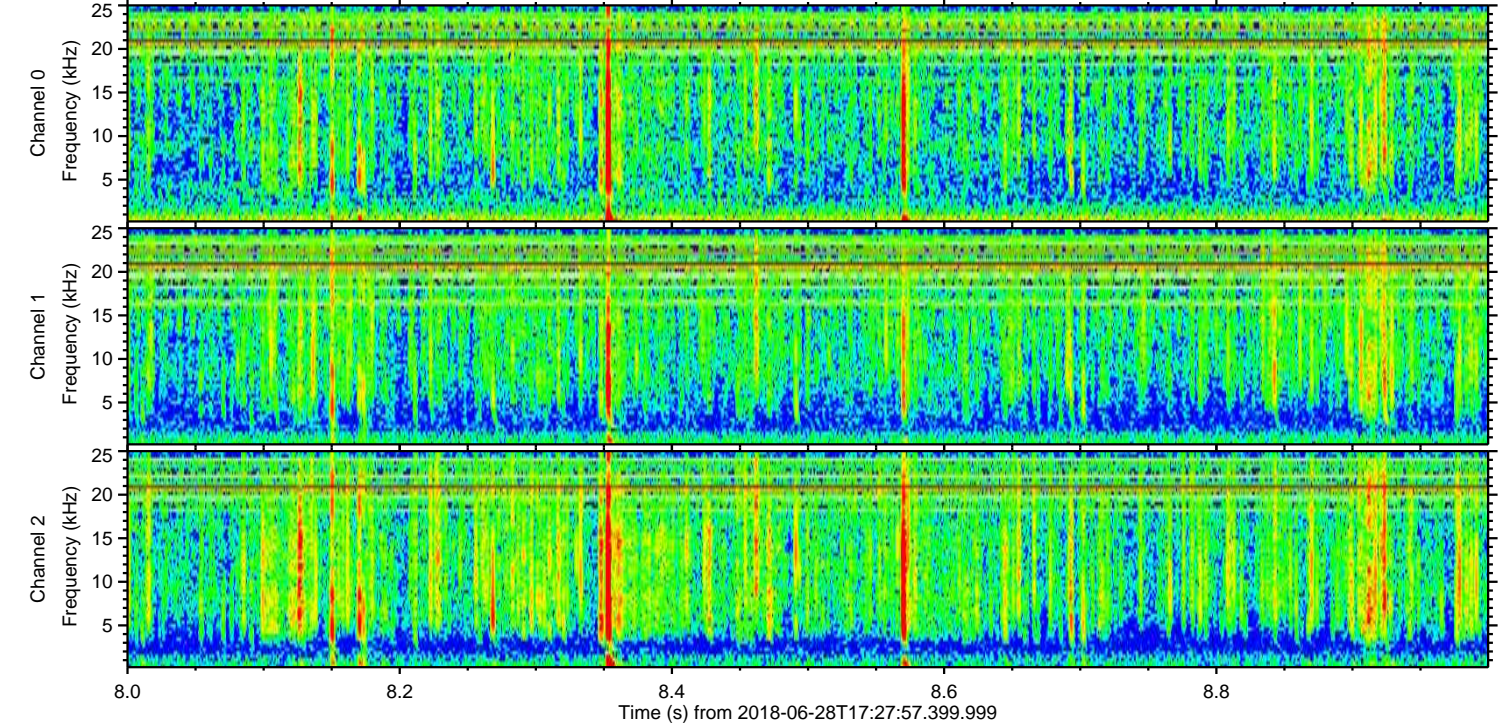
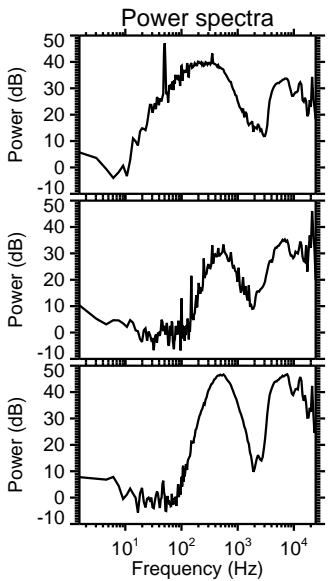
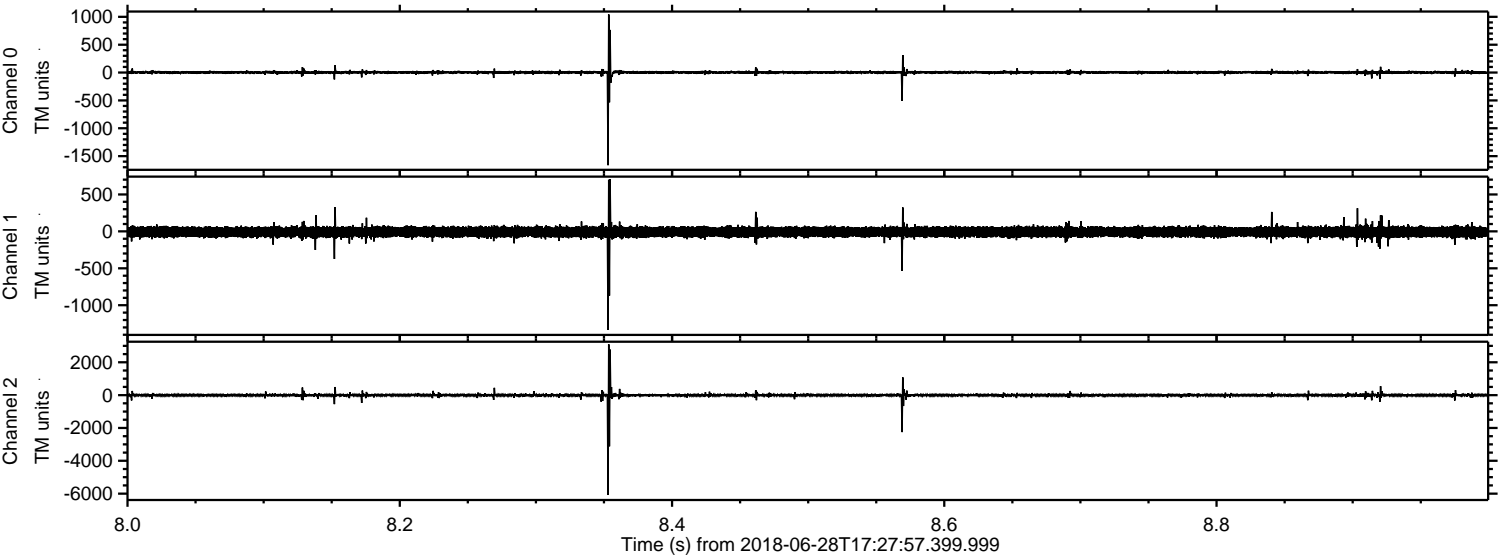


Channel 0
mn: -927
mx: 2342
 μ : 2.6
 σ : 19.3

Channel 1
mn: -3283
mx: 6218
 μ : -7.8
 σ : 59.9

Channel 2
mn: -2475
mx: 5454
 μ : -7.8
 σ : 56.1

Processed Thu Jun 28 19:36:04 2018 by ELM ver.2012-10-06 from 001__elm20180628_172756__dat00.bin

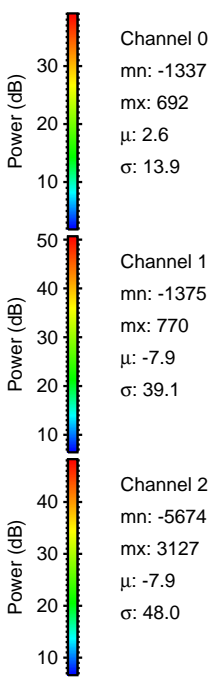
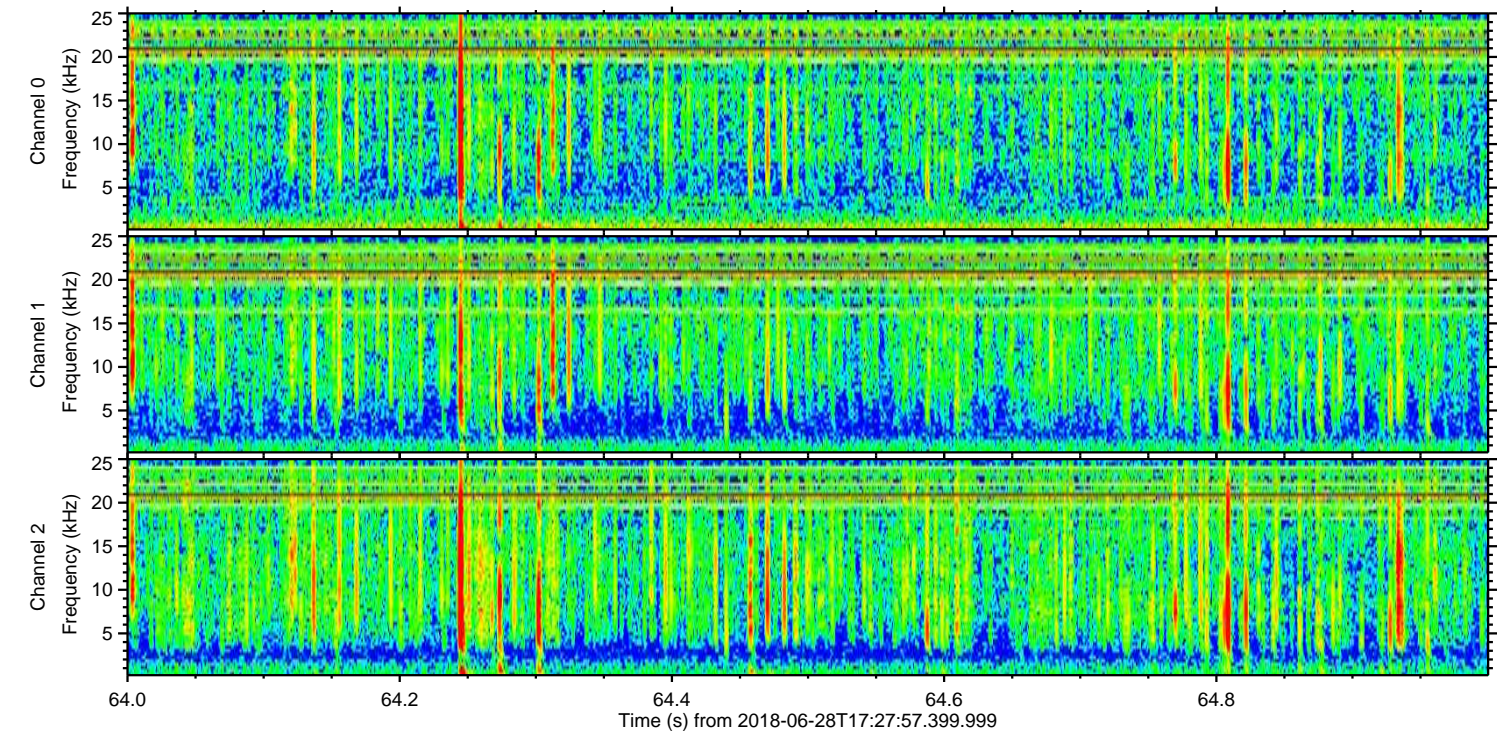
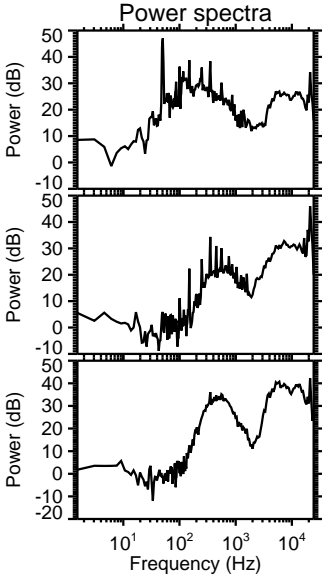
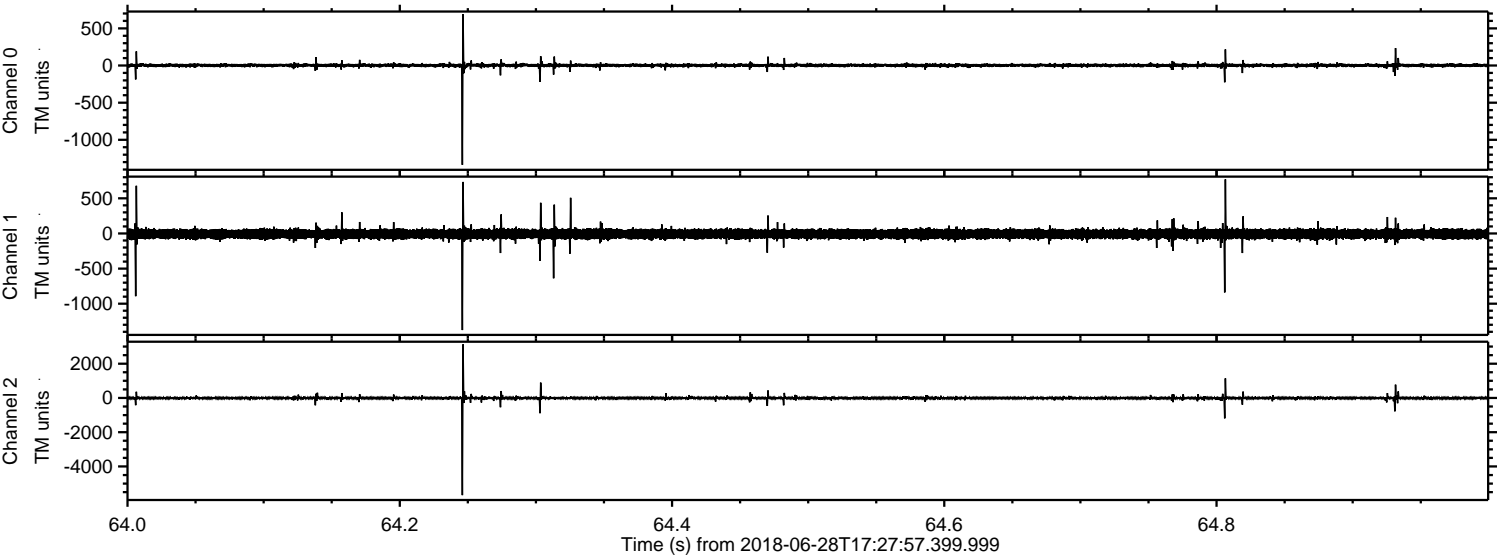


Channel 0
mn: -1663
mx: 1043
 μ : 2.6
 σ : 17.7

Channel 1
mn: -1335
mx: 706
 μ : -7.8
 σ : 38.4

Channel 2
mn: -6084
mx: 3098
 μ : -7.9
 σ : 62.7

Processed Thu Jun 28 19:36:05 2018 by ELM ver.2012-10-06 from 001__elm20180628_172756__dat00.bin



Channel 0
mn: -1337
mx: 692
 μ : 2.6
 σ : 13.9

Channel 1
mn: -1375
mx: 770
 μ : -7.9
 σ : 39.1

Channel 2
mn: -5674
mx: 3127
 μ : -7.9
 σ : 48.0

Processed Thu Jun 28 19:36:06 2018 by ELM ver.2012-10-06 from 001__elm20180628_172756__dat00.bin

