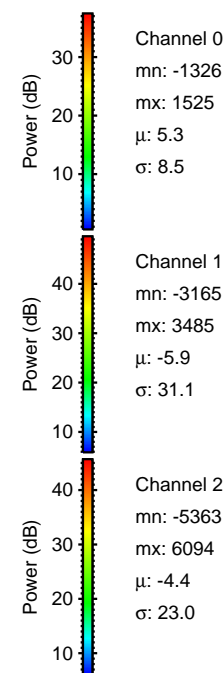
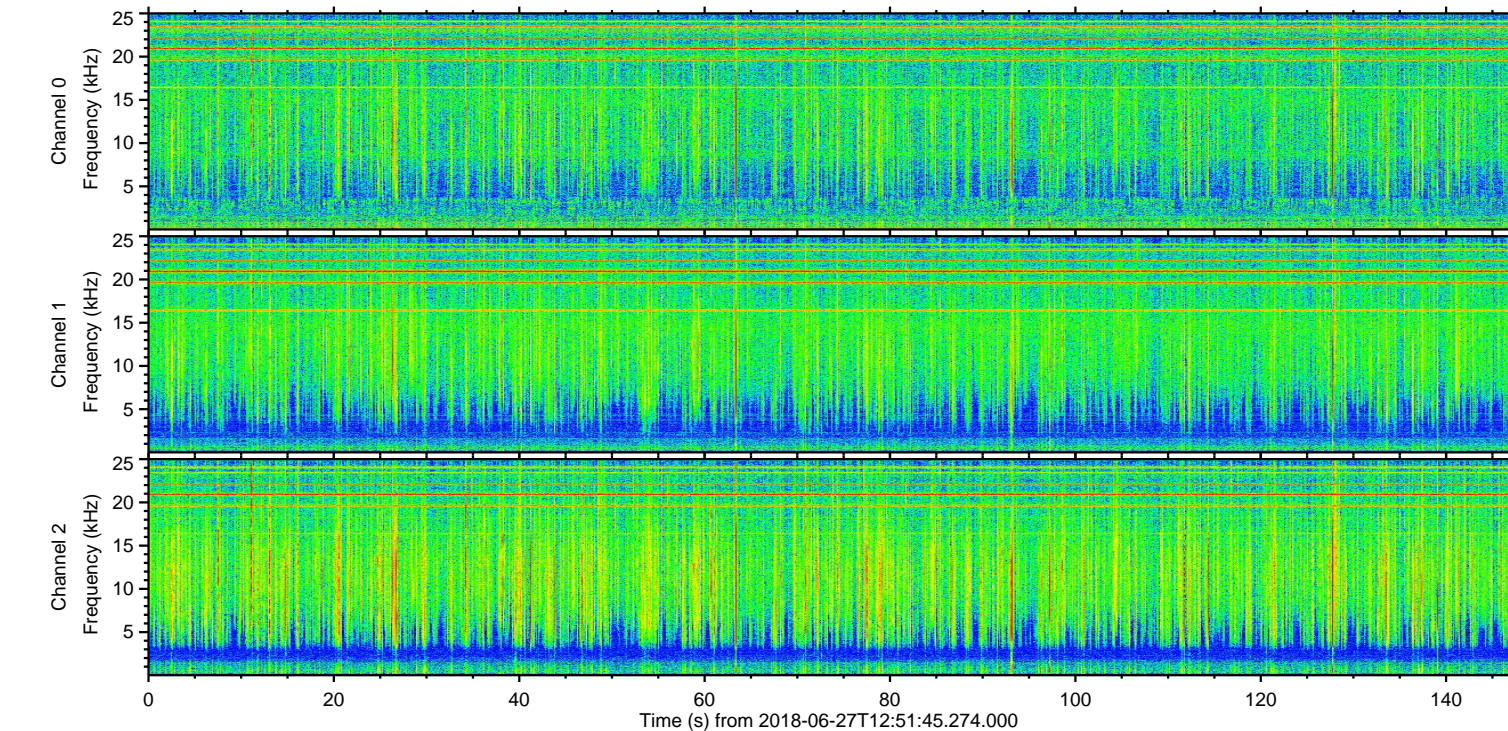
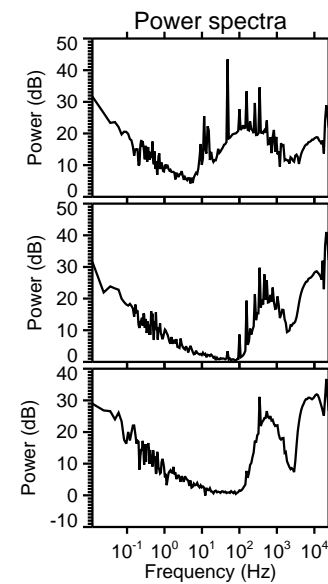
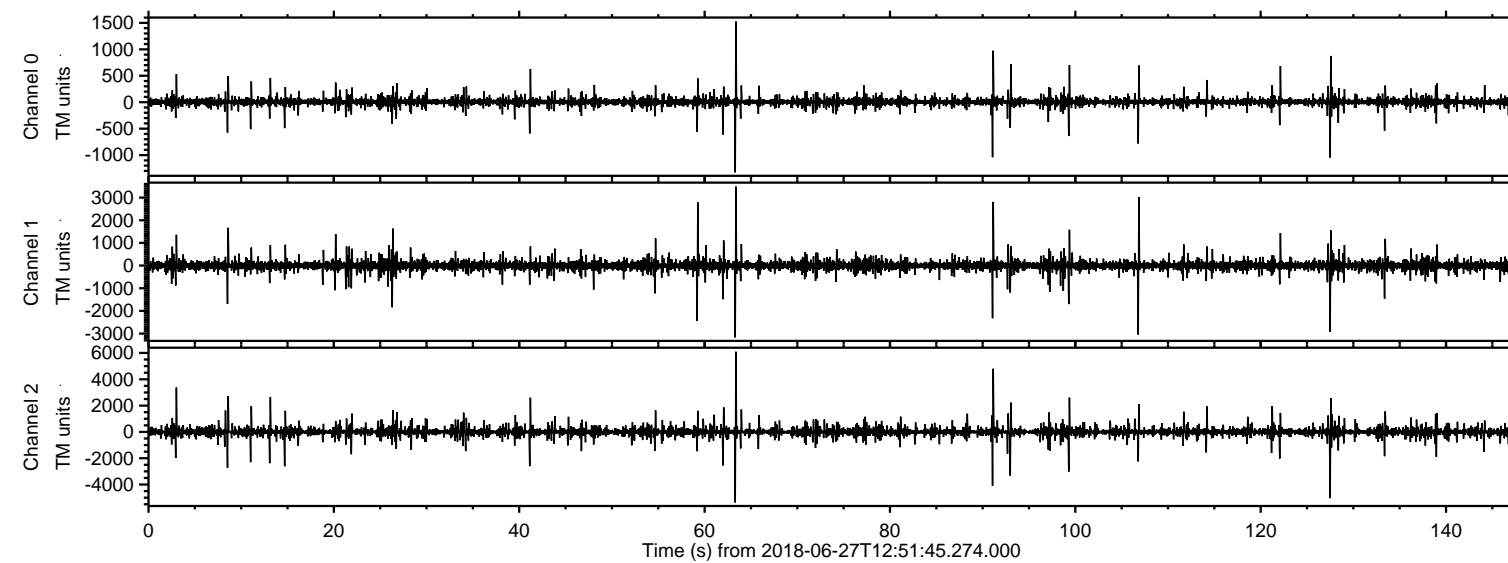
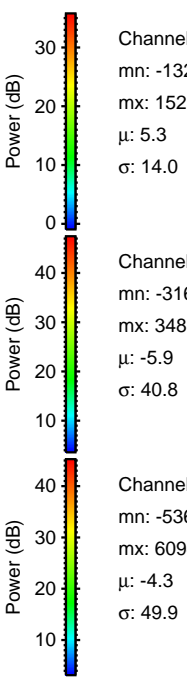
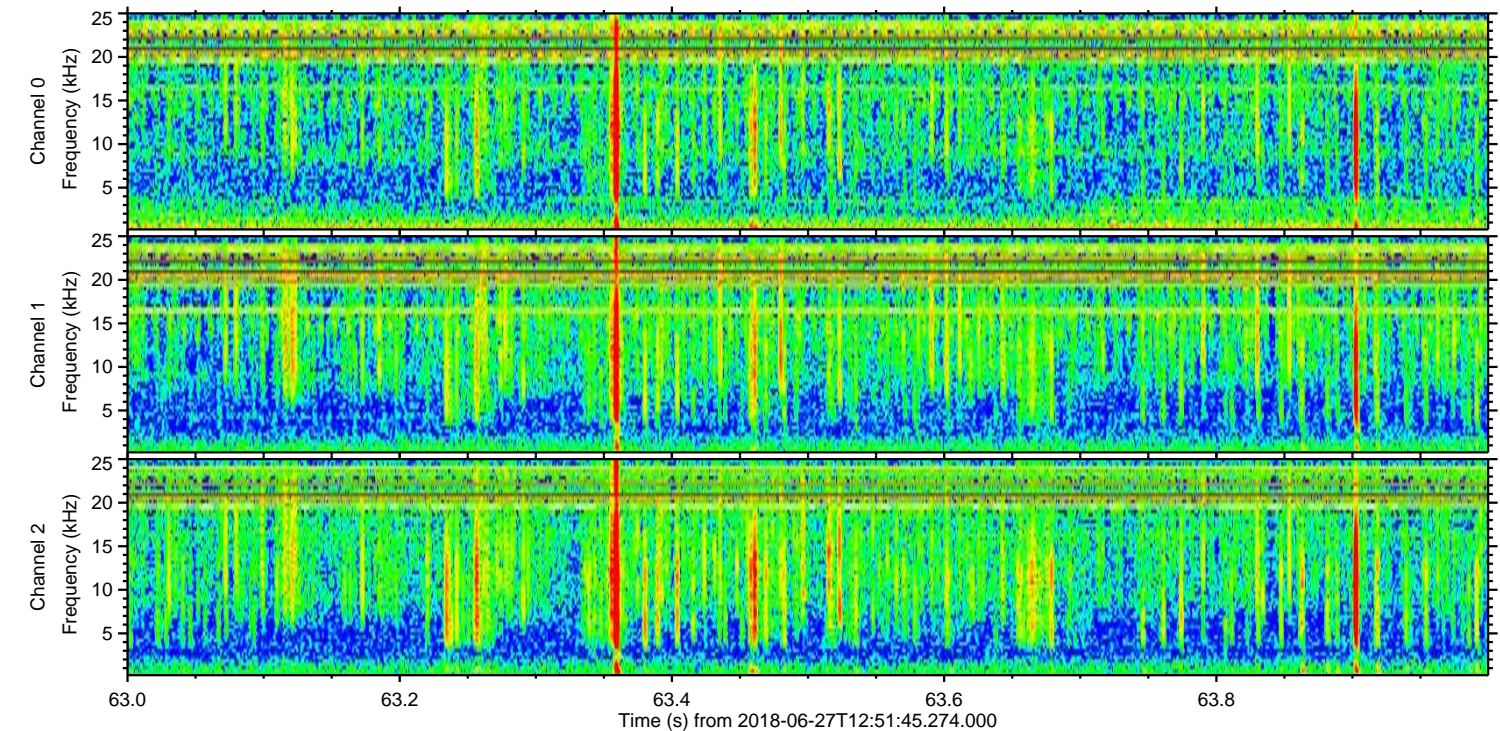
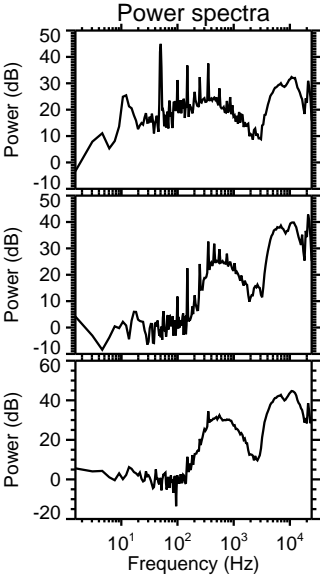
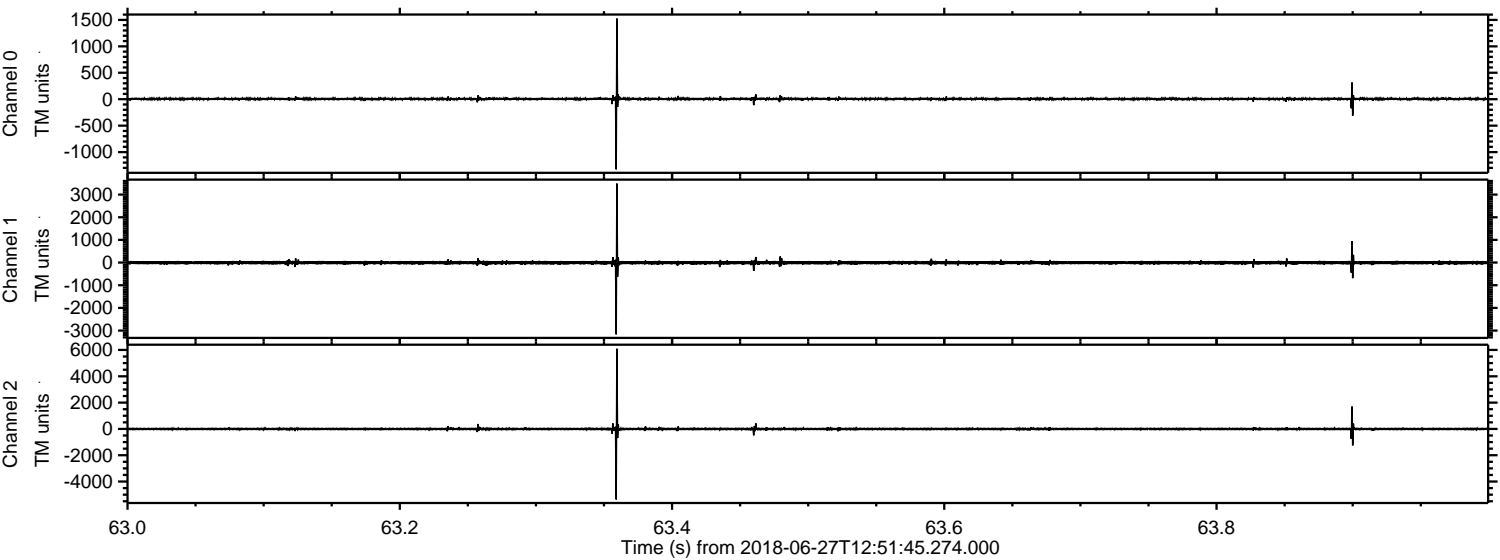


ELMAVAN 3D WAVEFORMS (Measured data sampled at 50 kHz) 51000 packets of 144 samples from 2018-06-27T12:51:45.274.000.

Processed Wed Jun 27 14:59:42 2018 by ELM ver.2012-10-06 from 001__elm20180627_125144__dat00.bin

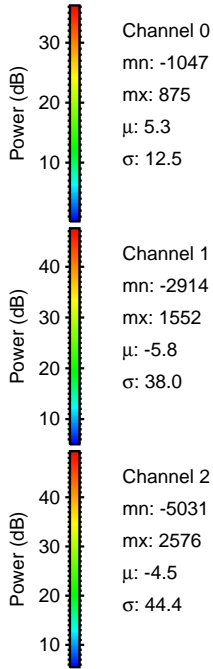
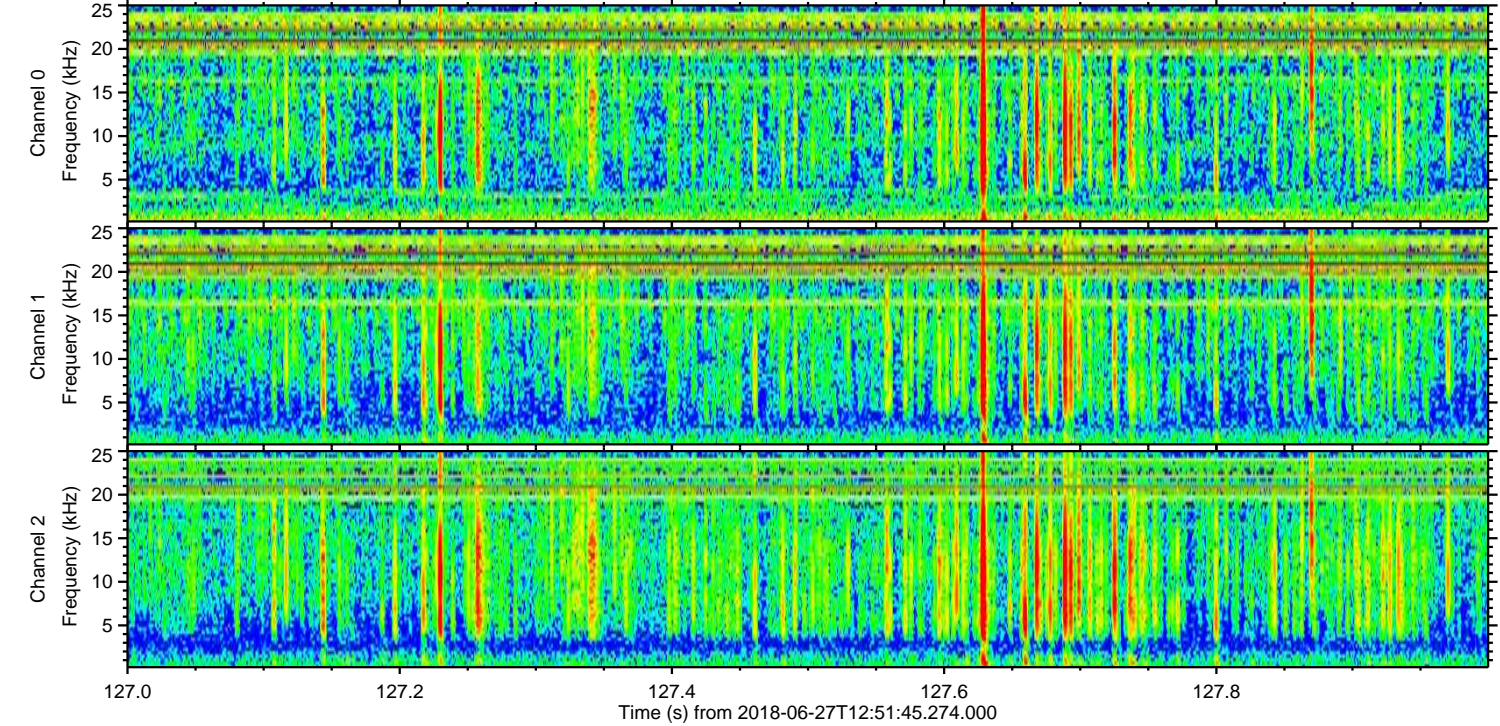
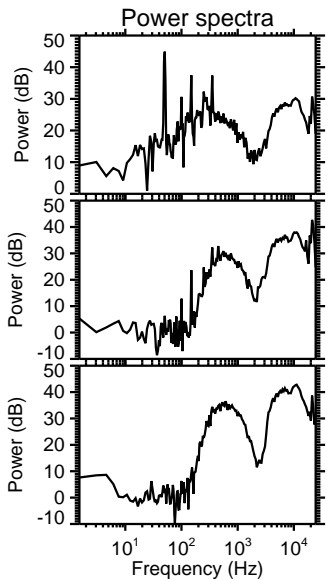
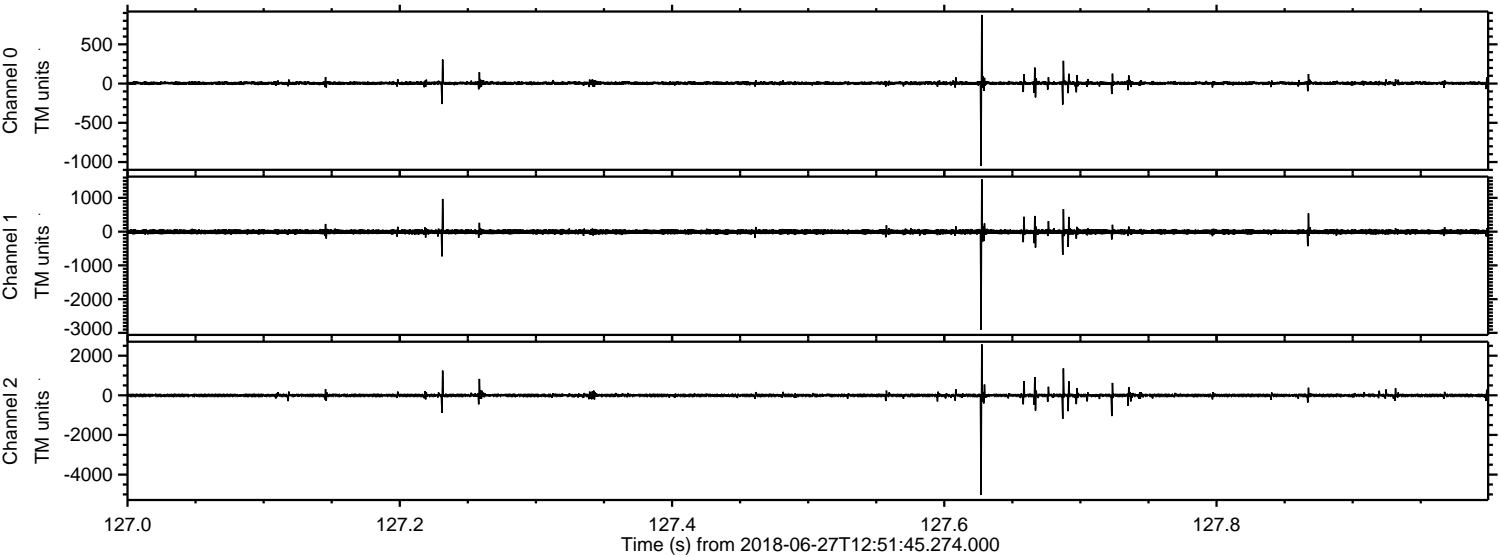


Processed Wed Jun 27 14:59:48 2018 by ELM ver.2012-10-06 from 001__elm20180627_125144__dat00.bin

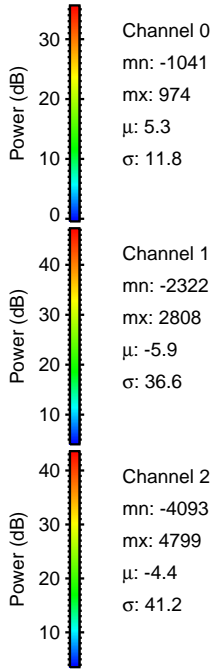
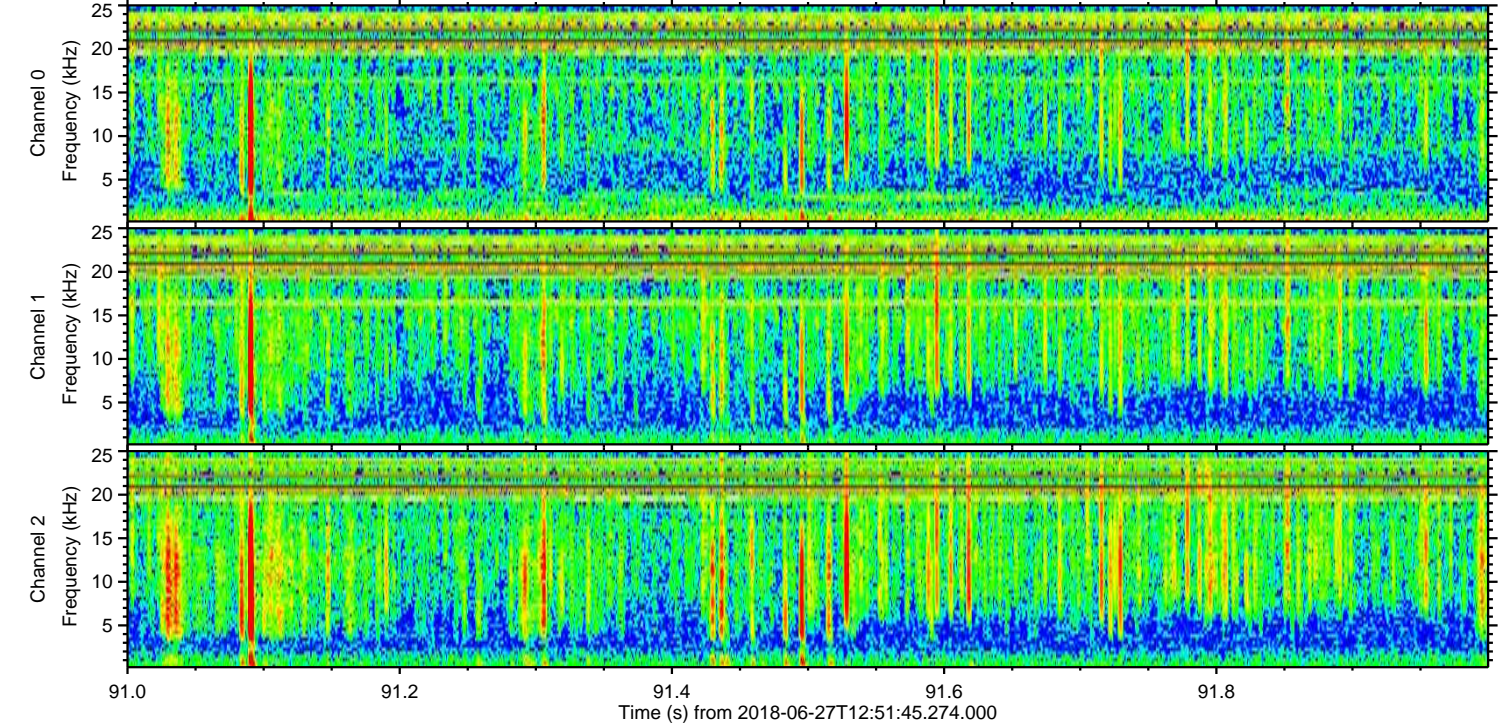
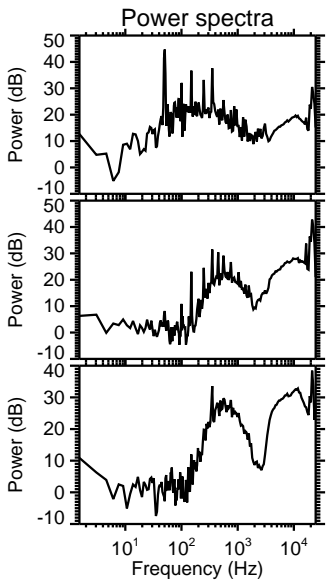
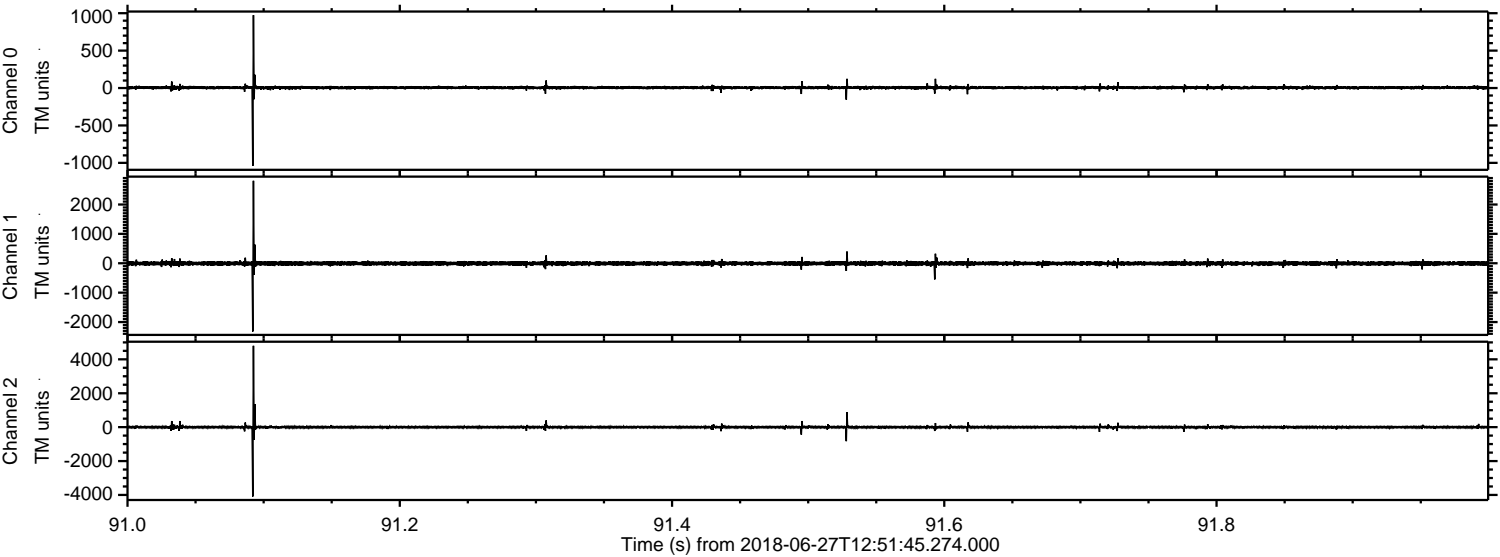


ELMAVAN 3D WAVEFORMS (Measured data sampled at 50 kHz) 51000 packets of 144 samples from 2018-06-27T12:51:45.274.000. Part 128/147

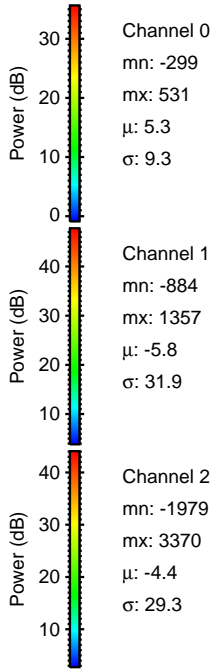
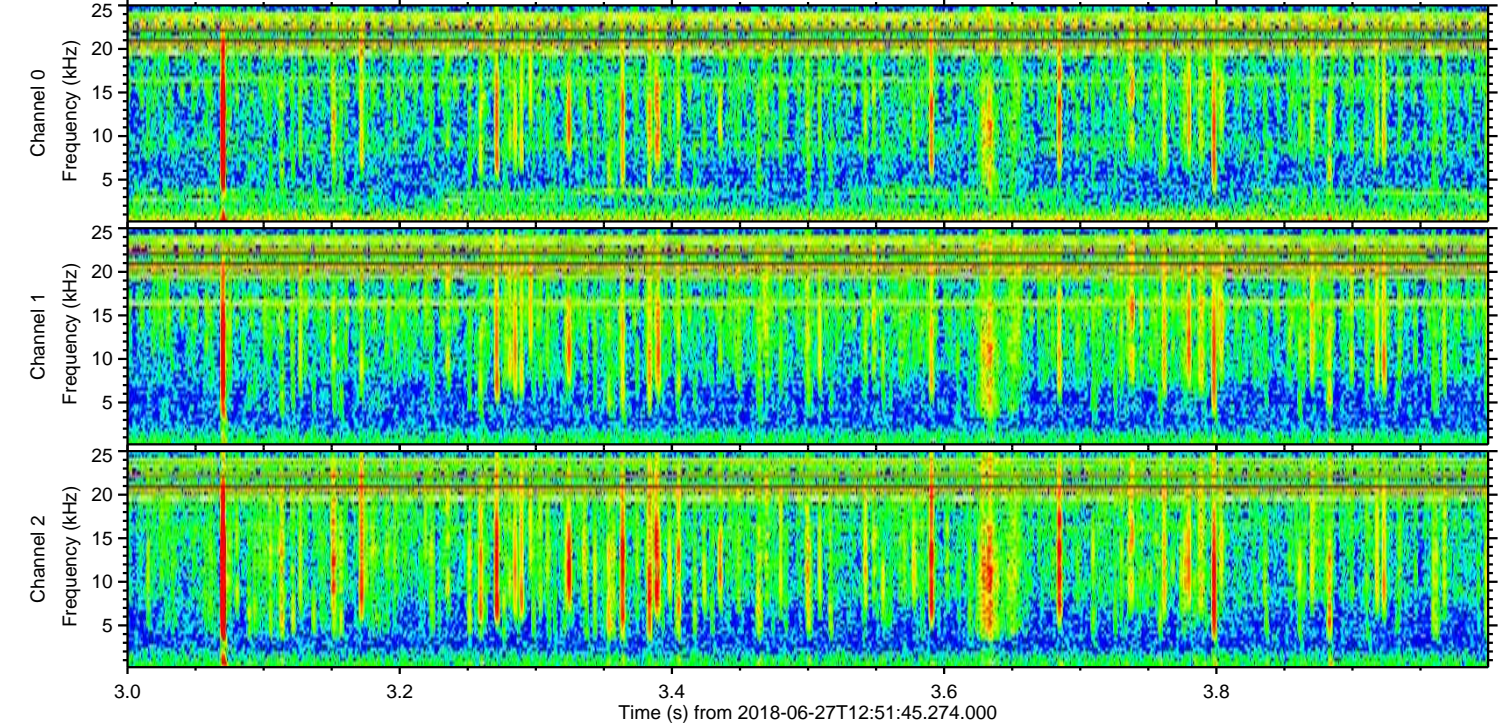
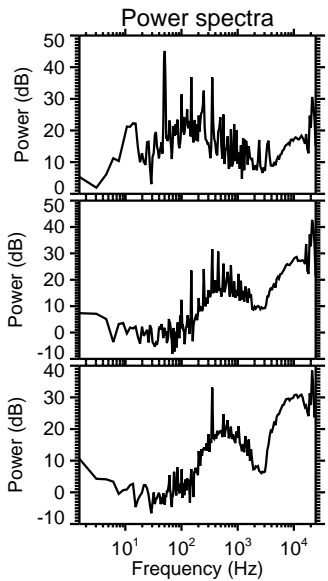
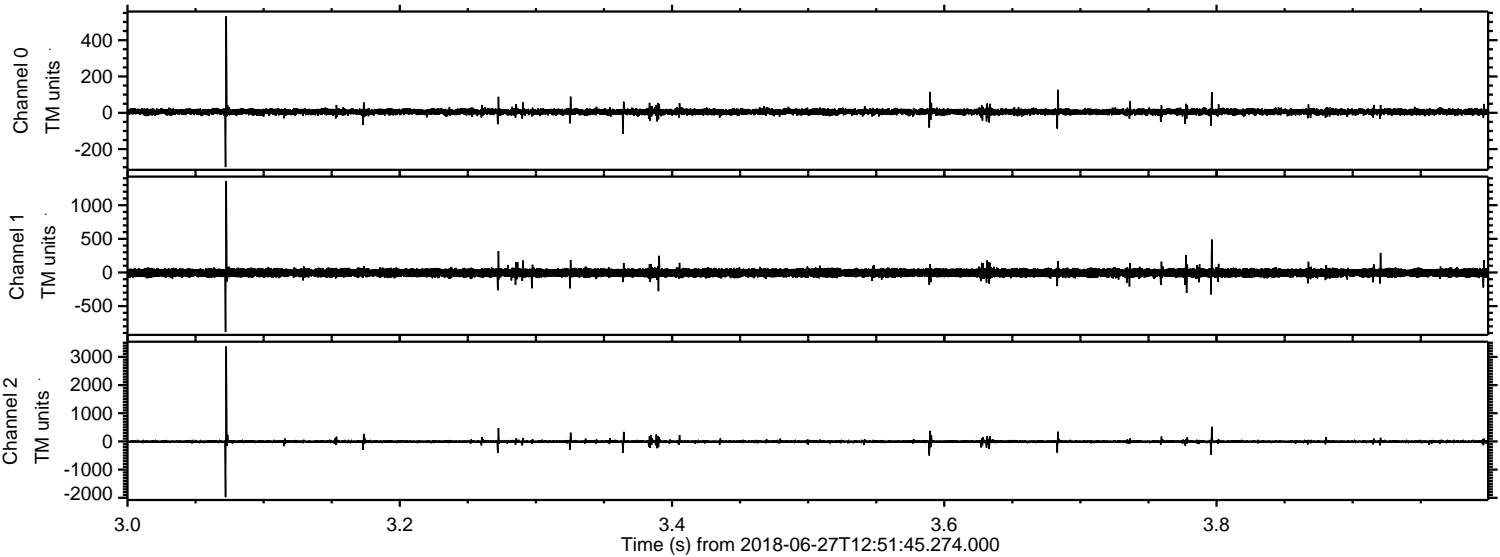
Processed Wed Jun 27 14:59:48 2018 by ELM ver.2012-10-06 from 001__elm20180627_125144__dat00.bin



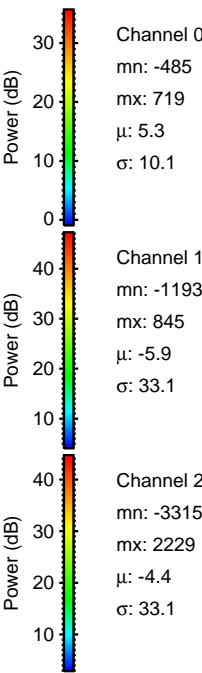
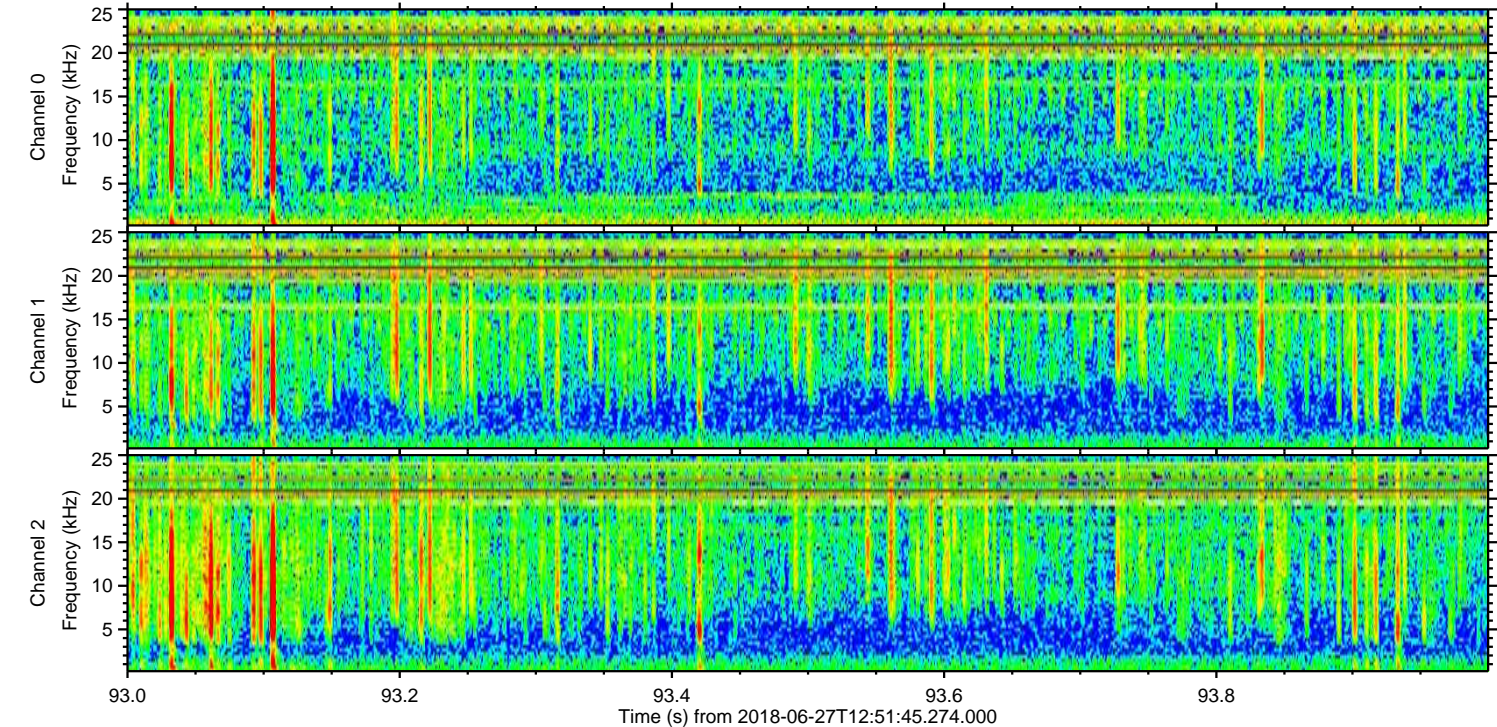
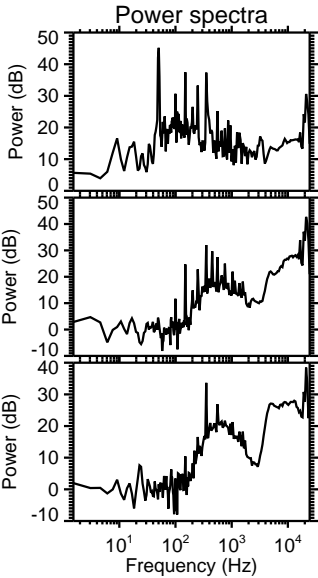
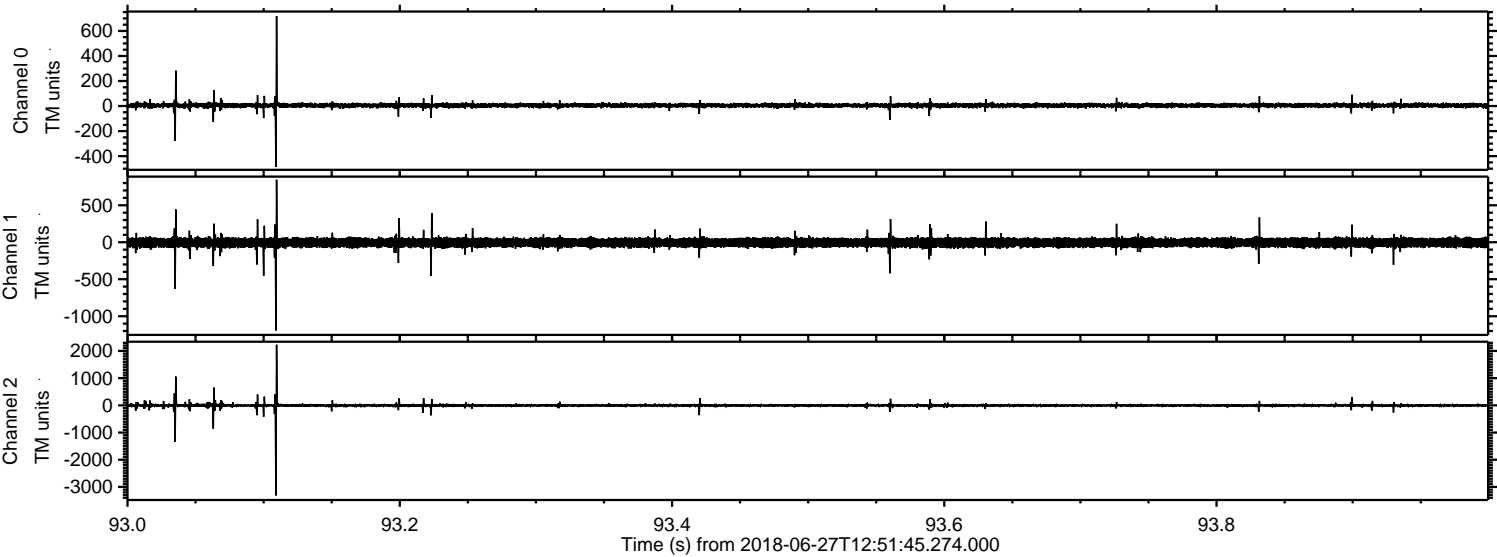
Processed Wed Jun 27 14:59:49 2018 by ELM ver.2012-10-06 from 001__elm20180627_125144__dat00.bin



Processed Wed Jun 27 14:59:50 2018 by ELM ver.2012-10-06 from 001__elm20180627_125144__dat00.bin

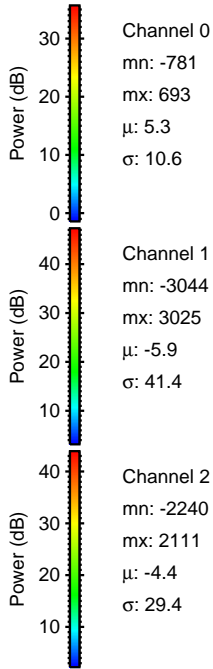
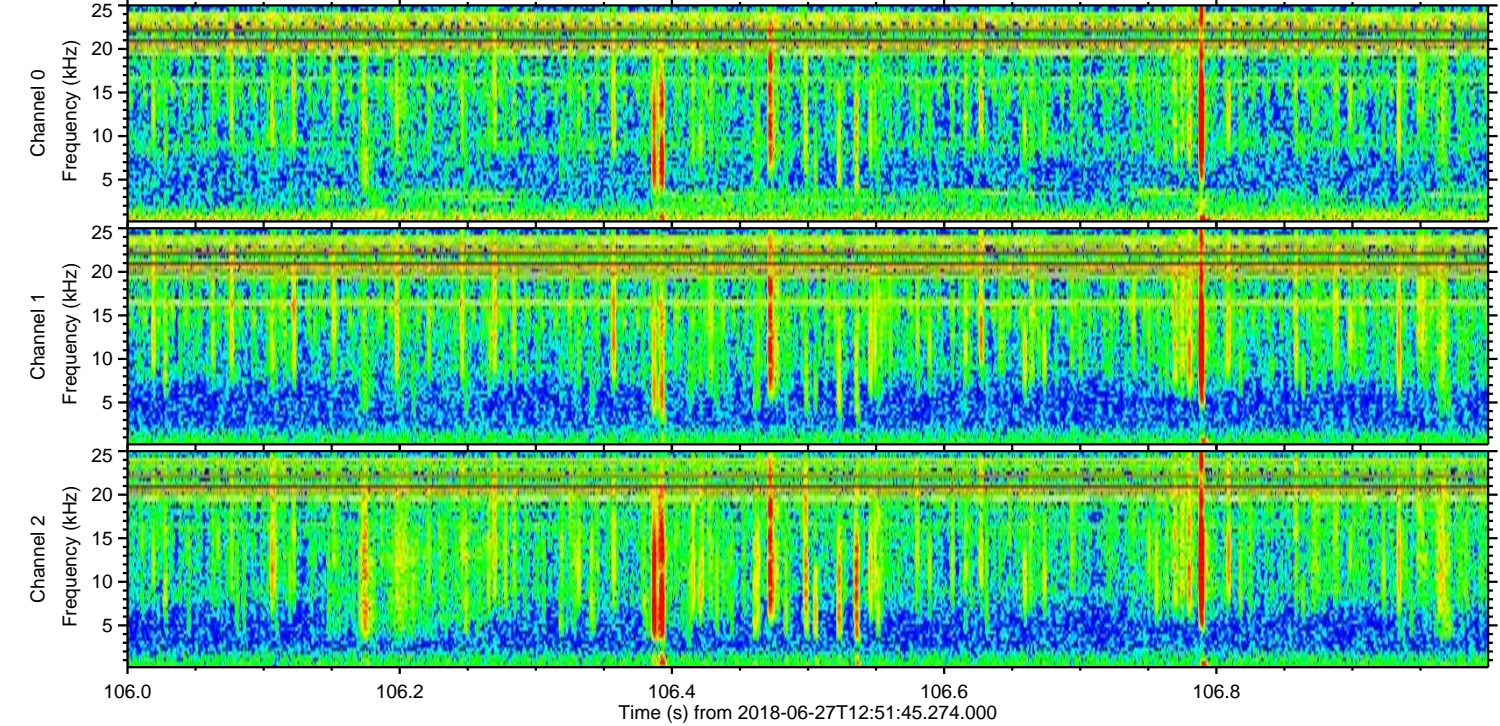
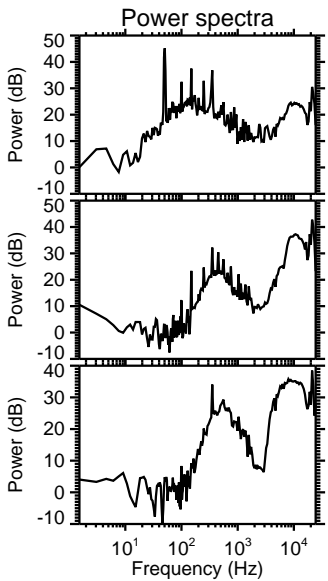
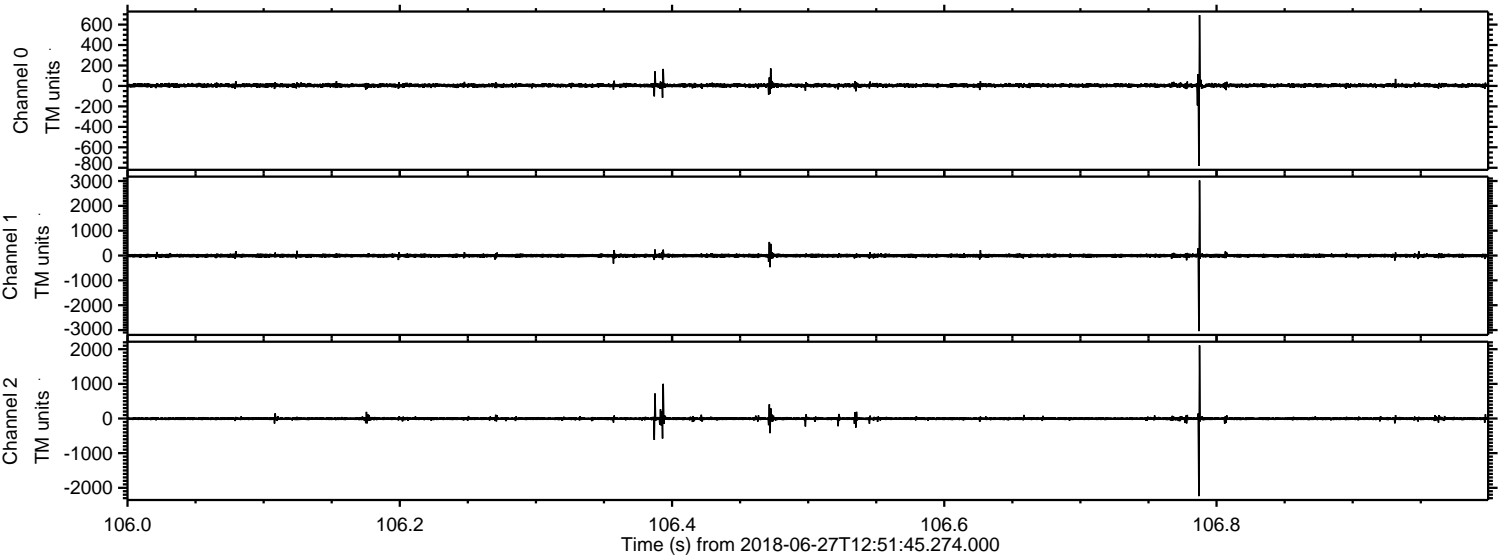


Processed Wed Jun 27 14:59:50 2018 by ELM ver.2012-10-06 from 001__elm20180627_125144__dat00.bin



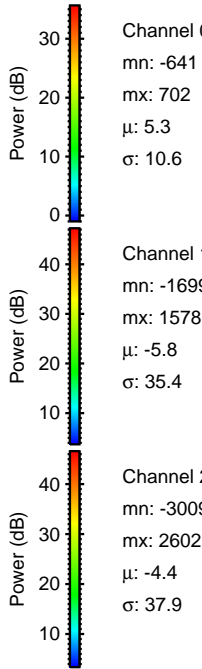
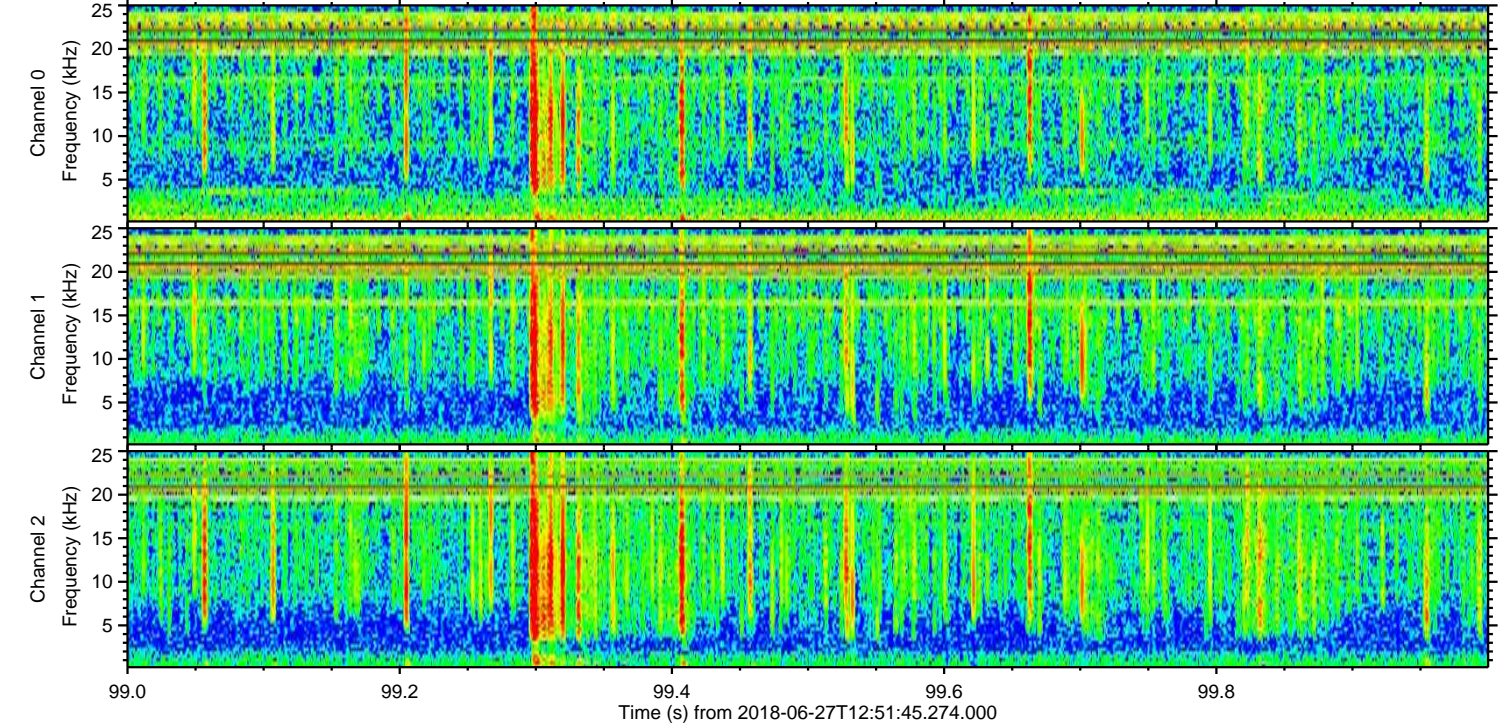
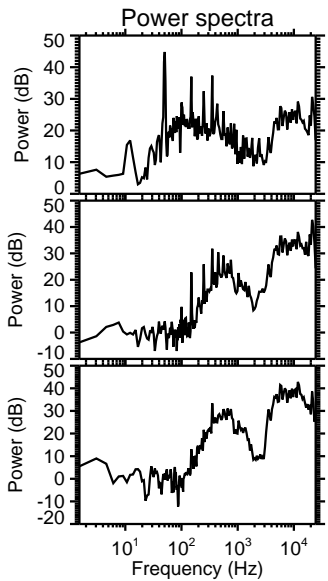
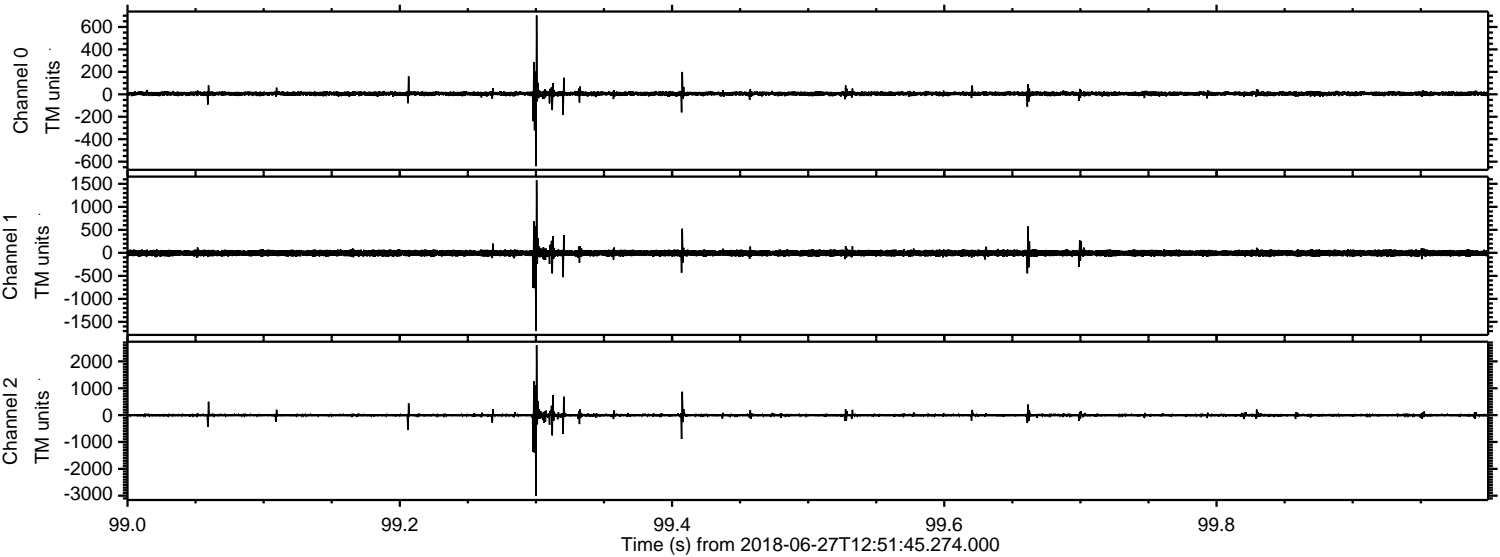
ELMAVAN 3D WAVEFORMS (Measured data sampled at 50 kHz) 51000 packets of 144 samples from 2018-06-27T12:51:45.274.000. Part 107/147

Processed Wed Jun 27 14:59:51 2018 by ELM ver.2012-10-06 from 001__elm20180627_125144__dat00.bin



ELMAVAN 3D WAVEFORMS (Measured data sampled at 50 kHz) 51000 packets of 144 samples from 2018-06-27T12:51:45.274.000. Part 100/147

Processed Wed Jun 27 14:59:52 2018 by ELM ver.2012-10-06 from 001__elm20180627_125144__dat00.bin

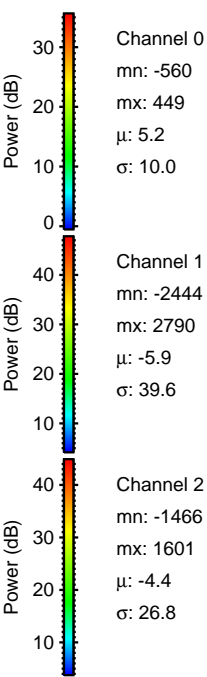
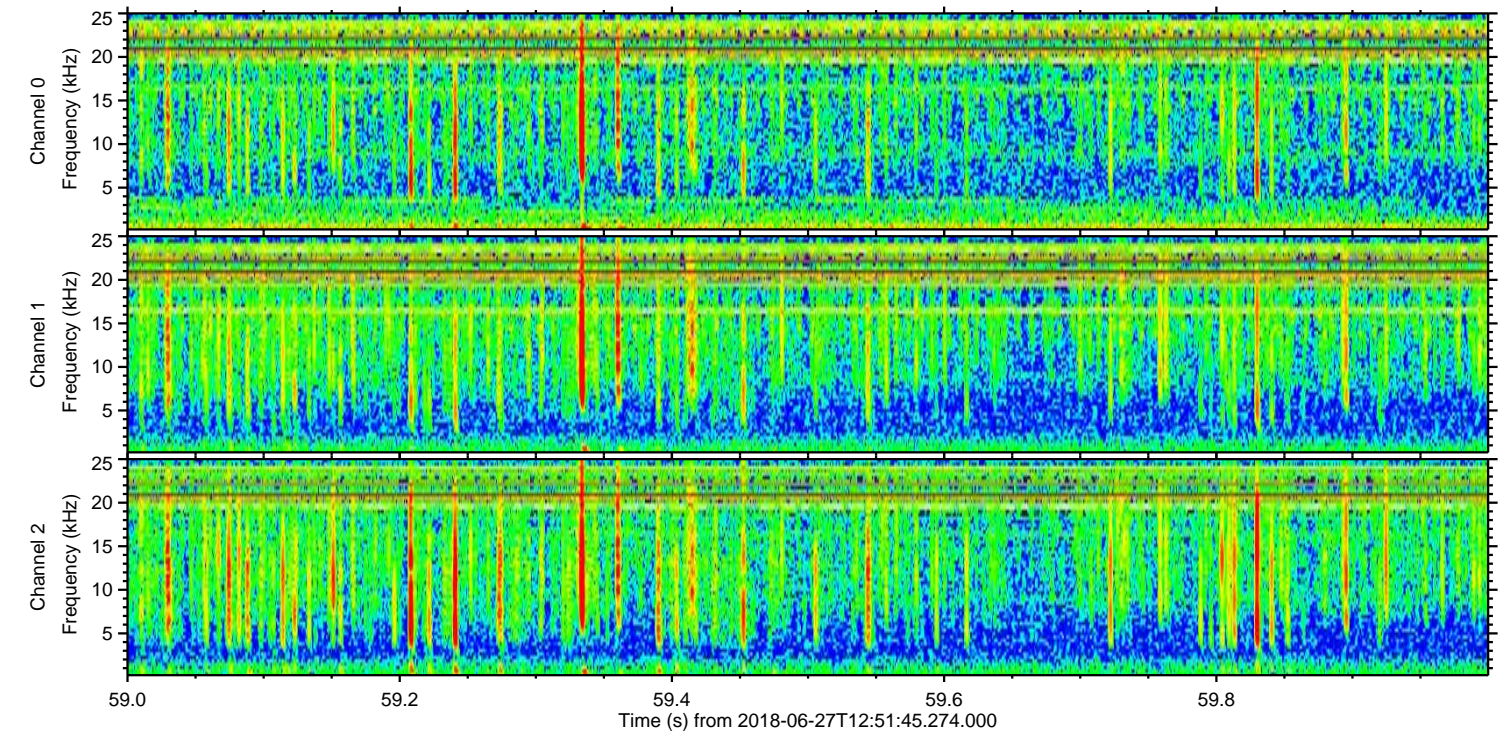
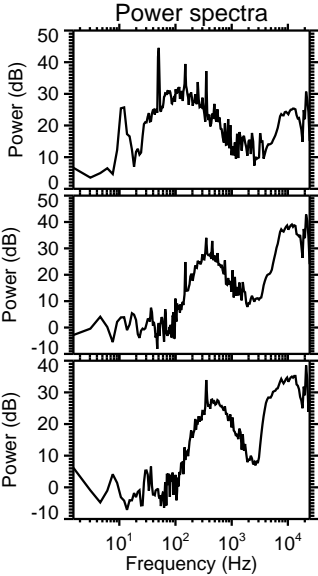
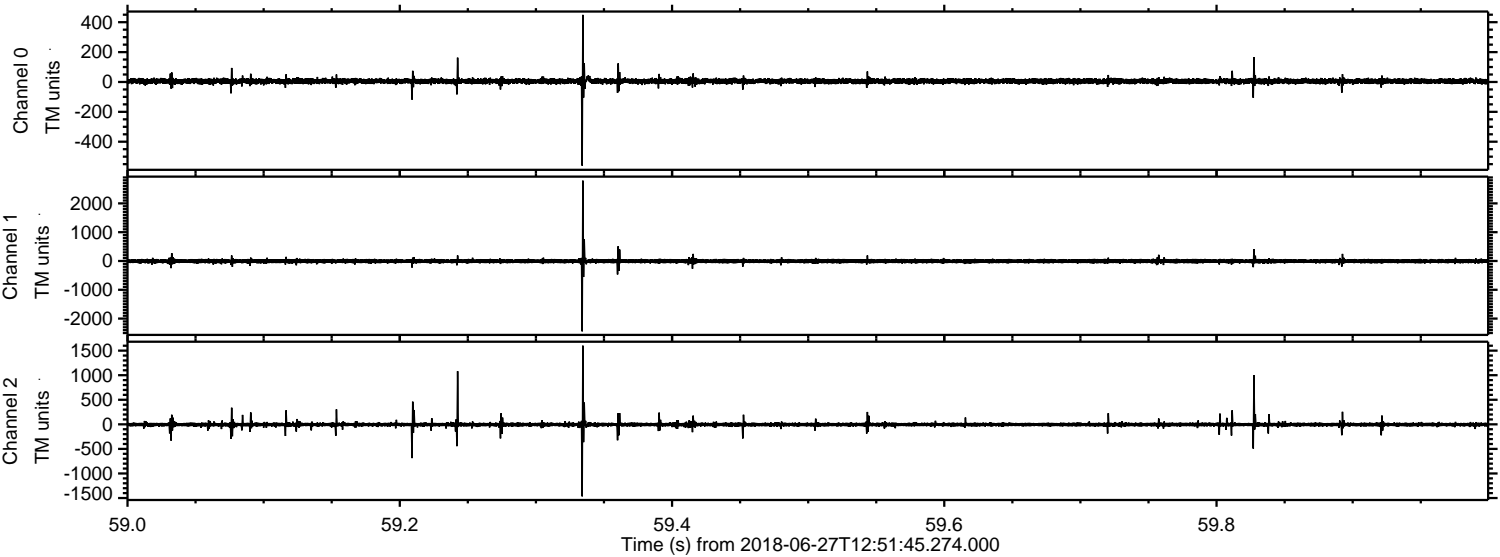


Channel 0
mn: -641
mx: 702
 μ : 5.3
 σ : 10.6

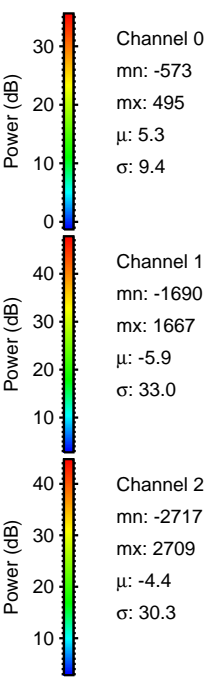
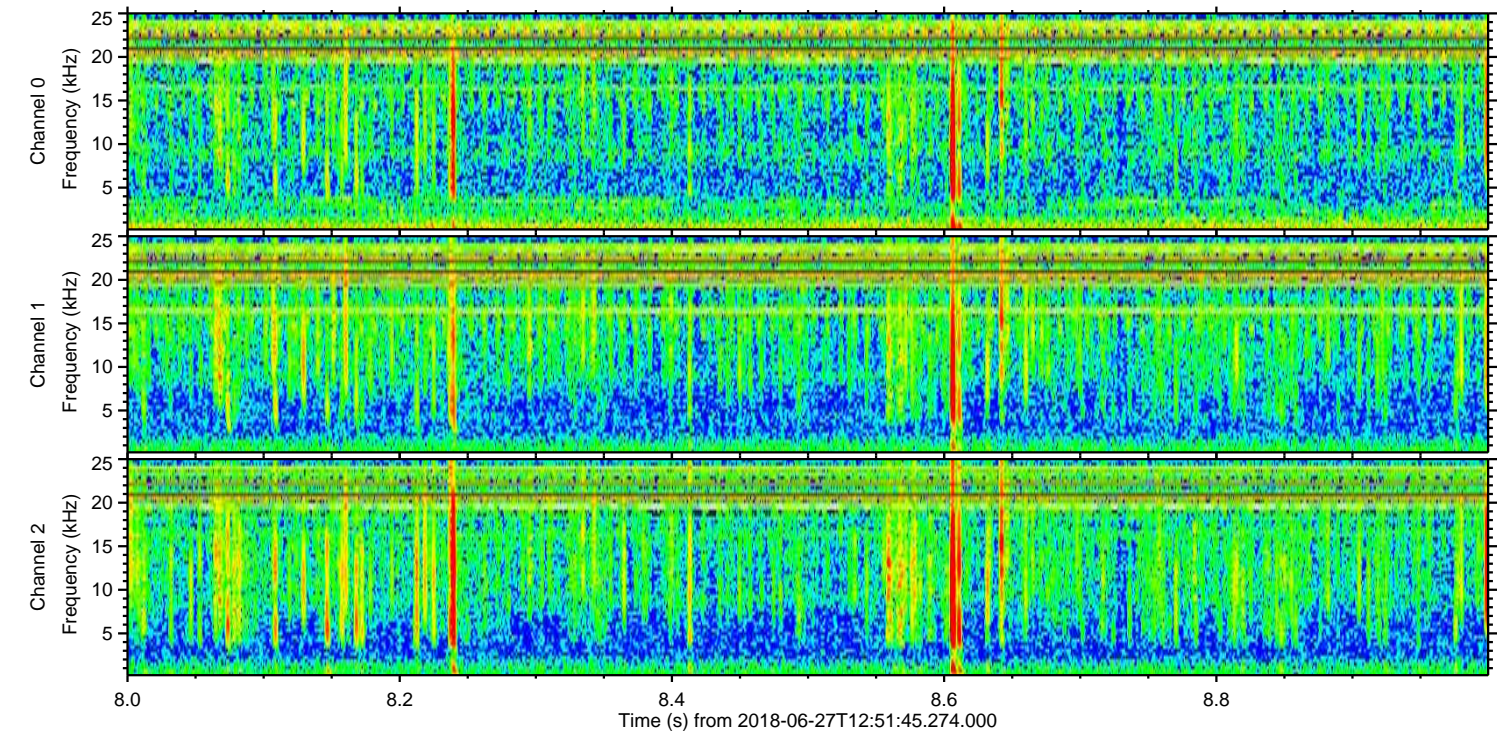
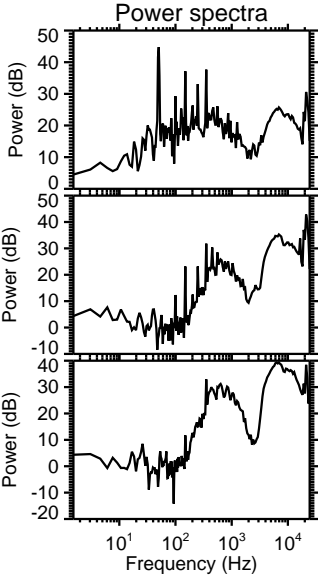
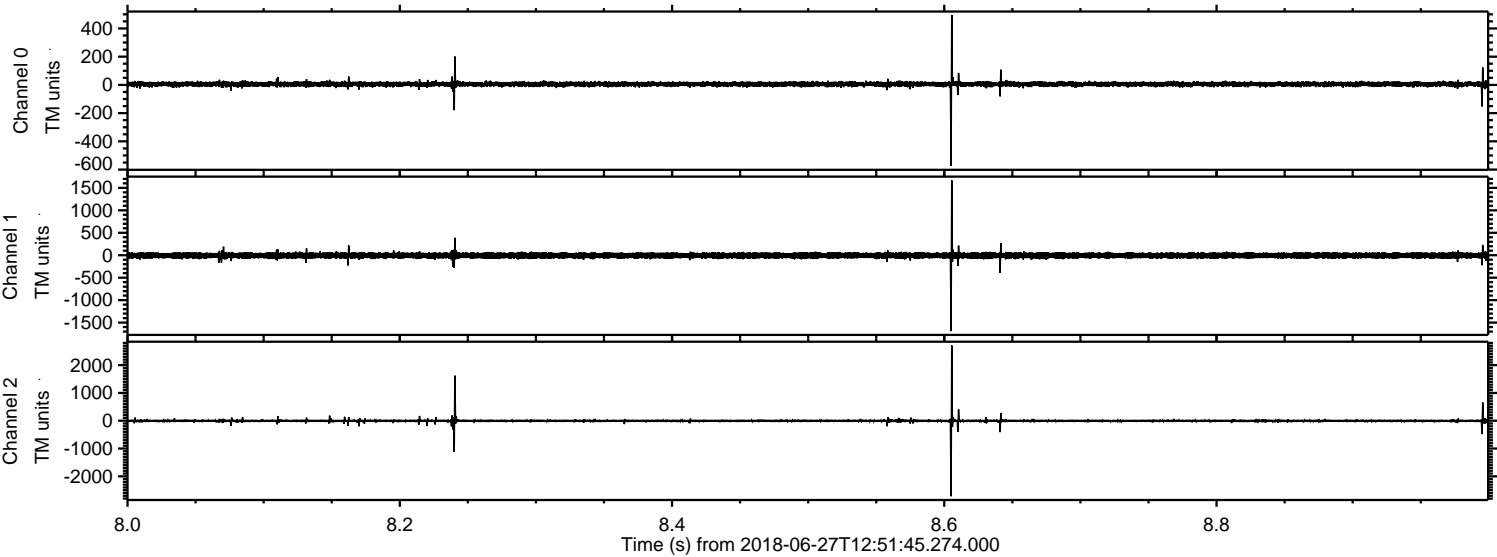
Channel 1
mn: -1699
mx: 1578
 μ : -5.8
 σ : 35.4

Channel 2
mn: -3009
mx: 2602
 μ : -4.4
 σ : 37.9

Processed Wed Jun 27 14:59:52 2018 by ELM ver.2012-10-06 from 001__elm20180627_125144__dat00.bin



Processed Wed Jun 27 14:59:53 2018 by ELM ver.2012-10-06 from 001__elm20180627_125144__dat00.bin



Processed Wed Jun 27 14:59:54 2018 by ELM ver.2012-10-06 from 001__elm20180627_125144__dat00.bin

