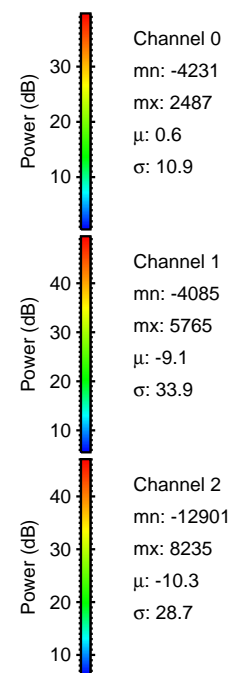
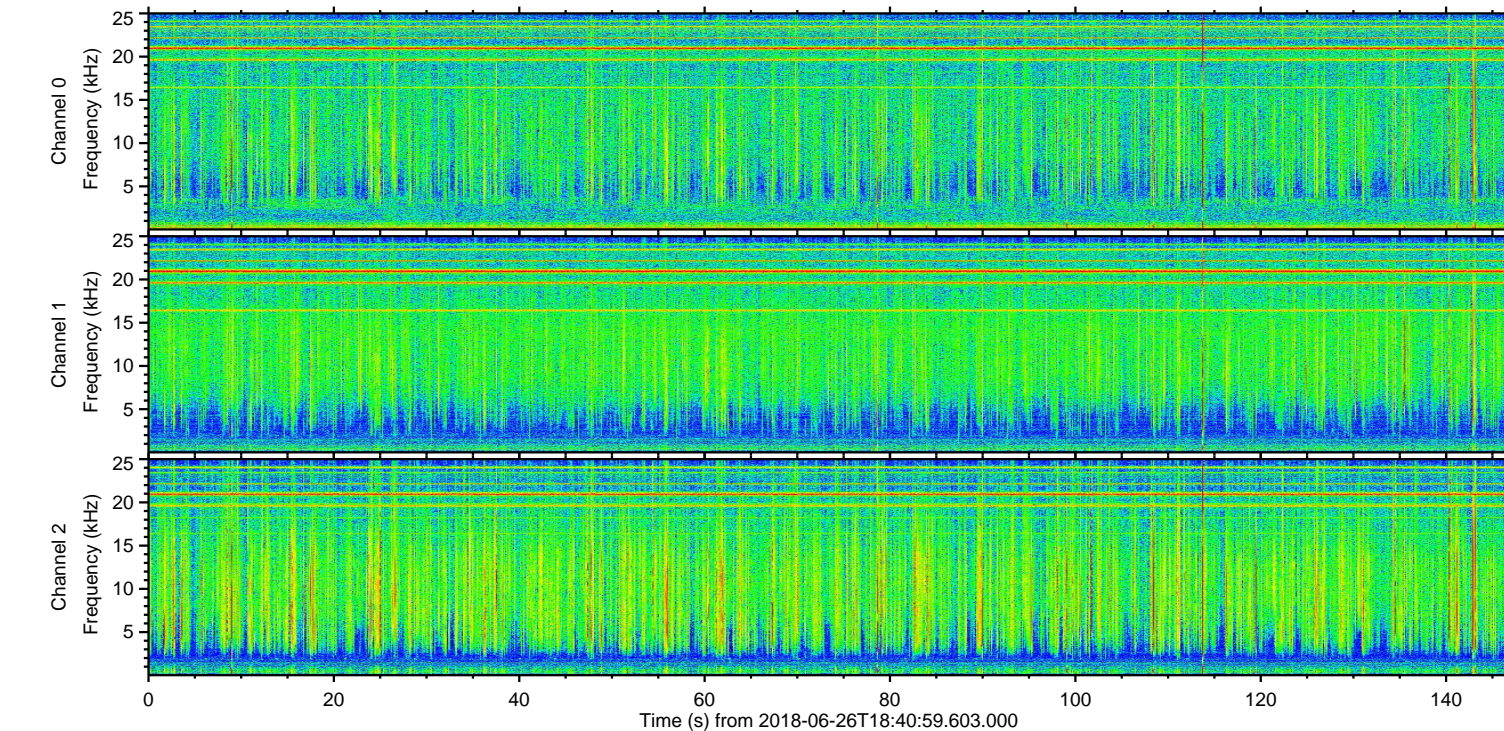
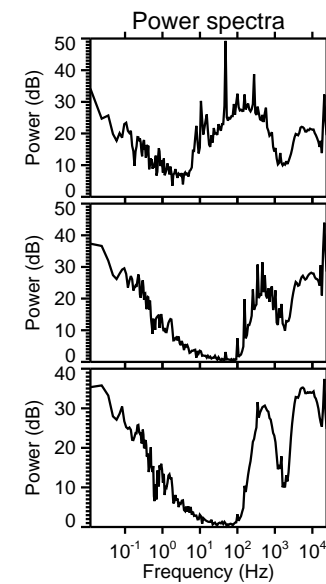
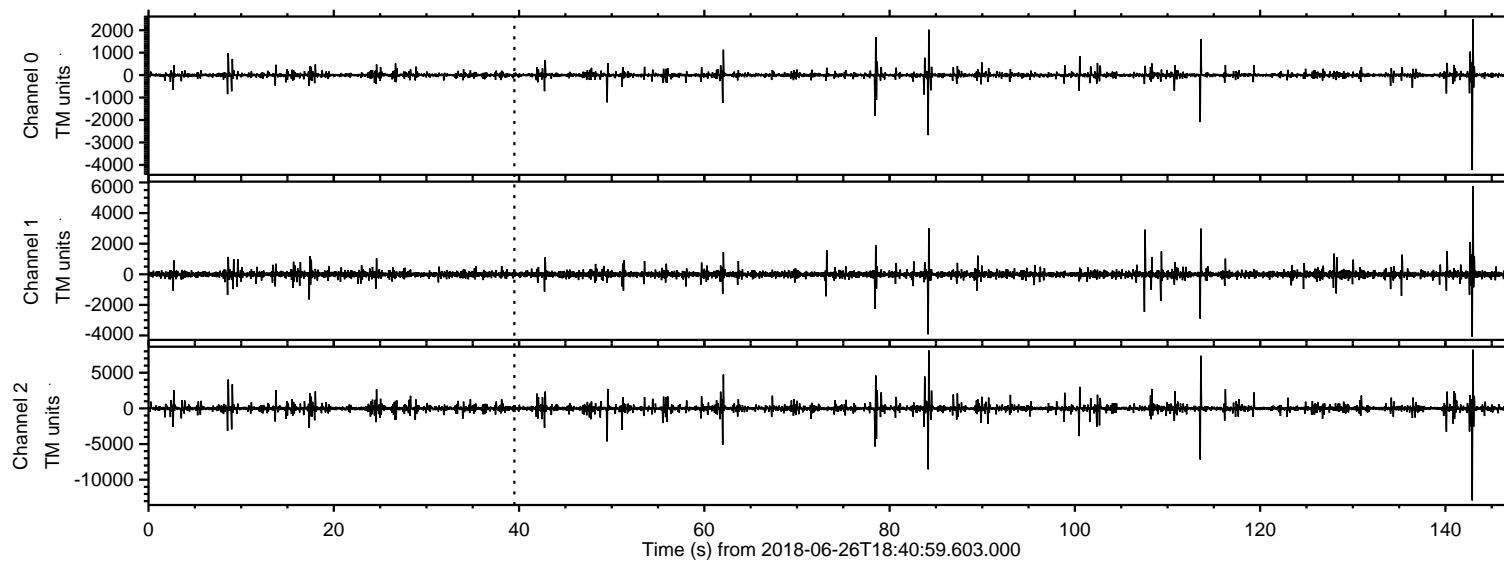


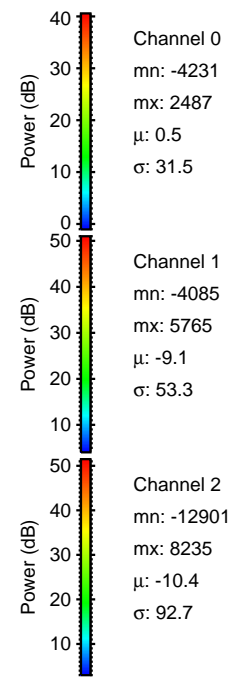
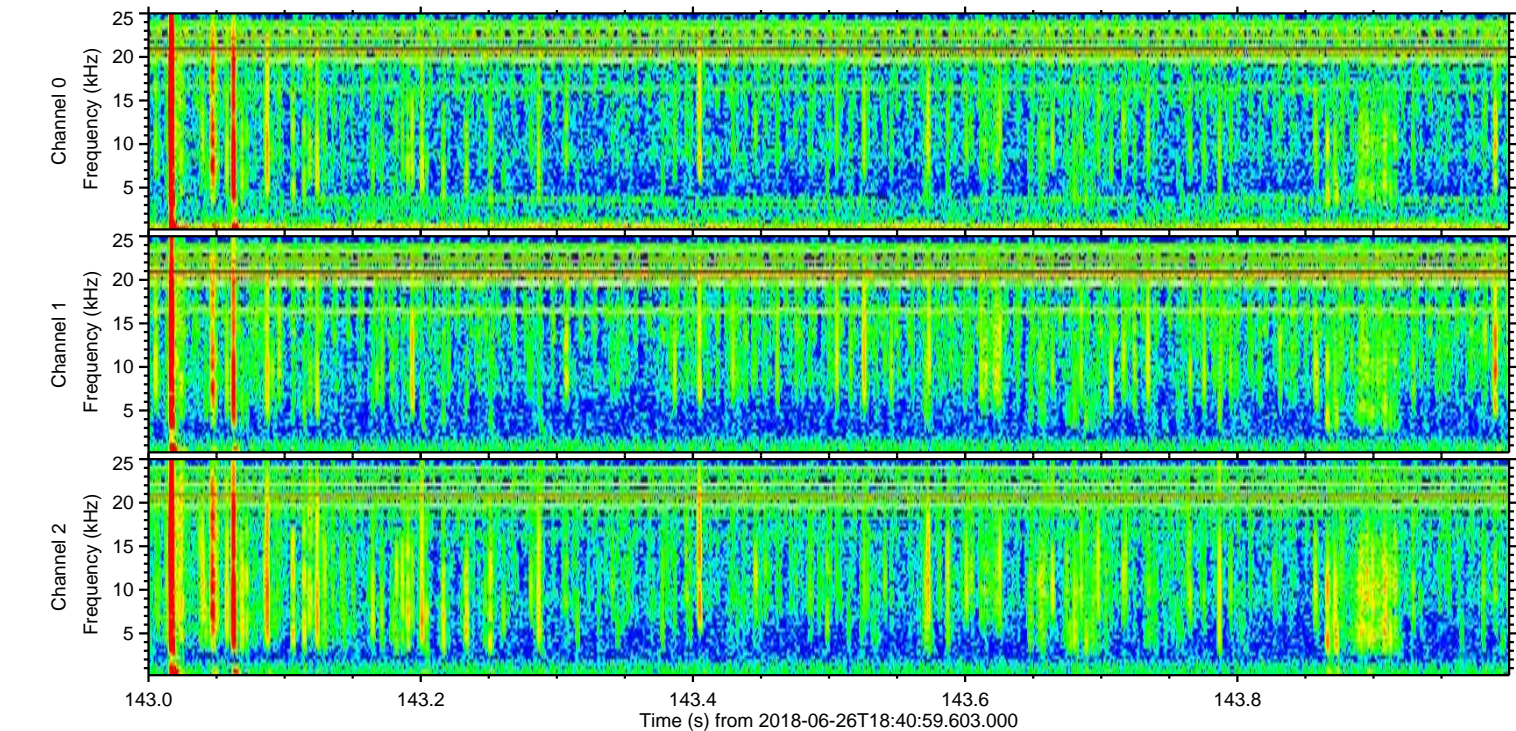
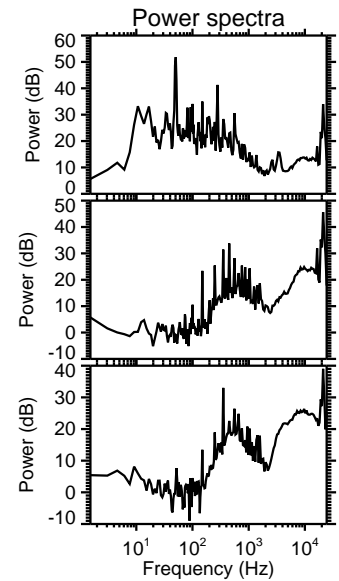
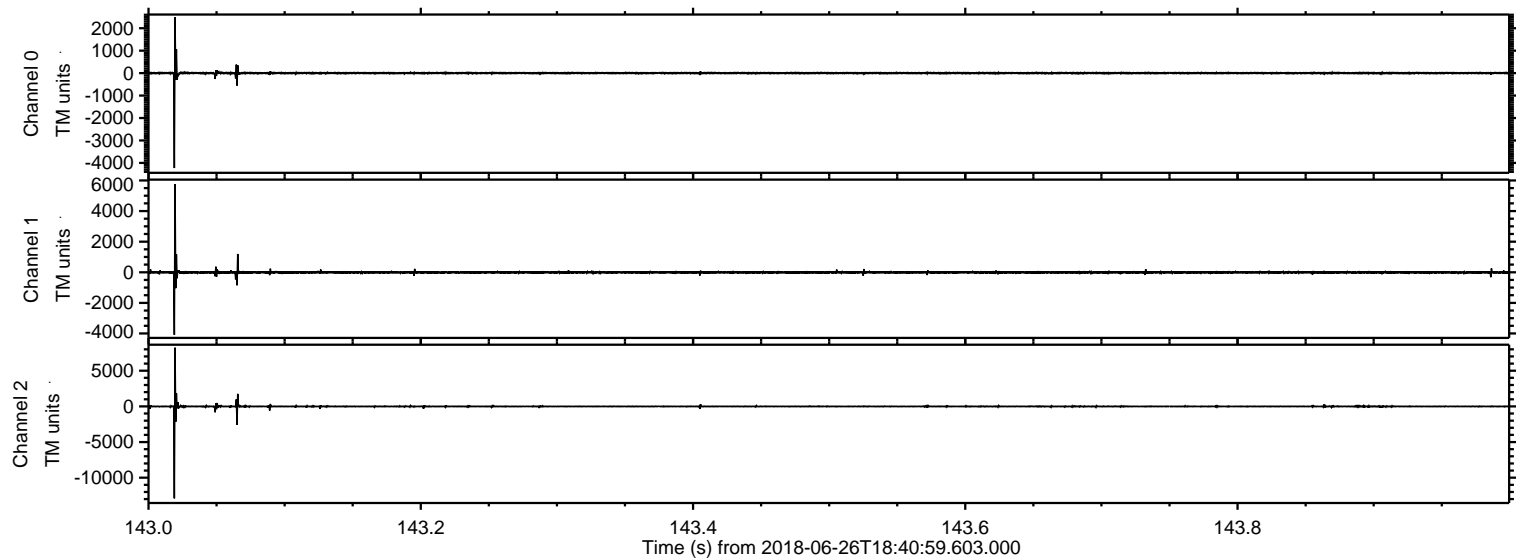
ELMAVAN 3D WAVEFORMS (Measured data sampled at 50 kHz) 50999 packets of 144 samples from 2018-06-26T18:40:59.603.000.

Processed Tue Jun 26 20:49:17 2018 by ELM ver.2012-10-06 from 001__elm20180626_184058__dat00.bin

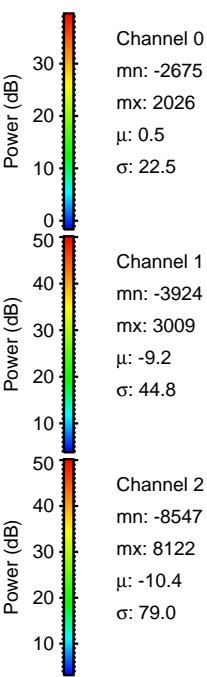
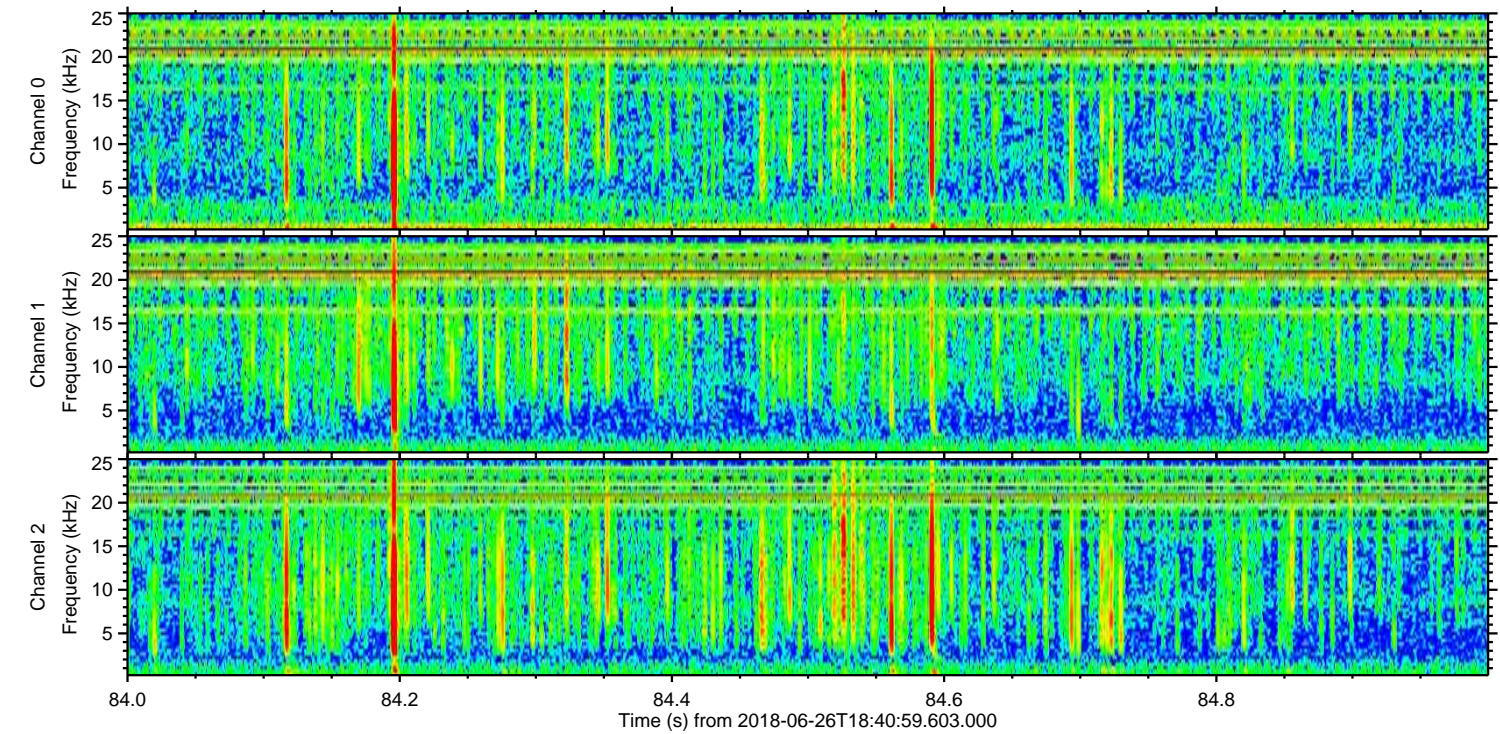
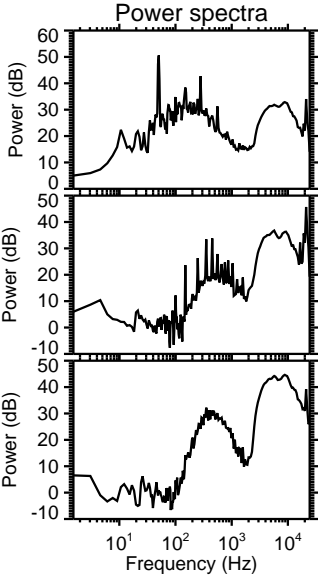
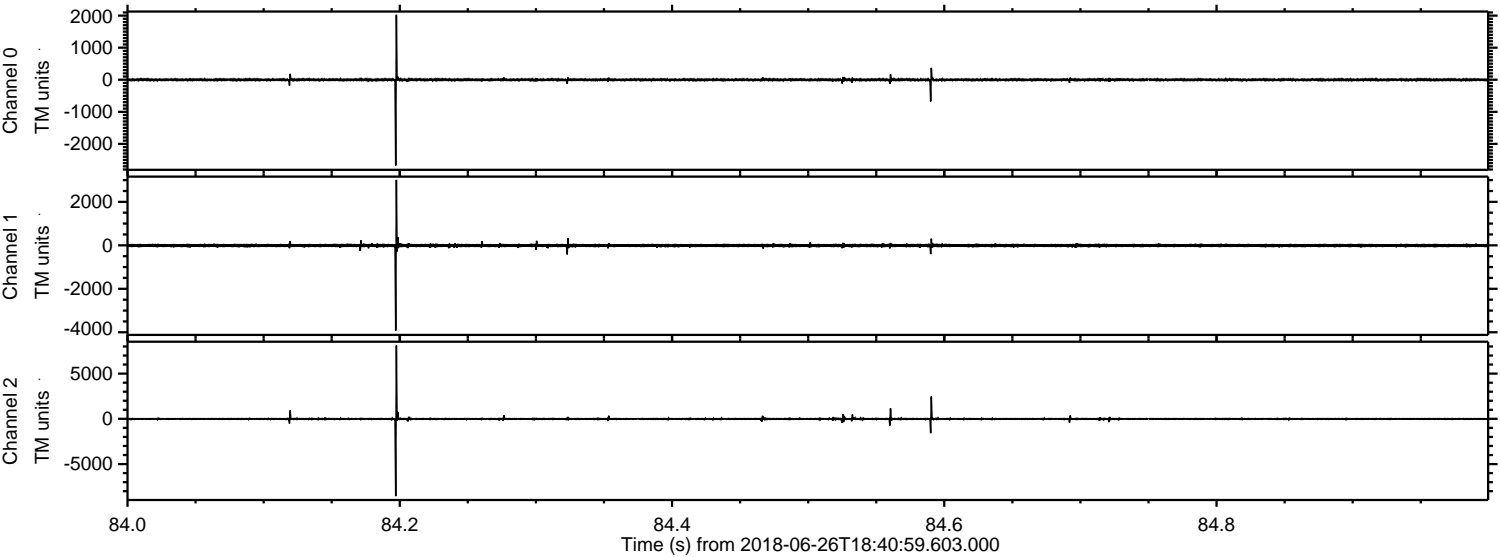


ELMAVAN 3D WAVEFORMS (Measured data sampled at 50 kHz) 50999 packets of 144 samples from 2018-06-26T18:40:59.603.000. Part 144/147

Processed Tue Jun 26 20:49:23 2018 by ELM ver.2012-10-06 from 001__elm20180626_184058__dat00.bin

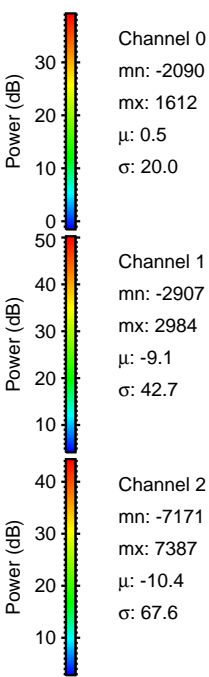
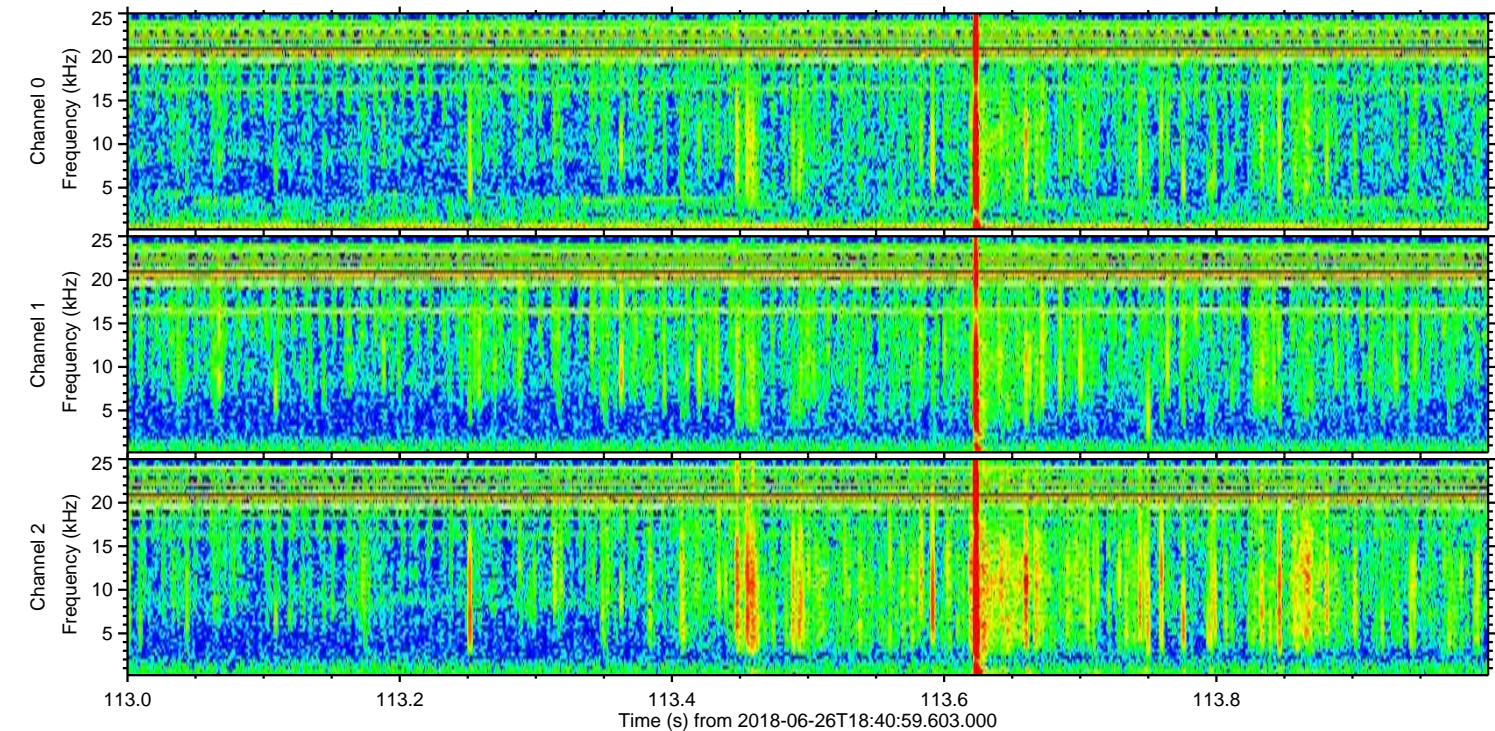
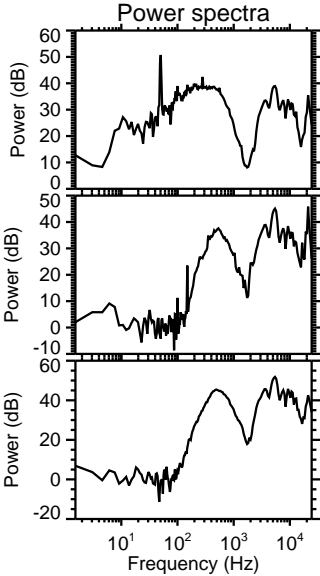
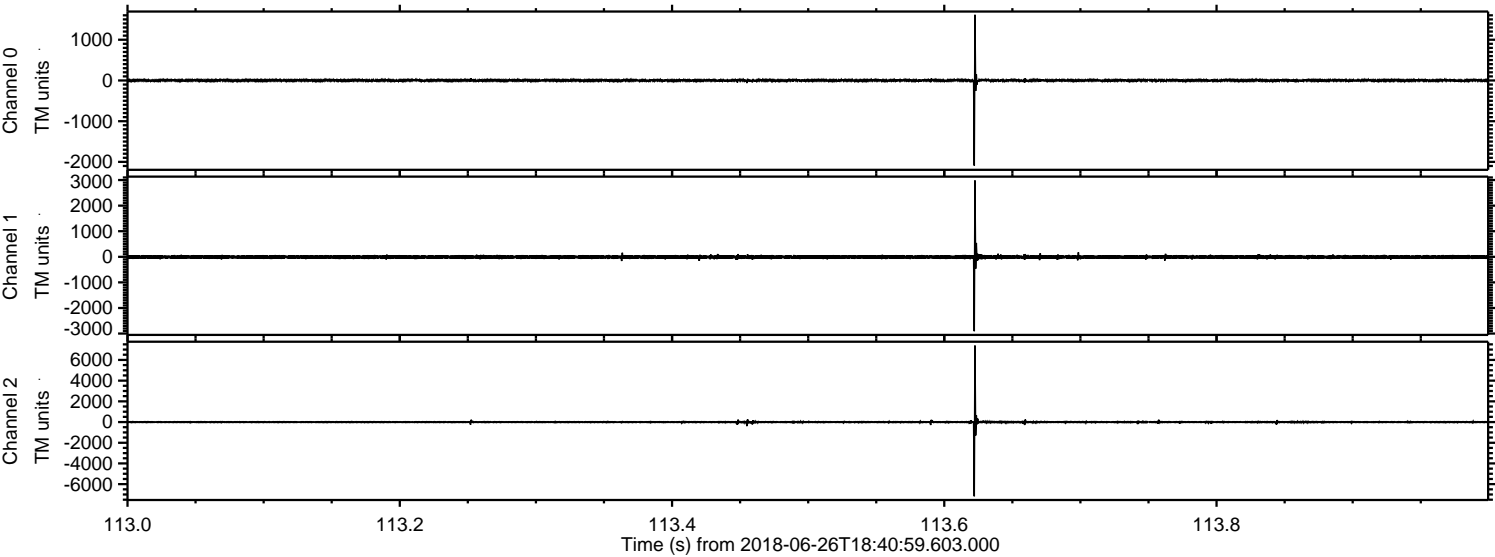


Processed Tue Jun 26 20:49:24 2018 by ELM ver.2012-10-06 from 001__elm20180626_184058__dat00.bin

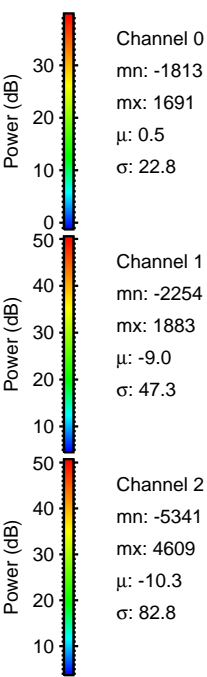
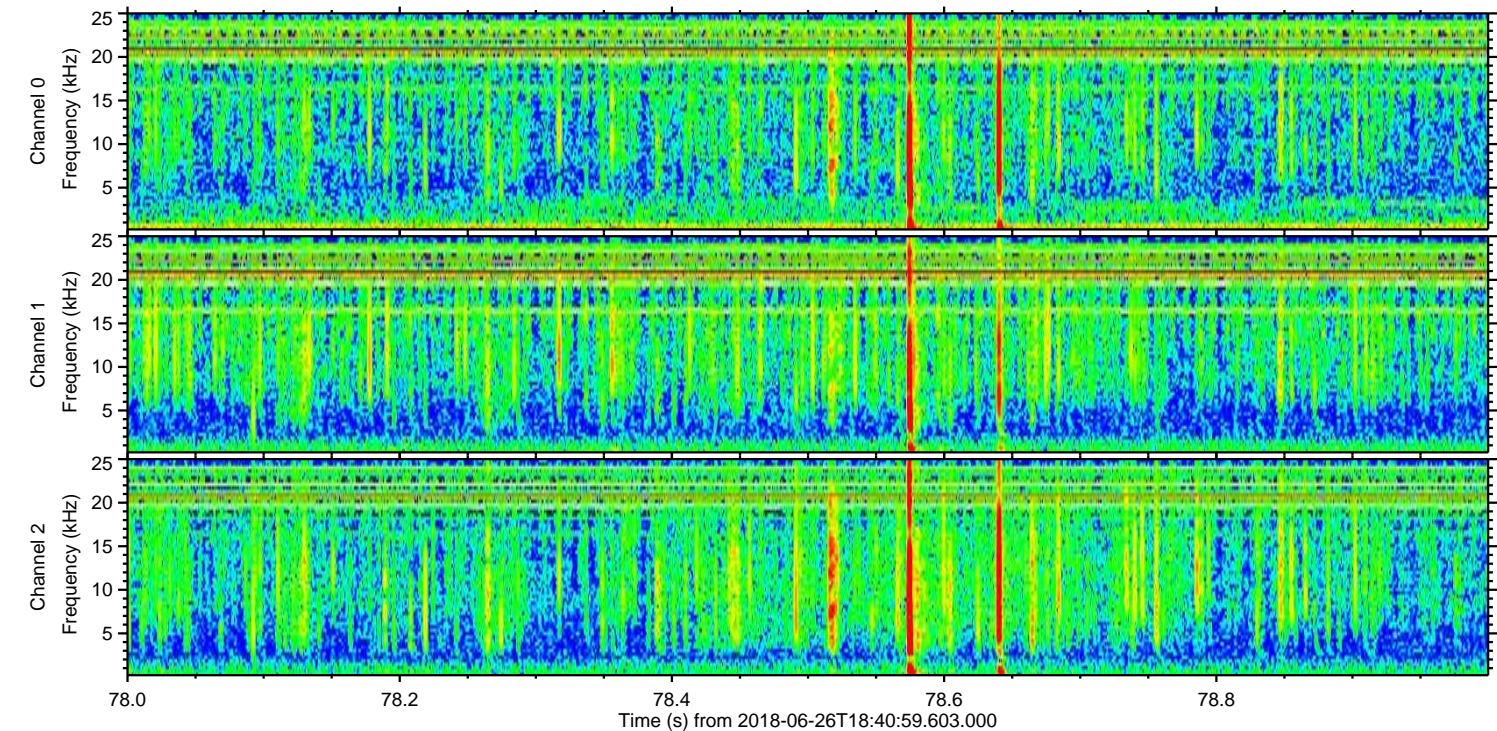
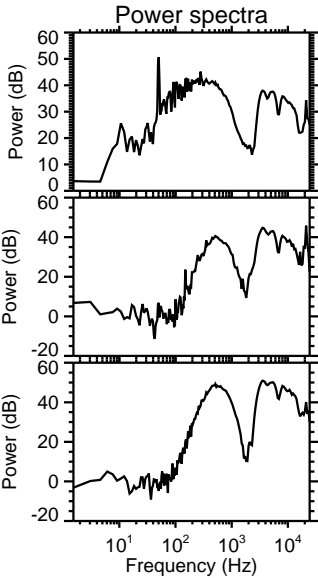
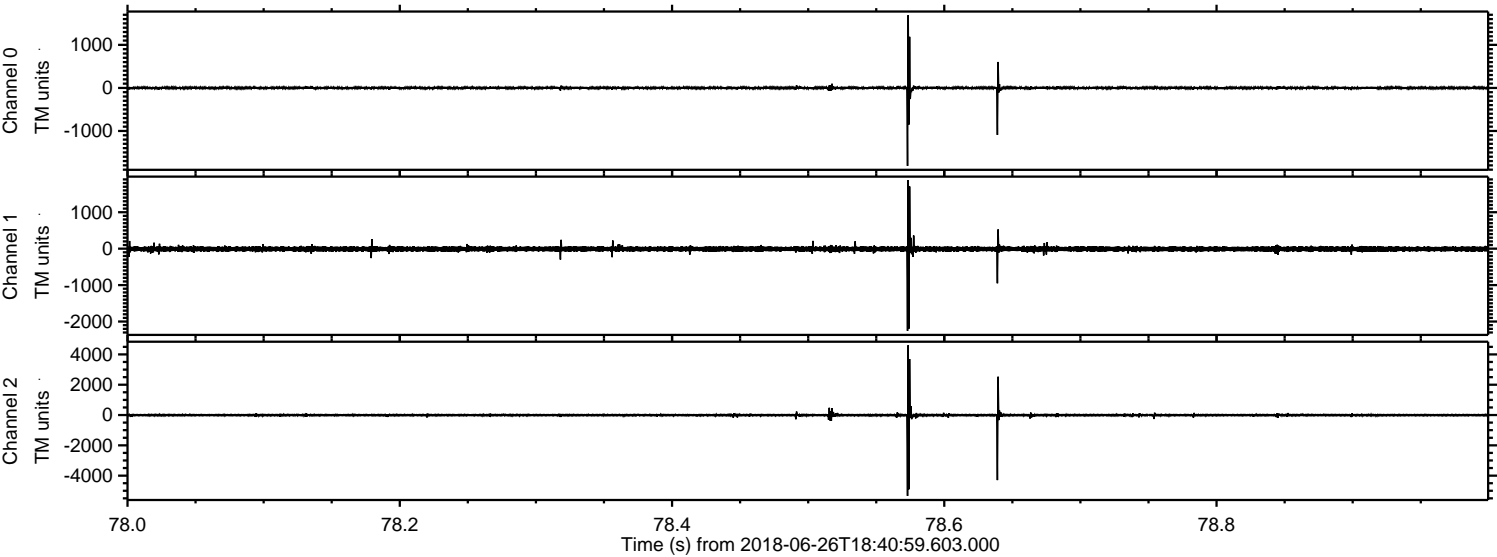


ELMAVAN 3D WAVEFORMS (Measured data sampled at 50 kHz) 50999 packets of 144 samples from 2018-06-26T18:40:59.603.000. Part 114/147

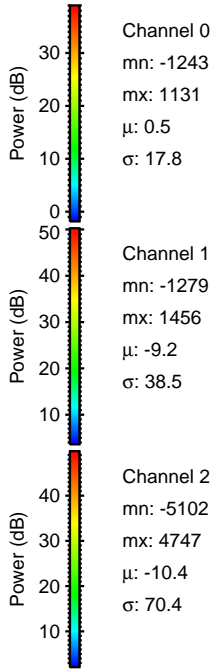
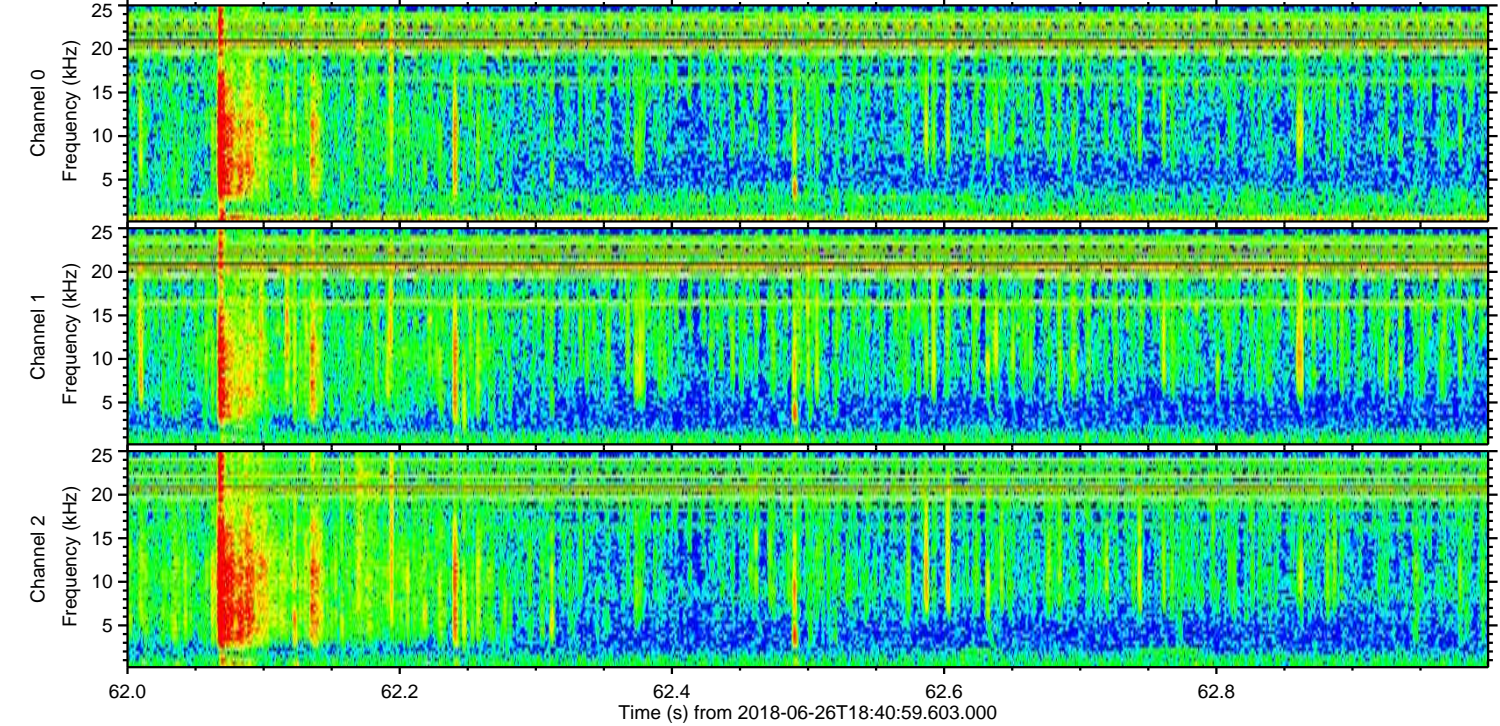
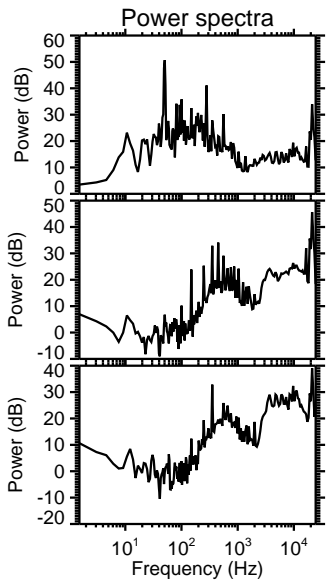
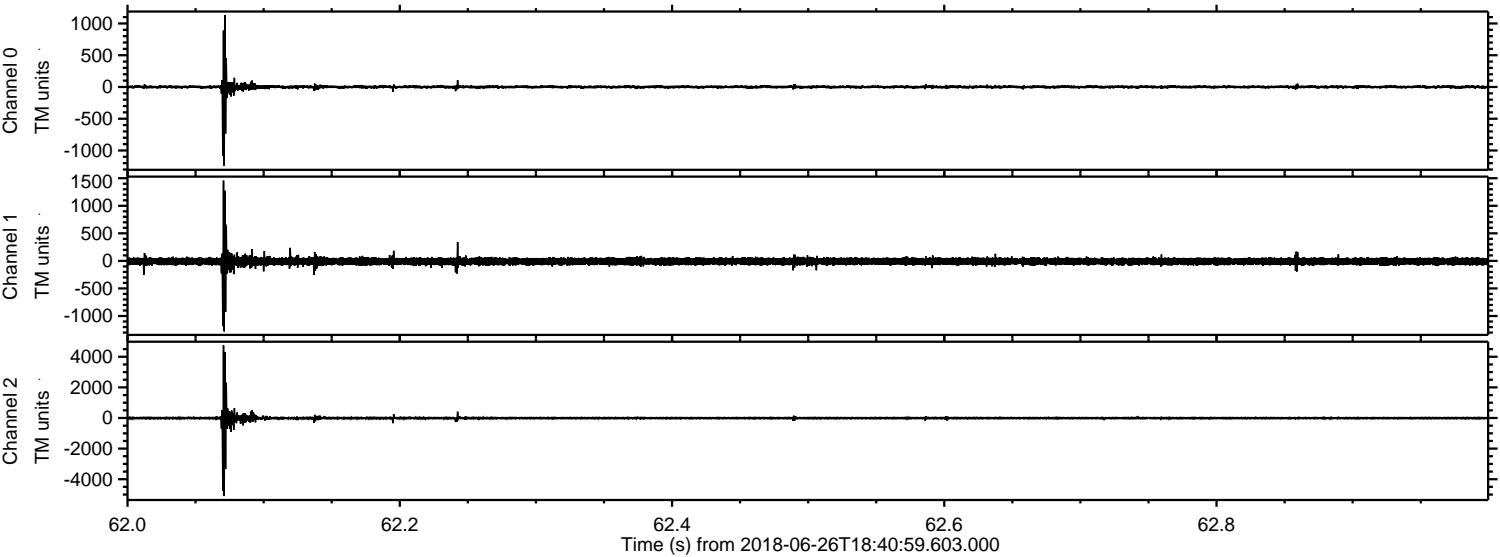
Processed Tue Jun 26 20:49:24 2018 by ELM ver.2012-10-06 from 001__elm20180626_184058__dat00.bin



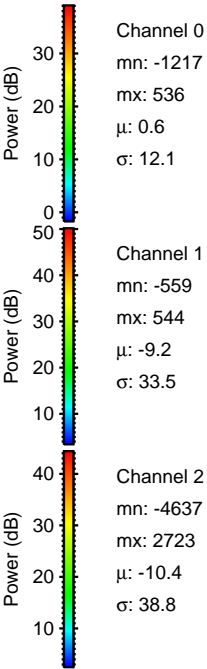
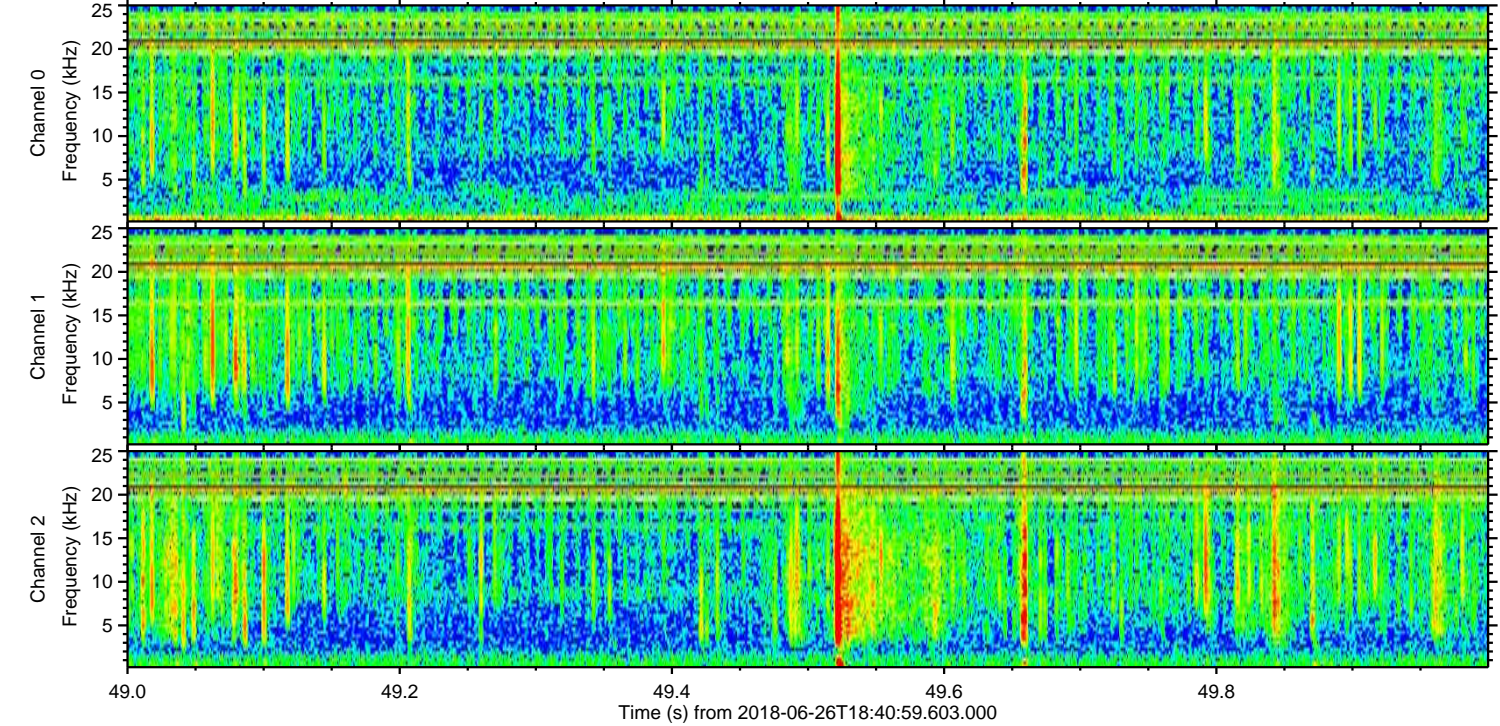
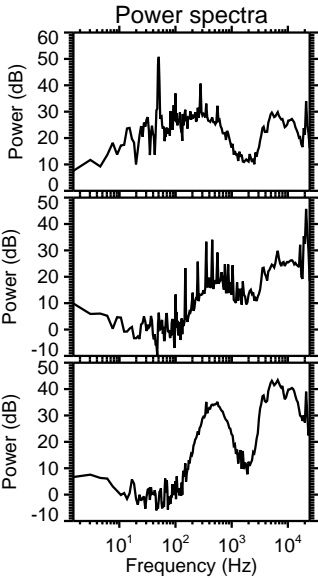
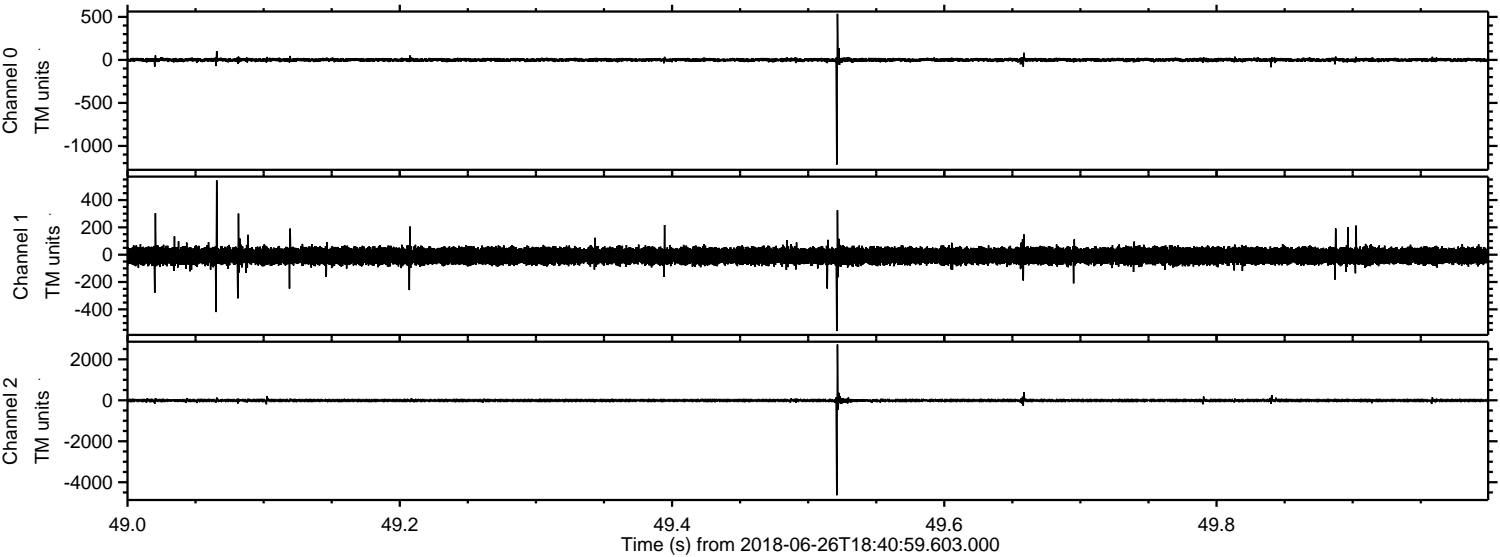
Processed Tue Jun 26 20:49:25 2018 by ELM ver.2012-10-06 from 001__elm20180626_184058__dat00.bin



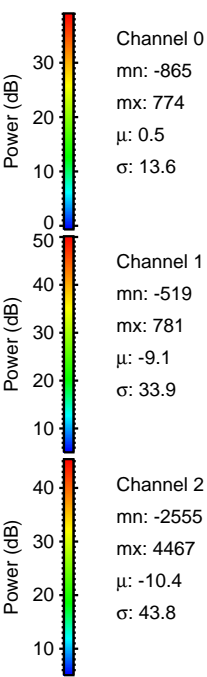
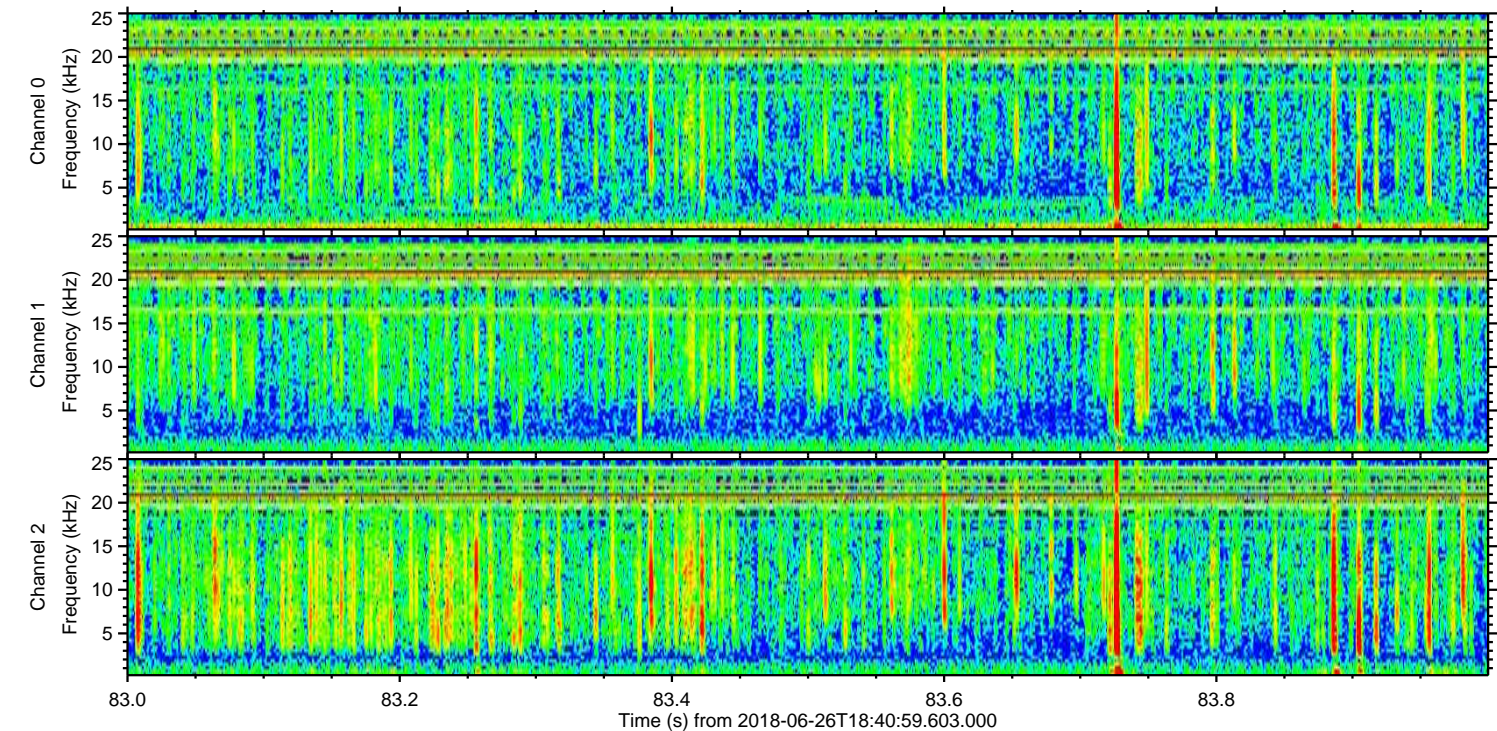
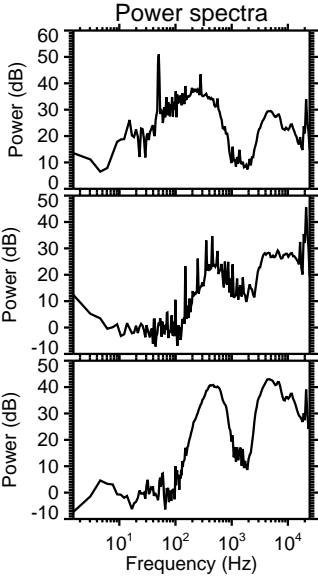
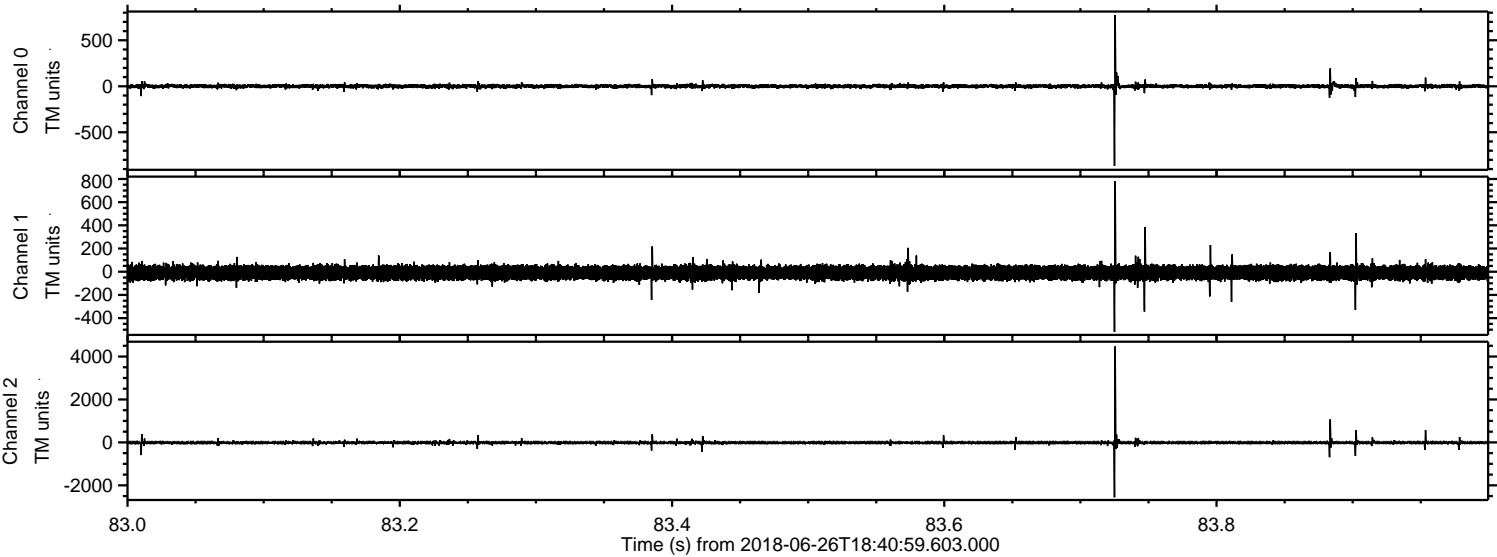
Processed Tue Jun 26 20:49:26 2018 by ELM ver.2012-10-06 from 001__elm20180626_184058__dat00.bin



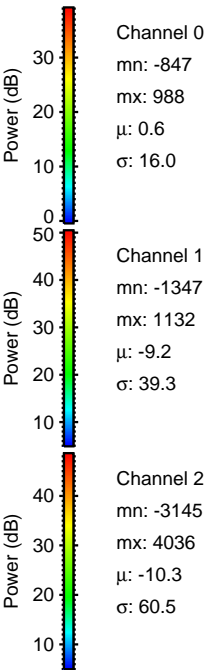
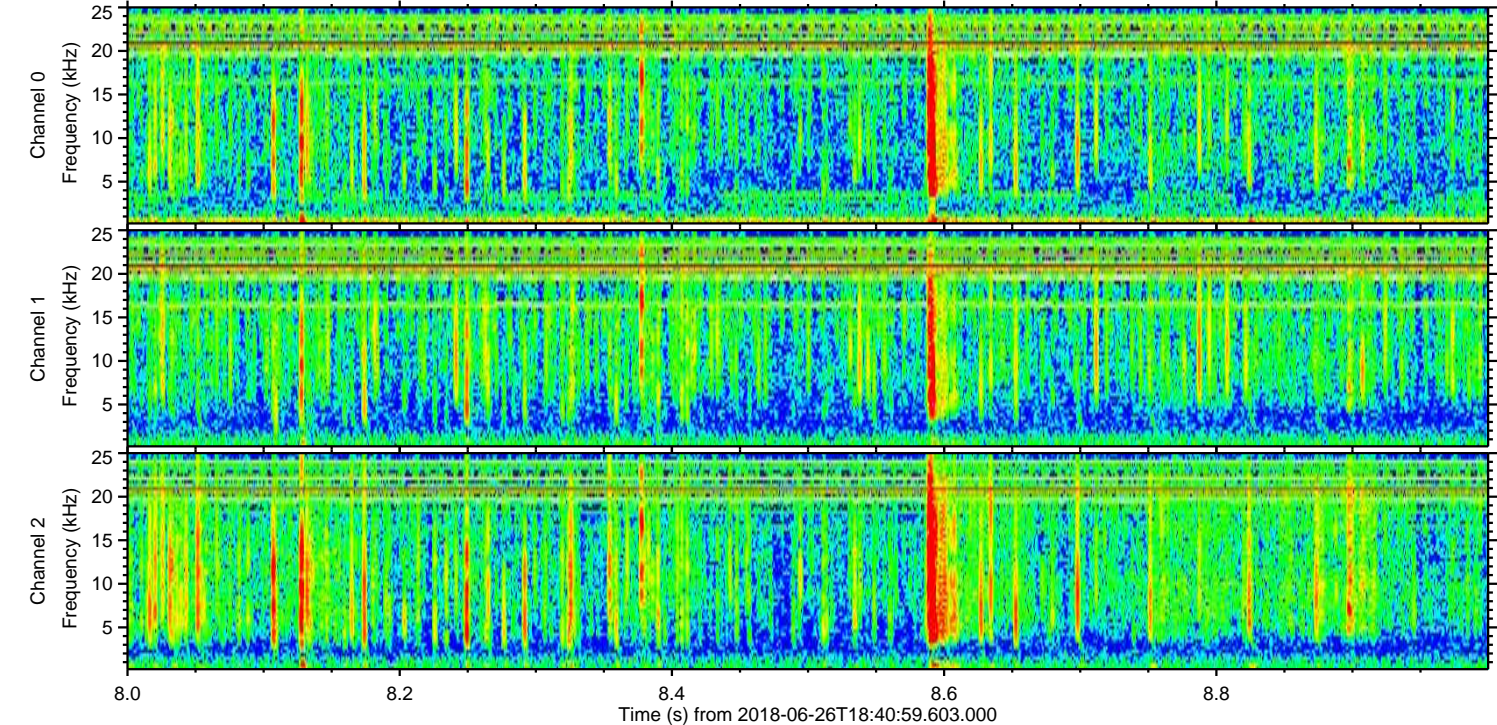
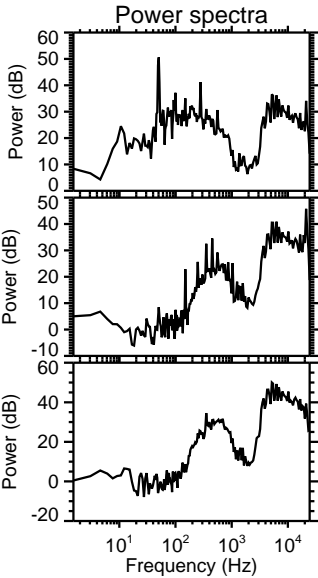
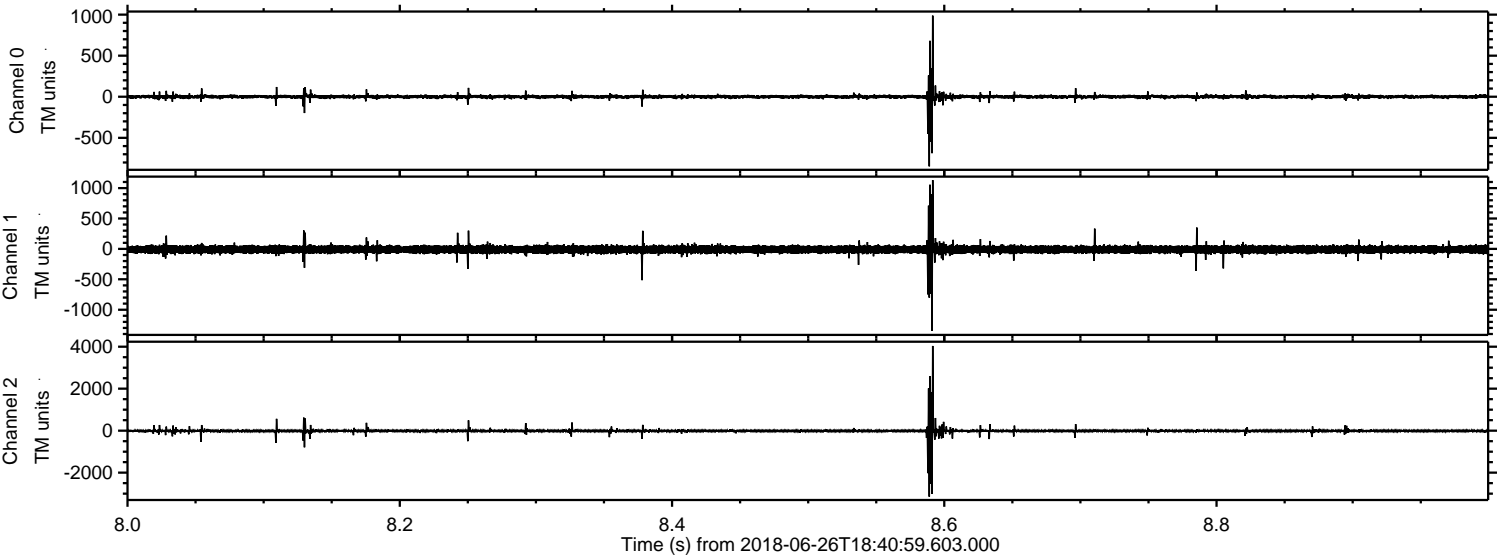
Processed Tue Jun 26 20:49:26 2018 by ELM ver.2012-10-06 from 001__elm20180626_184058__dat00.bin



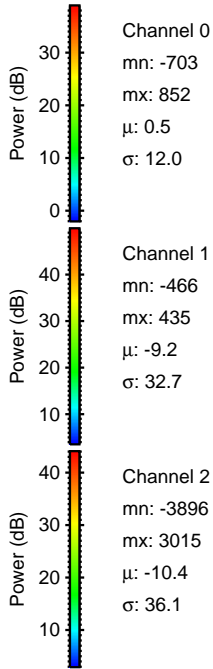
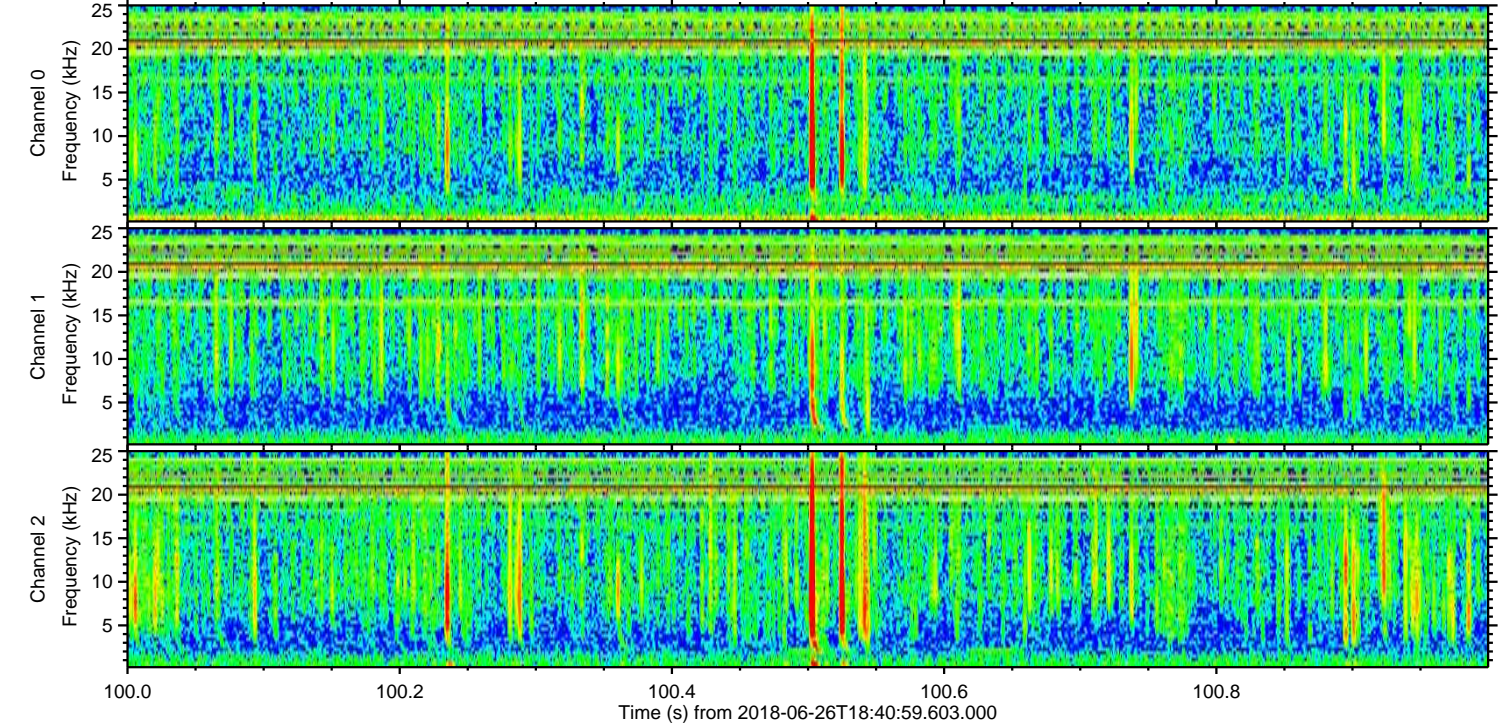
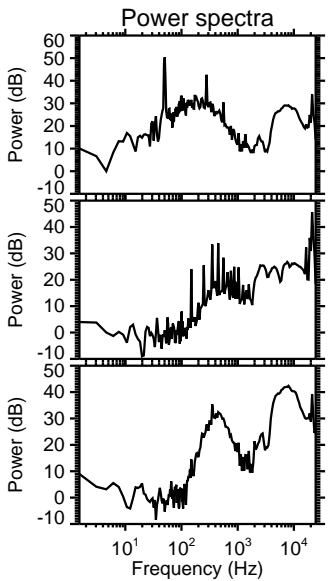
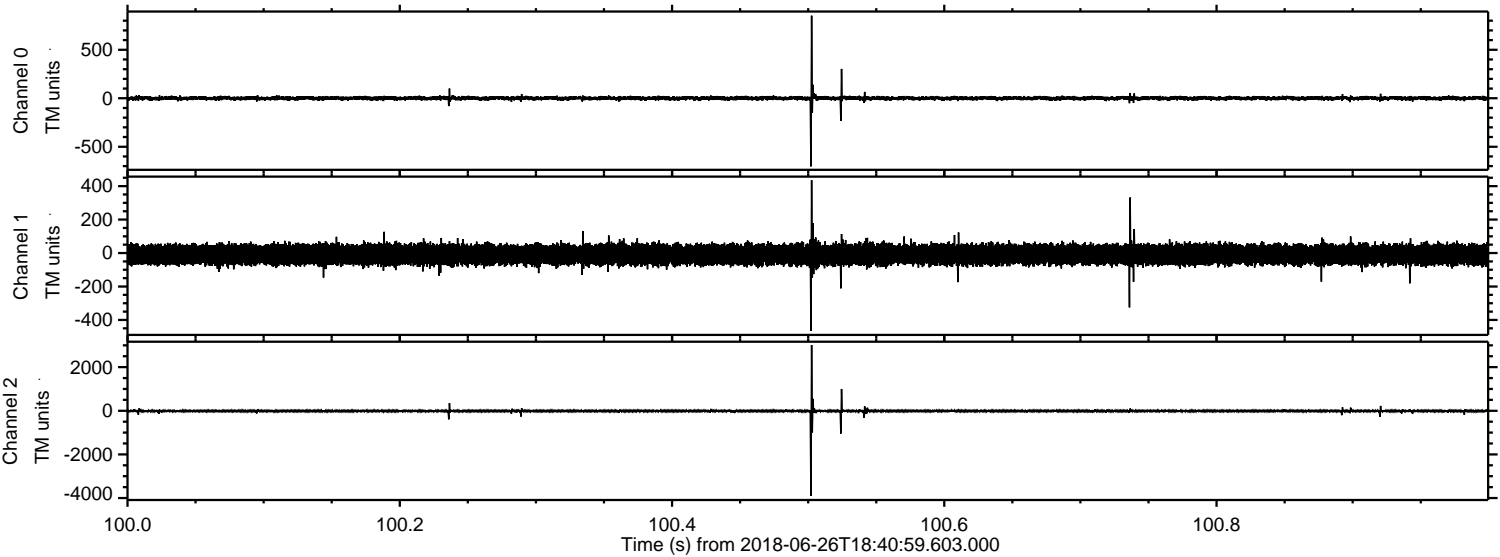
Processed Tue Jun 26 20:49:27 2018 by ELM ver.2012-10-06 from 001__elm20180626_184058__dat00.bin



Processed Tue Jun 26 20:49:28 2018 by ELM ver.2012-10-06 from 001__elm20180626_184058__dat00.bin



Processed Tue Jun 26 20:49:28 2018 by ELM ver.2012-10-06 from 001__elm20180626_184058__dat00.bin



Channel 0
mn: -703
mx: 852
 μ : 0.5
 σ : 12.0

Channel 1
mn: -466
mx: 435
 μ : -9.2
 σ : 32.7

Channel 2
mn: -3896
mx: 3015
 μ : -10.4
 σ : 36.1

