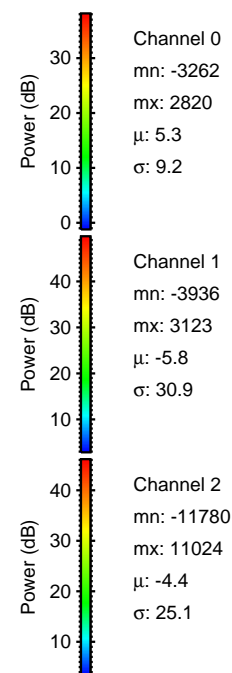
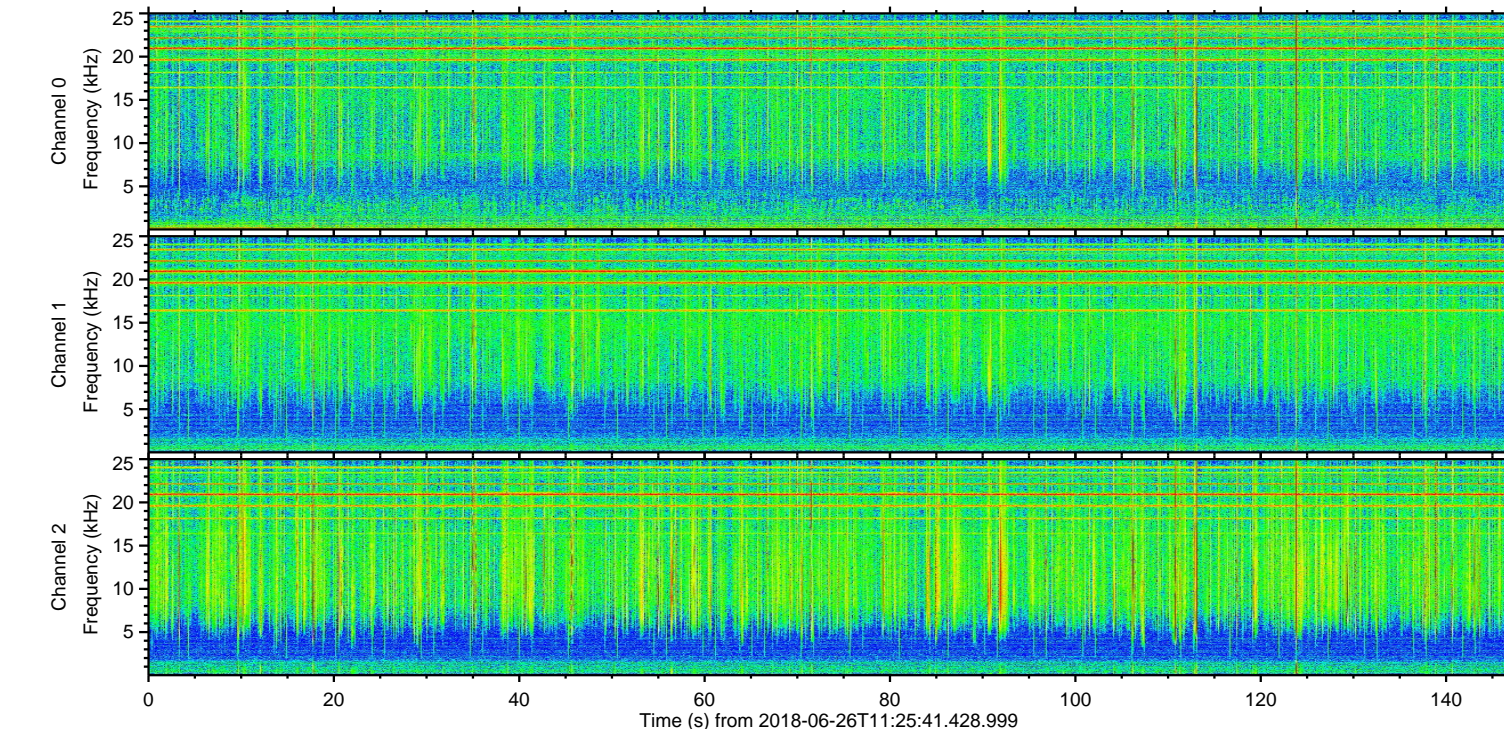
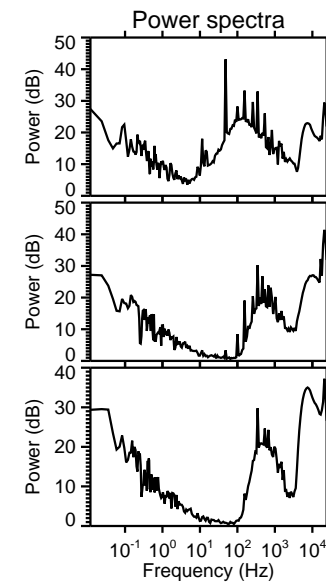
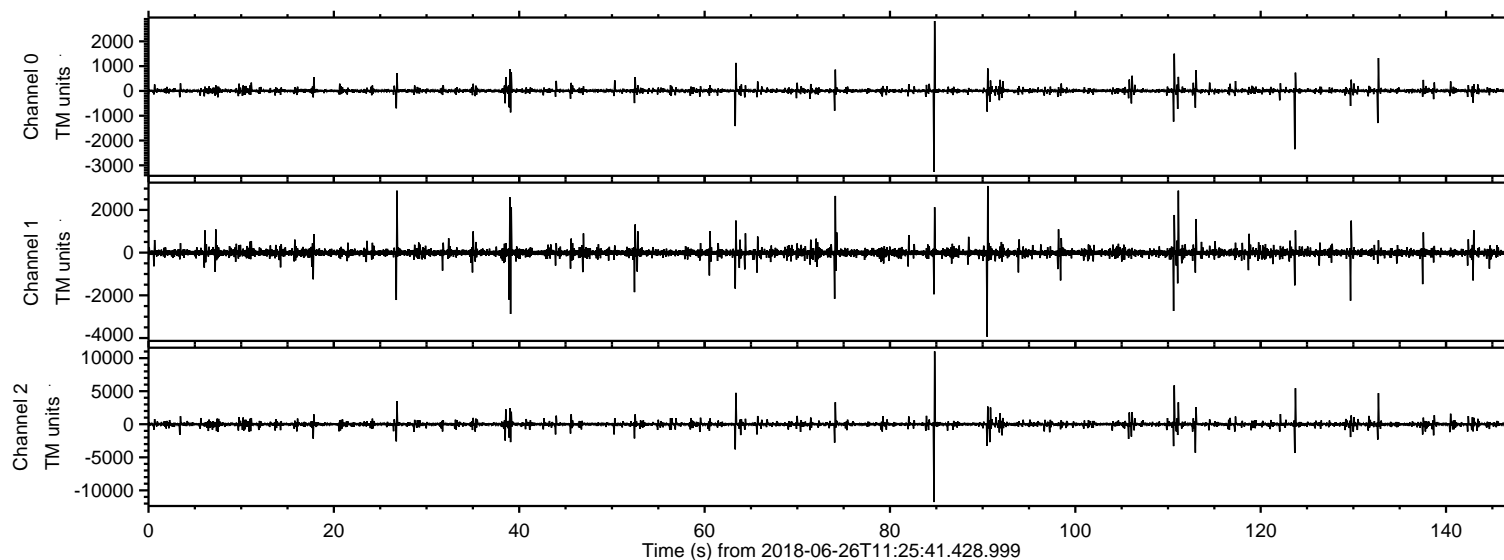
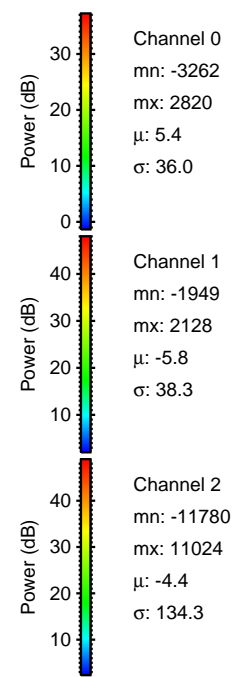
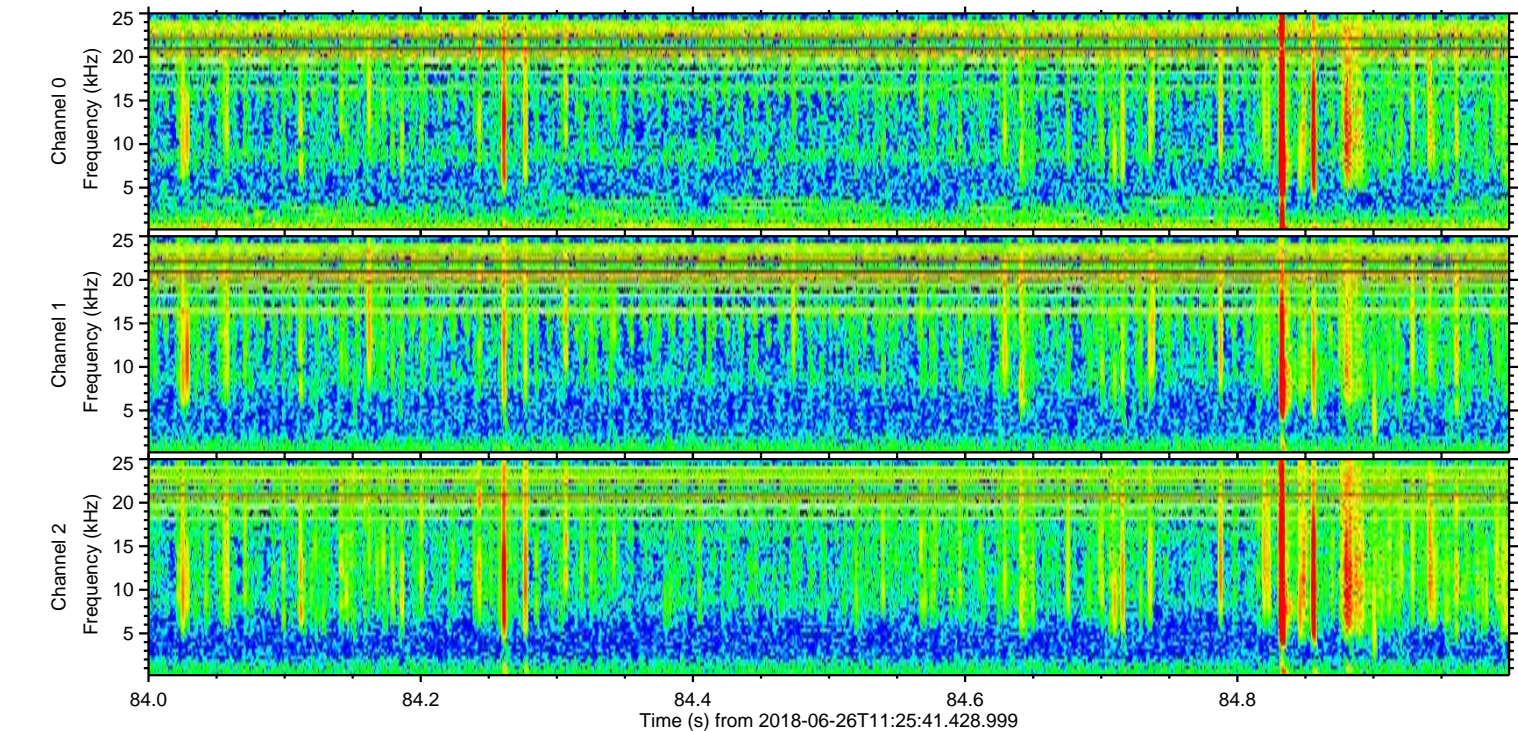
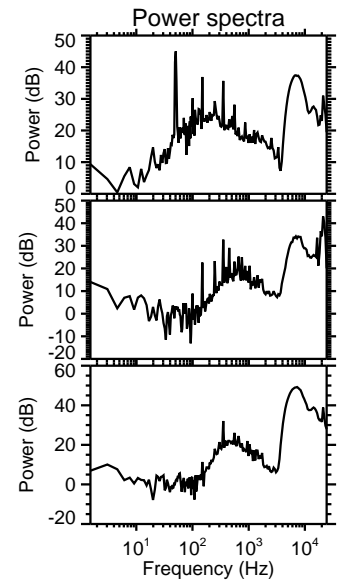
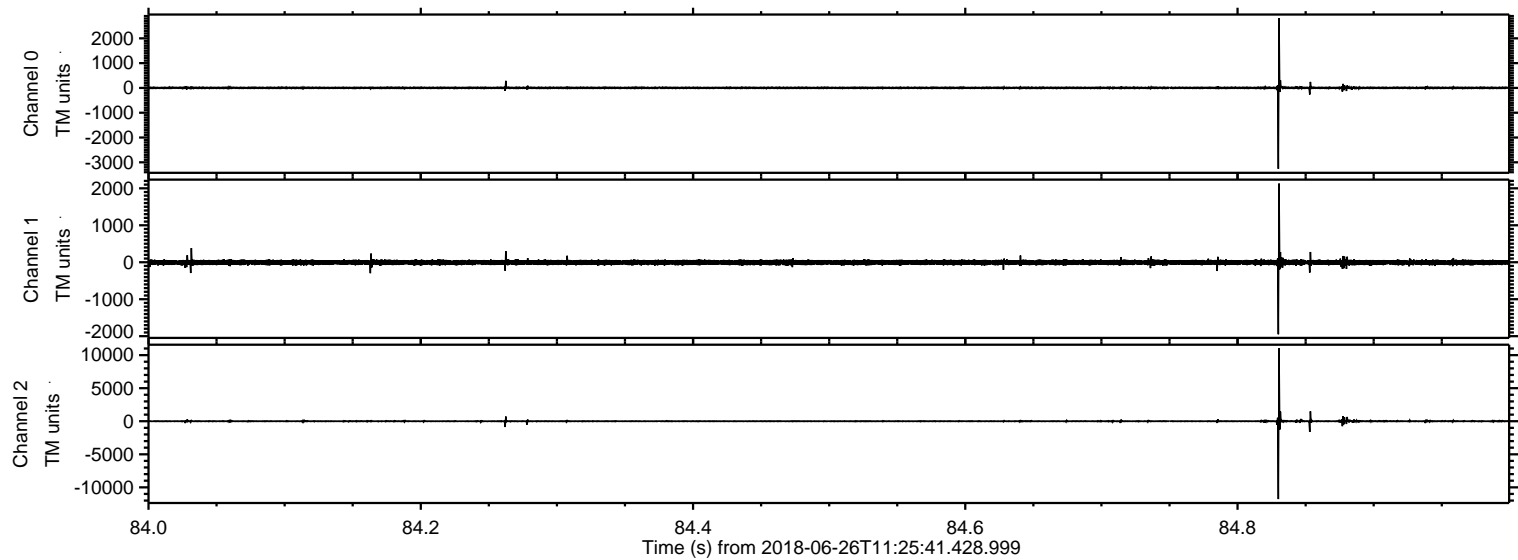


ELMAVAN 3D WAVEFORMS (Measured data sampled at 50 kHz) 51000 packets of 144 samples from 2018-06-26T11:25:41.428.999.

Processed Tue Jun 26 13:34:09 2018 by ELM ver.2012-10-06 from 001__elm20180626_112540__dat00.bin

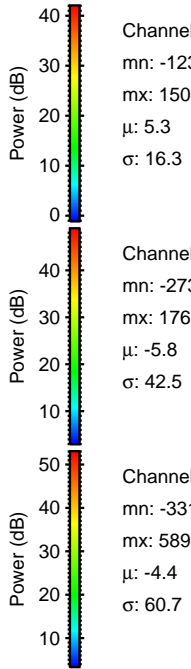
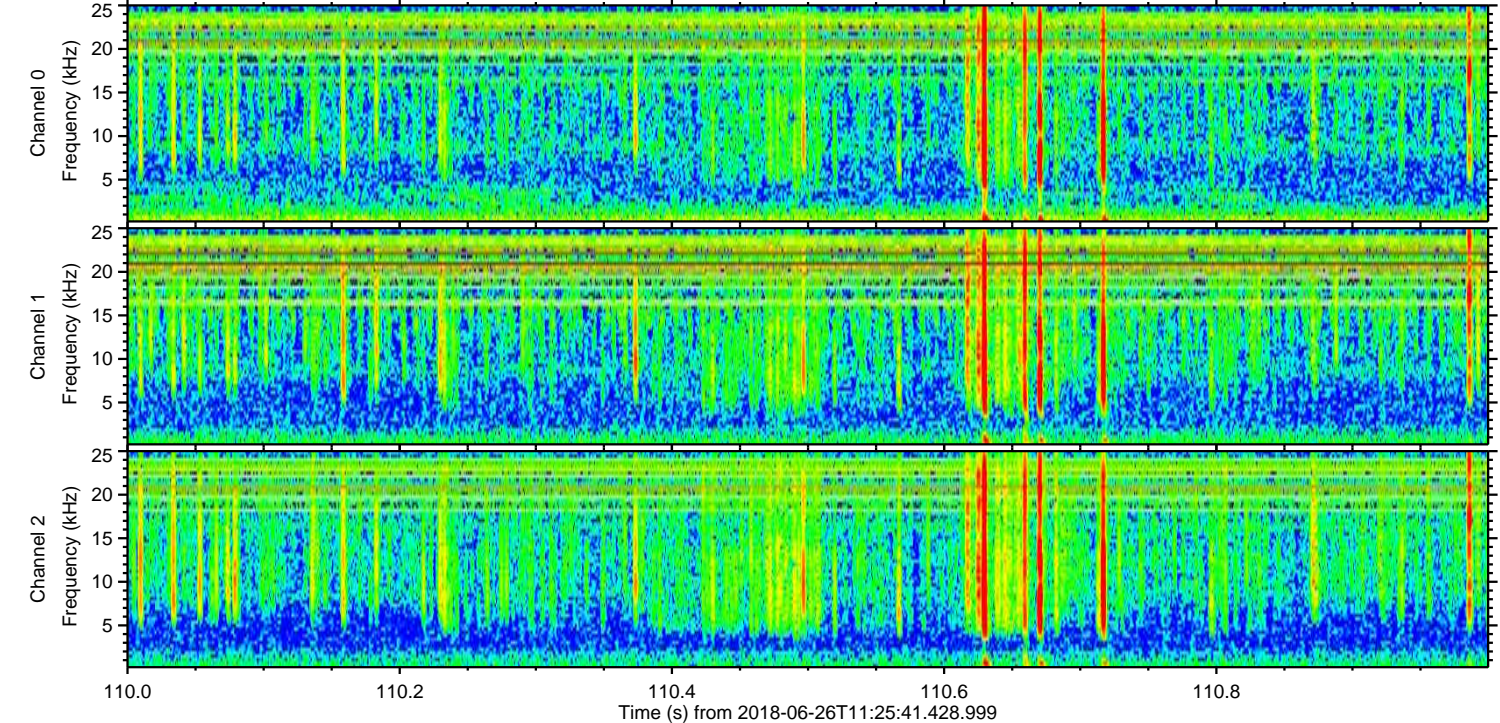
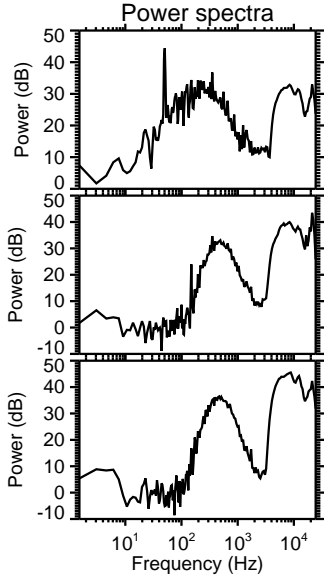
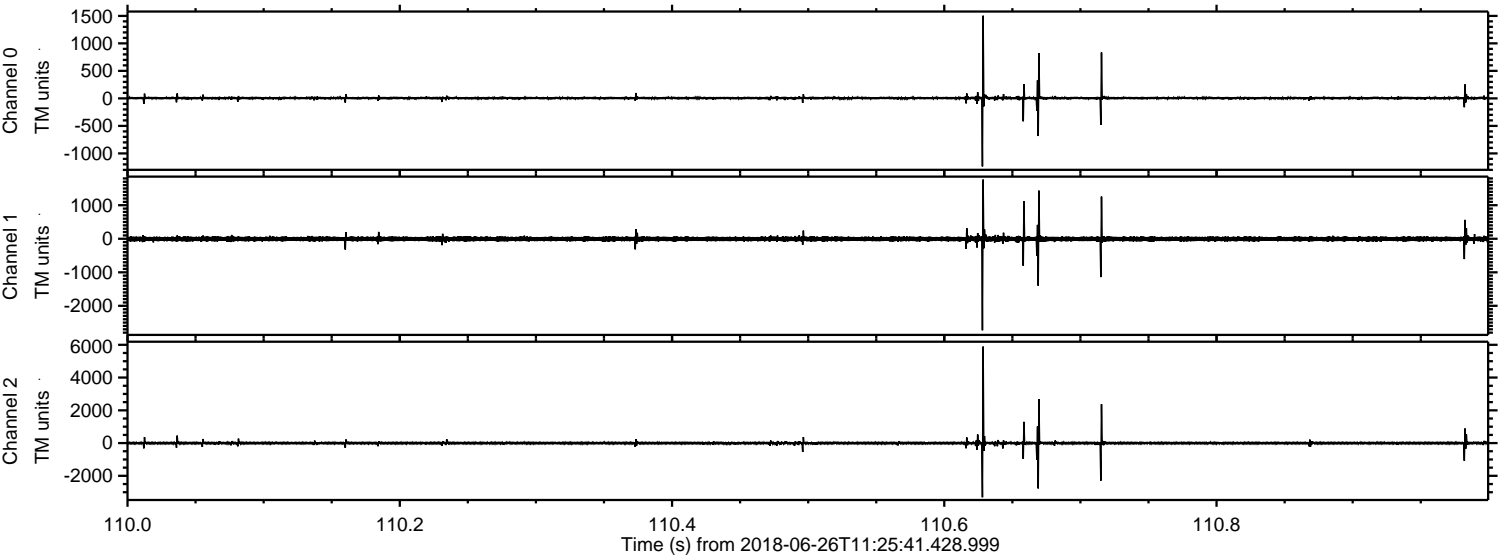


Processed Tue Jun 26 13:34:15 2018 by ELM ver.2012-10-06 from 001__elm20180626_112540__dat00.bin



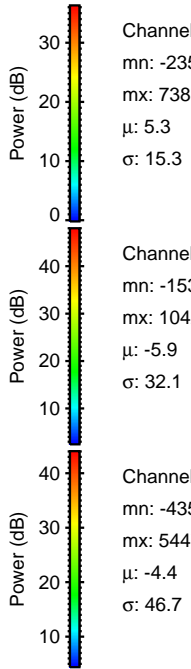
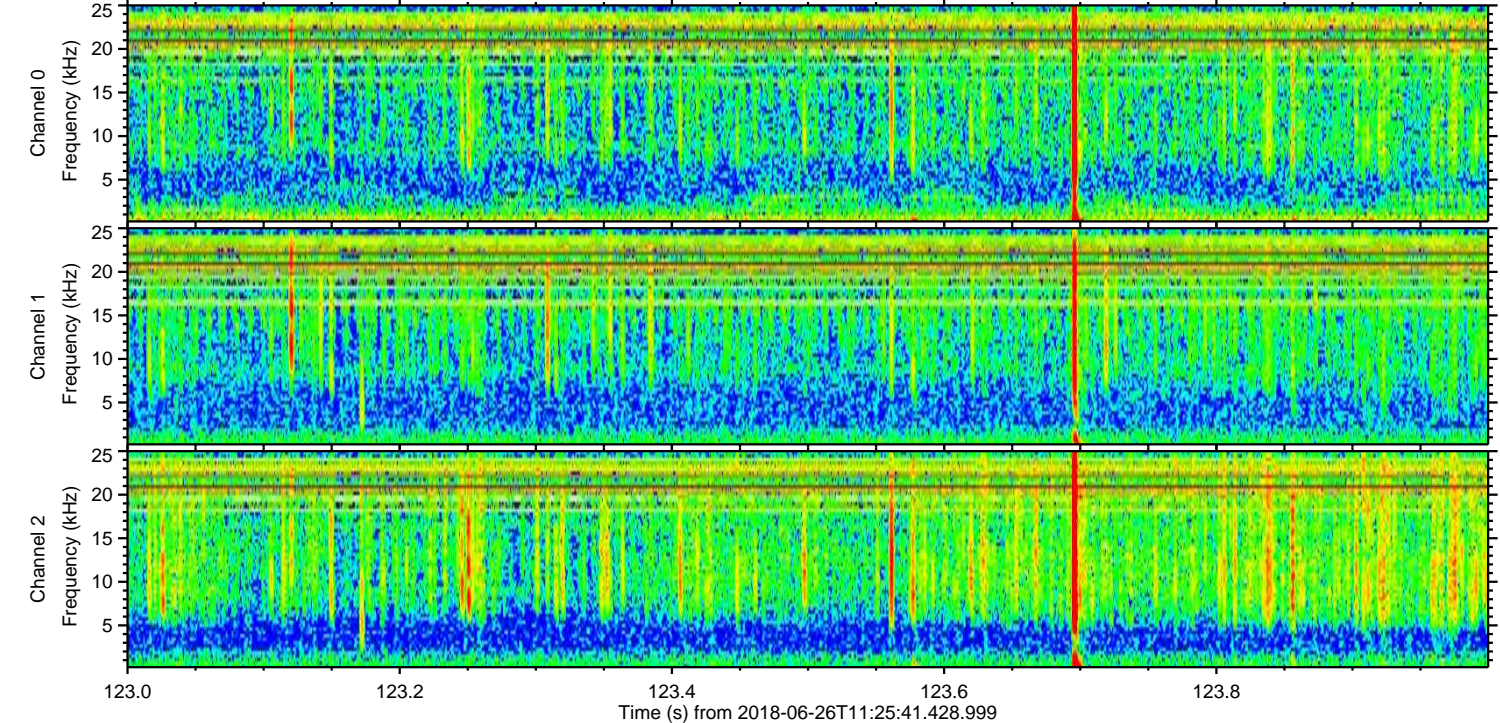
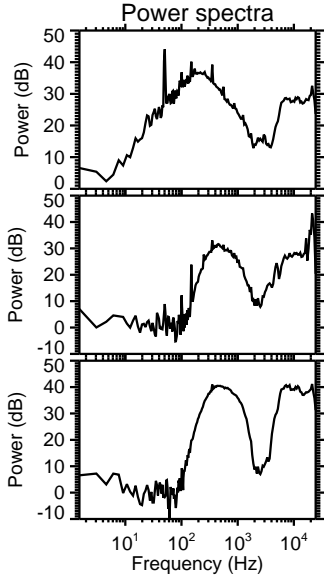
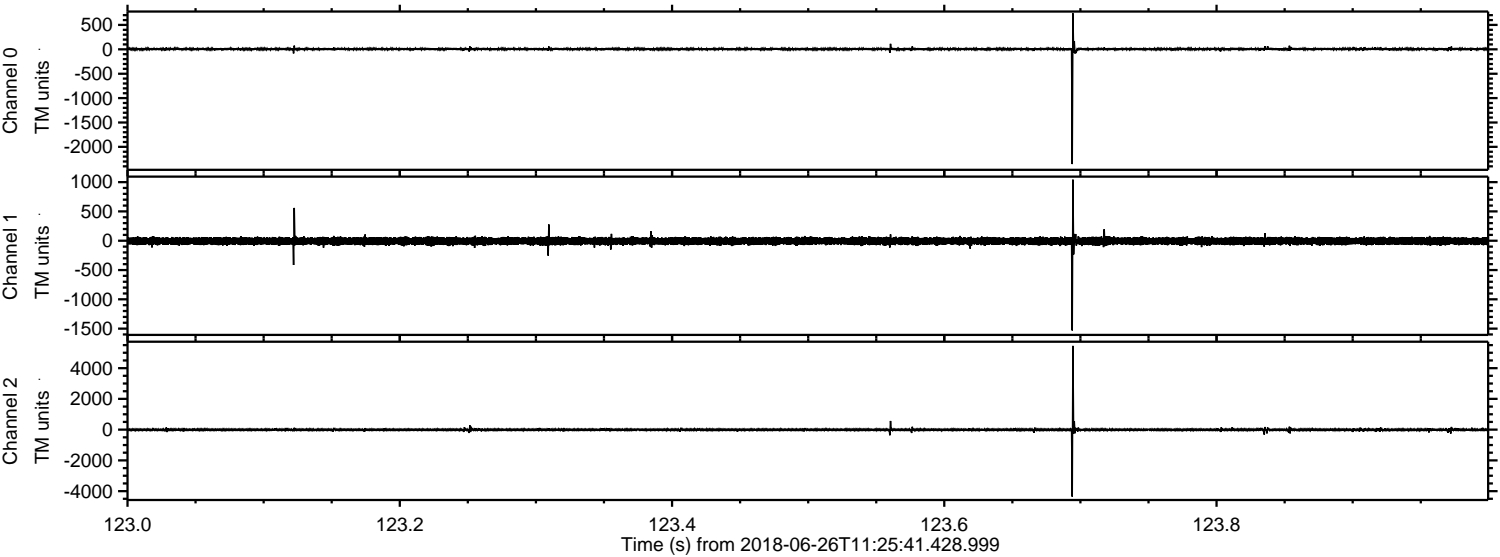
ELMAVAN 3D WAVEFORMS (Measured data sampled at 50 kHz) 51000 packets of 144 samples from 2018-06-26T11:25:41.428.999. Part 111/147

Processed Tue Jun 26 13:34:15 2018 by ELM ver.2012-10-06 from 001__elm20180626_112540__dat00.bin

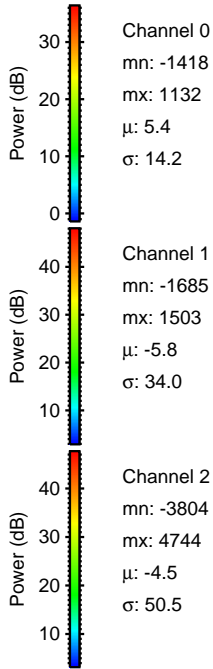
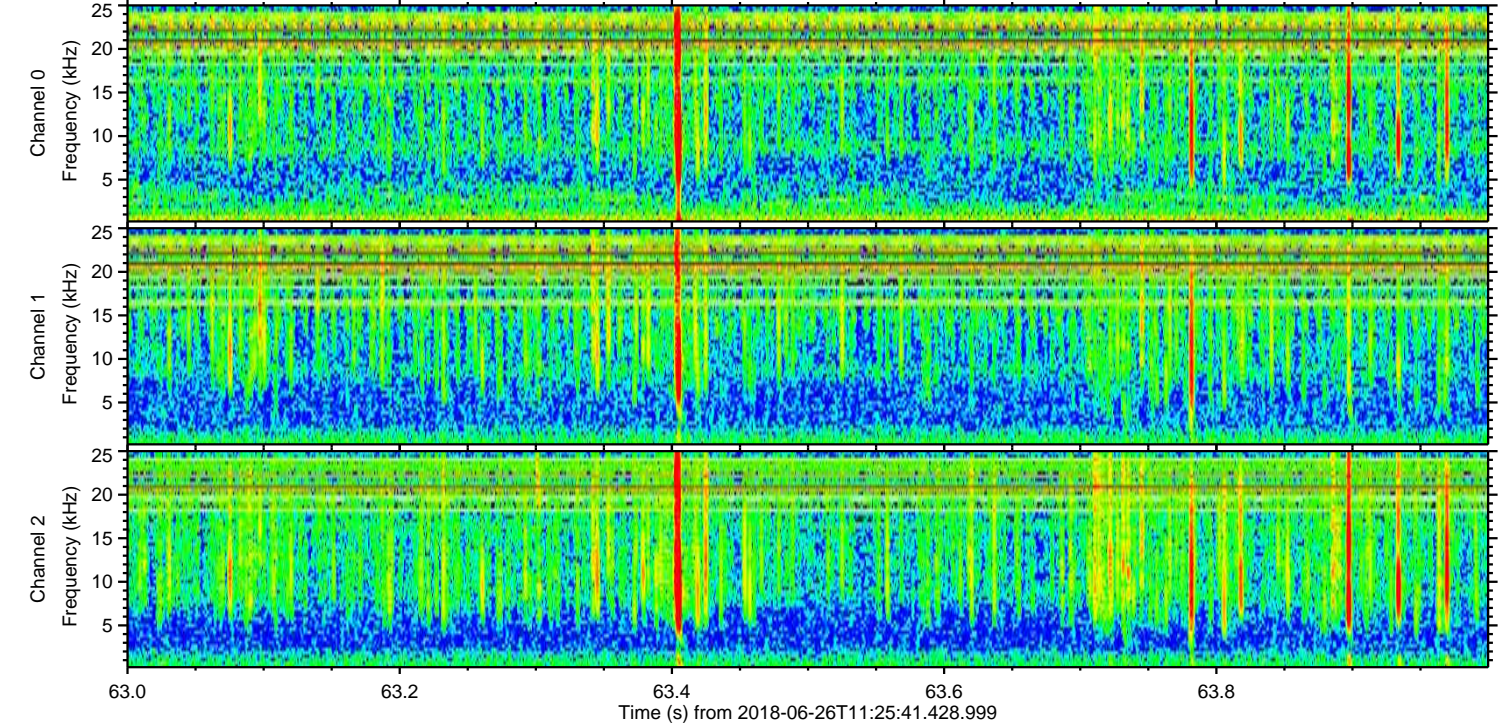
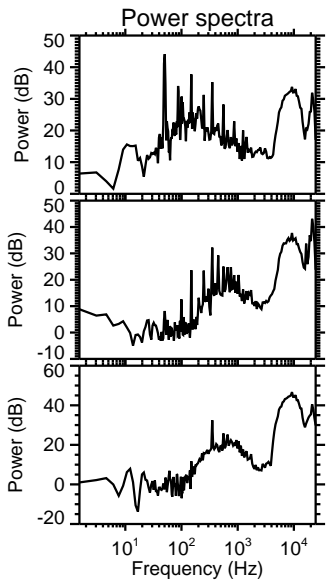
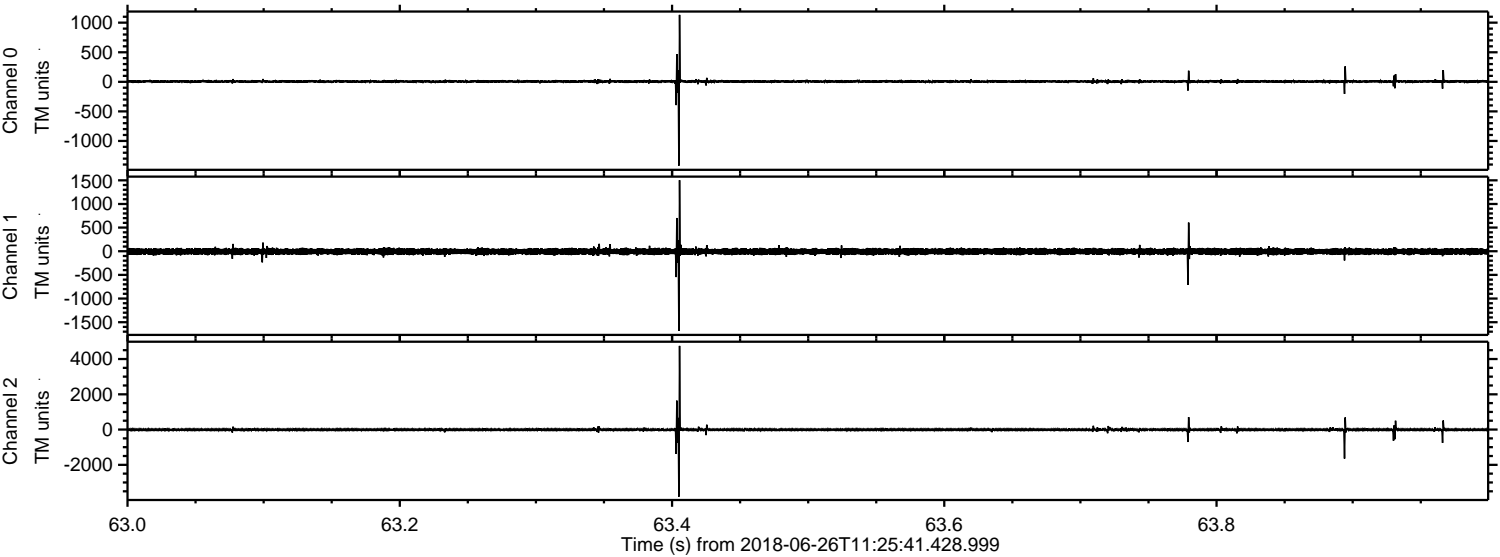


ELMAVAN 3D WAVEFORMS (Measured data sampled at 50 kHz) 51000 packets of 144 samples from 2018-06-26T11:25:41.428.999. Part 124/147

Processed Tue Jun 26 13:34:16 2018 by ELM ver.2012-10-06 from 001__elm20180626_112540__dat00.bin

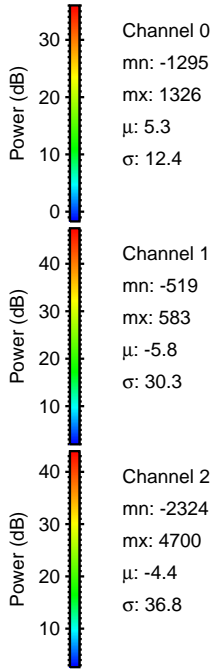
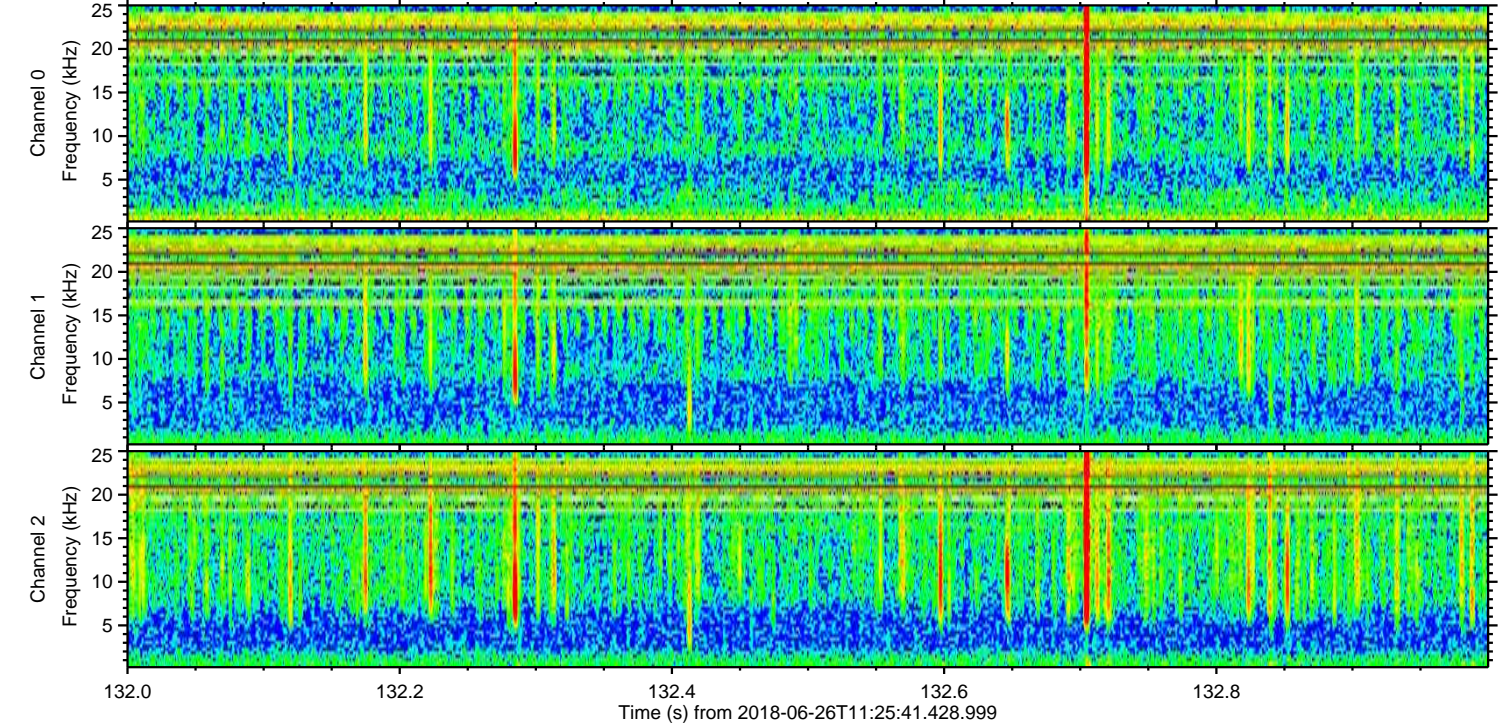
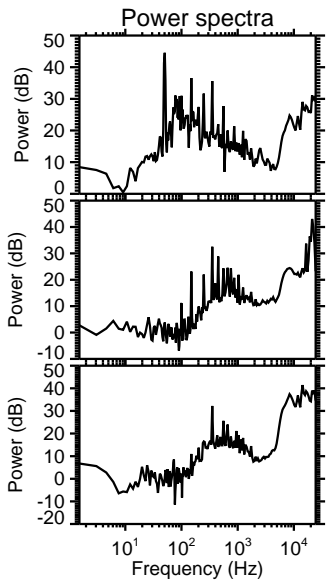
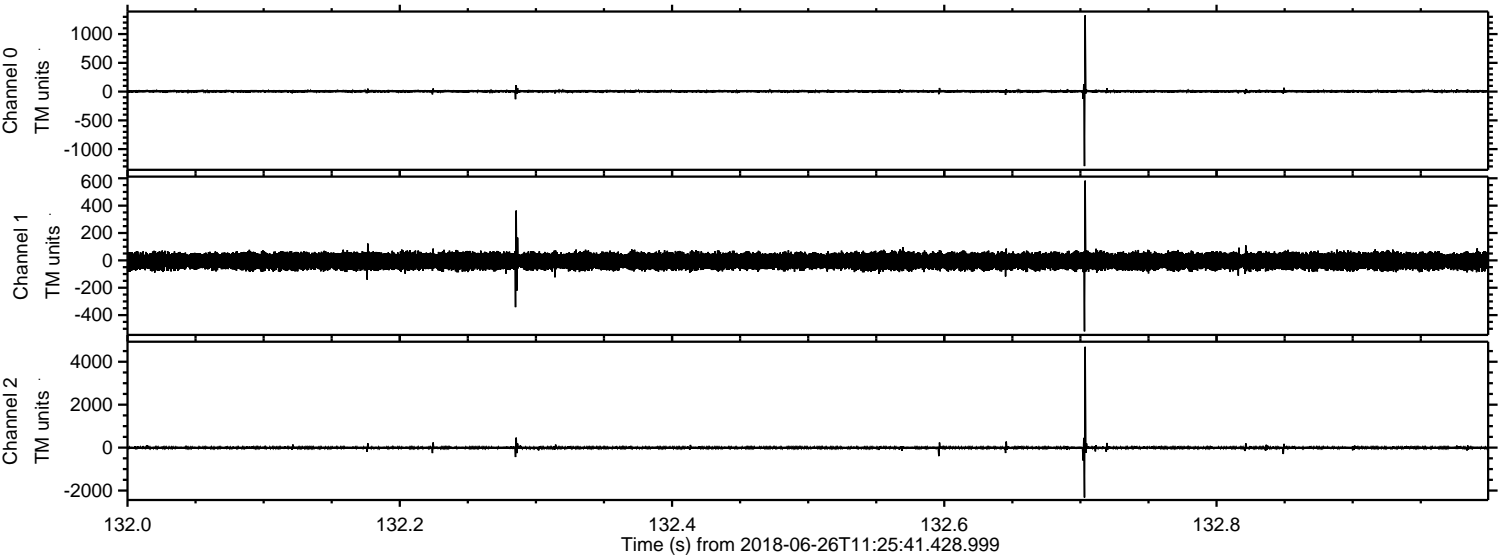


Processed Tue Jun 26 13:34:17 2018 by ELM ver.2012-10-06 from 001__elm20180626_112540__dat00.bin



ELMAVAN 3D WAVEFORMS (Measured data sampled at 50 kHz) 51000 packets of 144 samples from 2018-06-26T11:25:41.428.999. Part 133/147

Processed Tue Jun 26 13:34:17 2018 by ELM ver.2012-10-06 from 001__elm20180626_112540__dat00.bin



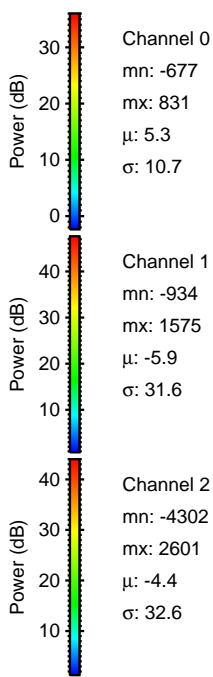
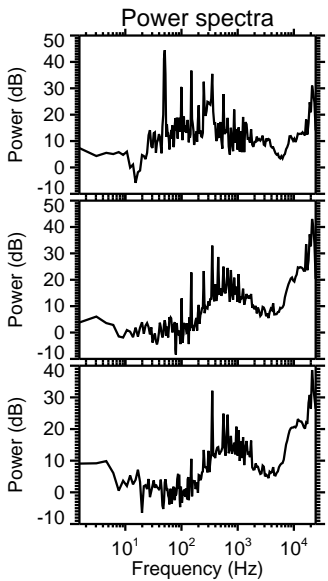
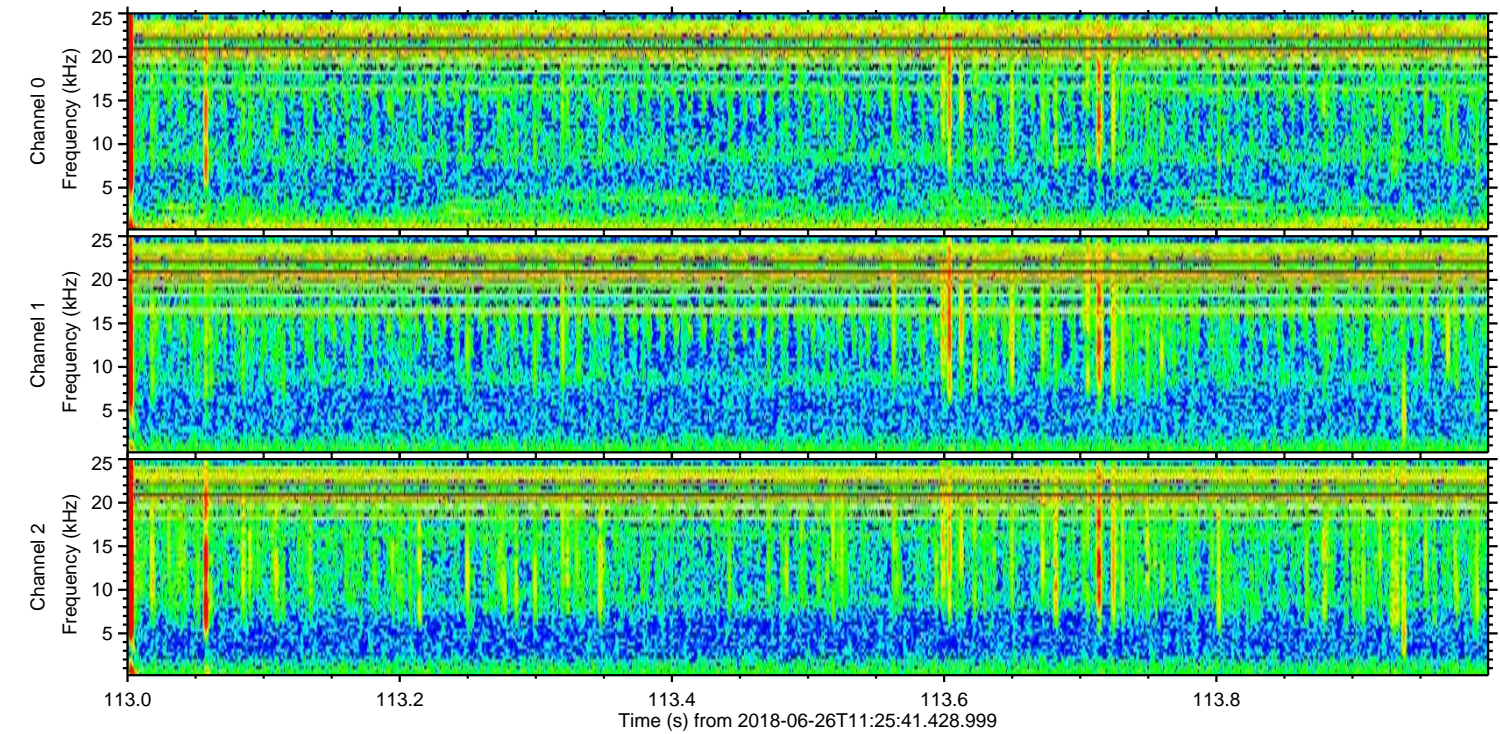
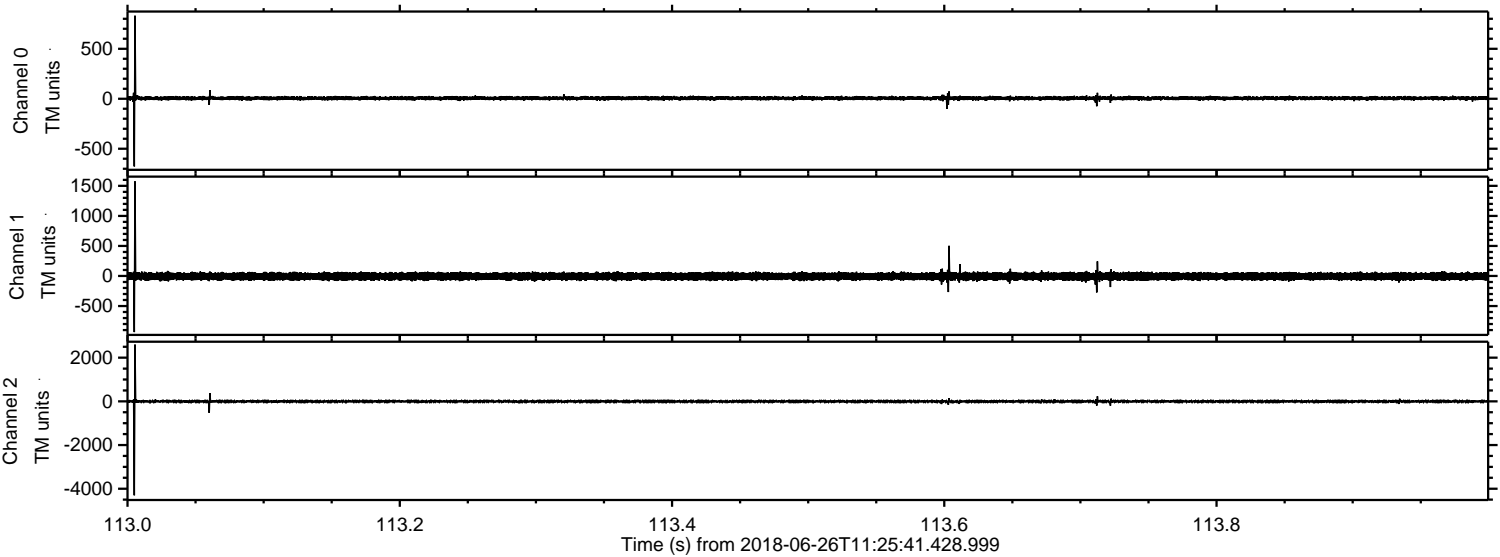
Channel 0
mn: -1295
mx: 1326
 μ : 5.3
 σ : 12.4

Channel 1
mn: -519
mx: 583
 μ : -5.8
 σ : 30.3

Channel 2
mn: -2324
mx: 4700
 μ : -4.4
 σ : 36.8

ELMAVAN 3D WAVEFORMS (Measured data sampled at 50 kHz) 51000 packets of 144 samples from 2018-06-26T11:25:41.428.999. Part 114/147

Processed Tue Jun 26 13:34:18 2018 by ELM ver.2012-10-06 from 001__elm20180626_112540__dat00.bin

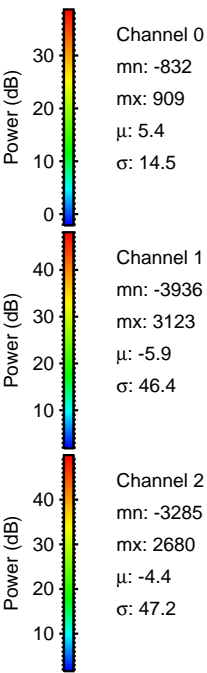
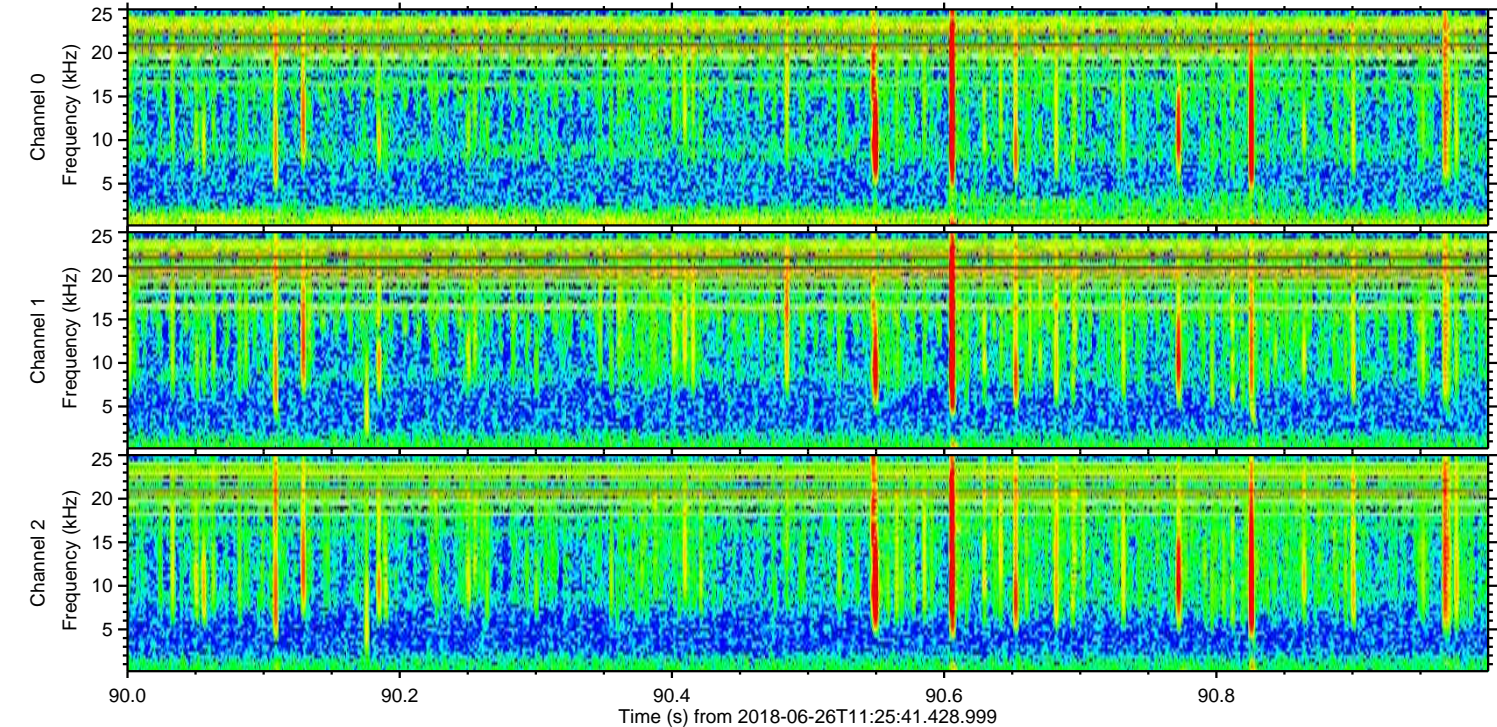
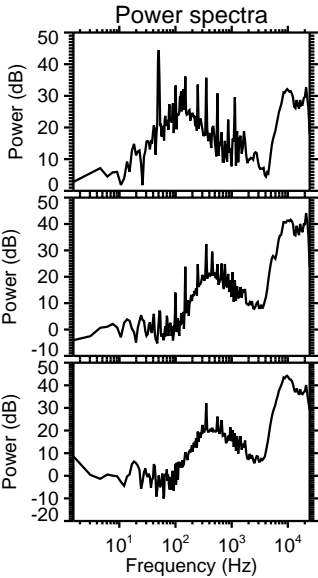
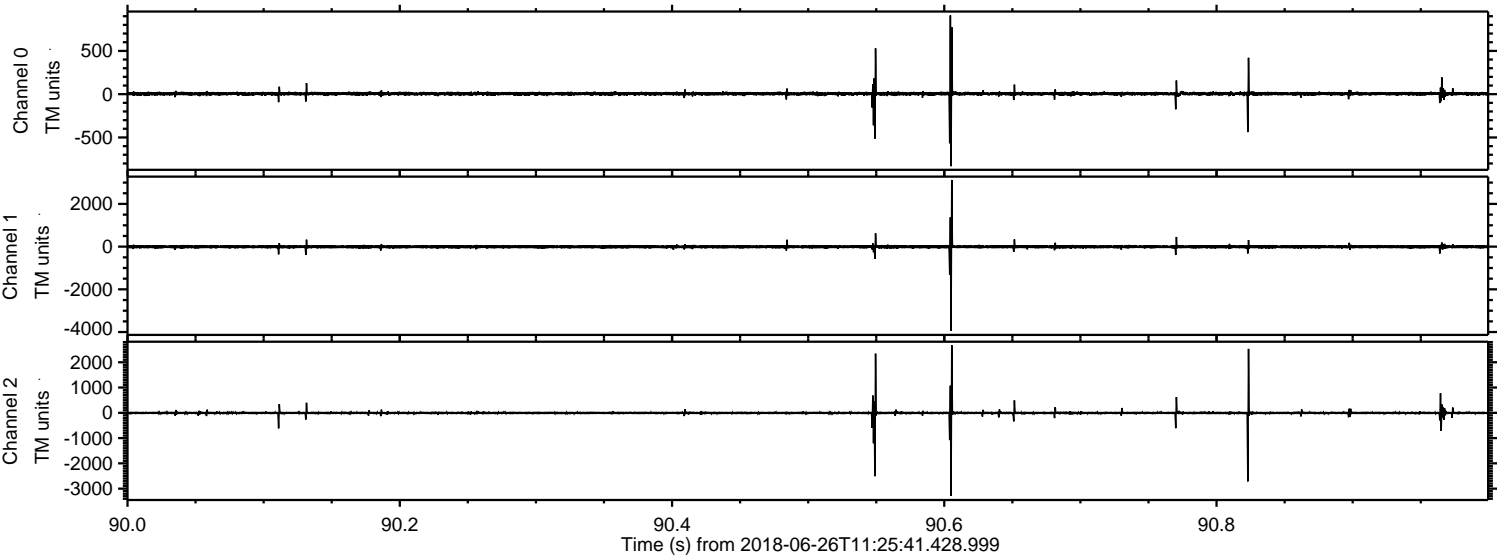


Channel 0
mn: -677
mx: 831
 μ : 5.3
 σ : 10.7

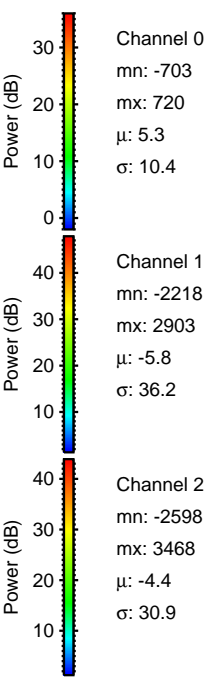
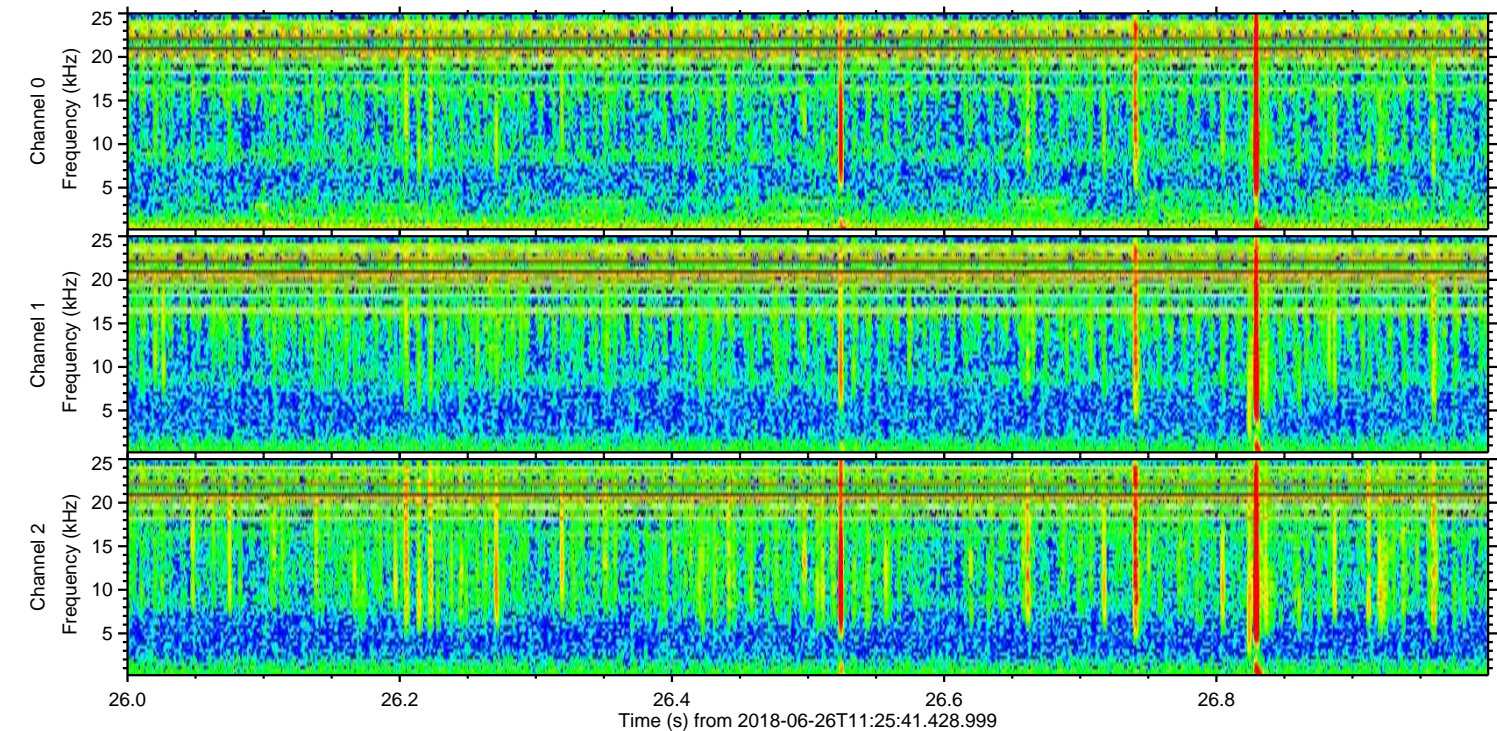
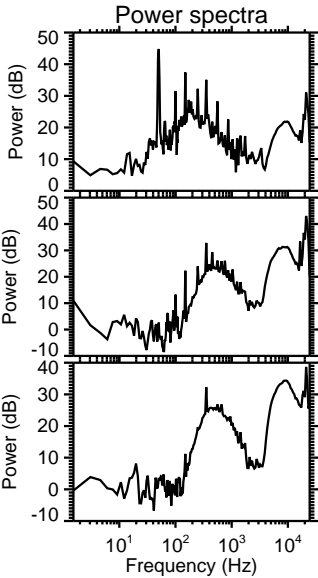
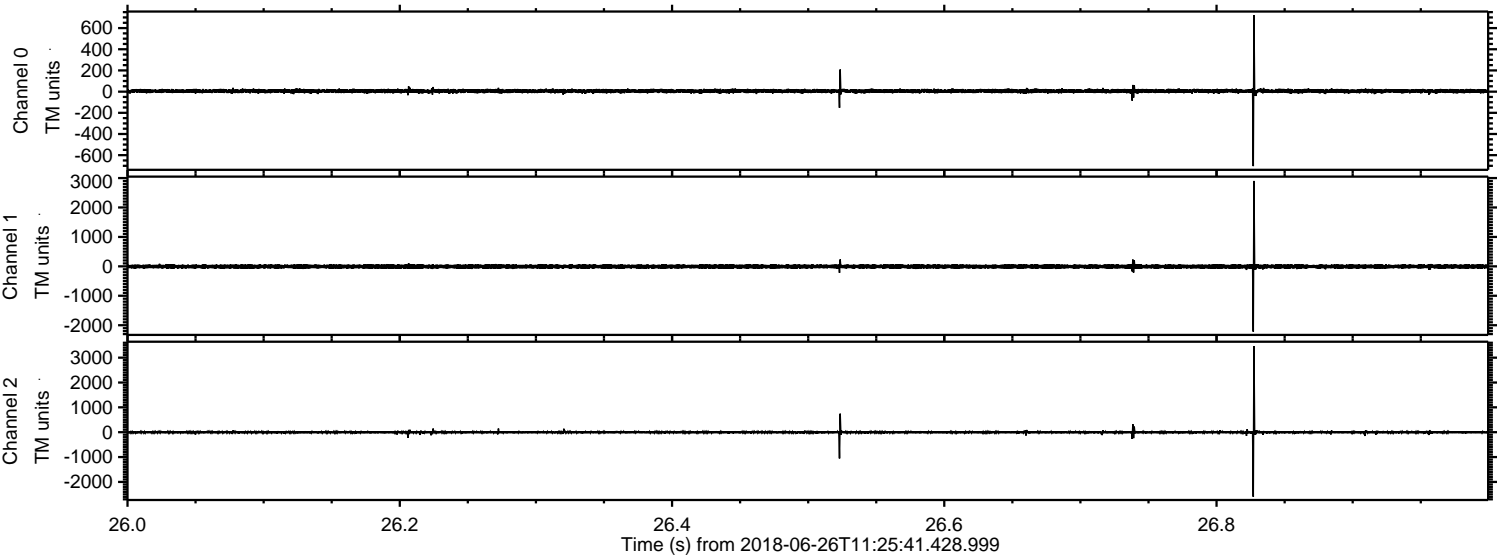
Channel 1
mn: -934
mx: 1575
 μ : -5.9
 σ : 31.6

Channel 2
mn: -4302
mx: 2601
 μ : -4.4
 σ : 32.6

Processed Tue Jun 26 13:34:18 2018 by ELM ver.2012-10-06 from 001__elm20180626_112540__dat00.bin



Processed Tue Jun 26 13:34:19 2018 by ELM ver.2012-10-06 from 001__elm20180626_112540__dat00.bin



Channel 0
mn: -703
mx: 720
 μ : 5.3
 σ : 10.4

Channel 1
mn: -2218
mx: 2903
 μ : -5.8
 σ : 36.2

Channel 2
mn: -2598
mx: 3468
 μ : -4.4
 σ : 30.9

Processed Tue Jun 26 13:34:20 2018 by ELM ver.2012-10-06 from 001__elm20180626_112540__dat00.bin

