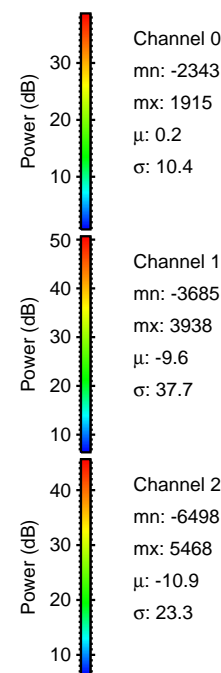
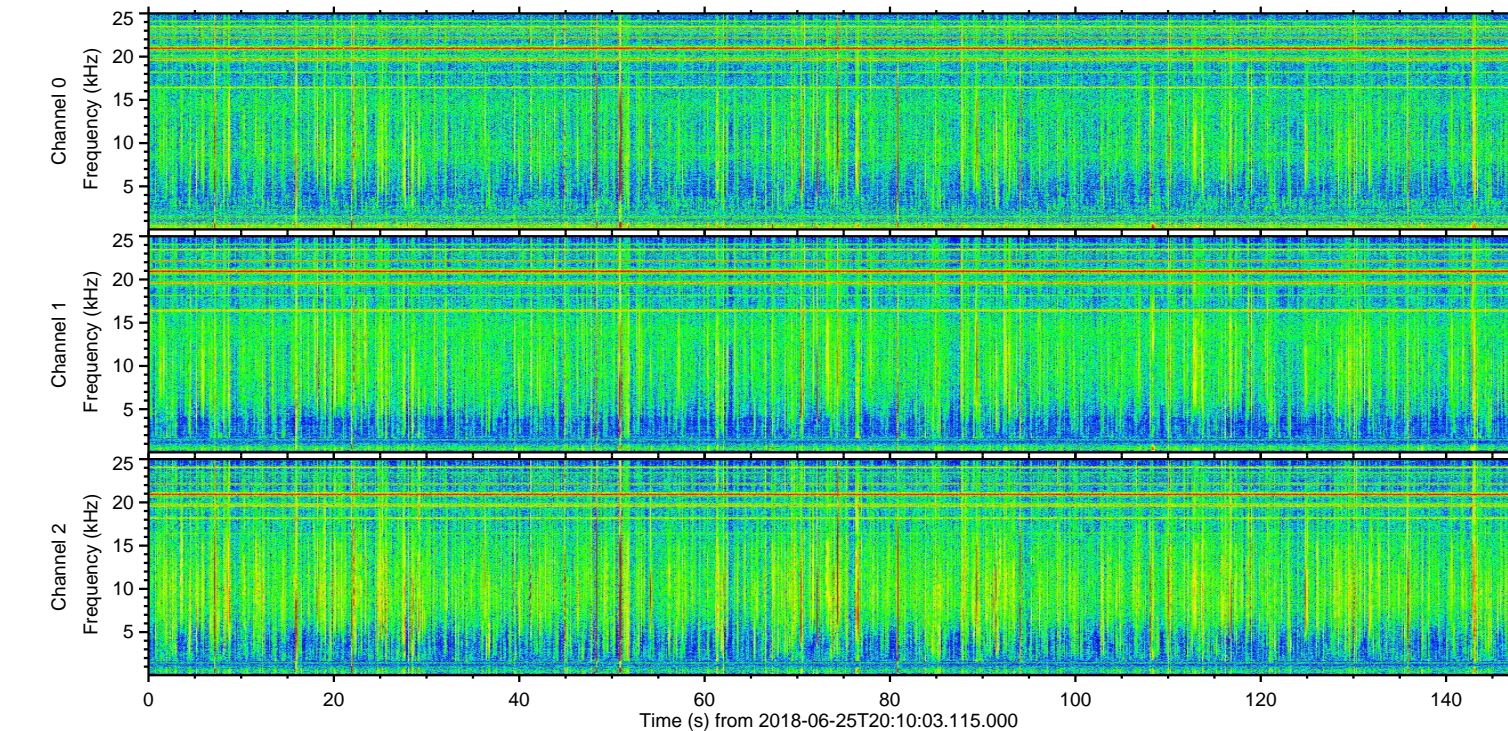
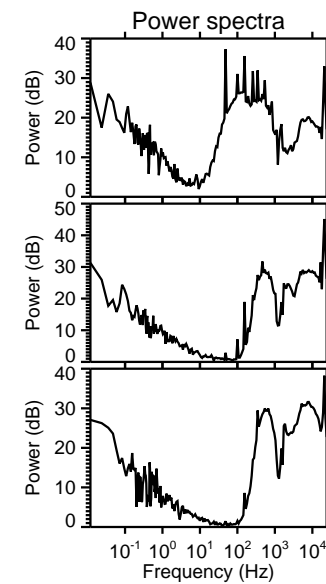
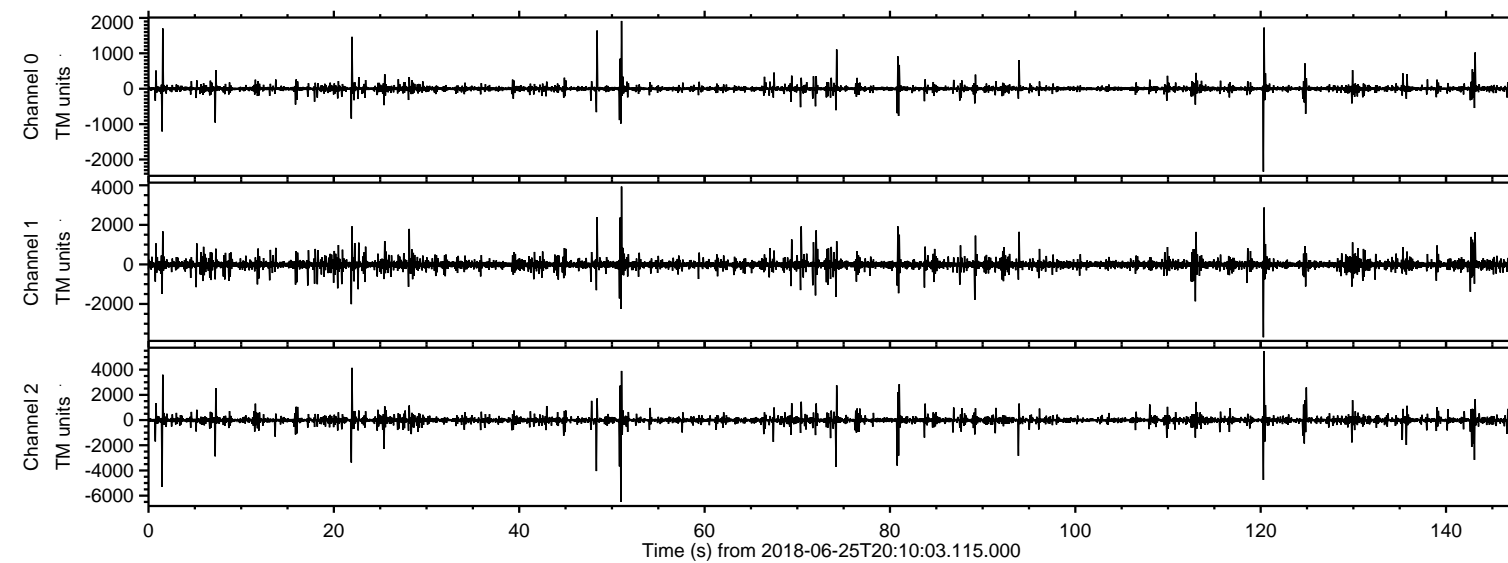
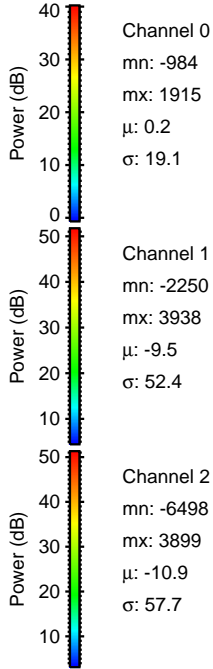
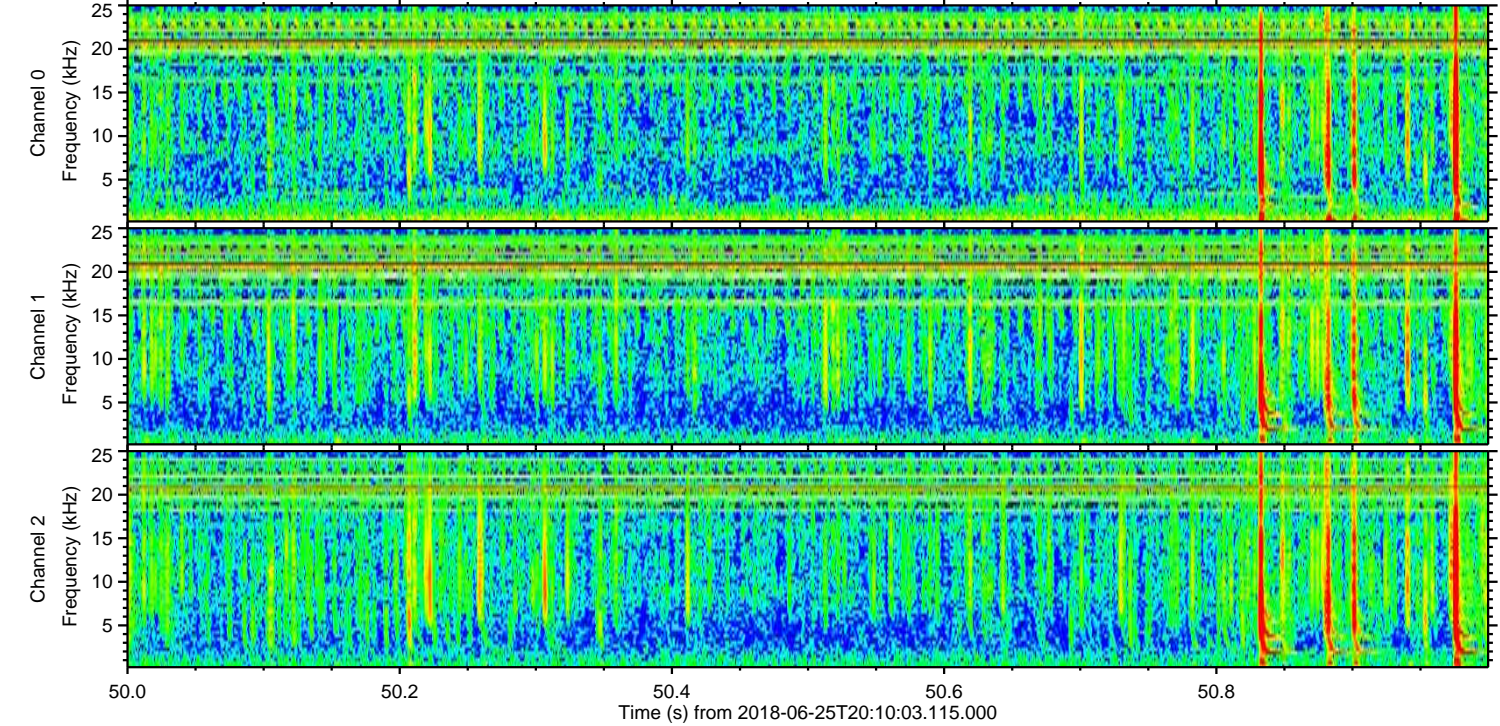
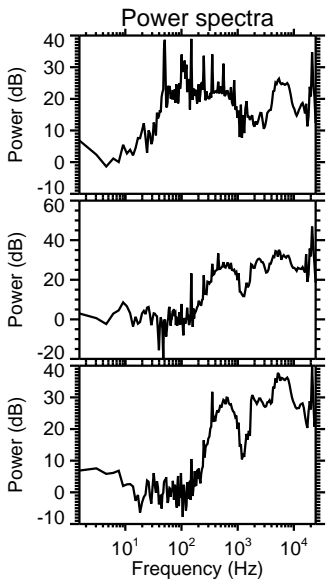
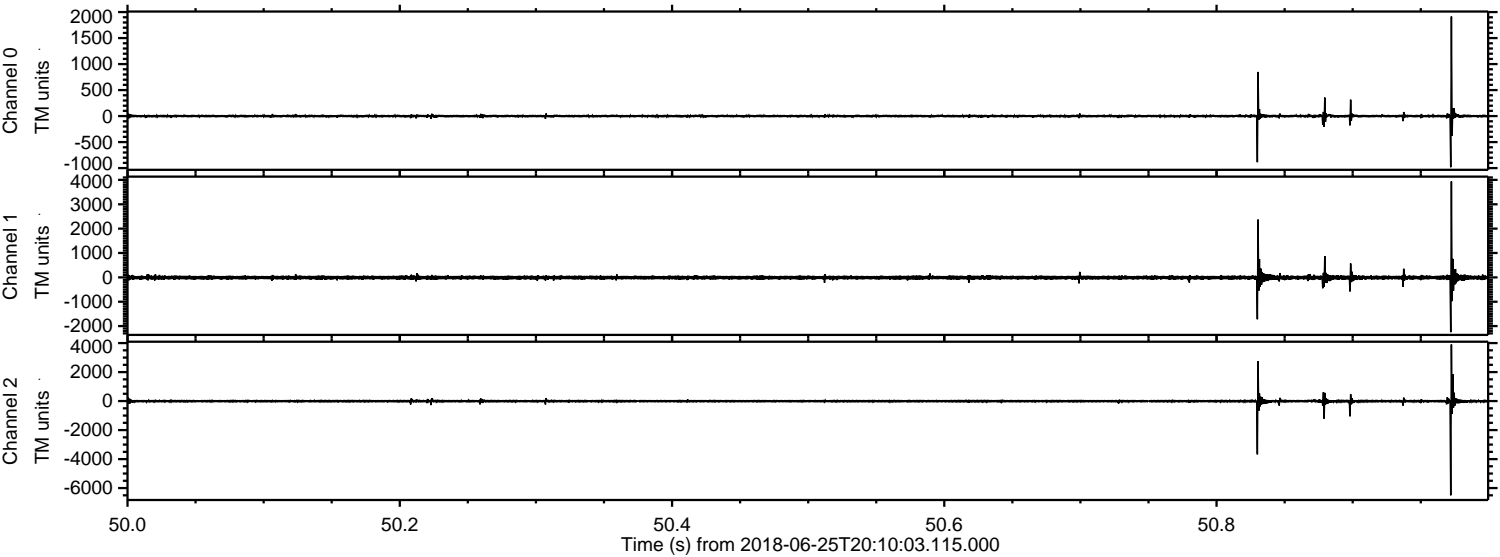


ELMAVAN 3D WAVEFORMS (Measured data sampled at 50 kHz) 51000 packets of 144 samples from 2018-06-25T20:10:03.115.000.

Processed Mon Jun 25 22:18:04 2018 by ELM ver.2012-10-06 from 001__elm20180625_201002__dat00.bin

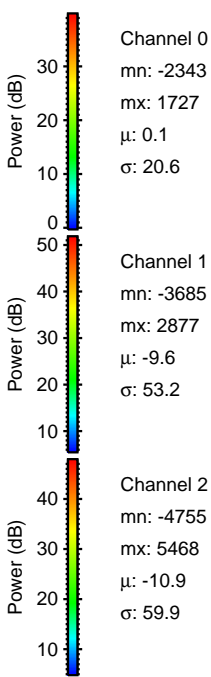
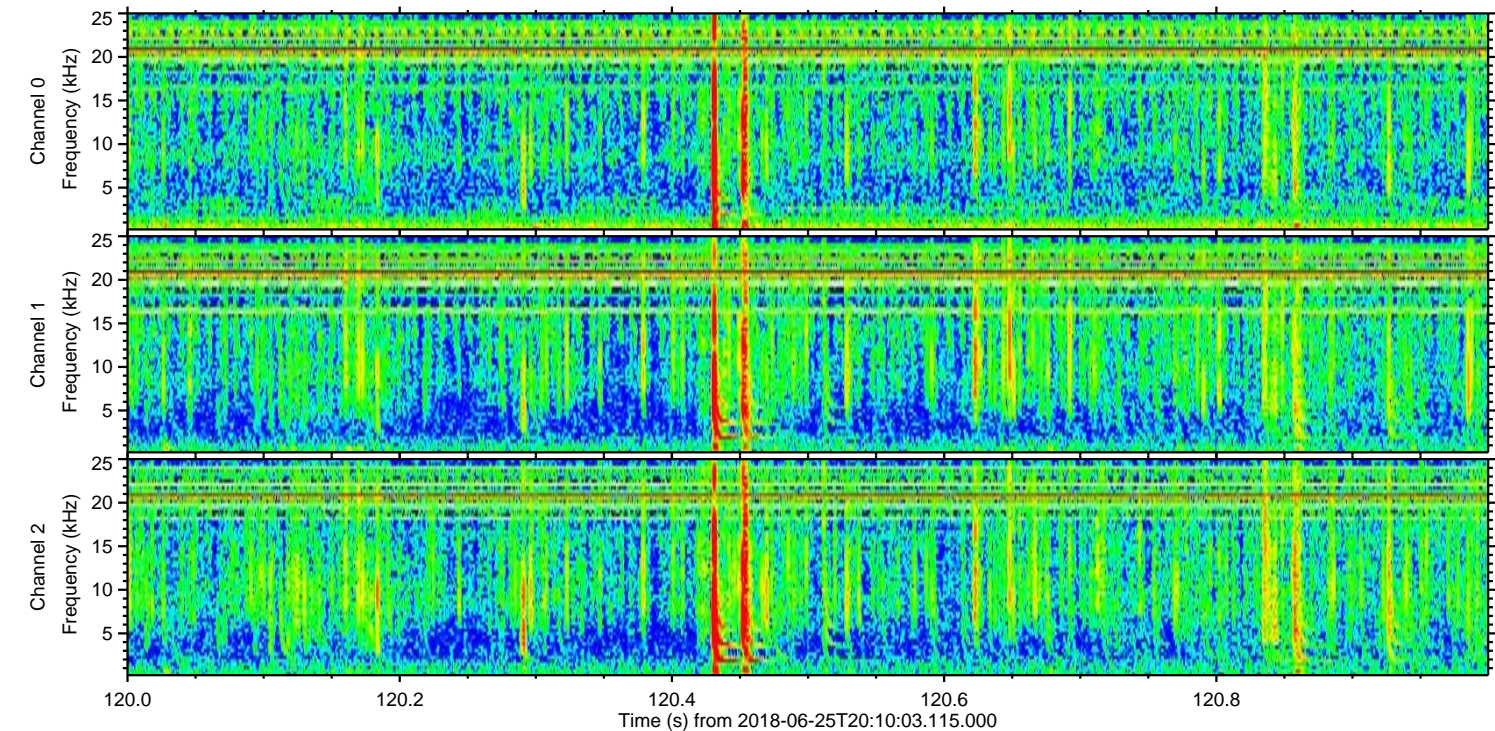
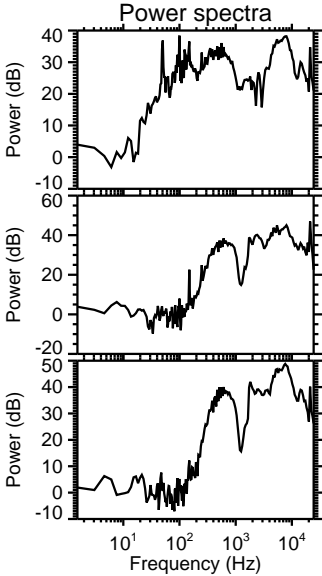
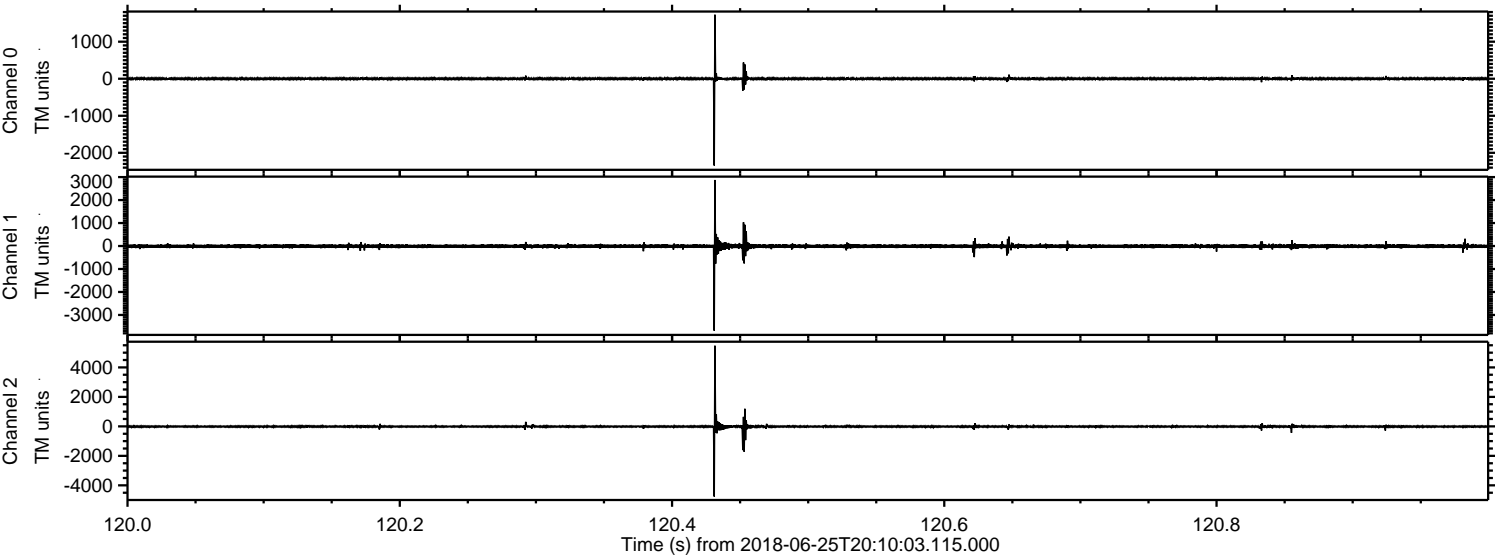


Processed Mon Jun 25 22:18:14 2018 by ELM ver.2012-10-06 from 001__elm20180625_201002__dat00.bin

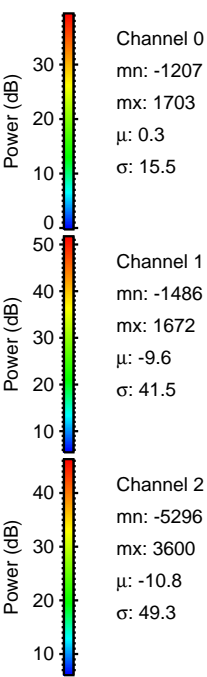
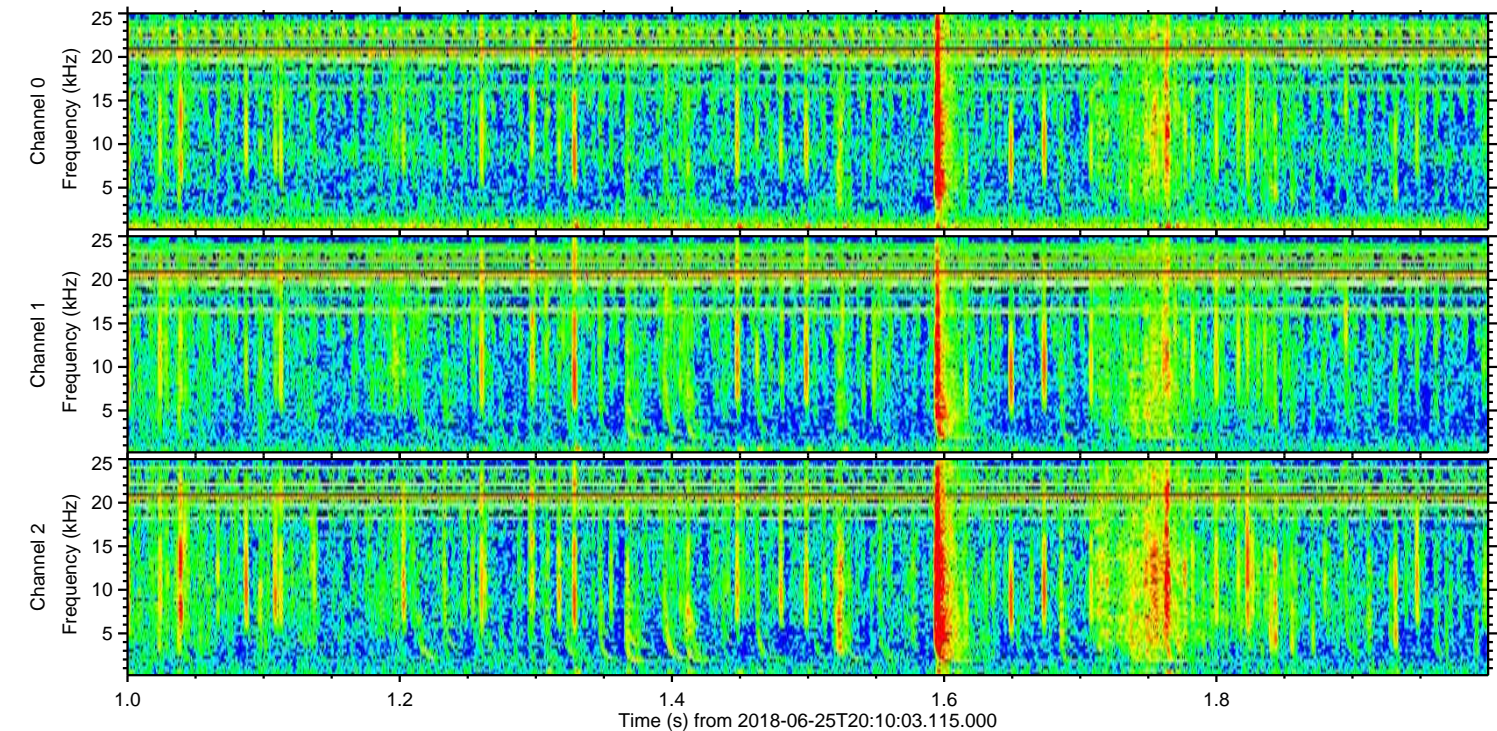
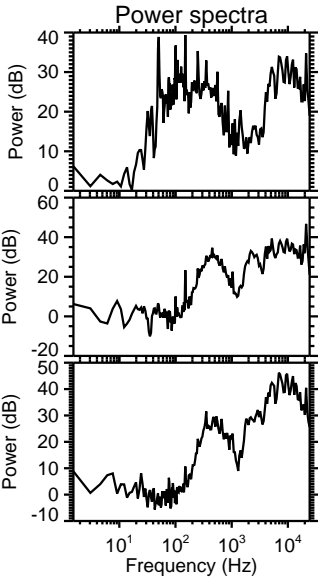
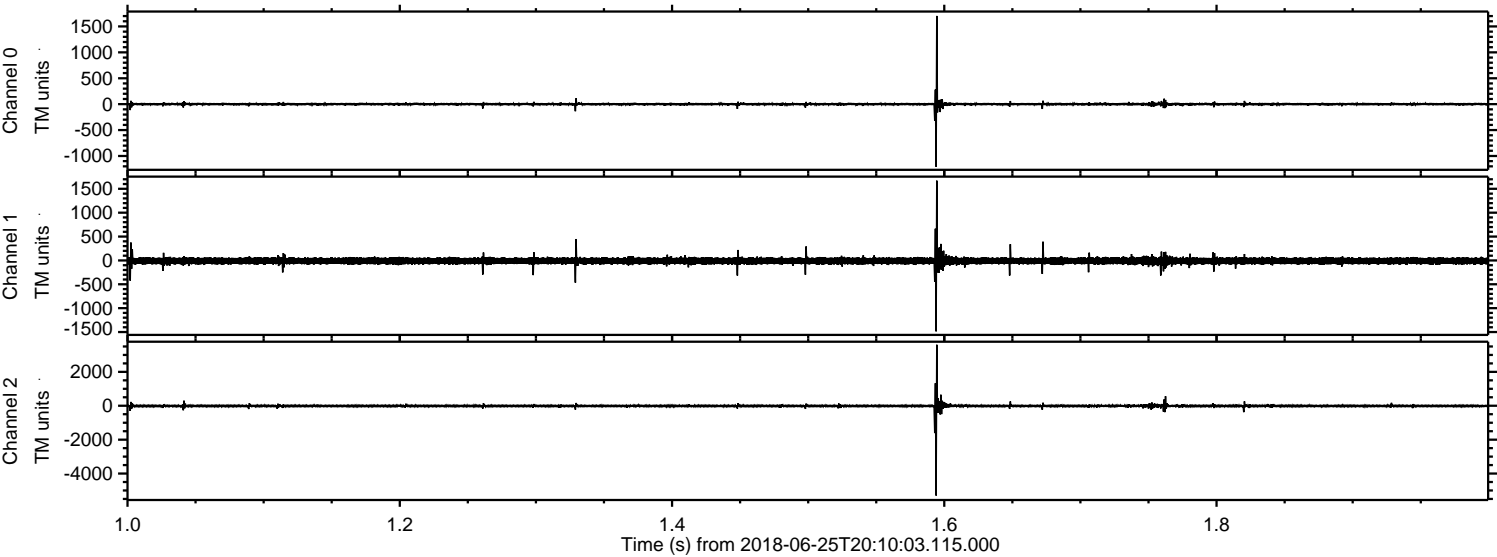


ELMAVAN 3D WAVEFORMS (Measured data sampled at 50 kHz) 51000 packets of 144 samples from 2018-06-25T20:10:03.115.000. Part 121/147

Processed Mon Jun 25 22:18:15 2018 by ELM ver.2012-10-06 from 001__elm20180625_201002__dat00.bin

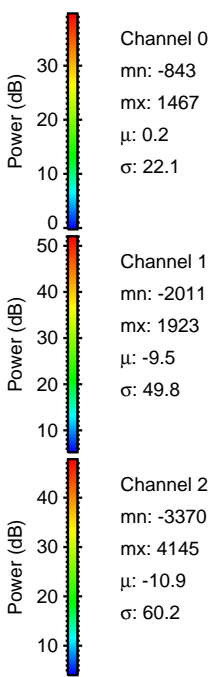
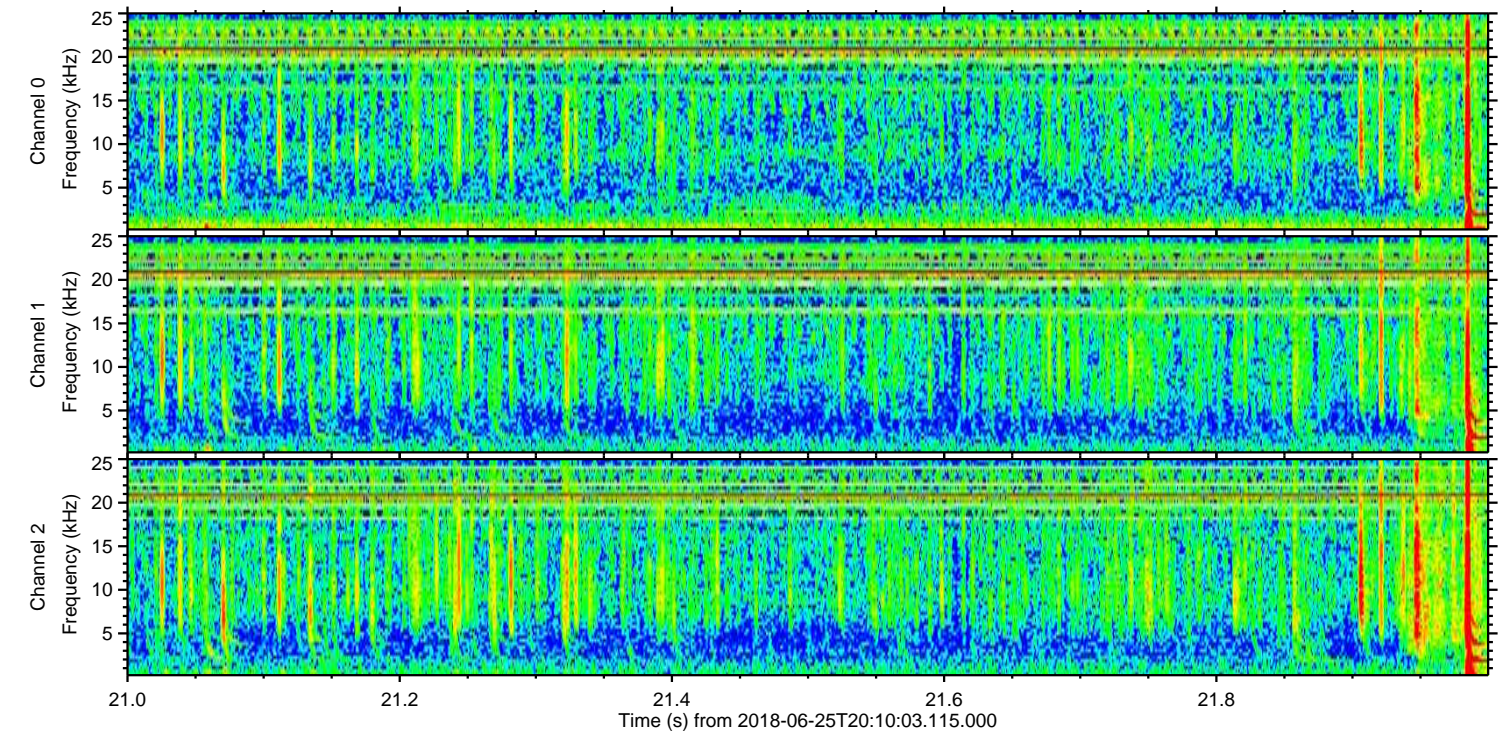
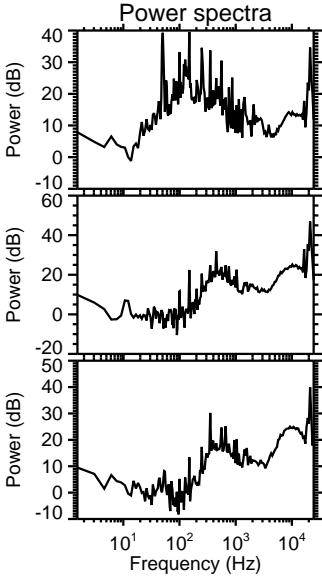
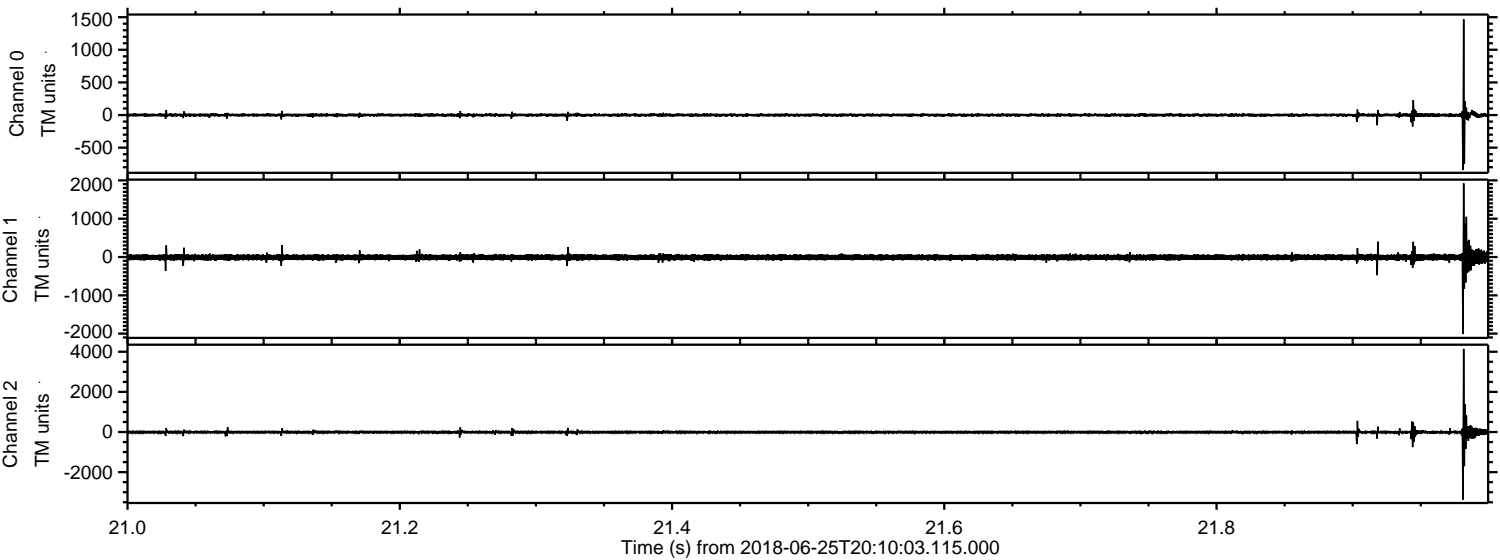


Processed Mon Jun 25 22:18:16 2018 by ELM ver.2012-10-06 from 001__elm20180625_201002__dat00.bin

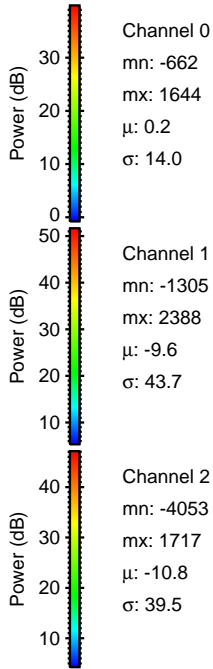
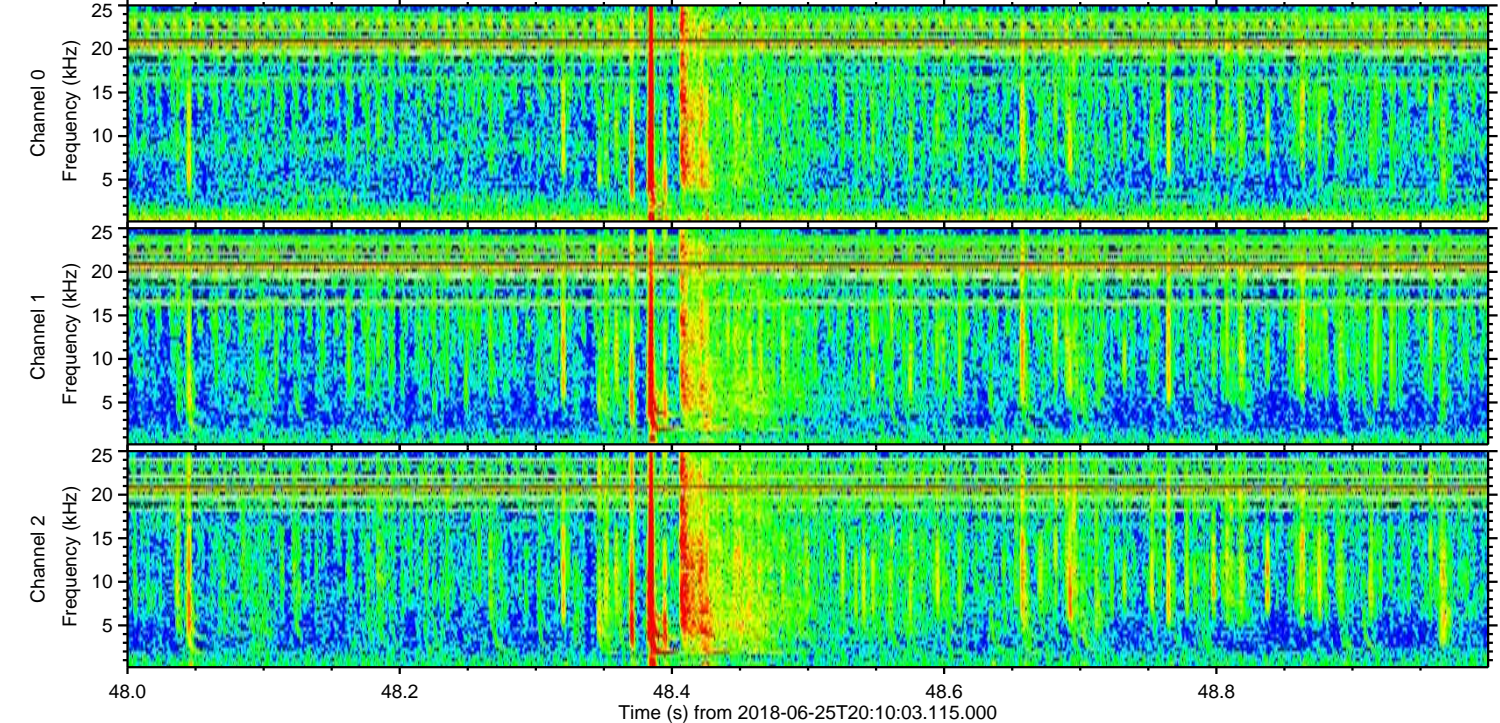
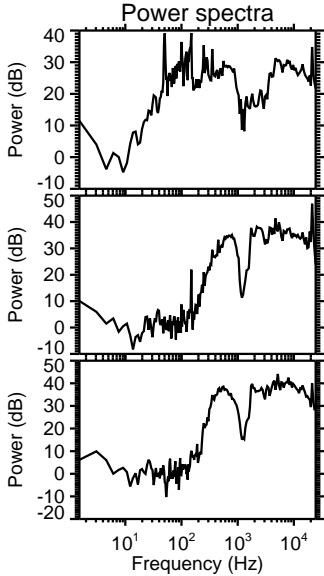
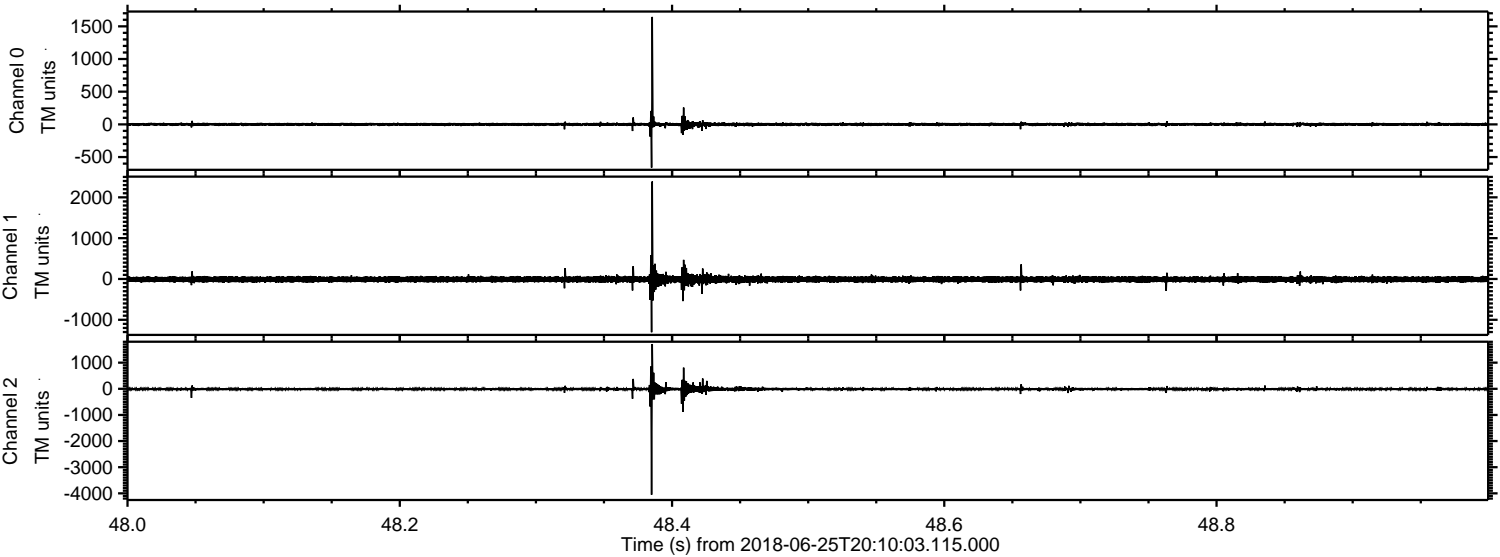


ELMAVAN 3D WAVEFORMS (Measured data sampled at 50 kHz) 51000 packets of 144 samples from 2018-06-25T20:10:03.115.000. Part 22/147

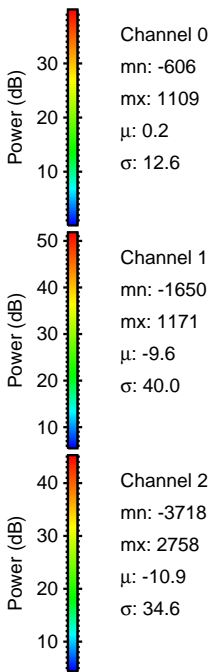
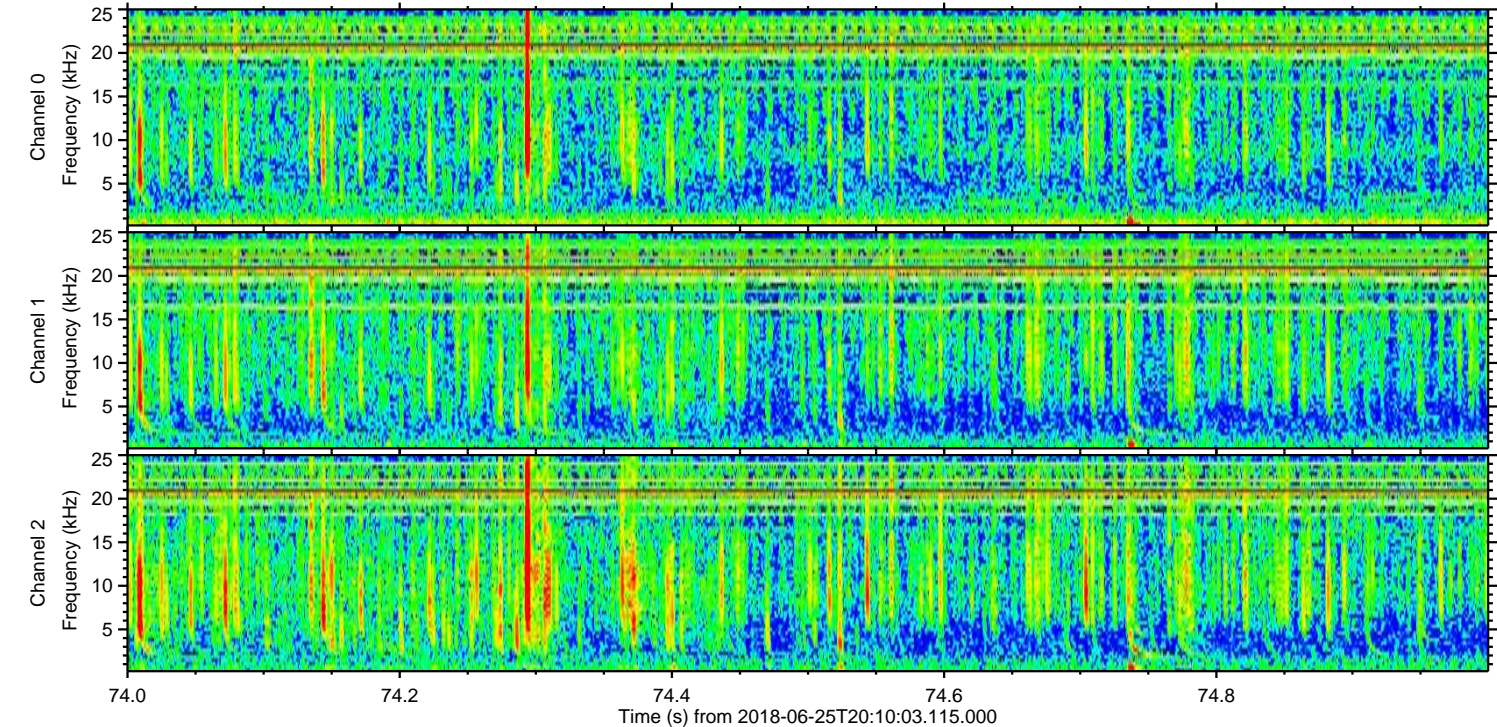
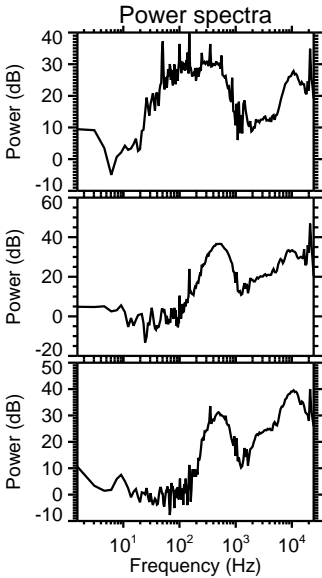
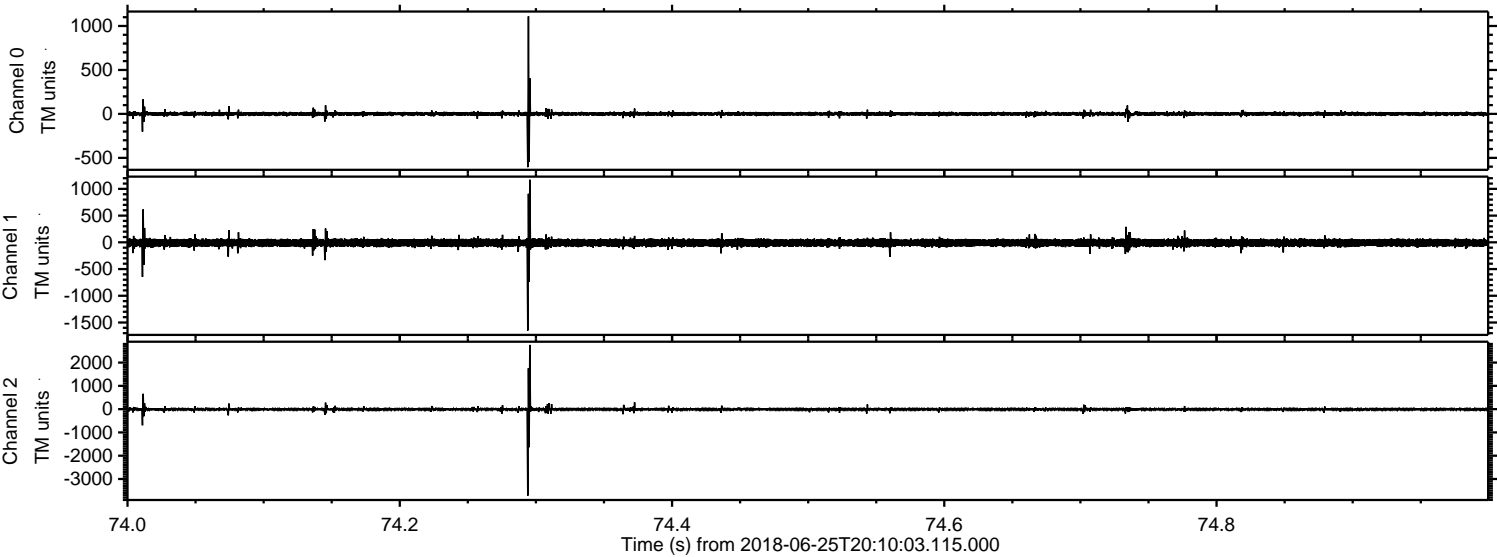
Processed Mon Jun 25 22:18:17 2018 by ELM ver.2012-10-06 from 001__elm20180625_201002__dat00.bin



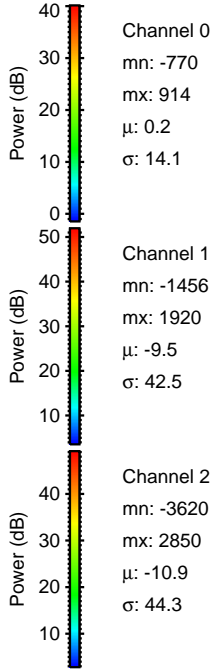
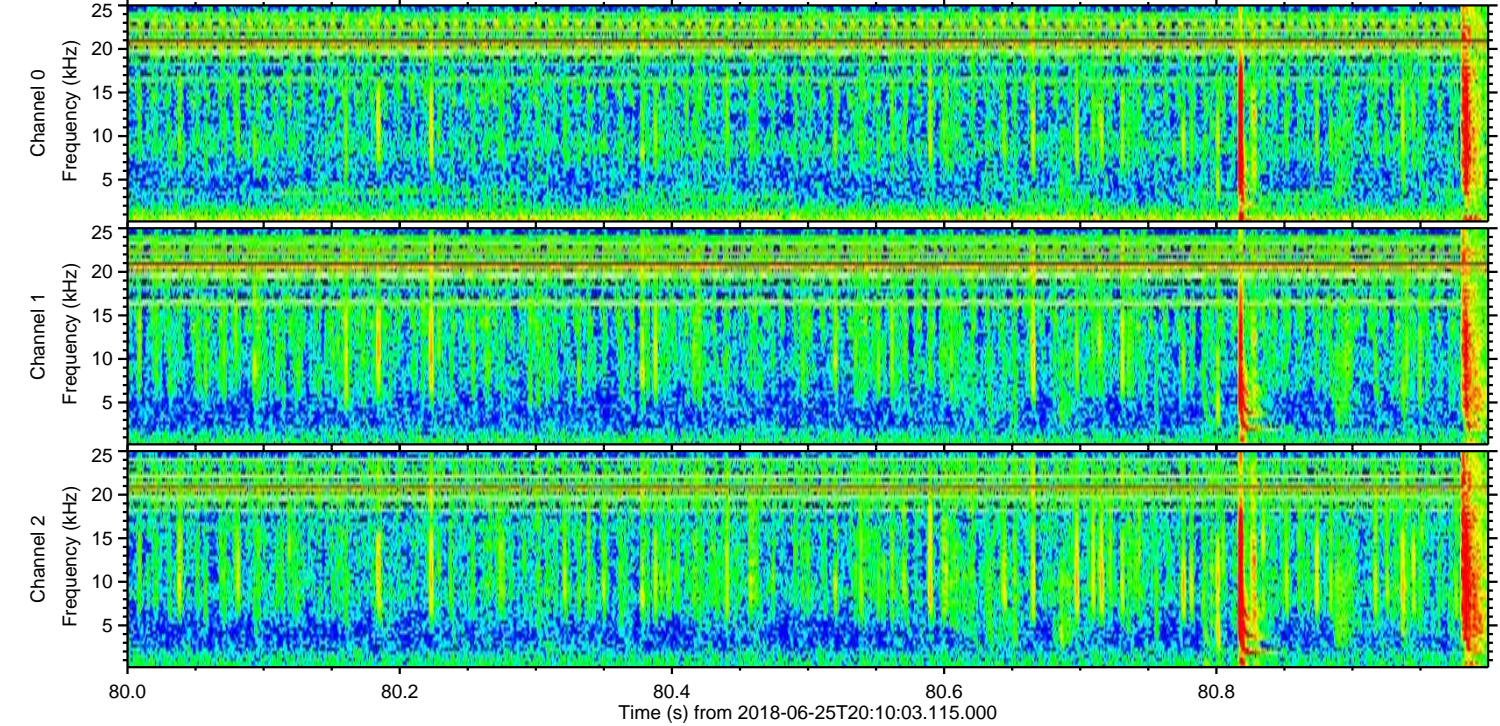
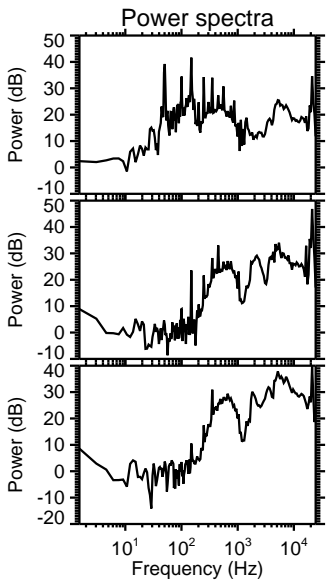
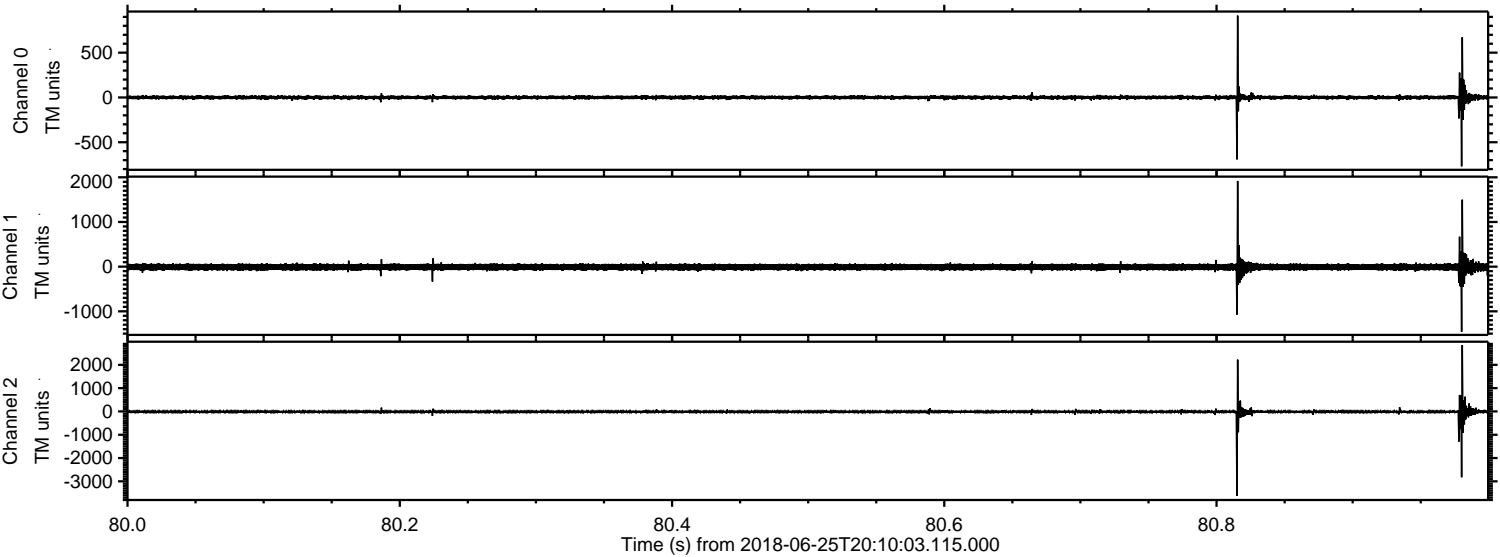
Processed Mon Jun 25 22:18:17 2018 by ELM ver.2012-10-06 from 001__elm20180625_201002__dat00.bin



Processed Mon Jun 25 22:18:18 2018 by ELM ver.2012-10-06 from 001__elm20180625_201002__dat00.bin

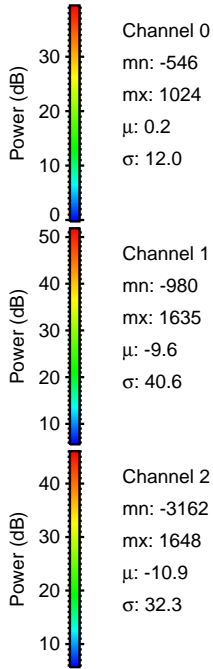
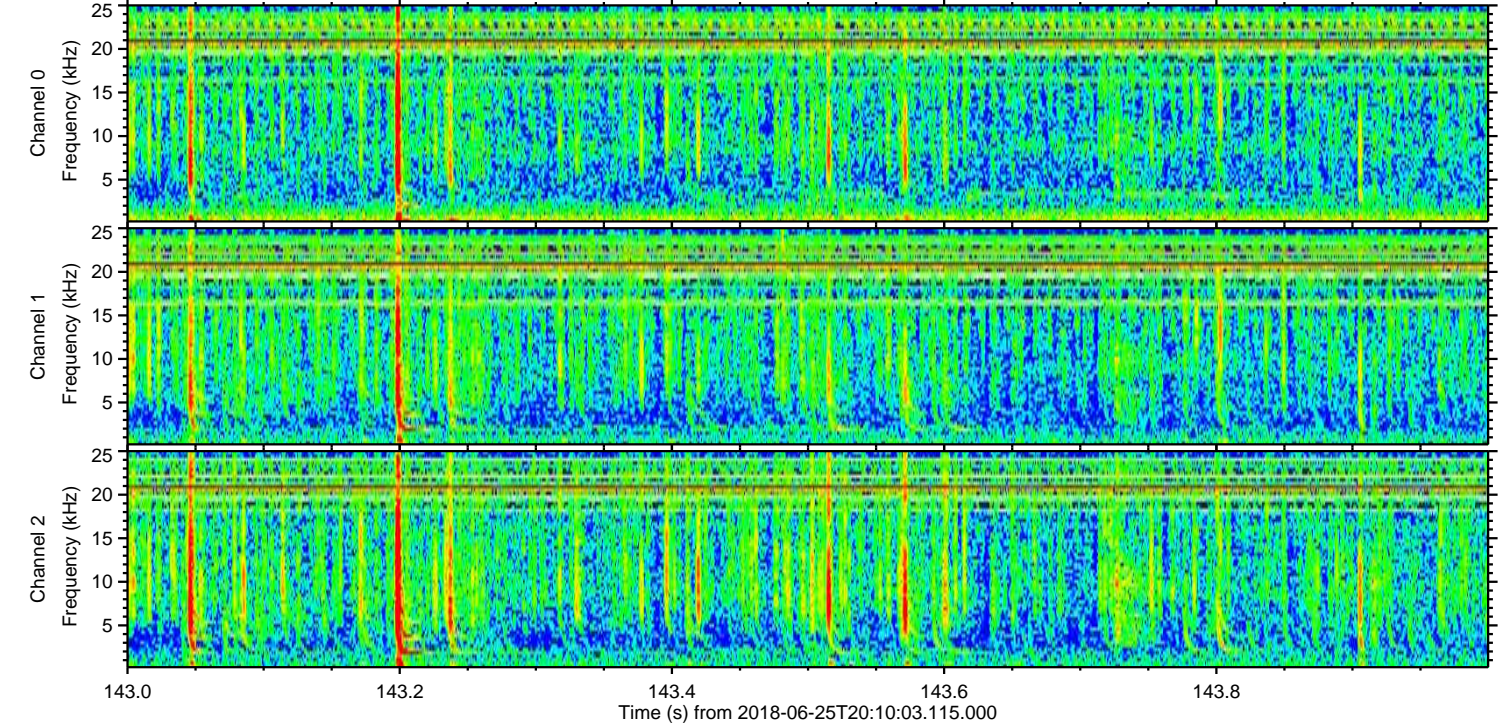
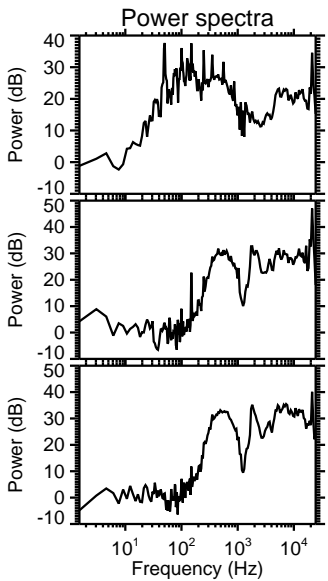
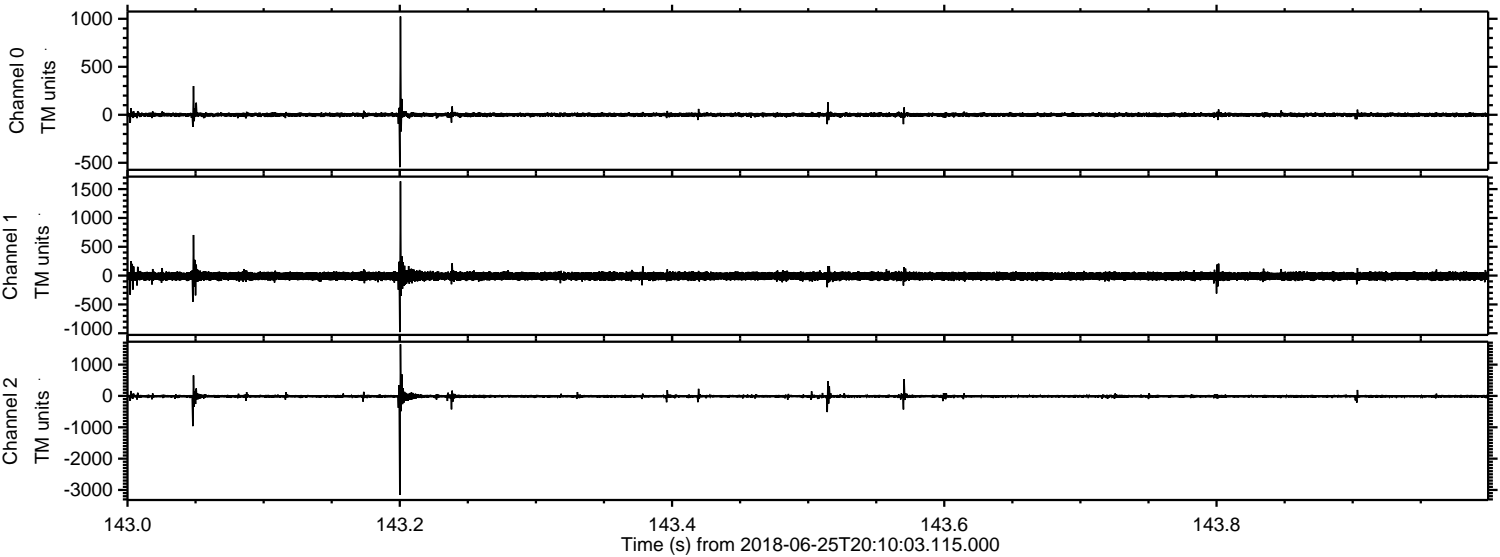


Processed Mon Jun 25 22:18:19 2018 by ELM ver.2012-10-06 from 001__elm20180625_201002__dat00.bin

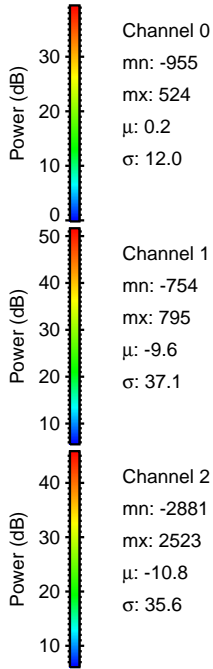
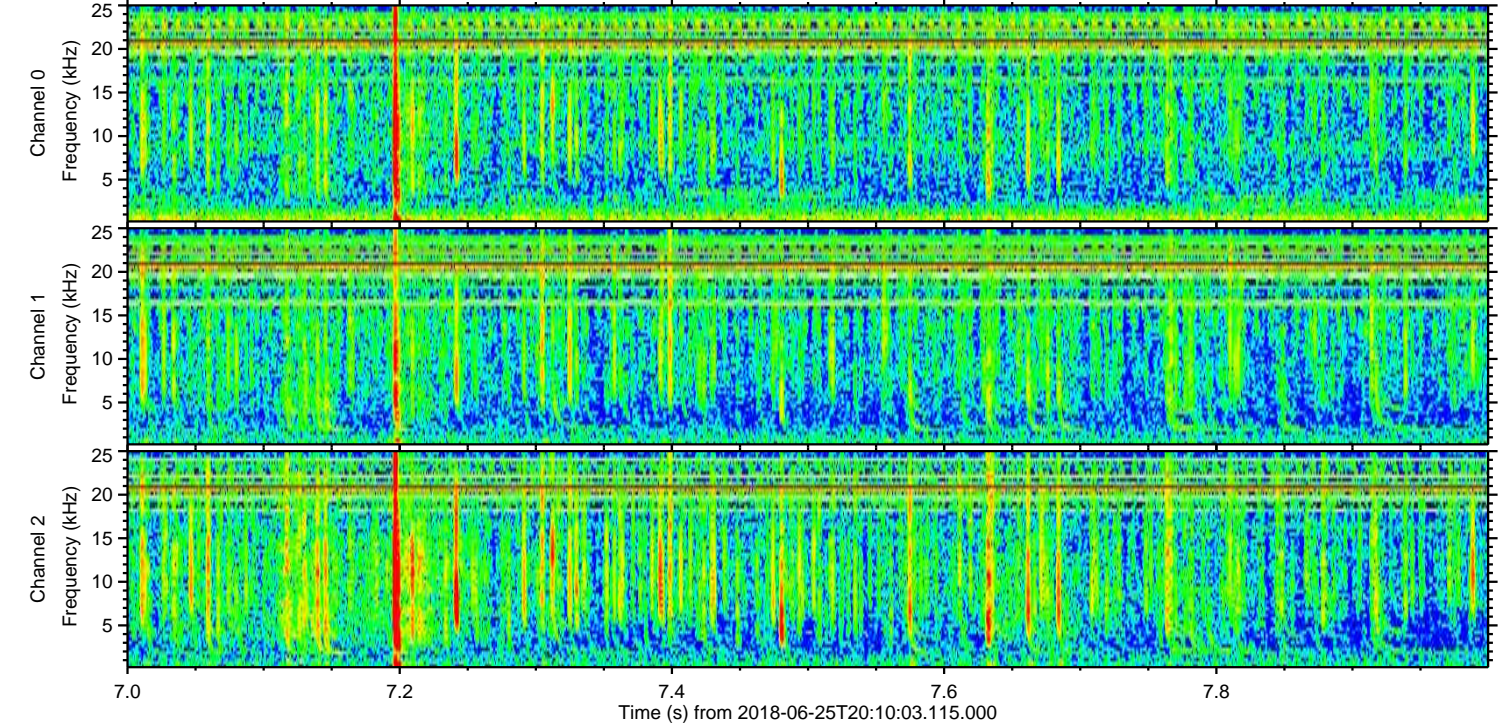
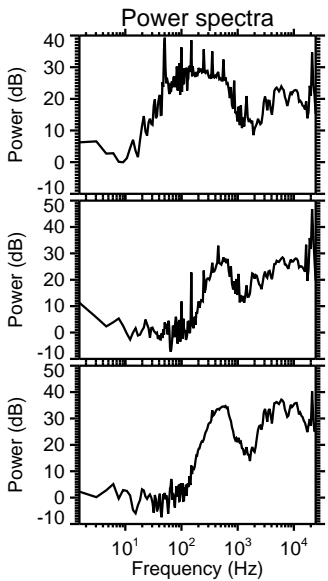
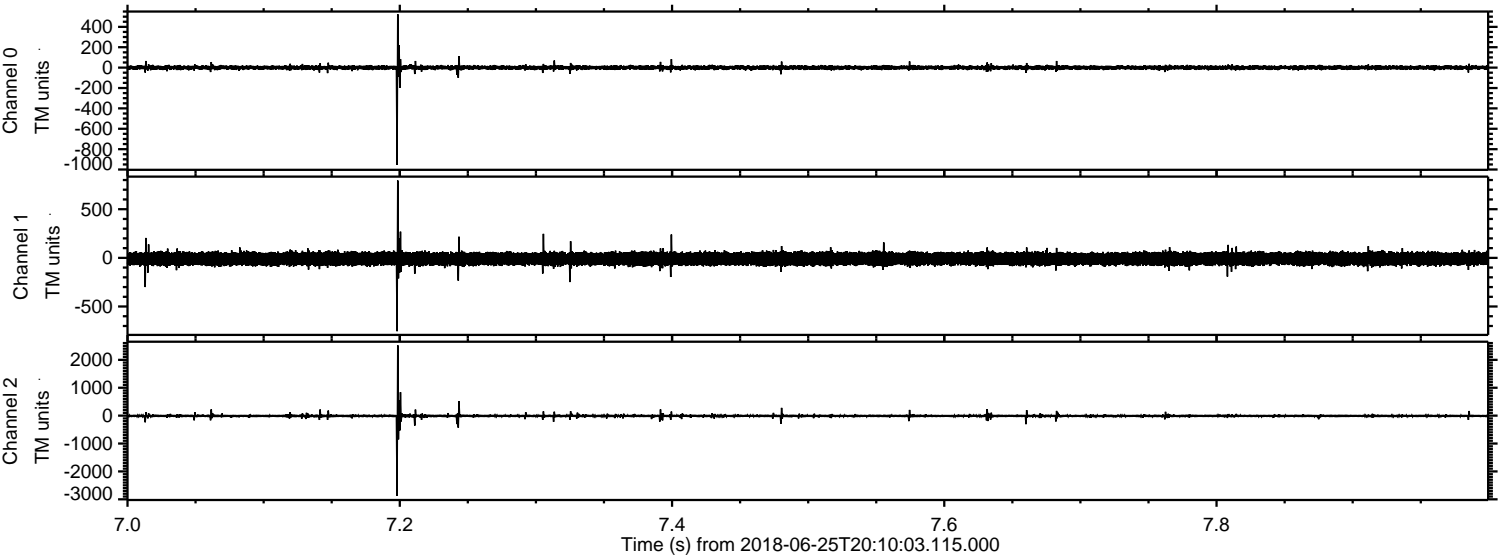


ELMAVAN 3D WAVEFORMS (Measured data sampled at 50 kHz) 51000 packets of 144 samples from 2018-06-25T20:10:03.115.000. Part 144/147

Processed Mon Jun 25 22:18:20 2018 by ELM ver.2012-10-06 from 001__elm20180625_201002__dat00.bin



Processed Mon Jun 25 22:18:21 2018 by ELM ver.2012-10-06 from 001__elm20180625_201002__dat00.bin



Channel 0
mn: -955
mx: 524
 μ : 0.2
 σ : 12.0

Channel 1
mn: -754
mx: 795
 μ : -9.6
 σ : 37.1

Channel 2
mn: -2881
mx: 2523
 μ : -10.8
 σ : 35.6

Processed Mon Jun 25 22:18:22 2018 by ELM ver.2012-10-06 from 001__elm20180625_201002__dat00.bin

