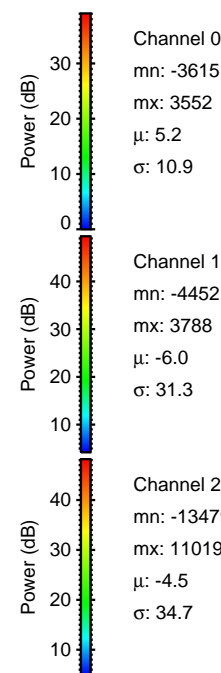
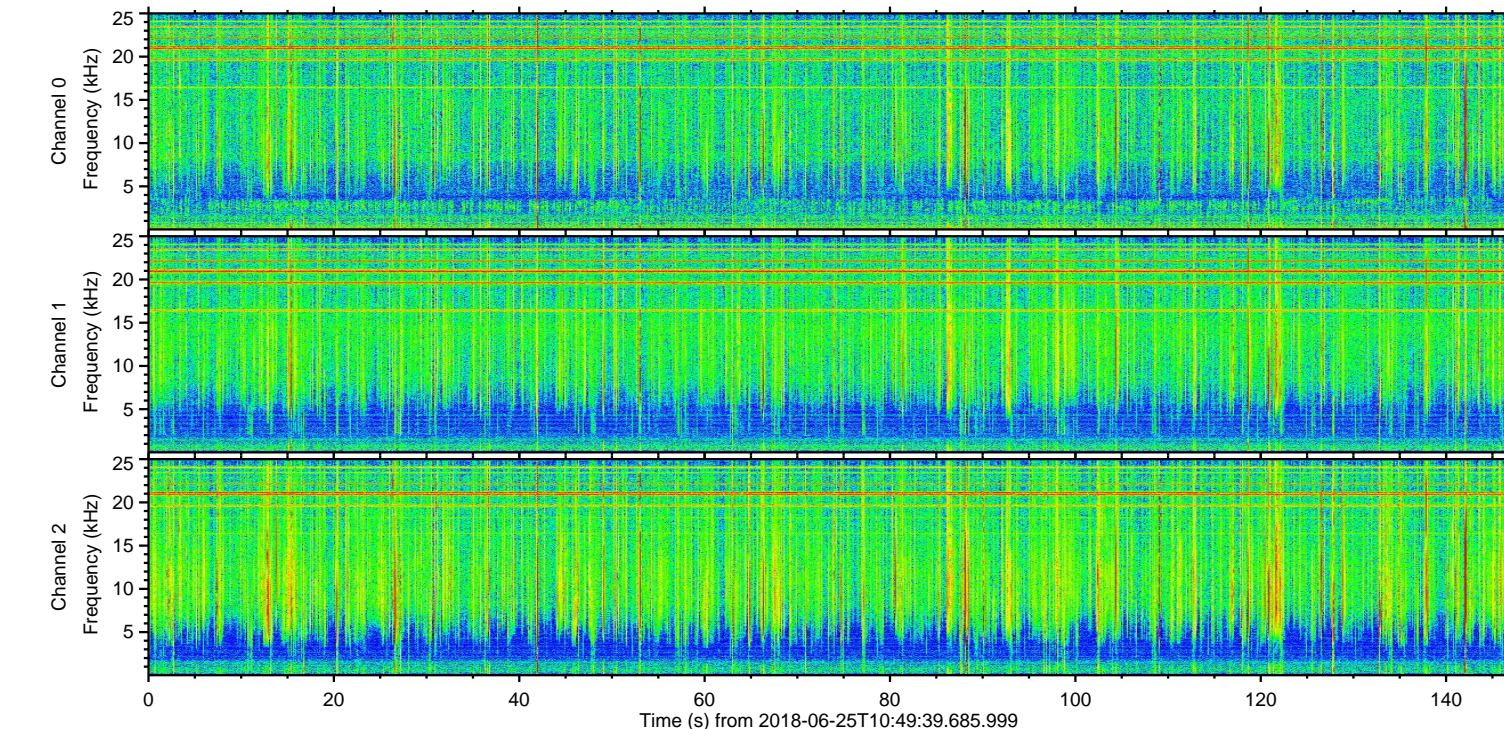
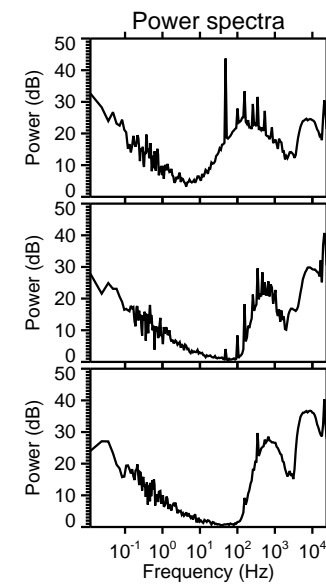
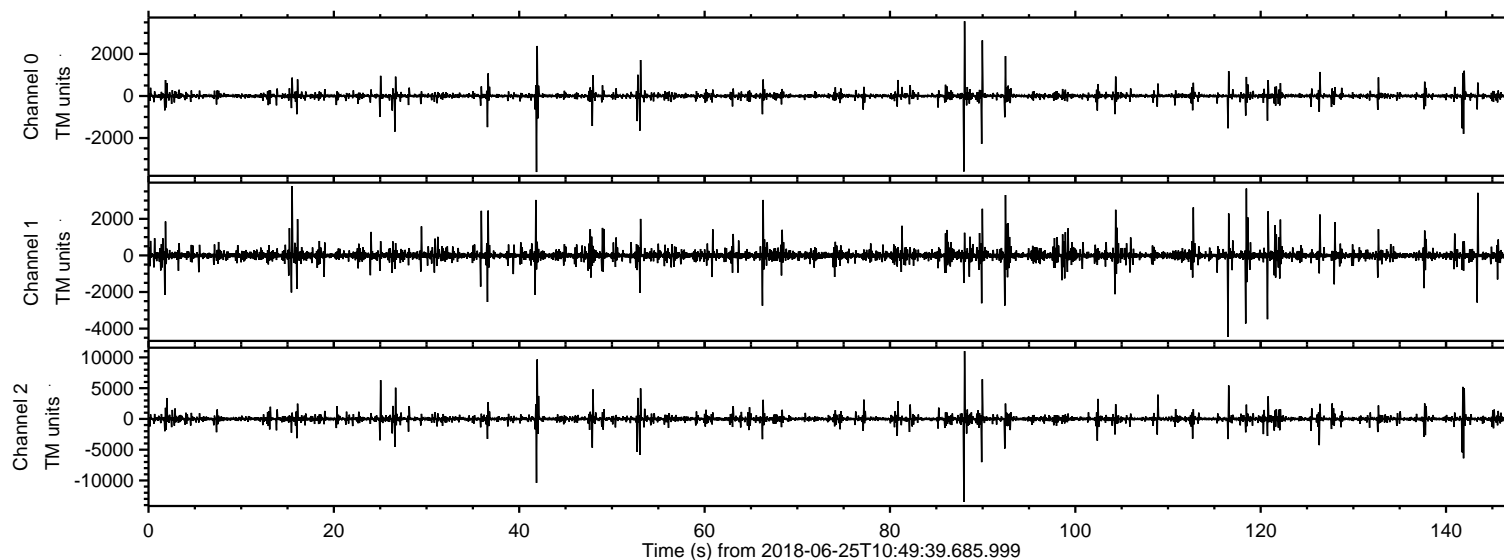
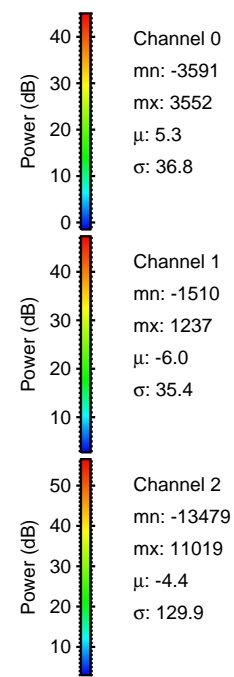
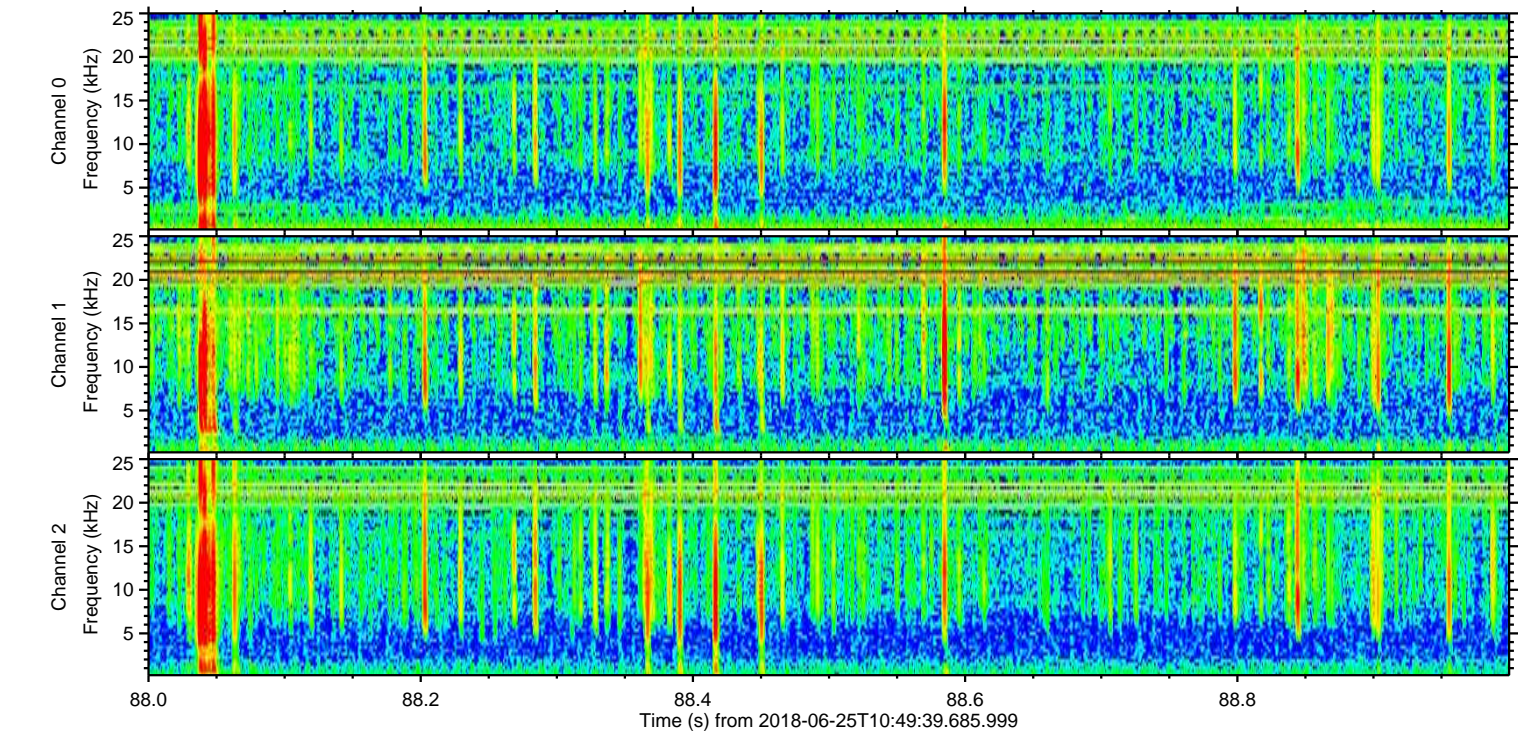
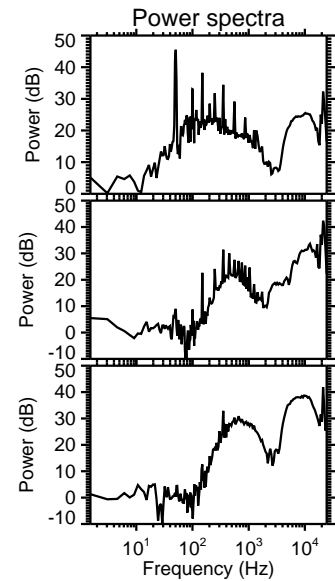
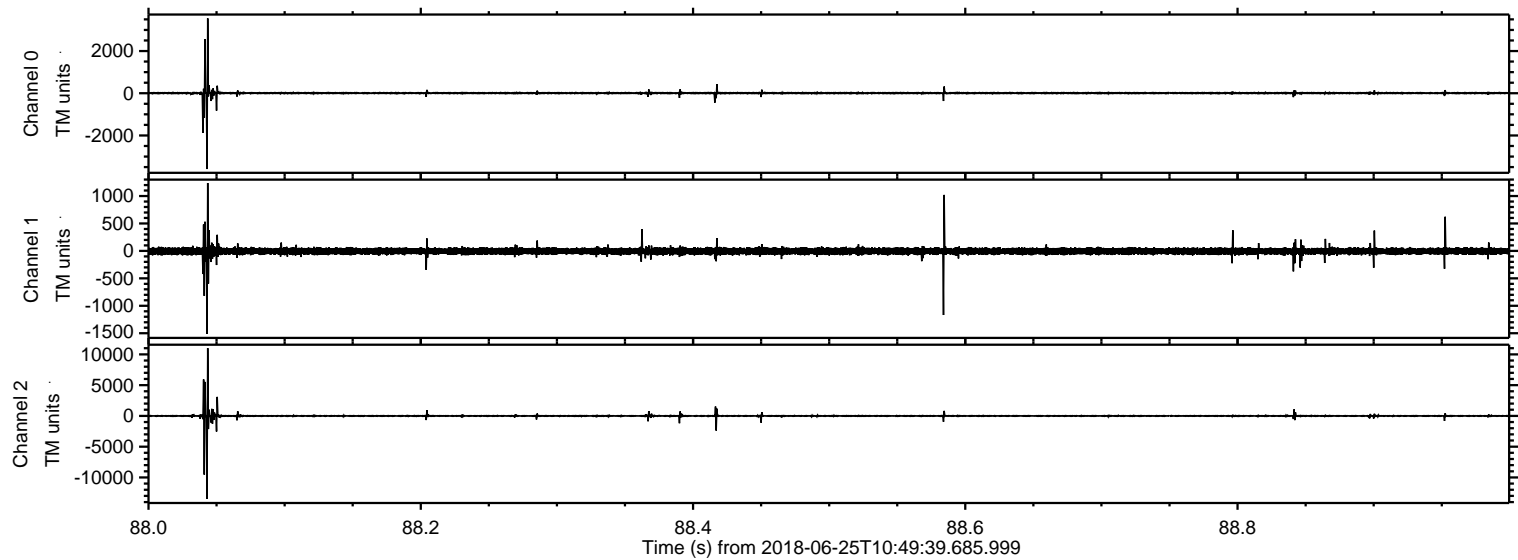


ELMAVAN 3D WAVEFORMS (Measured data sampled at 50 kHz) 51000 packets of 144 samples from 2018-06-25T10:49:39.685.999.

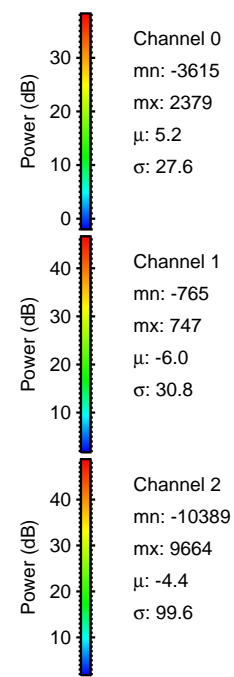
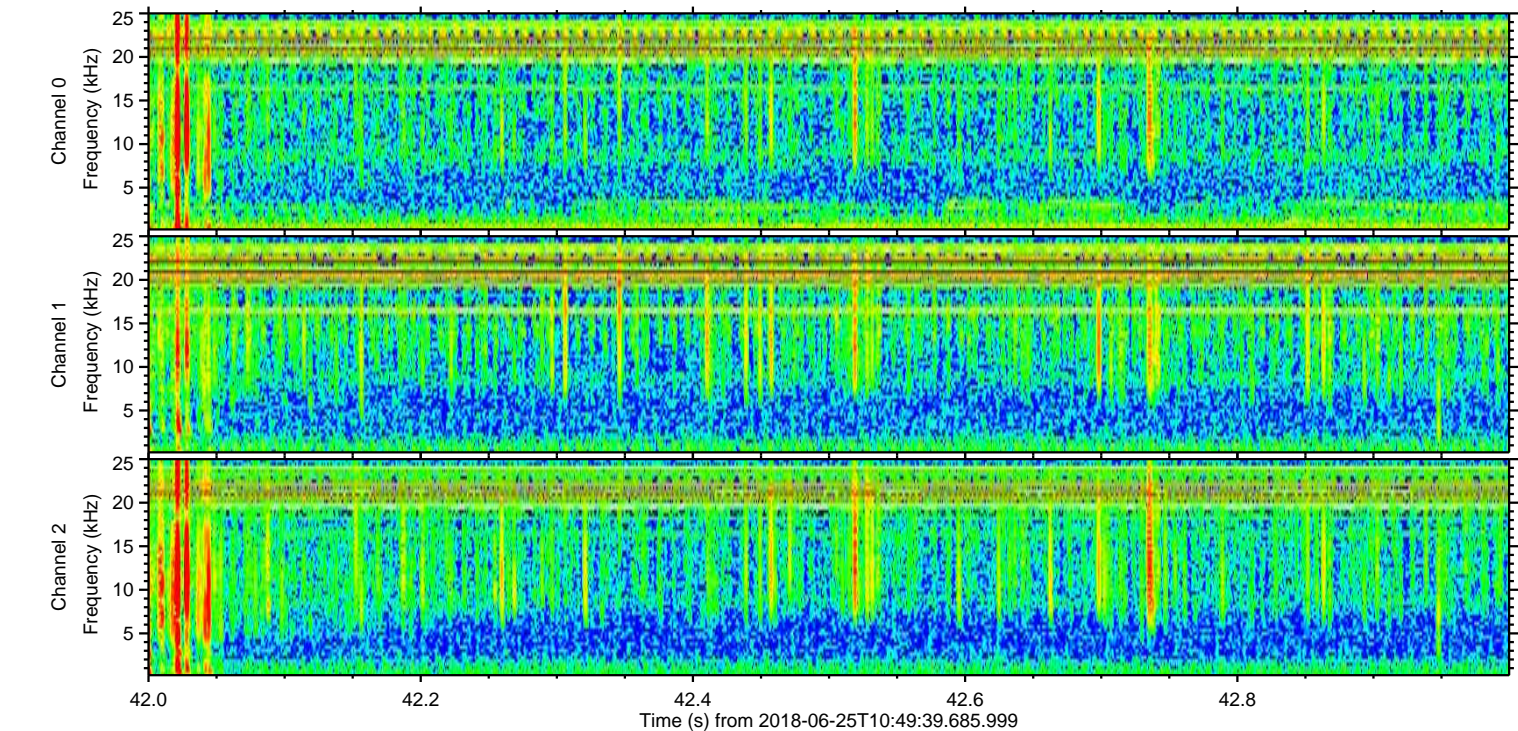
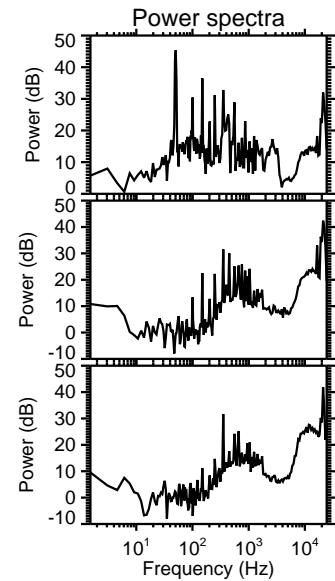
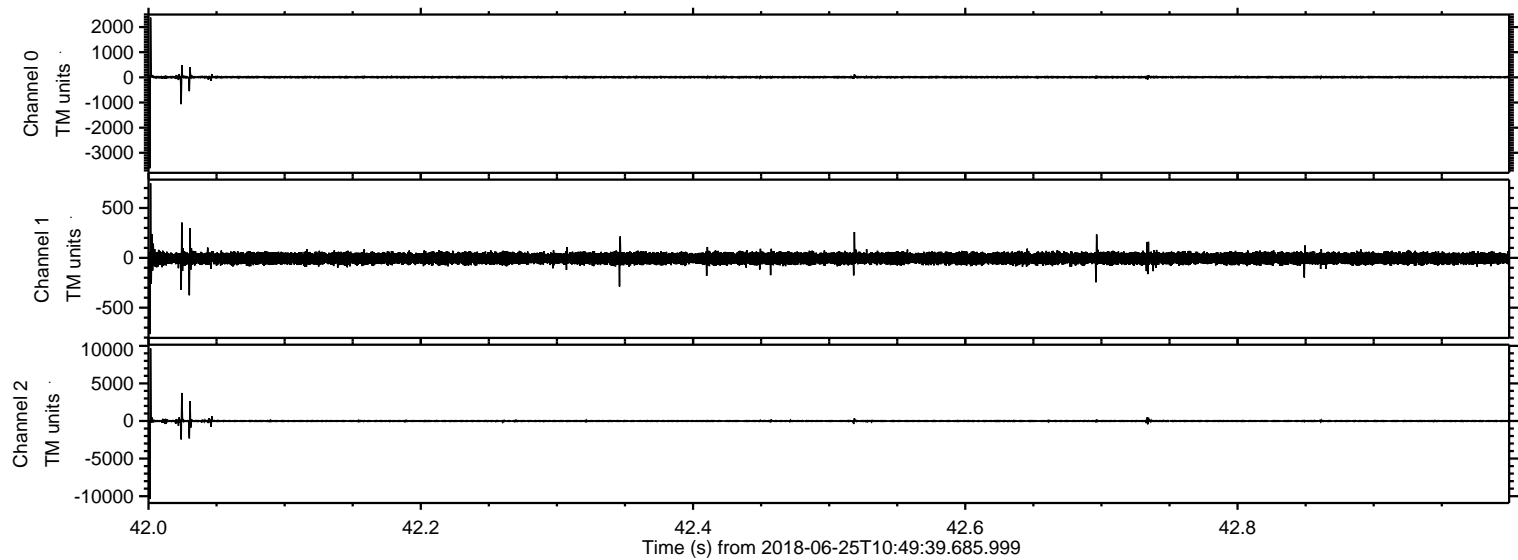
Processed Mon Jun 25 12:57:59 2018 by ELM ver.2012-10-06 from 001__elm20180625_104938__dat00.bin



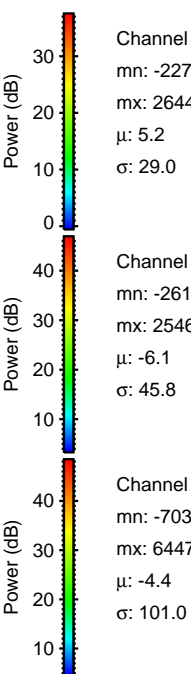
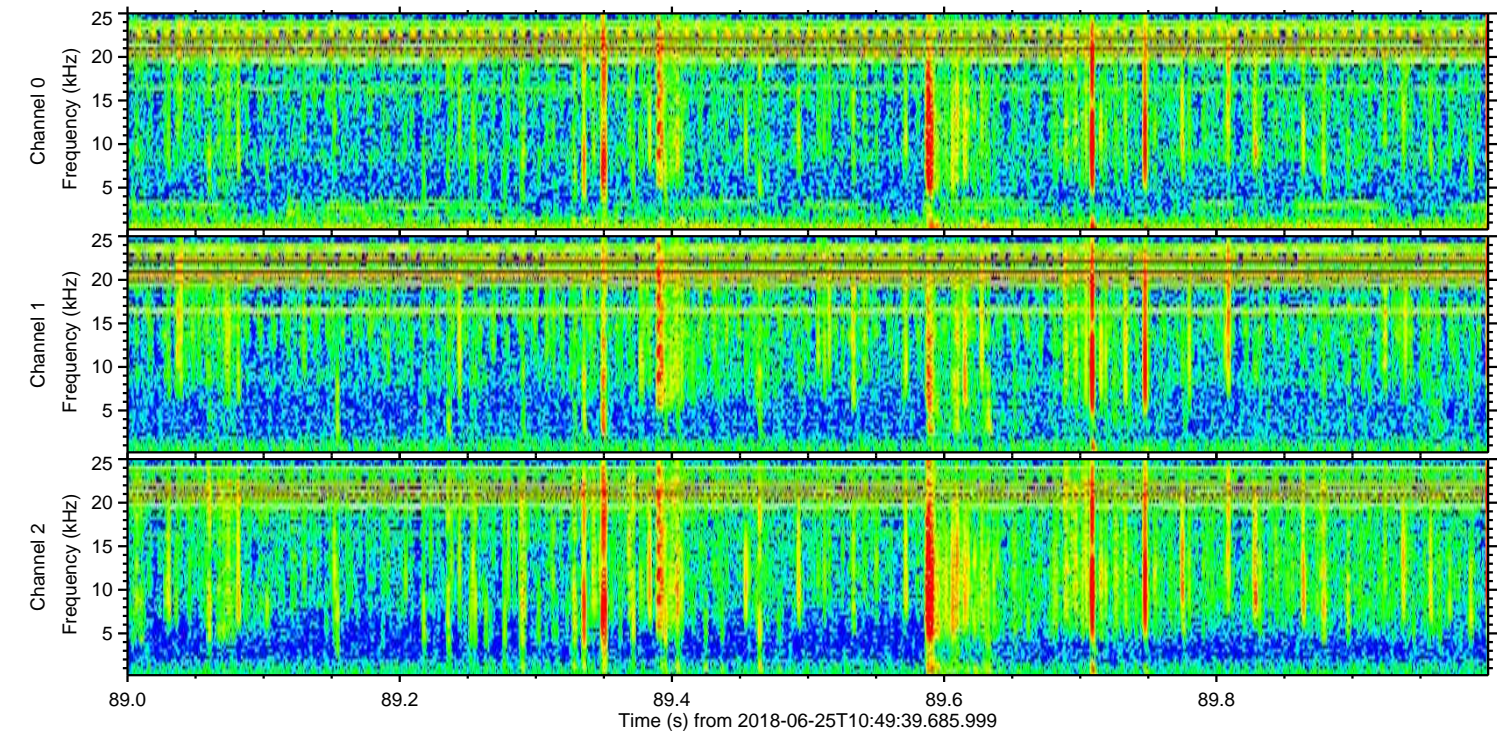
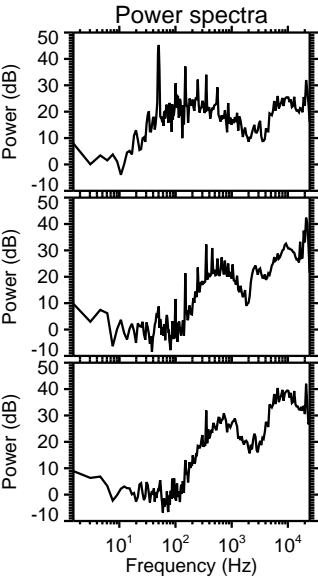
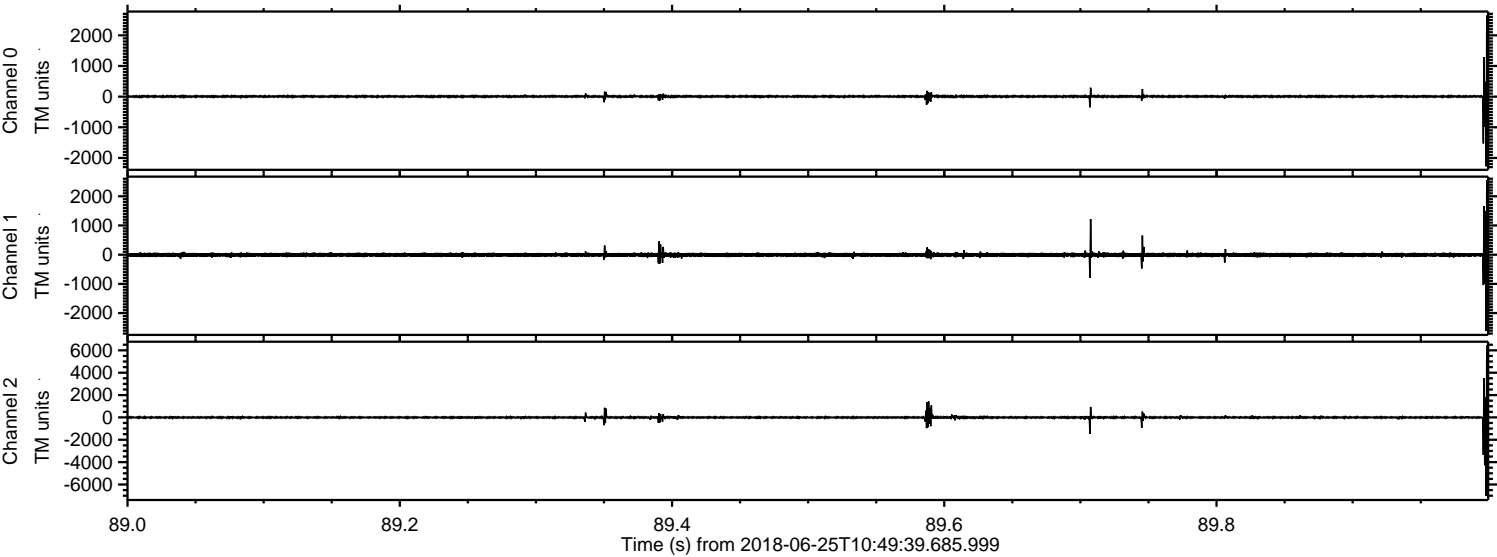
Processed Mon Jun 25 12:58:05 2018 by ELM ver.2012-10-06 from 001__elm20180625_104938__dat00.bin



Processed Mon Jun 25 12:58:06 2018 by ELM ver.2012-10-06 from 001__elm20180625_104938__dat00.bin



Processed Mon Jun 25 12:58:06 2018 by ELM ver.2012-10-06 from 001__elm20180625_104938__dat00.bin



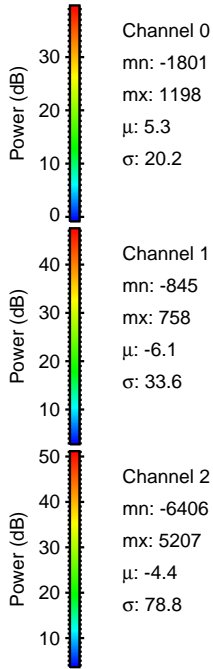
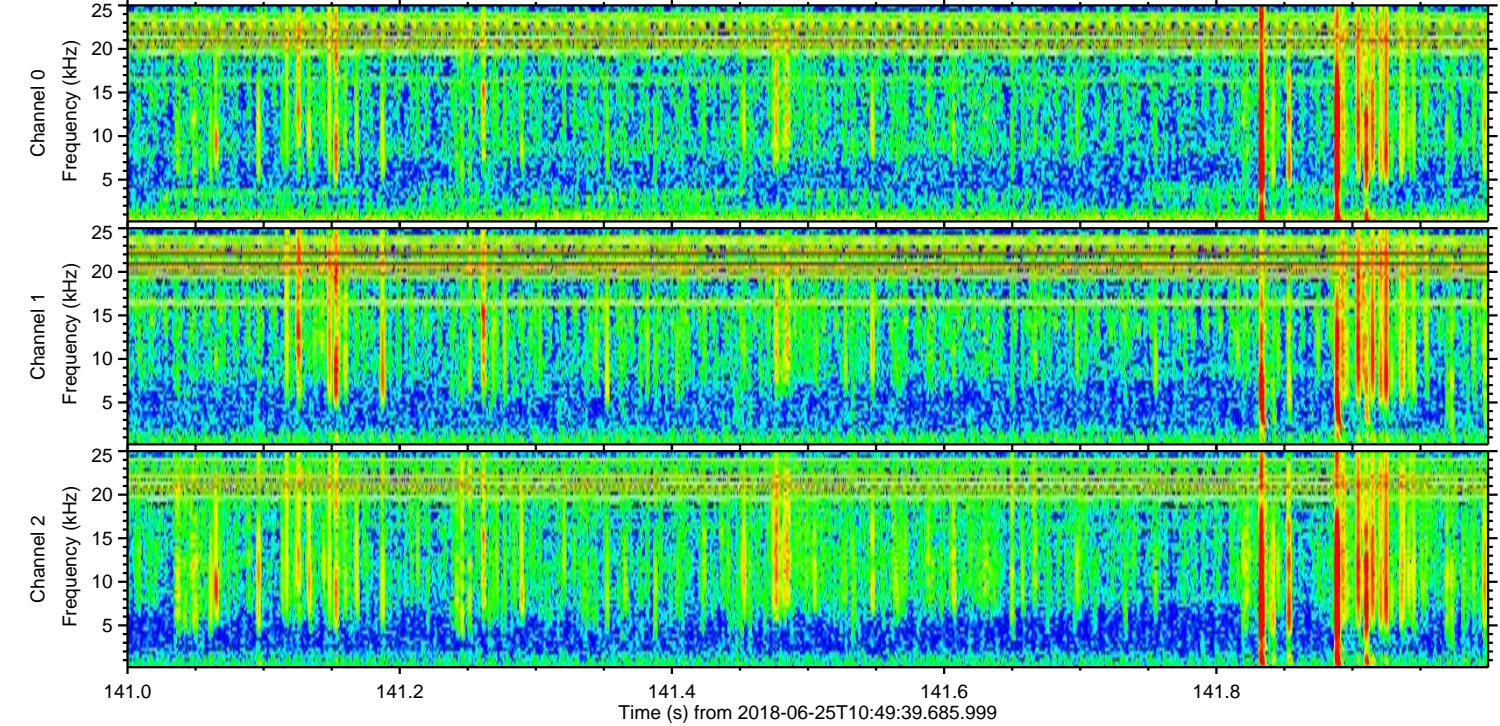
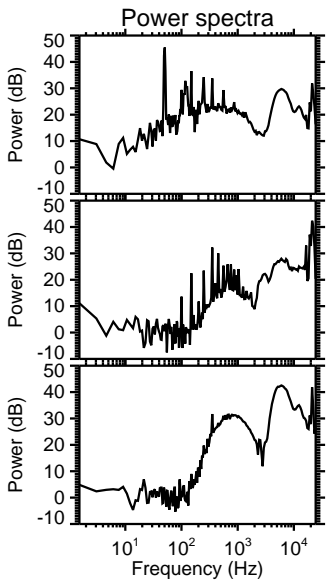
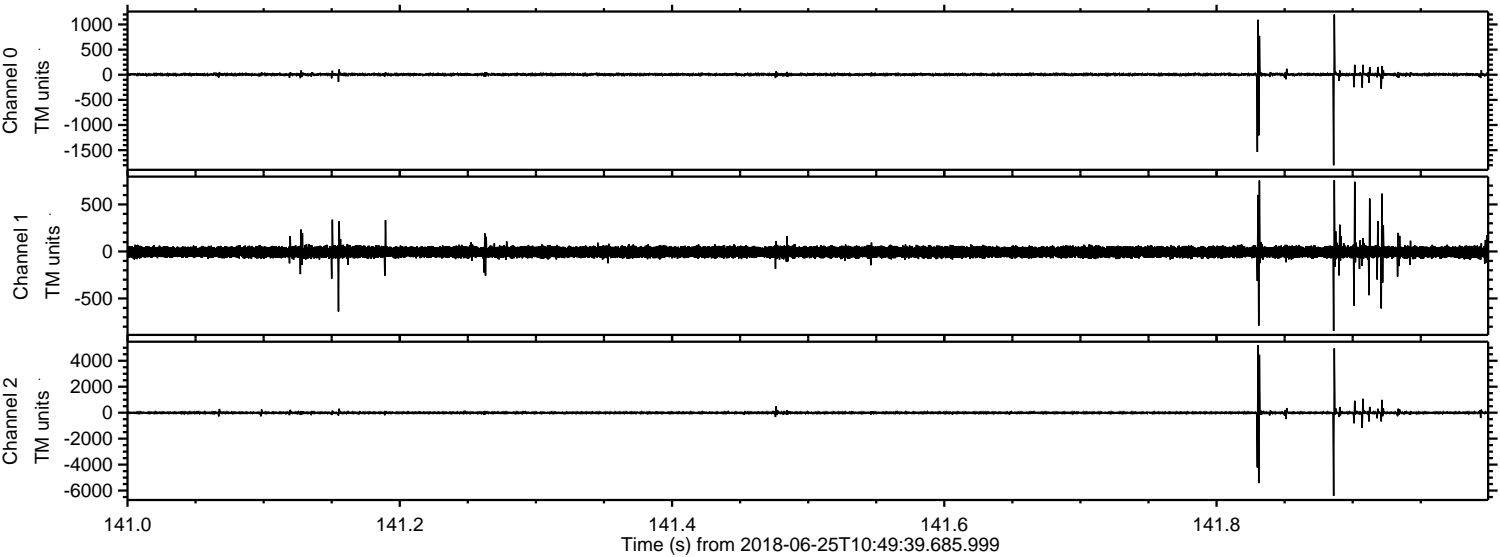
Channel 0
mn: -2274
mx: 2644
 μ : 5.2
 σ : 29.0

Channel 1
mn: -2616
mx: 2546
 μ : -6.1
 σ : 45.8

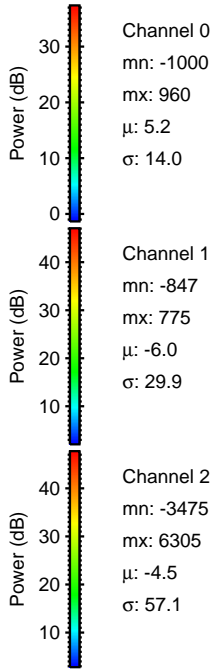
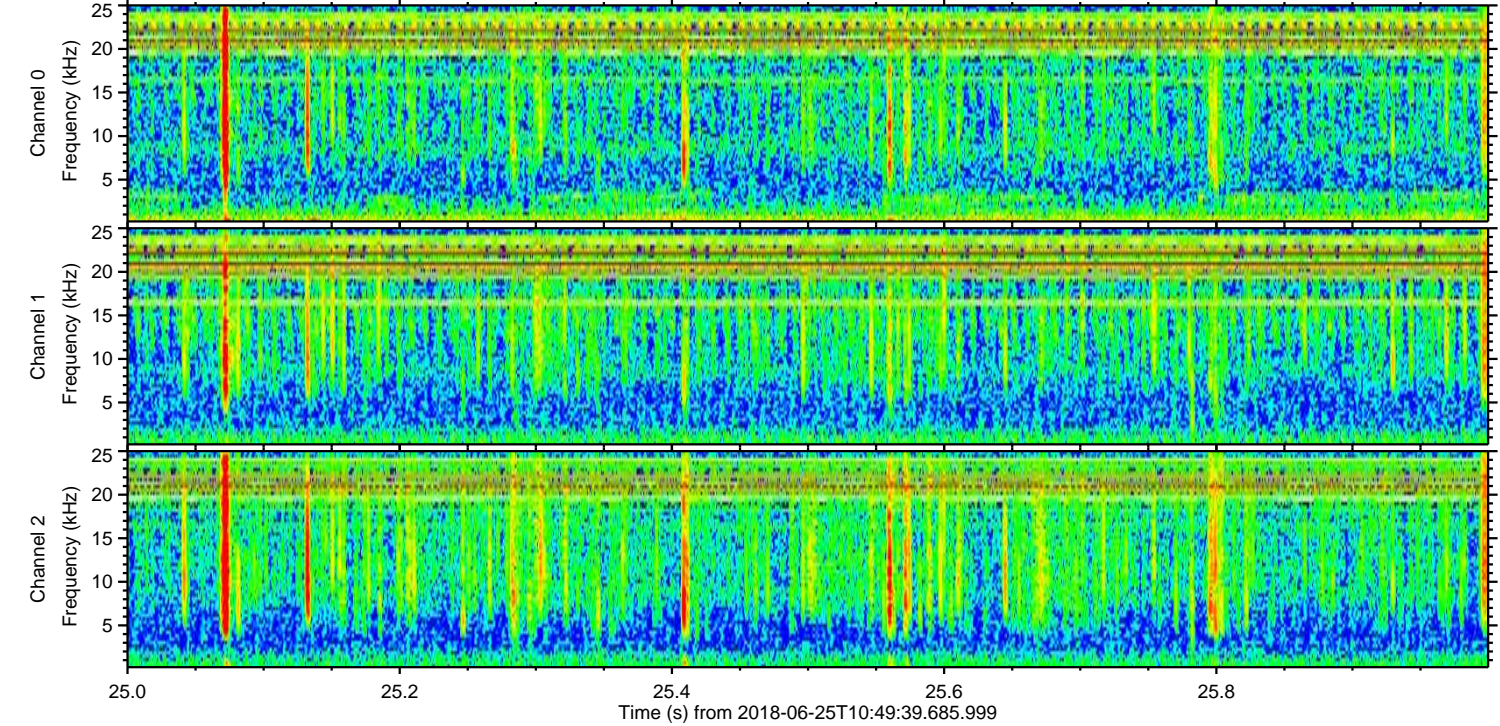
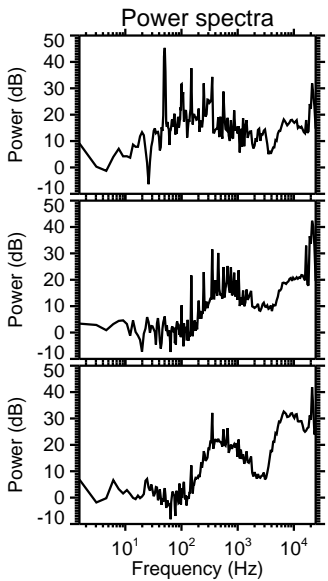
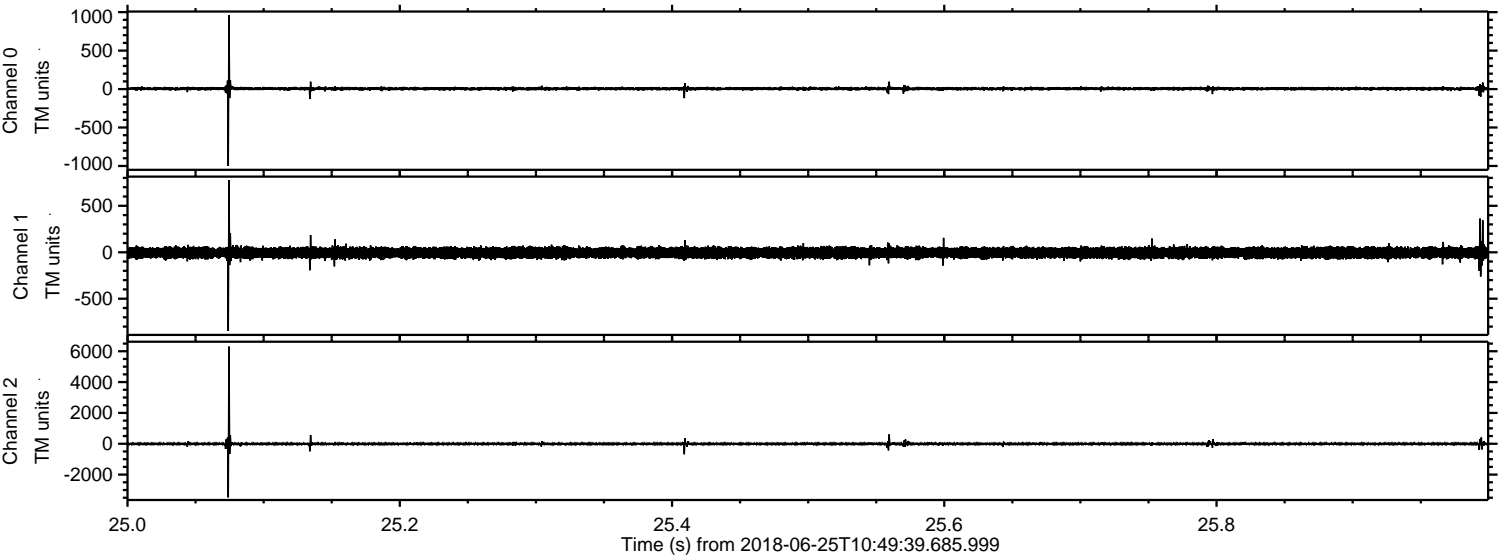
Channel 2
mn: -7033
mx: 6447
 μ : -4.4
 σ : 101.0

ELMAVAN 3D WAVEFORMS (Measured data sampled at 50 kHz) 51000 packets of 144 samples from 2018-06-25T10:49:39.685.999. Part 142/147

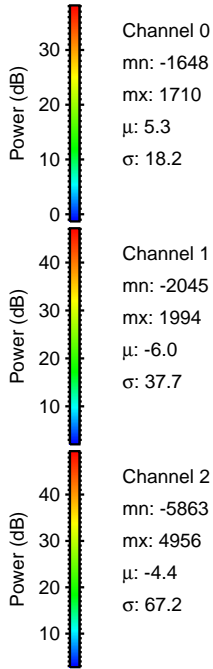
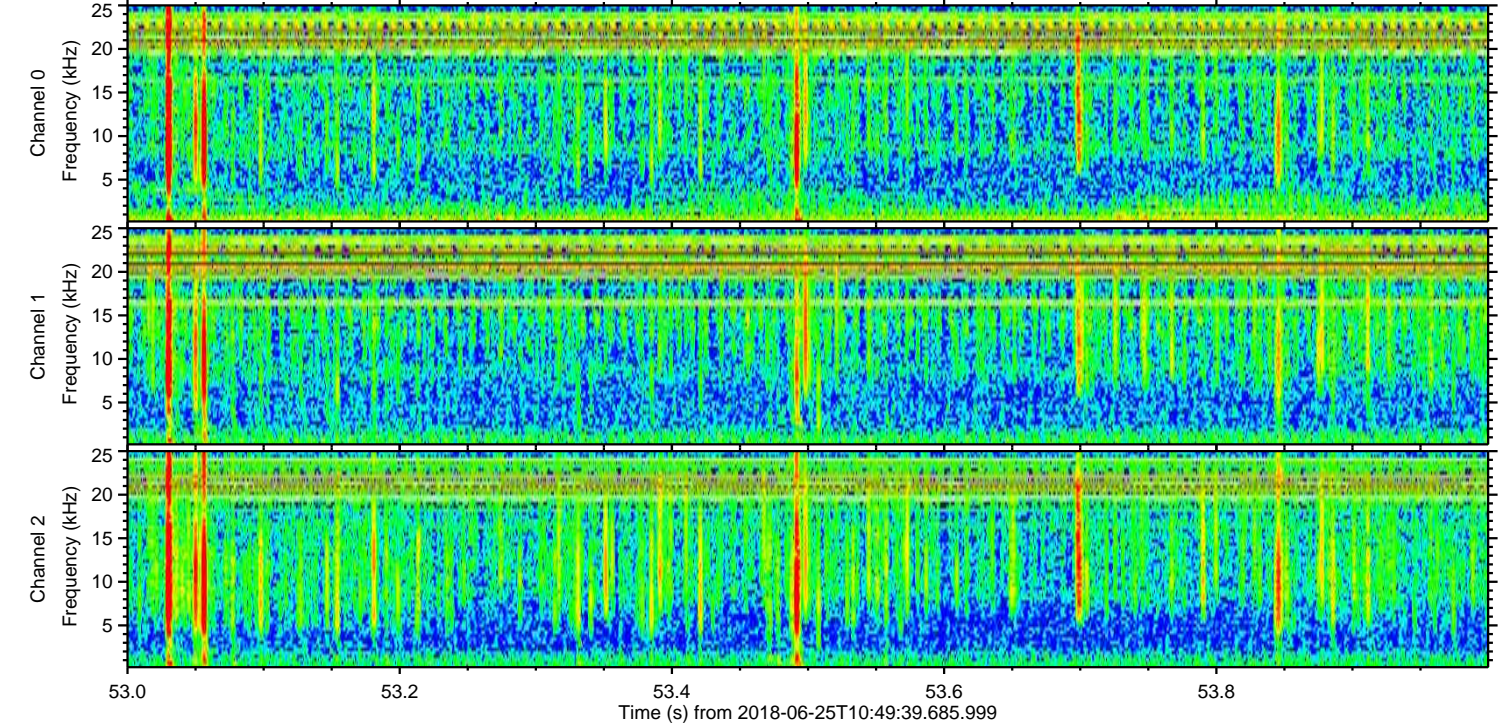
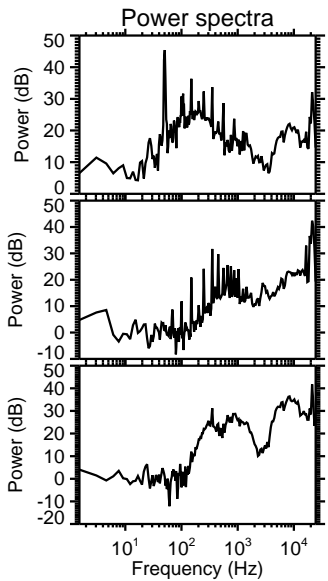
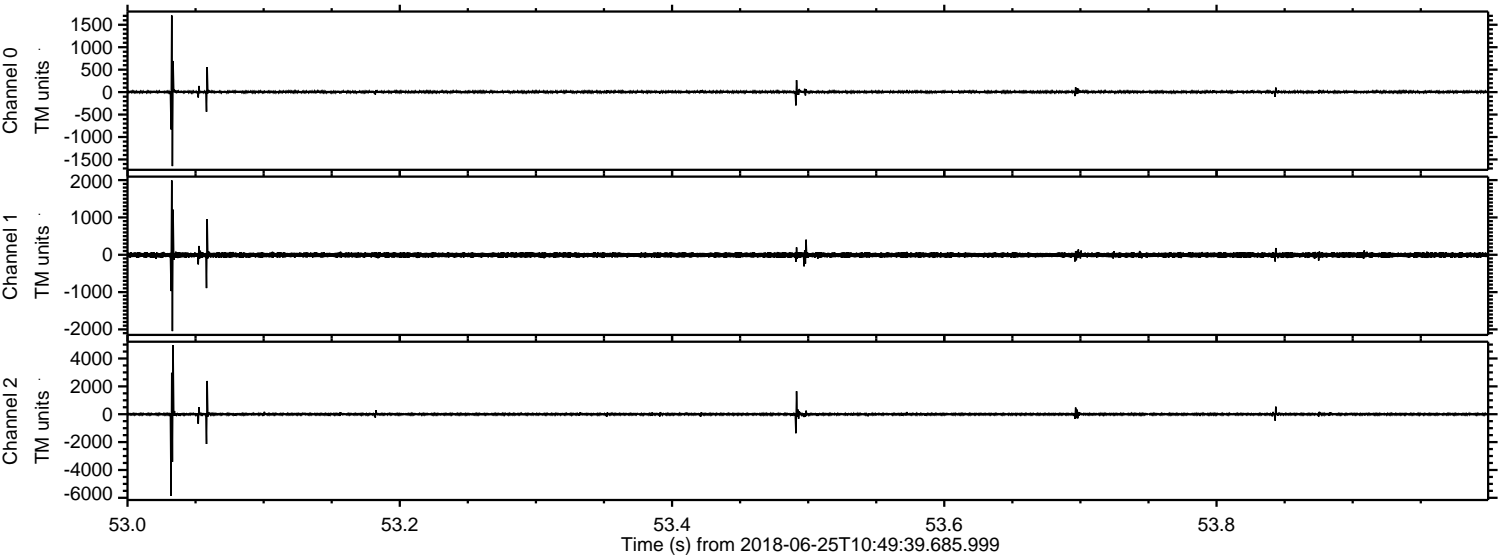
Processed Mon Jun 25 12:58:07 2018 by ELM ver.2012-10-06 from 001__elm20180625_104938__dat00.bin



Processed Mon Jun 25 12:58:08 2018 by ELM ver.2012-10-06 from 001__elm20180625_104938__dat00.bin

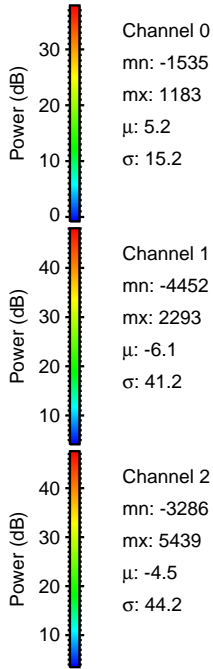
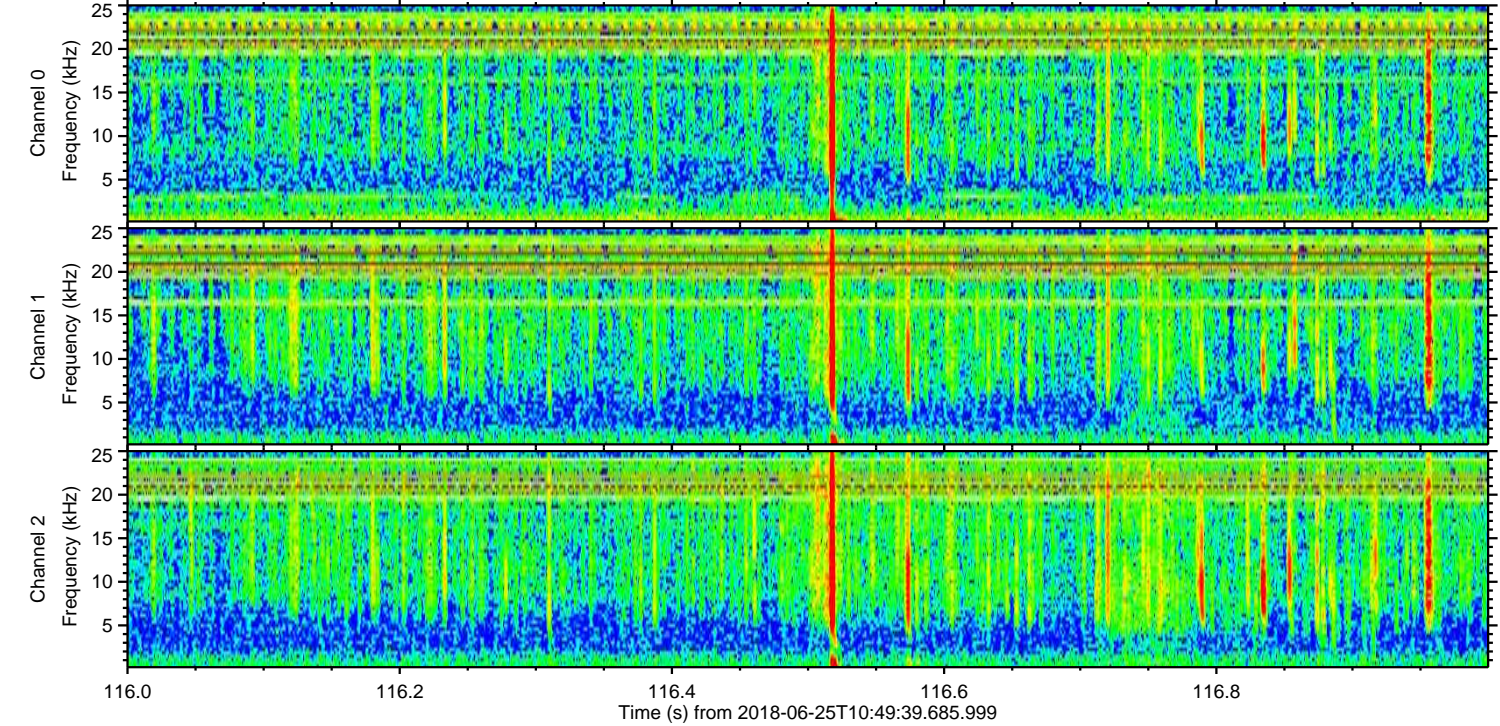
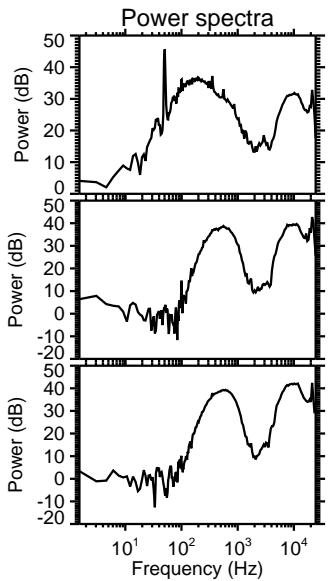
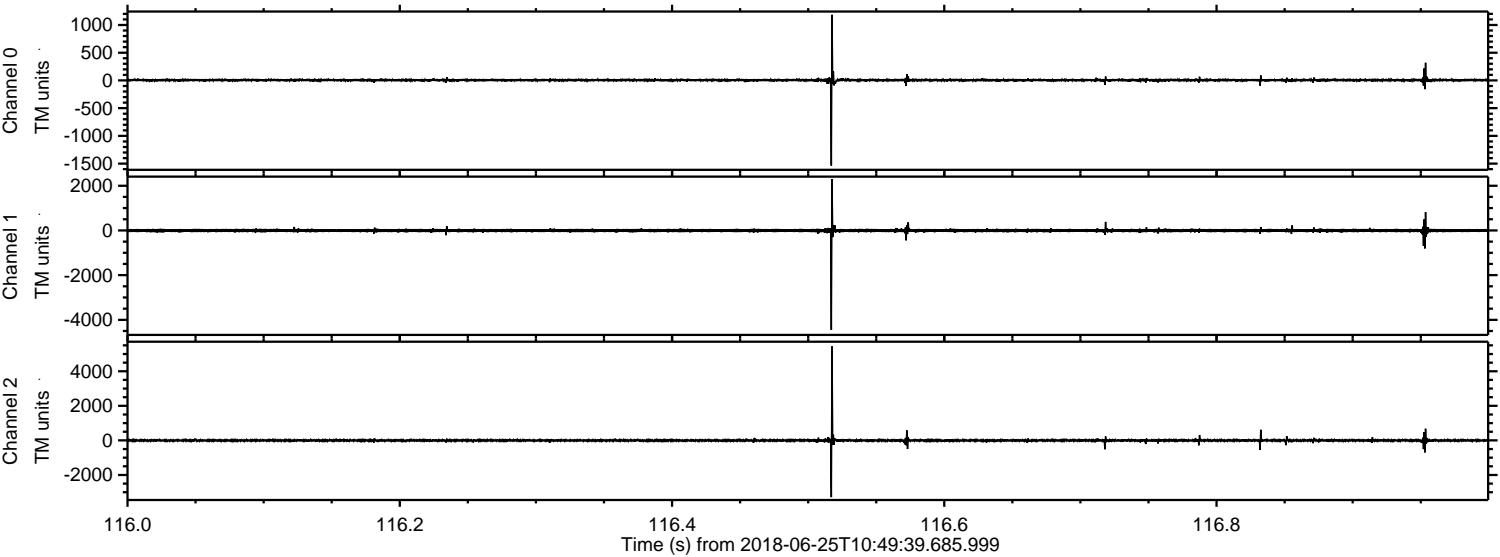


Processed Mon Jun 25 12:58:08 2018 by ELM ver.2012-10-06 from 001__elm20180625_104938__dat00.bin

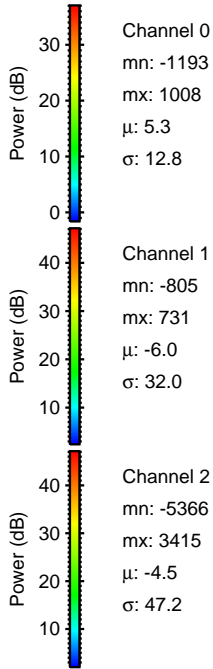
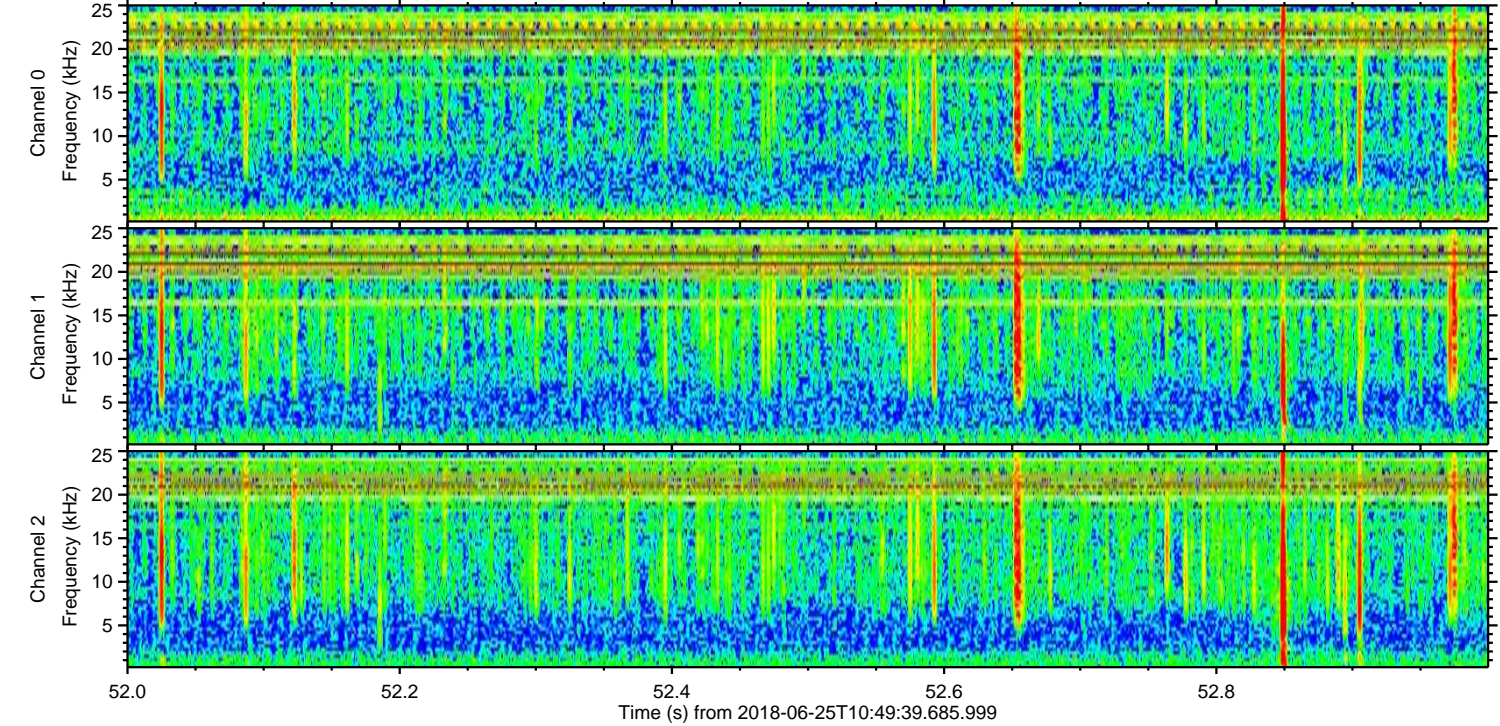
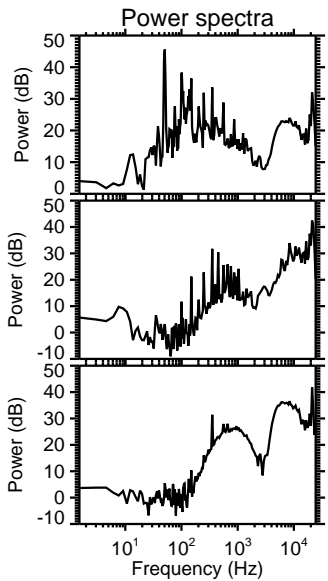
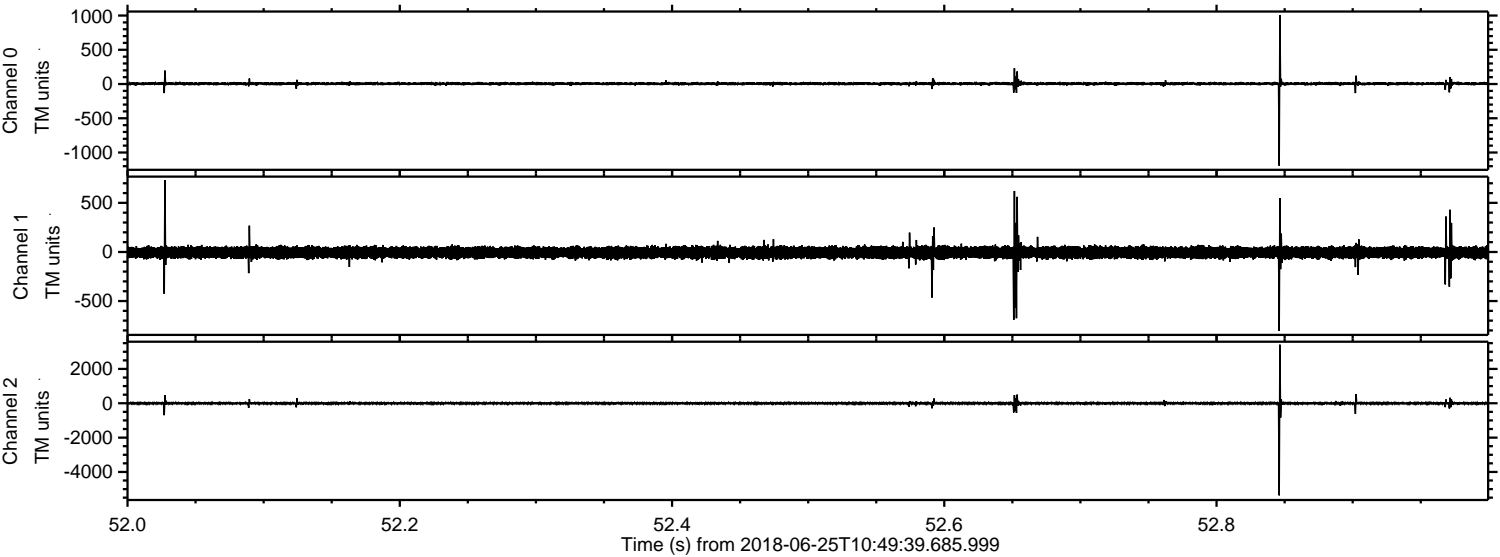


ELMAVAN 3D WAVEFORMS (Measured data sampled at 50 kHz) 51000 packets of 144 samples from 2018-06-25T10:49:39.685.999. Part 117/147

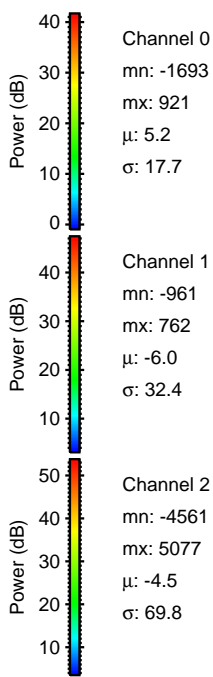
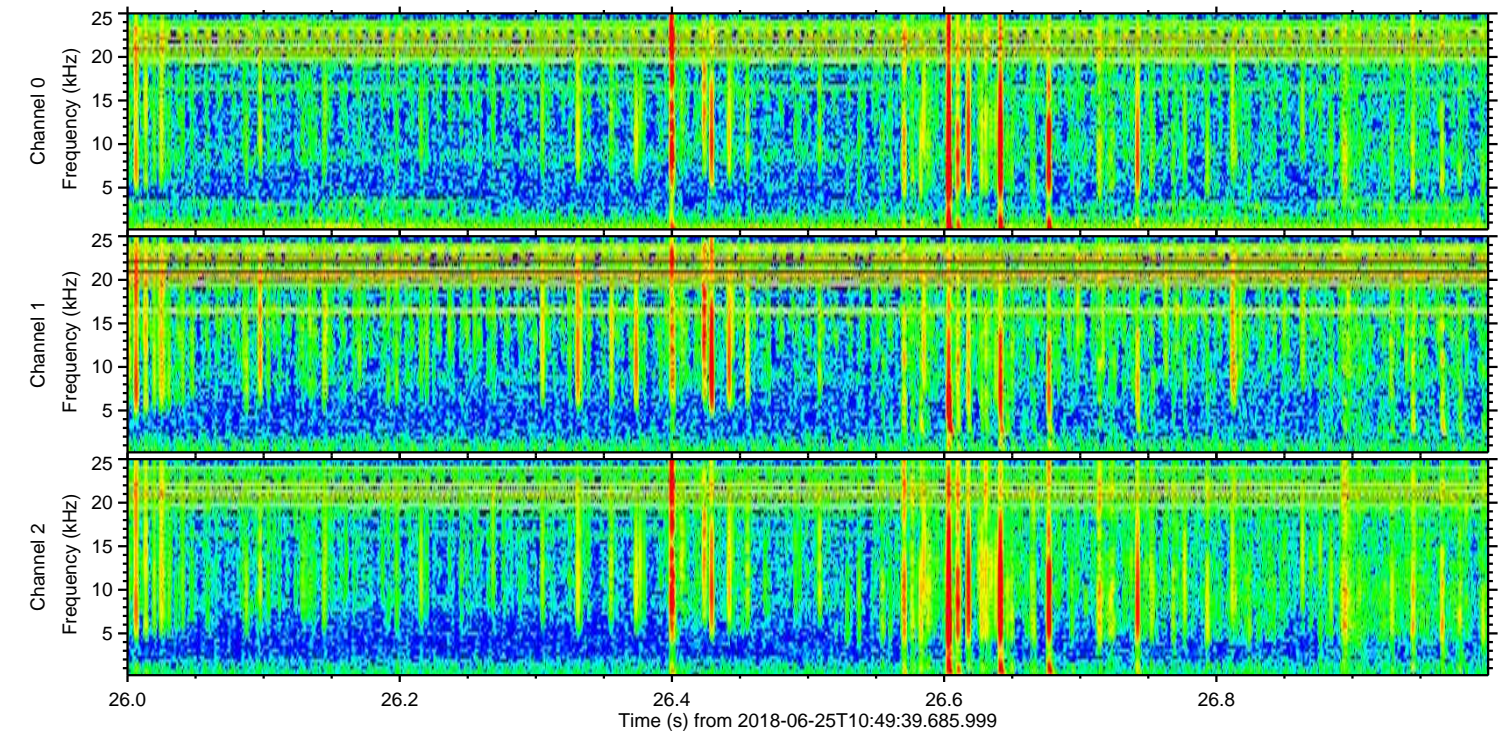
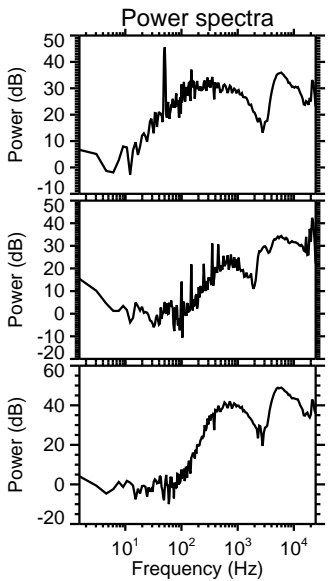
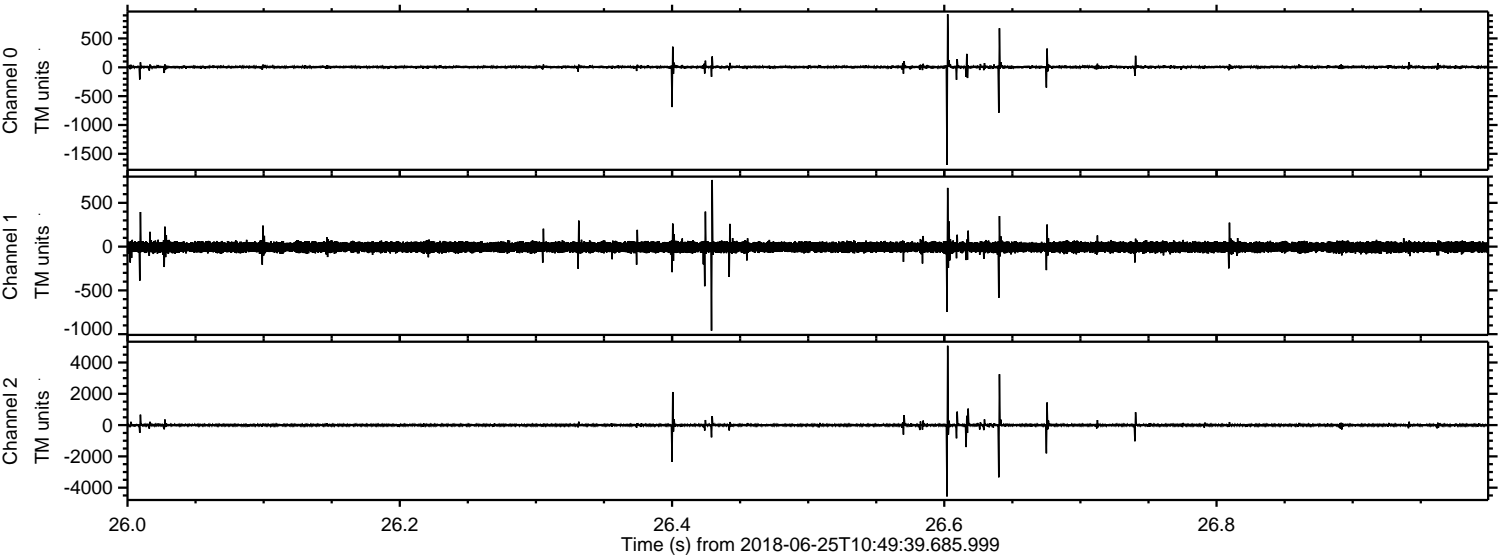
Processed Mon Jun 25 12:58:09 2018 by ELM ver.2012-10-06 from 001__elm20180625_104938__dat00.bin



Processed Mon Jun 25 12:58:09 2018 by ELM ver.2012-10-06 from 001__elm20180625_104938__dat00.bin



Processed Mon Jun 25 12:58:10 2018 by ELM ver.2012-10-06 from 001__elm20180625_104938__dat00.bin



Channel 0
mn: -1693
mx: 921
 μ : 5.2
 σ : 17.7

Channel 1
mn: -961
mx: 762
 μ : -6.0
 σ : 32.4

Channel 2
mn: -4561
mx: 5077
 μ : -4.5
 σ : 69.8

