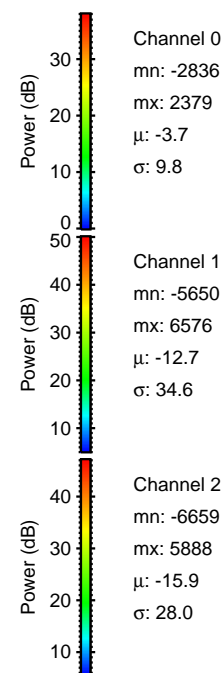
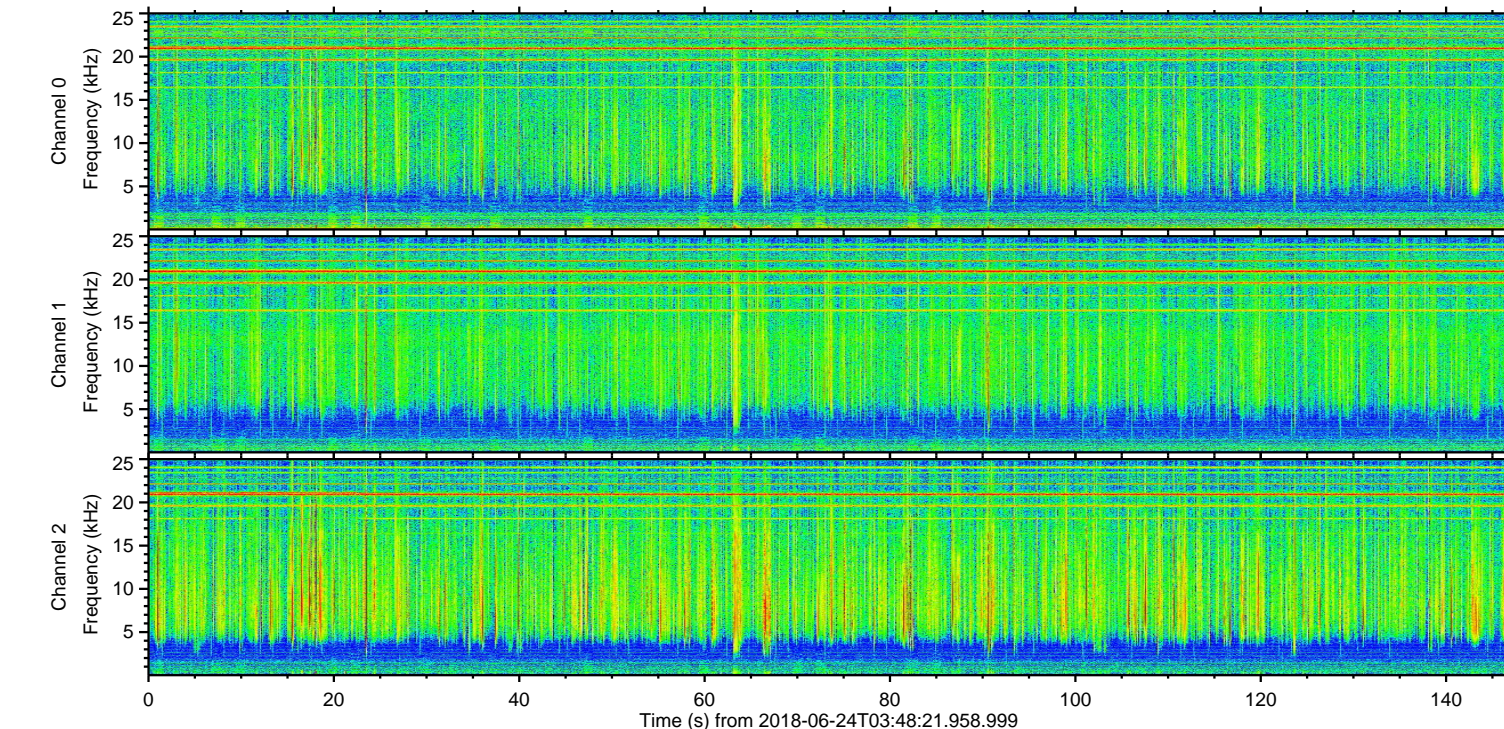
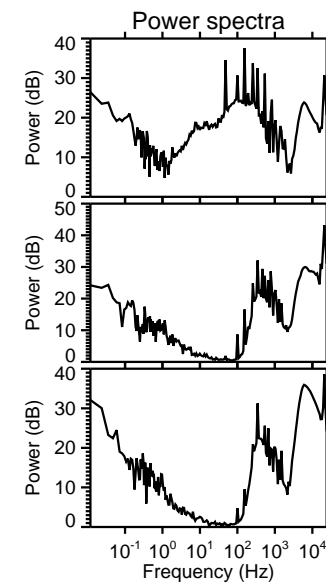
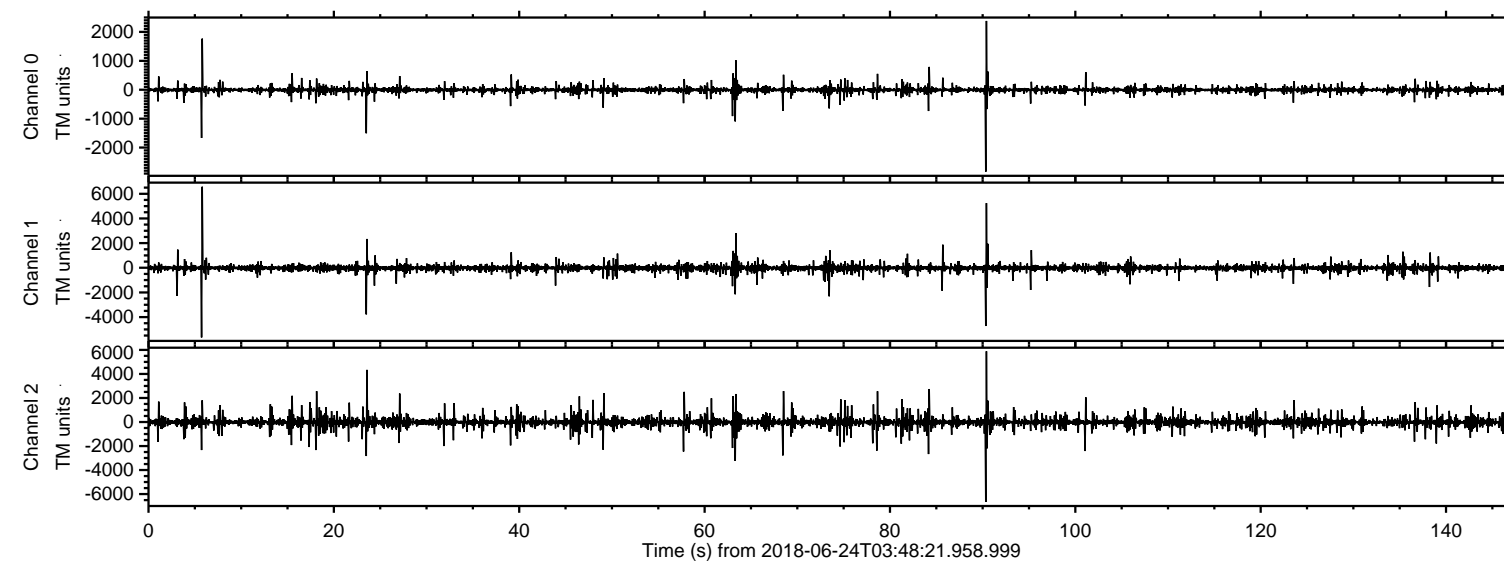
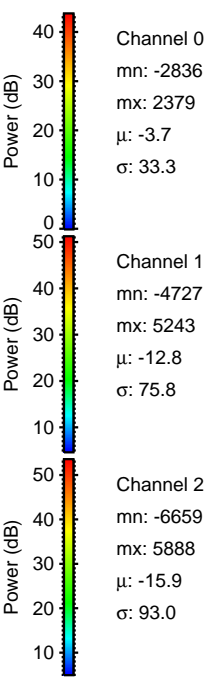
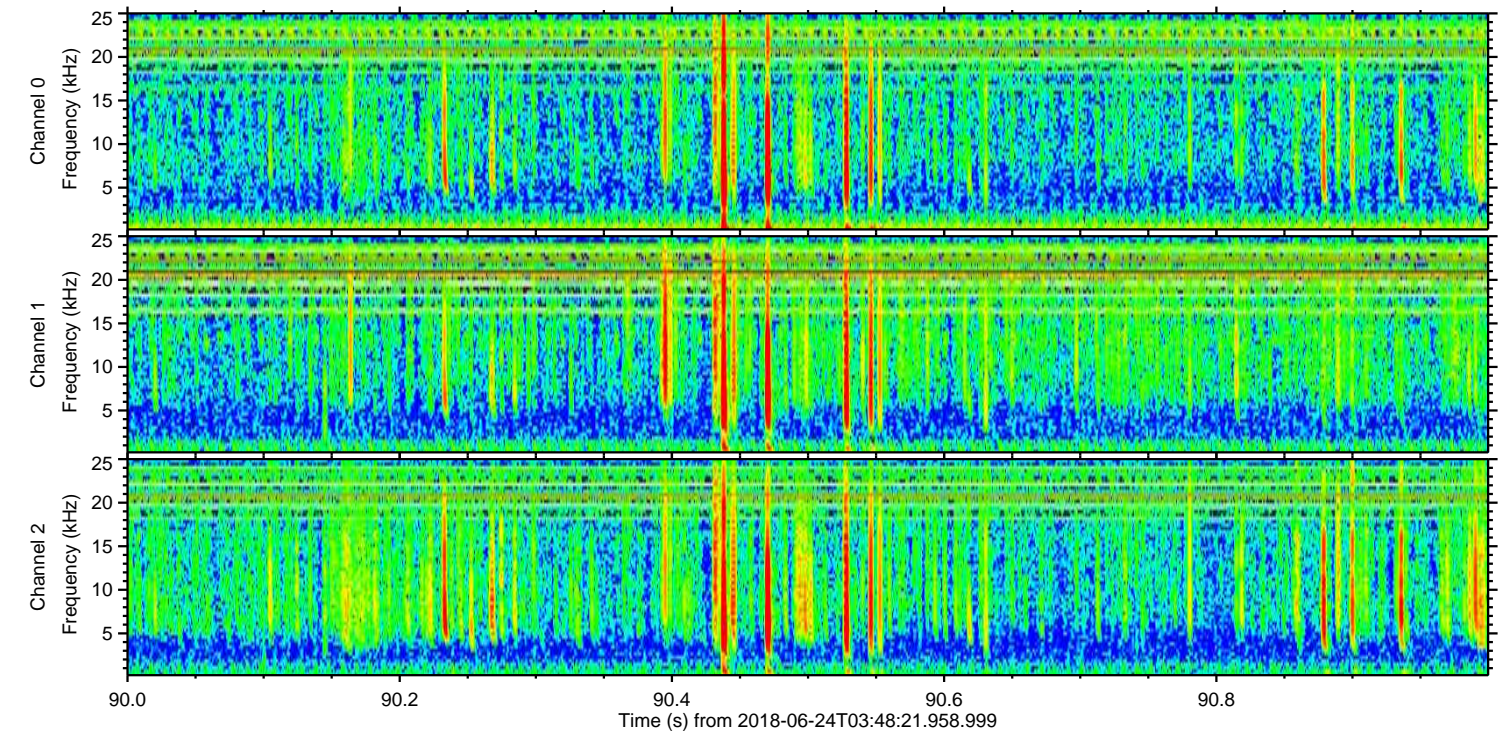
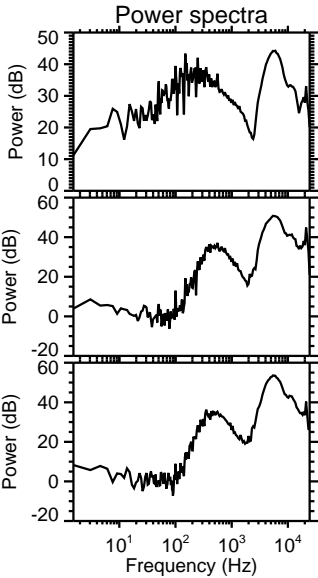
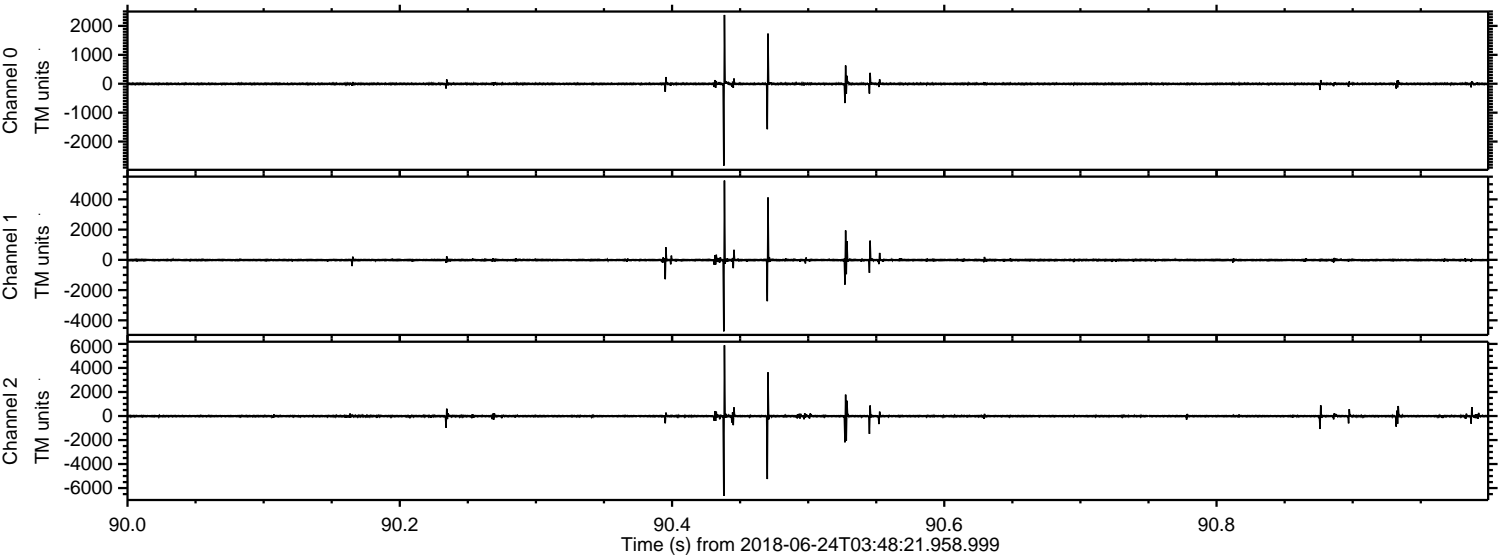


ELMAVAN 3D WAVEFORMS (Measured data sampled at 50 kHz) 51000 packets of 144 samples from 2018-06-24T03:48:21.958.999.

Processed Sun Jun 24 05:56:33 2018 by ELM ver.2012-10-06 from 001__elm20180624_034820__dat00.bin



Processed Sun Jun 24 05:56:40 2018 by ELM ver.2012-10-06 from 001__elm20180624_034820__dat00.bin



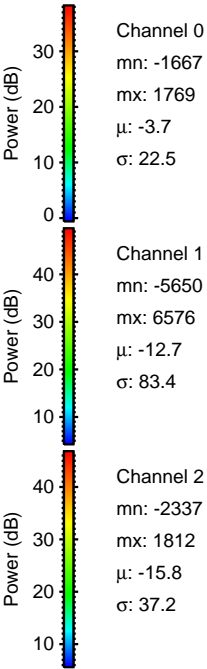
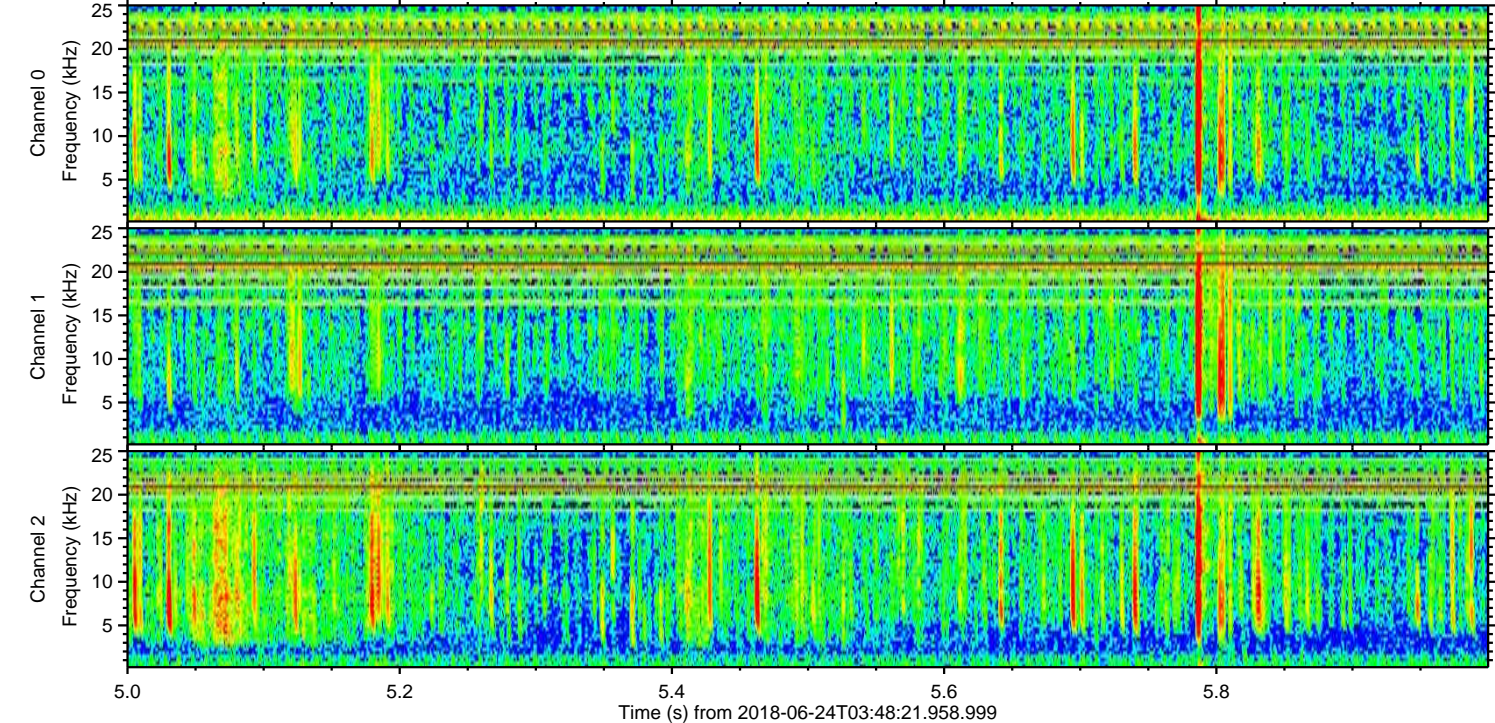
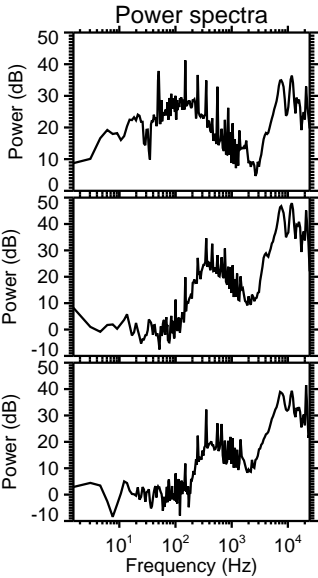
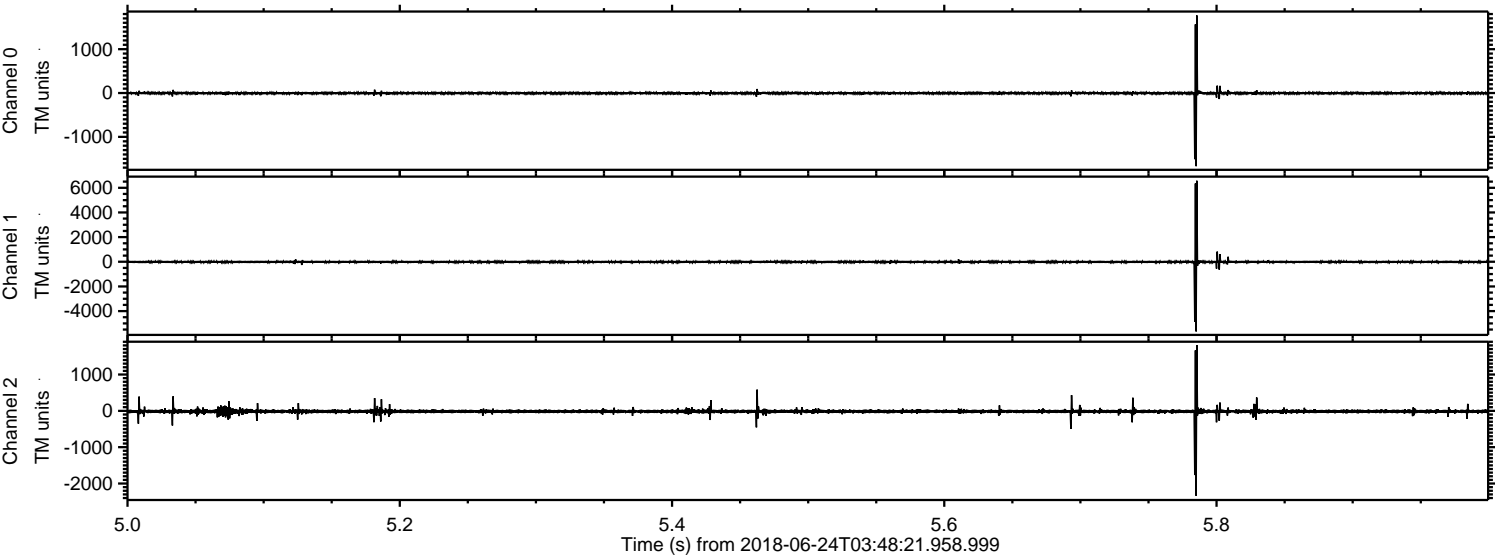
Channel 0
mn: -2836
mx: 2379
 μ : -3.7
 σ : 33.3

Channel 1
mn: -4727
mx: 5243
 μ : -12.8
 σ : 75.8

Channel 2
mn: -6659
mx: 5888
 μ : -15.9
 σ : 93.0

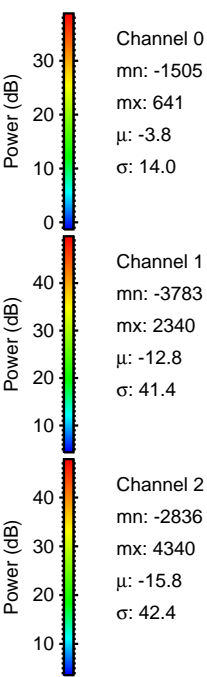
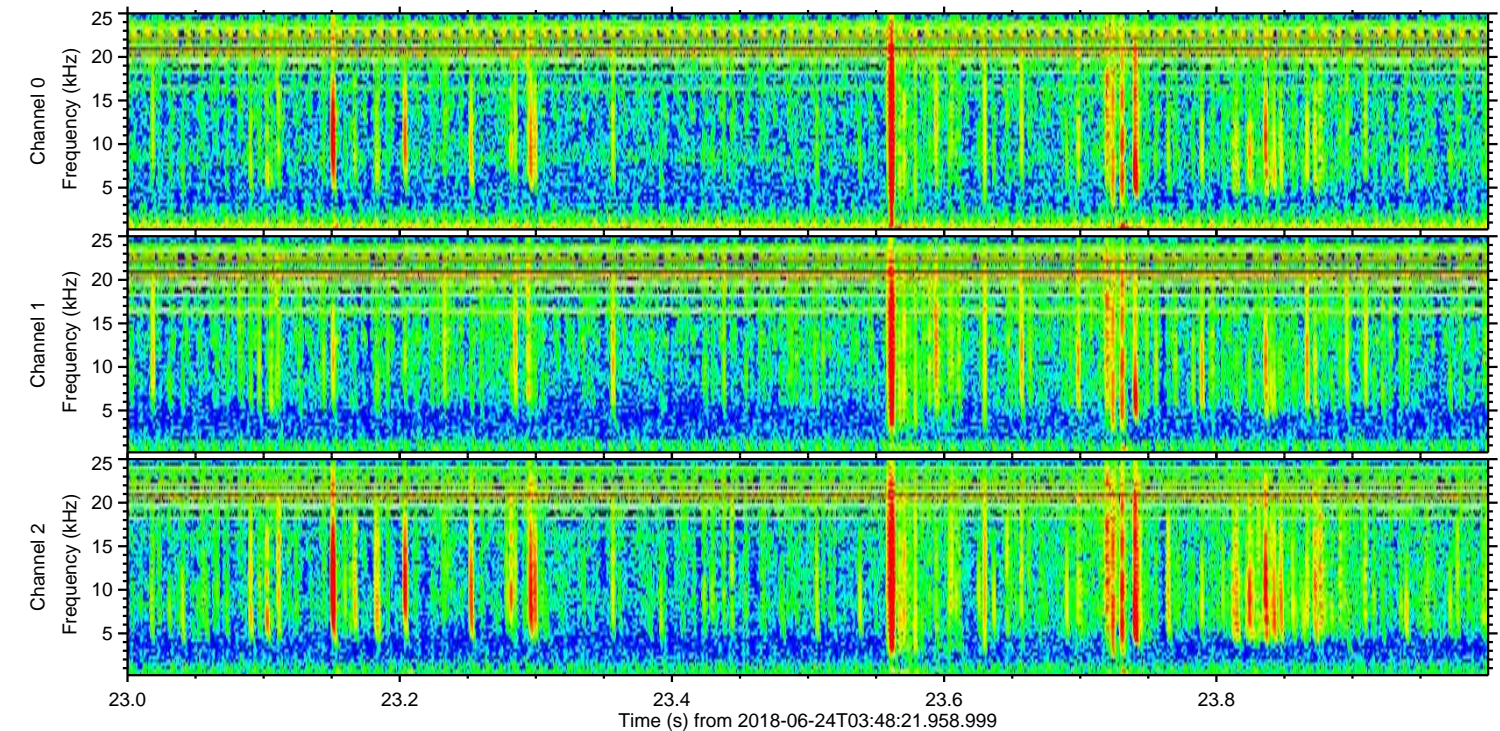
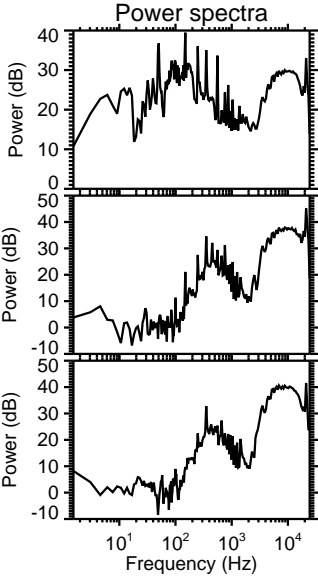
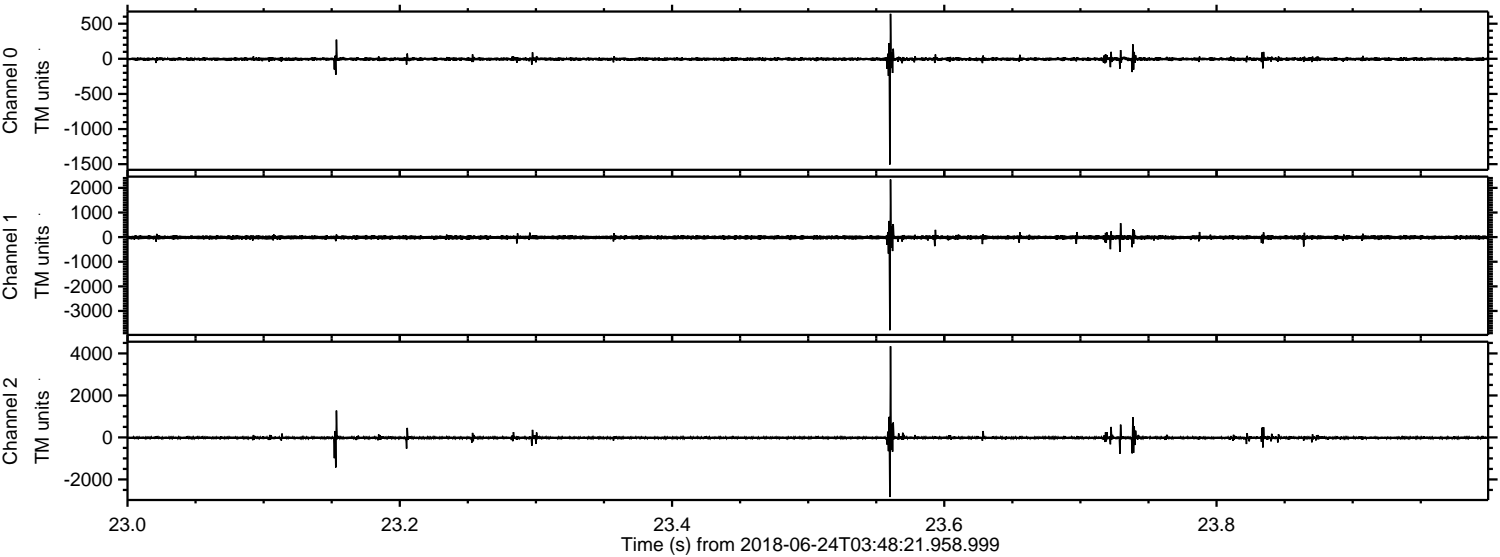
ELMAVAN 3D WAVEFORMS (Measured data sampled at 50 kHz) 51000 packets of 144 samples from 2018-06-24T03:48:21.958.999. Part 6/147

Processed Sun Jun 24 05:56:41 2018 by ELM ver.2012-10-06 from 001__elm20180624_034820__dat00.bin

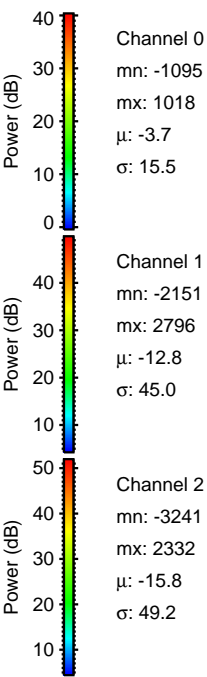
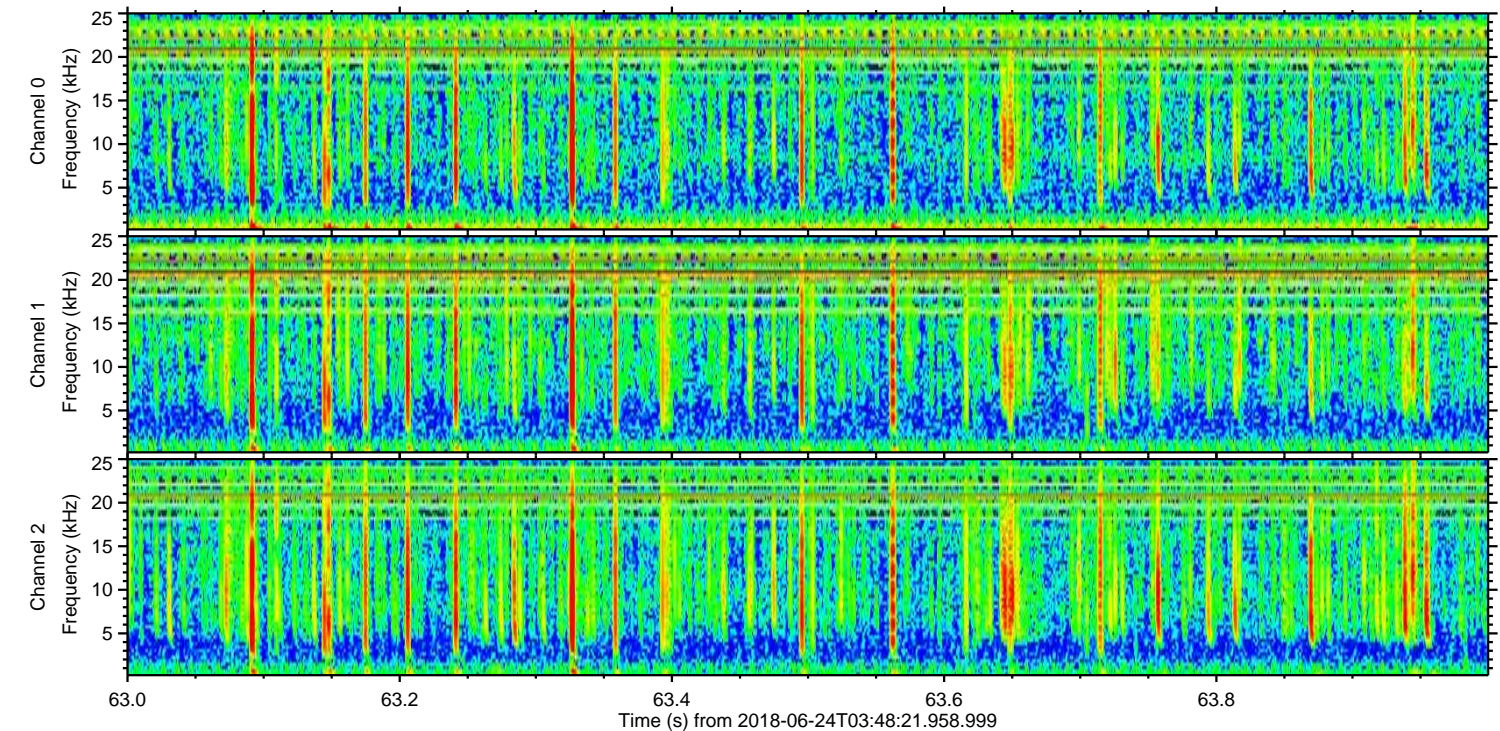
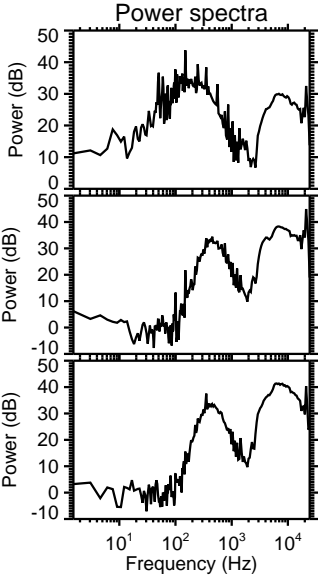
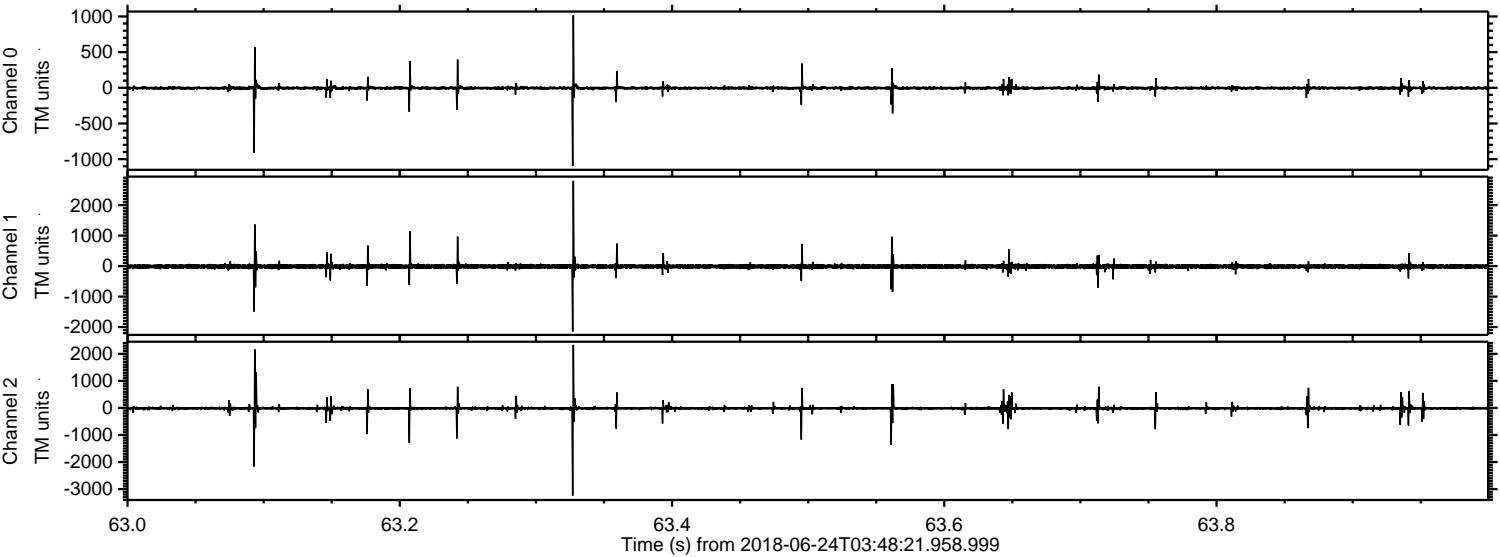


ELMAVAN 3D WAVEFORMS (Measured data sampled at 50 kHz) 51000 packets of 144 samples from 2018-06-24T03:48:21.958.999. Part 24/147

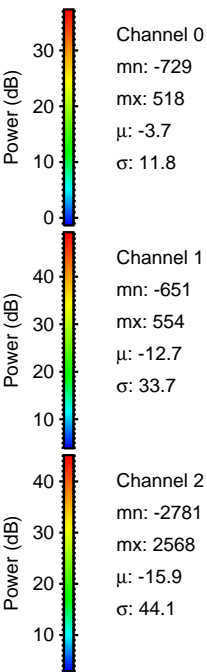
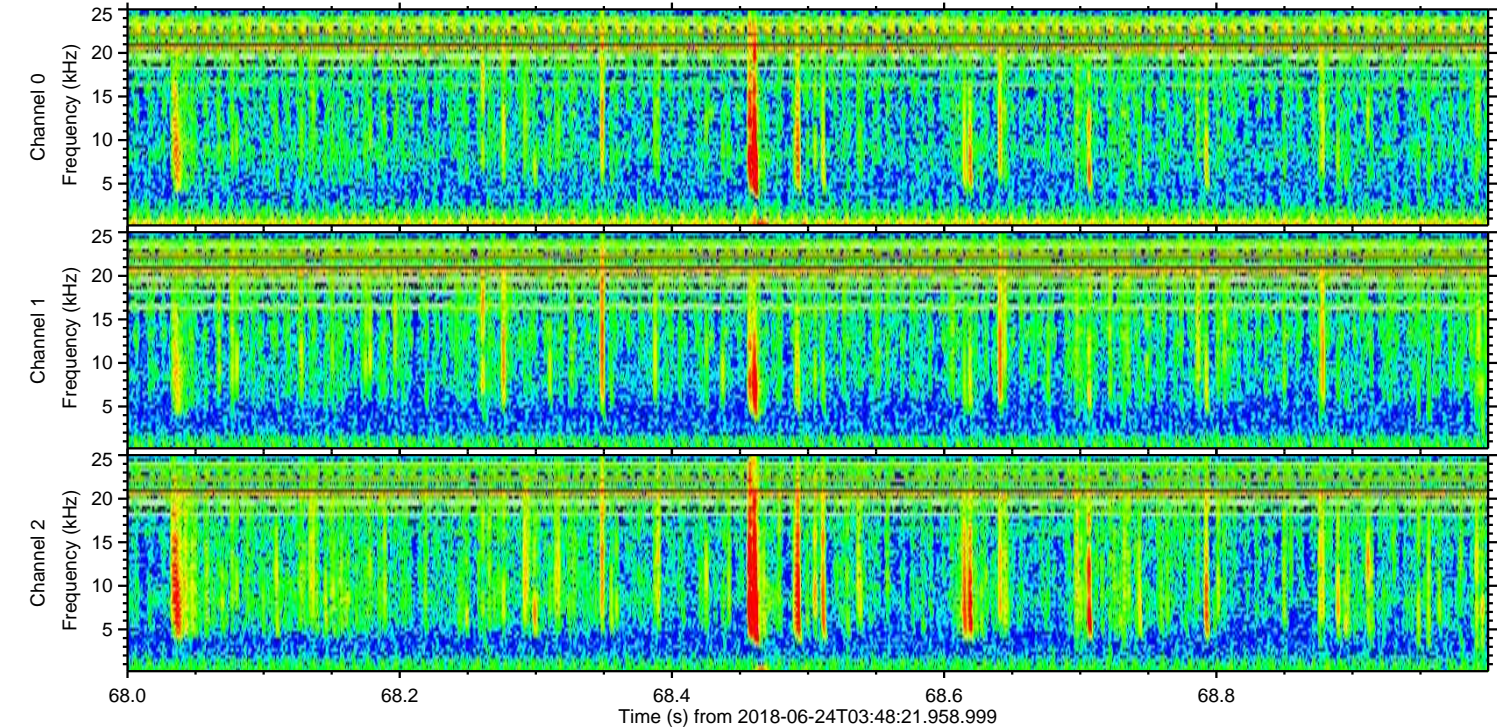
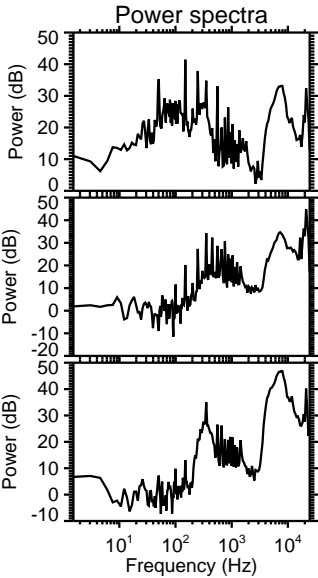
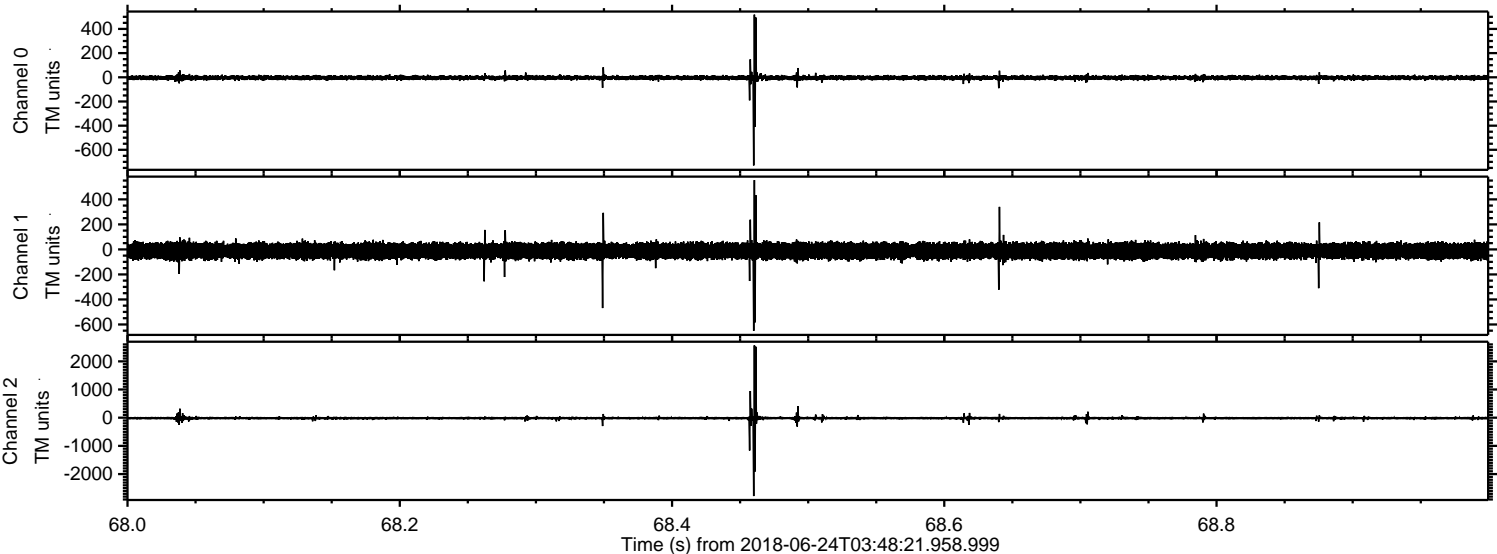
Processed Sun Jun 24 05:56:42 2018 by ELM ver.2012-10-06 from 001__elm20180624_034820__dat00.bin



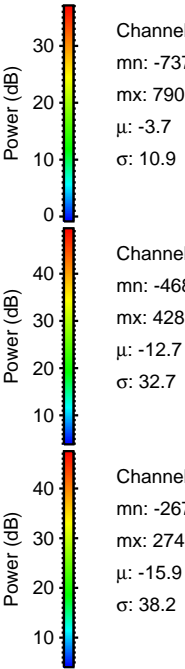
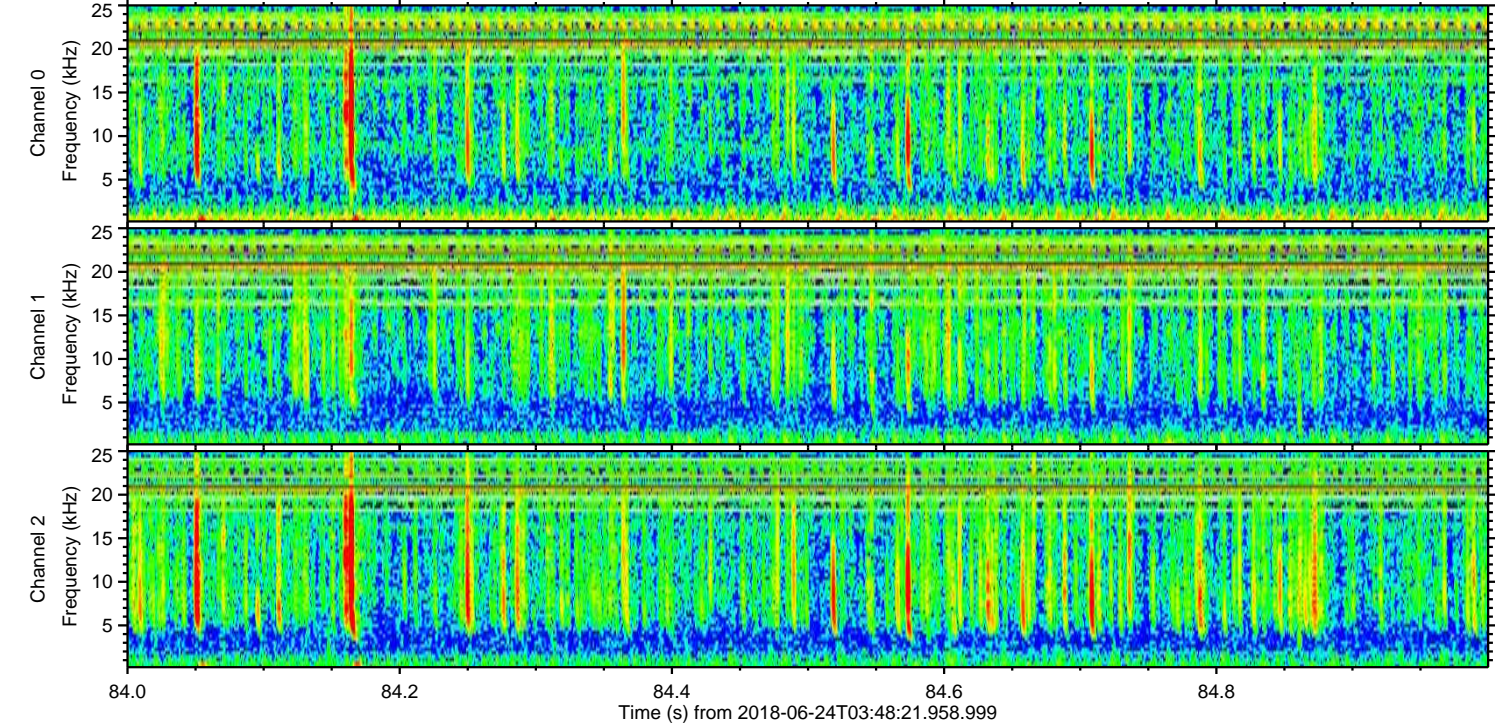
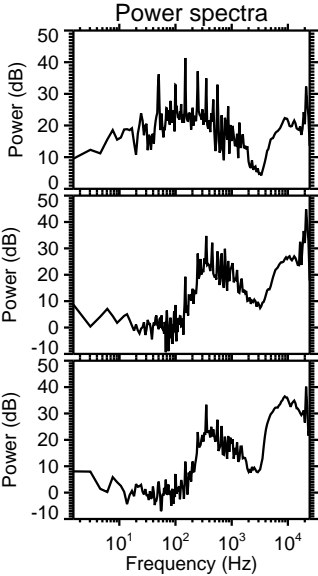
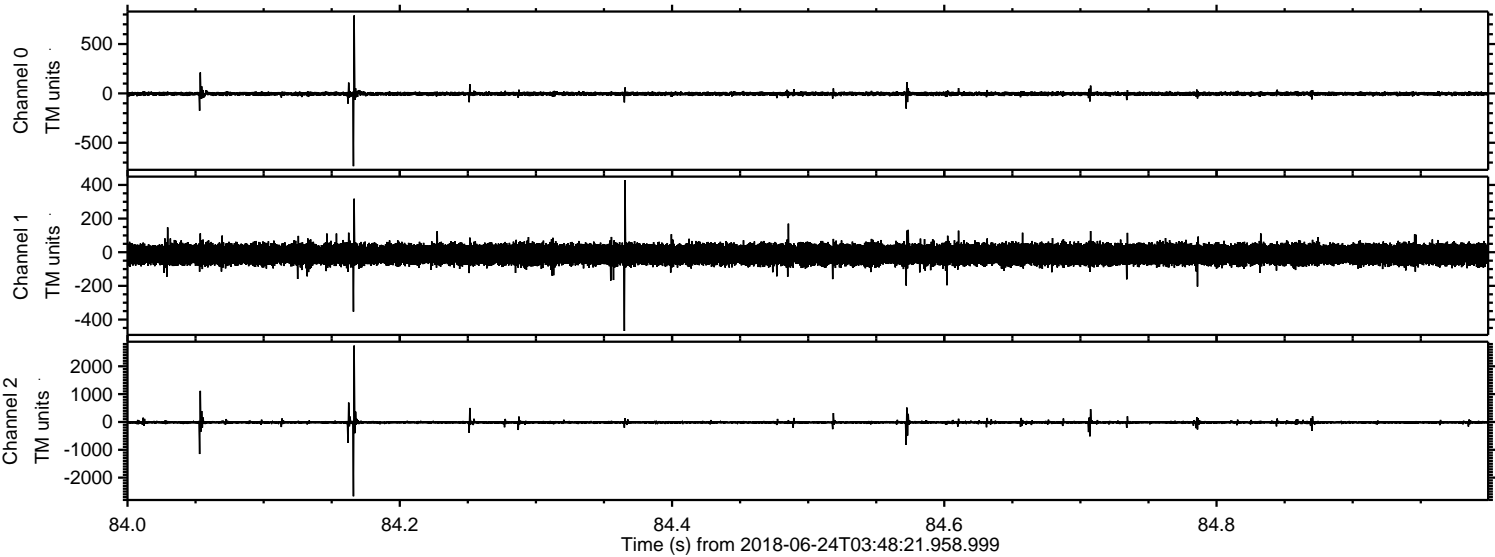
Processed Sun Jun 24 05:56:42 2018 by ELM ver.2012-10-06 from 001__elm20180624_034820__dat00.bin



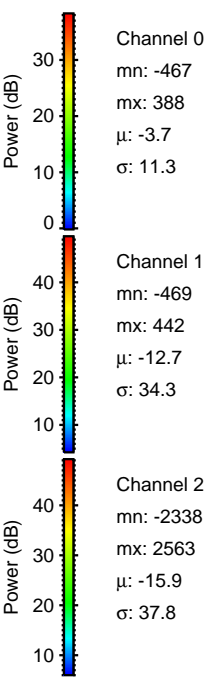
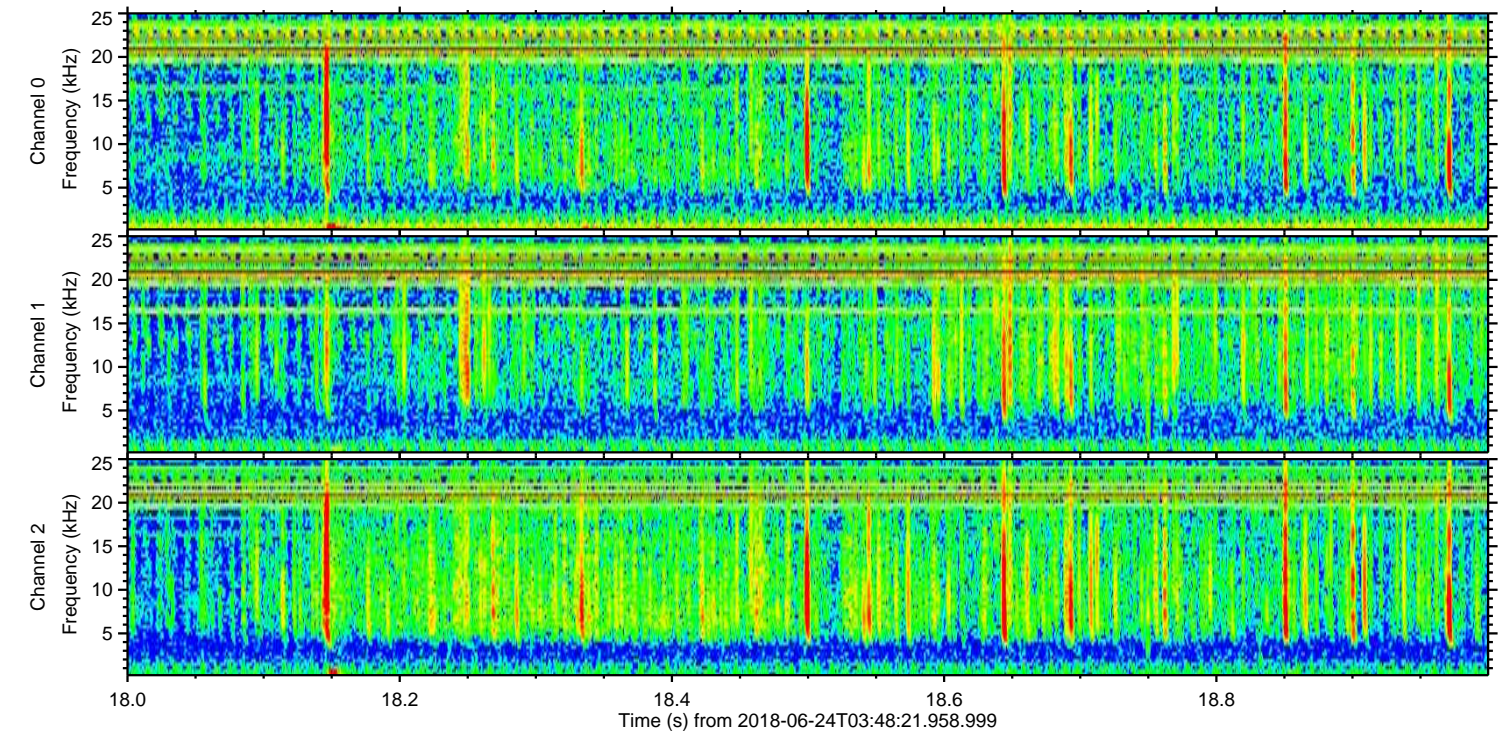
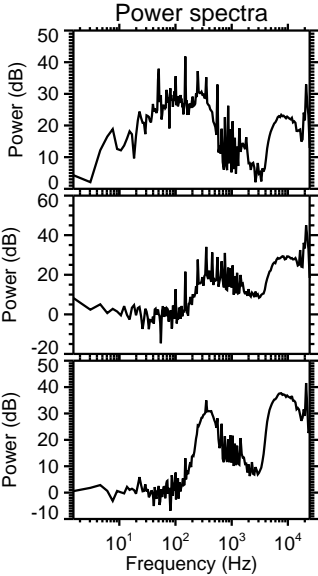
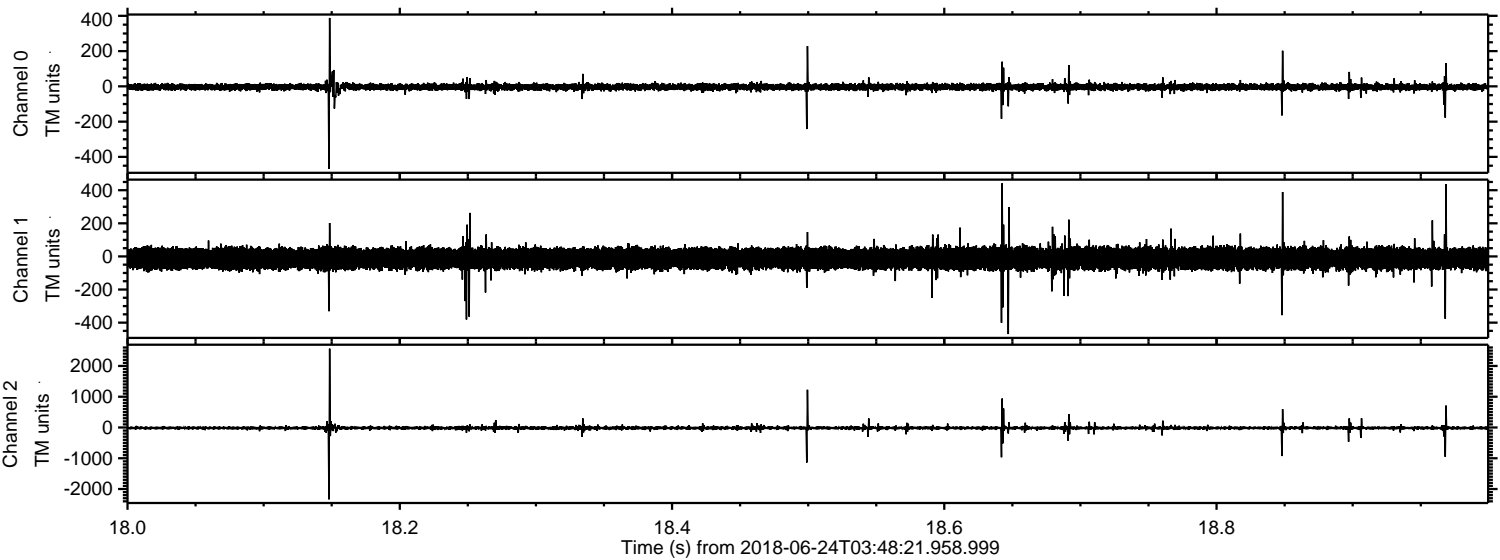
Processed Sun Jun 24 05:56:43 2018 by ELM ver.2012-10-06 from 001__elm20180624_034820__dat00.bin



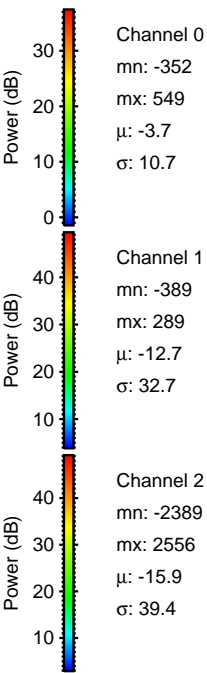
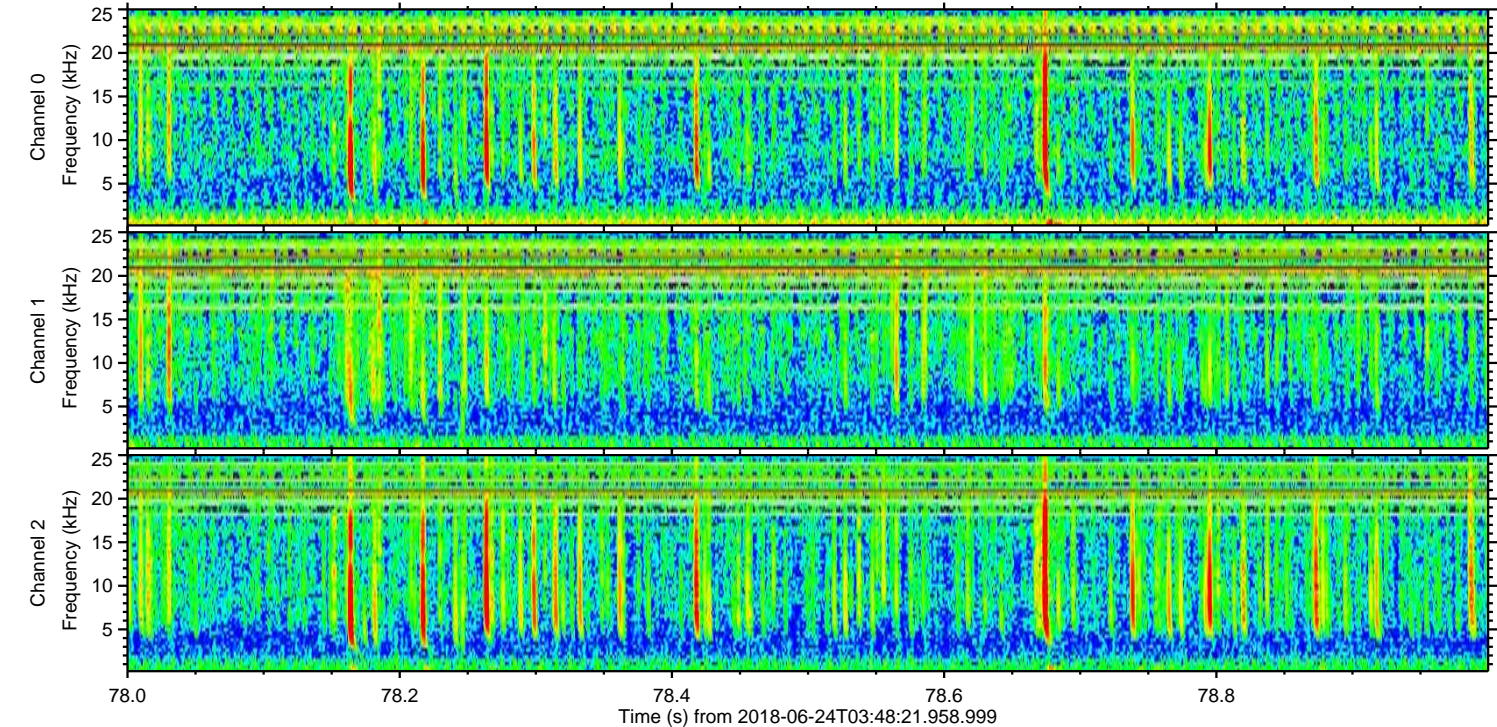
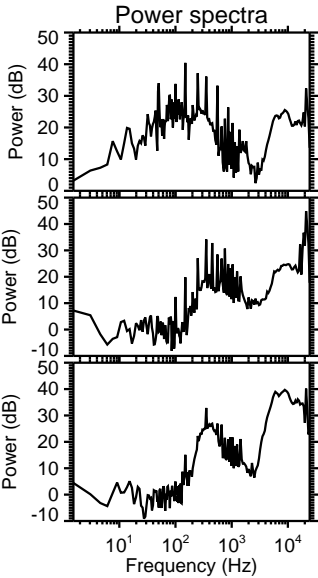
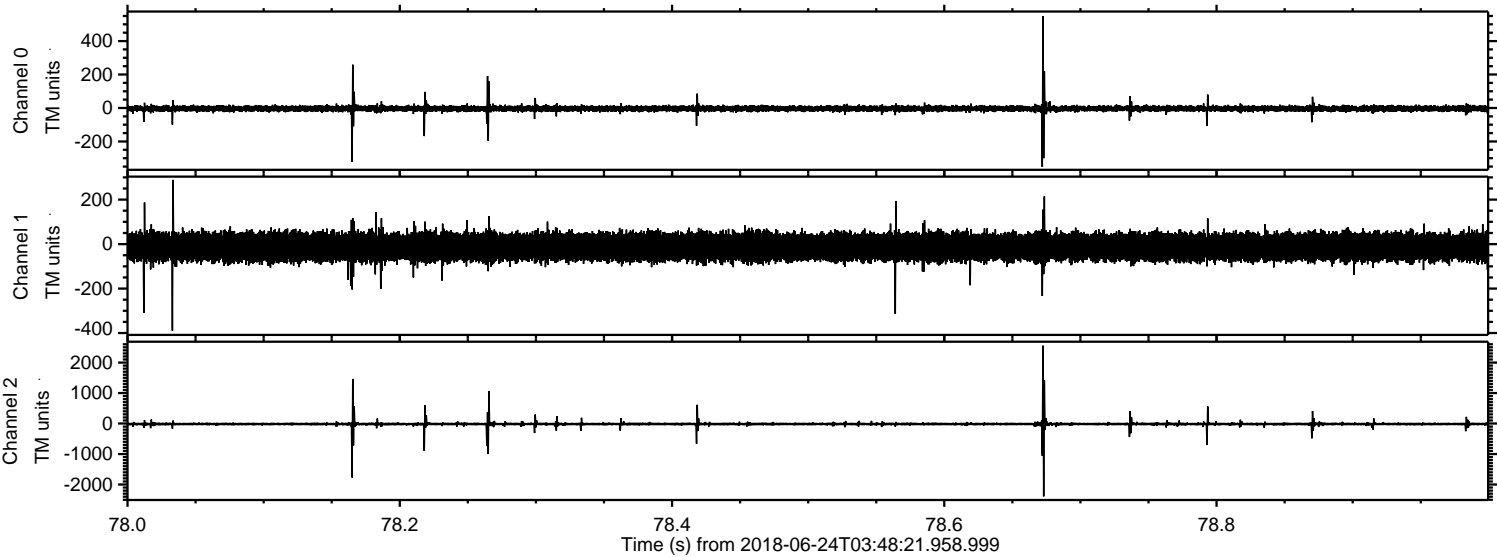
Processed Sun Jun 24 05:56:44 2018 by ELM ver.2012-10-06 from 001__elm20180624_034820__dat00.bin



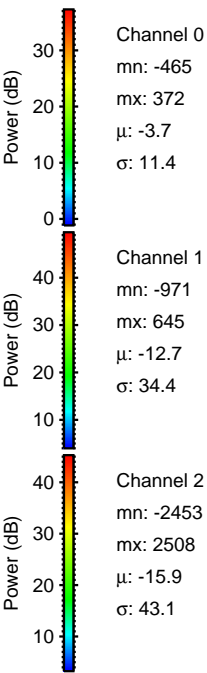
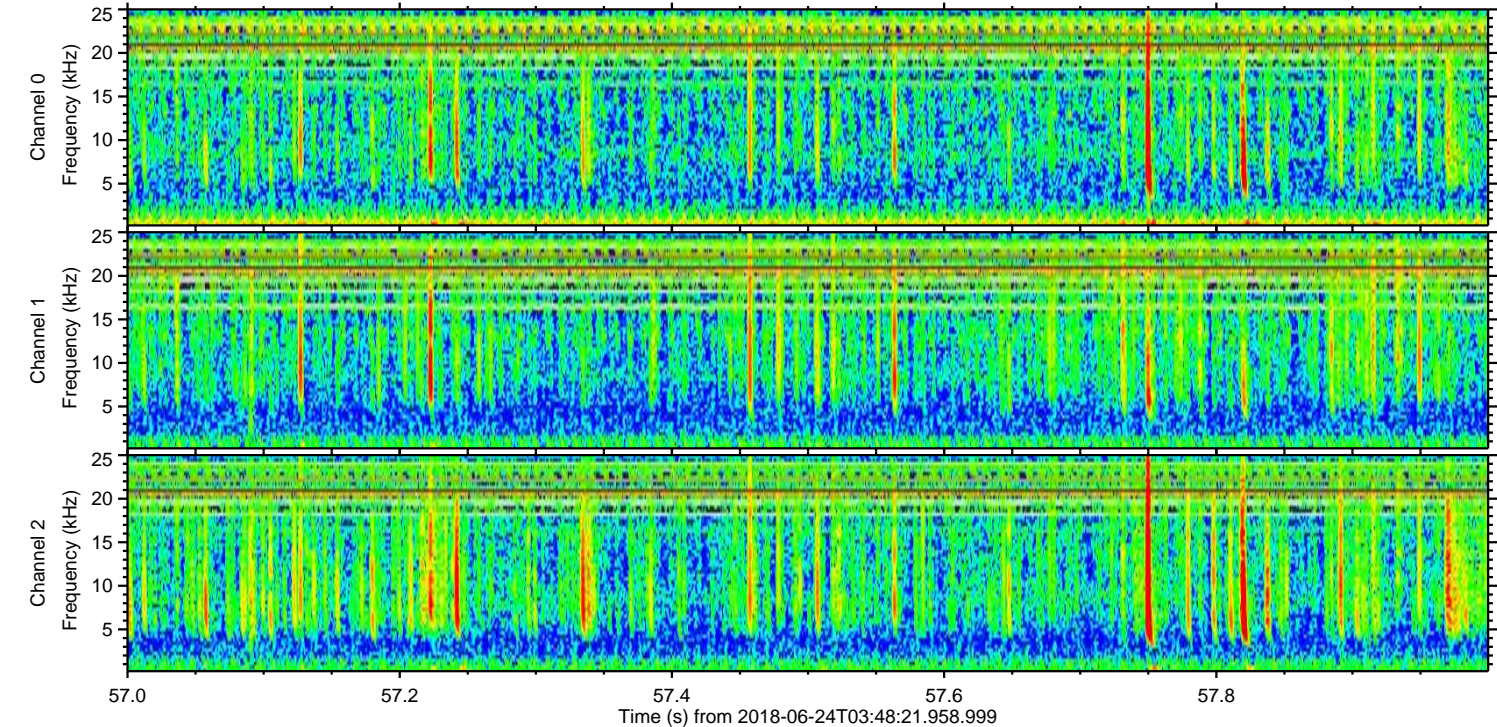
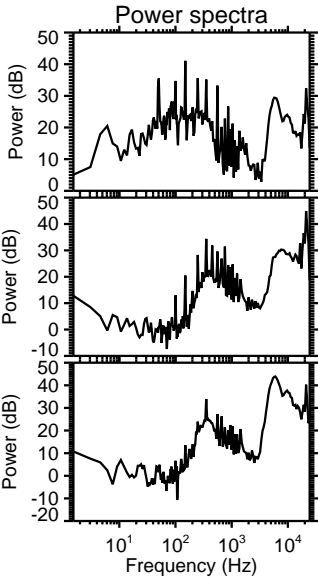
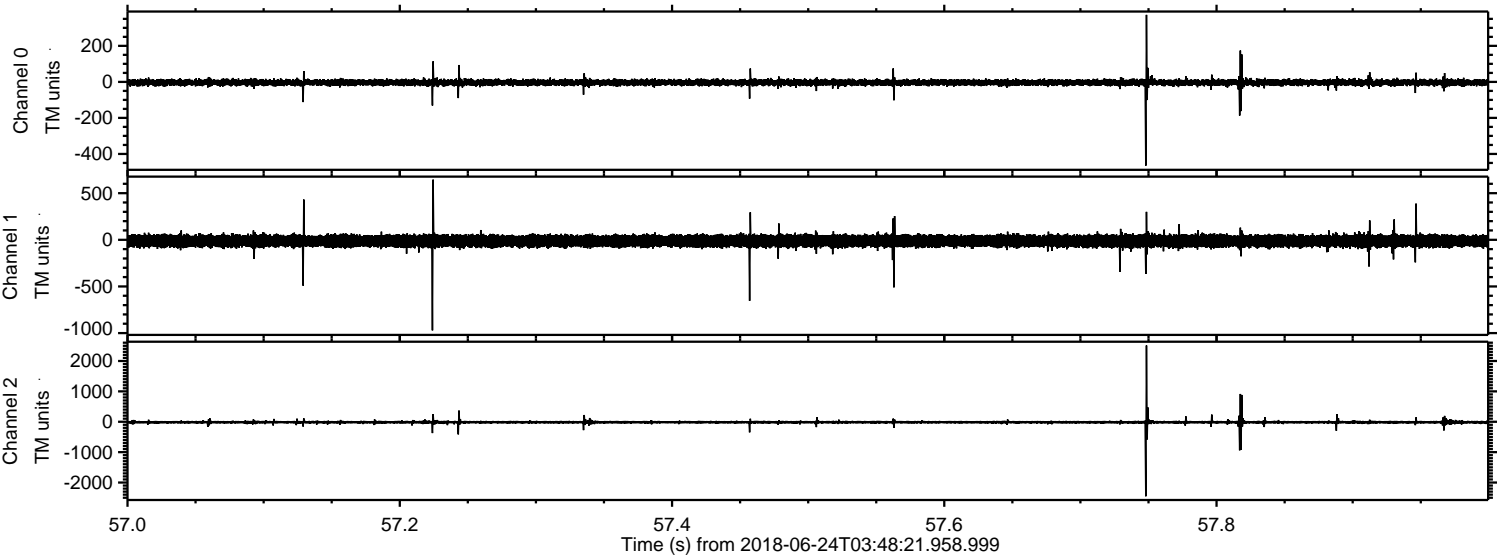
Processed Sun Jun 24 05:56:44 2018 by ELM ver.2012-10-06 from 001__elm20180624_034820__dat00.bin



Processed Sun Jun 24 05:56:45 2018 by ELM ver.2012-10-06 from 001__elm20180624_034820__dat00.bin



Processed Sun Jun 24 05:56:46 2018 by ELM ver.2012-10-06 from 001__elm20180624_034820__dat00.bin



Channel 0
mn: -465
mx: 372
 μ : -3.7
 σ : 11.4

Channel 1
mn: -971
mx: 645
 μ : -12.7
 σ : 34.4

Channel 2
mn: -2453
mx: 2508
 μ : -15.9
 σ : 43.1

Processed Sun Jun 24 05:56:47 2018 by ELM ver.2012-10-06 from 001__elm20180624_034820__dat00.bin

