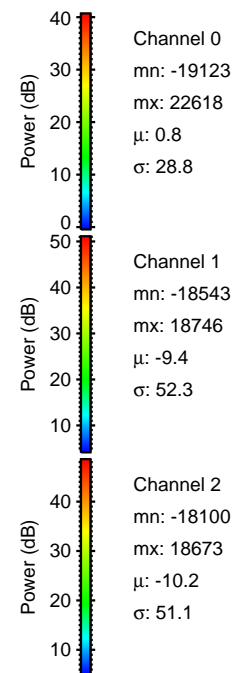
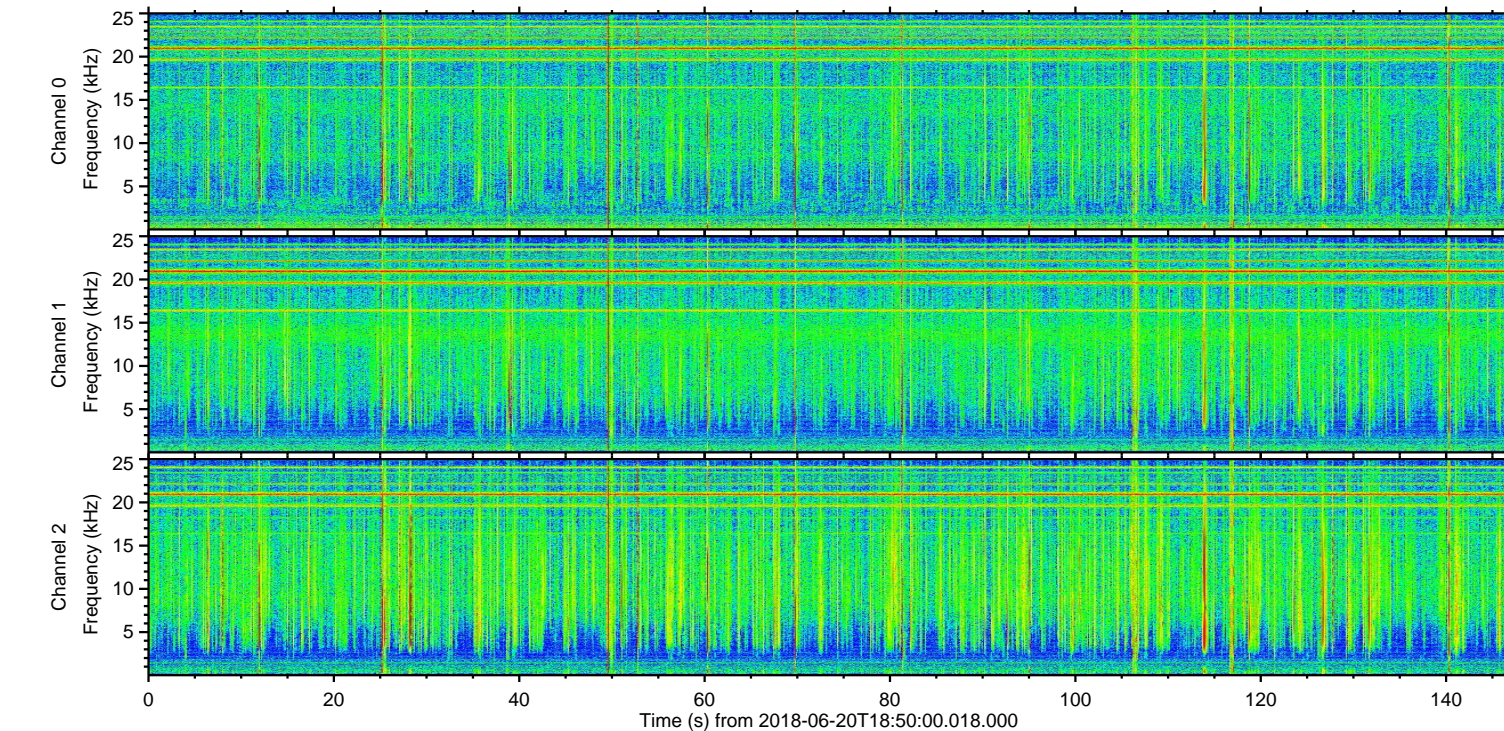
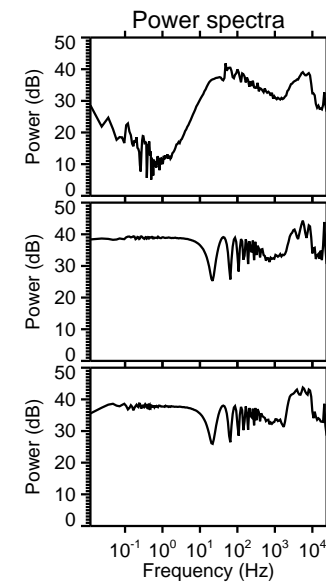
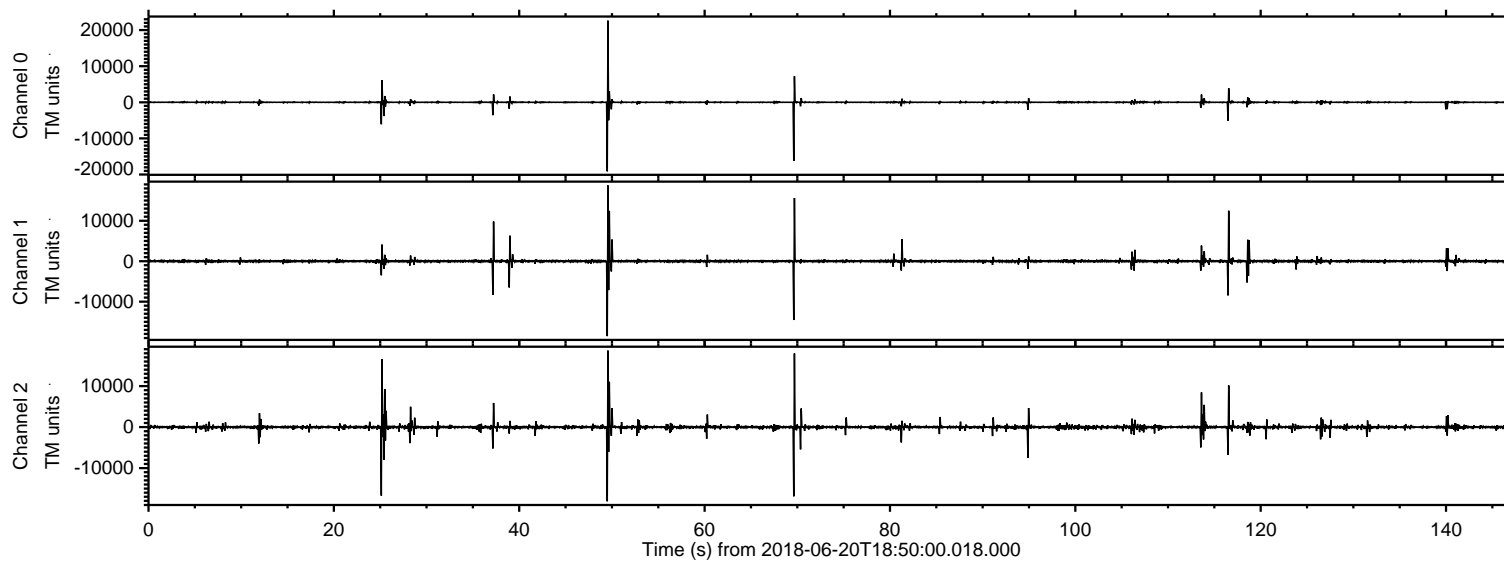


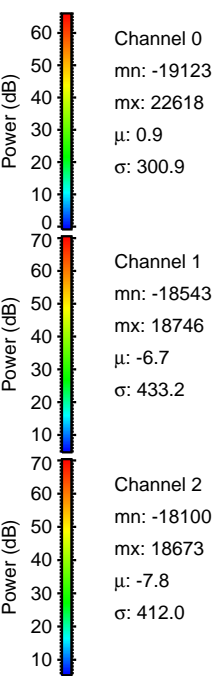
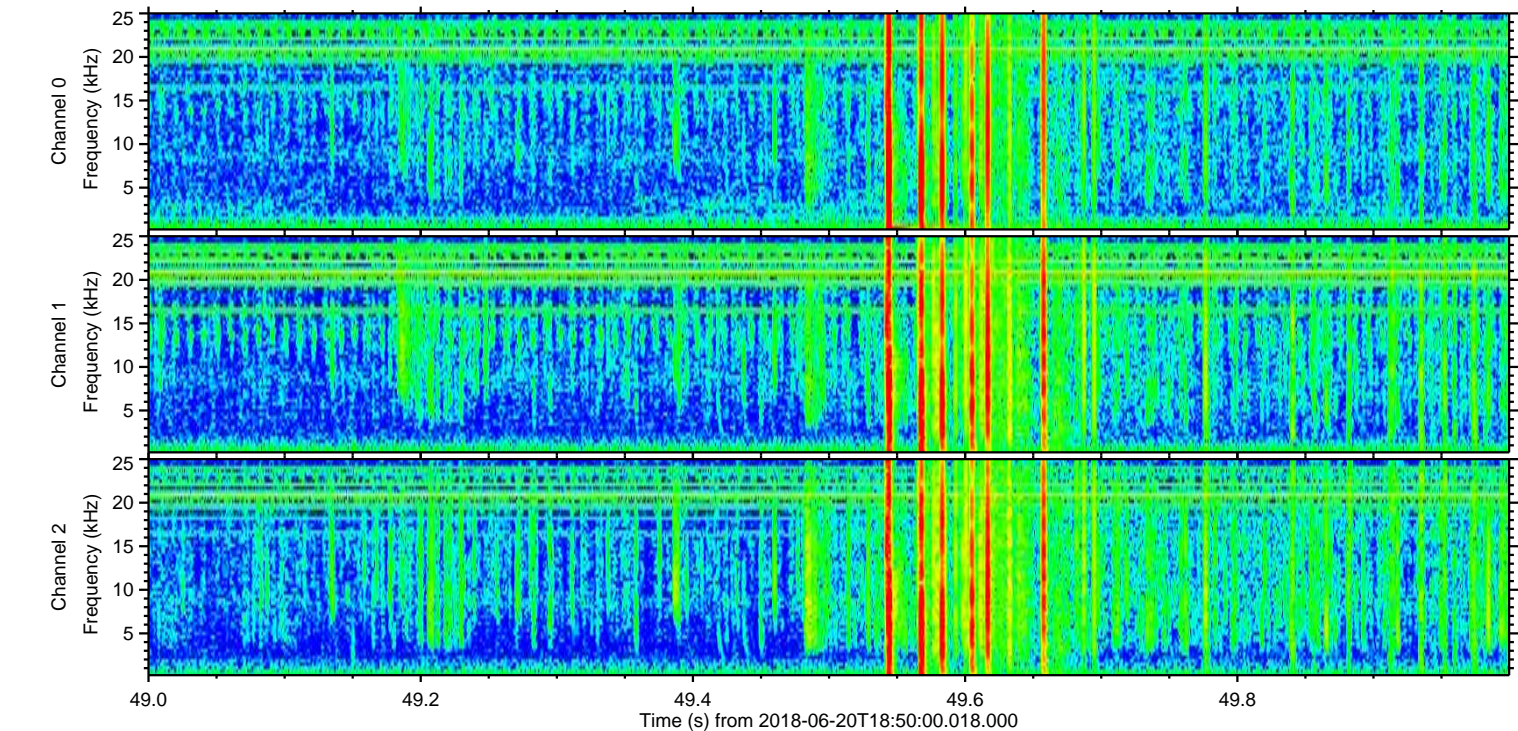
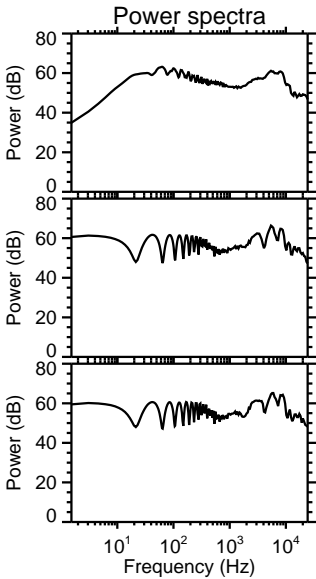
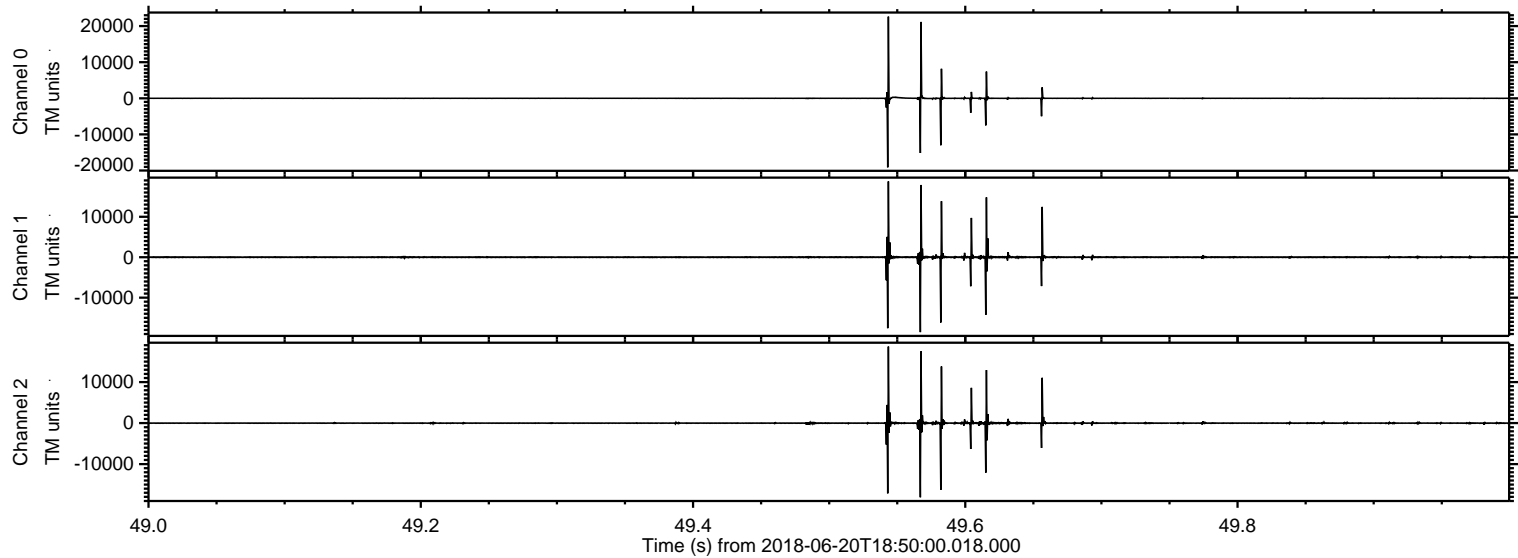
ELMAVAN 3D WAVEFORMS (Measured data sampled at 50 kHz) 51000 packets of 144 samples from 2018-06-20T18:50:00.018.000.

Processed Wed Jun 20 20:57:28 2018 by ELM ver.2012-10-06 from 001__elm20180620_184959__dat00.bin



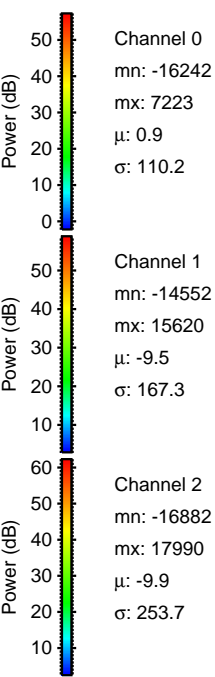
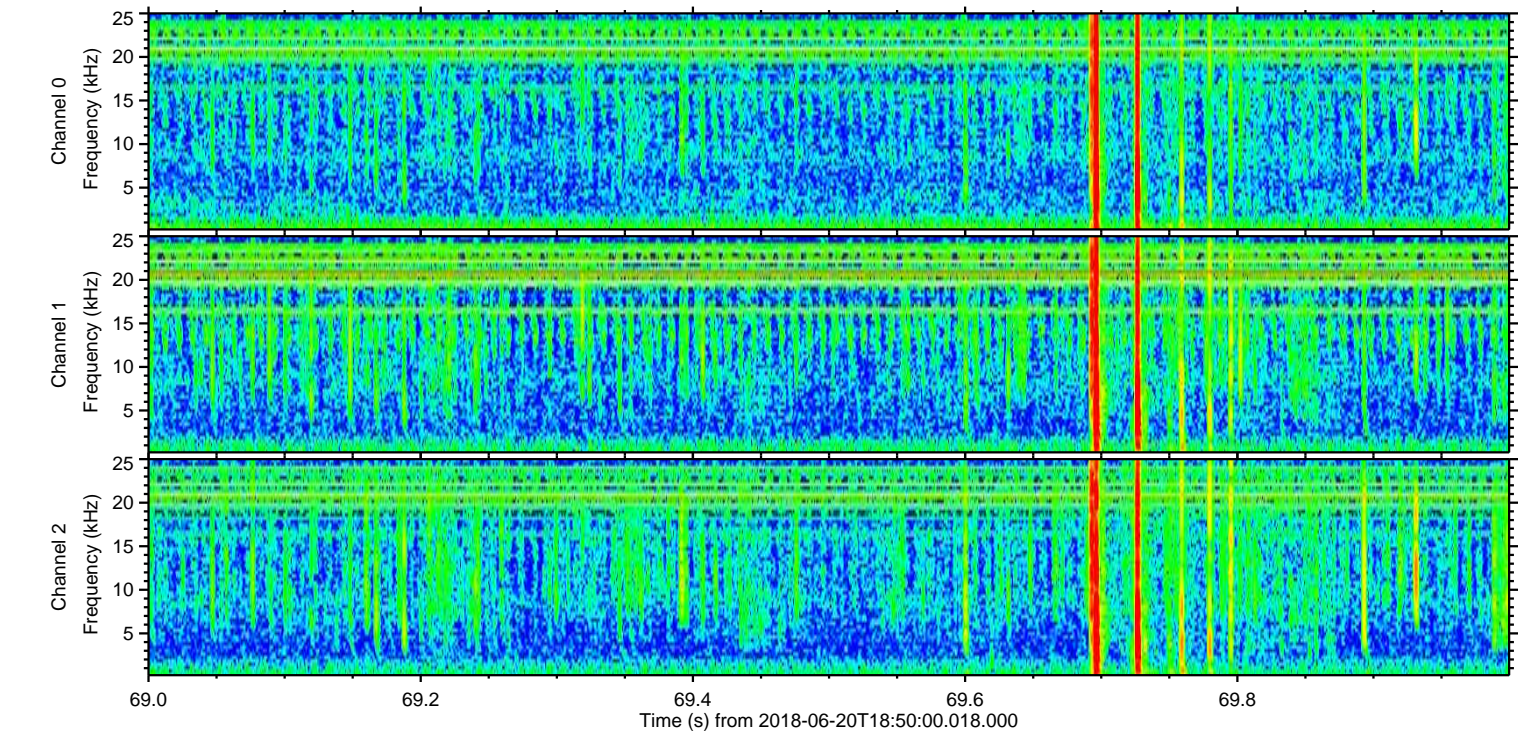
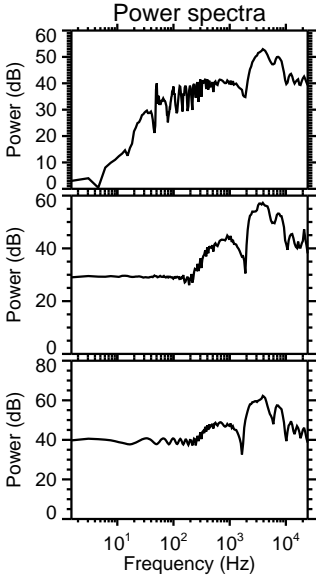
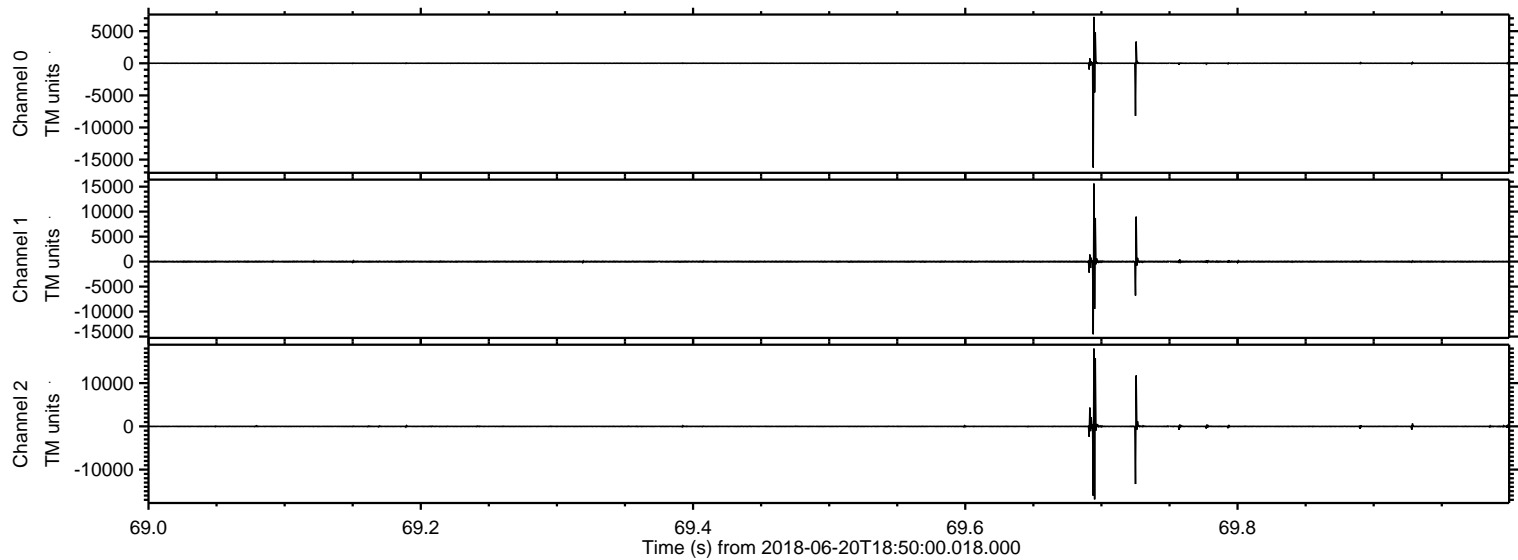
ELMAVAN 3D WAVEFORMS (Measured data sampled at 50 kHz) 51000 packets of 144 samples from 2018-06-20T18:50:00.018.000. Part 50/147

Processed Wed Jun 20 20:57:34 2018 by ELM ver.2012-10-06 from 001__elm20180620_184959__dat00.bin



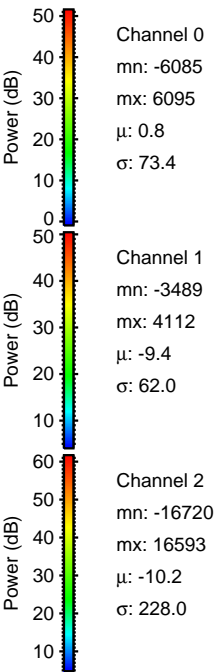
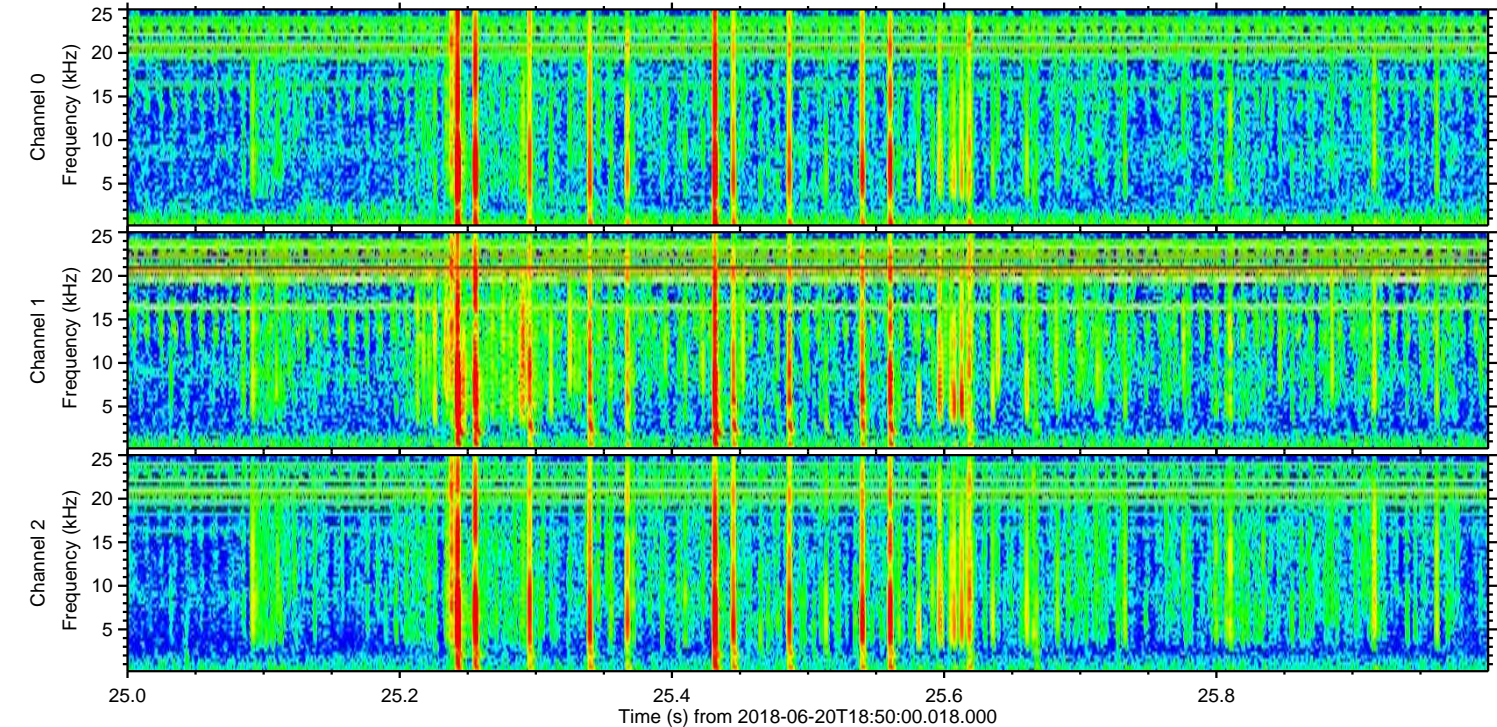
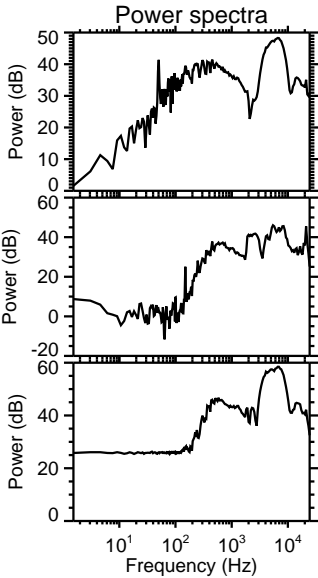
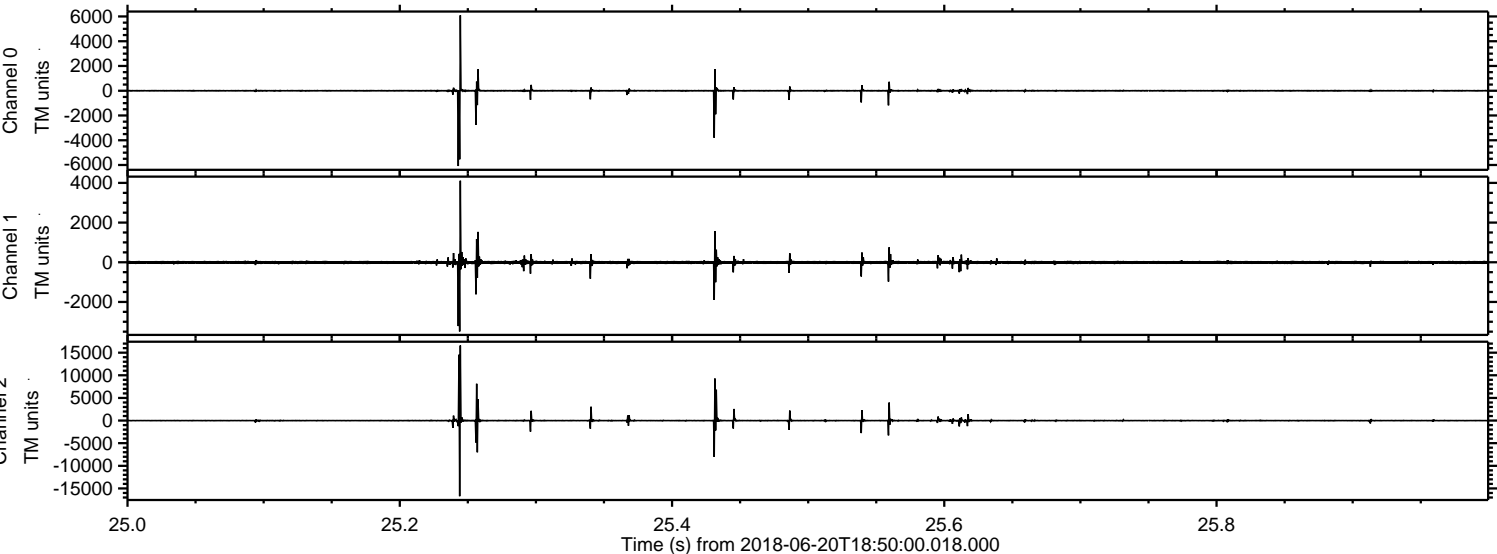
ELMAVAN 3D WAVEFORMS (Measured data sampled at 50 kHz) 51000 packets of 144 samples from 2018-06-20T18:50:00.018.000. Part 70/147

Processed Wed Jun 20 20:57:35 2018 by ELM ver.2012-10-06 from 001__elm20180620_184959__dat00.bin



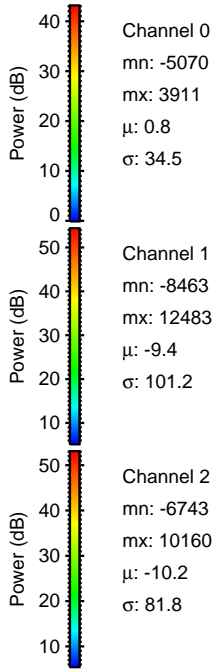
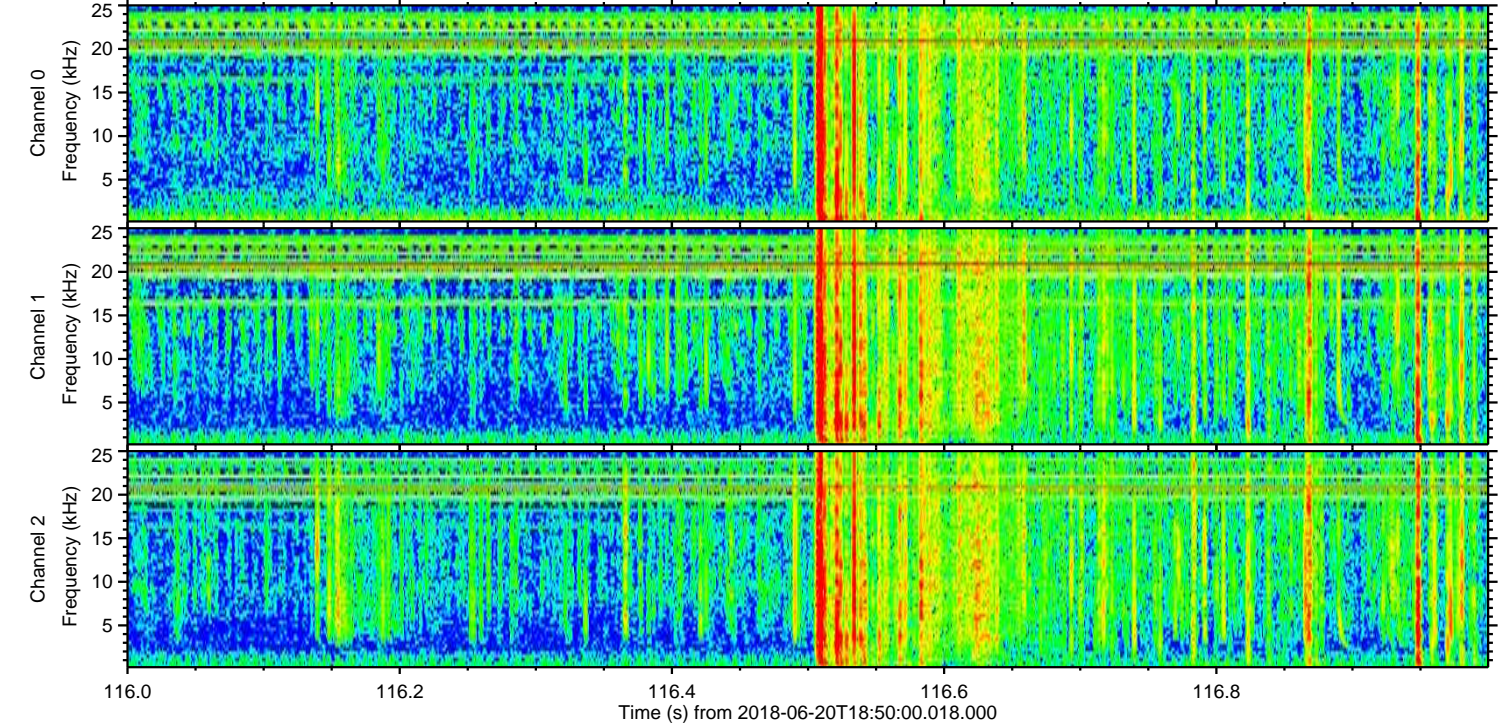
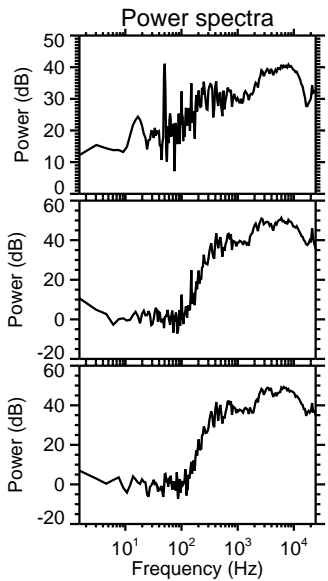
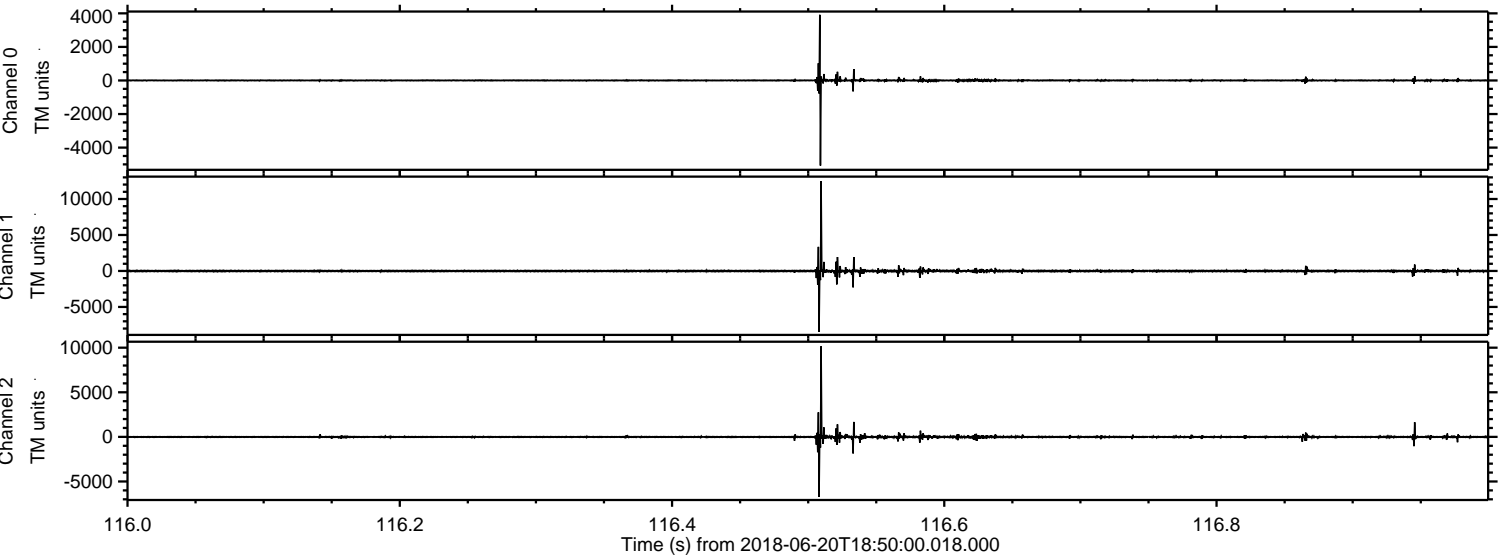
ELMAVAN 3D WAVEFORMS (Measured data sampled at 50 kHz) 51000 packets of 144 samples from 2018-06-20T18:50:00.018.000. Part 26/147

Processed Wed Jun 20 20:57:35 2018 by ELM ver.2012-10-06 from 001__elm20180620_184959__dat00.bin

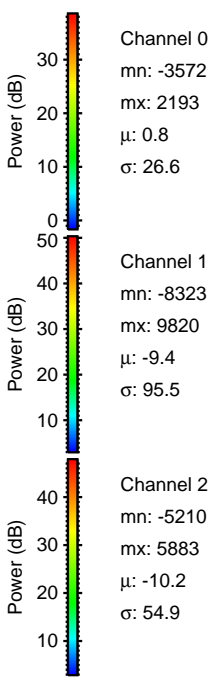
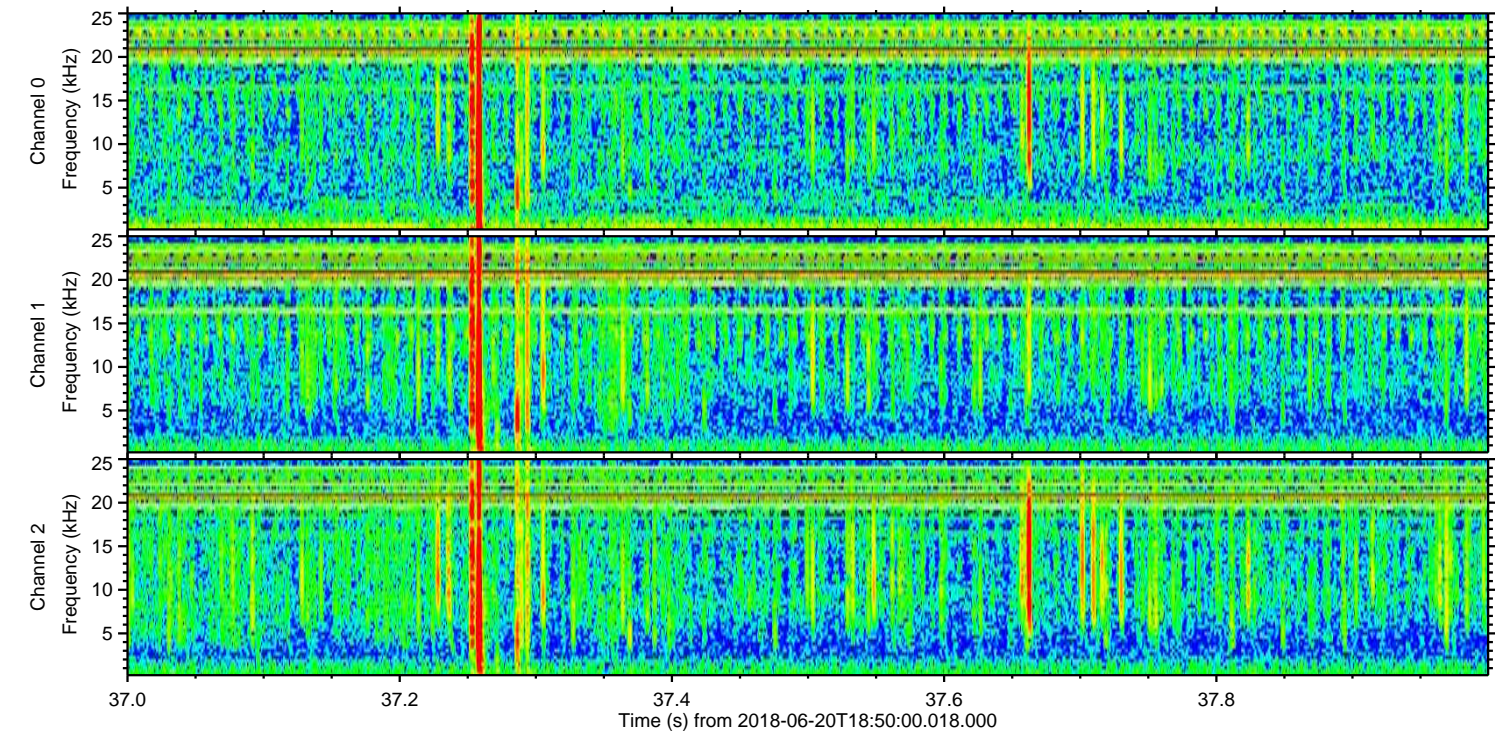
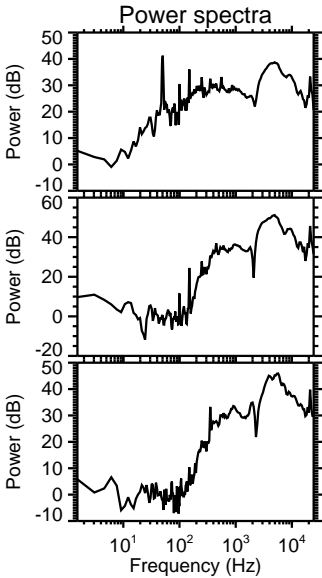
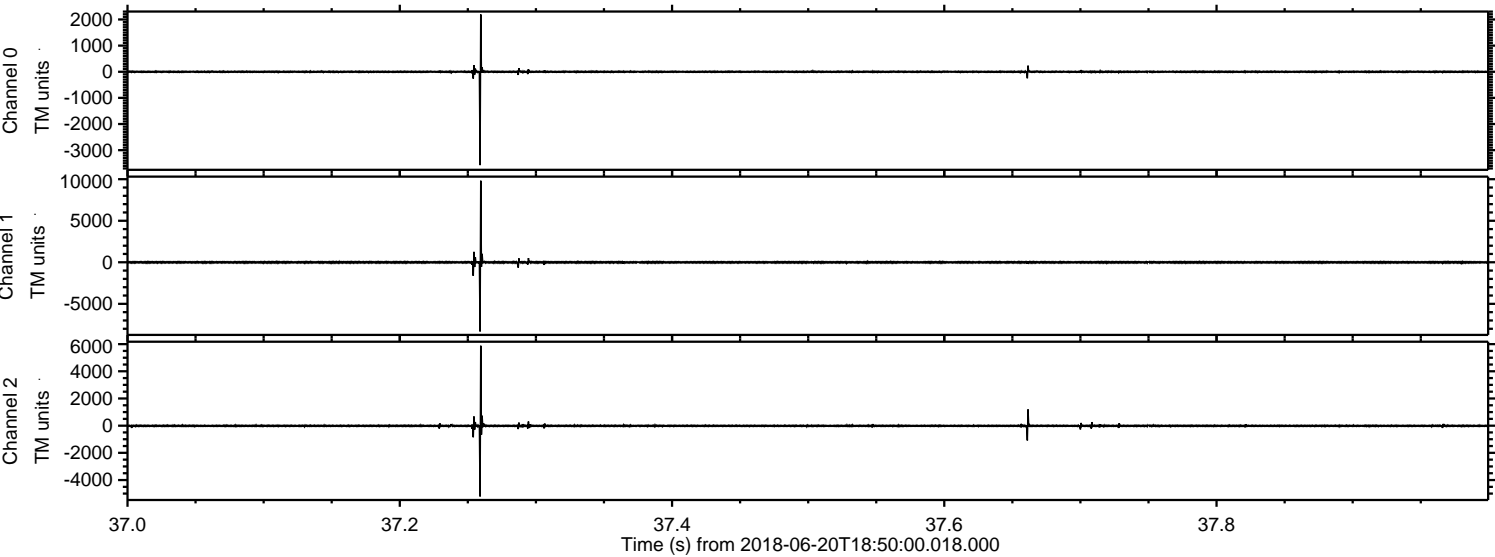


ELMAVAN 3D WAVEFORMS (Measured data sampled at 50 kHz) 51000 packets of 144 samples from 2018-06-20T18:50:00.018.000. Part 117/147

Processed Wed Jun 20 20:57:36 2018 by ELM ver.2012-10-06 from 001__elm20180620_184959__dat00.bin

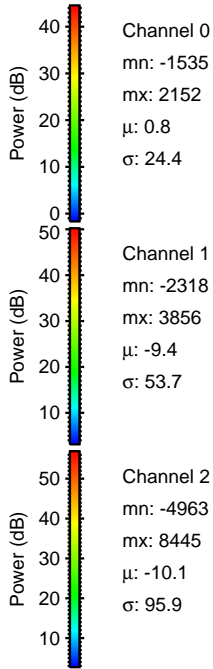
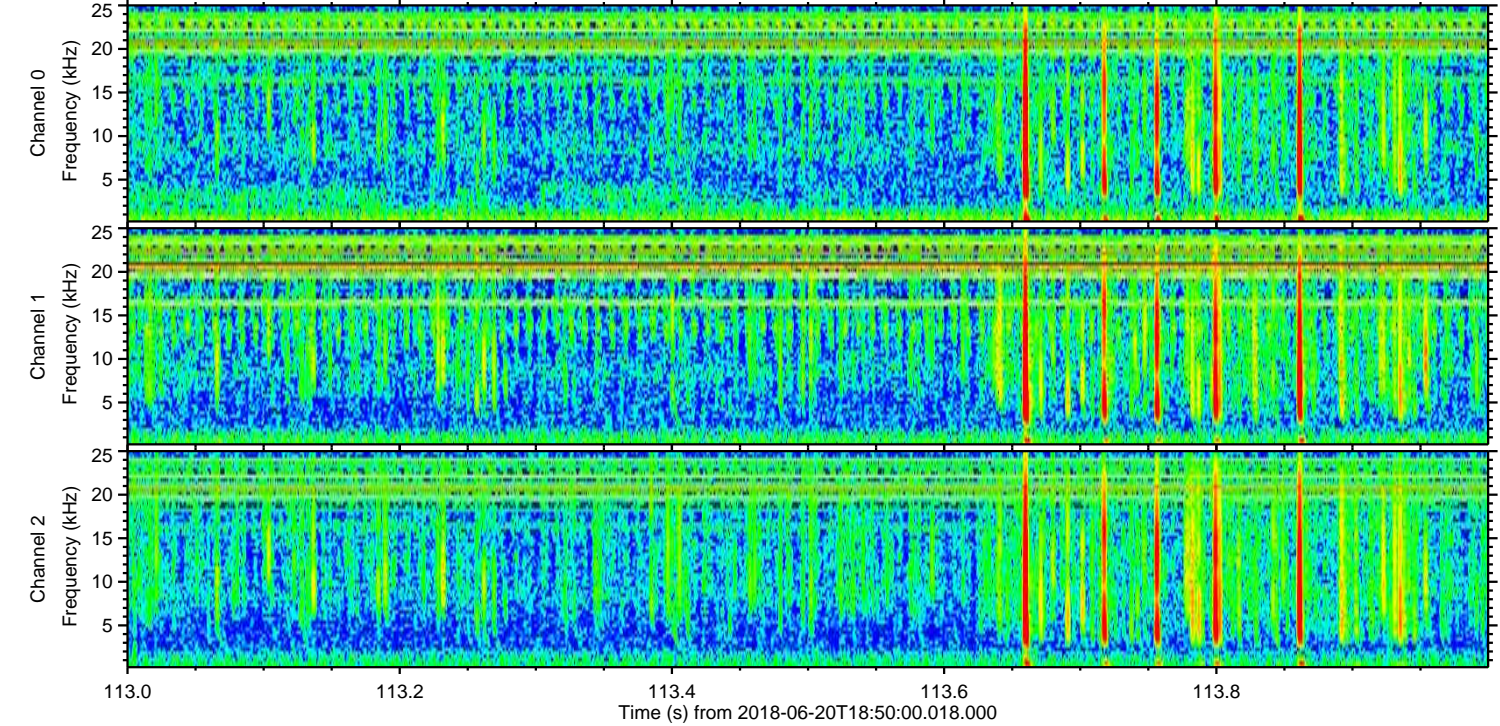
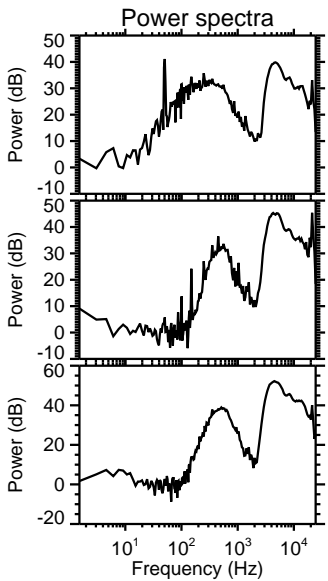
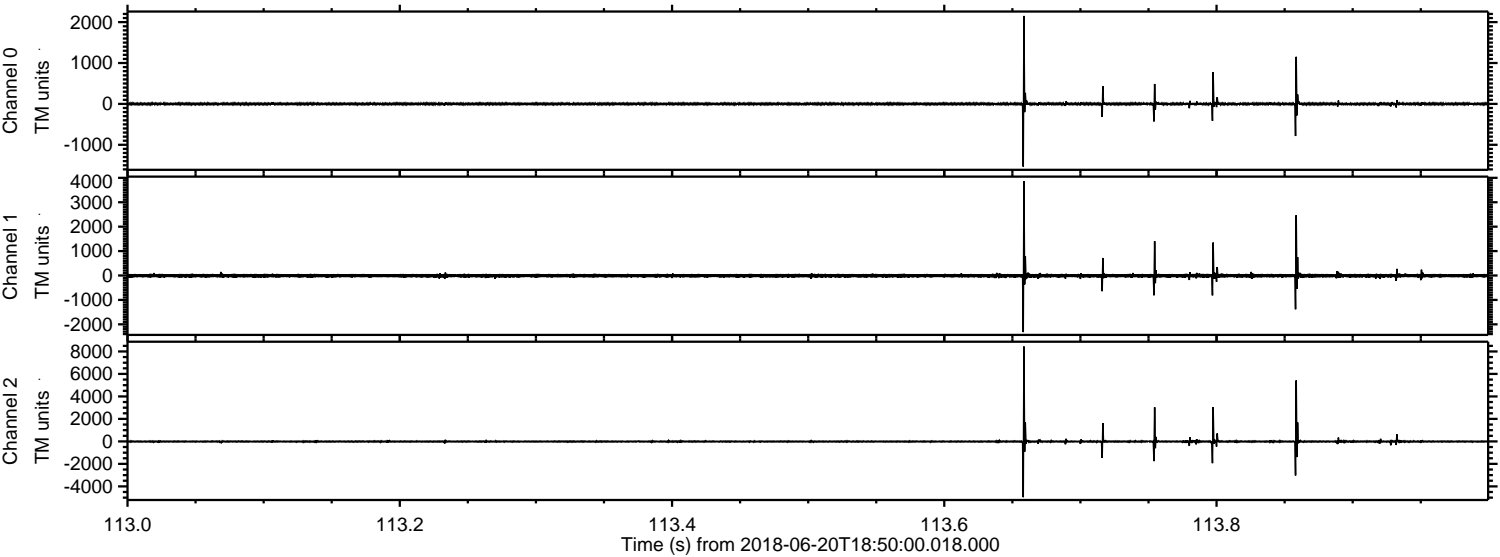


Processed Wed Jun 20 20:57:37 2018 by ELM ver.2012-10-06 from 001__elm20180620_184959__dat00.bin



ELMAVAN 3D WAVEFORMS (Measured data sampled at 50 kHz) 51000 packets of 144 samples from 2018-06-20T18:50:00.018.000. Part 114/147

Processed Wed Jun 20 20:57:37 2018 by ELM ver.2012-10-06 from 001__elm20180620_184959__dat00.bin

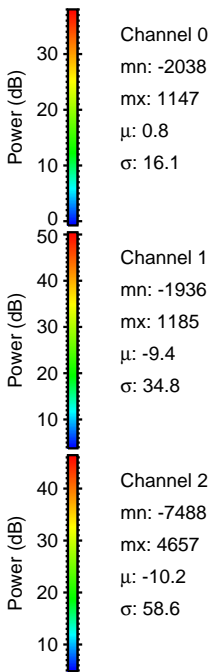
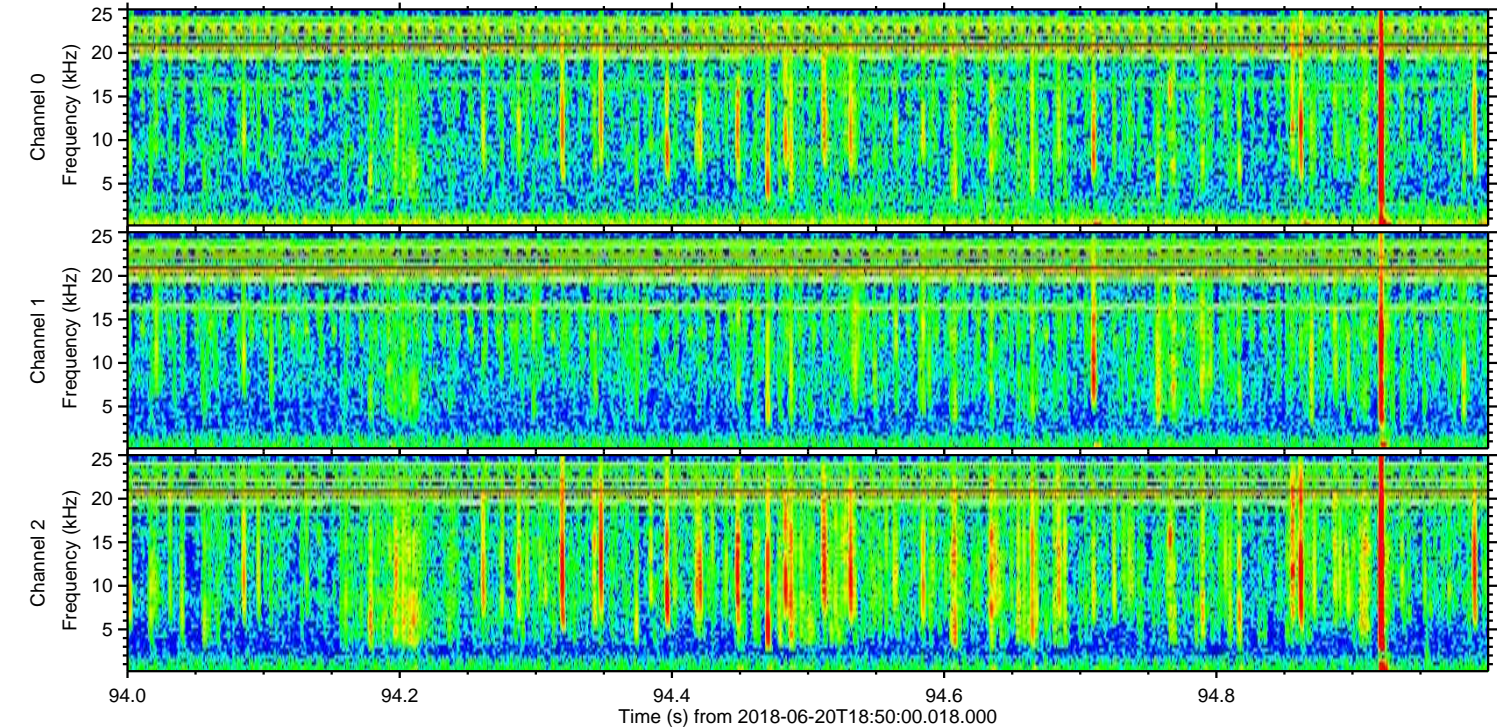
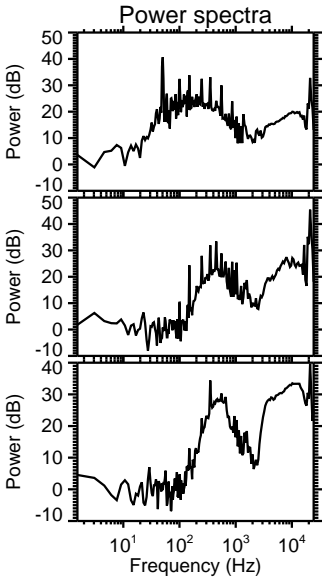
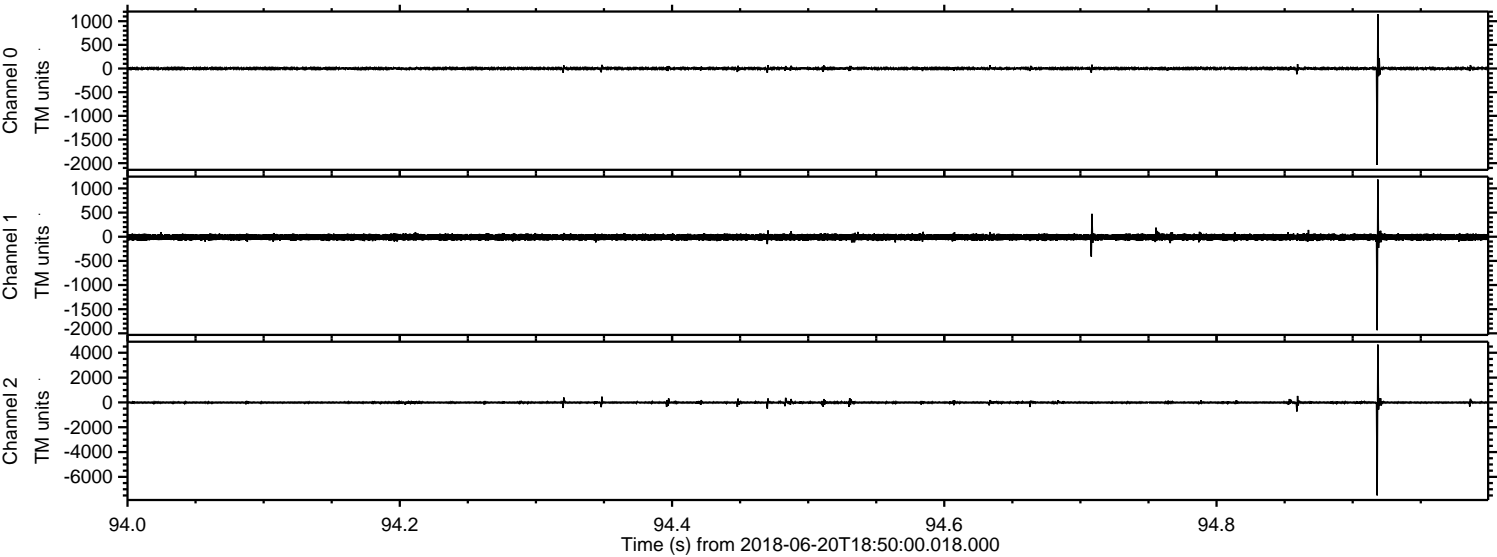


Channel 0
mn: -1535
mx: 2152
 μ : 0.8
 σ : 24.4

Channel 1
mn: -2318
mx: 3856
 μ : -9.4
 σ : 53.7

Channel 2
mn: -4963
mx: 8445
 μ : -10.1
 σ : 95.9

Processed Wed Jun 20 20:57:38 2018 by ELM ver.2012-10-06 from 001__elm20180620_184959__dat00.bin

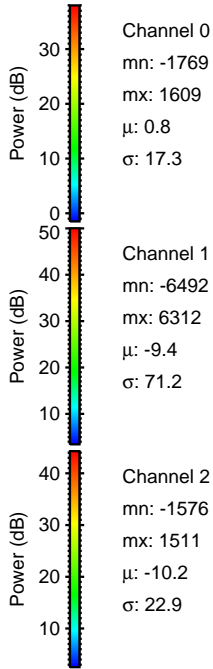
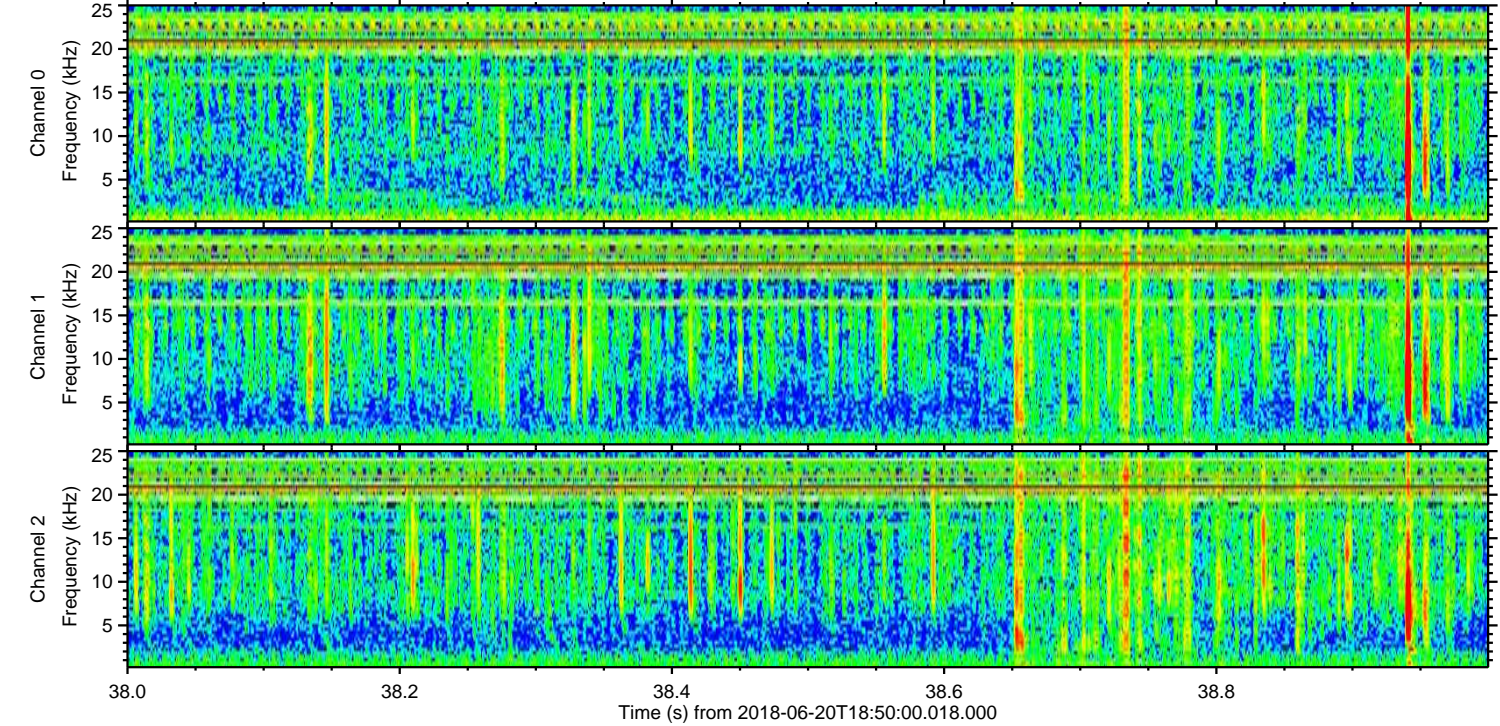
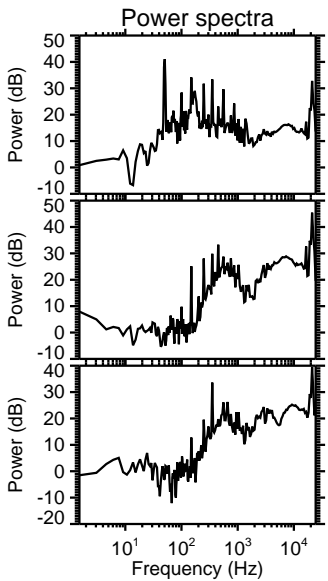
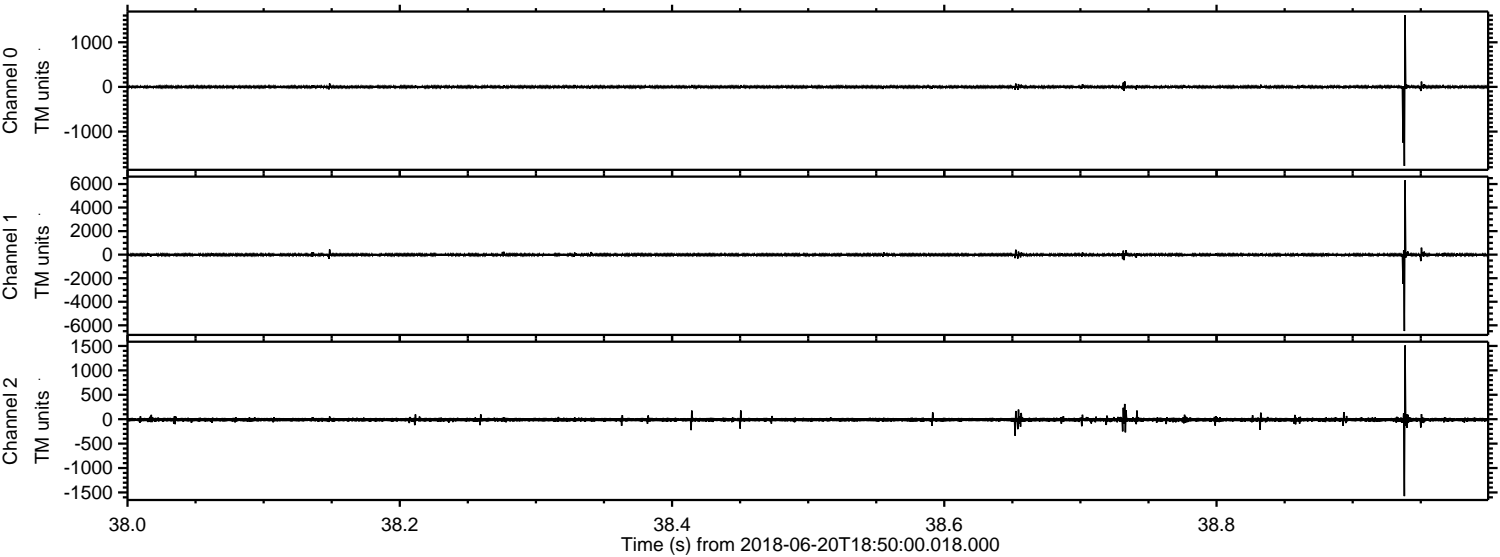


Channel 0
mn: -2038
mx: 1147
 μ : 0.8
 σ : 16.1

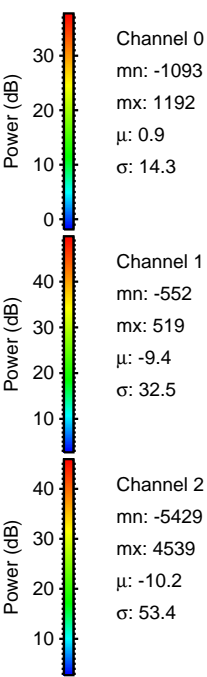
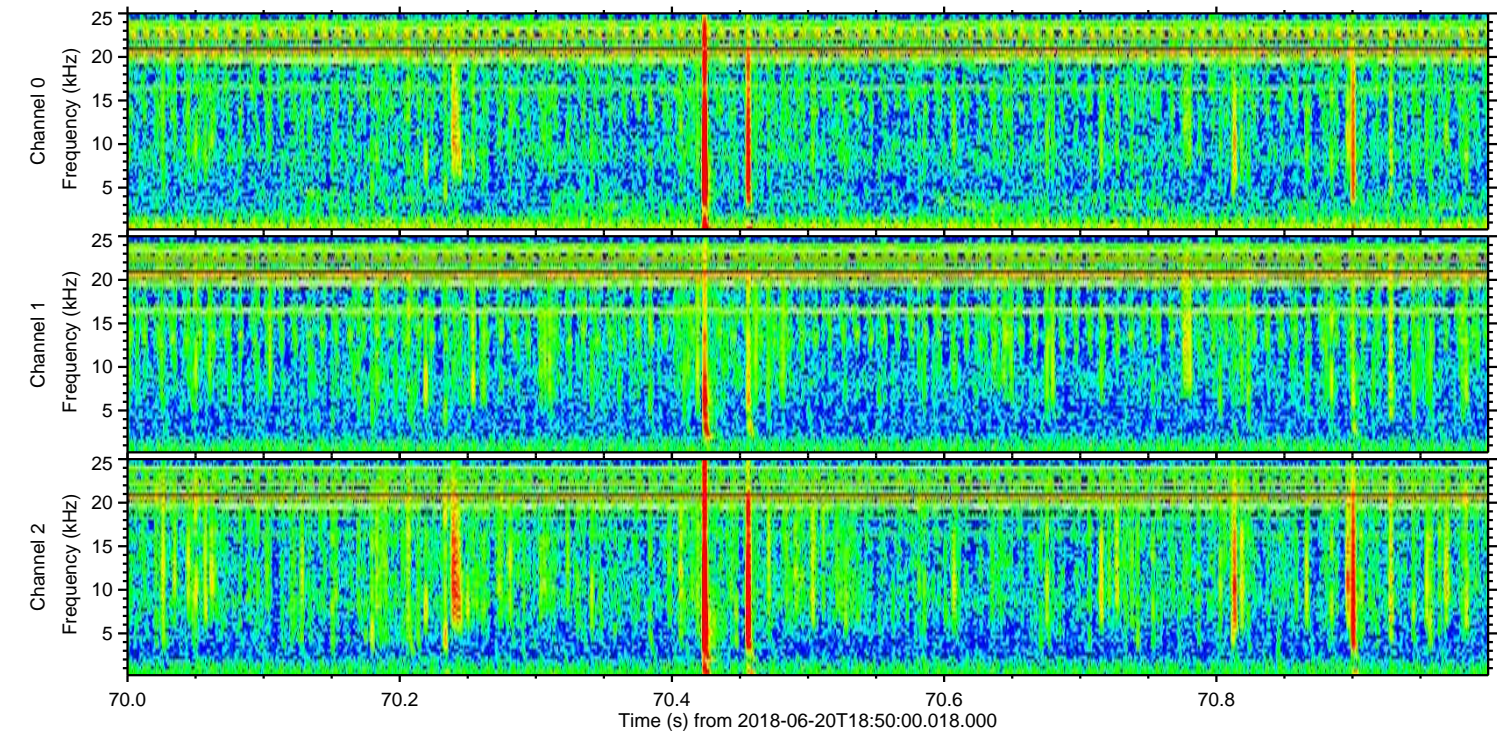
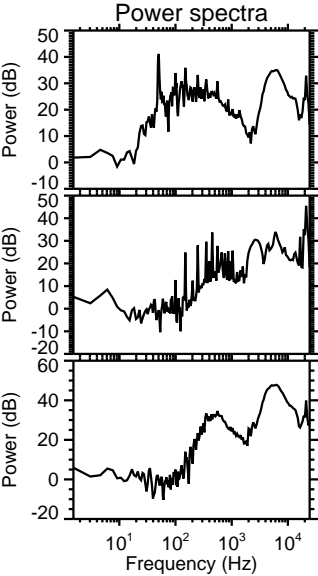
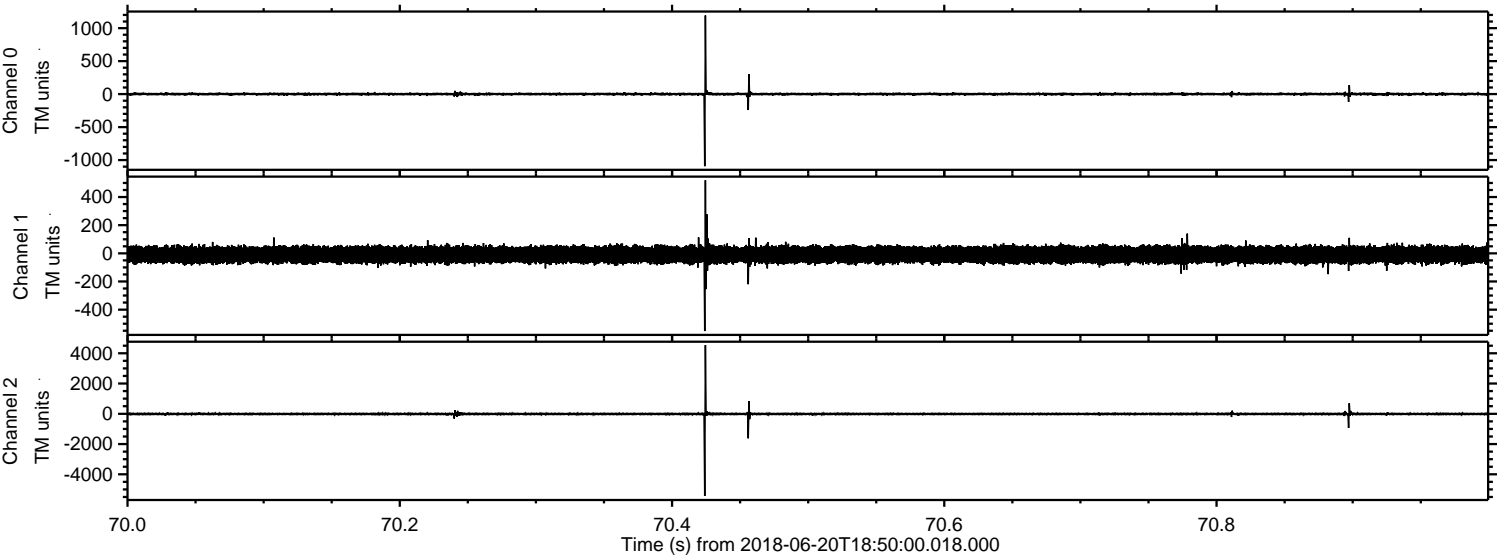
Channel 1
mn: -1936
mx: 1185
 μ : -9.4
 σ : 34.8

Channel 2
mn: -7488
mx: 4657
 μ : -10.2
 σ : 58.6

Processed Wed Jun 20 20:57:39 2018 by ELM ver.2012-10-06 from 001__elm20180620_184959__dat00.bin



Processed Wed Jun 20 20:57:40 2018 by ELM ver.2012-10-06 from 001__elm20180620_184959__dat00.bin



Processed Wed Jun 20 20:57:41 2018 by ELM ver.2012-10-06 from 001__elm20180620_184959__dat00.bin

