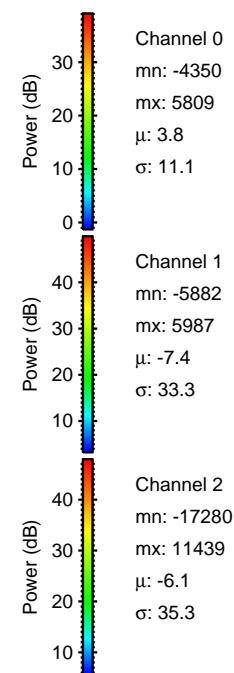
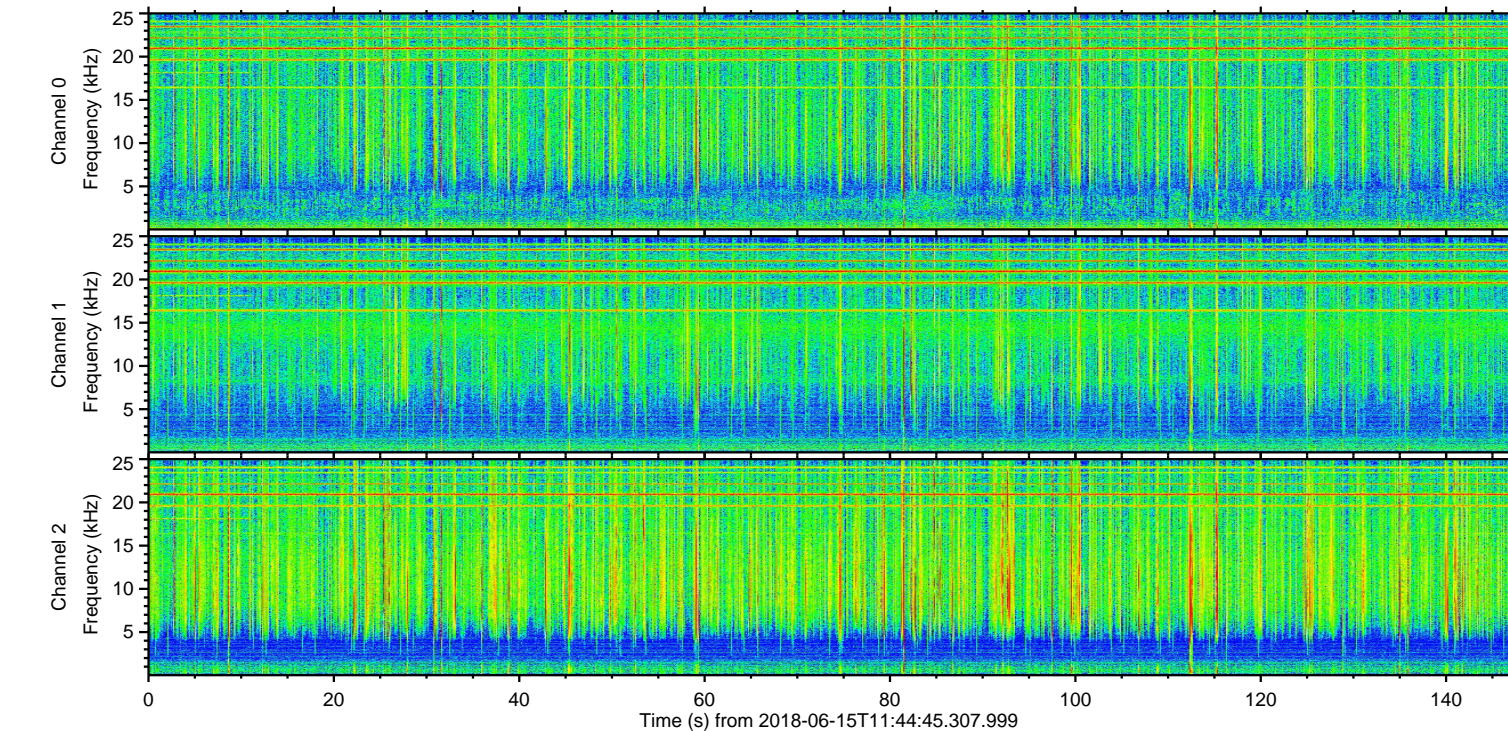
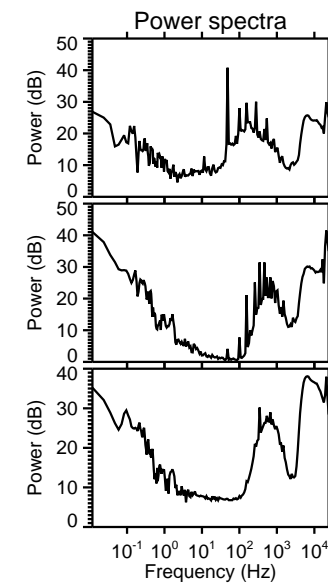
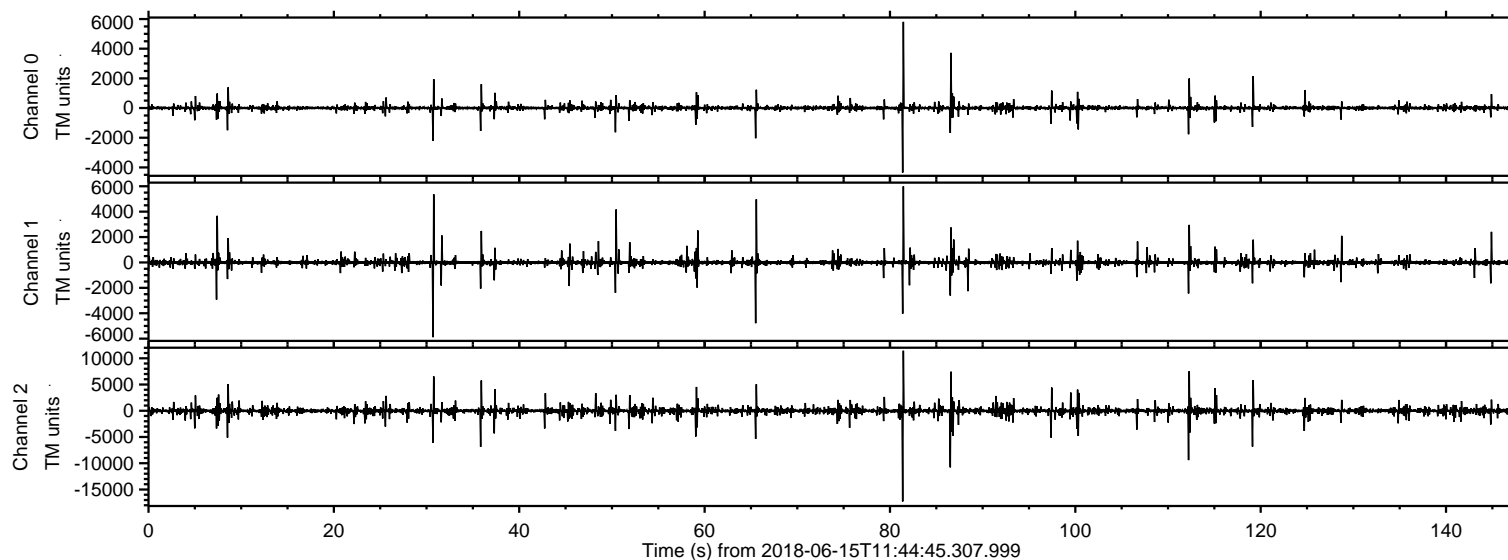
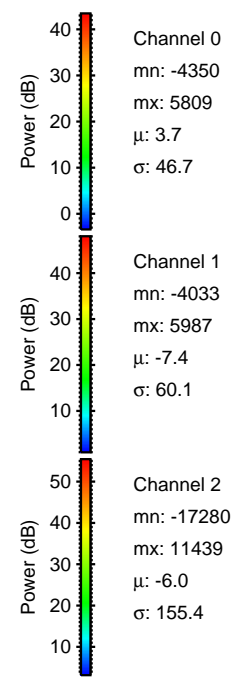
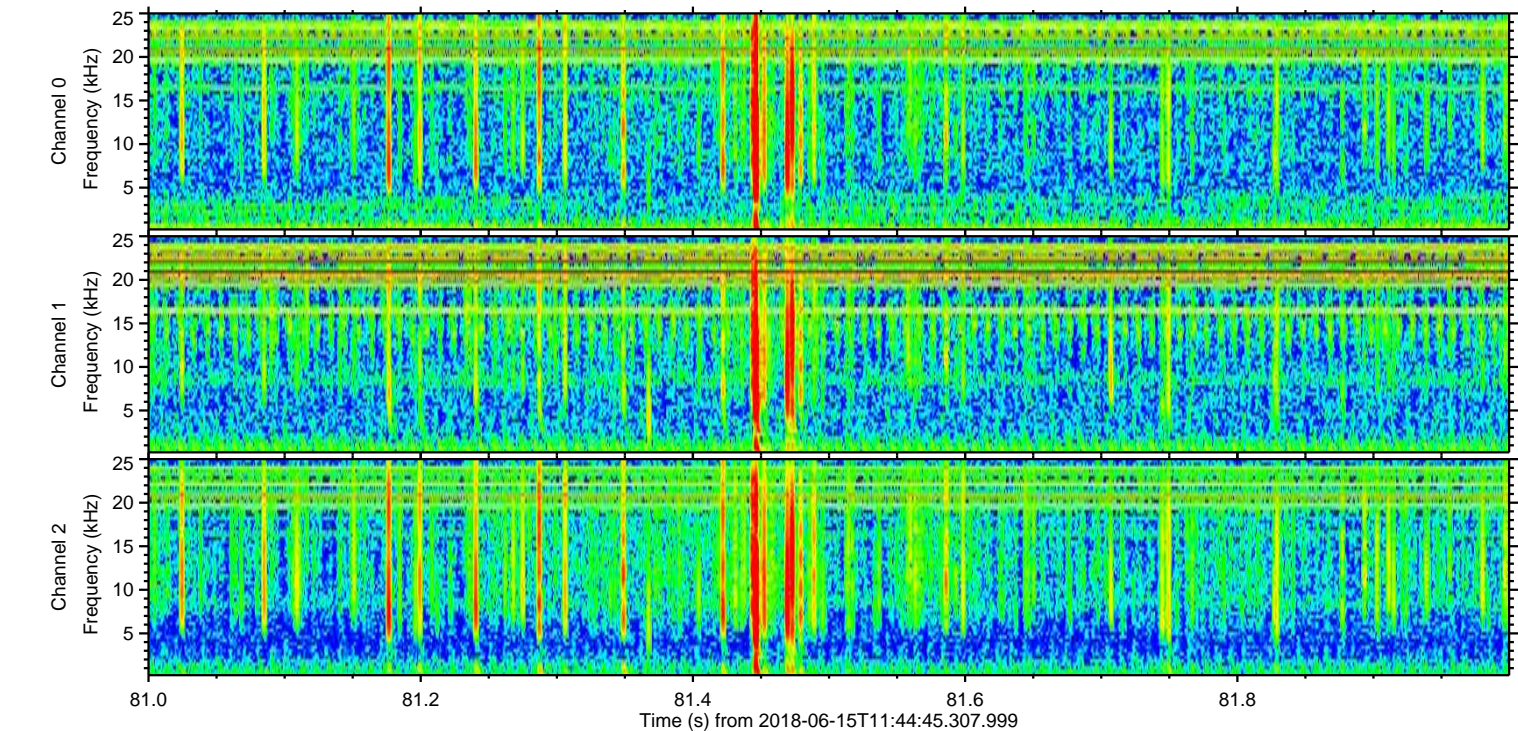
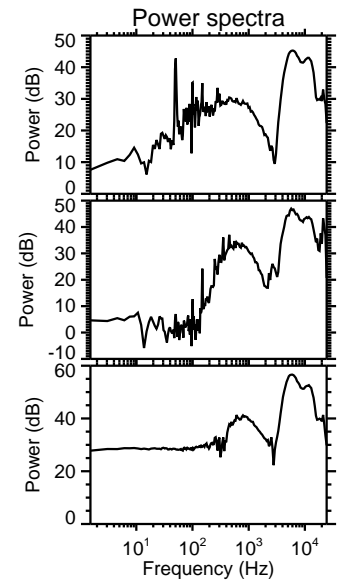
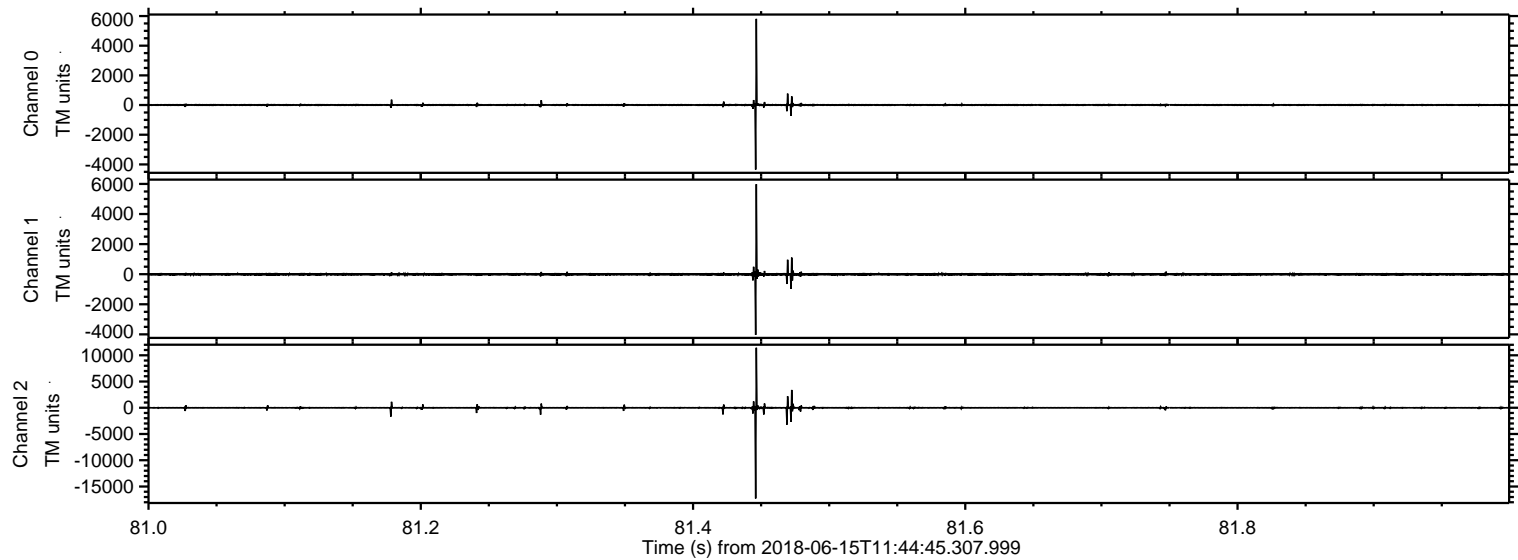


ELMAVAN 3D WAVEFORMS (Measured data sampled at 50 kHz) 51000 packets of 144 samples from 2018-06-15T11:44:45.307.999.

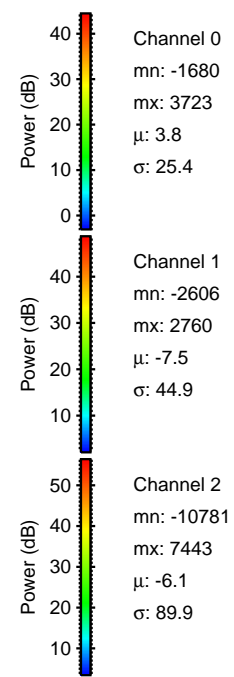
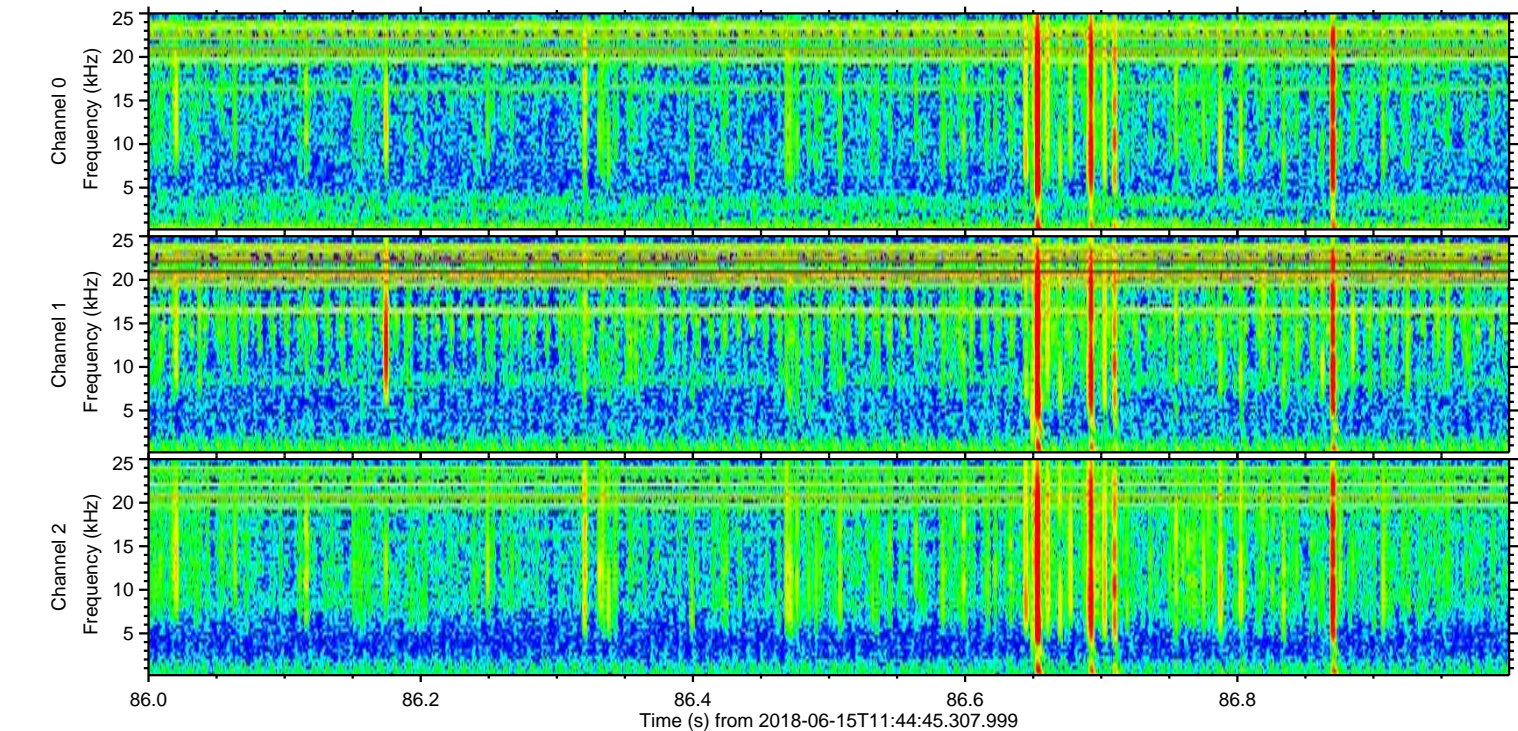
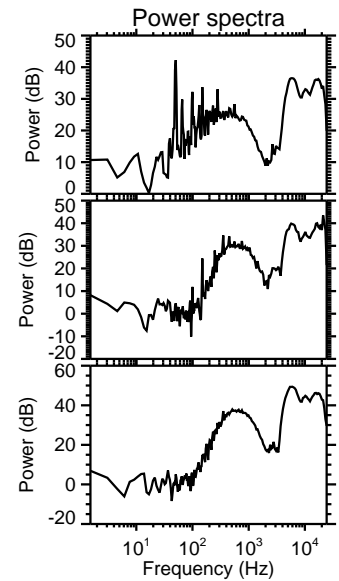
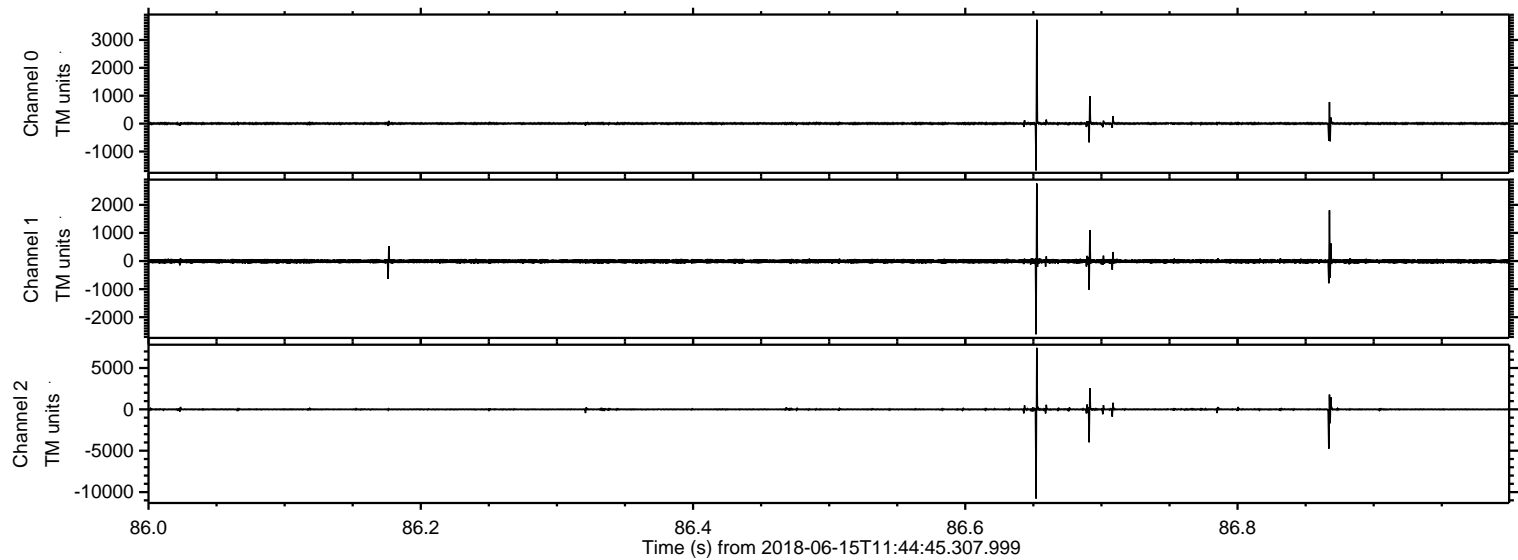
Processed Fri Jun 15 13:52:36 2018 by ELM ver.2012-10-06 from 001__elm20180615_114444__dat00.bin



Processed Fri Jun 15 13:52:43 2018 by ELM ver.2012-10-06 from 001__elm20180615_114444__dat00.bin



Processed Fri Jun 15 13:52:43 2018 by ELM ver.2012-10-06 from 001__elm20180615_114444__dat00.bin



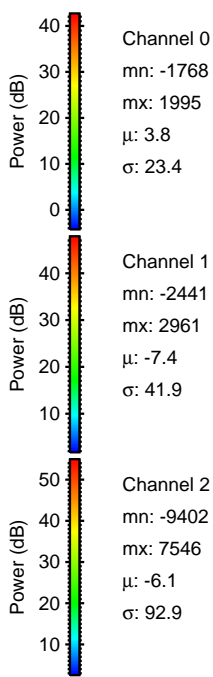
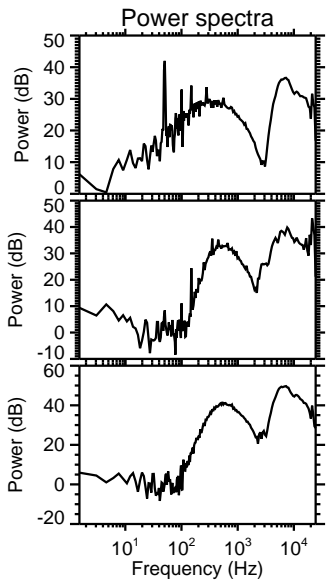
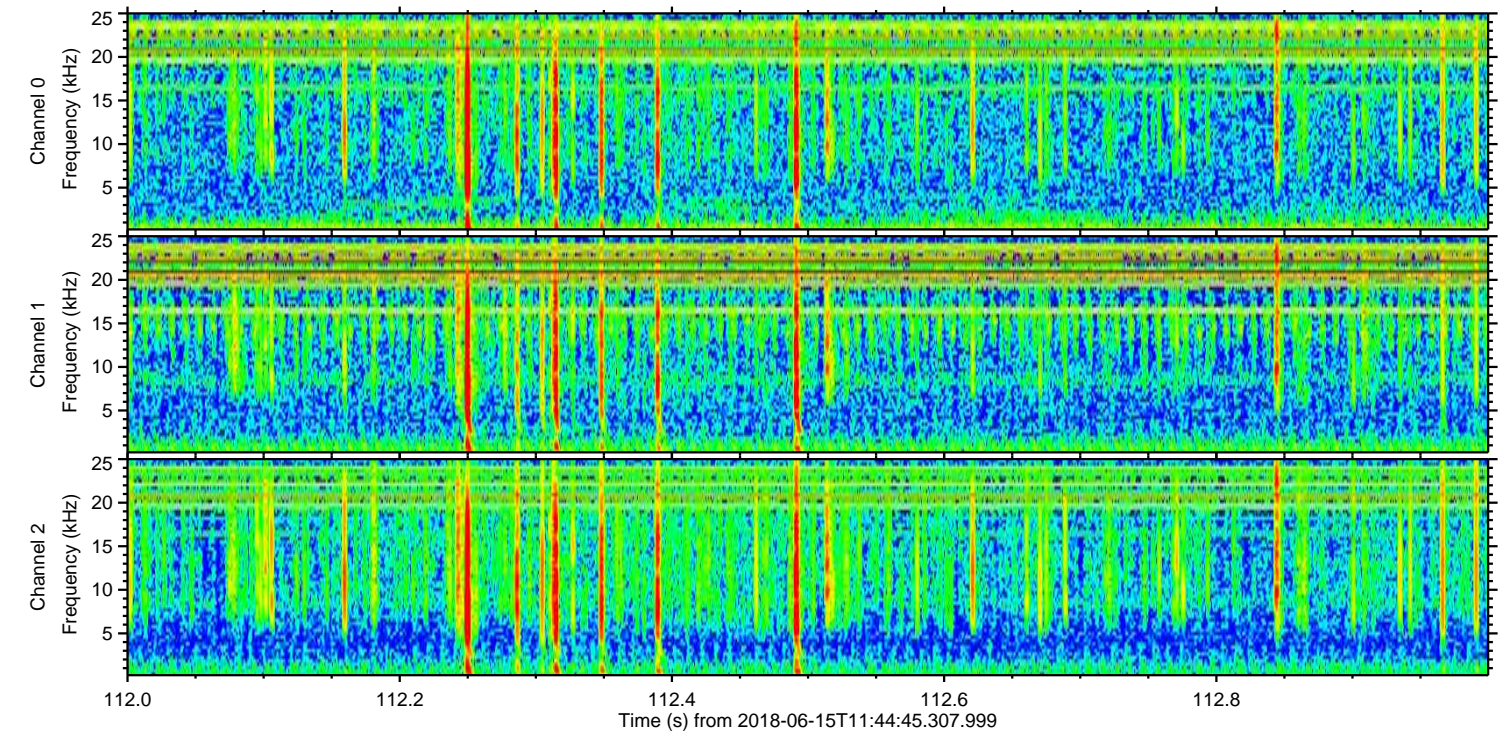
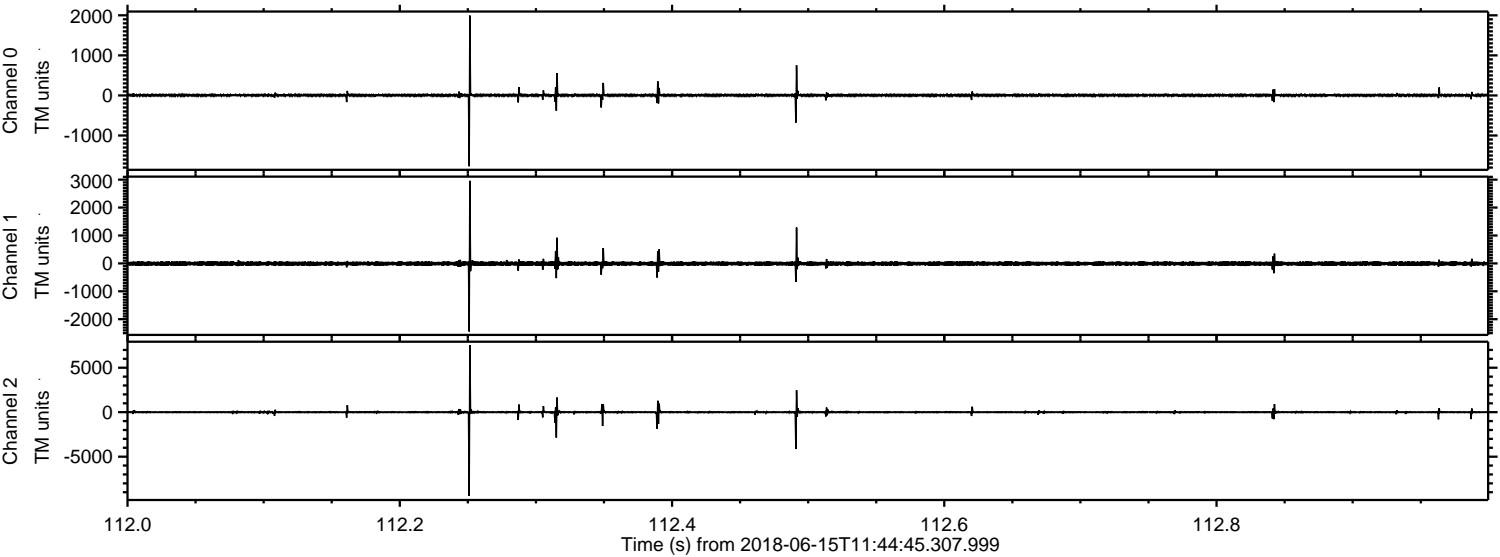
Channel 0
mn: -1680
mx: 3723
 μ : 3.8
 σ : 25.4

Channel 1
mn: -2606
mx: 2760
 μ : -7.5
 σ : 44.9

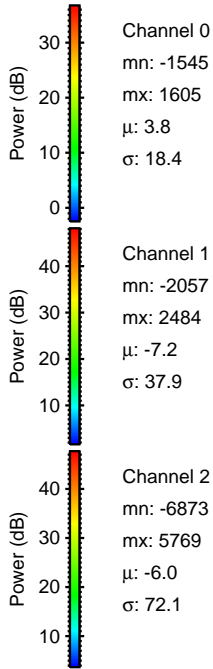
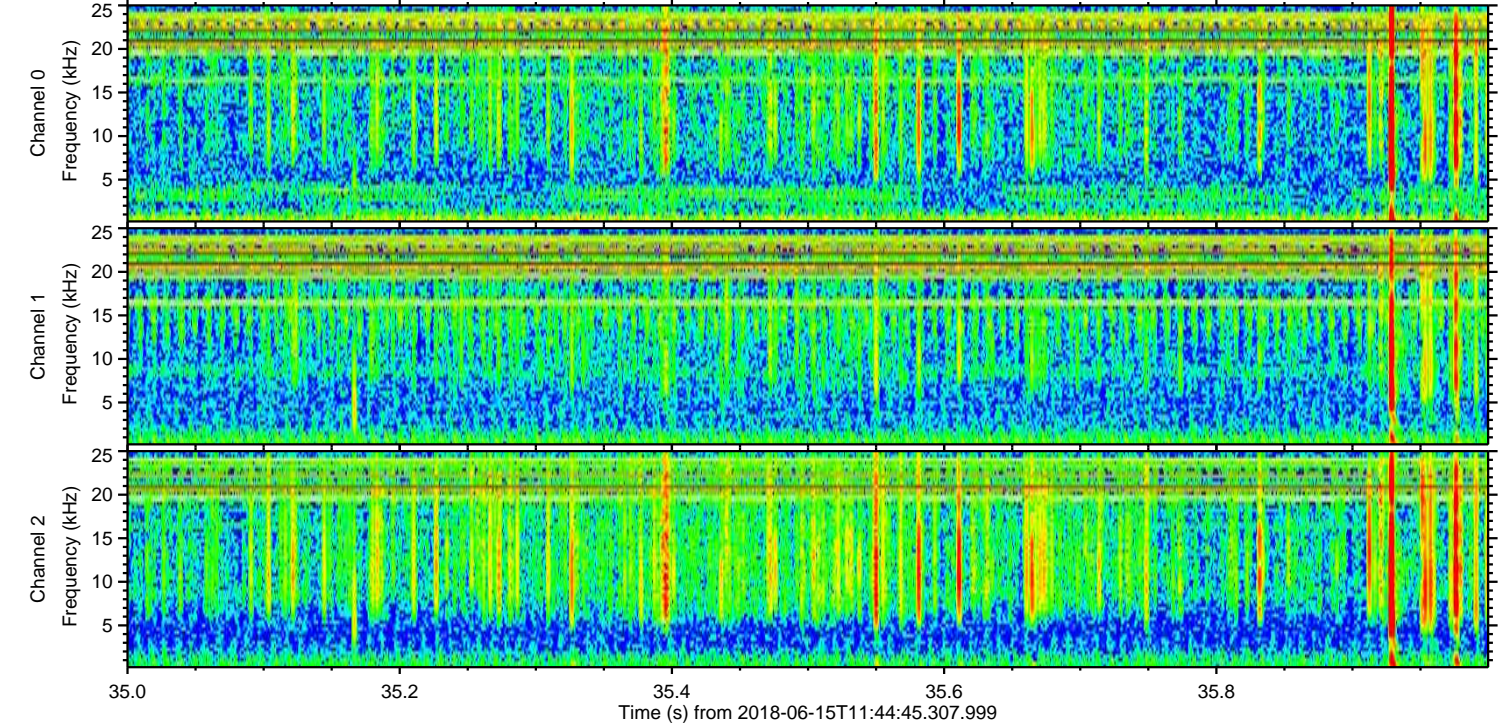
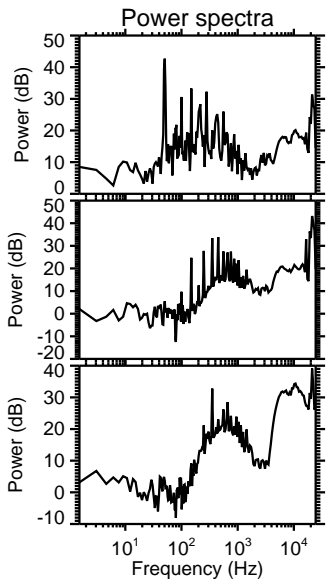
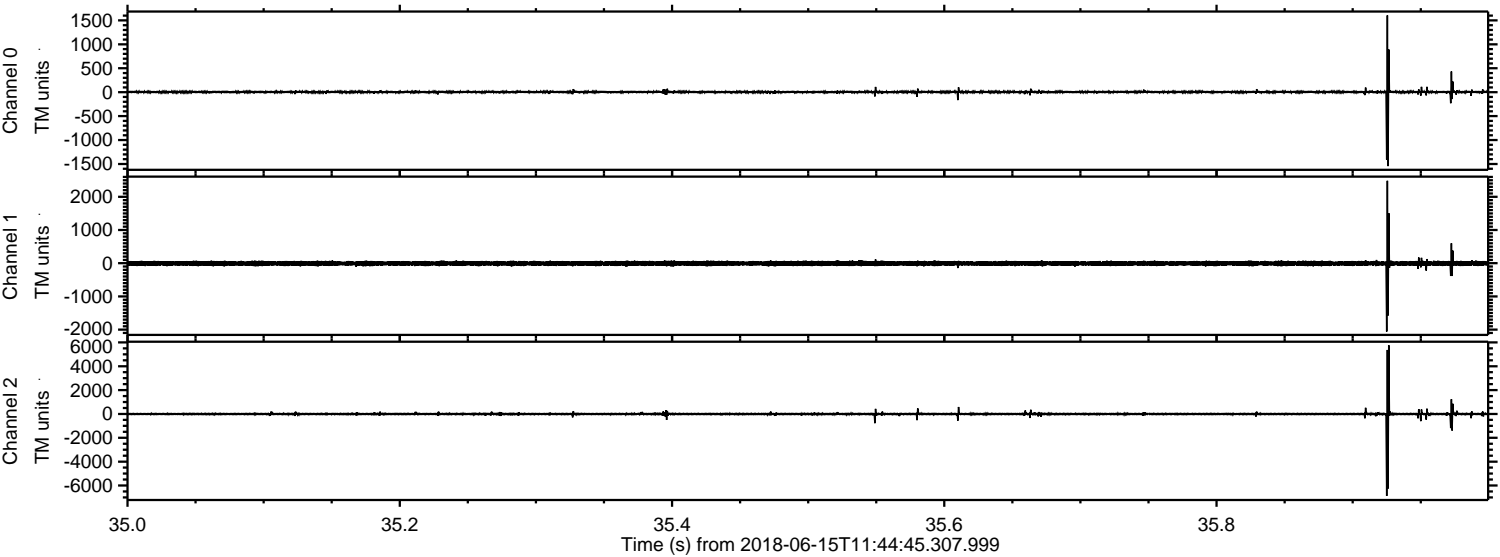
Channel 2
mn: -10781
mx: 7443
 μ : -6.1
 σ : 89.9

ELMAVAN 3D WAVEFORMS (Measured data sampled at 50 kHz) 51000 packets of 144 samples from 2018-06-15T11:44:45.307.999. Part 113/147

Processed Fri Jun 15 13:52:44 2018 by ELM ver.2012-10-06 from 001__elm20180615_114444__dat00.bin



Processed Fri Jun 15 13:52:45 2018 by ELM ver.2012-10-06 from 001__elm20180615_114444__dat00.bin



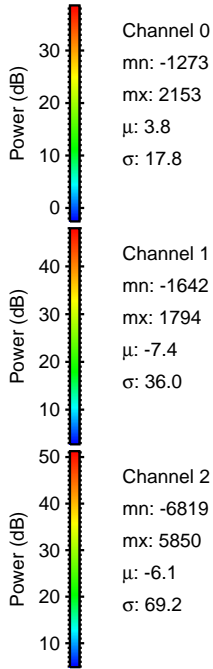
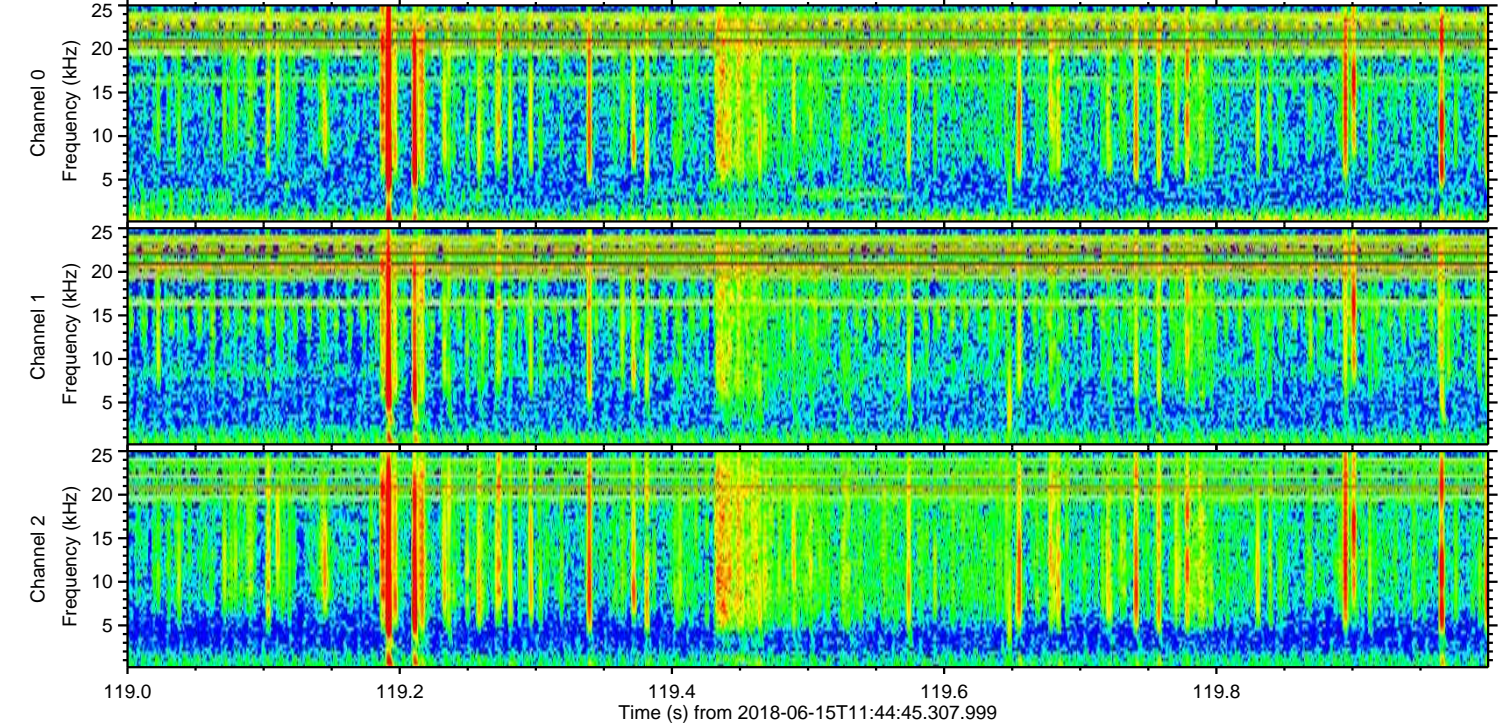
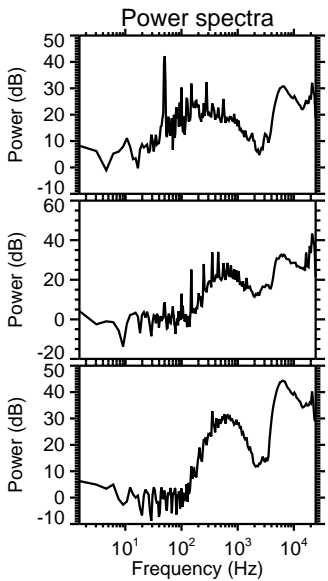
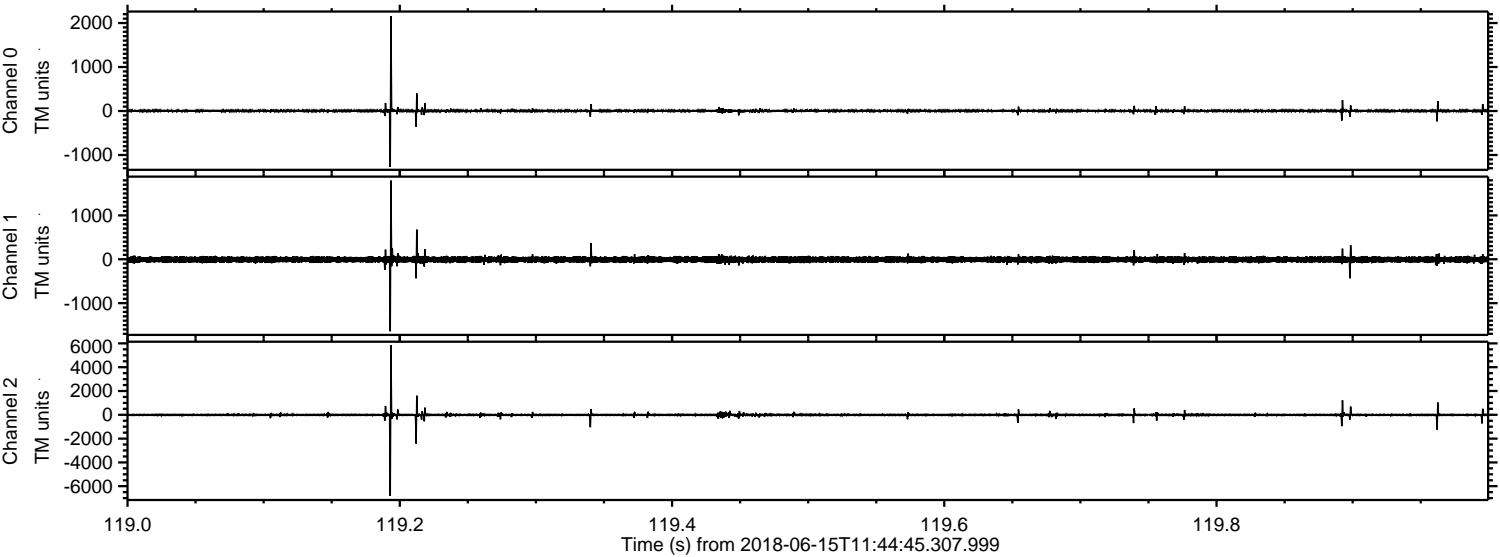
Channel 0
mn: -1545
mx: 1605
 μ : 3.8
 σ : 18.4

Channel 1
mn: -2057
mx: 2484
 μ : -7.2
 σ : 37.9

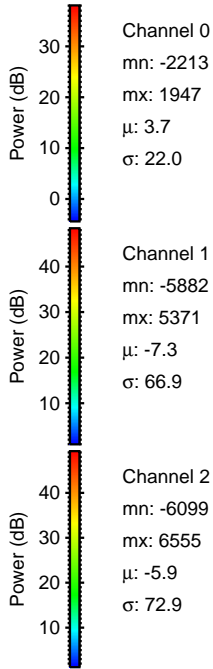
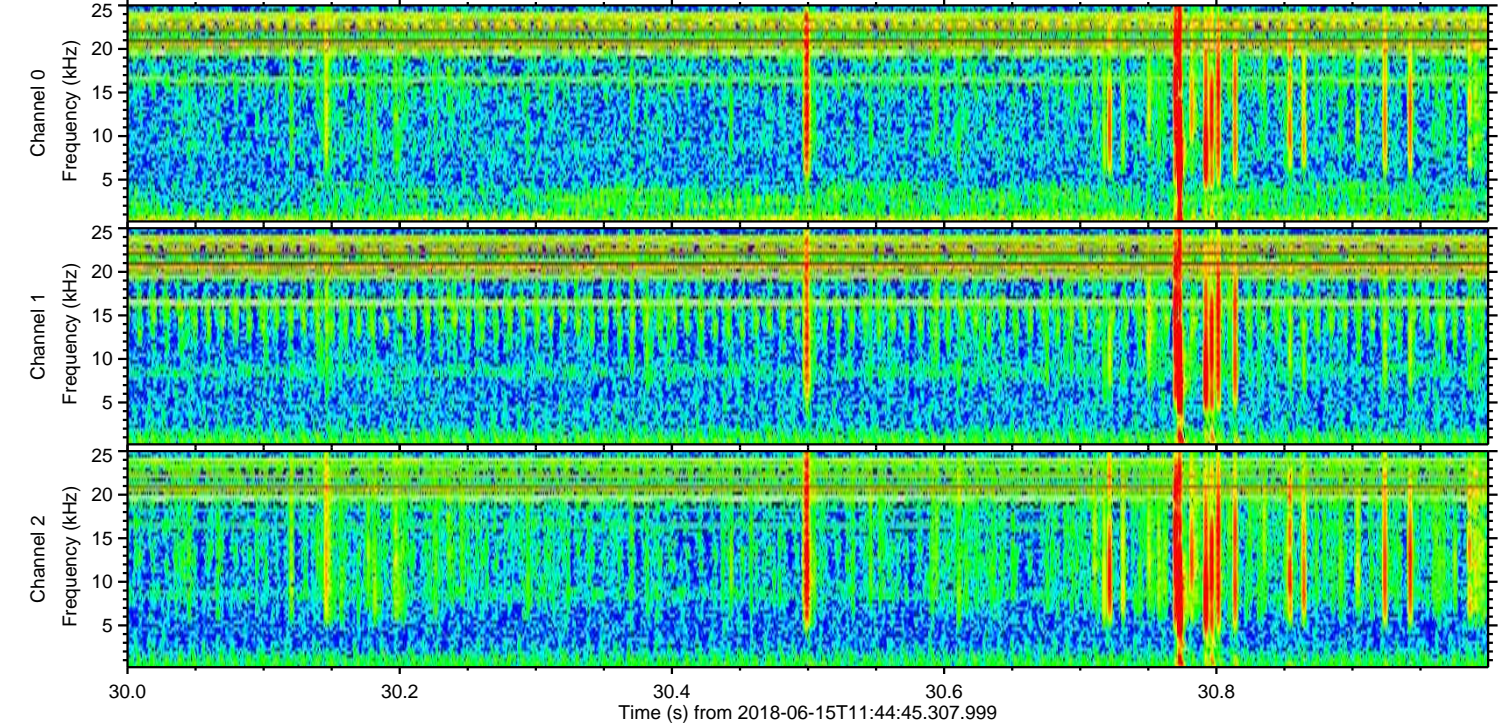
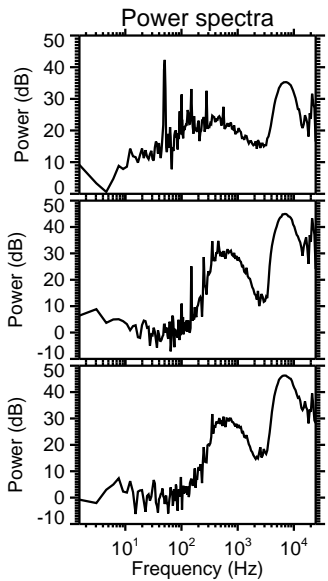
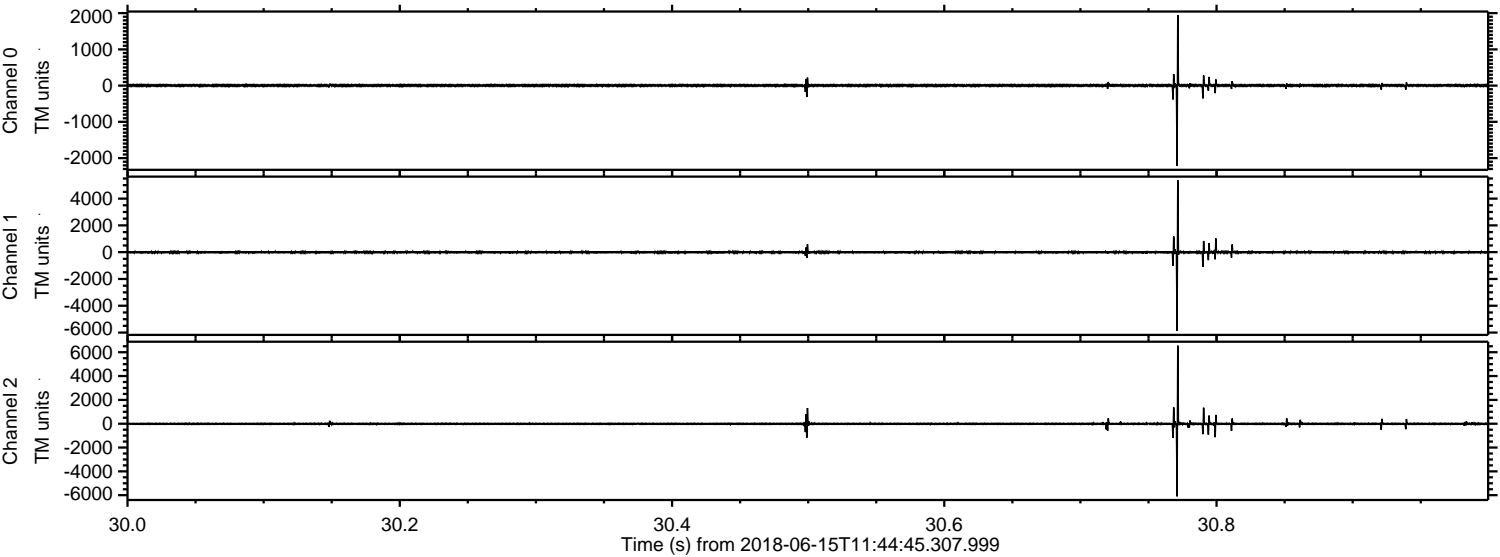
Channel 2
mn: -6873
mx: 5769
 μ : -6.0
 σ : 72.1

ELMAVAN 3D WAVEFORMS (Measured data sampled at 50 kHz) 51000 packets of 144 samples from 2018-06-15T11:44:45.307.999. Part 120/147

Processed Fri Jun 15 13:52:45 2018 by ELM ver.2012-10-06 from 001__elm20180615_114444__dat00.bin



Processed Fri Jun 15 13:52:46 2018 by ELM ver.2012-10-06 from 001__elm20180615_114444__dat00.bin

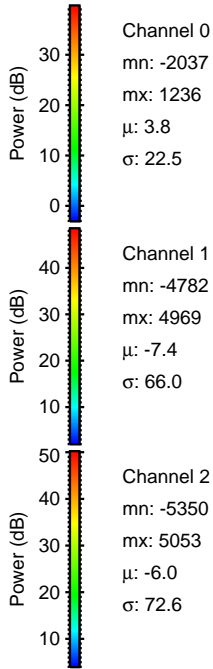
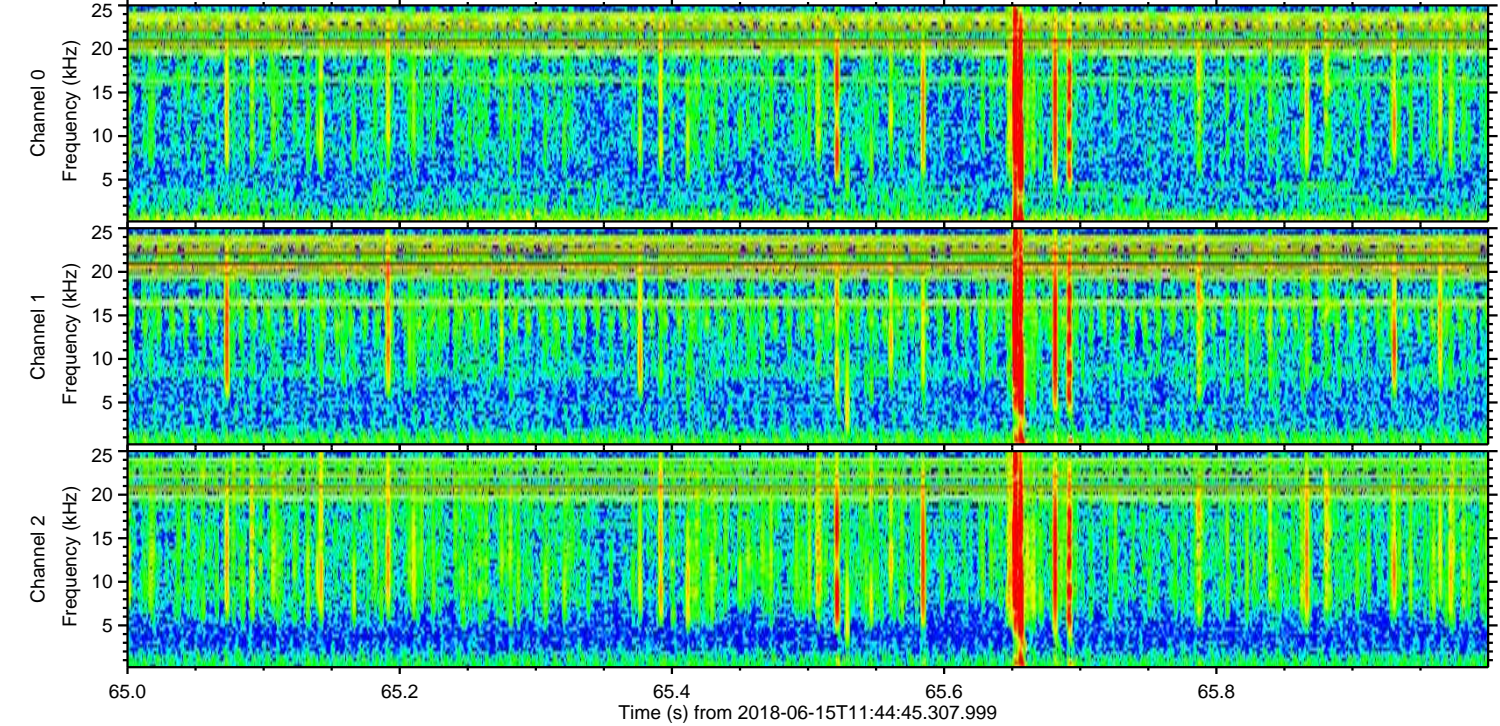
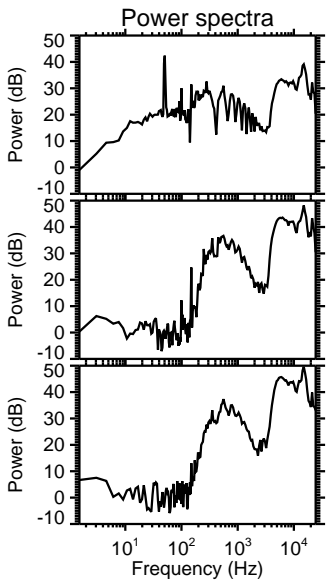
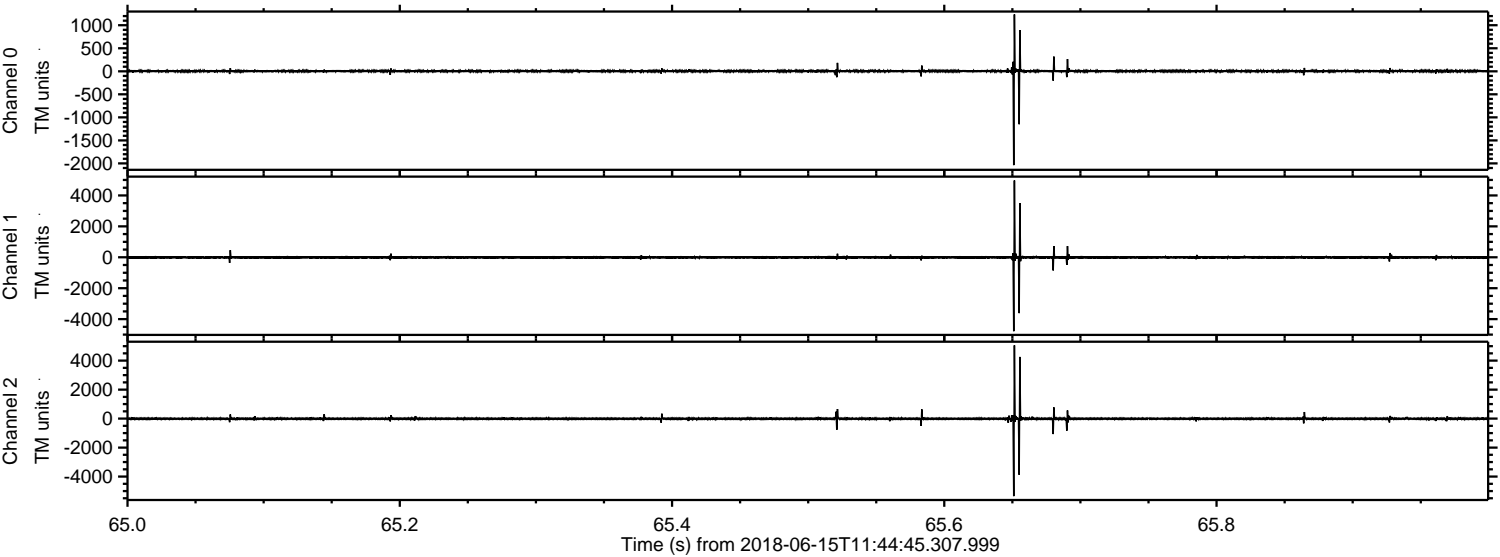


Channel 0
mn: -2213
mx: 1947
 μ : 3.7
 σ : 22.0

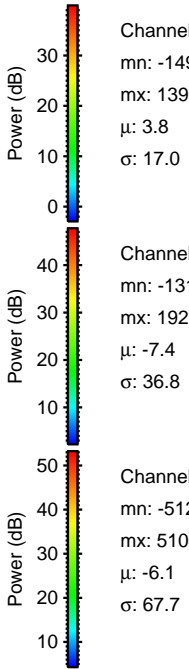
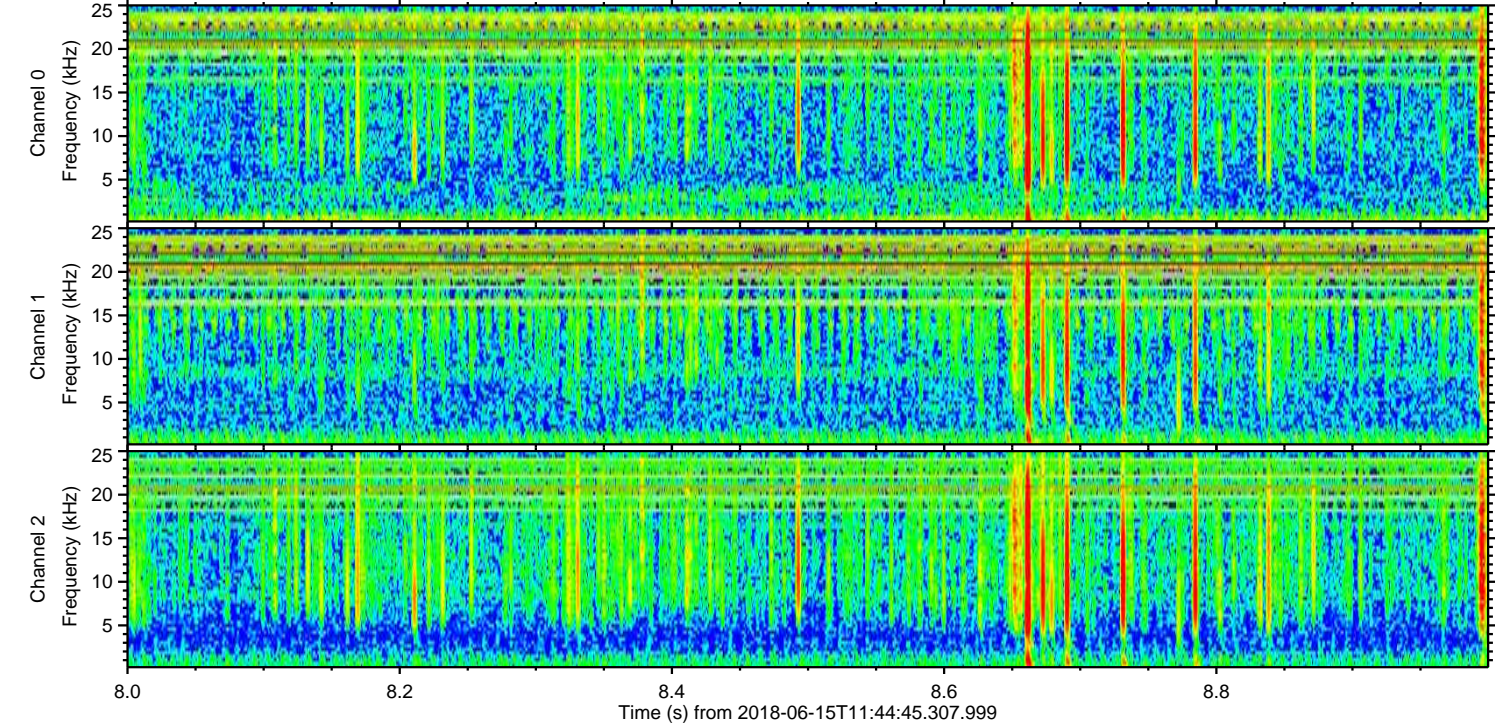
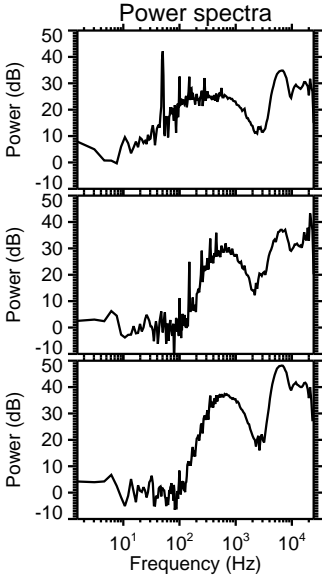
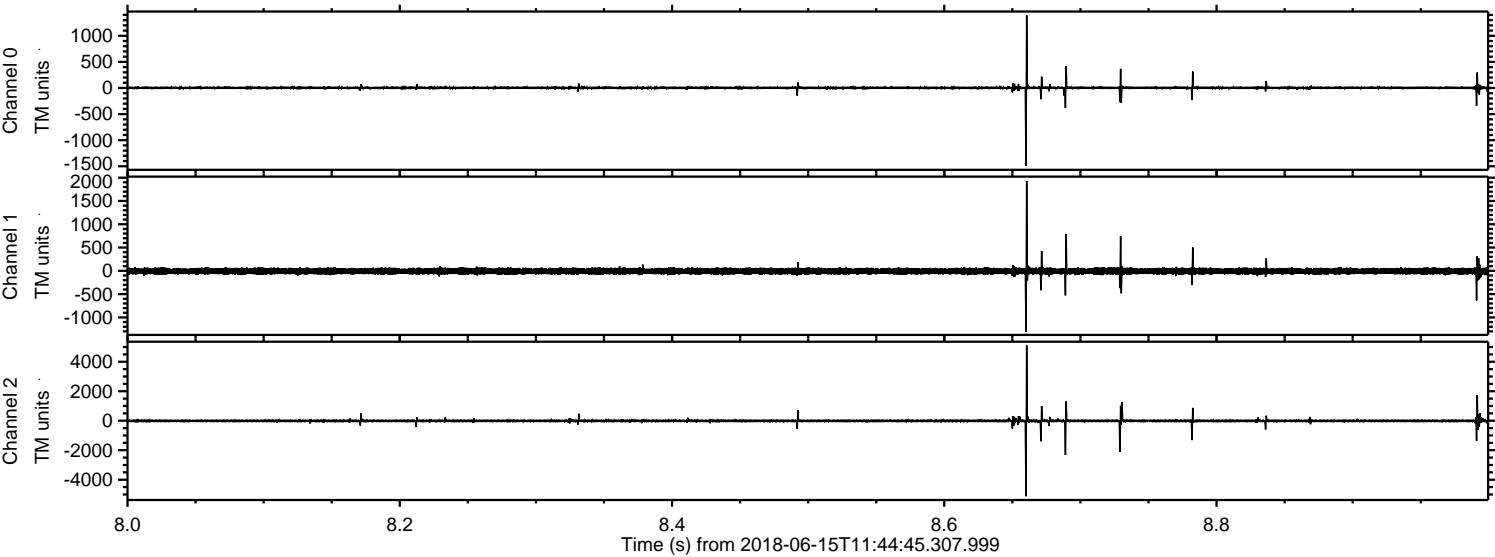
Channel 1
mn: -5882
mx: 5371
 μ : -7.3
 σ : 66.9

Channel 2
mn: -6099
mx: 6555
 μ : -5.9
 σ : 72.9

Processed Fri Jun 15 13:52:46 2018 by ELM ver.2012-10-06 from 001__elm20180615_114444__dat00.bin



Processed Fri Jun 15 13:52:47 2018 by ELM ver.2012-10-06 from 001__elm20180615_114444__dat00.bin



Processed Fri Jun 15 13:52:48 2018 by ELM ver.2012-10-06 from 001__elm20180615_114444__dat00.bin

