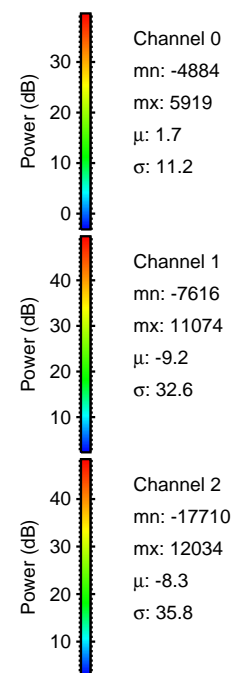
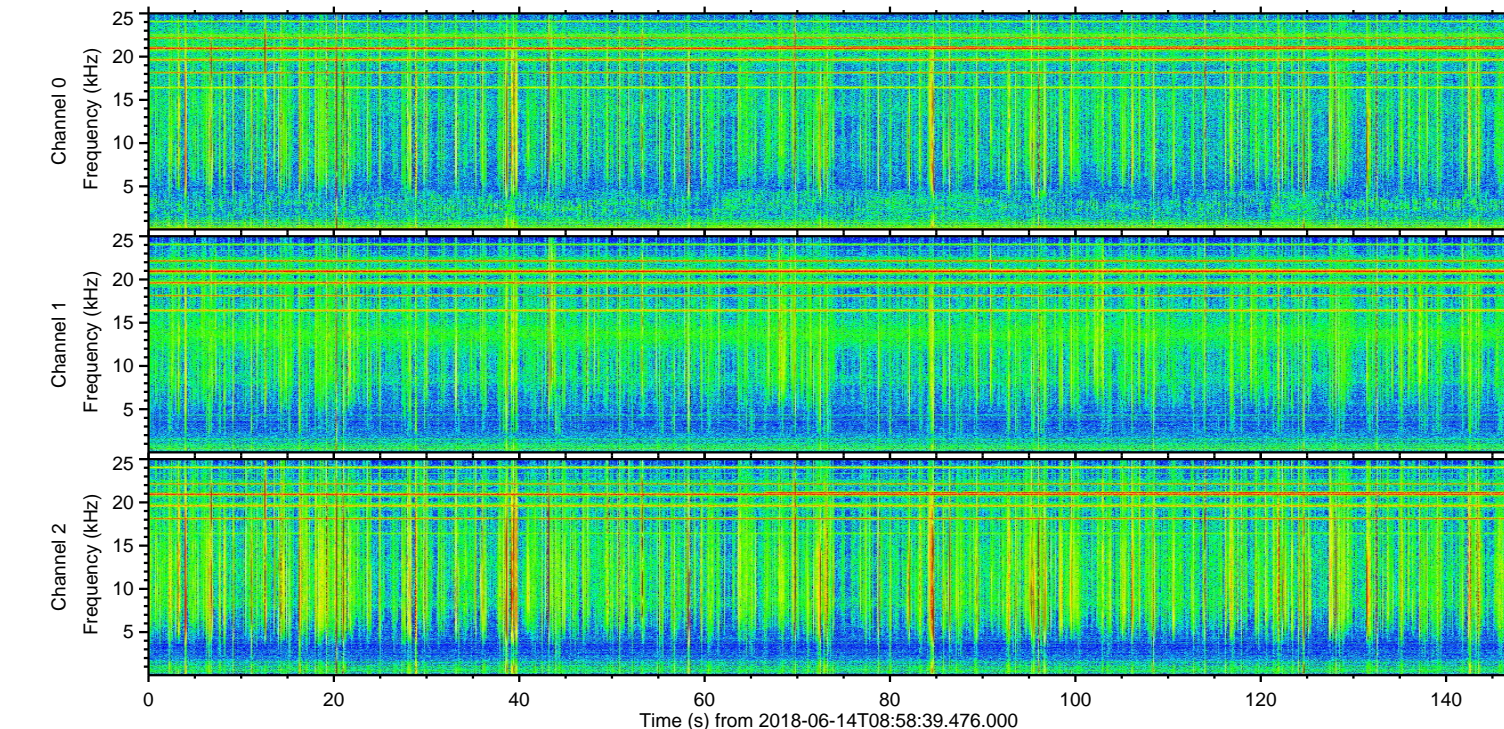
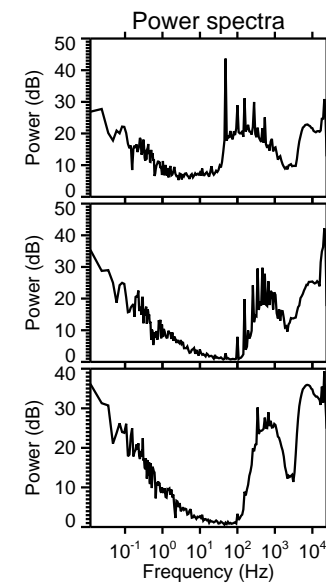
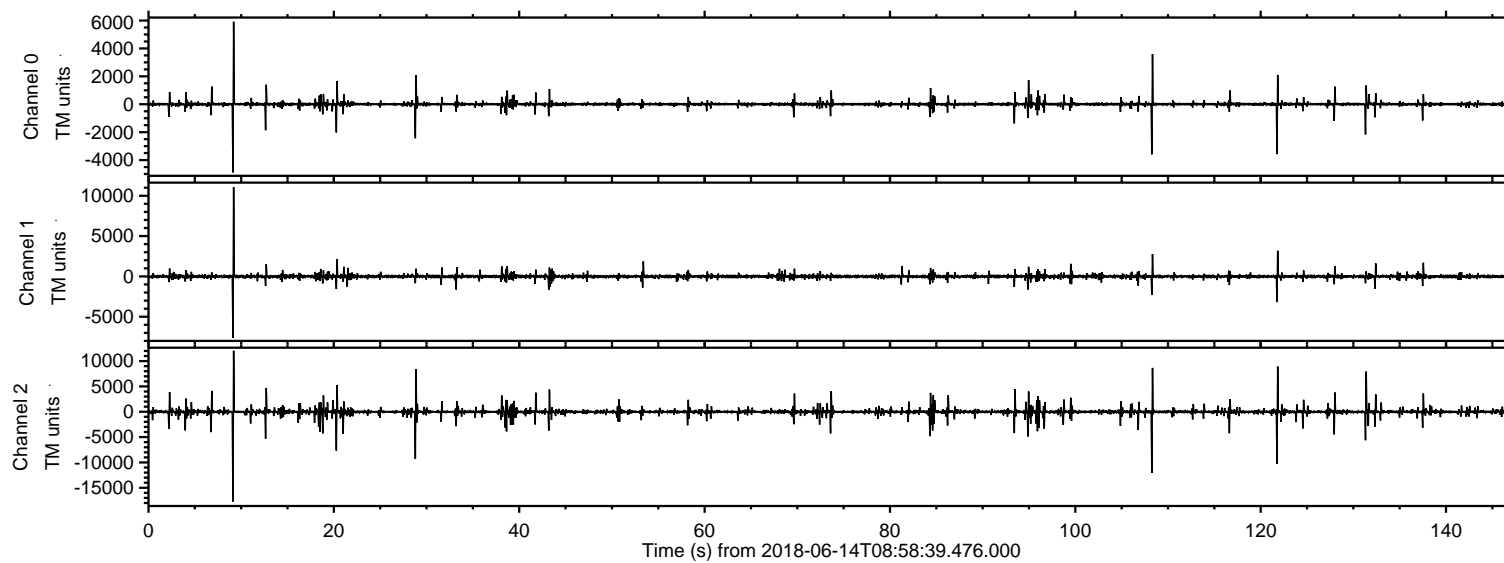


# ELMAVAN 3D WAVEFORMS (Measured data sampled at 50 kHz) 51000 packets of 144 samples from 2018-06-14T08:58:39.476.000.

Processed Thu Jun 14 11:06:41 2018 by ELM ver.2012-10-06 from 001\_\_elm20180614\_085838\_\_dat00.bin



Channel 0  
mn: -4884  
mx: 5919  
 $\mu$ : 1.7  
 $\sigma$ : 11.2

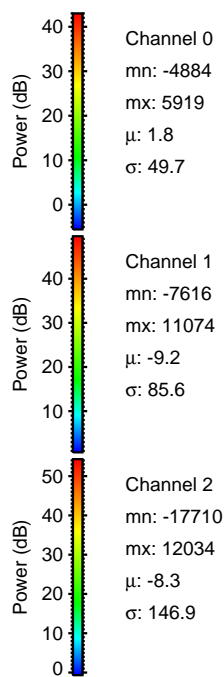
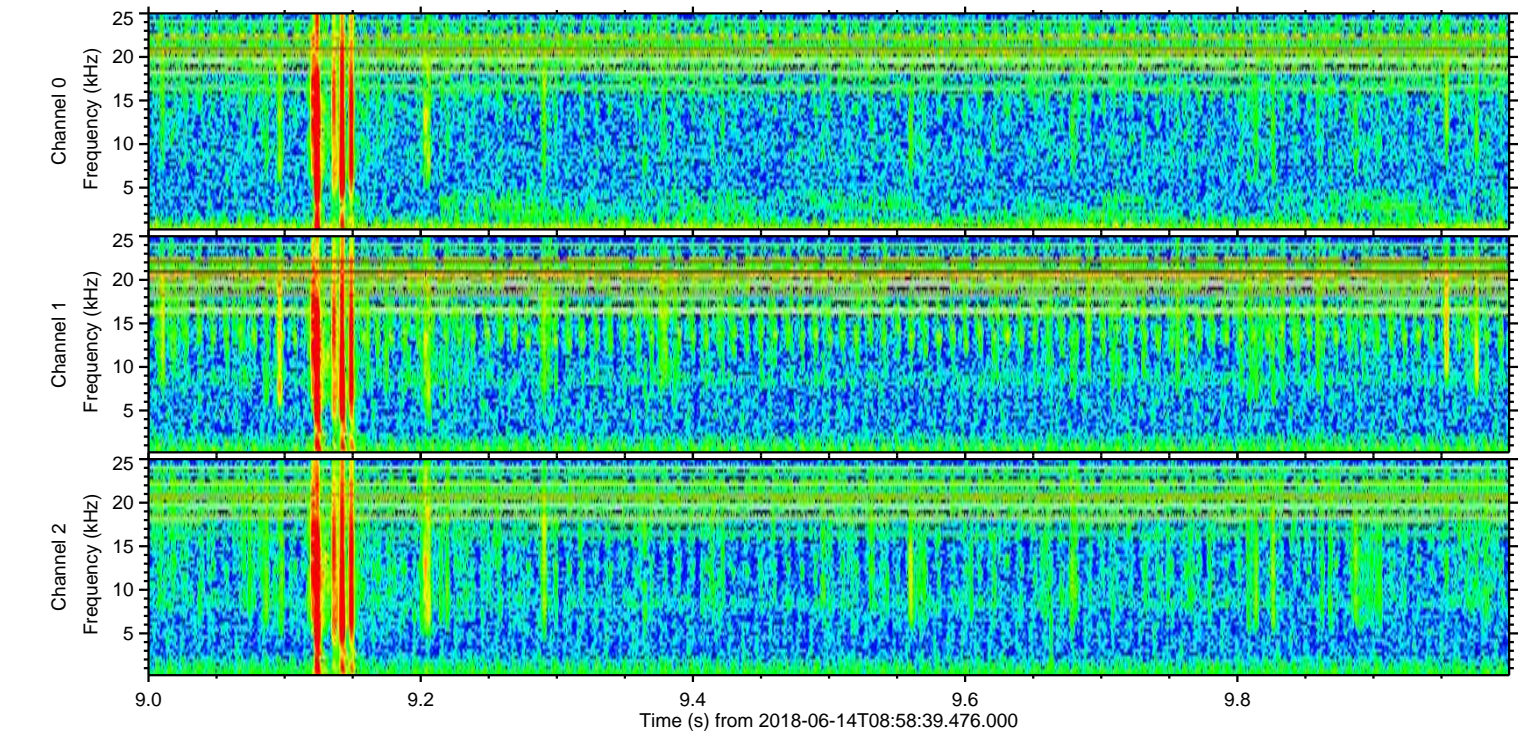
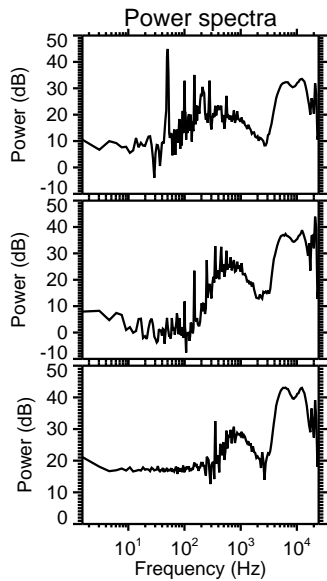
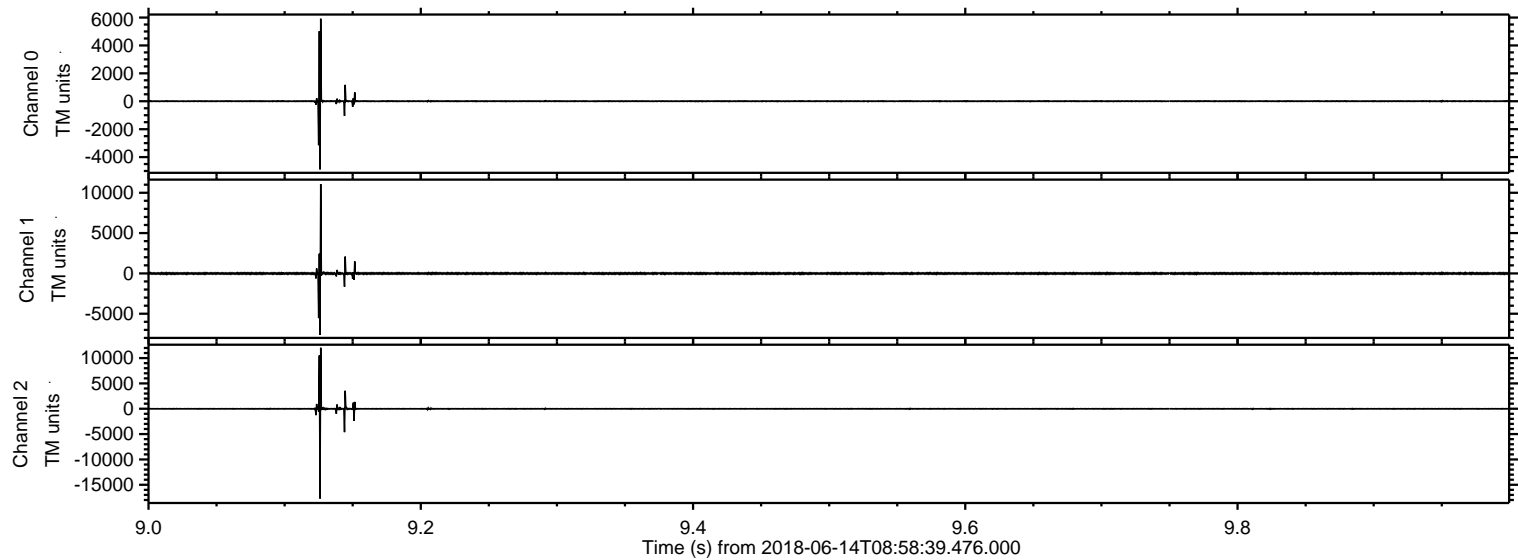
Channel 1  
mn: -7616  
mx: 11074  
 $\mu$ : -9.2  
 $\sigma$ : 32.6

Channel 2  
mn: -17710  
mx: 12034  
 $\mu$ : -8.3  
 $\sigma$ : 35.8



ELMAVAN 3D WAVEFORMS (Measured data sampled at 50 kHz) 51000 packets of 144 samples from 2018-06-14T08:58:39.476.000. Part 10/147

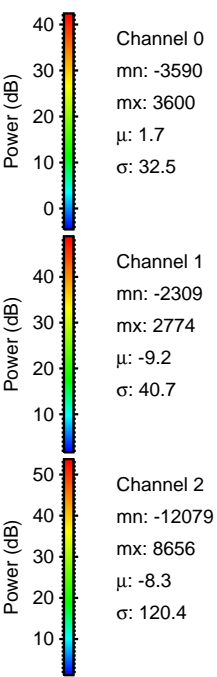
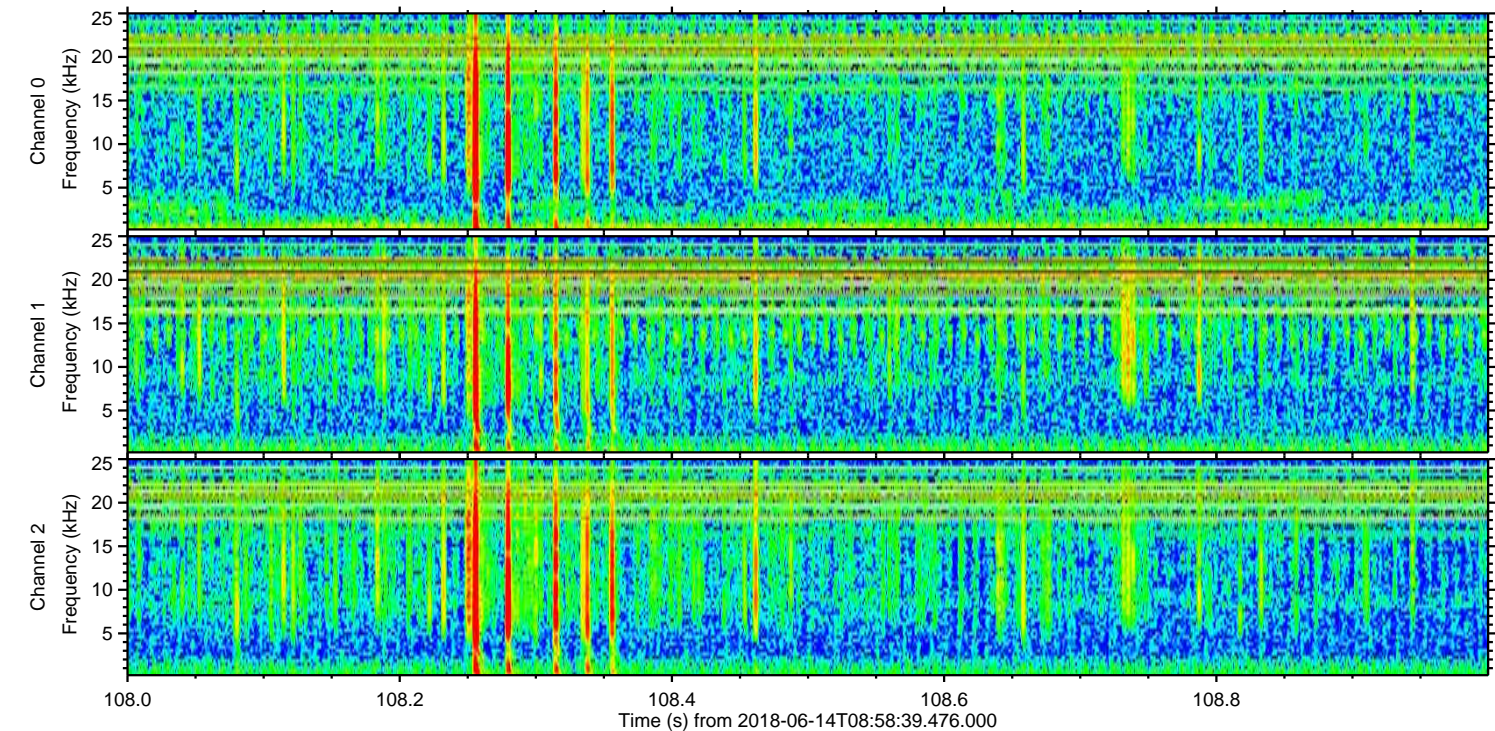
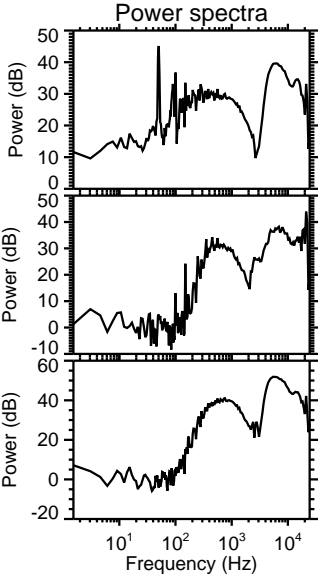
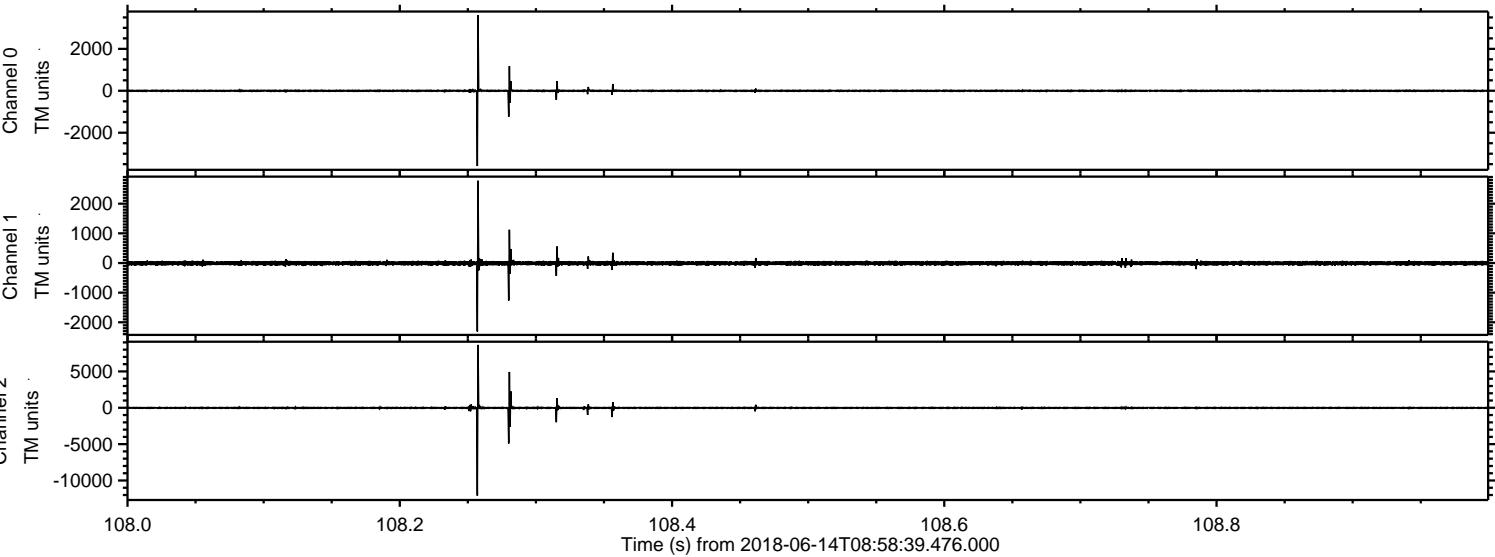
Processed Thu Jun 14 11:06:49 2018 by ELM ver.2012-10-06 from 001\_\_elm20180614\_085838\_\_dat00.bin





ELMAVAN 3D WAVEFORMS (Measured data sampled at 50 kHz) 51000 packets of 144 samples from 2018-06-14T08:58:39.476.000. Part 109/147

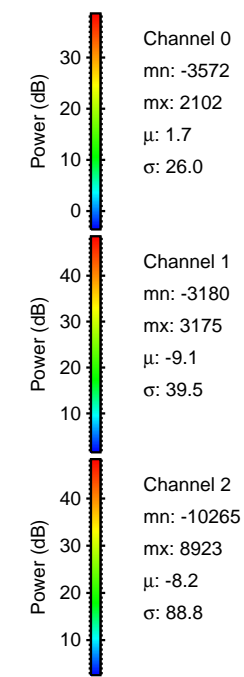
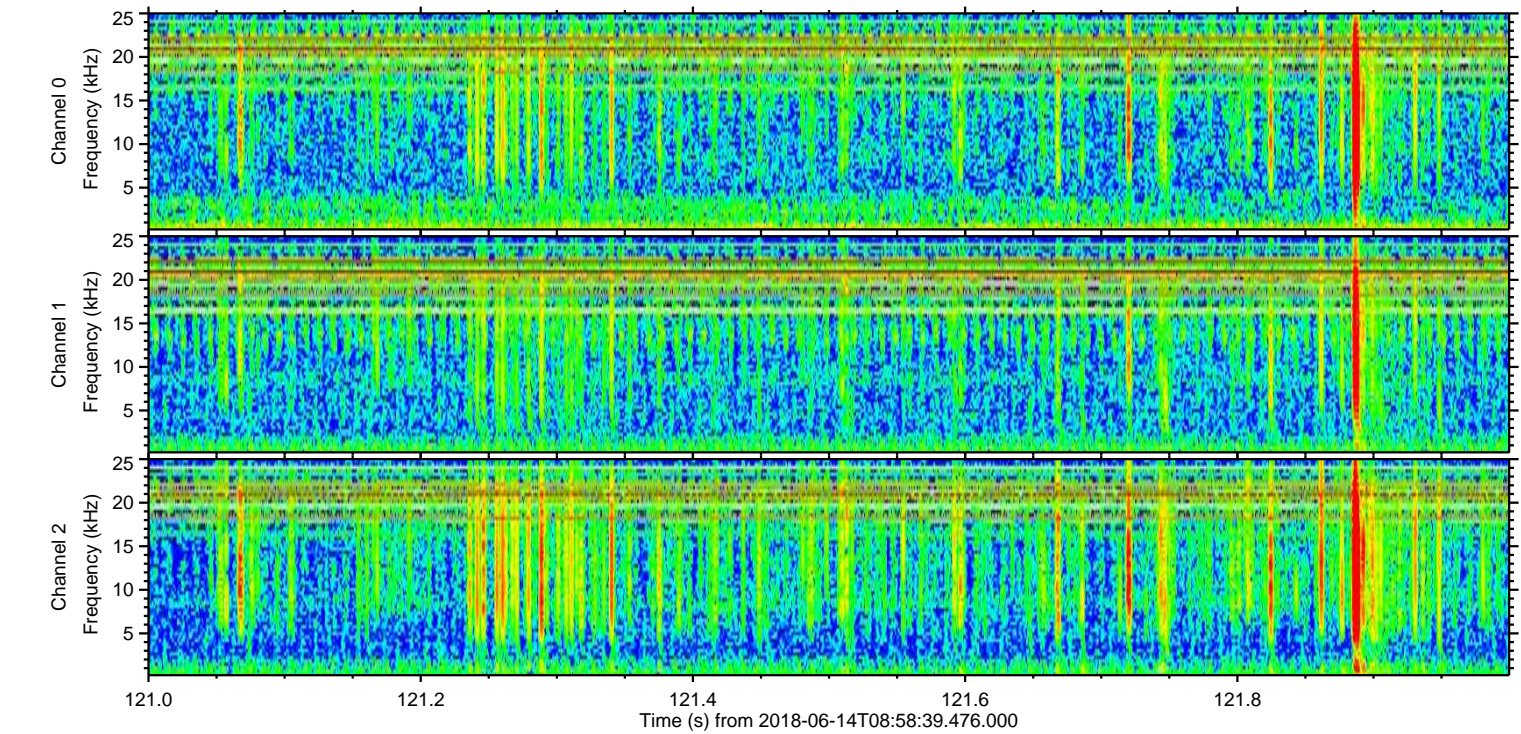
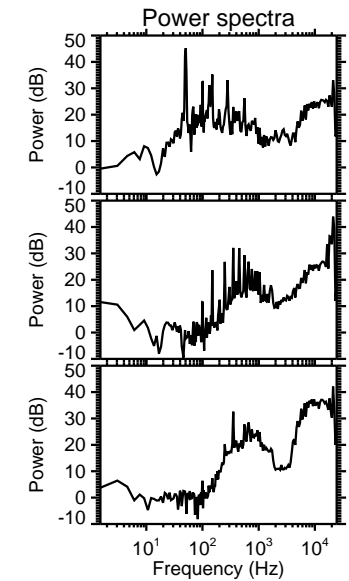
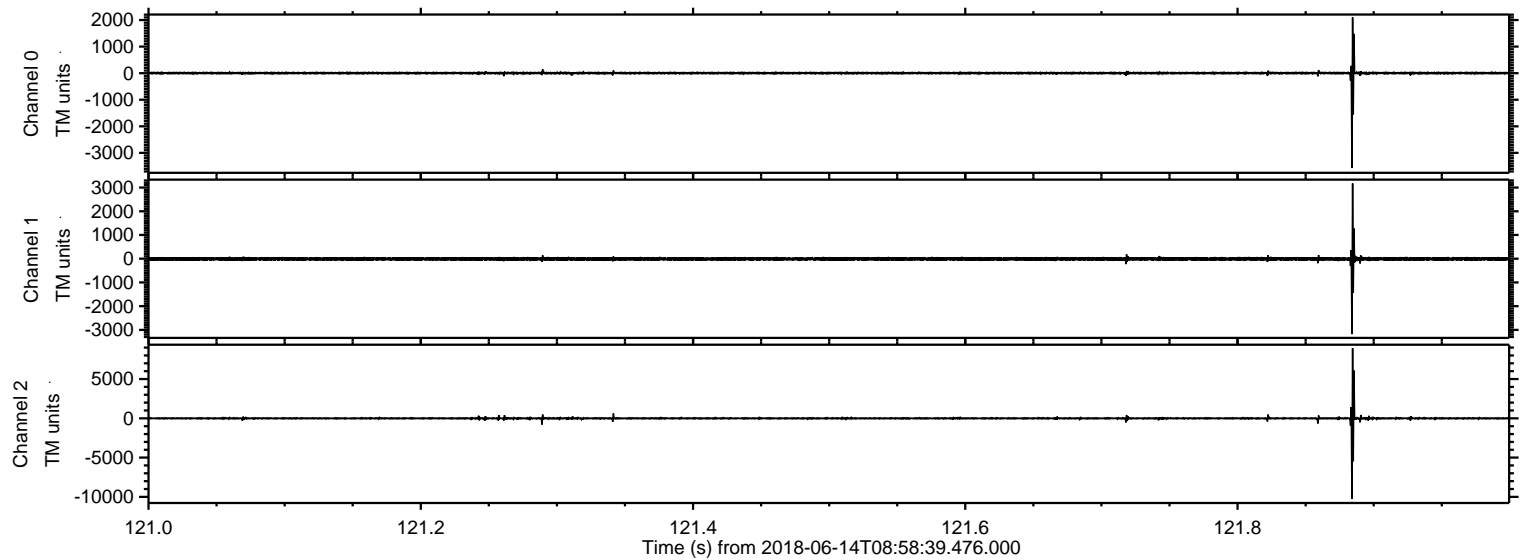
Processed Thu Jun 14 11:06:49 2018 by ELM ver.2012-10-06 from 001\_\_elm20180614\_085838\_\_dat00.bin





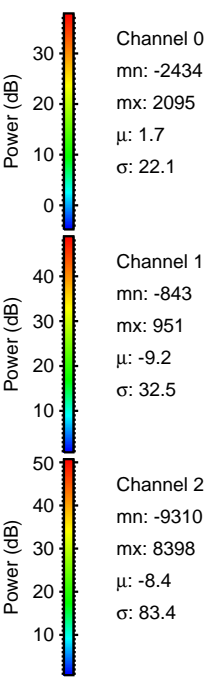
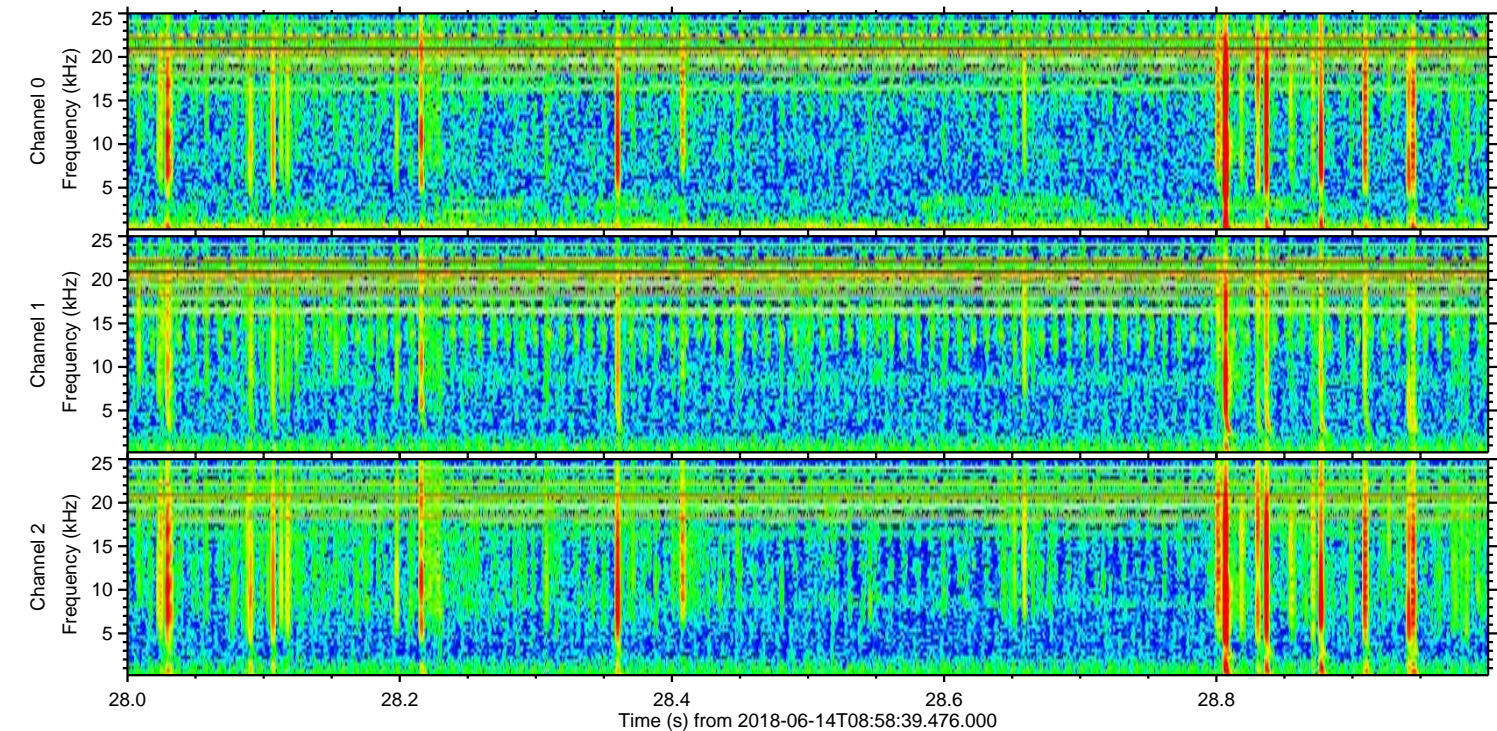
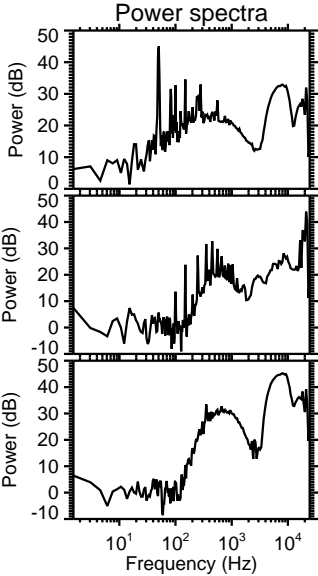
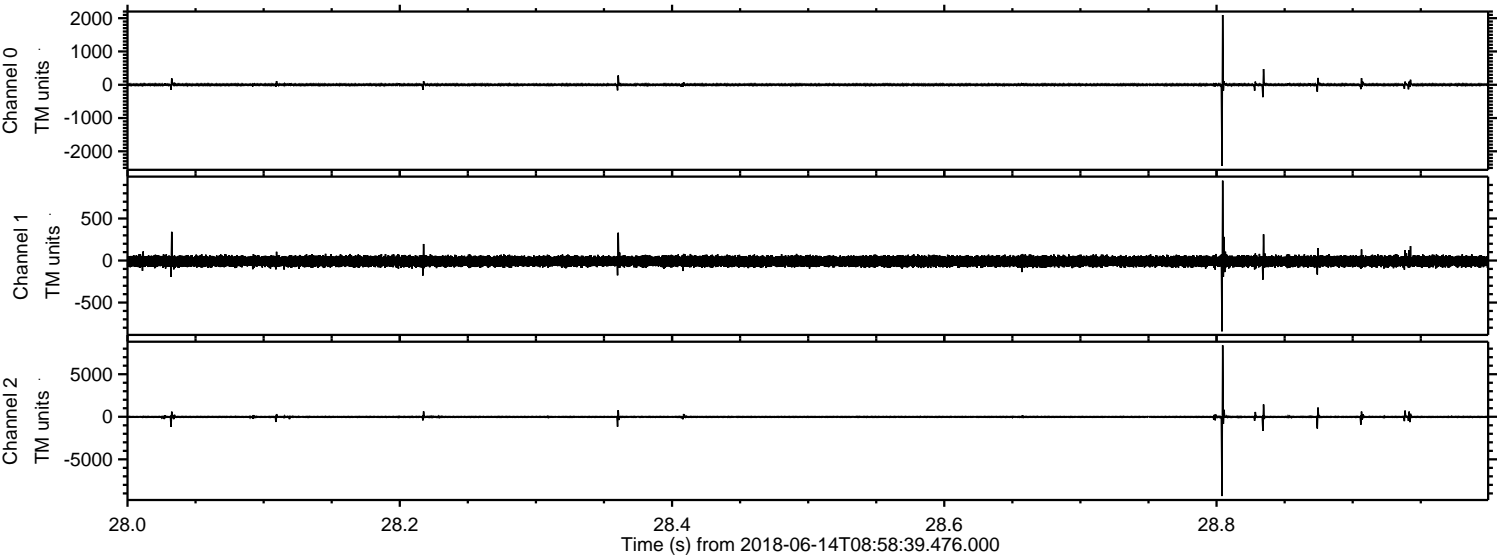
ELMAVAN 3D WAVEFORMS (Measured data sampled at 50 kHz) 51000 packets of 144 samples from 2018-06-14T08:58:39.476.000. Part 122/147

Processed Thu Jun 14 11:06:50 2018 by ELM ver.2012-10-06 from 001\_\_elm20180614\_085838\_\_dat00.bin





Processed Thu Jun 14 11:06:51 2018 by ELM ver.2012-10-06 from 001\_\_elm20180614\_085838\_\_dat00.bin



Channel 0  
mn: -2434  
mx: 2095  
 $\mu$ : 1.7  
 $\sigma$ : 22.1

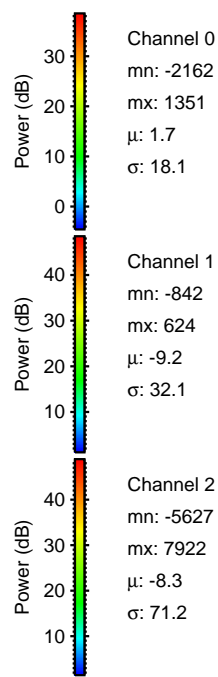
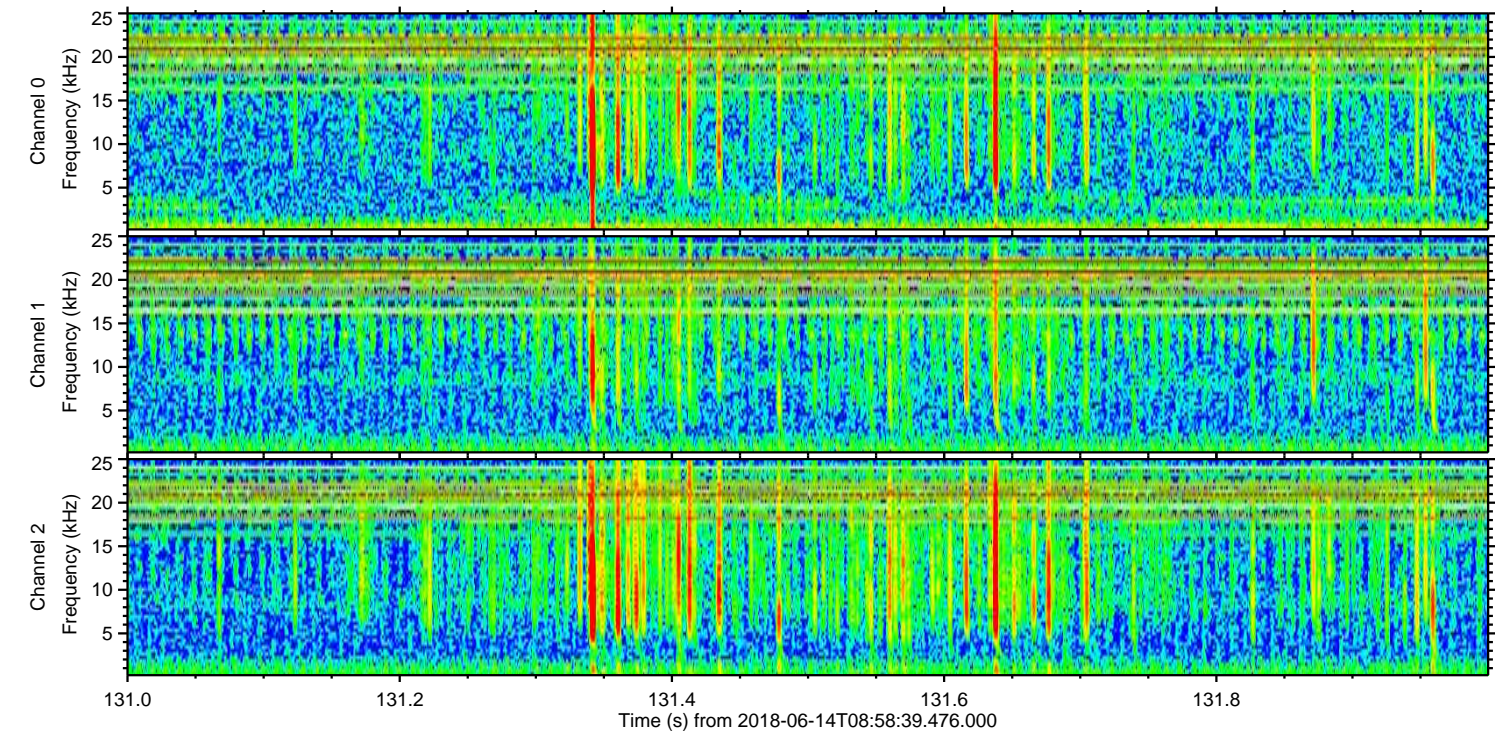
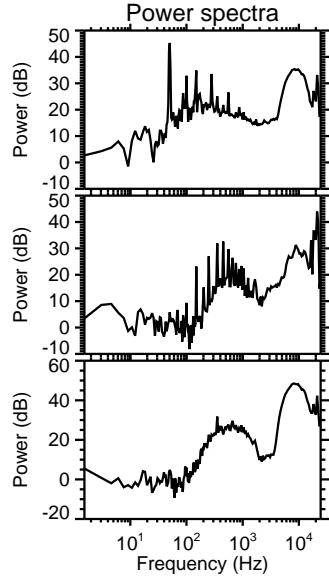
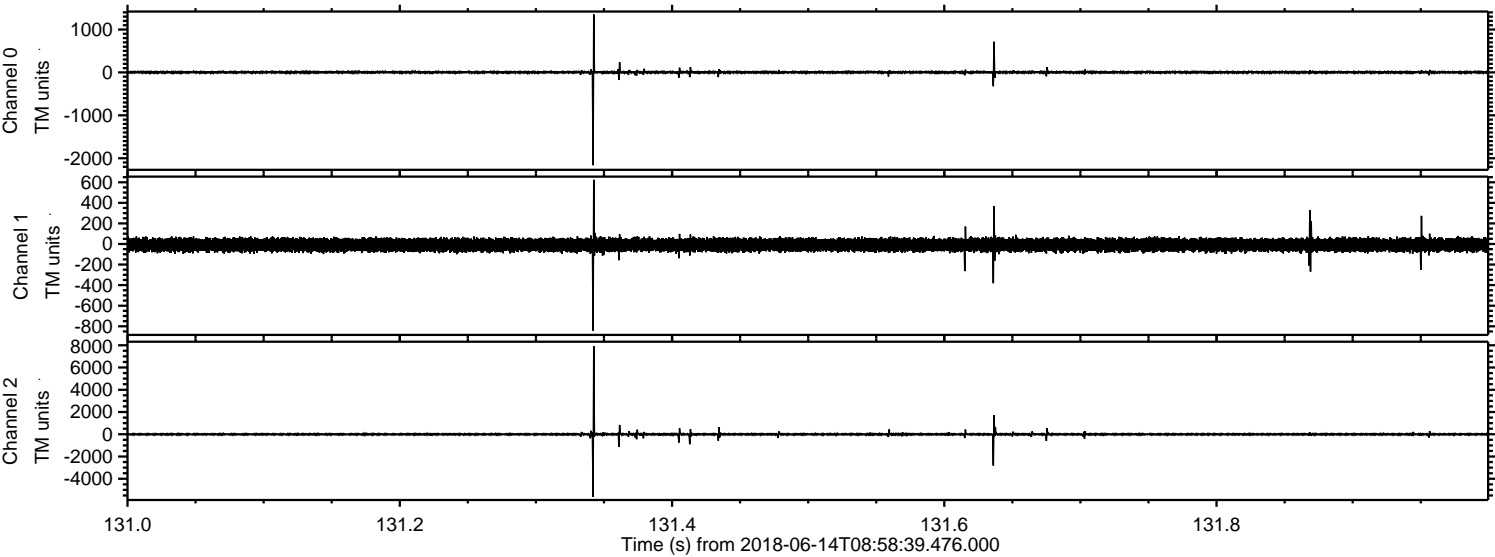
Channel 1  
mn: -843  
mx: 951  
 $\mu$ : -9.2  
 $\sigma$ : 32.5

Channel 2  
mn: -9310  
mx: 8398  
 $\mu$ : -8.4  
 $\sigma$ : 83.4



ELMAVAN 3D WAVEFORMS (Measured data sampled at 50 kHz) 51000 packets of 144 samples from 2018-06-14T08:58:39.476.000. Part 132/147

Processed Thu Jun 14 11:06:52 2018 by ELM ver.2012-10-06 from 001\_\_elm20180614\_085838\_\_dat00.bin



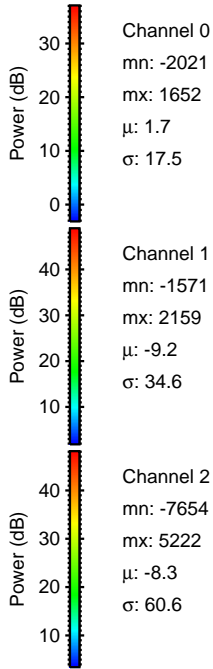
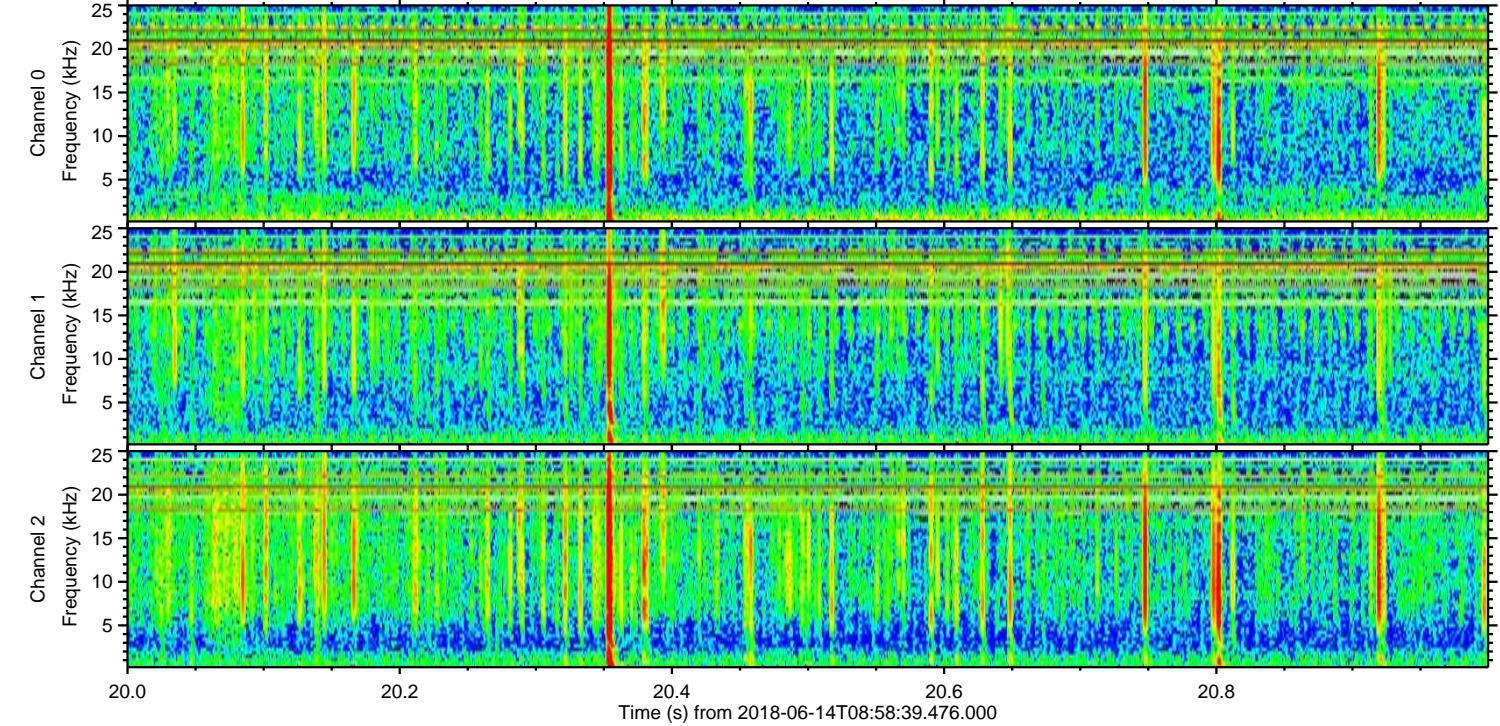
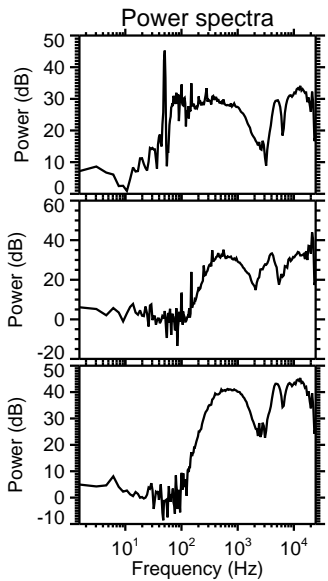
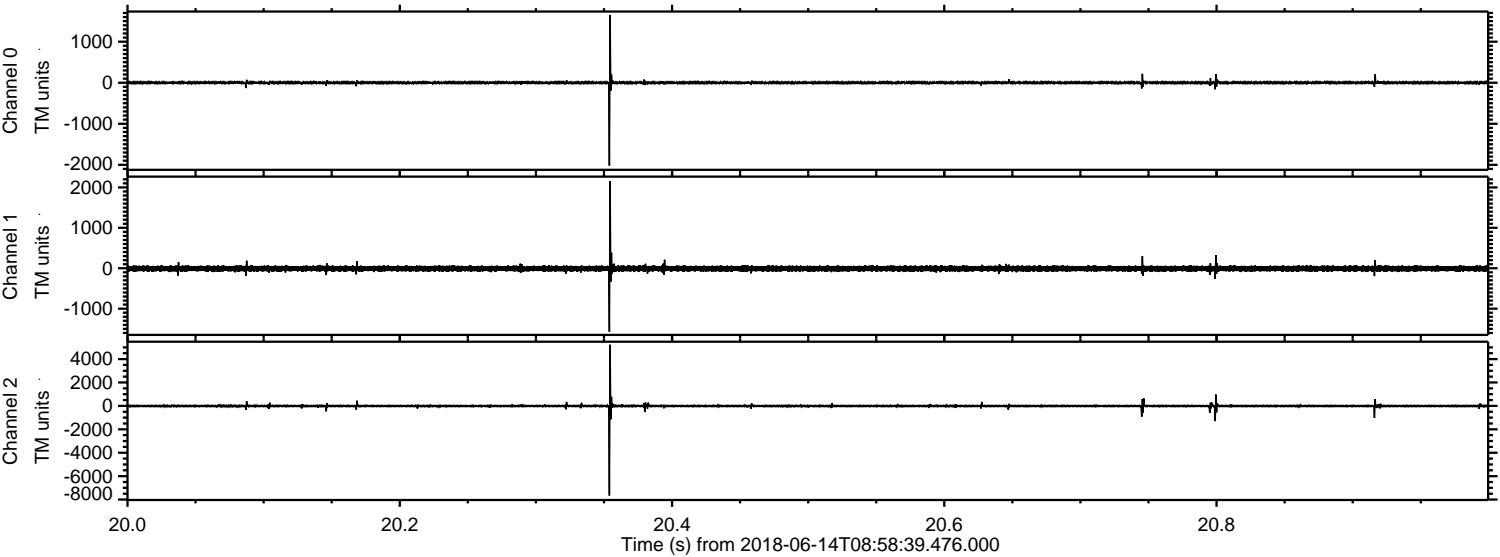
Channel 0  
mn: -2162  
mx: 1351  
 $\mu$ : 1.7  
 $\sigma$ : 18.1

Channel 1  
mn: -842  
mx: 624  
 $\mu$ : -9.2  
 $\sigma$ : 32.1

Channel 2  
mn: -5627  
mx: 7922  
 $\mu$ : -8.3  
 $\sigma$ : 71.2

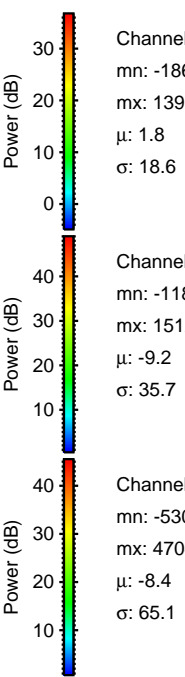
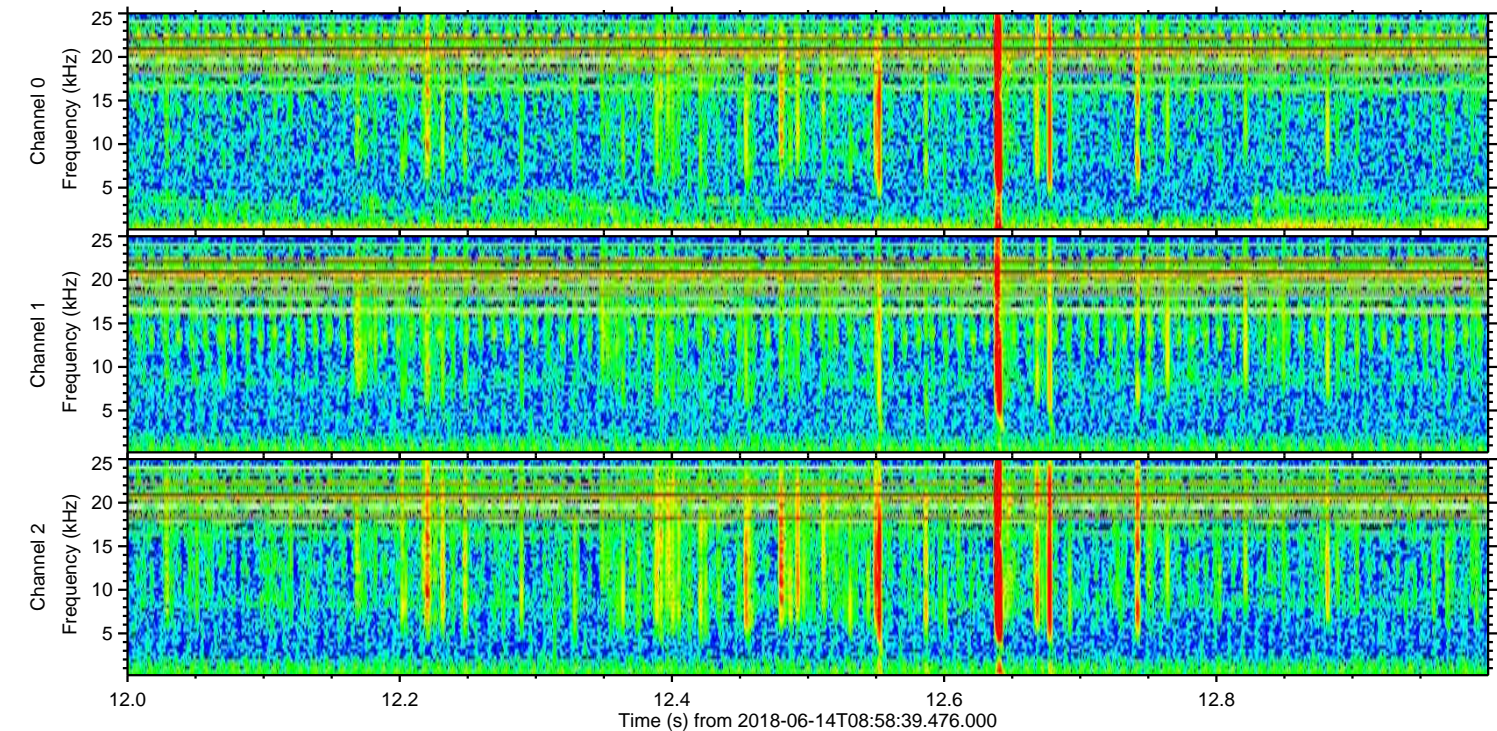
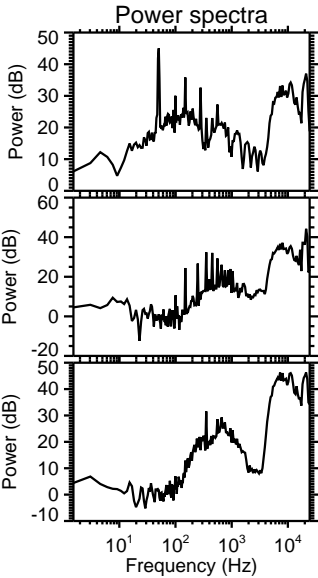
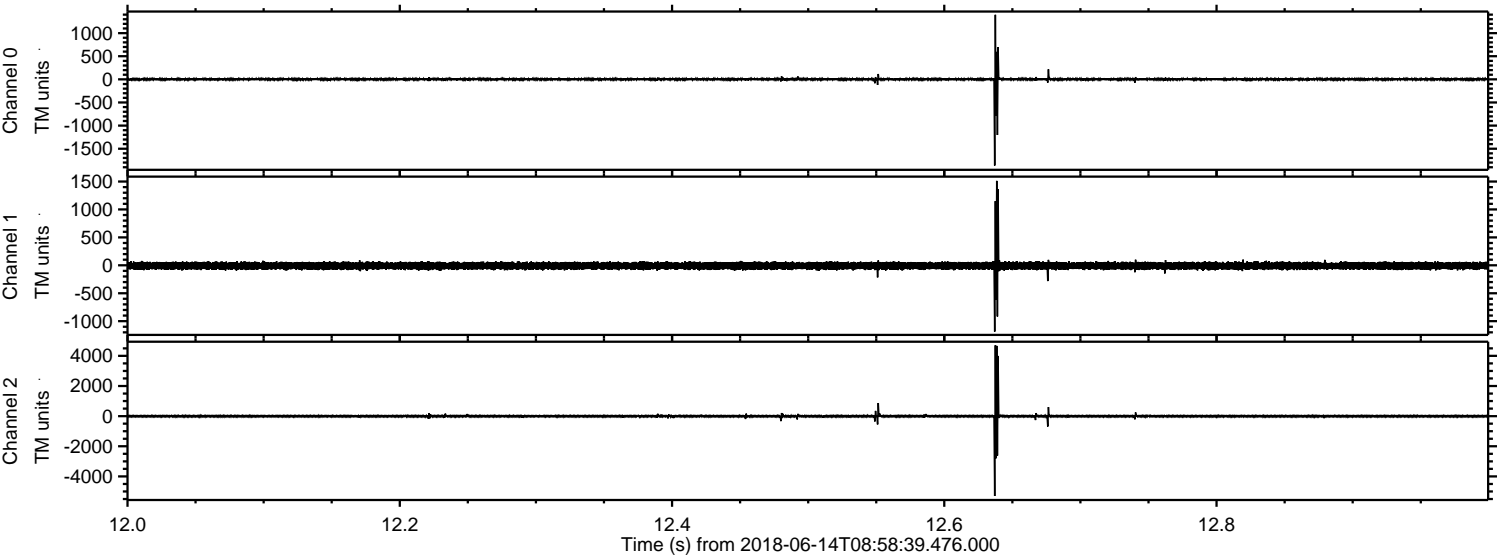


Processed Thu Jun 14 11:06:53 2018 by ELM ver.2012-10-06 from 001\_\_elm20180614\_085838\_\_dat00.bin





Processed Thu Jun 14 11:06:53 2018 by ELM ver.2012-10-06 from 001\_\_elm20180614\_085838\_\_dat00.bin



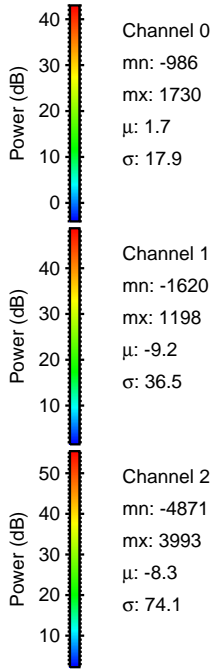
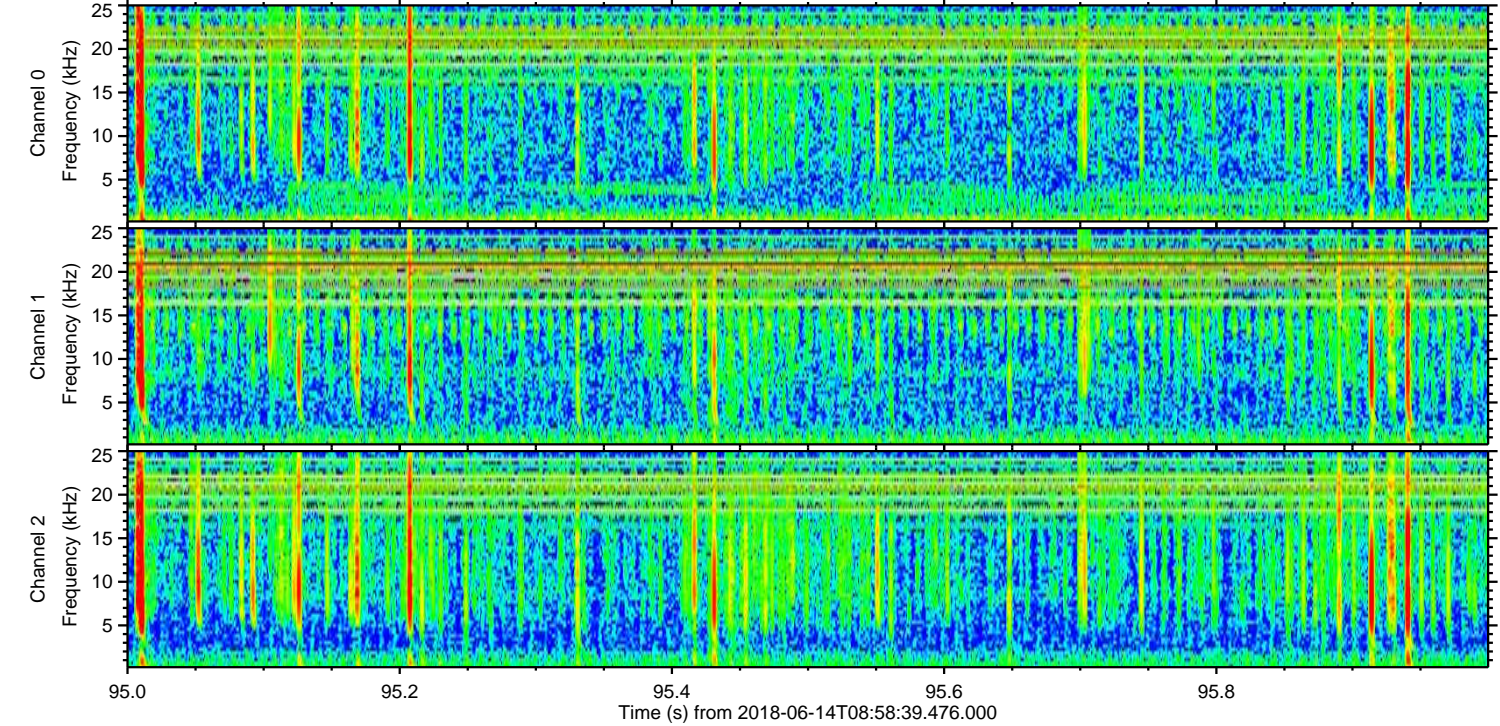
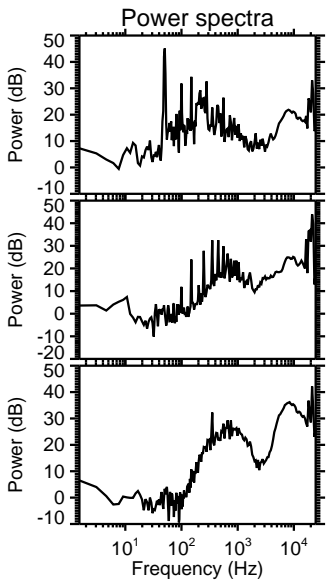
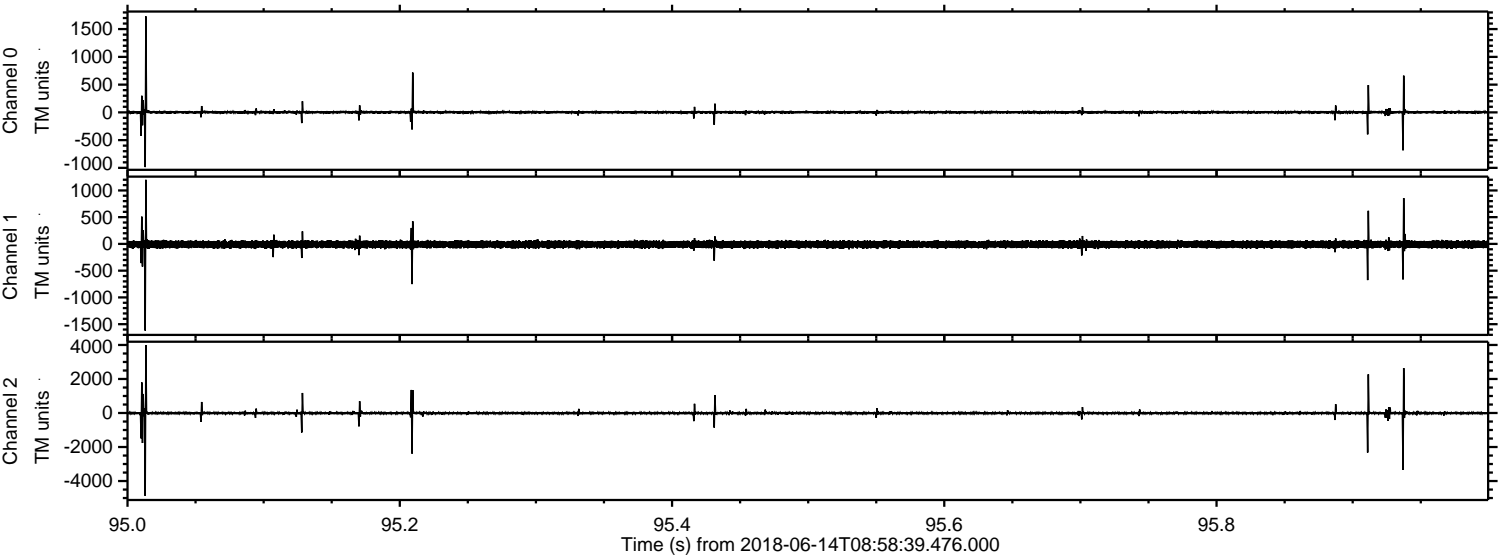
Channel 0  
mn: -1863  
mx: 1397  
 $\mu$ : 1.8  
 $\sigma$ : 18.6

Channel 1  
mn: -1187  
mx: 1512  
 $\mu$ : -9.2  
 $\sigma$ : 35.7

Channel 2  
mn: -5301  
mx: 4704  
 $\mu$ : -8.4  
 $\sigma$ : 65.1

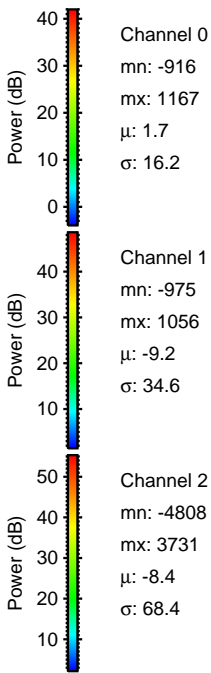
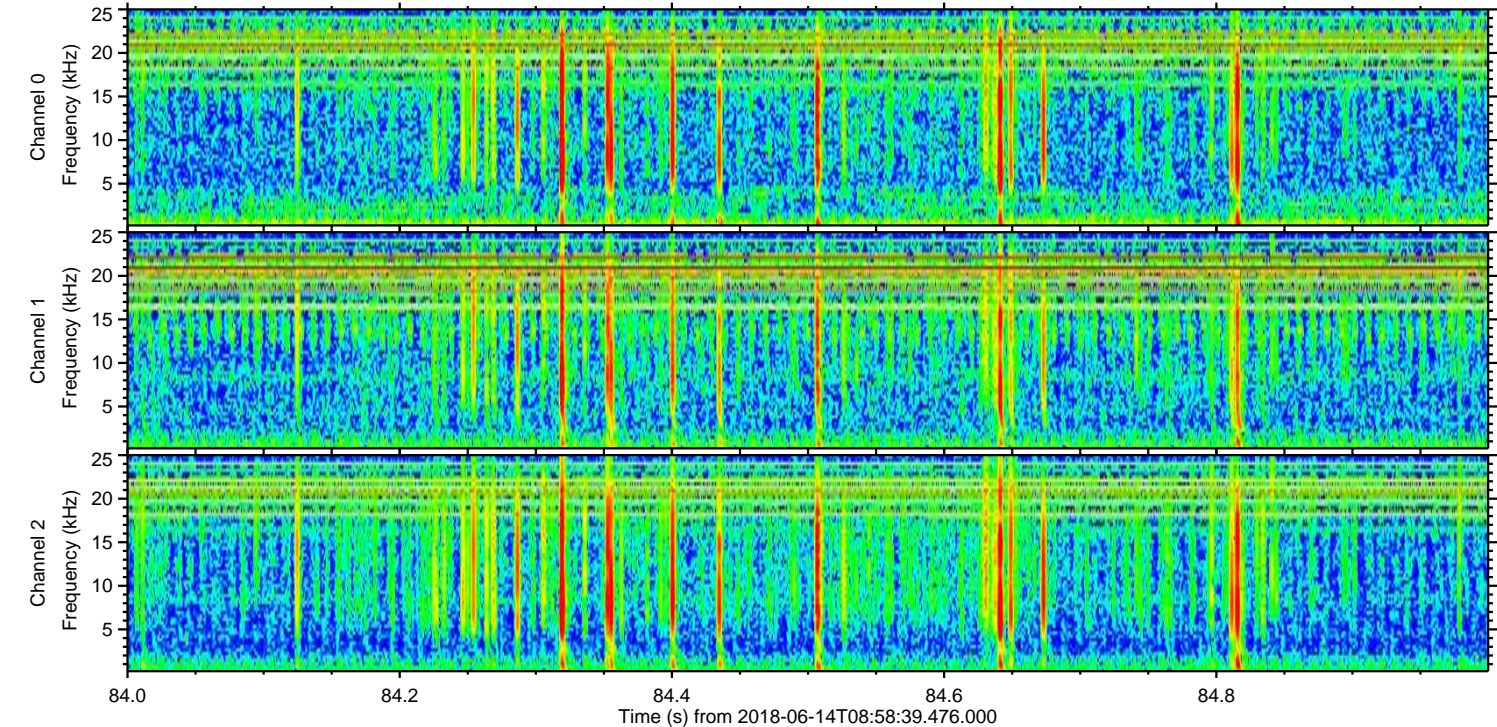
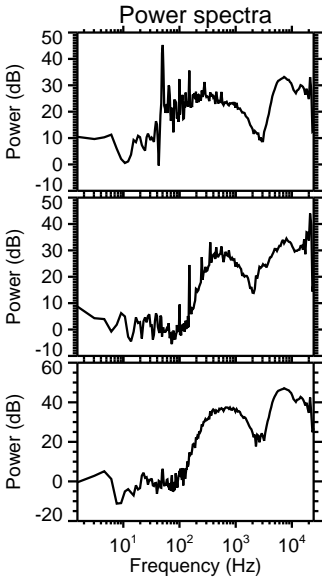
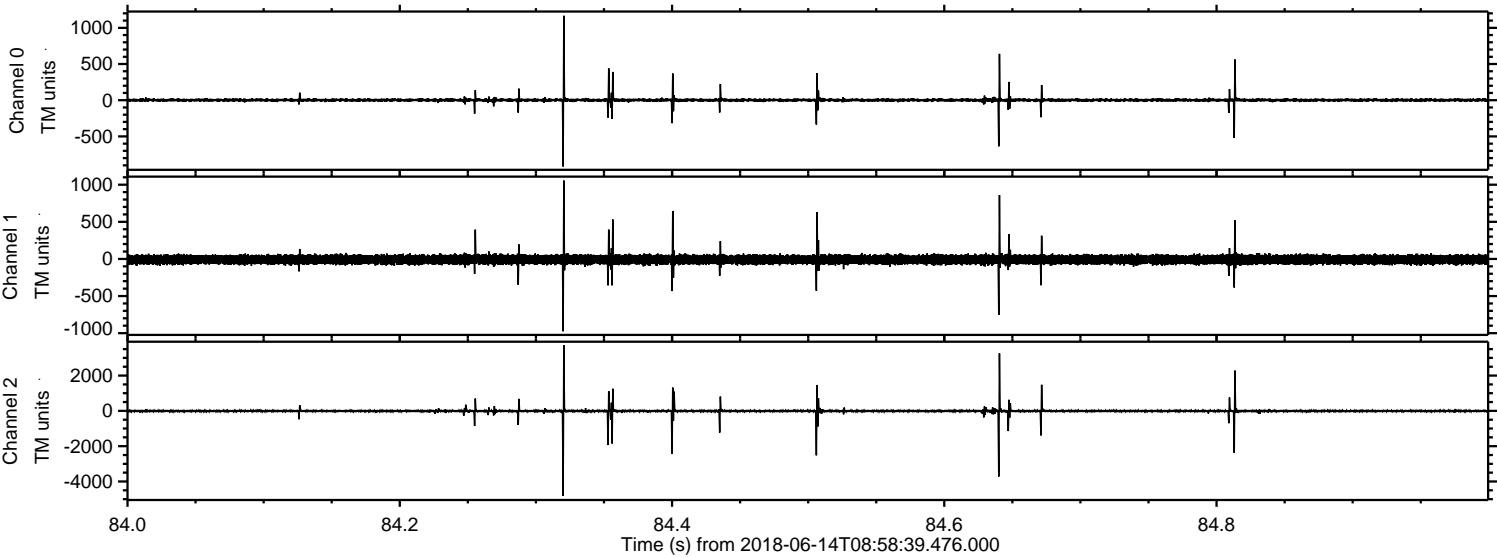


Processed Thu Jun 14 11:06:54 2018 by ELM ver.2012-10-06 from 001\_\_elm20180614\_085838\_\_dat00.bin





Processed Thu Jun 14 11:06:55 2018 by ELM ver.2012-10-06 from 001\_\_elm20180614\_085838\_\_dat00.bin





Processed Thu Jun 14 11:06:55 2018 by ELM ver.2012-10-06 from 001\_\_elm20180614\_085838\_\_dat00.bin

