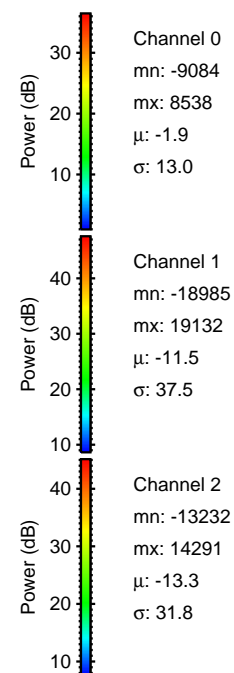
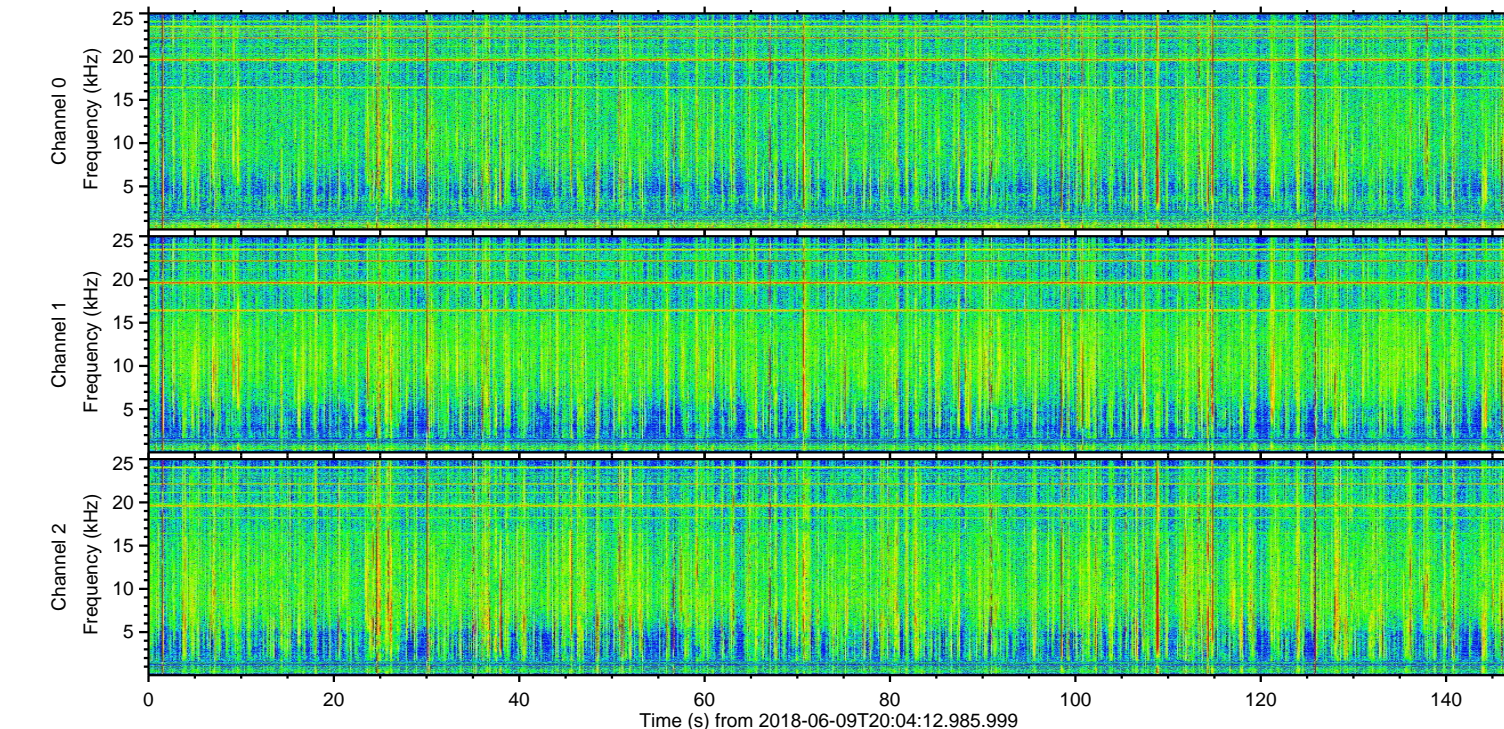
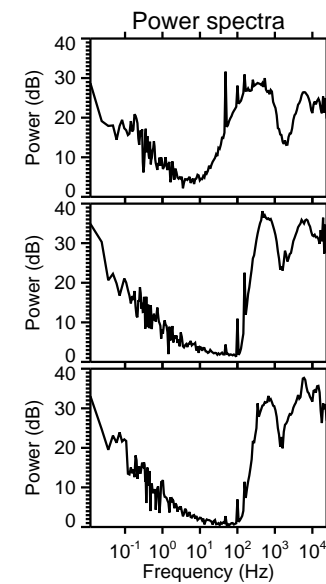
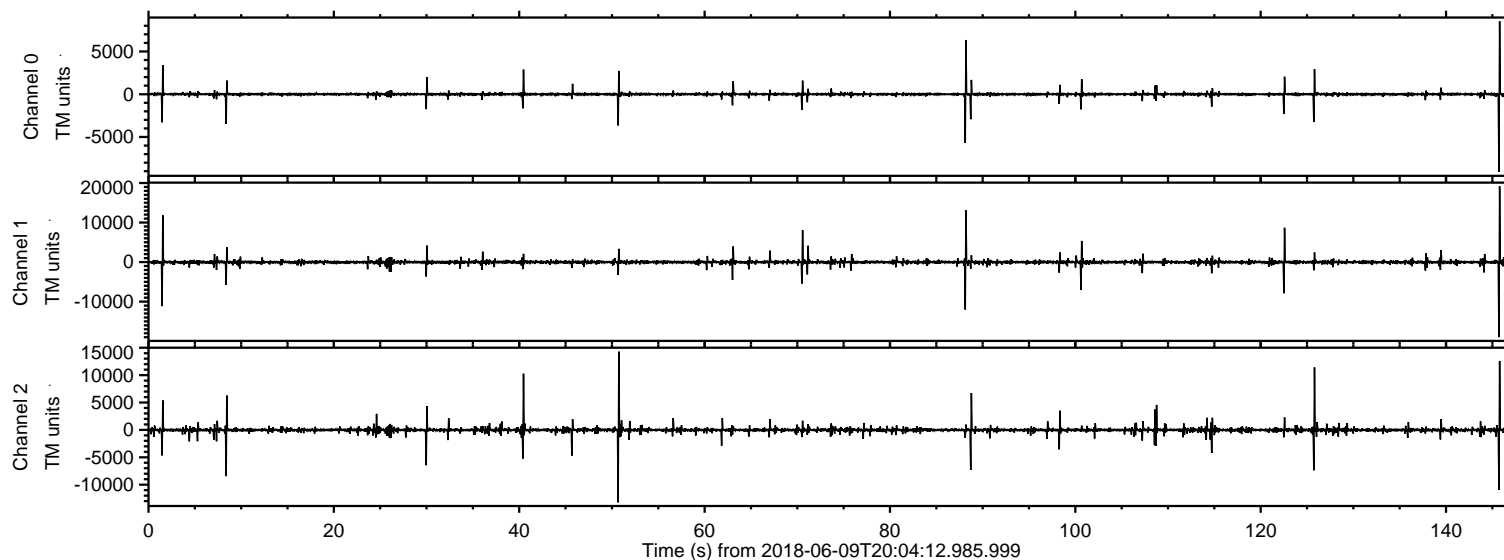


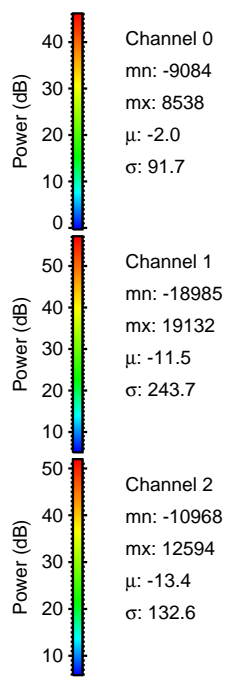
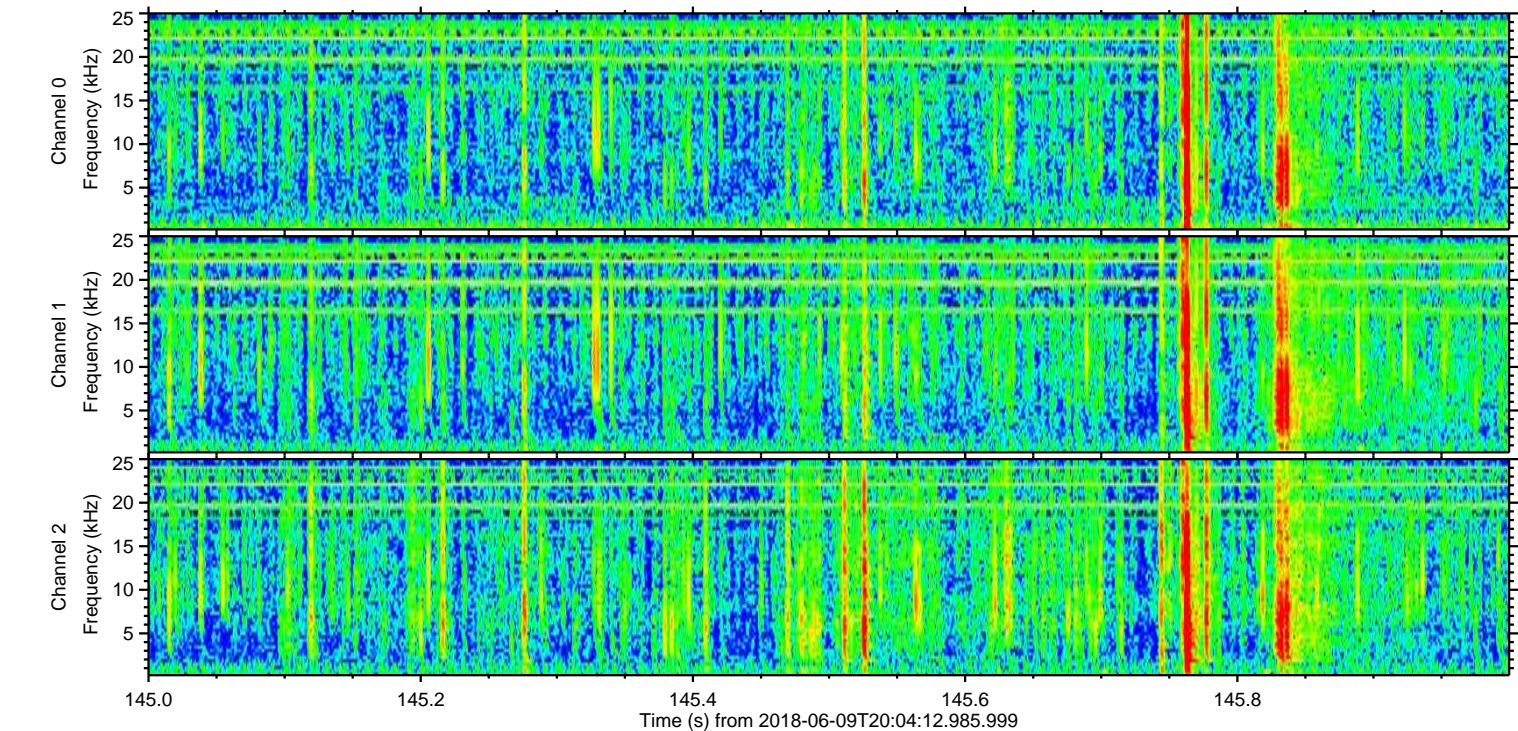
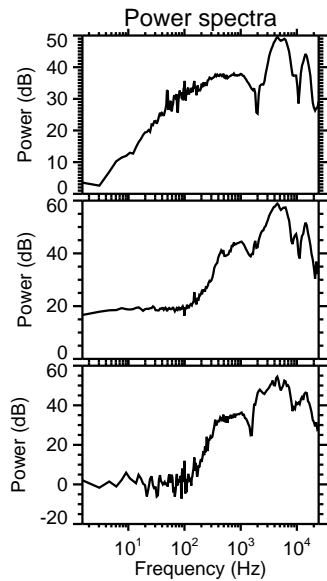
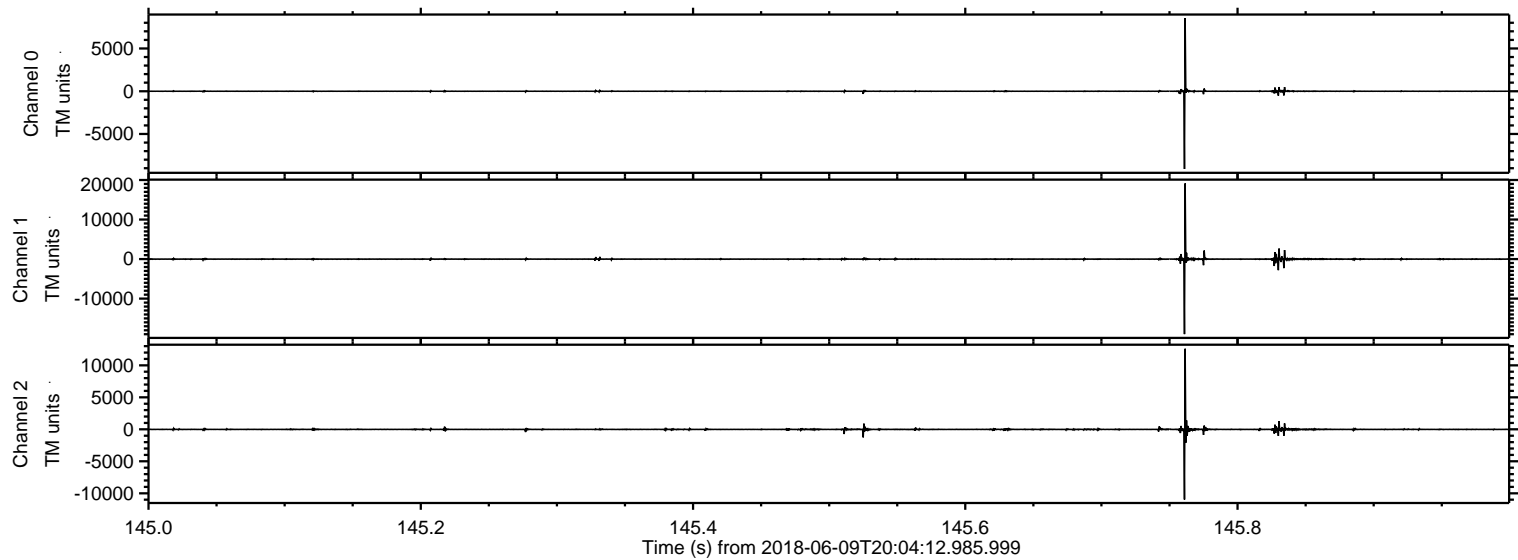
ELMAVAN 3D WAVEFORMS (Measured data sampled at 50 kHz) 51000 packets of 144 samples from 2018-06-09T20:04:12.985.999.

Processed Sat Jun 9 22:12:18 2018 by ELM ver.2012-10-06 from 001__elm20180609_200411__dat00.bin

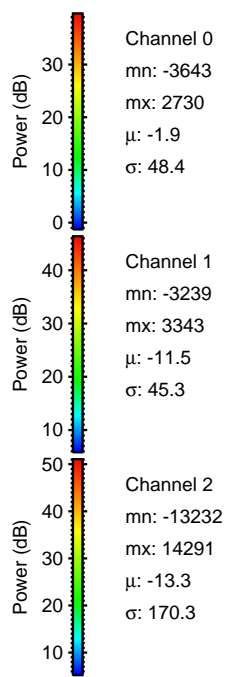
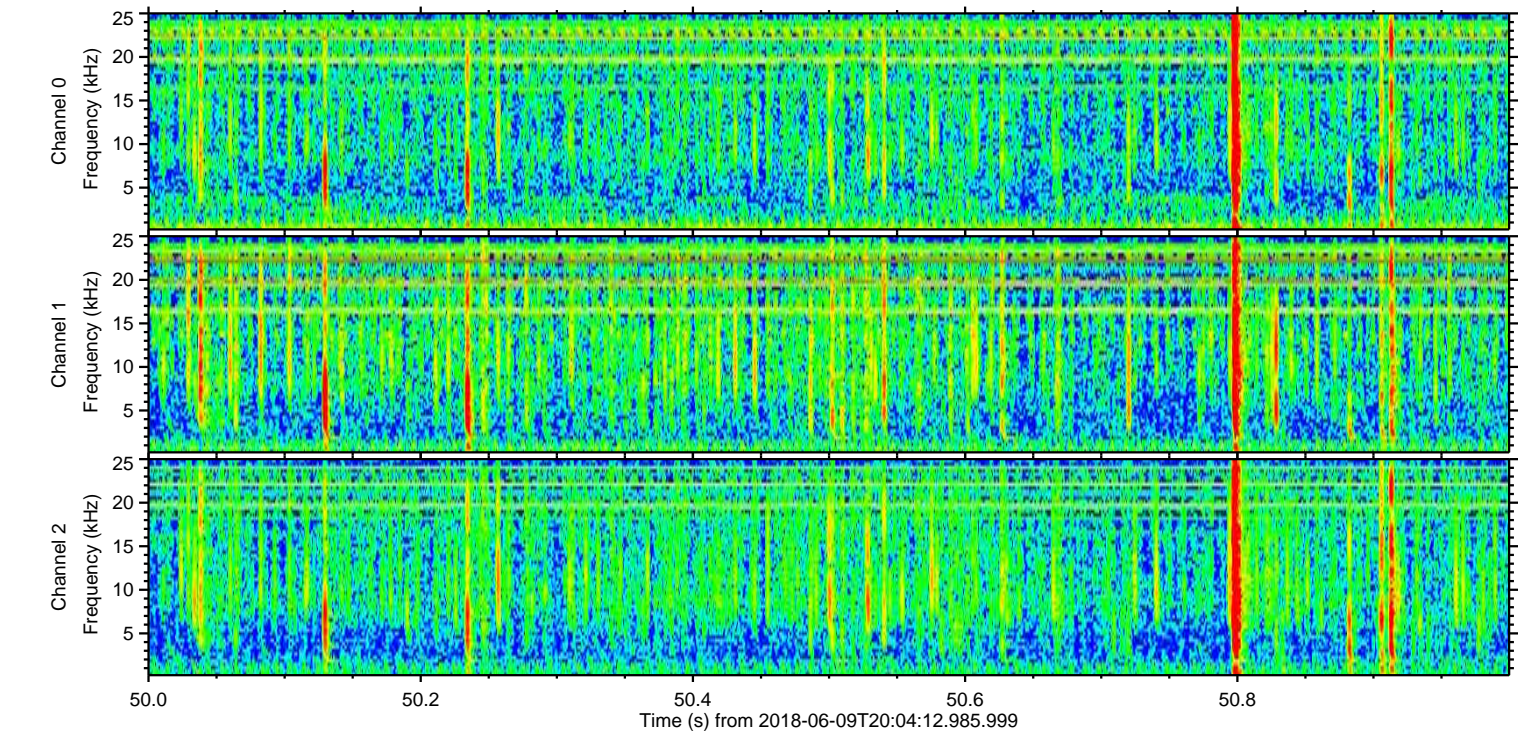
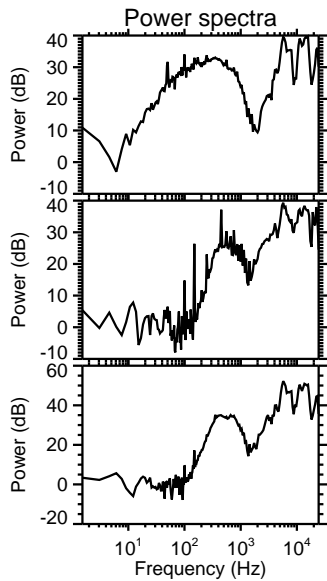
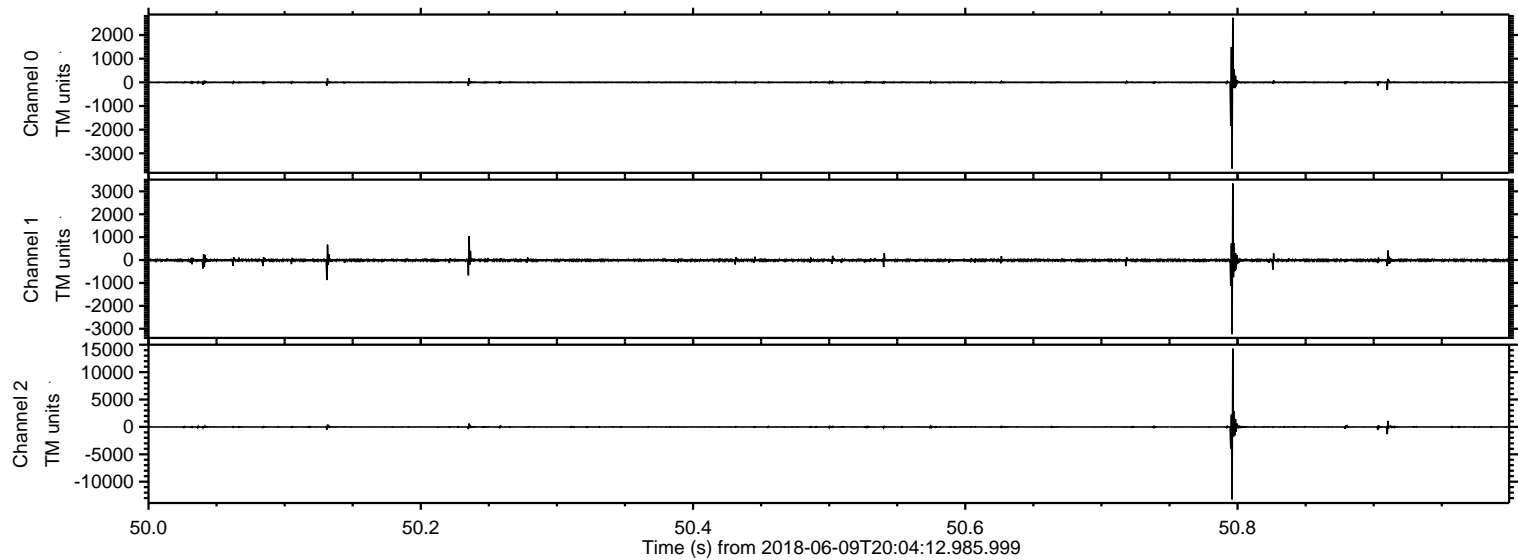


ELMAVAN 3D WAVEFORMS (Measured data sampled at 50 kHz) 51000 packets of 144 samples from 2018-06-09T20:04:12.985.999. Part 146/147

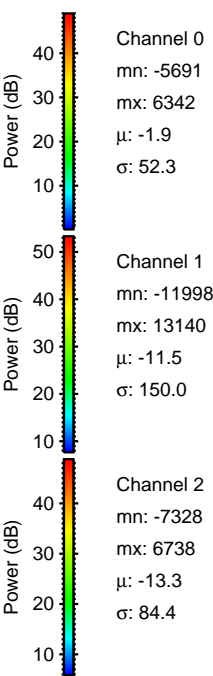
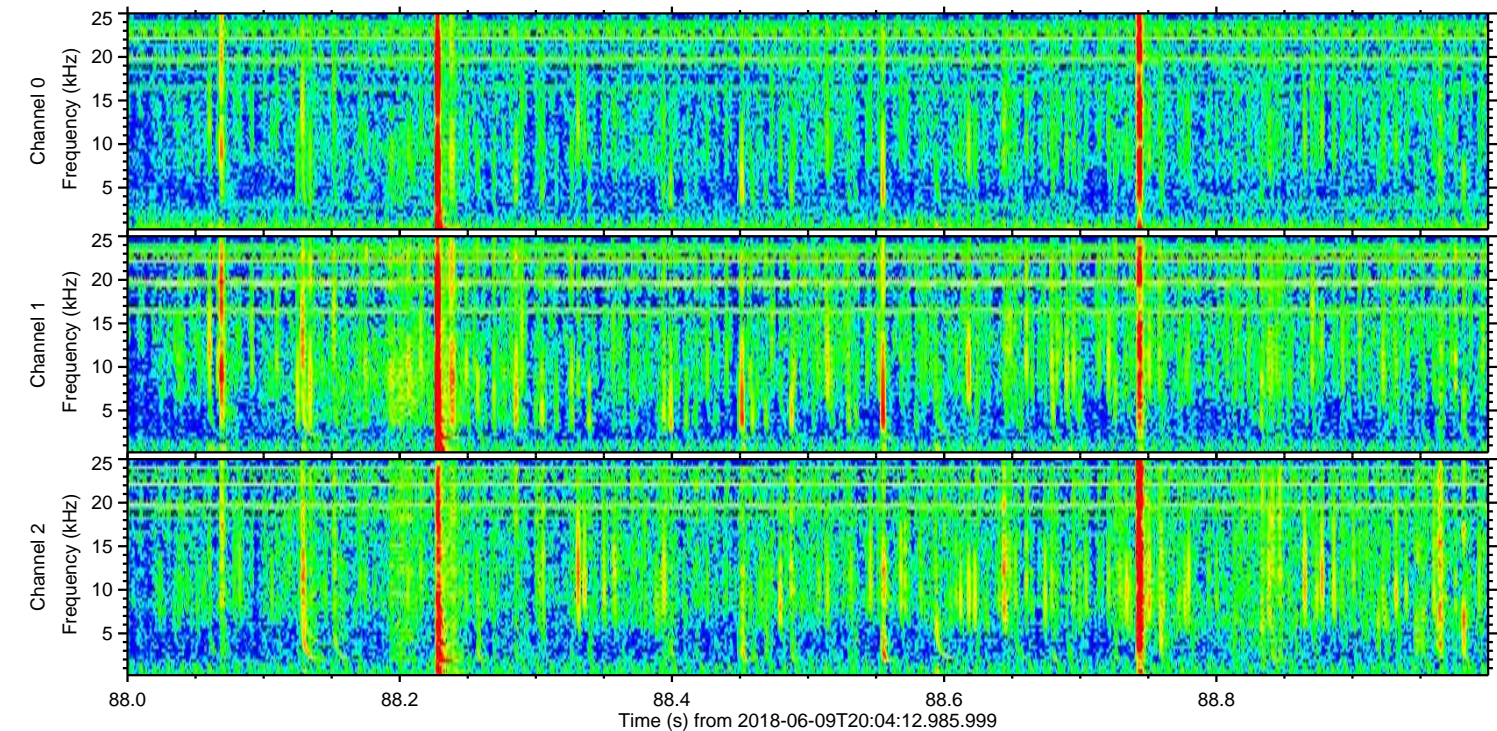
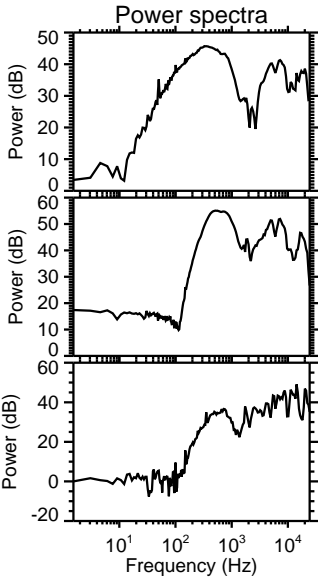
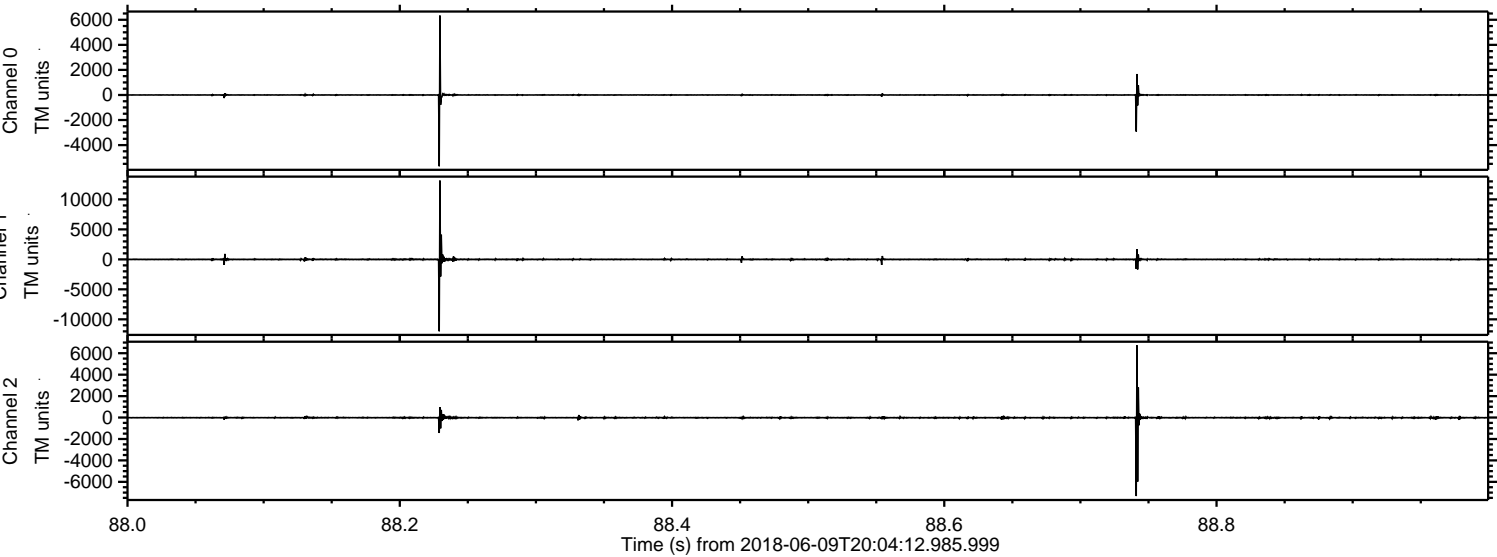
Processed Sat Jun 9 22:12:28 2018 by ELM ver.2012-10-06 from 001__elm20180609_200411__dat00.bin



Processed Sat Jun 9 22:12:30 2018 by ELM ver.2012-10-06 from 001__elm20180609_200411__dat00.bin

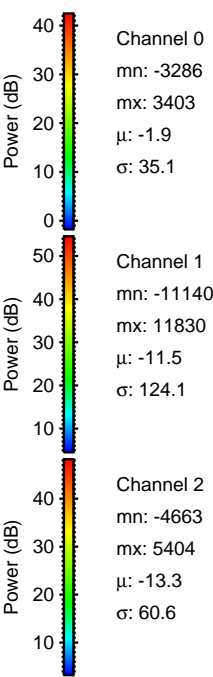
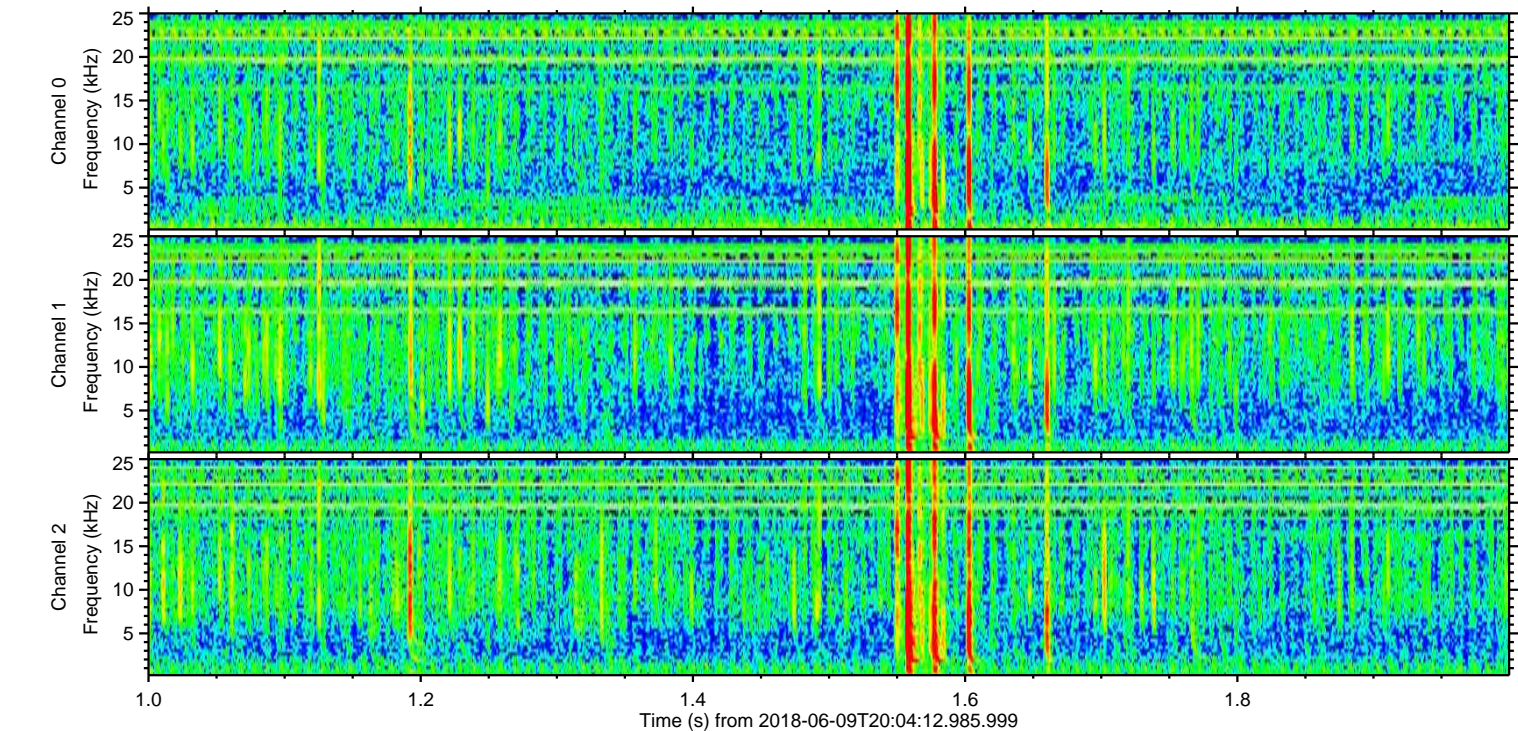
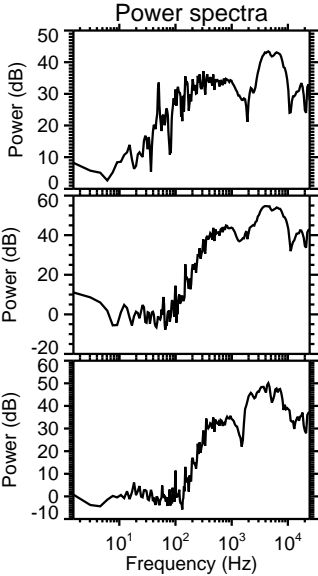
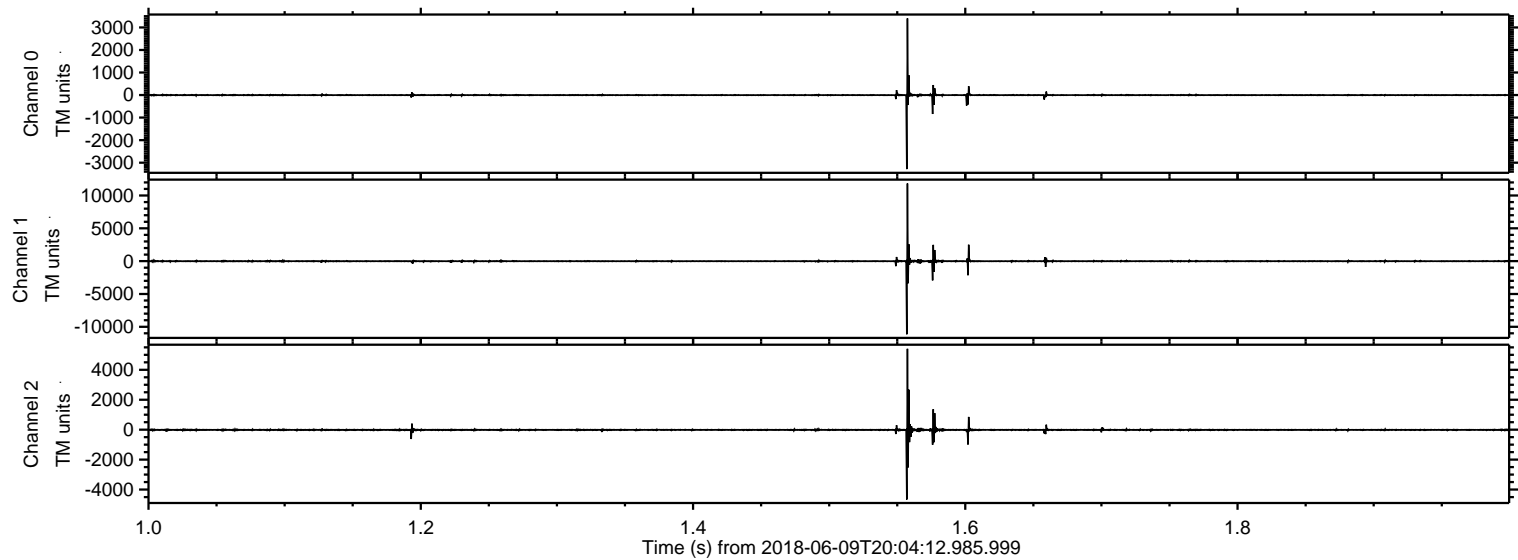


Processed Sat Jun 9 22:12:31 2018 by ELM ver.2012-10-06 from 001__elm20180609_200411__dat00.bin



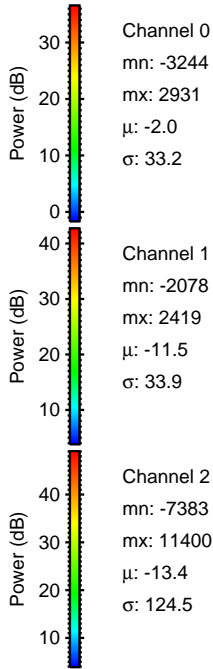
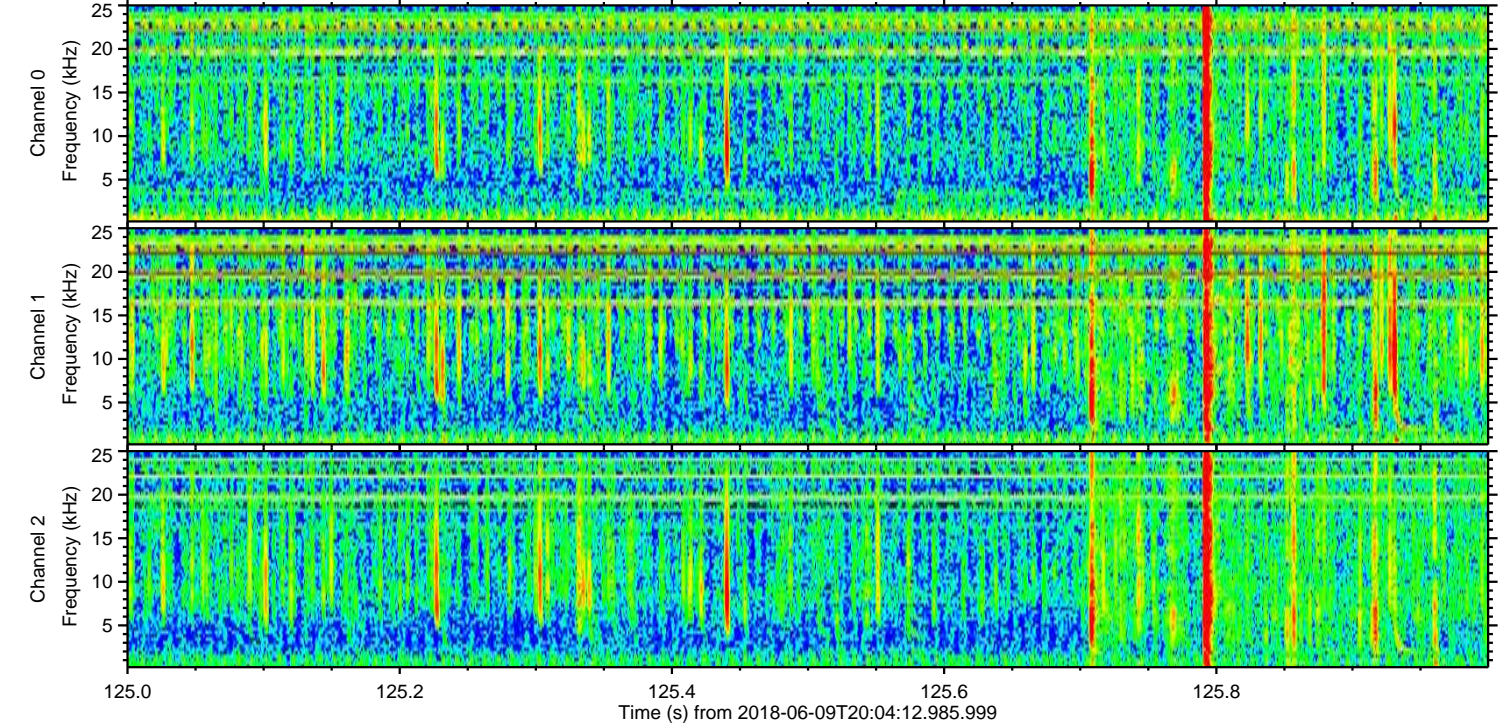
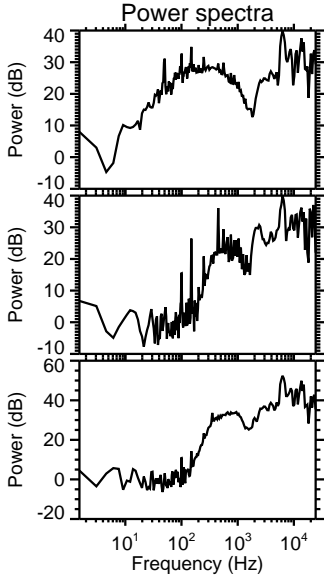
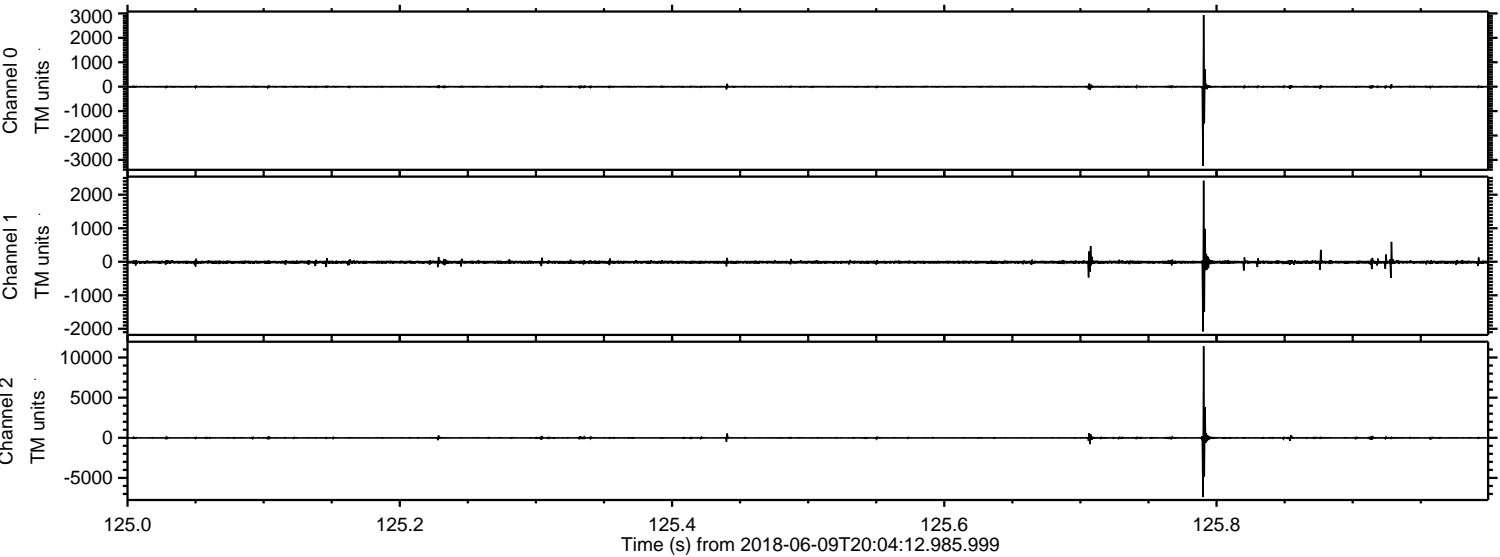
ELMAVAN 3D WAVEFORMS (Measured data sampled at 50 kHz) 51000 packets of 144 samples from 2018-06-09T20:04:12.985.999. Part 2/147

Processed Sat Jun 9 22:12:32 2018 by ELM ver.2012-10-06 from 001__elm20180609_200411__dat00.bin

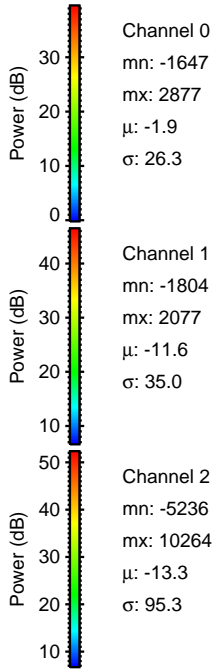
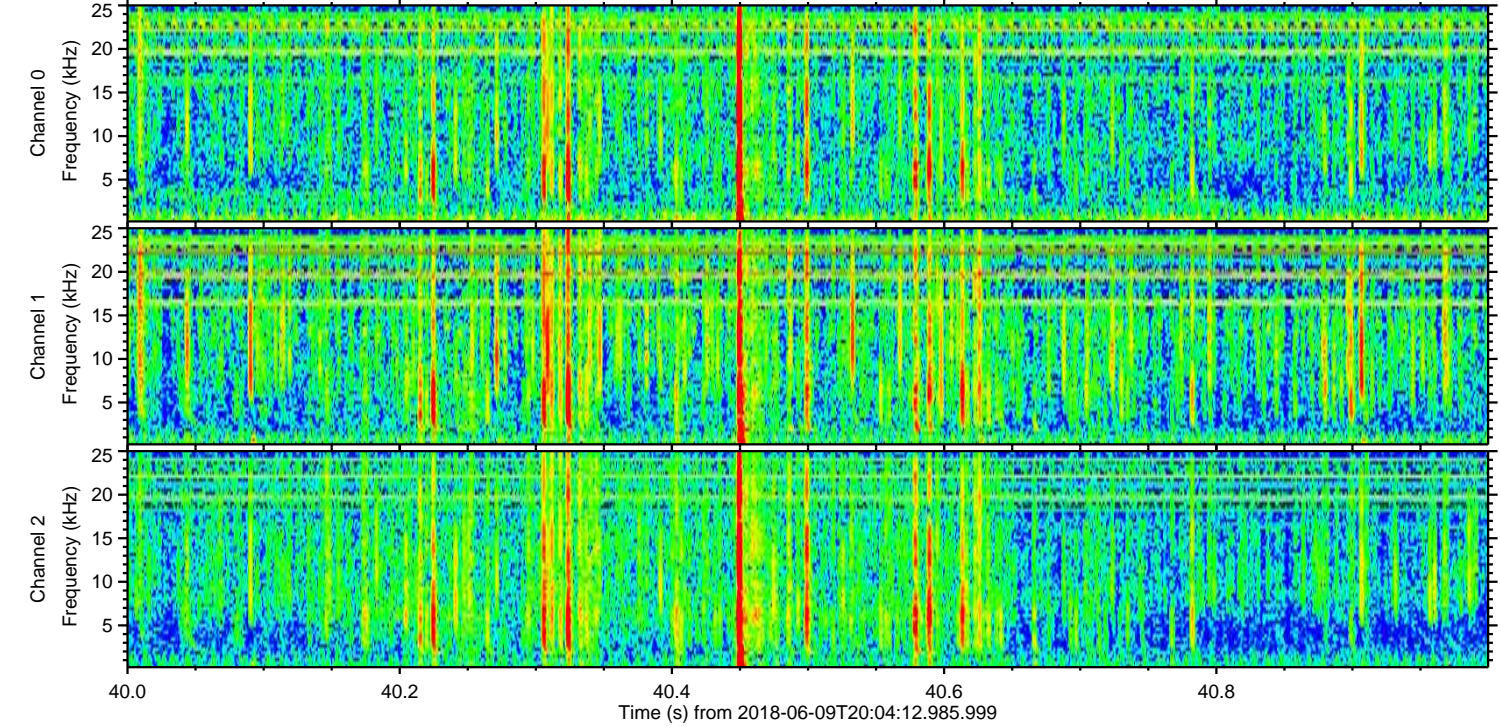
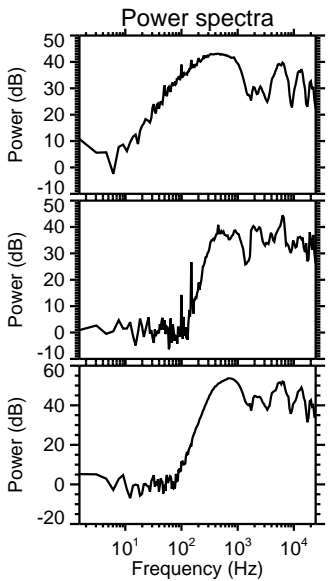
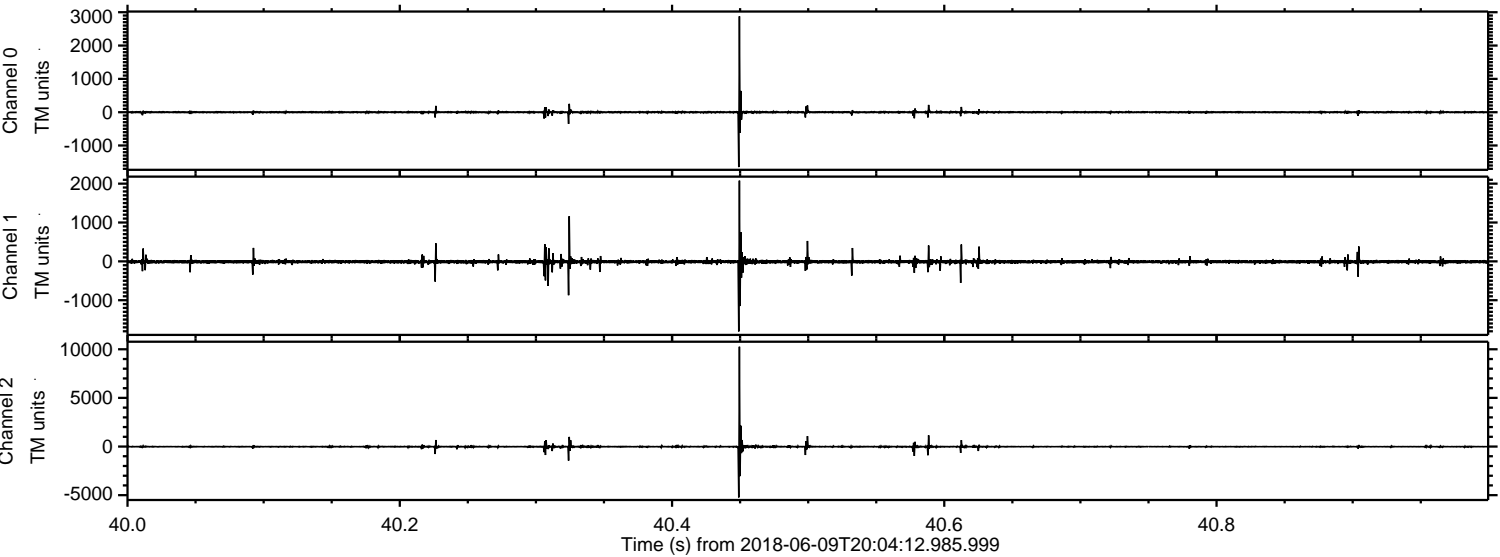


ELMAVAN 3D WAVEFORMS (Measured data sampled at 50 kHz) 51000 packets of 144 samples from 2018-06-09T20:04:12.985.999. Part 126/147

Processed Sat Jun 9 22:12:32 2018 by ELM ver.2012-10-06 from 001__elm20180609_200411__dat00.bin

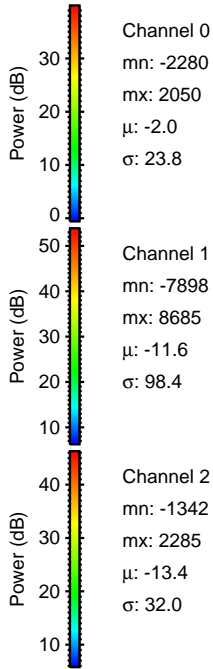
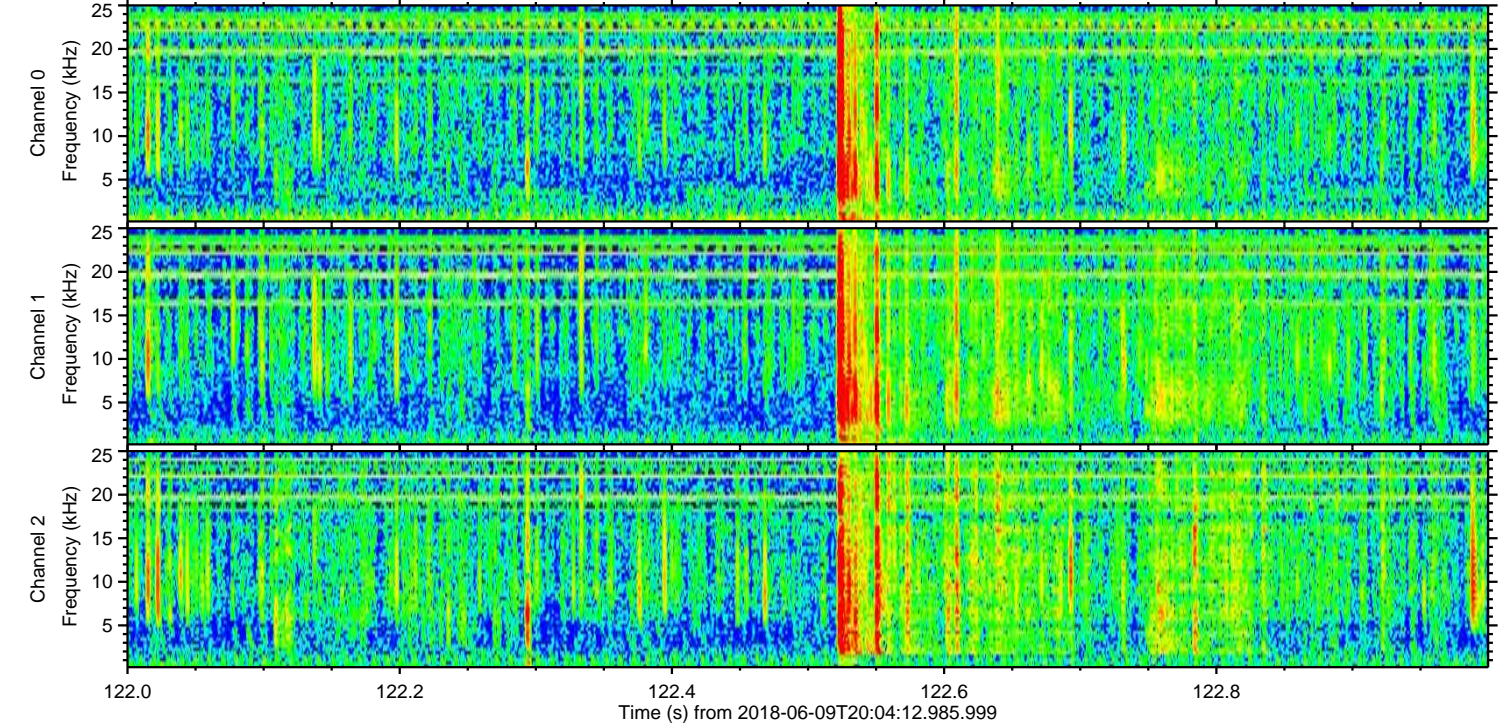
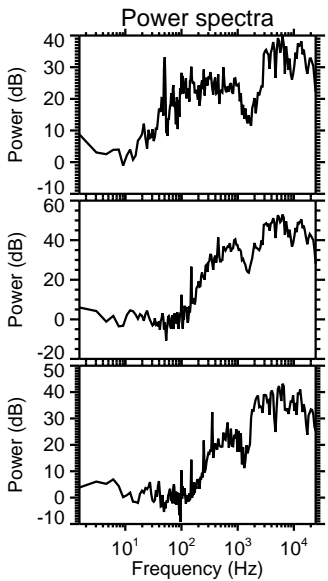
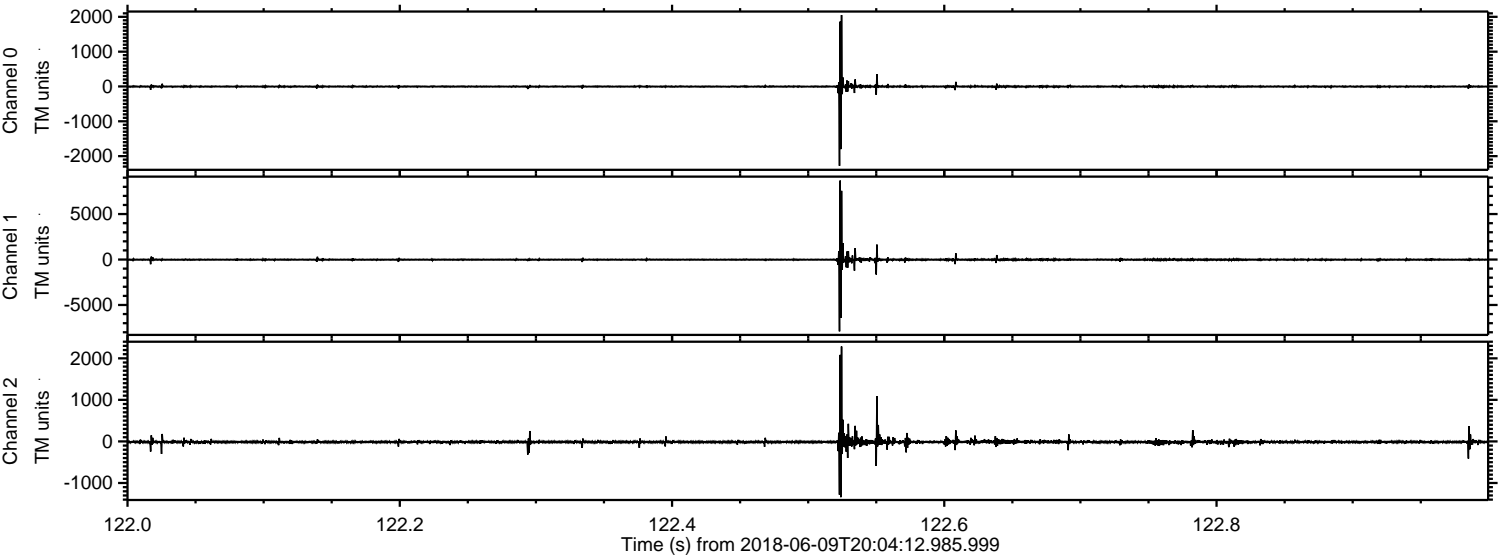


Processed Sat Jun 9 22:12:33 2018 by ELM ver.2012-10-06 from 001__elm20180609_200411__dat00.bin



ELMAVAN 3D WAVEFORMS (Measured data sampled at 50 kHz) 51000 packets of 144 samples from 2018-06-09T20:04:12.985.999. Part 123/147

Processed Sat Jun 9 22:12:34 2018 by ELM ver.2012-10-06 from 001__elm20180609_200411__dat00.bin

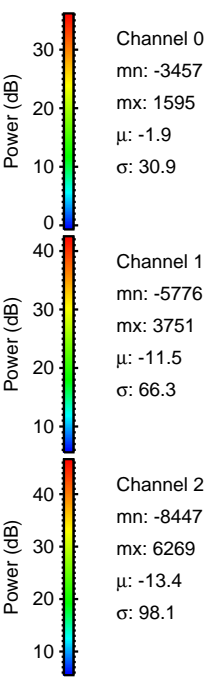
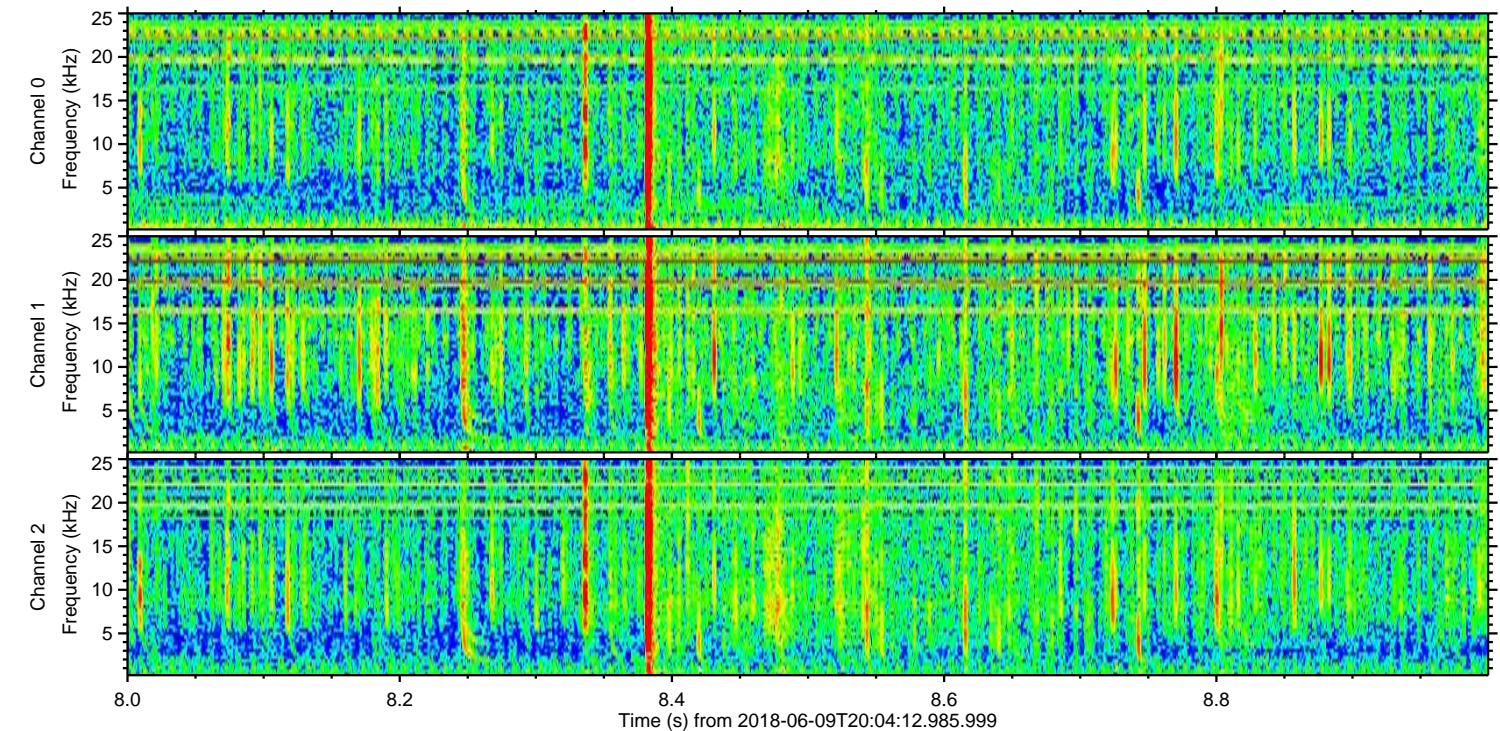
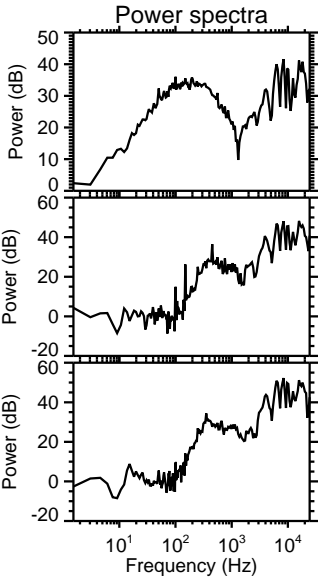
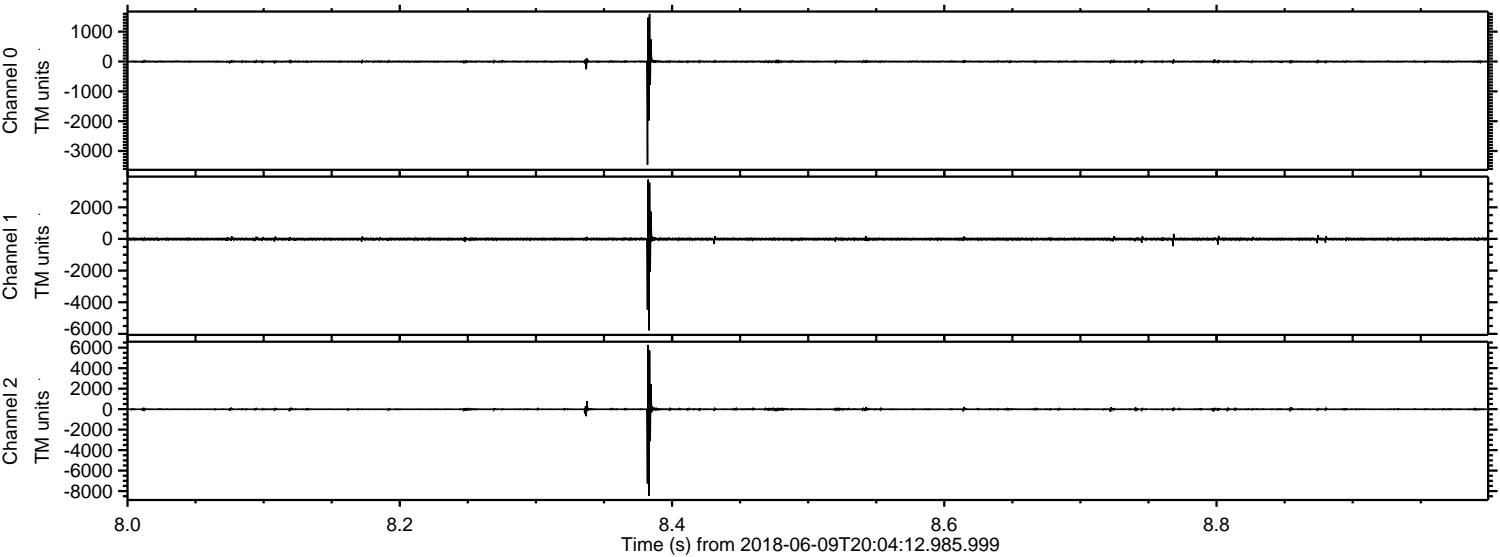


Channel 0
mn: -2280
mx: 2050
 μ : -2.0
 σ : 23.8

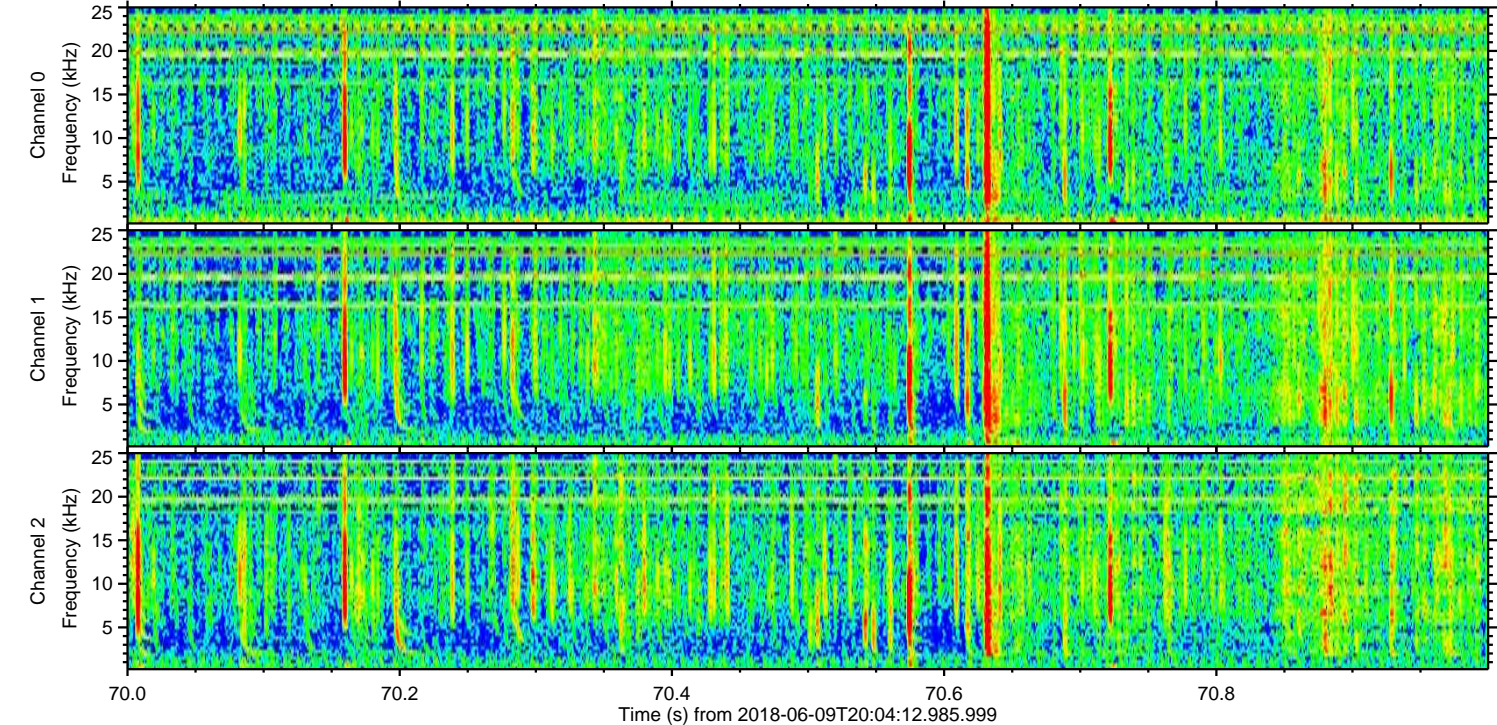
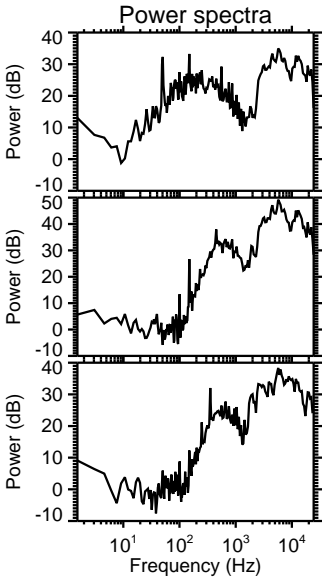
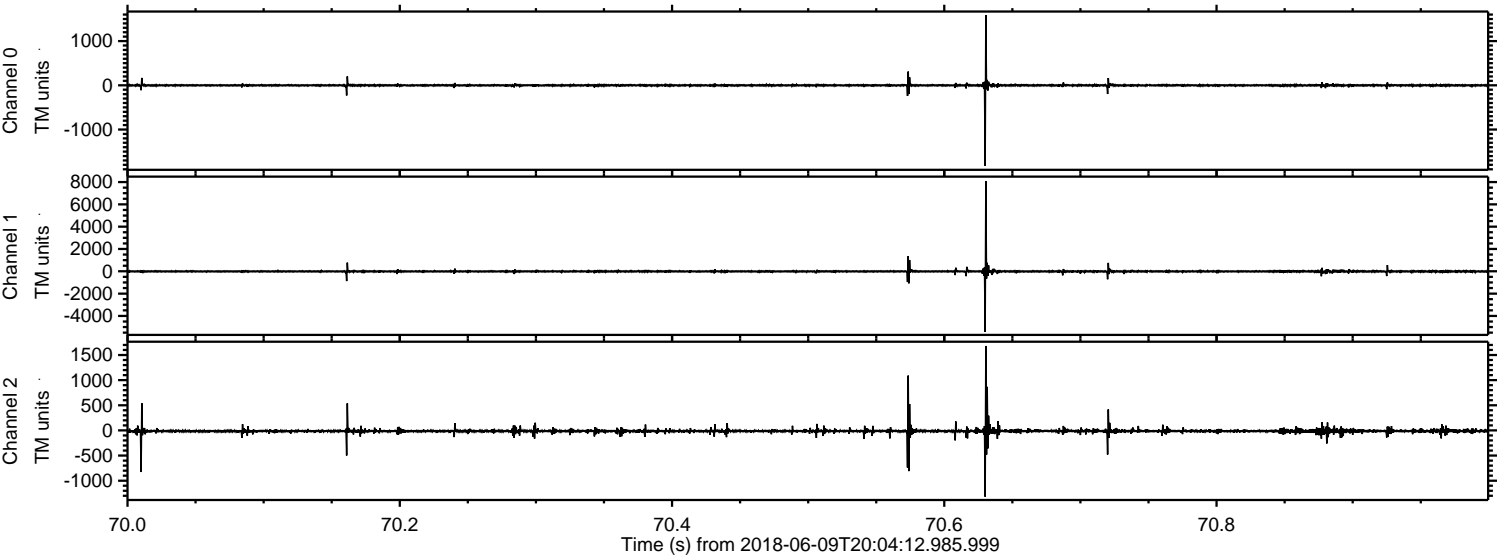
Channel 1
mn: -7898
mx: 8685
 μ : -11.6
 σ : 98.4

Channel 2
mn: -1342
mx: 2285
 μ : -13.4
 σ : 32.0

Processed Sat Jun 9 22:12:35 2018 by ELM ver.2012-10-06 from 001__elm20180609_200411__dat00.bin



Processed Sat Jun 9 22:12:36 2018 by ELM ver.2012-10-06 from 001__elm20180609_200411__dat00.bin



Channel 0
mn: -1821
mx: 1589
 μ : -1.9
 σ : 15.3

Channel 1
mn: -5430
mx: 8082
 μ : -11.5
 σ : 64.7

Channel 2
mn: -1318
mx: 1680
 μ : -13.3
 σ : 23.9

Processed Sat Jun 9 22:12:37 2018 by ELM ver.2012-10-06 from 001__elm20180609_200411__dat00.bin

