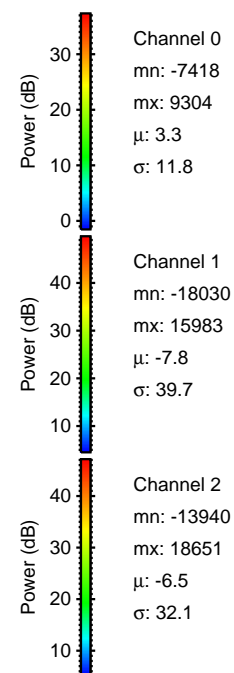
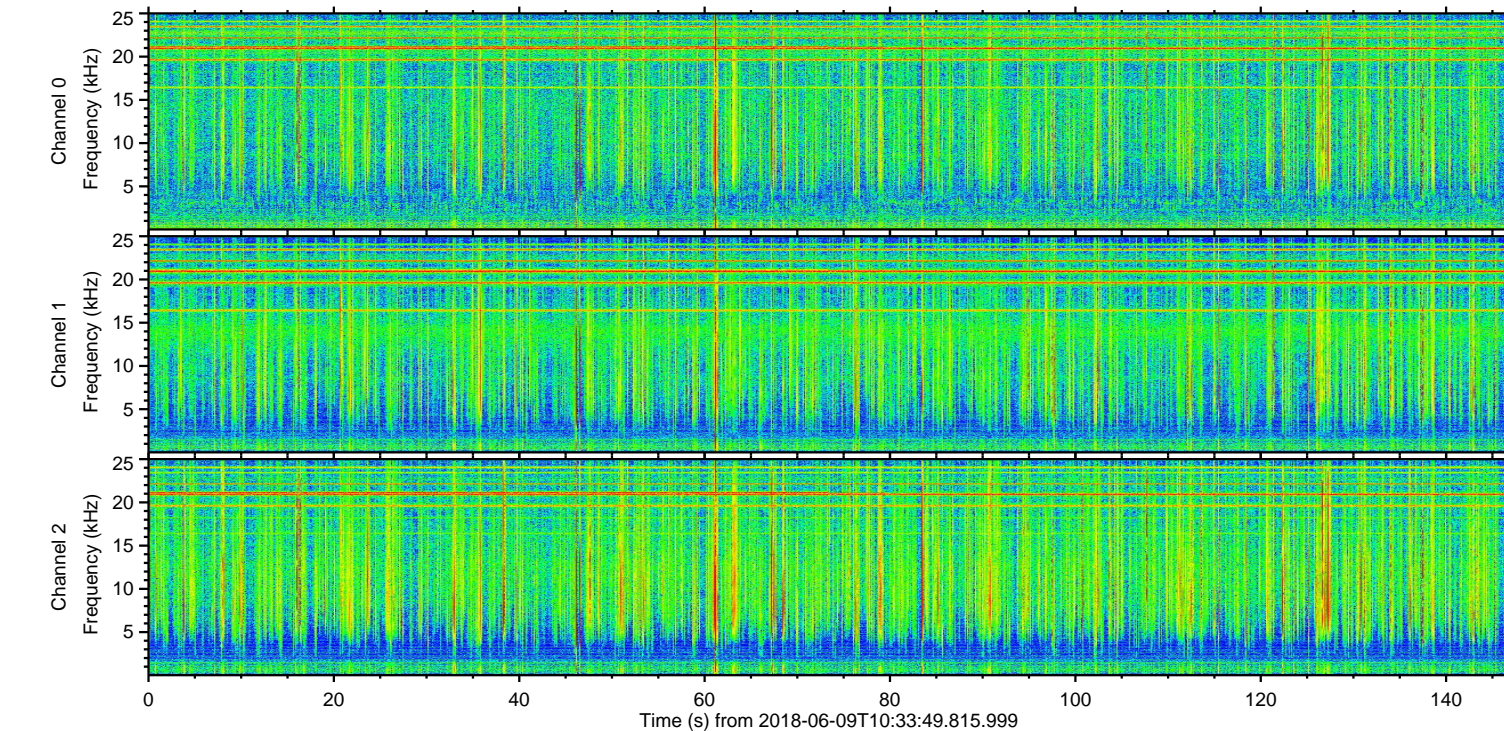
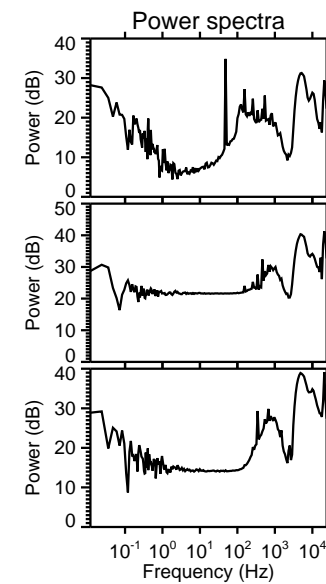
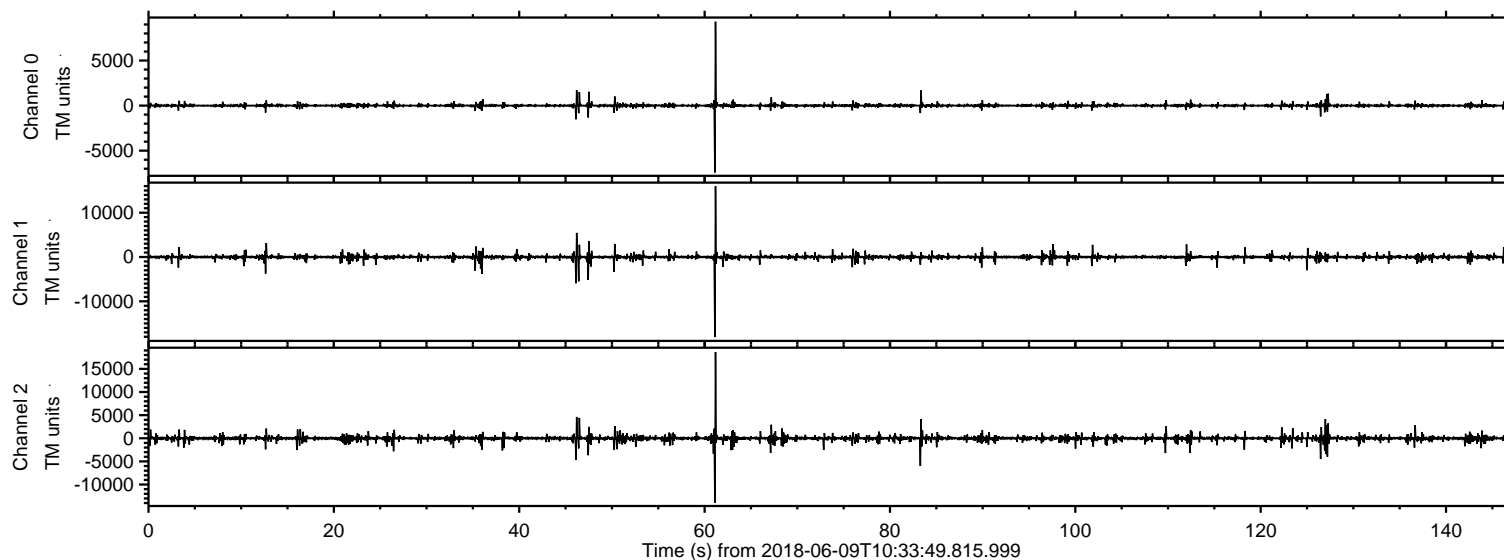
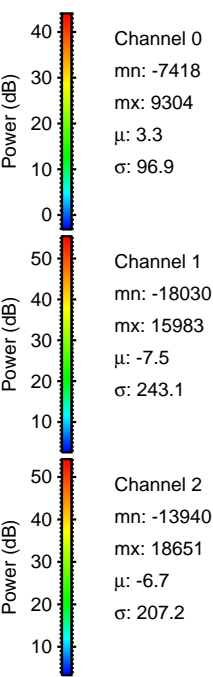
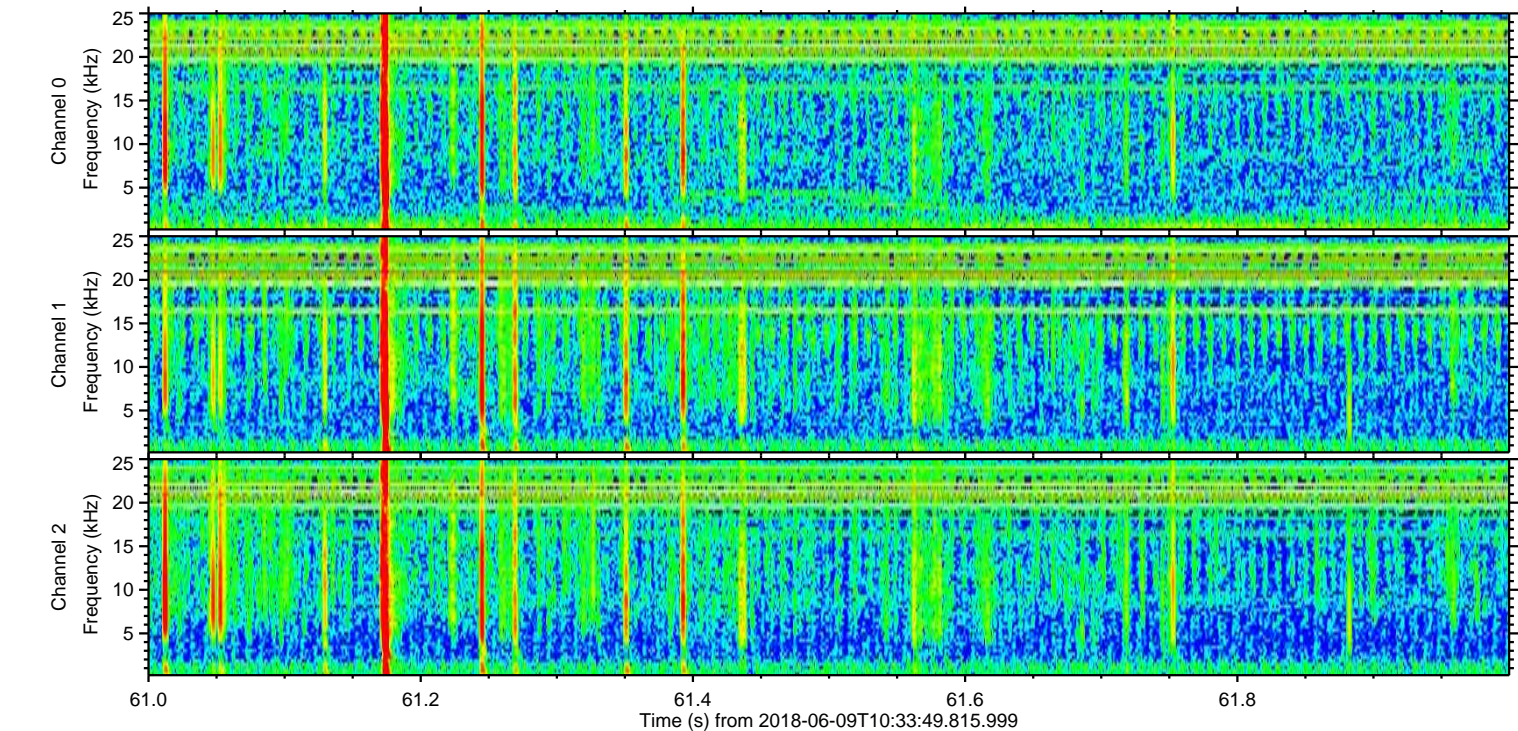
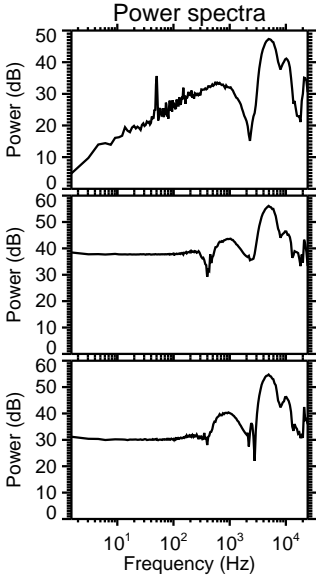
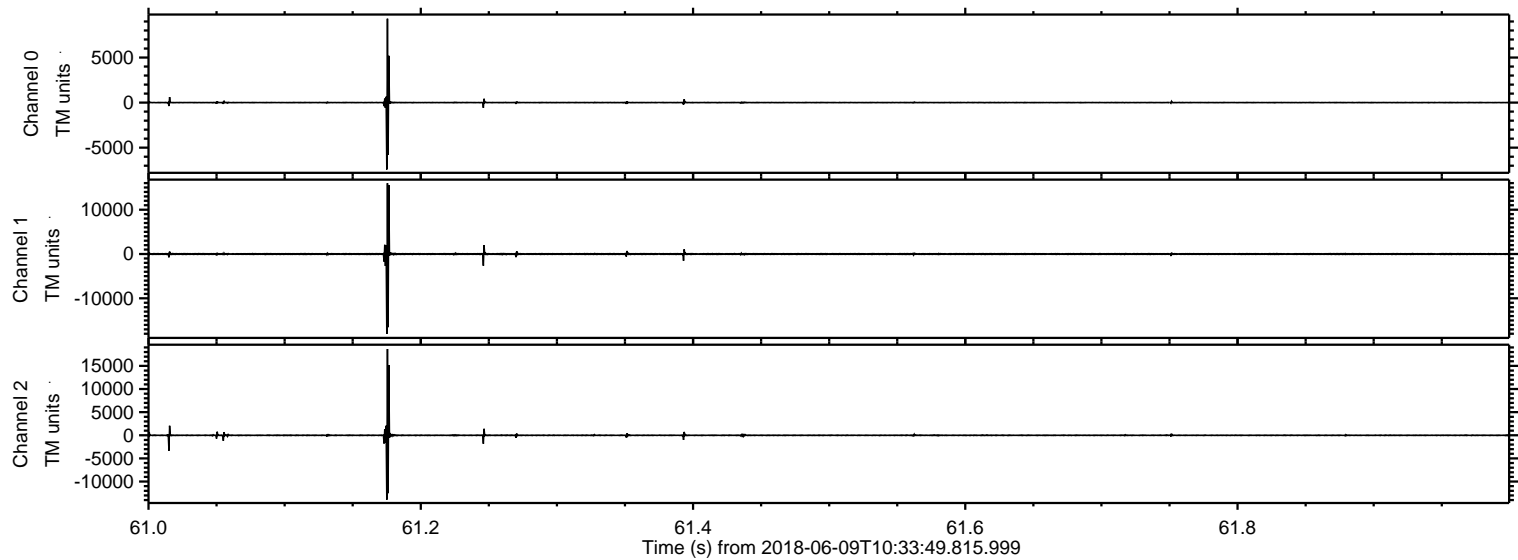


ELMAVAN 3D WAVEFORMS (Measured data sampled at 50 kHz) 51000 packets of 144 samples from 2018-06-09T10:33:49.815.999.

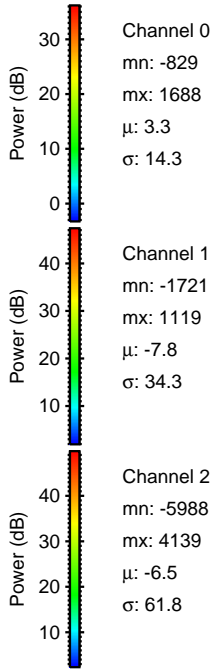
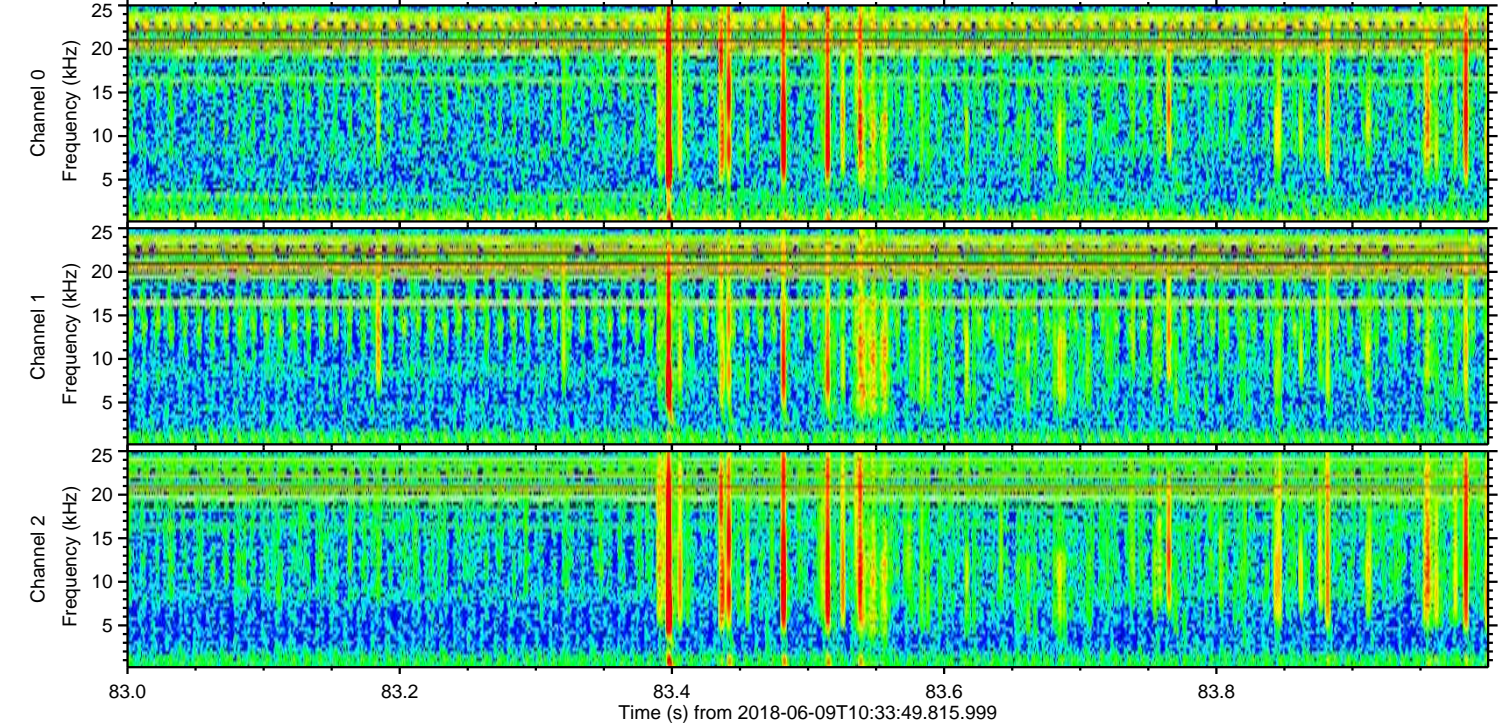
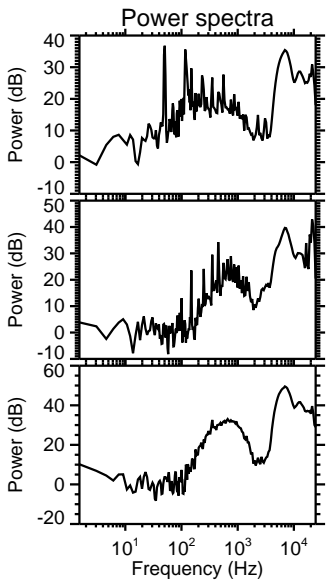
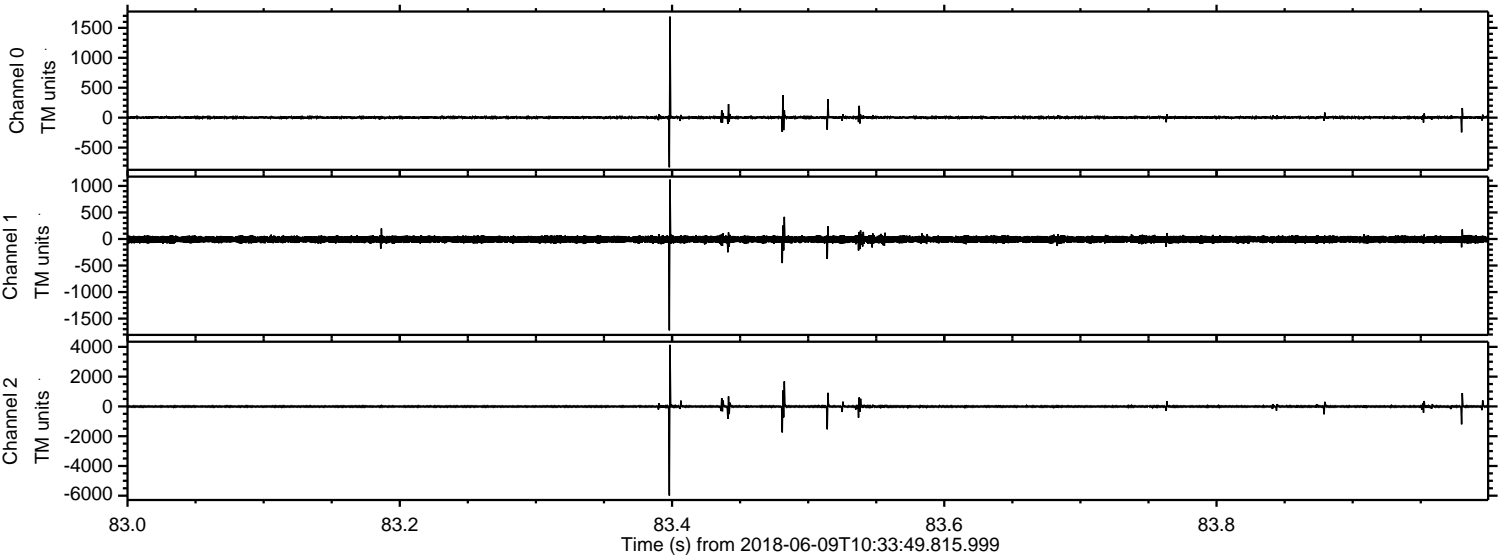
Processed Sat Jun 9 12:41:35 2018 by ELM ver.2012-10-06 from 001__elm20180609_103348__dat00.bin



Processed Sat Jun 9 12:41:41 2018 by ELM ver.2012-10-06 from 001__elm20180609_103348__dat00.bin



Processed Sat Jun 9 12:41:42 2018 by ELM ver.2012-10-06 from 001__elm20180609_103348__dat00.bin



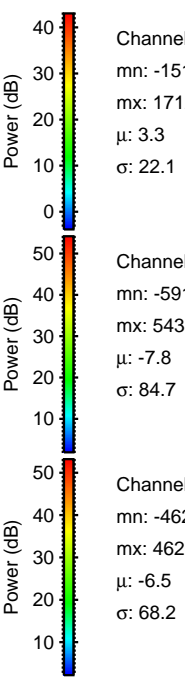
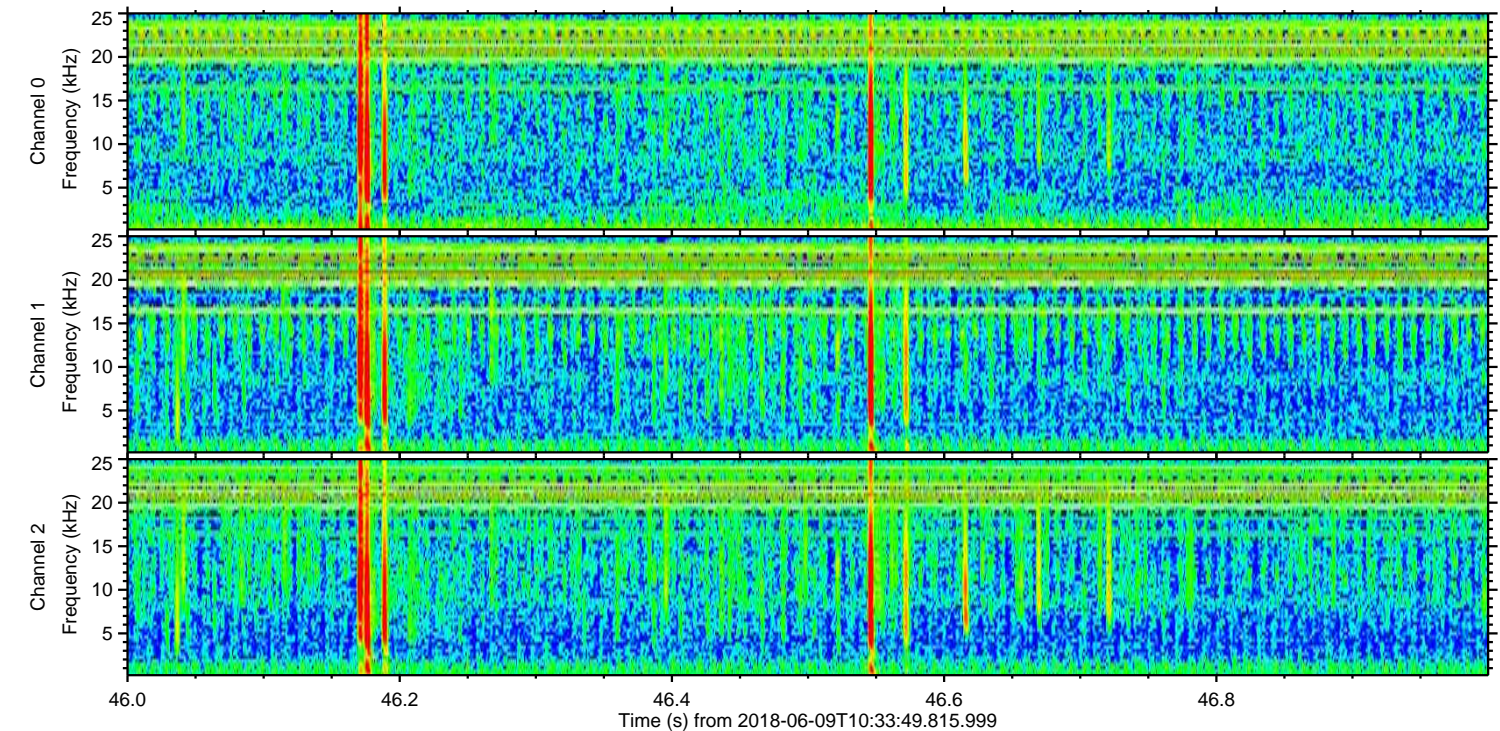
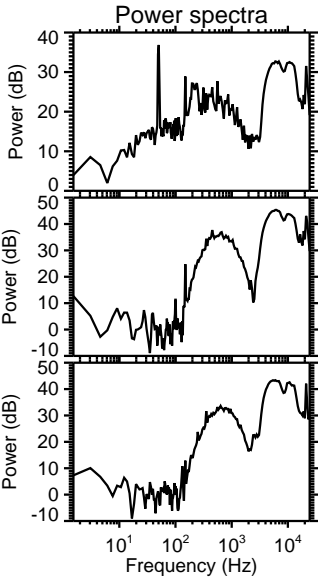
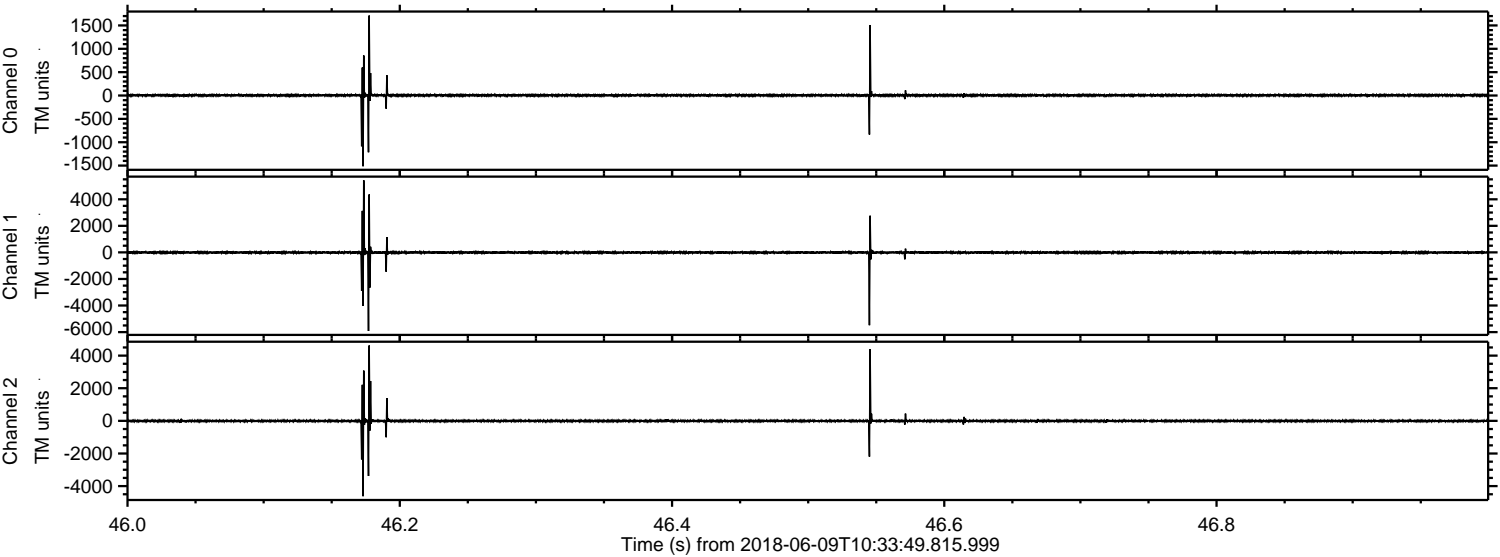
Channel 0
mn: -829
mx: 1688
 μ : 3.3
 σ : 14.3

Channel 1
mn: -1721
mx: 1119
 μ : -7.8
 σ : 34.3

Channel 2
mn: -5988
mx: 4139
 μ : -6.5
 σ : 61.8

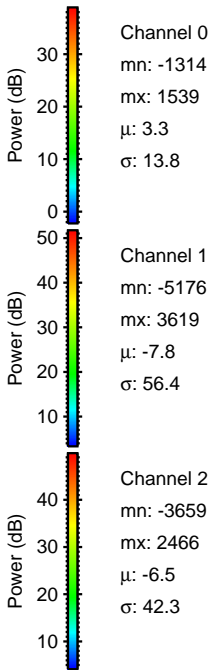
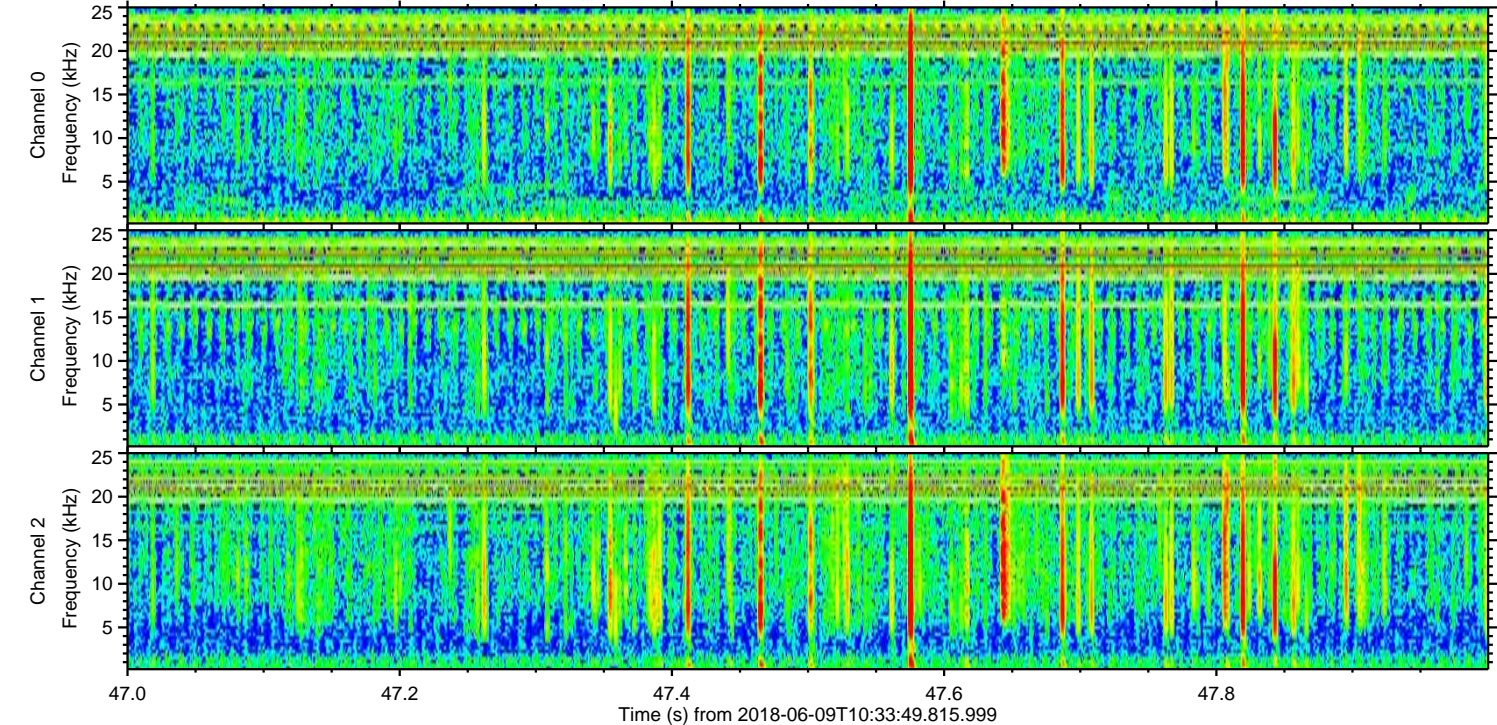
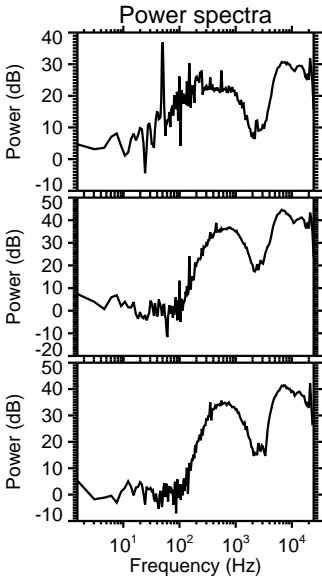
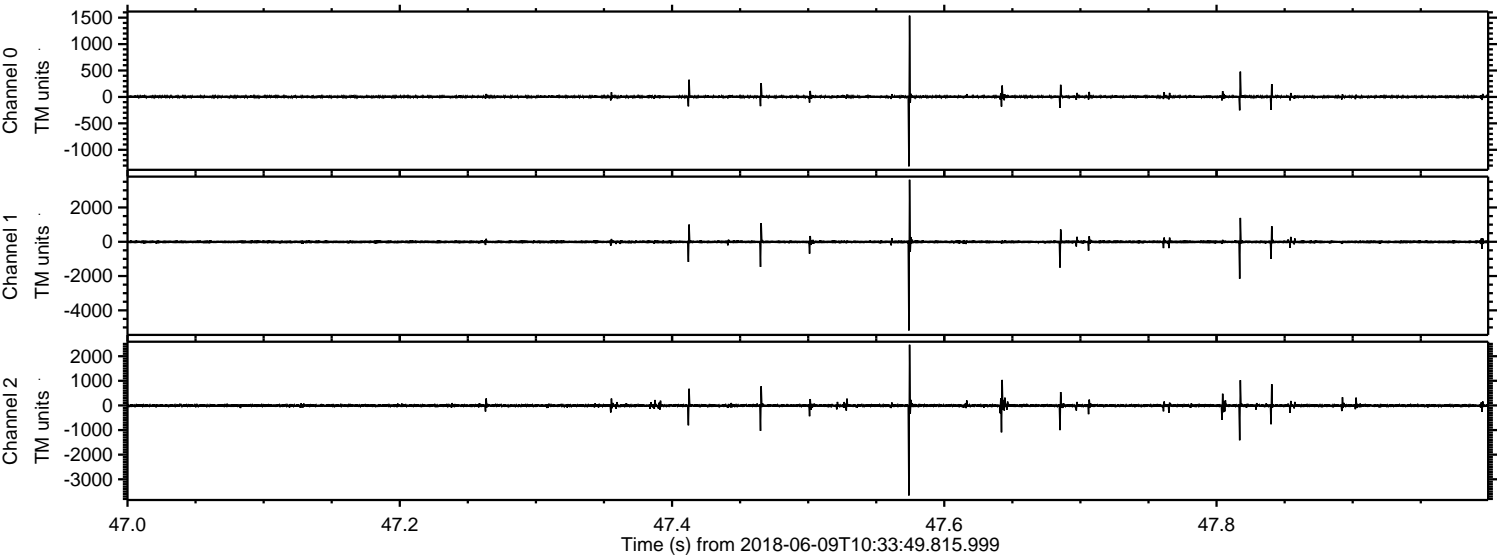
ELMAVAN 3D WAVEFORMS (Measured data sampled at 50 kHz) 51000 packets of 144 samples from 2018-06-09T10:33:49.815.999. Part 47/147

Processed Sat Jun 9 12:41:42 2018 by ELM ver.2012-10-06 from 001__elm20180609_103348__dat00.bin



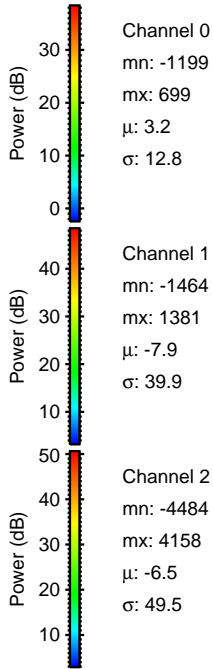
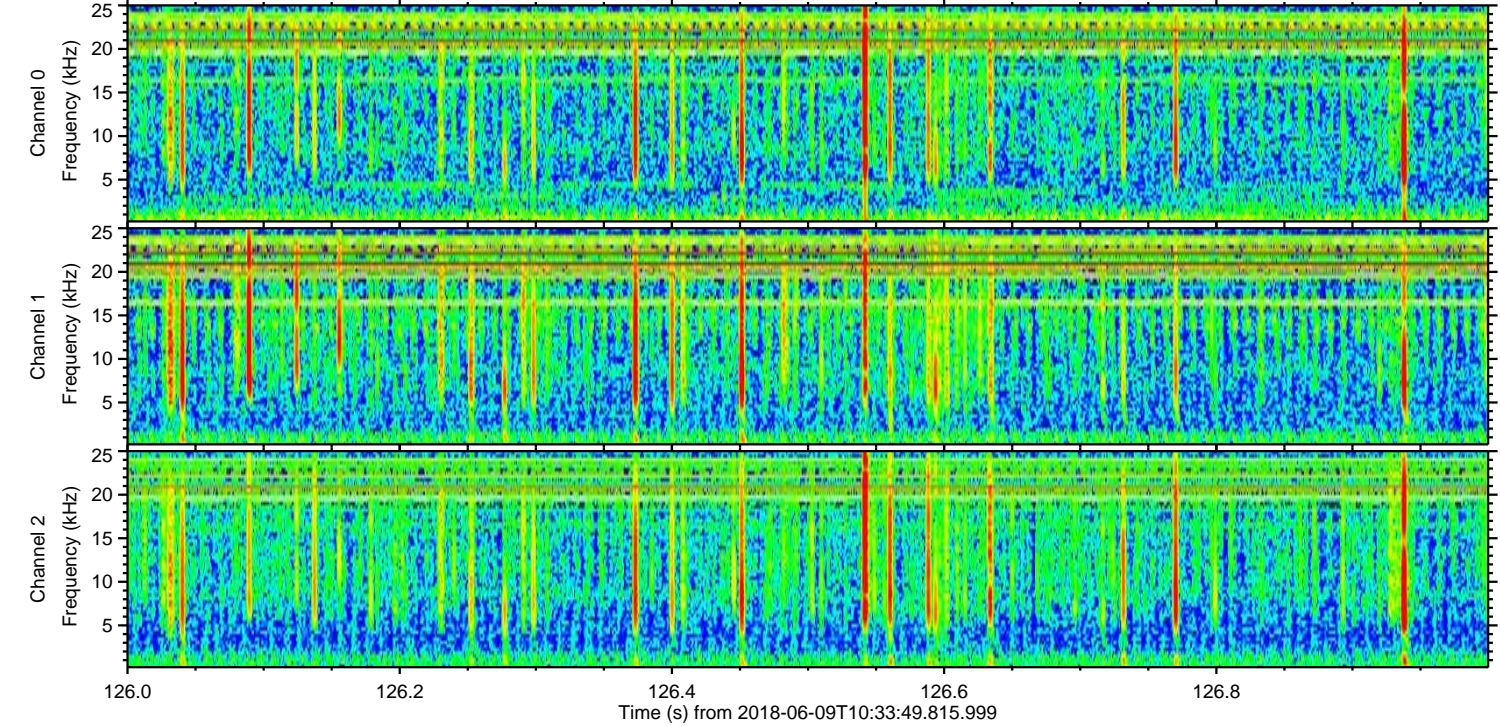
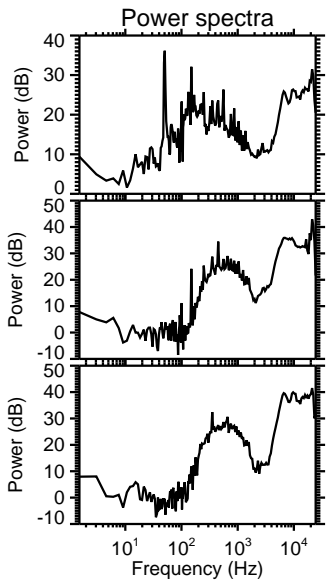
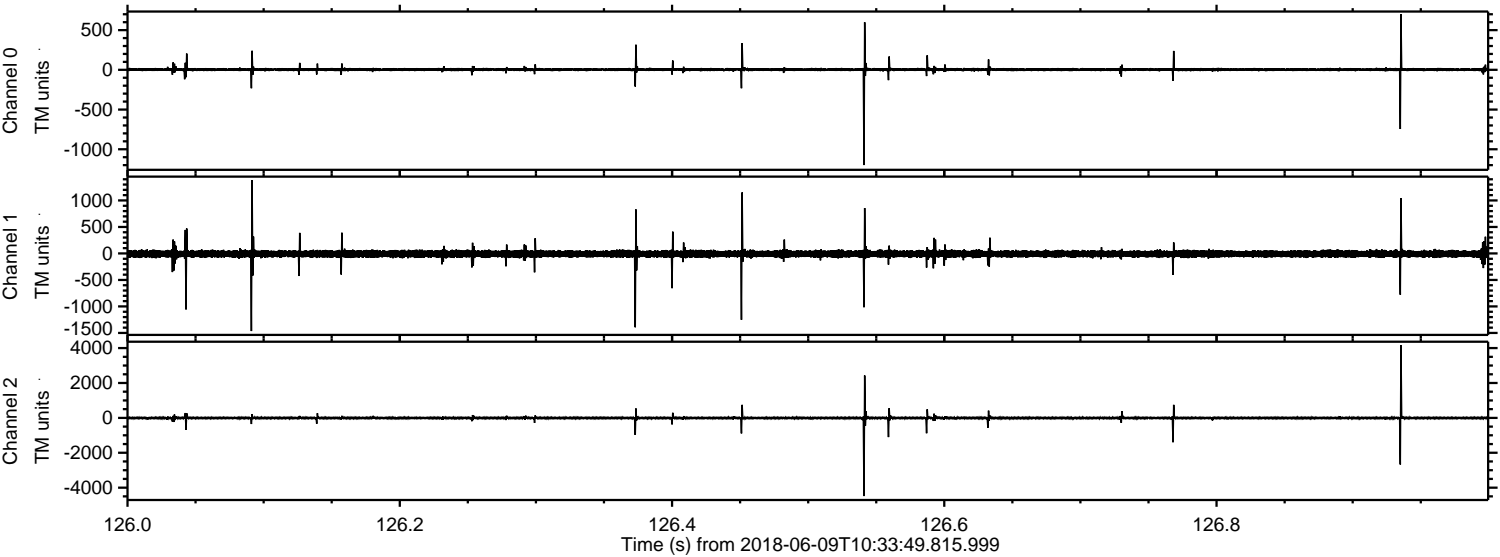
ELMAVAN 3D WAVEFORMS (Measured data sampled at 50 kHz) 51000 packets of 144 samples from 2018-06-09T10:33:49.815.999. Part 48/147

Processed Sat Jun 9 12:41:43 2018 by ELM ver.2012-10-06 from 001__elm20180609_103348__dat00.bin



ELMAVAN 3D WAVEFORMS (Measured data sampled at 50 kHz) 51000 packets of 144 samples from 2018-06-09T10:33:49.815.999. Part 127/147

Processed Sat Jun 9 12:41:44 2018 by ELM ver.2012-10-06 from 001__elm20180609_103348__dat00.bin



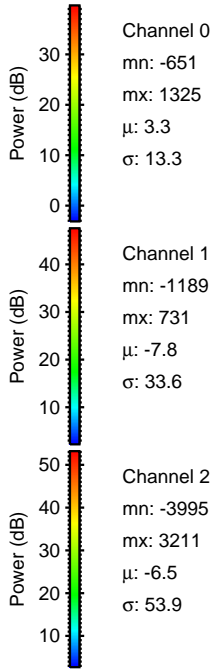
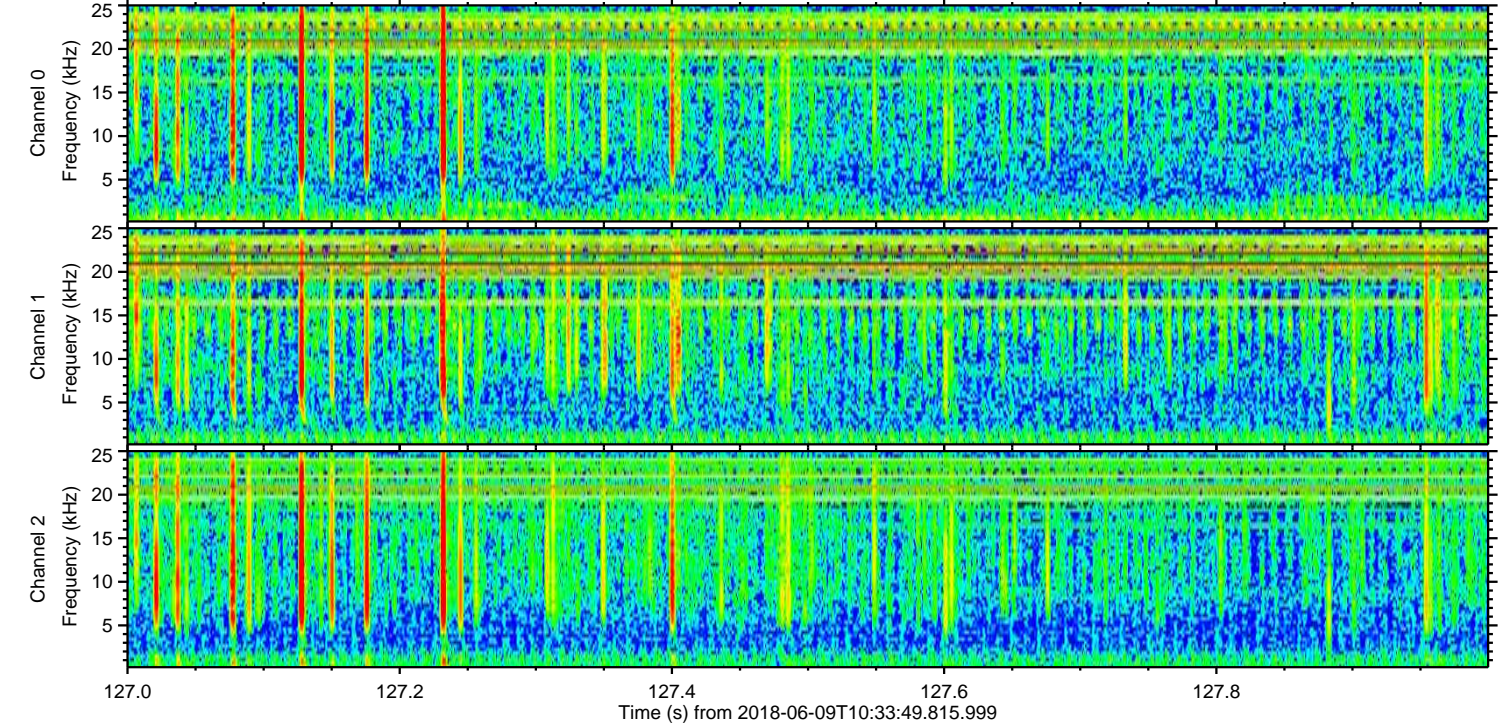
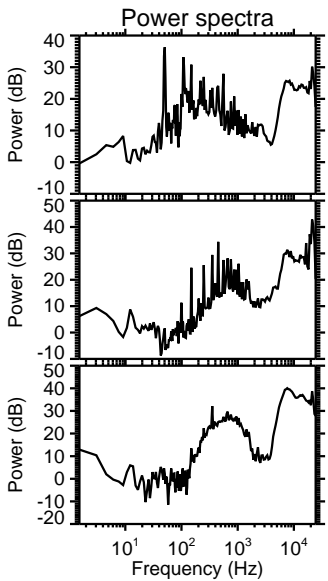
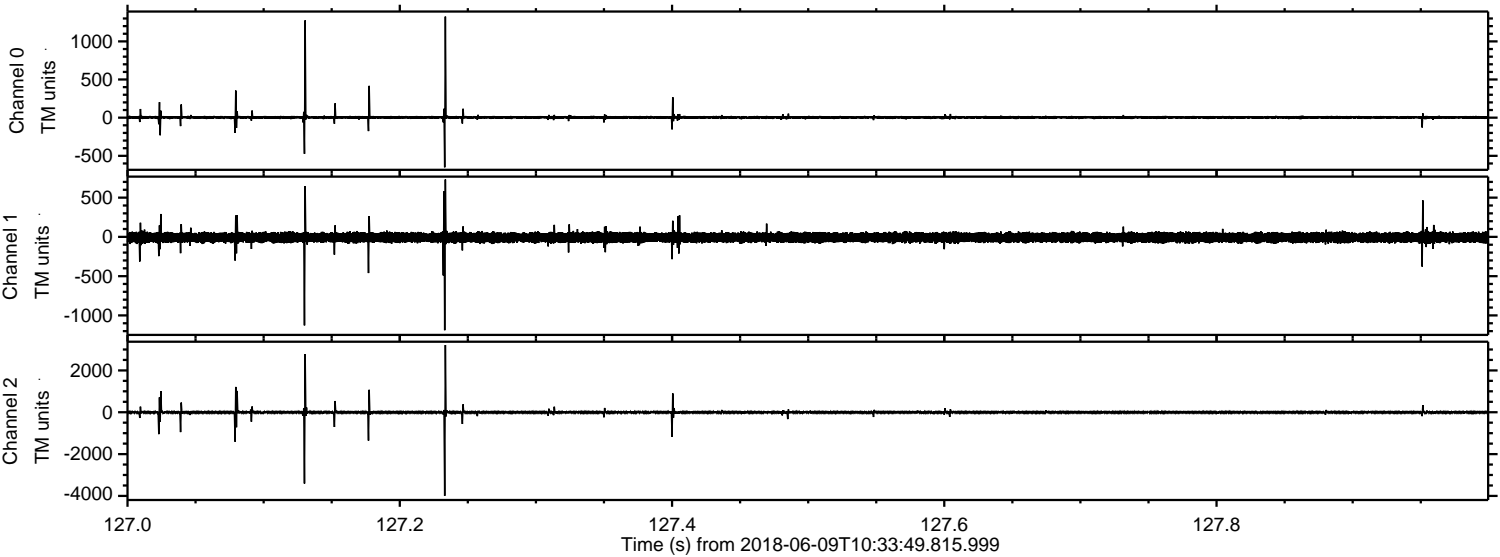
Channel 0
mn: -1199
mx: 699
 μ : 3.2
 σ : 12.8

Channel 1
mn: -1464
mx: 1381
 μ : -7.9
 σ : 39.9

Channel 2
mn: -4484
mx: 4158
 μ : -6.5
 σ : 49.5

ELMAVAN 3D WAVEFORMS (Measured data sampled at 50 kHz) 51000 packets of 144 samples from 2018-06-09T10:33:49.815.999. Part 128/147

Processed Sat Jun 9 12:41:44 2018 by ELM ver.2012-10-06 from 001__elm20180609_103348__dat00.bin

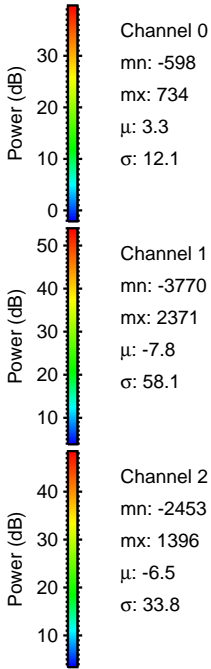
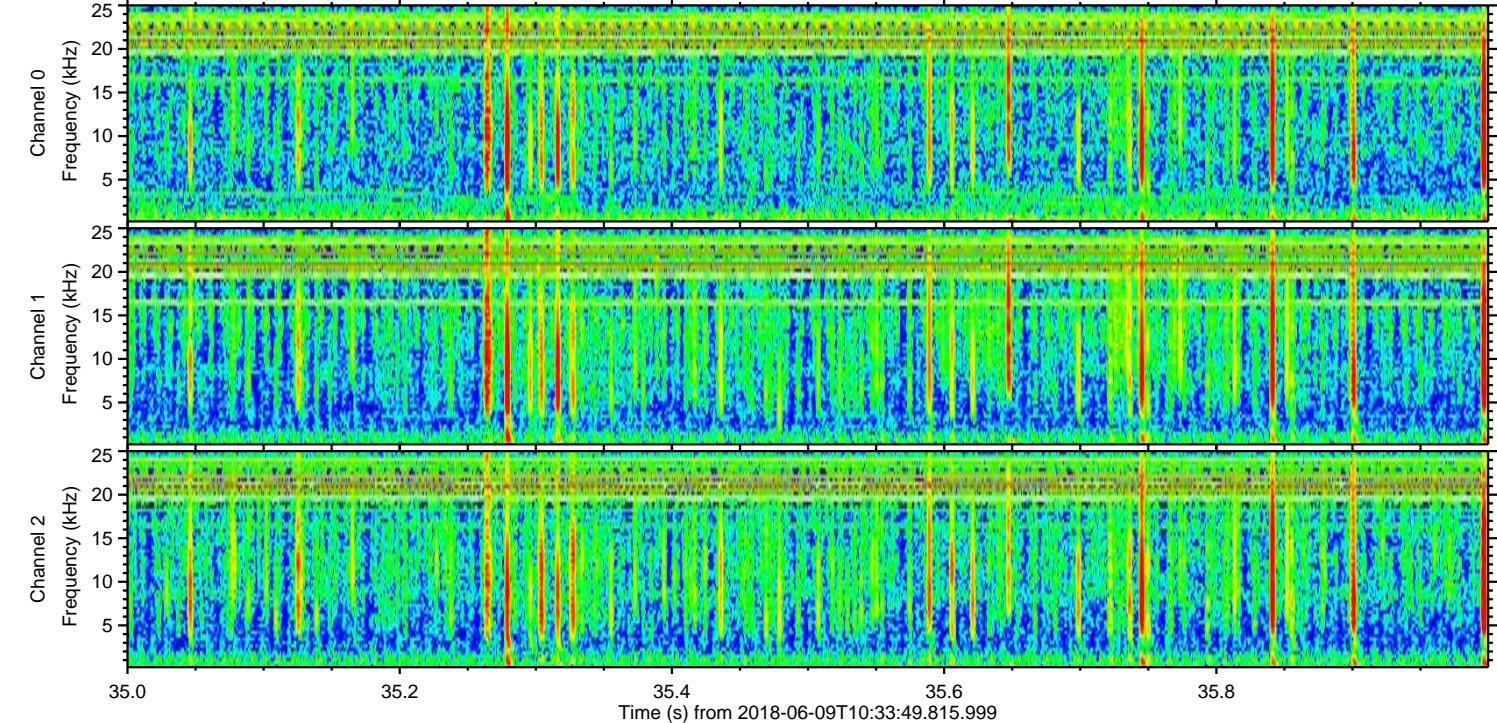
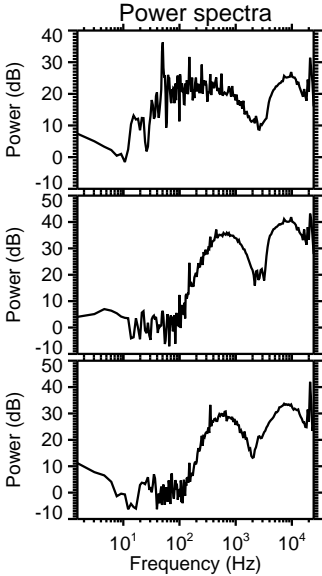
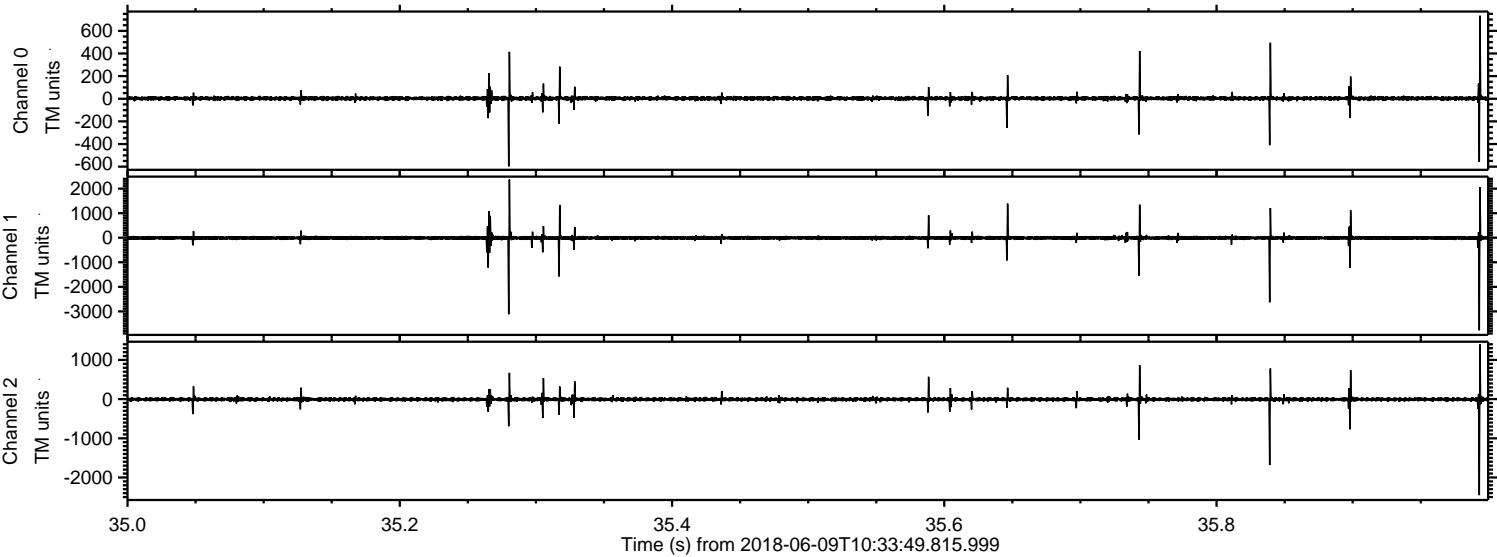


Channel 0
mn: -651
mx: 1325
 μ : 3.3
 σ : 13.3

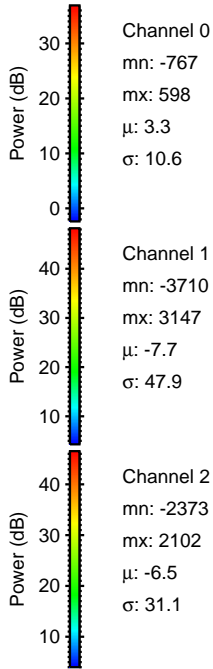
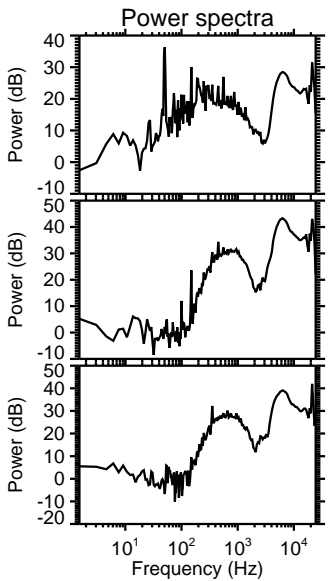
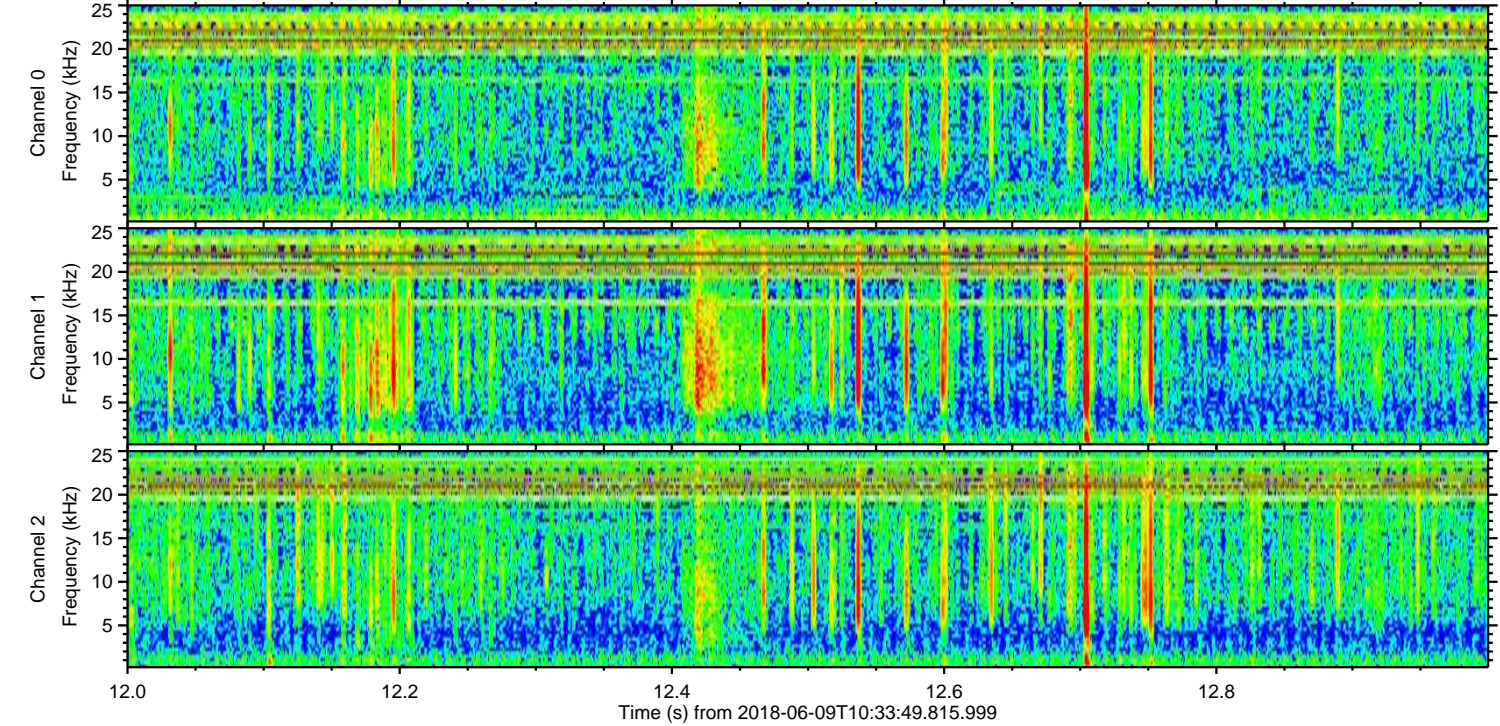
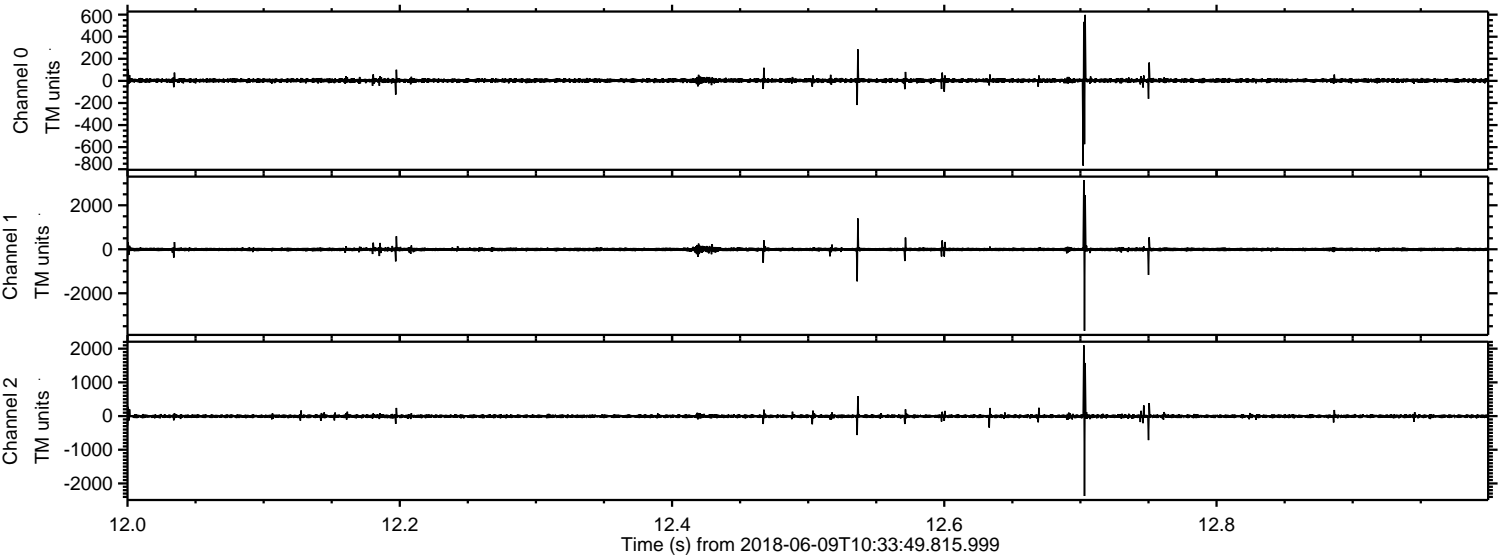
Channel 1
mn: -1189
mx: 731
 μ : -7.8
 σ : 33.6

Channel 2
mn: -3995
mx: 3211
 μ : -6.5
 σ : 53.9

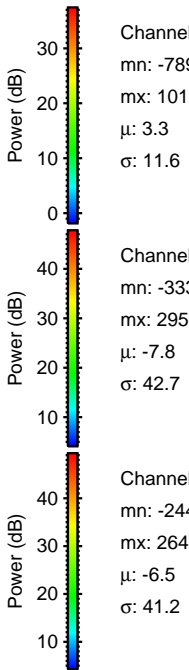
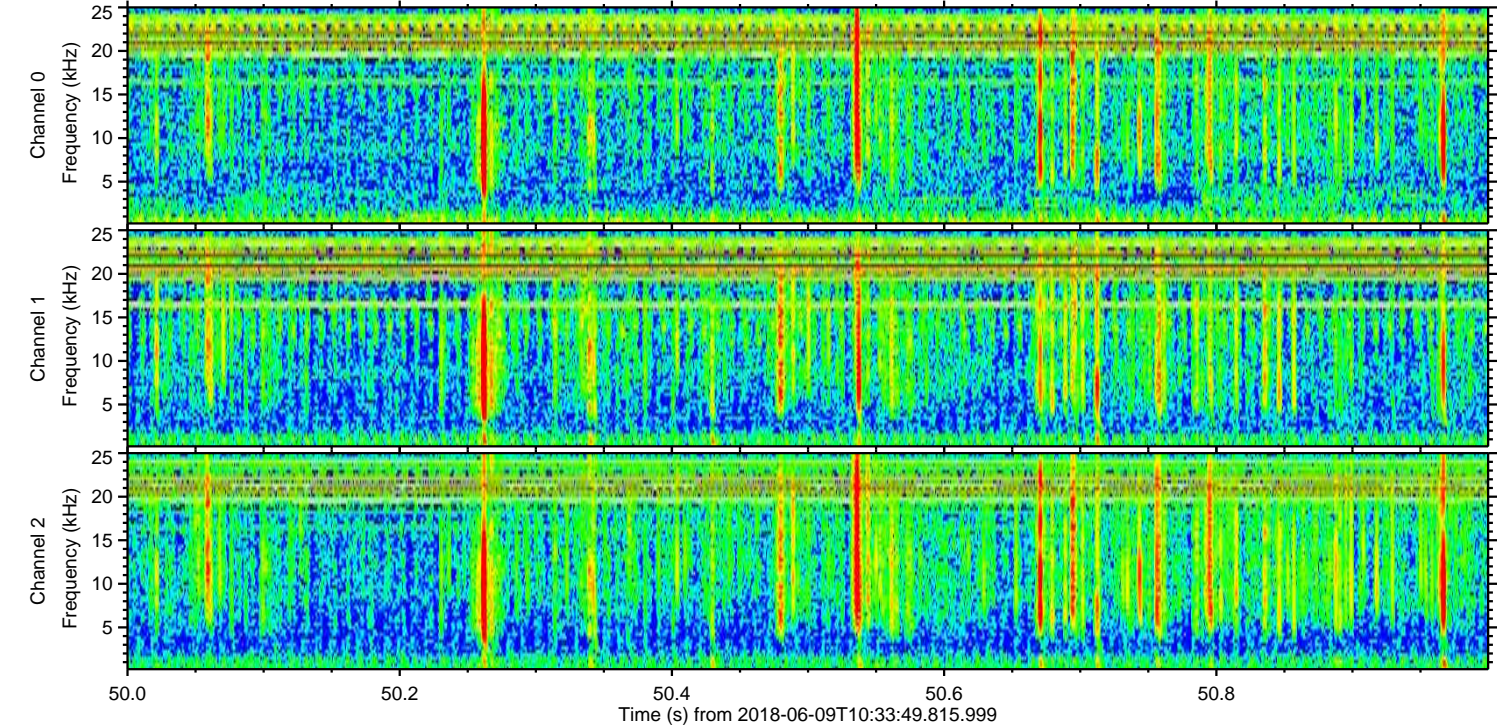
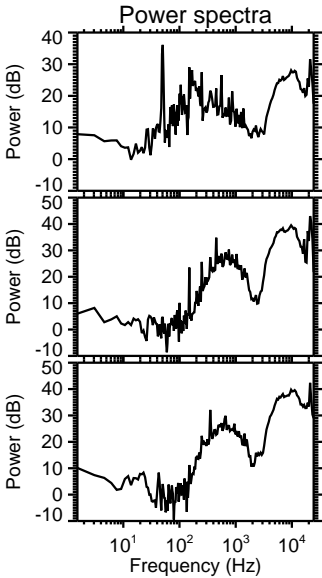
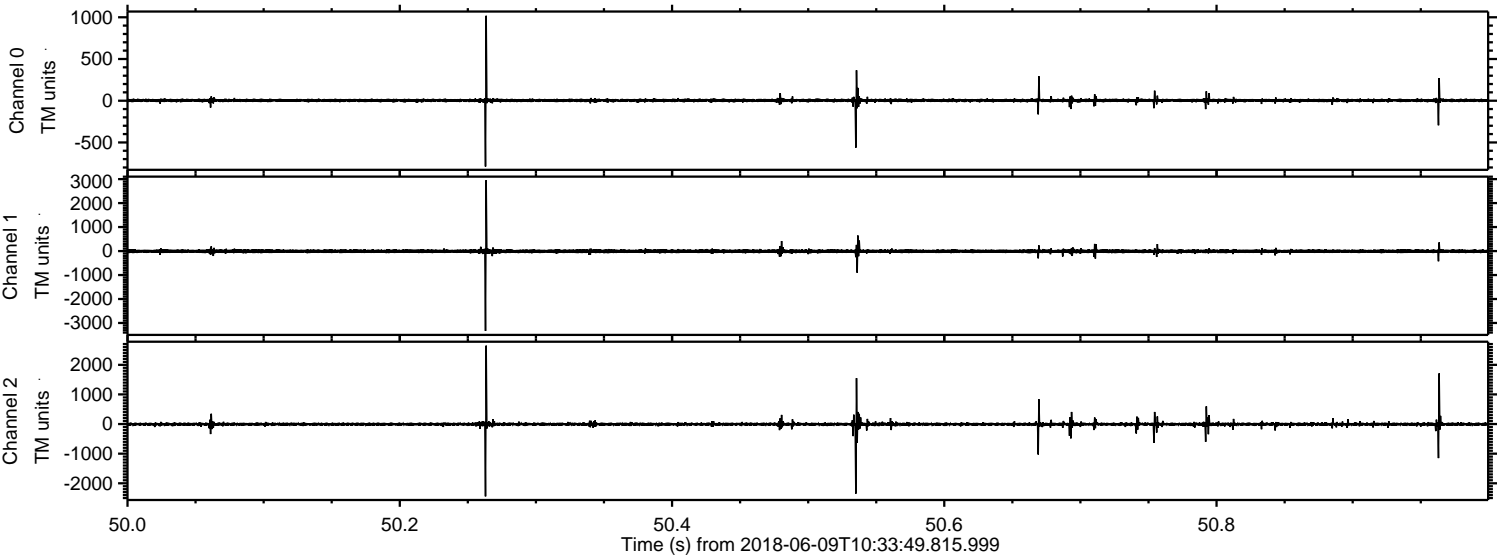
Processed Sat Jun 9 12:41:45 2018 by ELM ver.2012-10-06 from 001__elm20180609_103348__dat00.bin



Processed Sat Jun 9 12:41:46 2018 by ELM ver.2012-10-06 from 001__elm20180609_103348__dat00.bin



Processed Sat Jun 9 12:41:46 2018 by ELM ver.2012-10-06 from 001__elm20180609_103348__dat00.bin



Processed Sat Jun 9 12:41:47 2018 by ELM ver.2012-10-06 from 001__elm20180609_103348__dat00.bin

