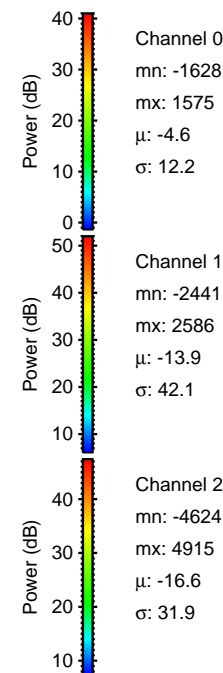
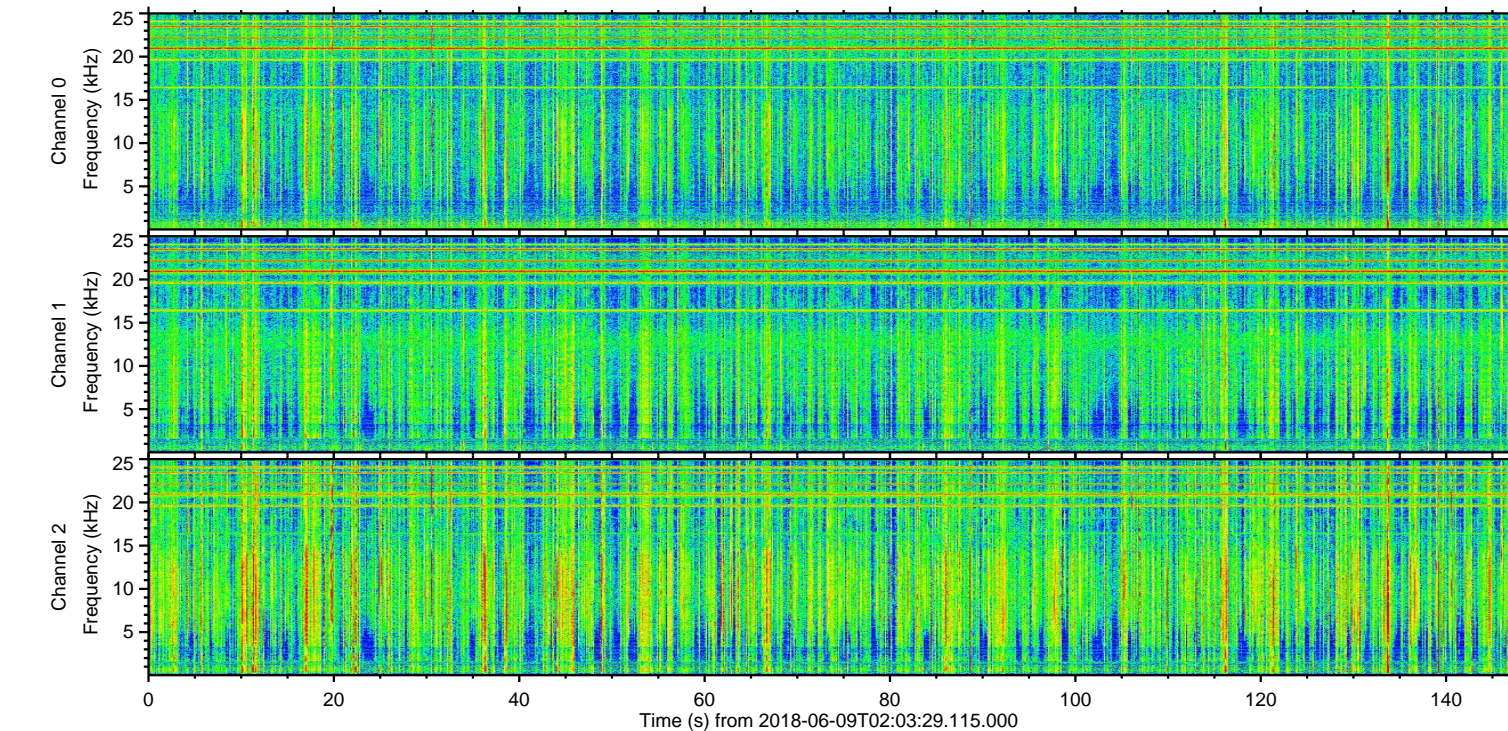
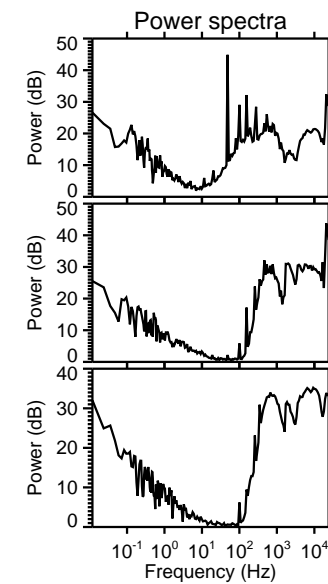
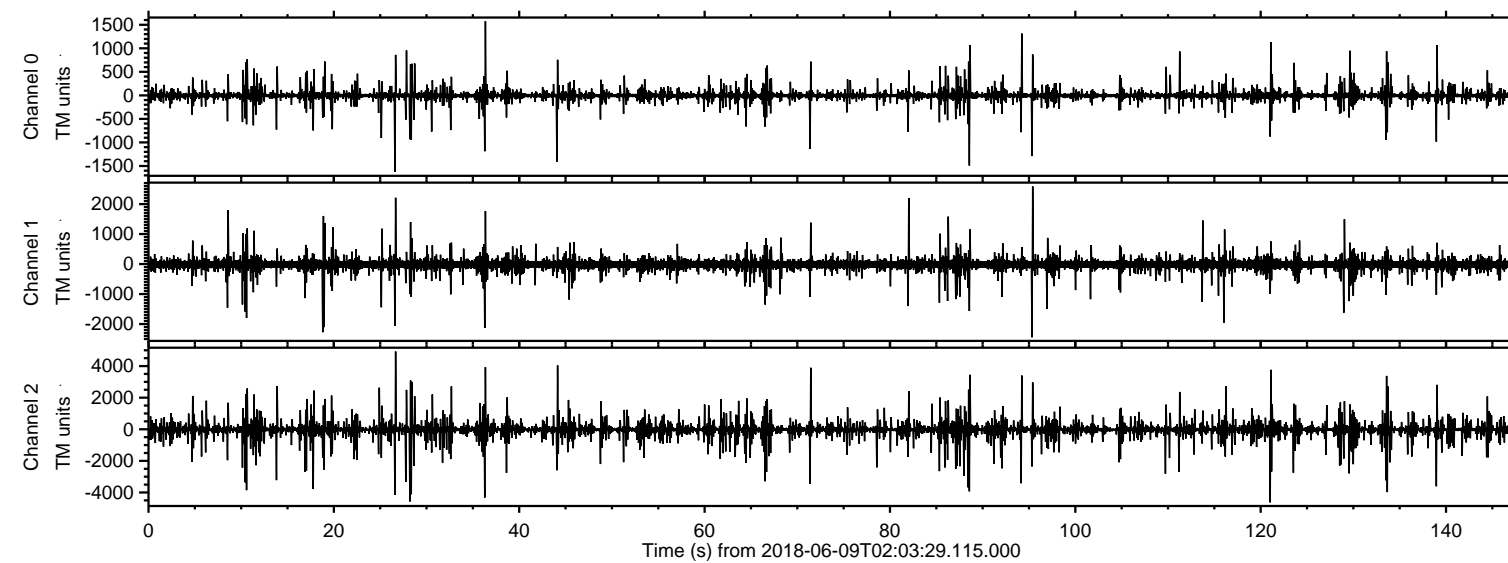


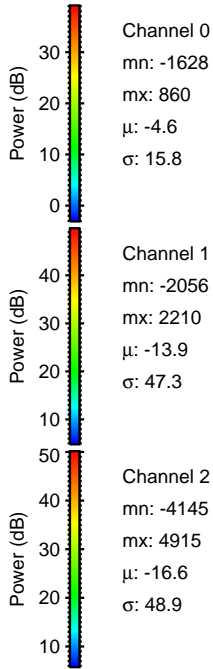
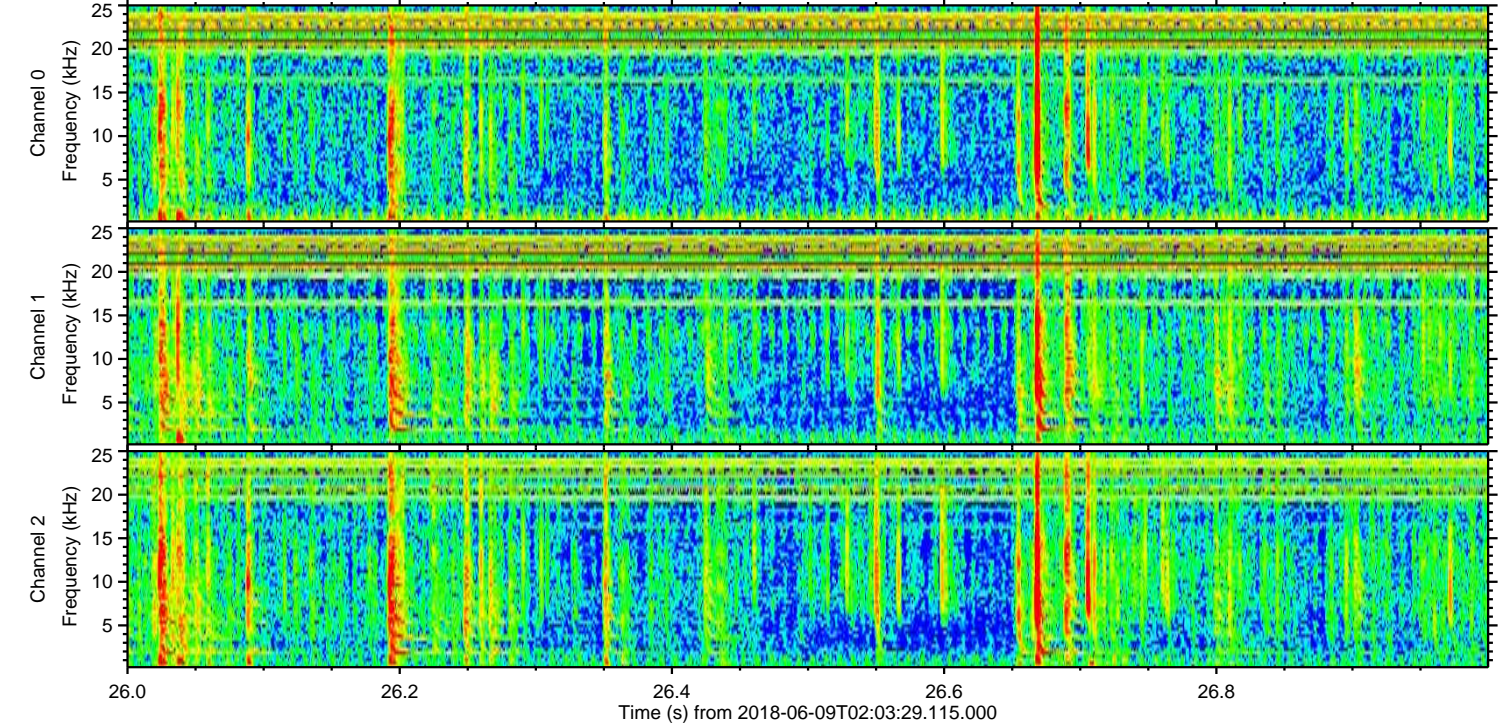
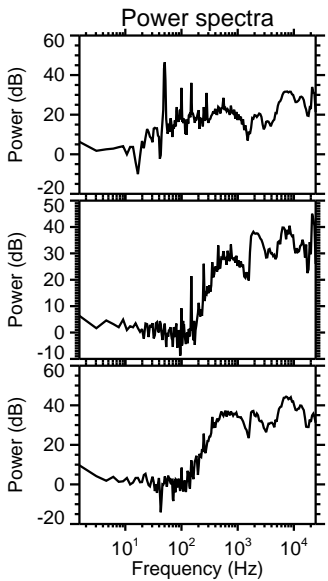
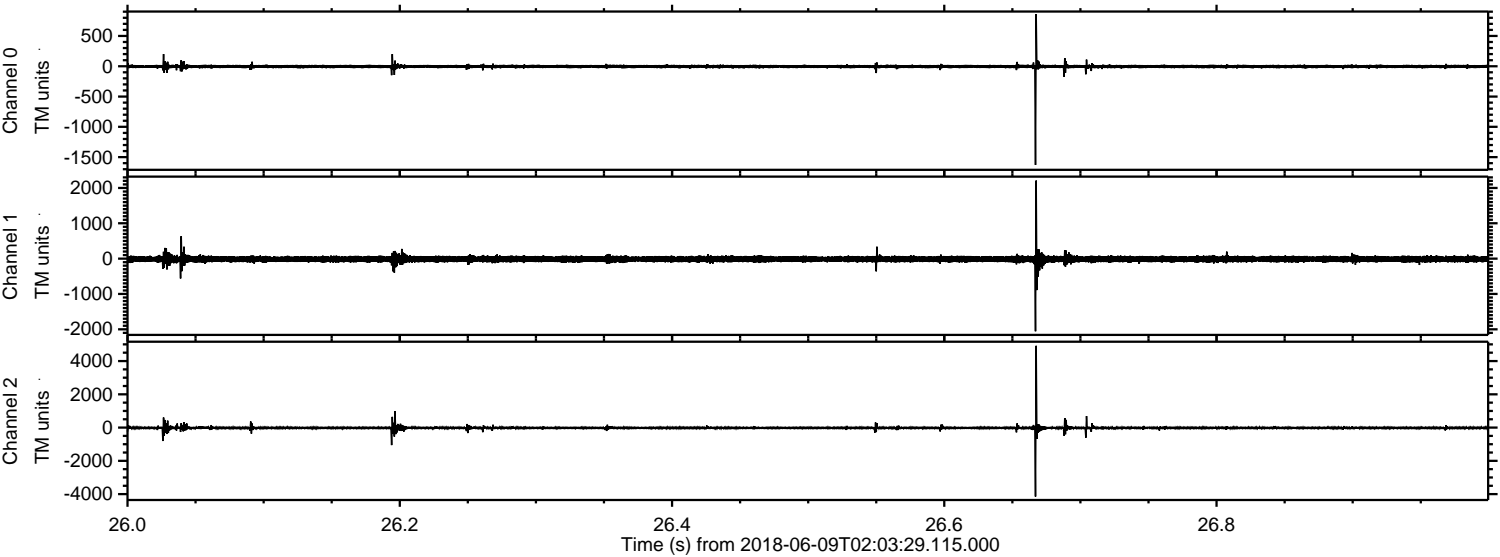
ELMAVAN 3D WAVEFORMS (Measured data sampled at 50 kHz) 51000 packets of 144 samples from 2018-06-09T02:03:29.115.000.

Processed Sat Jun 9 04:11:23 2018 by ELM ver.2012-10-06 from 001__elm20180609_020328__dat00.bin



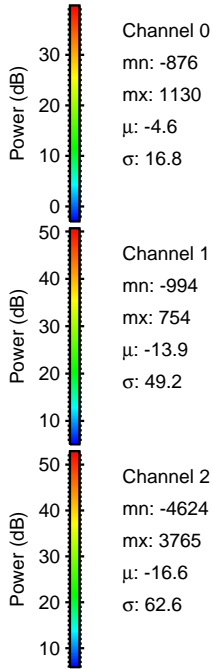
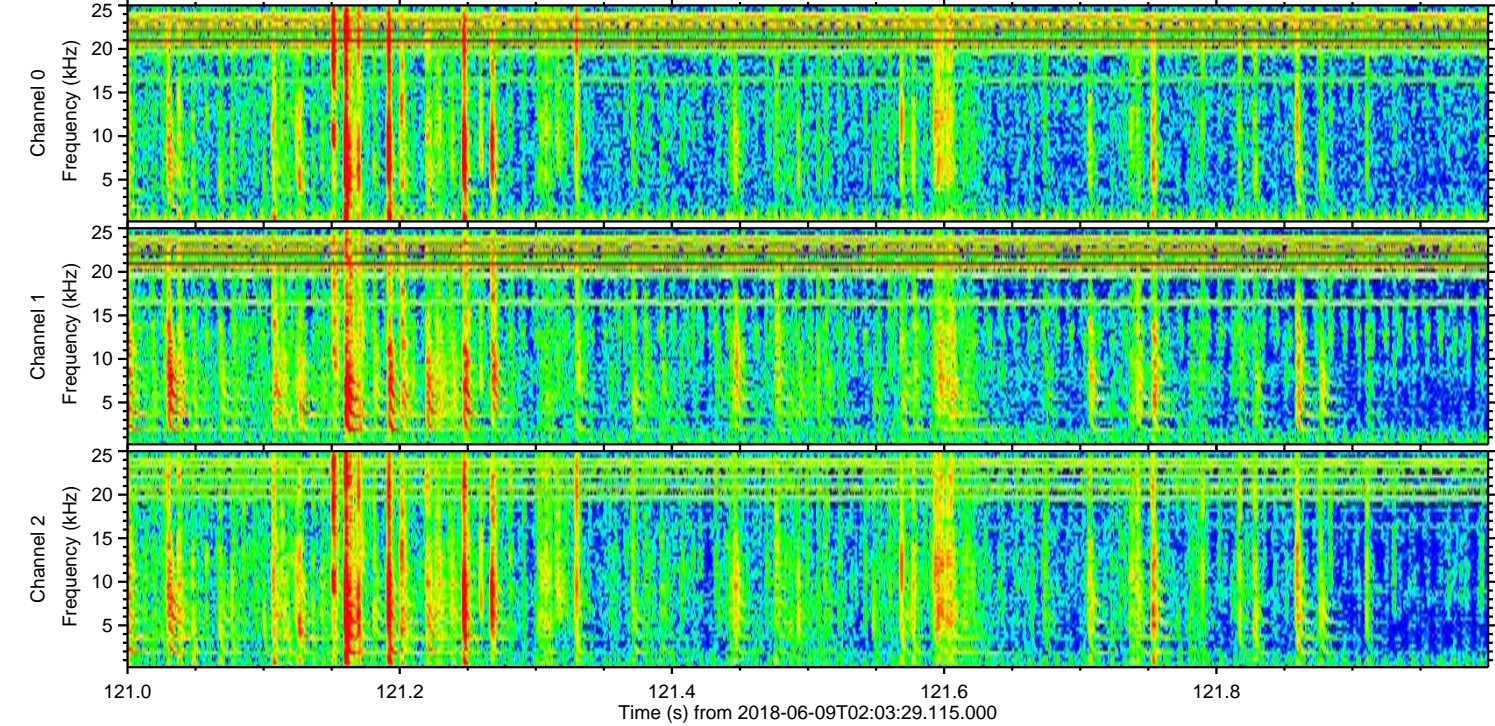
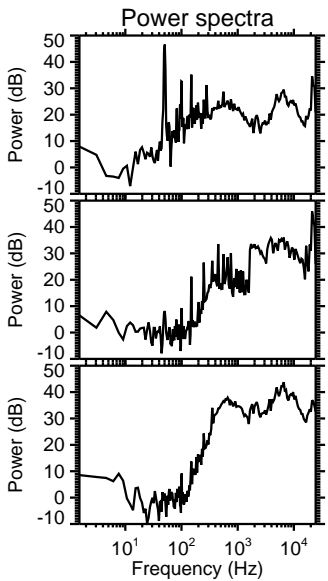
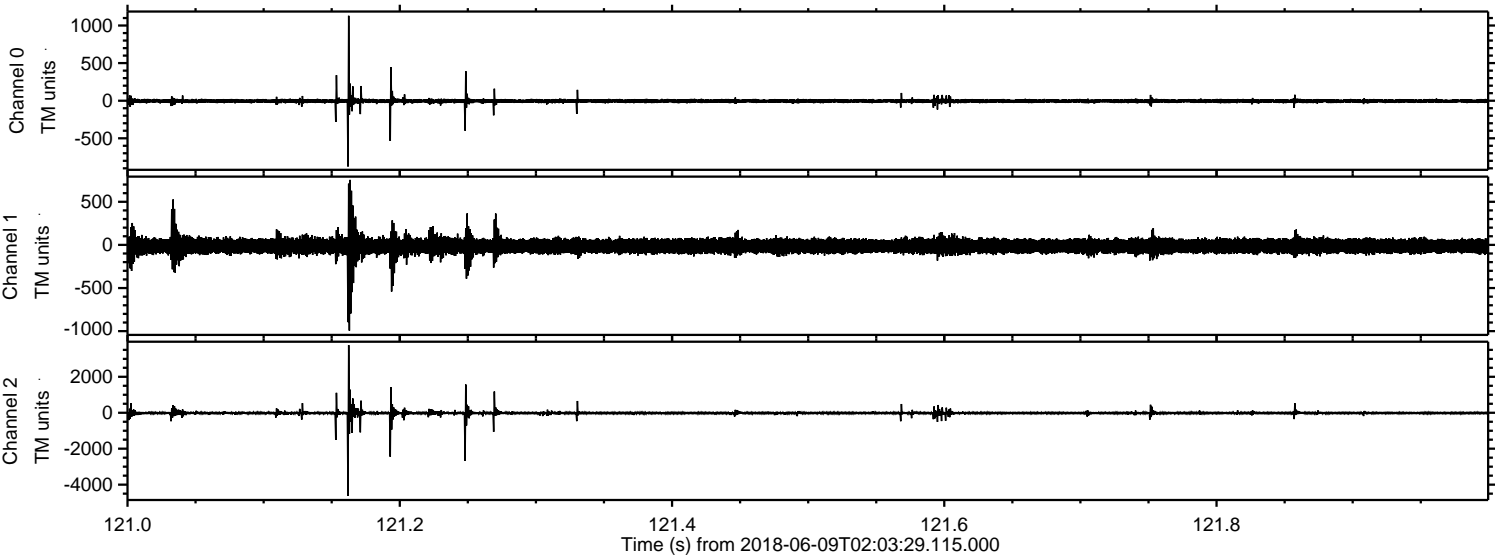
ELMAVAN 3D WAVEFORMS (Measured data sampled at 50 kHz) 51000 packets of 144 samples from 2018-06-09T02:03:29.115.000. Part 27/147

Processed Sat Jun 9 04:11:31 2018 by ELM ver.2012-10-06 from 001__elm20180609_020328__dat00.bin

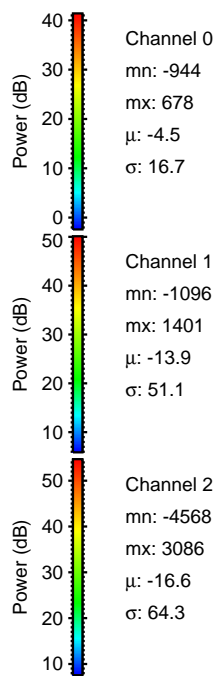
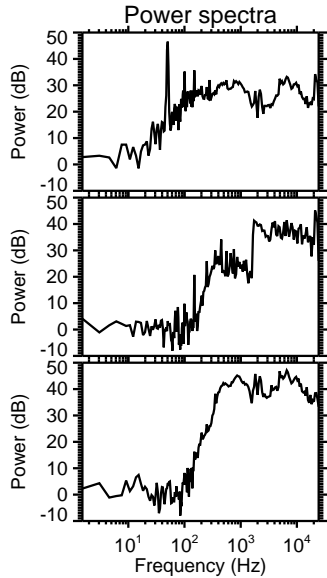
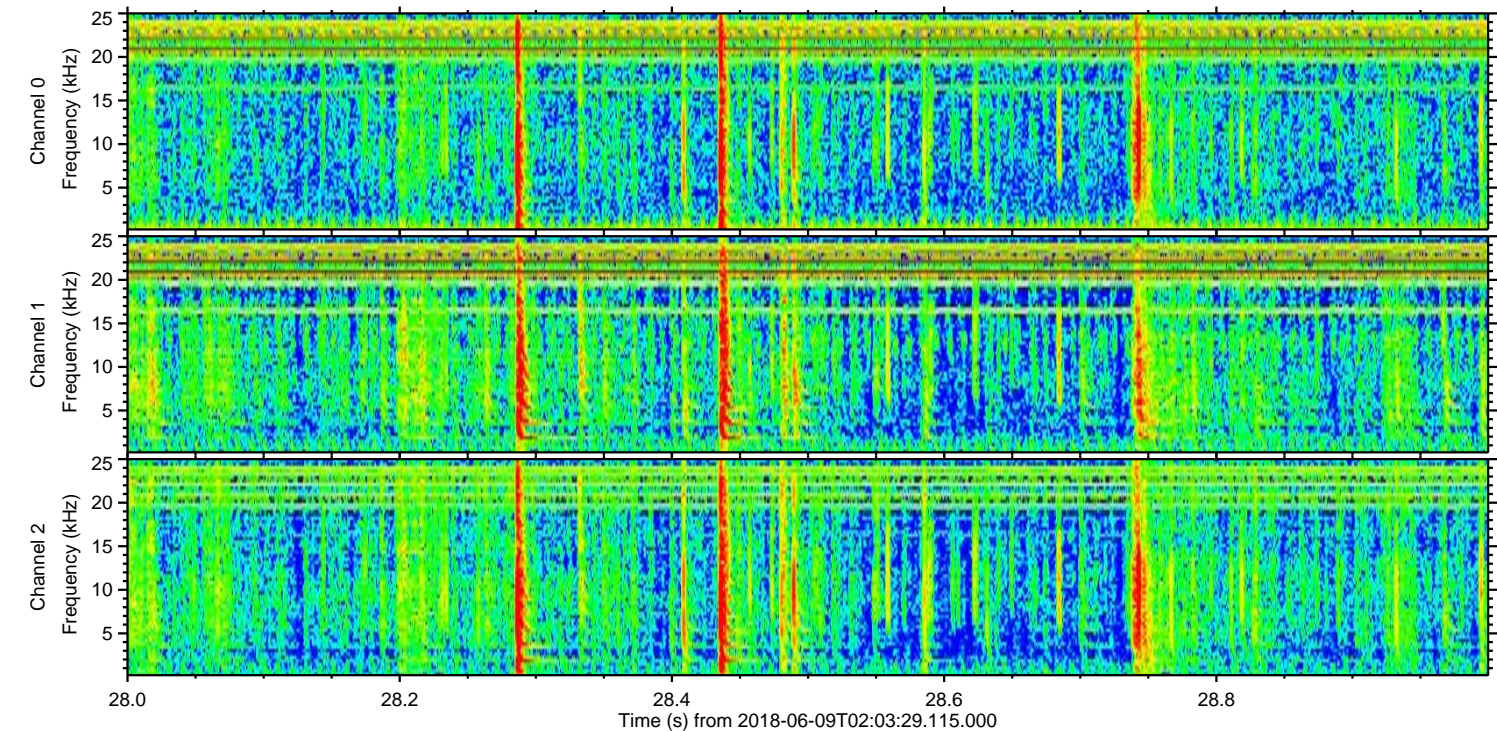
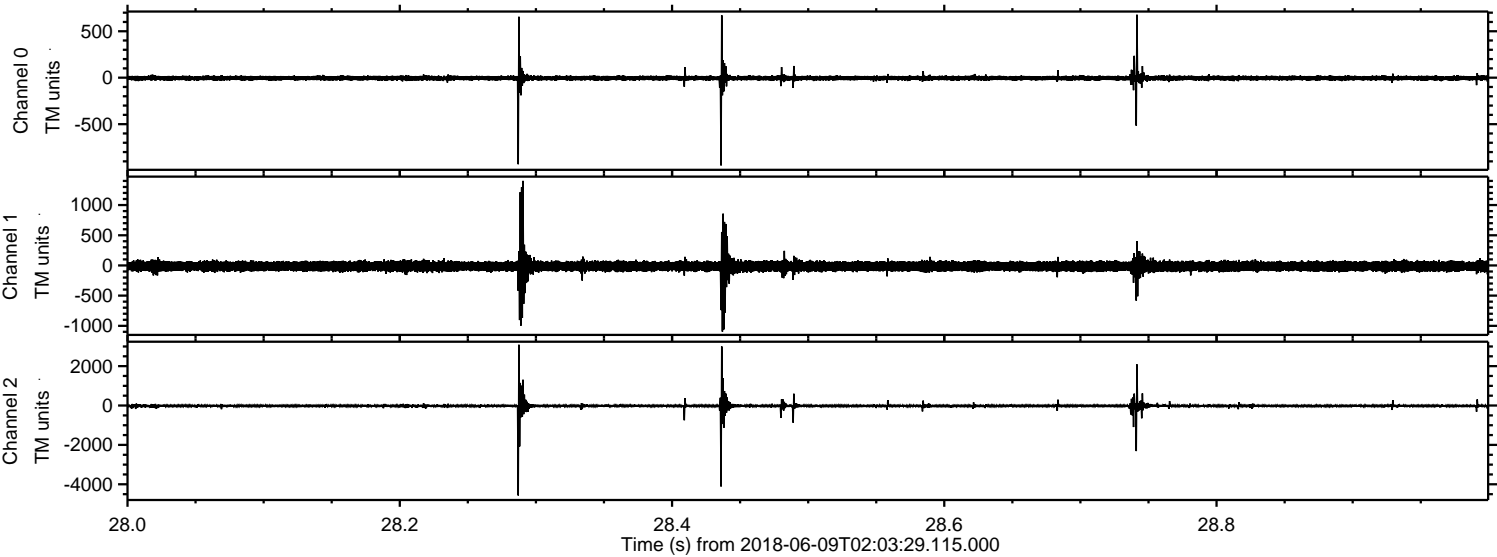


ELMAVAN 3D WAVEFORMS (Measured data sampled at 50 kHz) 51000 packets of 144 samples from 2018-06-09T02:03:29.115.000. Part 122/147

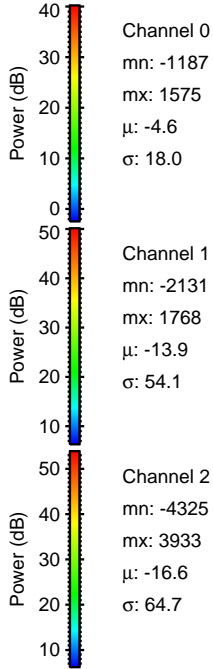
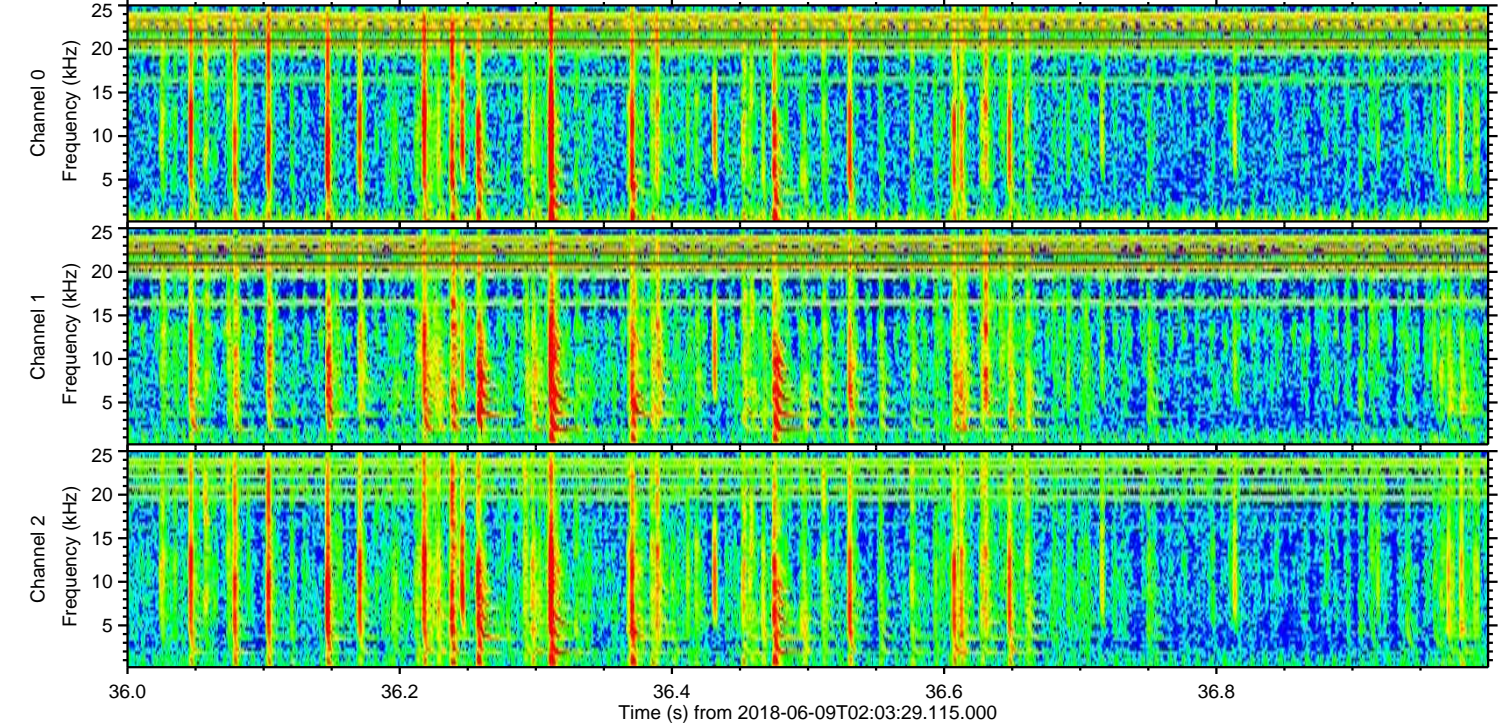
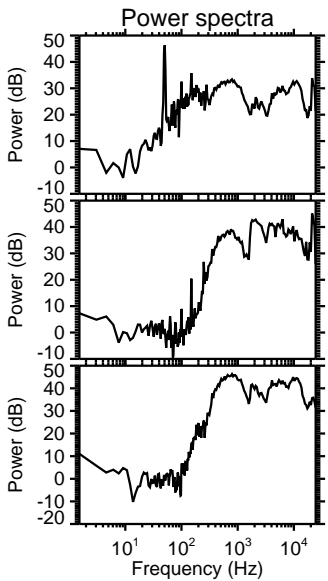
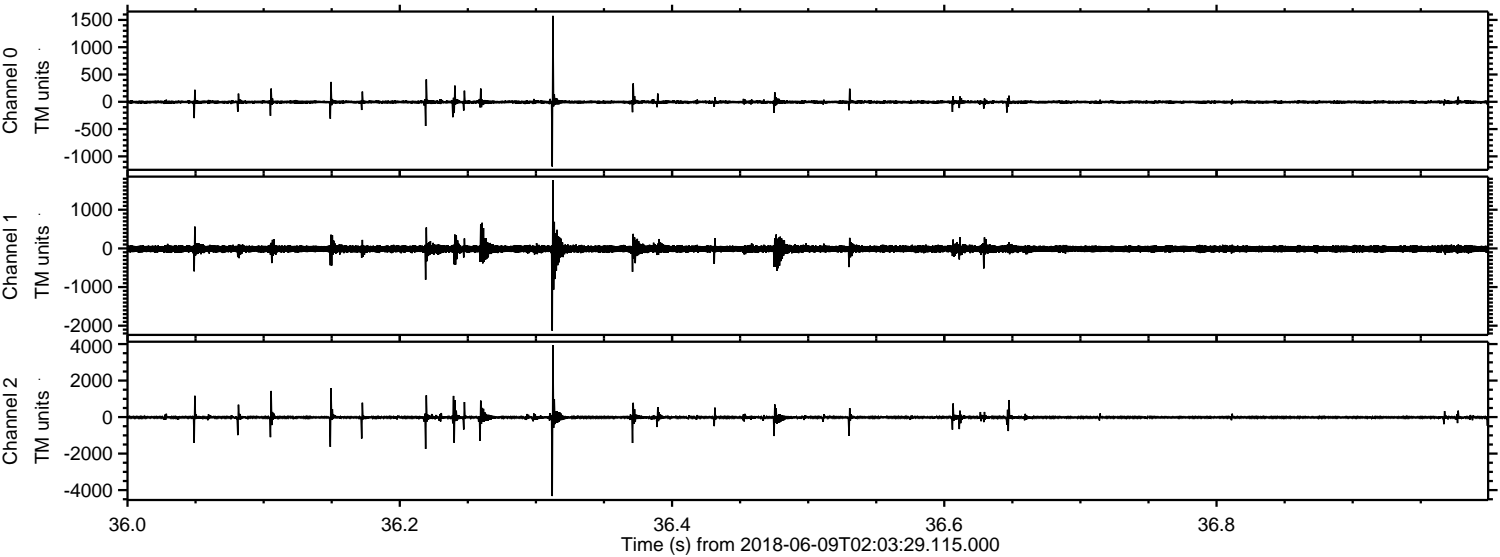
Processed Sat Jun 9 04:11:32 2018 by ELM ver.2012-10-06 from 001__elm20180609_020328__dat00.bin



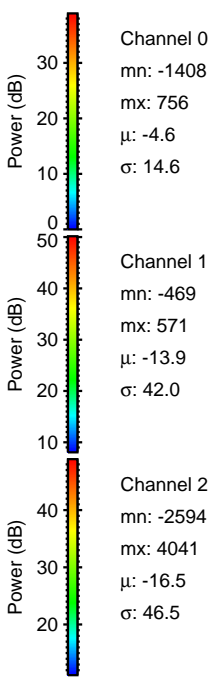
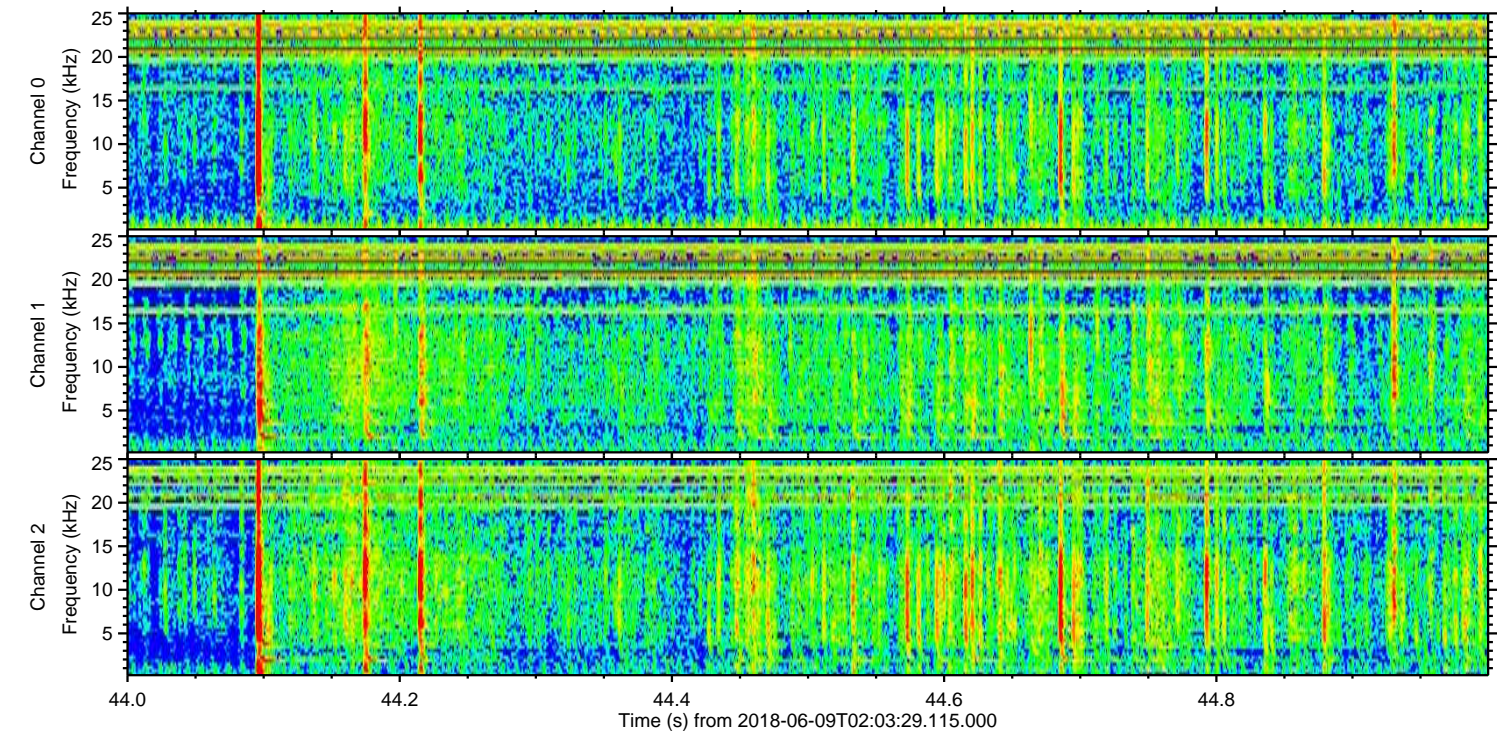
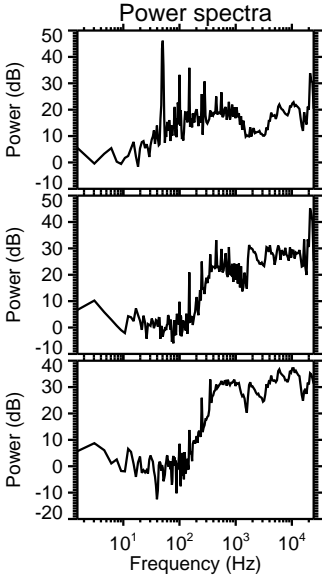
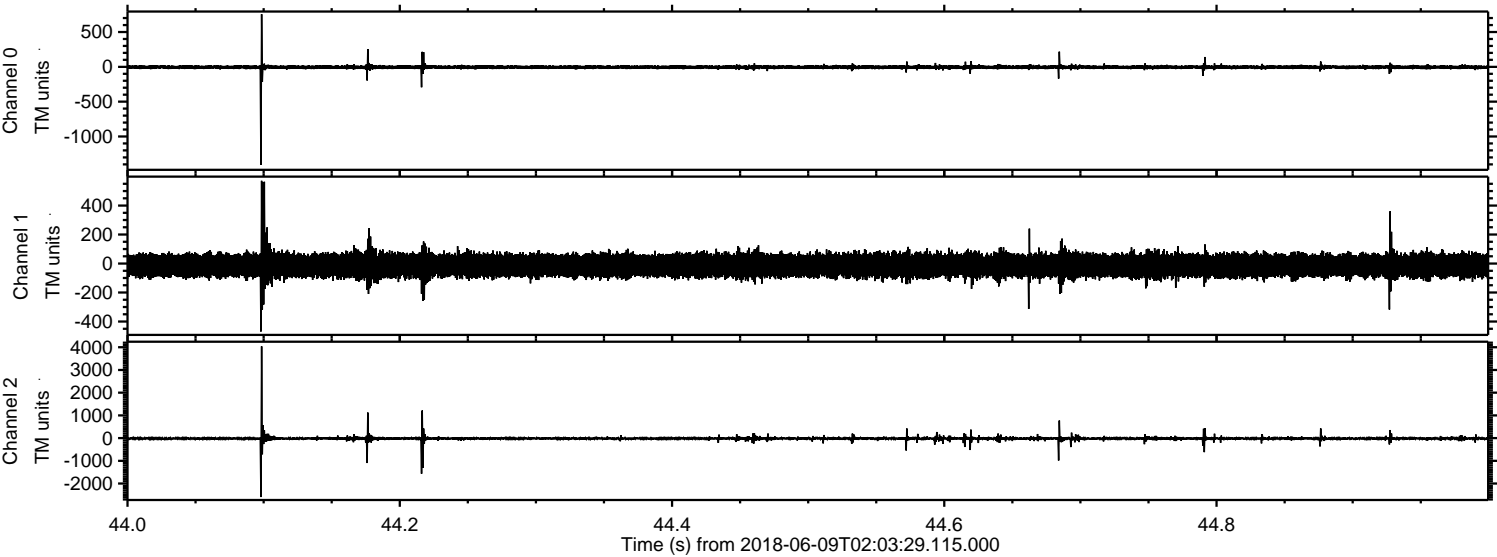
Processed Sat Jun 9 04:11:33 2018 by ELM ver.2012-10-06 from 001__elm20180609_020328__dat00.bin



Processed Sat Jun 9 04:11:33 2018 by ELM ver.2012-10-06 from 001__elm20180609_020328__dat00.bin

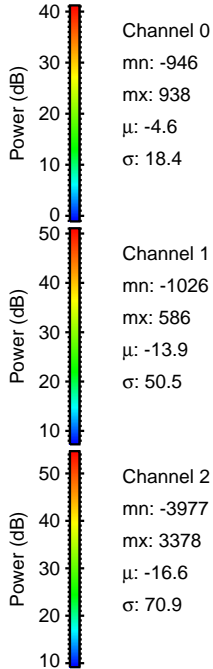
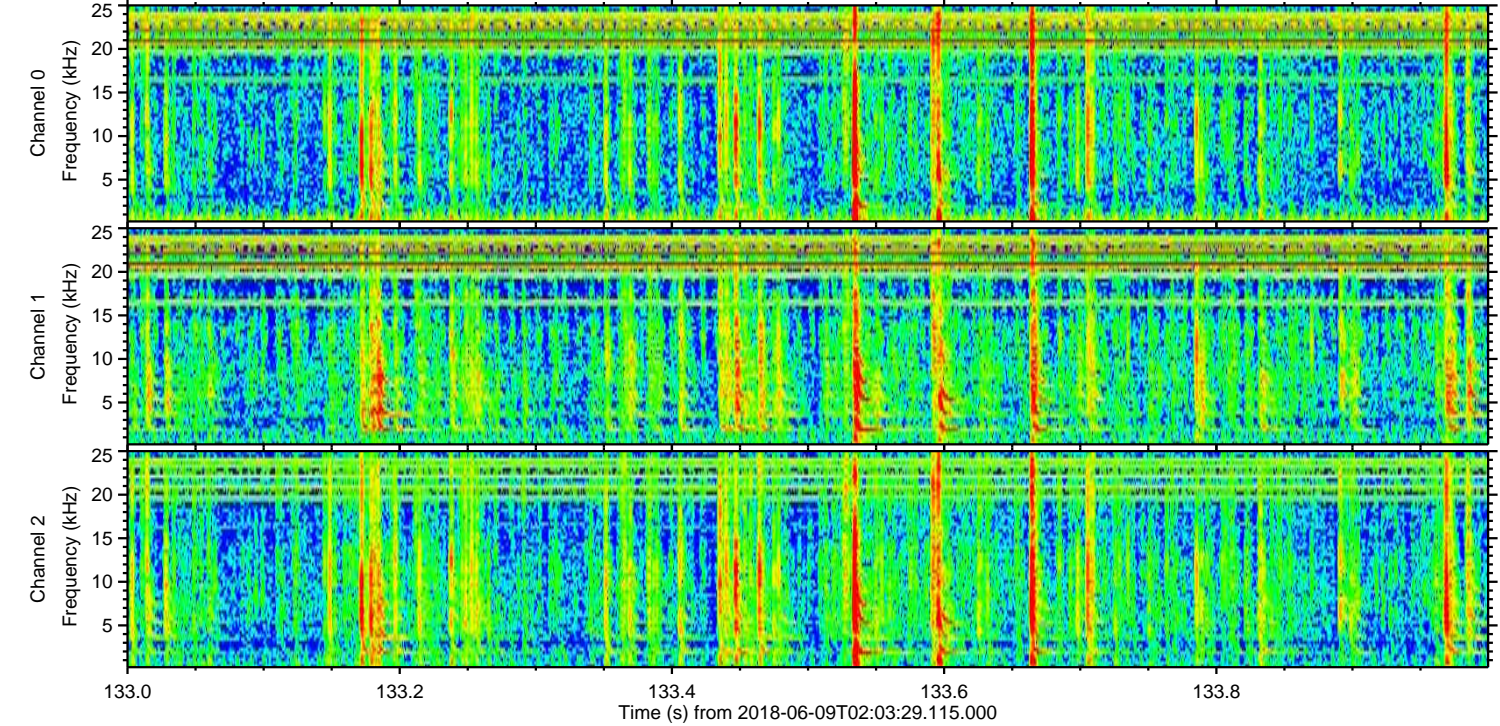
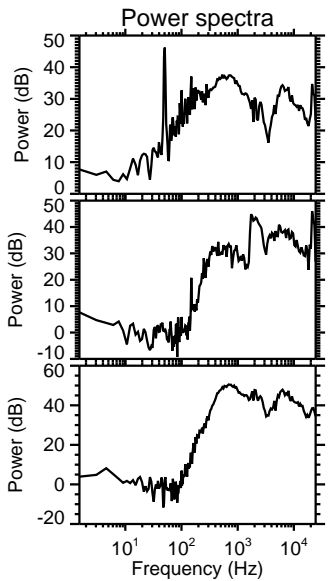
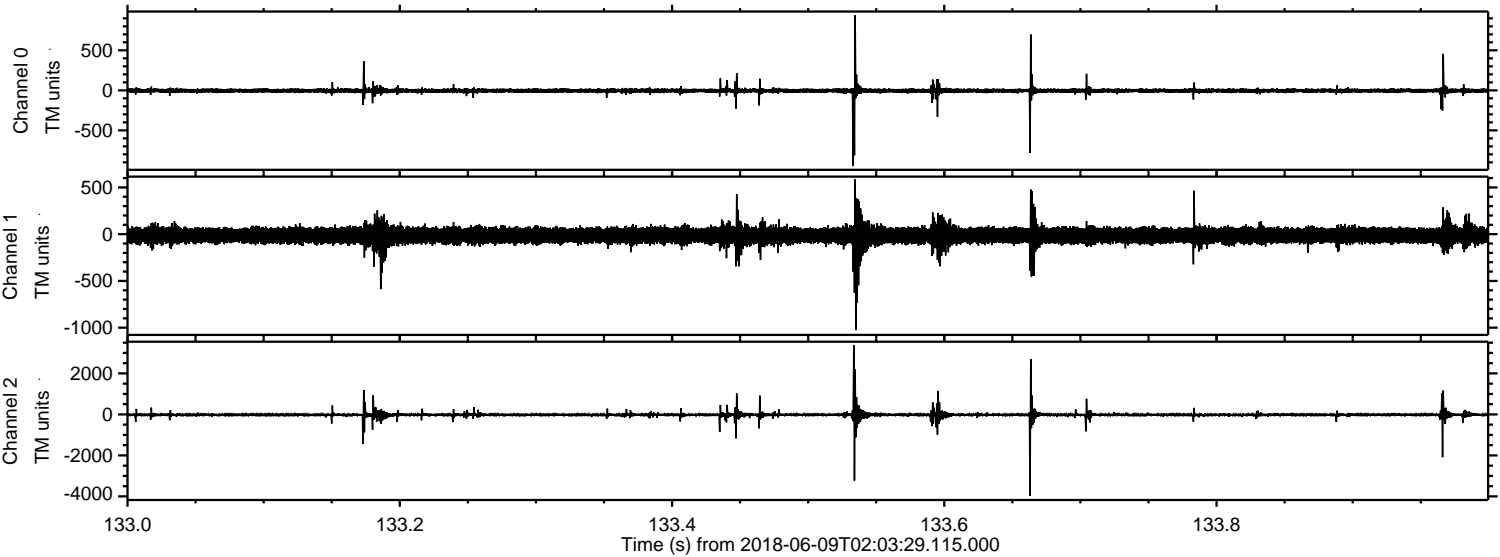


Processed Sat Jun 9 04:11:34 2018 by ELM ver.2012-10-06 from 001__elm20180609_020328__dat00.bin

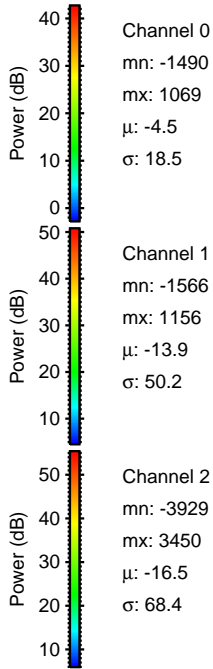
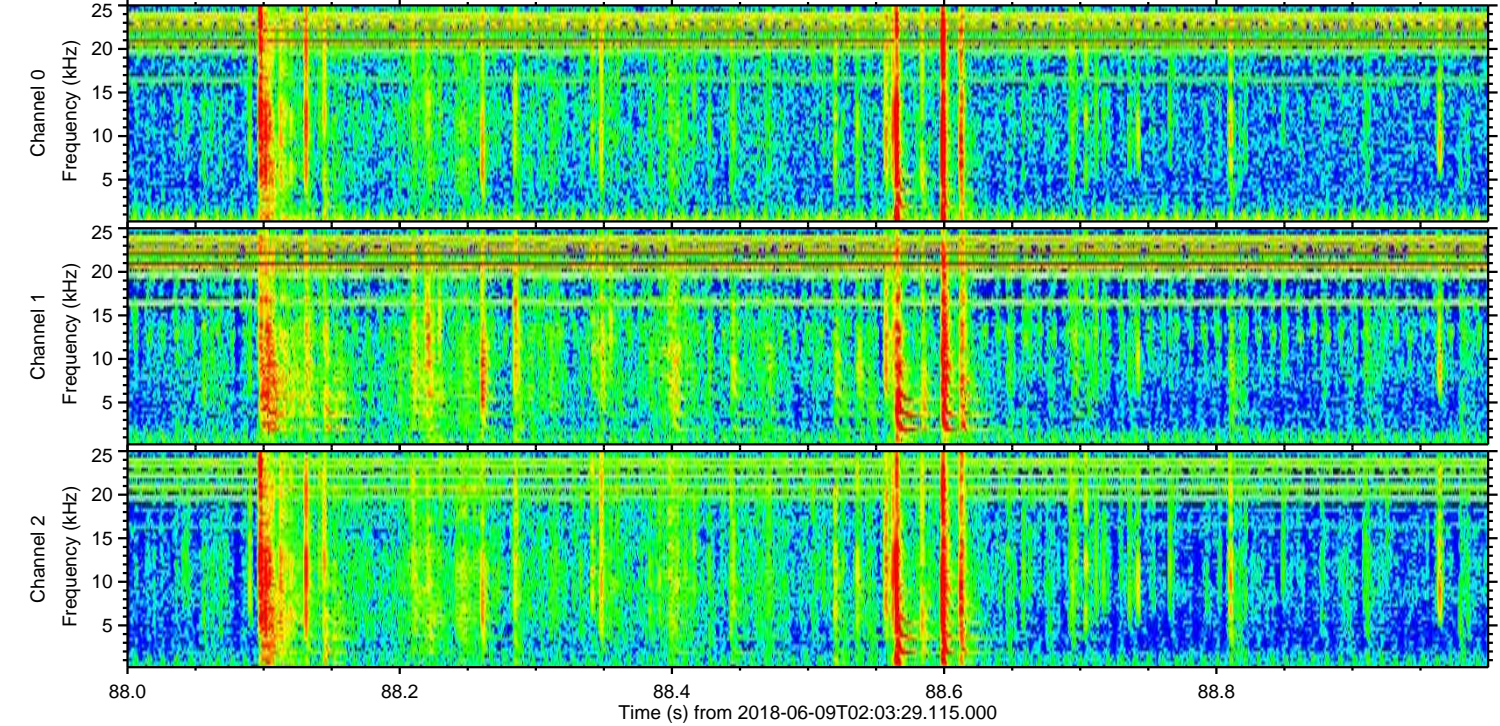
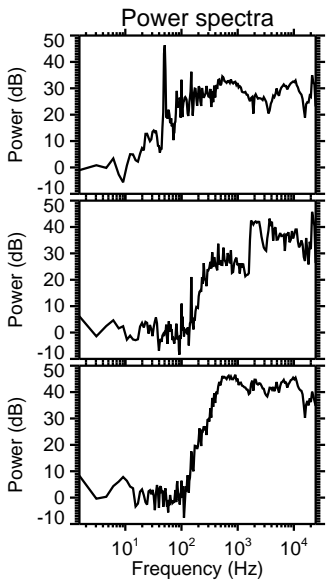
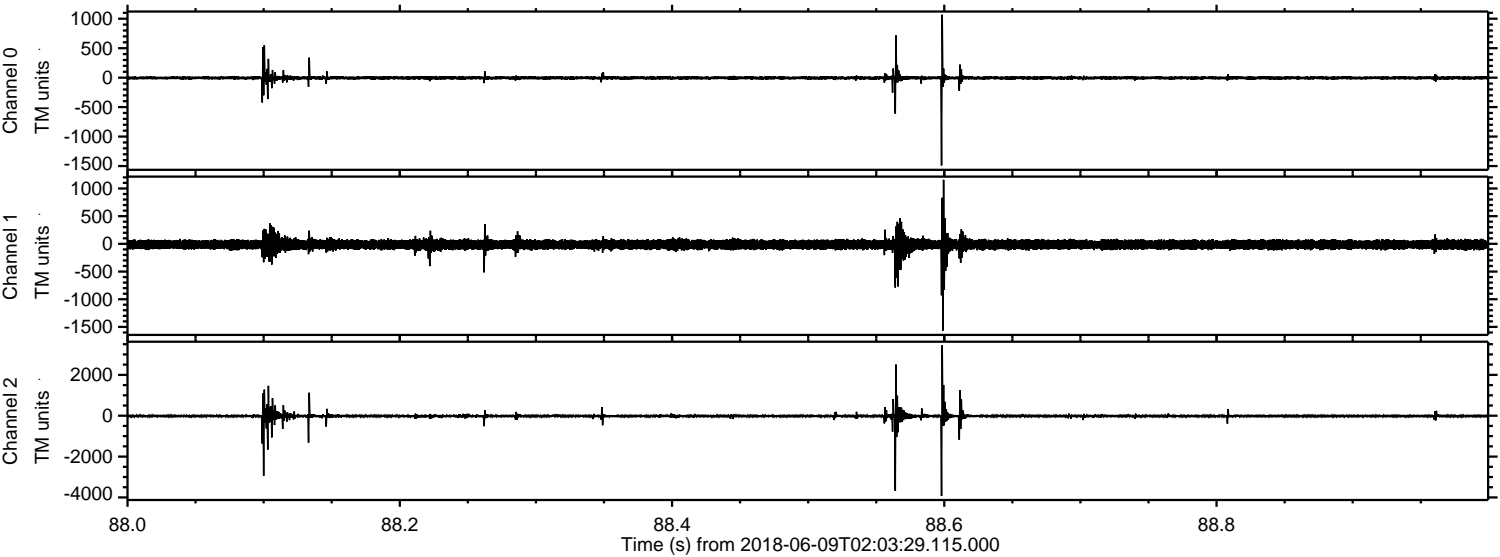


ELMAVAN 3D WAVEFORMS (Measured data sampled at 50 kHz) 51000 packets of 144 samples from 2018-06-09T02:03:29.115.000. Part 134/147

Processed Sat Jun 9 04:11:35 2018 by ELM ver.2012-10-06 from 001__elm20180609_020328__dat00.bin



Processed Sat Jun 9 04:11:35 2018 by ELM ver.2012-10-06 from 001__elm20180609_020328__dat00.bin

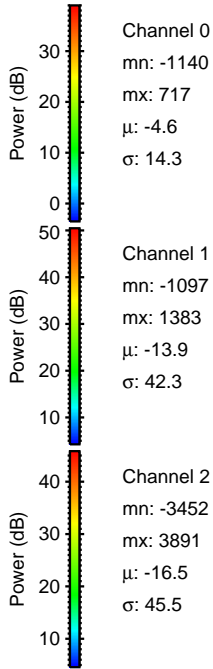
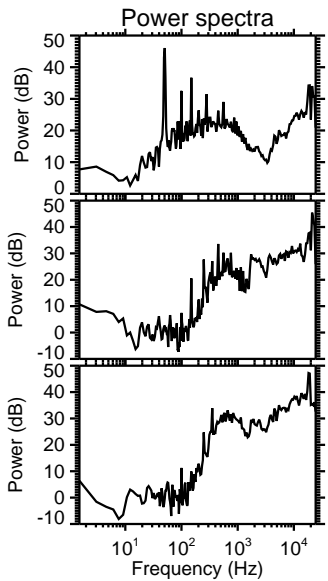
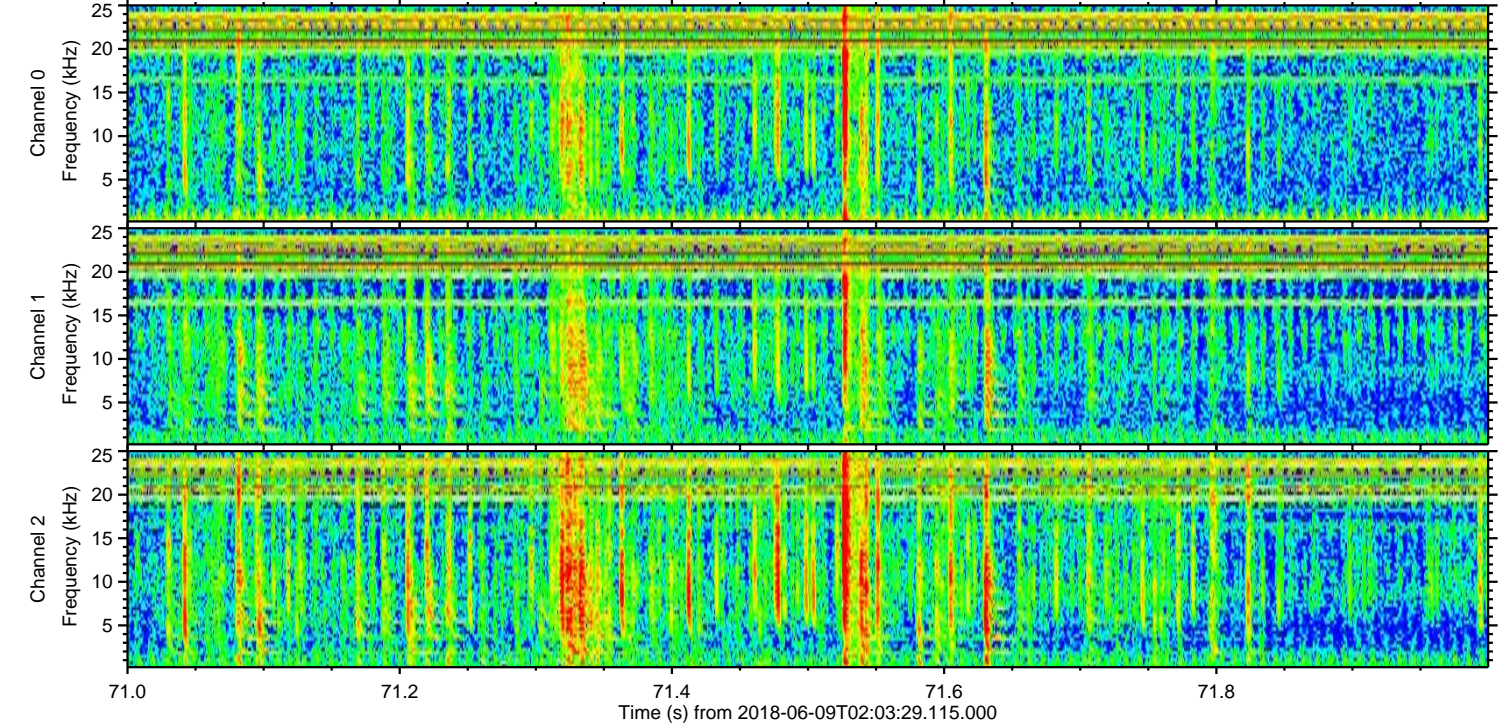
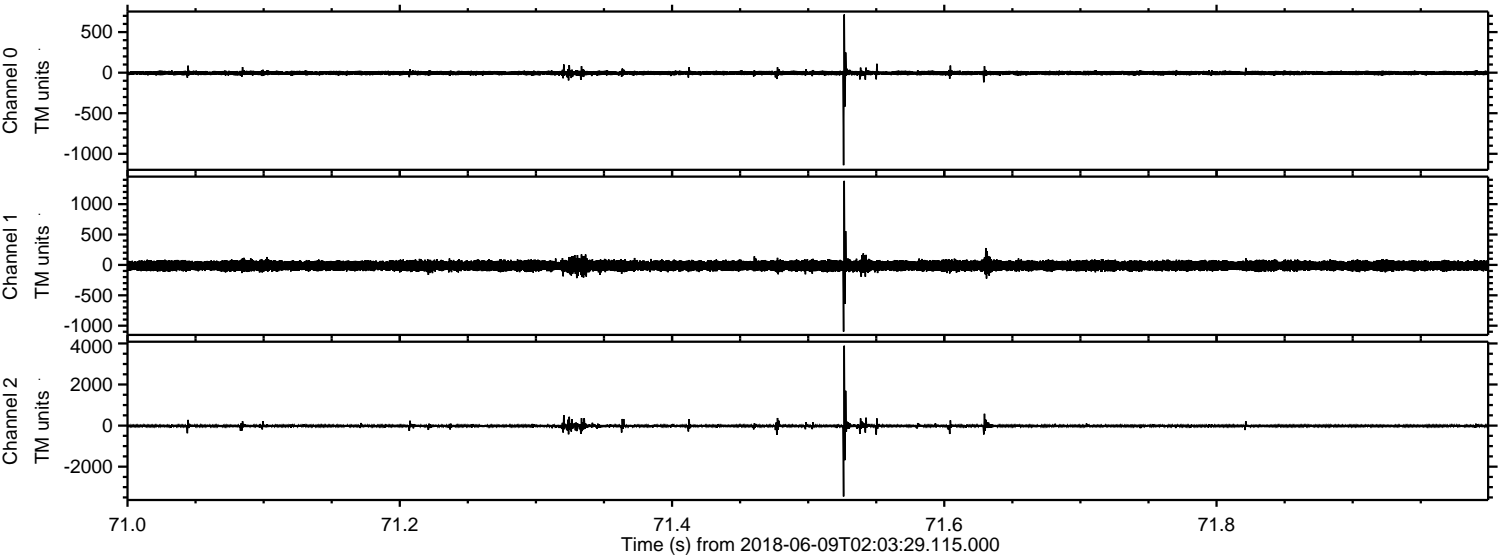


Channel 0
mn: -1490
mx: 1069
 μ : -4.5
 σ : 18.5

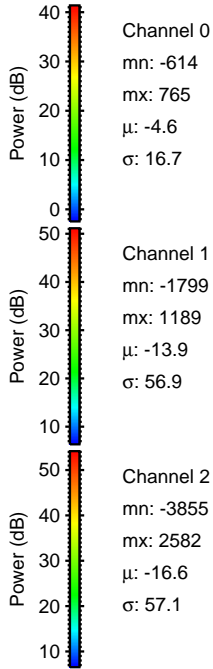
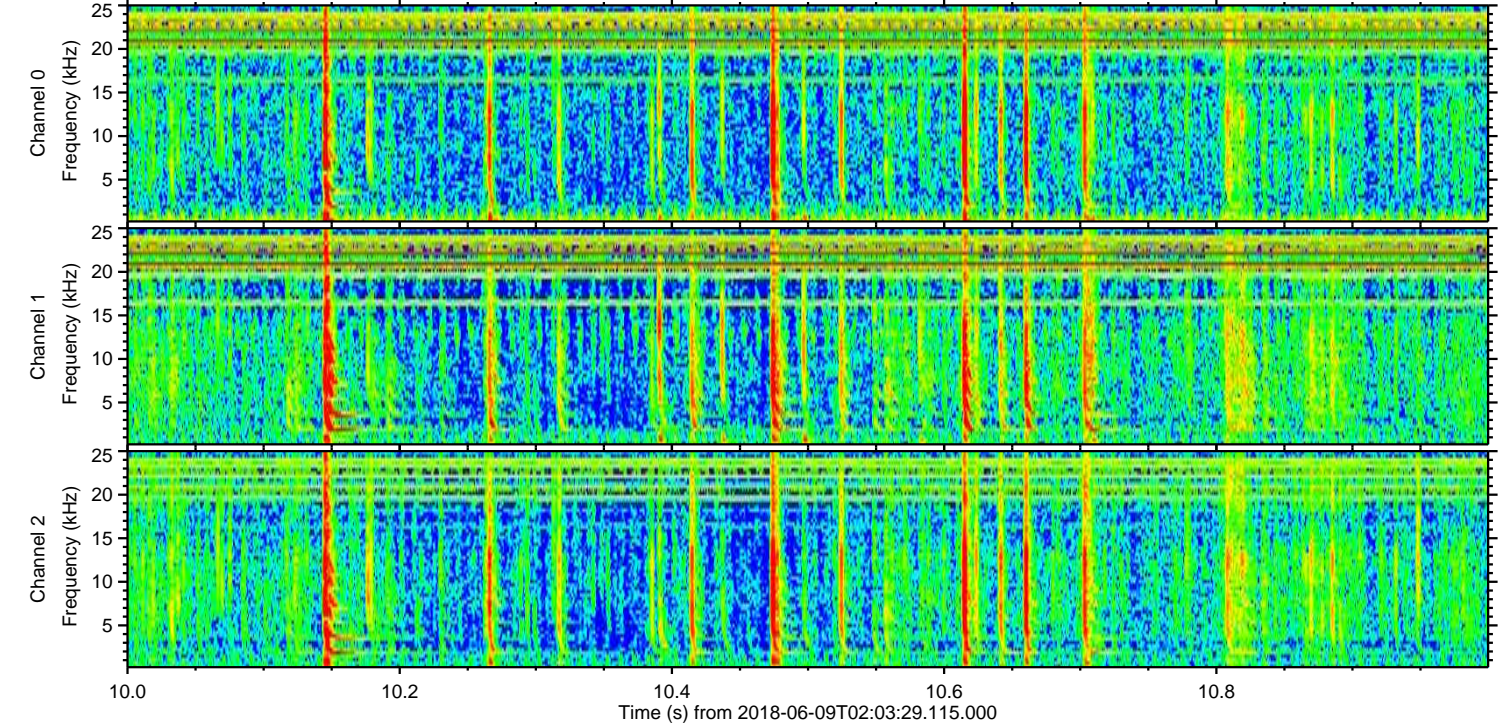
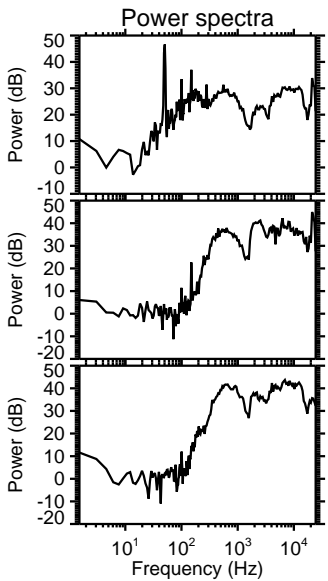
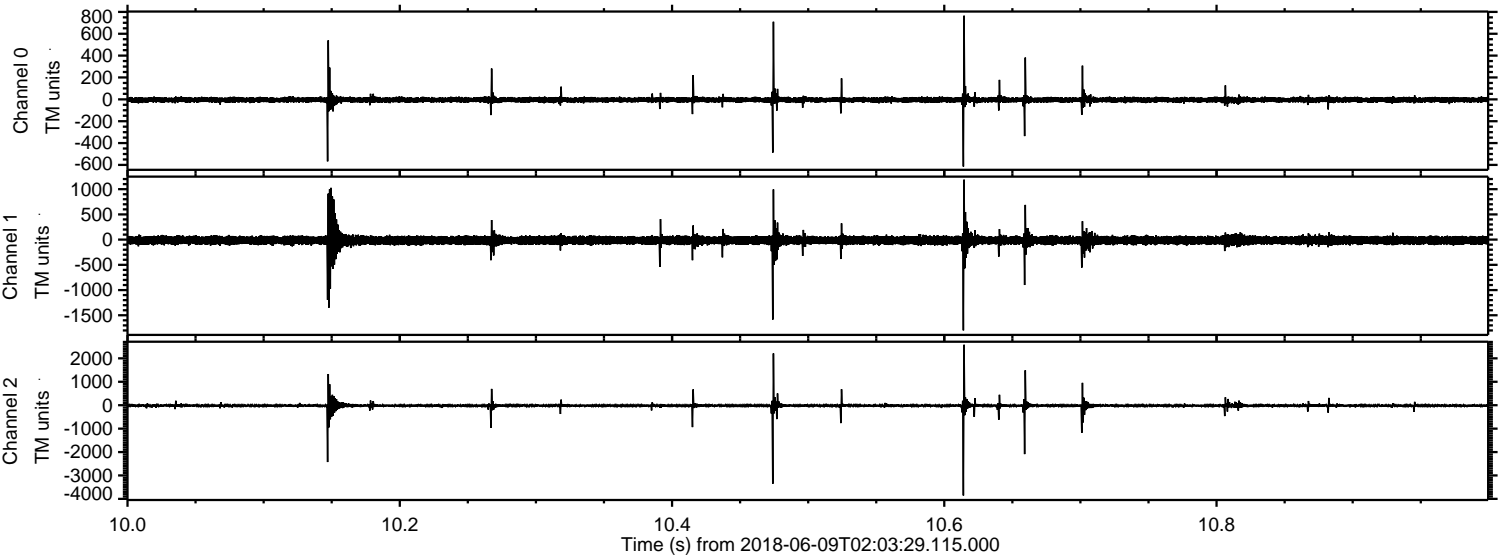
Channel 1
mn: -1566
mx: 1156
 μ : -13.9
 σ : 50.2

Channel 2
mn: -3929
mx: 3450
 μ : -16.5
 σ : 68.4

Processed Sat Jun 9 04:11:36 2018 by ELM ver.2012-10-06 from 001__elm20180609_020328__dat00.bin



Processed Sat Jun 9 04:11:36 2018 by ELM ver.2012-10-06 from 001__elm20180609_020328__dat00.bin



Processed Sat Jun 9 04:11:37 2018 by ELM ver.2012-10-06 from 001__elm20180609_020328__dat00.bin

