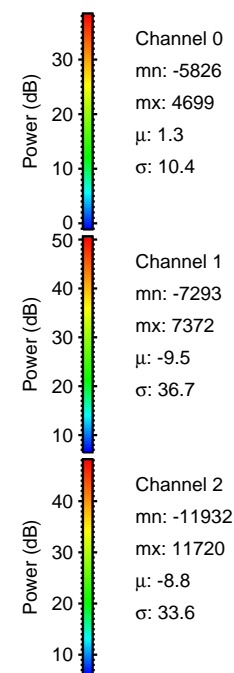
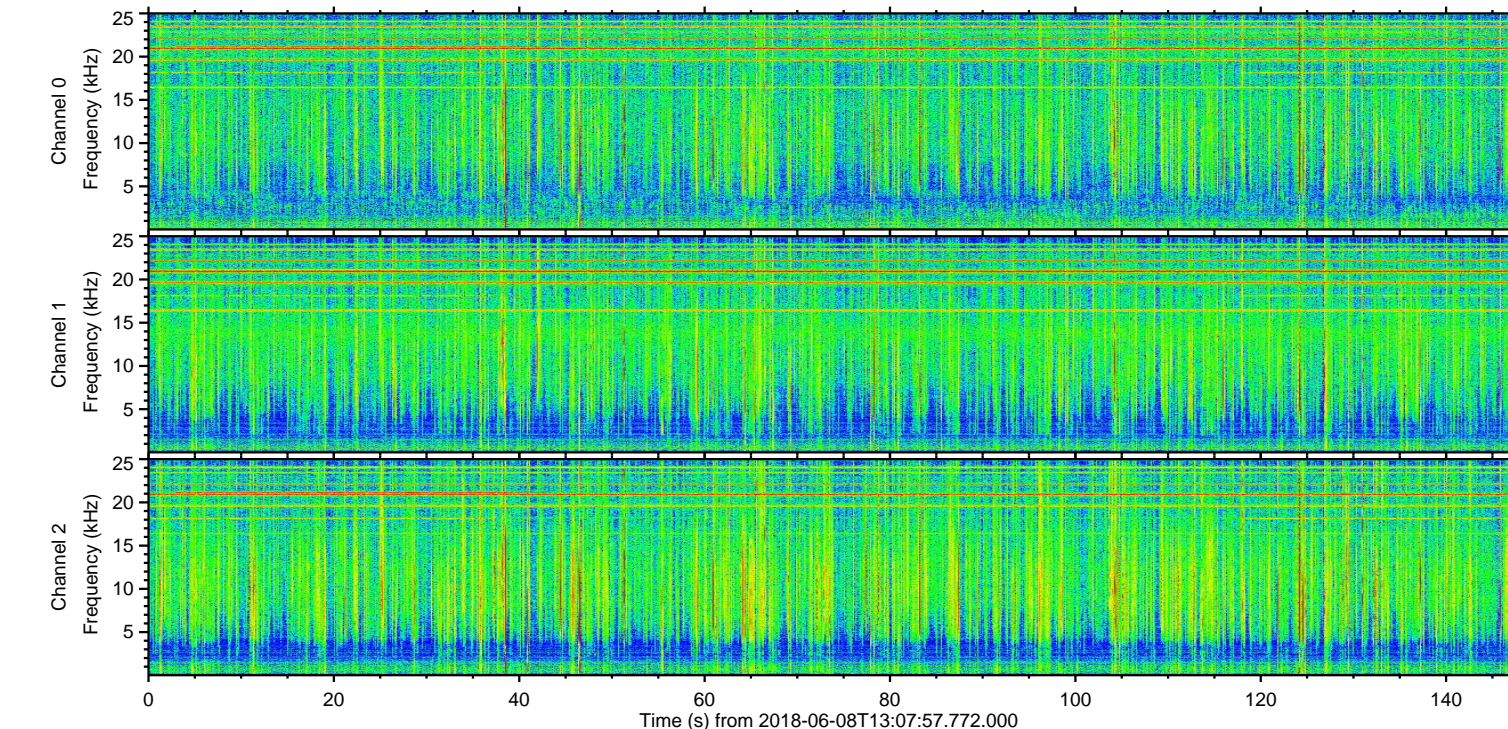
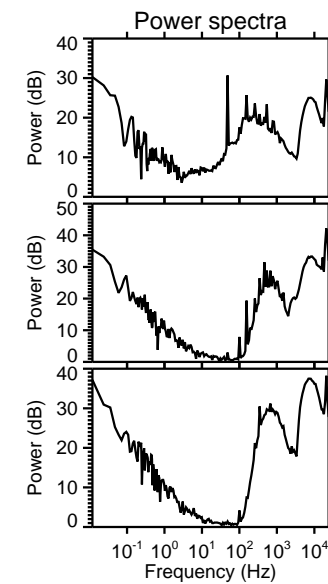
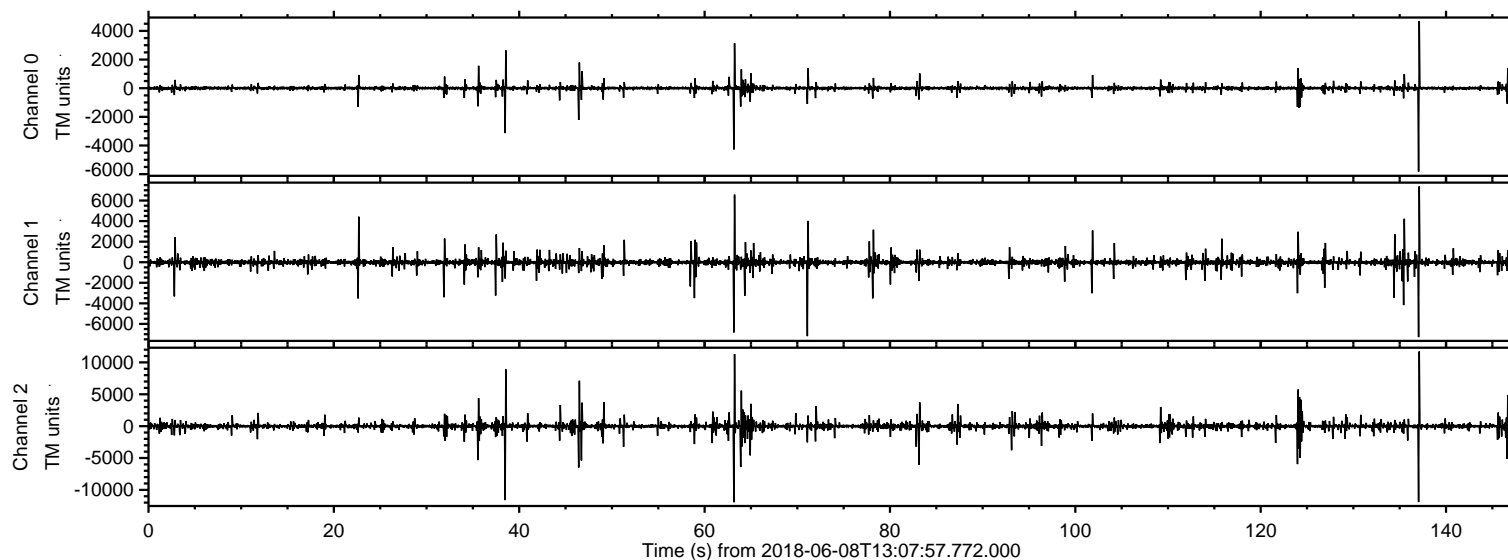
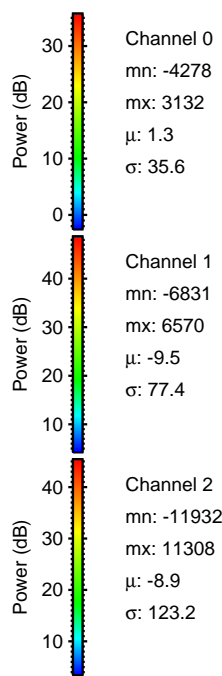
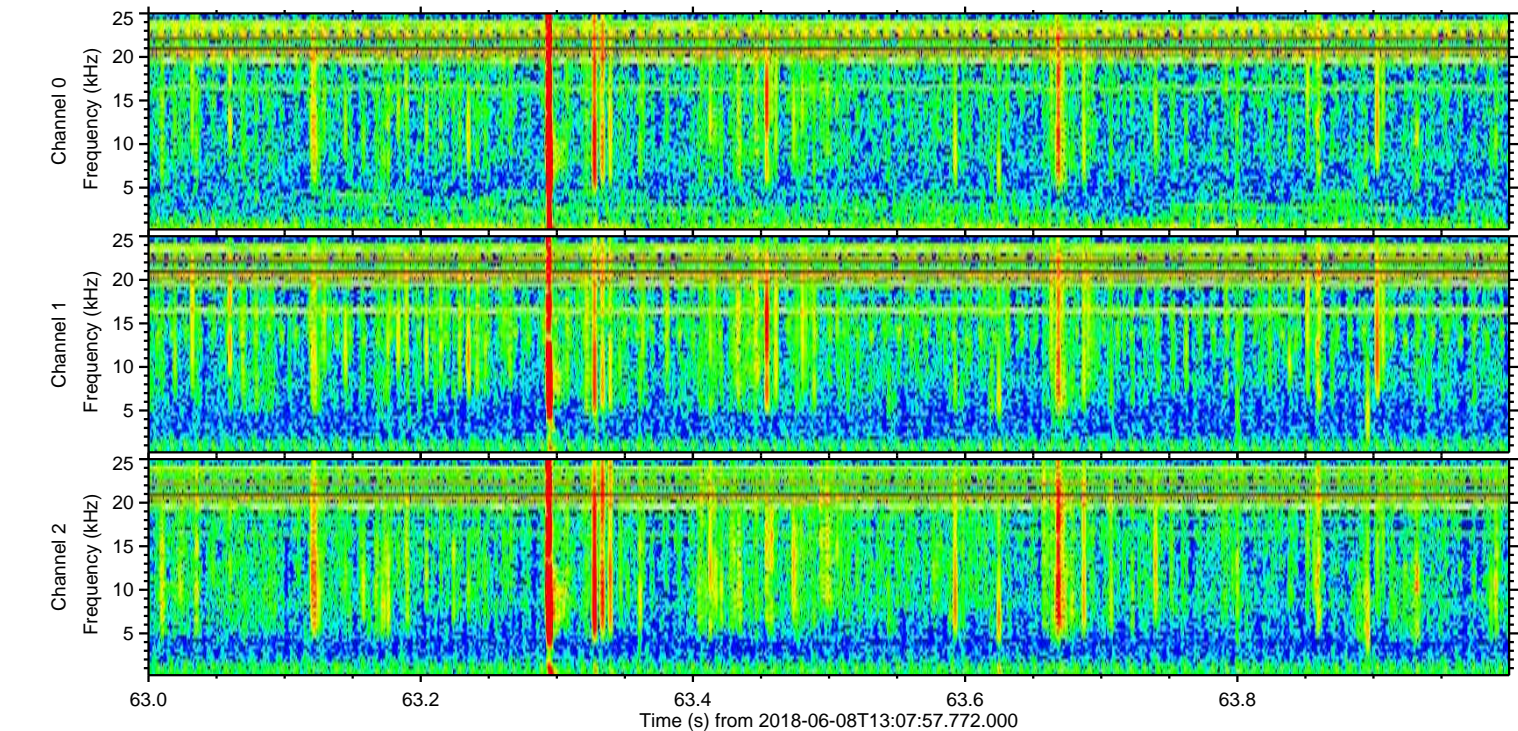
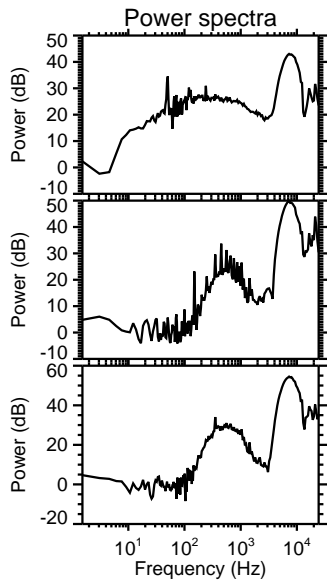
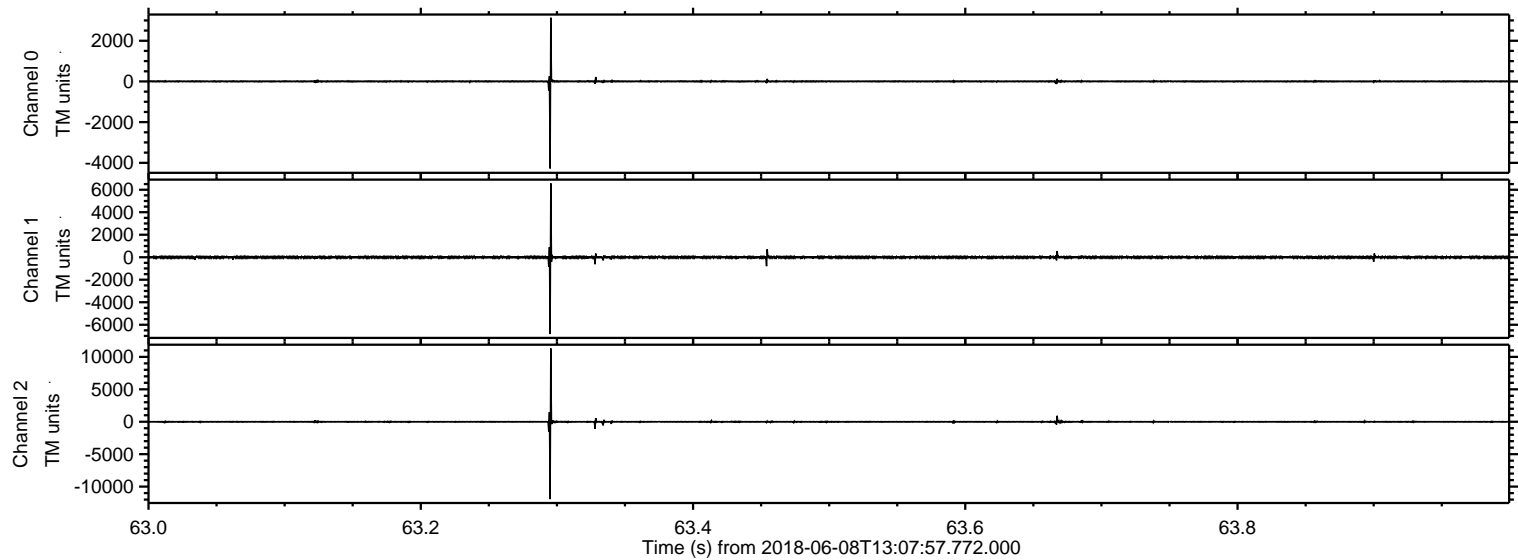


ELMAVAN 3D WAVEFORMS (Measured data sampled at 50 kHz) 51000 packets of 144 samples from 2018-06-08T13:07:57.772.000.

Processed Fri Jun 8 15:16:12 2018 by ELM ver.2012-10-06 from 001__elm20180608_130756__dat00.bin

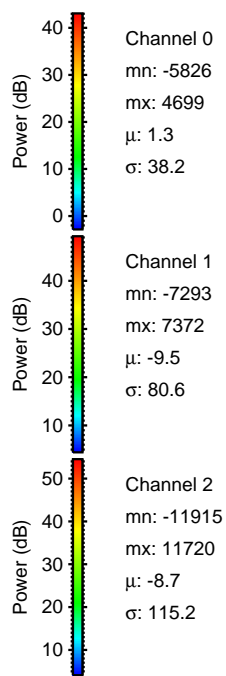
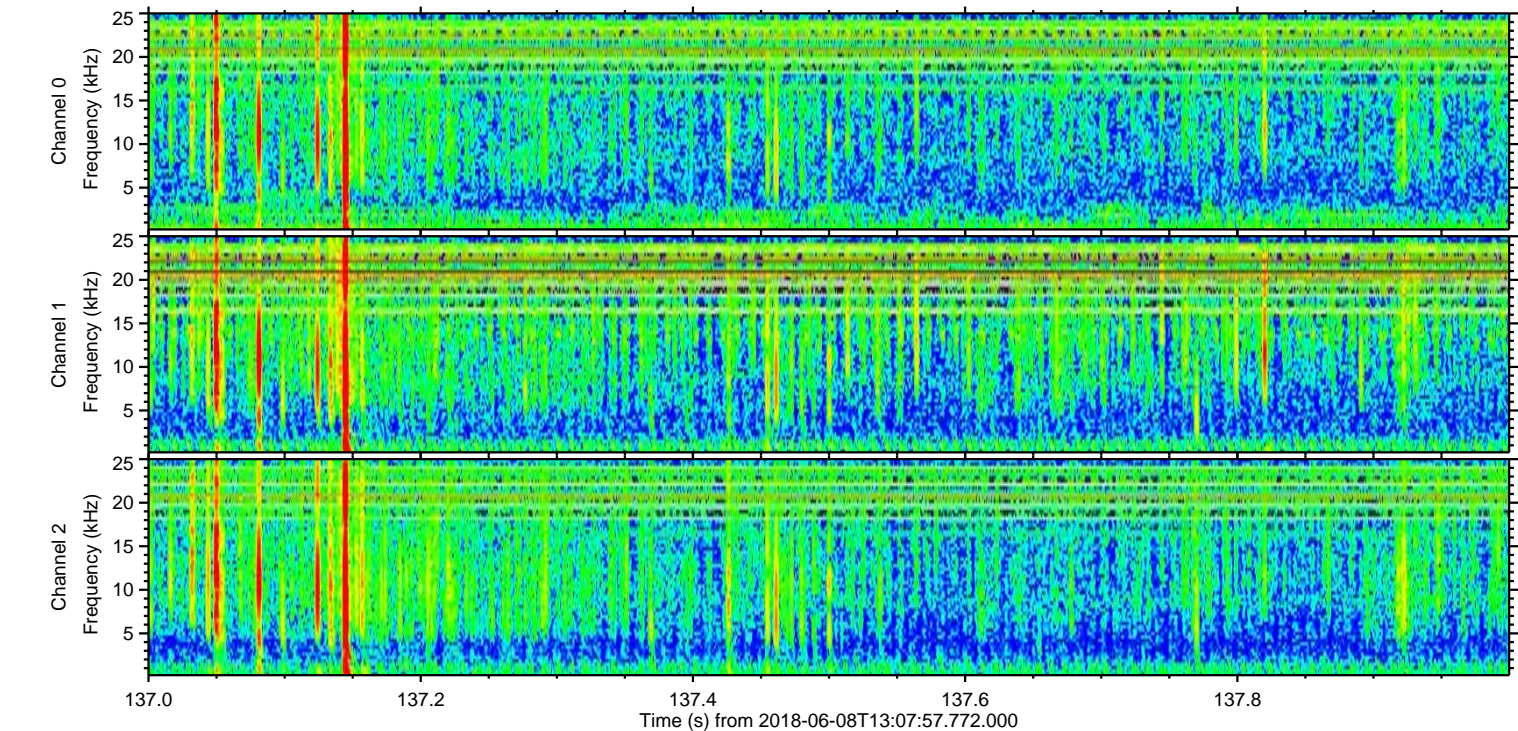
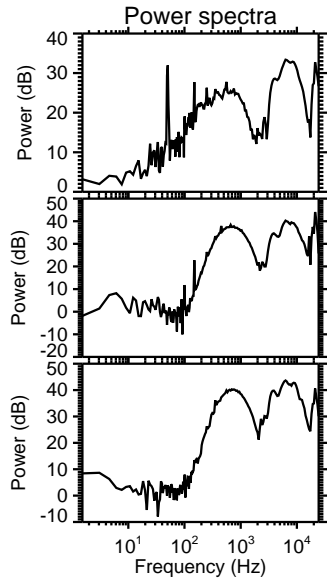
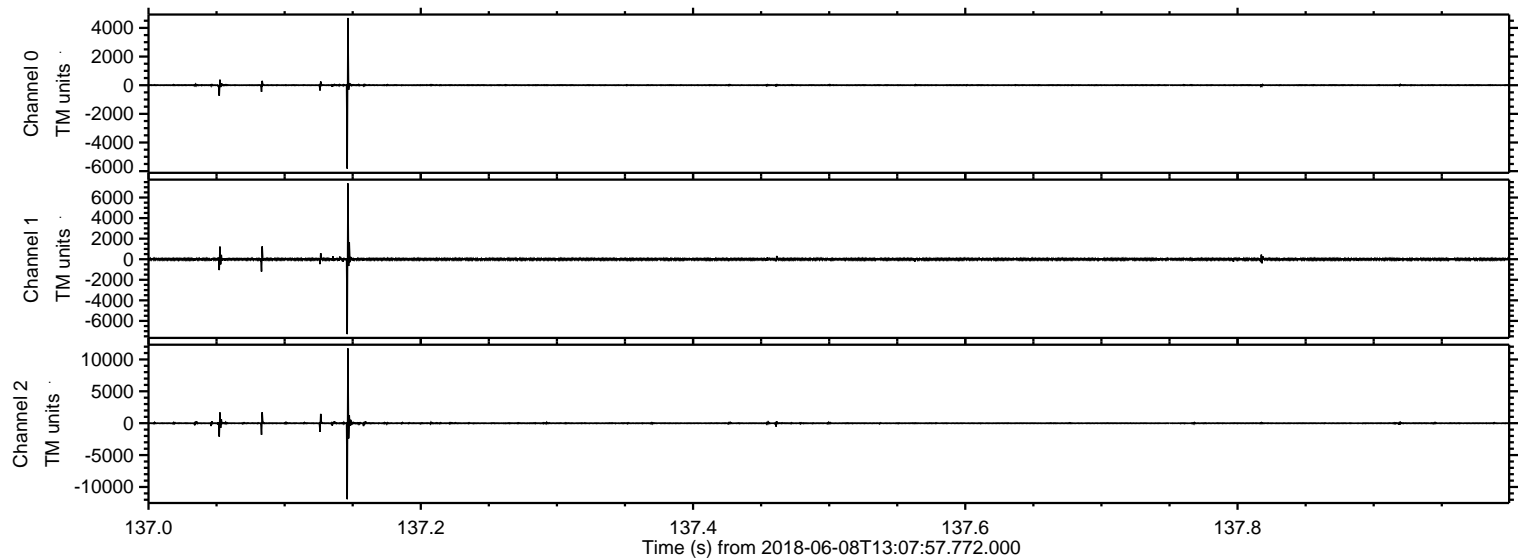


Processed Fri Jun 8 15:16:18 2018 by ELM ver.2012-10-06 from 001__elm20180608_130756__dat00.bin

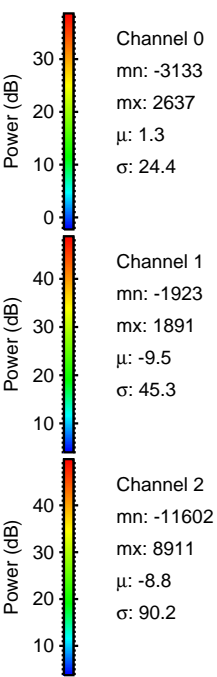
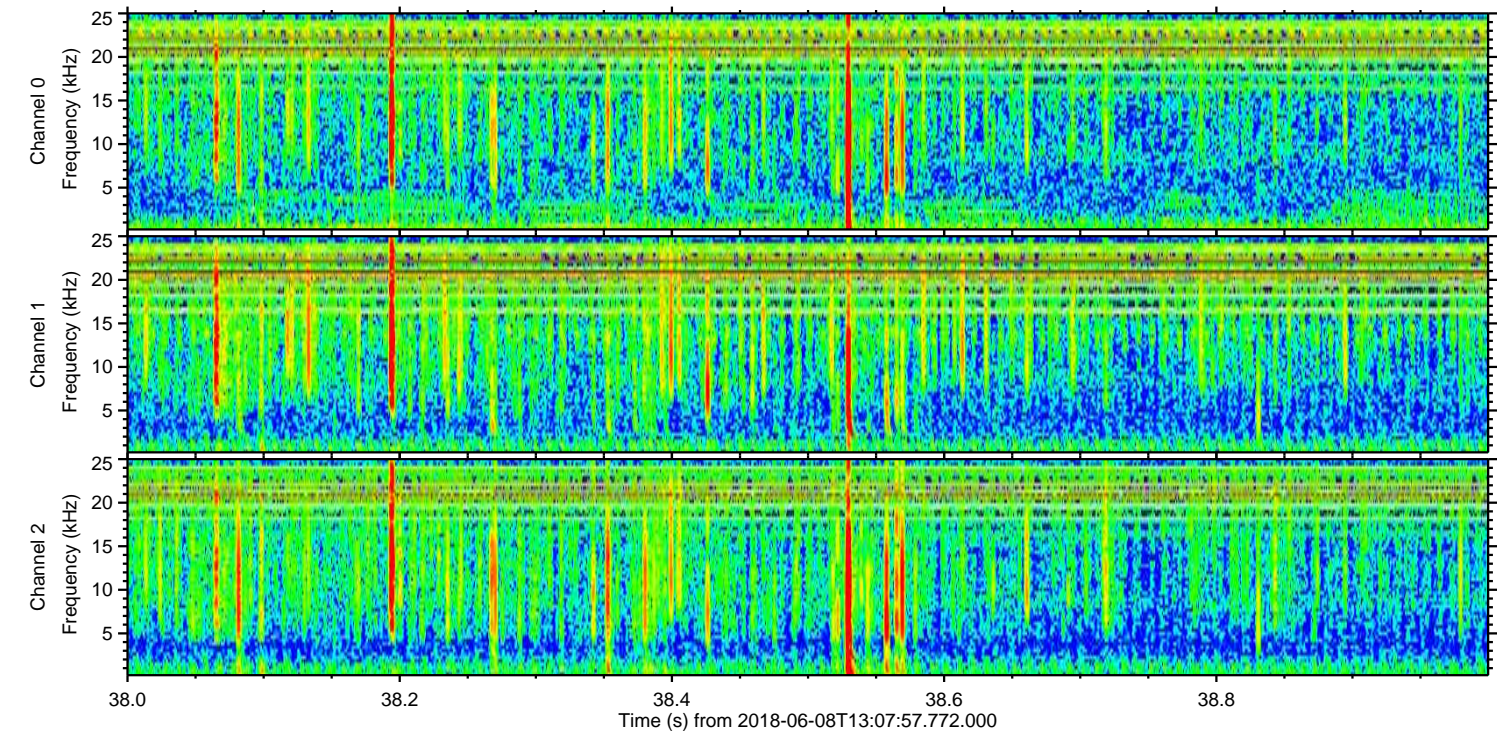
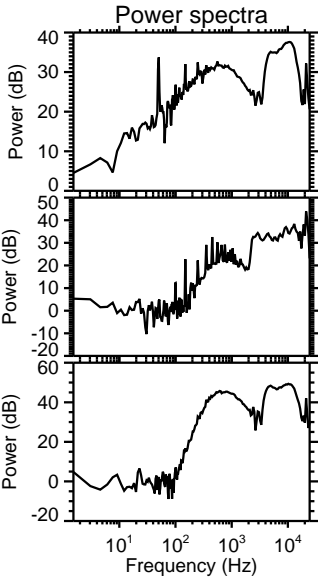
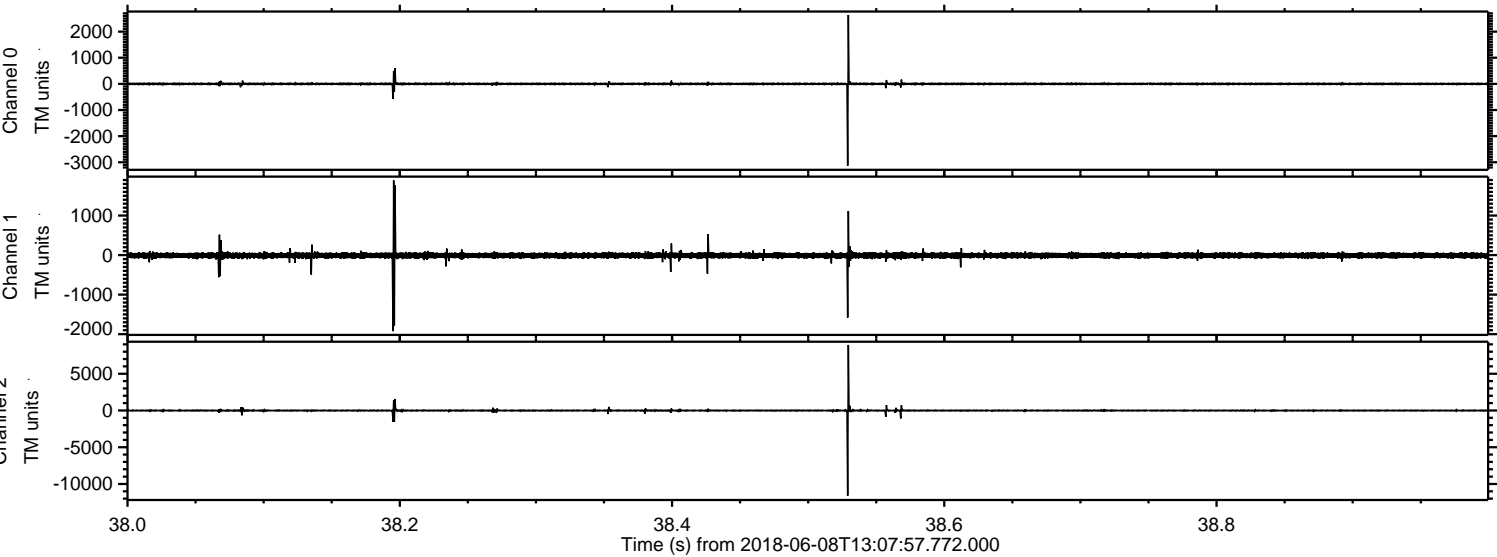


ELMAVAN 3D WAVEFORMS (Measured data sampled at 50 kHz) 51000 packets of 144 samples from 2018-06-08T13:07:57.772.000. Part 138/147

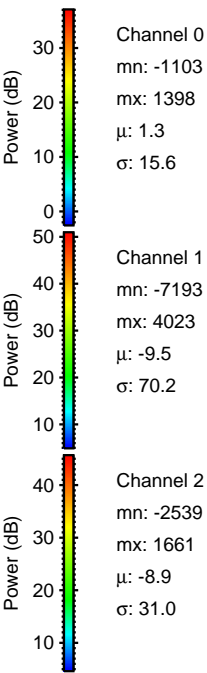
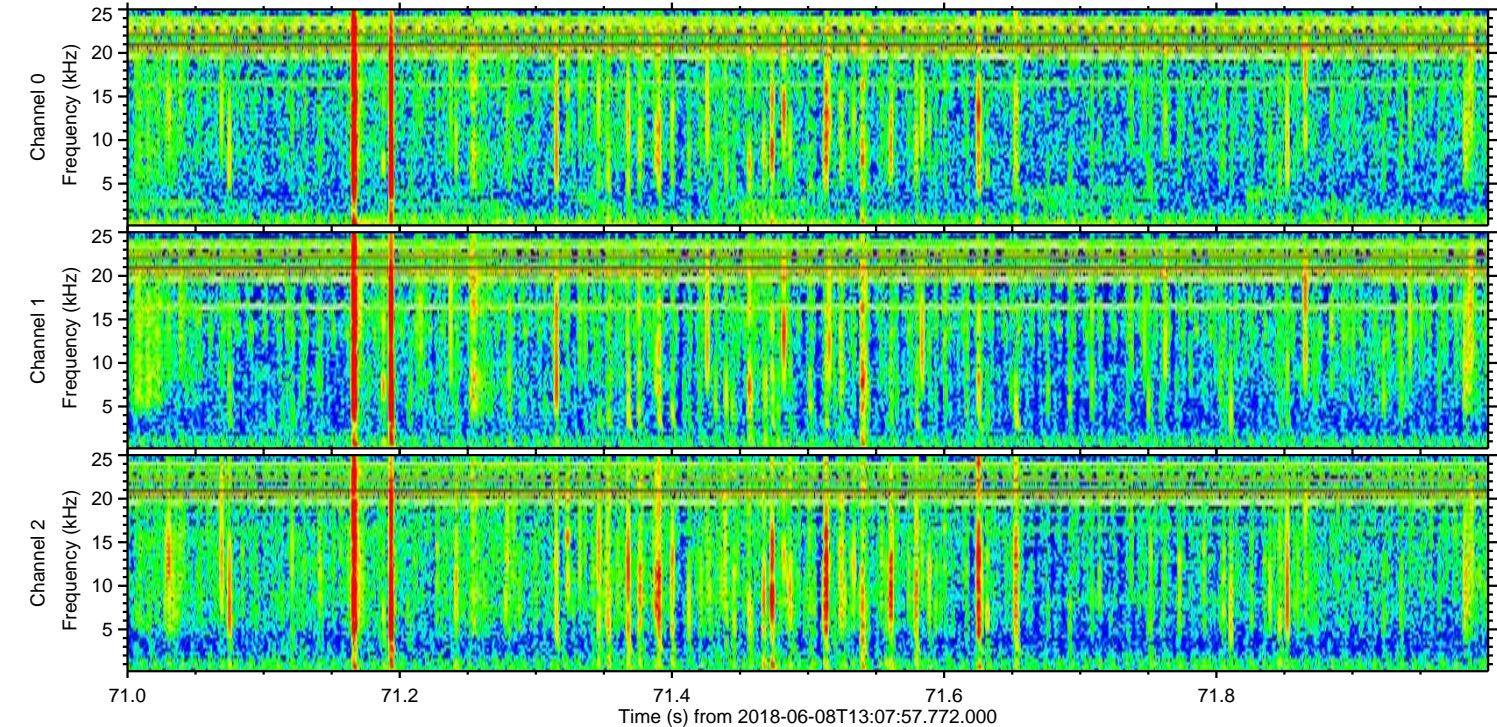
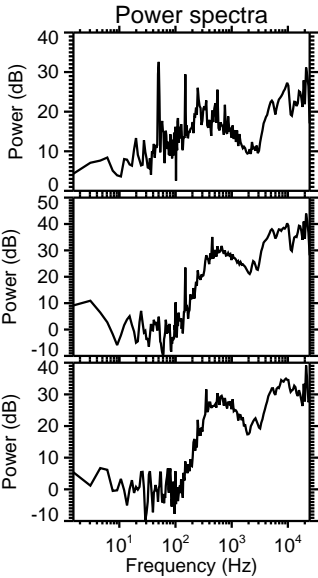
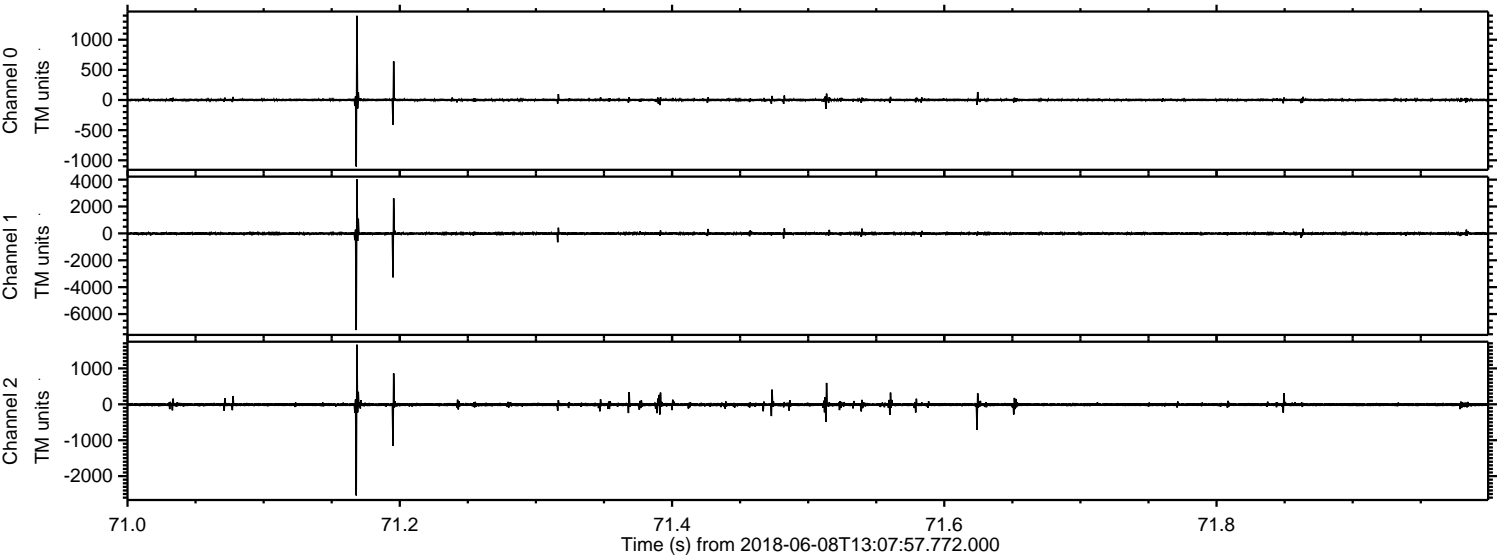
Processed Fri Jun 8 15:16:19 2018 by ELM ver.2012-10-06 from 001__elm20180608_130756__dat00.bin



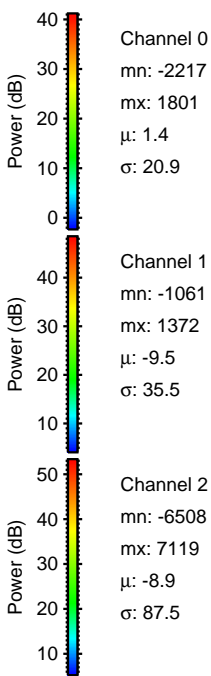
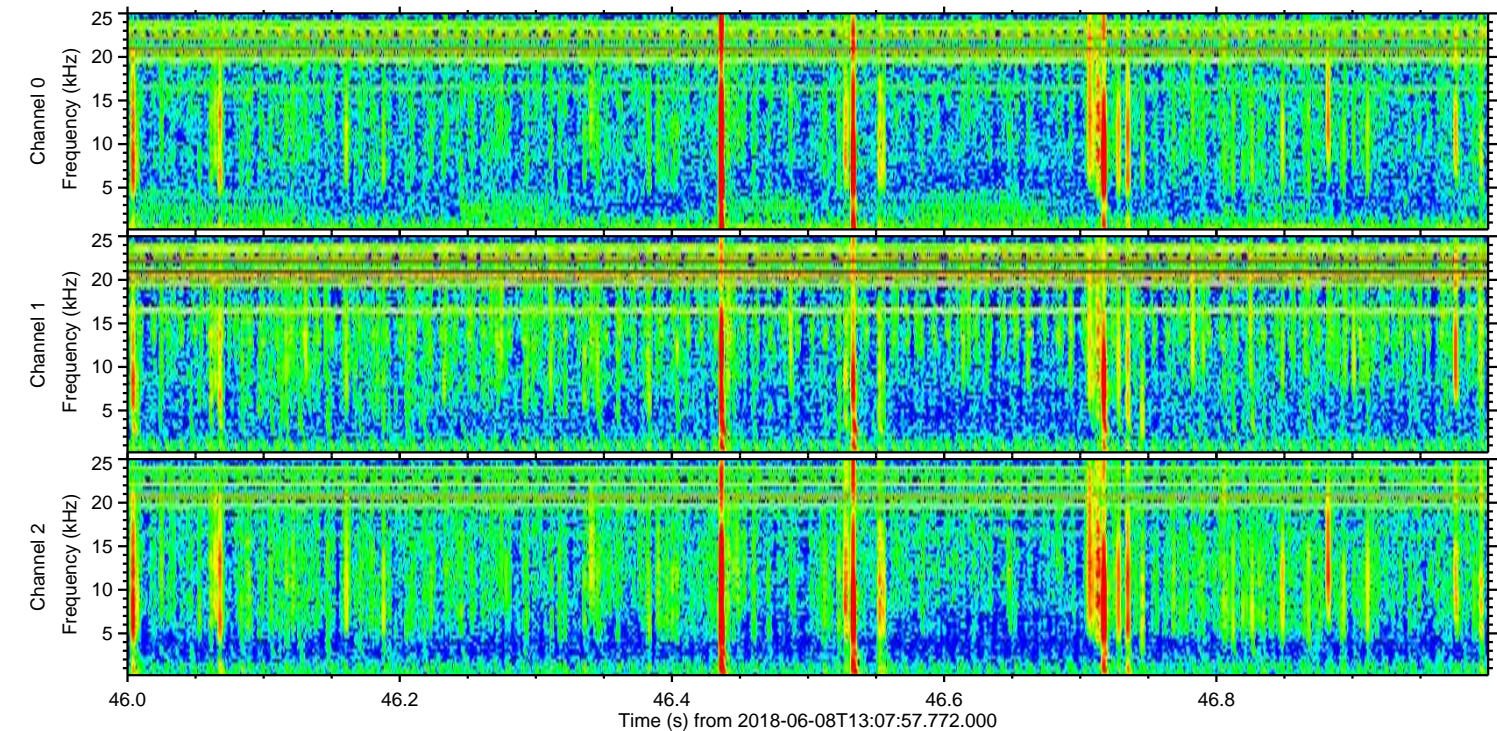
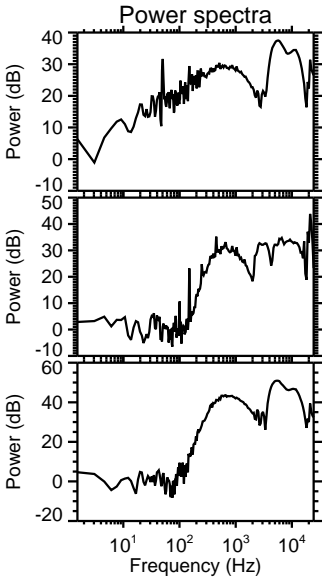
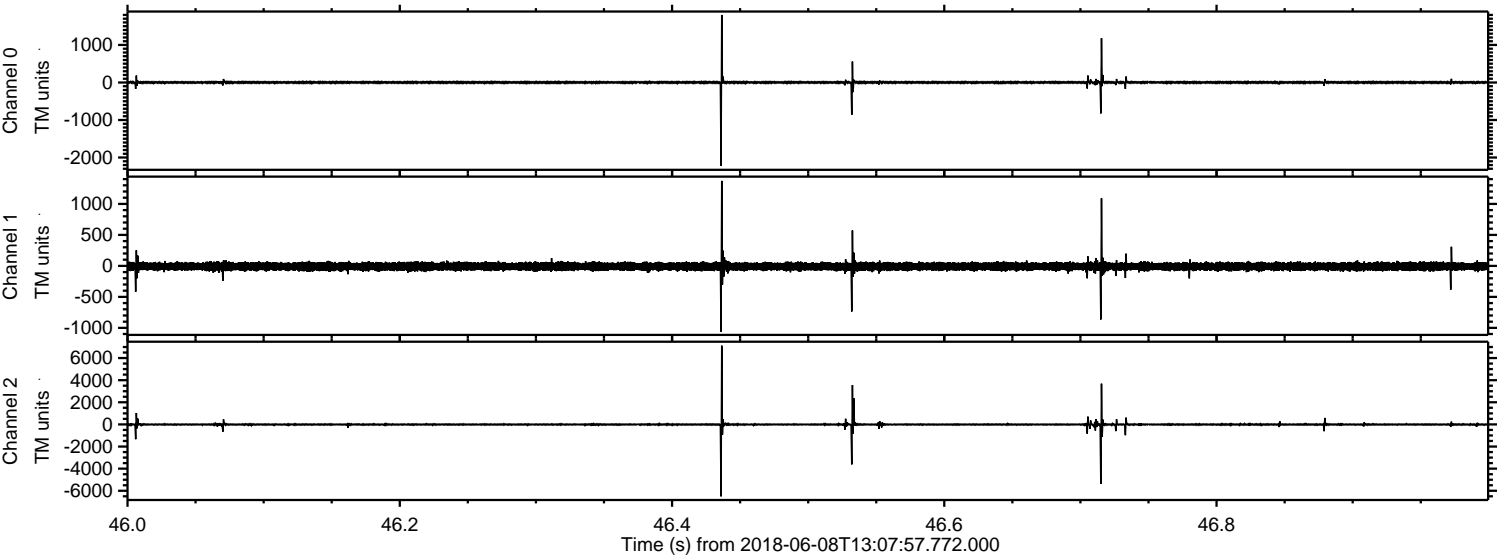
Processed Fri Jun 8 15:16:20 2018 by ELM ver.2012-10-06 from 001__elm20180608_130756__dat00.bin



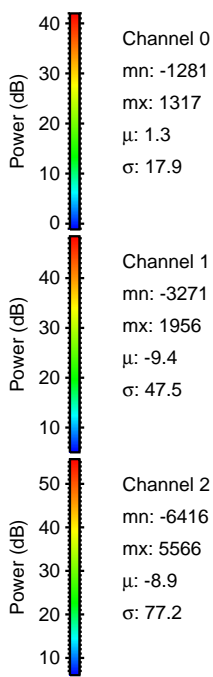
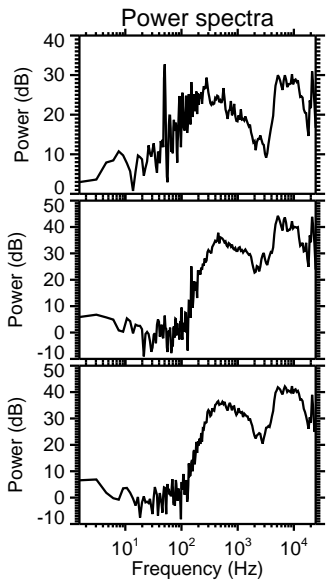
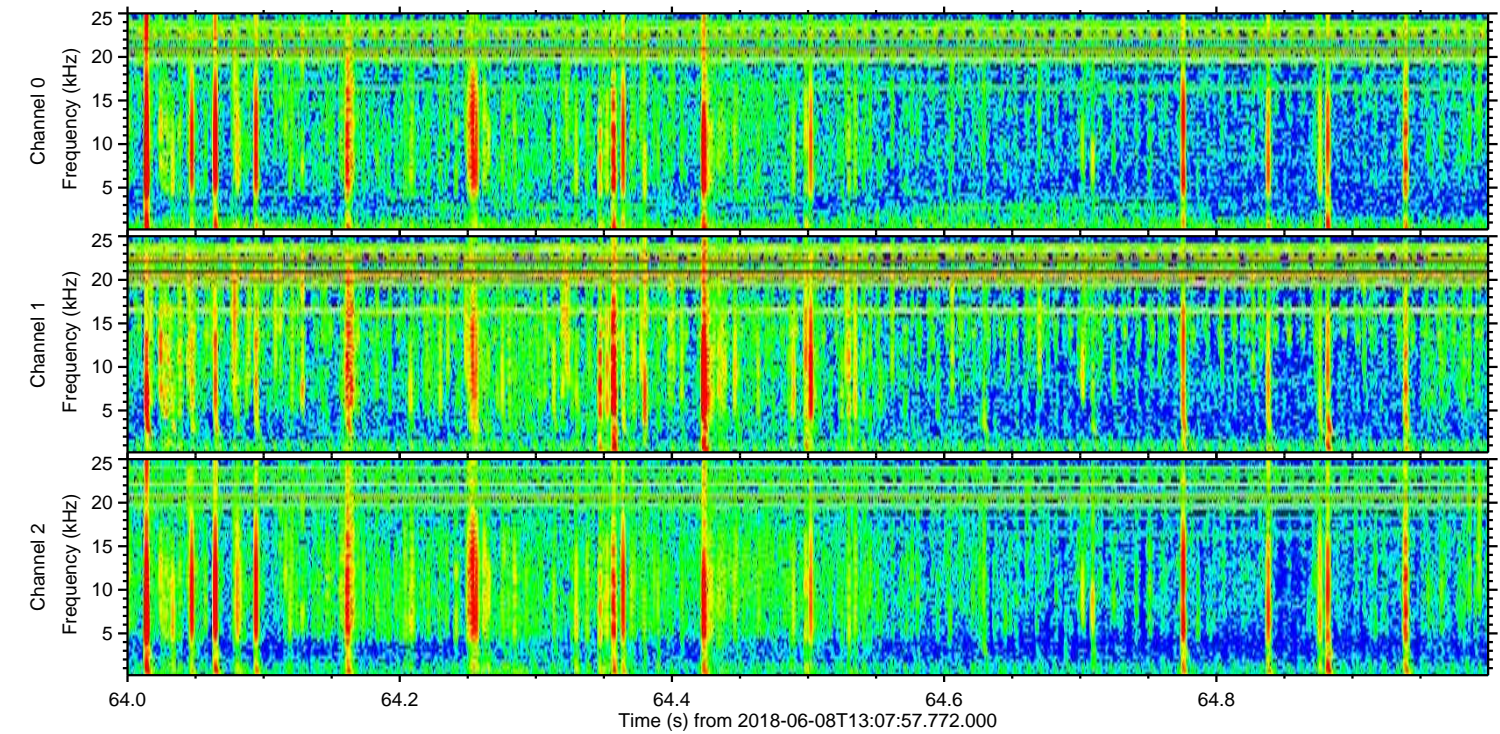
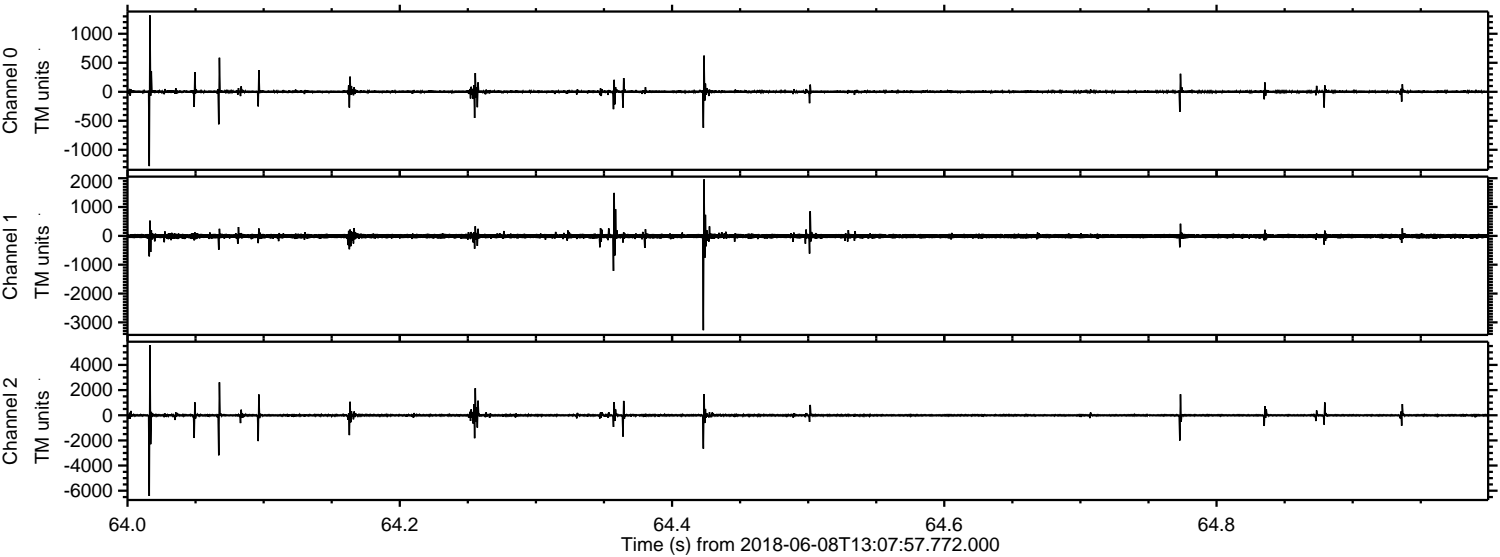
Processed Fri Jun 8 15:16:20 2018 by ELM ver.2012-10-06 from 001__elm20180608_130756__dat00.bin



Processed Fri Jun 8 15:16:21 2018 by ELM ver.2012-10-06 from 001__elm20180608_130756__dat00.bin



Processed Fri Jun 8 15:16:22 2018 by ELM ver.2012-10-06 from 001__elm20180608_130756__dat00.bin



Channel 0

mn: -1281
mx: 1317
 μ : 1.3
 σ : 17.9

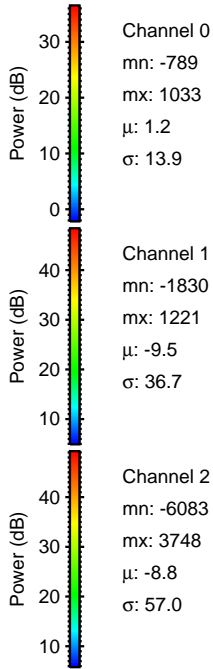
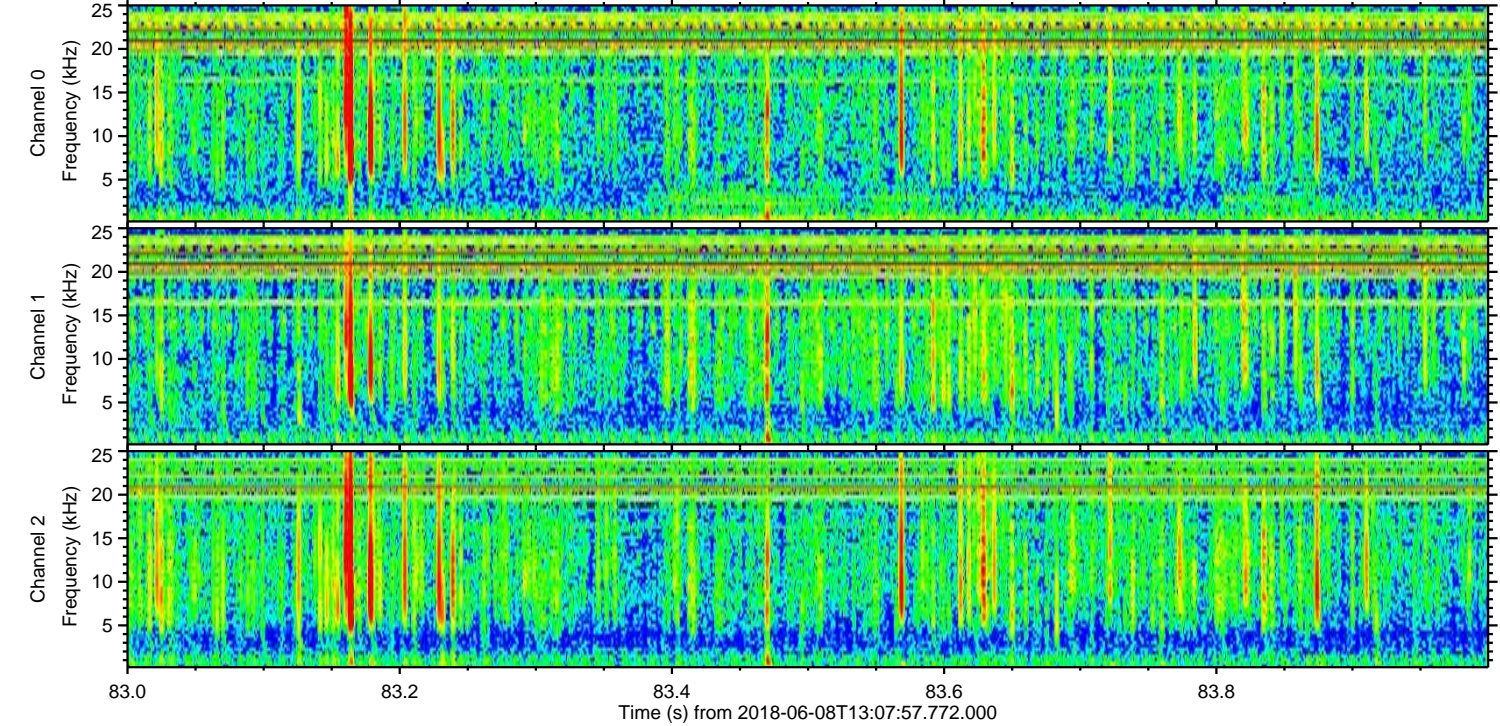
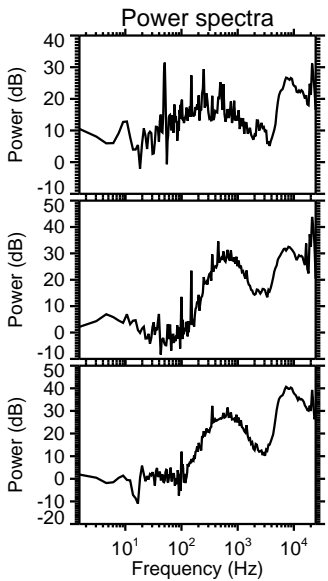
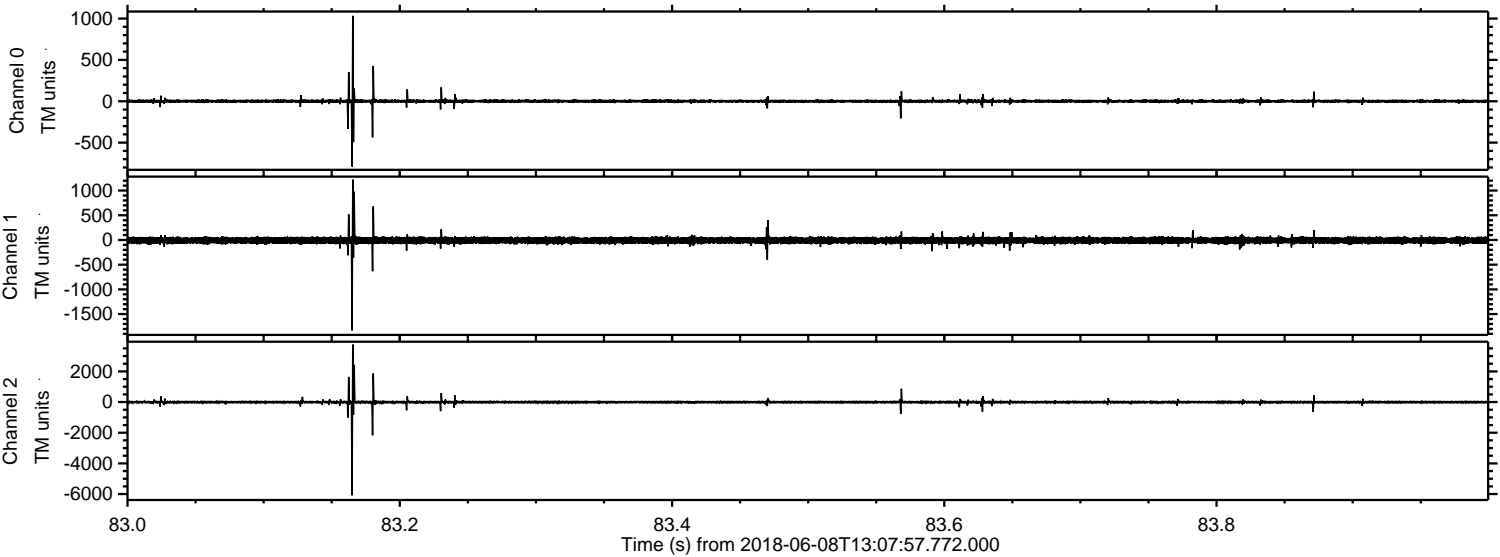
Channel 1

mn: -3271
mx: 1956
 μ : -9.4
 σ : 47.5

Channel 2

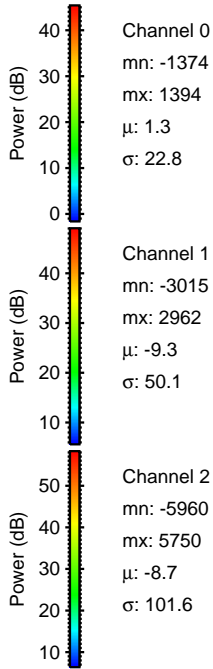
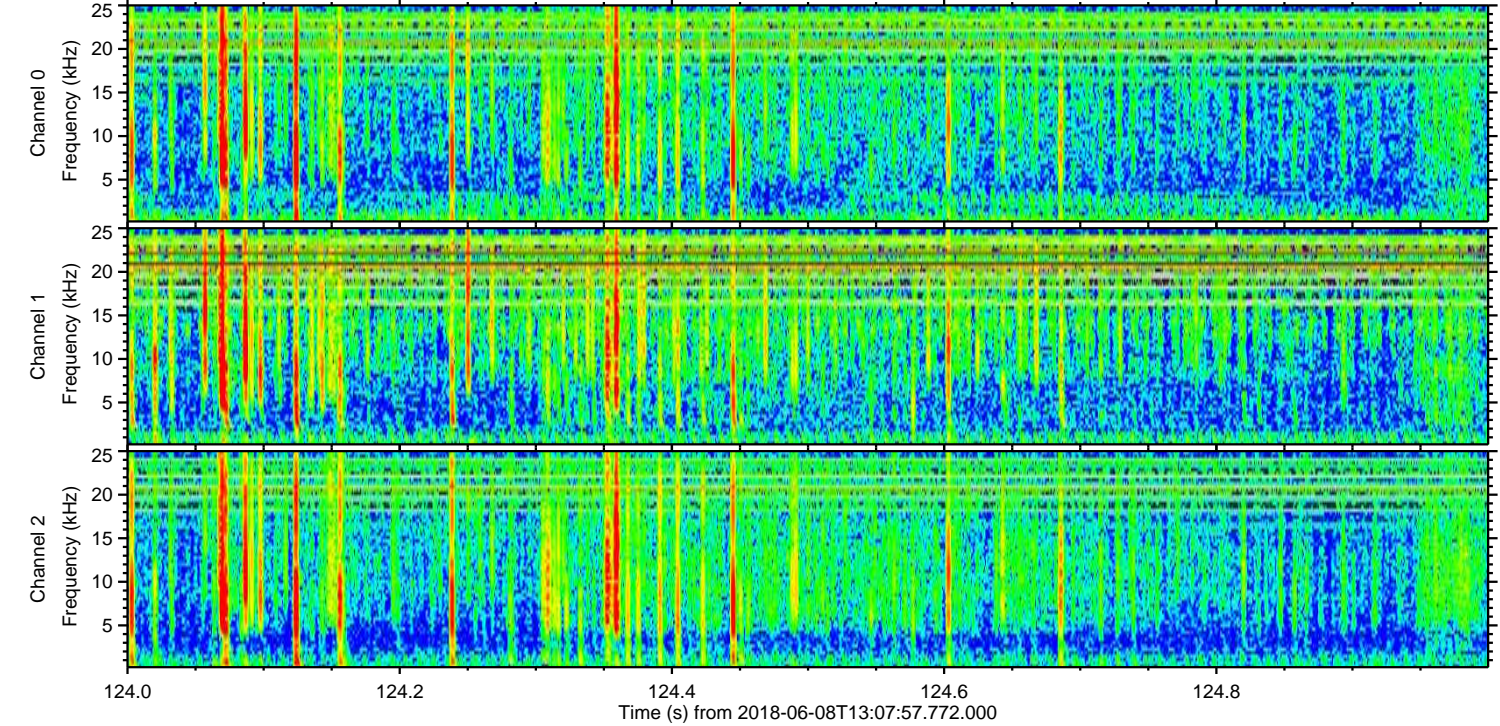
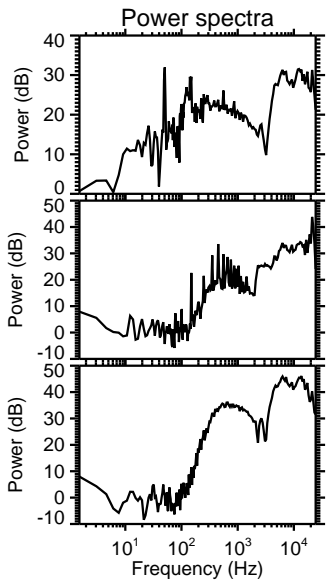
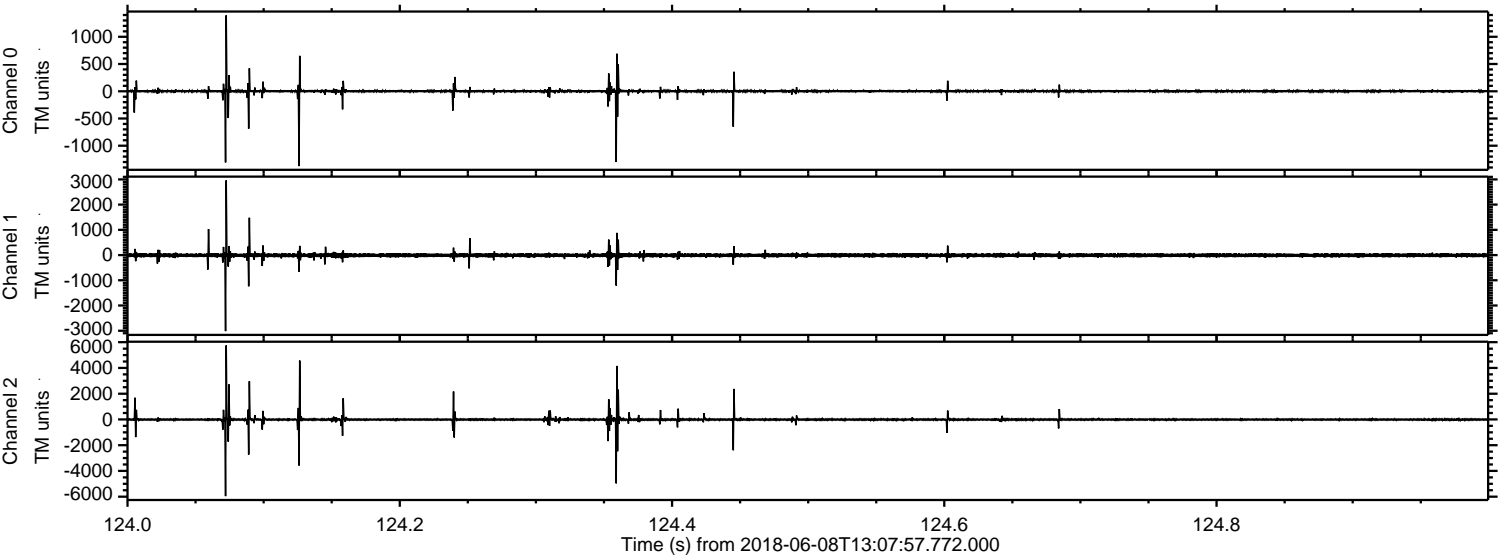
mn: -6416
mx: 5566
 μ : -8.9
 σ : 77.2

Processed Fri Jun 8 15:16:22 2018 by ELM ver.2012-10-06 from 001__elm20180608_130756__dat00.bin



ELMAVAN 3D WAVEFORMS (Measured data sampled at 50 kHz) 51000 packets of 144 samples from 2018-06-08T13:07:57.772.000. Part 125/147

Processed Fri Jun 8 15:16:23 2018 by ELM ver.2012-10-06 from 001__elm20180608_130756__dat00.bin



Channel 0
mn: -1374
mx: 1394
 μ : 1.3
 σ : 22.8

Channel 1
mn: -3015
mx: 2962
 μ : -9.3
 σ : 50.1

Channel 2
mn: -5960
mx: 5750
 μ : -8.7
 σ : 101.6

Processed Fri Jun 8 15:16:24 2018 by ELM ver.2012-10-06 from 001__elm20180608_130756__dat00.bin

