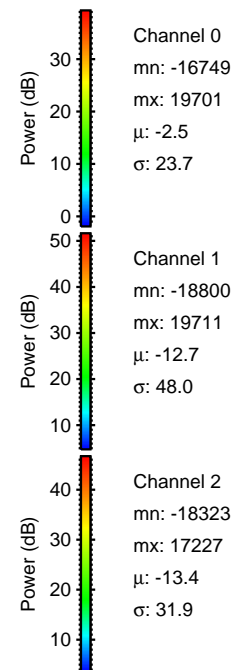
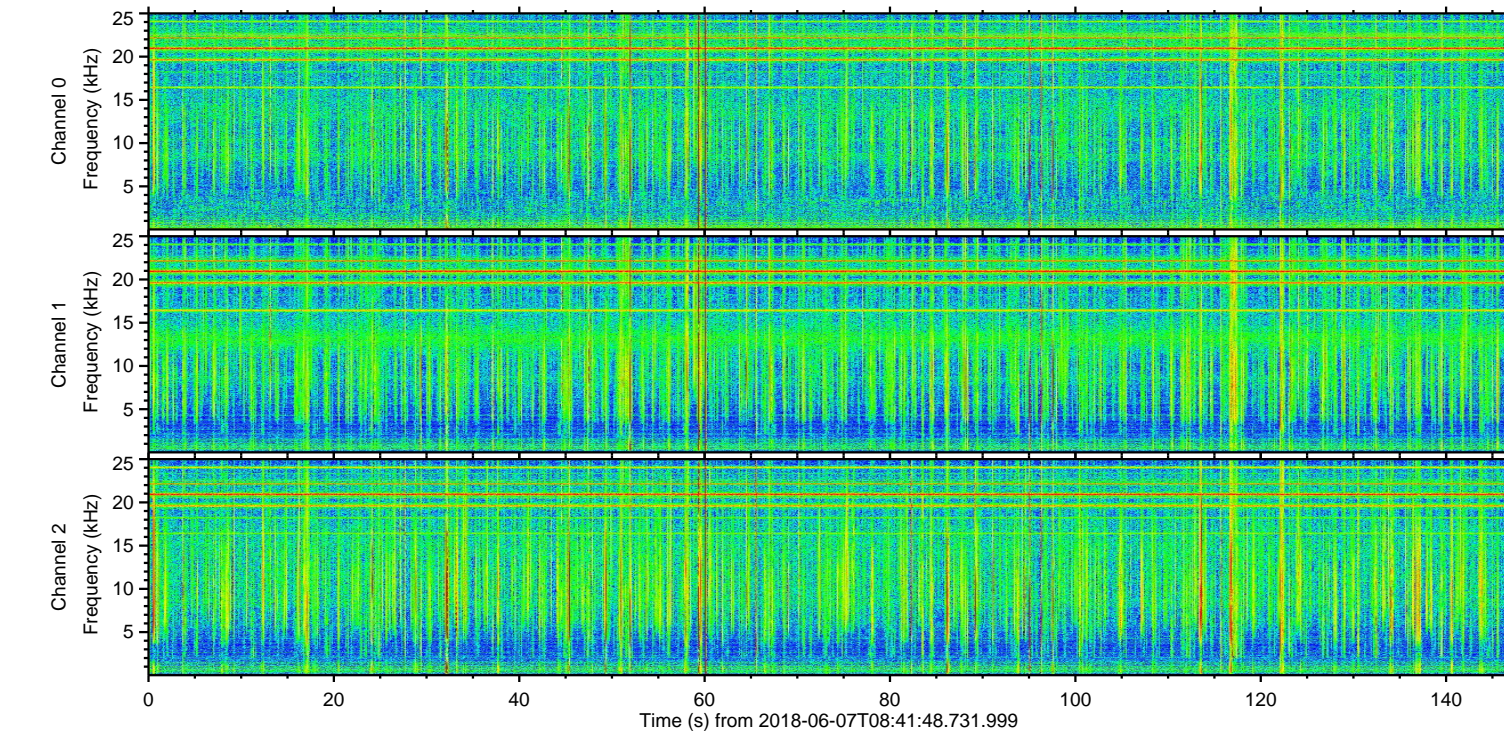
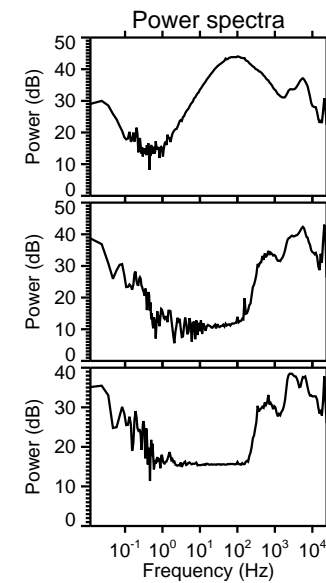
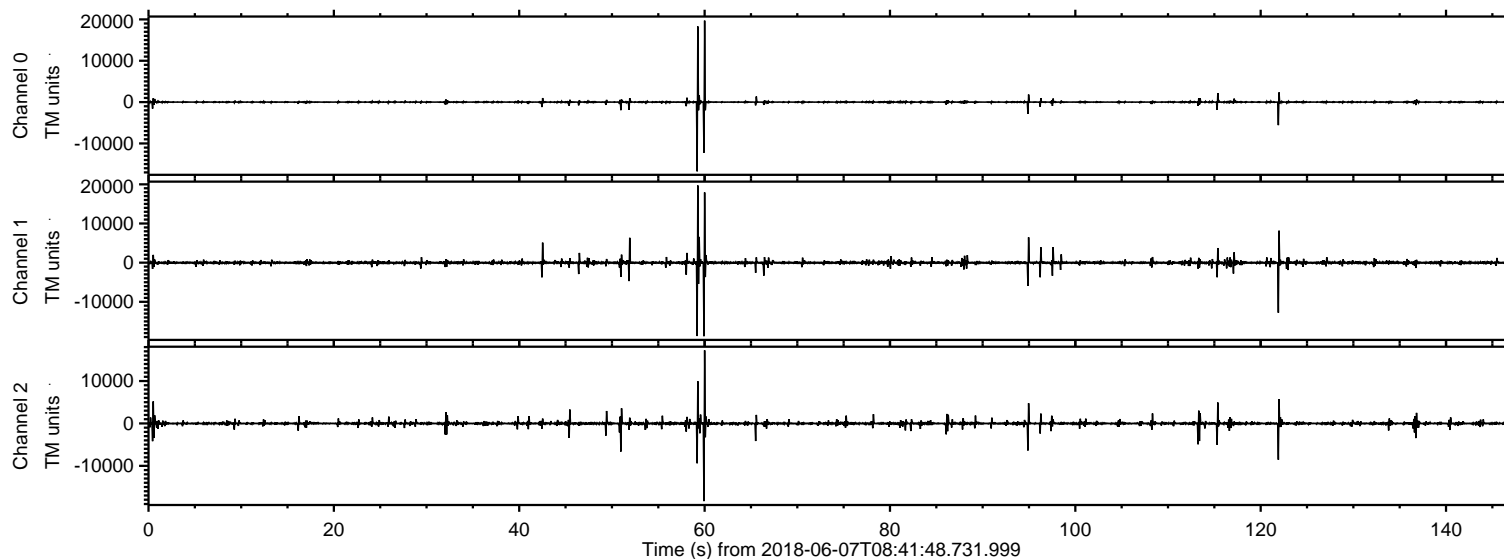
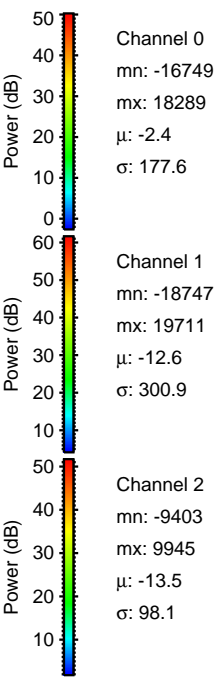
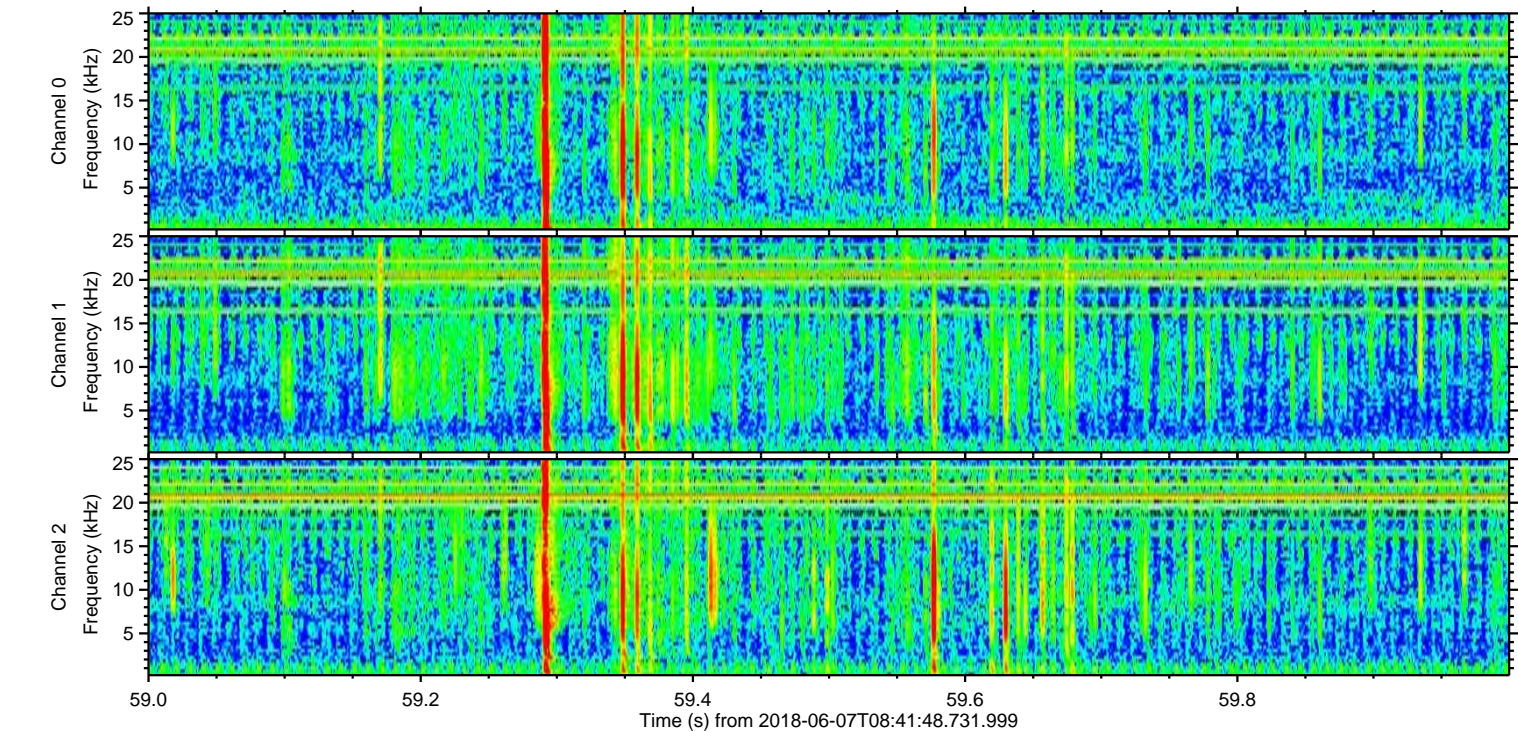
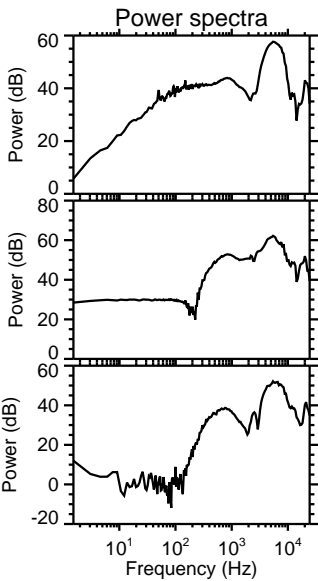
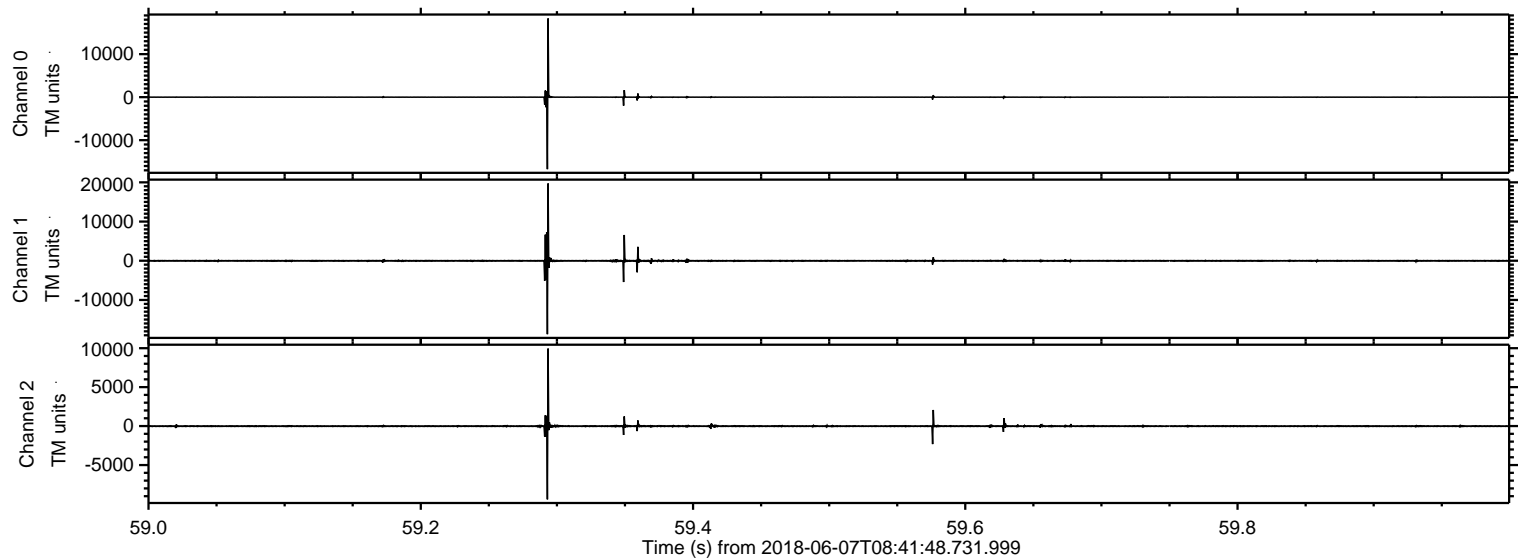


ELMAVAN 3D WAVEFORMS (Measured data sampled at 50 kHz) 51000 packets of 144 samples from 2018-06-07T08:41:48.731.999.

Processed Thu Jun 7 10:49:54 2018 by ELM ver.2012-10-06 from 001__elm20180607_084147__dat00.bin

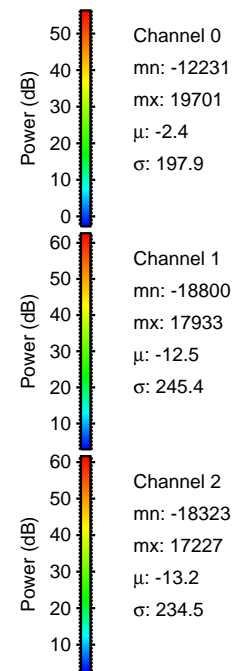
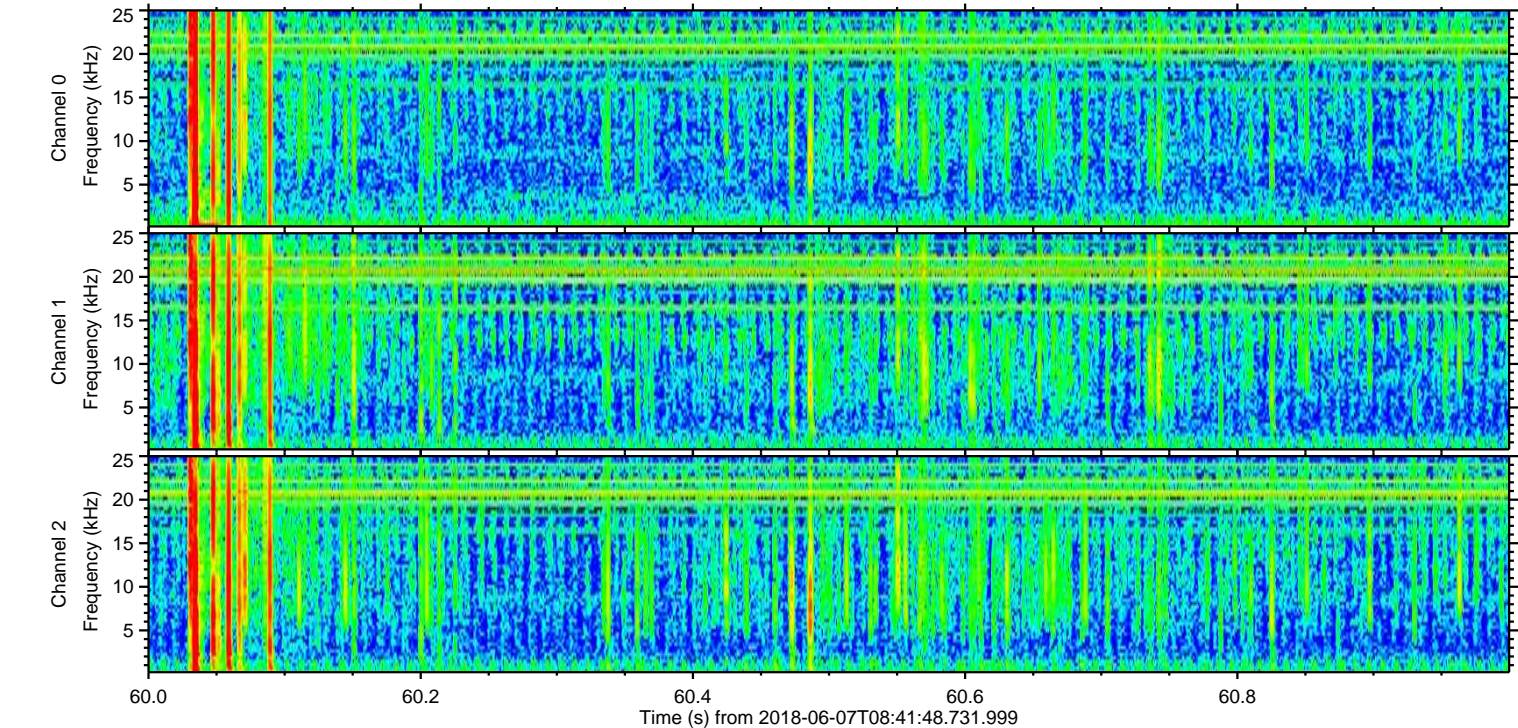
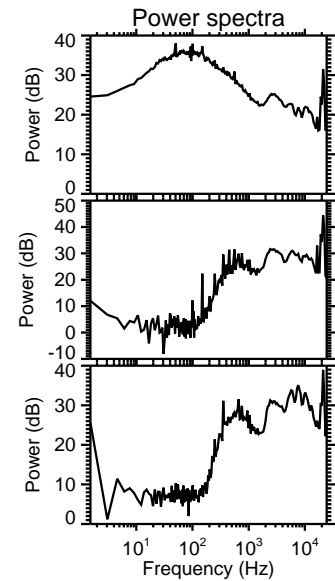
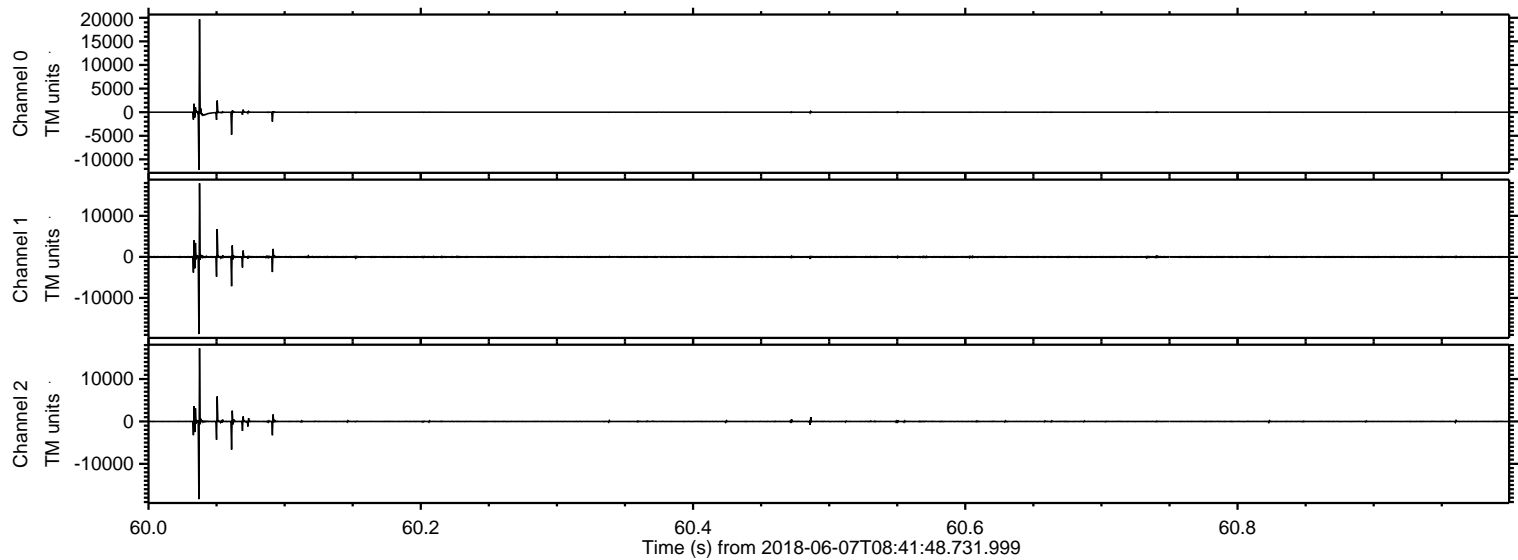


Processed Thu Jun 7 10:50:01 2018 by ELM ver.2012-10-06 from 001__elm20180607_084147__dat00.bin



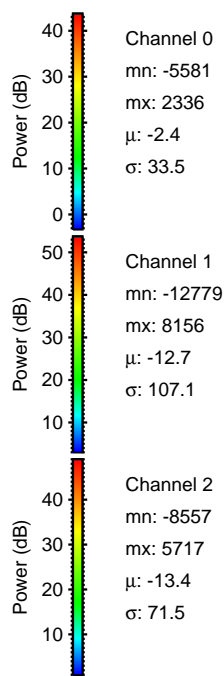
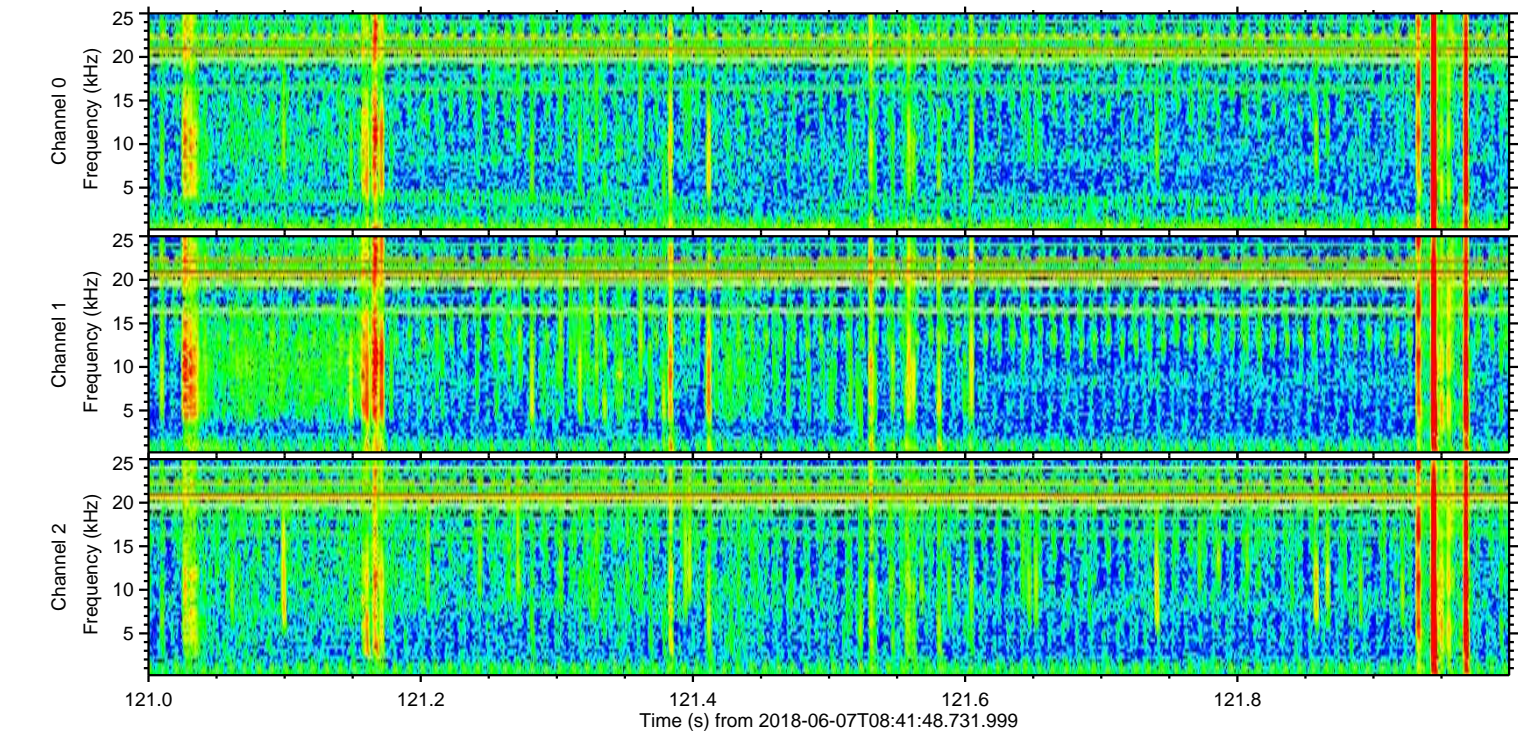
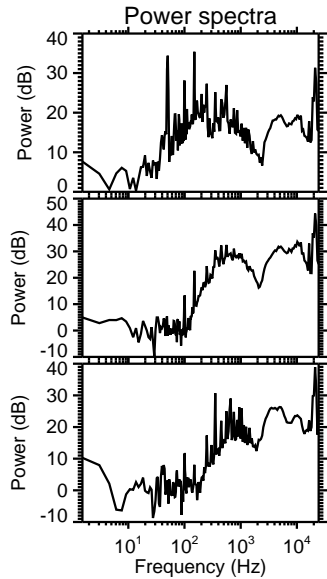
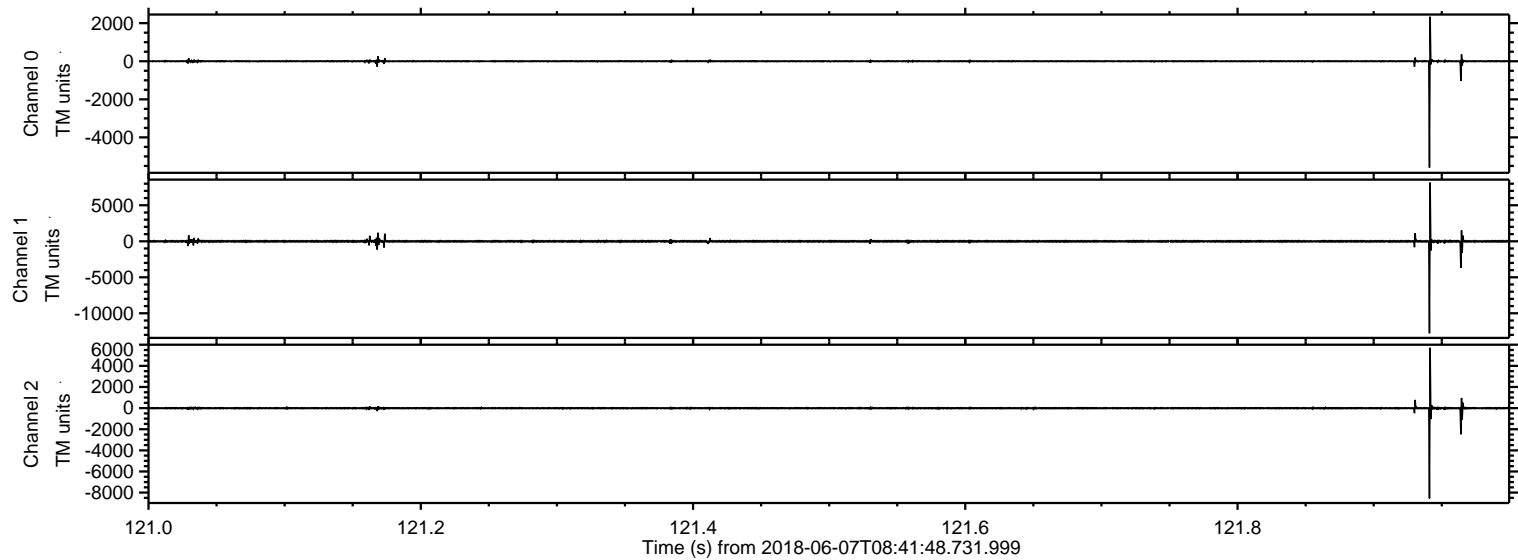
ELMAVAN 3D WAVEFORMS (Measured data sampled at 50 kHz) 51000 packets of 144 samples from 2018-06-07T08:41:48.731.999. Part 61/147

Processed Thu Jun 7 10:50:02 2018 by ELM ver.2012-10-06 from 001__elm20180607_084147__dat00.bin

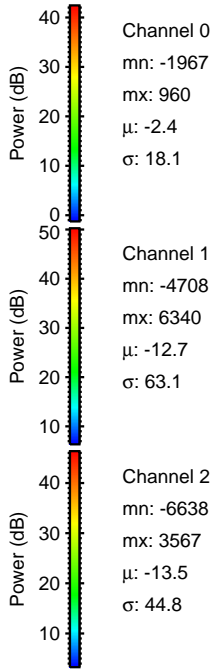
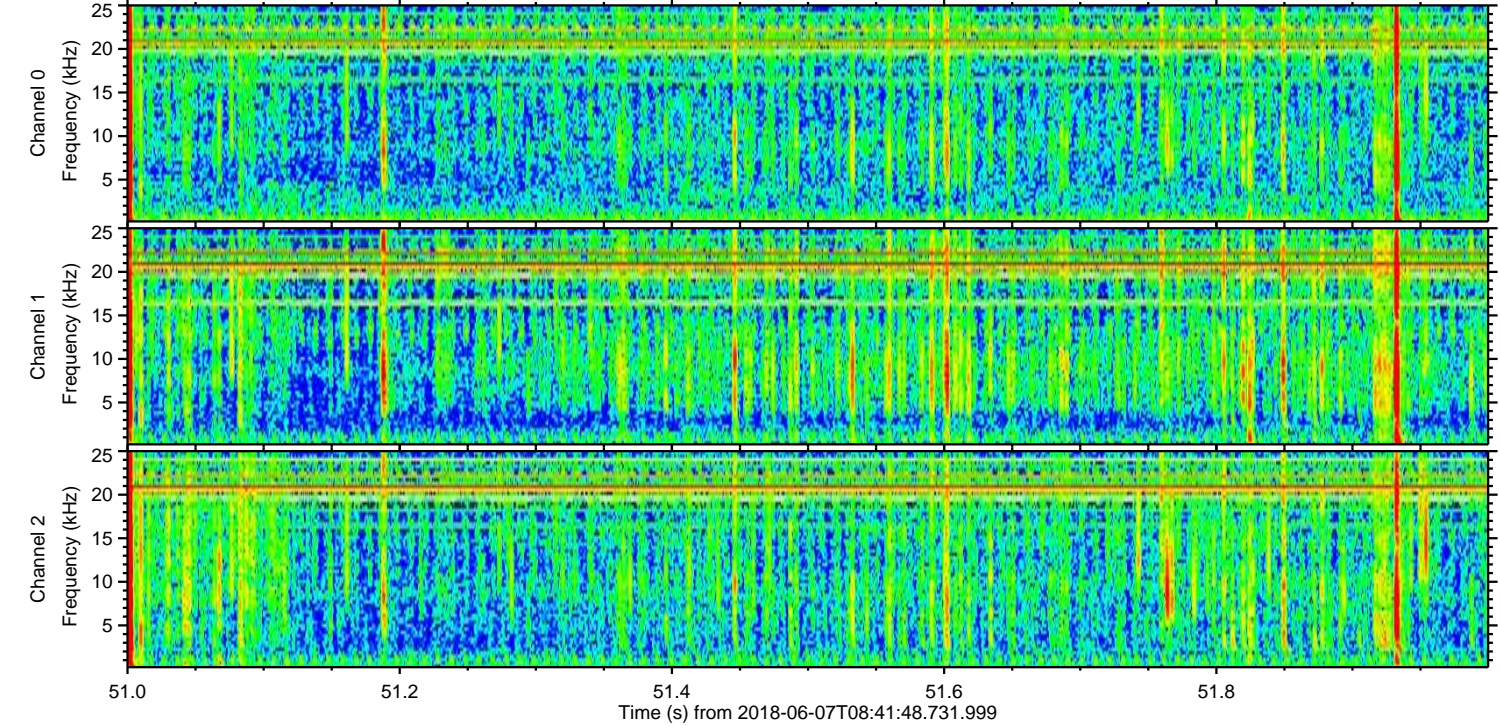
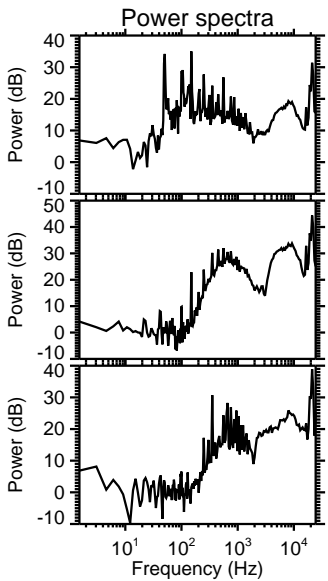
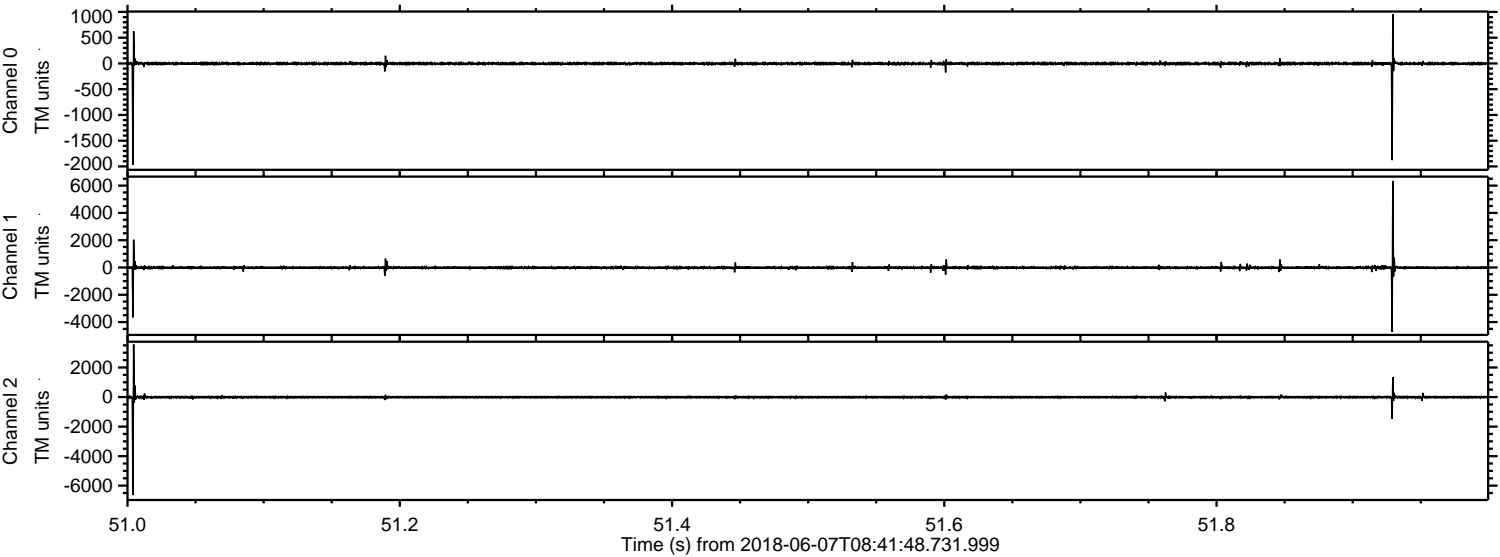


ELMAVAN 3D WAVEFORMS (Measured data sampled at 50 kHz) 51000 packets of 144 samples from 2018-06-07T08:41:48.731.999. Part 122/147

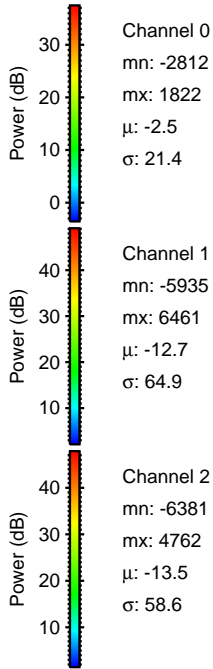
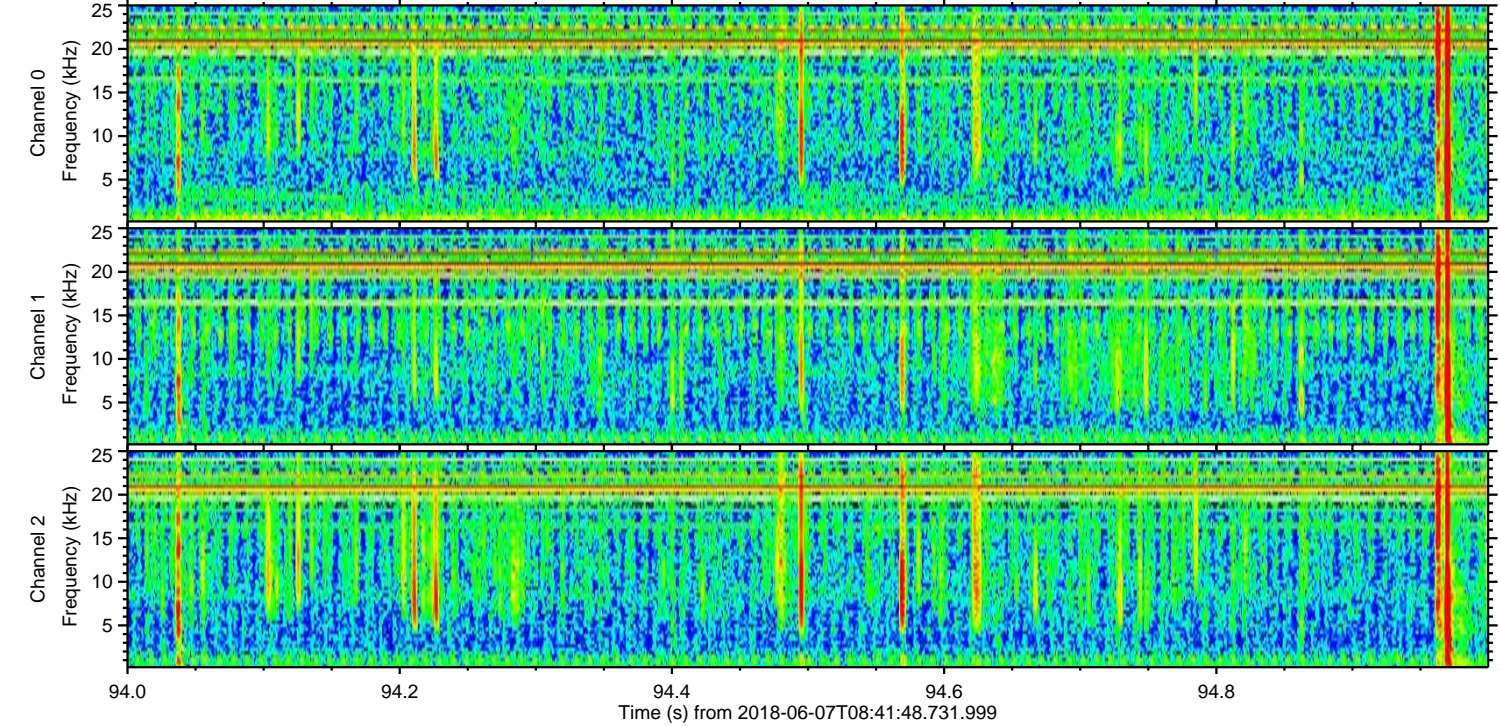
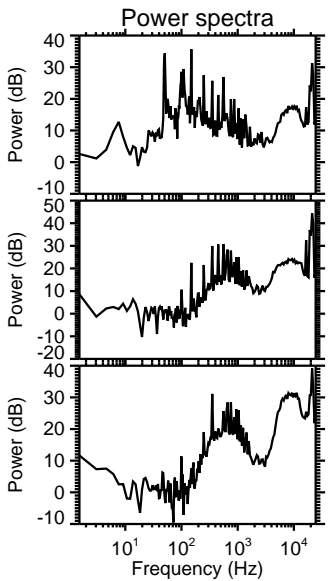
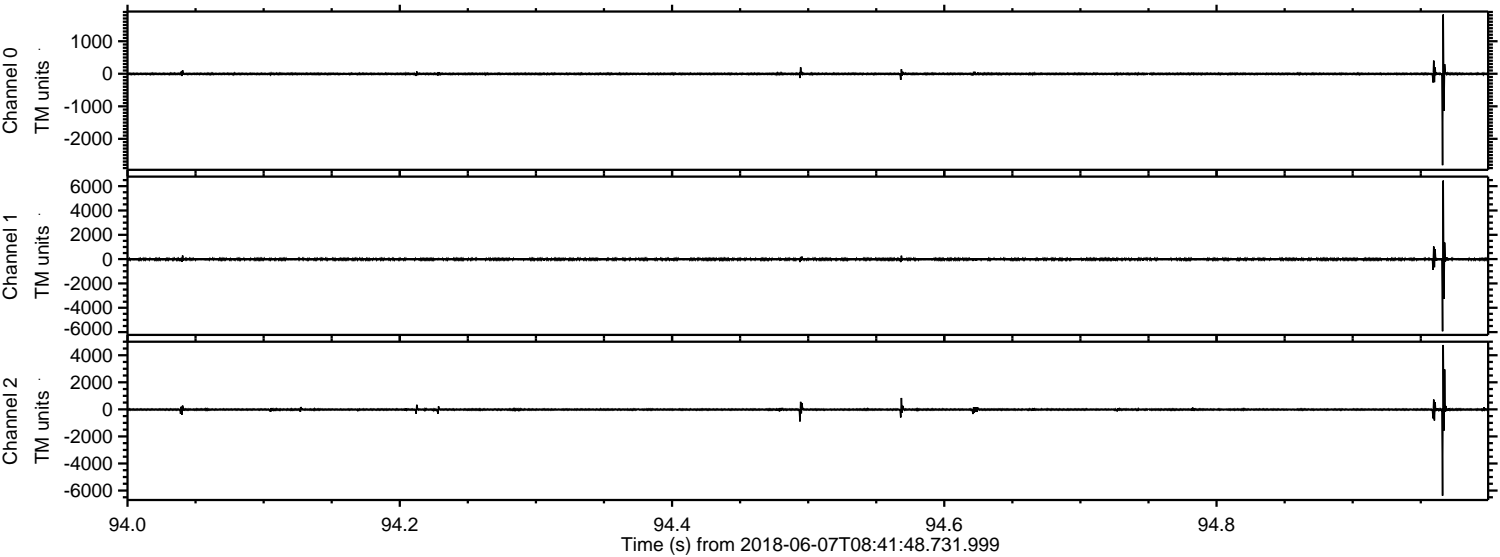
Processed Thu Jun 7 10:50:03 2018 by ELM ver.2012-10-06 from 001__elm20180607_084147__dat00.bin



Processed Thu Jun 7 10:50:04 2018 by ELM ver.2012-10-06 from 001__elm20180607_084147__dat00.bin

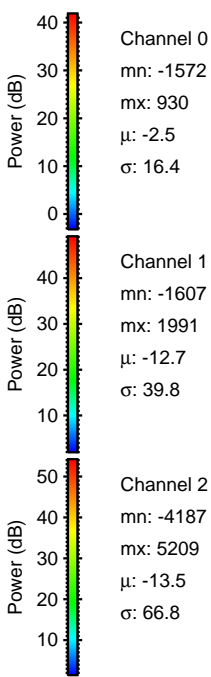
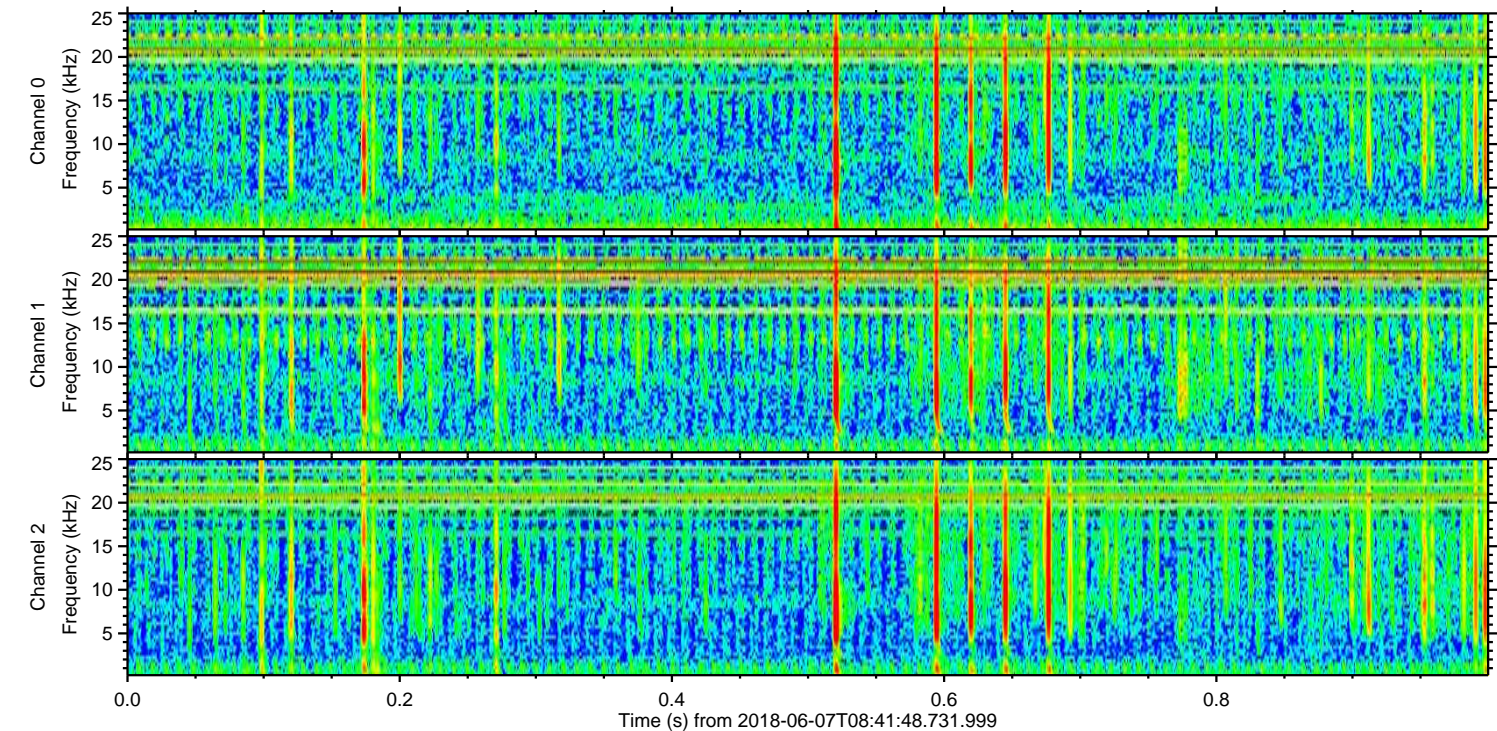
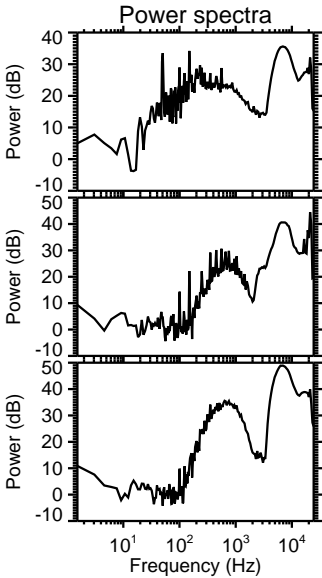
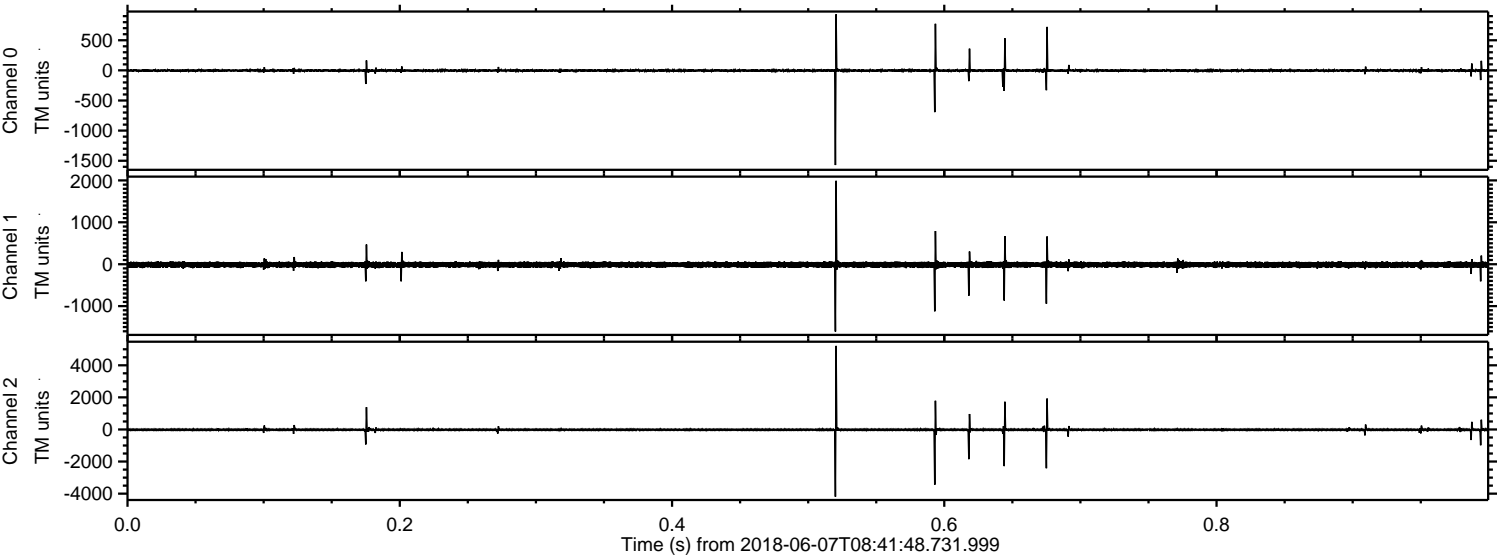


Processed Thu Jun 7 10:50:05 2018 by ELM ver.2012-10-06 from 001__elm20180607_084147__dat00.bin

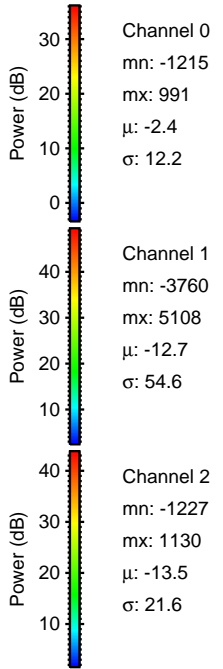
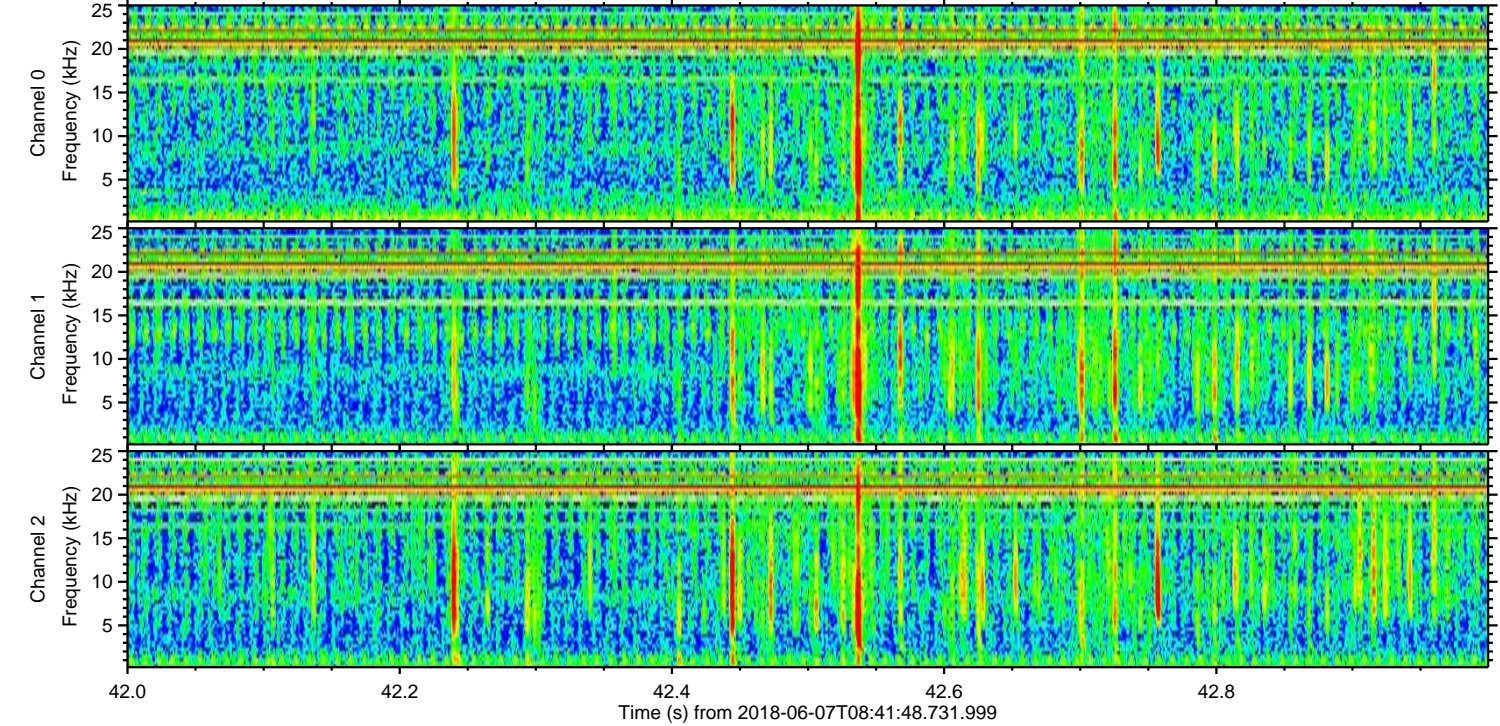
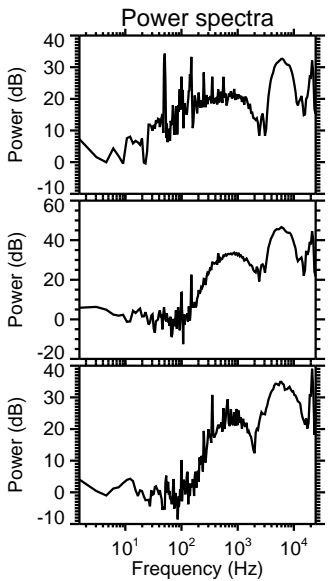
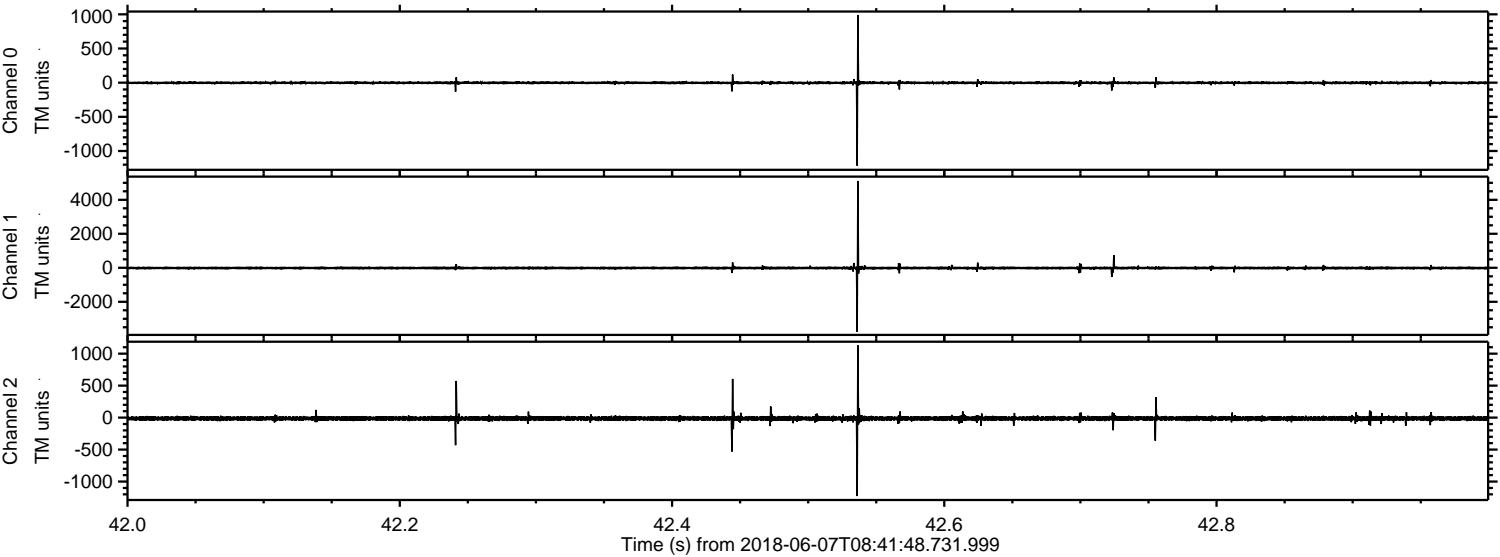


ELMAVAN 3D WAVEFORMS (Measured data sampled at 50 kHz) 51000 packets of 144 samples from 2018-06-07T08:41:48.731.999. Part 1/147

Processed Thu Jun 7 10:50:05 2018 by ELM ver.2012-10-06 from 001__elm20180607_084147__dat00.bin

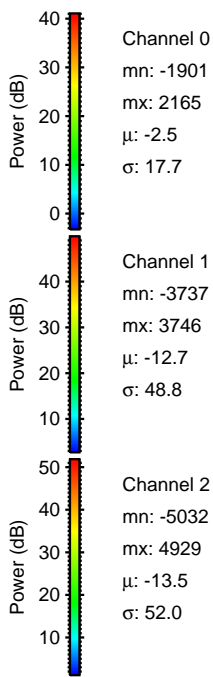
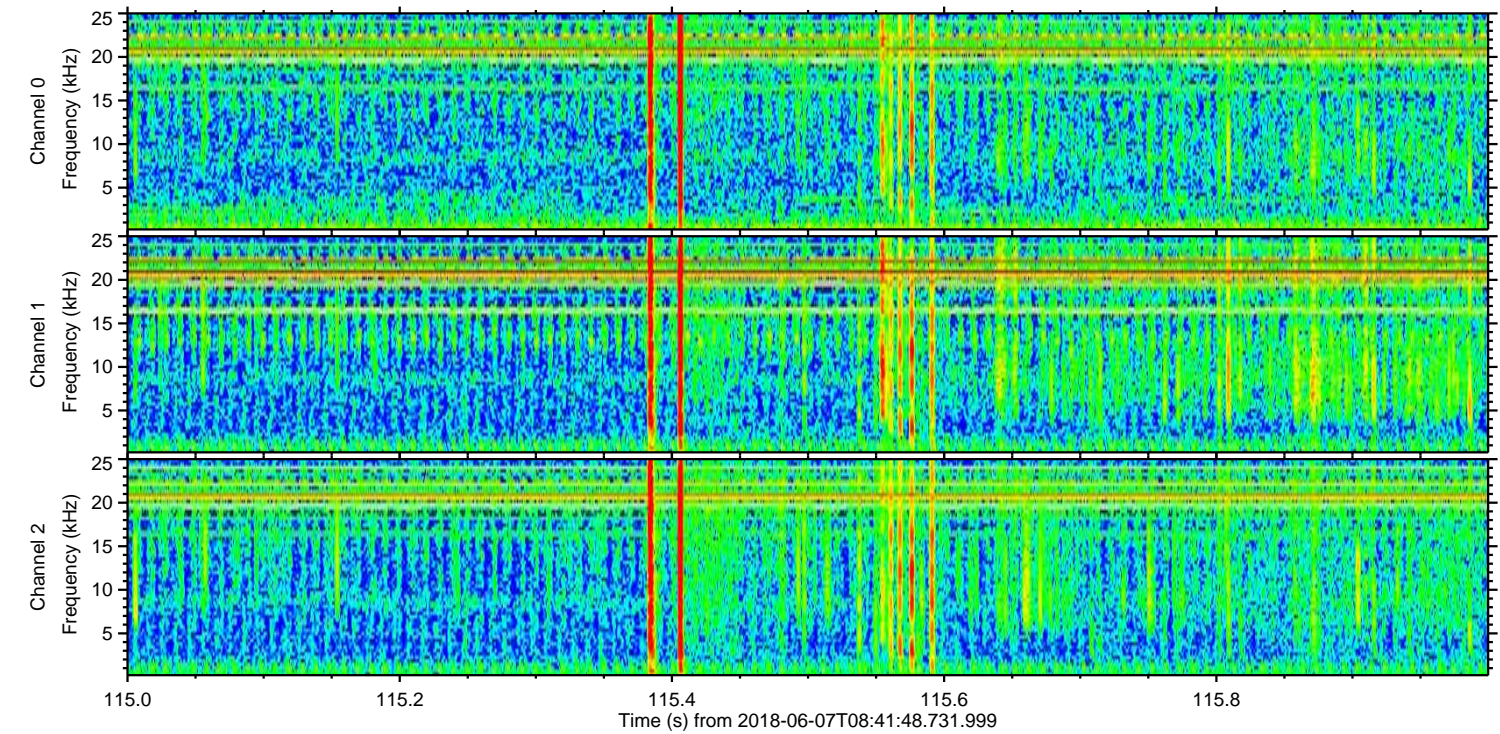
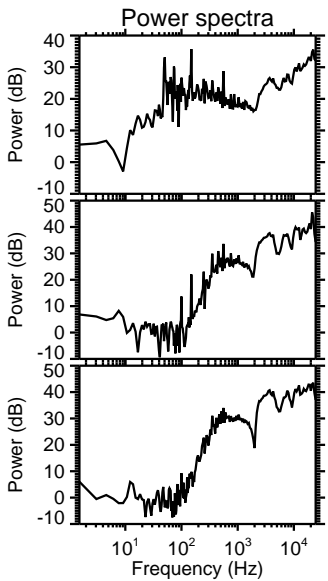
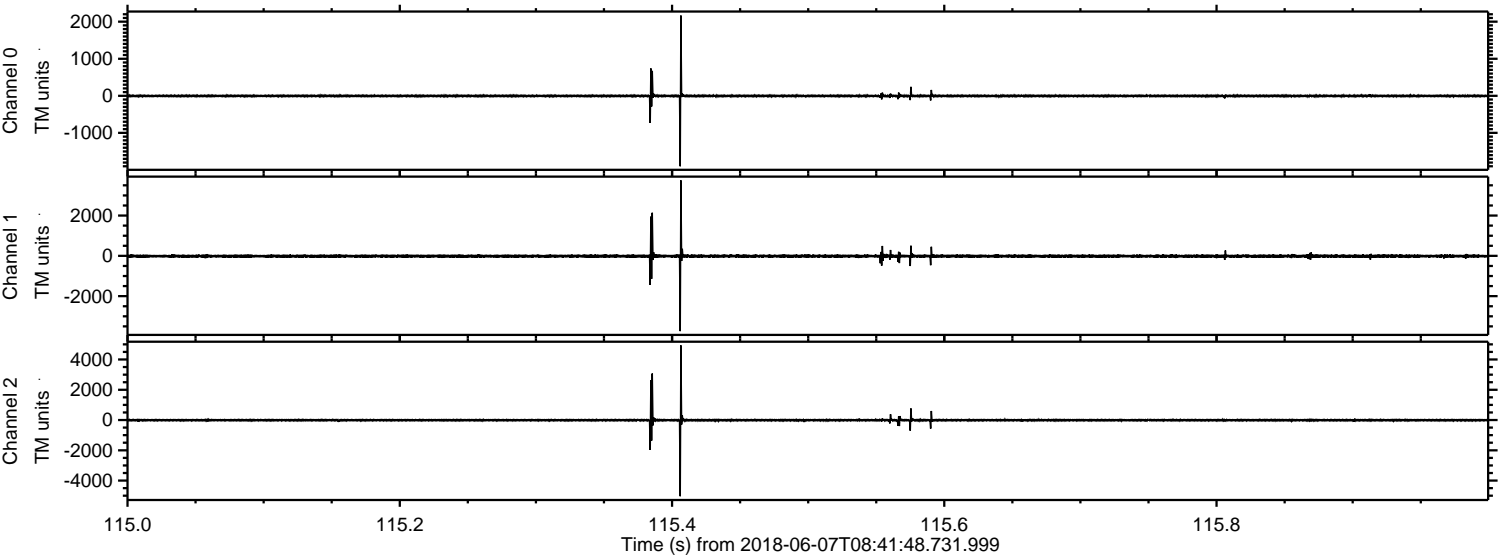


Processed Thu Jun 7 10:50:06 2018 by ELM ver.2012-10-06 from 001__elm20180607_084147__dat00.bin



ELMAVAN 3D WAVEFORMS (Measured data sampled at 50 kHz) 51000 packets of 144 samples from 2018-06-07T08:41:48.731.999. Part 116/147

Processed Thu Jun 7 10:50:07 2018 by ELM ver.2012-10-06 from 001__elm20180607_084147__dat00.bin



Channel 0
mn: -1901
mx: 2165
 μ : -2.5
 σ : 17.7

Channel 1
mn: -3737
mx: 3746
 μ : -12.7
 σ : 48.8

Channel 2
mn: -5032
mx: 4929
 μ : -13.5
 σ : 52.0

Processed Thu Jun 7 10:50:07 2018 by ELM ver.2012-10-06 from 001__elm20180607_084147__dat00.bin

