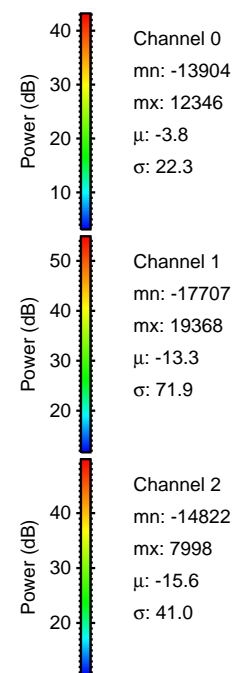
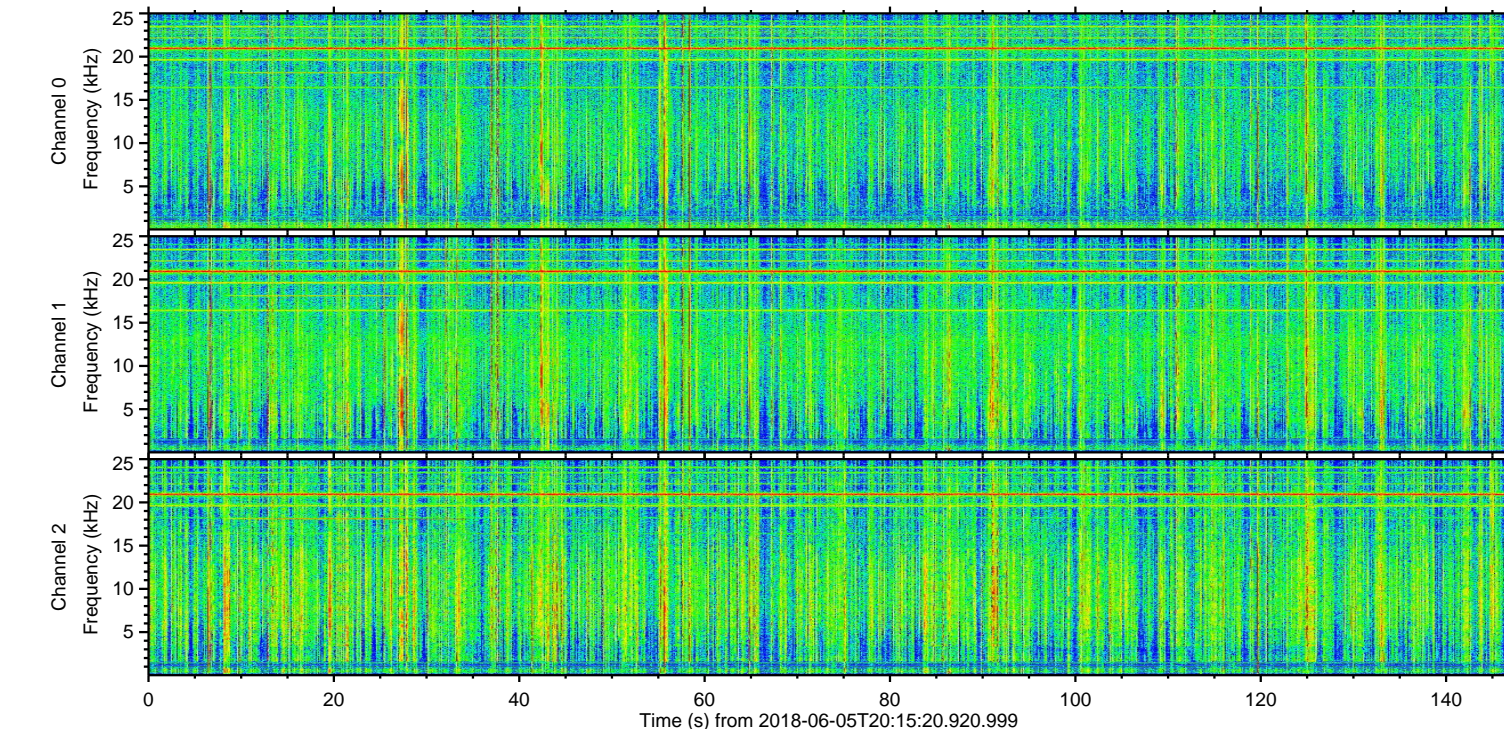
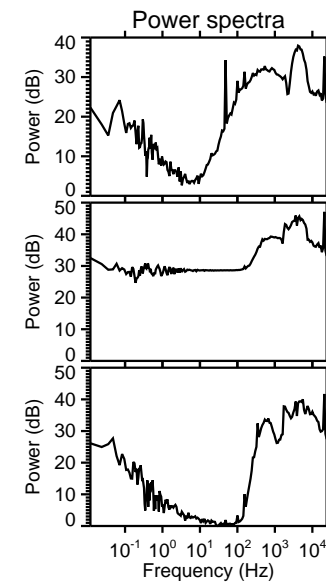
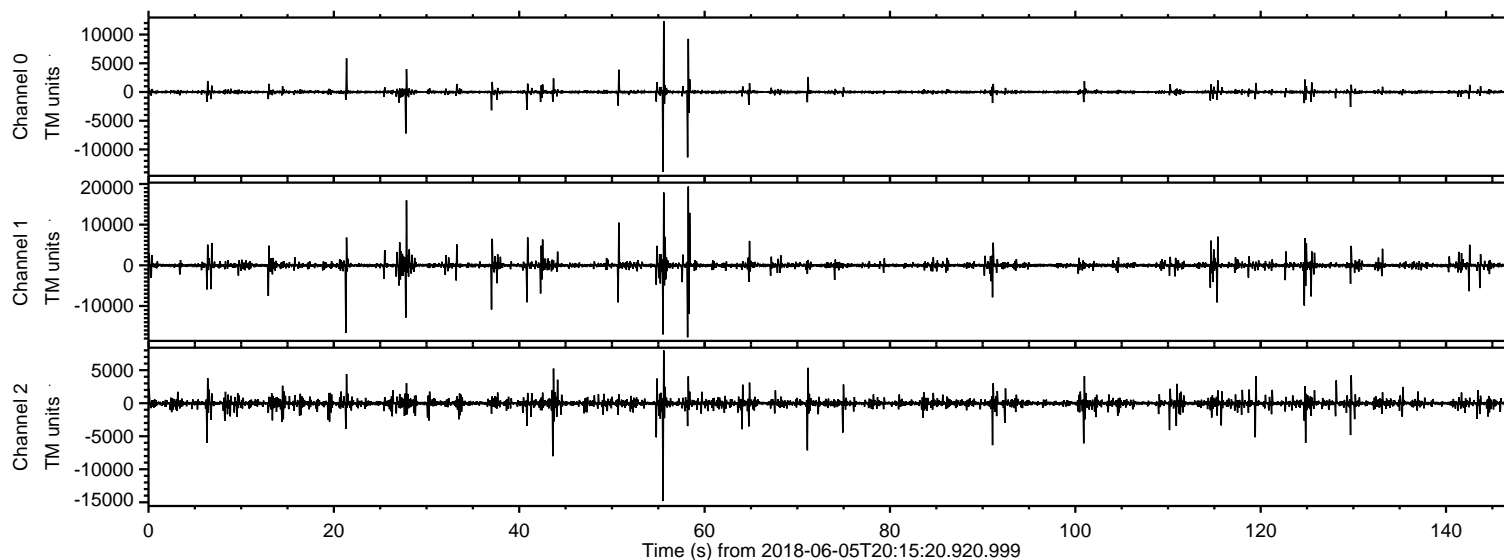
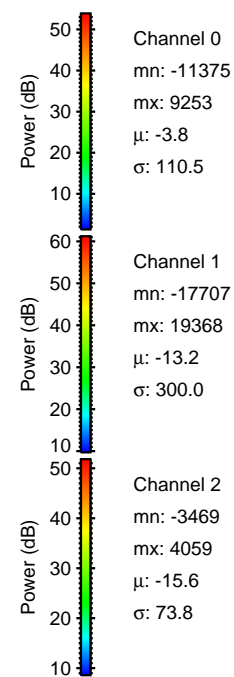
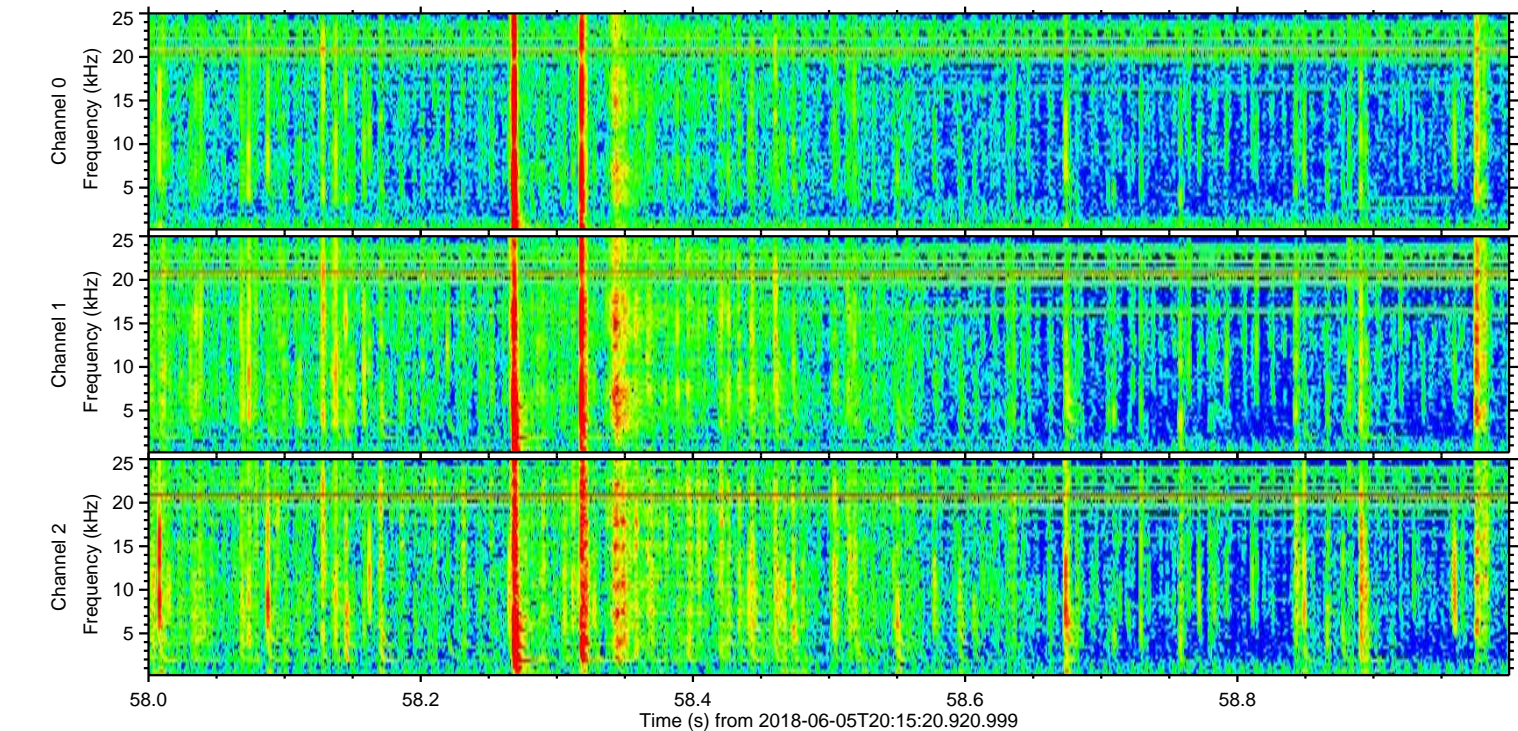
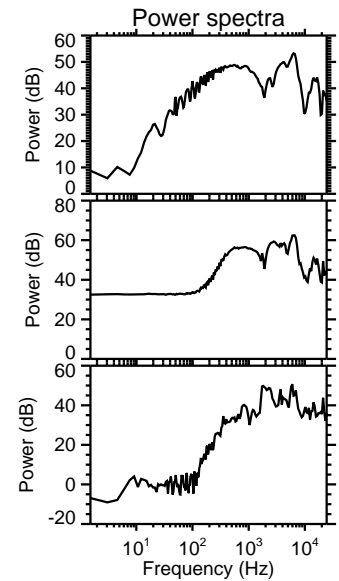
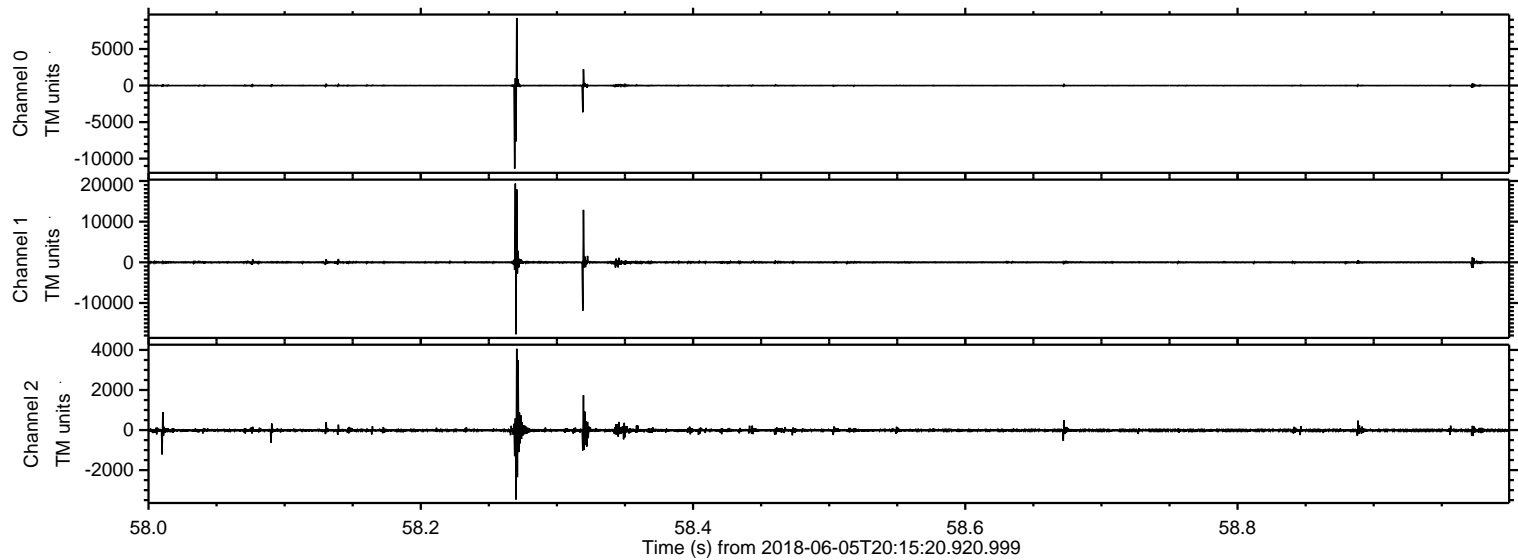


ELMAVAN 3D WAVEFORMS (Measured data sampled at 50 kHz) 51000 packets of 144 samples from 2018-06-05T20:15:20.920.999.

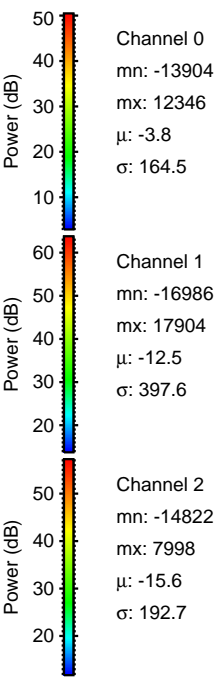
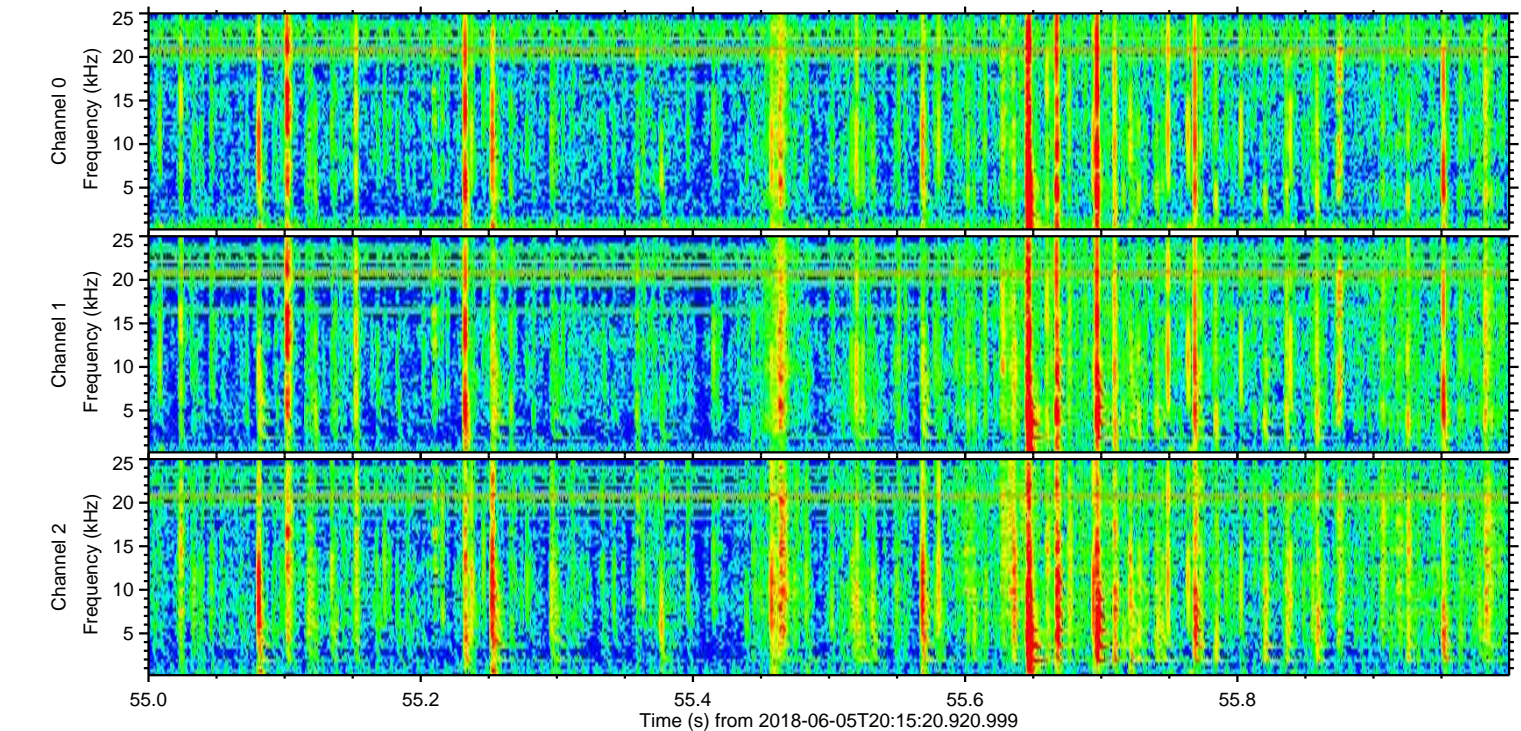
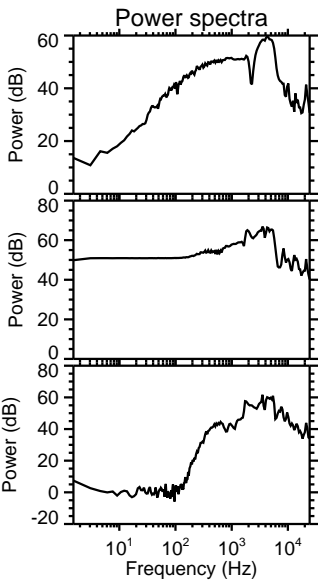
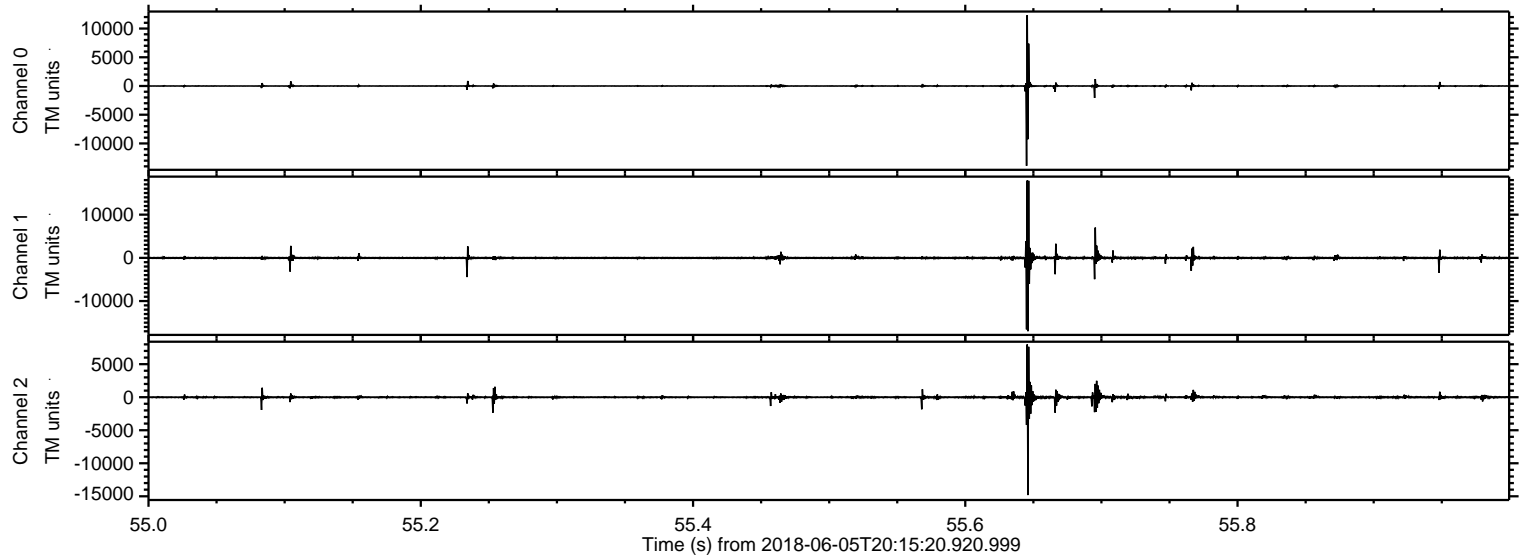
Processed Tue Jun 5 22:23:27 2018 by ELM ver.2012-10-06 from 001__elm20180605_201519__dat00.bin



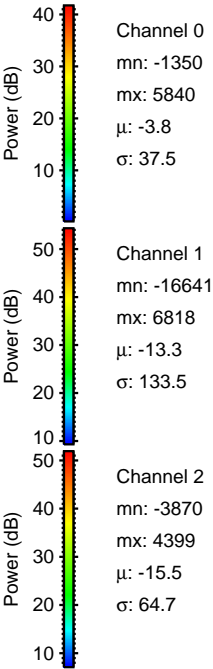
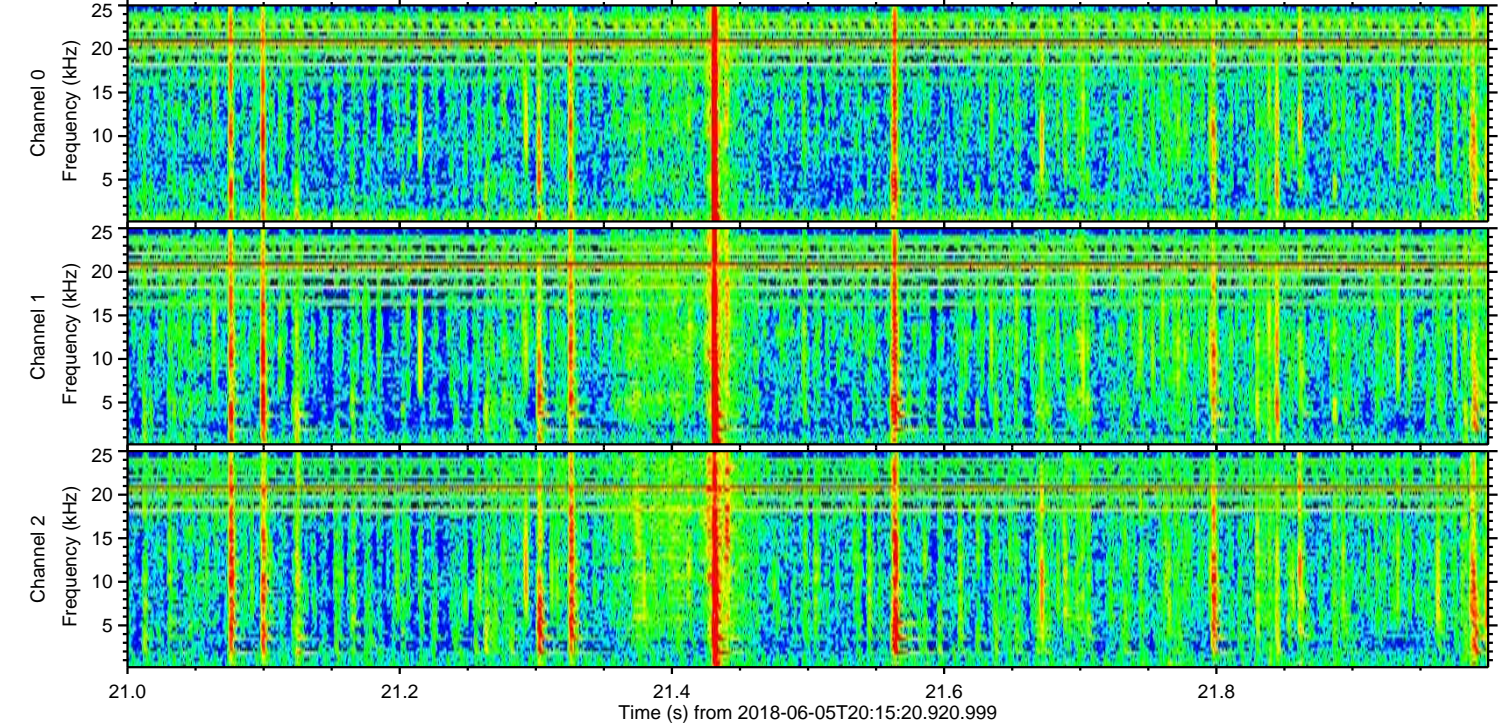
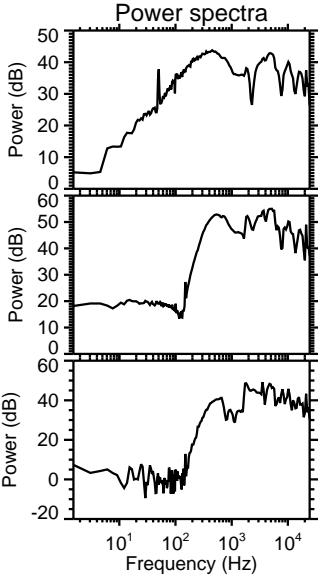
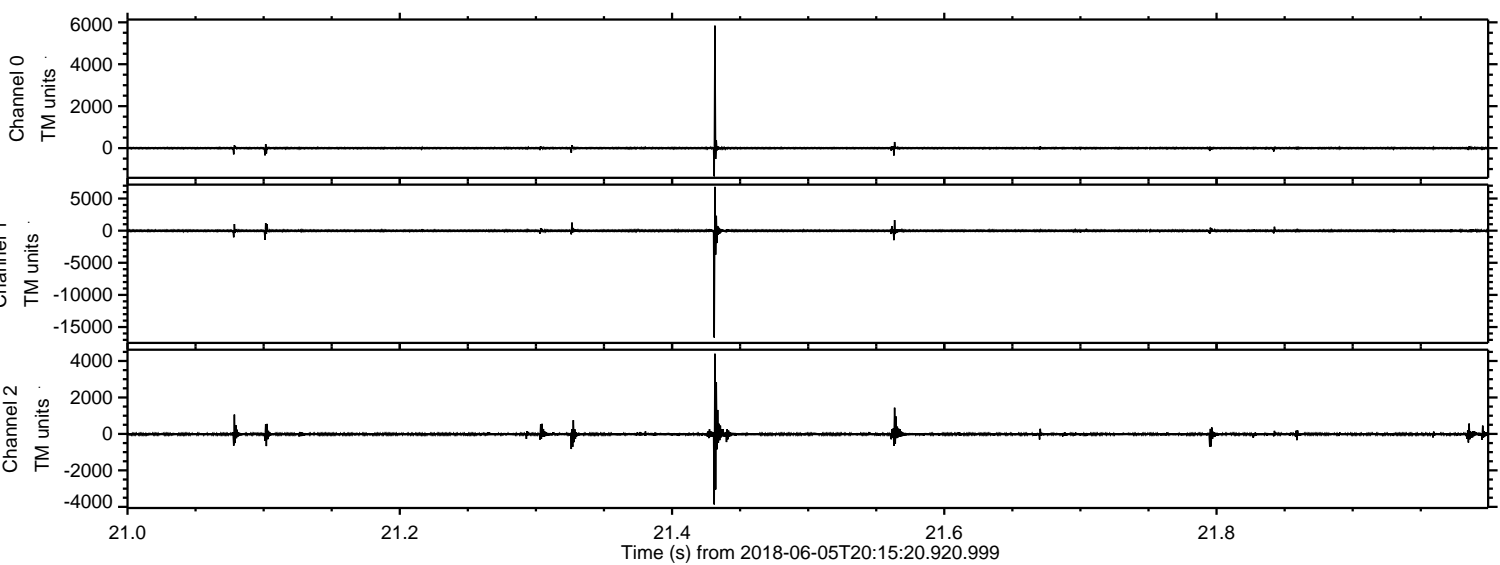
Processed Tue Jun 5 22:23:33 2018 by ELM ver.2012-10-06 from 001__elm20180605_201519__dat00.bin



Processed Tue Jun 5 22:23:34 2018 by ELM ver.2012-10-06 from 001__elm20180605_201519__dat00.bin

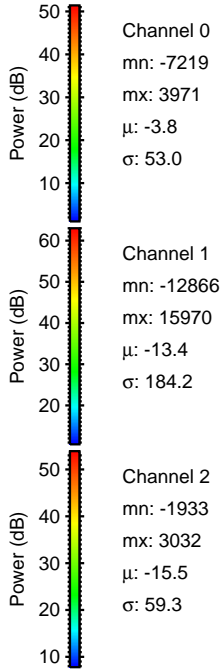
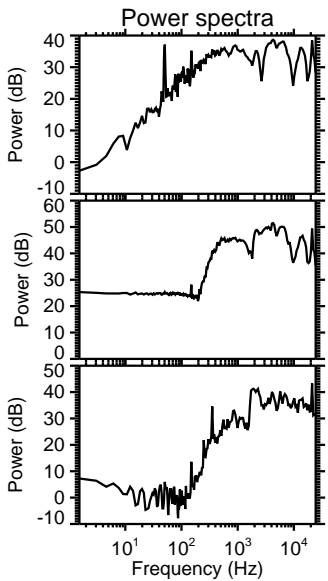
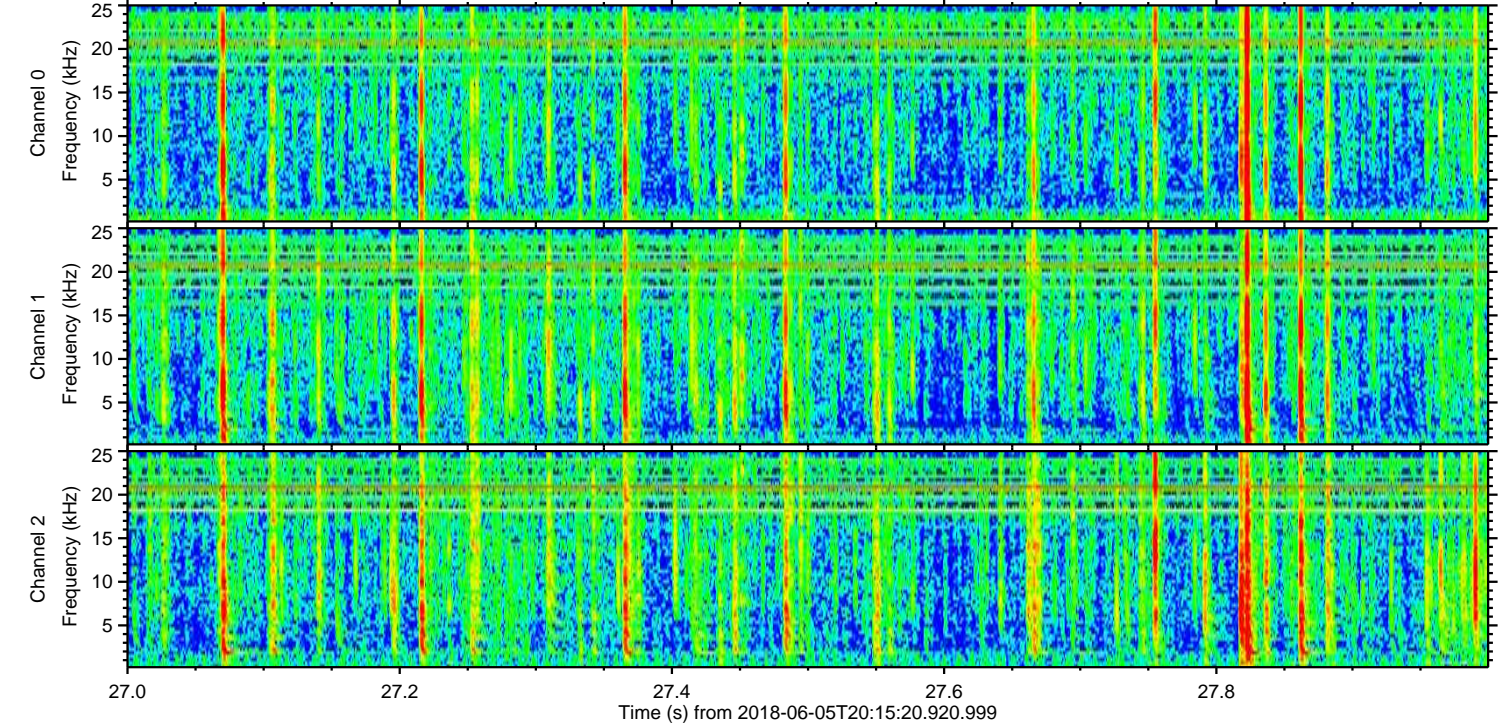
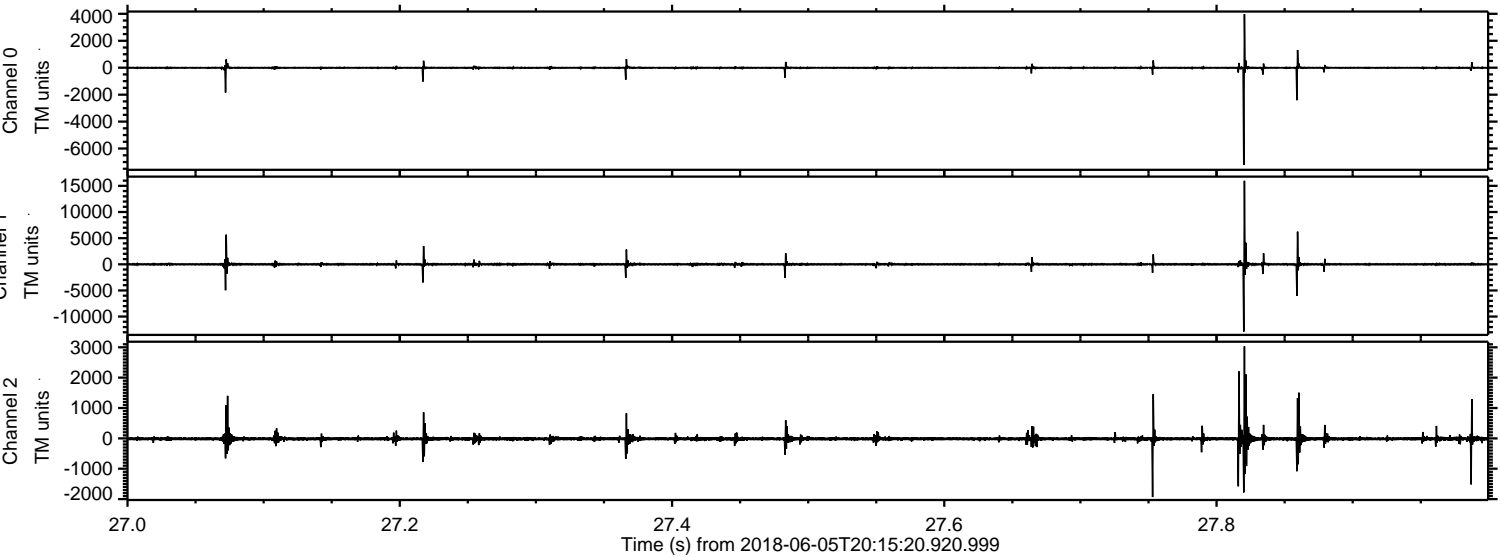


Processed Tue Jun 5 22:23:34 2018 by ELM ver.2012-10-06 from 001__elm20180605_201519__dat00.bin

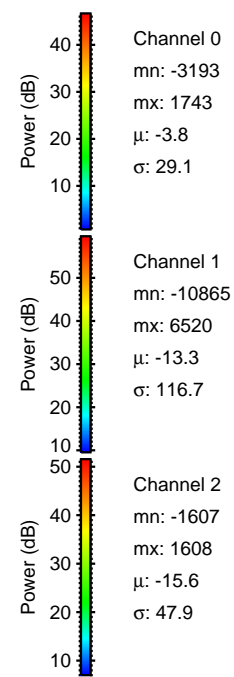
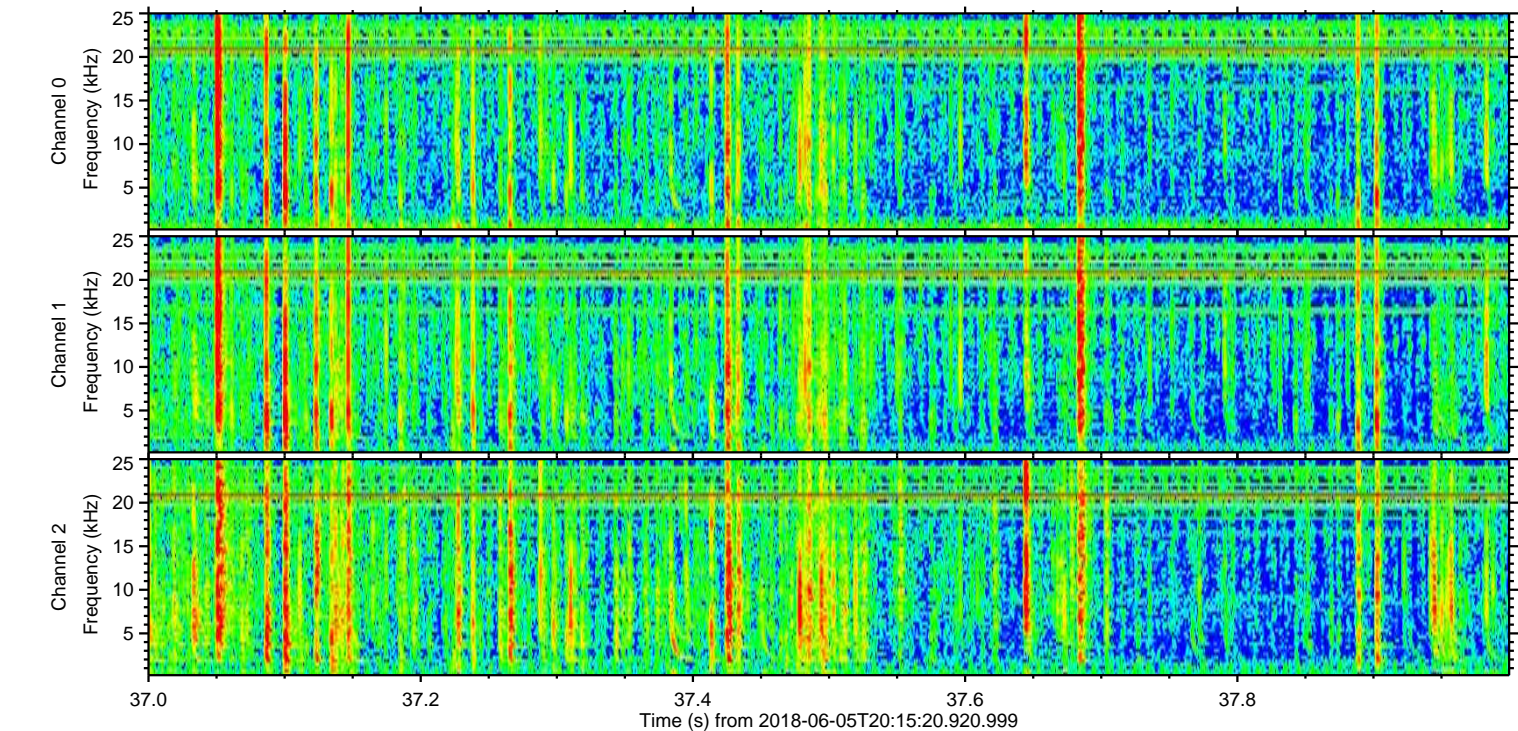
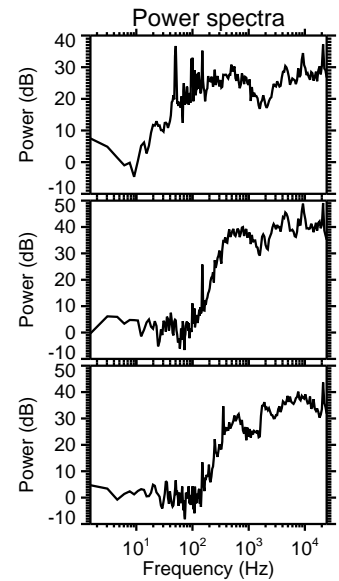
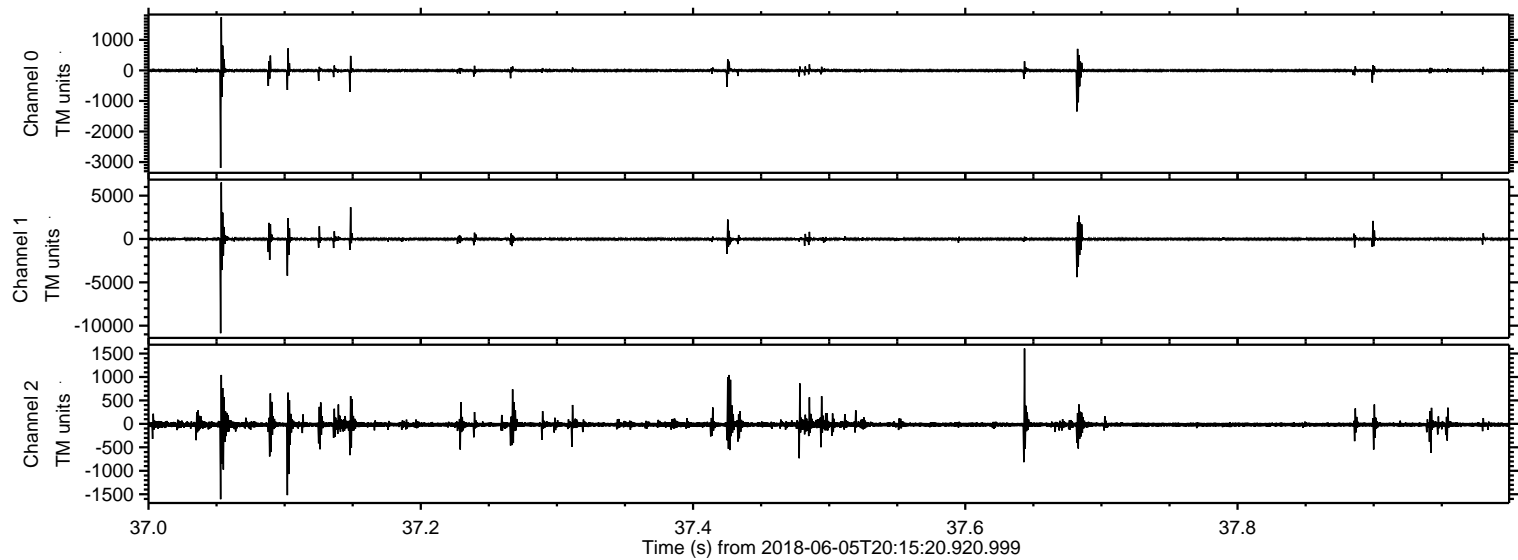


ELMAVAN 3D WAVEFORMS (Measured data sampled at 50 kHz) 51000 packets of 144 samples from 2018-06-05T20:15:20.920.999. Part 28/147

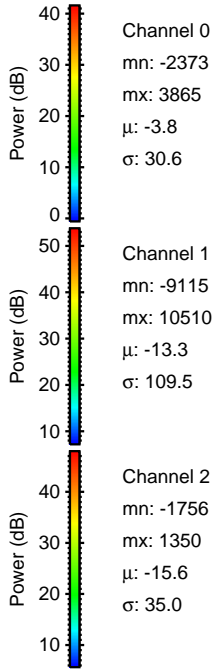
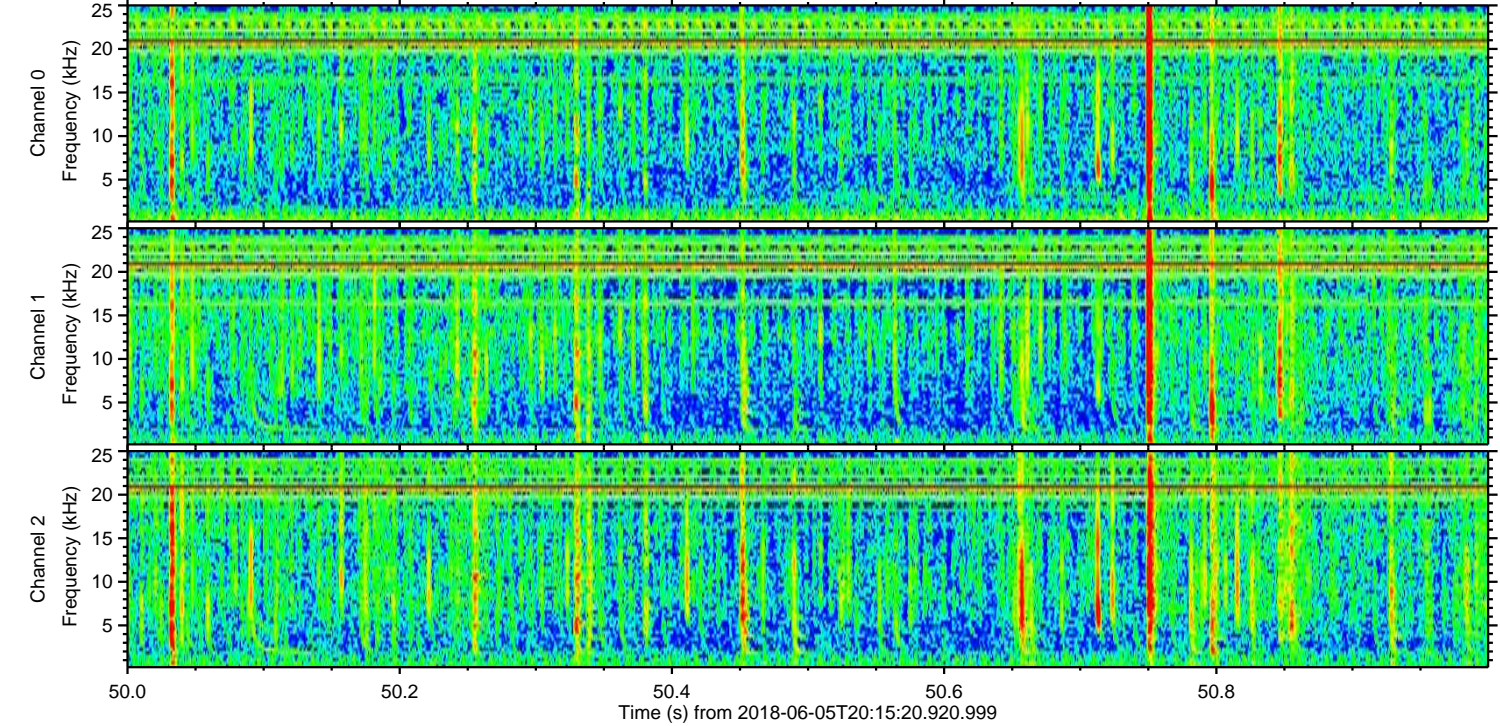
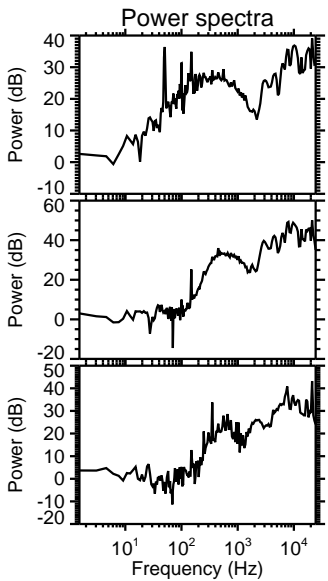
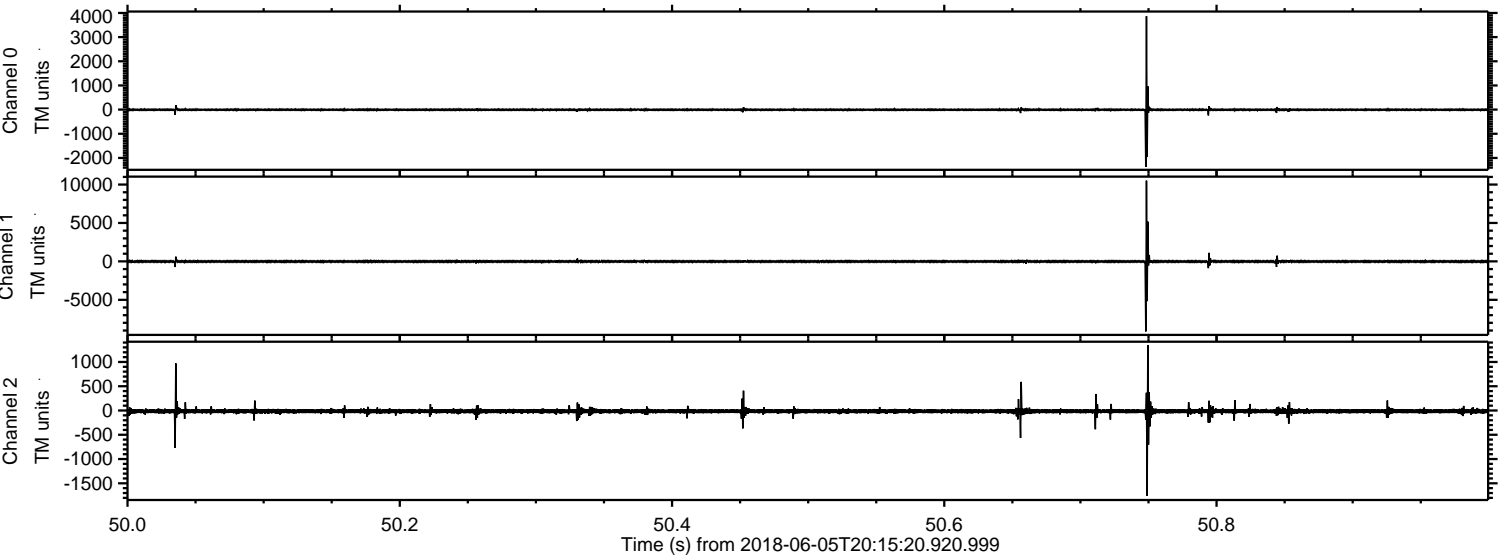
Processed Tue Jun 5 22:23:35 2018 by ELM ver.2012-10-06 from 001__elm20180605_201519__dat00.bin



Processed Tue Jun 5 22:23:36 2018 by ELM ver.2012-10-06 from 001__elm20180605_201519__dat00.bin

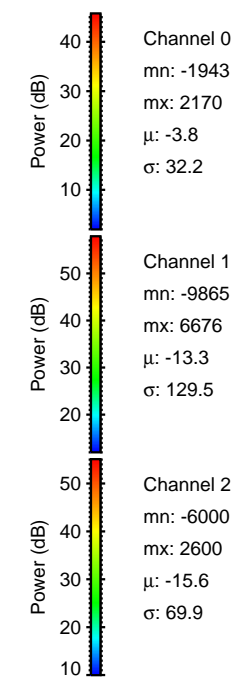
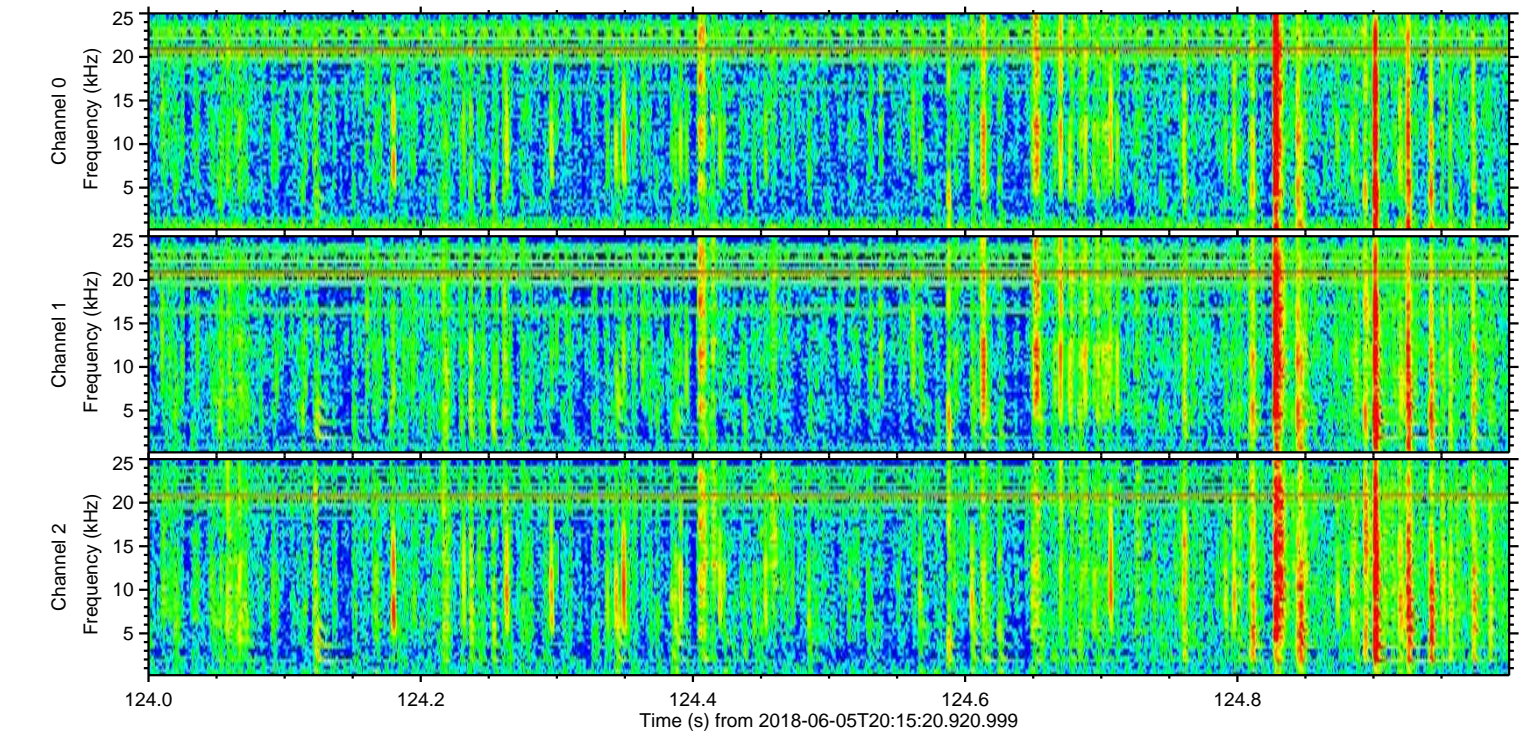
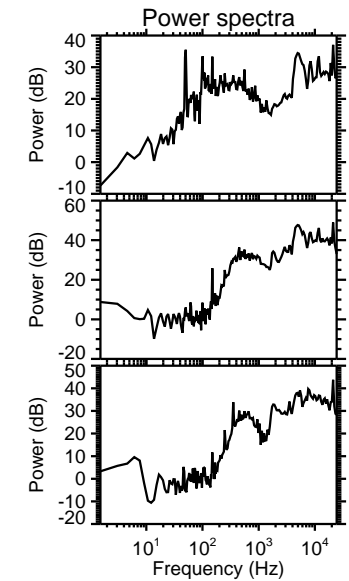
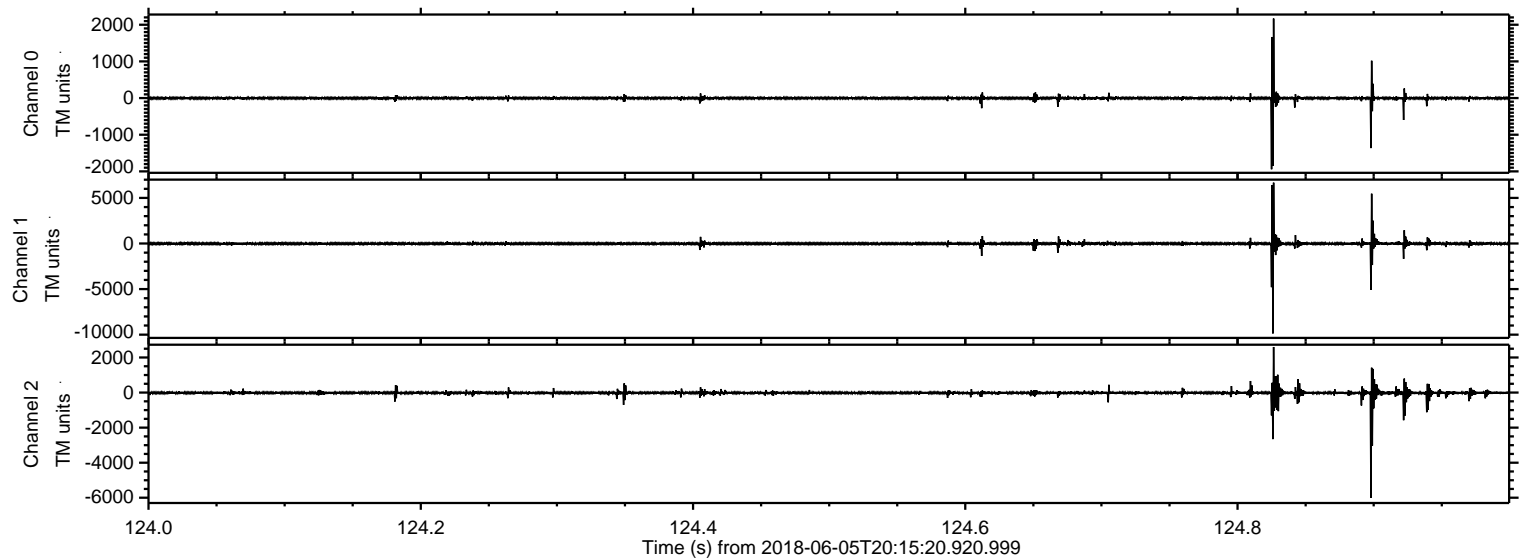


Processed Tue Jun 5 22:23:36 2018 by ELM ver.2012-10-06 from 001__elm20180605_201519__dat00.bin



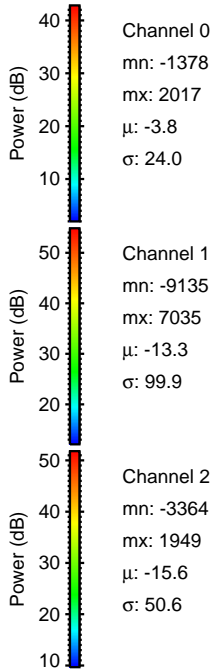
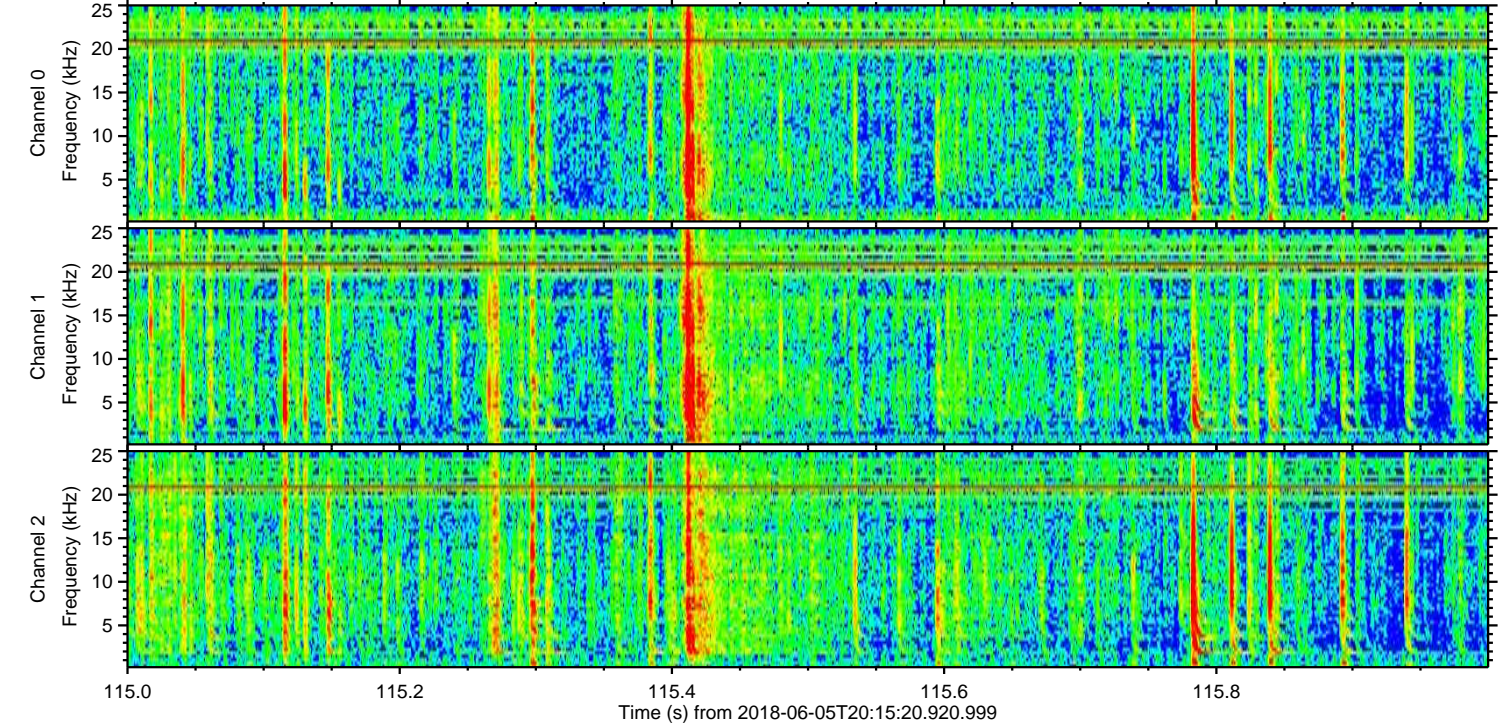
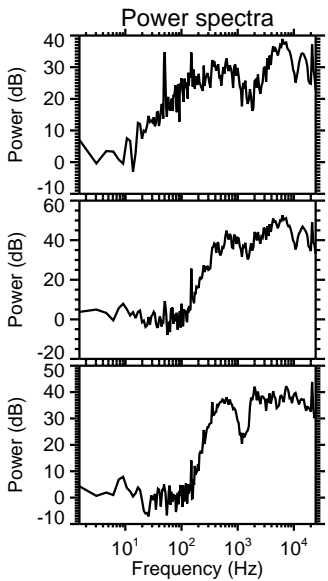
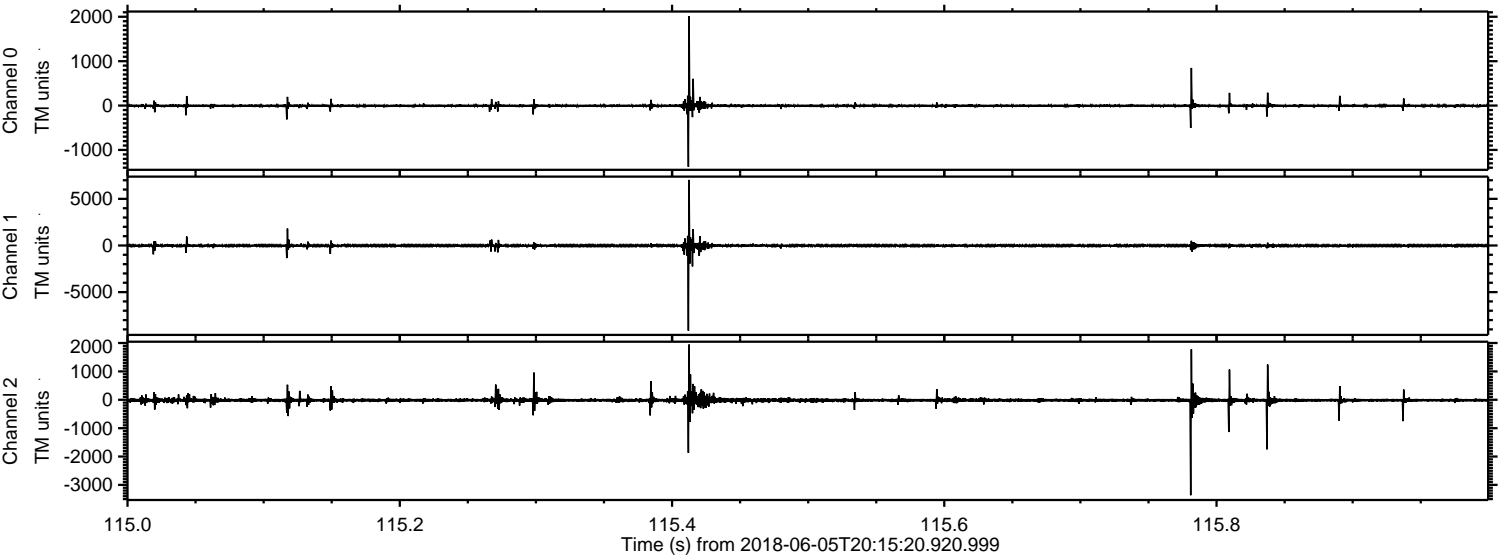
ELMAVAN 3D WAVEFORMS (Measured data sampled at 50 kHz) 51000 packets of 144 samples from 2018-06-05T20:15:20.920.999. Part 125/147

Processed Tue Jun 5 22:23:37 2018 by ELM ver.2012-10-06 from 001__elm20180605_201519__dat00.bin



ELMAVAN 3D WAVEFORMS (Measured data sampled at 50 kHz) 51000 packets of 144 samples from 2018-06-05T20:15:20.920.999. Part 116/147

Processed Tue Jun 5 22:23:38 2018 by ELM ver.2012-10-06 from 001__elm20180605_201519__dat00.bin

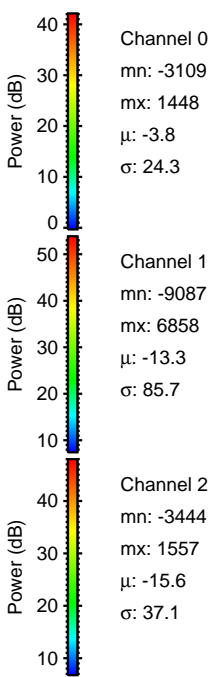
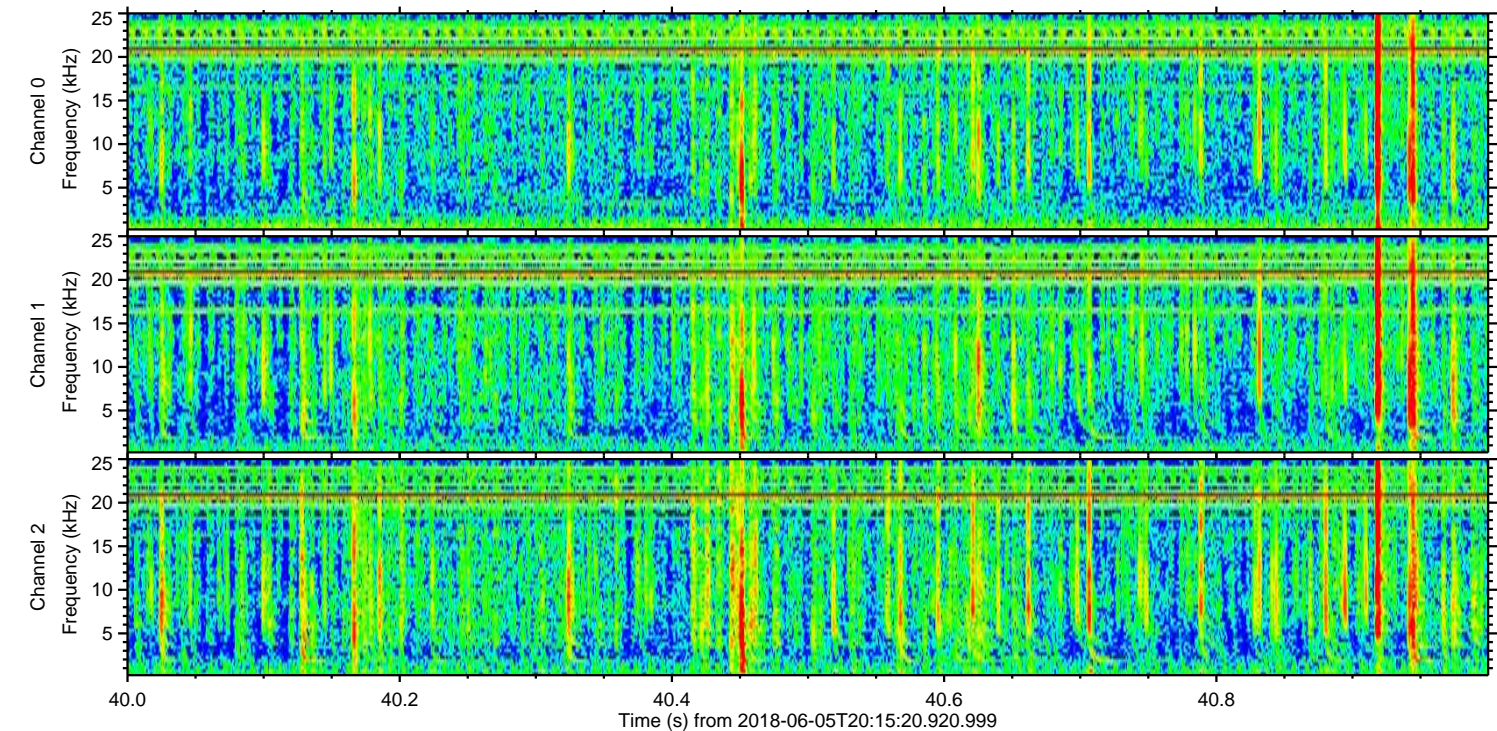
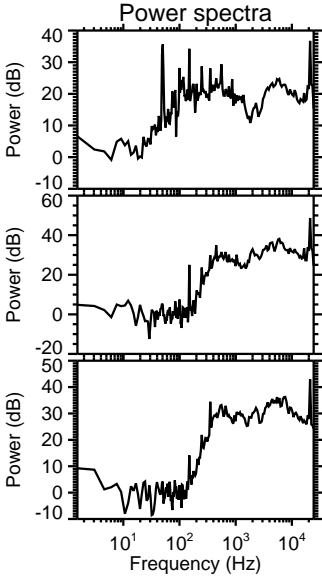
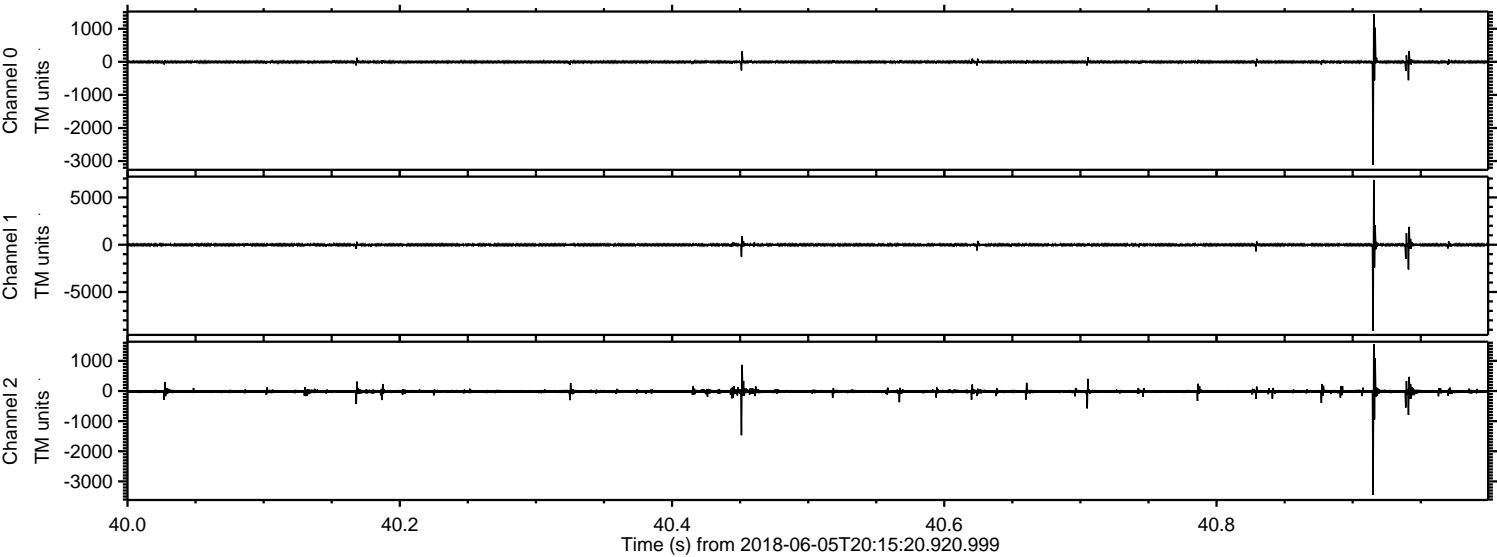


Channel 0
mn: -1378
mx: 2017
 μ : -3.8
 σ : 24.0

Channel 1
mn: -9135
mx: 7035
 μ : -13.3
 σ : 99.9

Channel 2
mn: -3364
mx: 1949
 μ : -15.6
 σ : 50.6

Processed Tue Jun 5 22:23:38 2018 by ELM ver.2012-10-06 from 001__elm20180605_201519__dat00.bin



Processed Tue Jun 5 22:23:39 2018 by ELM ver.2012-10-06 from 001__elm20180605_201519__dat00.bin

