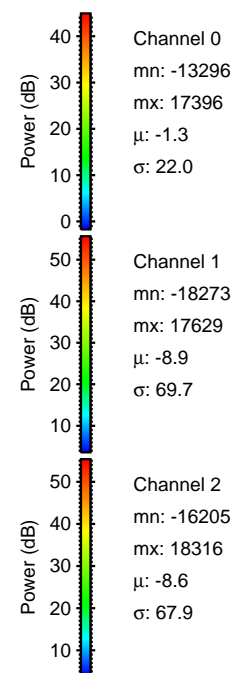
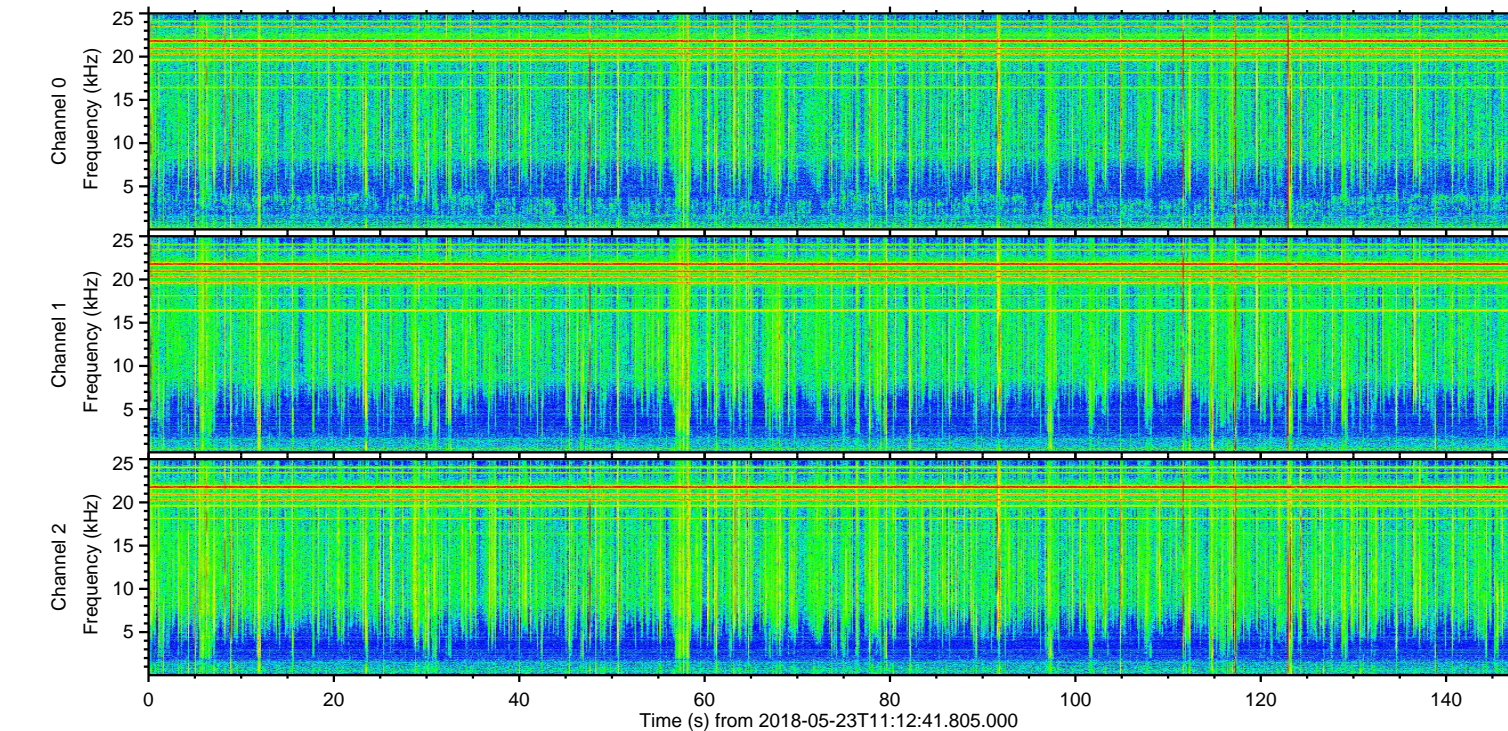
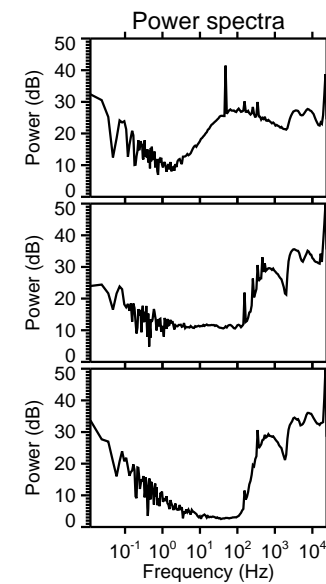
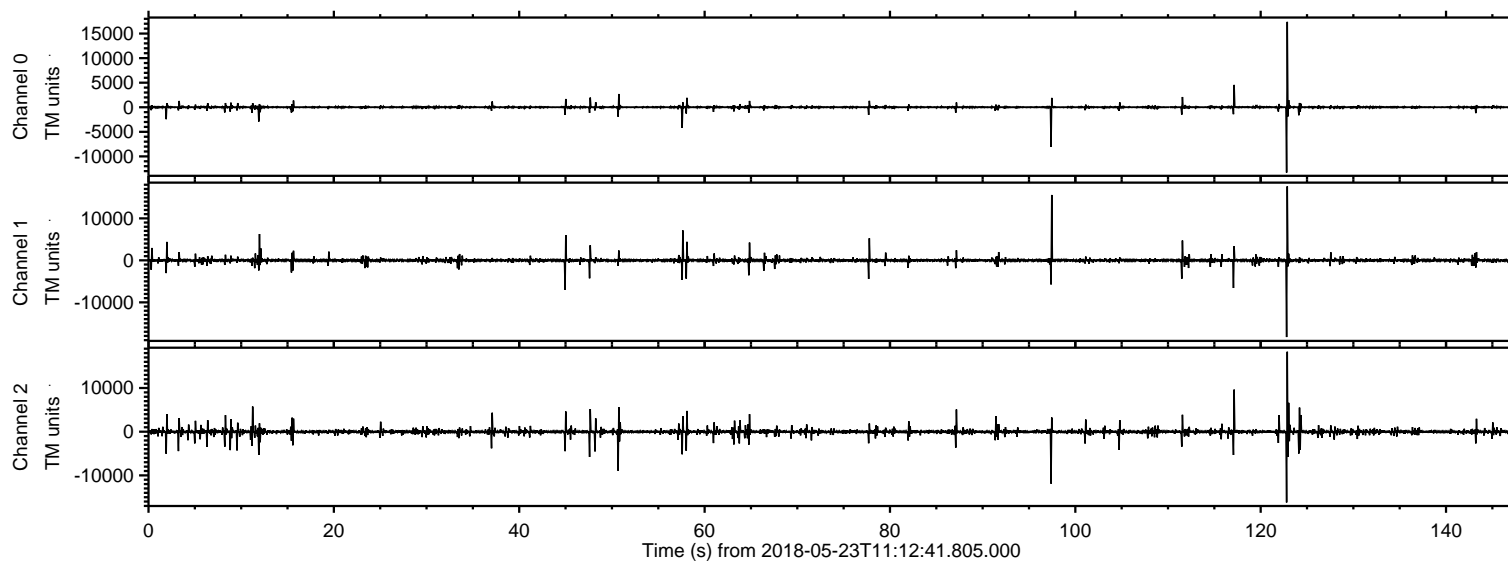


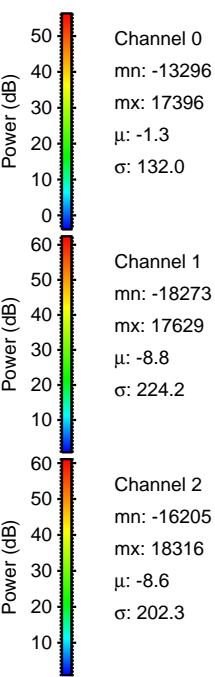
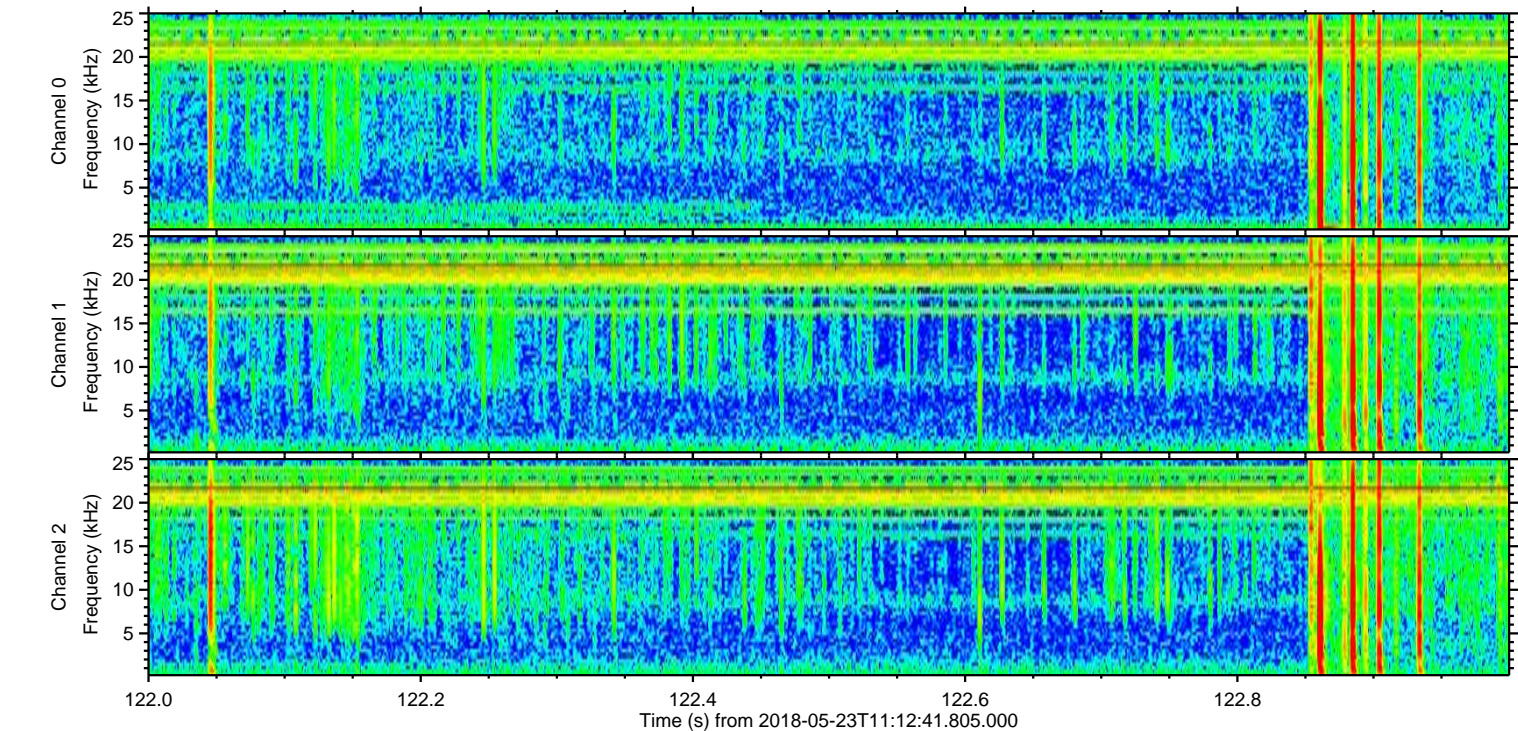
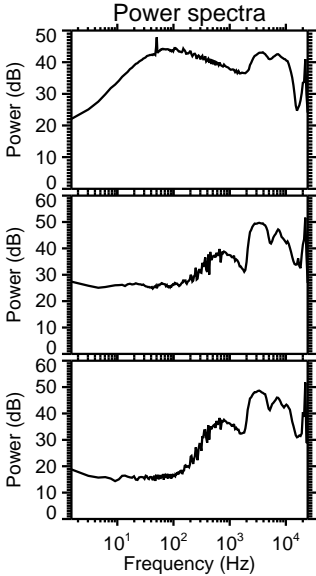
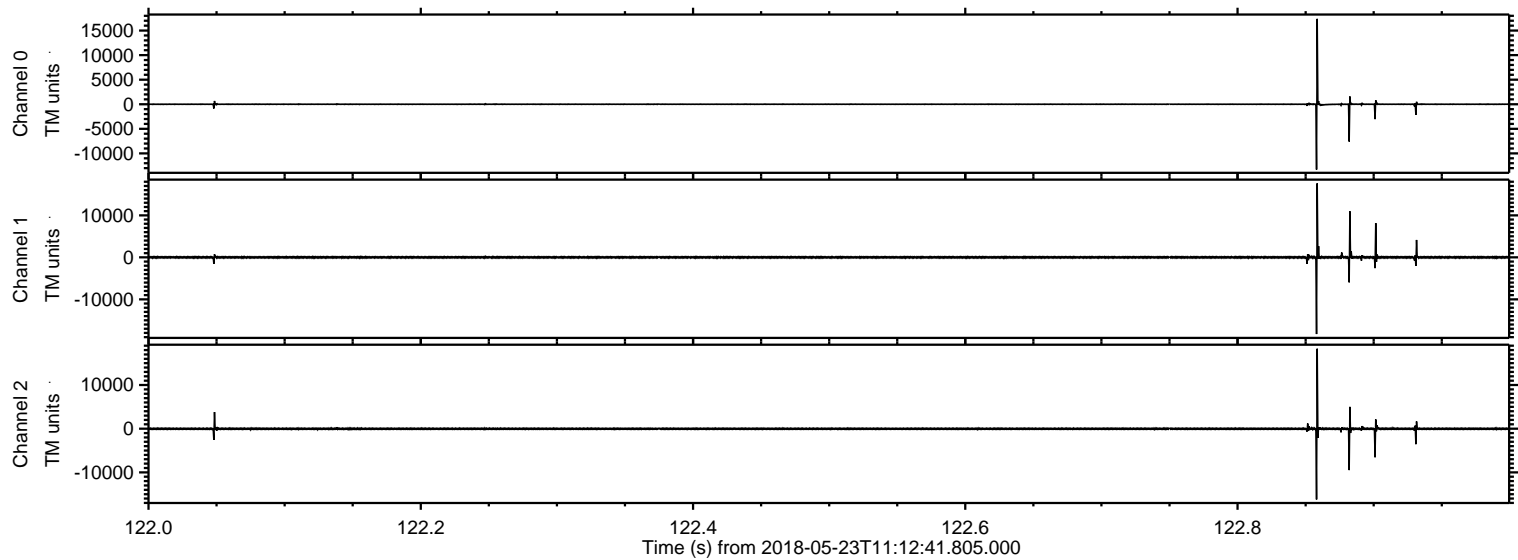
ELMAVAN 3D WAVEFORMS (Measured data sampled at 50 kHz) 51000 packets of 144 samples from 2018-05-23T11:12:41.805.000.

Processed Wed May 23 13:20:14 2018 by ELM ver.2012-10-06 from 001__elm20180523_111240__dat00.bin

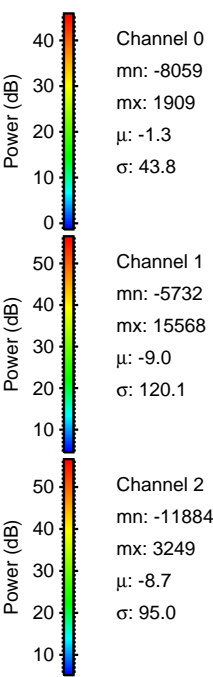
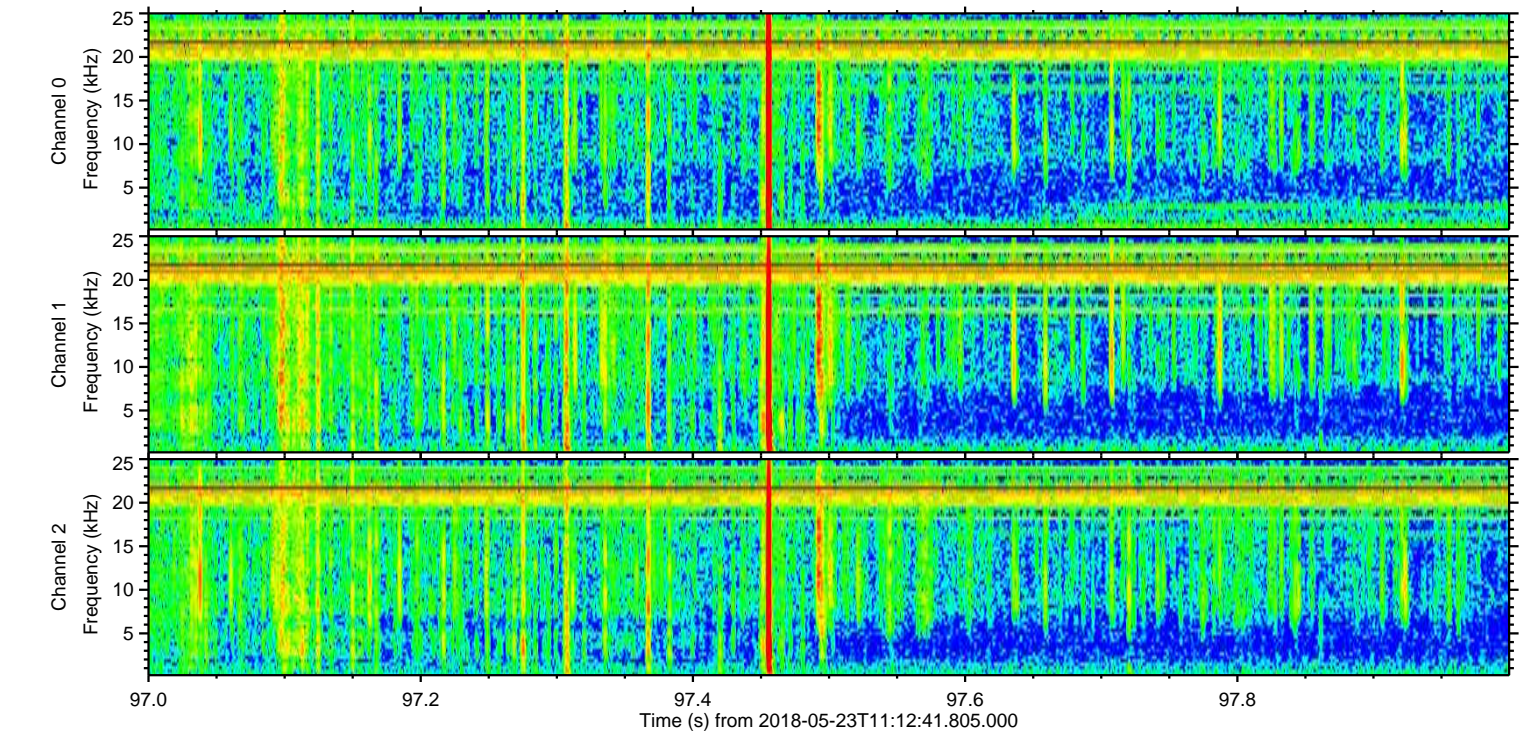
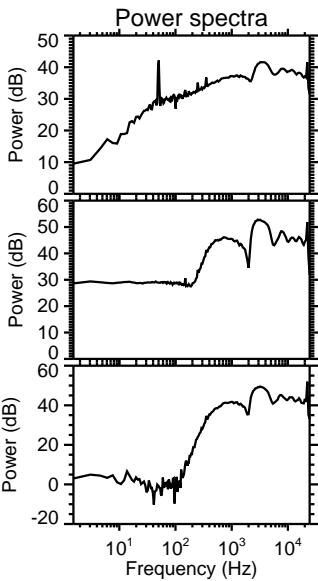
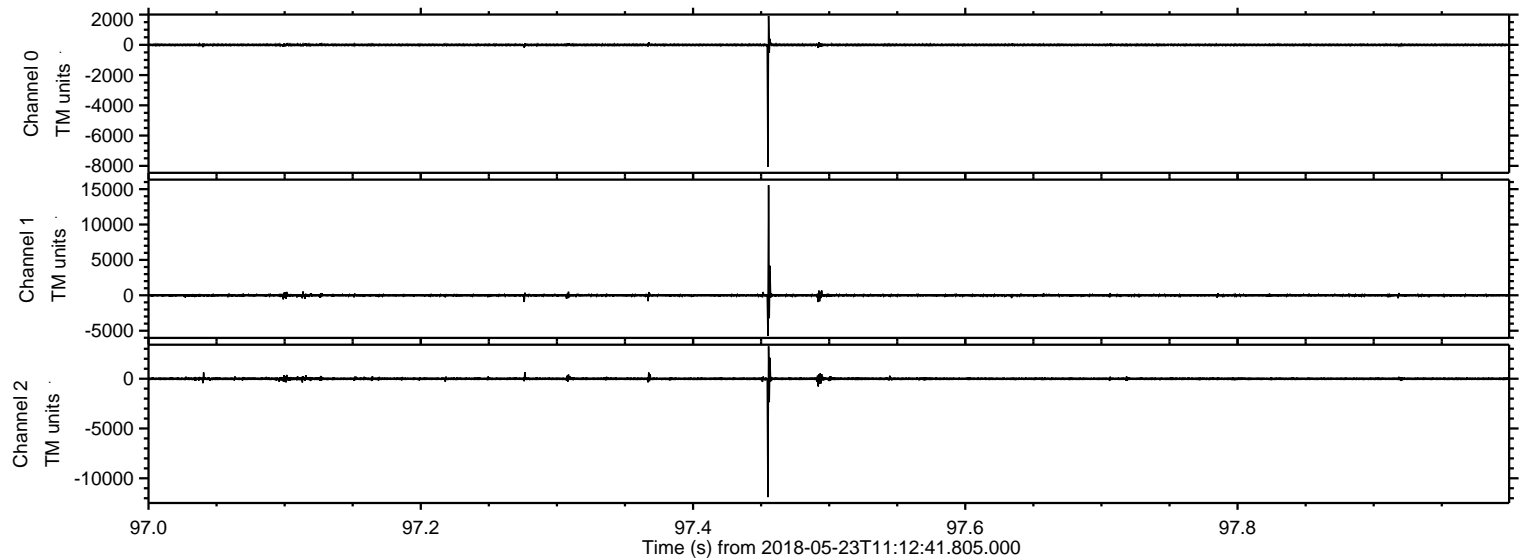


ELMAVAN 3D WAVEFORMS (Measured data sampled at 50 kHz) 51000 packets of 144 samples from 2018-05-23T11:12:41.805.000. Part 123/147

Processed Wed May 23 13:20:22 2018 by ELM ver.2012-10-06 from 001__elm20180523_111240__dat00.bin

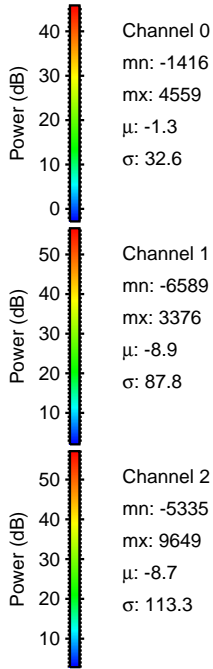
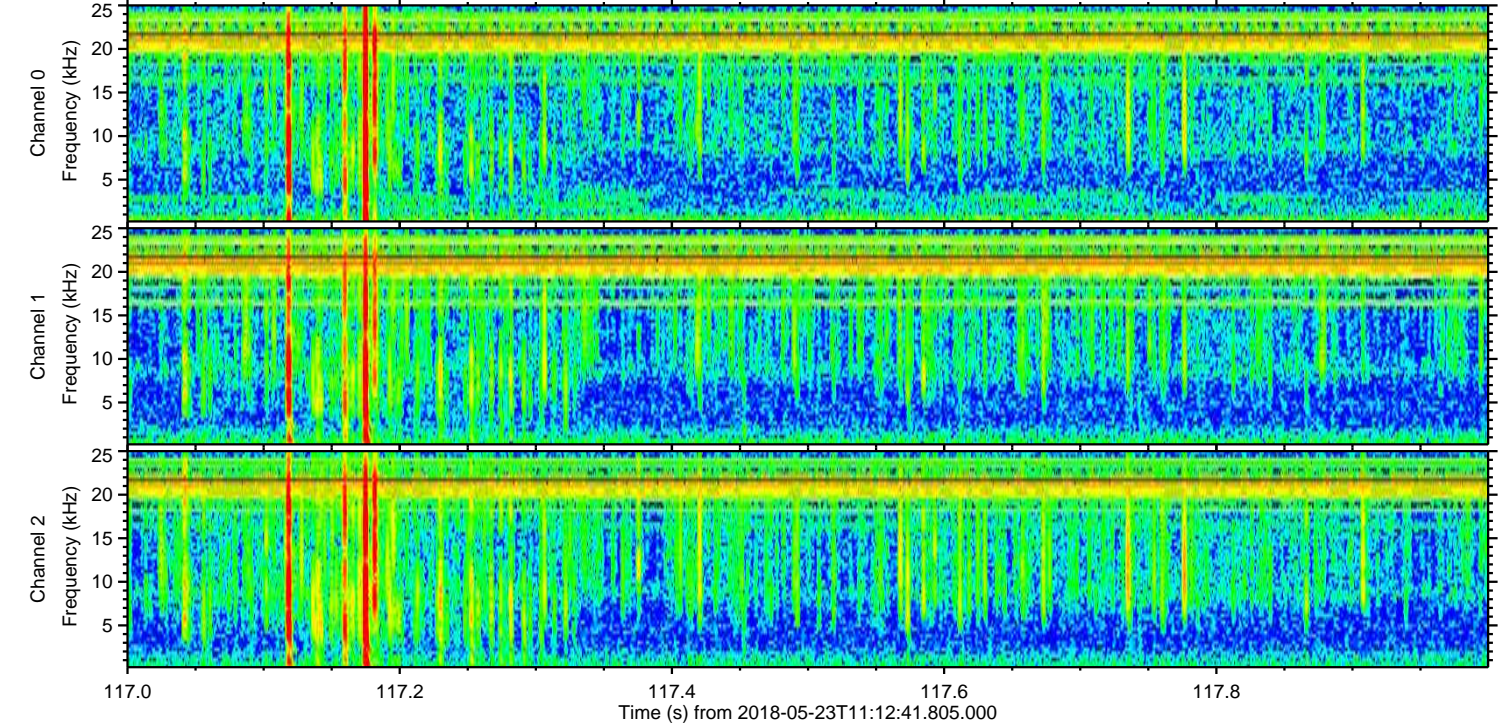
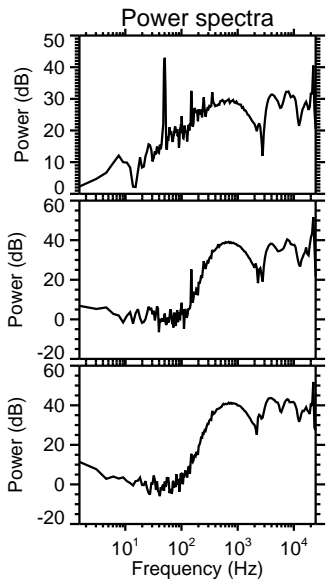
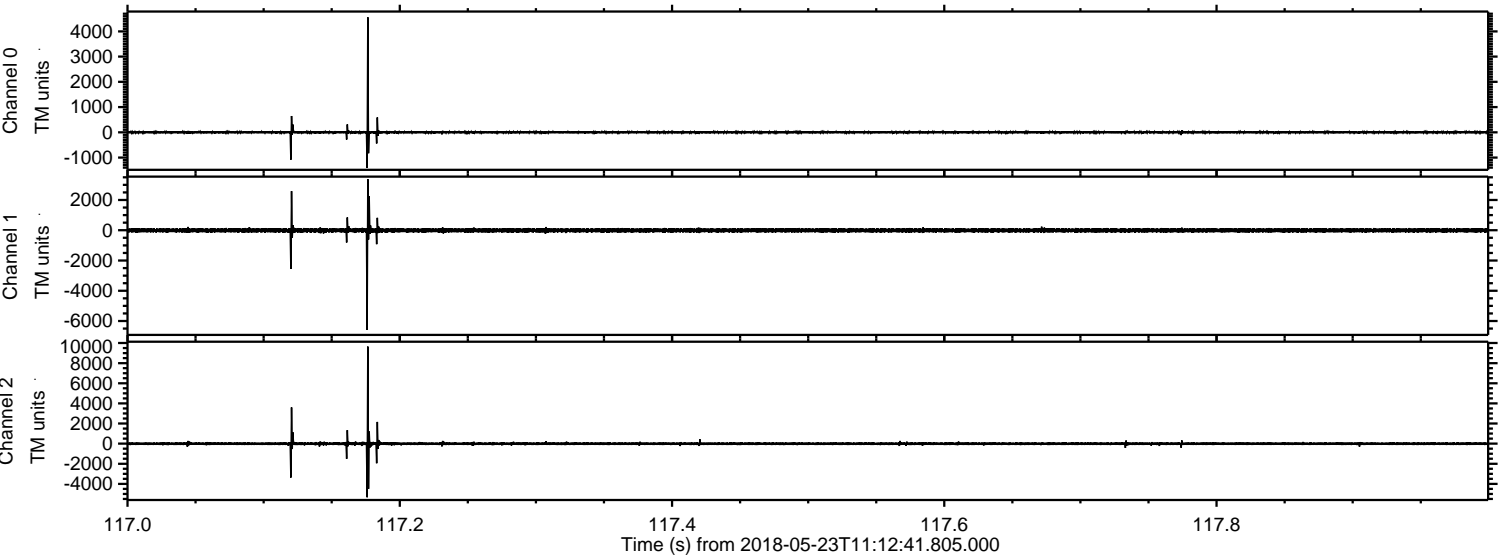


Processed Wed May 23 13:20:23 2018 by ELM ver.2012-10-06 from 001__elm20180523_111240__dat00.bin

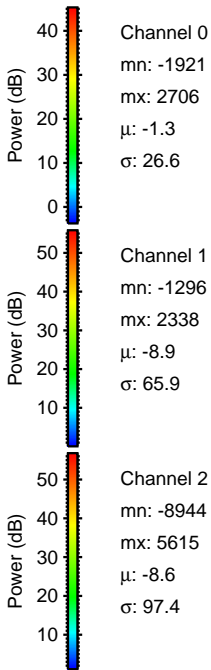
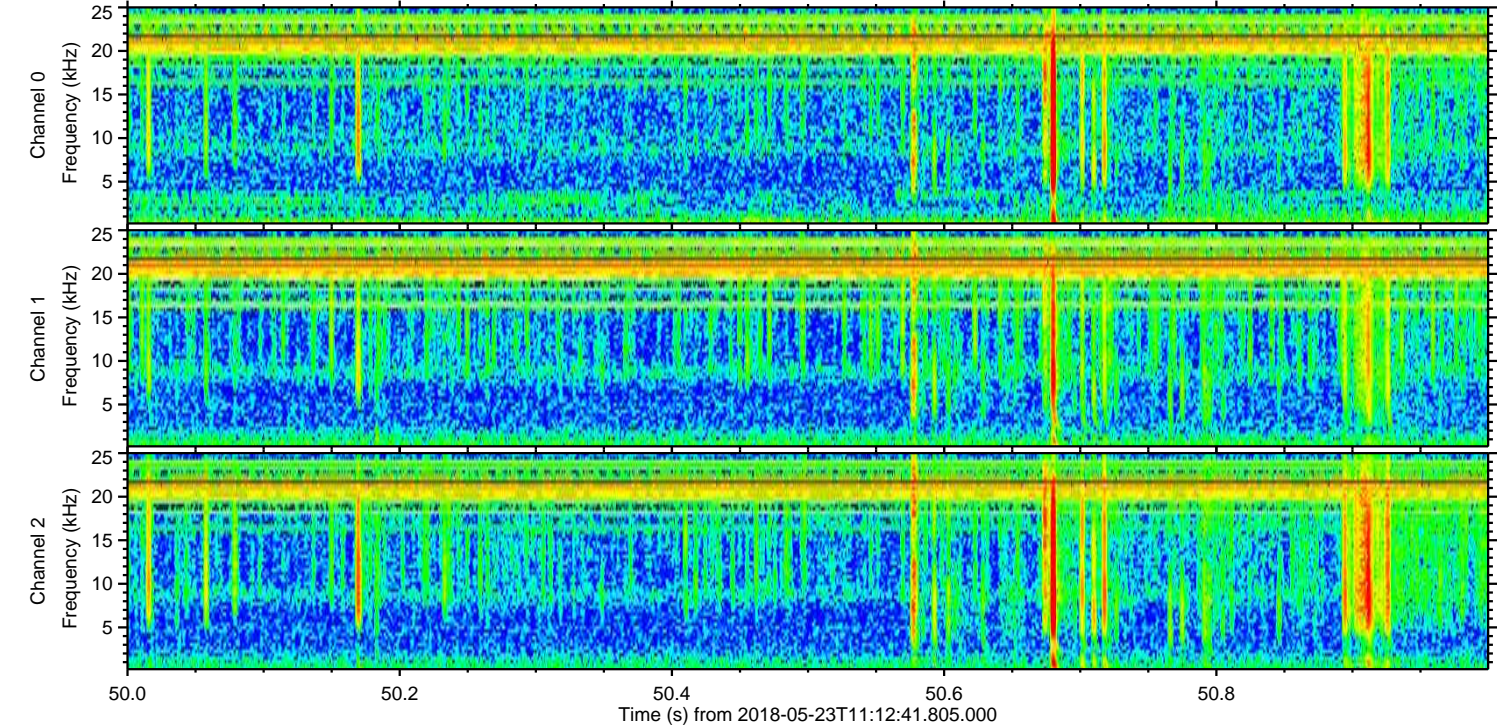
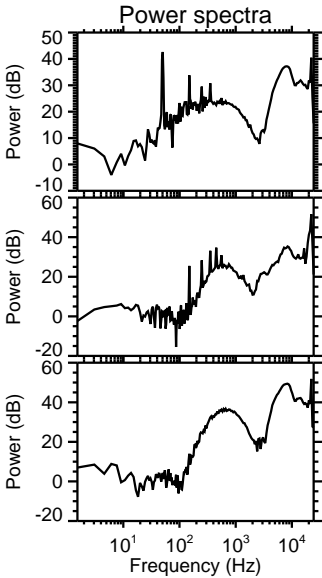
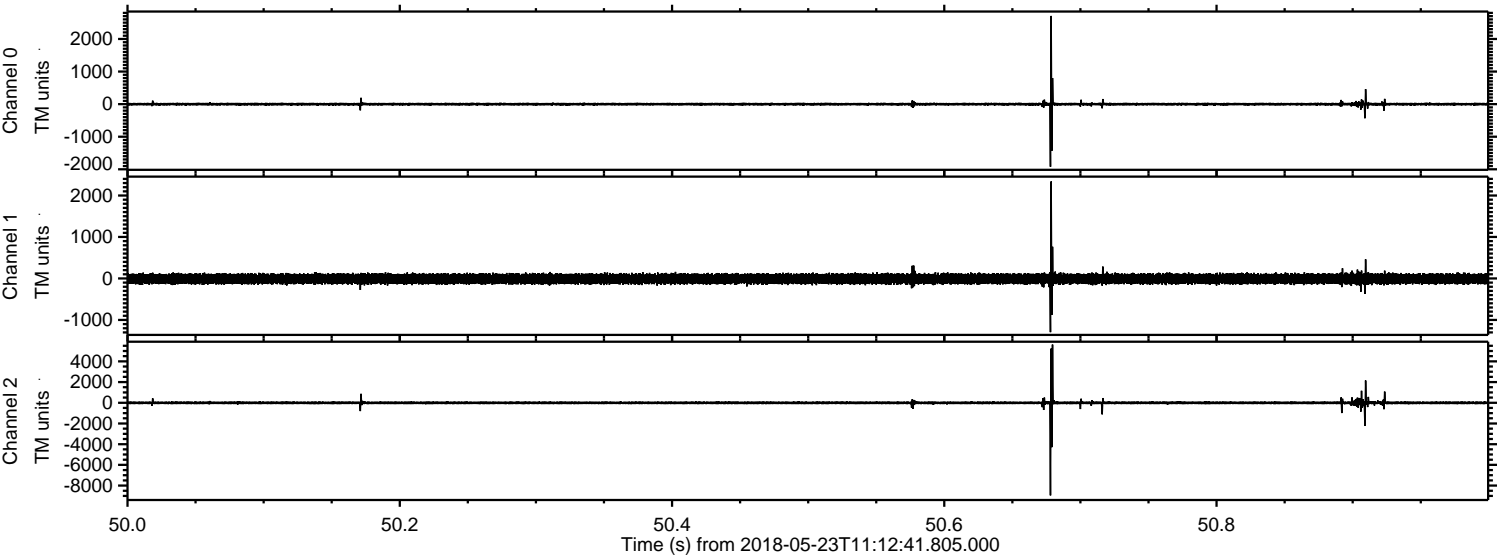


ELMAVAN 3D WAVEFORMS (Measured data sampled at 50 kHz) 51000 packets of 144 samples from 2018-05-23T11:12:41.805.000. Part 118/147

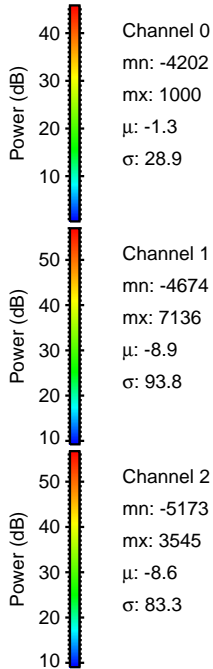
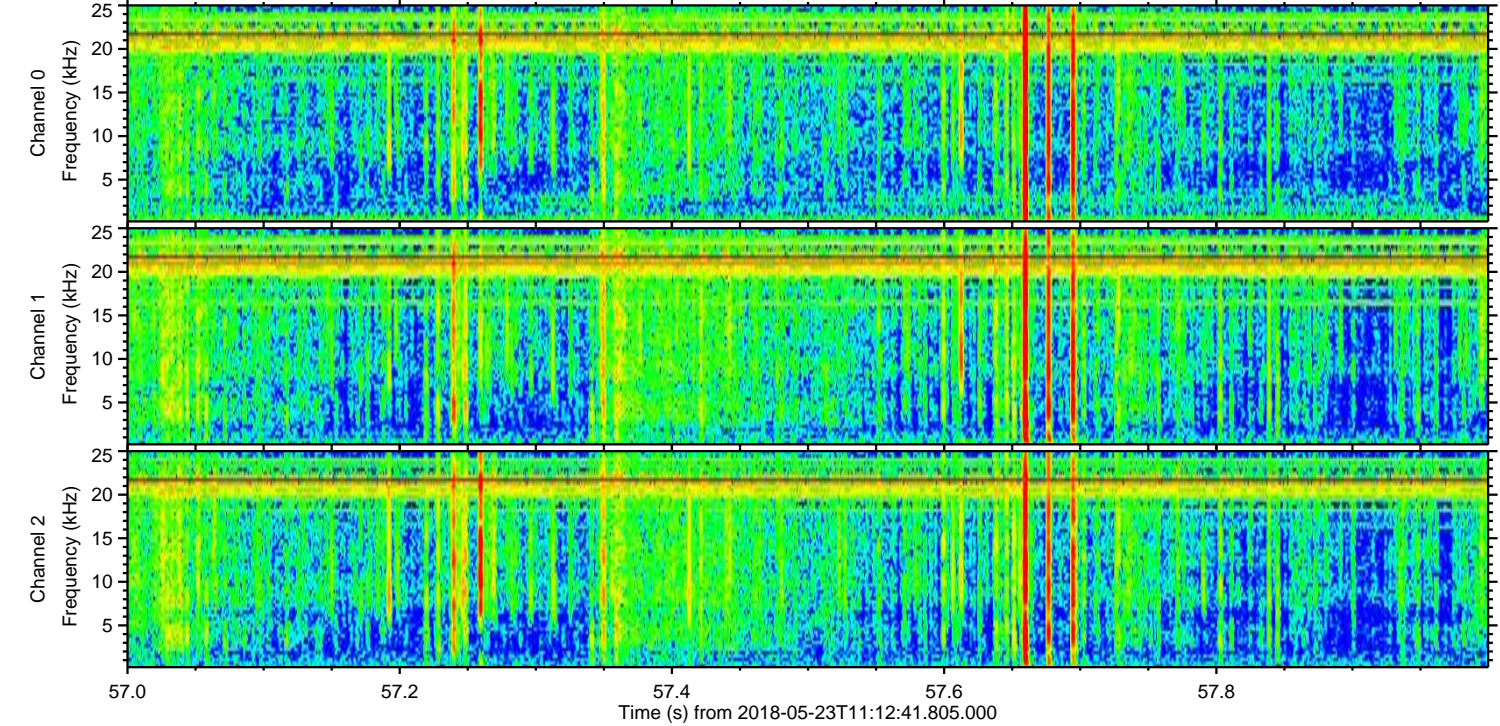
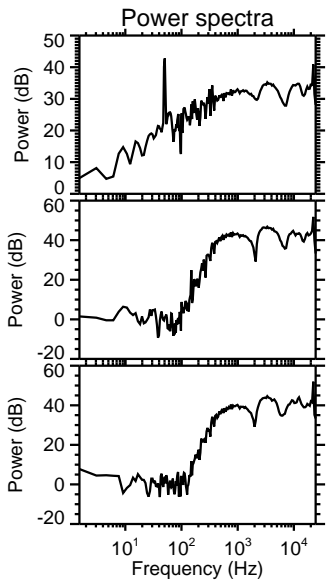
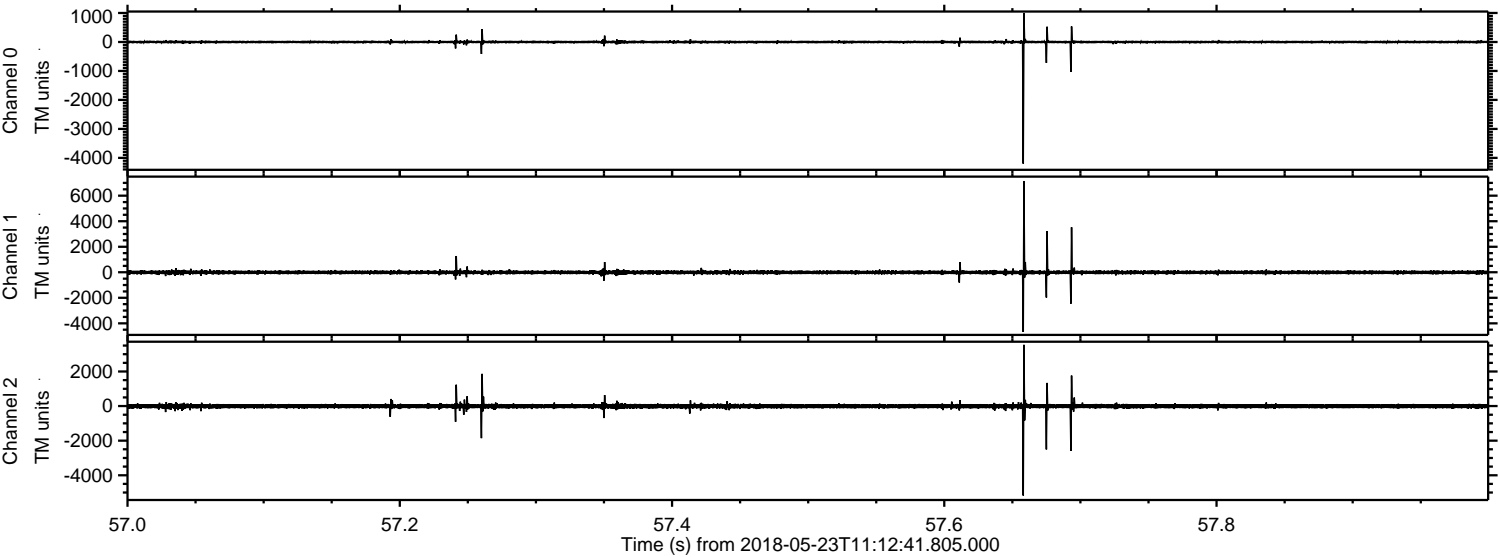
Processed Wed May 23 13:20:23 2018 by ELM ver.2012-10-06 from 001__elm20180523_111240__dat00.bin



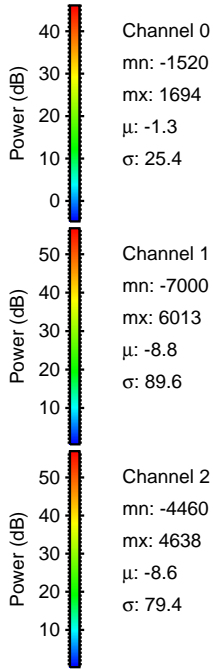
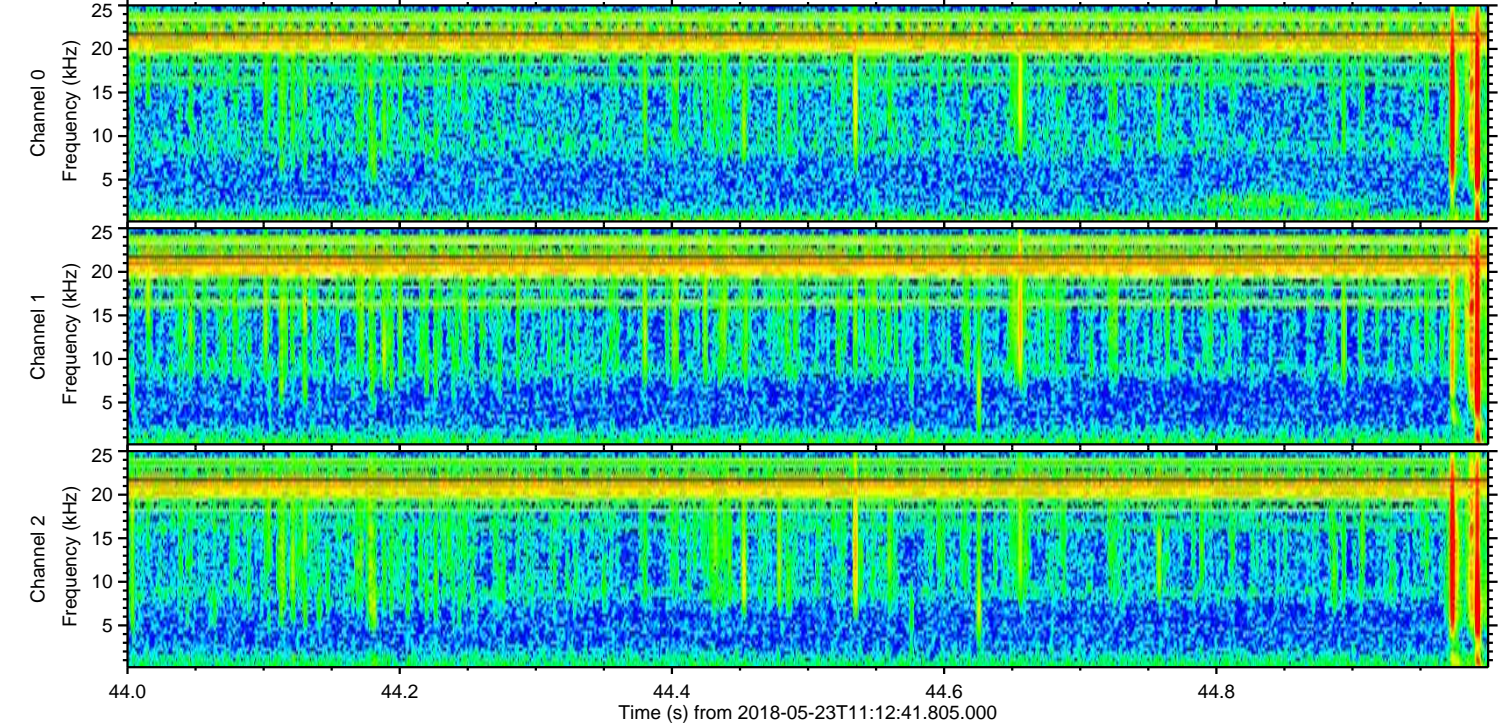
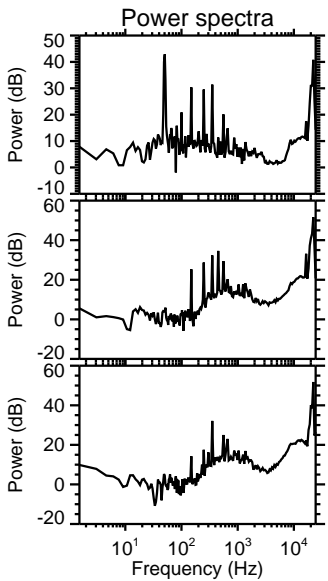
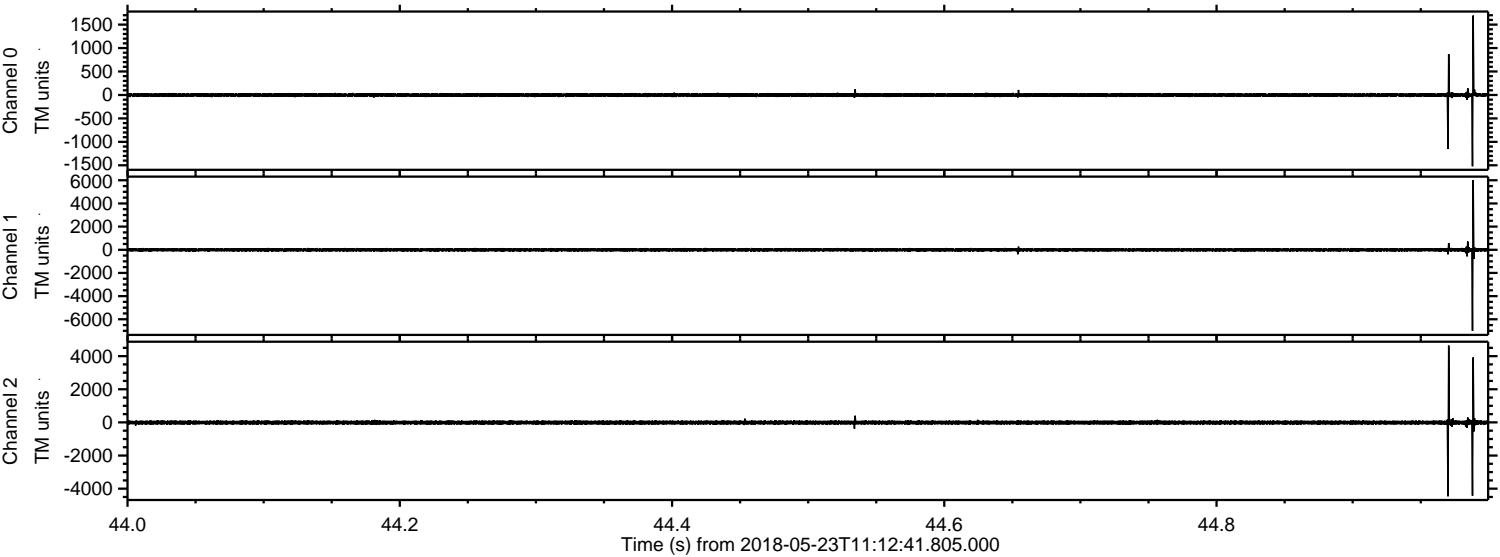
Processed Wed May 23 13:20:24 2018 by ELM ver.2012-10-06 from 001__elm20180523_111240__dat00.bin



Processed Wed May 23 13:20:25 2018 by ELM ver.2012-10-06 from 001__elm20180523_111240__dat00.bin

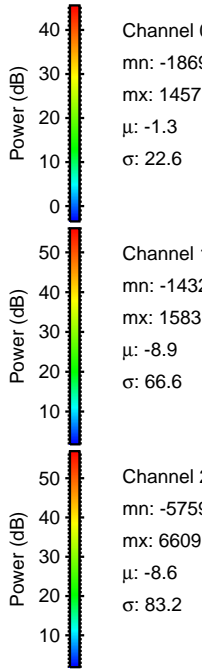
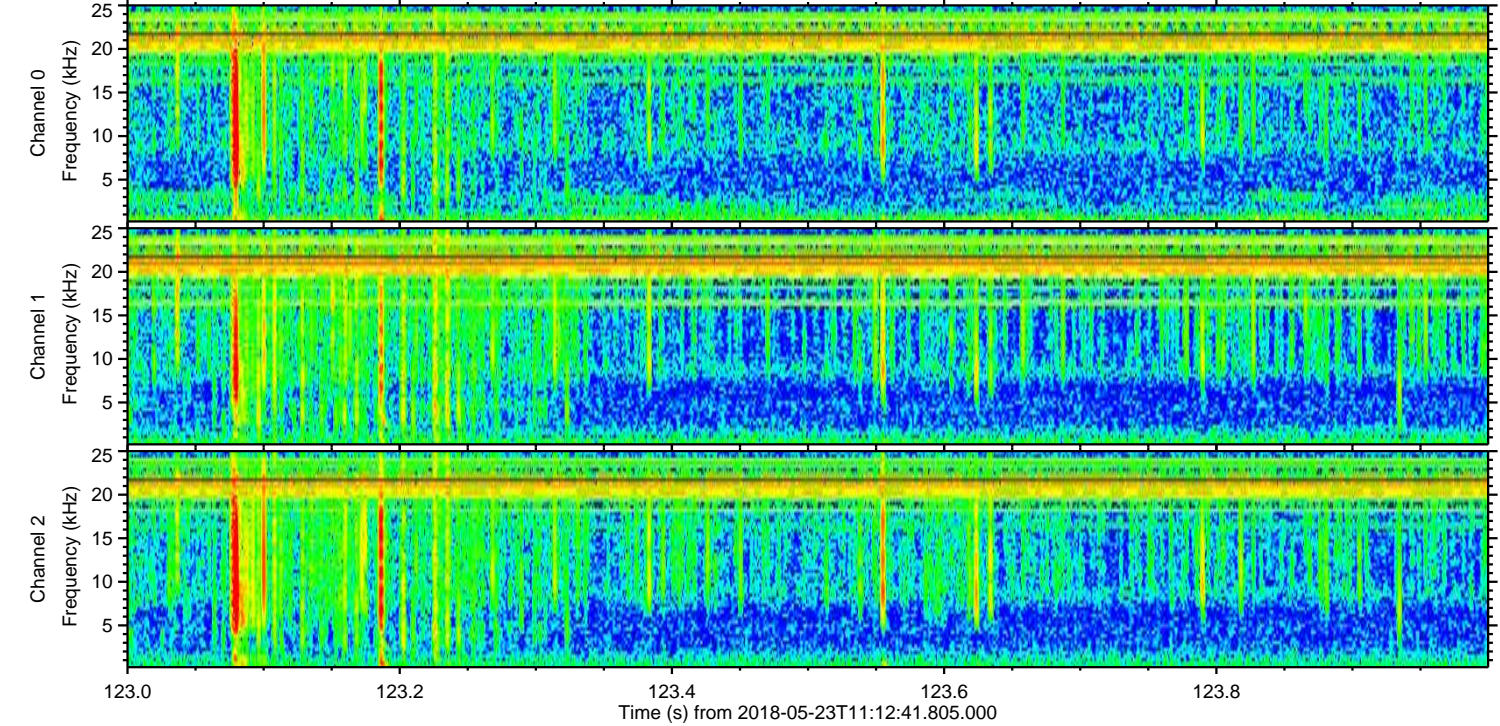
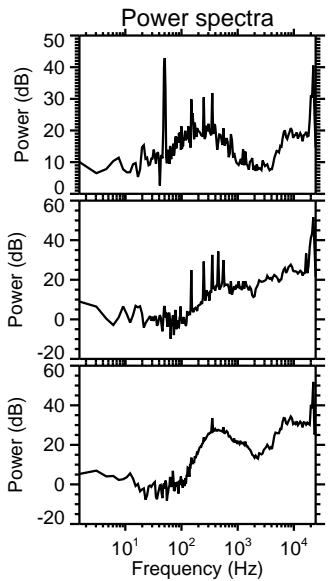
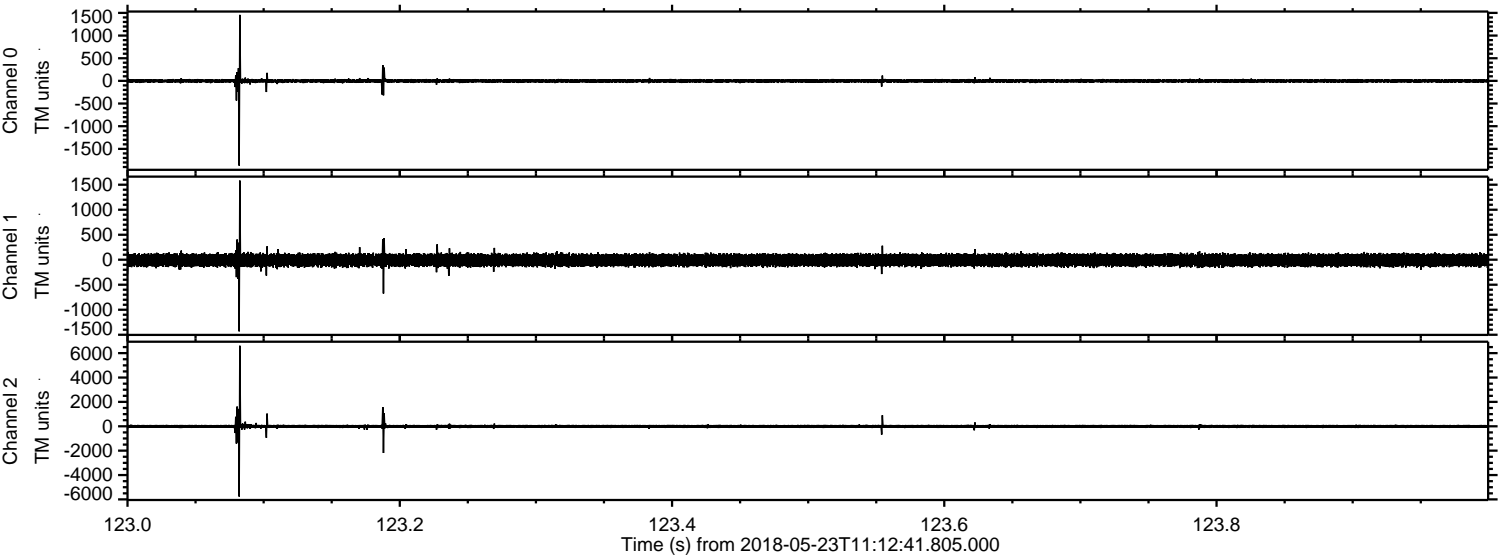


Processed Wed May 23 13:20:26 2018 by ELM ver.2012-10-06 from 001__elm20180523_111240__dat00.bin

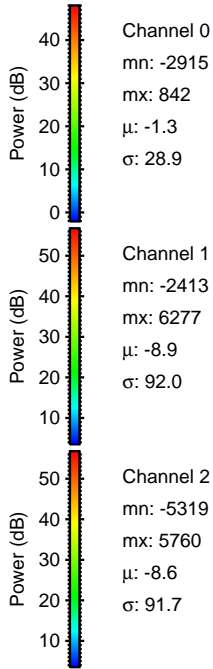
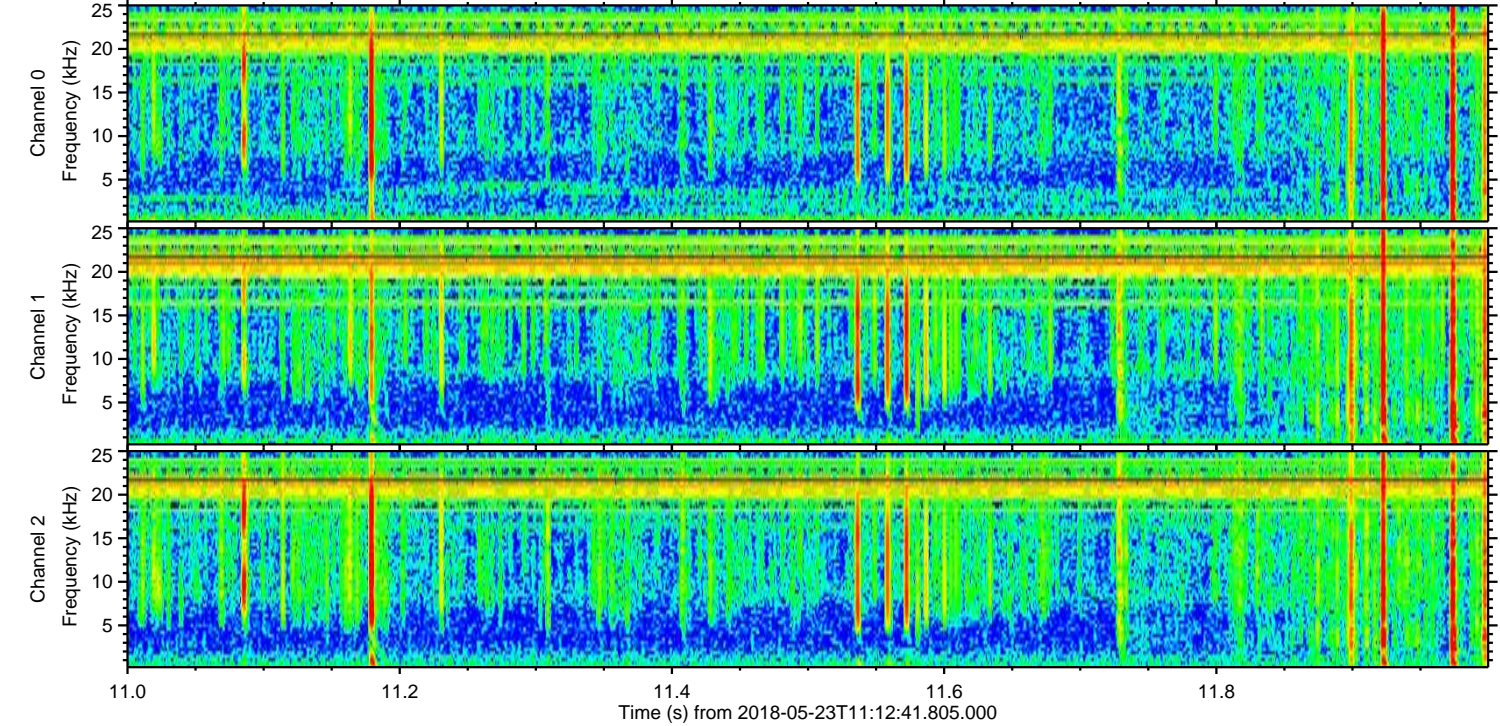
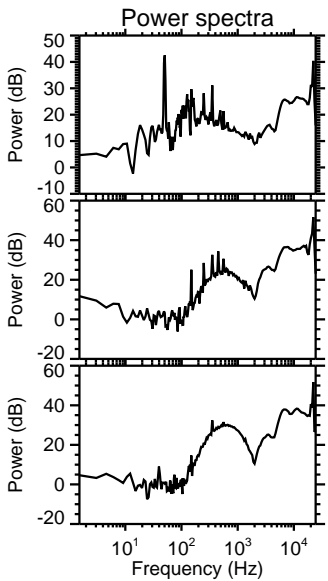
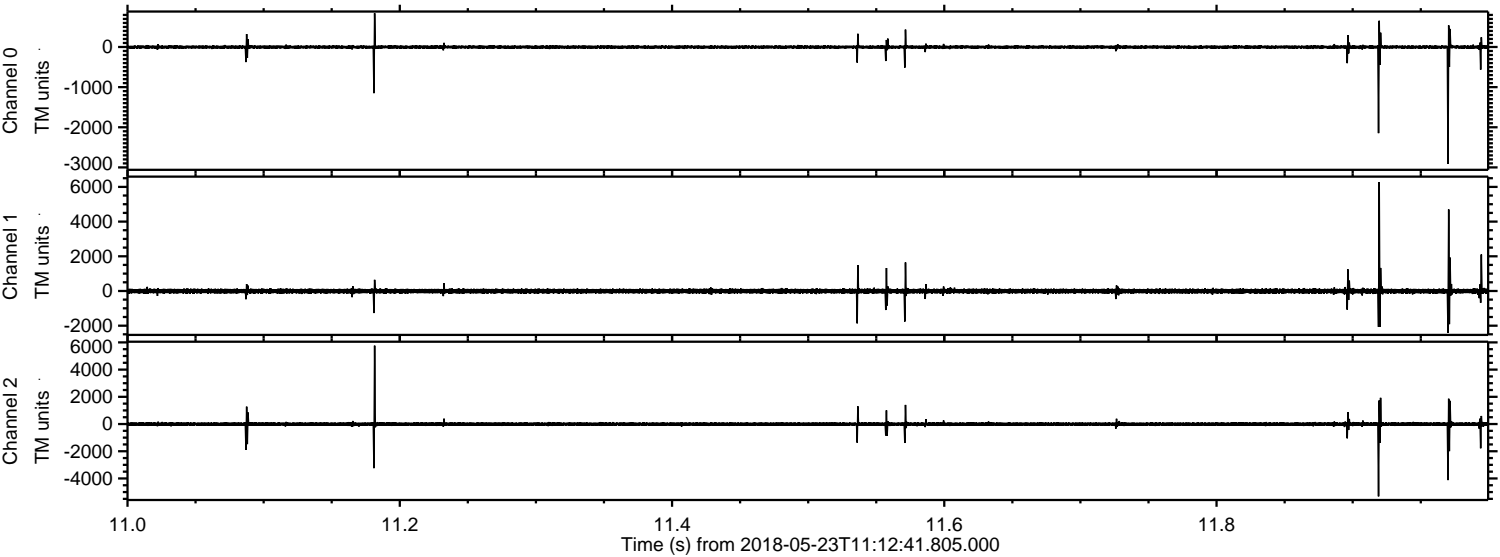


ELMAVAN 3D WAVEFORMS (Measured data sampled at 50 kHz) 51000 packets of 144 samples from 2018-05-23T11:12:41.805.000. Part 124/147

Processed Wed May 23 13:20:26 2018 by ELM ver.2012-10-06 from 001__elm20180523_111240__dat00.bin



Processed Wed May 23 13:20:27 2018 by ELM ver.2012-10-06 from 001__elm20180523_111240__dat00.bin



Channel 0
mn: -2915
mx: 842
 μ : -1.3
 σ : 28.9

Channel 1
mn: -2413
mx: 6277
 μ : -8.9
 σ : 92.0

Channel 2
mn: -5319
mx: 5760
 μ : -8.6
 σ : 91.7

Processed Wed May 23 13:20:28 2018 by ELM ver.2012-10-06 from 001__elm20180523_111240__dat00.bin

