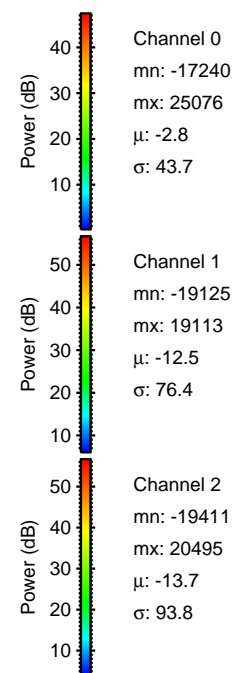
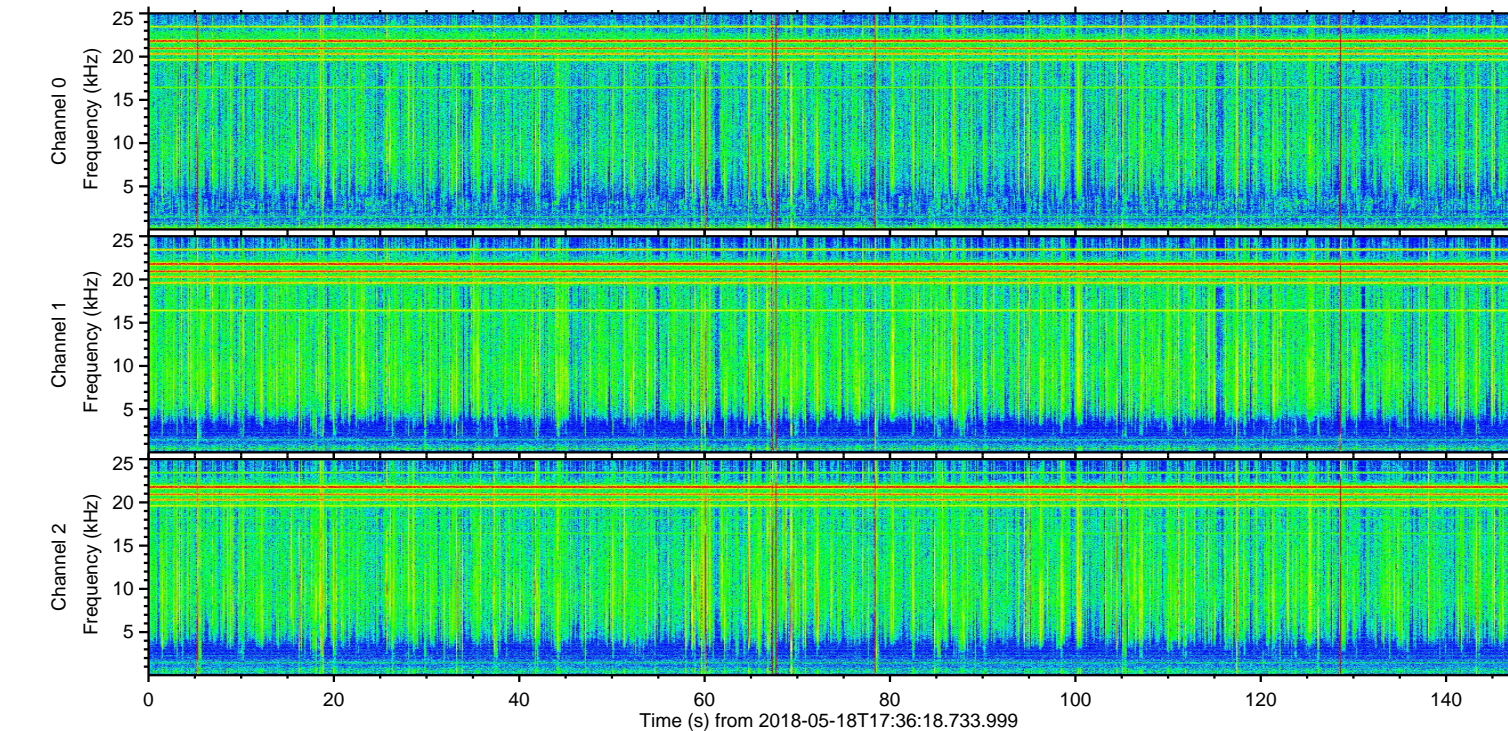
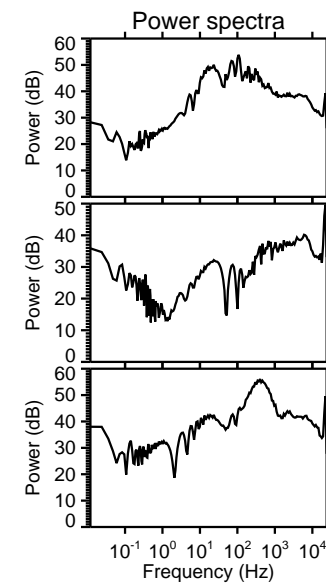
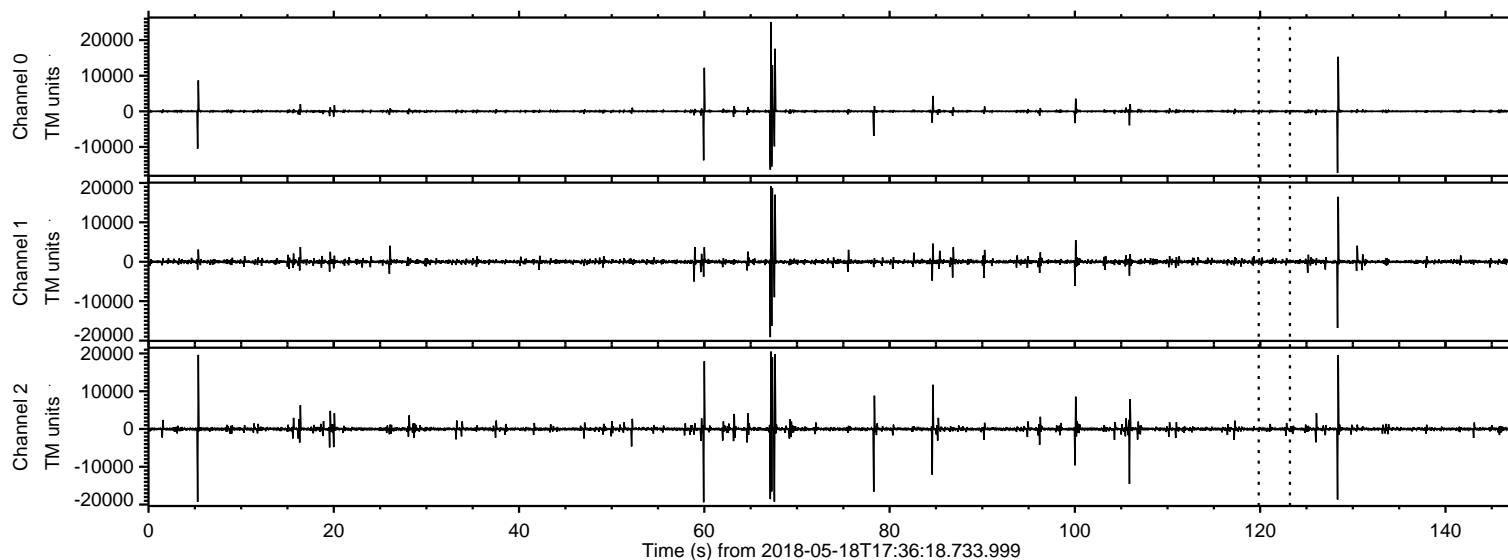
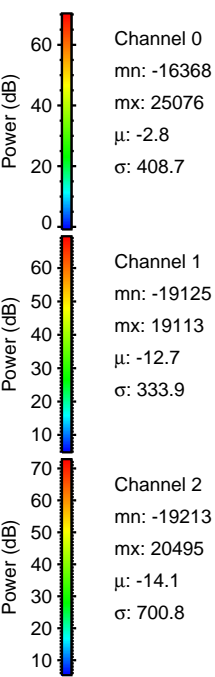
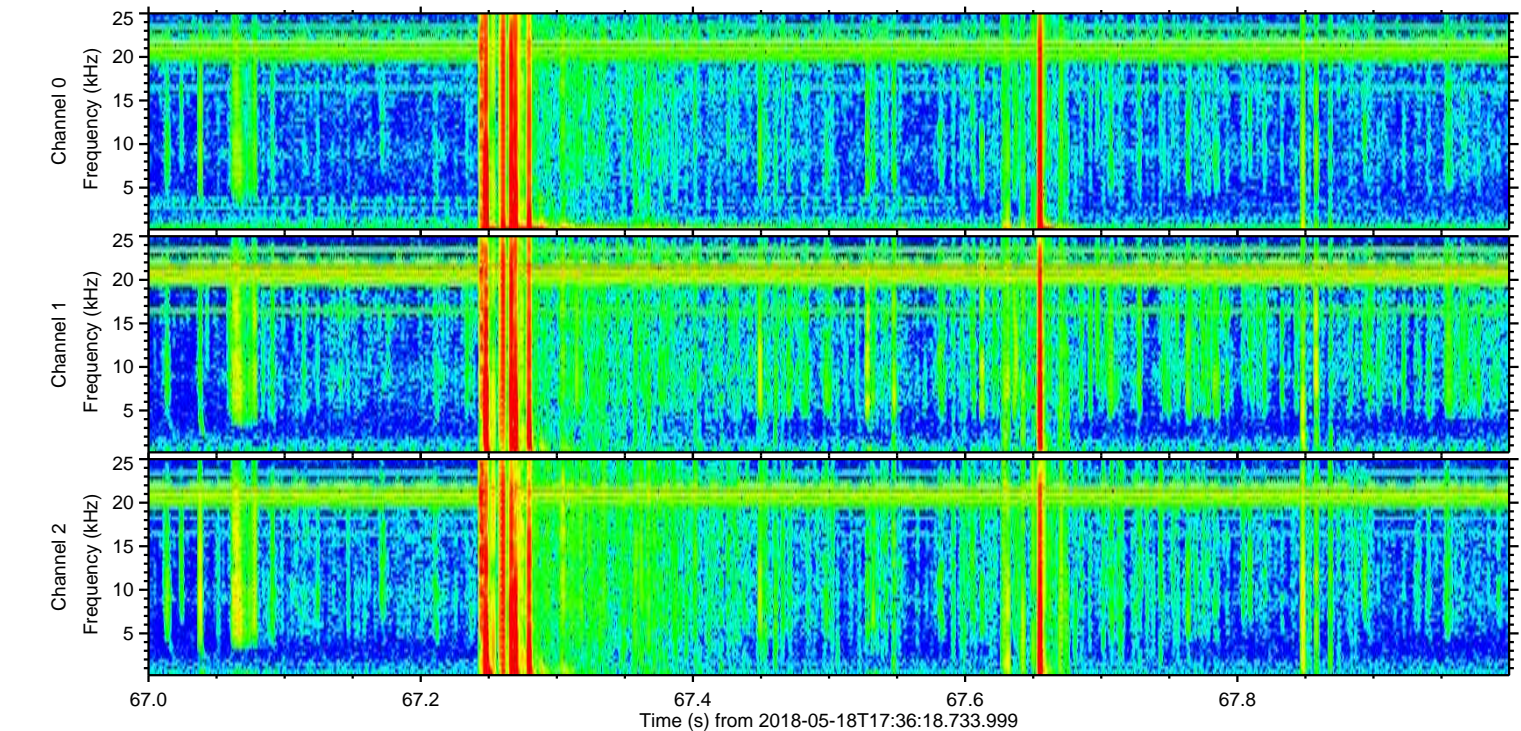
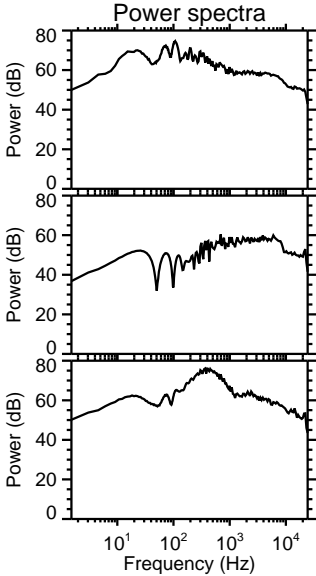
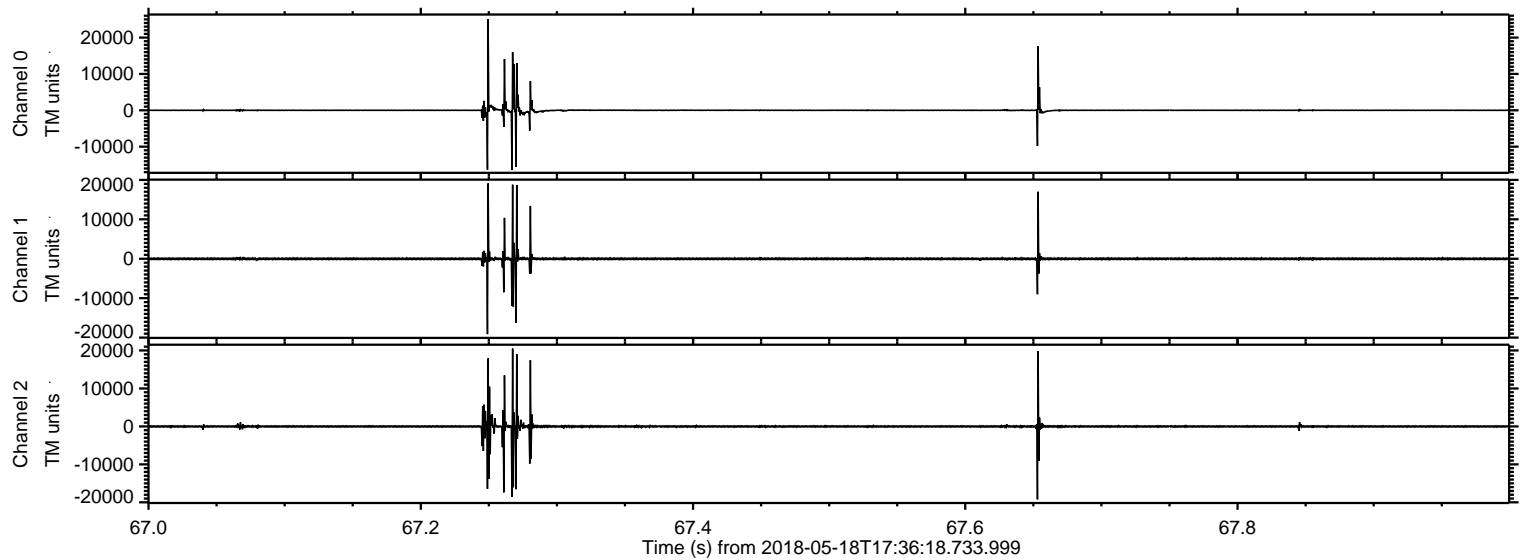


ELMAVAN 3D WAVEFORMS (Measured data sampled at 50 kHz) 50998 packets of 144 samples from 2018-05-18T17:36:18.733.999.

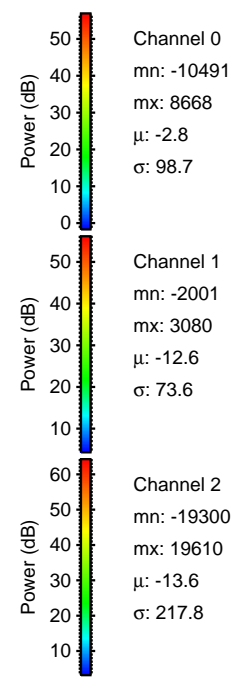
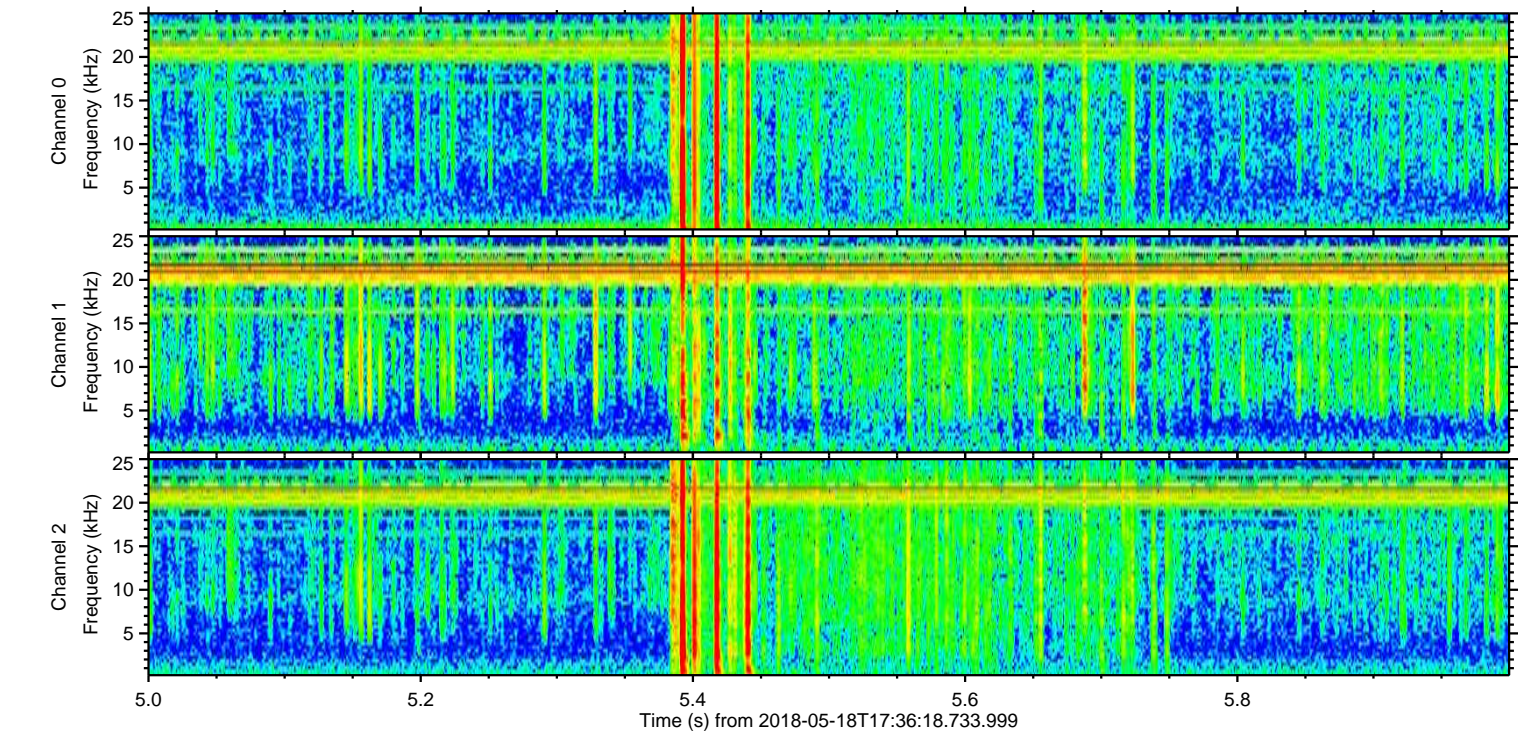
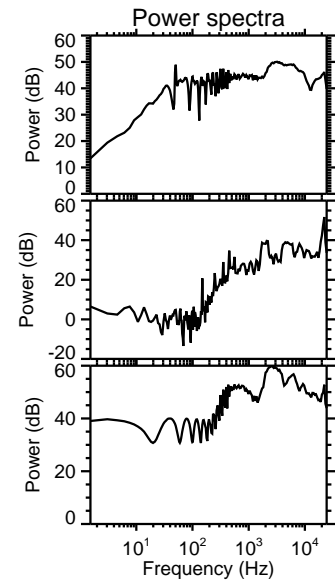
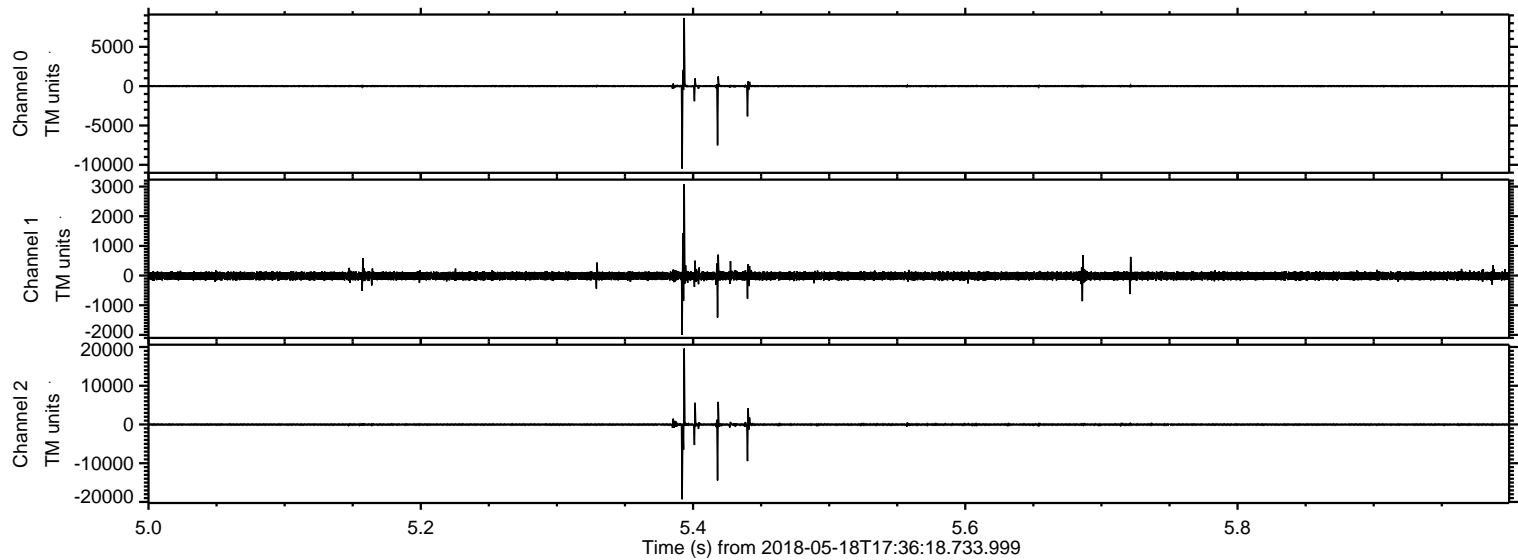
Processed Fri May 18 19:44:05 2018 by ELM ver.2012-10-06 from 001__elm20180518_173617__dat00.bin



Processed Fri May 18 19:44:11 2018 by ELM ver.2012-10-06 from 001__elm20180518_173617__dat00.bin

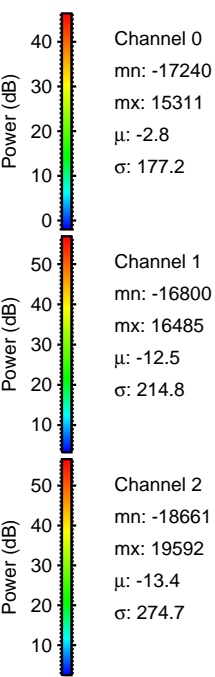
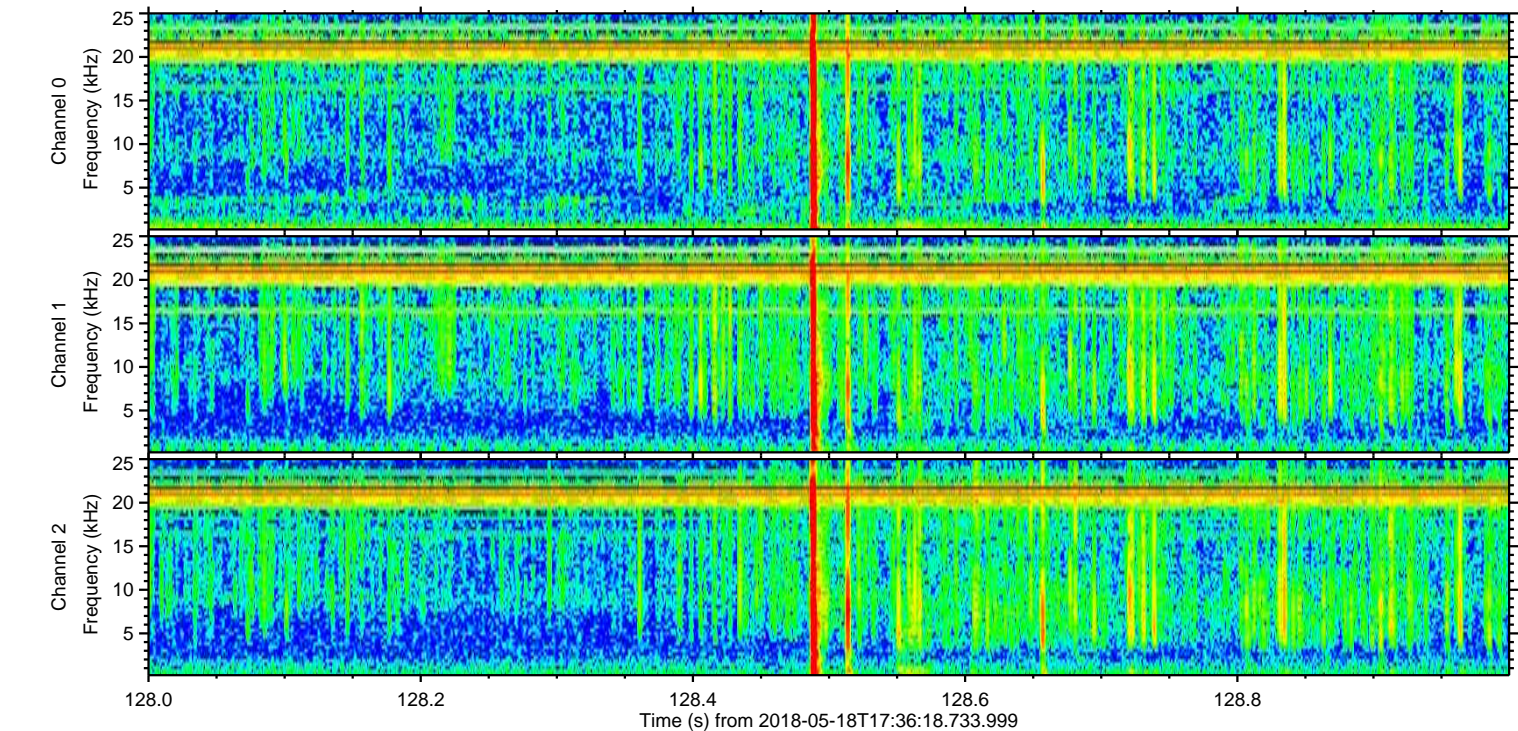
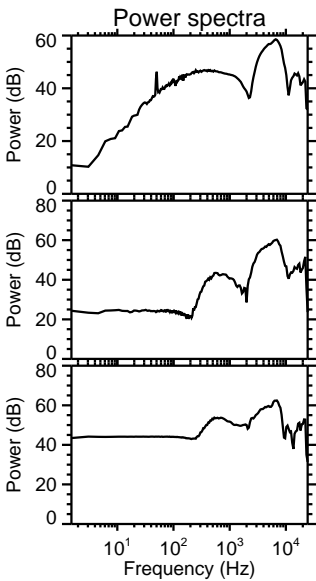
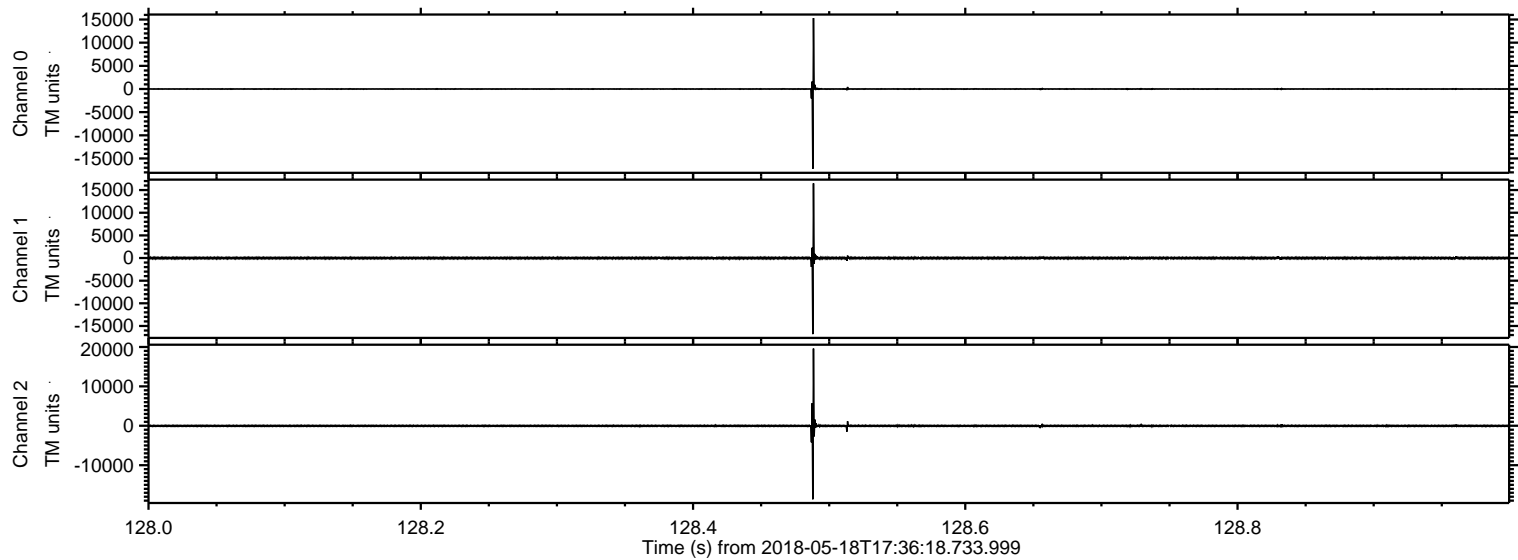


Processed Fri May 18 19:44:12 2018 by ELM ver.2012-10-06 from 001__elm20180518_173617__dat00.bin

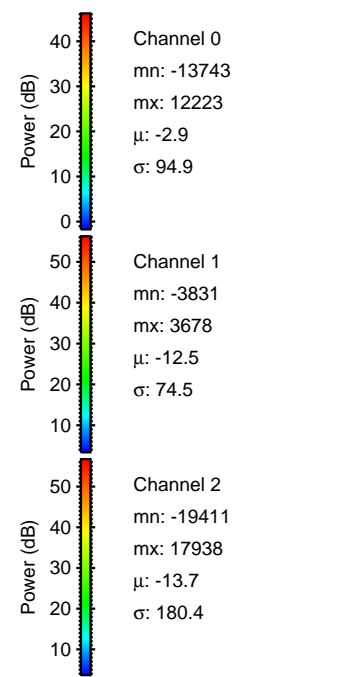
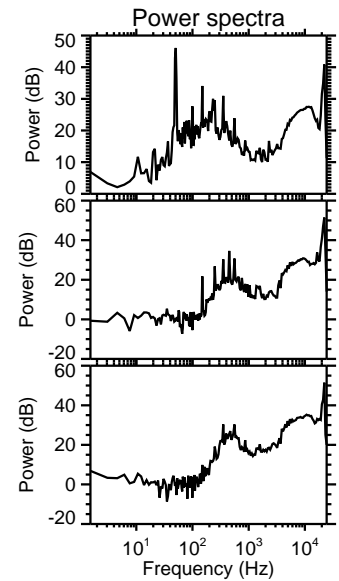
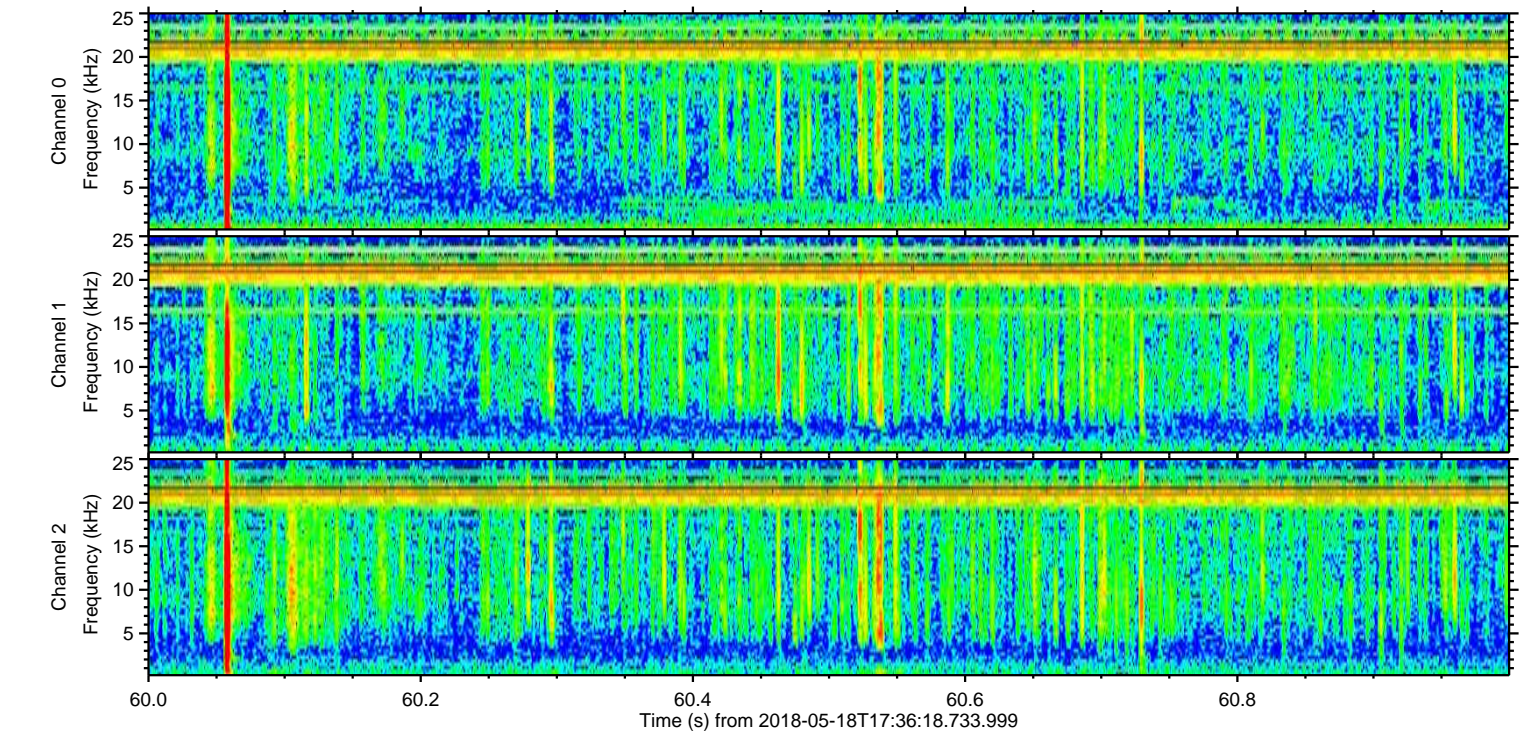
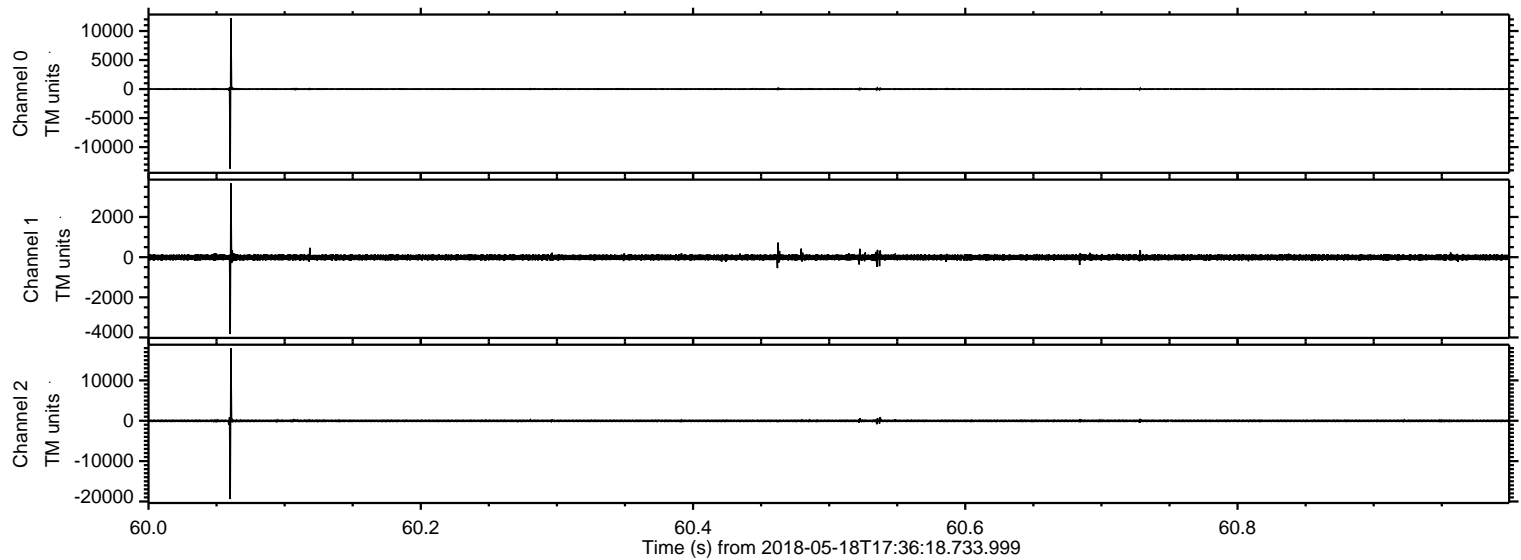


ELMAVAN 3D WAVEFORMS (Measured data sampled at 50 kHz) 50998 packets of 144 samples from 2018-05-18T17:36:18.733.999. Part 129/147

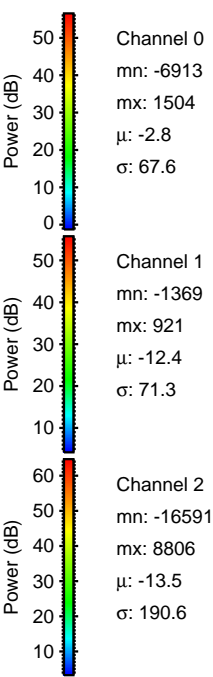
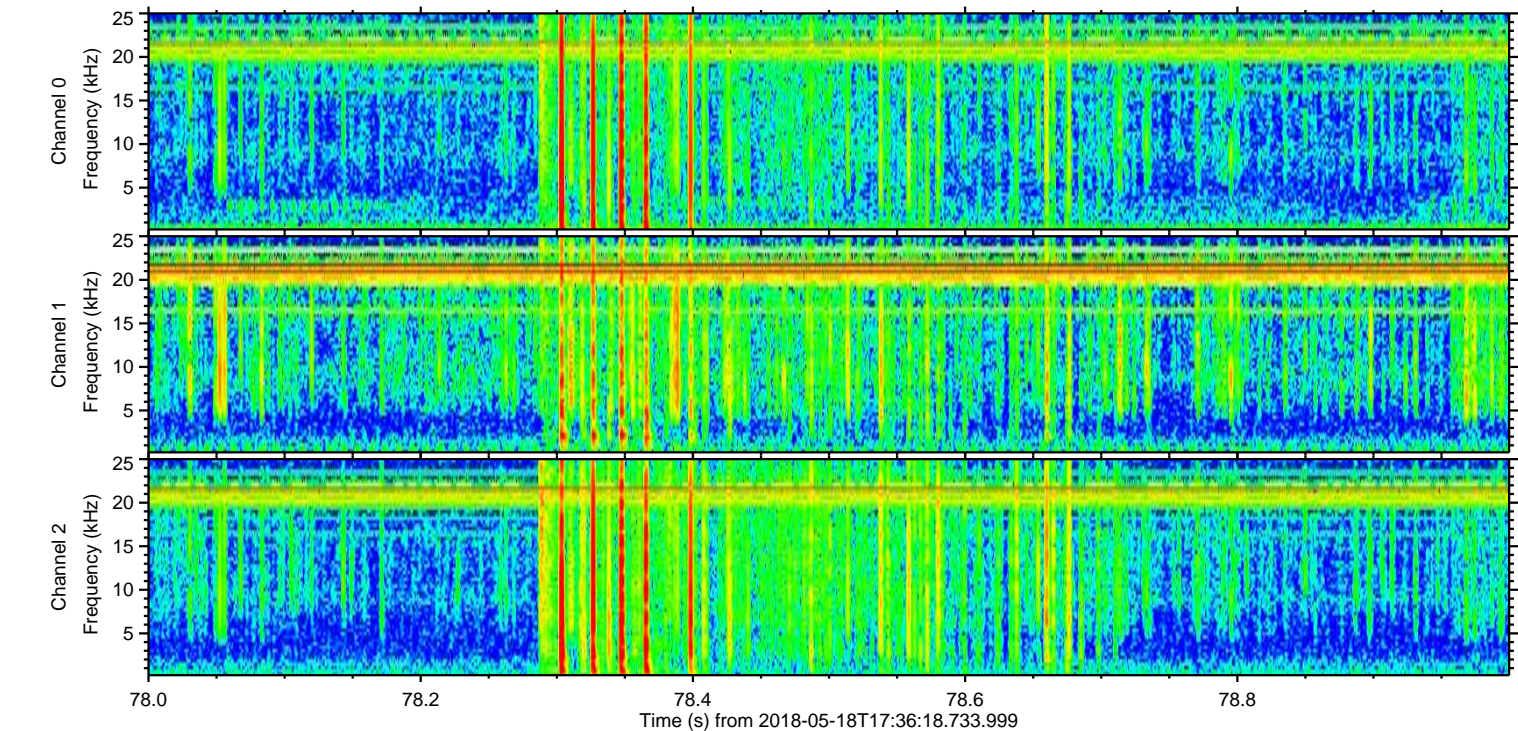
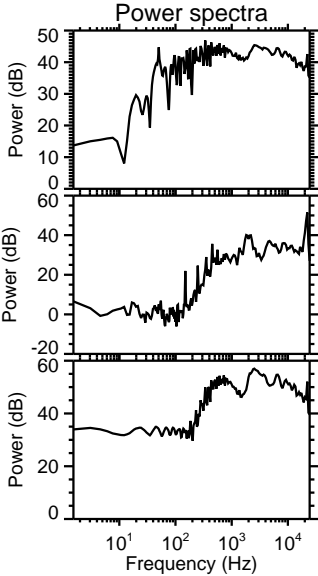
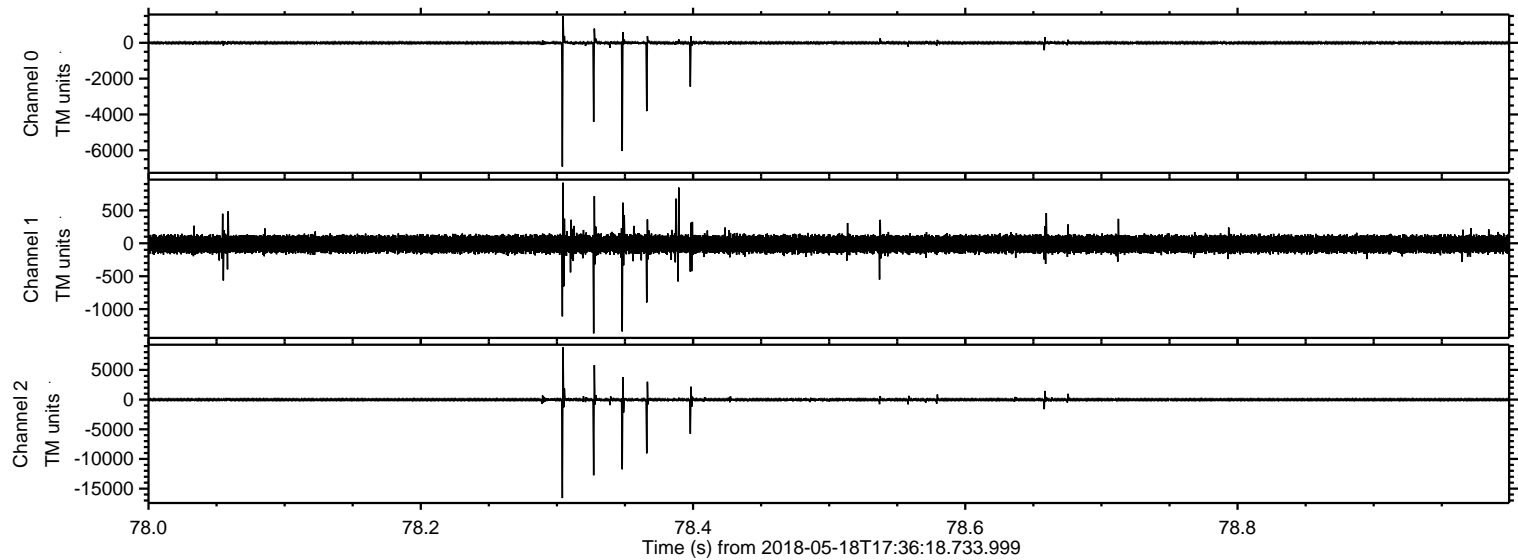
Processed Fri May 18 19:44:12 2018 by ELM ver.2012-10-06 from 001__elm20180518_173617__dat00.bin



Processed Fri May 18 19:44:13 2018 by ELM ver.2012-10-06 from 001__elm20180518_173617__dat00.bin

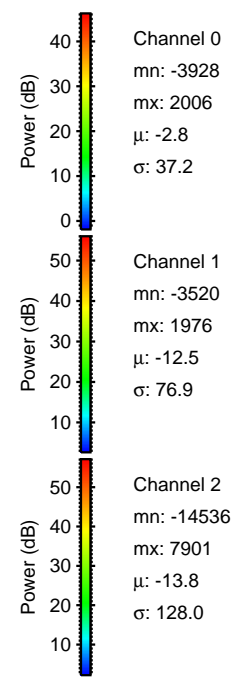
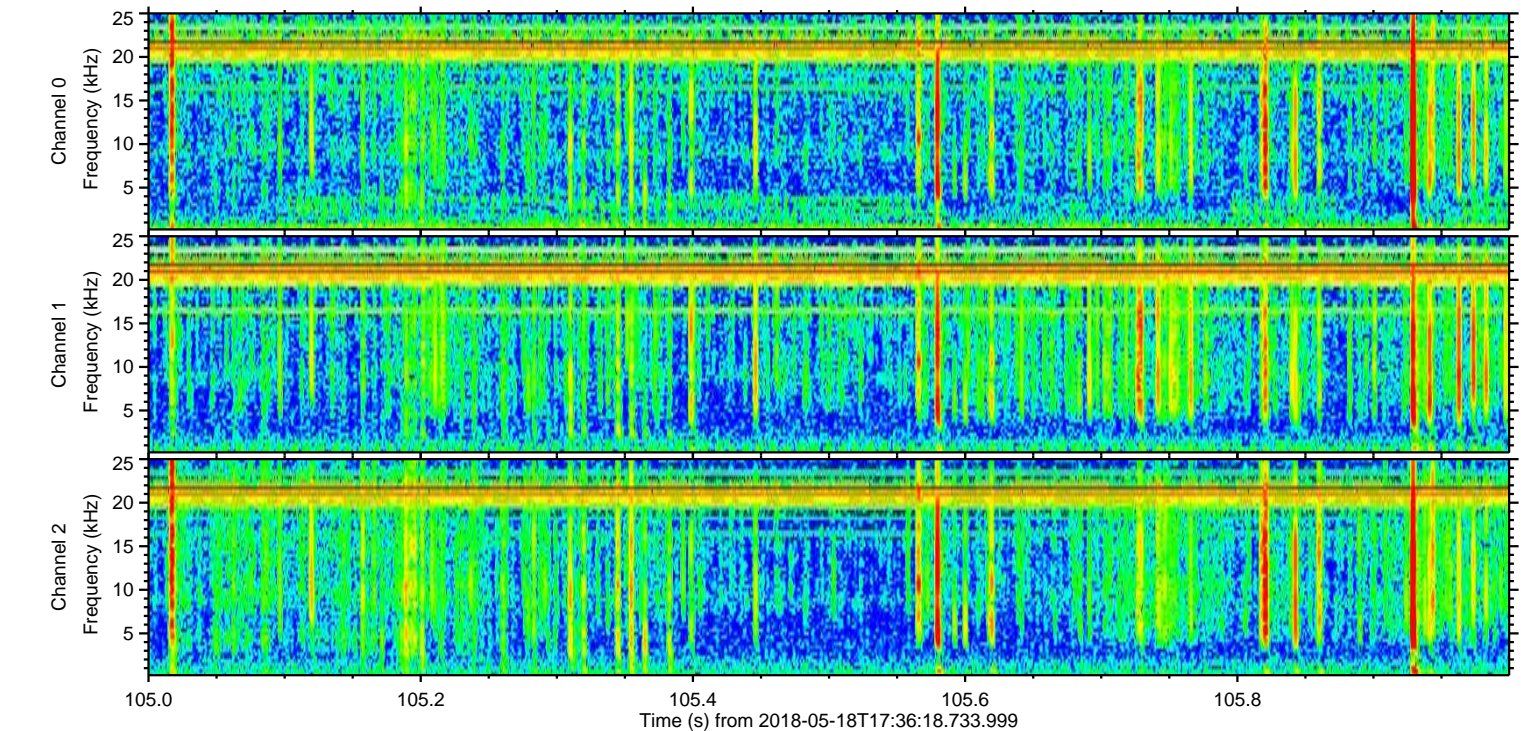
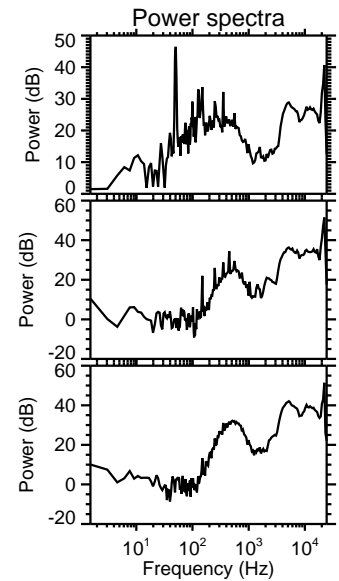
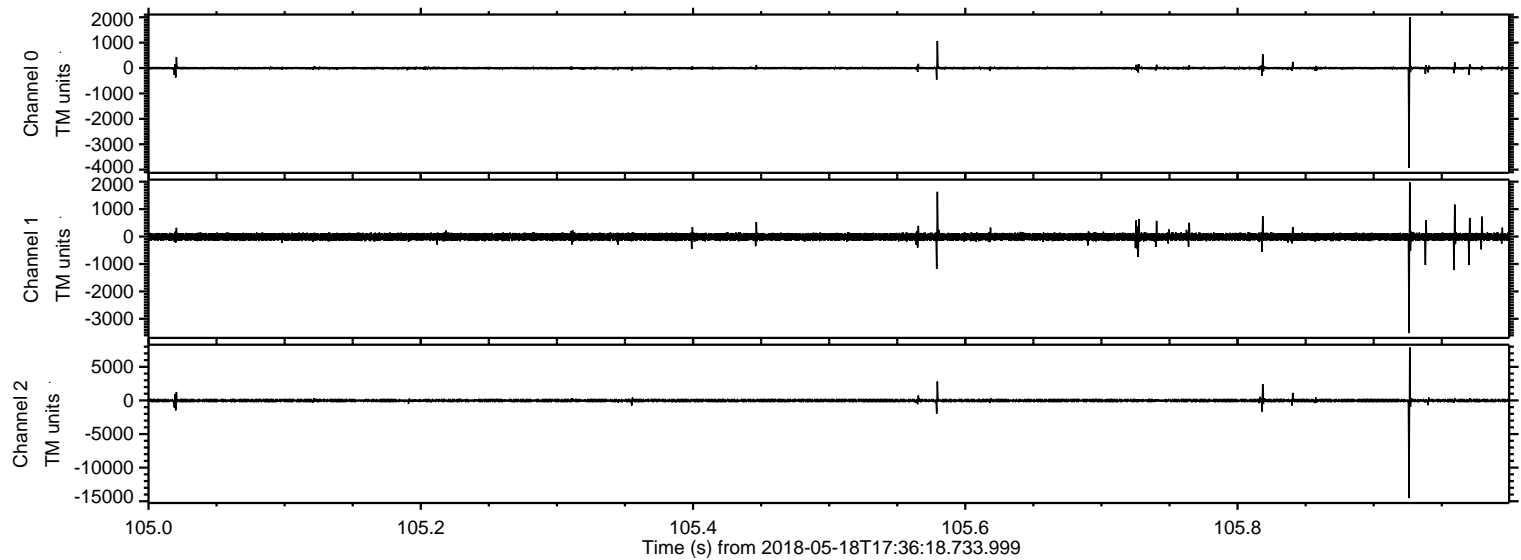


Processed Fri May 18 19:44:13 2018 by ELM ver.2012-10-06 from 001__elm20180518_173617__dat00.bin

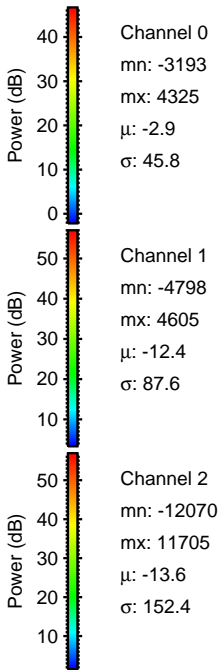
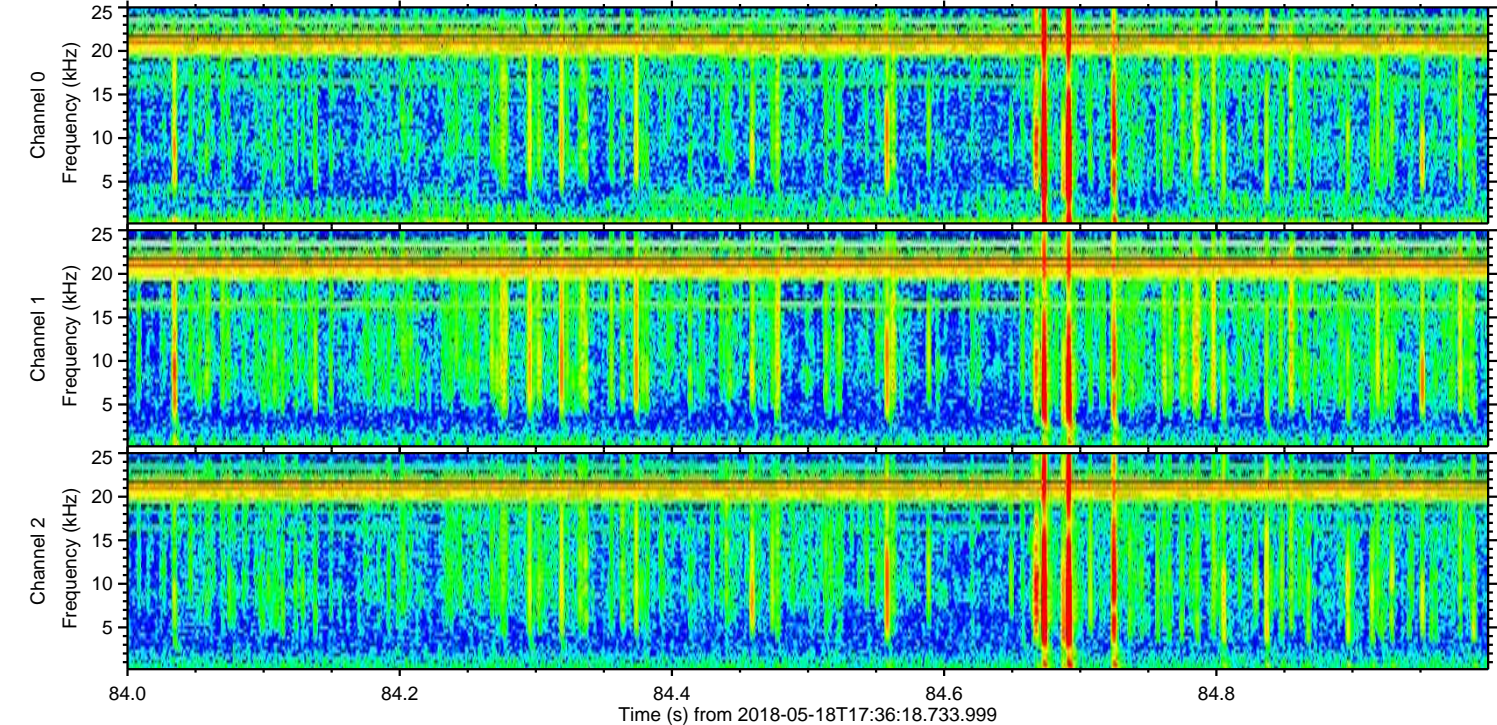
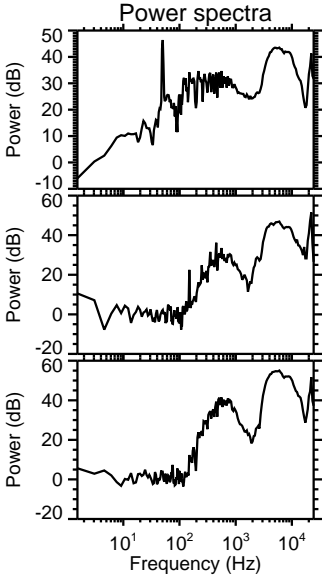
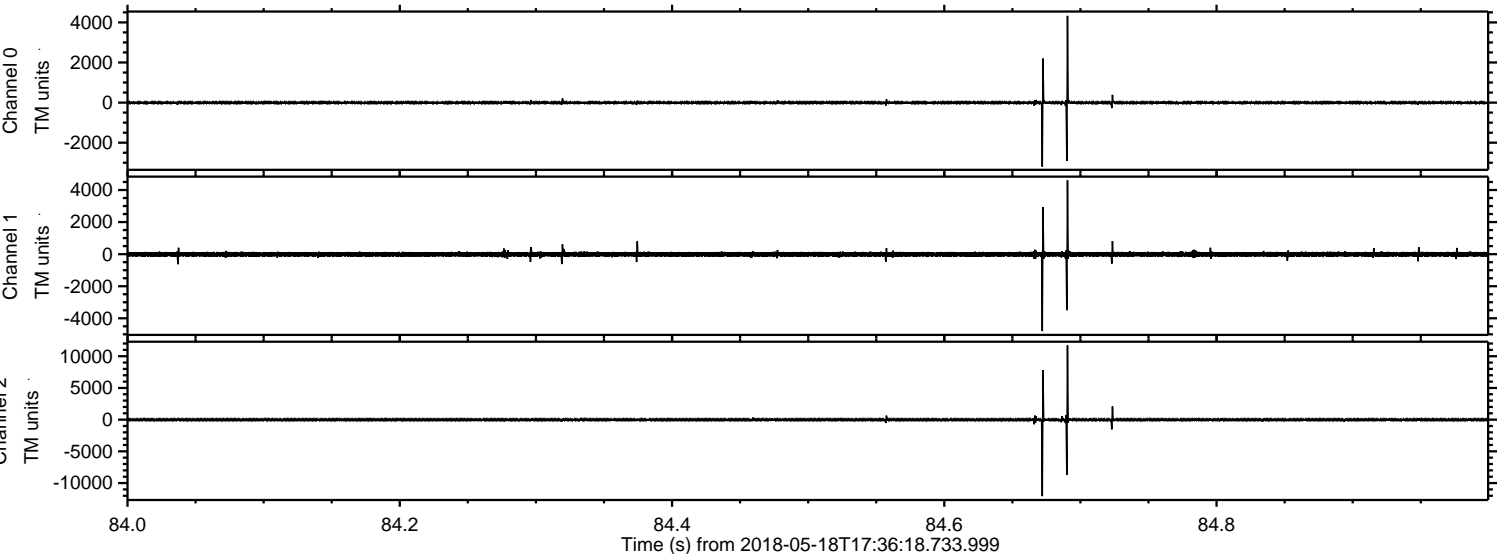


ELMAVAN 3D WAVEFORMS (Measured data sampled at 50 kHz) 50998 packets of 144 samples from 2018-05-18T17:36:18.733.999. Part 106/147

Processed Fri May 18 19:44:14 2018 by ELM ver.2012-10-06 from 001__elm20180518_173617__dat00.bin

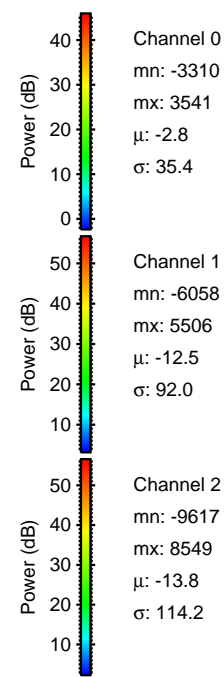
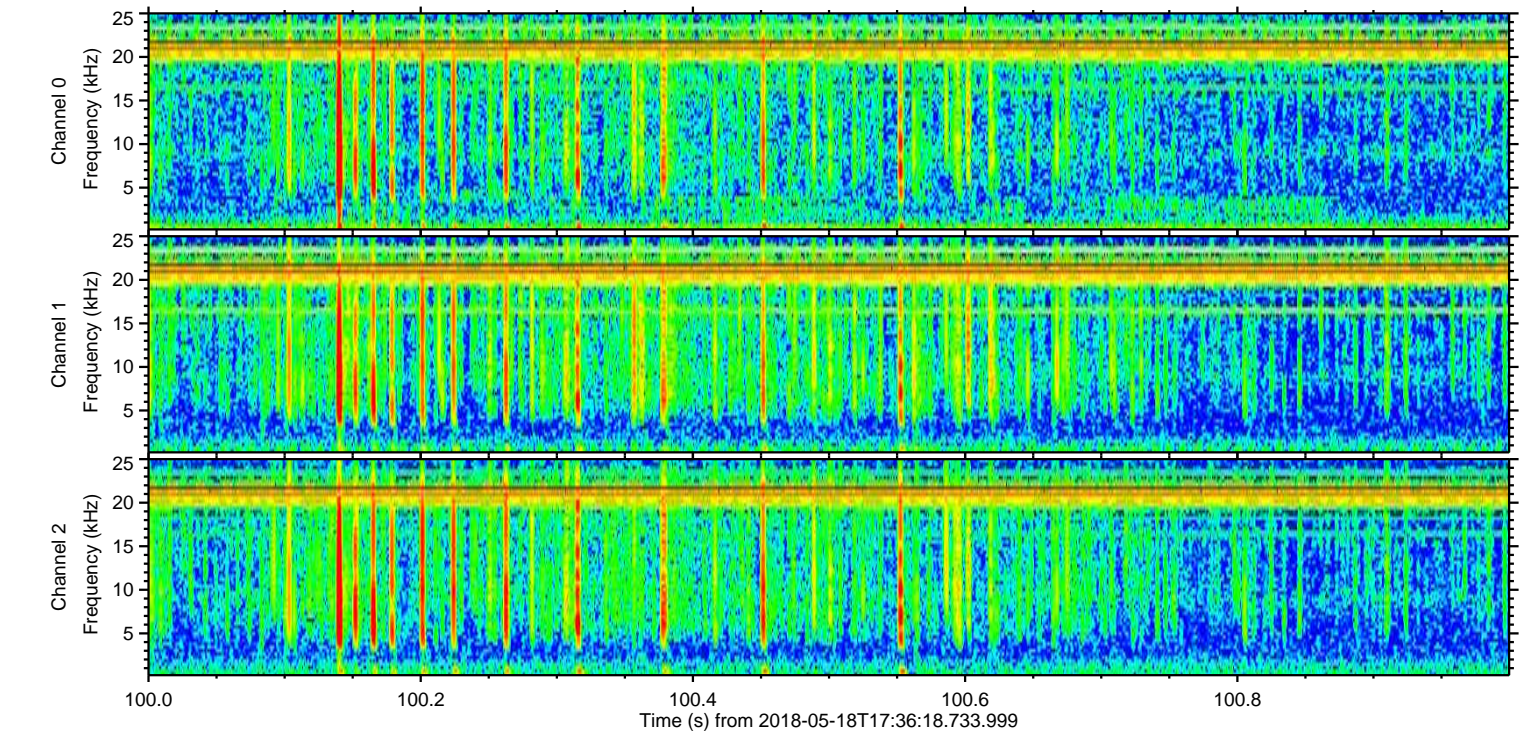
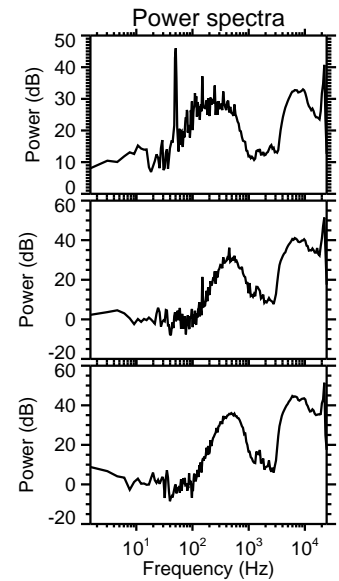
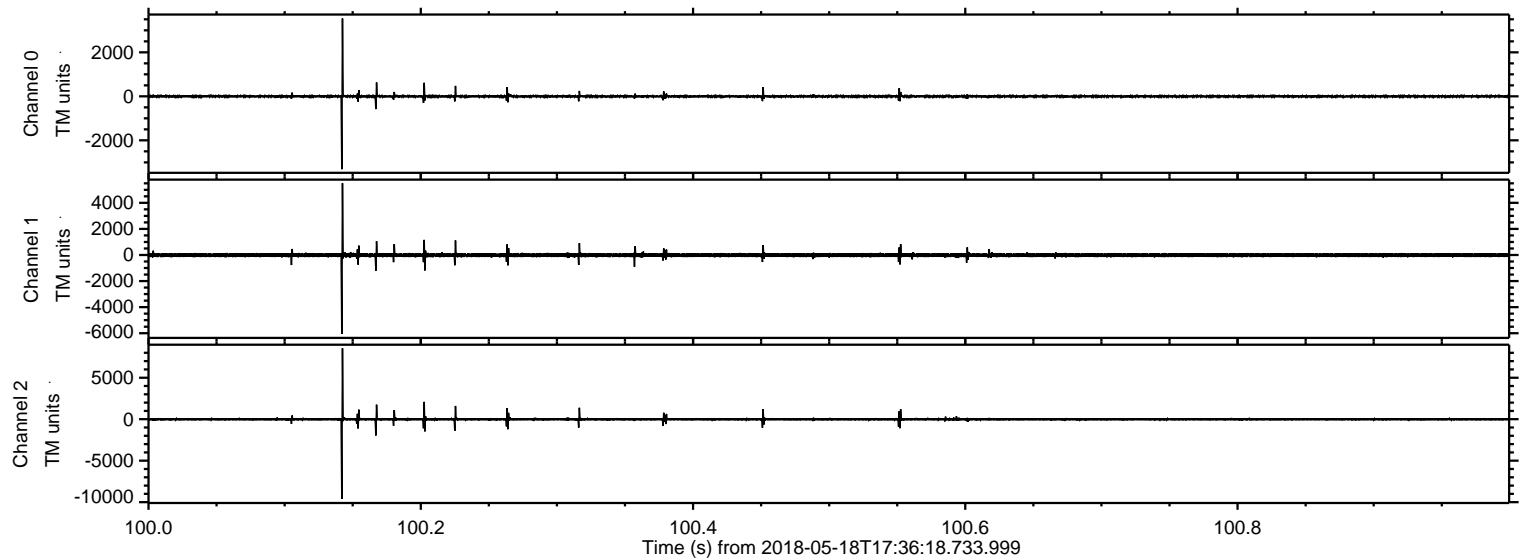


Processed Fri May 18 19:44:15 2018 by ELM ver.2012-10-06 from 001__elm20180518_173617__dat00.bin



ELMAVAN 3D WAVEFORMS (Measured data sampled at 50 kHz) 50998 packets of 144 samples from 2018-05-18T17:36:18.733.999. Part 101/147

Processed Fri May 18 19:44:15 2018 by ELM ver.2012-10-06 from 001__elm20180518_173617__dat00.bin



Channel 0
mn: -3310
mx: 3541
 μ : -2.8
 σ : 35.4

Channel 1
mn: -6058
mx: 5506
 μ : -12.5
 σ : 92.0

Channel 2
mn: -9617
mx: 8549
 μ : -13.8
 σ : 114.2

Processed Fri May 18 19:44:16 2018 by ELM ver.2012-10-06 from 001__elm20180518_173617__dat00.bin

