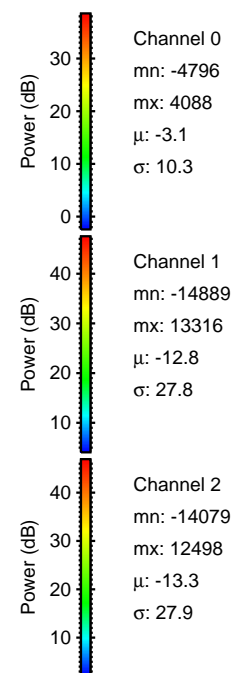
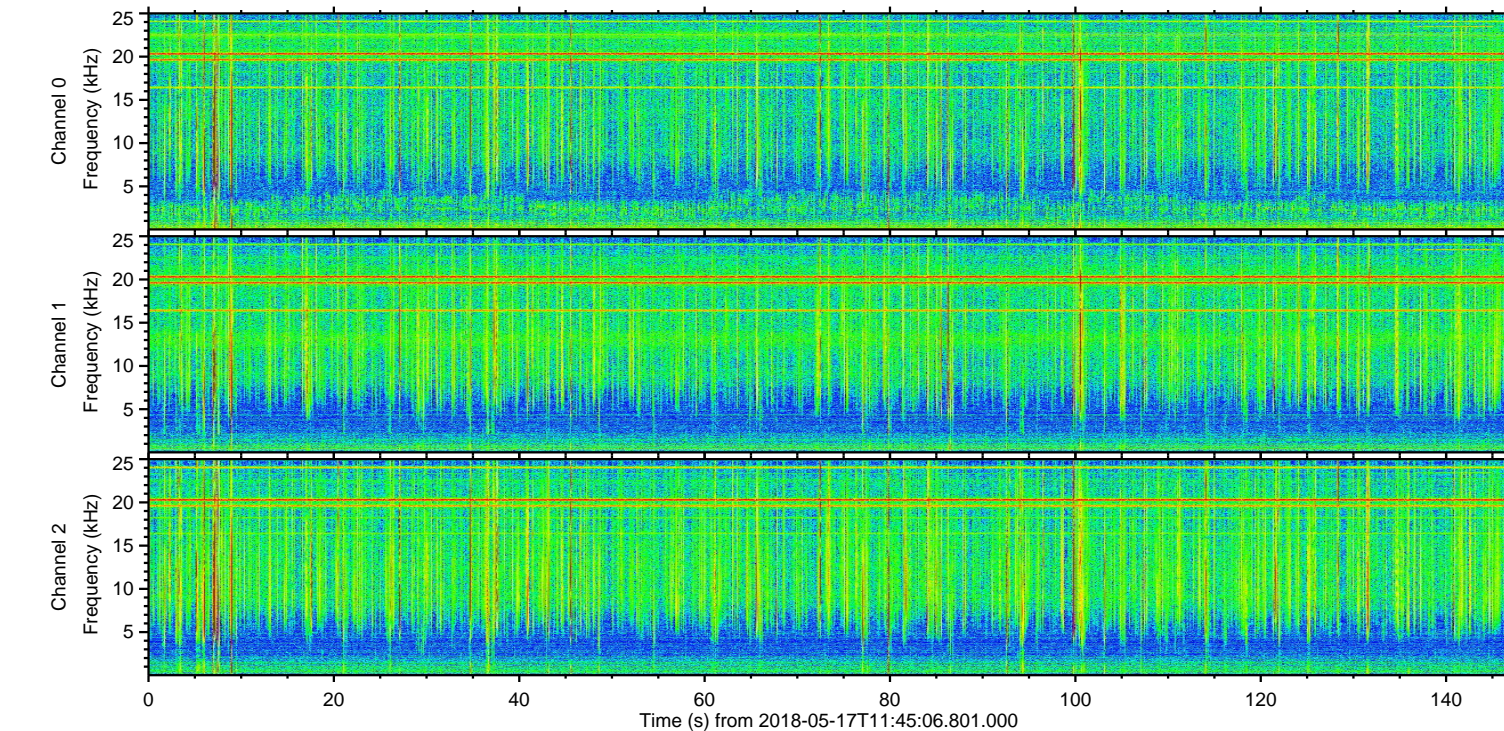
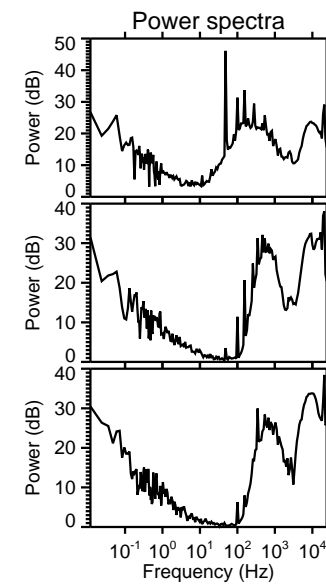
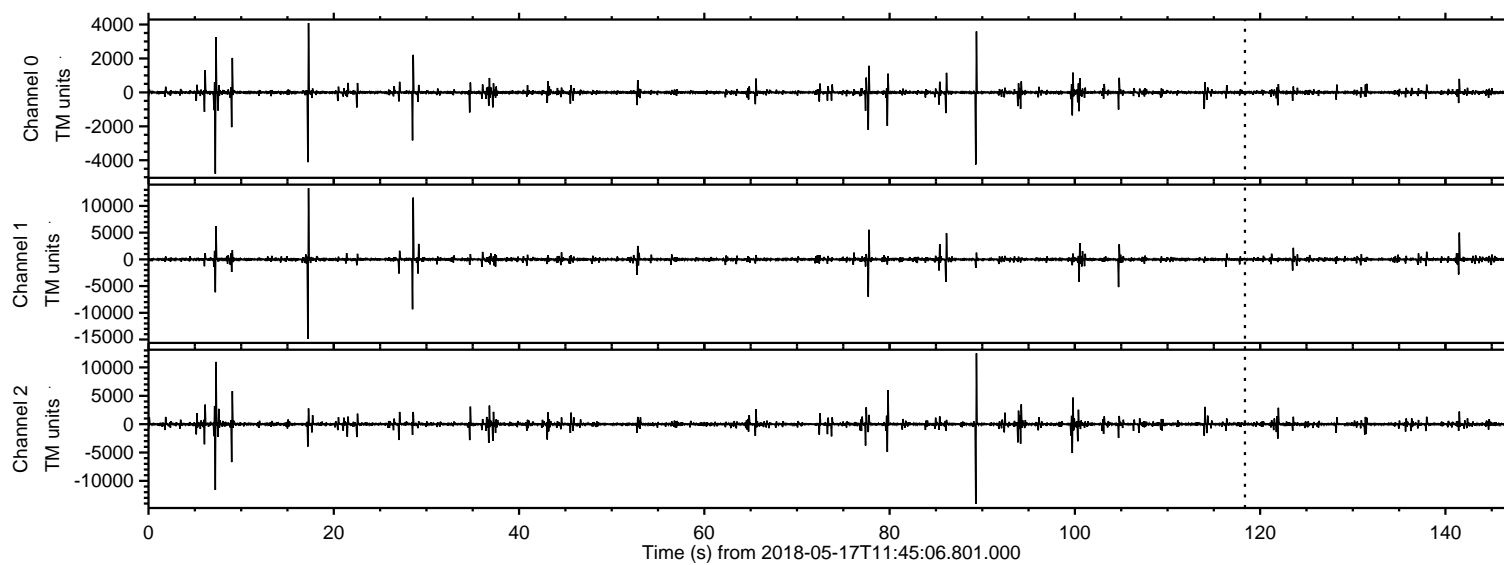
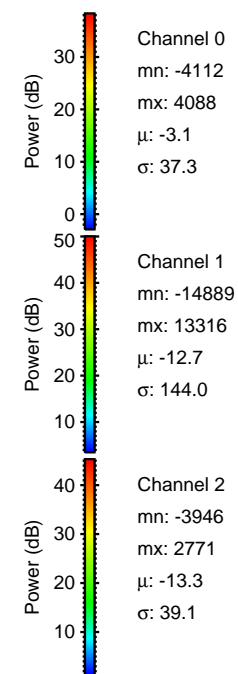
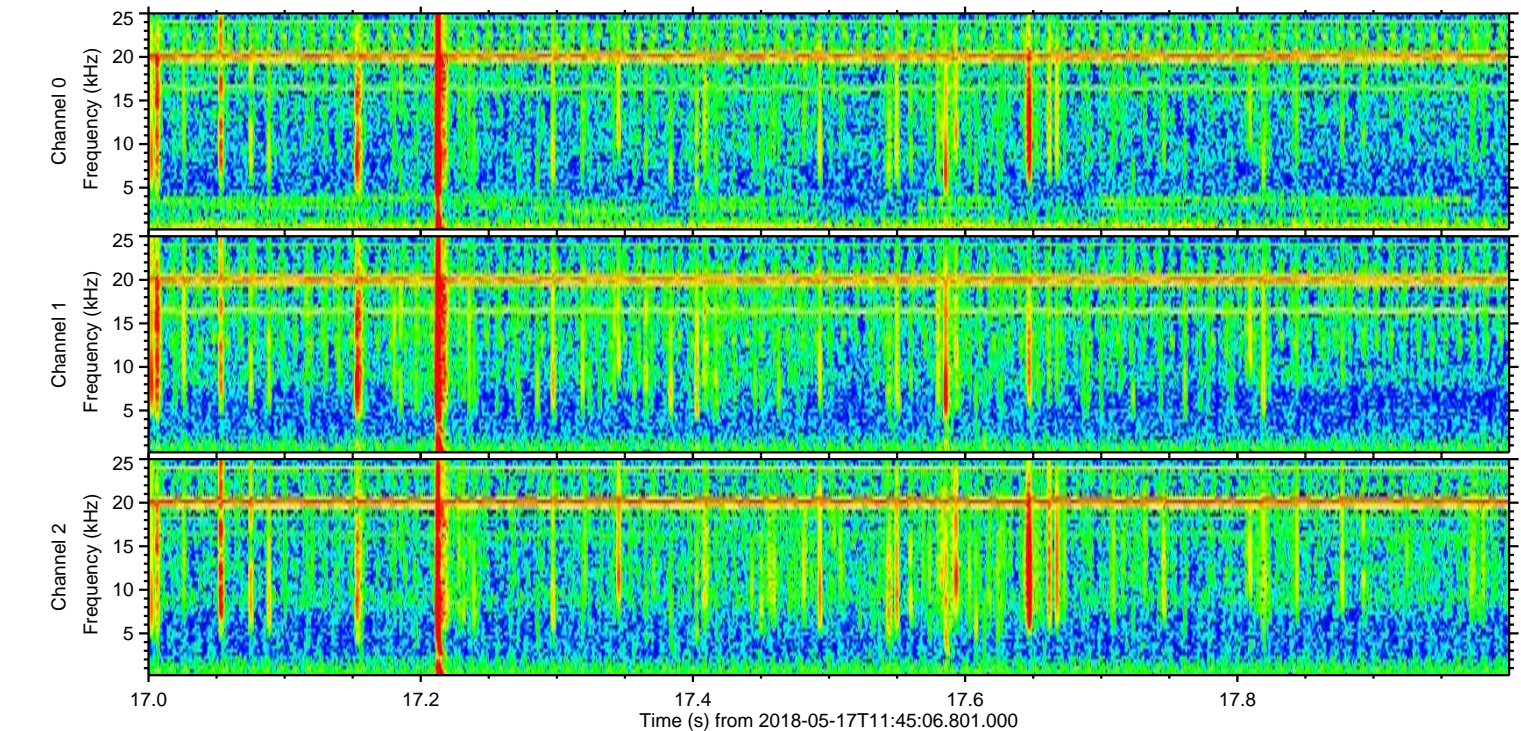
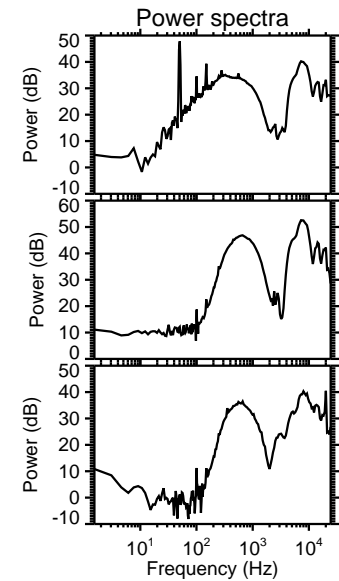
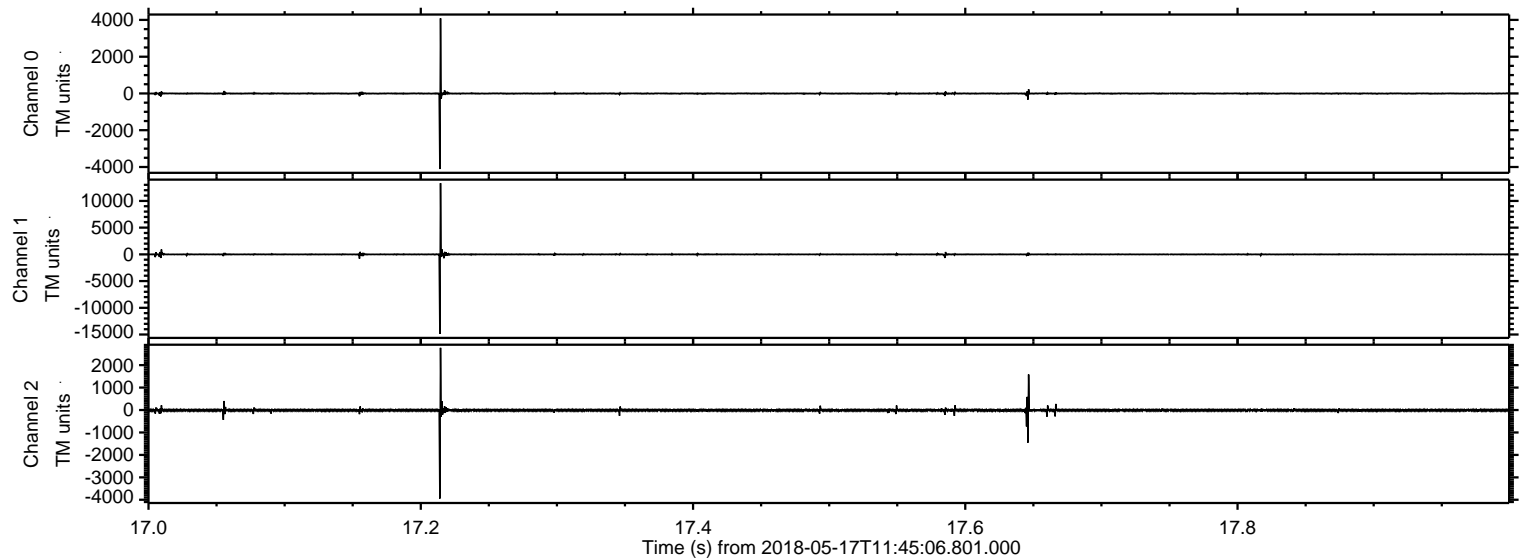


ELMAVAN 3D WAVEFORMS (Measured data sampled at 50 kHz) 50999 packets of 144 samples from 2018-05-17T11:45:06.801.000.

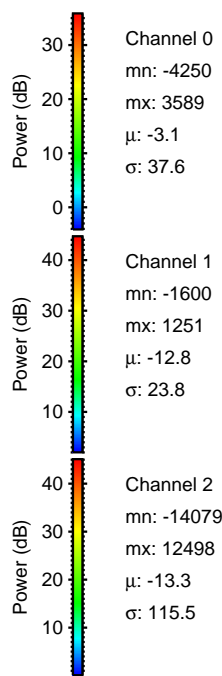
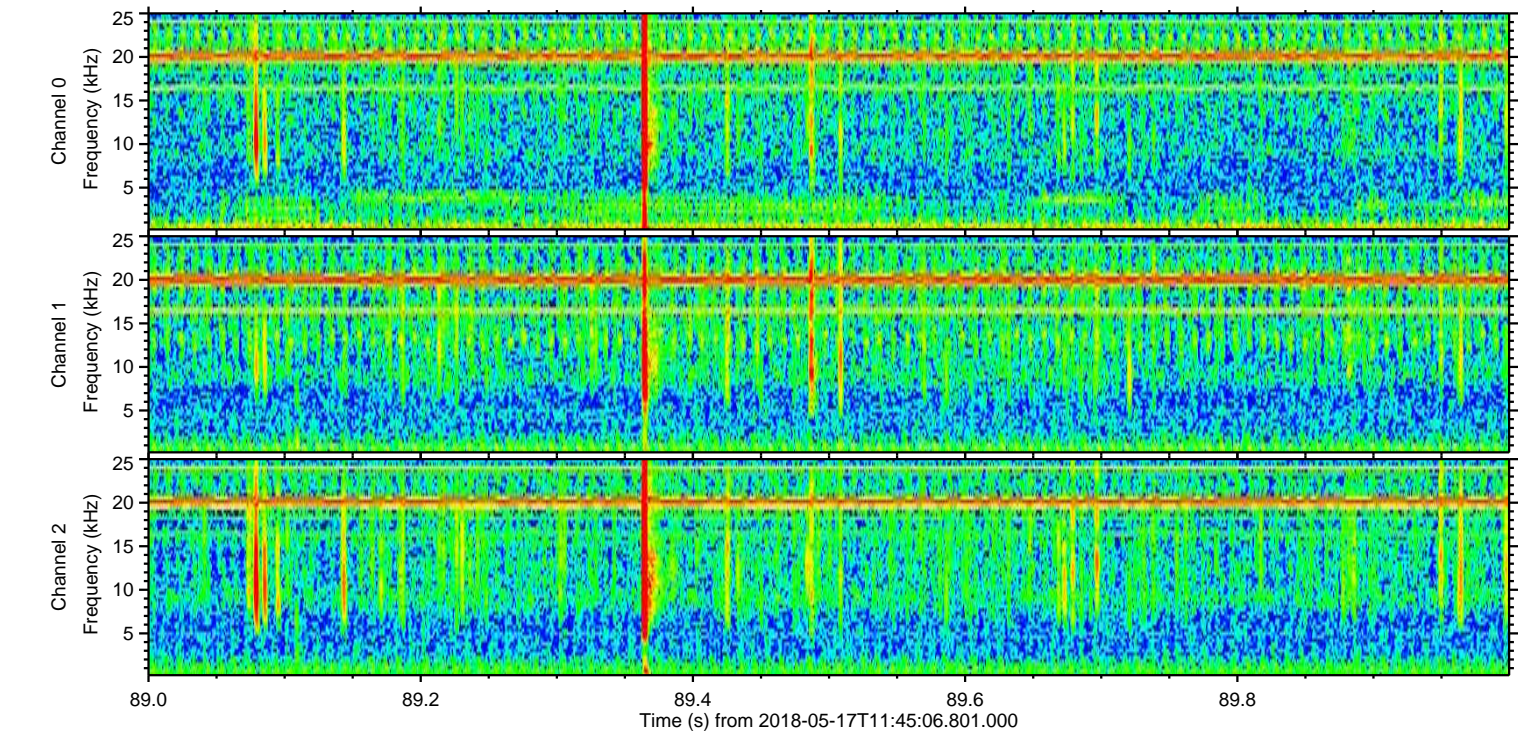
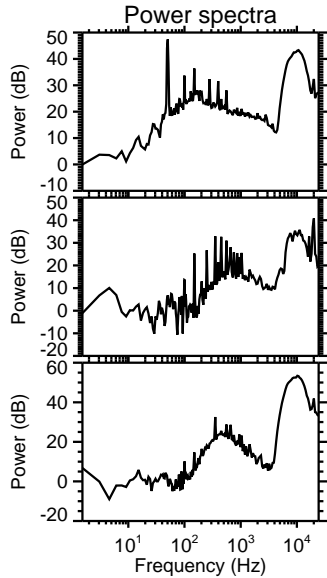
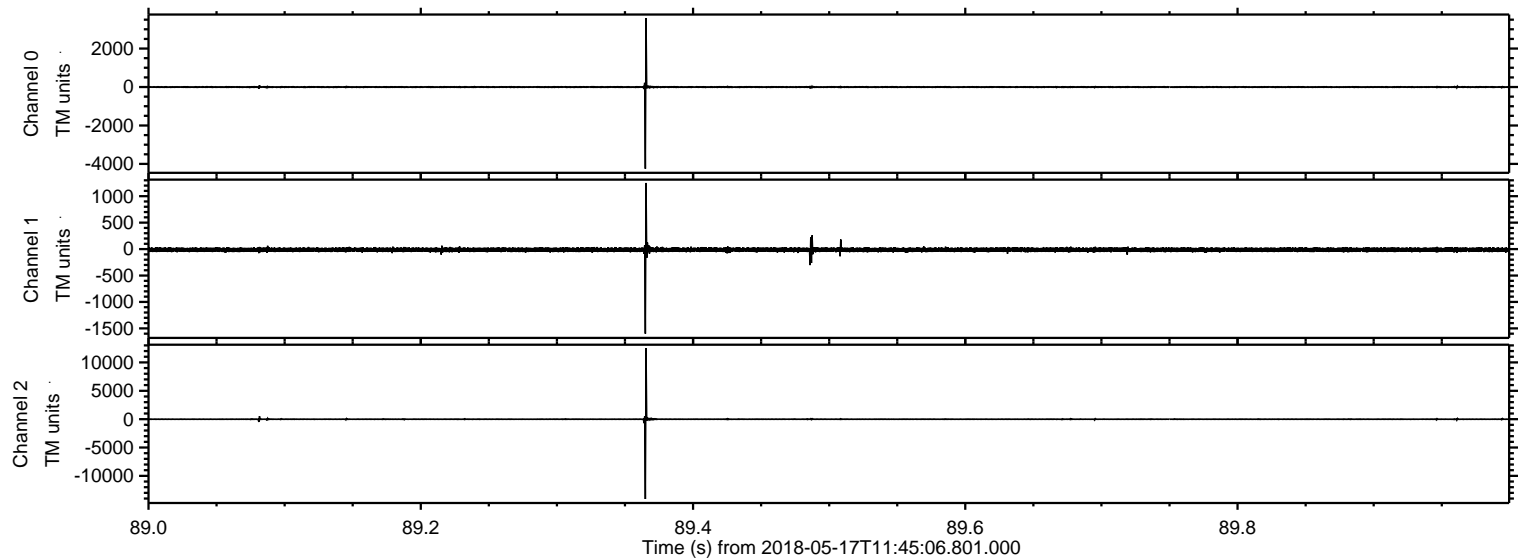
Processed Thu May 17 13:53:04 2018 by ELM ver.2012-10-06 from 001__elm20180517_114505__dat00.bin



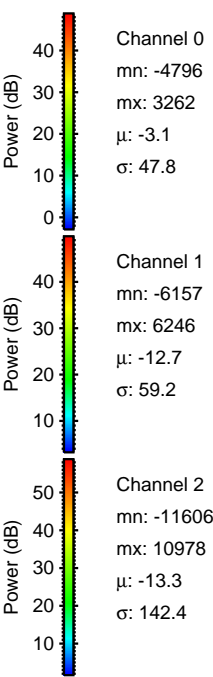
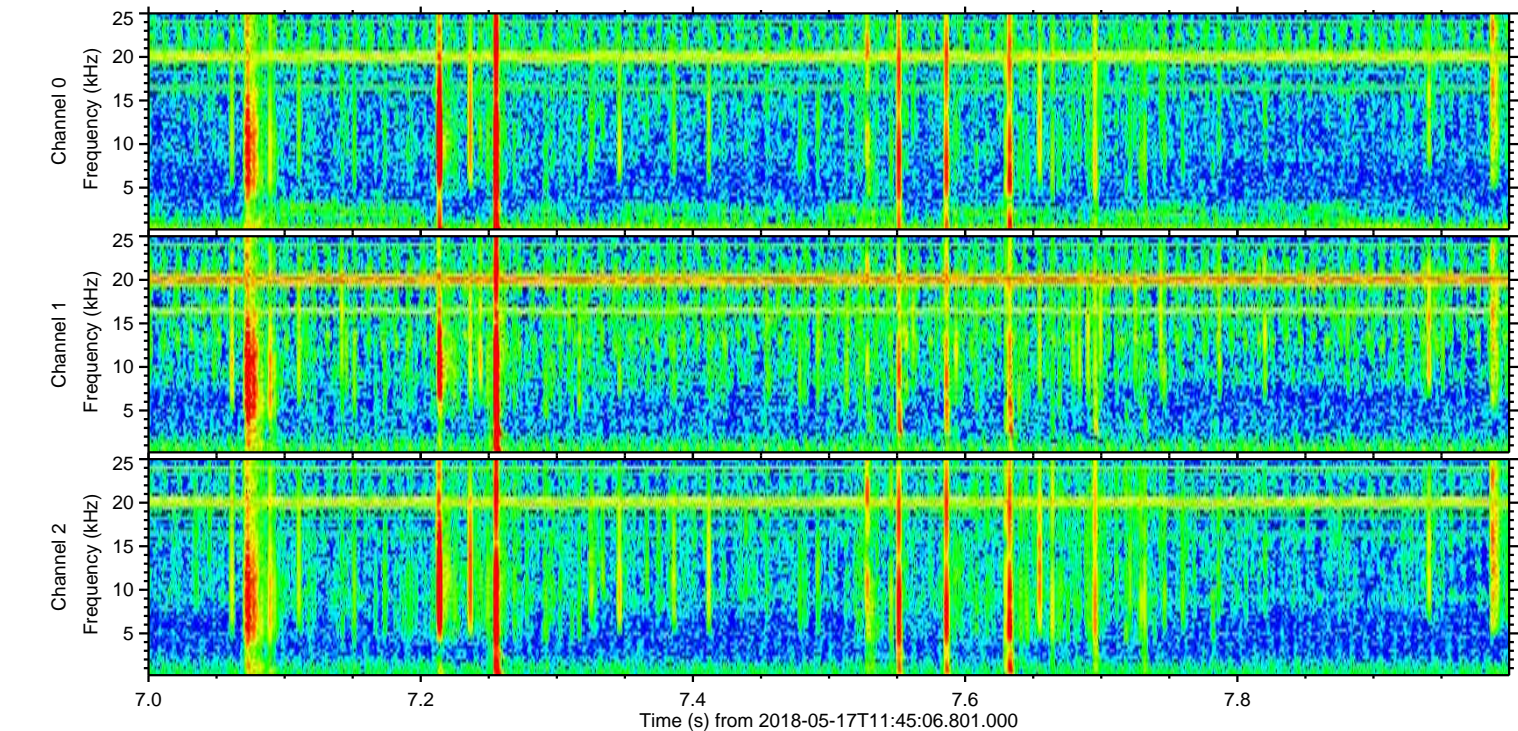
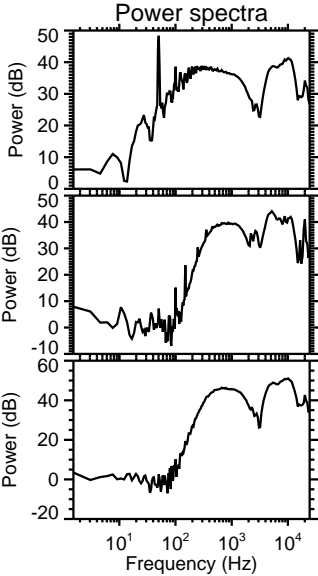
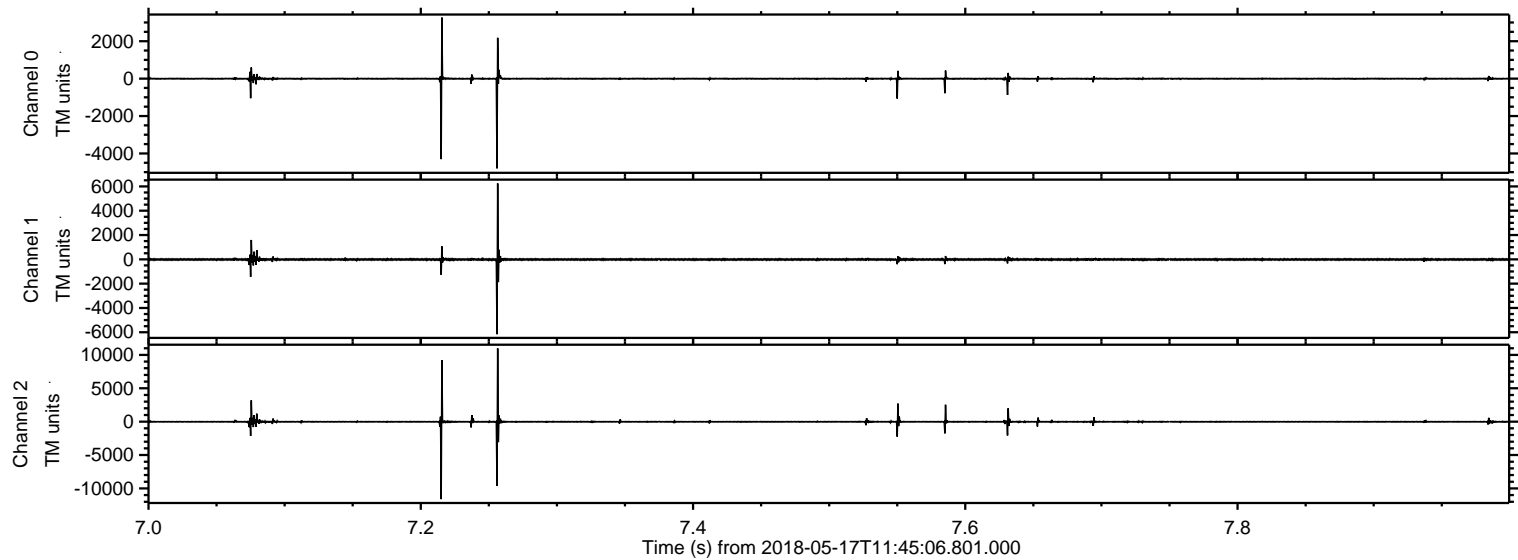
Processed Thu May 17 13:53:10 2018 by ELM ver.2012-10-06 from 001__elm20180517_114505__dat00.bin



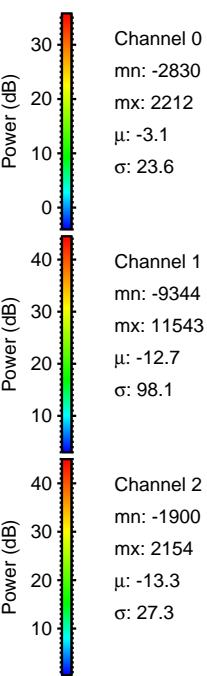
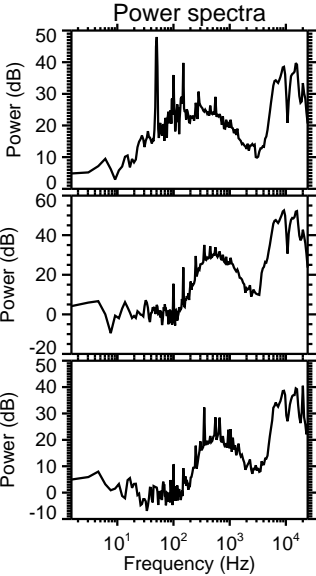
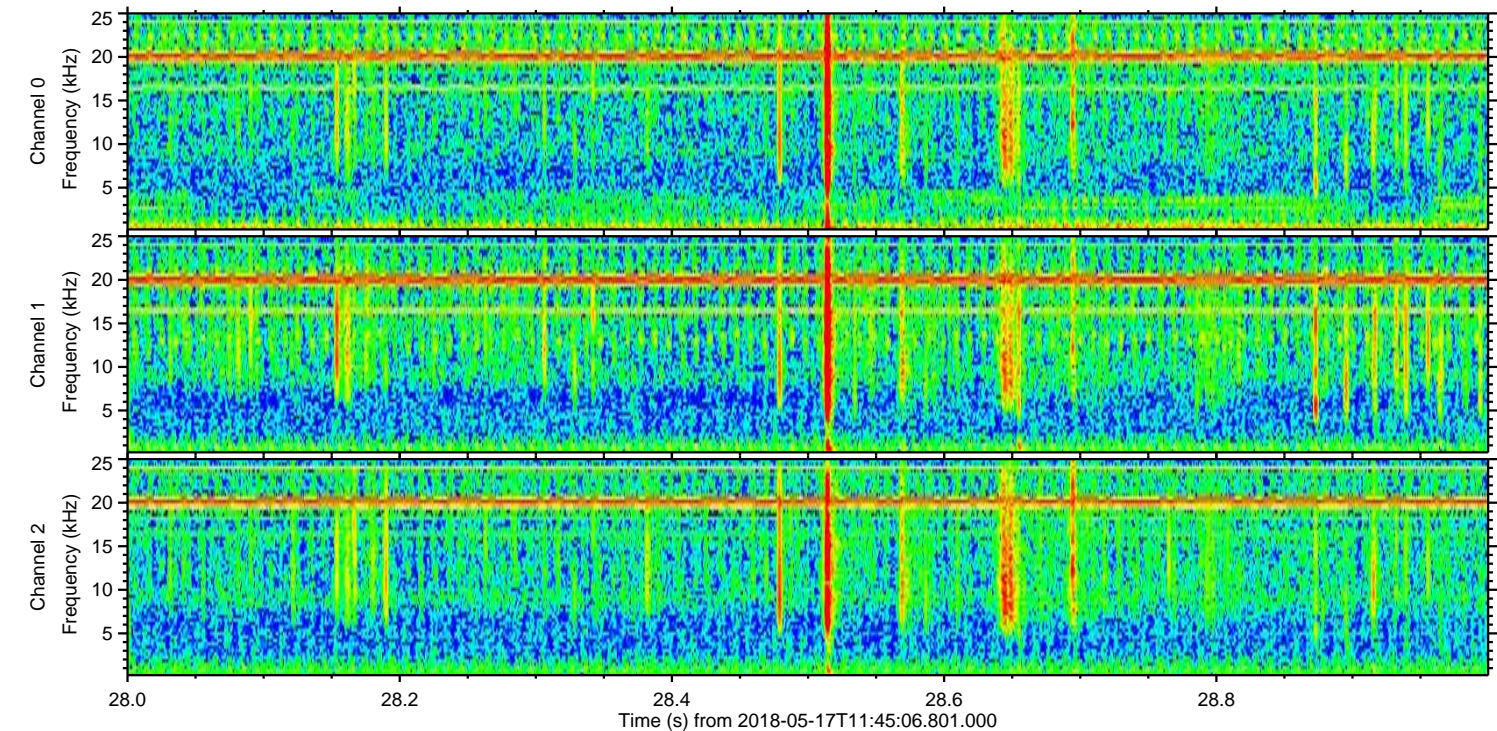
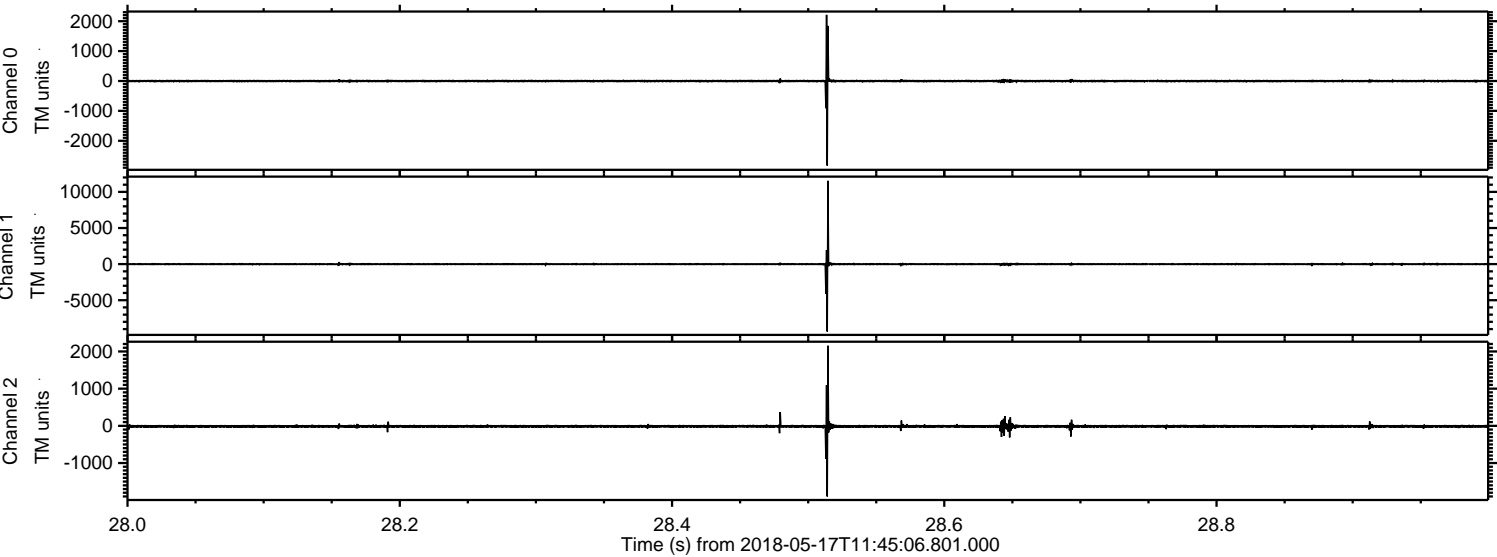
Processed Thu May 17 13:53:11 2018 by ELM ver.2012-10-06 from 001__elm20180517_114505__dat00.bin



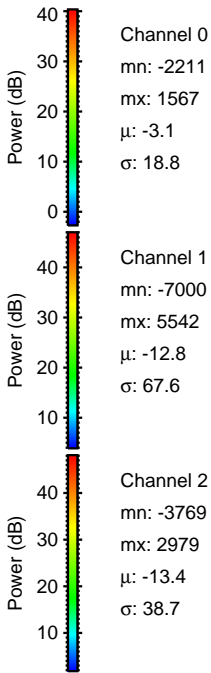
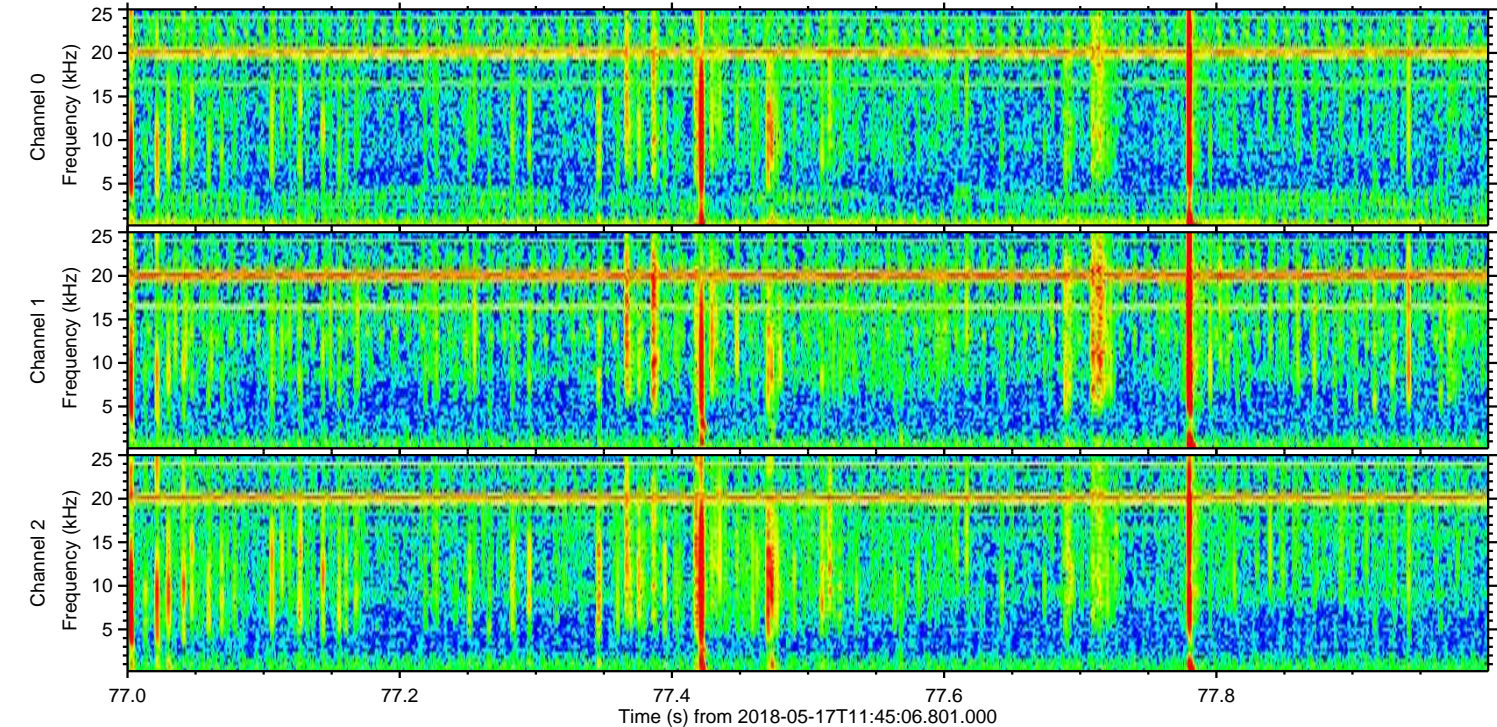
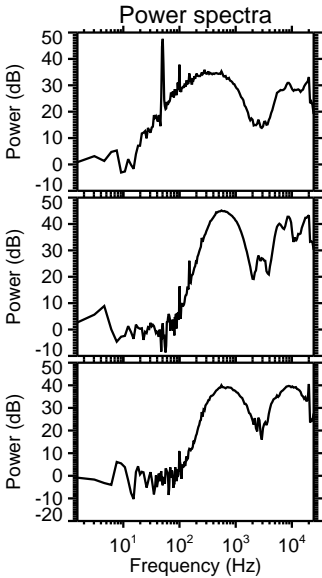
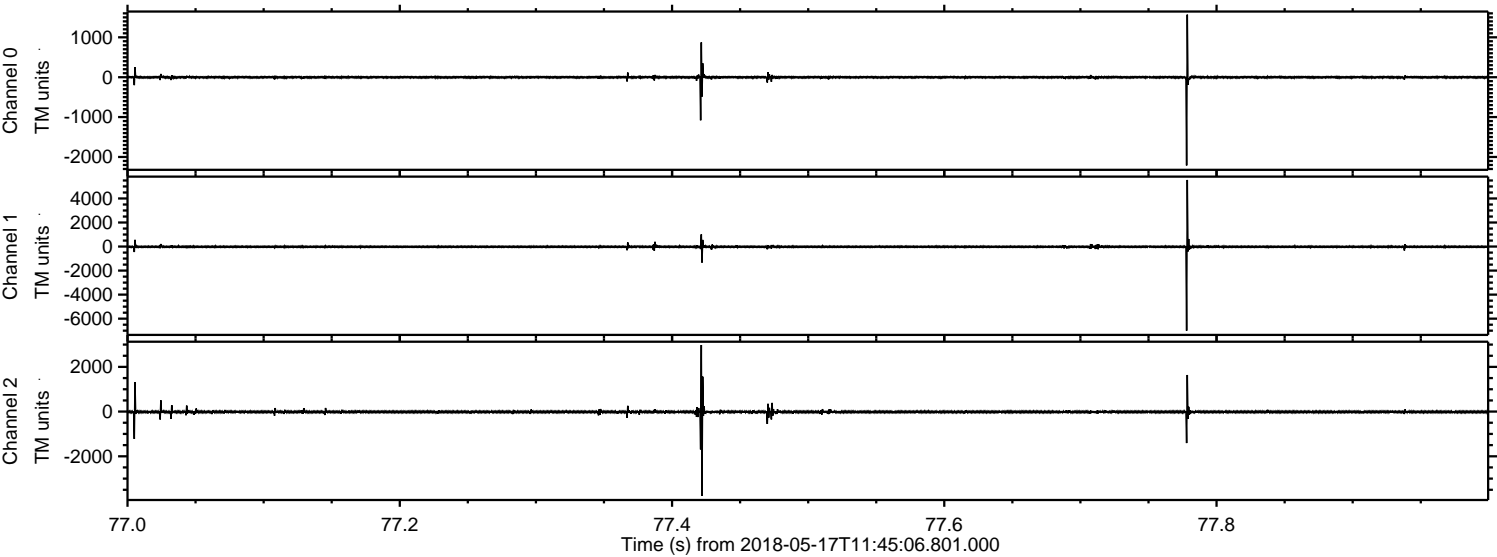
Processed Thu May 17 13:53:12 2018 by ELM ver.2012-10-06 from 001__elm20180517_114505__dat00.bin



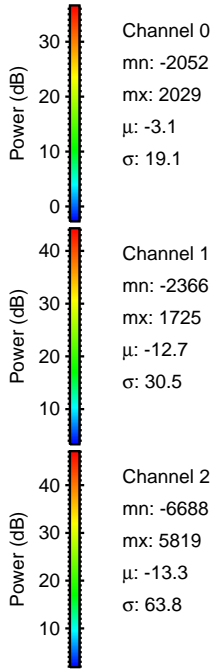
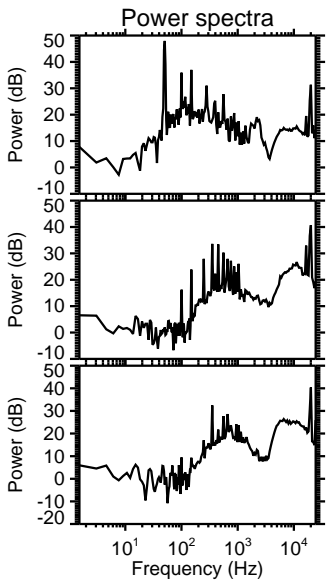
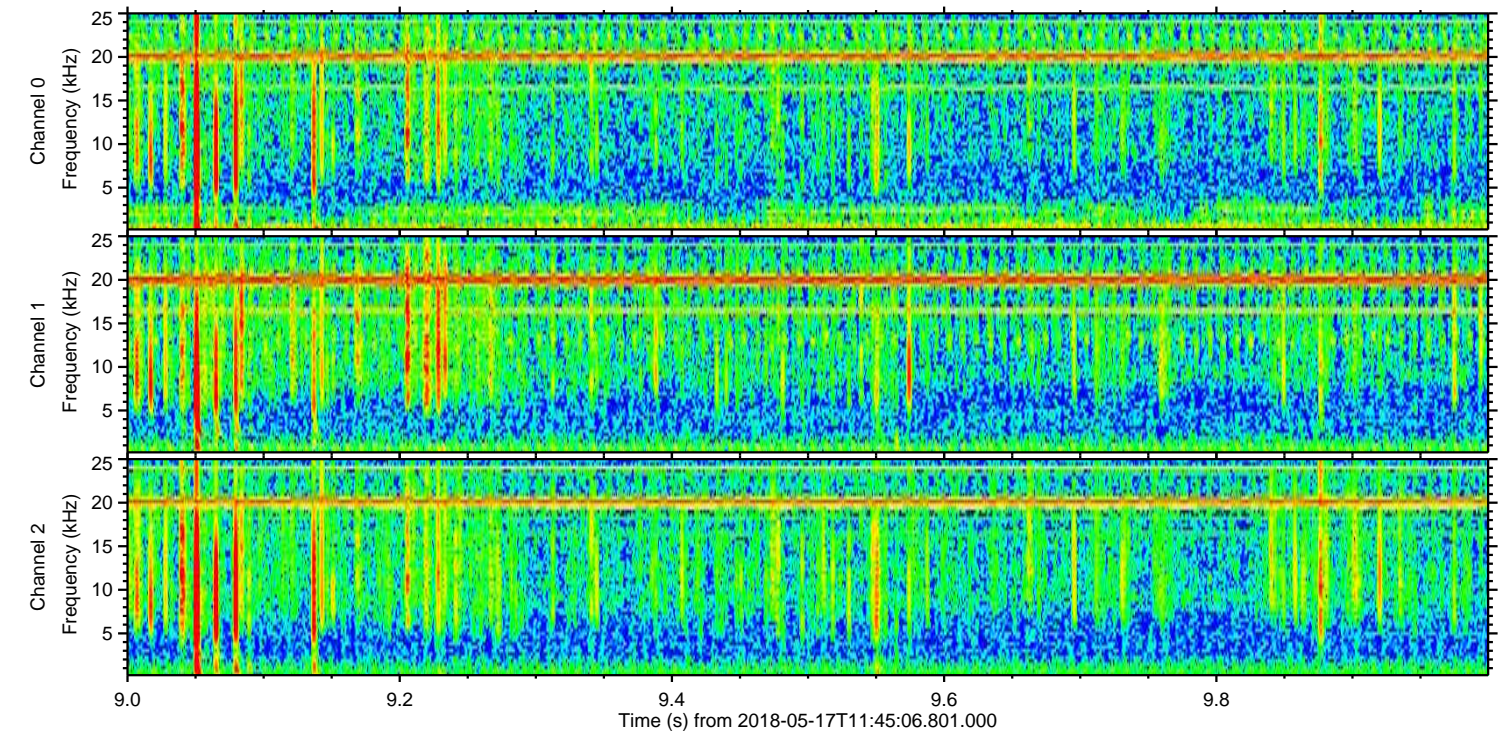
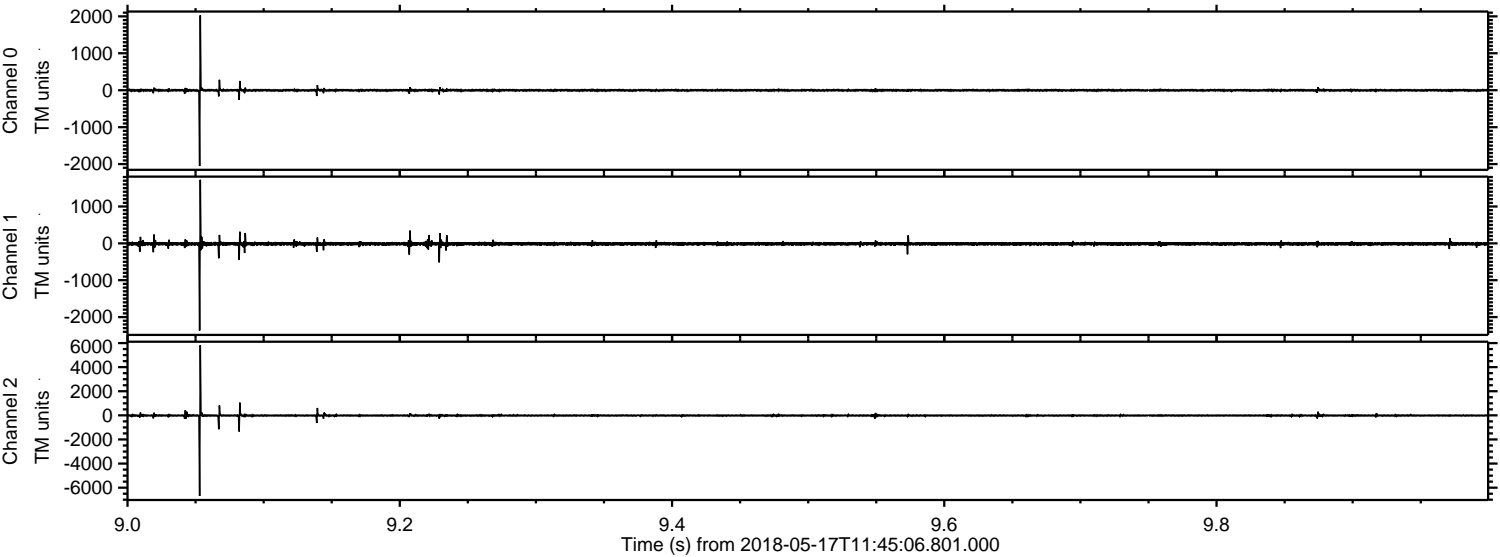
Processed Thu May 17 13:53:12 2018 by ELM ver.2012-10-06 from 001__elm20180517_114505__dat00.bin



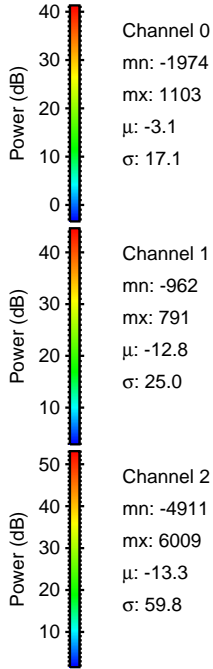
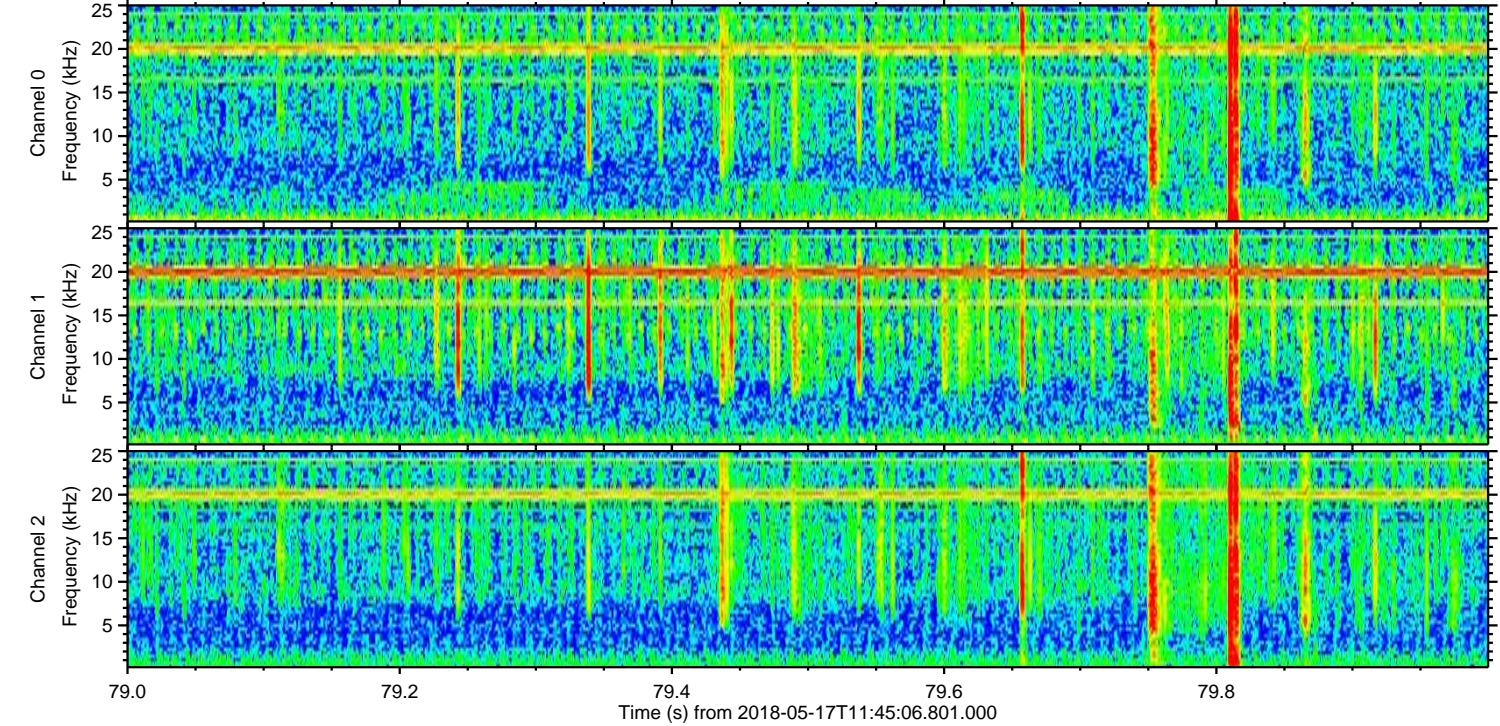
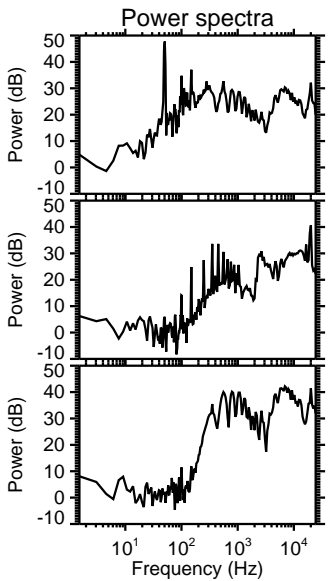
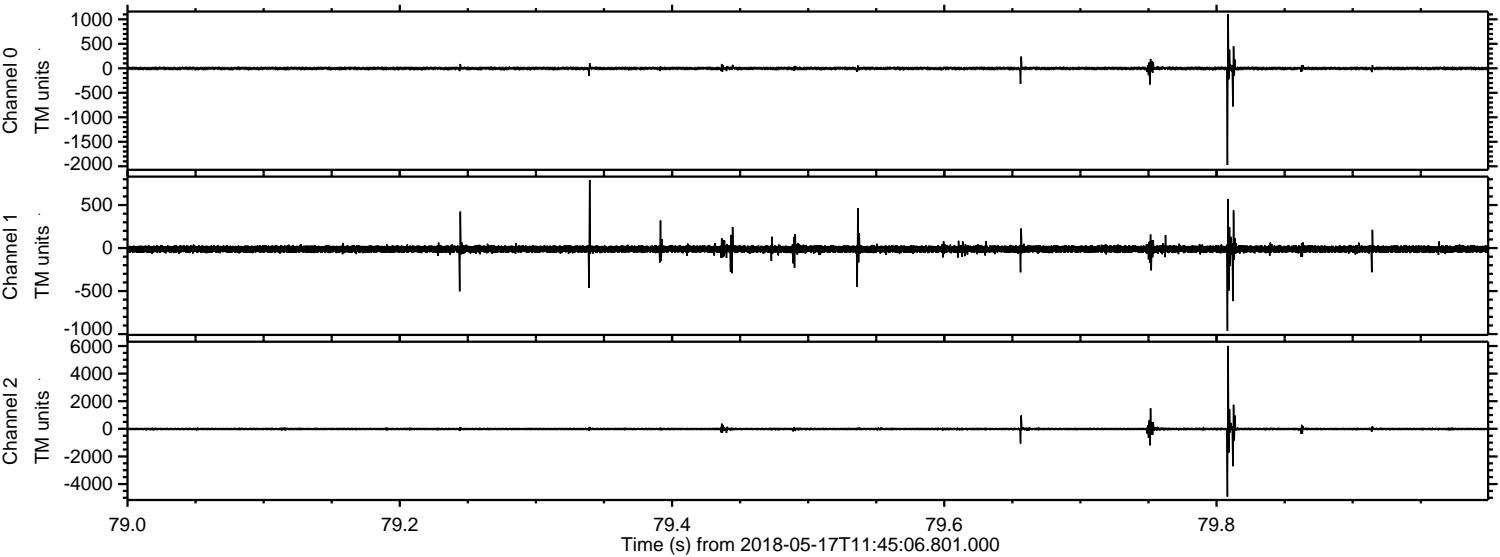
Processed Thu May 17 13:53:13 2018 by ELM ver.2012-10-06 from 001__elm20180517_114505__dat00.bin



Processed Thu May 17 13:53:14 2018 by ELM ver.2012-10-06 from 001__elm20180517_114505__dat00.bin

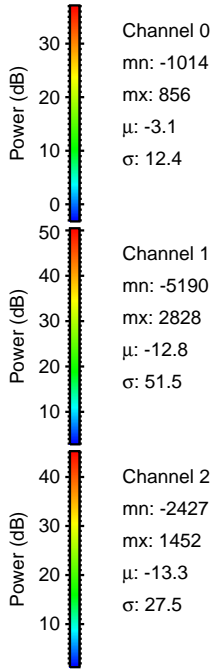
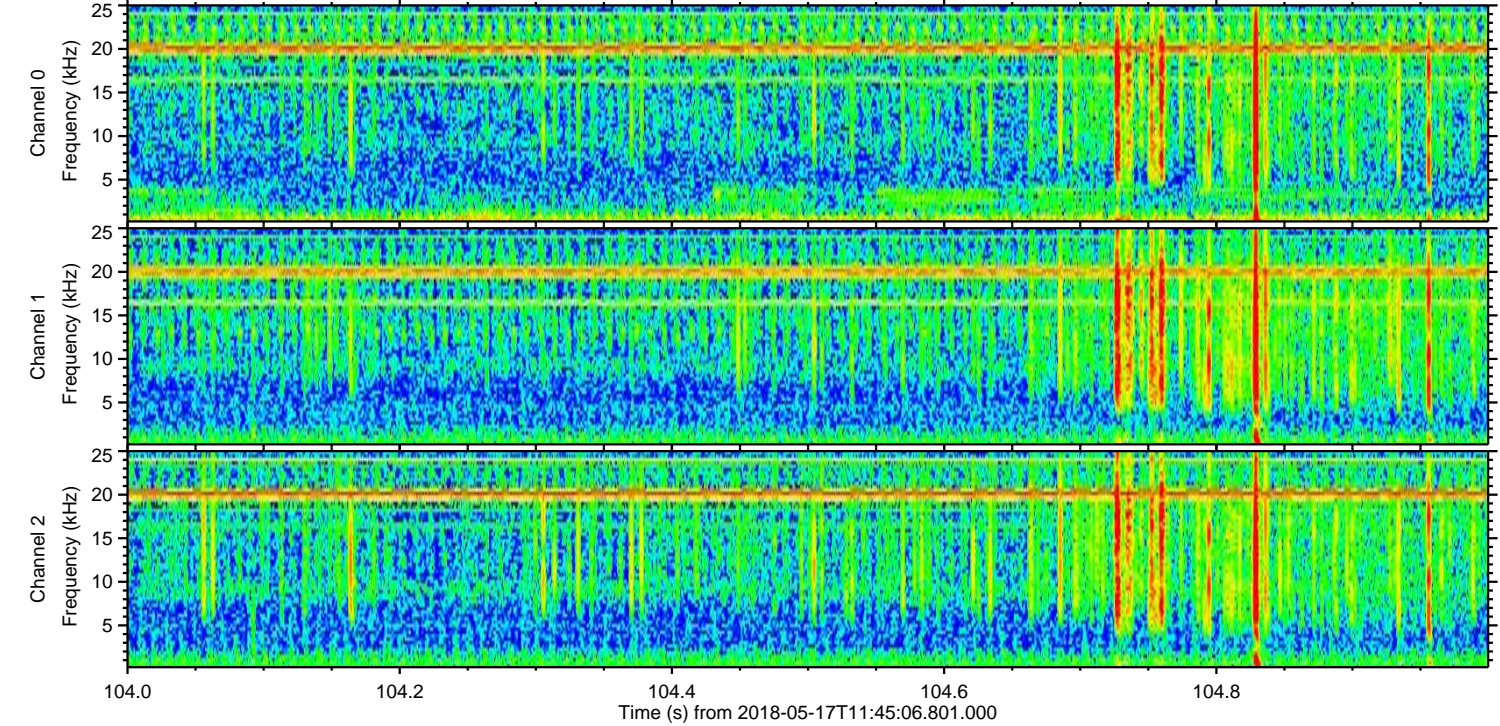
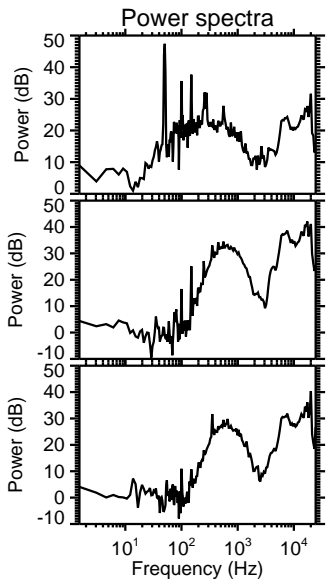
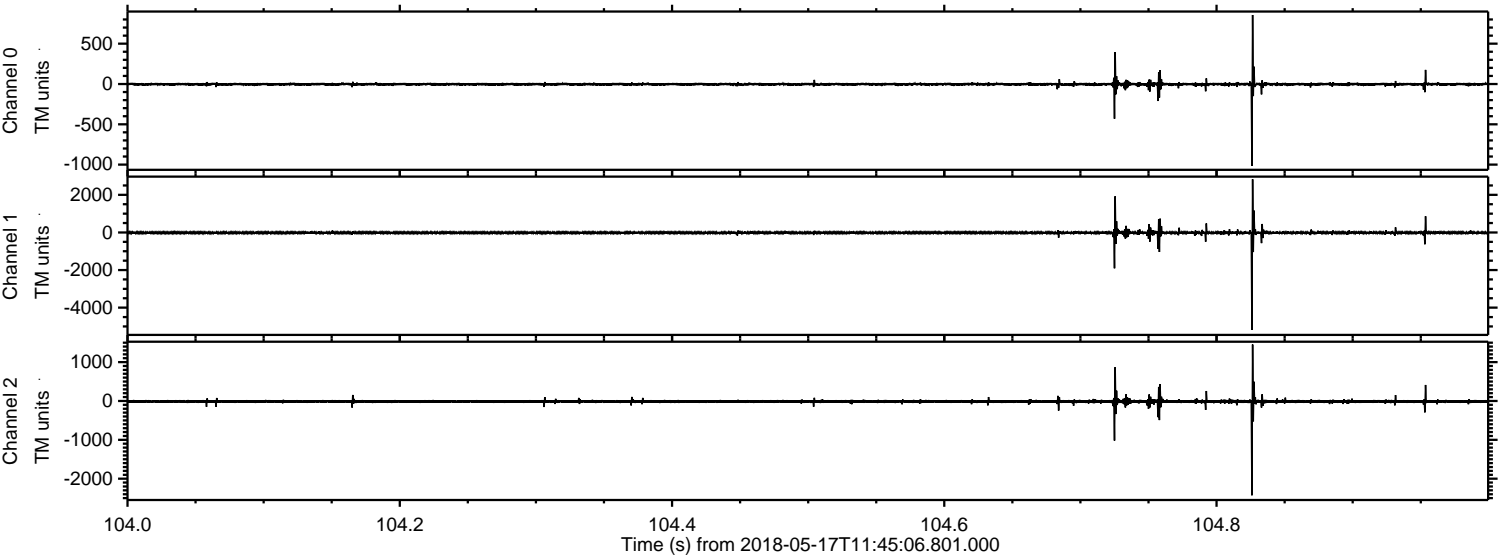


Processed Thu May 17 13:53:14 2018 by ELM ver.2012-10-06 from 001__elm20180517_114505__dat00.bin



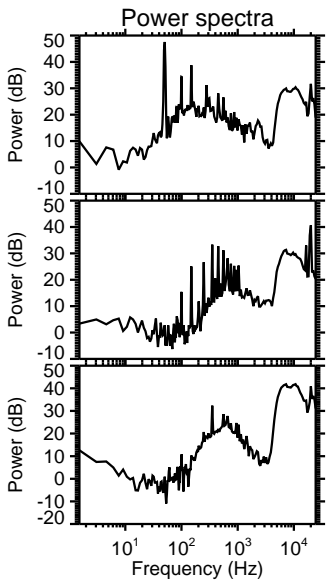
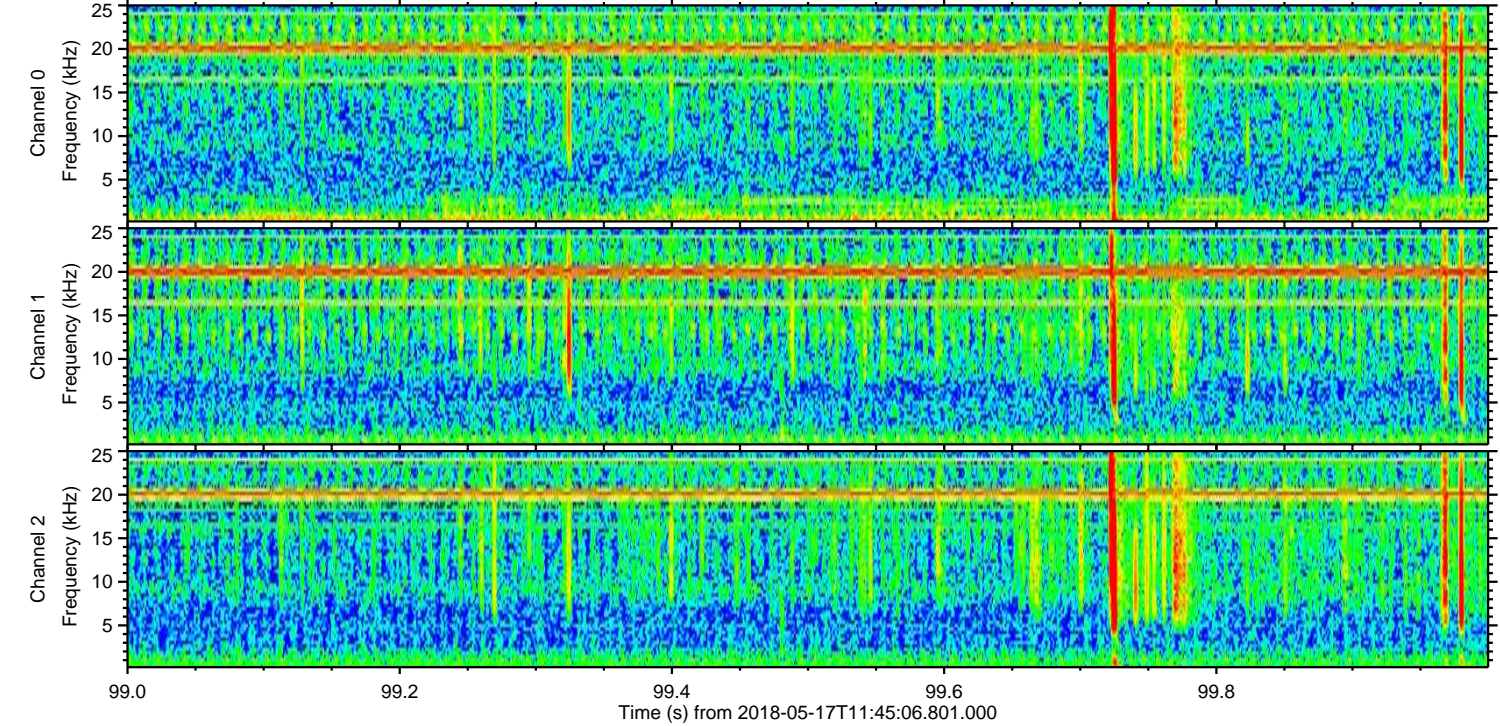
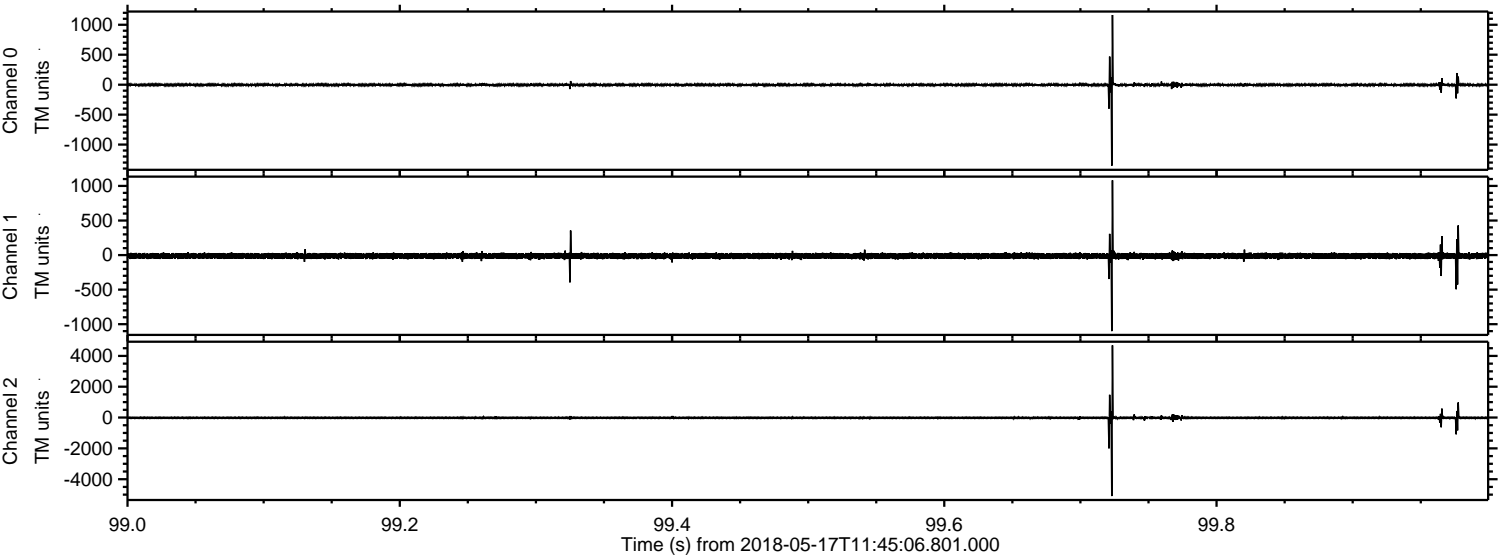
ELMAVAN 3D WAVEFORMS (Measured data sampled at 50 kHz) 50999 packets of 144 samples from 2018-05-17T11:45:06.801.000. Part 105/147

Processed Thu May 17 13:53:15 2018 by ELM ver.2012-10-06 from 001__elm20180517_114505__dat00.bin



ELMAVAN 3D WAVEFORMS (Measured data sampled at 50 kHz) 50999 packets of 144 samples from 2018-05-17T11:45:06.801.000. Part 100/147

Processed Thu May 17 13:53:15 2018 by ELM ver.2012-10-06 from 001__elm20180517_114505__dat00.bin



Channel 0
mn: -1354
mx: 1163
 μ : -3.1
 σ : 14.0

Channel 1
mn: -1100
mx: 1081
 μ : -12.8
 σ : 22.9

Channel 2
mn: -5095
mx: 4686
 μ : -13.3
 σ : 48.4

