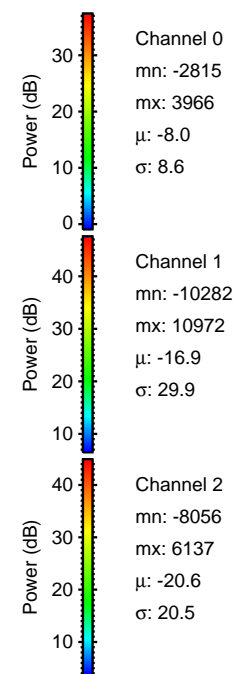
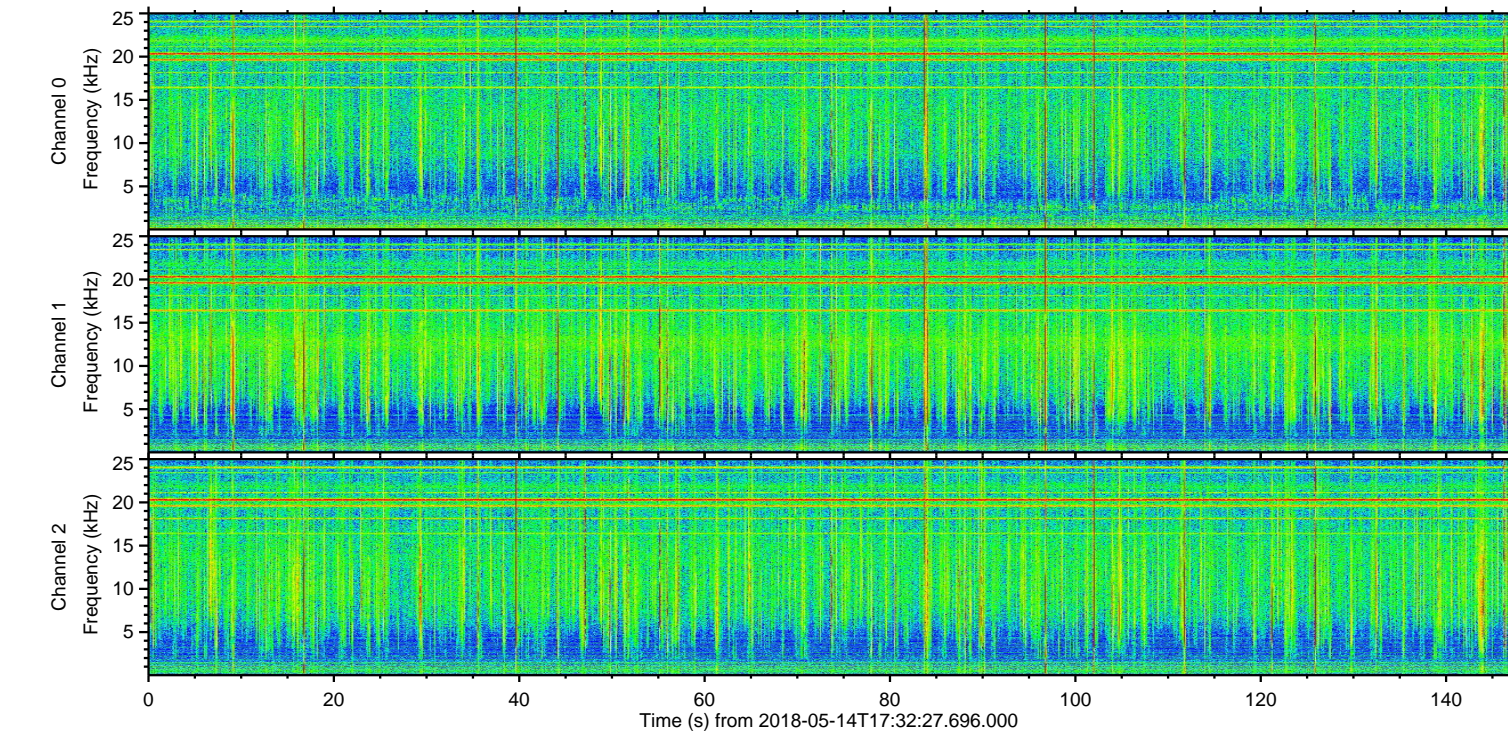
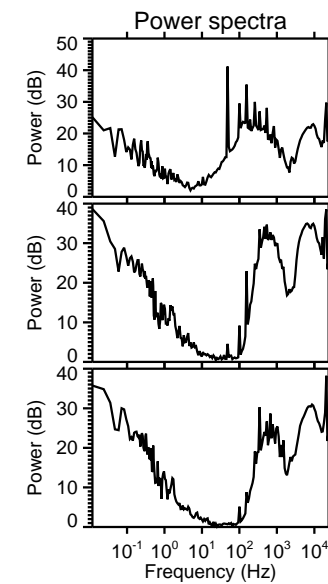
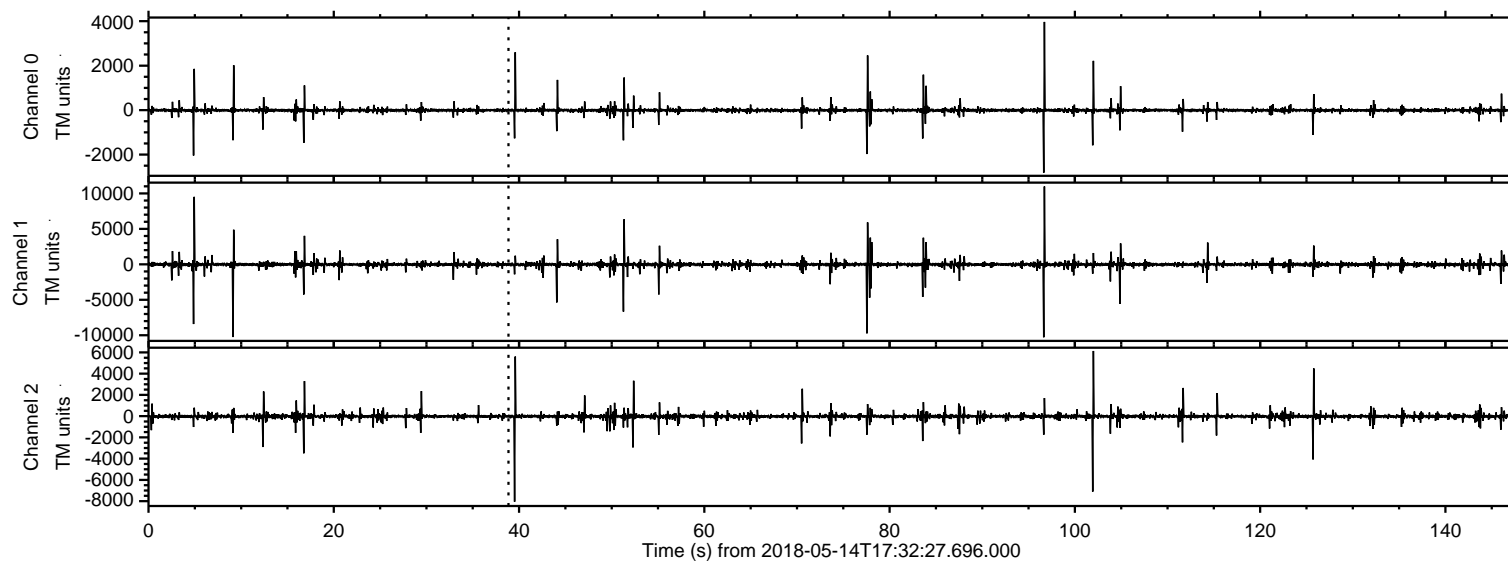
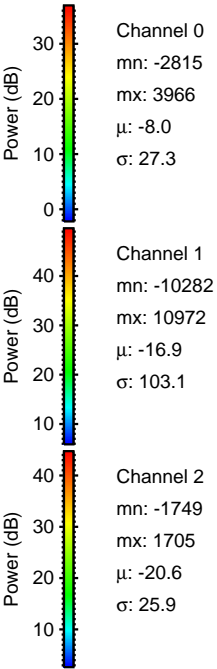
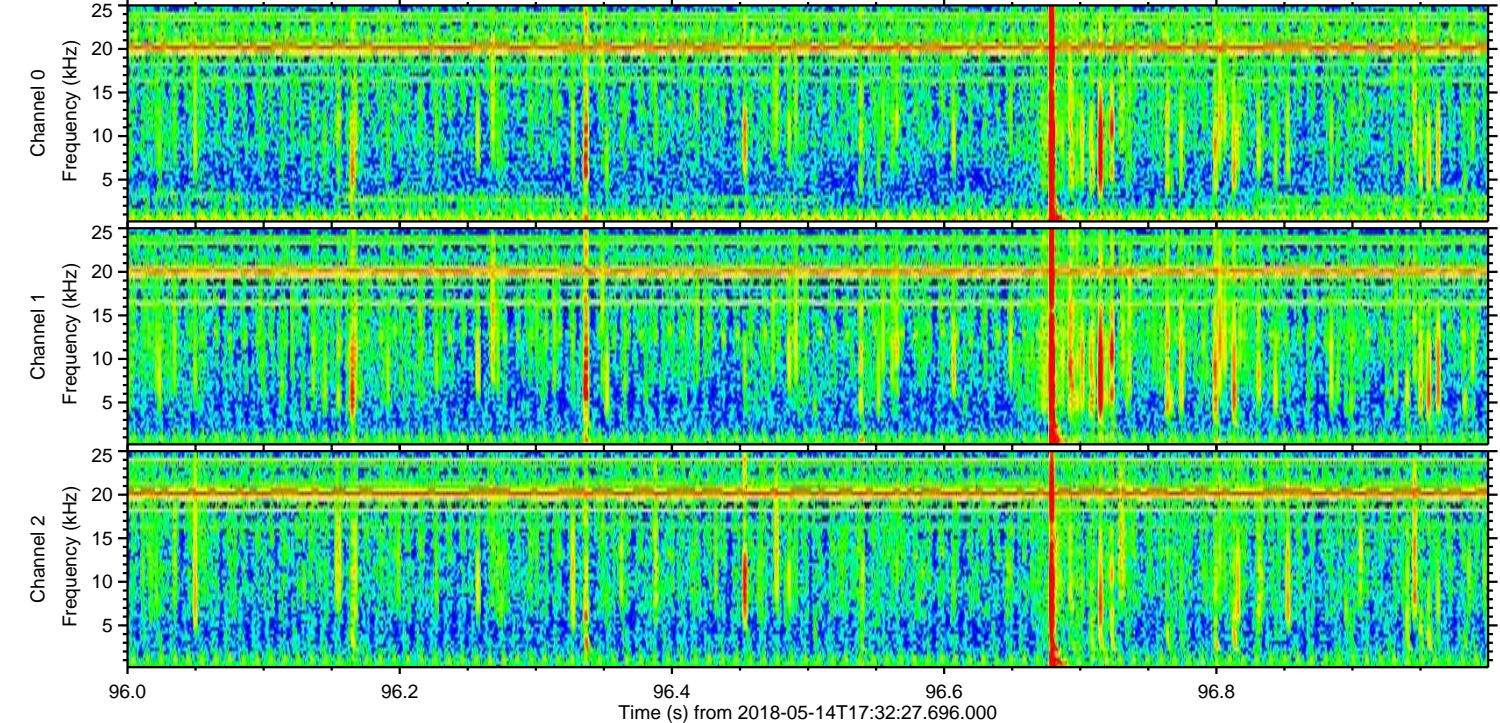
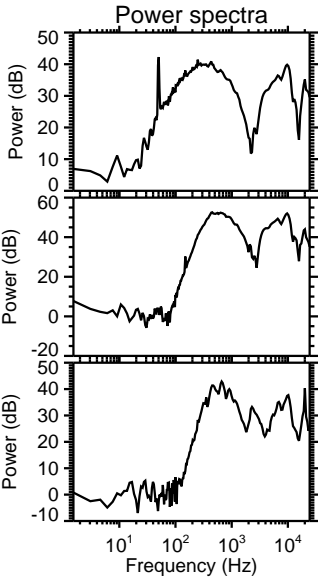
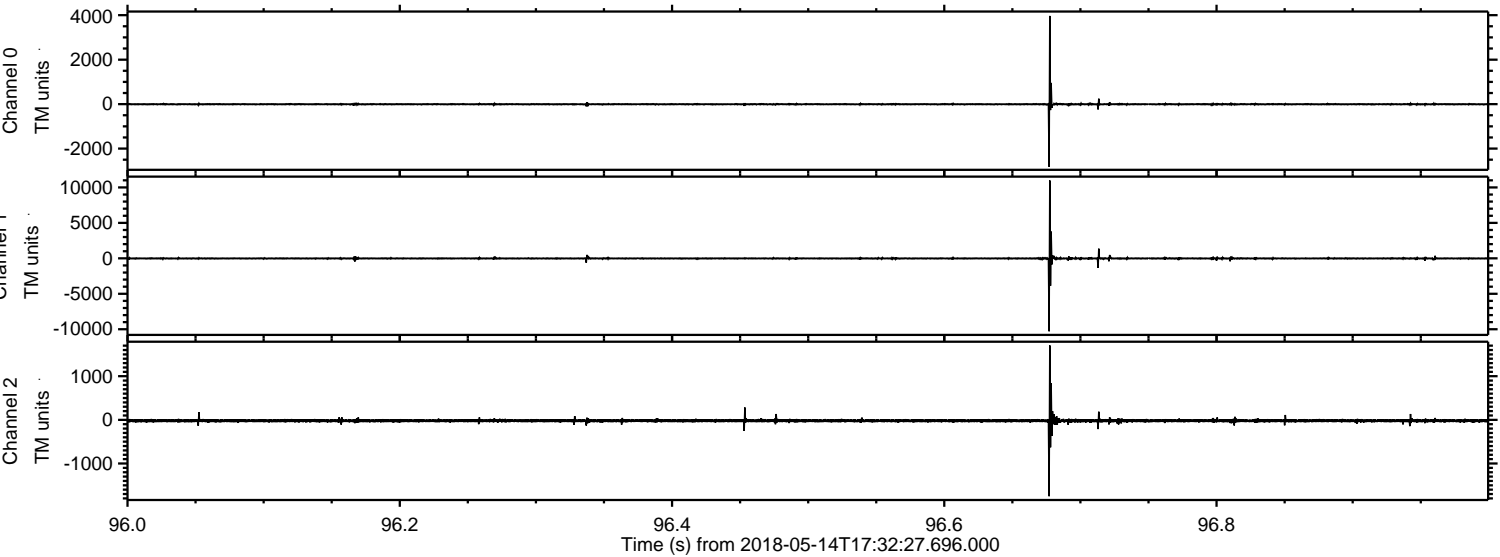


ELMAVAN 3D WAVEFORMS (Measured data sampled at 50 kHz) 50999 packets of 144 samples from 2018-05-14T17:32:27.696.000.

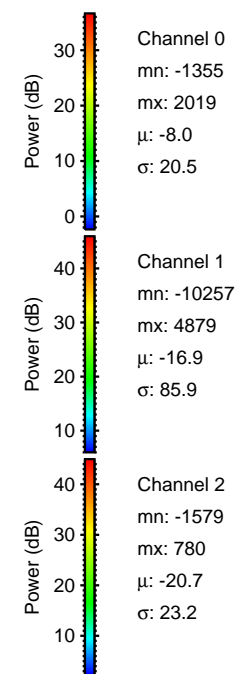
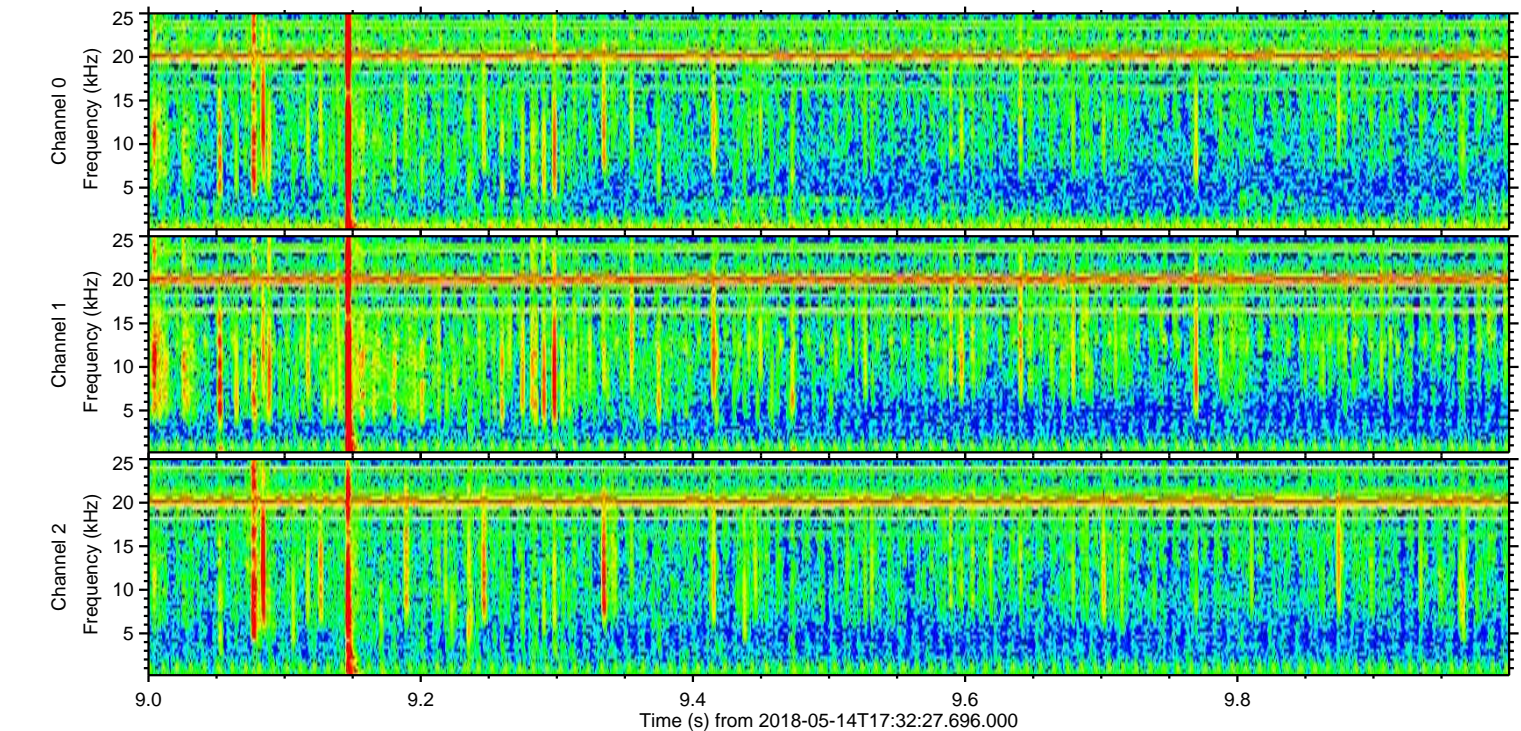
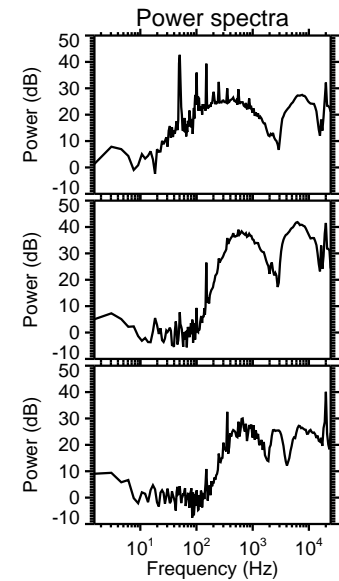
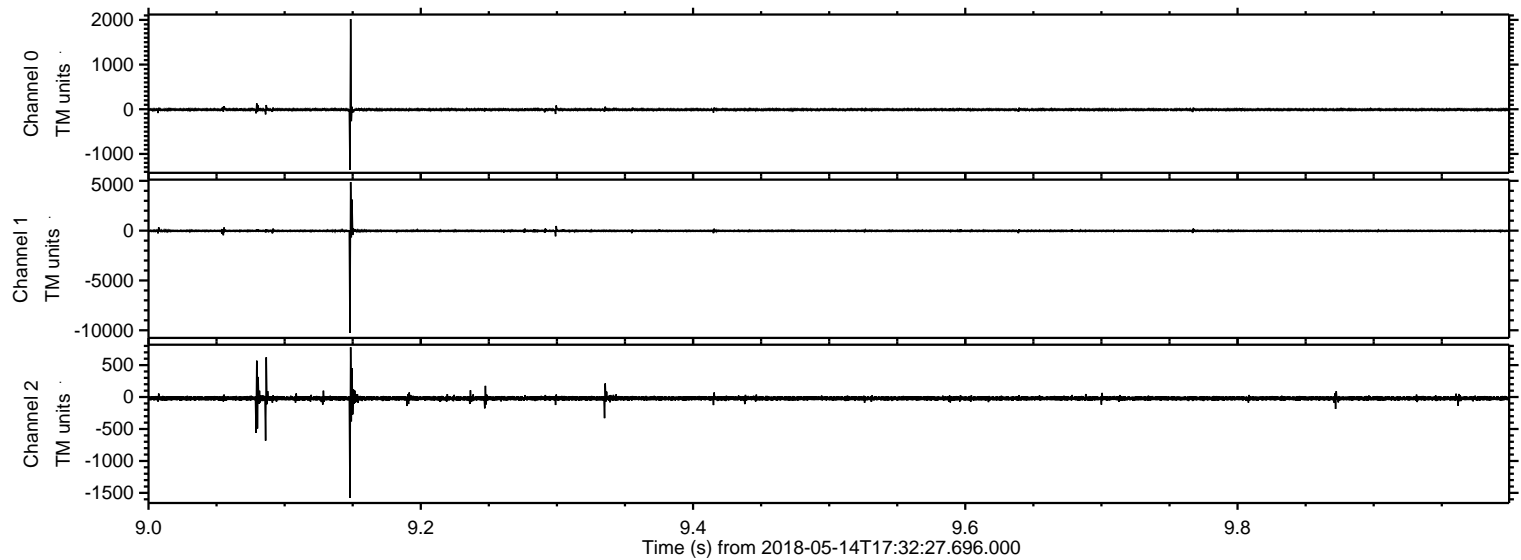
Processed Mon May 14 19:41:04 2018 by ELM ver.2012-10-06 from 001__elm20180514_173226__dat00.bin



Processed Mon May 14 19:41:12 2018 by ELM ver.2012-10-06 from 001__elm20180514_173226__dat00.bin

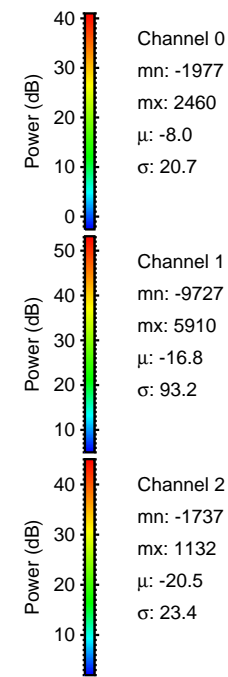
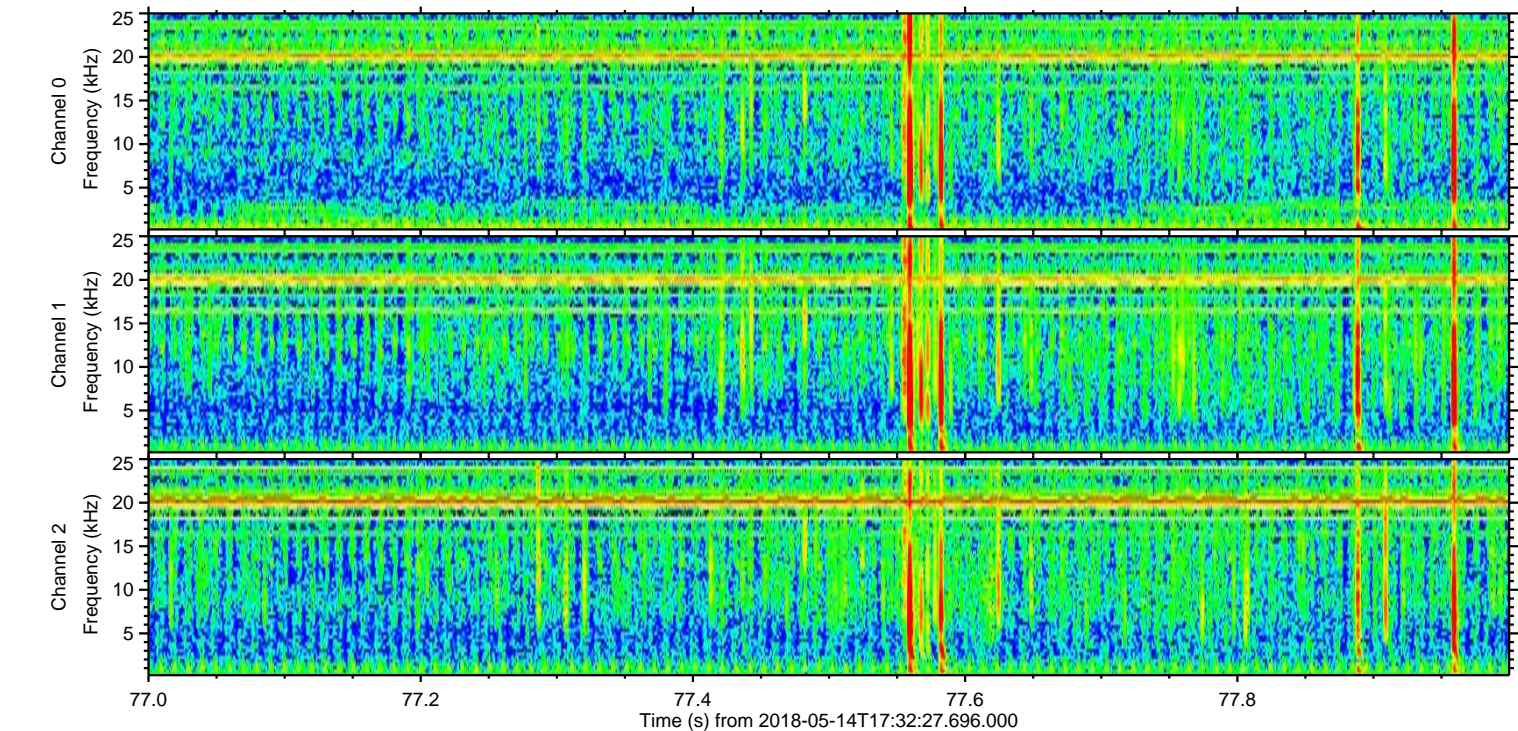
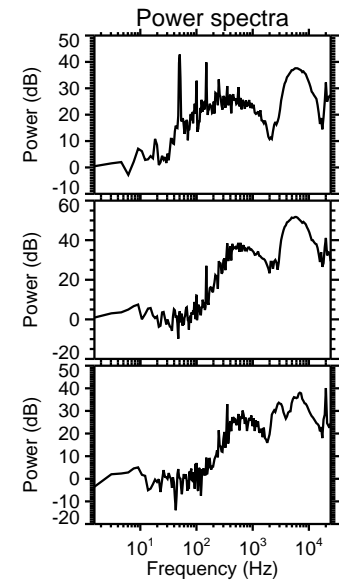
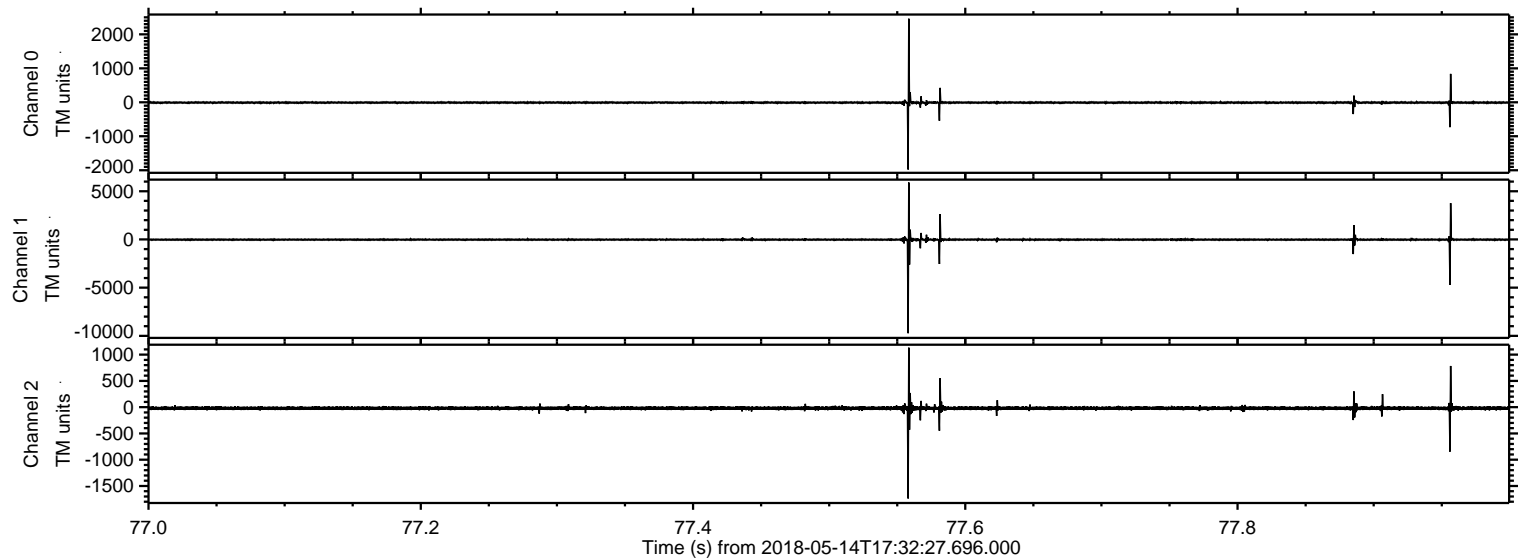


Processed Mon May 14 19:41:13 2018 by ELM ver.2012-10-06 from 001__elm20180514_173226__dat00.bin

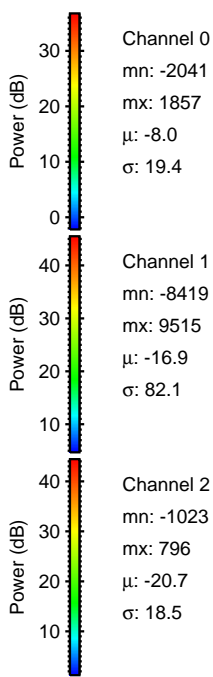
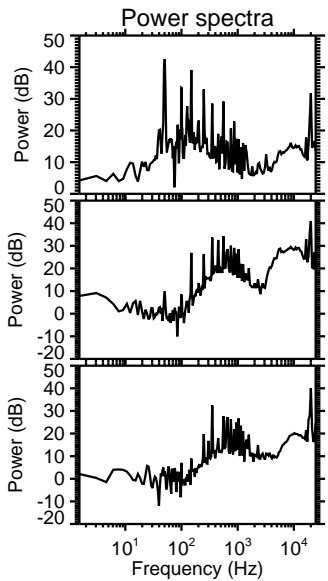
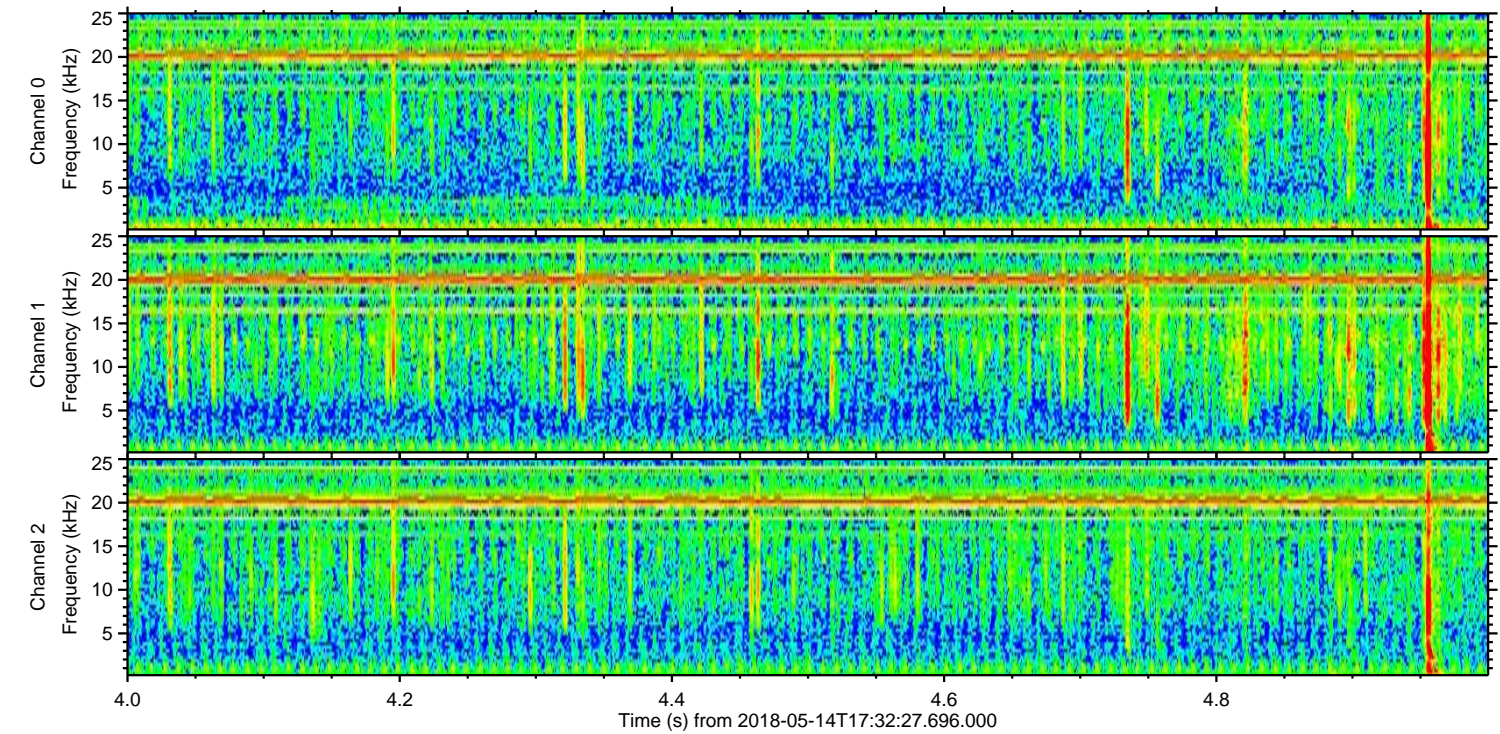
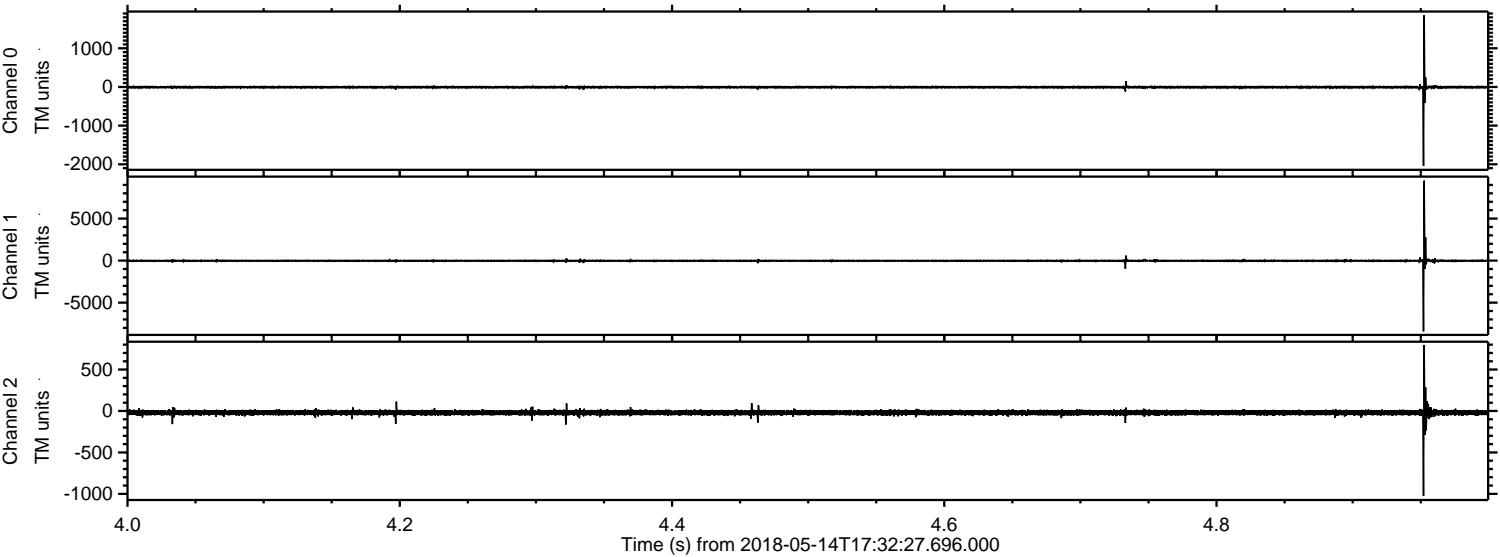


ELMAVAN 3D WAVEFORMS (Measured data sampled at 50 kHz) 50999 packets of 144 samples from 2018-05-14T17:32:27.696.000. Part 78/147

Processed Mon May 14 19:41:14 2018 by ELM ver.2012-10-06 from 001__elm20180514_173226__dat00.bin

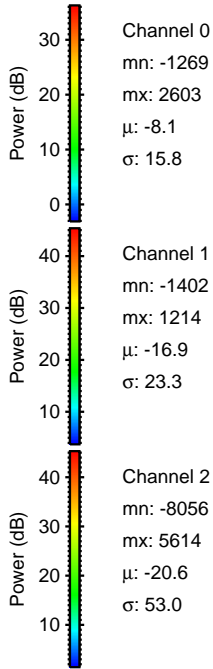
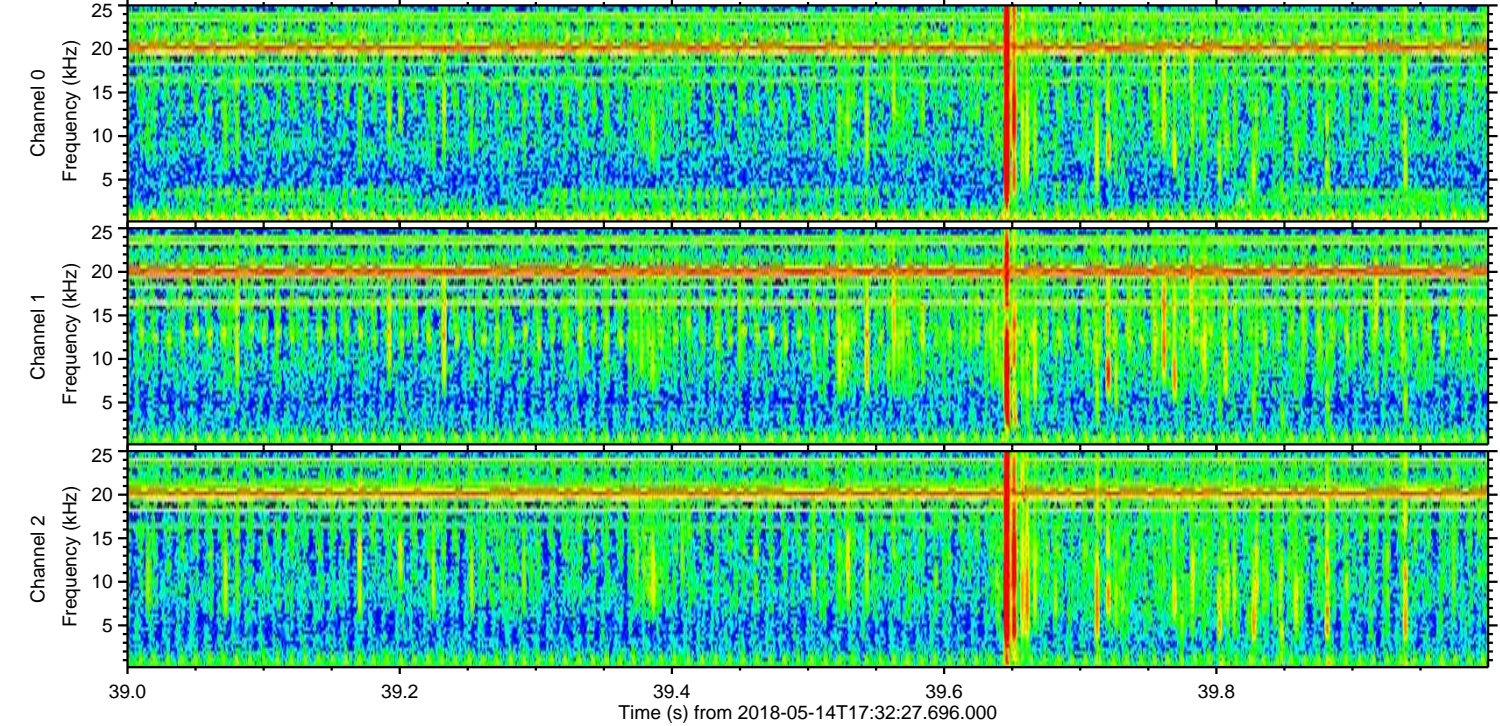
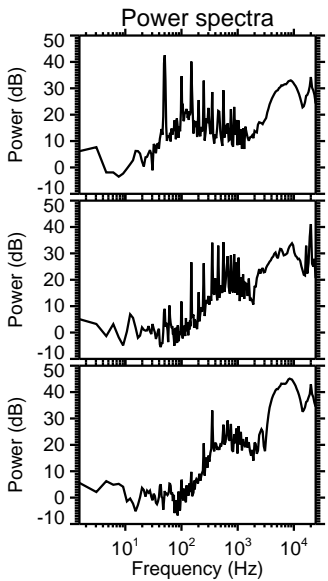
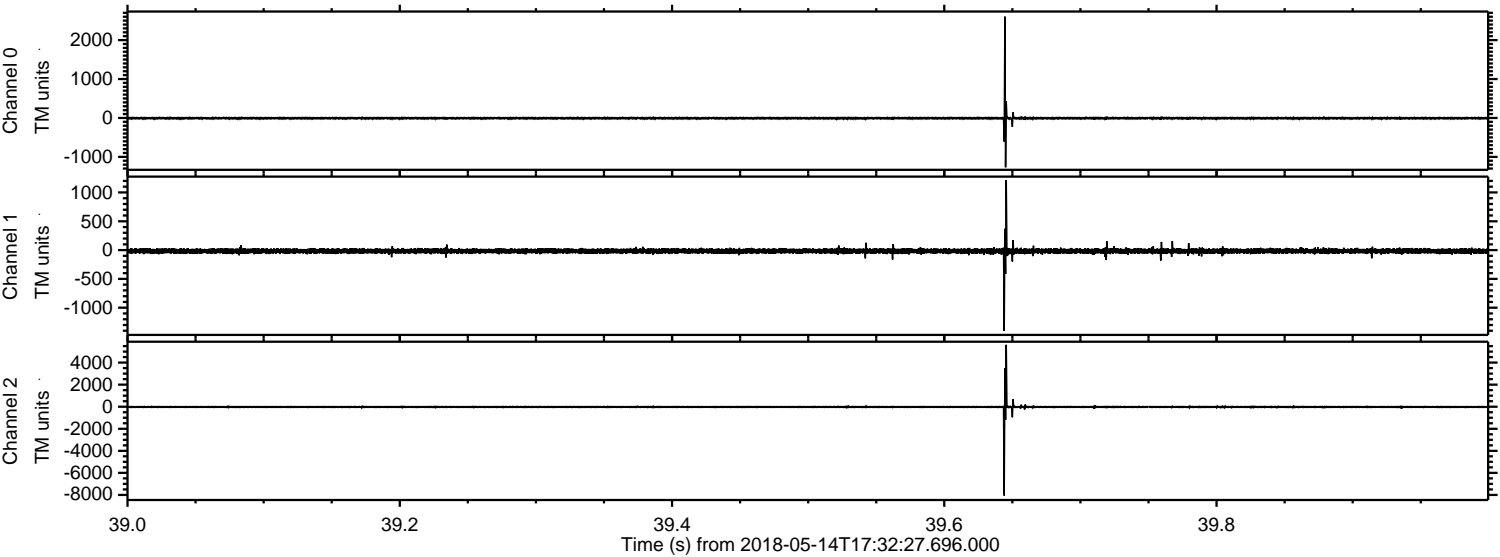


Processed Mon May 14 19:41:15 2018 by ELM ver.2012-10-06 from 001__elm20180514_173226__dat00.bin



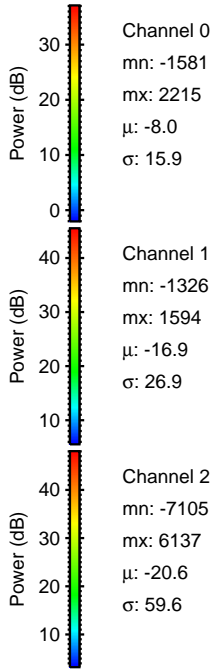
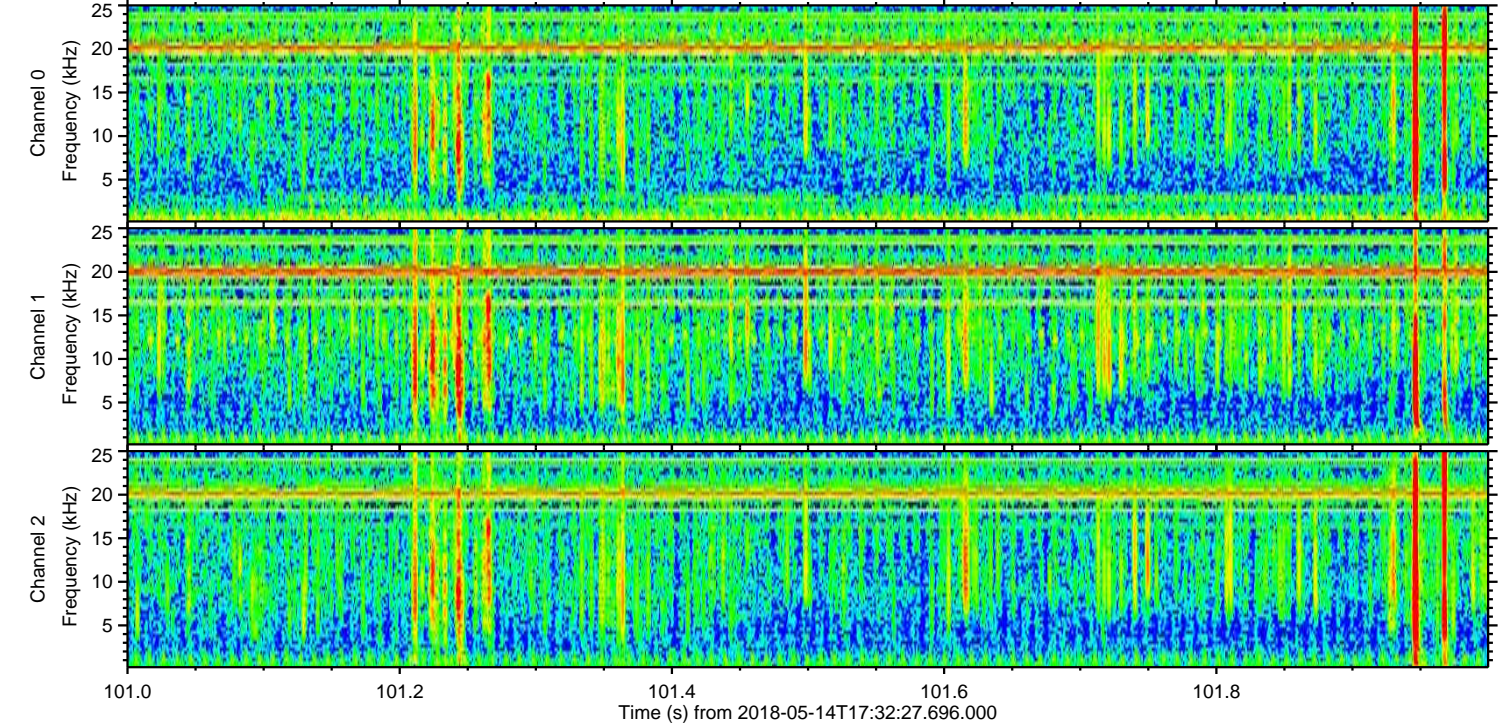
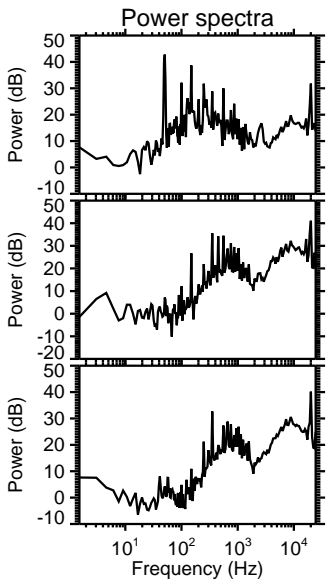
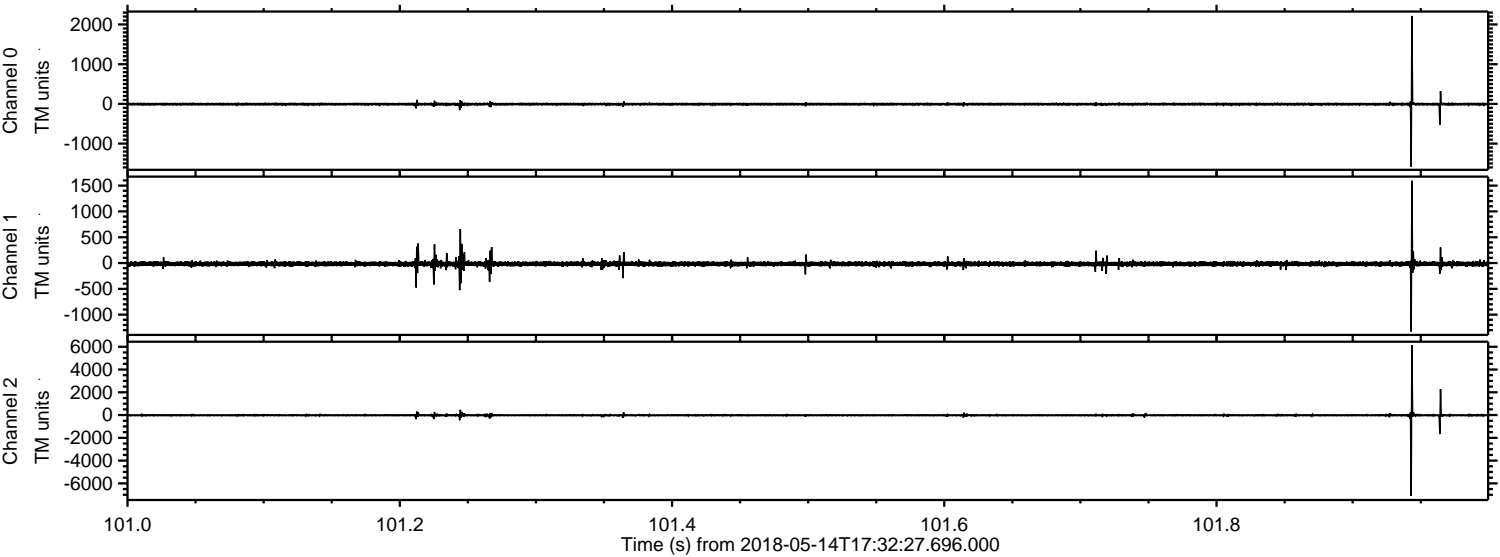
ELMAVAN 3D WAVEFORMS (Measured data sampled at 50 kHz) 50999 packets of 144 samples from 2018-05-14T17:32:27.696.000. Part 40/147

Processed Mon May 14 19:41:15 2018 by ELM ver.2012-10-06 from 001__elm20180514_173226__dat00.bin

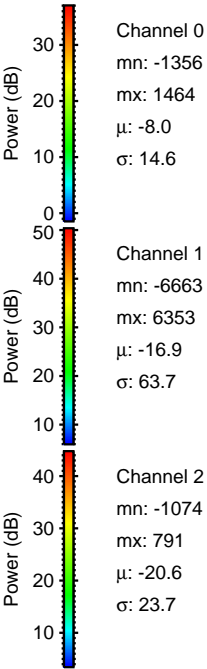
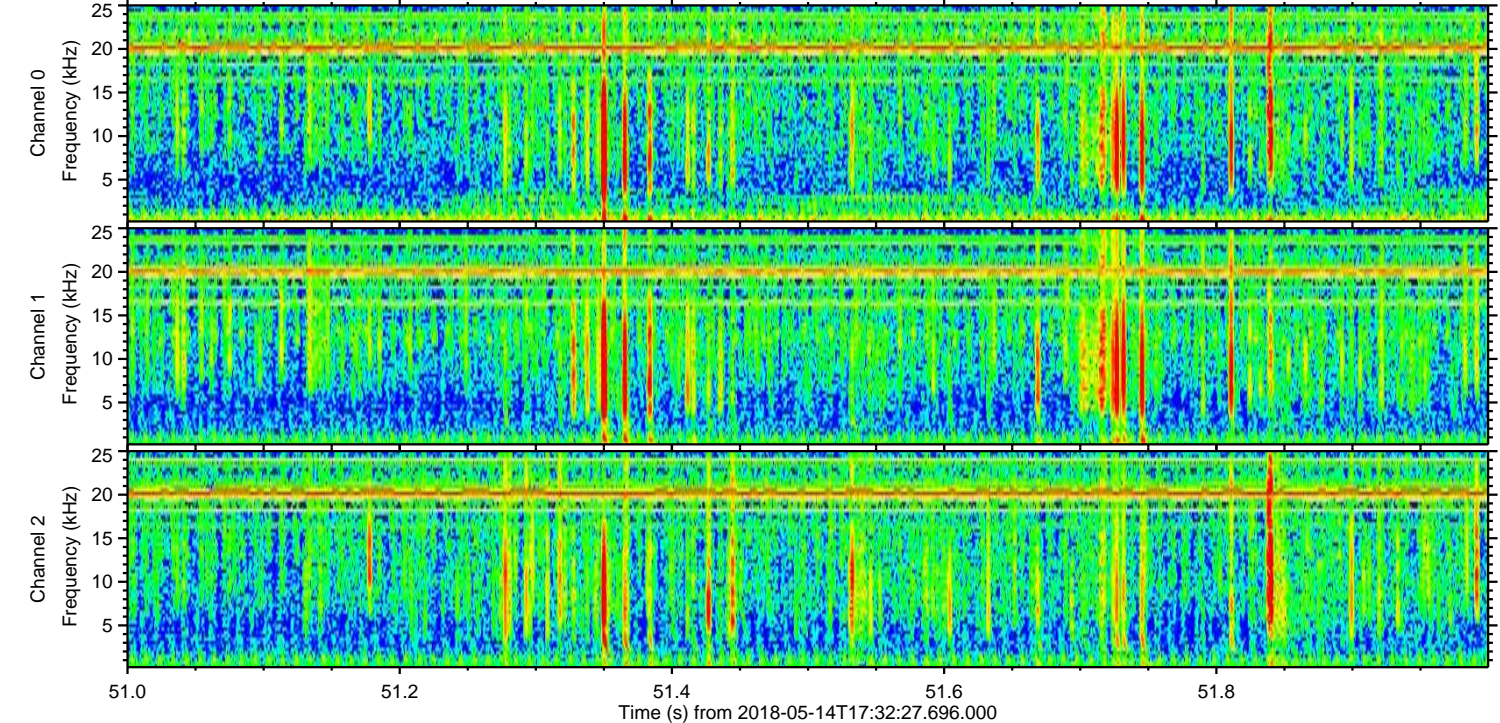
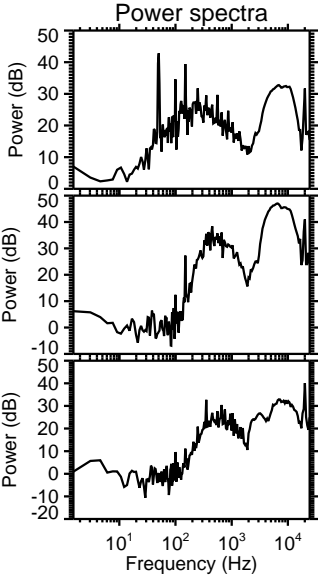
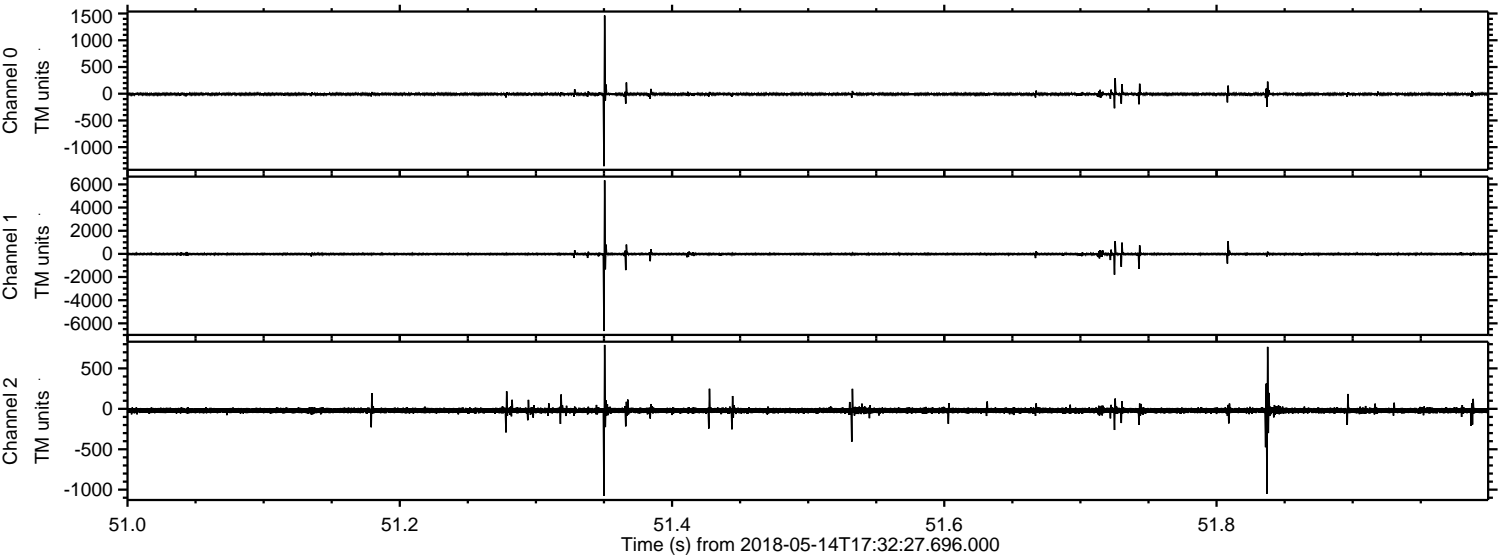


ELMAVAN 3D WAVEFORMS (Measured data sampled at 50 kHz) 50999 packets of 144 samples from 2018-05-14T17:32:27.696.000. Part 102/147

Processed Mon May 14 19:41:16 2018 by ELM ver.2012-10-06 from 001__elm20180514_173226__dat00.bin

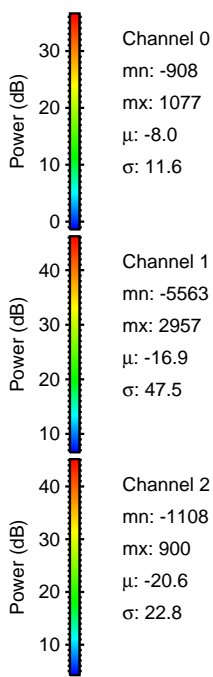
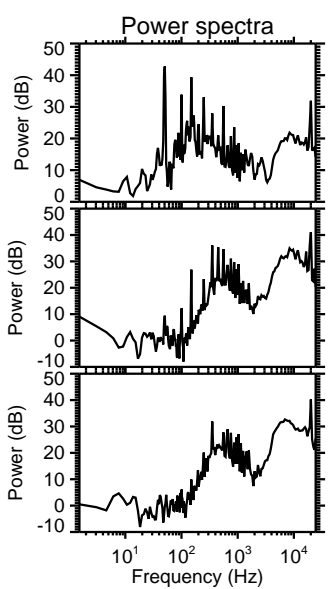
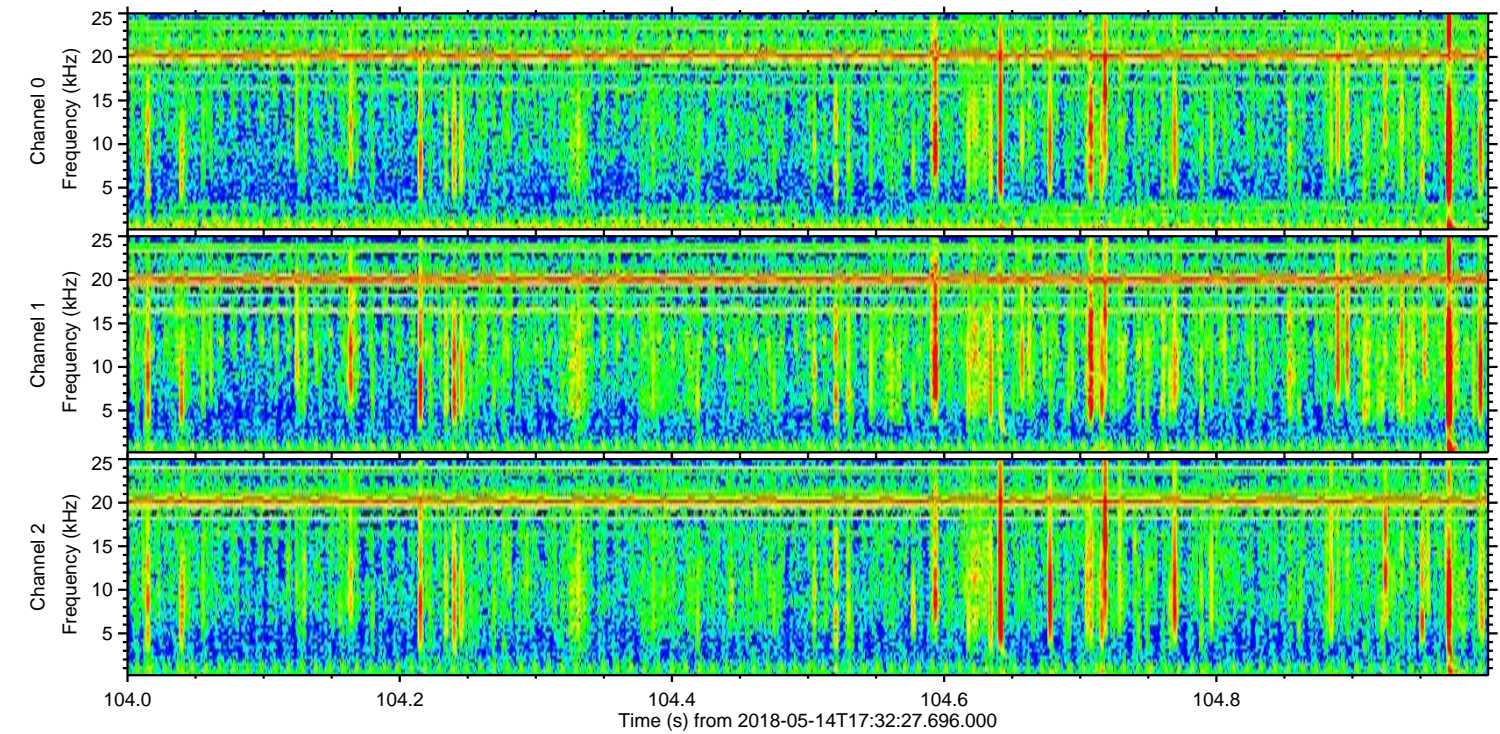
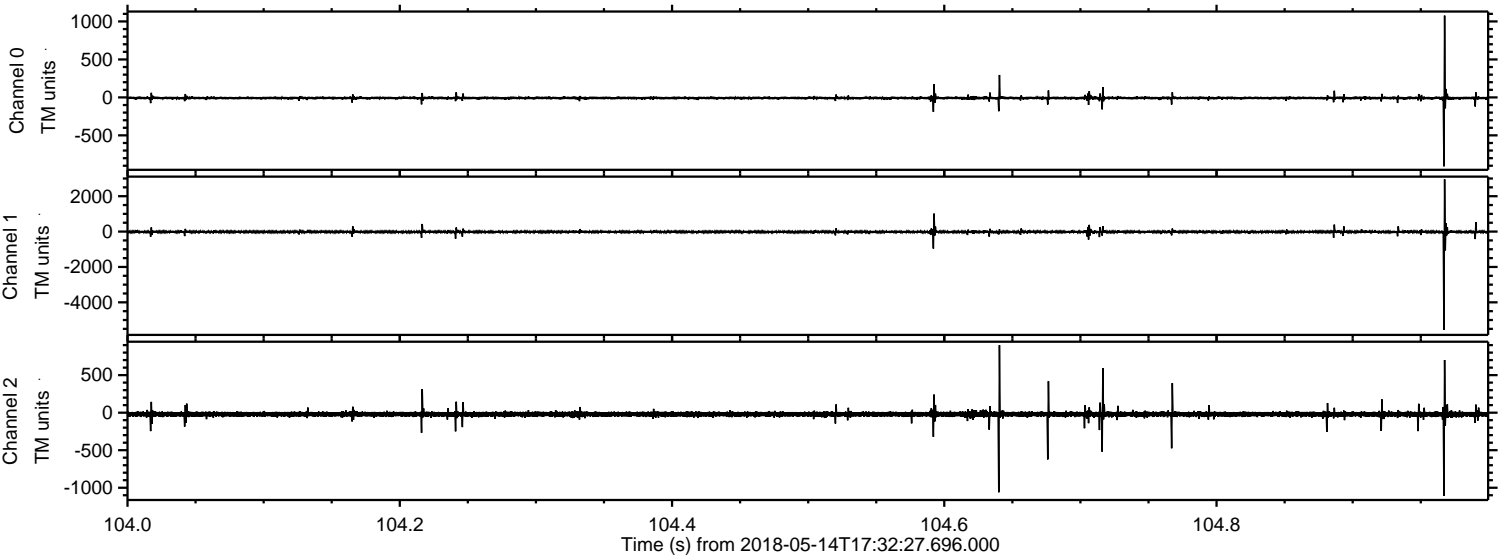


Processed Mon May 14 19:41:16 2018 by ELM ver.2012-10-06 from 001__elm20180514_173226__dat00.bin



ELMAVAN 3D WAVEFORMS (Measured data sampled at 50 kHz) 50999 packets of 144 samples from 2018-05-14T17:32:27.696.000. Part 105/147

Processed Mon May 14 19:41:17 2018 by ELM ver.2012-10-06 from 001__elm20180514_173226__dat00.bin



Channel 0
mn: -908
mx: 1077
 μ : -8.0
 σ : 11.6

Channel 1
mn: -5563
mx: 2957
 μ : -16.9
 σ : 47.5

Channel 2
mn: -1108
mx: 900
 μ : -20.6
 σ : 22.8

Processed Mon May 14 19:41:18 2018 by ELM ver.2012-10-06 from 001__elm20180514_173226__dat00.bin

