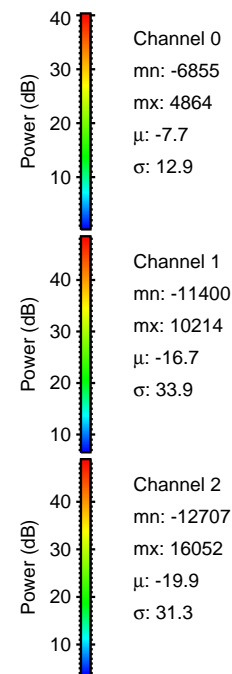
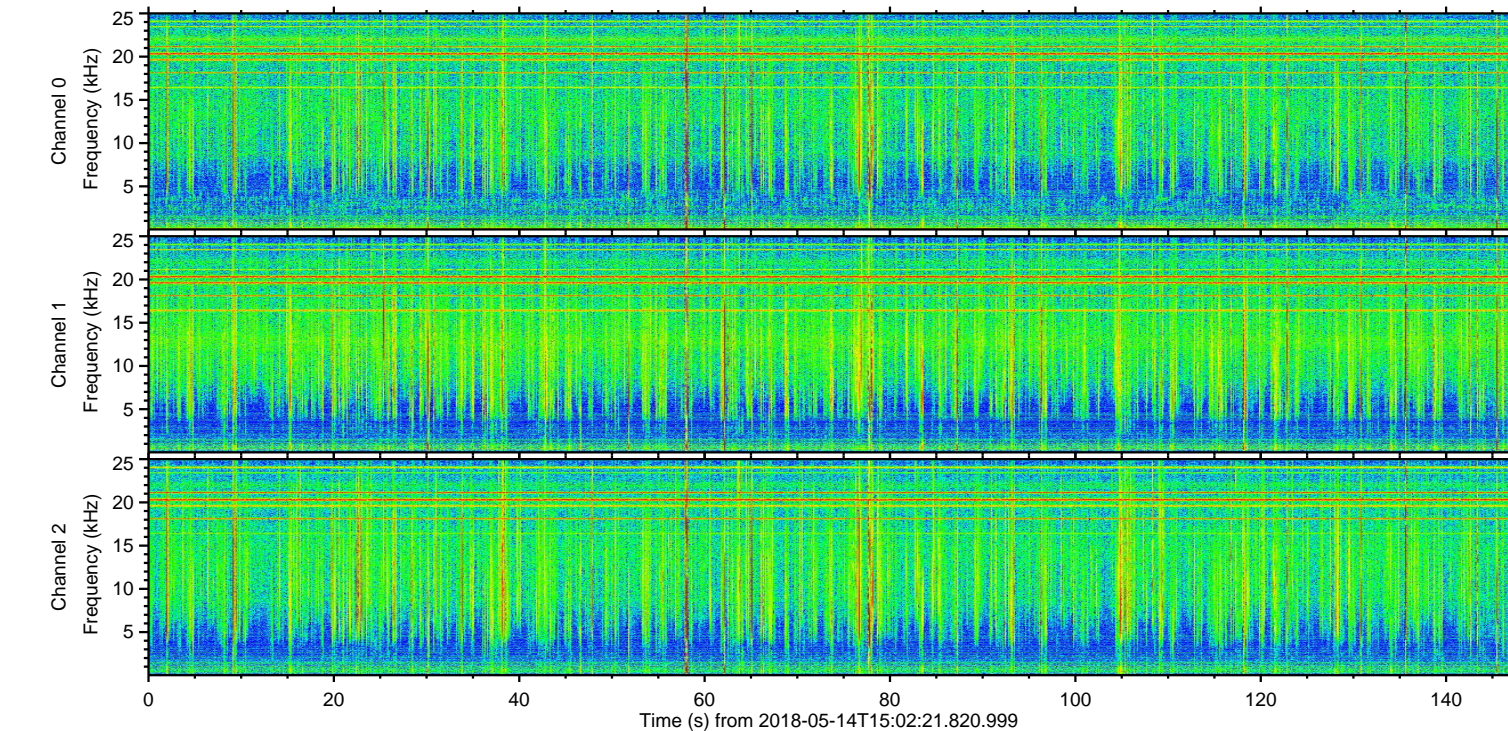
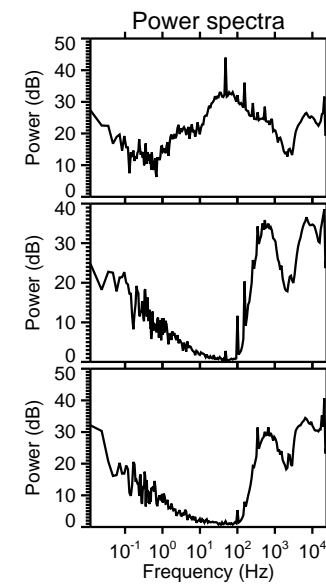
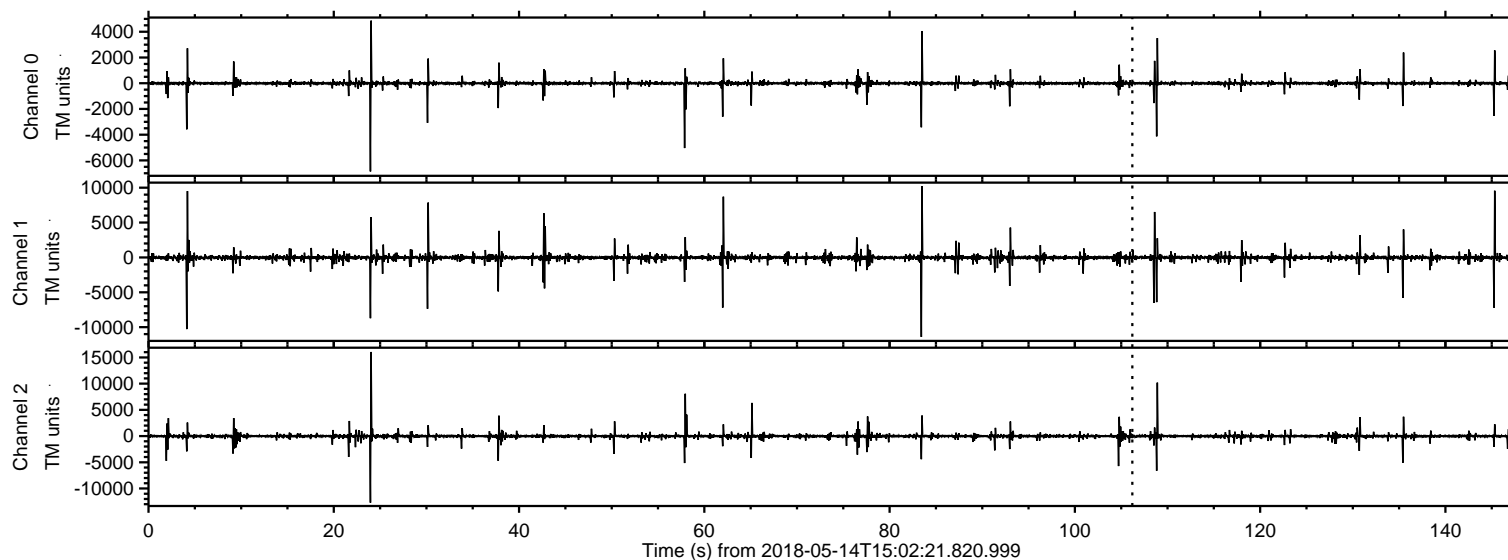


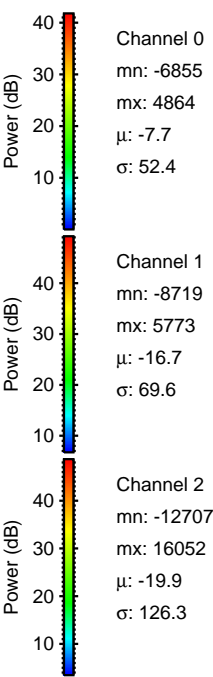
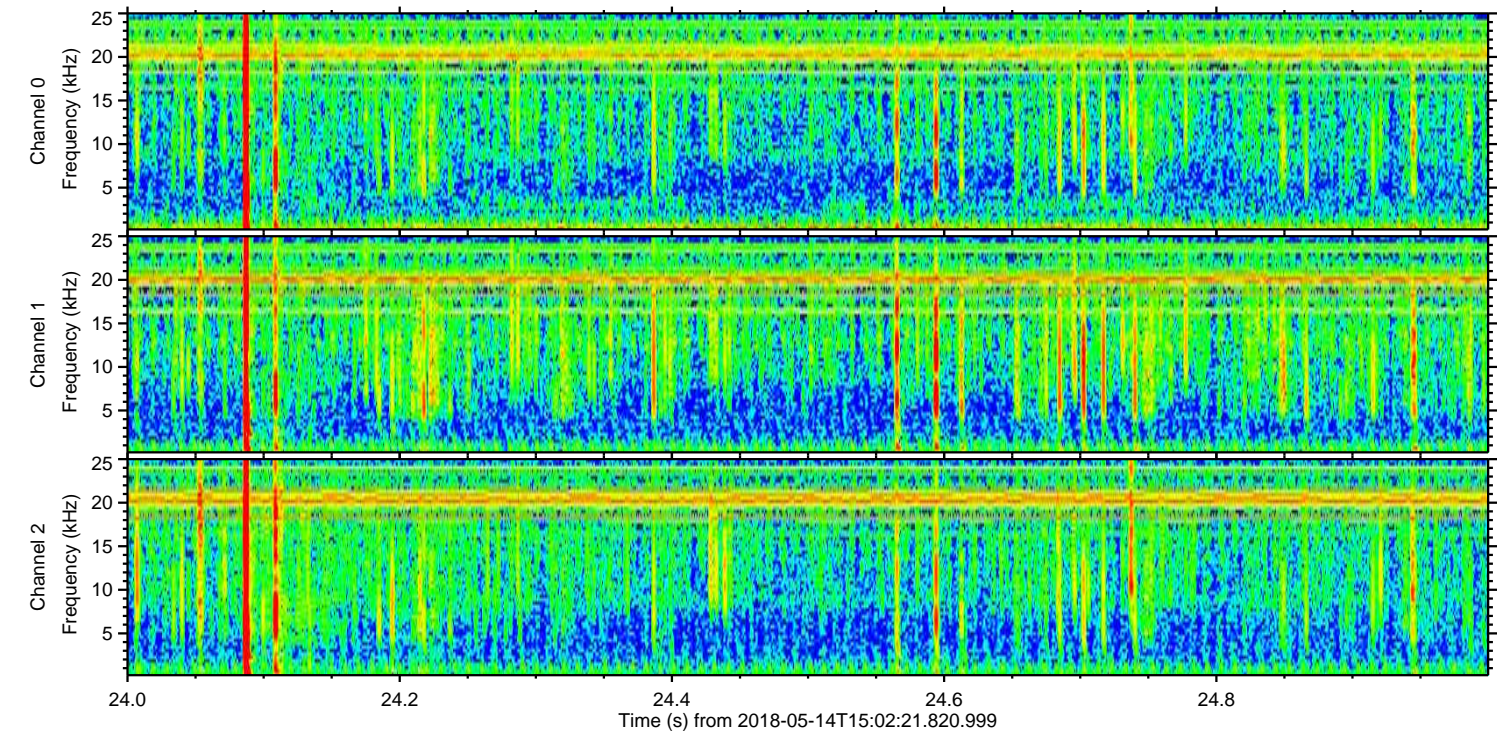
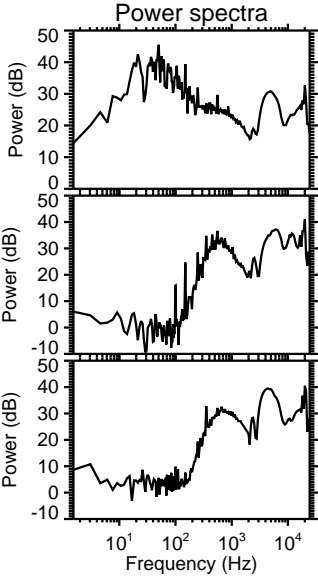
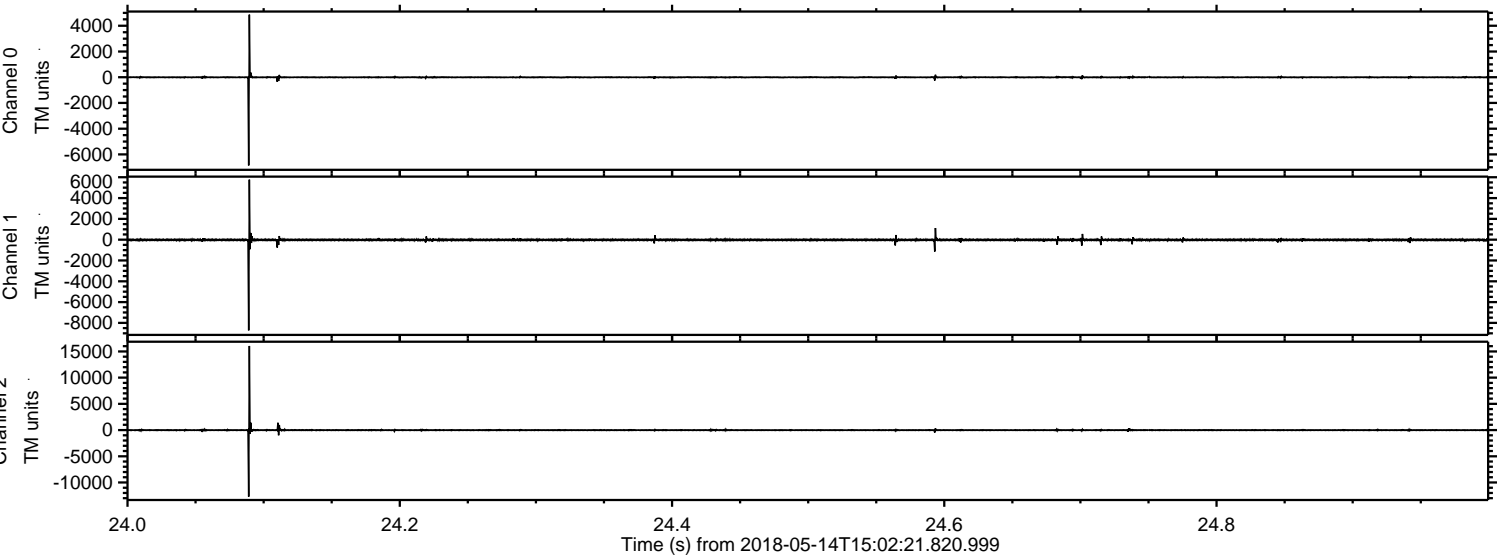
ELMAVAN 3D WAVEFORMS (Measured data sampled at 50 kHz) 50999 packets of 144 samples from 2018-05-14T15:02:21.820.999.

Processed Mon May 14 17:10:37 2018 by ELM ver.2012-10-06 from 001__elm20180514_150220__dat00.bin

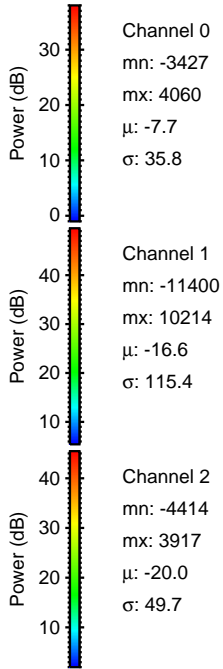
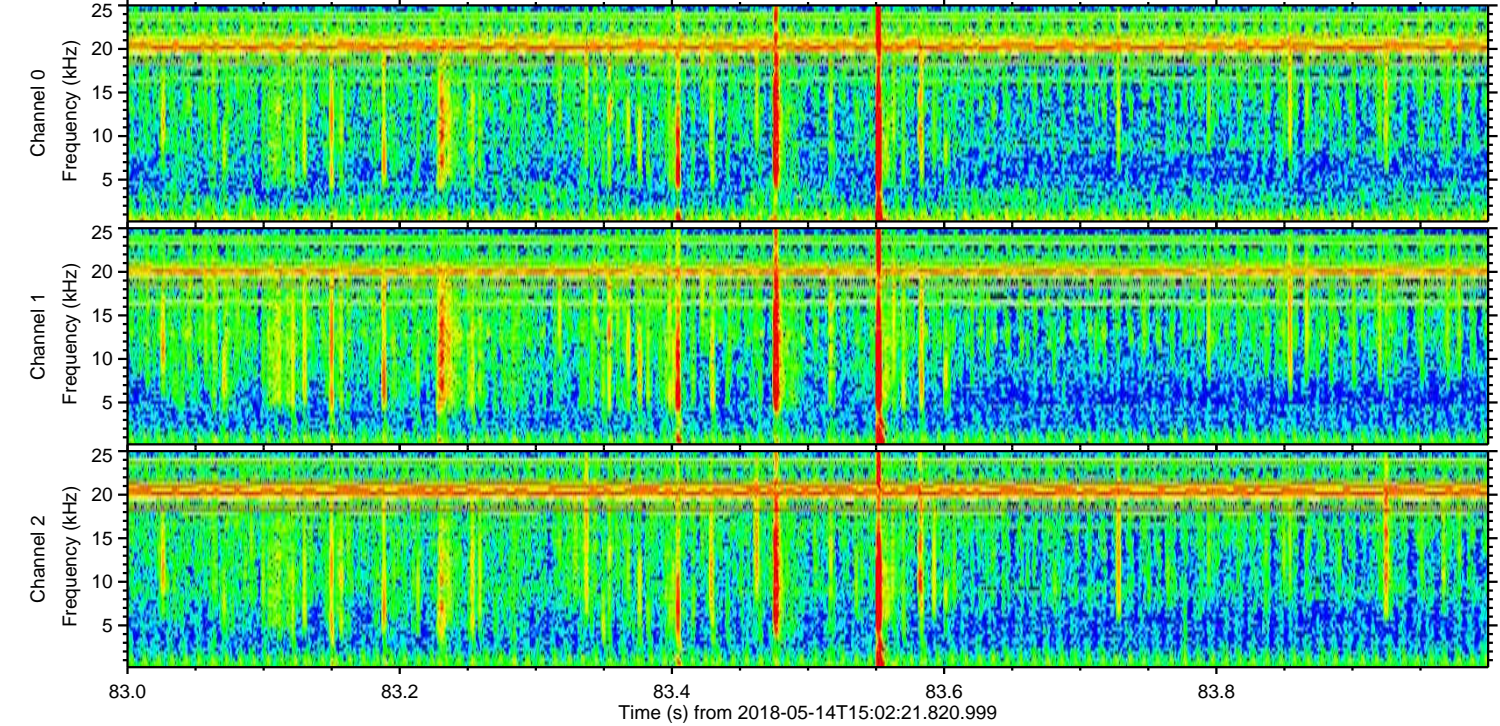
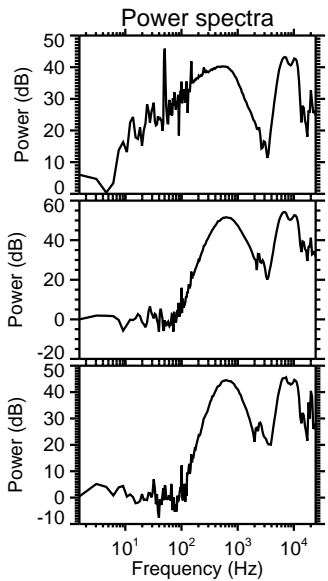
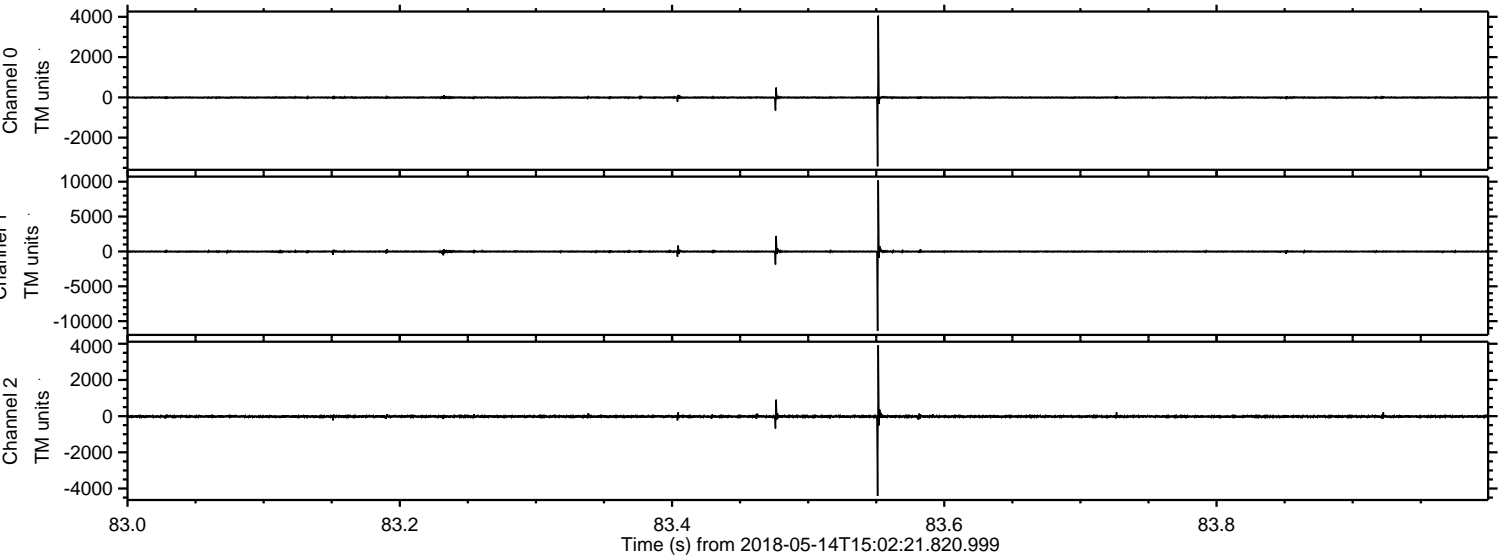


ELMAVAN 3D WAVEFORMS (Measured data sampled at 50 kHz) 50999 packets of 144 samples from 2018-05-14T15:02:21.820.999. Part 25/147

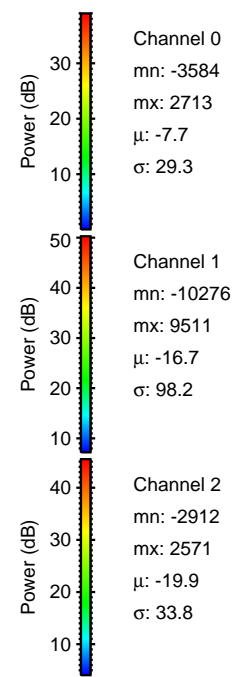
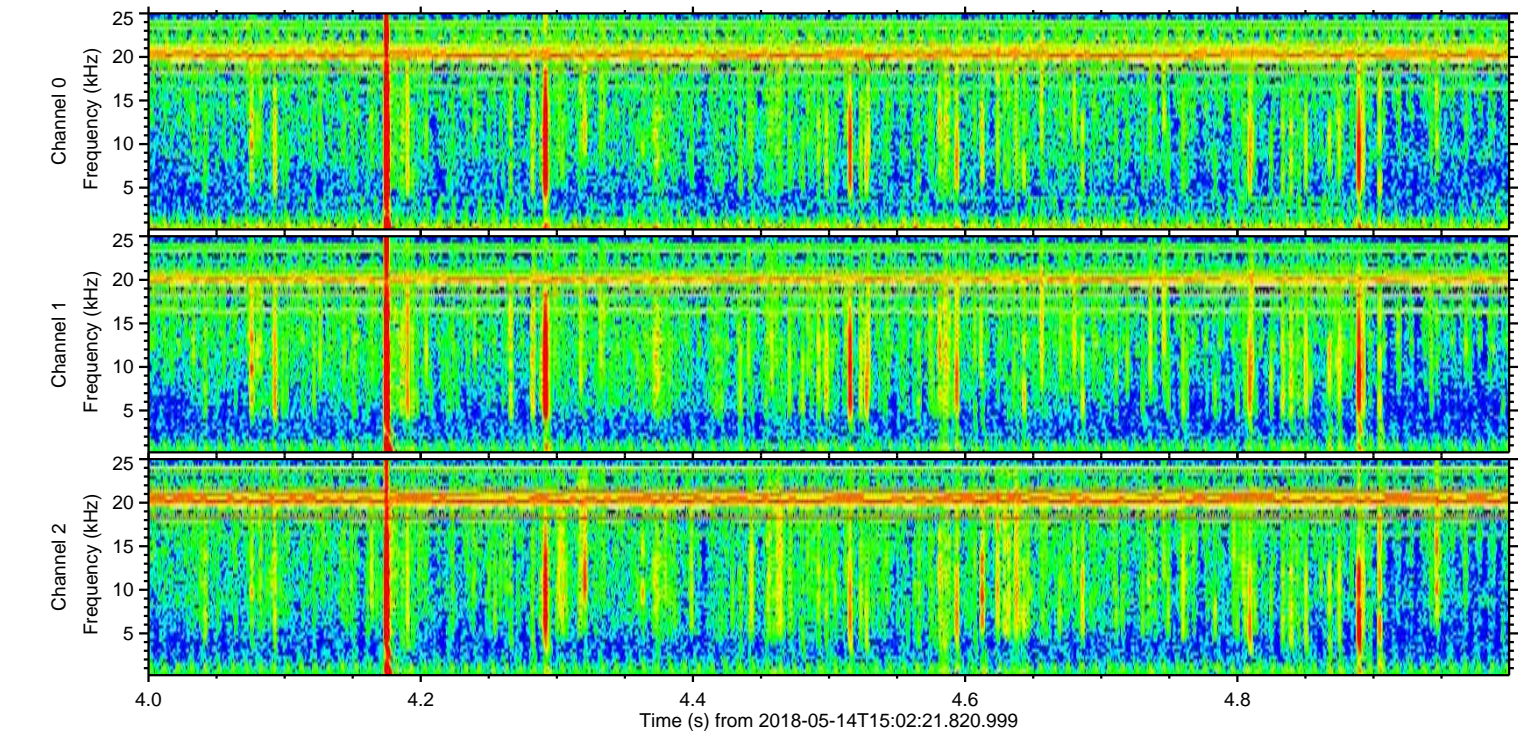
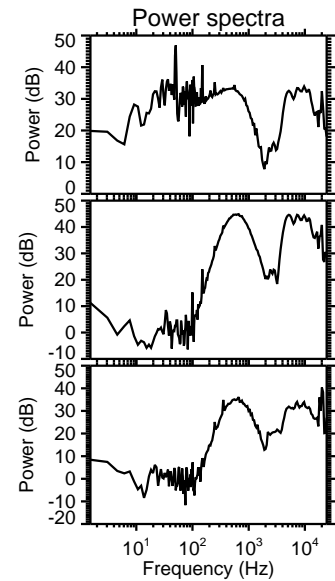
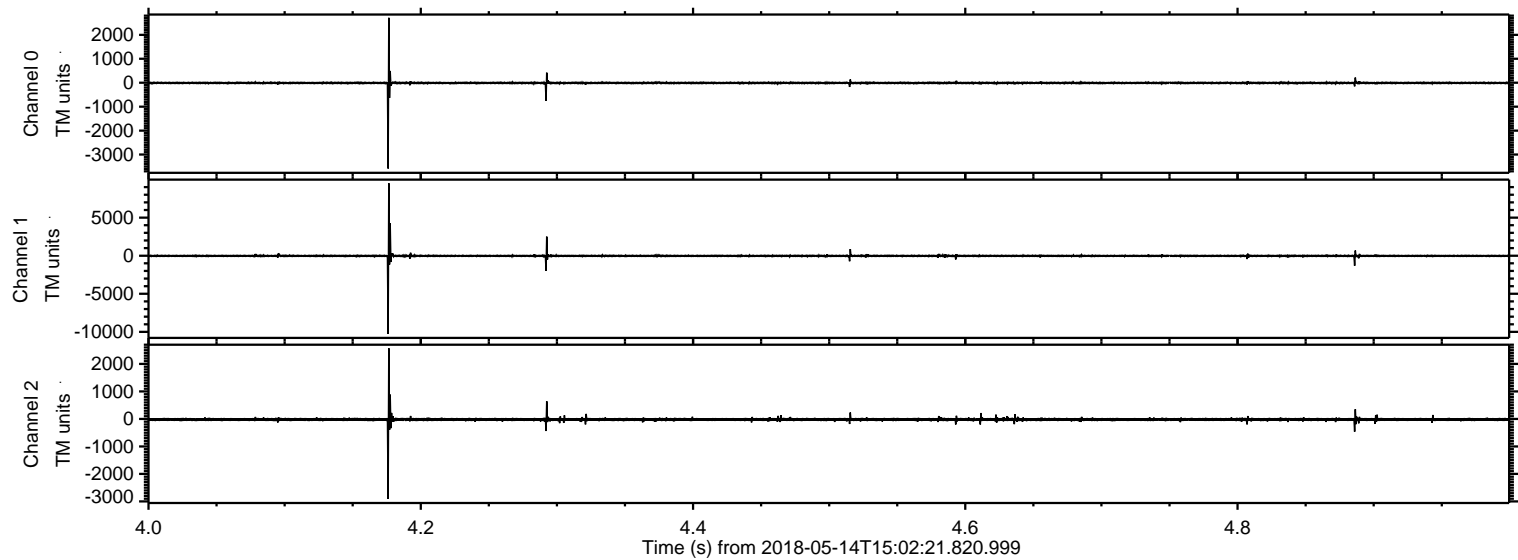
Processed Mon May 14 17:10:45 2018 by ELM ver.2012-10-06 from 001__elm20180514_150220__dat00.bin



Processed Mon May 14 17:10:46 2018 by ELM ver.2012-10-06 from 001__elm20180514_150220__dat00.bin

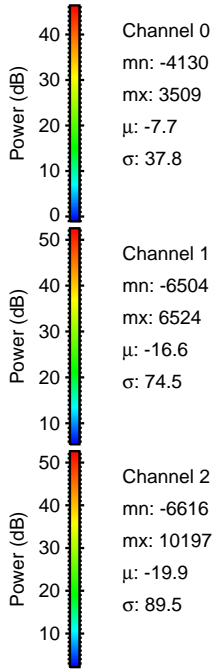
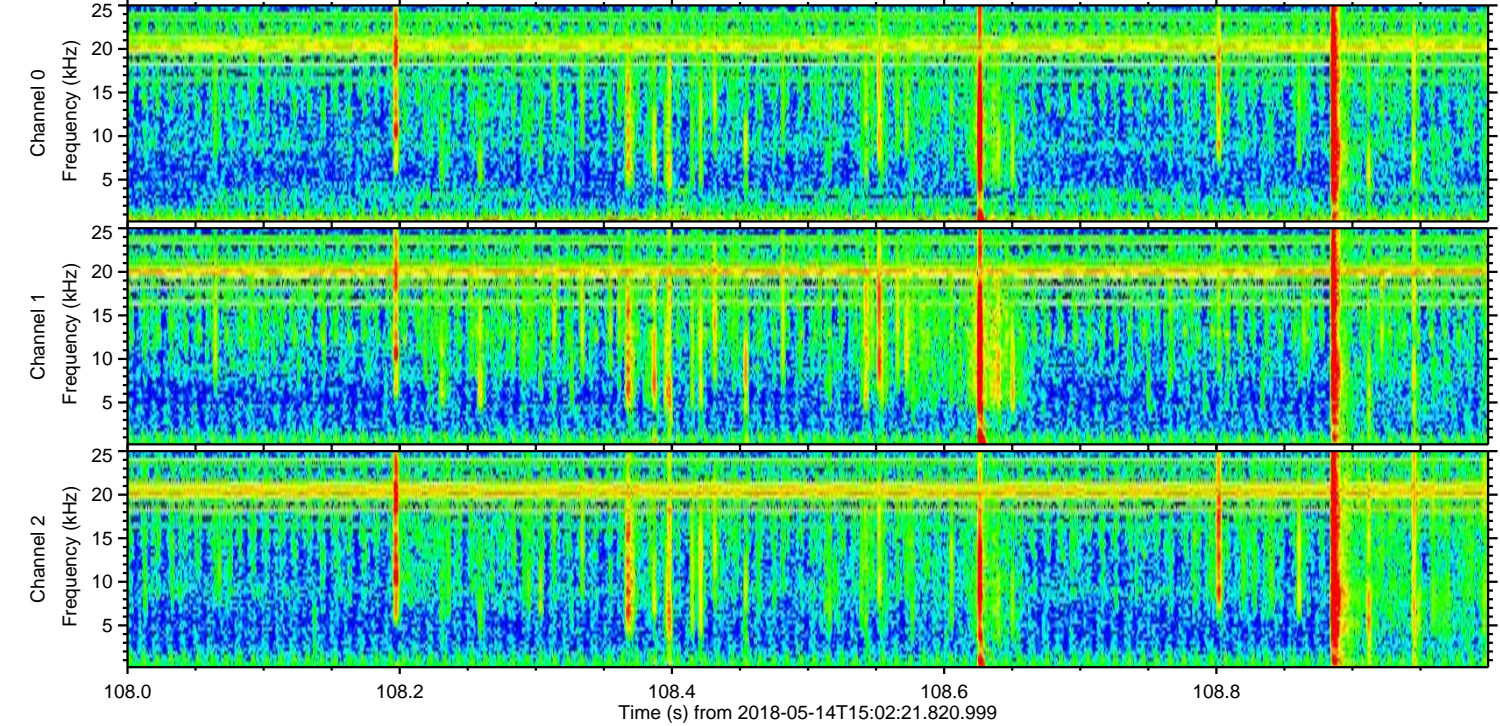
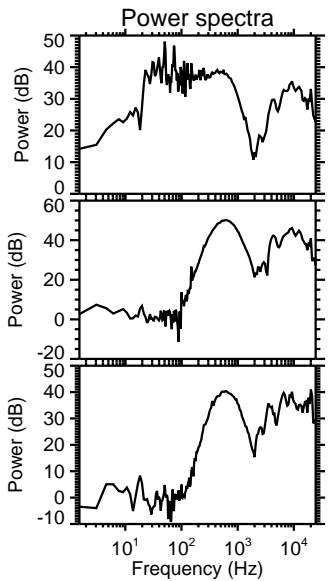
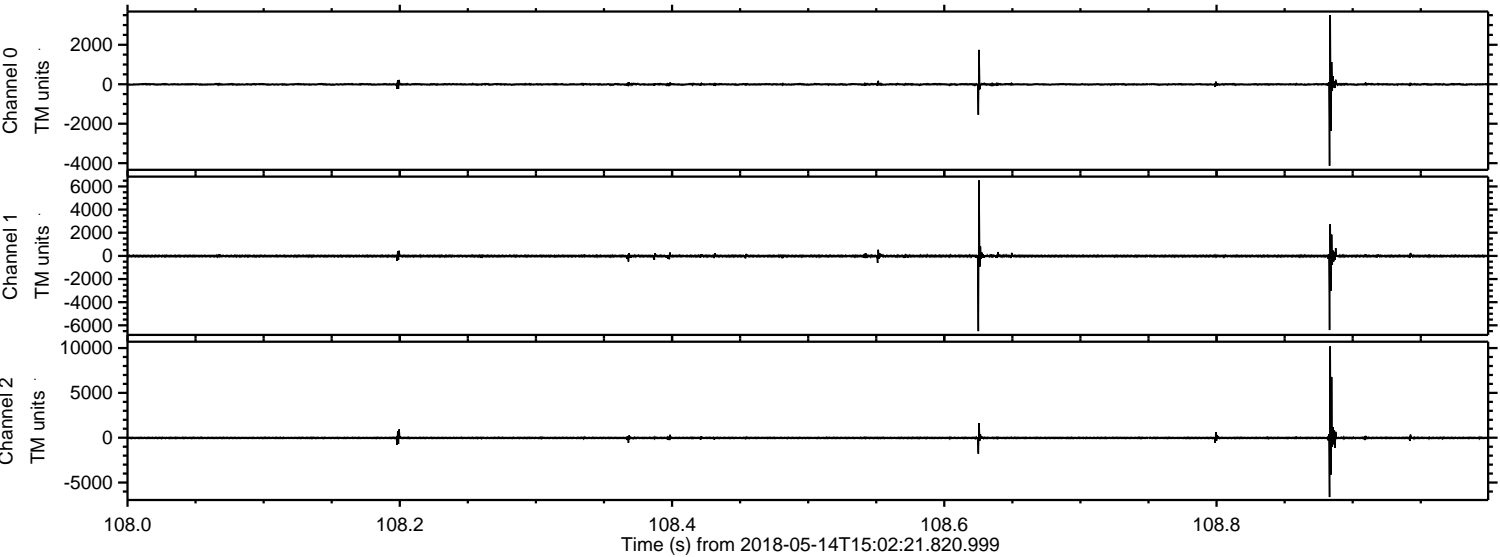


Processed Mon May 14 17:10:46 2018 by ELM ver.2012-10-06 from 001__elm20180514_150220__dat00.bin



ELMAVAN 3D WAVEFORMS (Measured data sampled at 50 kHz) 50999 packets of 144 samples from 2018-05-14T15:02:21.820.999. Part 109/147

Processed Mon May 14 17:10:47 2018 by ELM ver.2012-10-06 from 001__elm20180514_150220__dat00.bin



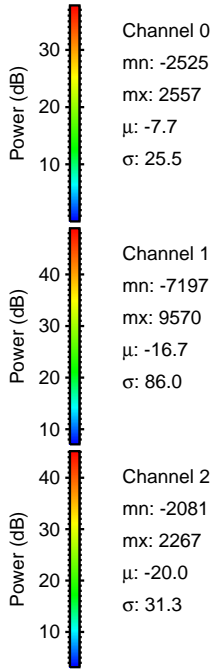
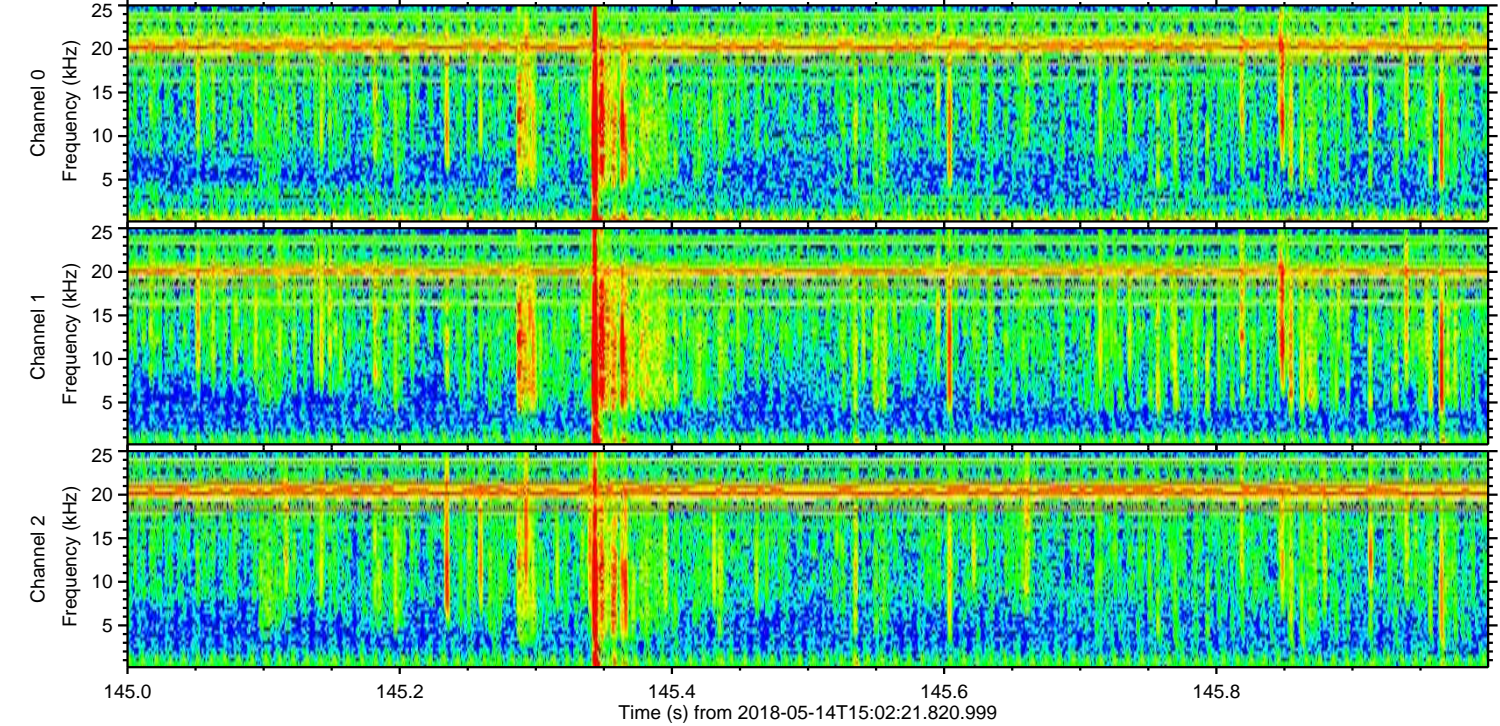
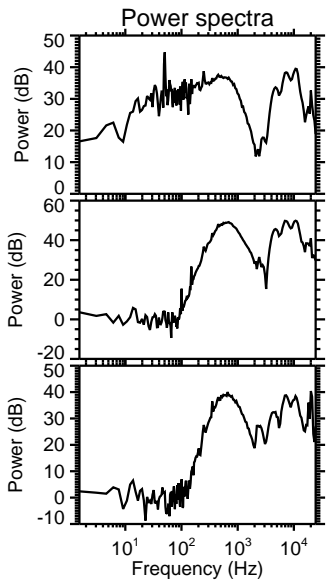
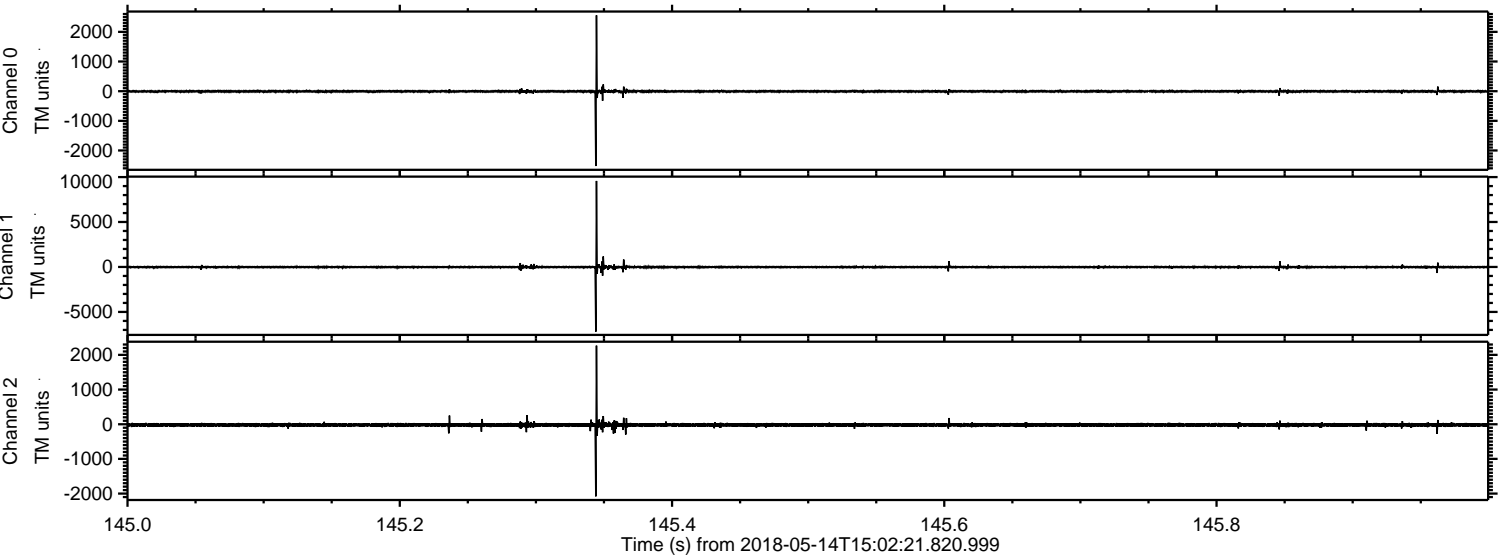
Channel 0
mn: -4130
mx: 3509
 μ : -7.7
 σ : 37.8

Channel 1
mn: -6504
mx: 6524
 μ : -16.6
 σ : 74.5

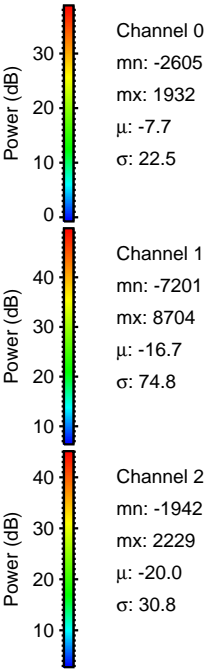
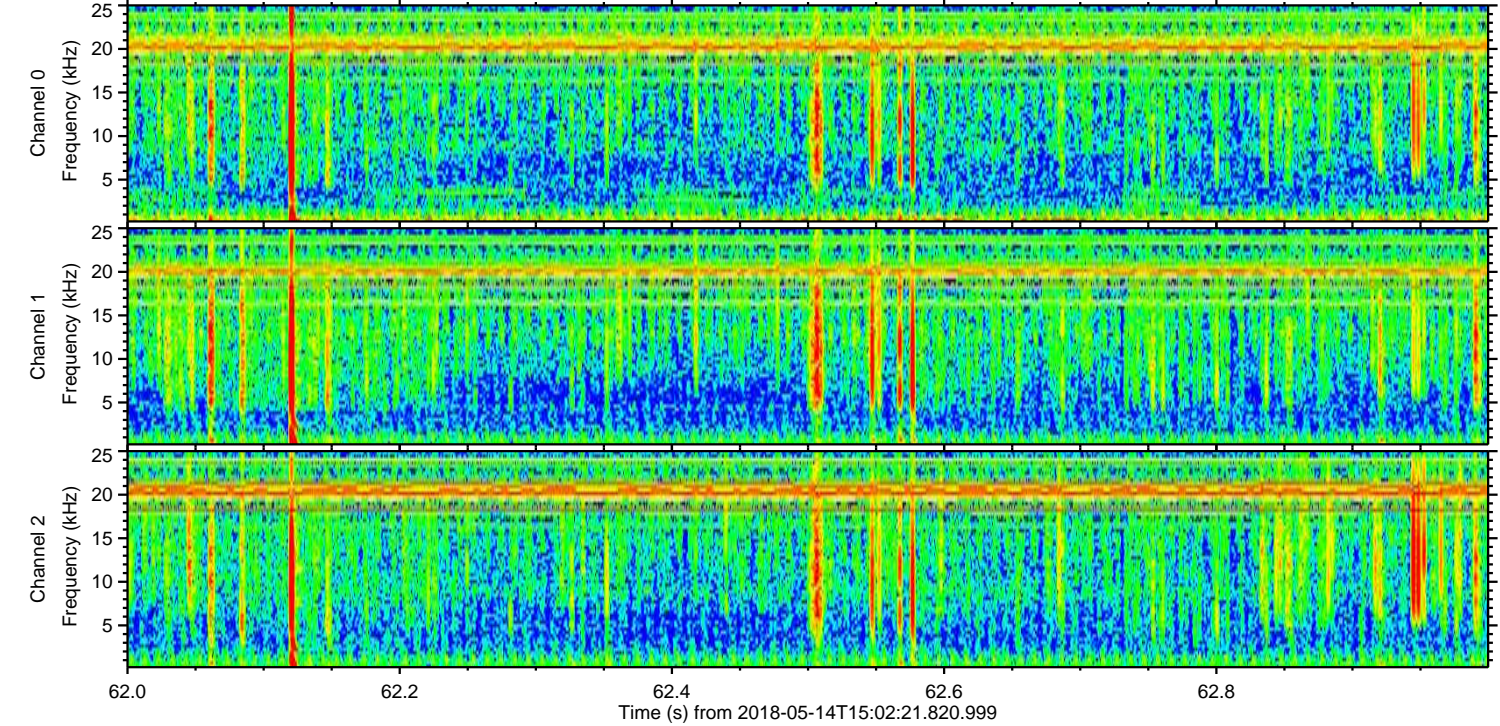
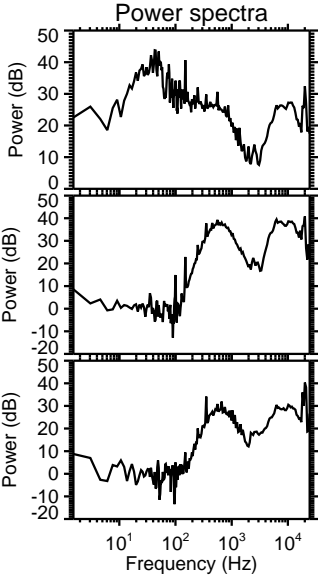
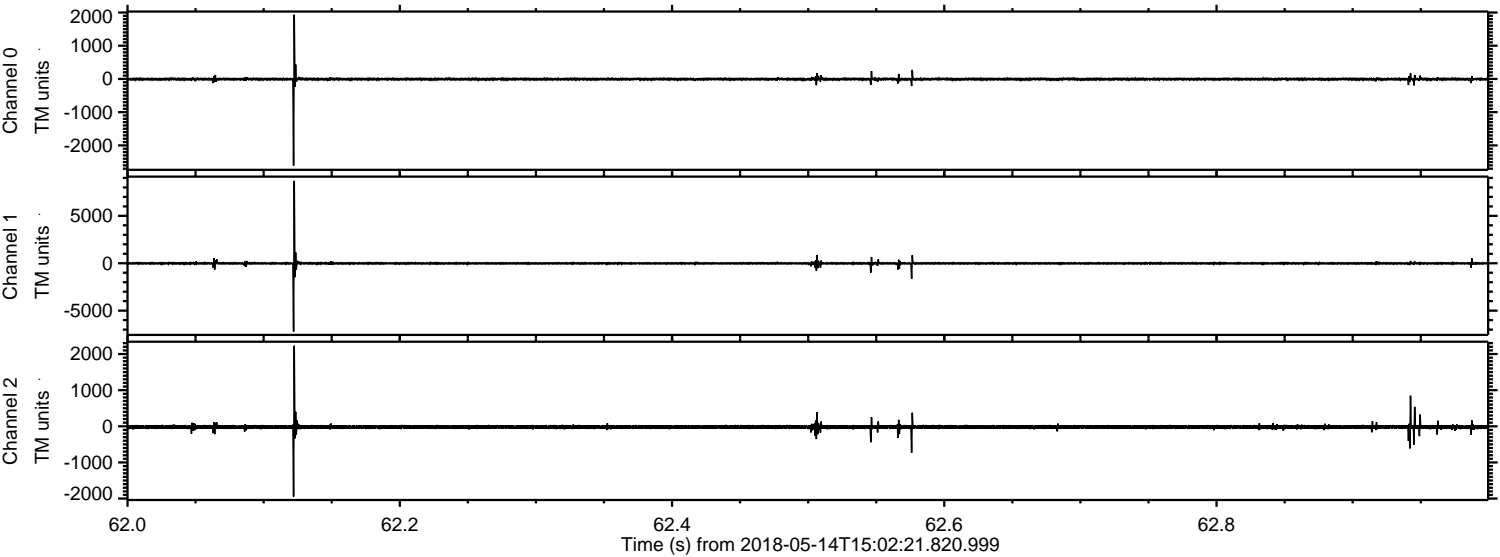
Channel 2
mn: -6616
mx: 10197
 μ : -19.9
 σ : 89.5

ELMAVAN 3D WAVEFORMS (Measured data sampled at 50 kHz) 50999 packets of 144 samples from 2018-05-14T15:02:21.820.999. Part 146/147

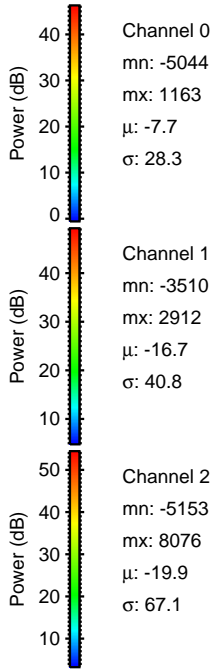
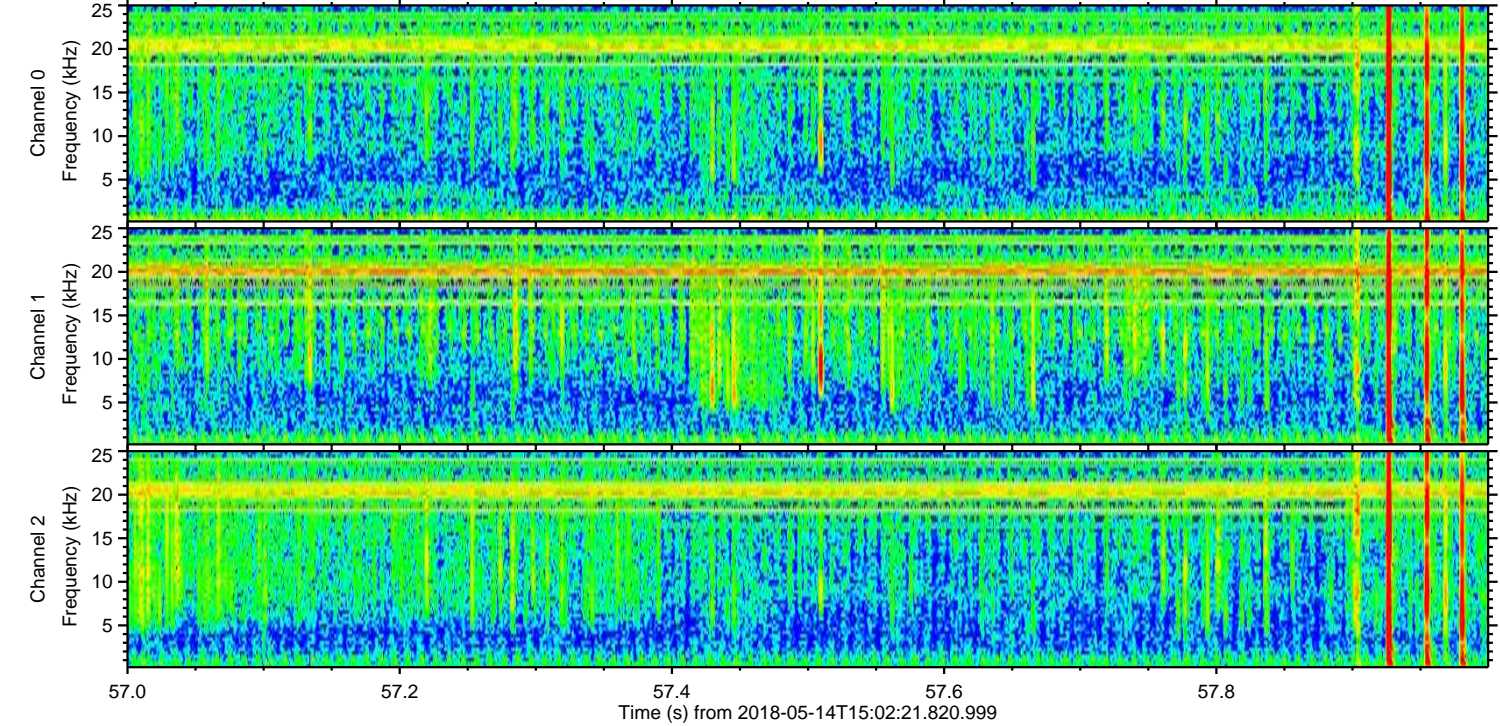
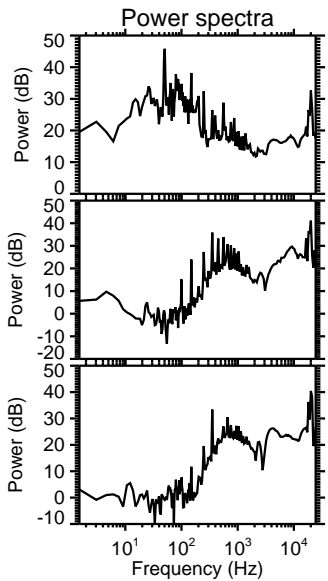
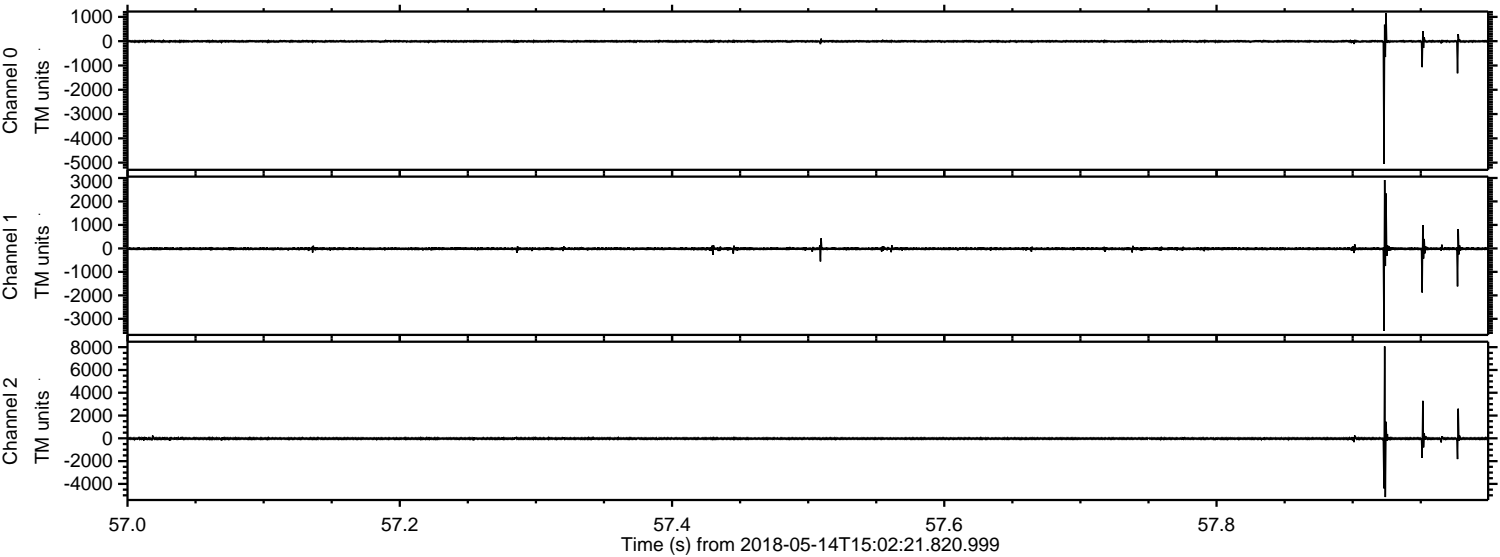
Processed Mon May 14 17:10:48 2018 by ELM ver.2012-10-06 from 001__elm20180514_150220__dat00.bin



Processed Mon May 14 17:10:48 2018 by ELM ver.2012-10-06 from 001__elm20180514_150220__dat00.bin



Processed Mon May 14 17:10:49 2018 by ELM ver.2012-10-06 from 001__elm20180514_150220__dat00.bin

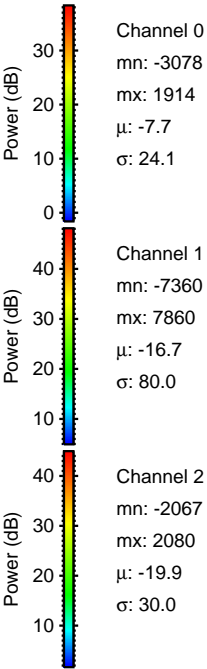
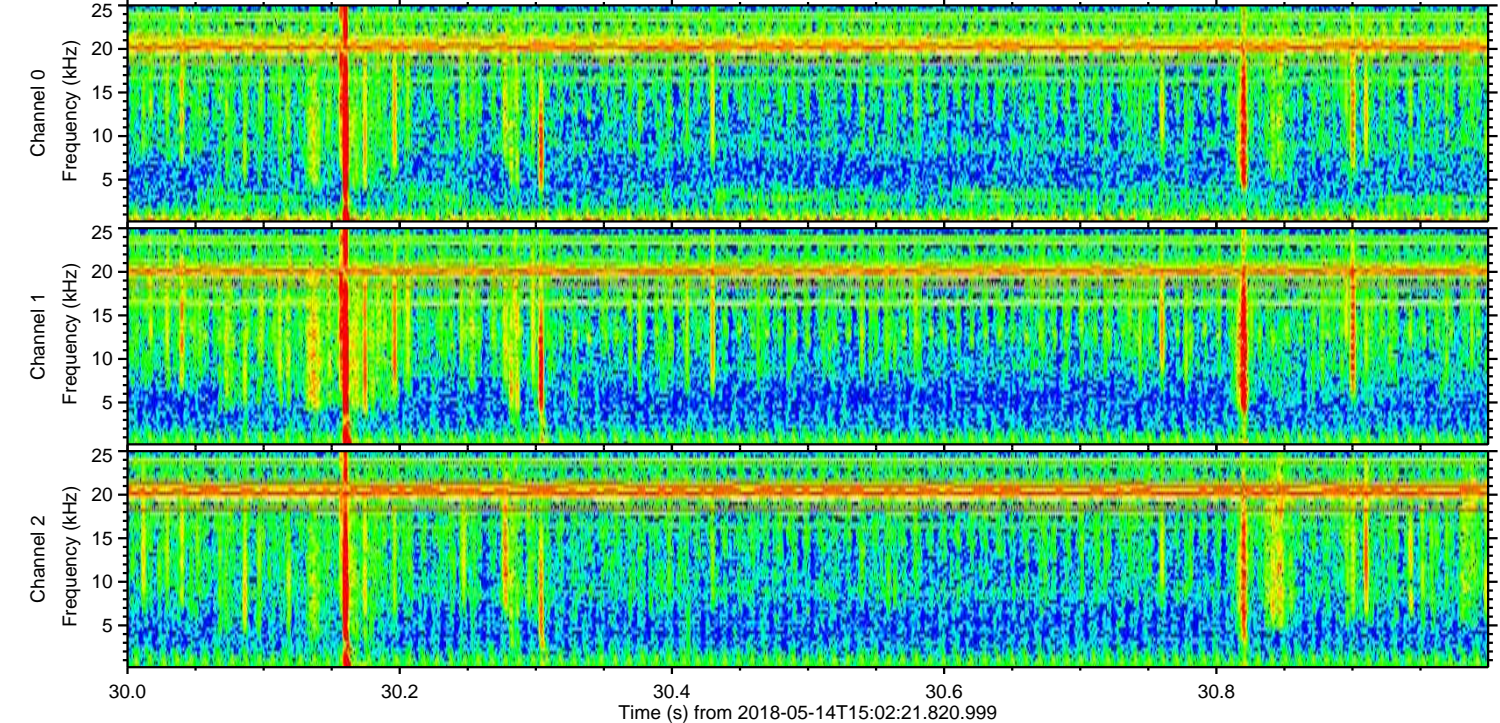
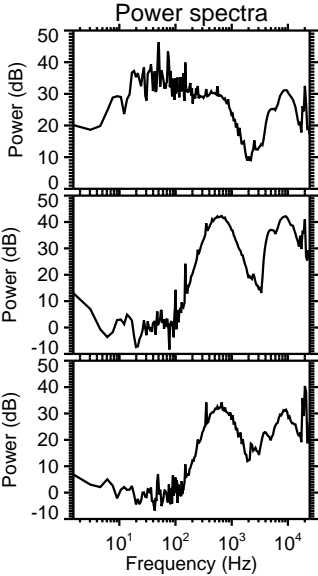
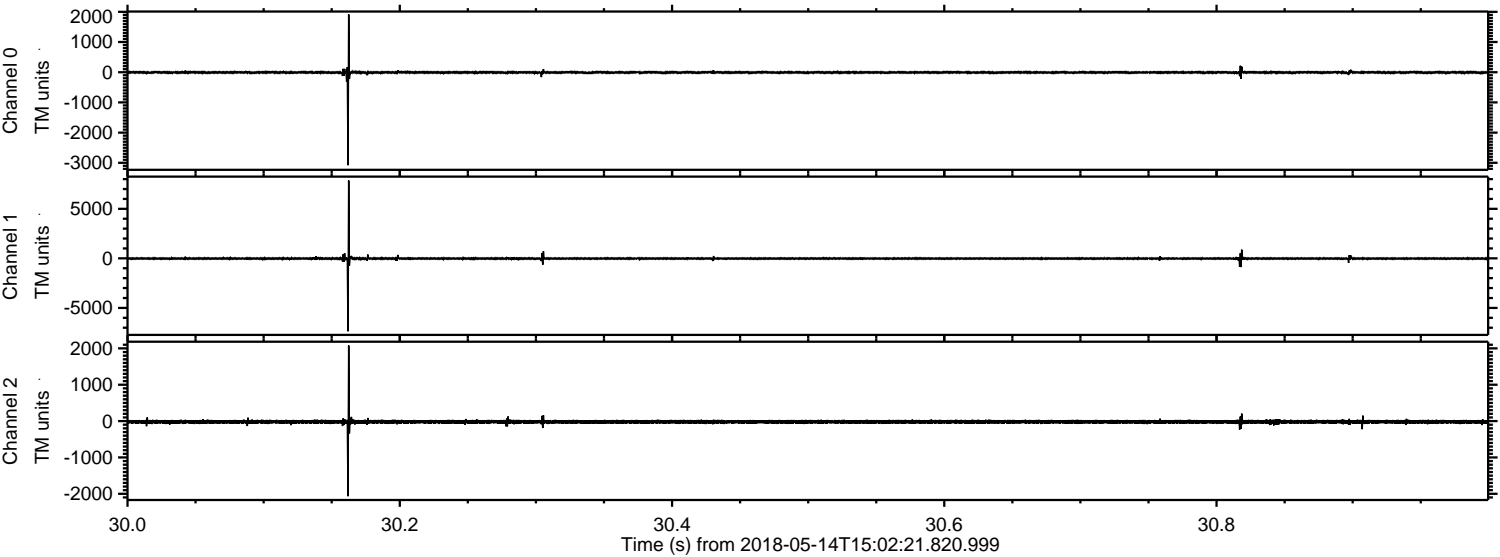


Channel 0
mn: -5044
mx: 1163
 μ : -7.7
 σ : 28.3

Channel 1
mn: -3510
mx: 2912
 μ : -16.7
 σ : 40.8

Channel 2
mn: -5153
mx: 8076
 μ : -19.9
 σ : 67.1

Processed Mon May 14 17:10:50 2018 by ELM ver.2012-10-06 from 001__elm20180514_150220__dat00.bin



Channel 0
mn: -3078
mx: 1914
 μ : -7.7
 σ : 24.1

Channel 1
mn: -7360
mx: 7860
 μ : -16.7
 σ : 80.0

Channel 2
mn: -2067
mx: 2080
 μ : -19.9
 σ : 30.0

Processed Mon May 14 17:10:50 2018 by ELM ver.2012-10-06 from 001__elm20180514_150220__dat00.bin

