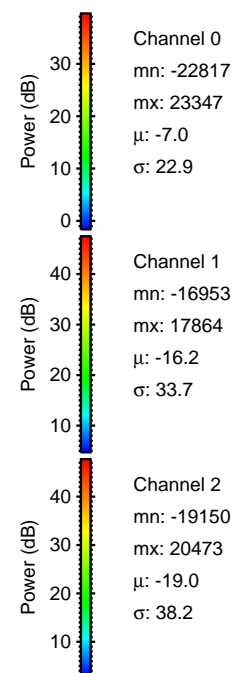
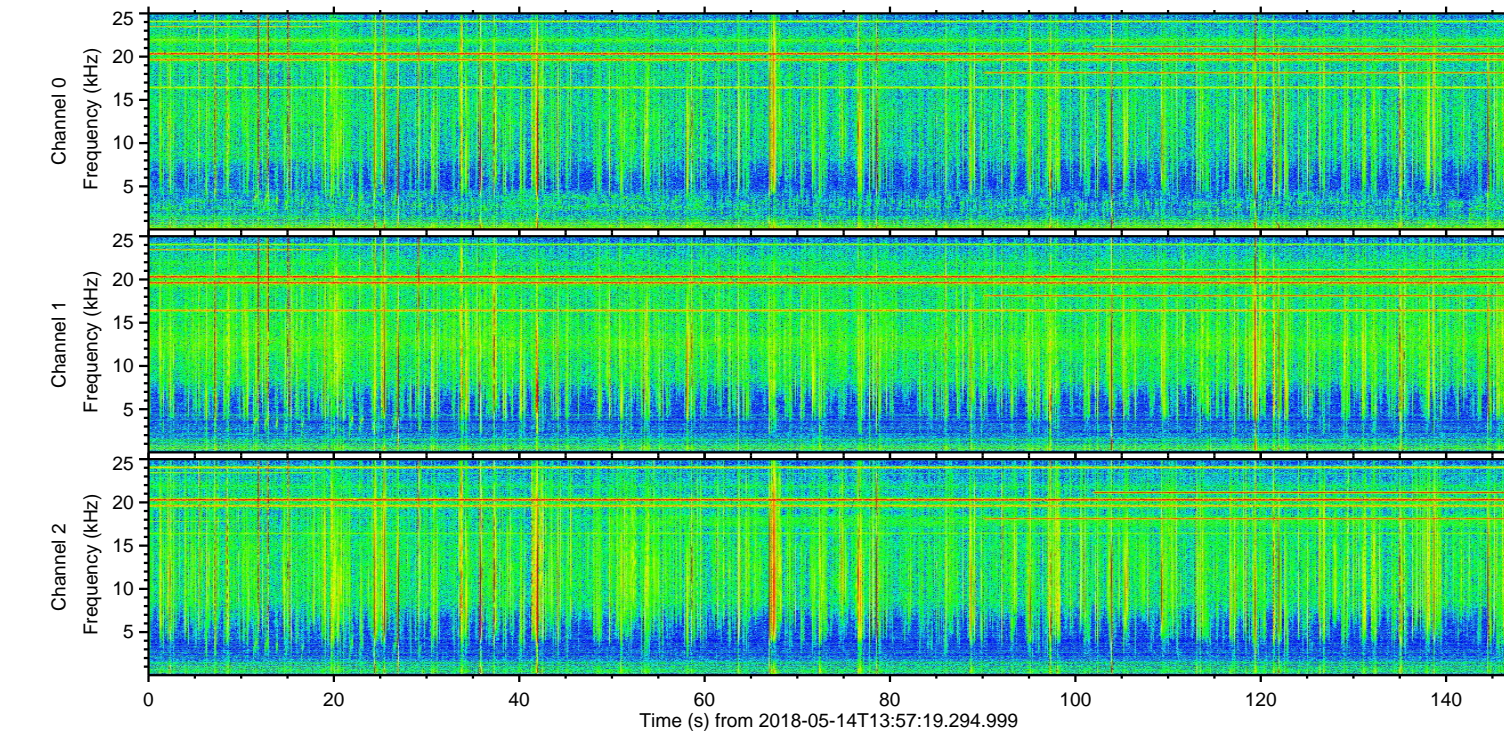
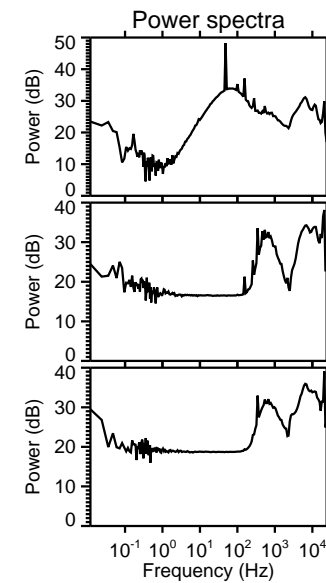
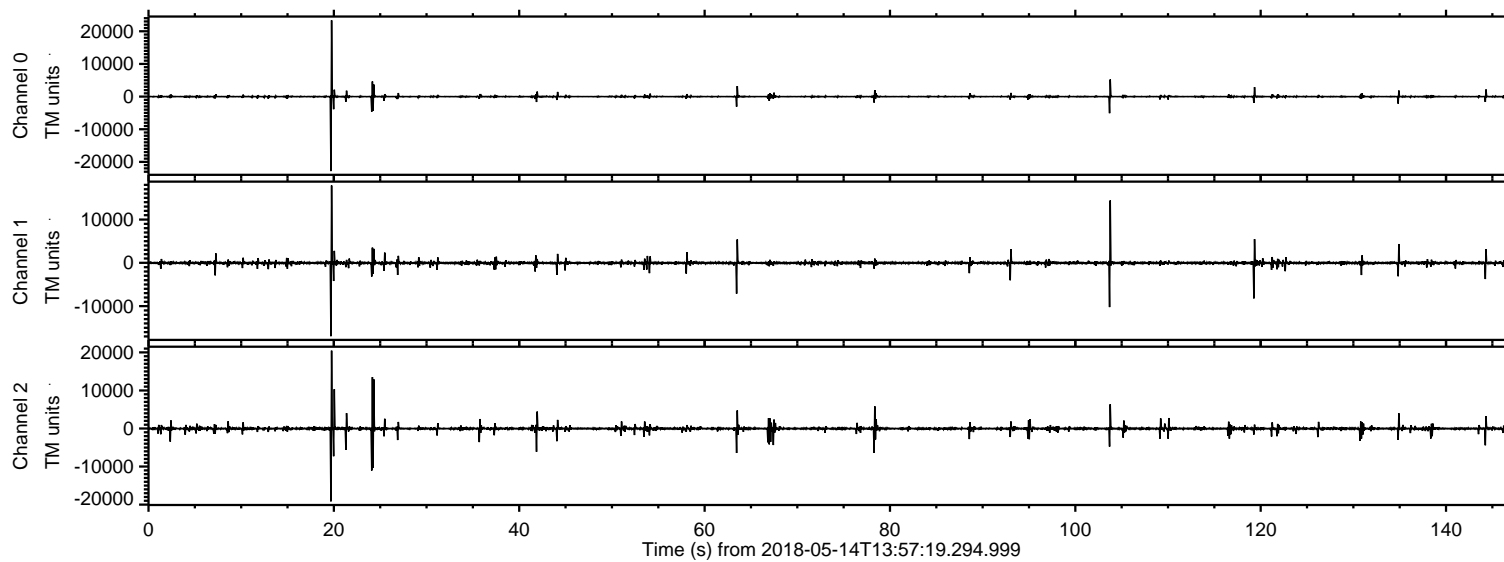


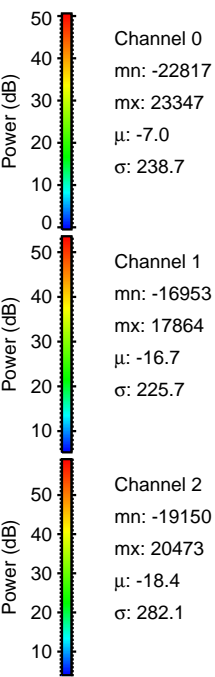
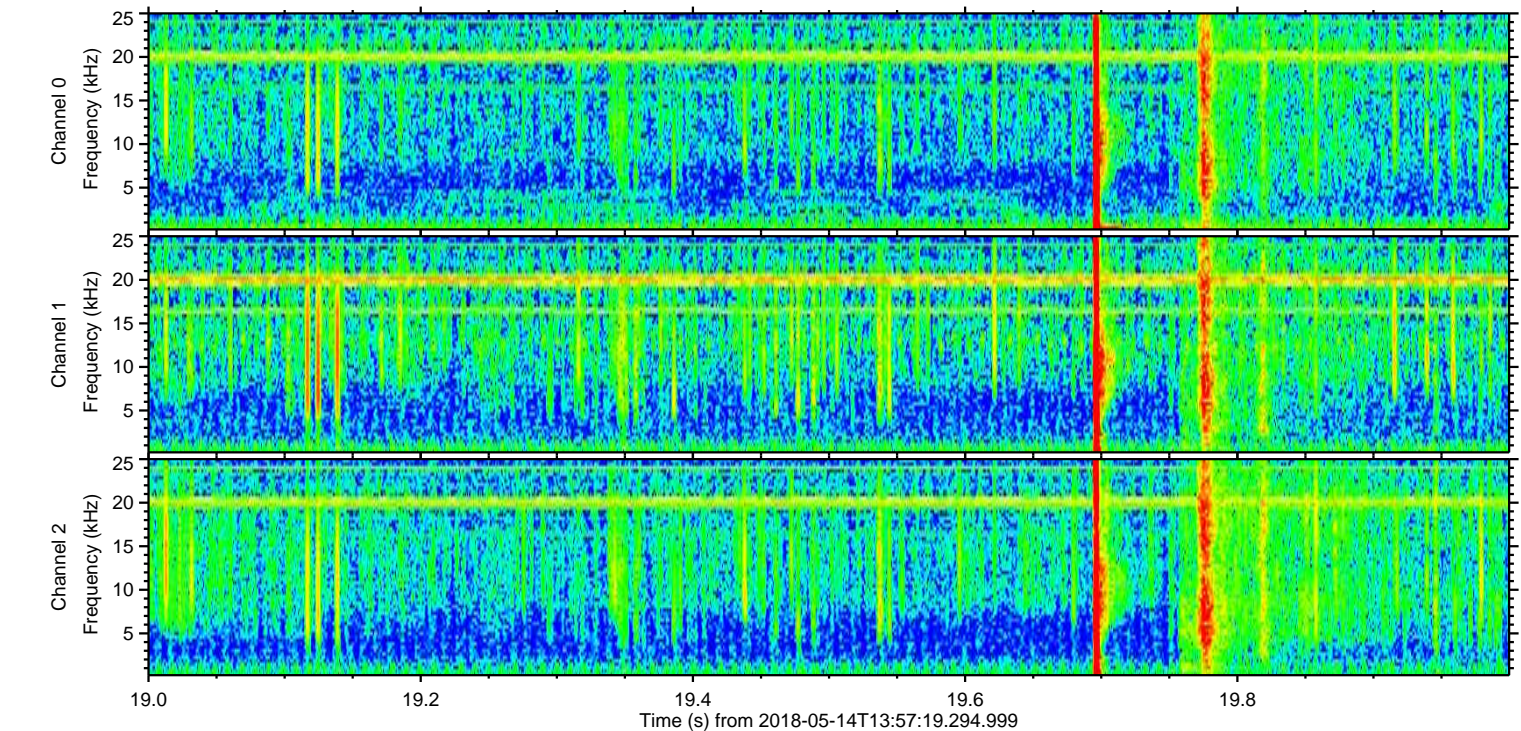
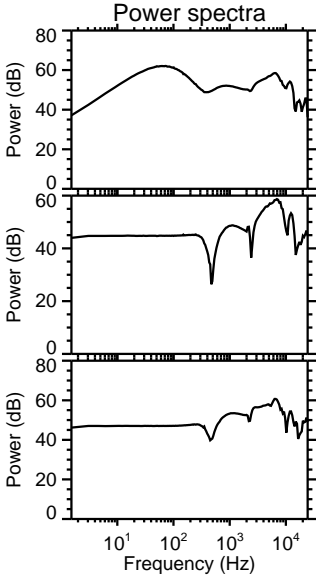
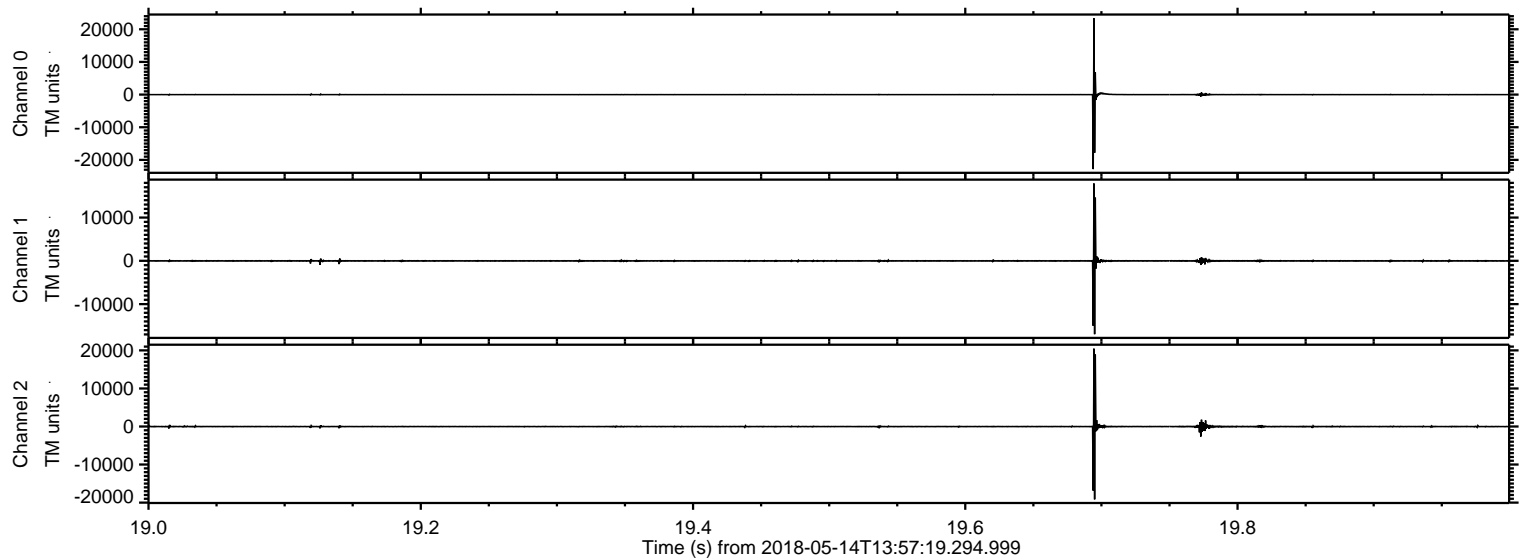
ELMAVAN 3D WAVEFORMS (Measured data sampled at 50 kHz) 51000 packets of 144 samples from 2018-05-14T13:57:19.294.999.

Processed Mon May 14 16:05:27 2018 by ELM ver.2012-10-06 from 001__elm20180514_135718__dat00.bin



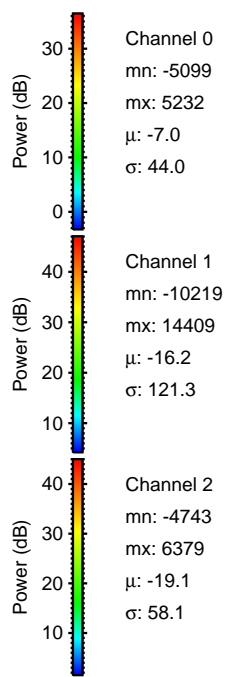
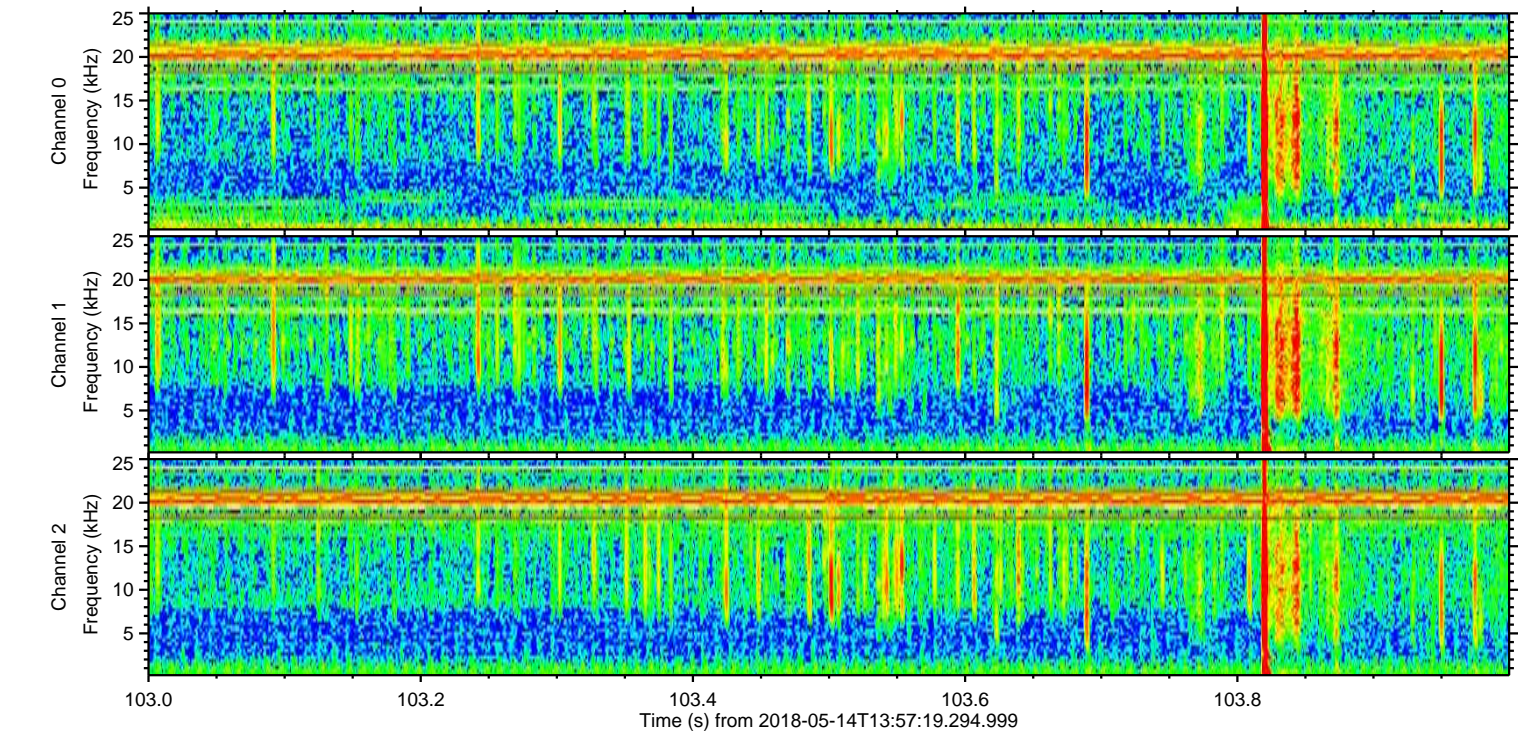
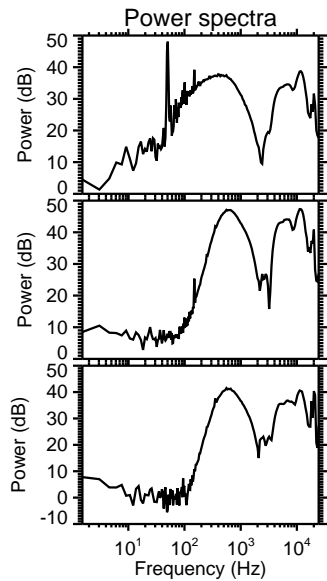
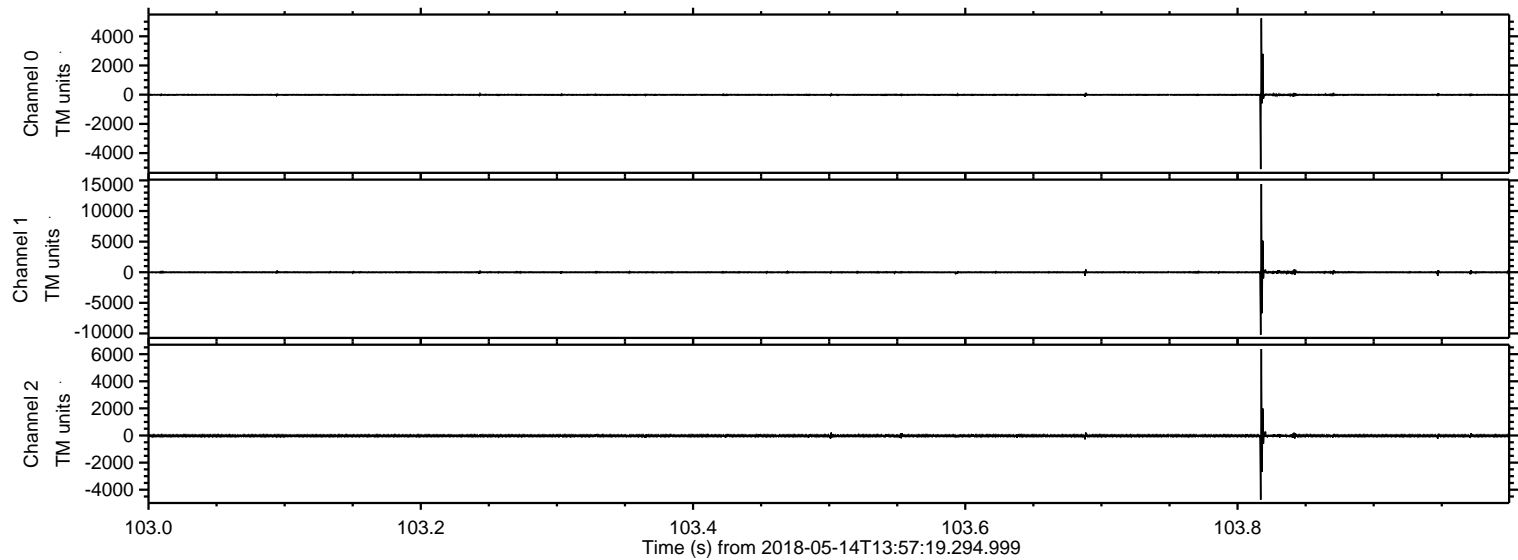
ELMAVAN 3D WAVEFORMS (Measured data sampled at 50 kHz) 51000 packets of 144 samples from 2018-05-14T13:57:19.294.999. Part 20/147

Processed Mon May 14 16:05:34 2018 by ELM ver.2012-10-06 from 001__elm20180514_135718__dat00.bin

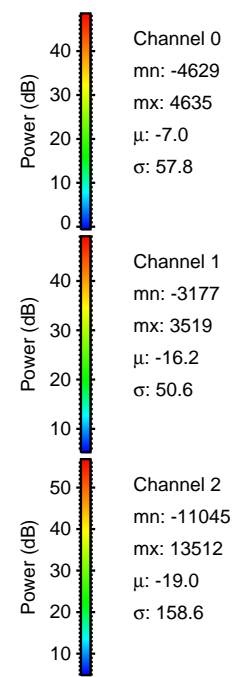
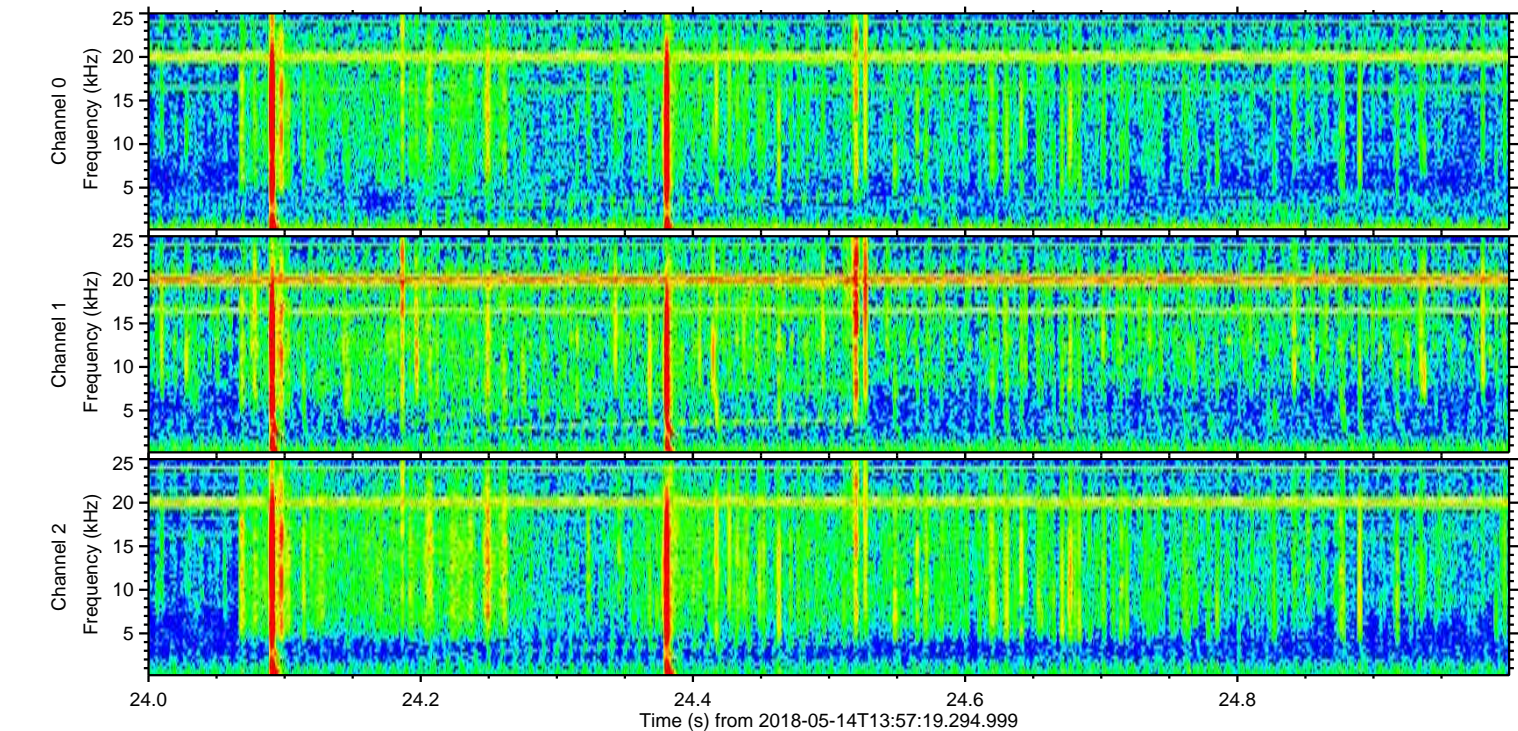
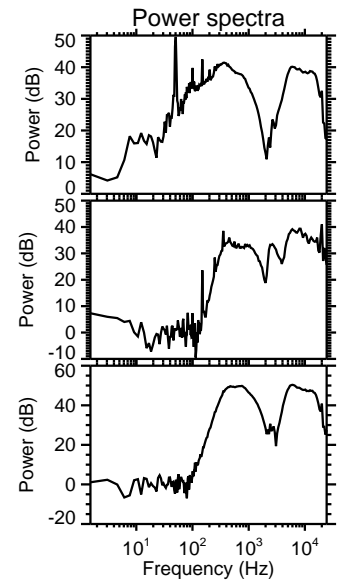
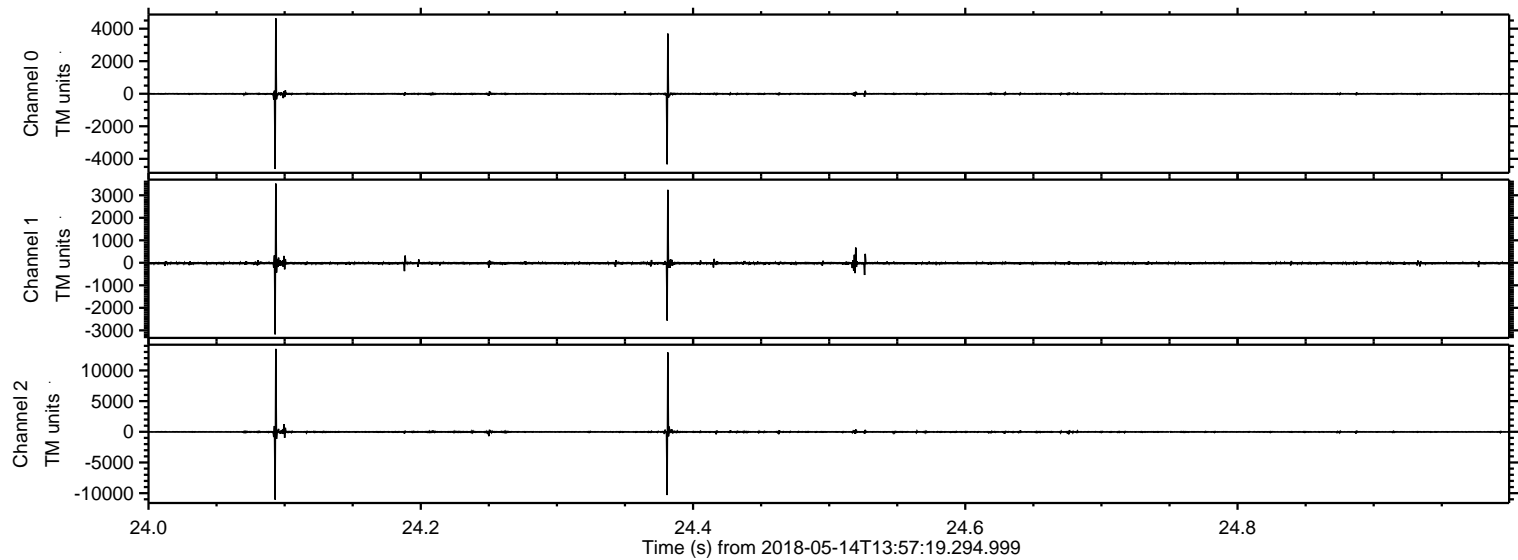


ELMAVAN 3D WAVEFORMS (Measured data sampled at 50 kHz) 51000 packets of 144 samples from 2018-05-14T13:57:19.294.999. Part 104/147

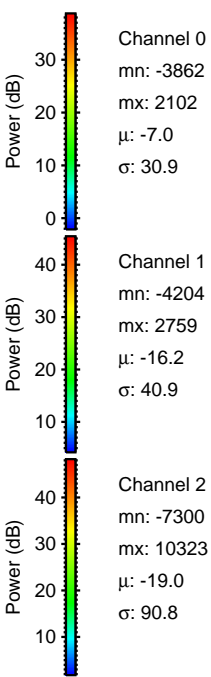
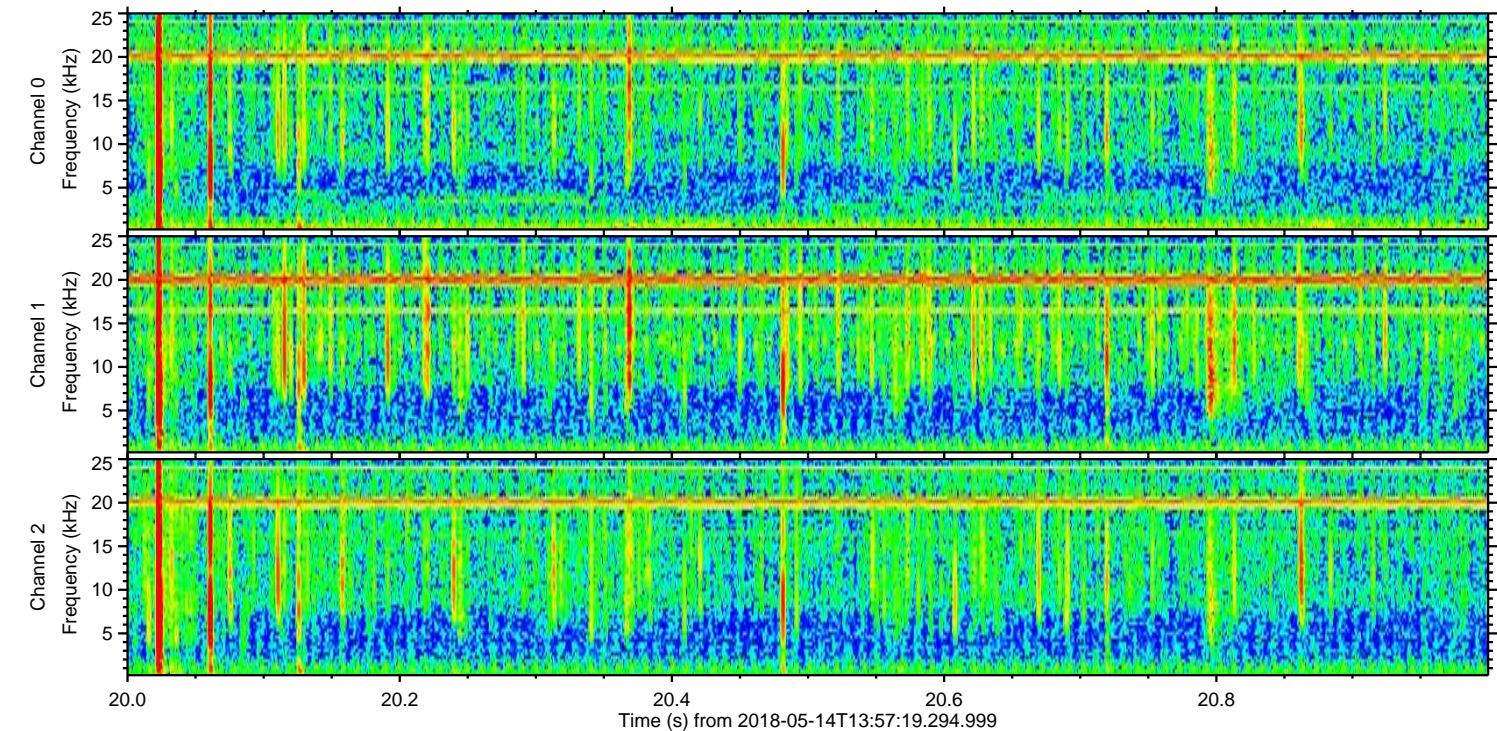
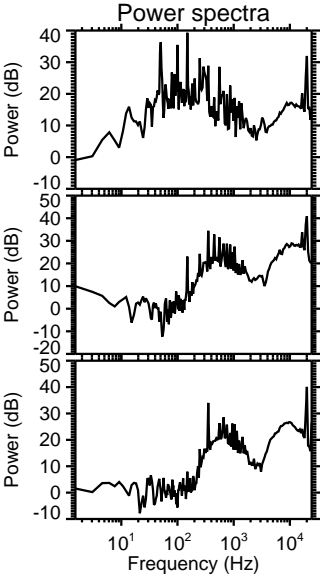
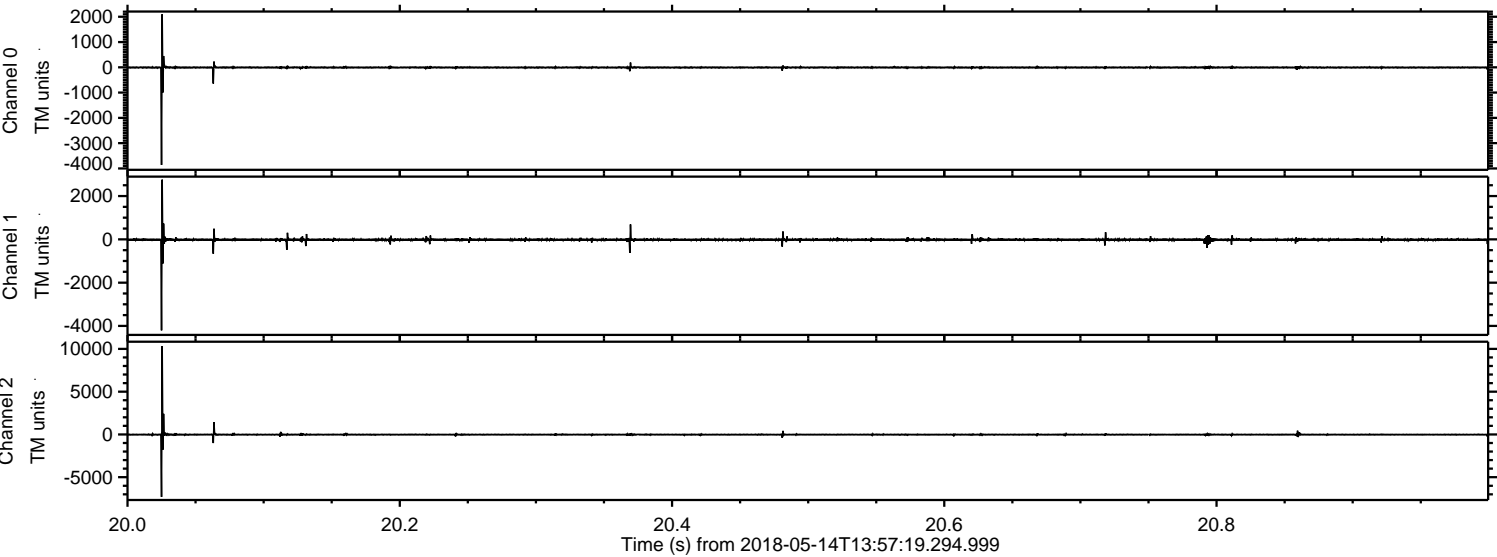
Processed Mon May 14 16:05:35 2018 by ELM ver.2012-10-06 from 001__elm20180514_135718__dat00.bin



Processed Mon May 14 16:05:35 2018 by ELM ver.2012-10-06 from 001__elm20180514_135718__dat00.bin

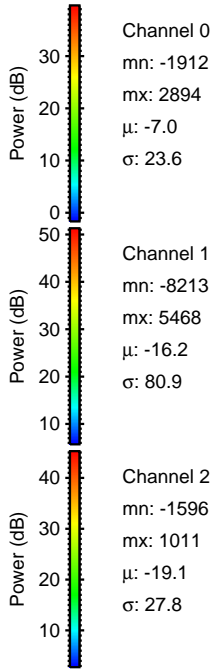
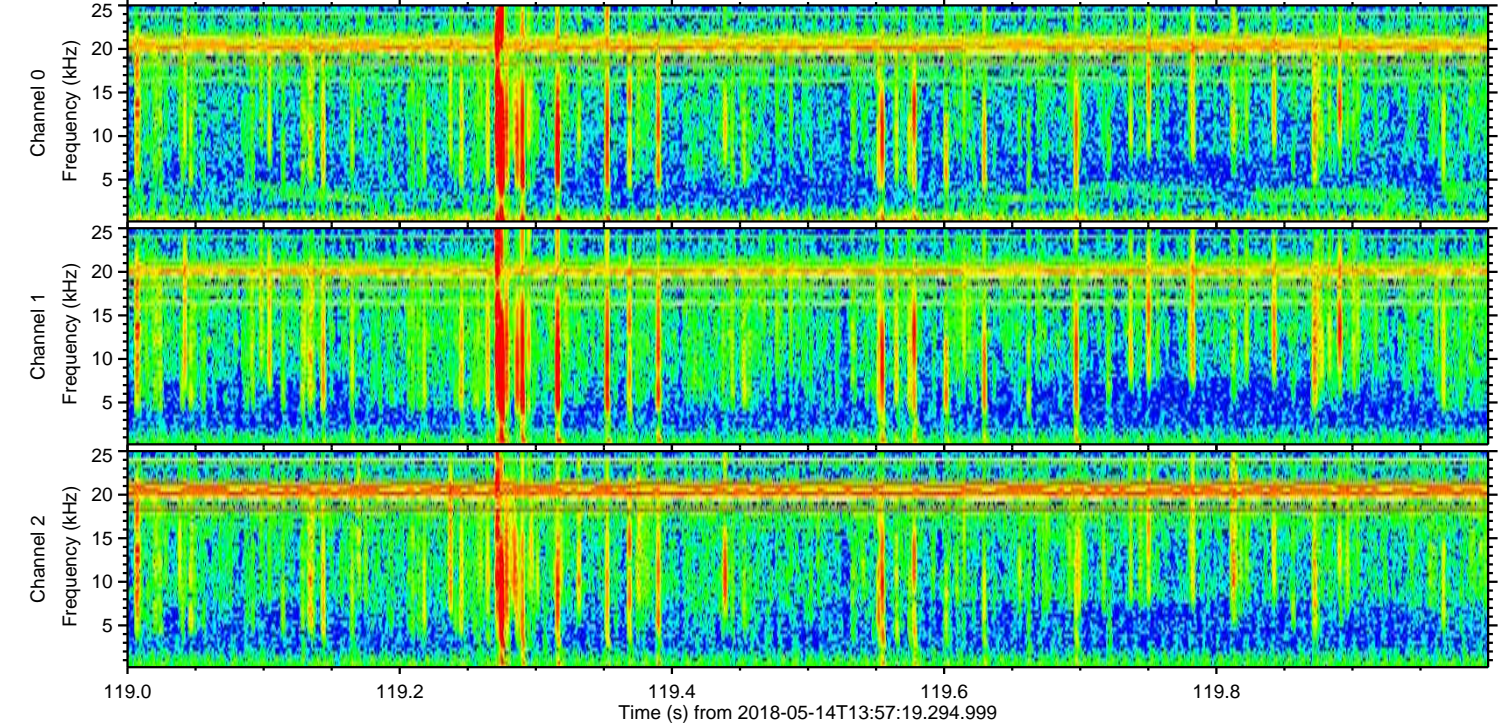
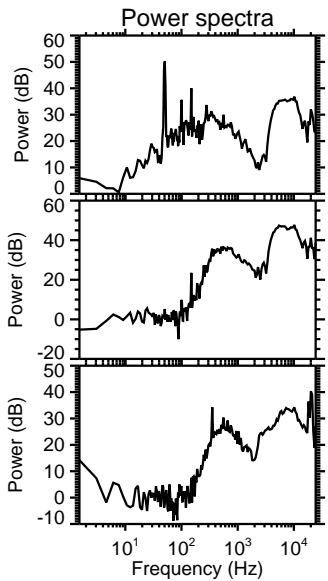
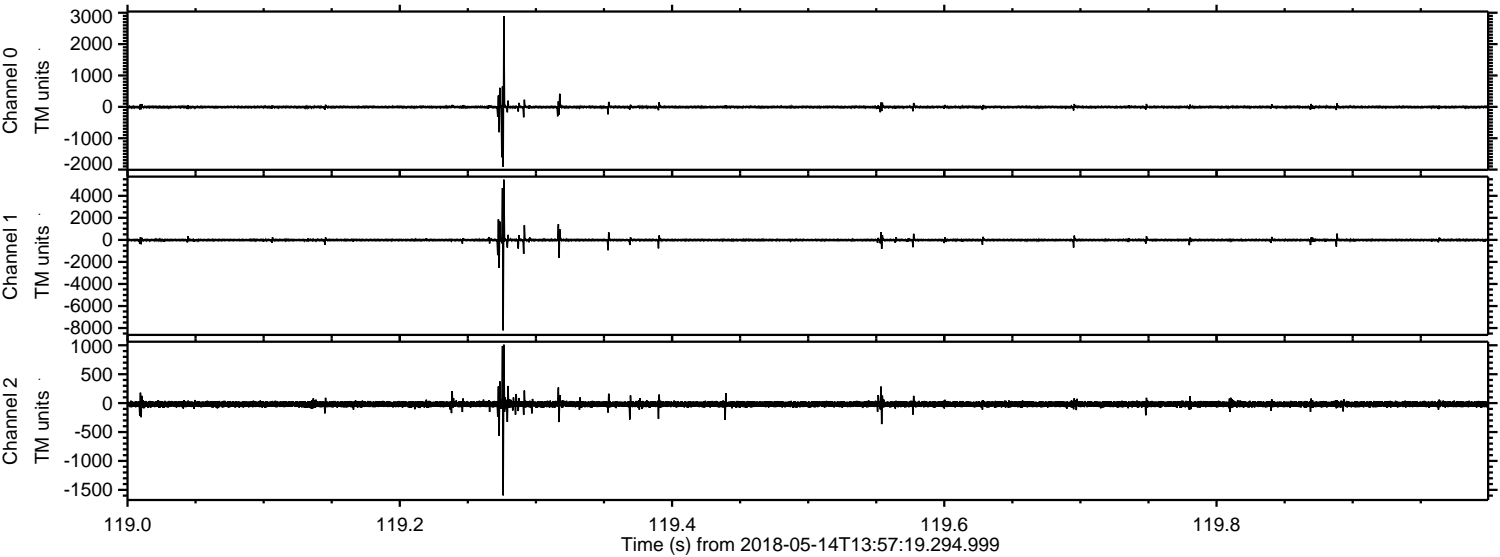


Processed Mon May 14 16:05:36 2018 by ELM ver.2012-10-06 from 001__elm20180514_135718__dat00.bin



ELMAVAN 3D WAVEFORMS (Measured data sampled at 50 kHz) 51000 packets of 144 samples from 2018-05-14T13:57:19.294.999. Part 120/147

Processed Mon May 14 16:05:37 2018 by ELM ver.2012-10-06 from 001__elm20180514_135718__dat00.bin

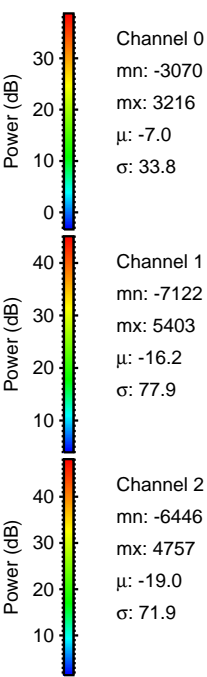
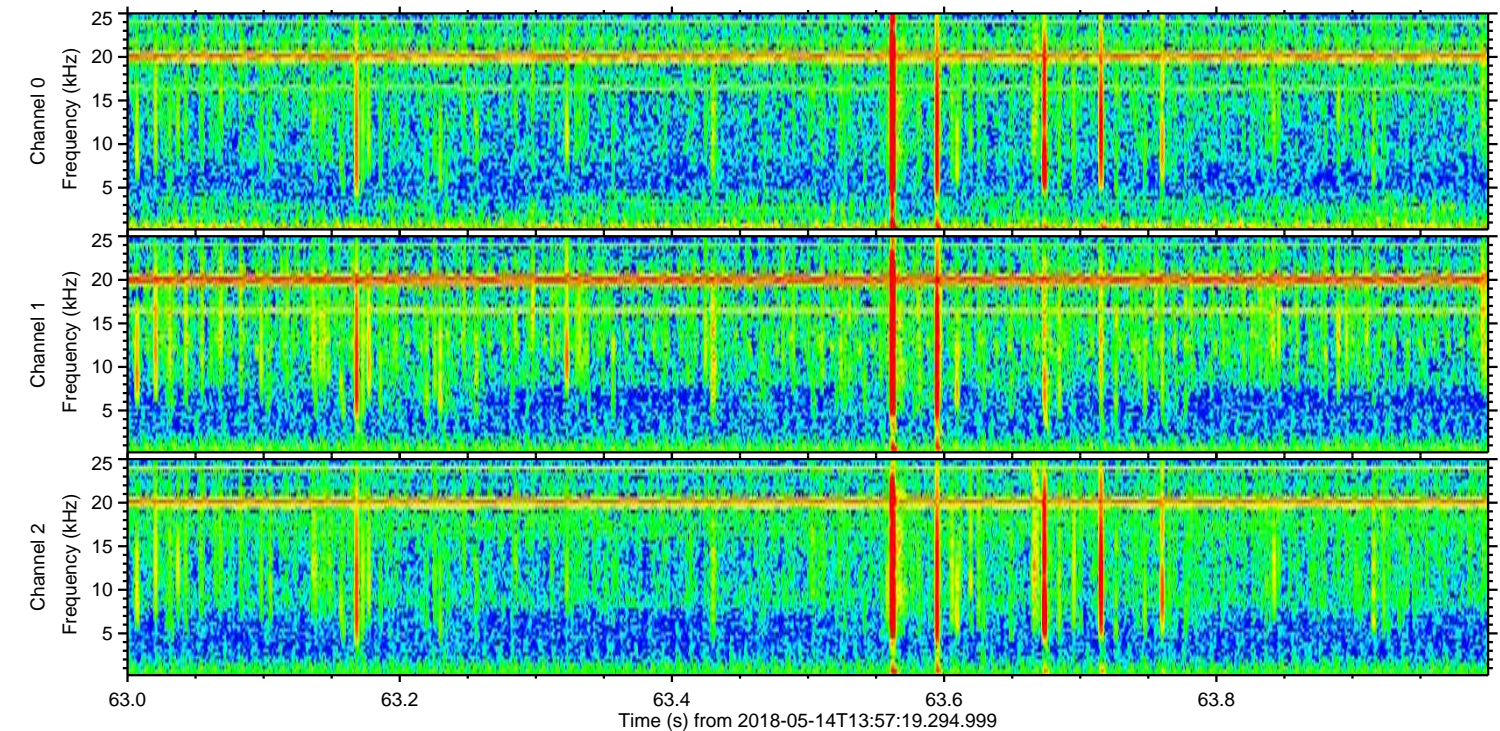
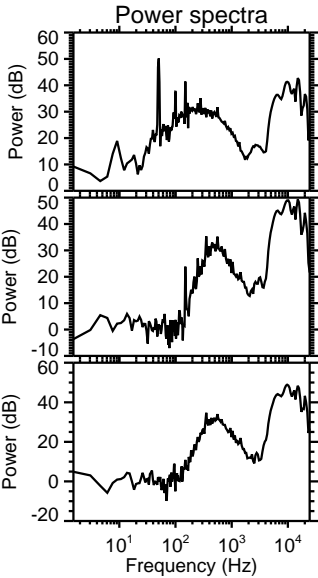
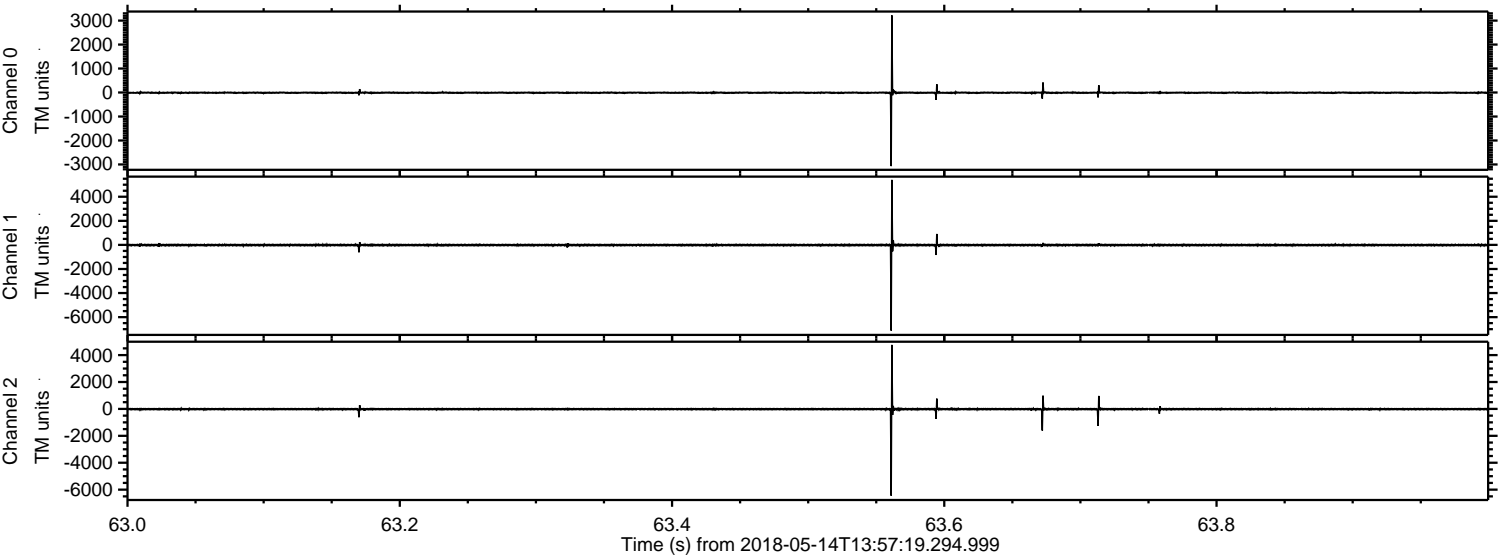


Channel 0
mn: -1912
mx: 2894
 μ : -7.0
 σ : 23.6

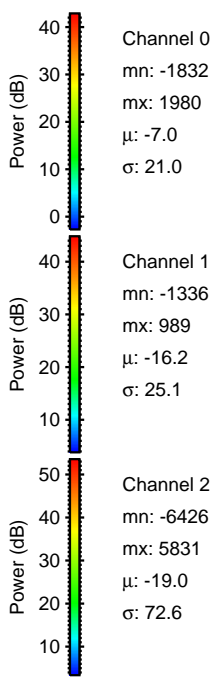
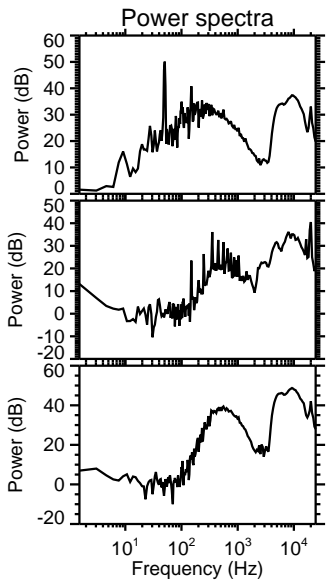
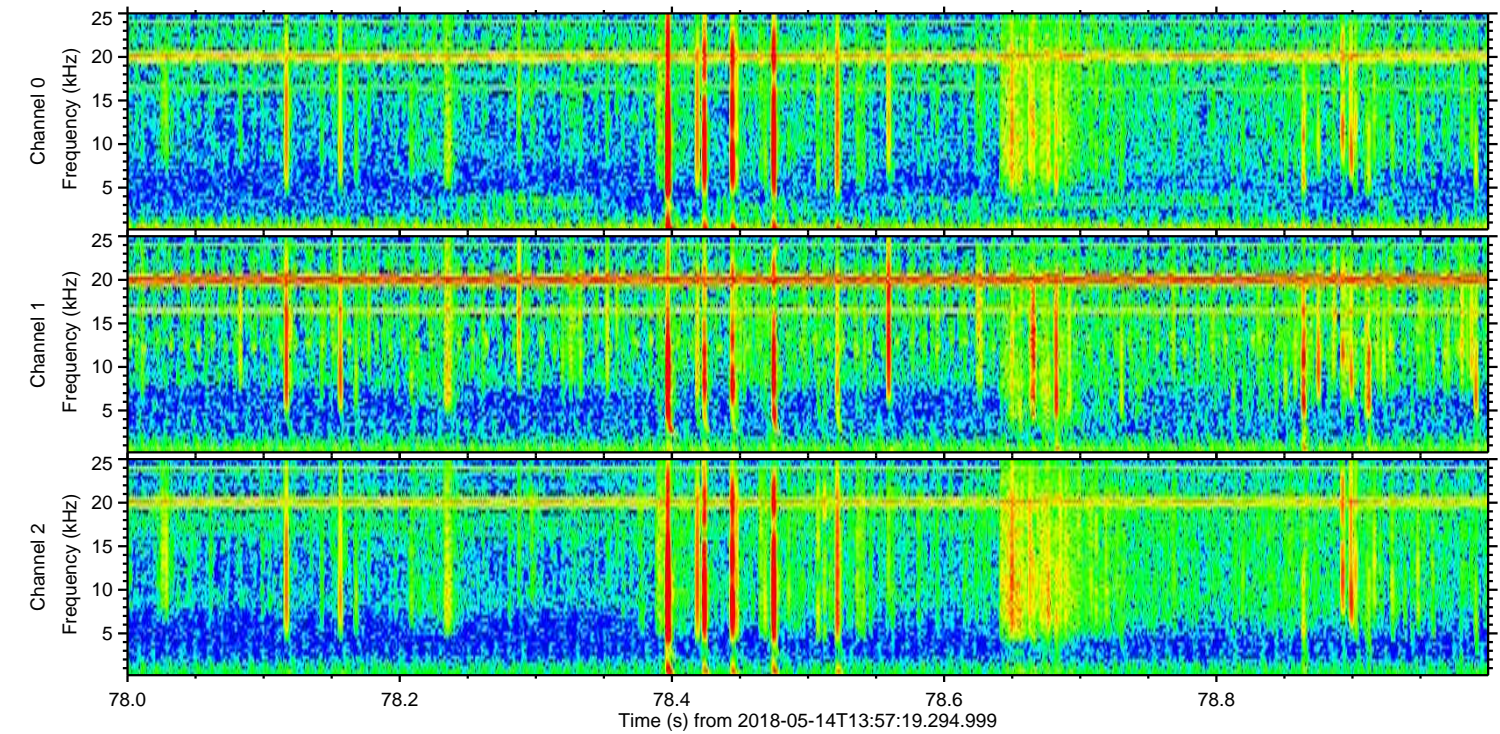
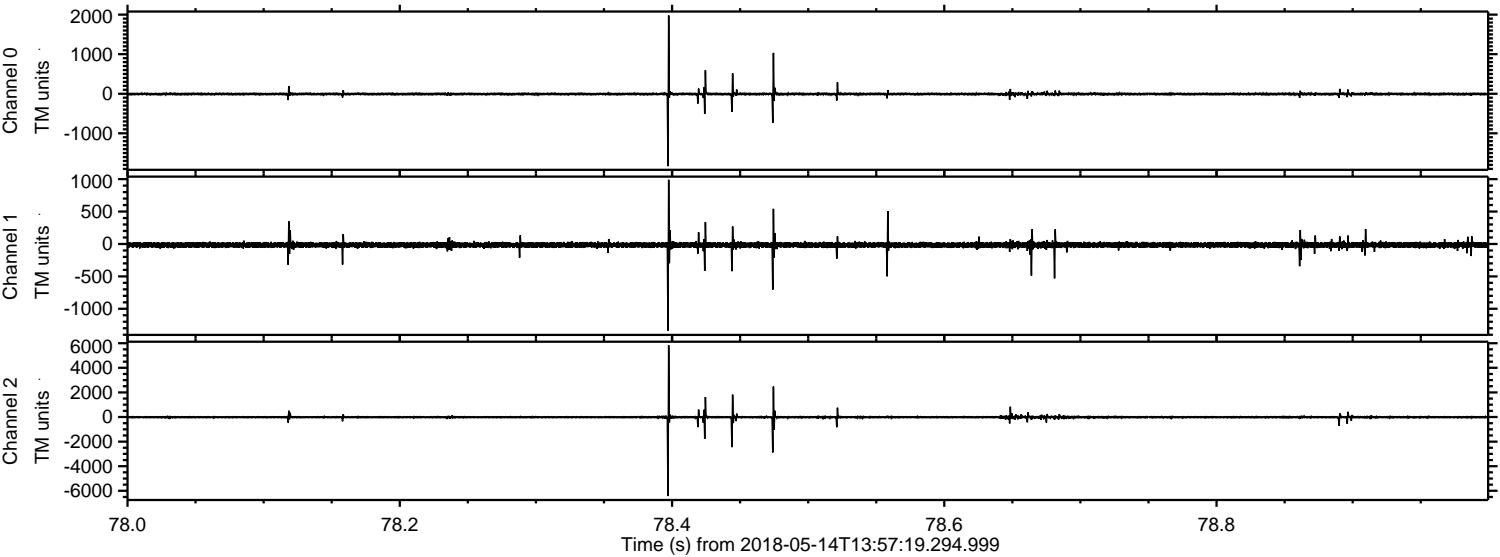
Channel 1
mn: -8213
mx: 5468
 μ : -16.2
 σ : 80.9

Channel 2
mn: -1596
mx: 1011
 μ : -19.1
 σ : 27.8

Processed Mon May 14 16:05:38 2018 by ELM ver.2012-10-06 from 001__elm20180514_135718__dat00.bin



Processed Mon May 14 16:05:39 2018 by ELM ver.2012-10-06 from 001__elm20180514_135718__dat00.bin

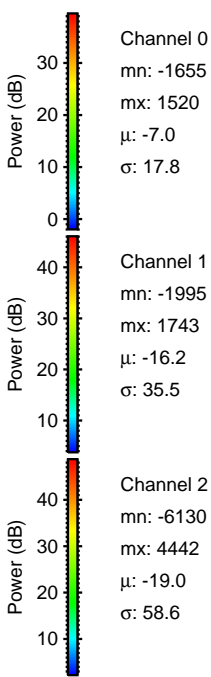
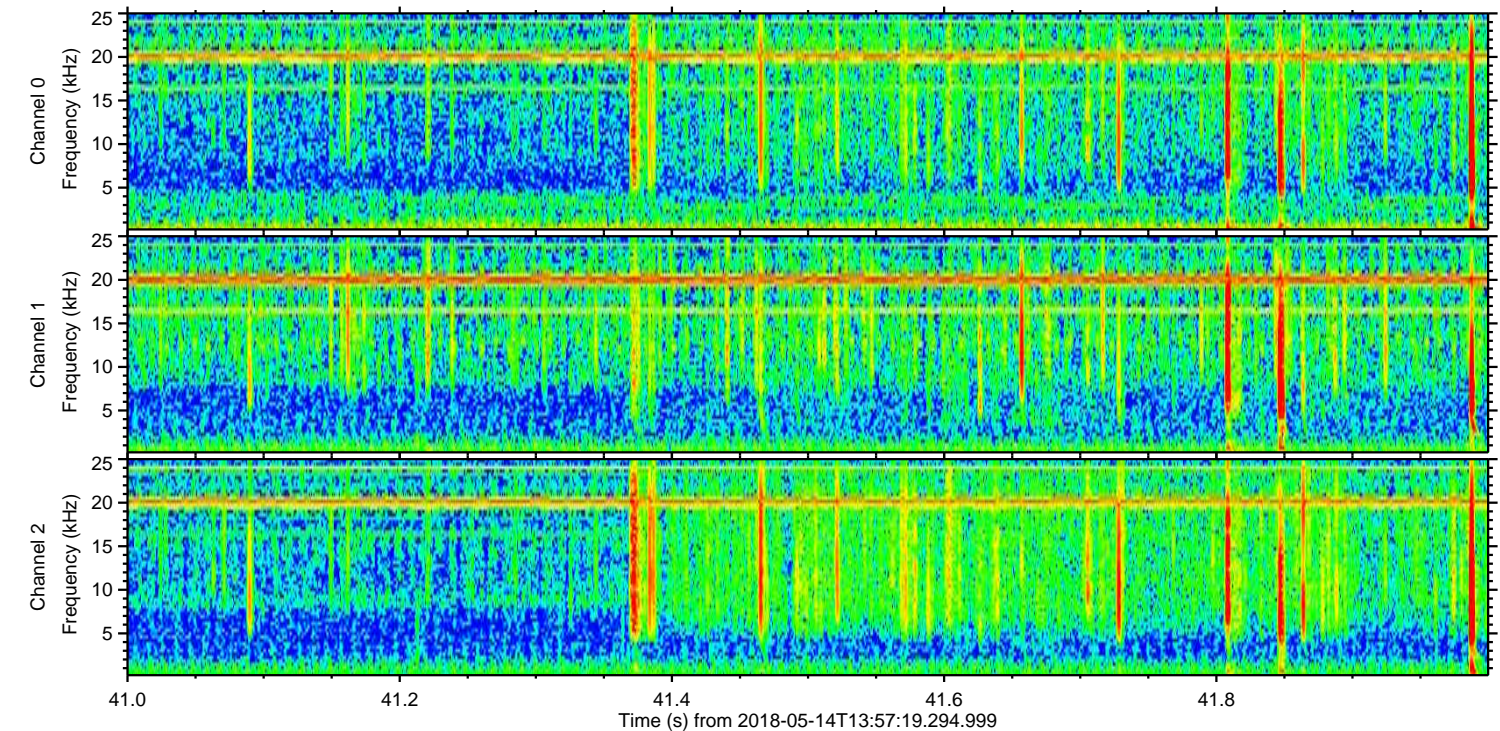
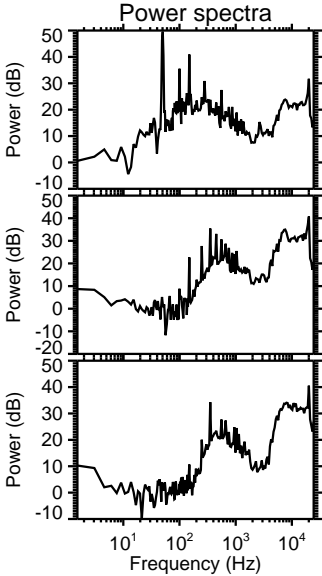
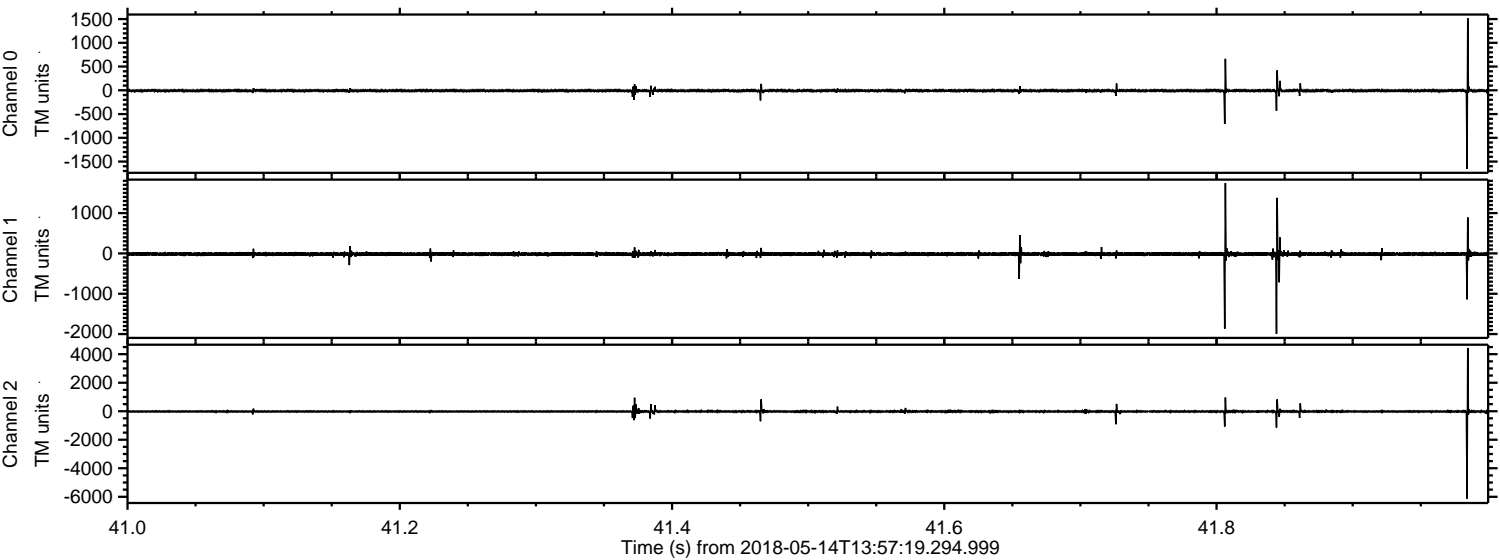


Channel 0
mn: -1832
mx: 1980
 μ : -7.0
 σ : 21.0

Channel 1
mn: -1336
mx: 989
 μ : -16.2
 σ : 25.1

Channel 2
mn: -6426
mx: 5831
 μ : -19.0
 σ : 72.6

Processed Mon May 14 16:05:39 2018 by ELM ver.2012-10-06 from 001__elm20180514_135718__dat00.bin



Processed Mon May 14 16:05:40 2018 by ELM ver.2012-10-06 from 001__elm20180514_135718__dat00.bin

