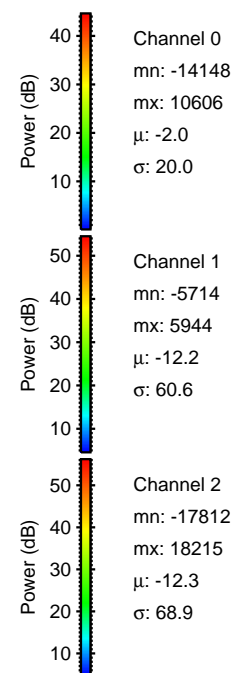
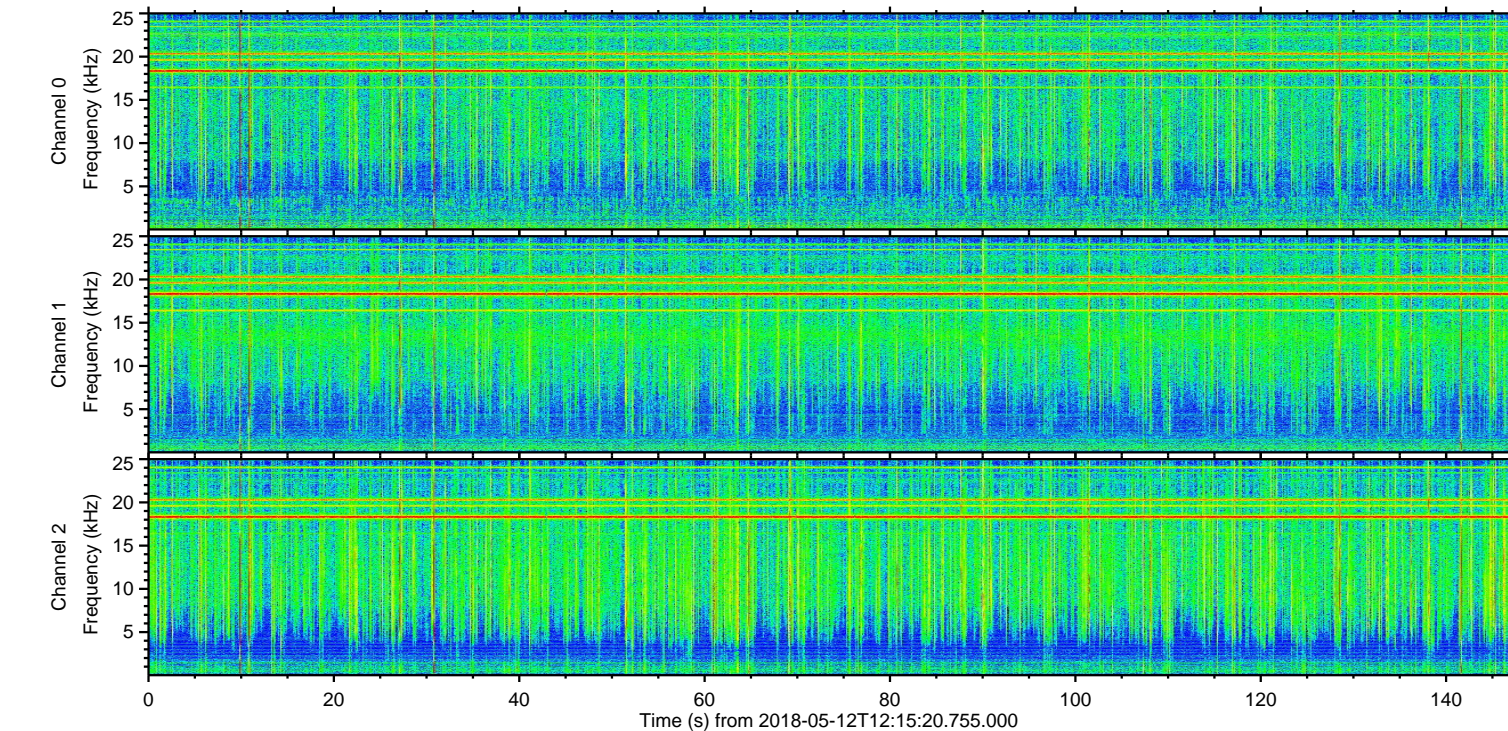
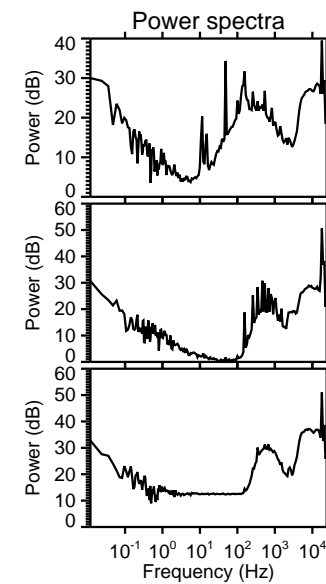
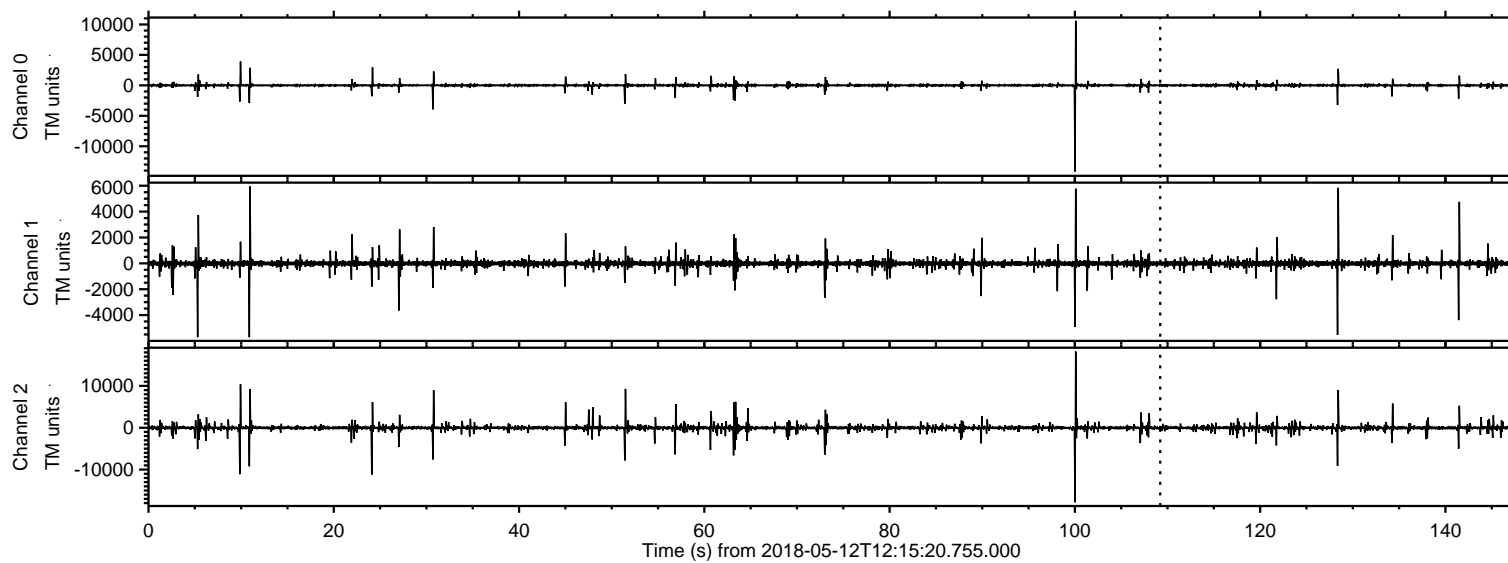


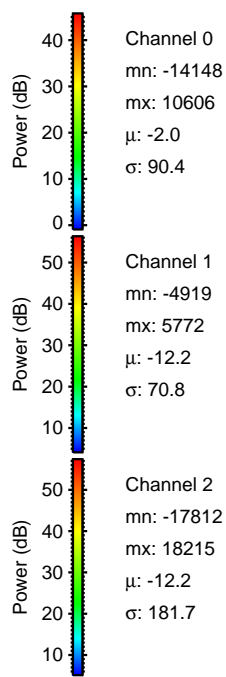
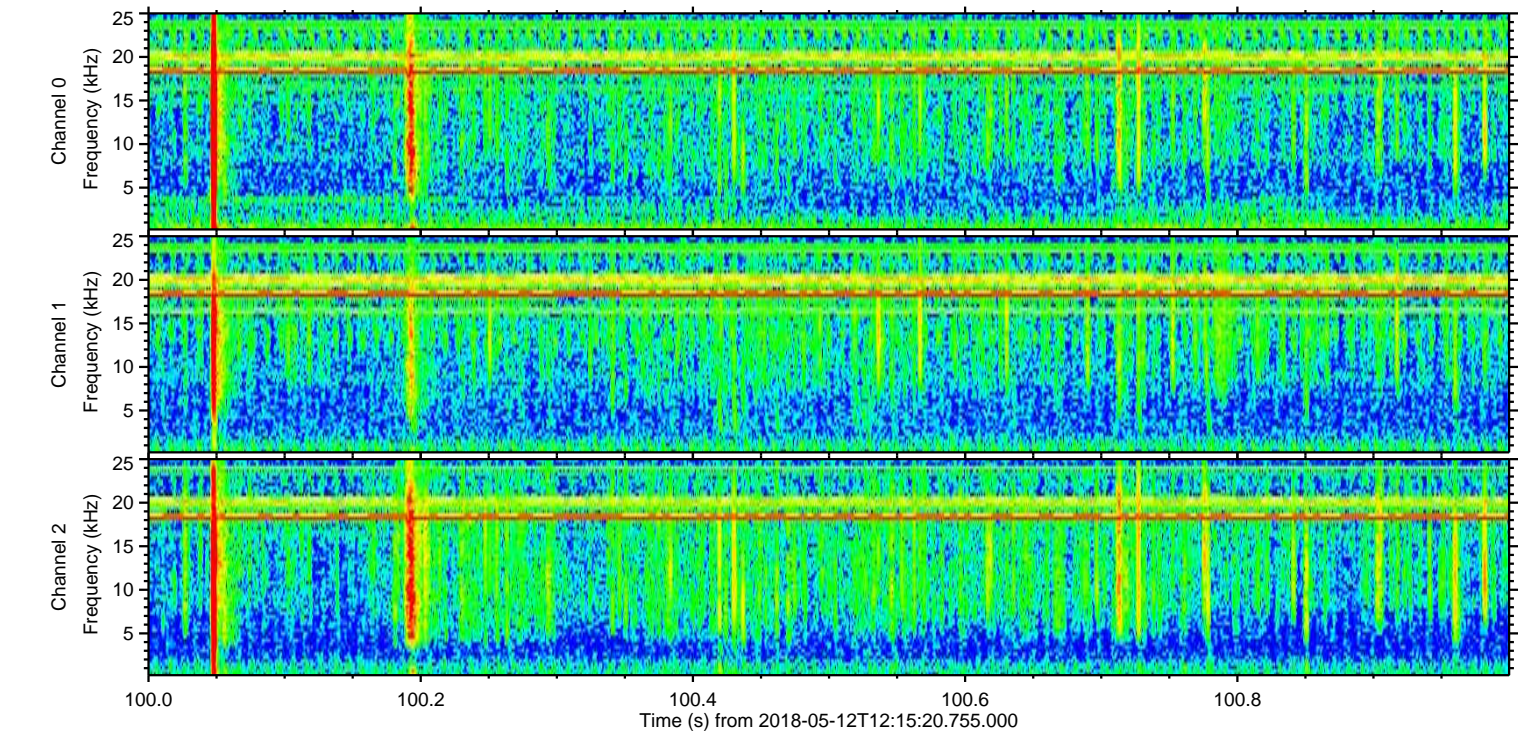
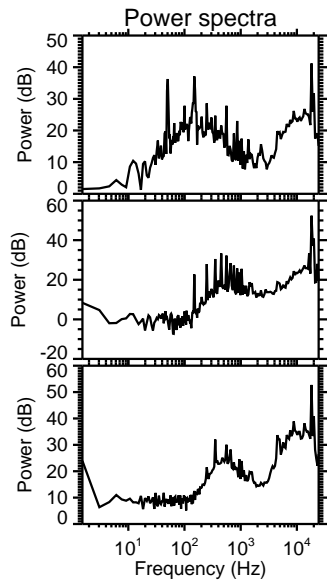
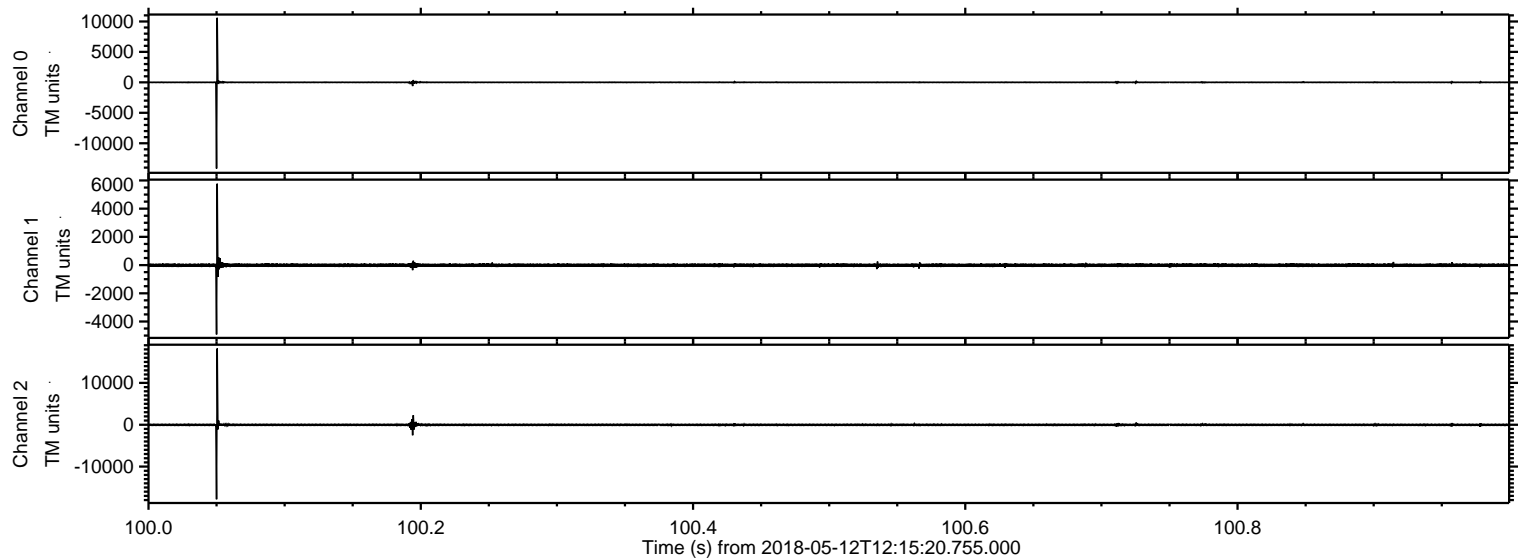
ELMAVAN 3D WAVEFORMS (Measured data sampled at 50 kHz) 50999 packets of 144 samples from 2018-05-12T12:15:20.755.000.

Processed Sat May 12 14:23:20 2018 by ELM ver.2012-10-06 from 001__elm20180512_121519__dat00.bin

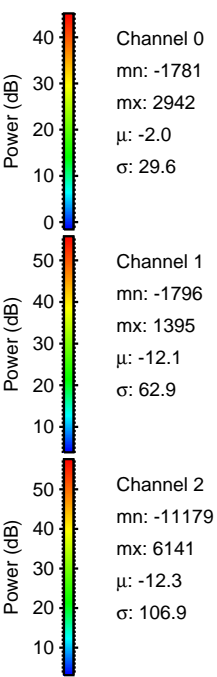
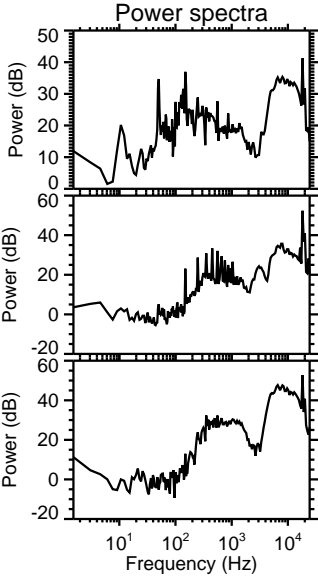
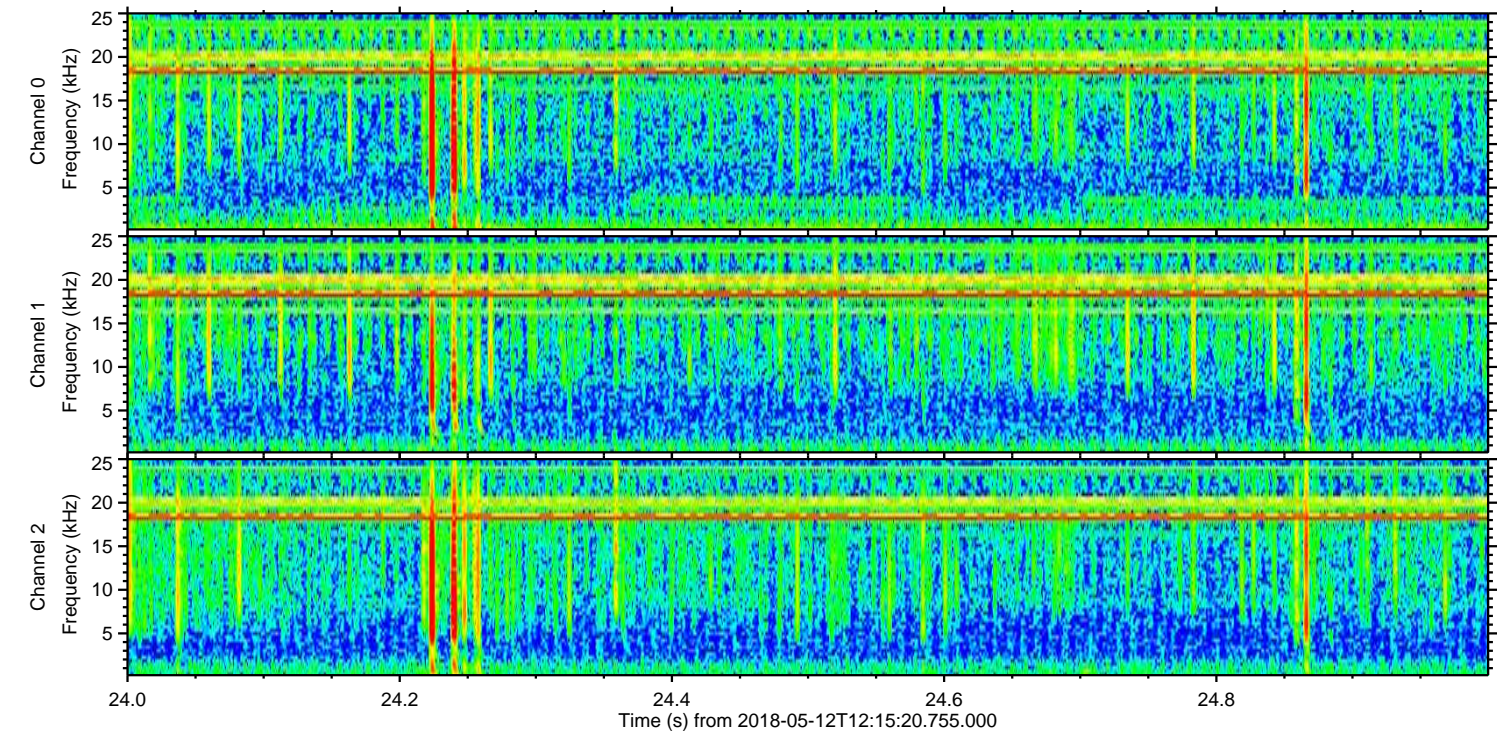
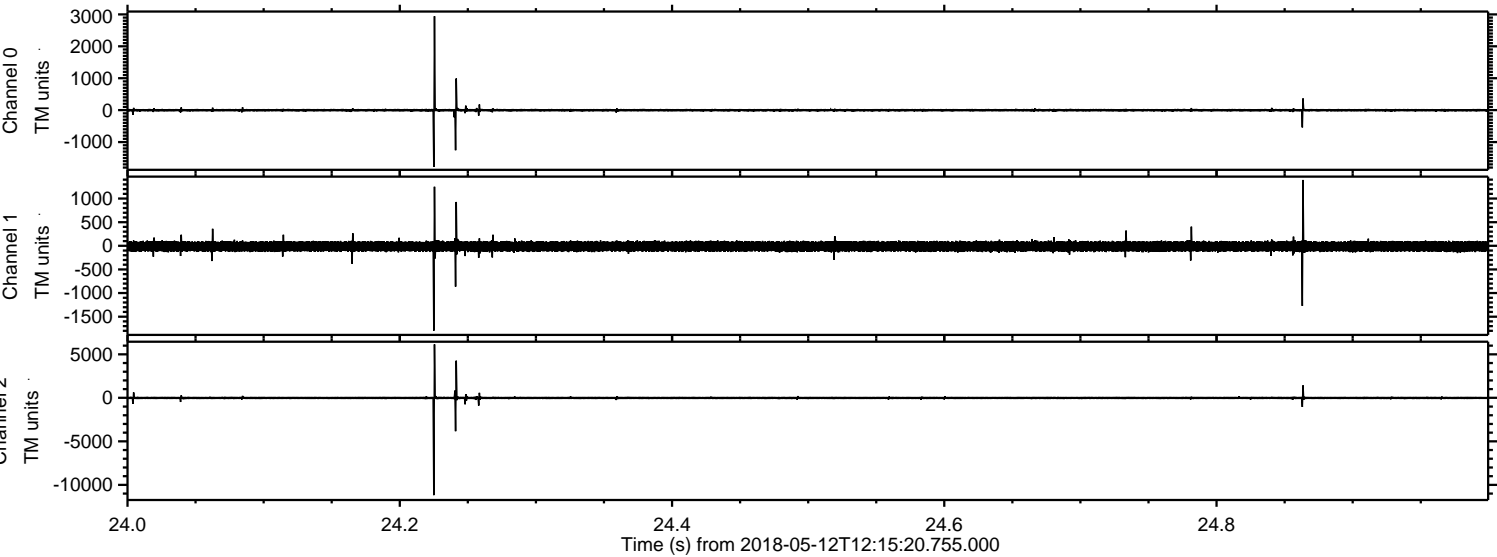


ELMAVAN 3D WAVEFORMS (Measured data sampled at 50 kHz) 50999 packets of 144 samples from 2018-05-12T12:15:20.755.000. Part 101/147

Processed Sat May 12 14:23:26 2018 by ELM ver.2012-10-06 from 001__elm20180512_121519__dat00.bin

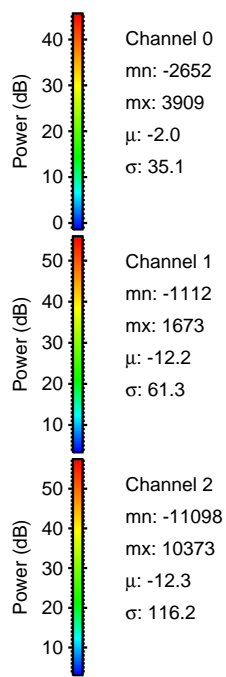
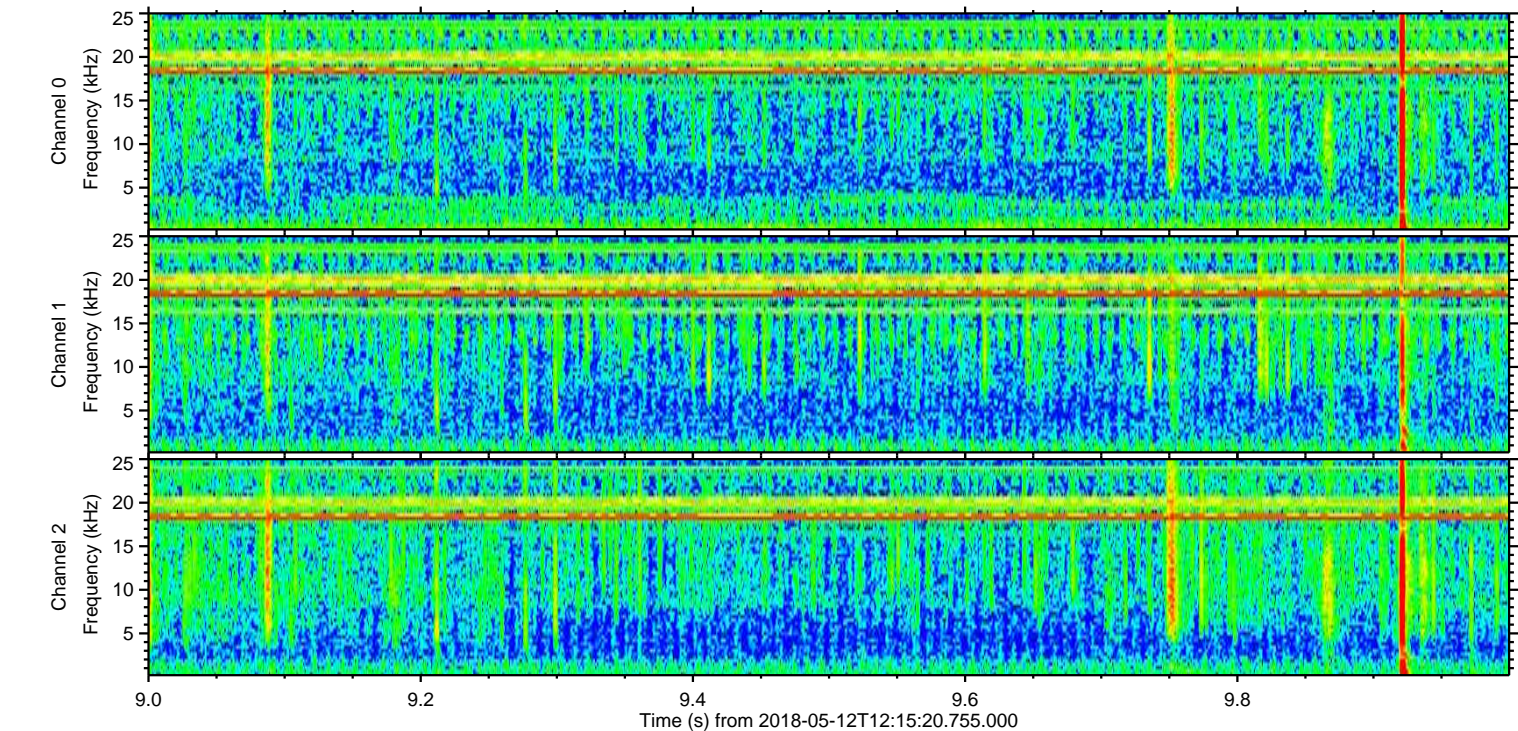
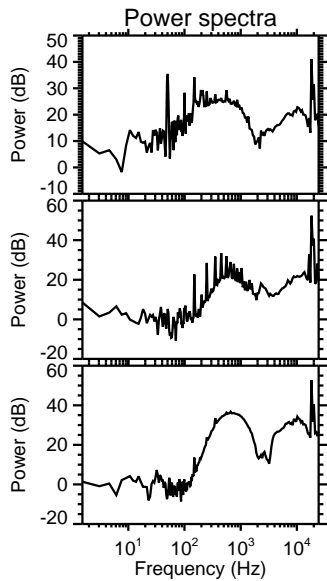
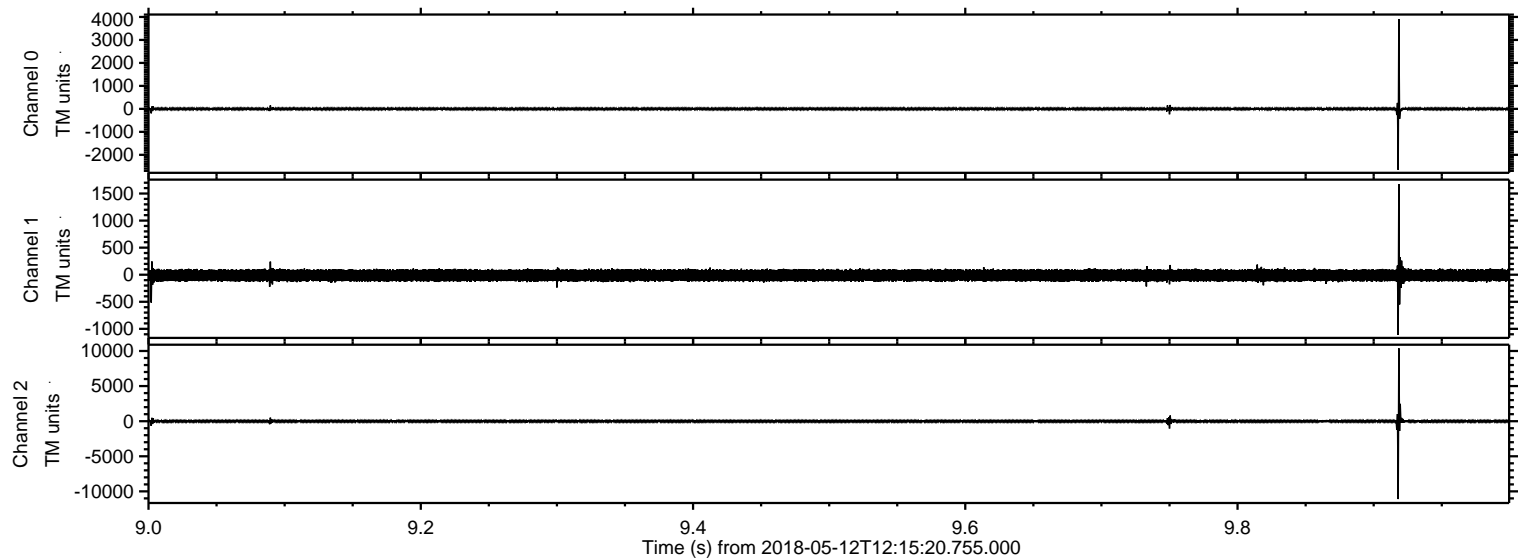


Processed Sat May 12 14:23:27 2018 by ELM ver.2012-10-06 from 001__elm20180512_121519__dat00.bin

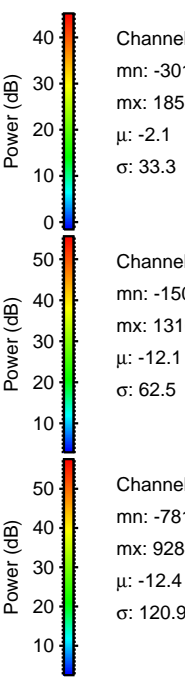
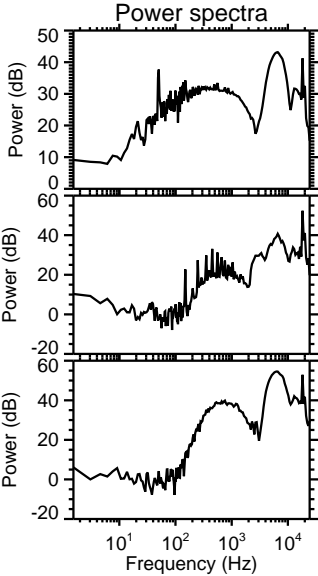
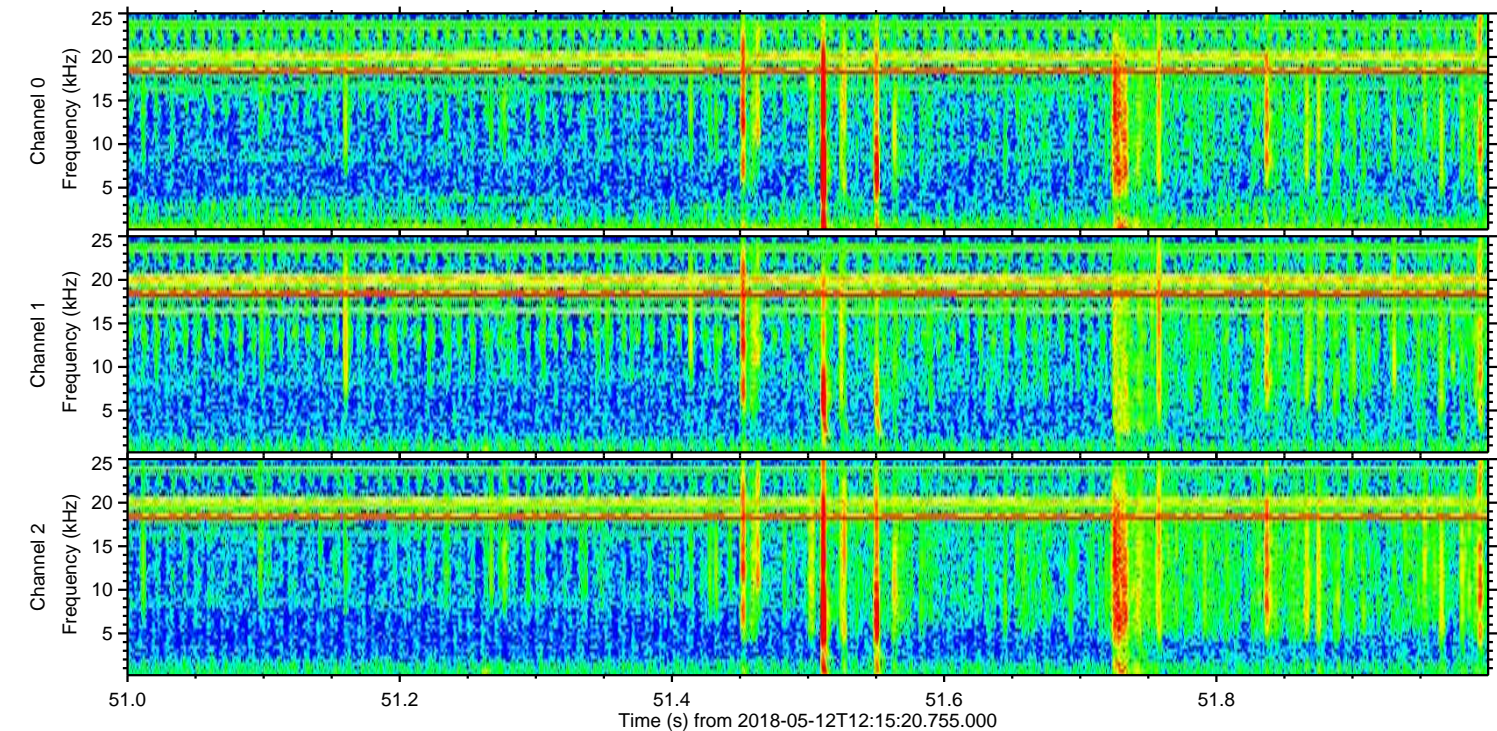
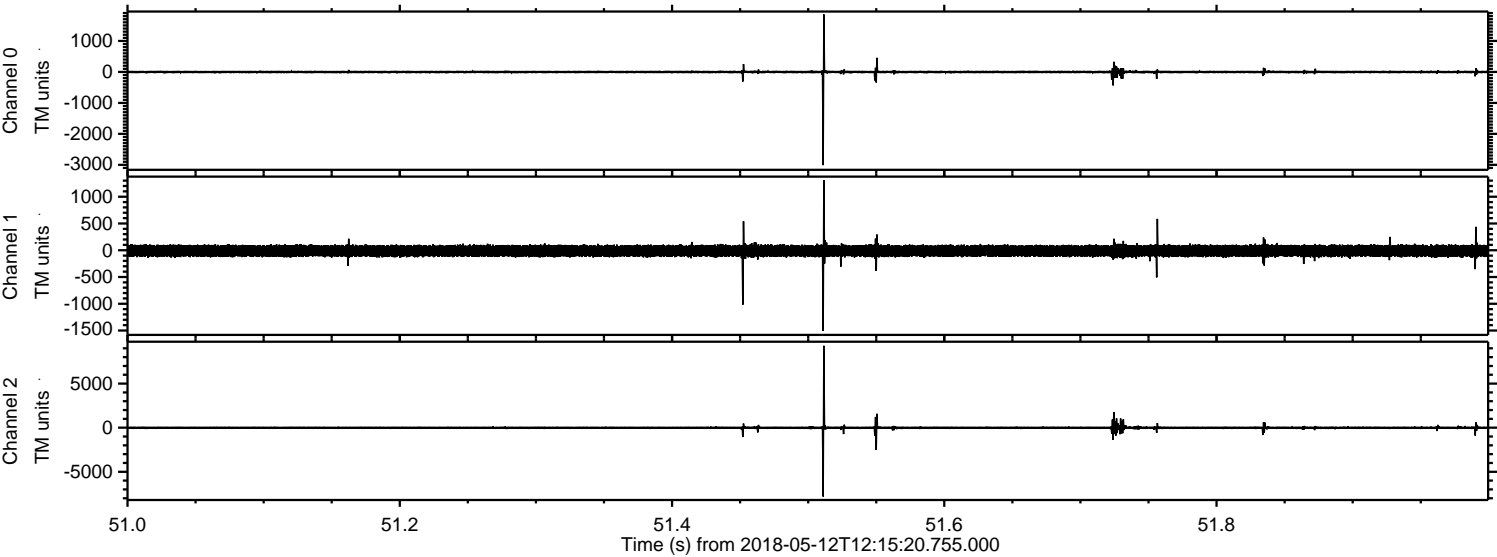


ELMAVAN 3D WAVEFORMS (Measured data sampled at 50 kHz) 50999 packets of 144 samples from 2018-05-12T12:15:20.755.000. Part 10/147

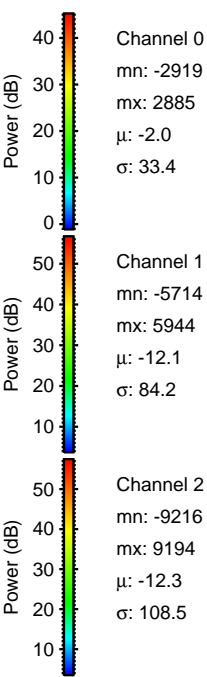
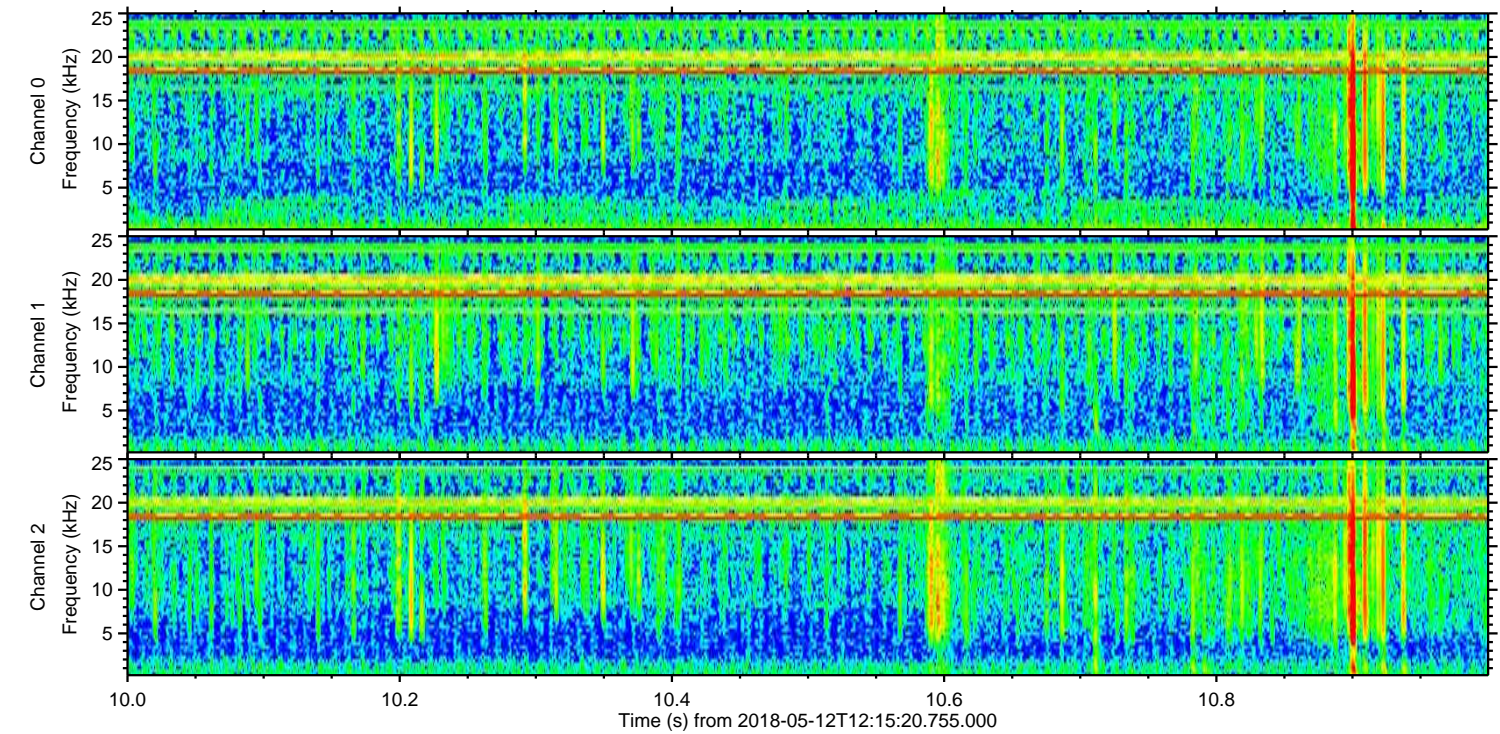
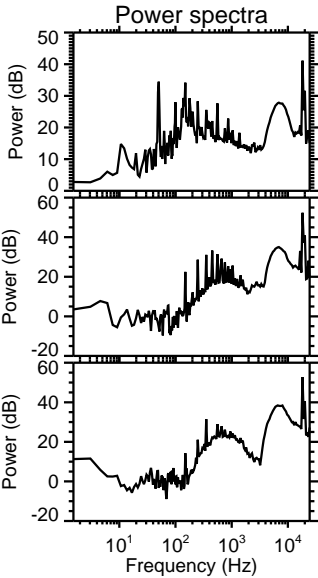
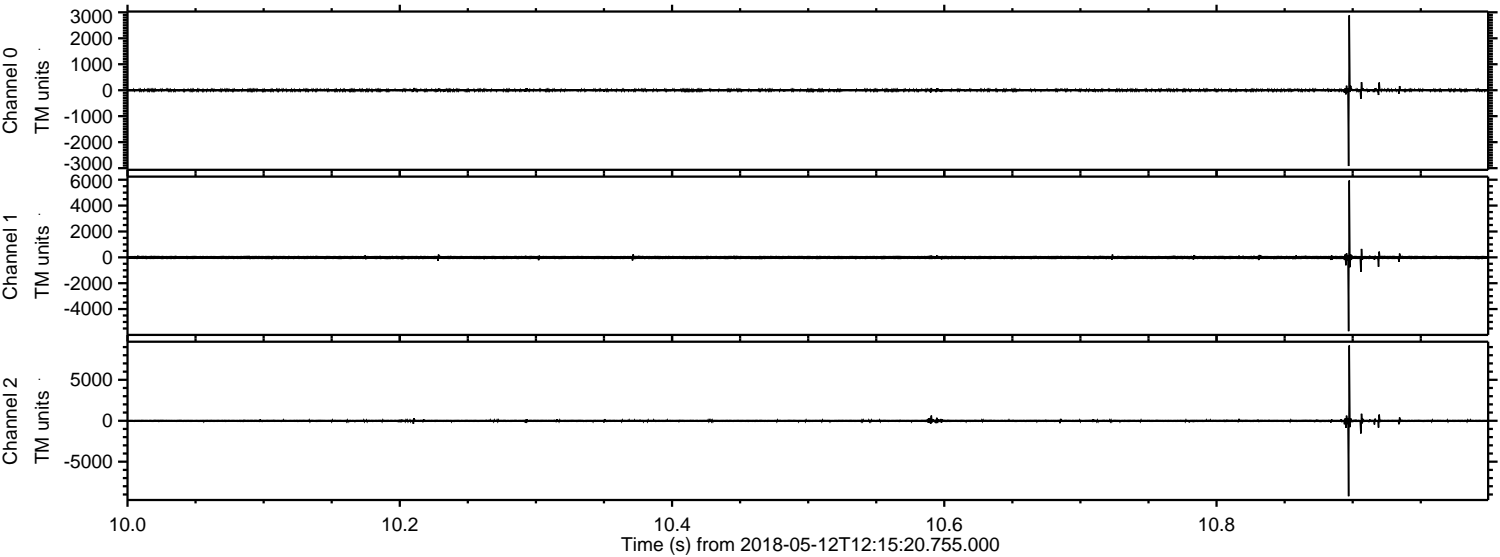
Processed Sat May 12 14:23:28 2018 by ELM ver.2012-10-06 from 001__elm20180512_121519__dat00.bin



Processed Sat May 12 14:23:29 2018 by ELM ver.2012-10-06 from 001__elm20180512_121519__dat00.bin

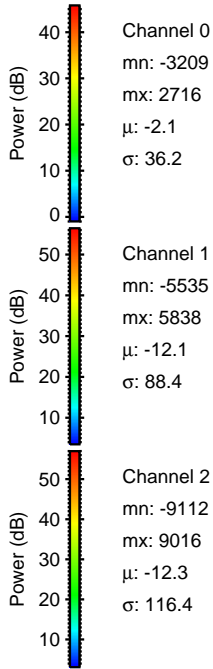
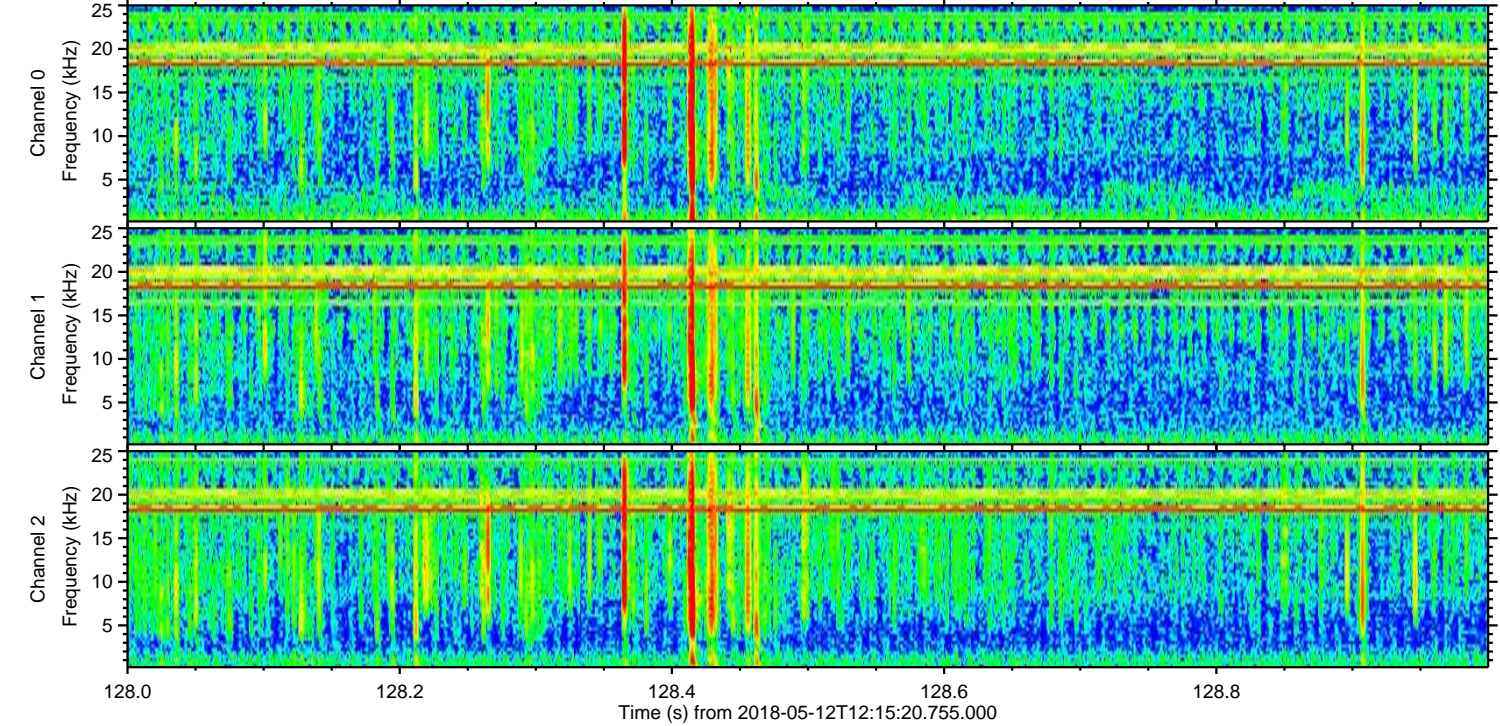
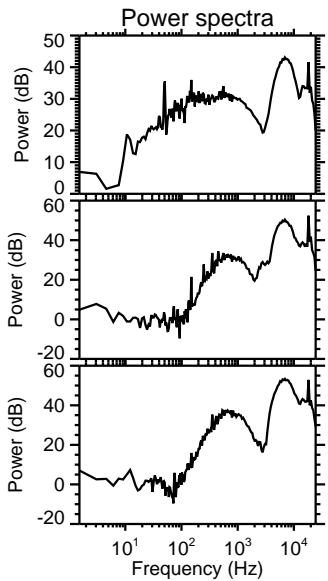
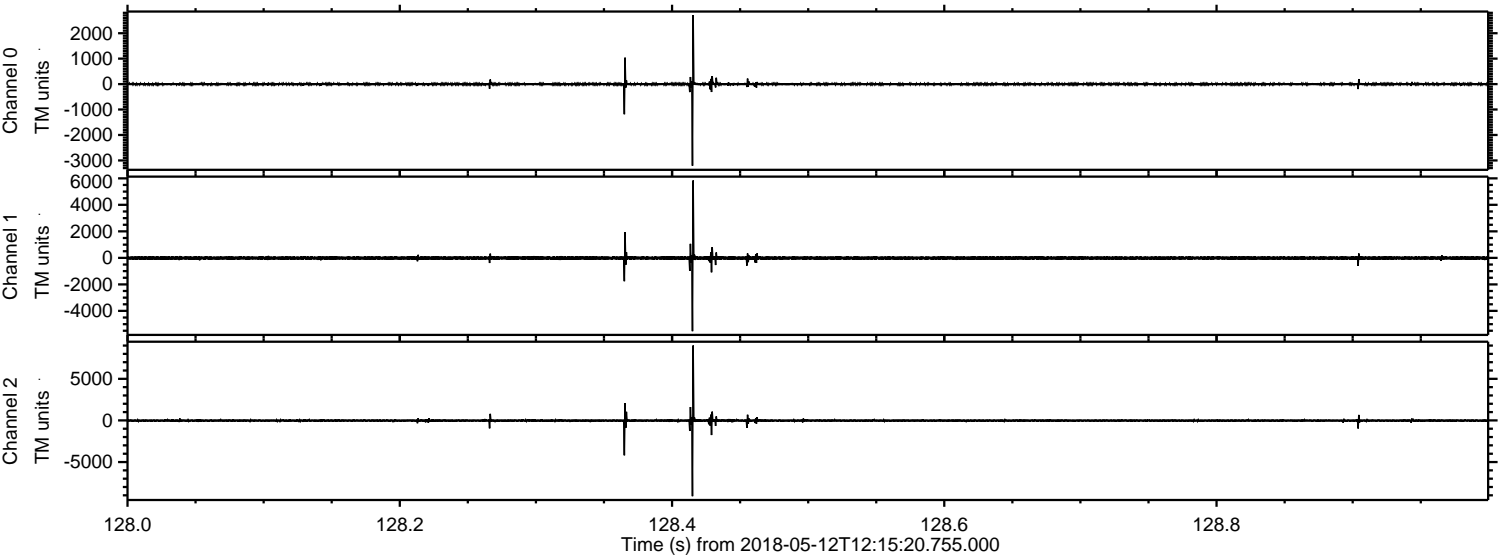


Processed Sat May 12 14:23:29 2018 by ELM ver.2012-10-06 from 001__elm20180512_121519__dat00.bin



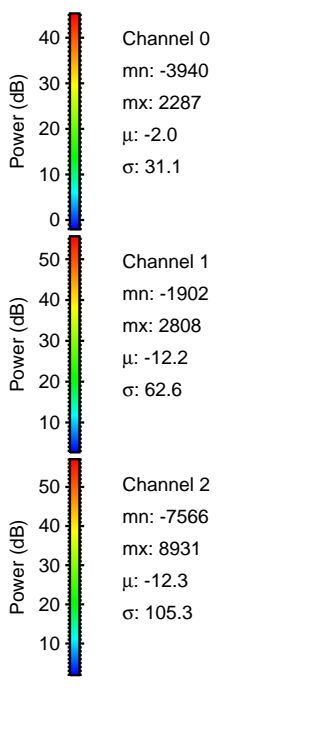
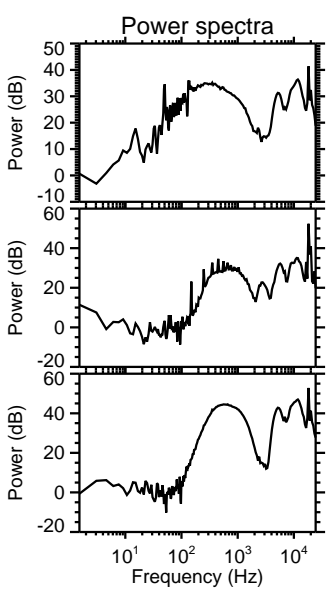
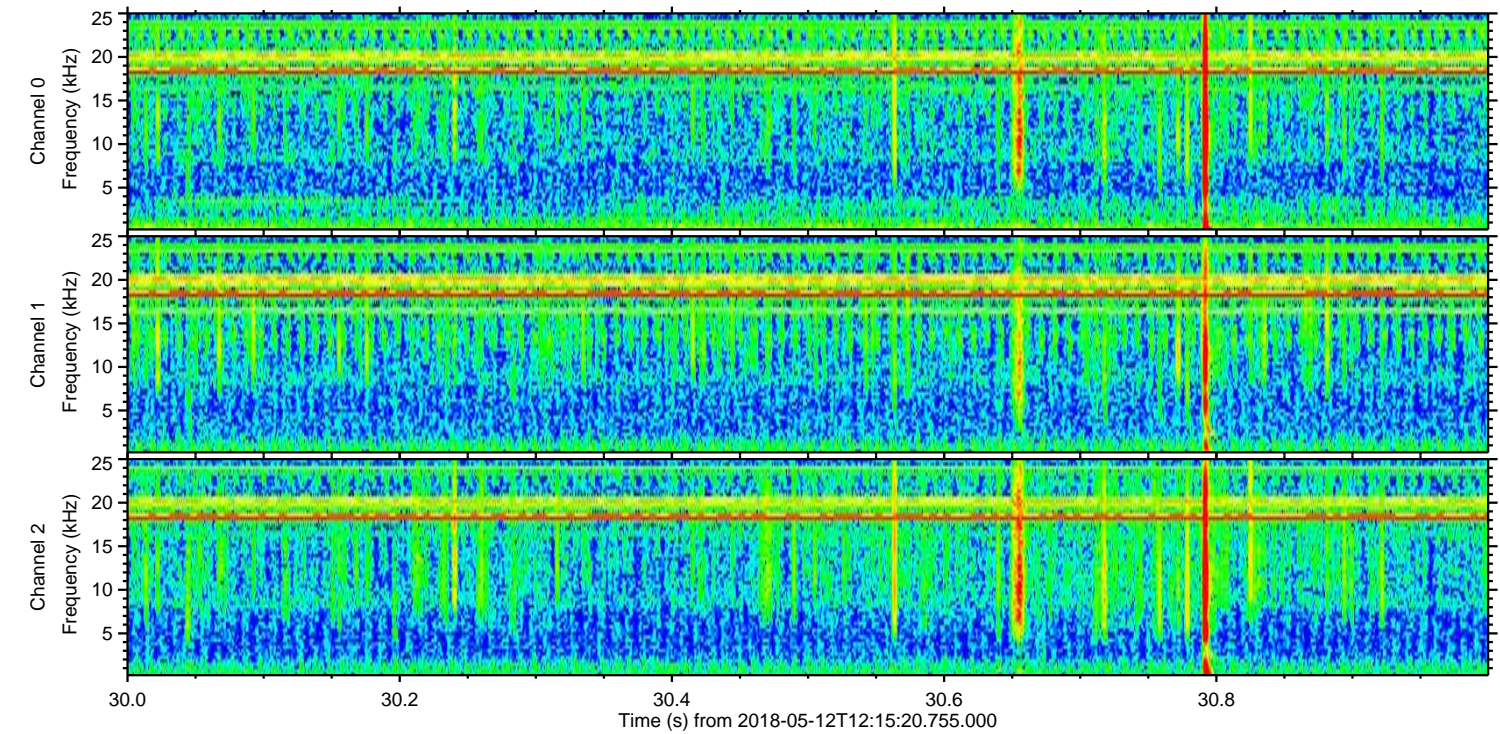
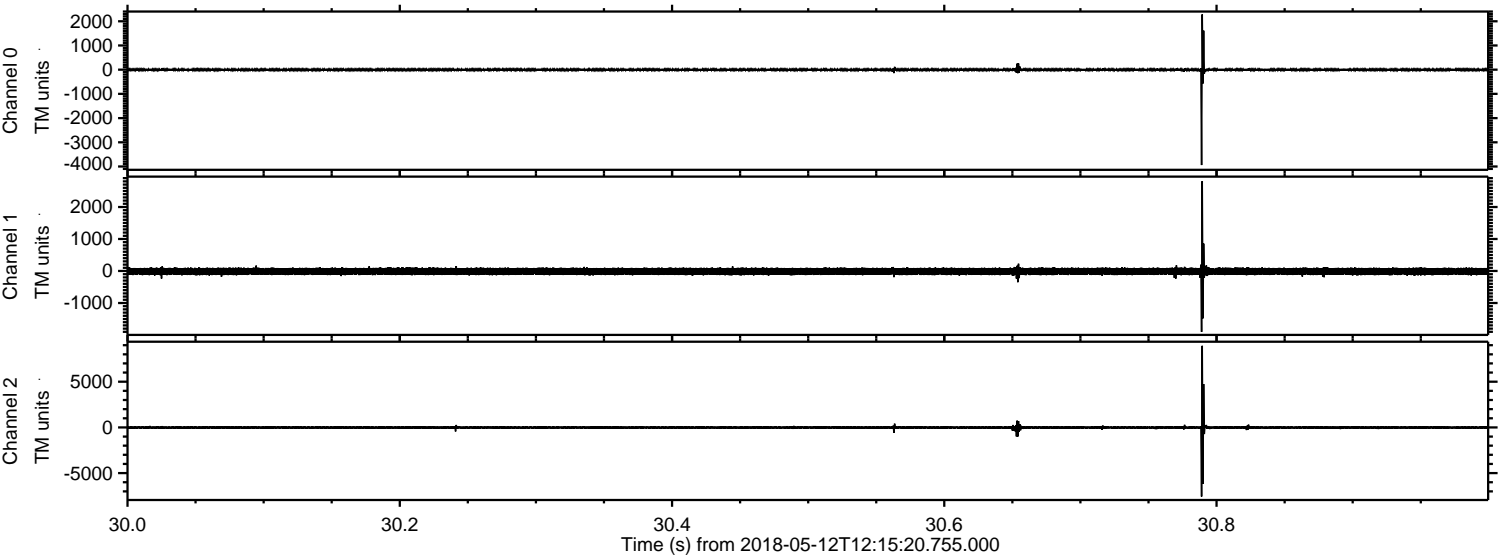
ELMAVAN 3D WAVEFORMS (Measured data sampled at 50 kHz) 50999 packets of 144 samples from 2018-05-12T12:15:20.755.000. Part 129/147

Processed Sat May 12 14:23:30 2018 by ELM ver.2012-10-06 from 001__elm20180512_121519__dat00.bin

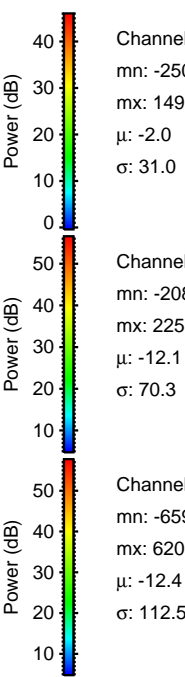
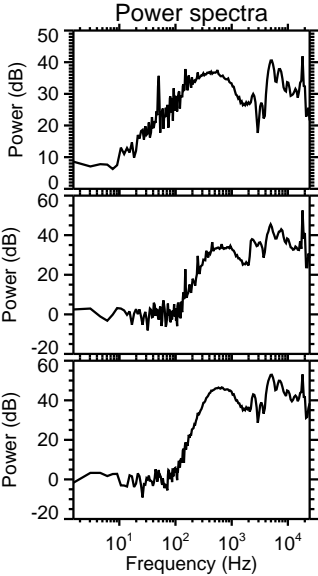
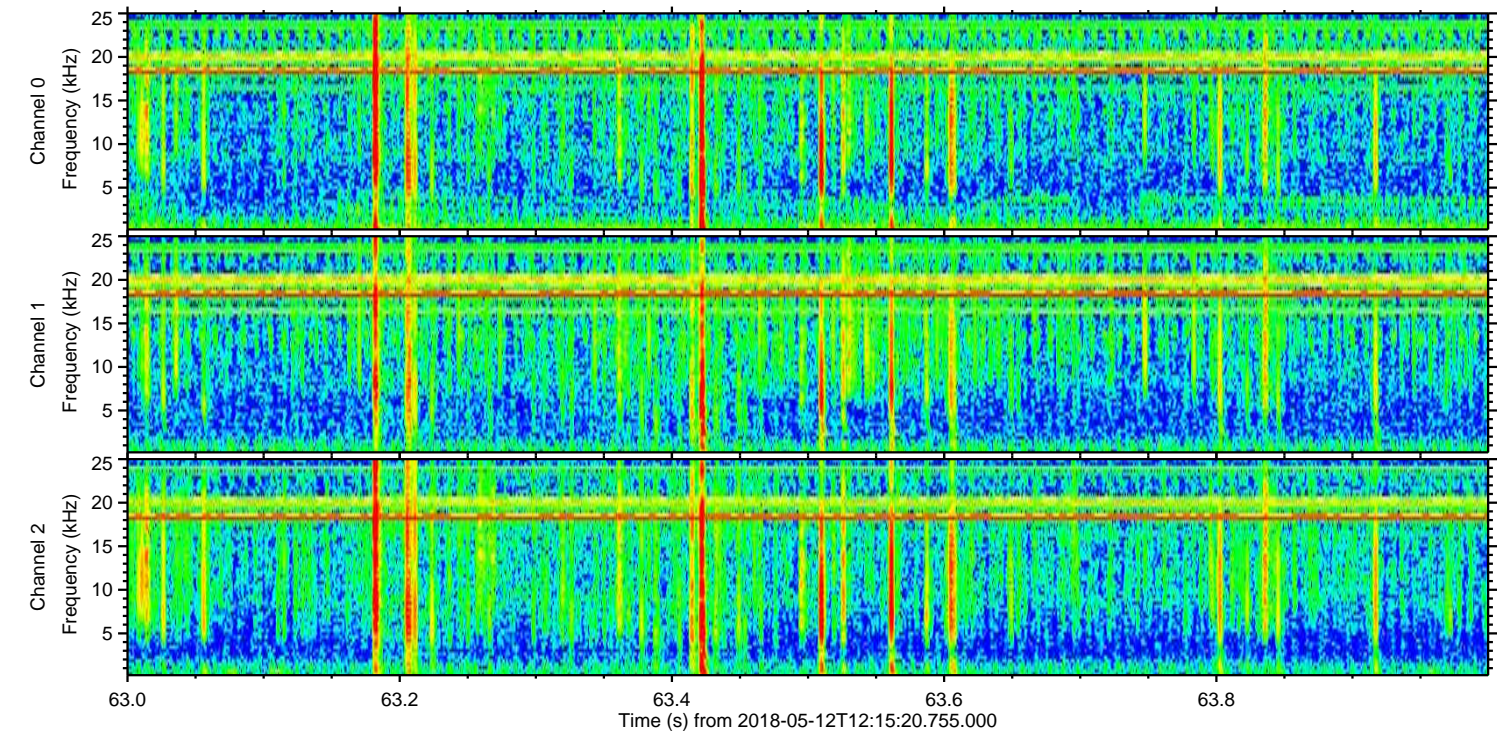
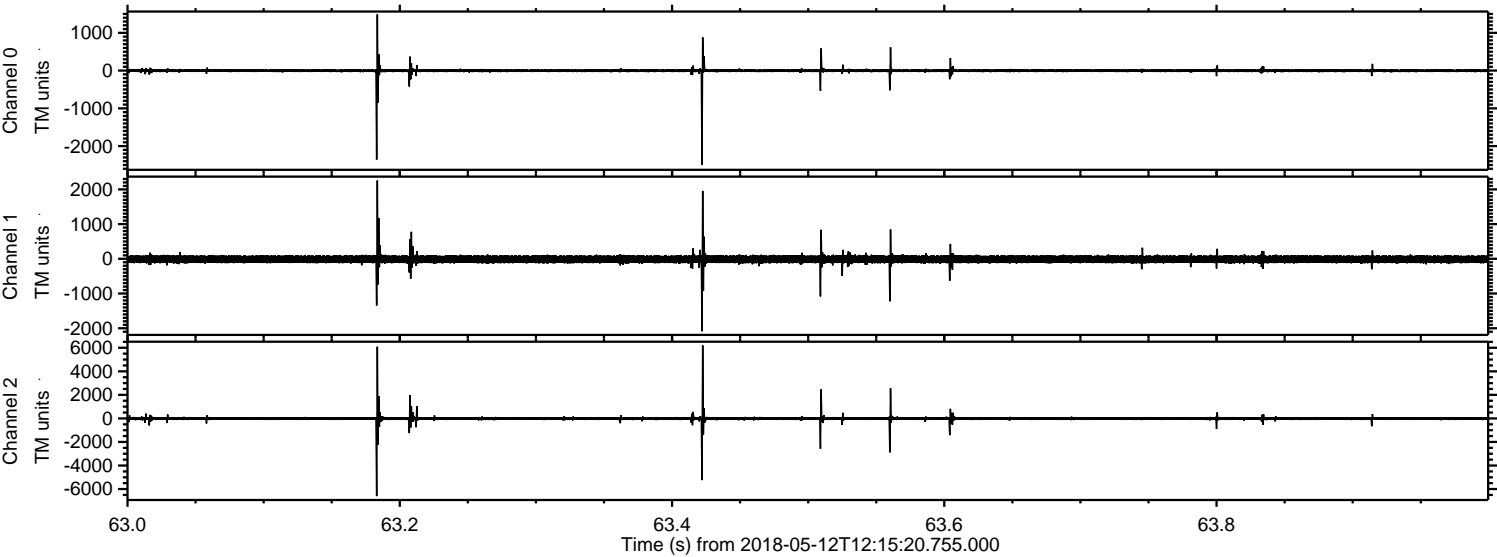


ELMAVAN 3D WAVEFORMS (Measured data sampled at 50 kHz) 50999 packets of 144 samples from 2018-05-12T12:15:20.755.000. Part 31/147

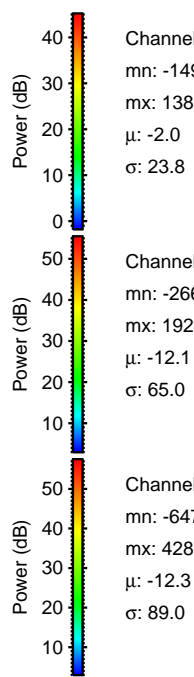
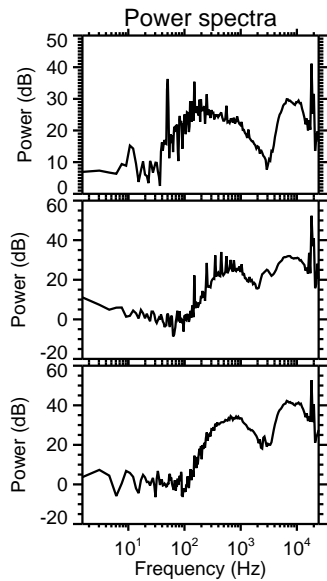
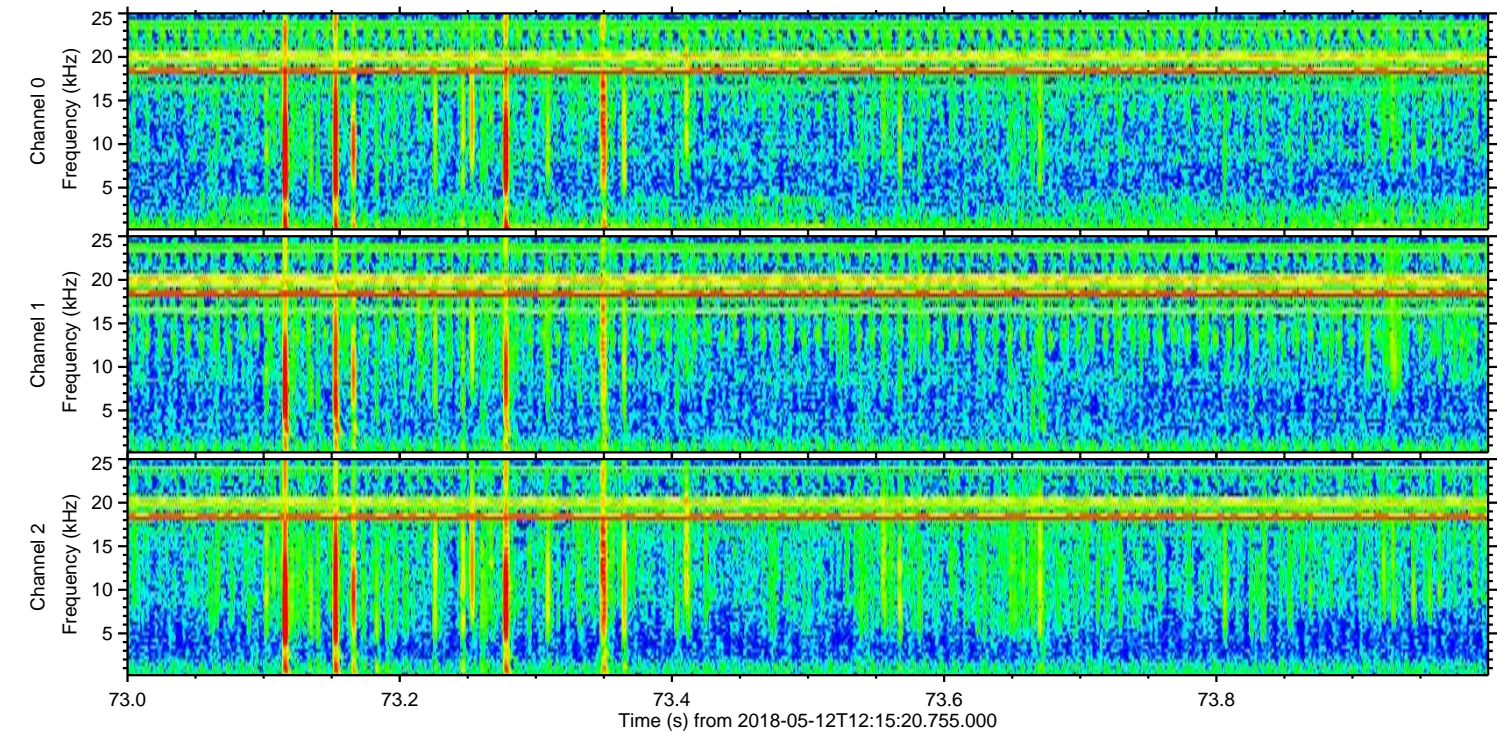
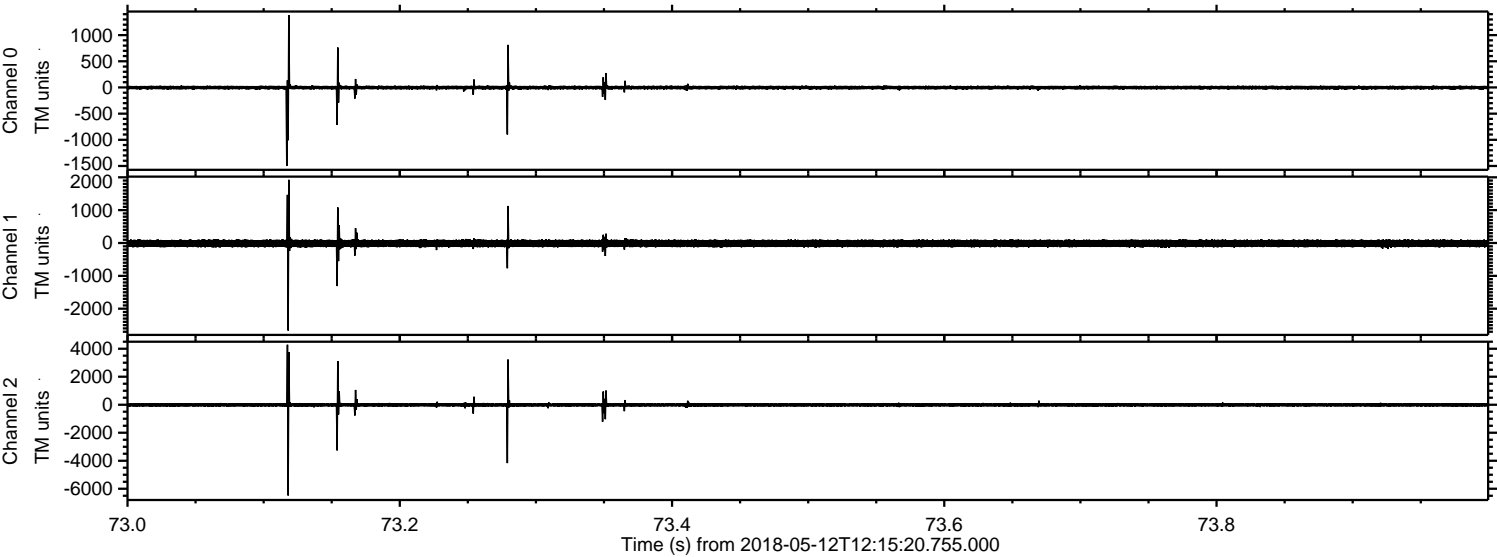
Processed Sat May 12 14:23:31 2018 by ELM ver.2012-10-06 from 001__elm20180512_121519__dat00.bin



Processed Sat May 12 14:23:32 2018 by ELM ver.2012-10-06 from 001__elm20180512_121519__dat00.bin



Processed Sat May 12 14:23:32 2018 by ELM ver.2012-10-06 from 001__elm20180512_121519__dat00.bin



Channel 0
mn: -1499
mx: 1382
 μ : -2.0
 σ : 23.8

Channel 1
mn: -2664
mx: 1924
 μ : -12.1
 σ : 65.0

Channel 2
mn: -6479
mx: 4287
 μ : -12.3
 σ : 89.0

