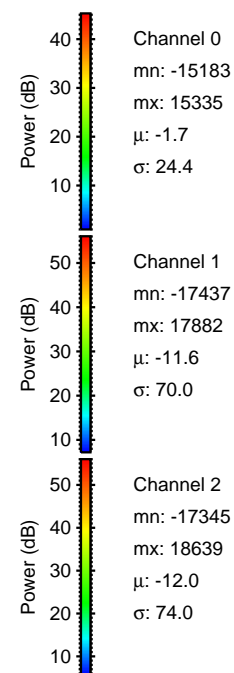
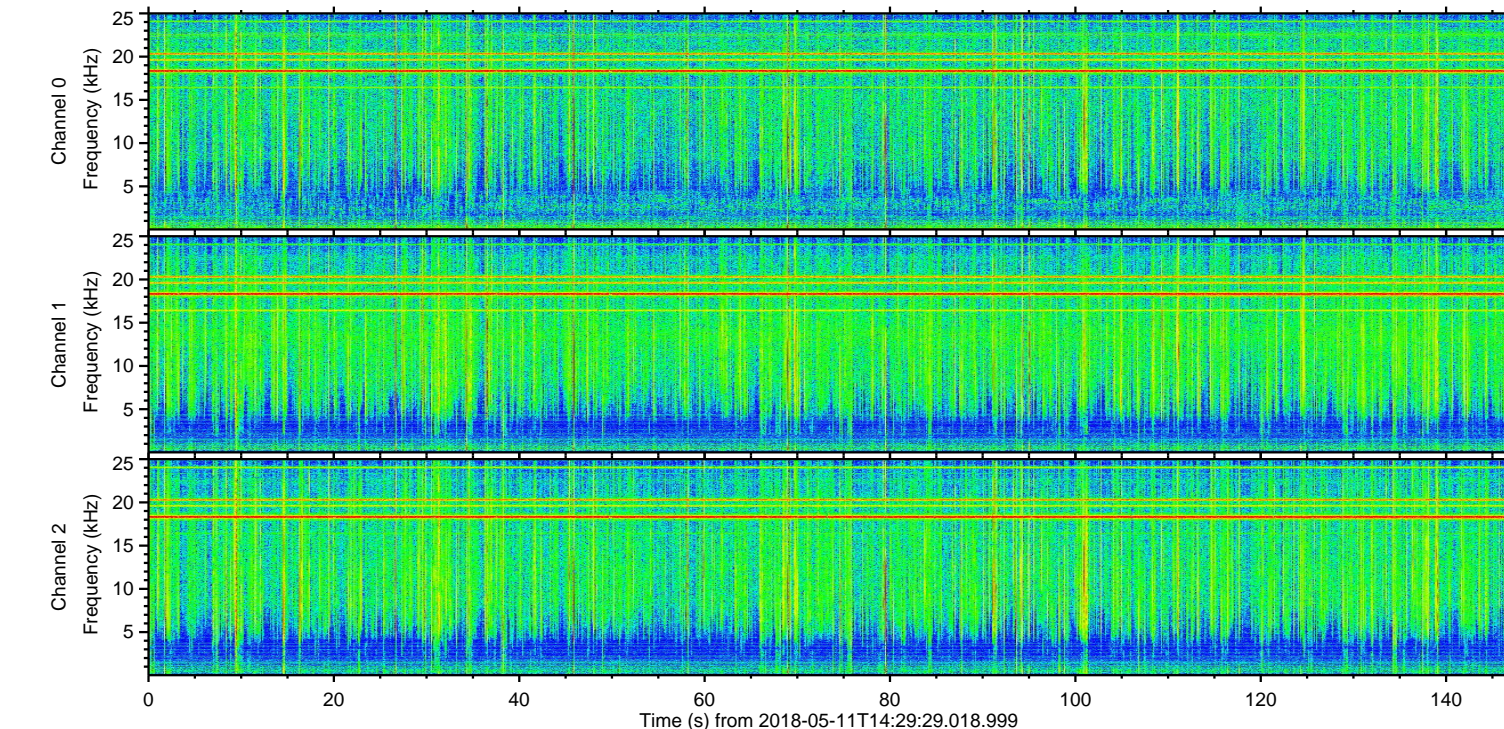
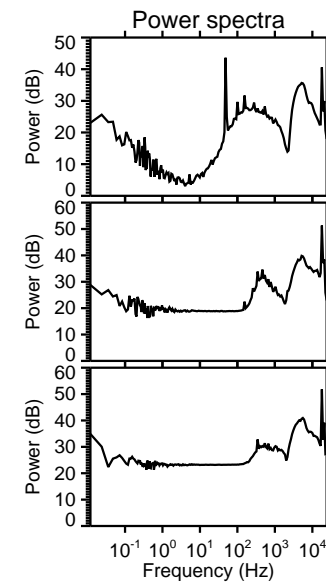
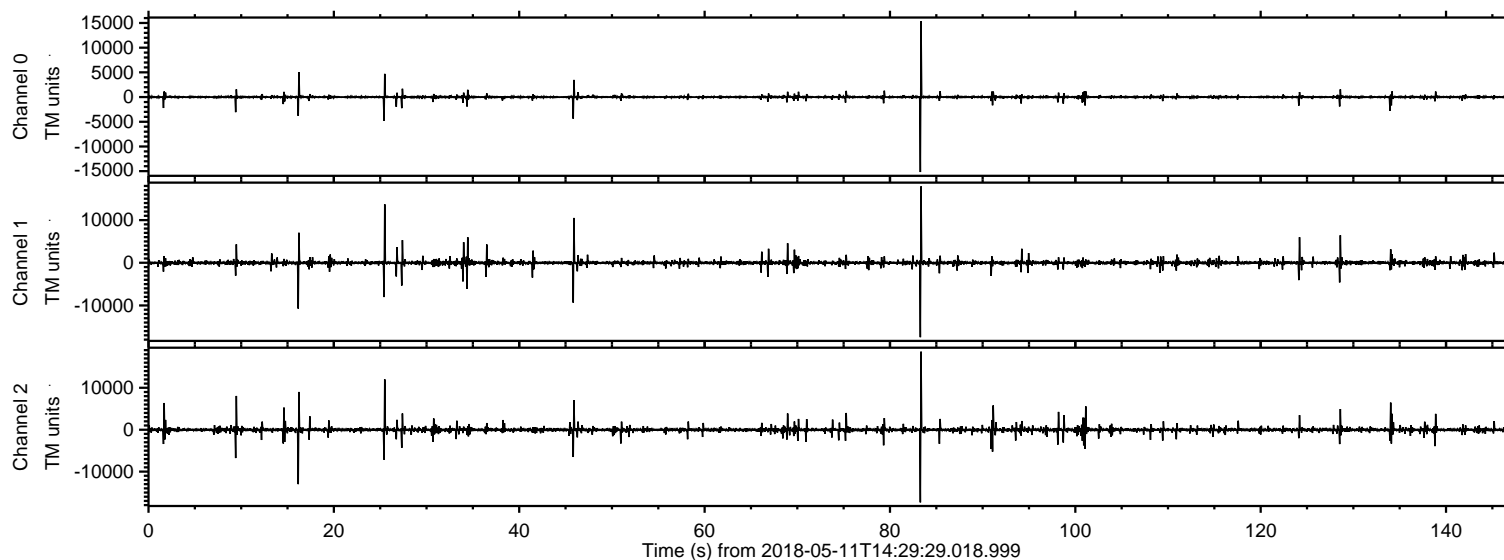


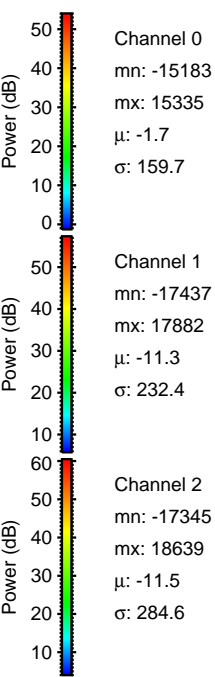
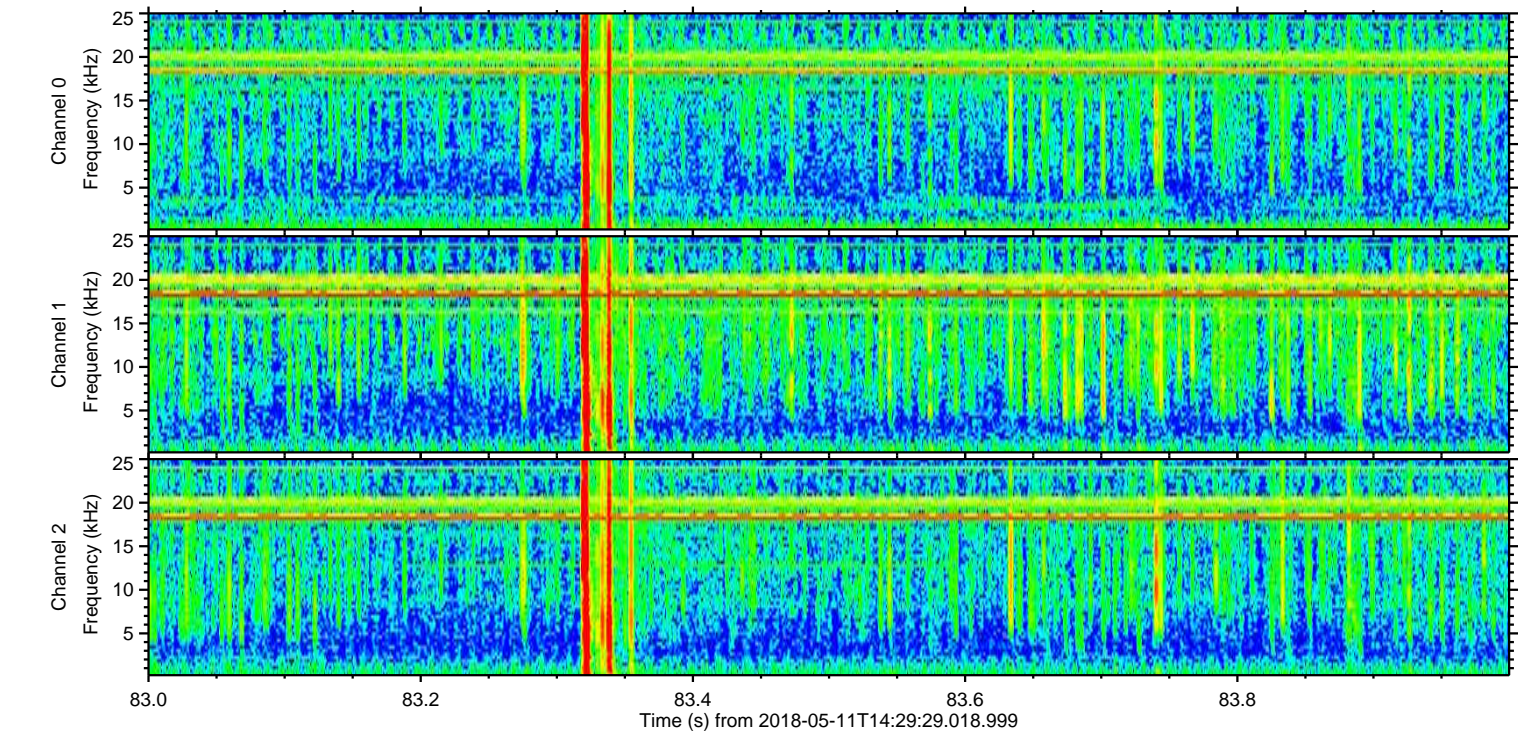
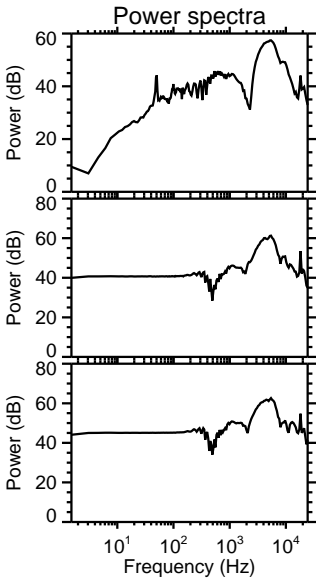
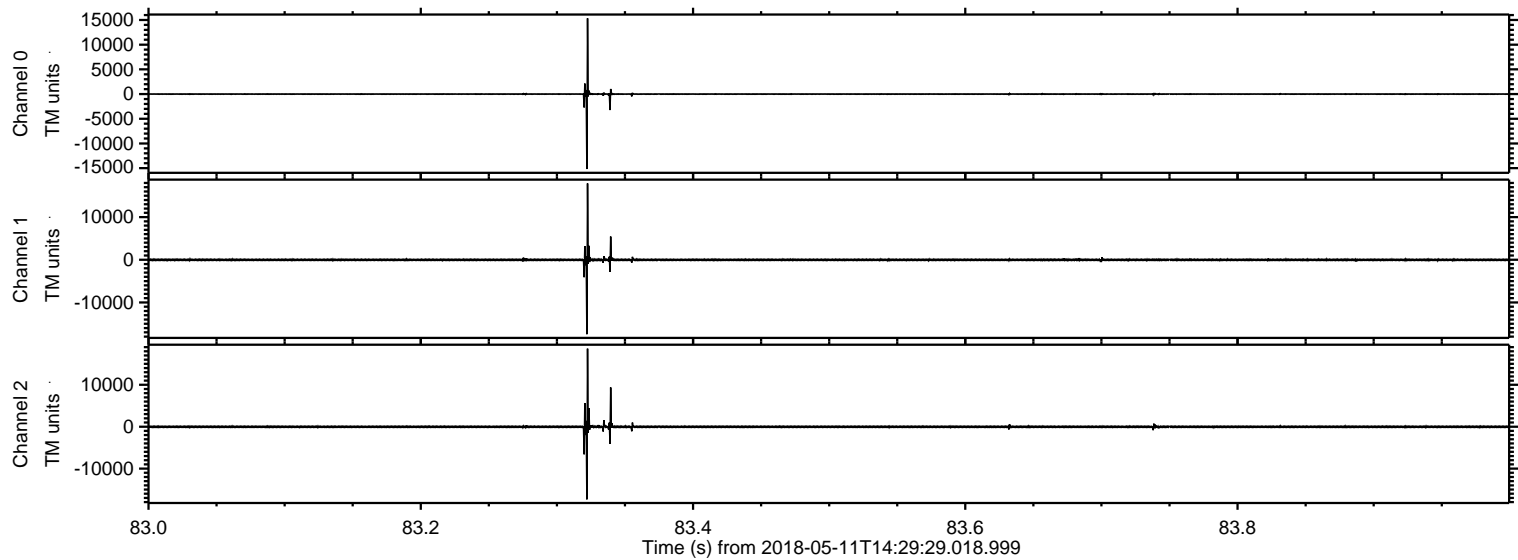
# ELMAVAN 3D WAVEFORMS (Measured data sampled at 50 kHz) 51000 packets of 144 samples from 2018-05-11T14:29:29.018.999.

Processed Fri May 11 16:37:38 2018 by ELM ver.2012-10-06 from 001\_\_elm20180511\_142928\_\_dat00.bin



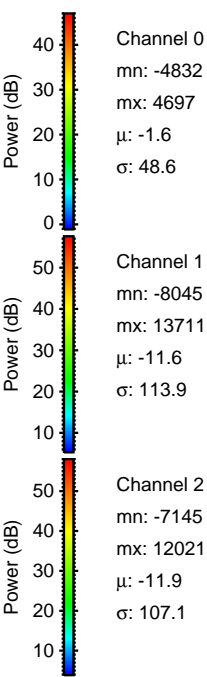
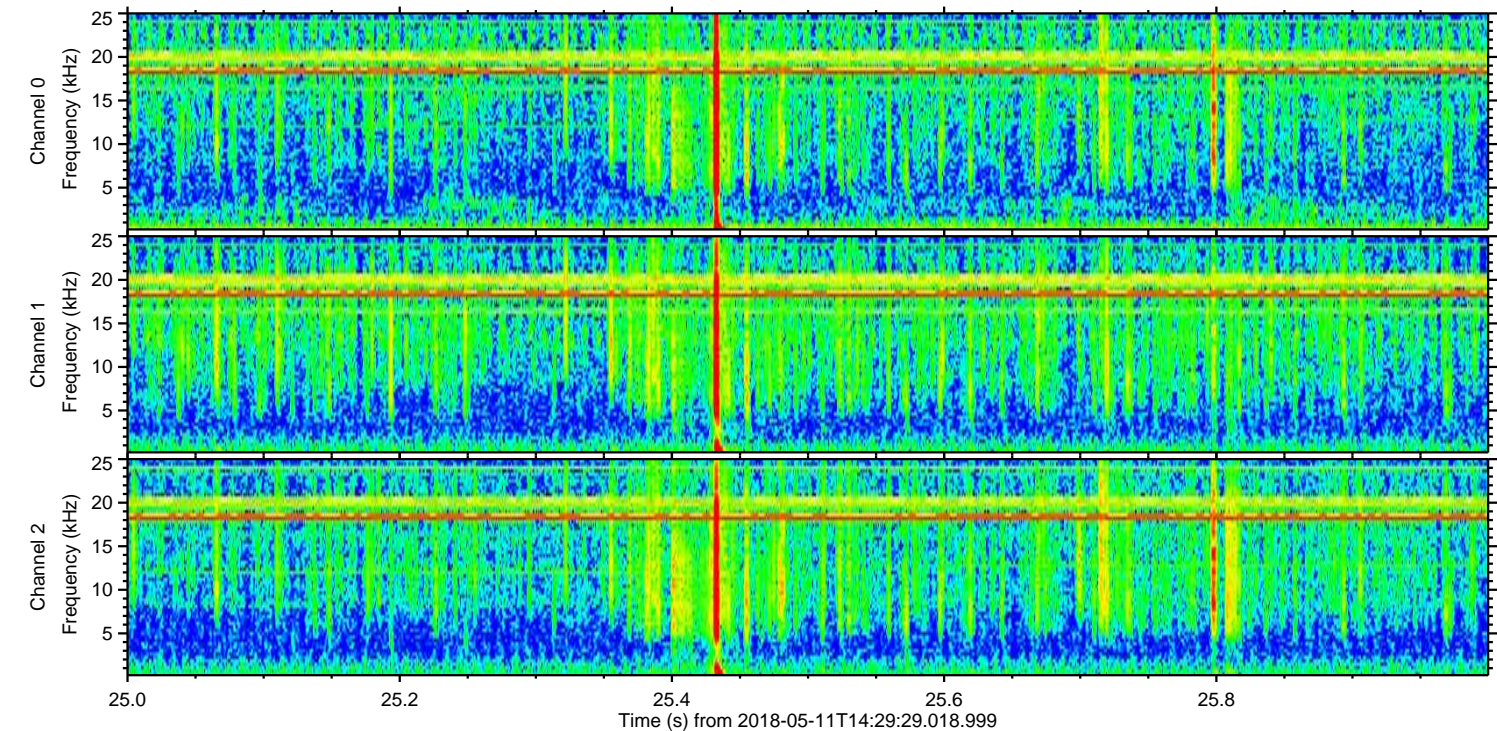
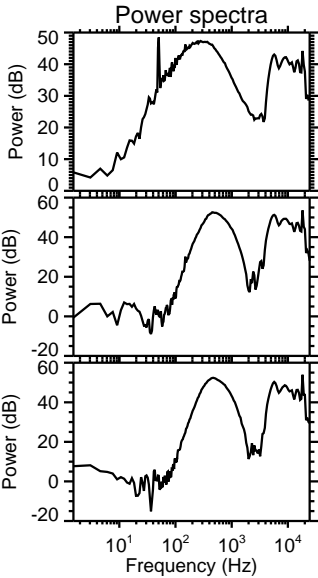
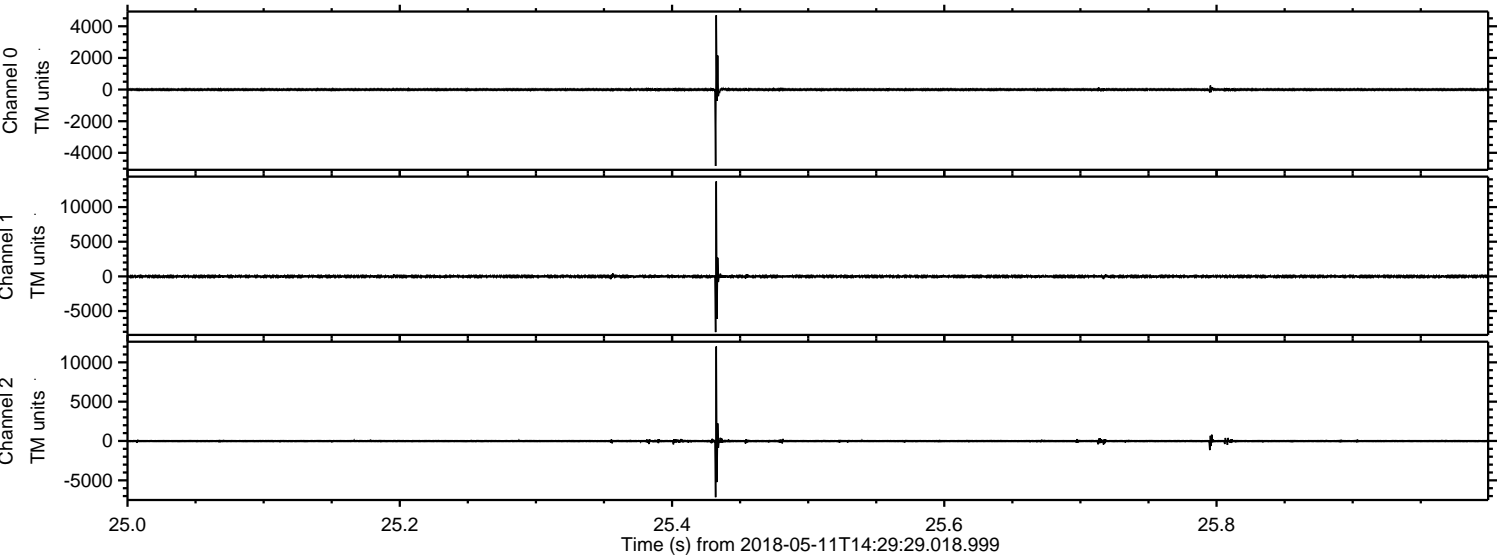


Processed Fri May 11 16:37:44 2018 by ELM ver.2012-10-06 from 001\_\_elm20180511\_142928\_\_dat00.bin



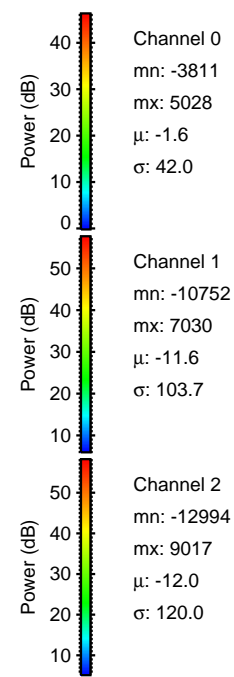
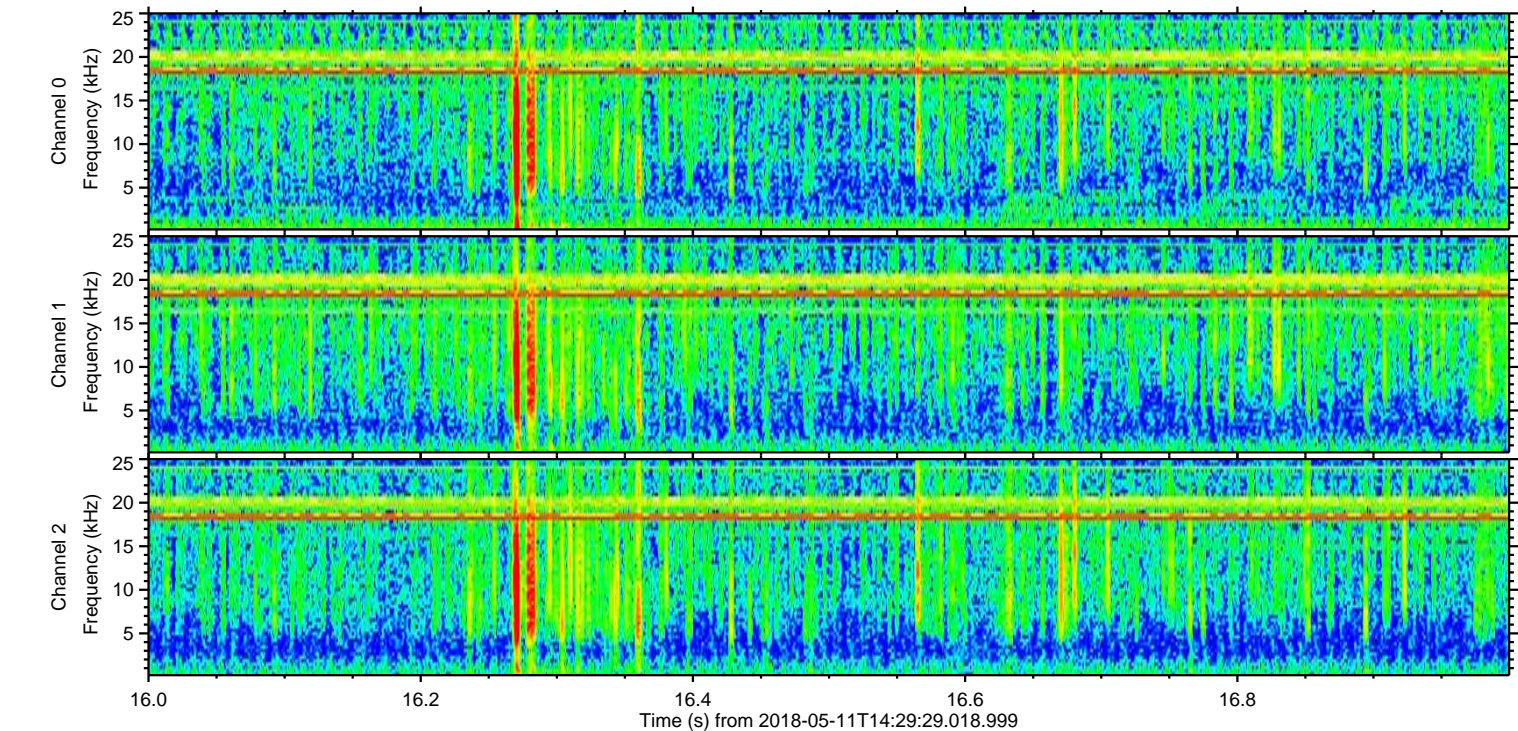
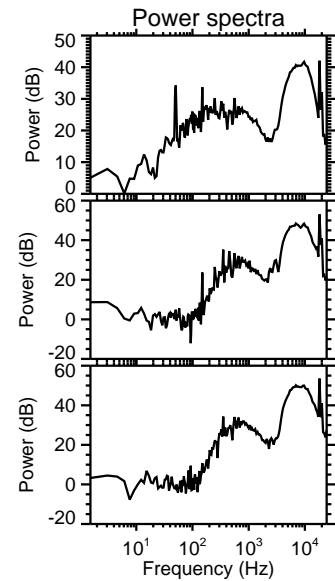
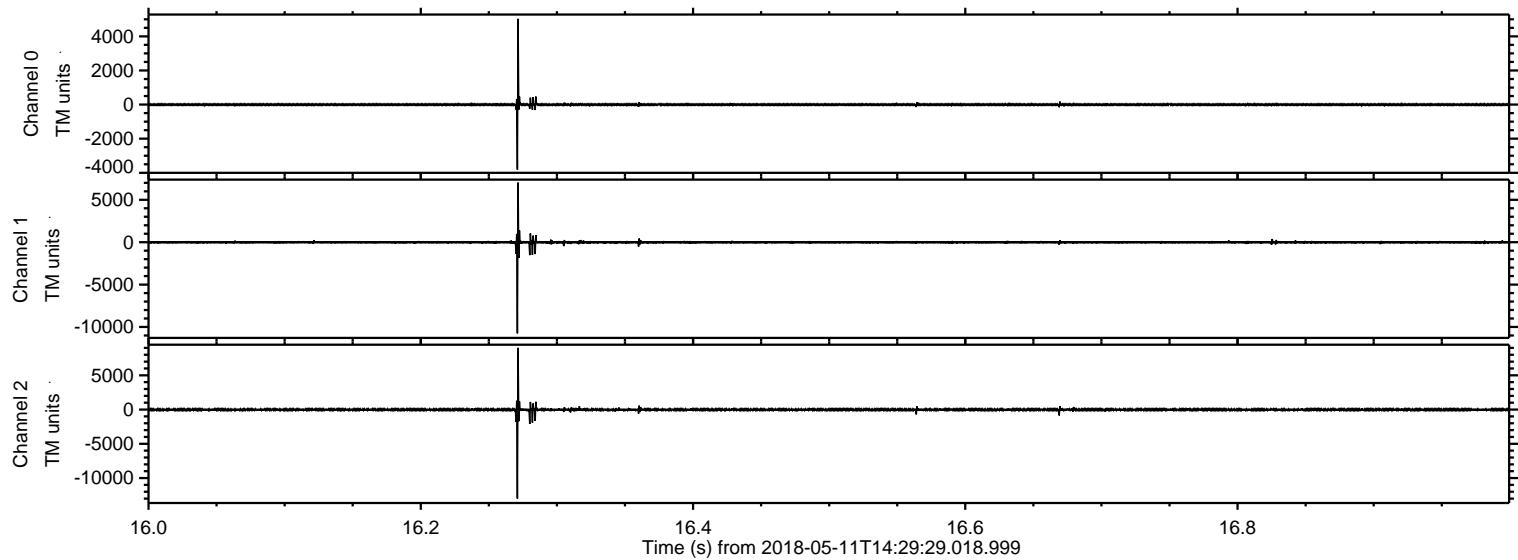


Processed Fri May 11 16:37:45 2018 by ELM ver.2012-10-06 from 001\_\_elm20180511\_142928\_\_dat00.bin



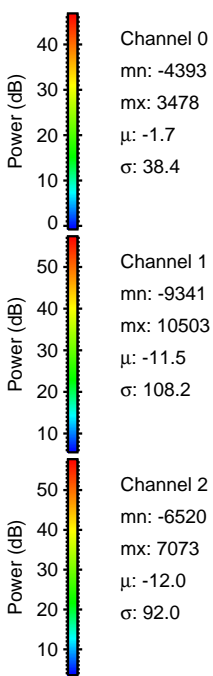
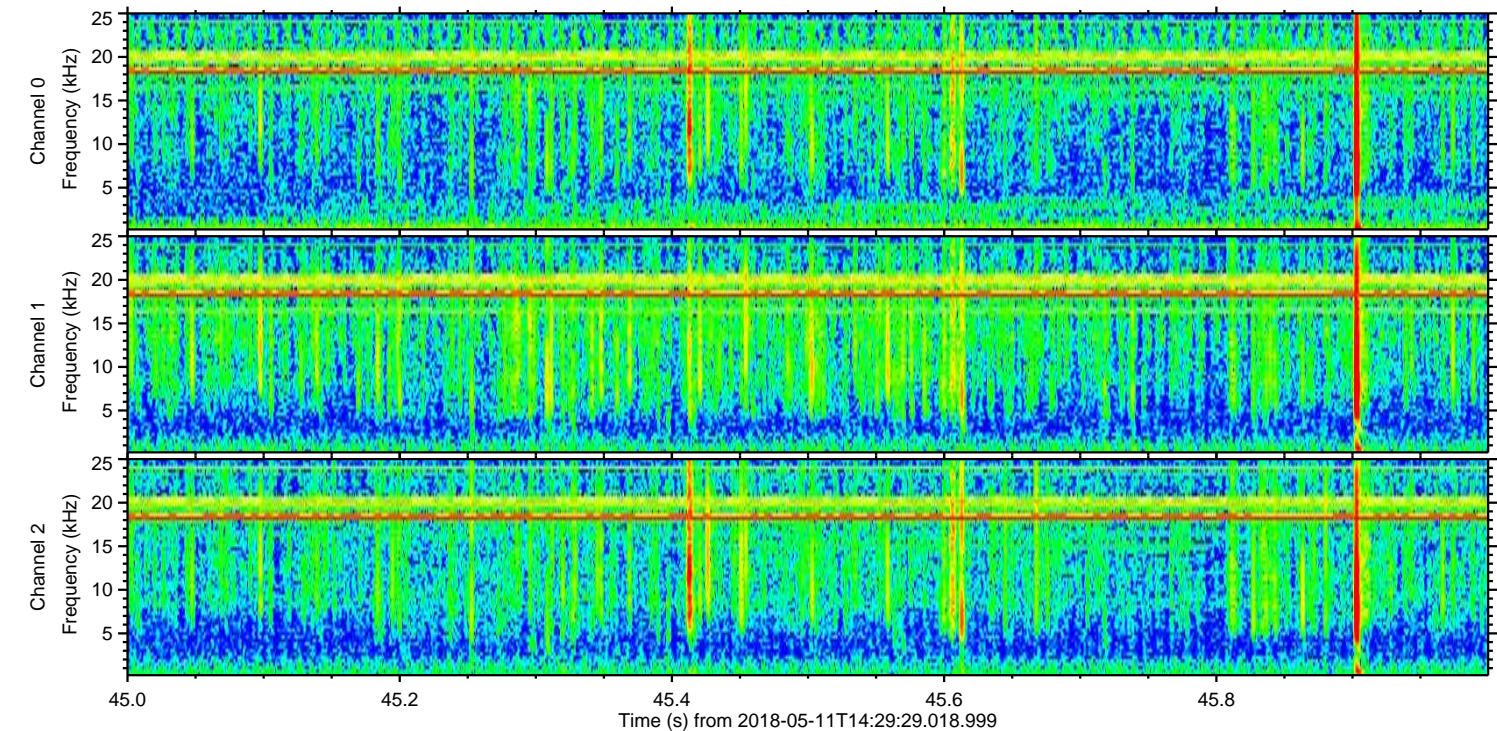
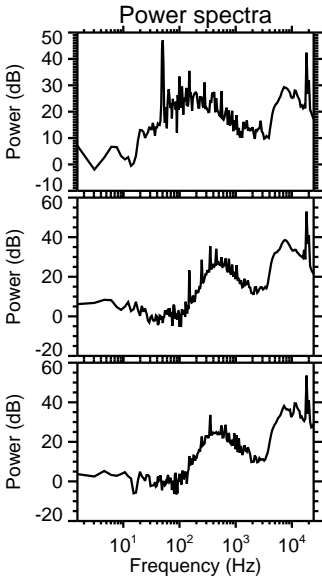
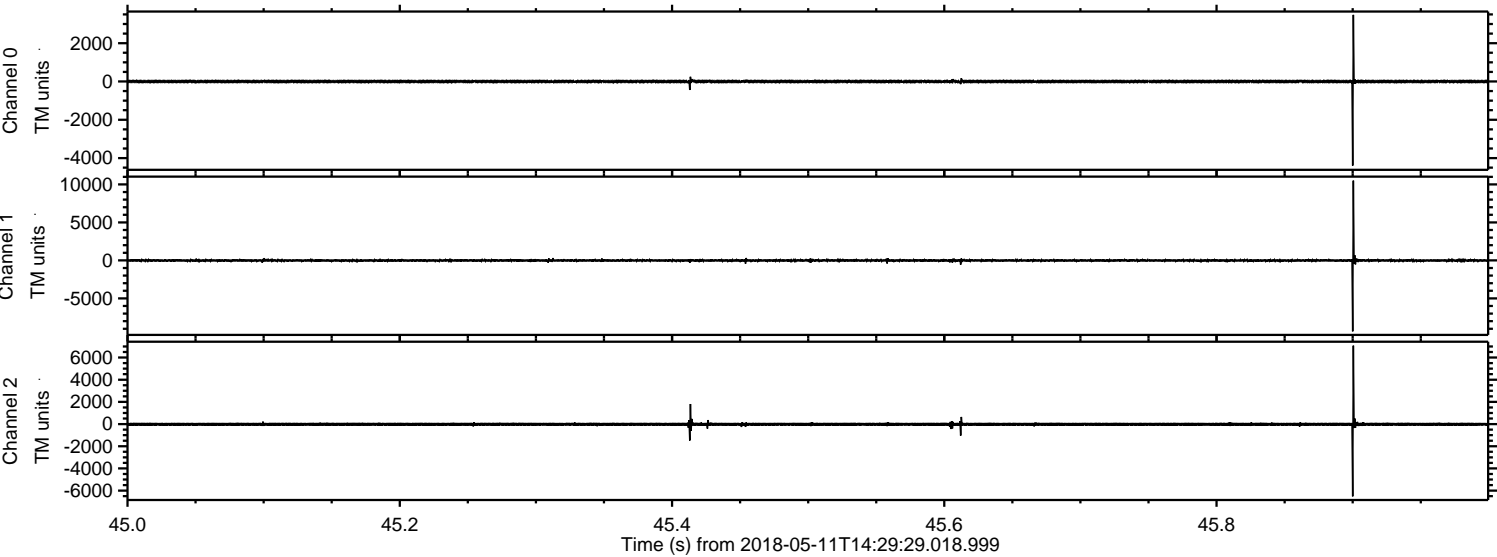


Processed Fri May 11 16:37:45 2018 by ELM ver.2012-10-06 from 001\_\_elm20180511\_142928\_\_dat00.bin





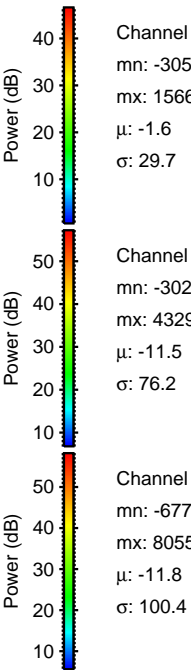
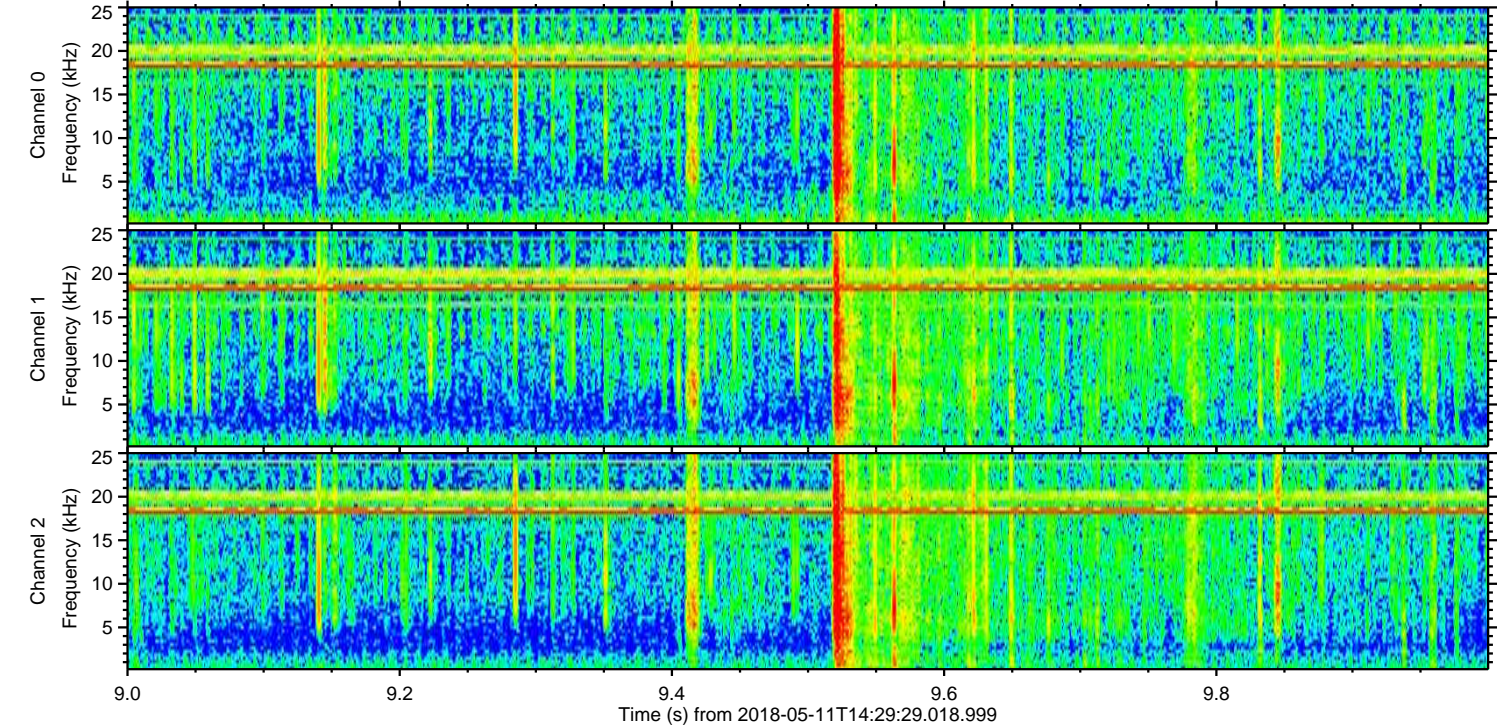
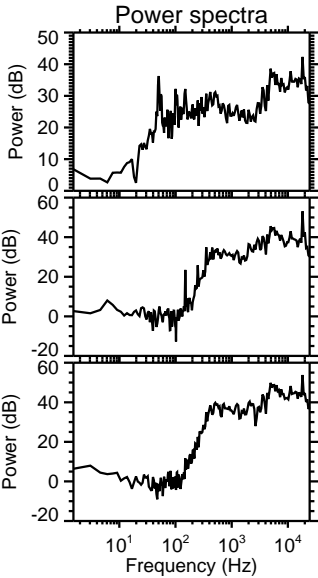
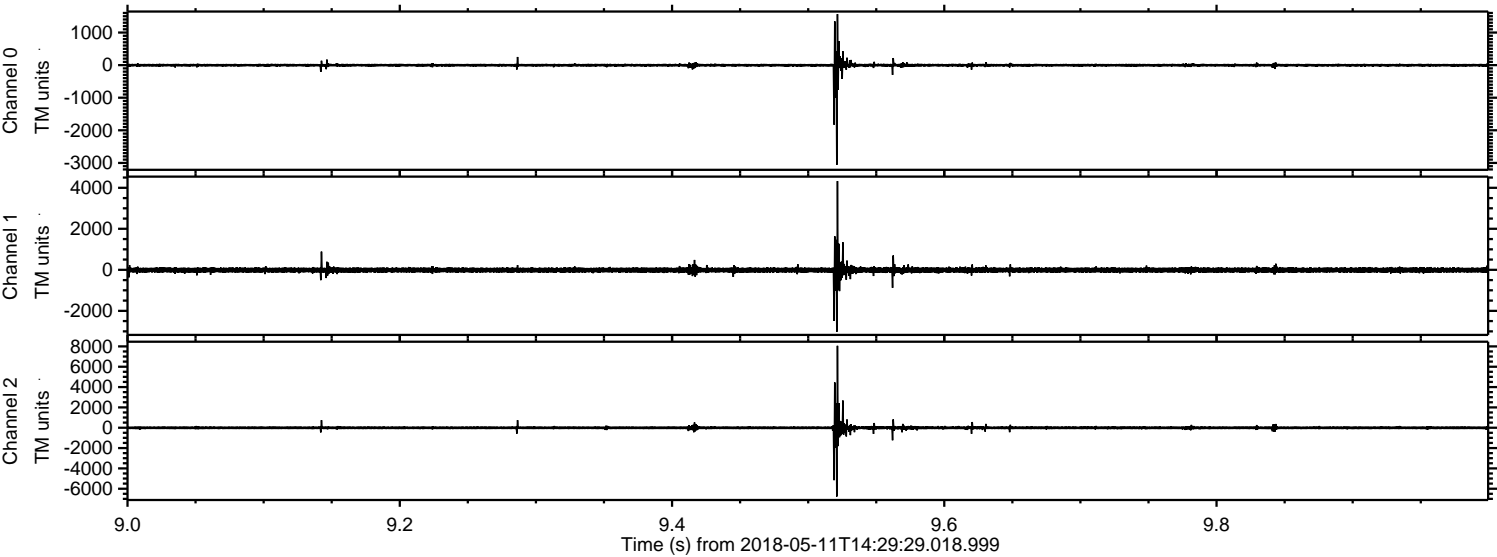
Processed Fri May 11 16:37:46 2018 by ELM ver.2012-10-06 from 001\_\_elm20180511\_142928\_\_dat00.bin





ELMAVAN 3D WAVEFORMS (Measured data sampled at 50 kHz) 51000 packets of 144 samples from 2018-05-11T14:29:29.018.999. Part 10/147

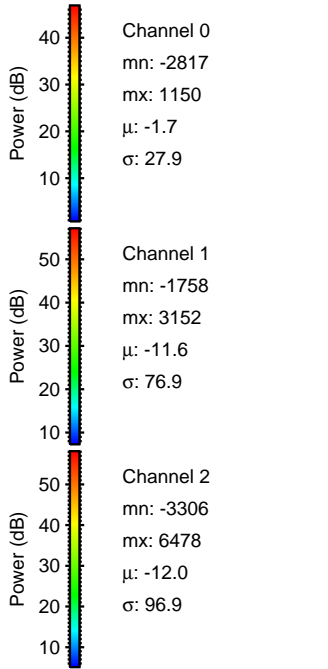
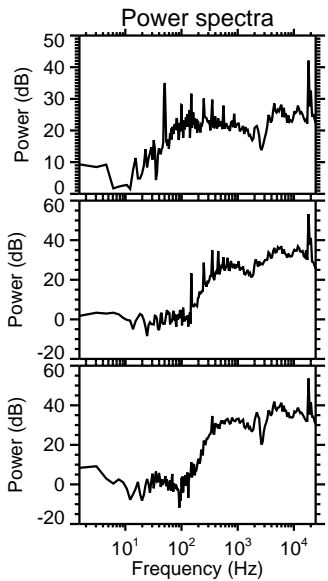
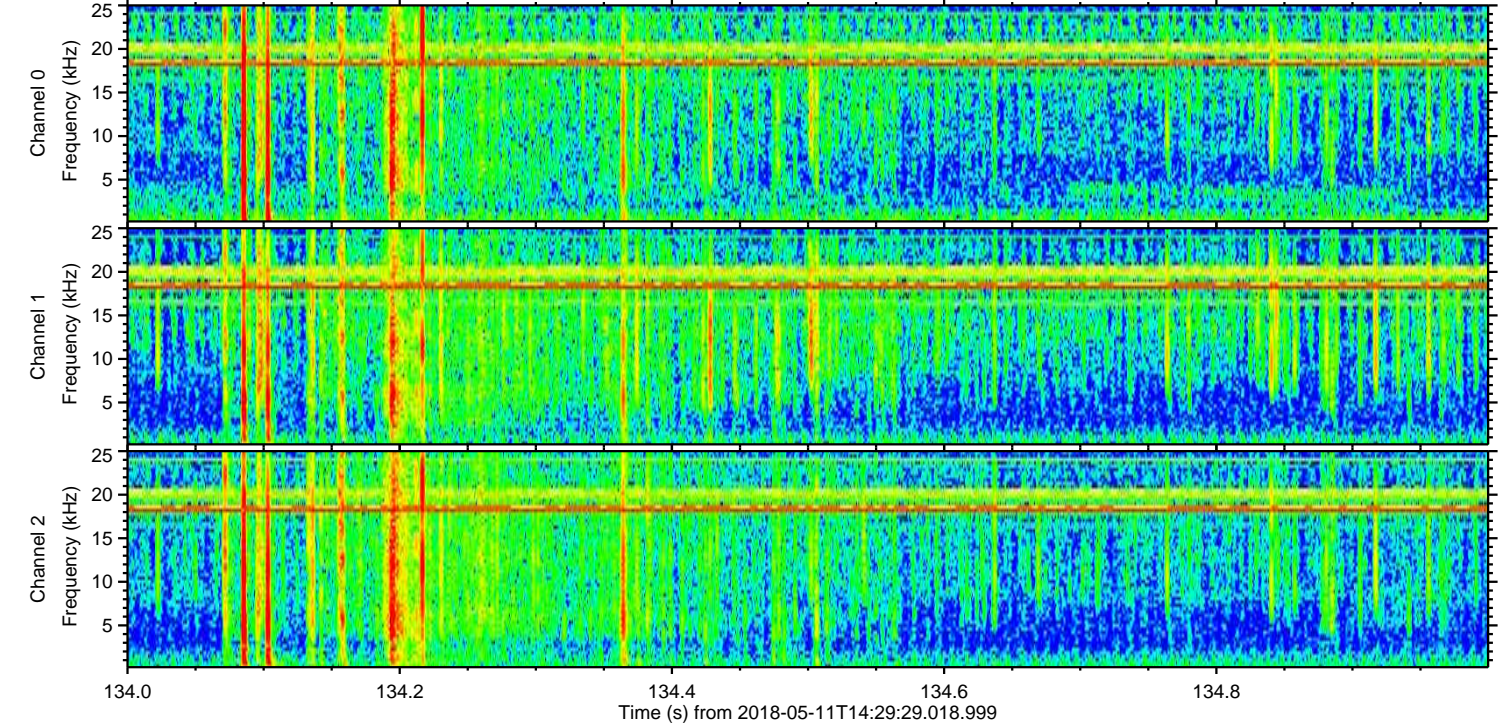
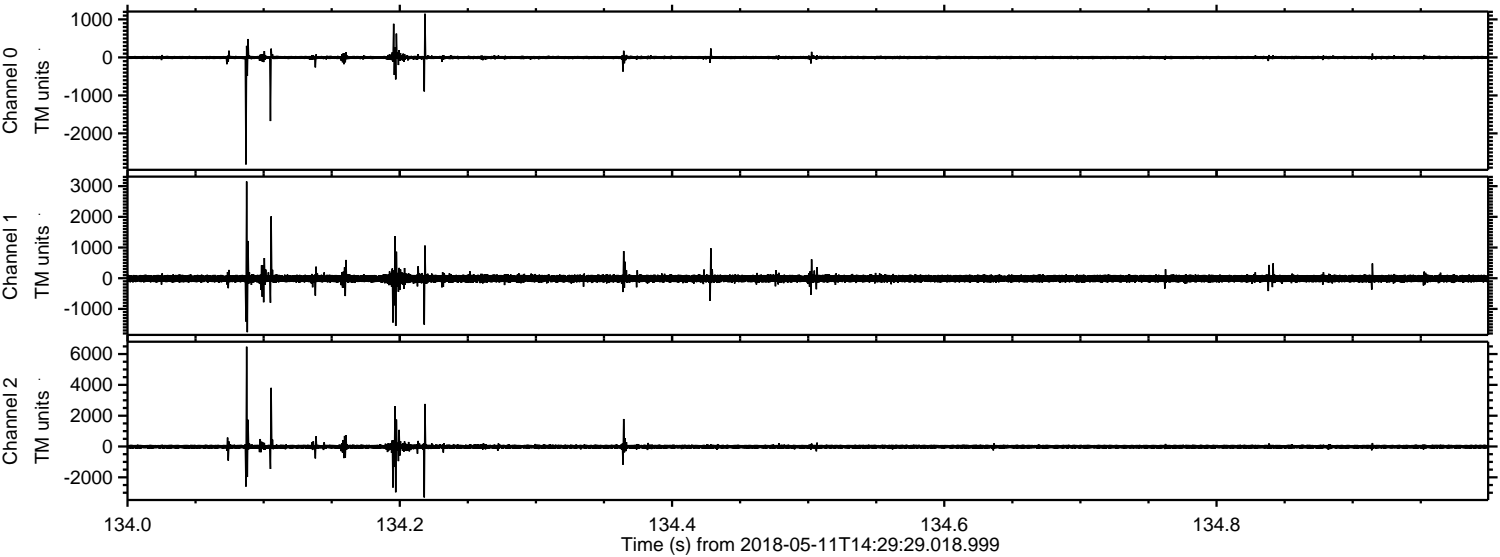
Processed Fri May 11 16:37:46 2018 by ELM ver.2012-10-06 from 001\_\_elm20180511\_142928\_\_dat00.bin





ELMAVAN 3D WAVEFORMS (Measured data sampled at 50 kHz) 51000 packets of 144 samples from 2018-05-11T14:29:29.018.999. Part 135/147

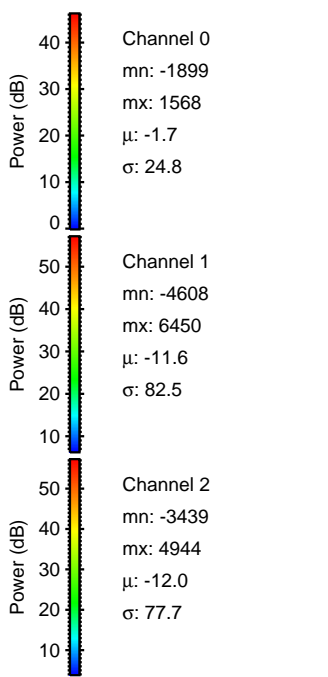
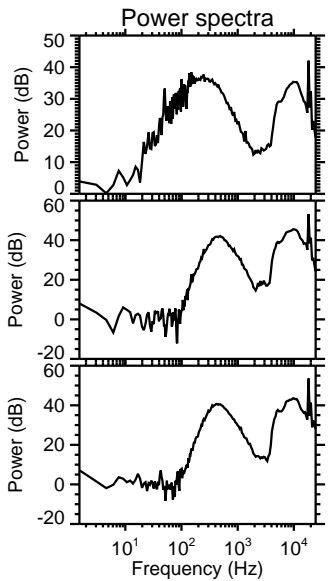
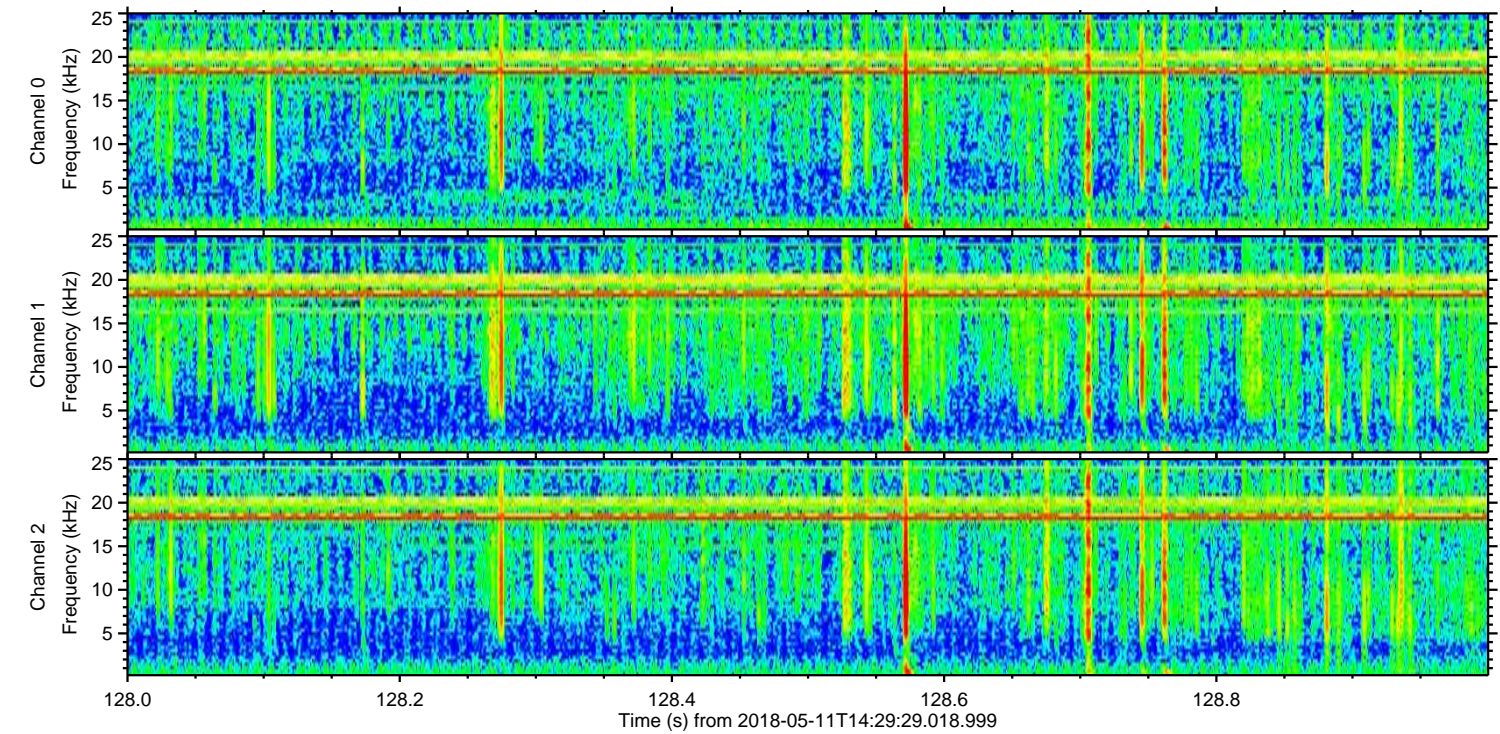
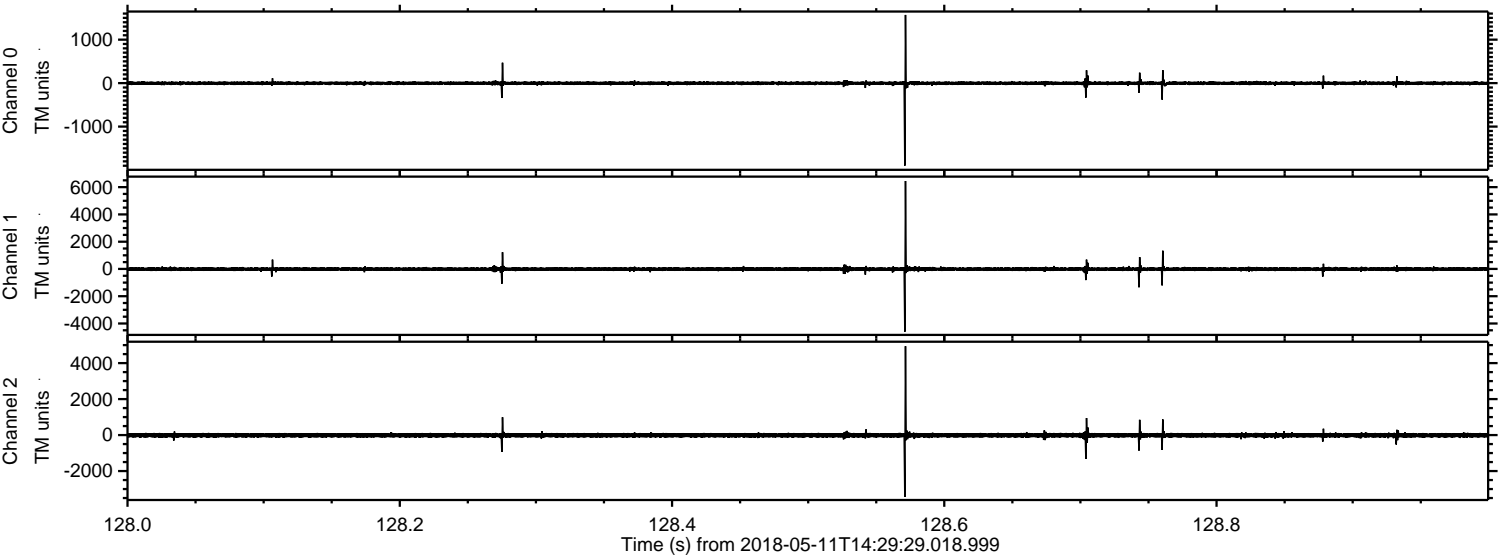
Processed Fri May 11 16:37:47 2018 by ELM ver.2012-10-06 from 001\_\_elm20180511\_142928\_\_dat00.bin





ELMAVAN 3D WAVEFORMS (Measured data sampled at 50 kHz) 51000 packets of 144 samples from 2018-05-11T14:29:29.018.999. Part 129/147

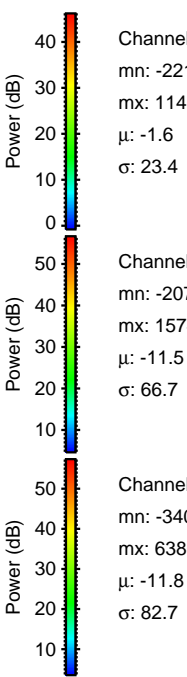
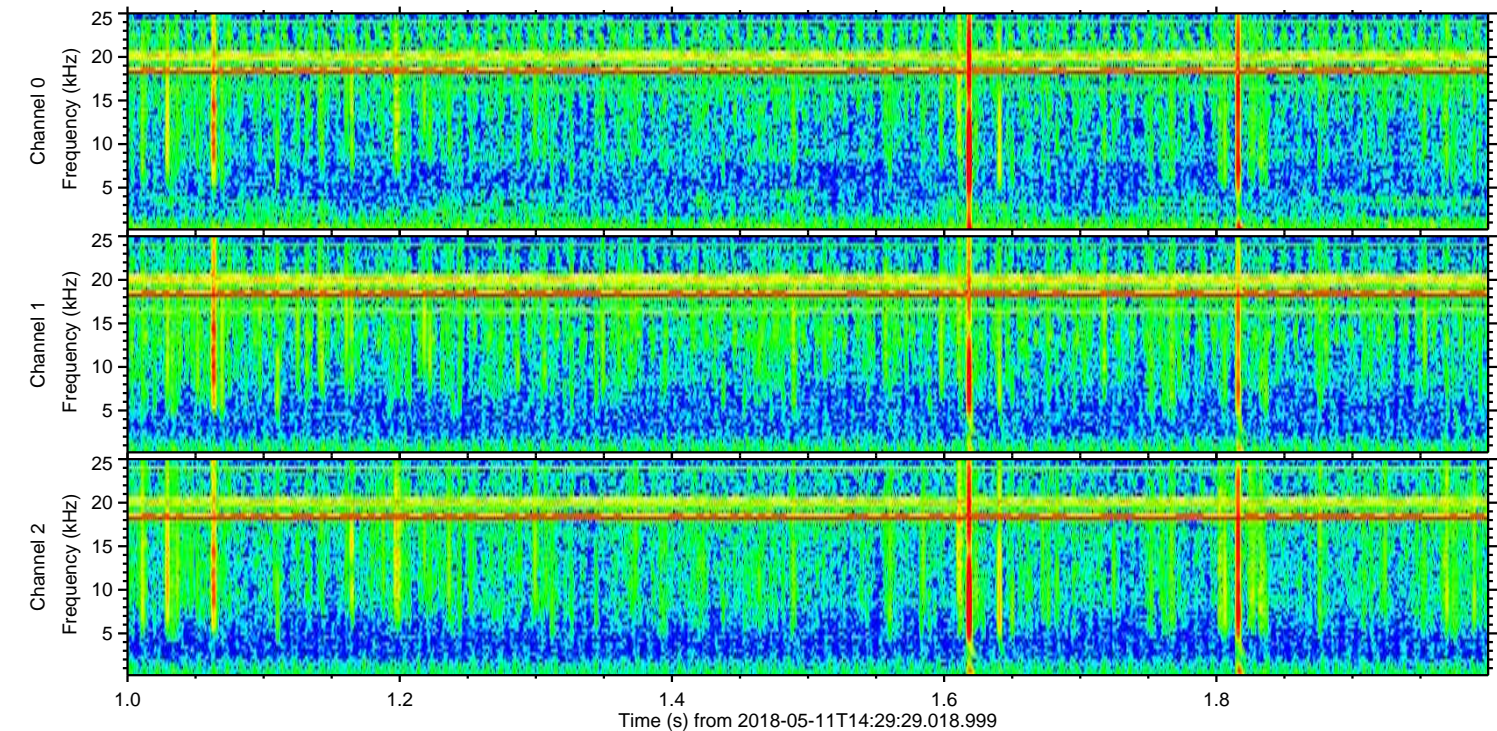
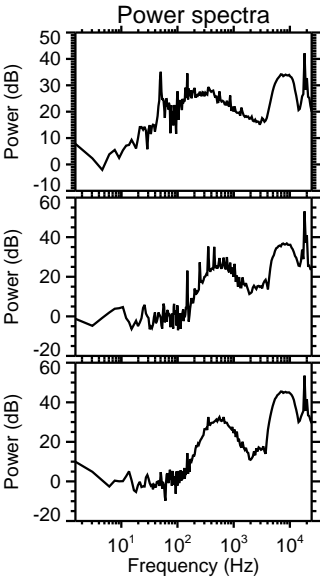
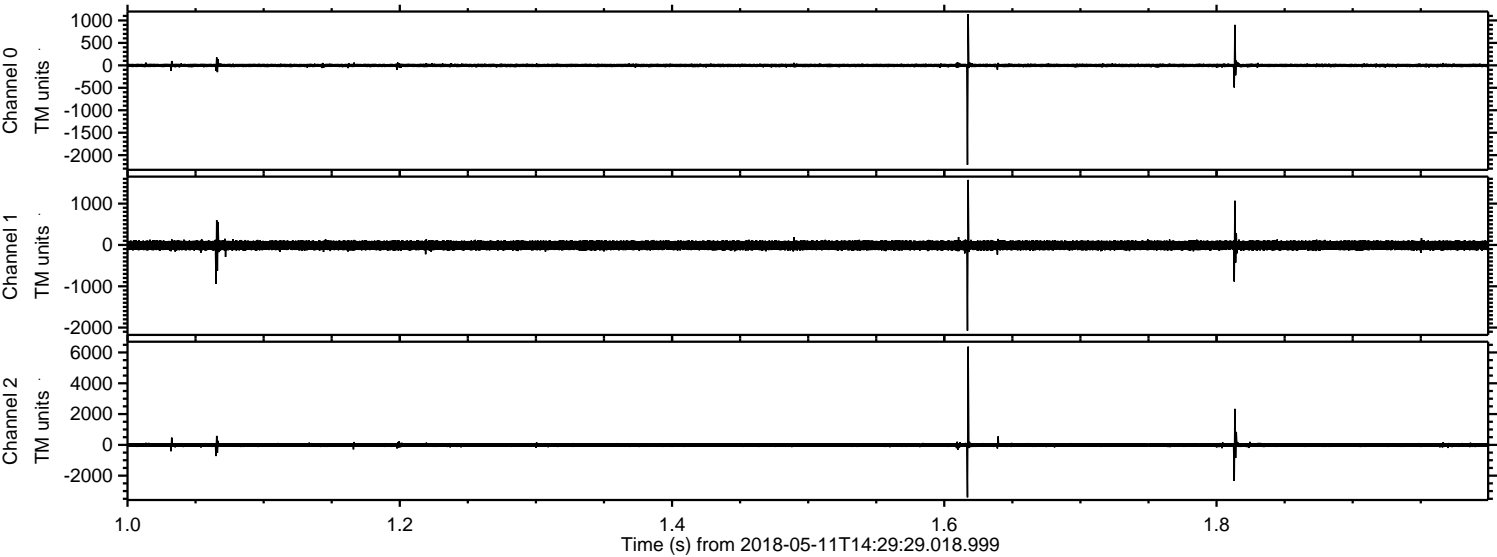
Processed Fri May 11 16:37:48 2018 by ELM ver.2012-10-06 from 001\_\_elm20180511\_142928\_\_dat00.bin





ELMAVAN 3D WAVEFORMS (Measured data sampled at 50 kHz) 51000 packets of 144 samples from 2018-05-11T14:29:29.018.999. Part 2/147

Processed Fri May 11 16:37:48 2018 by ELM ver.2012-10-06 from 001\_\_elm20180511\_142928\_\_dat00.bin



Channel 0  
mn: -2216  
mx: 1141  
 $\mu$ : -1.6  
 $\sigma$ : 23.4

Channel 1  
mn: -2073  
mx: 1574  
 $\mu$ : -11.5  
 $\sigma$ : 66.7

Channel 2  
mn: -3409  
mx: 6380  
 $\mu$ : -11.8  
 $\sigma$ : 82.7



Processed Fri May 11 16:37:49 2018 by ELM ver.2012-10-06 from 001\_\_elm20180511\_142928\_\_dat00.bin

