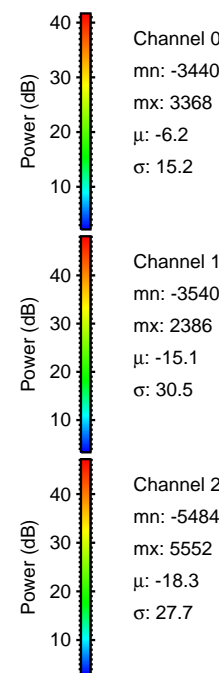
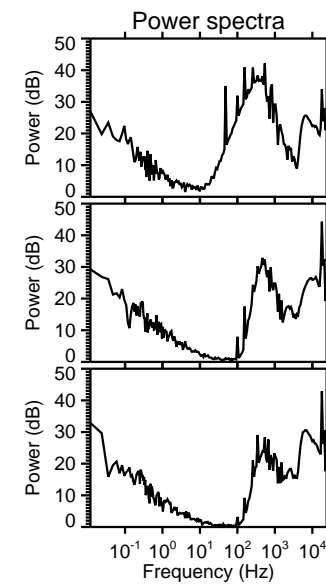
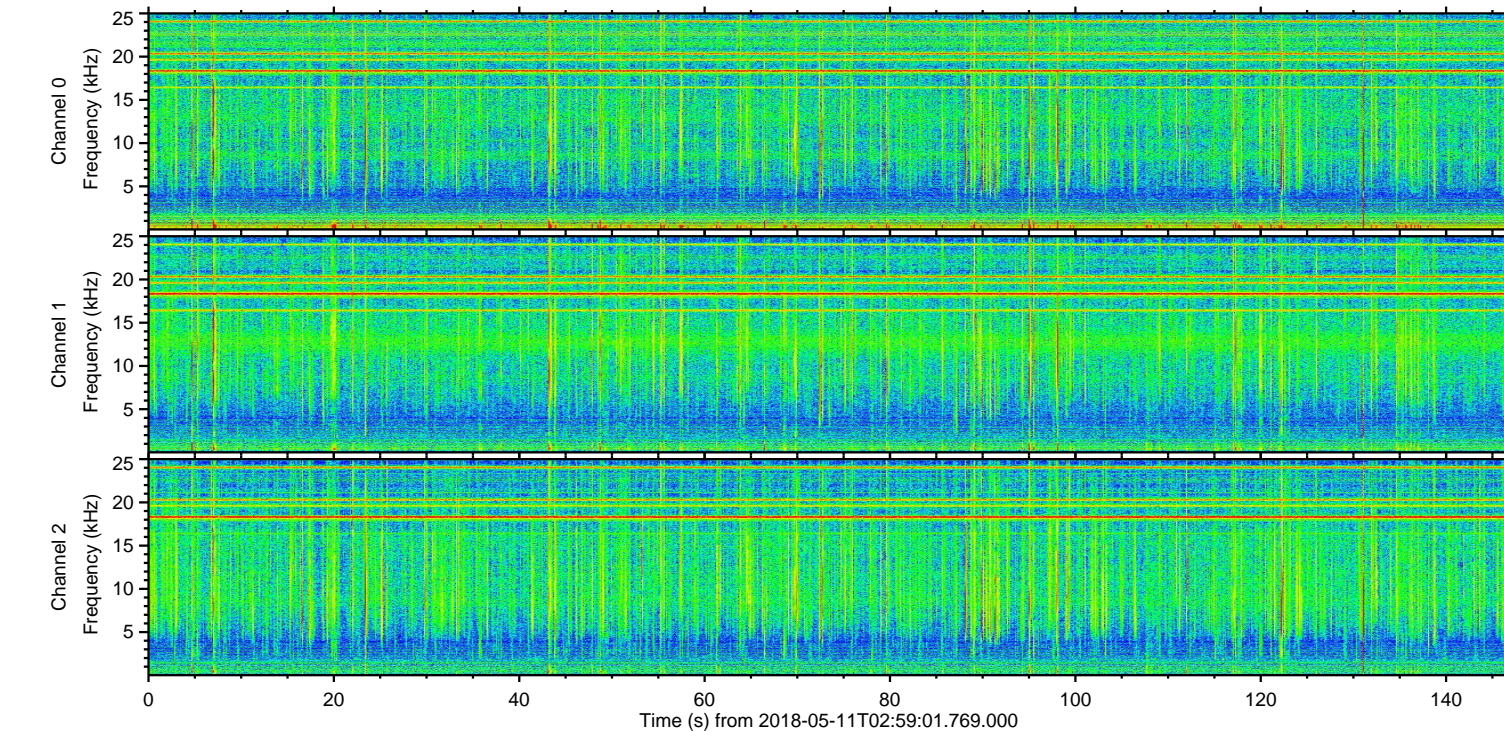
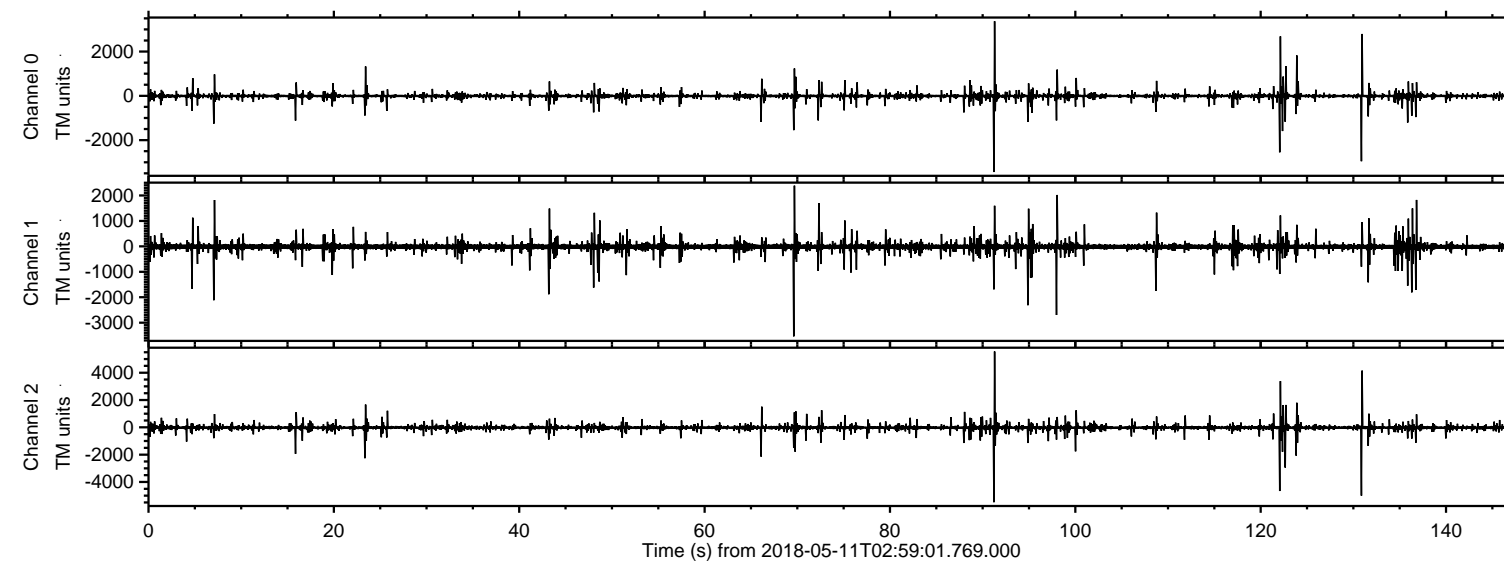
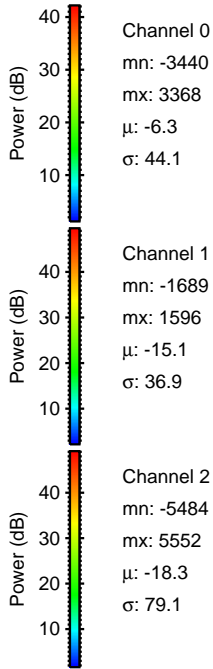
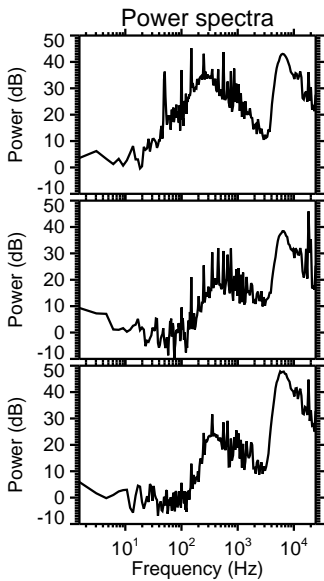
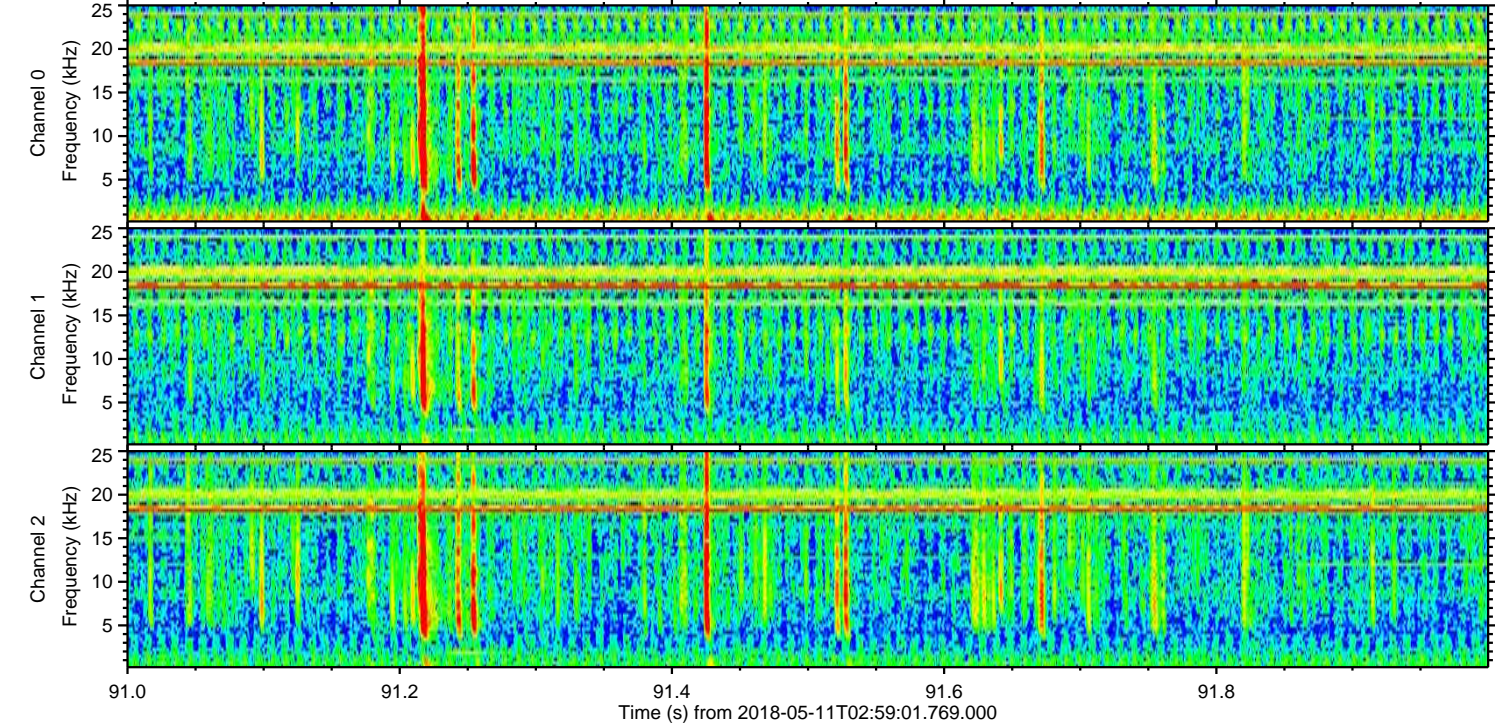
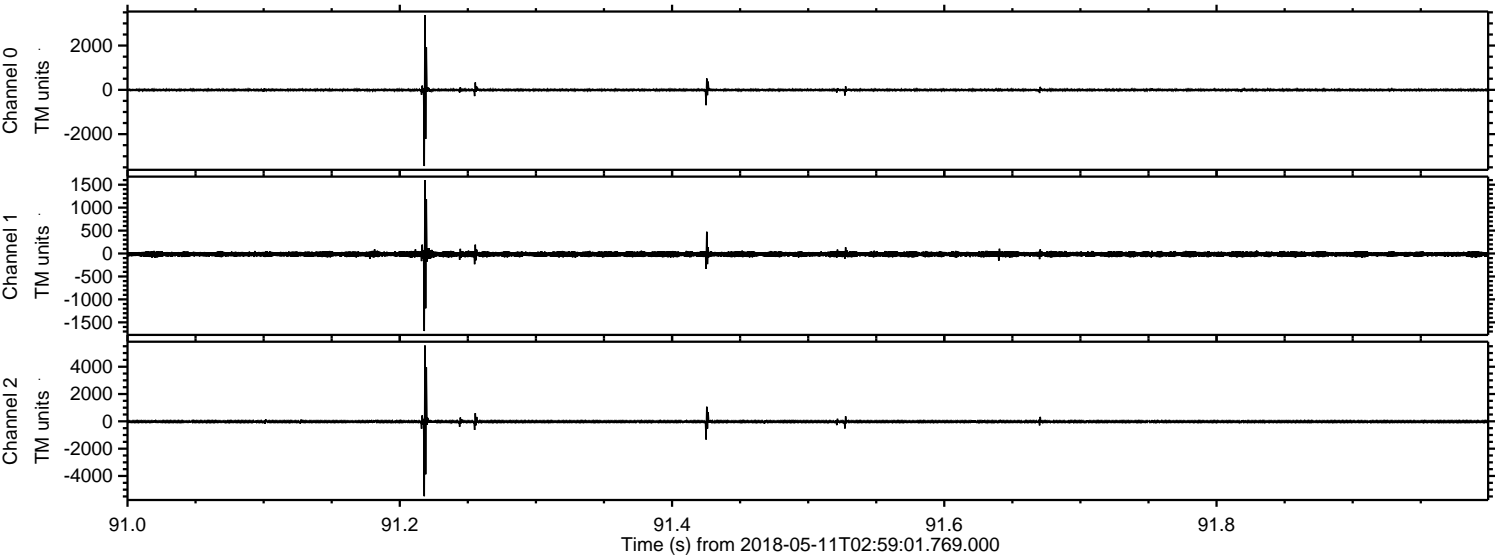


ELMAVAN 3D WAVEFORMS (Measured data sampled at 50 kHz) 51000 packets of 144 samples from 2018-05-11T02:59:01.769.000.

Processed Fri May 11 09:31:57 2018 by ELM ver.2012-10-06 from 001__elm20180511_025900__dat00.bin

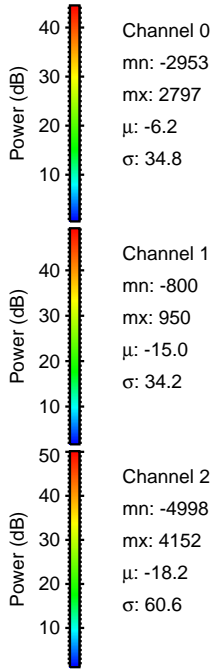
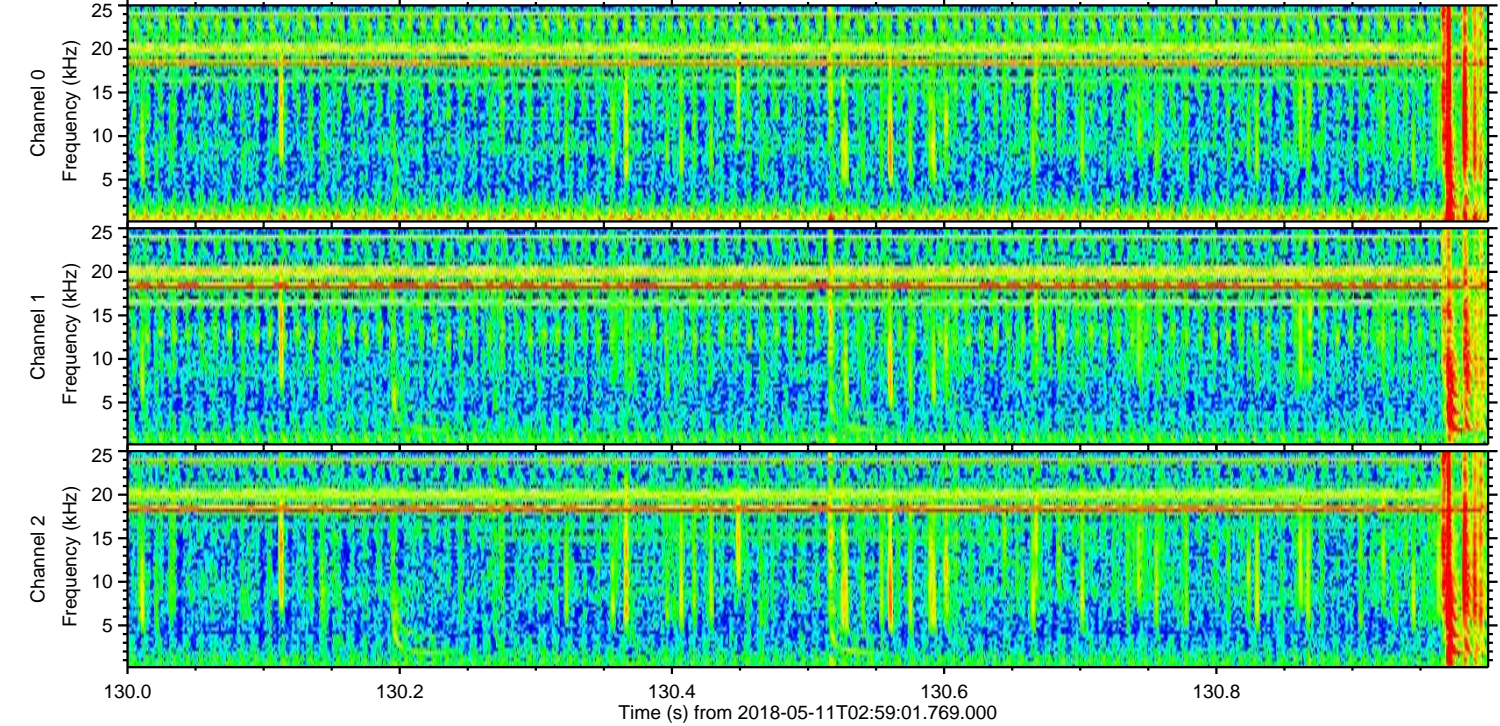
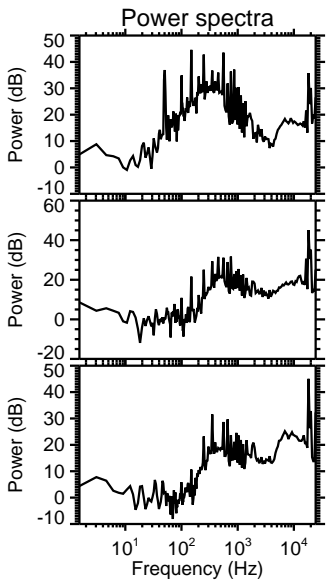
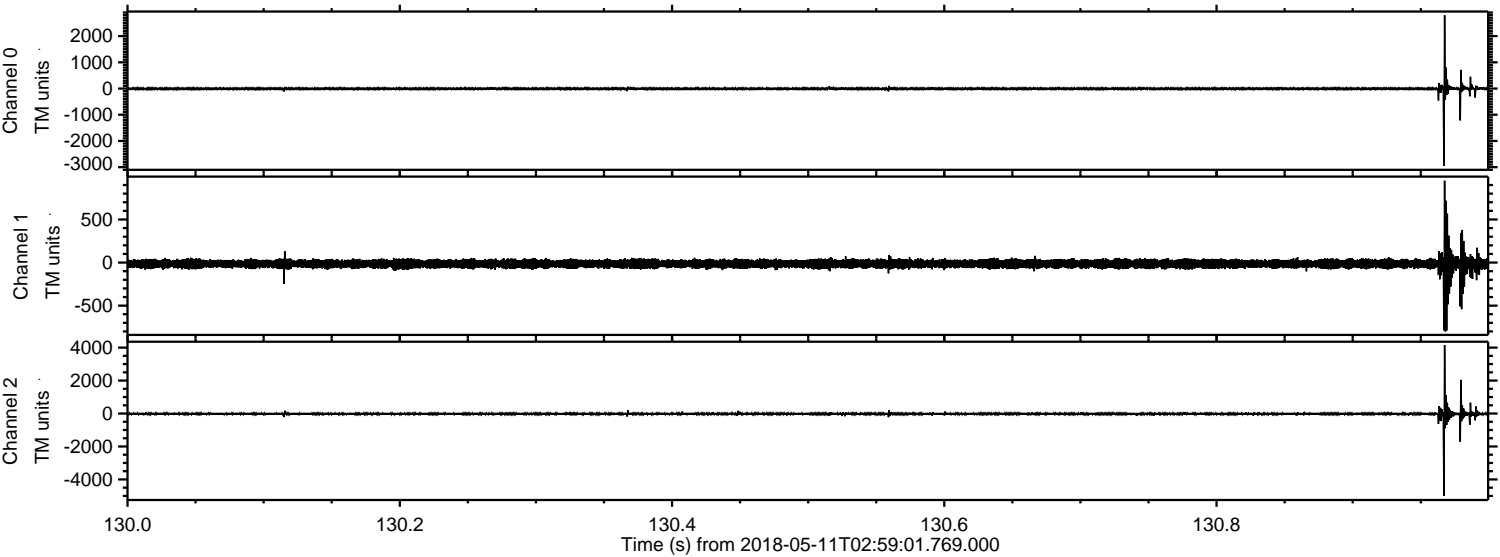


Processed Fri May 11 09:32:06 2018 by ELM ver.2012-10-06 from 001__elm20180511_025900__dat00.bin



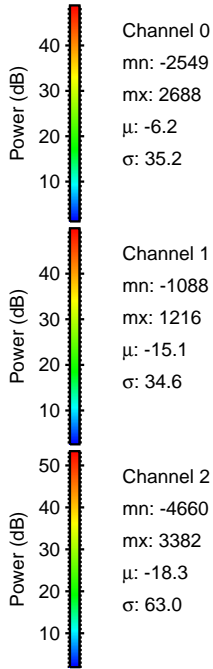
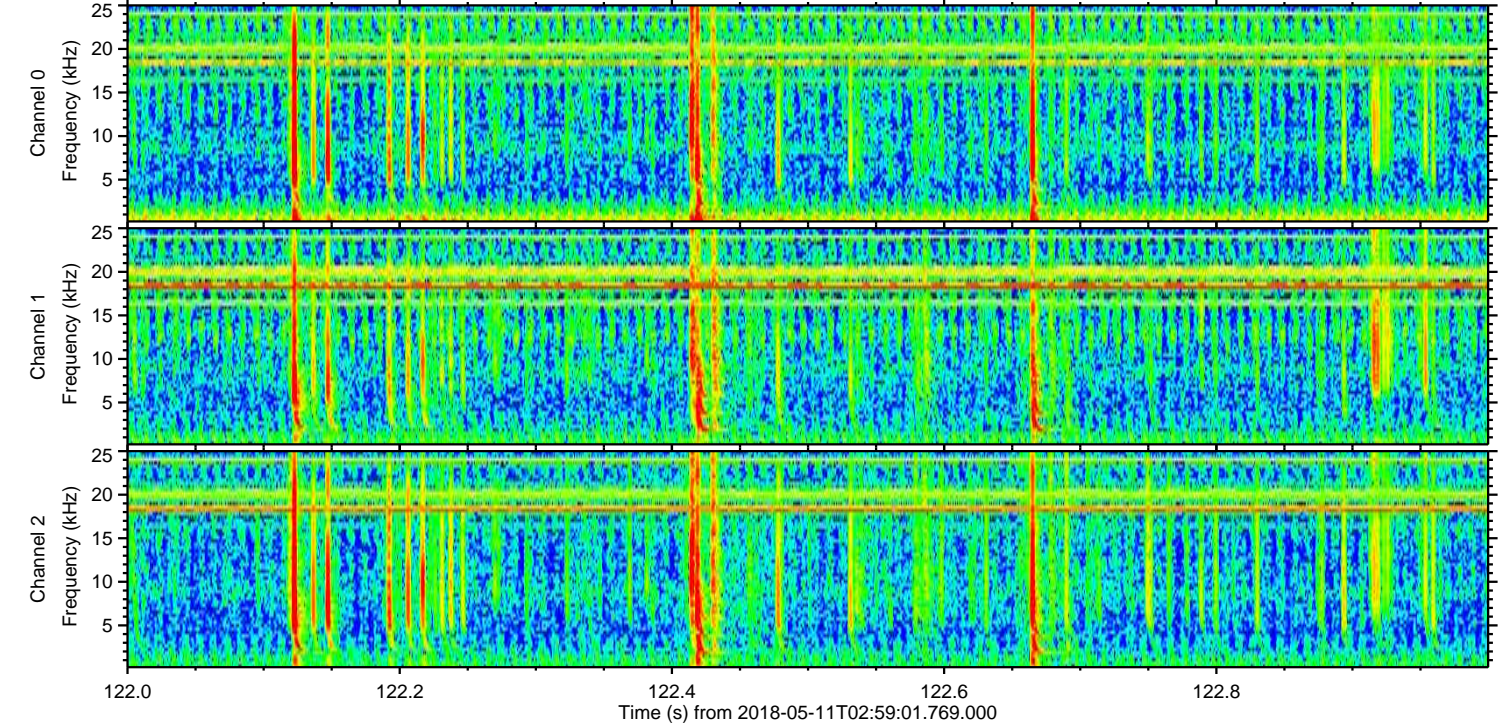
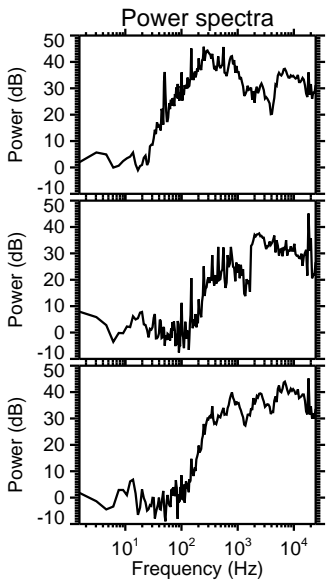
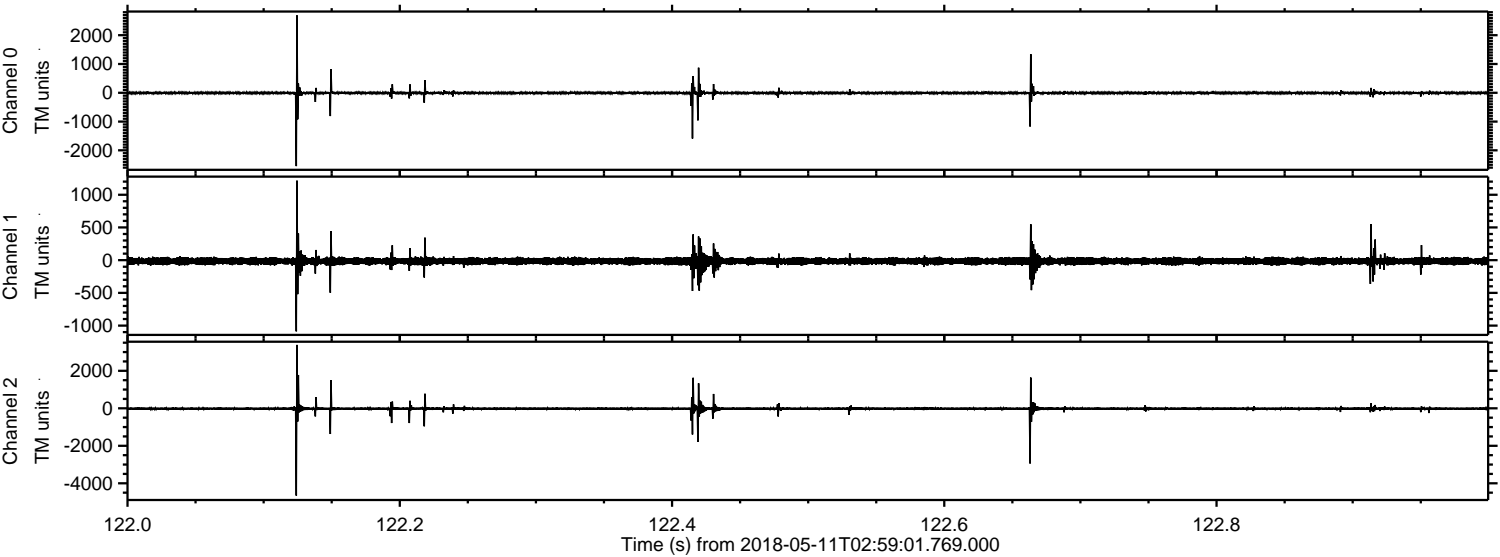
ELMAVAN 3D WAVEFORMS (Measured data sampled at 50 kHz) 51000 packets of 144 samples from 2018-05-11T02:59:01.769.000. Part 131/147

Processed Fri May 11 09:32:07 2018 by ELM ver.2012-10-06 from 001__elm20180511_025900__dat00.bin



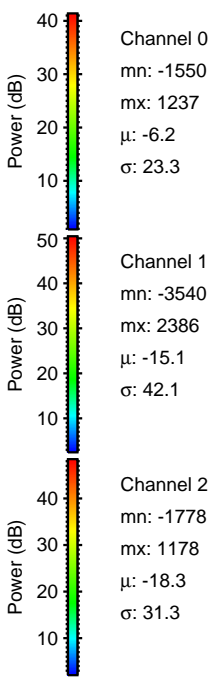
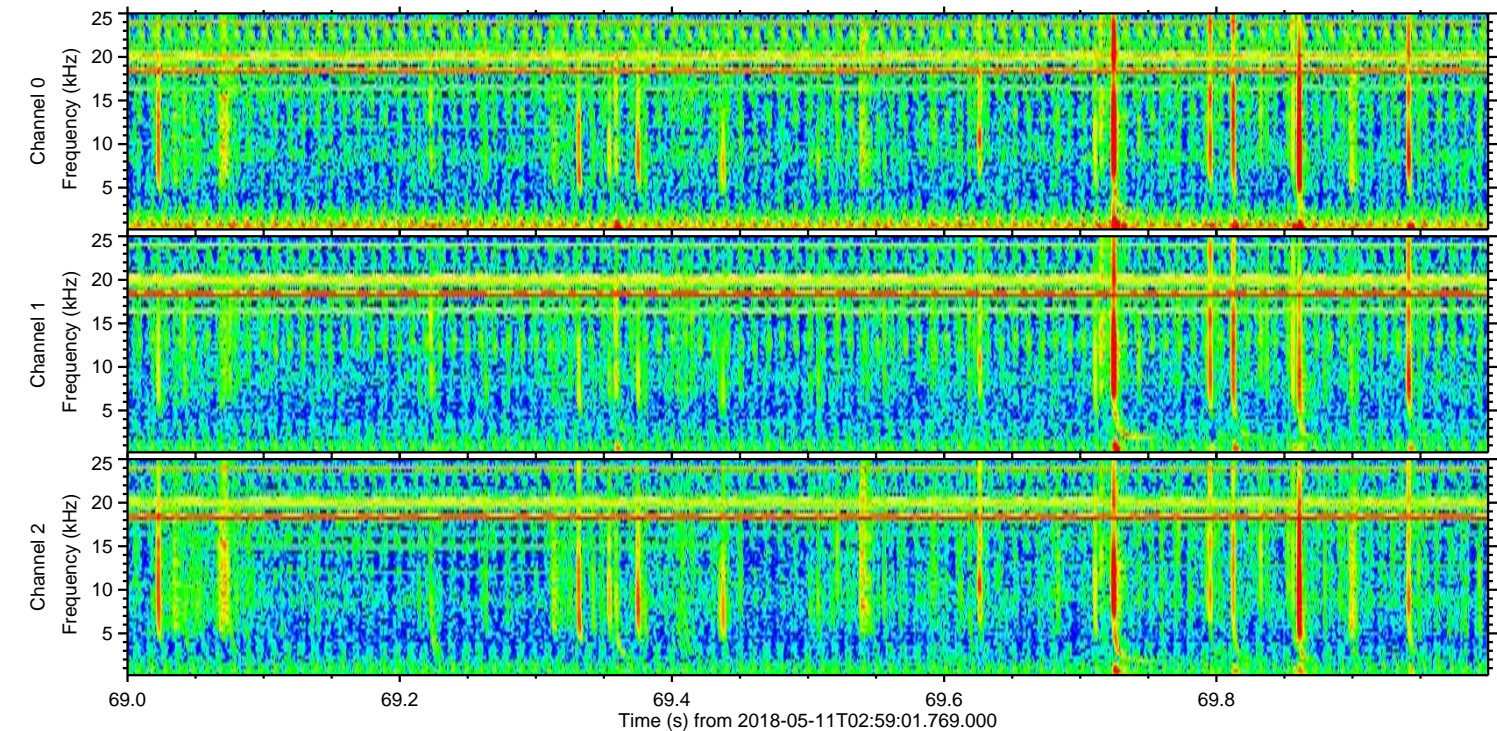
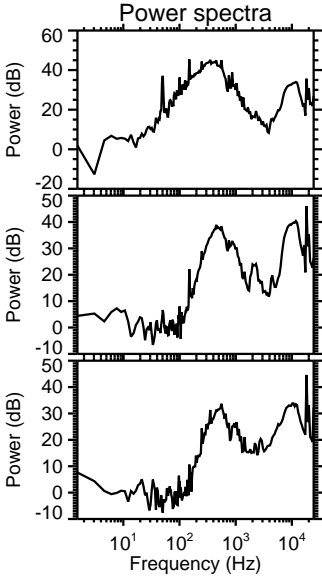
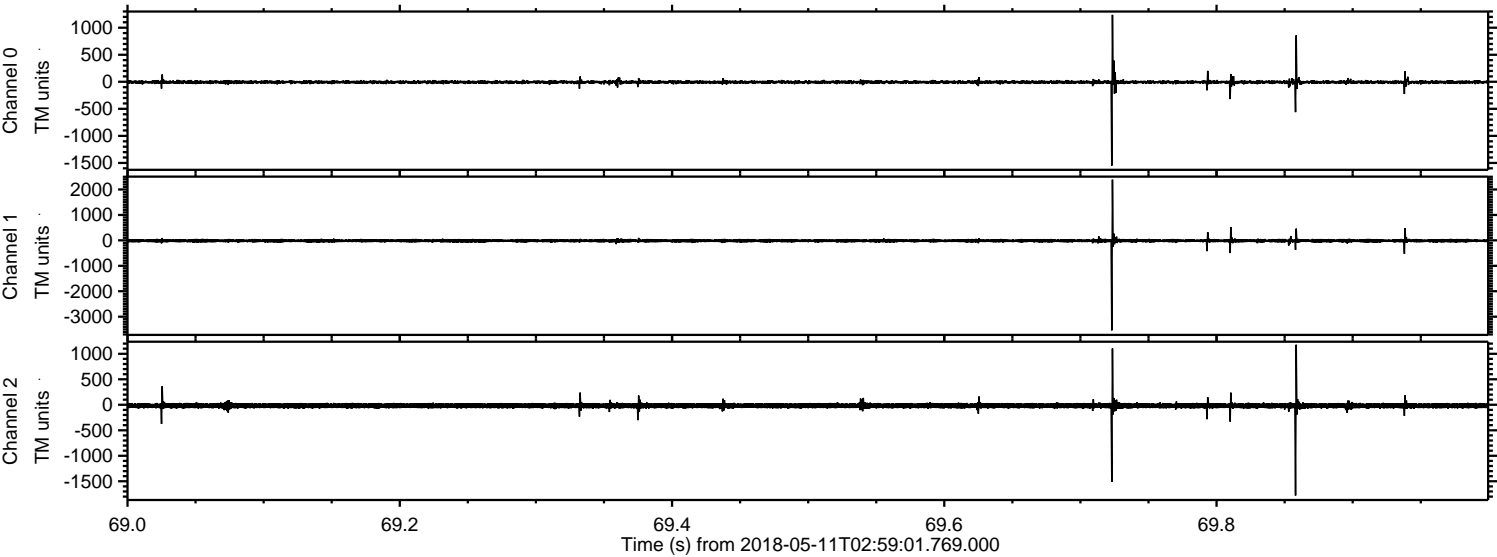
ELMAVAN 3D WAVEFORMS (Measured data sampled at 50 kHz) 51000 packets of 144 samples from 2018-05-11T02:59:01.769.000. Part 123/147

Processed Fri May 11 09:32:08 2018 by ELM ver.2012-10-06 from 001__elm20180511_025900__dat00.bin

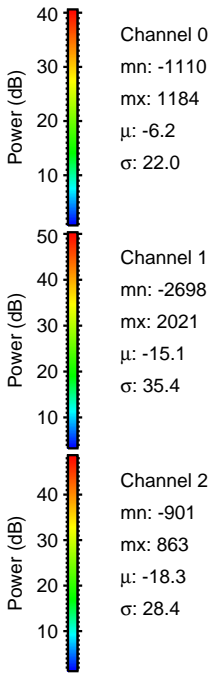
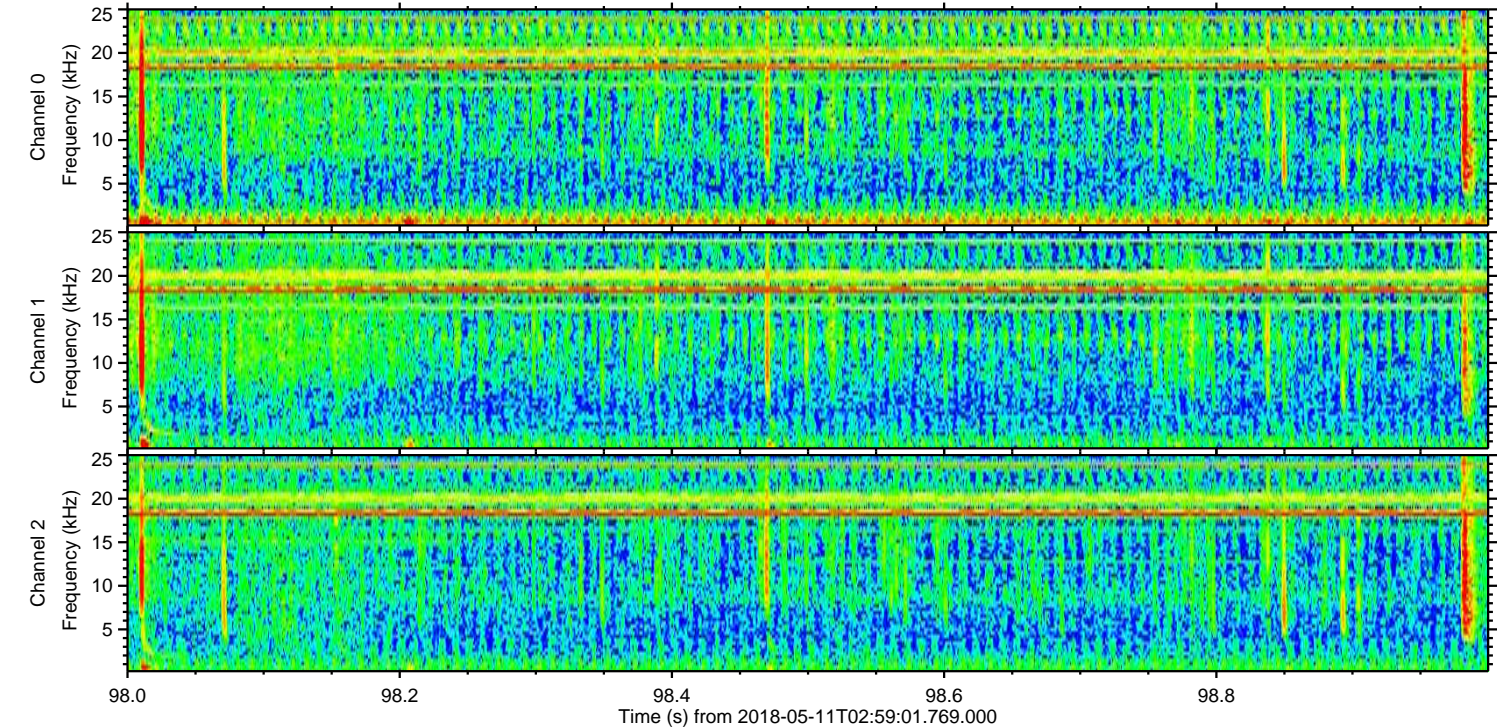
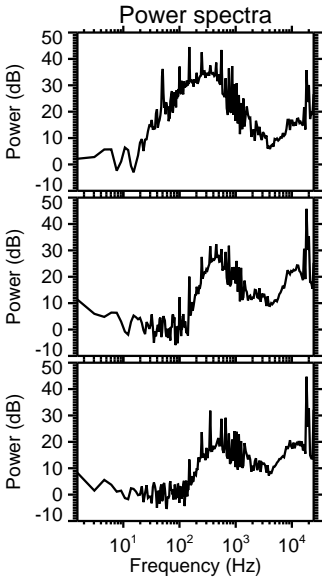
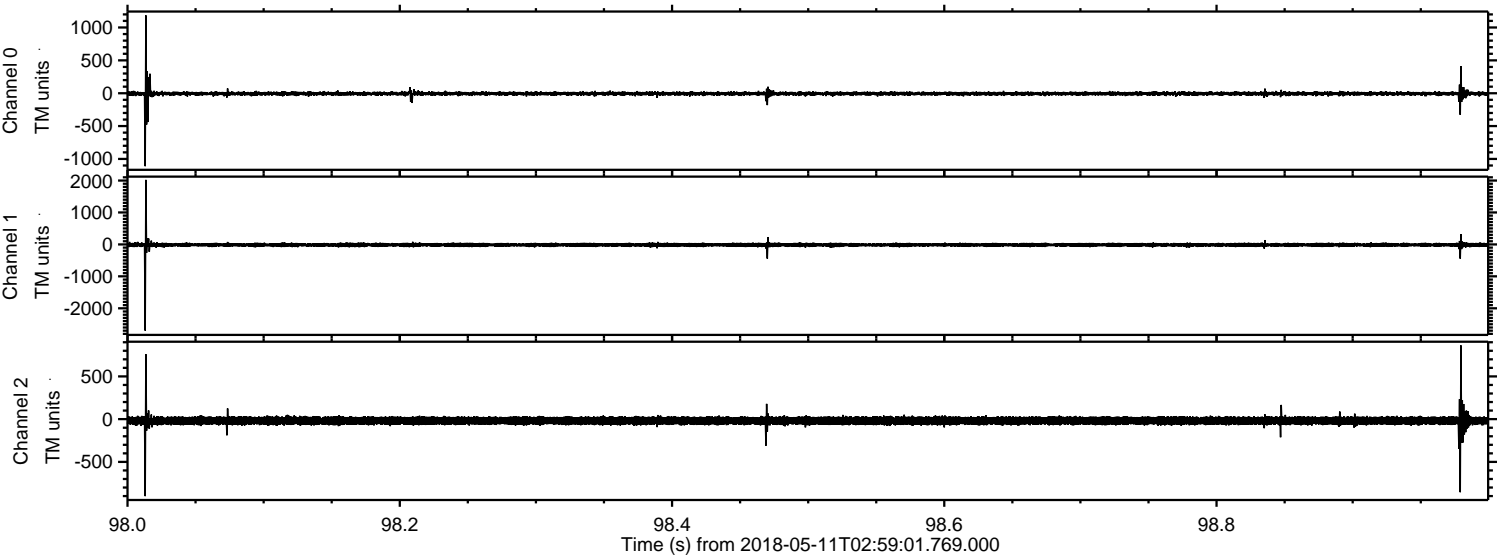


ELMAVAN 3D WAVEFORMS (Measured data sampled at 50 kHz) 51000 packets of 144 samples from 2018-05-11T02:59:01.769.000. Part 70/147

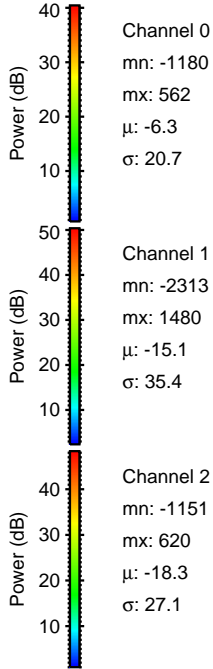
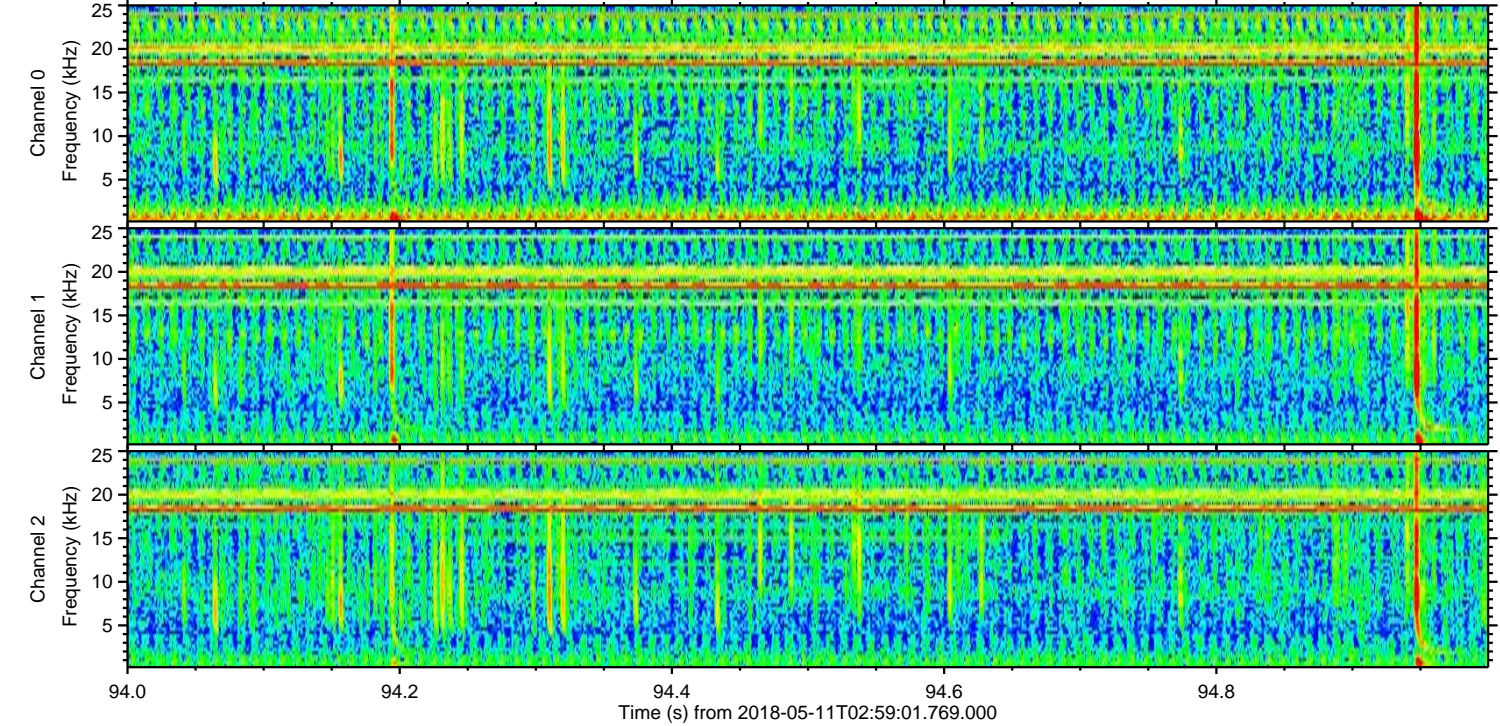
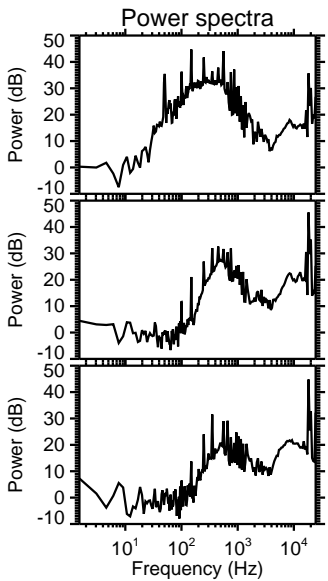
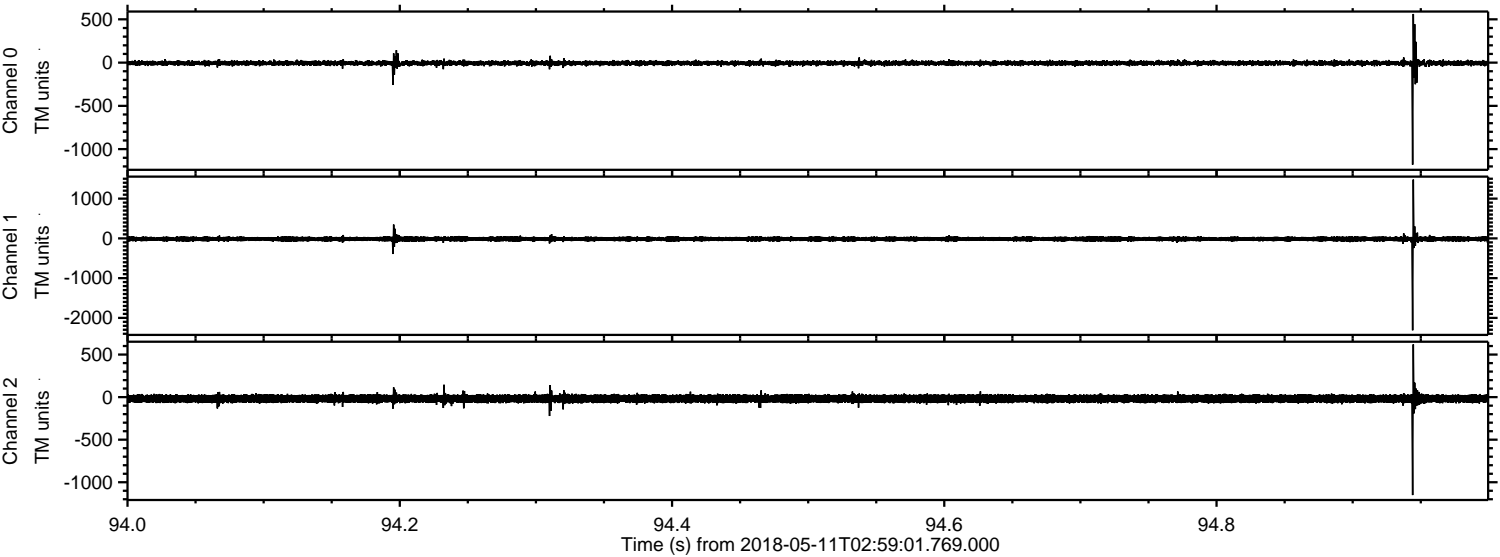
Processed Fri May 11 09:32:09 2018 by ELM ver.2012-10-06 from 001__elm20180511_025900__dat00.bin



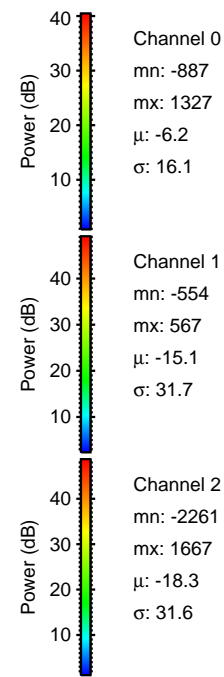
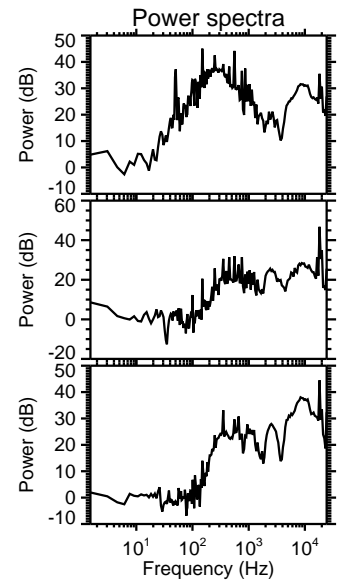
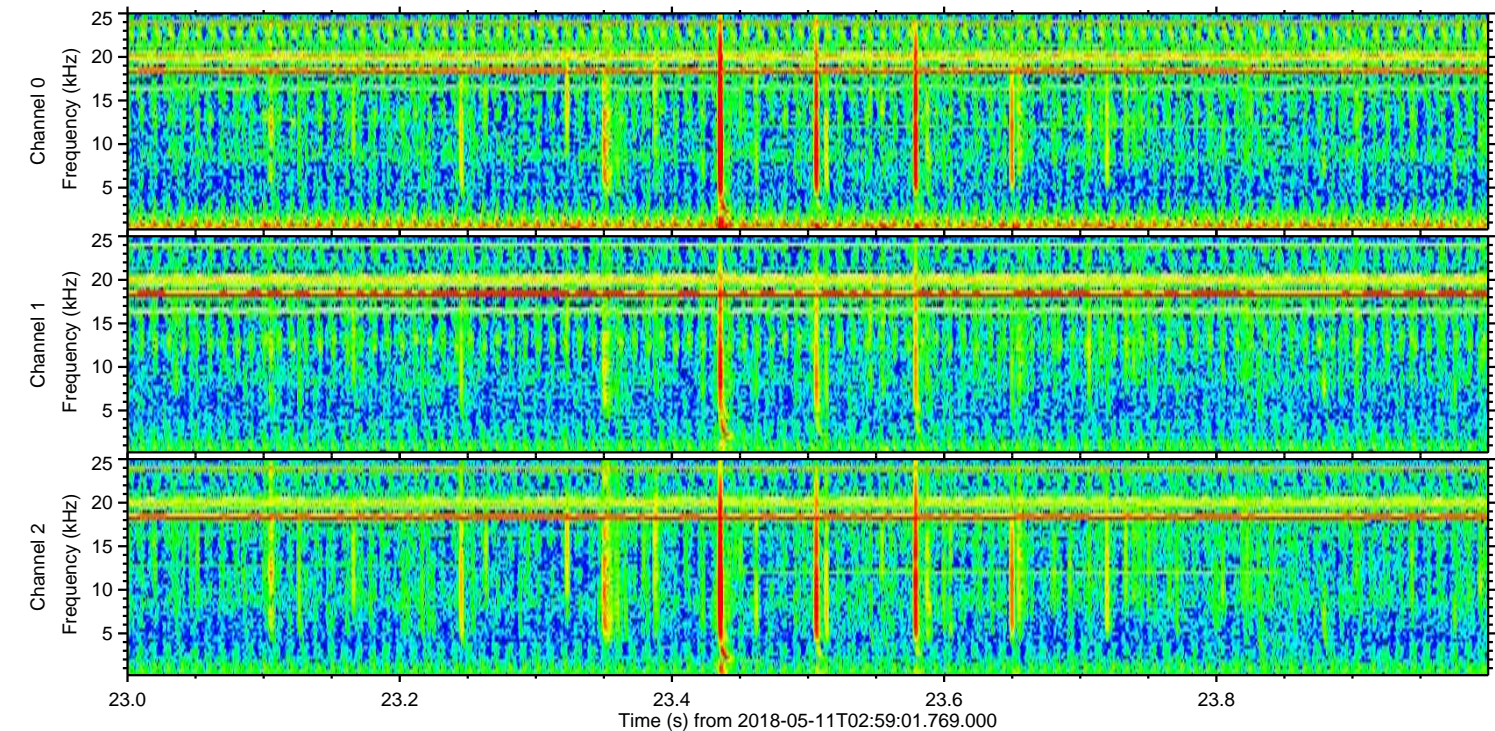
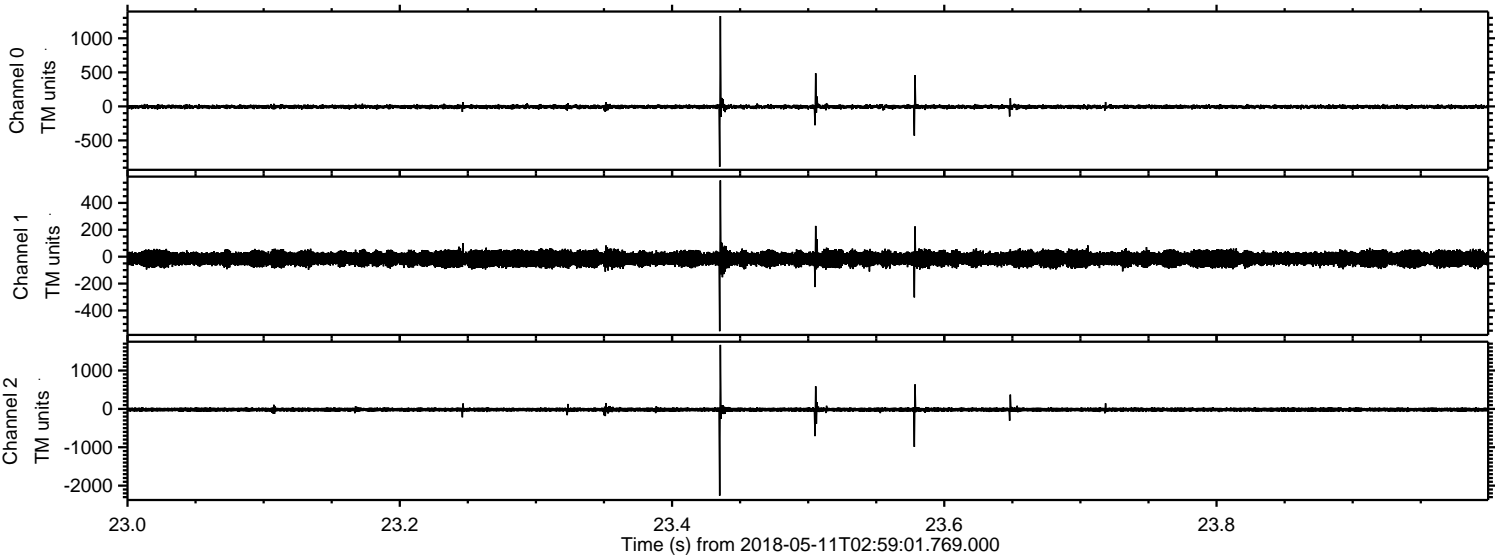
Processed Fri May 11 09:32:09 2018 by ELM ver.2012-10-06 from 001__elm20180511_025900__dat00.bin



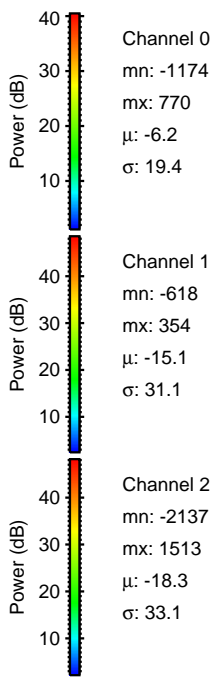
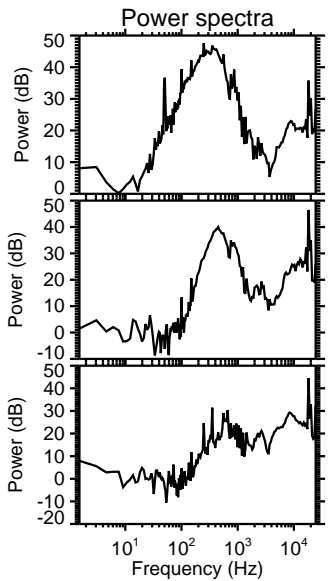
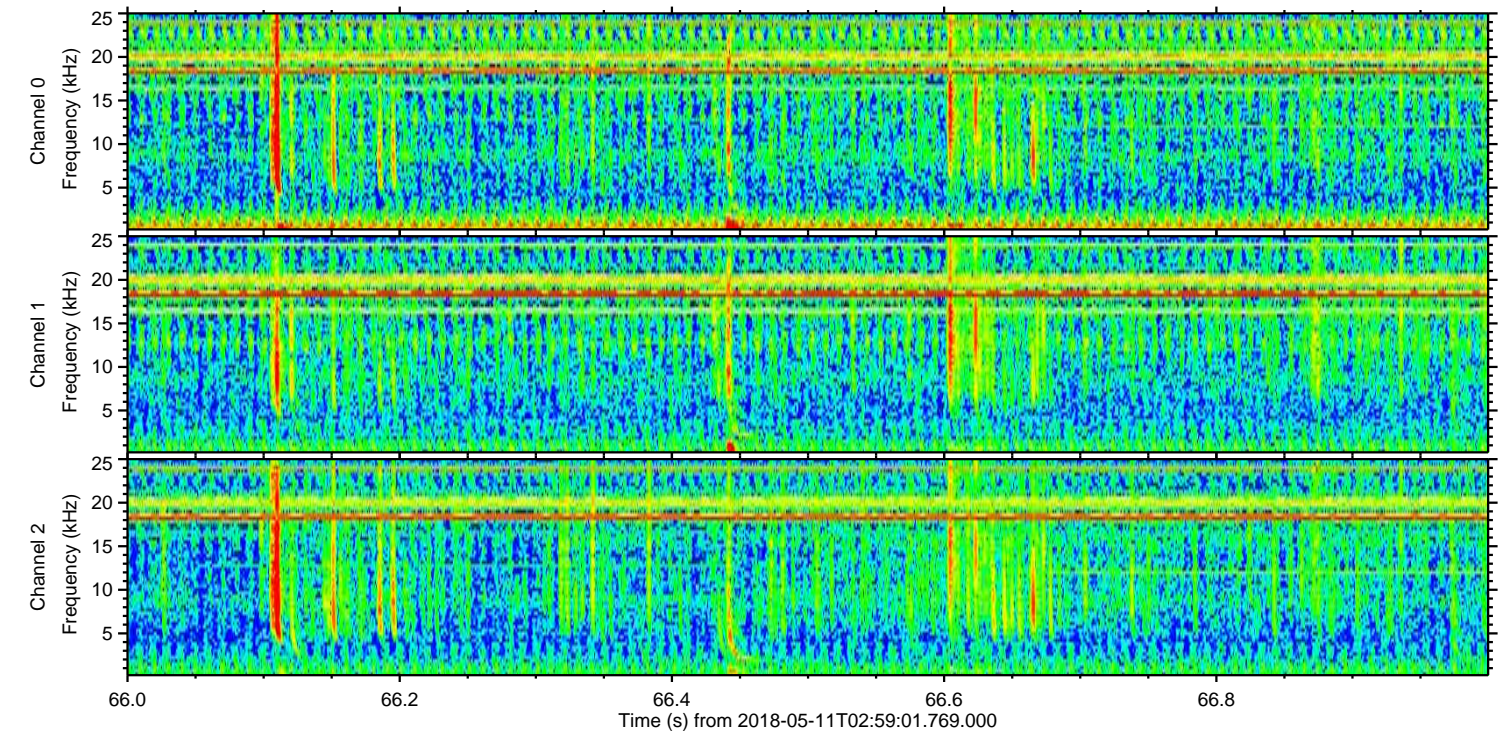
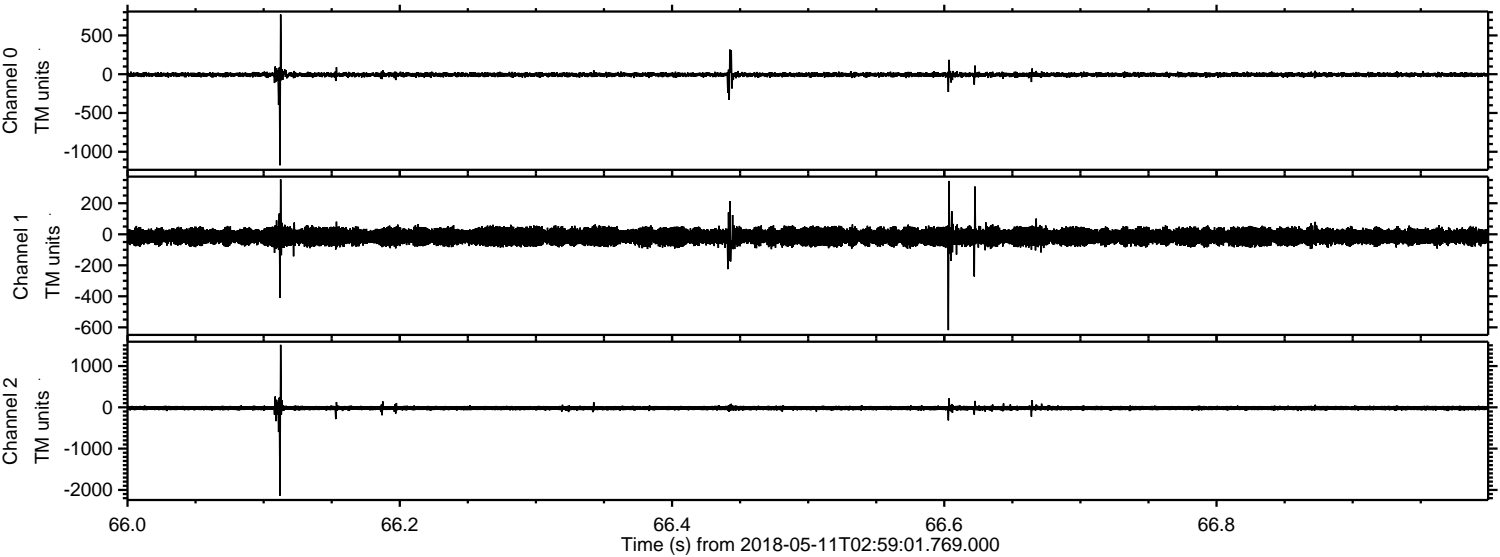
Processed Fri May 11 09:32:10 2018 by ELM ver.2012-10-06 from 001__elm20180511_025900__dat00.bin



Processed Fri May 11 09:32:11 2018 by ELM ver.2012-10-06 from 001__elm20180511_025900__dat00.bin



Processed Fri May 11 09:32:12 2018 by ELM ver.2012-10-06 from 001__elm20180511_025900__dat00.bin



Channel 0
mn: -1174
mx: 770
 μ : -6.2
 σ : 19.4

Channel 1
mn: -618
mx: 354
 μ : -15.1
 σ : 31.1

Channel 2
mn: -2137
mx: 1513
 μ : -18.3
 σ : 33.1

Processed Fri May 11 09:32:13 2018 by ELM ver.2012-10-06 from 001__elm20180511_025900__dat00.bin

