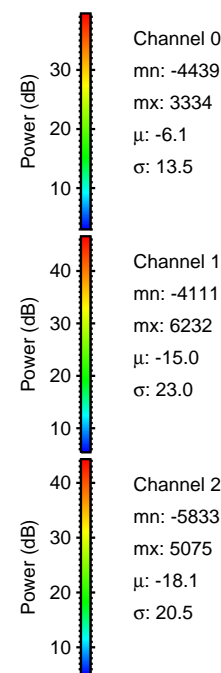
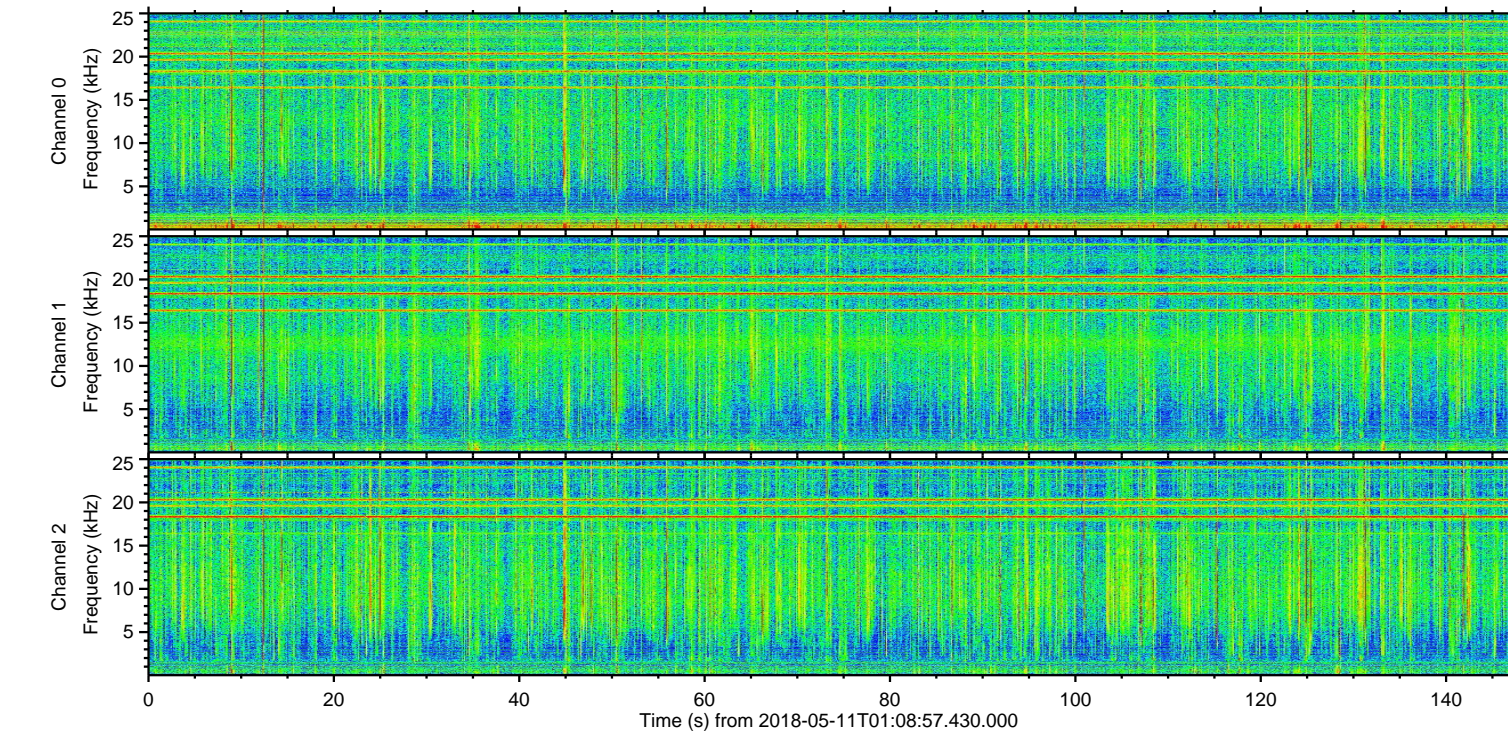
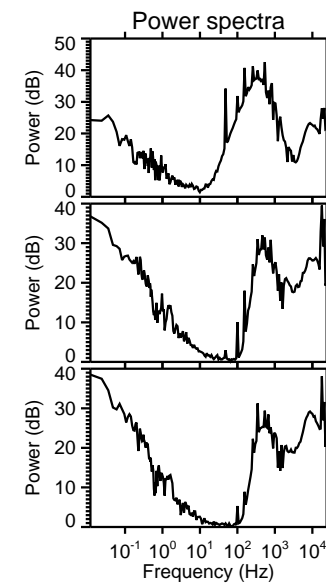
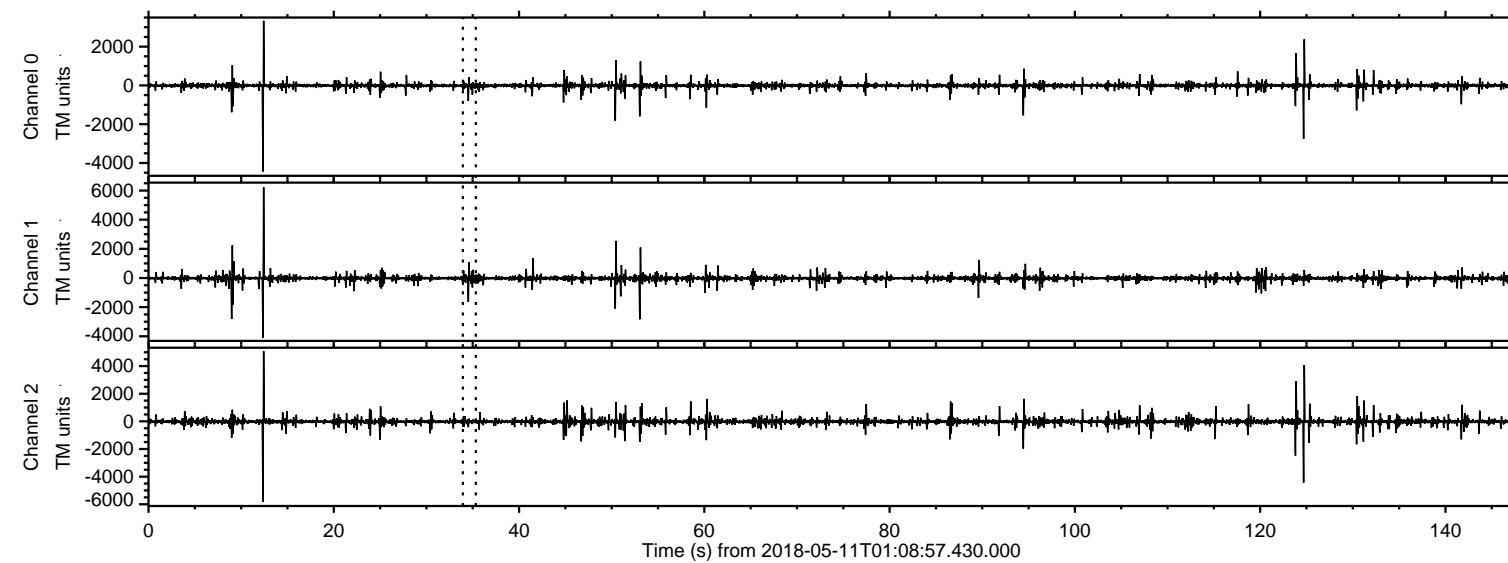
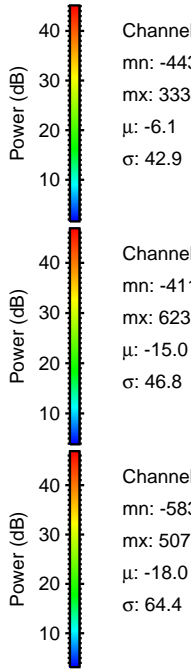
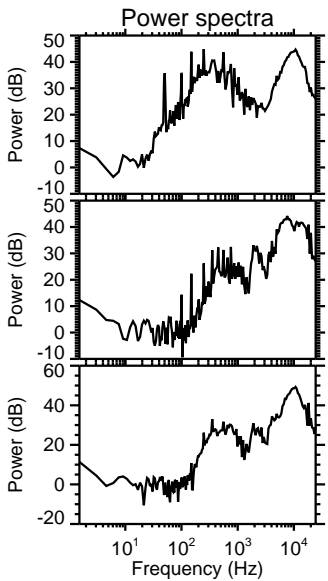
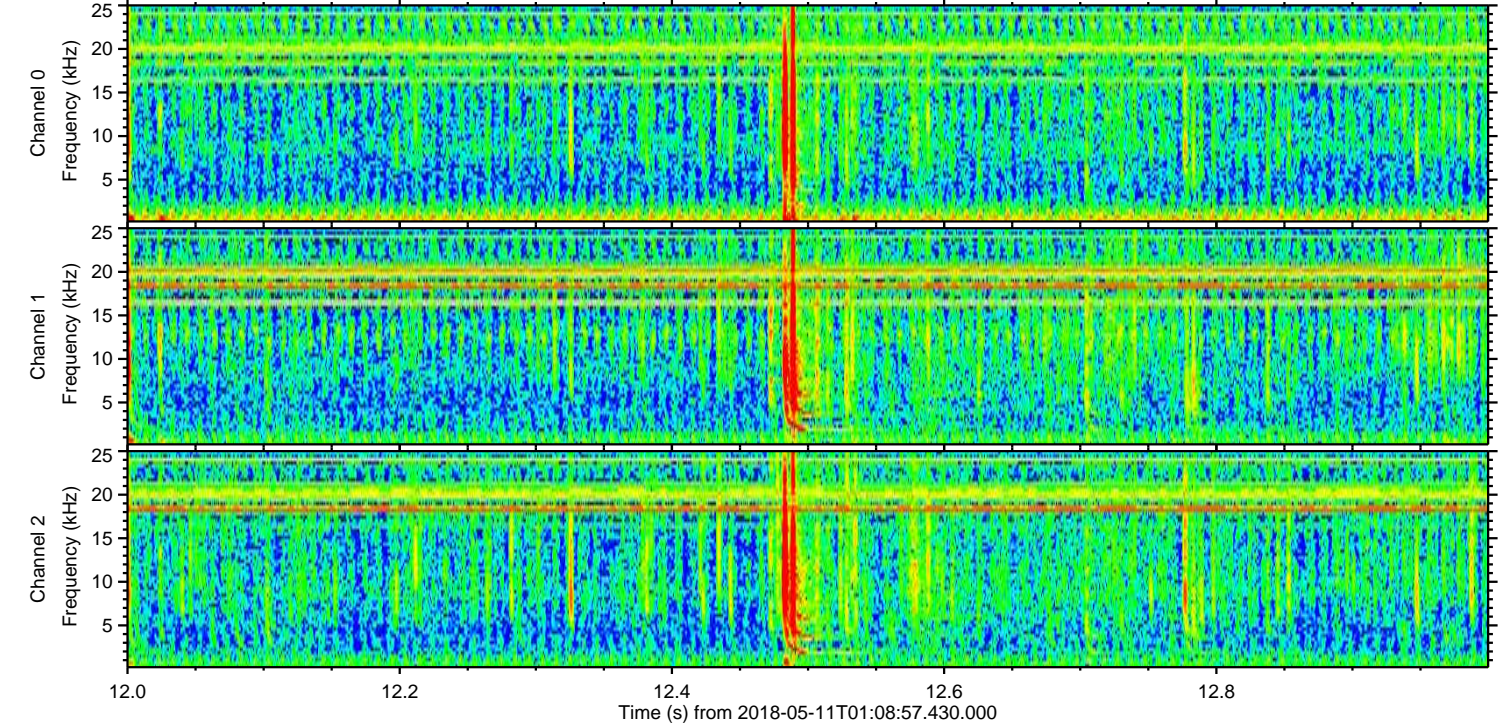
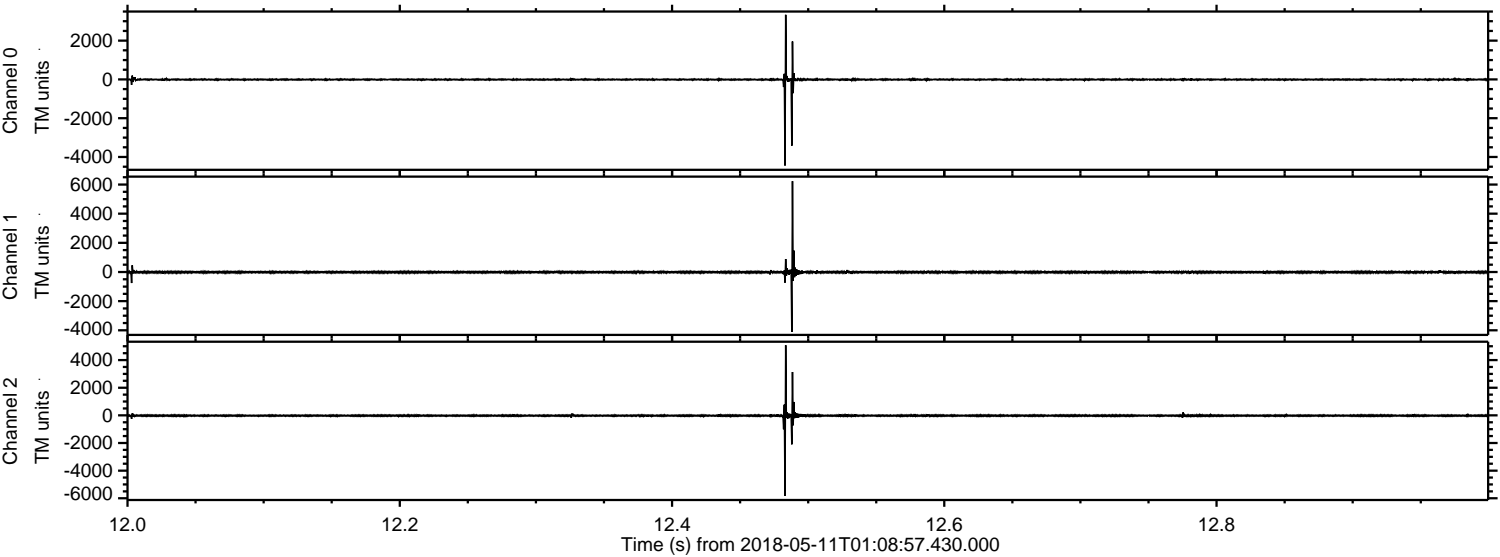


ELMAVAN 3D WAVEFORMS (Measured data sampled at 50 kHz) 50998 packets of 144 samples from 2018-05-11T01:08:57.430.000.

Processed Fri May 11 09:15:19 2018 by ELM ver.2012-10-06 from 001__elm20180511_010856__dat00.bin

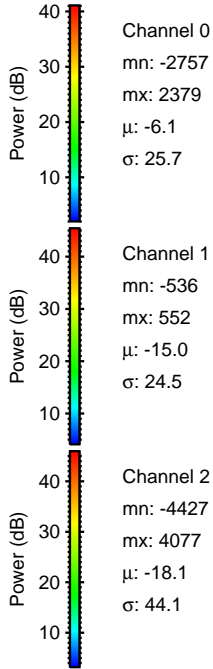
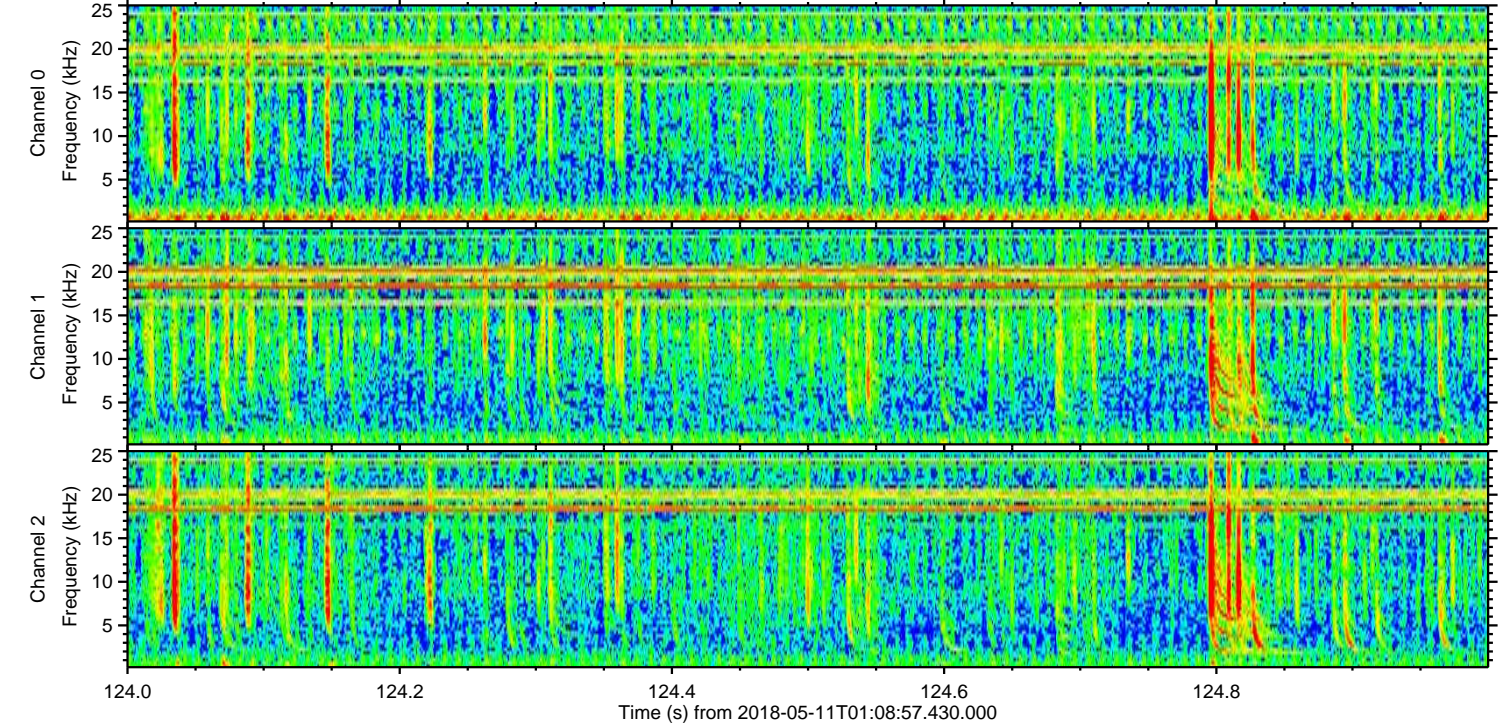
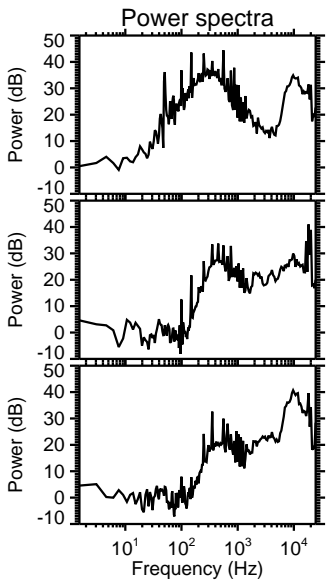
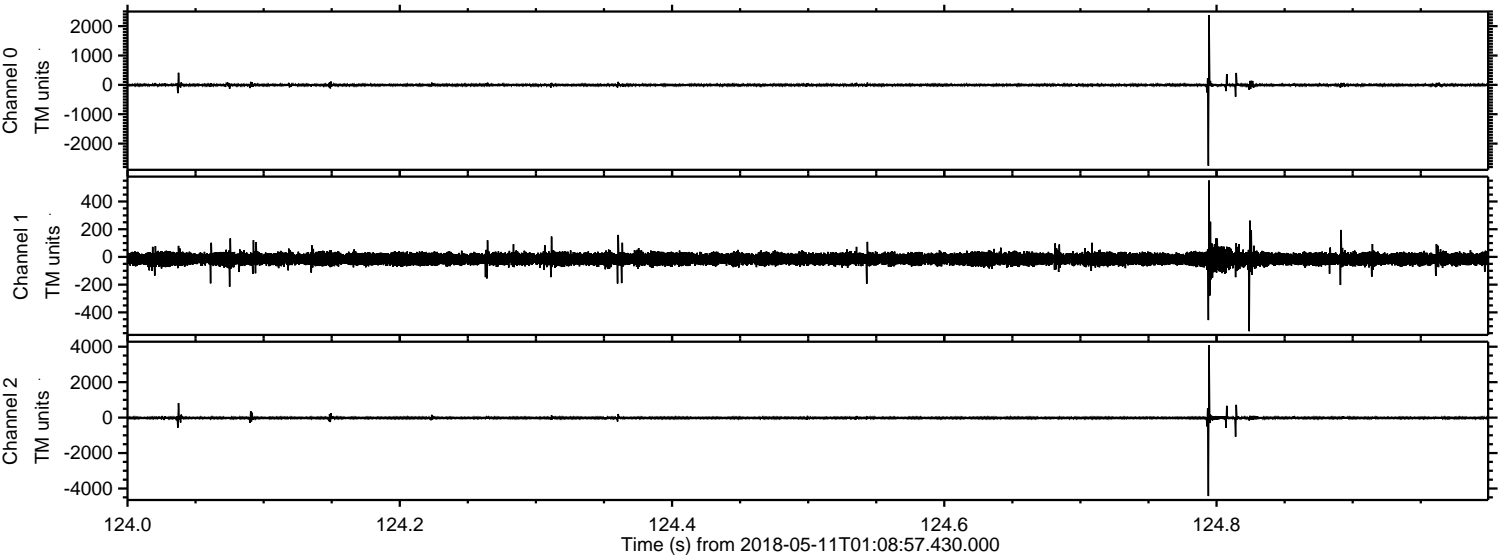


Processed Fri May 11 09:15:26 2018 by ELM ver.2012-10-06 from 001__elm20180511_010856__dat00.bin



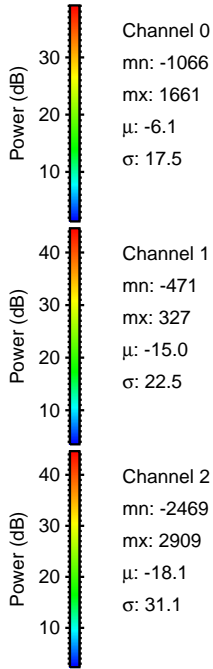
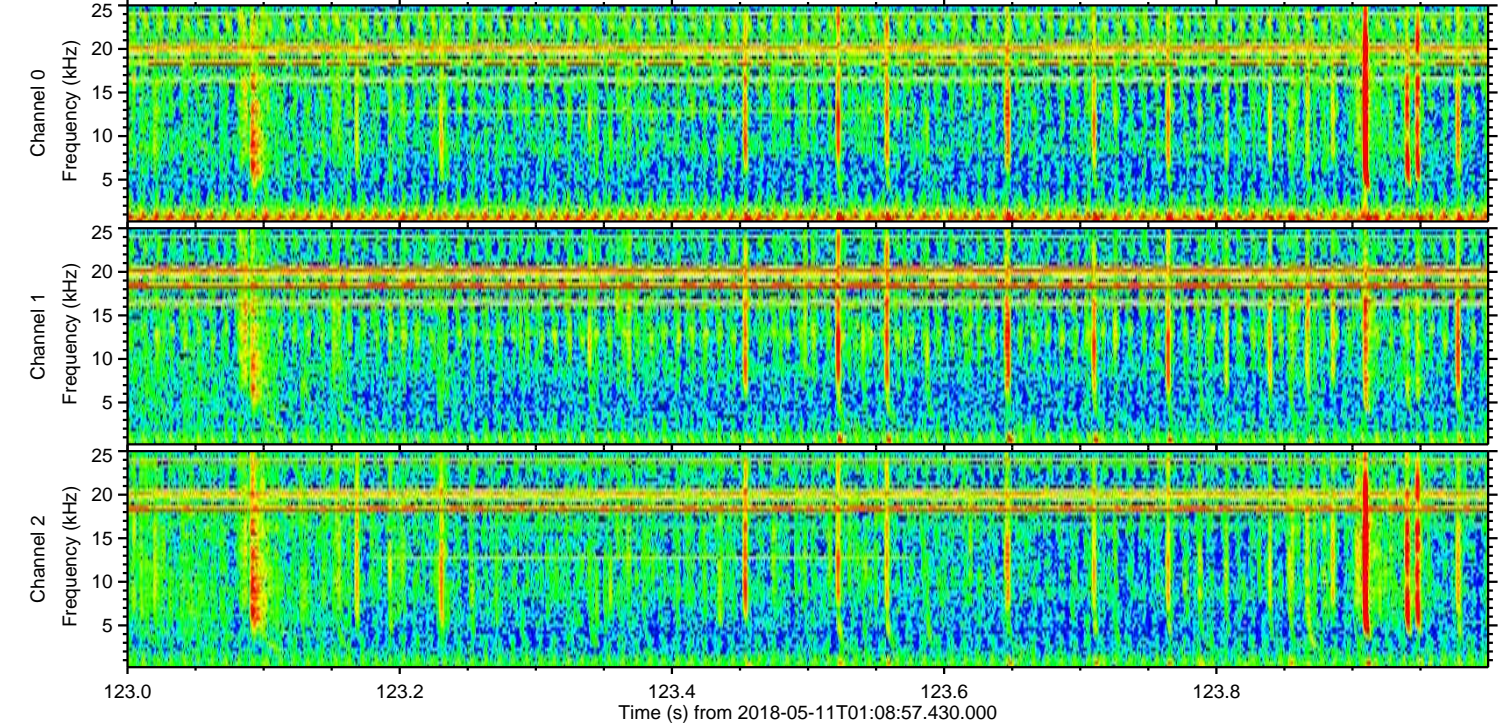
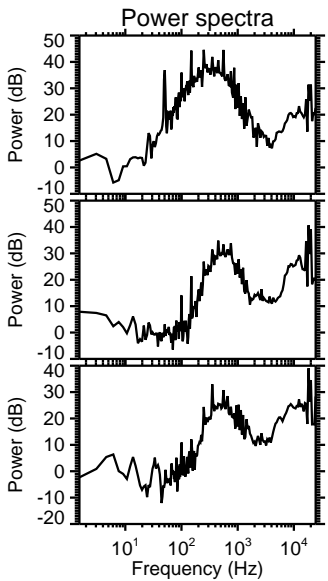
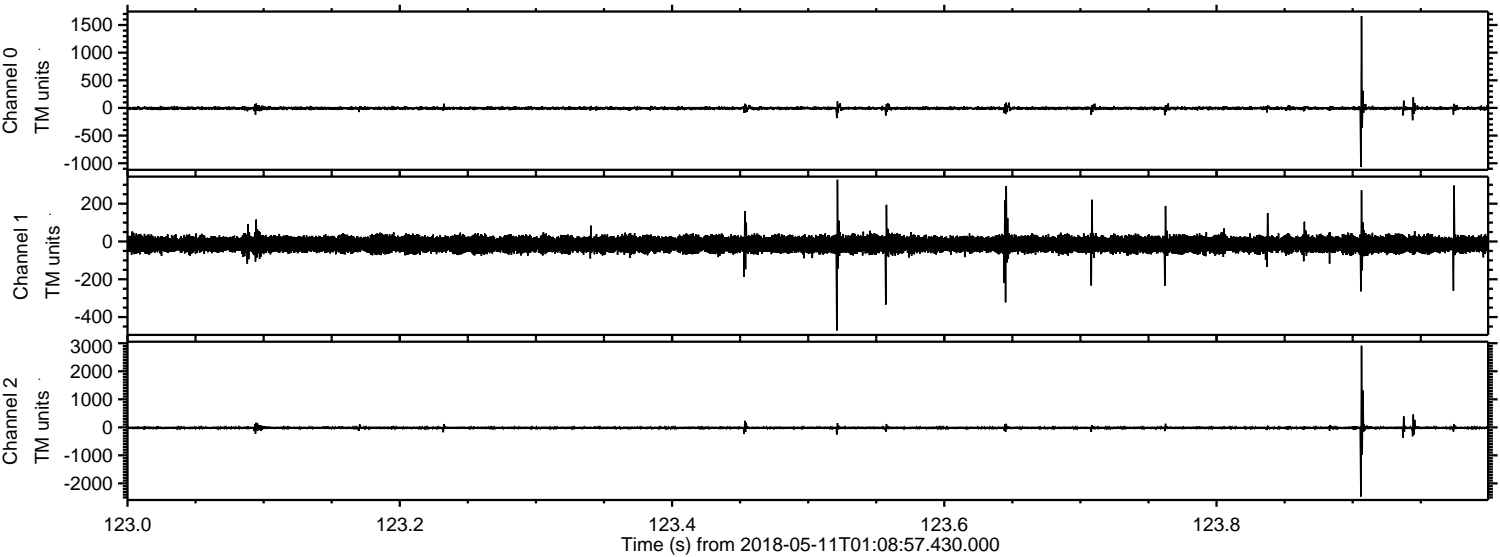
ELMAVAN 3D WAVEFORMS (Measured data sampled at 50 kHz) 50998 packets of 144 samples from 2018-05-11T01:08:57.430.000. Part 125/147

Processed Fri May 11 09:15:27 2018 by ELM ver.2012-10-06 from 001__elm20180511_010856__dat00.bin

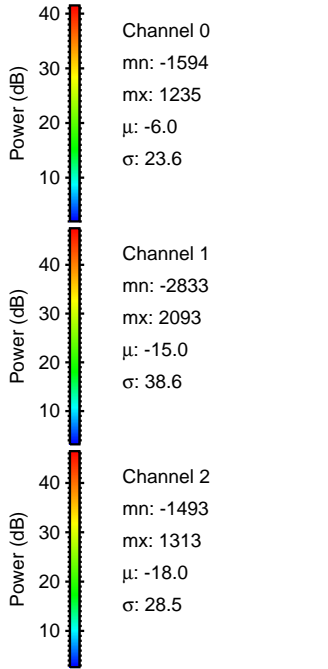
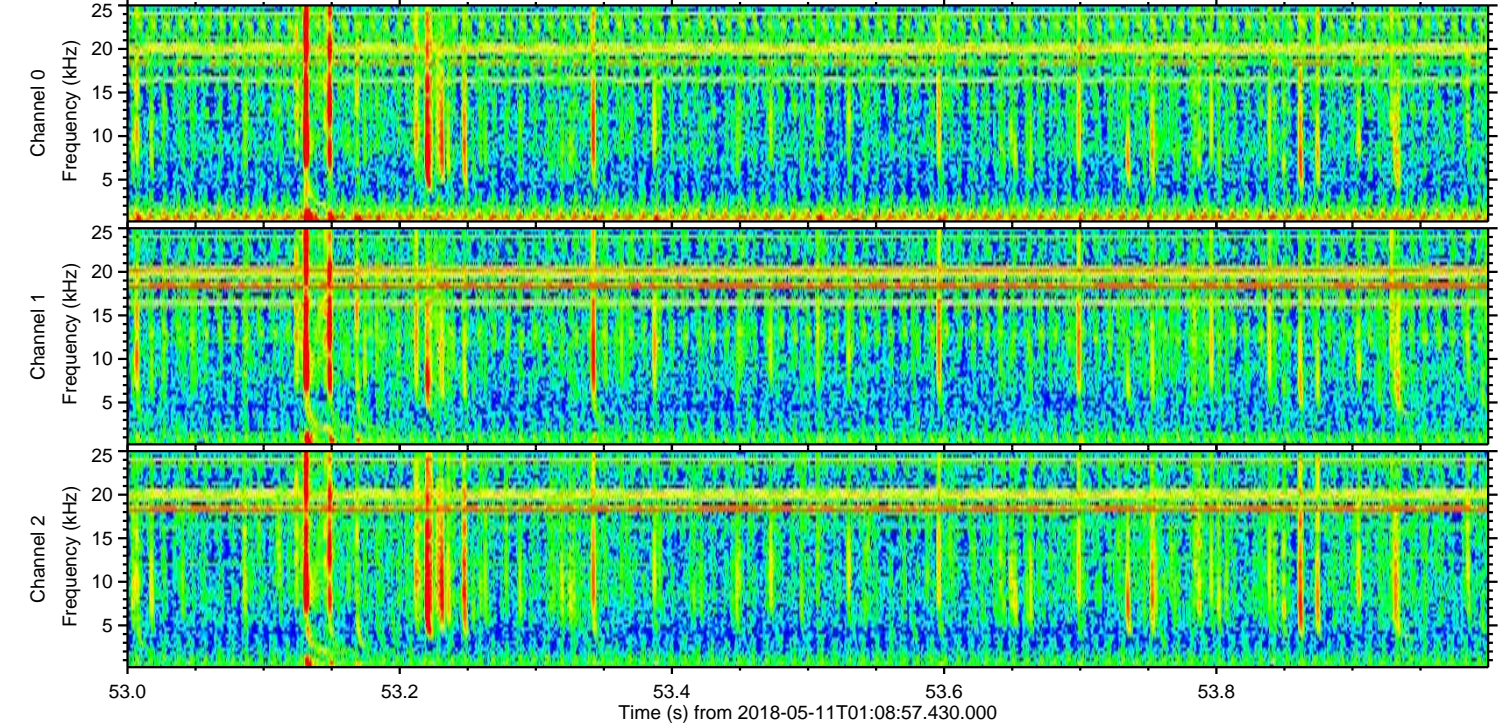
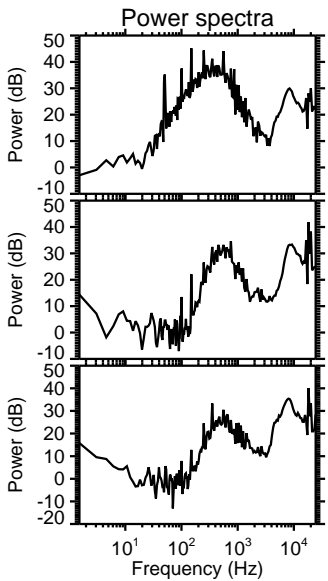
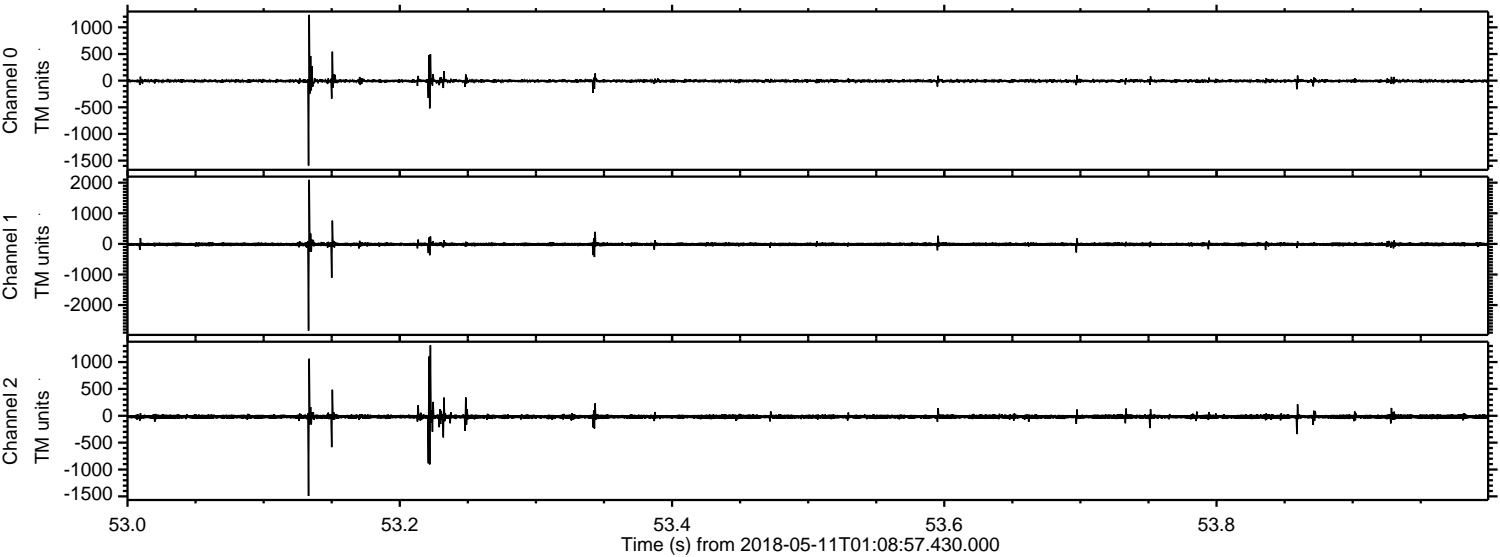


ELMAVAN 3D WAVEFORMS (Measured data sampled at 50 kHz) 50998 packets of 144 samples from 2018-05-11T01:08:57.430.000. Part 124/147

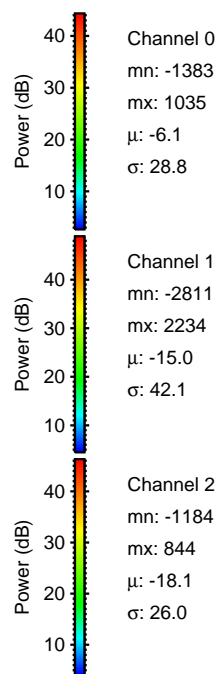
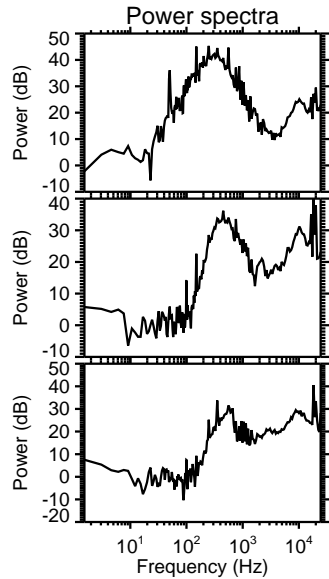
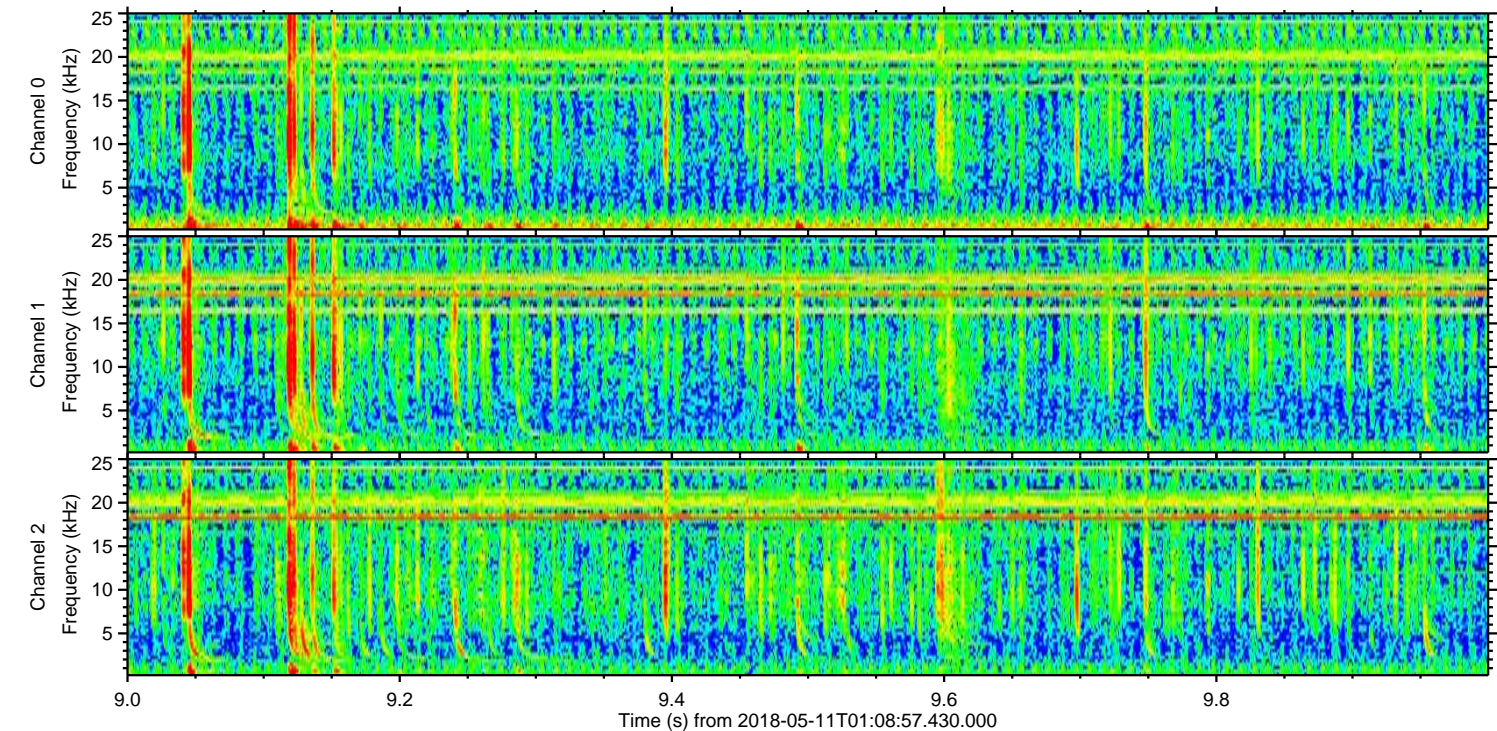
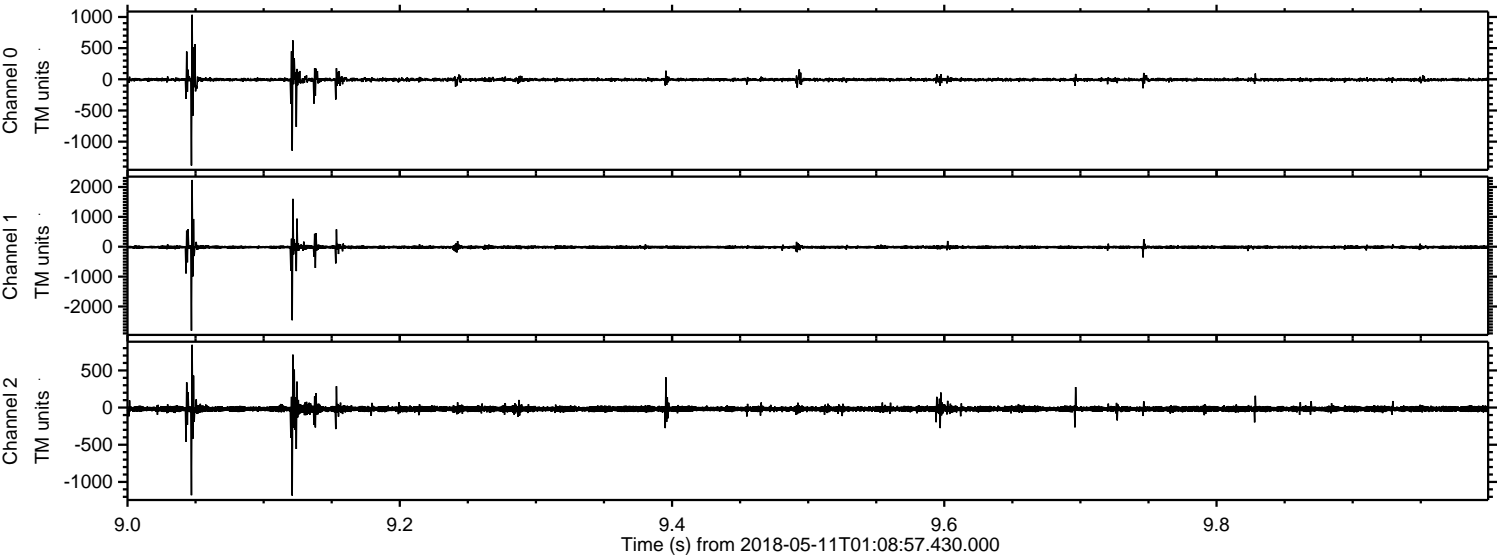
Processed Fri May 11 09:15:28 2018 by ELM ver.2012-10-06 from 001__elm20180511_010856__dat00.bin



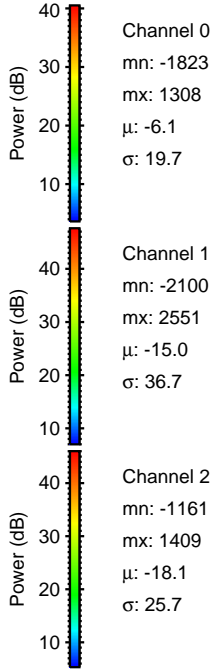
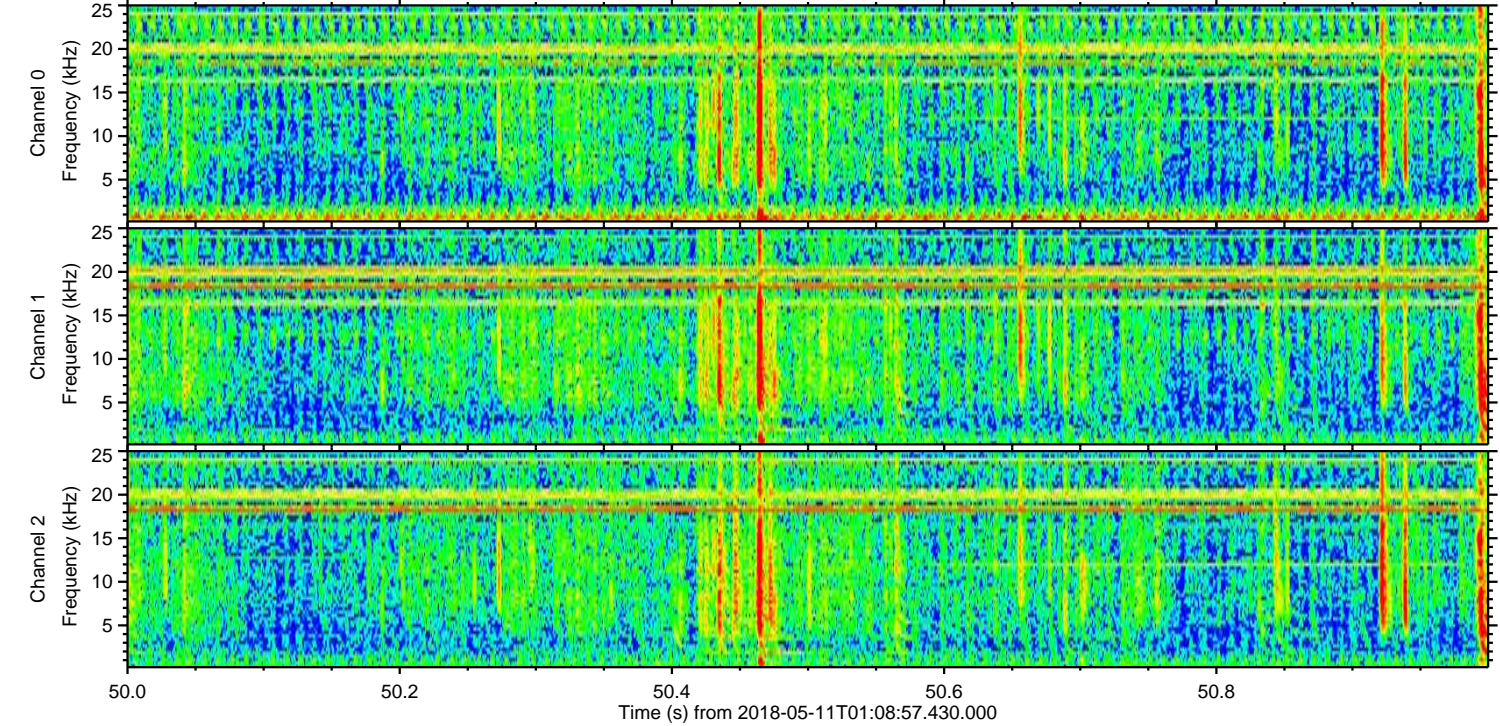
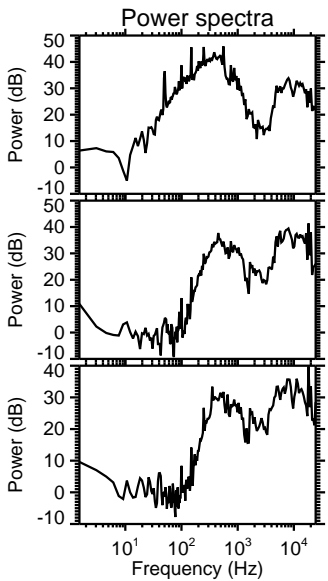
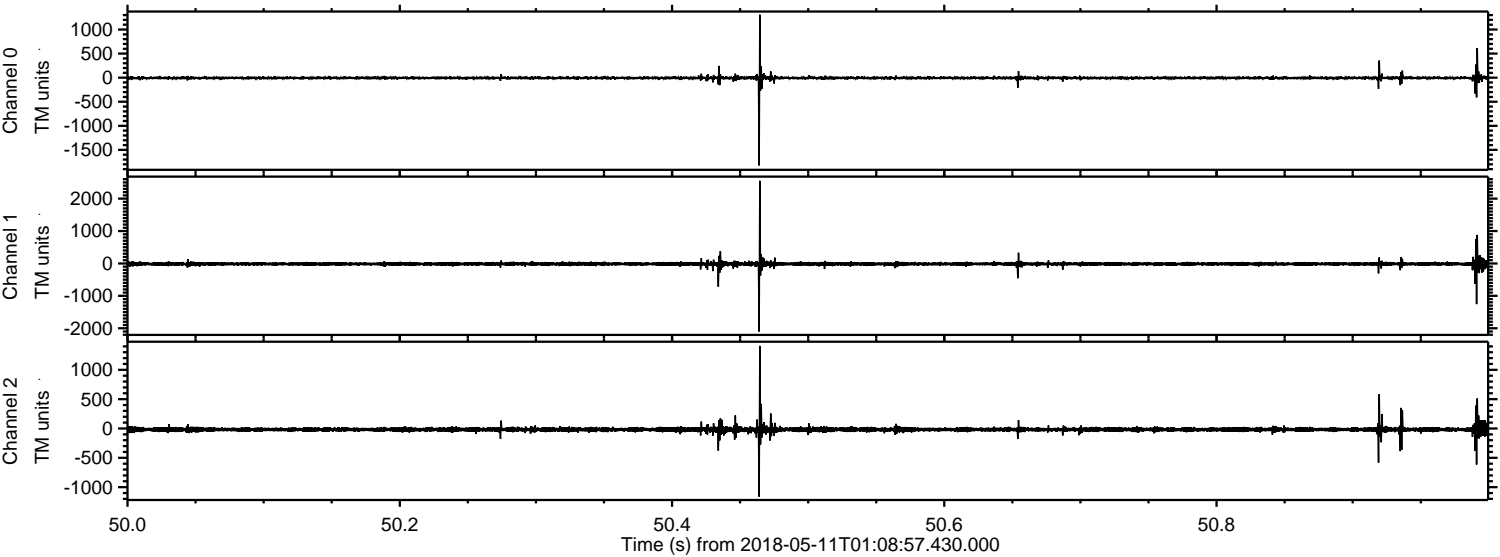
Processed Fri May 11 09:15:28 2018 by ELM ver.2012-10-06 from 001__elm20180511_010856__dat00.bin



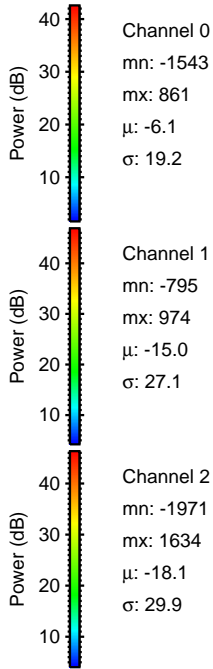
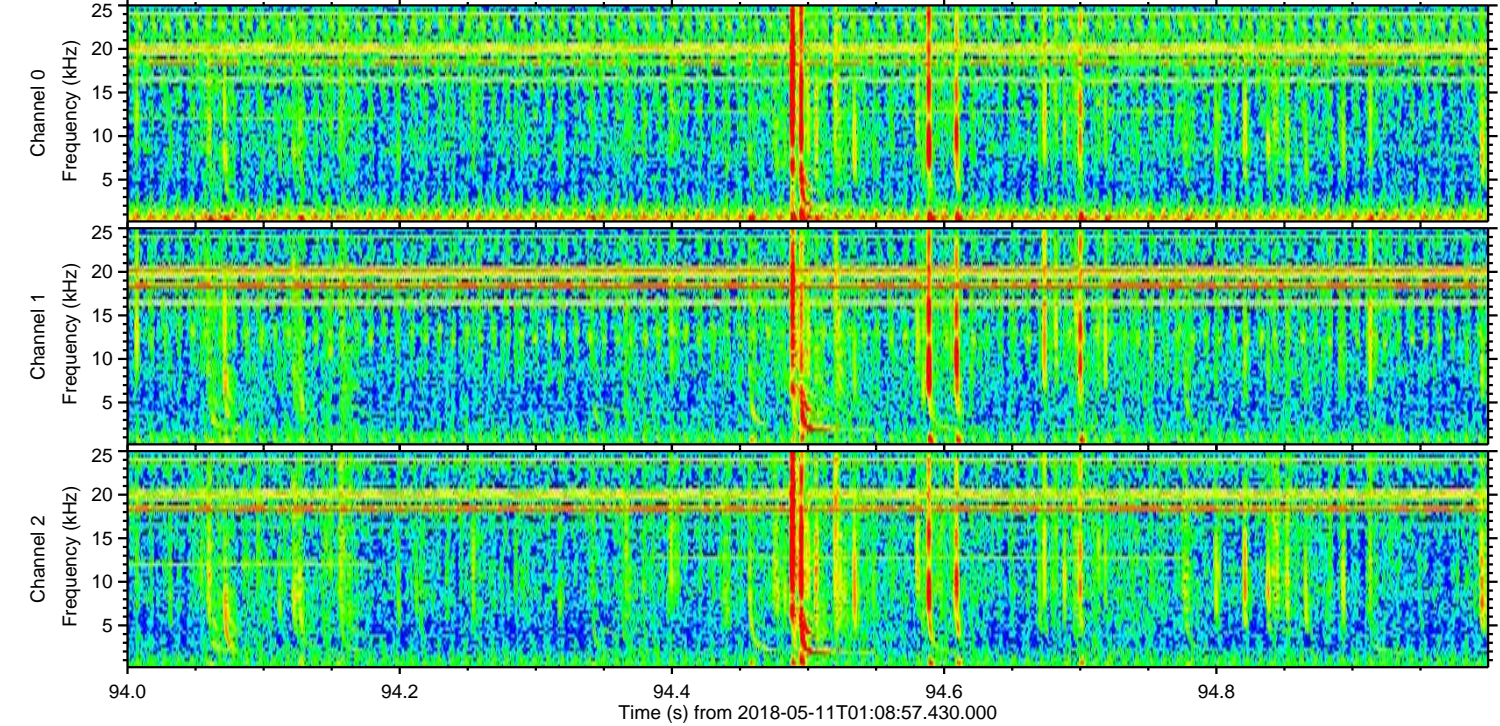
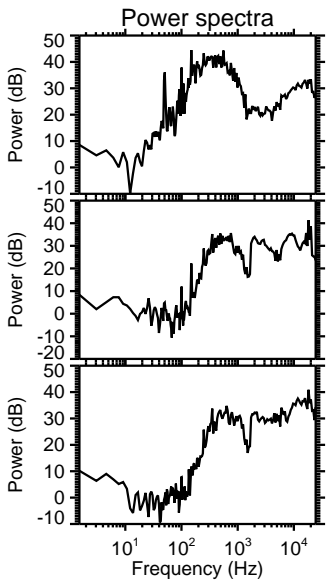
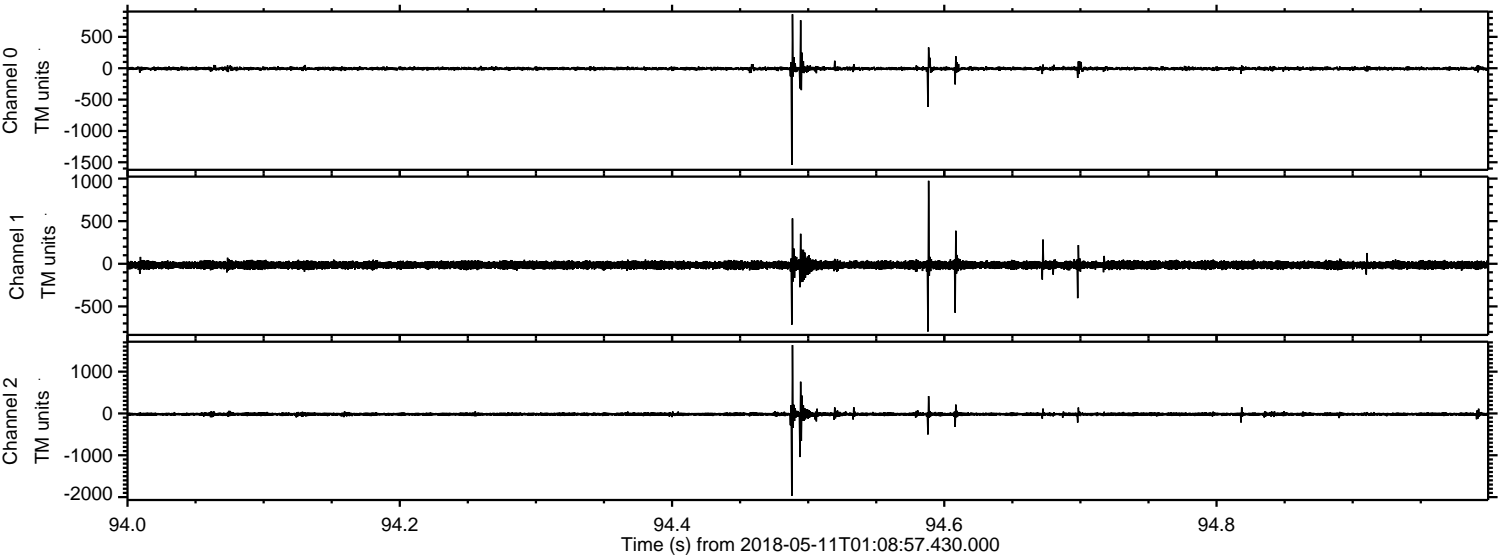
Processed Fri May 11 09:15:29 2018 by ELM ver.2012-10-06 from 001__elm20180511_010856__dat00.bin



Processed Fri May 11 09:15:30 2018 by ELM ver.2012-10-06 from 001__elm20180511_010856__dat00.bin

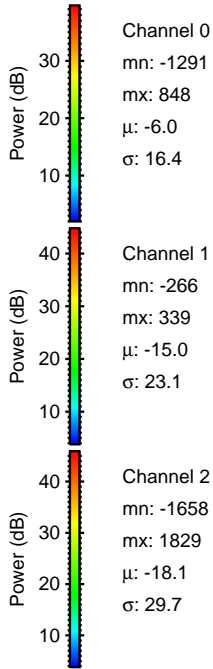
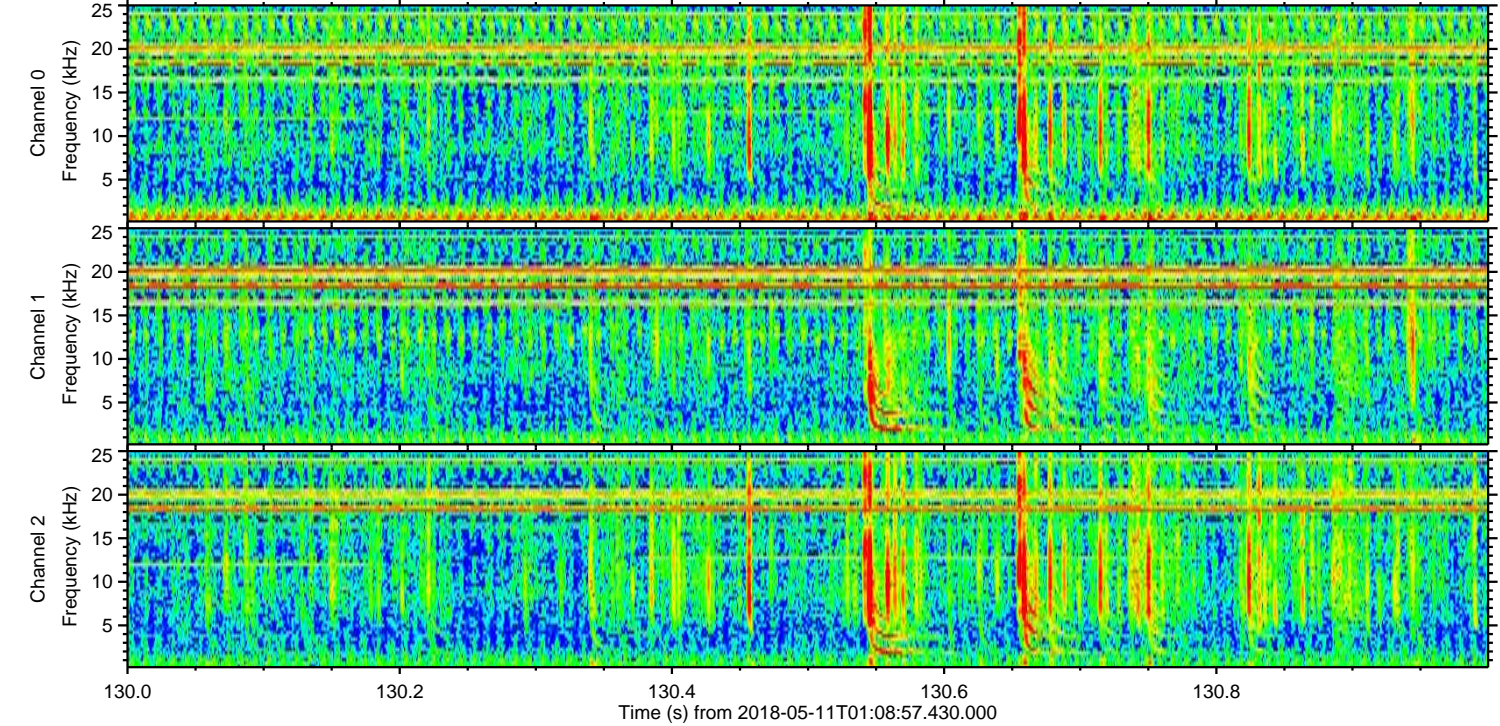
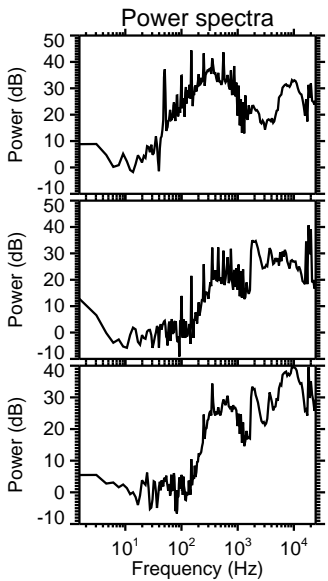
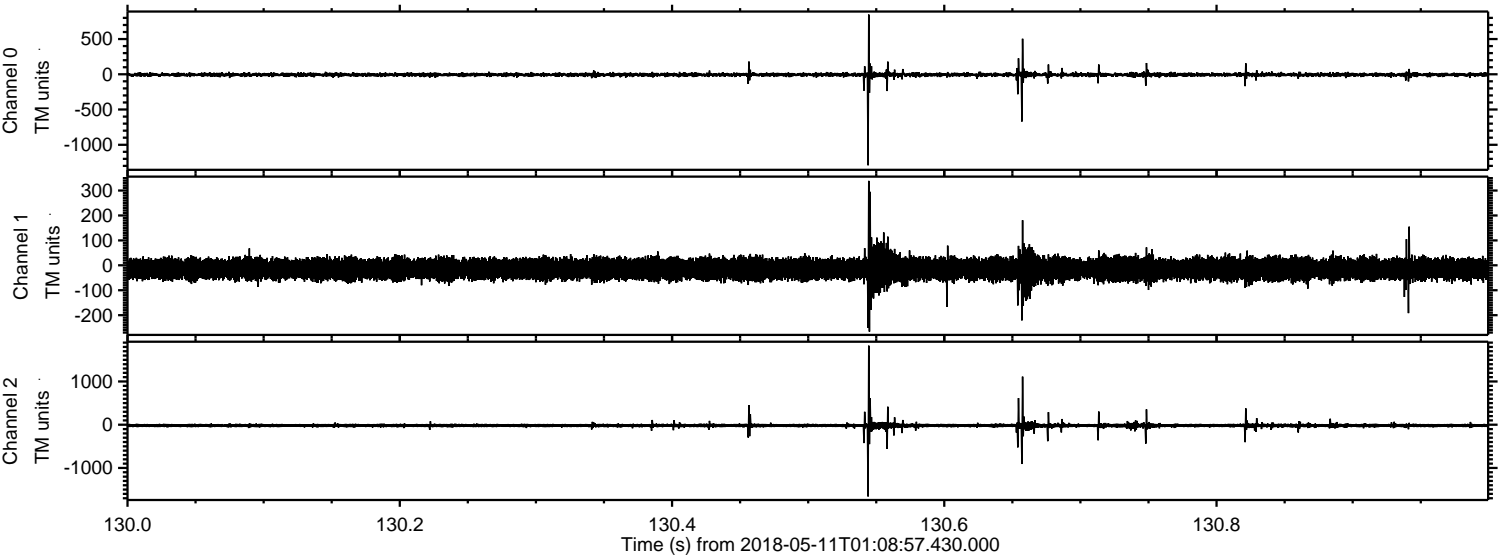


Processed Fri May 11 09:15:31 2018 by ELM ver.2012-10-06 from 001__elm20180511_010856__dat00.bin



ELMAVAN 3D WAVEFORMS (Measured data sampled at 50 kHz) 50998 packets of 144 samples from 2018-05-11T01:08:57.430.000. Part 131/147

Processed Fri May 11 09:15:31 2018 by ELM ver.2012-10-06 from 001__elm20180511_010856__dat00.bin



Channel 0
mn: -1291
mx: 848
 μ : -6.0
 σ : 16.4

Channel 1
mn: -266
mx: 339
 μ : -15.0
 σ : 23.1

Channel 2
mn: -1658
mx: 1829
 μ : -18.1
 σ : 29.7

Processed Fri May 11 09:15:32 2018 by ELM ver.2012-10-06 from 001__elm20180511_010856__dat00.bin

