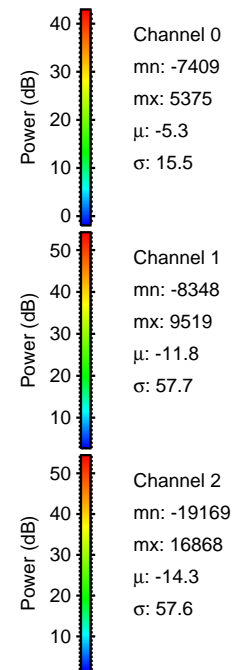
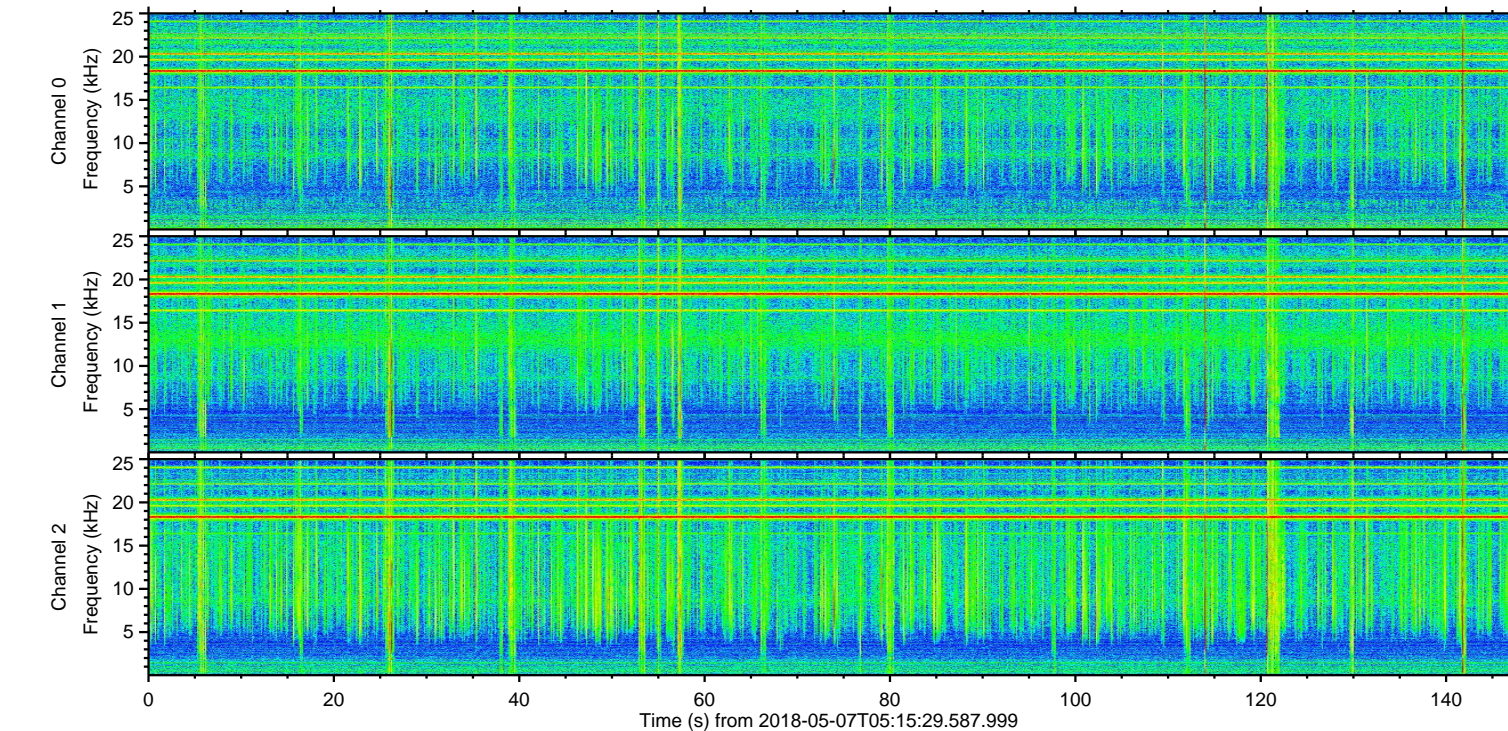
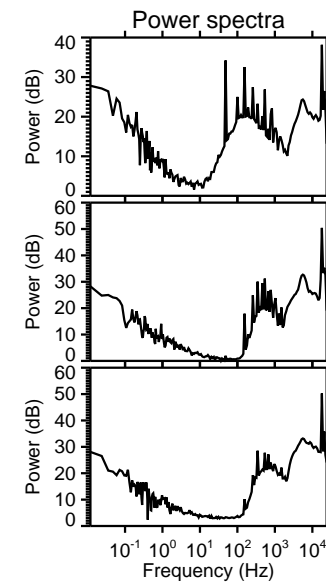
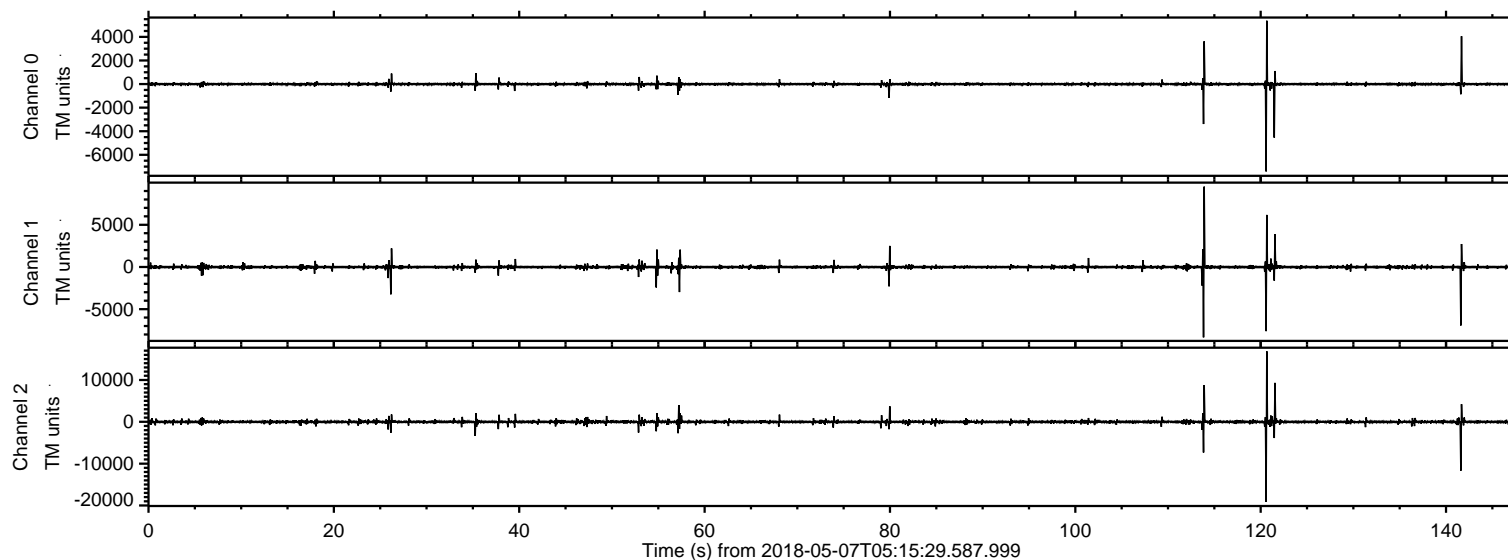


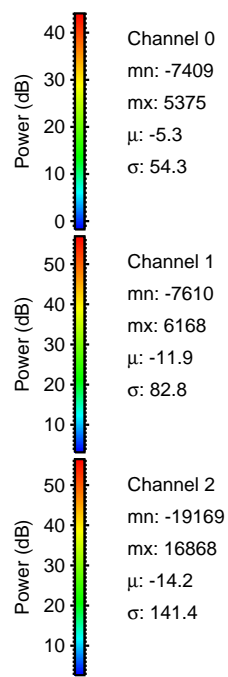
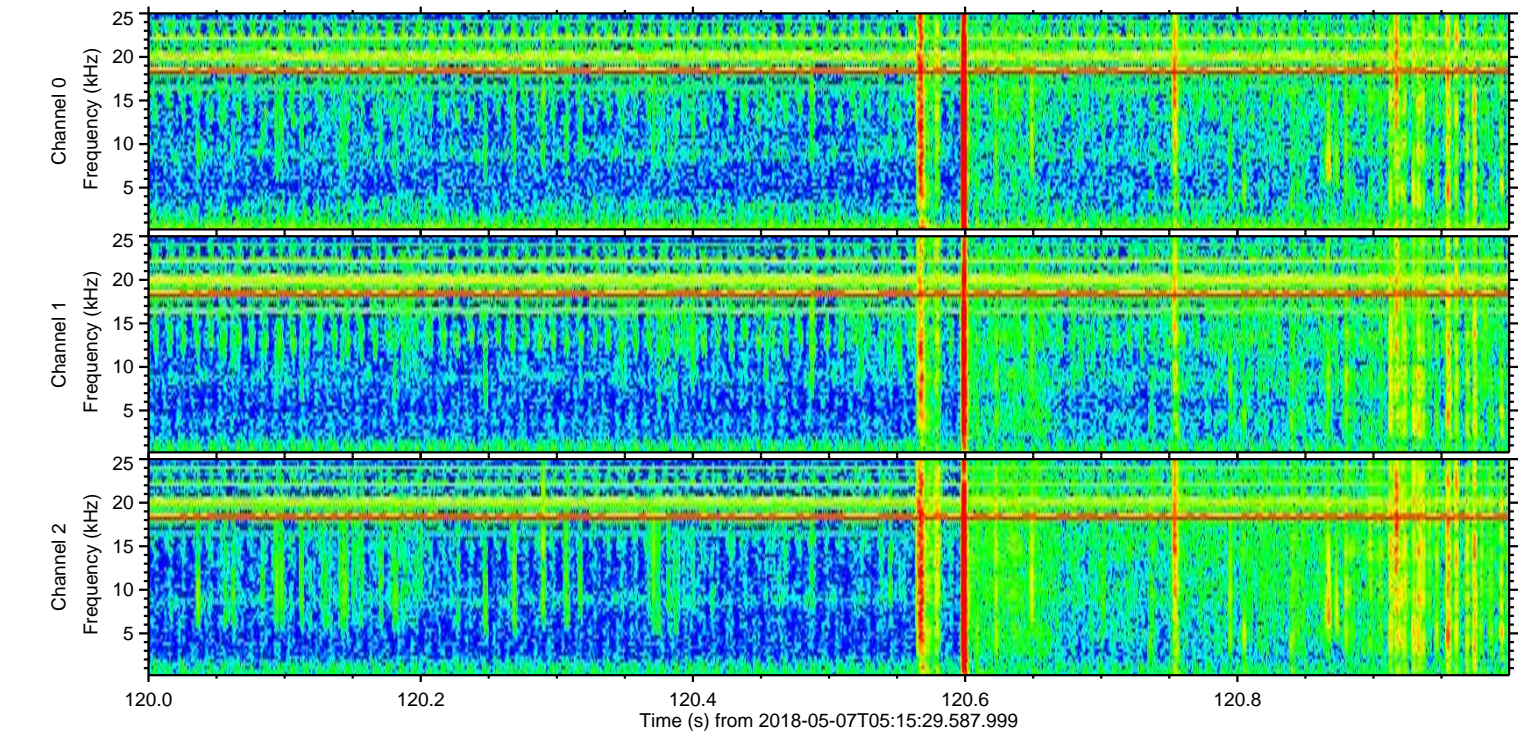
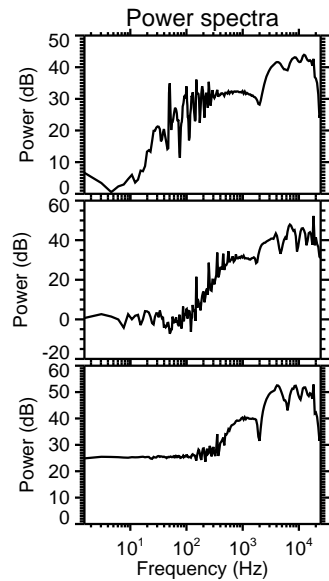
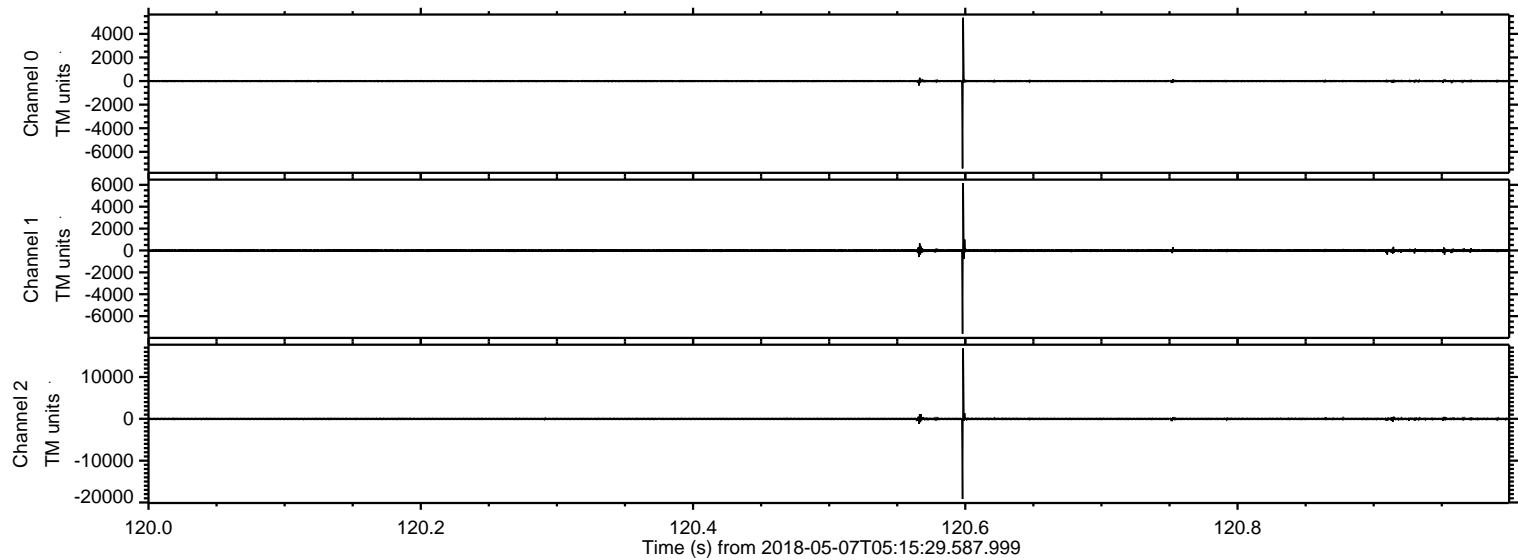
ELMAVAN 3D WAVEFORMS (Measured data sampled at 50 kHz) 51000 packets of 144 samples from 2018-05-07T05:15:29.587.999.

Processed Mon May 7 07:24:28 2018 by ELM ver.2012-10-06 from 001__elm20180507_051528__dat00.bin



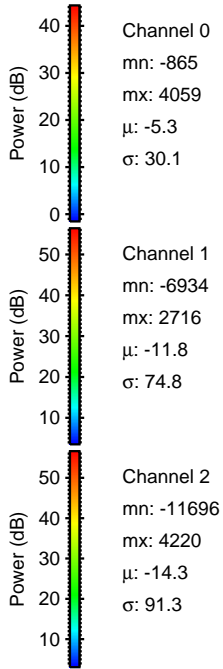
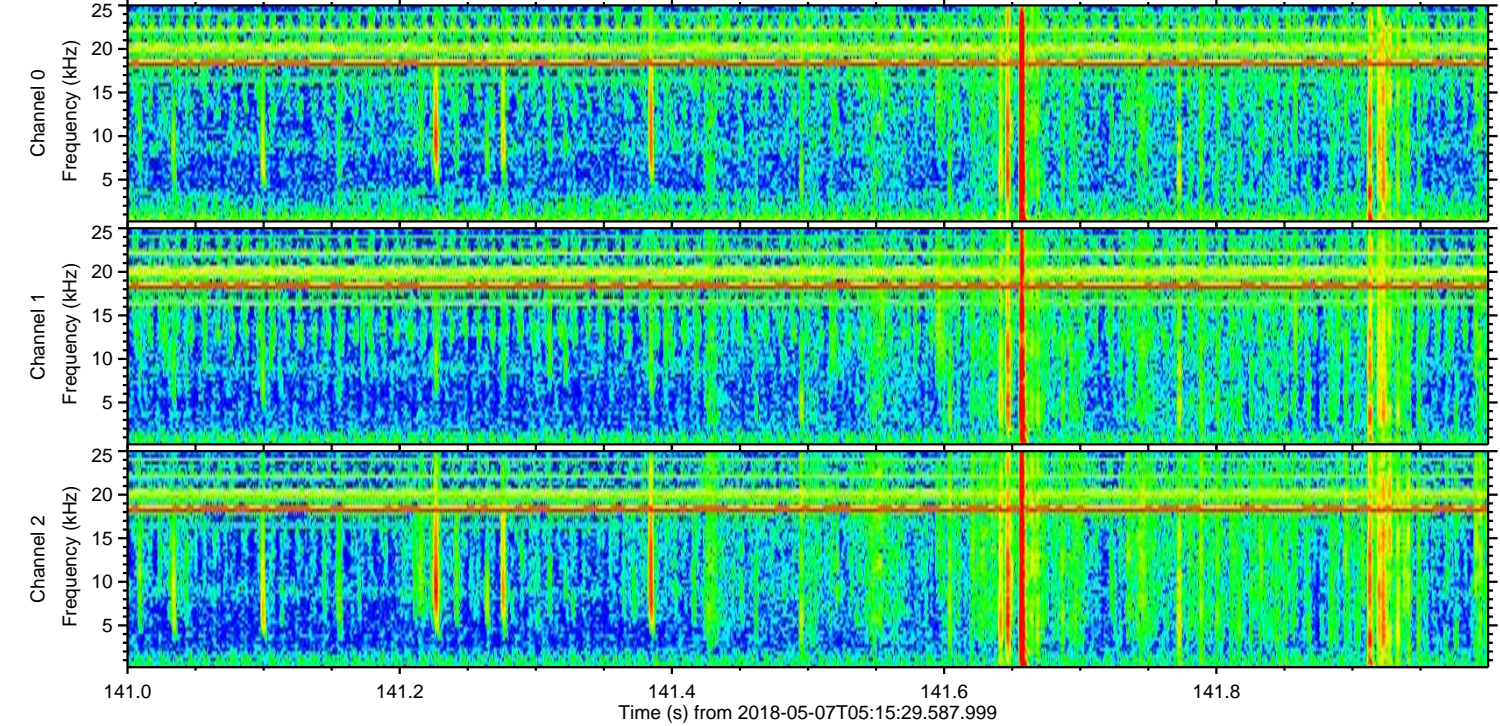
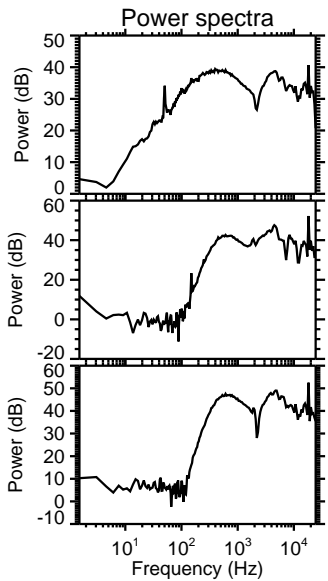
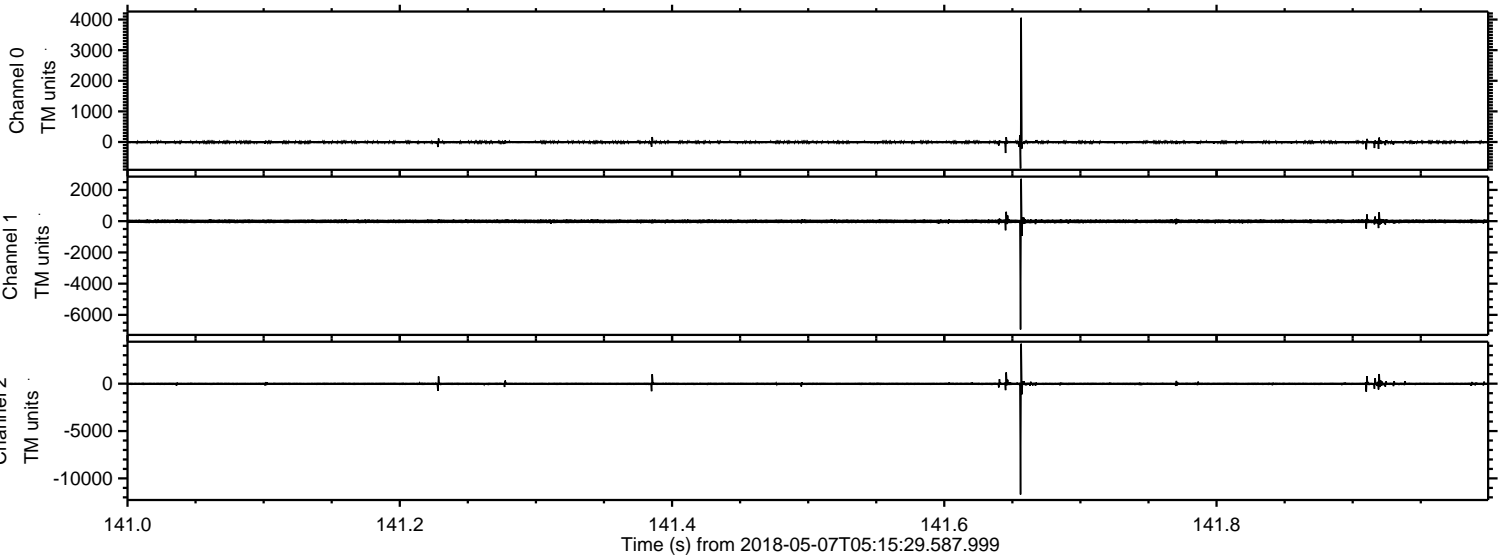
ELMAVAN 3D WAVEFORMS (Measured data sampled at 50 kHz) 51000 packets of 144 samples from 2018-05-07T05:15:29.587.999. Part 121/147

Processed Mon May 7 07:24:34 2018 by ELM ver.2012-10-06 from 001__elm20180507_051528__dat00.bin



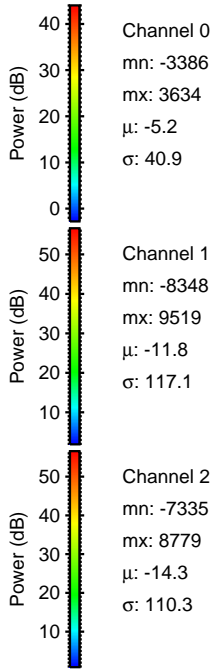
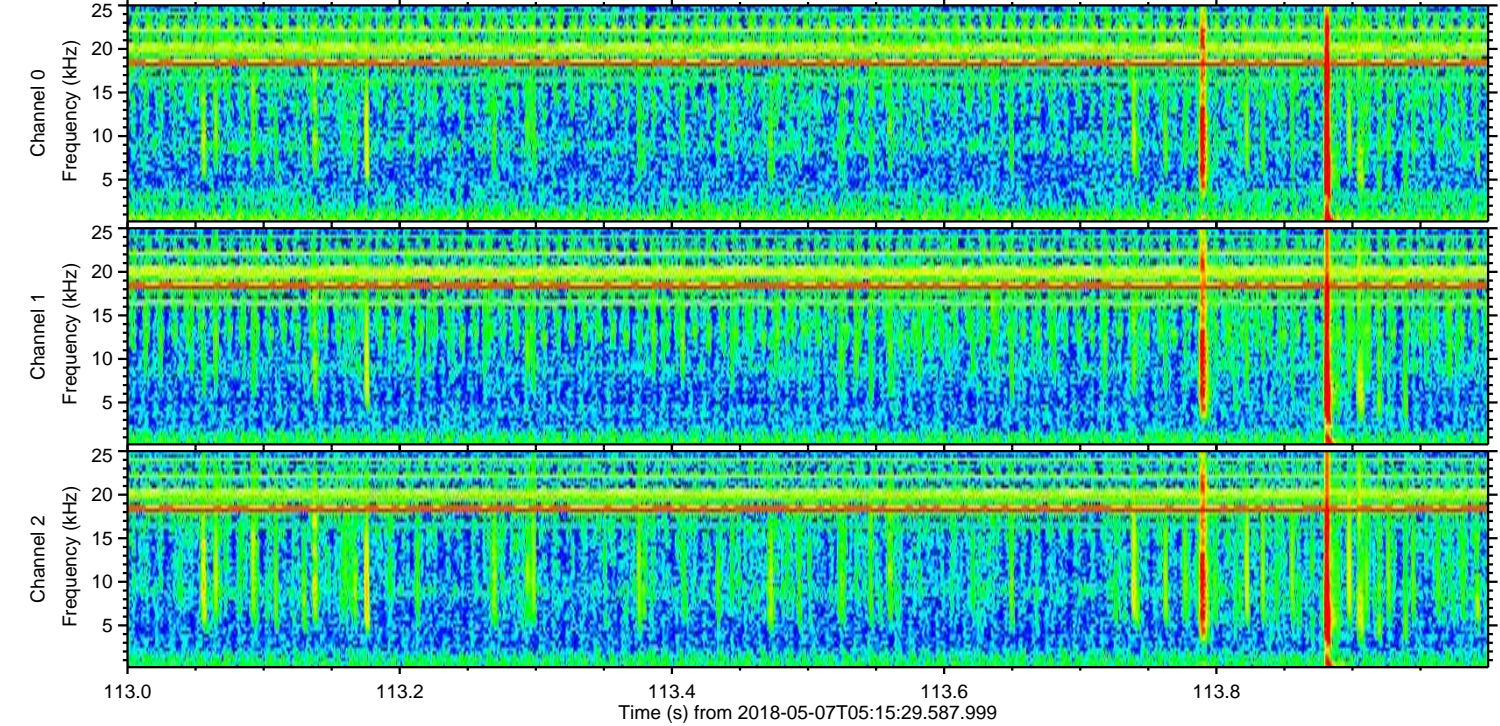
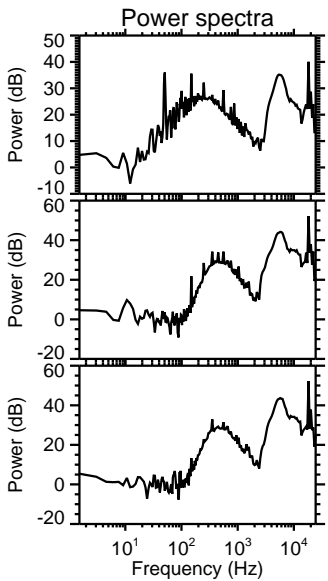
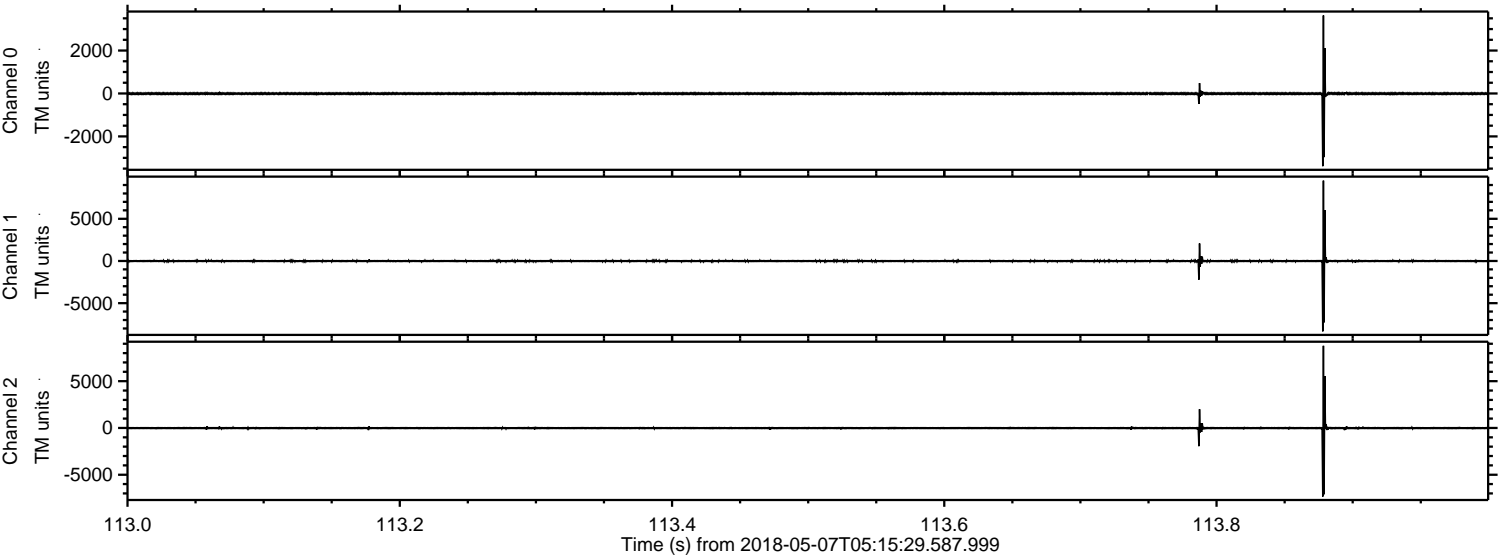
ELMAVAN 3D WAVEFORMS (Measured data sampled at 50 kHz) 51000 packets of 144 samples from 2018-05-07T05:15:29.587.999. Part 142/147

Processed Mon May 7 07:24:35 2018 by ELM ver.2012-10-06 from 001__elm20180507_051528__dat00.bin



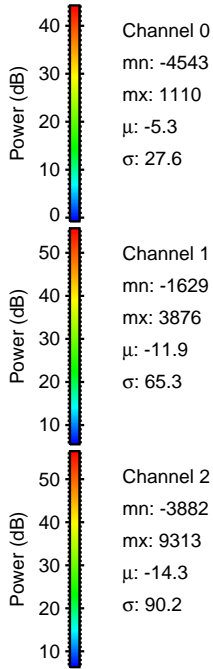
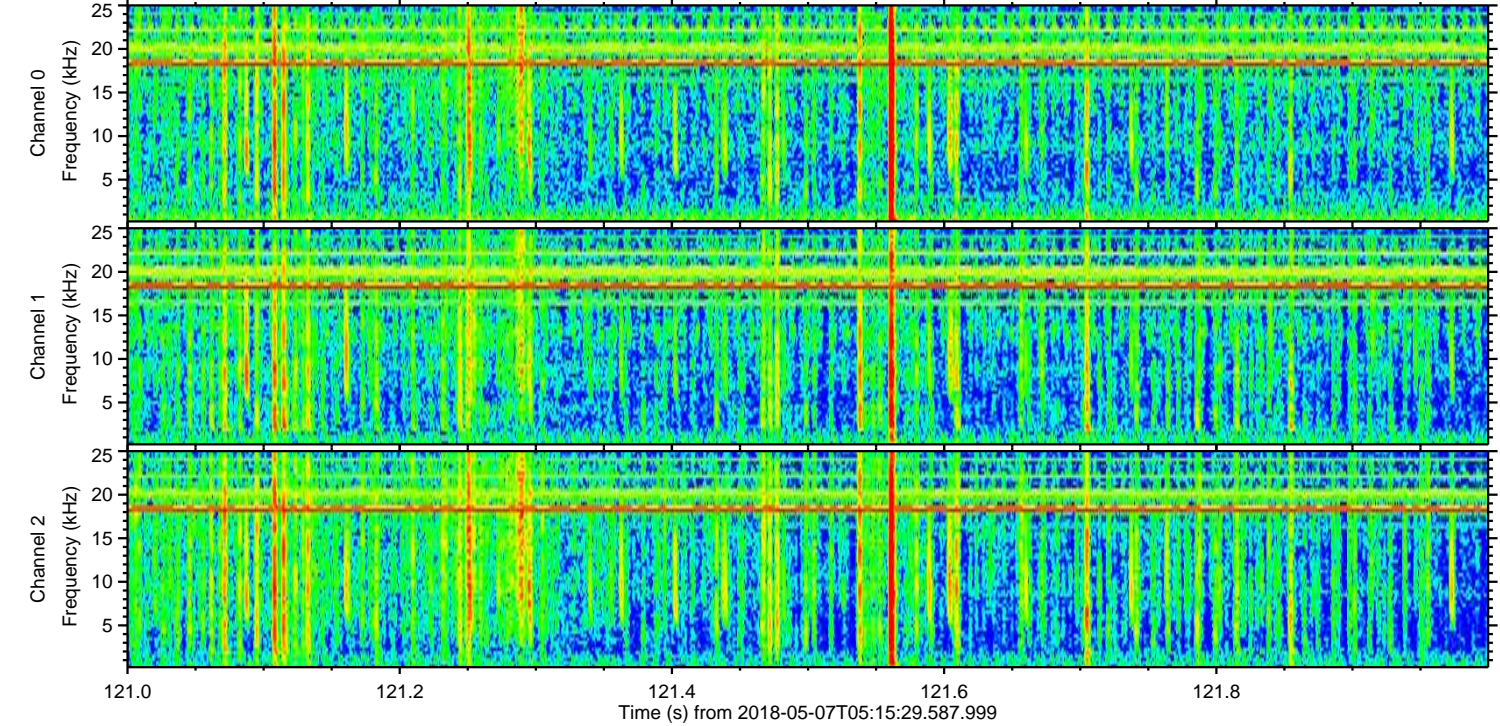
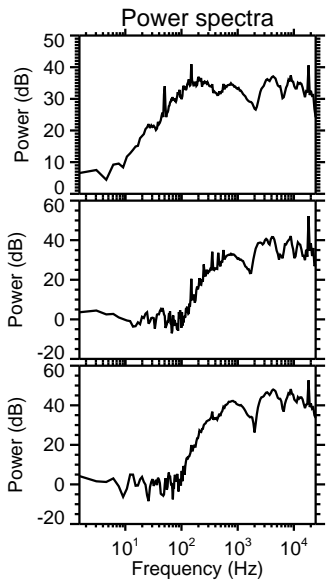
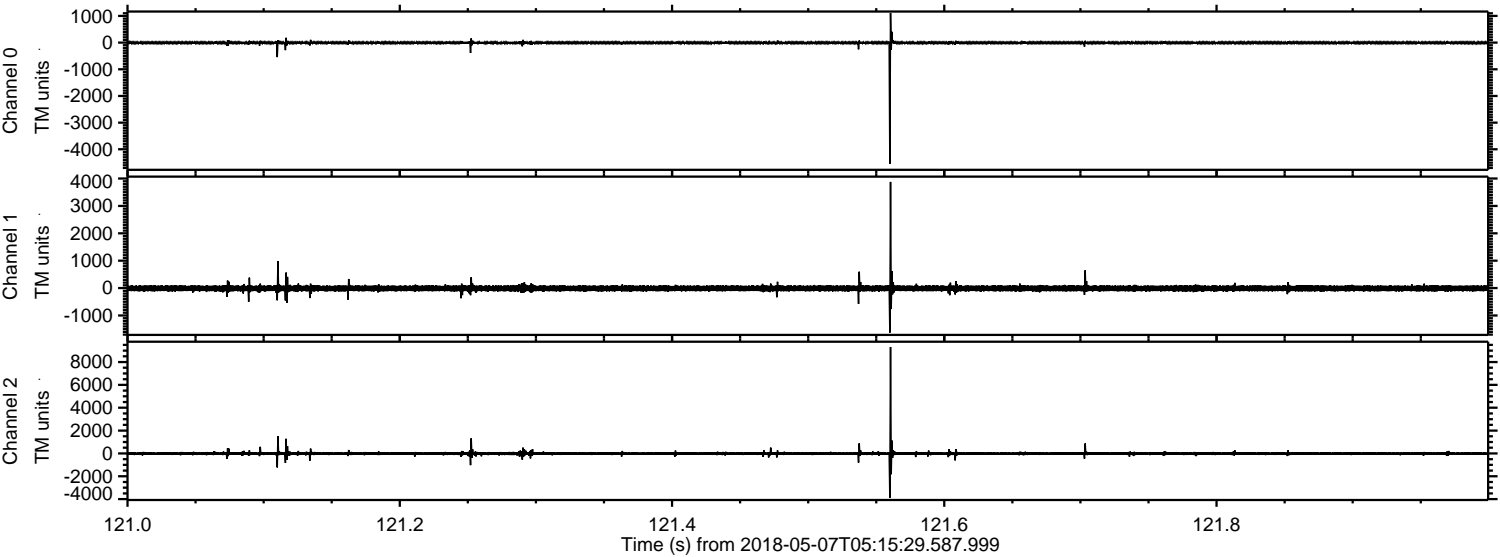
ELMAVAN 3D WAVEFORMS (Measured data sampled at 50 kHz) 51000 packets of 144 samples from 2018-05-07T05:15:29.587.999. Part 114/147

Processed Mon May 7 07:24:36 2018 by ELM ver.2012-10-06 from 001__elm20180507_051528__dat00.bin



ELMAVAN 3D WAVEFORMS (Measured data sampled at 50 kHz) 51000 packets of 144 samples from 2018-05-07T05:15:29.587.999. Part 122/147

Processed Mon May 7 07:24:36 2018 by ELM ver.2012-10-06 from 001__elm20180507_051528__dat00.bin

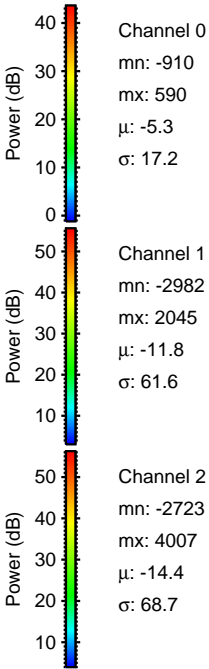
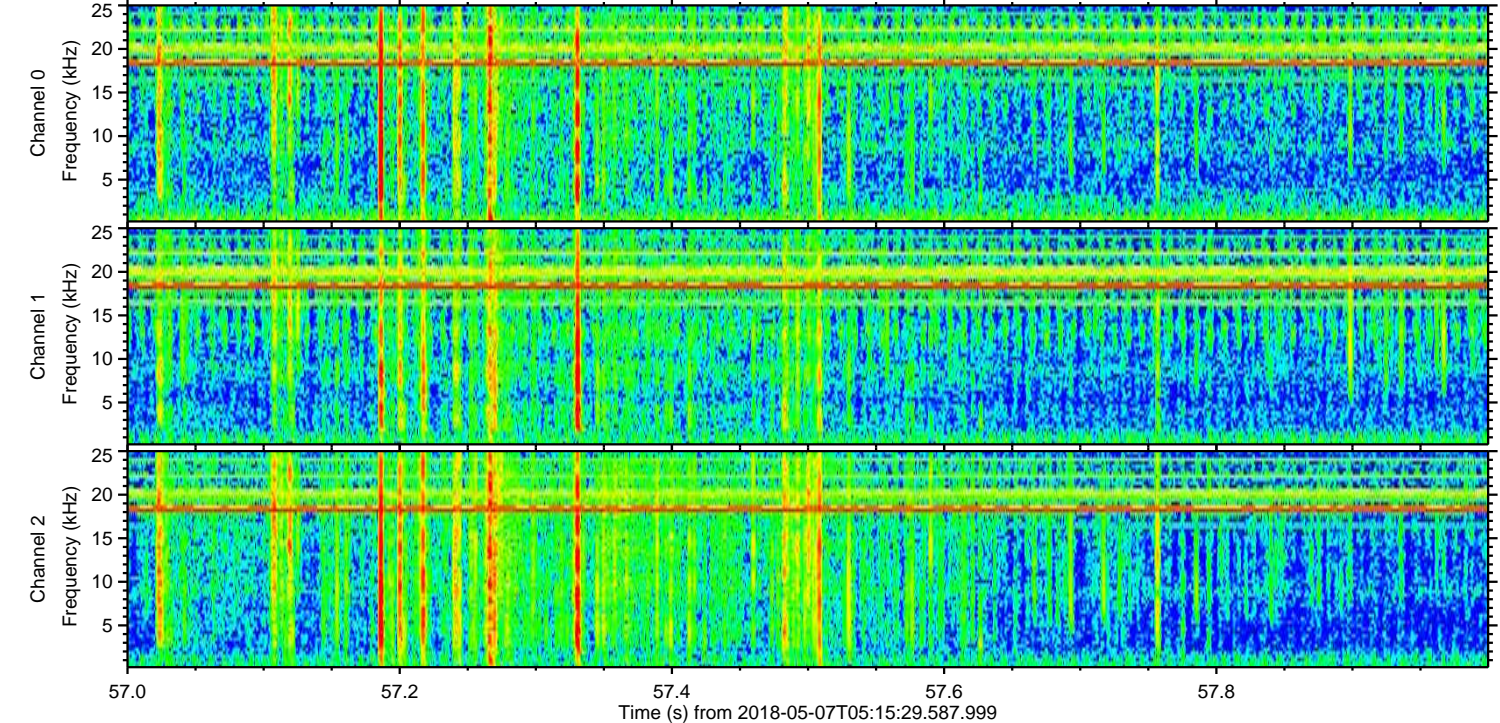
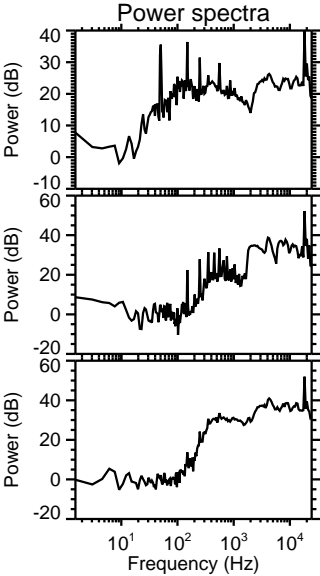
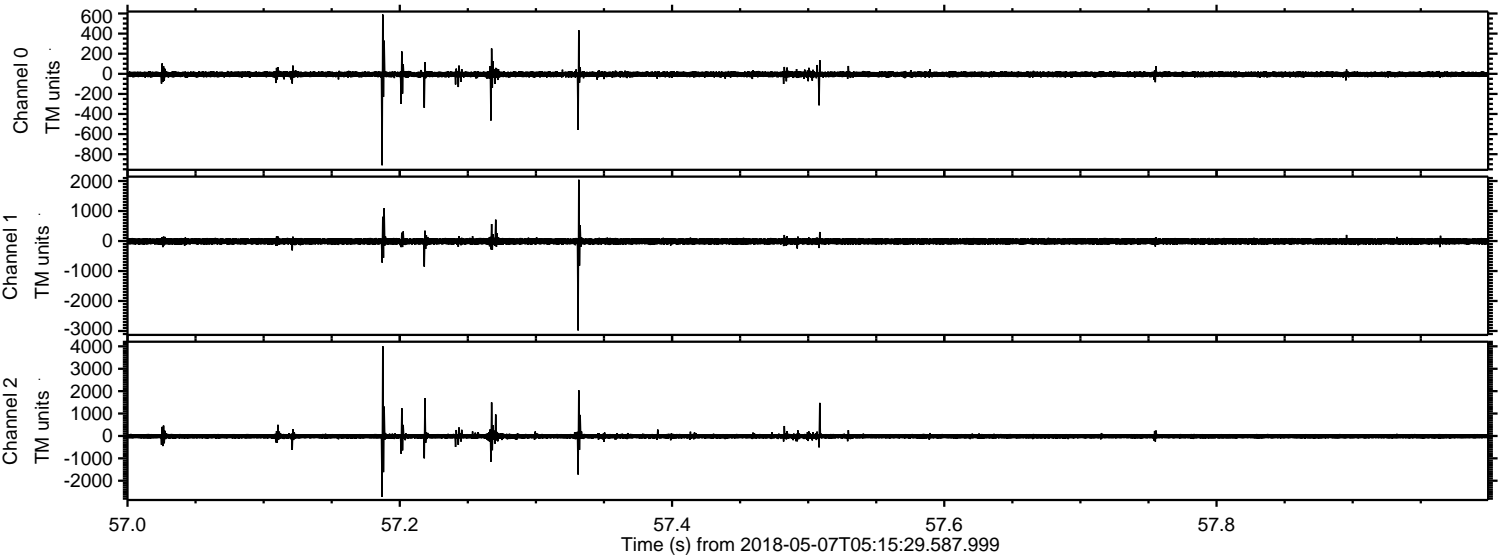


Channel 0
mn: -4543
mx: 1110
 μ : -5.3
 σ : 27.6

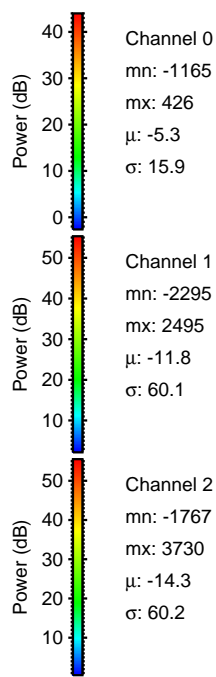
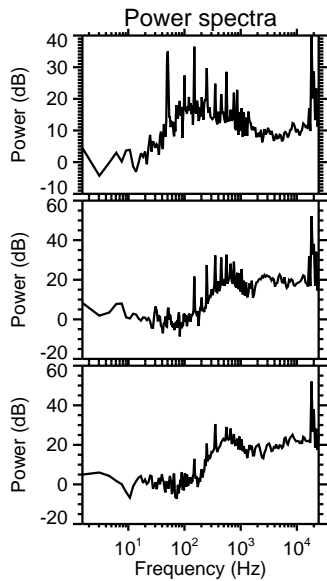
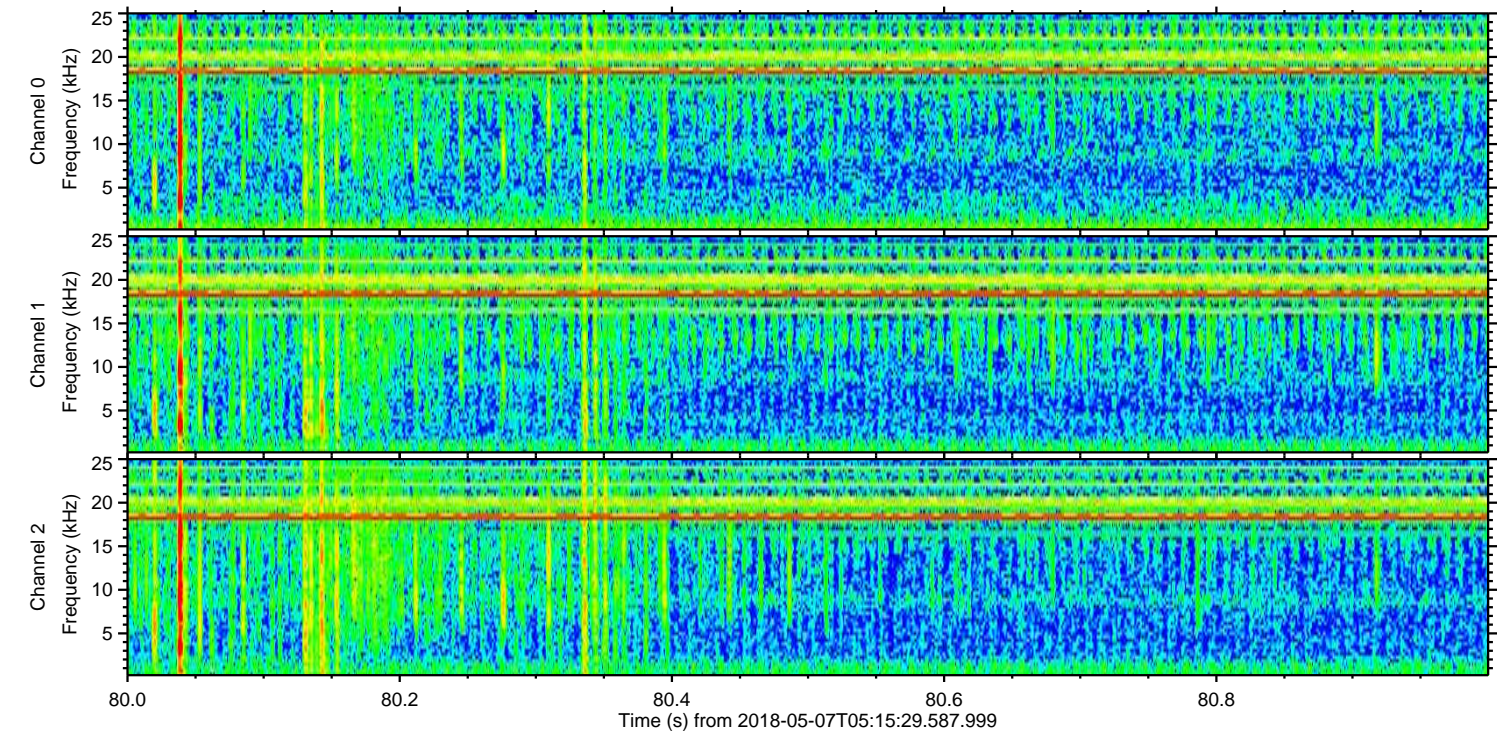
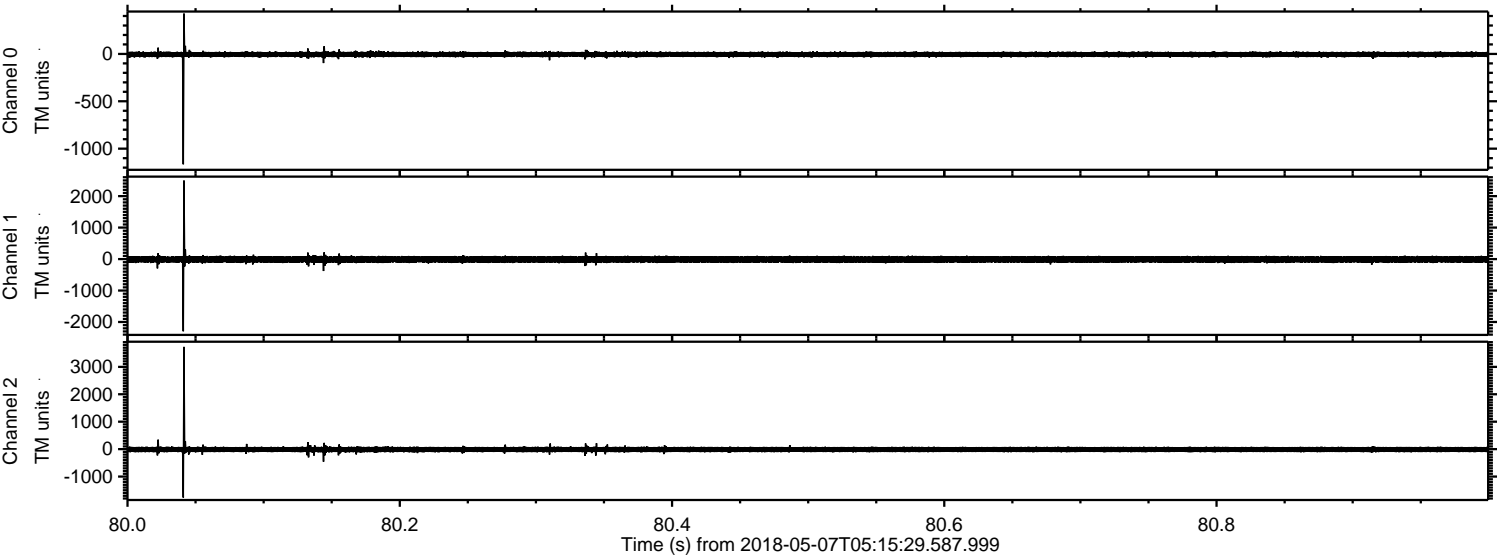
Channel 1
mn: -1629
mx: 3876
 μ : -11.9
 σ : 65.3

Channel 2
mn: -3882
mx: 9313
 μ : -14.3
 σ : 90.2

Processed Mon May 7 07:24:37 2018 by ELM ver.2012-10-06 from 001__elm20180507_051528__dat00.bin



Processed Mon May 7 07:24:37 2018 by ELM ver.2012-10-06 from 001__elm20180507_051528__dat00.bin



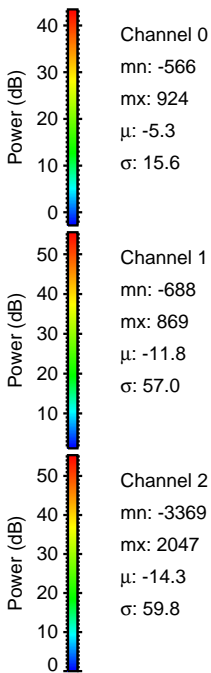
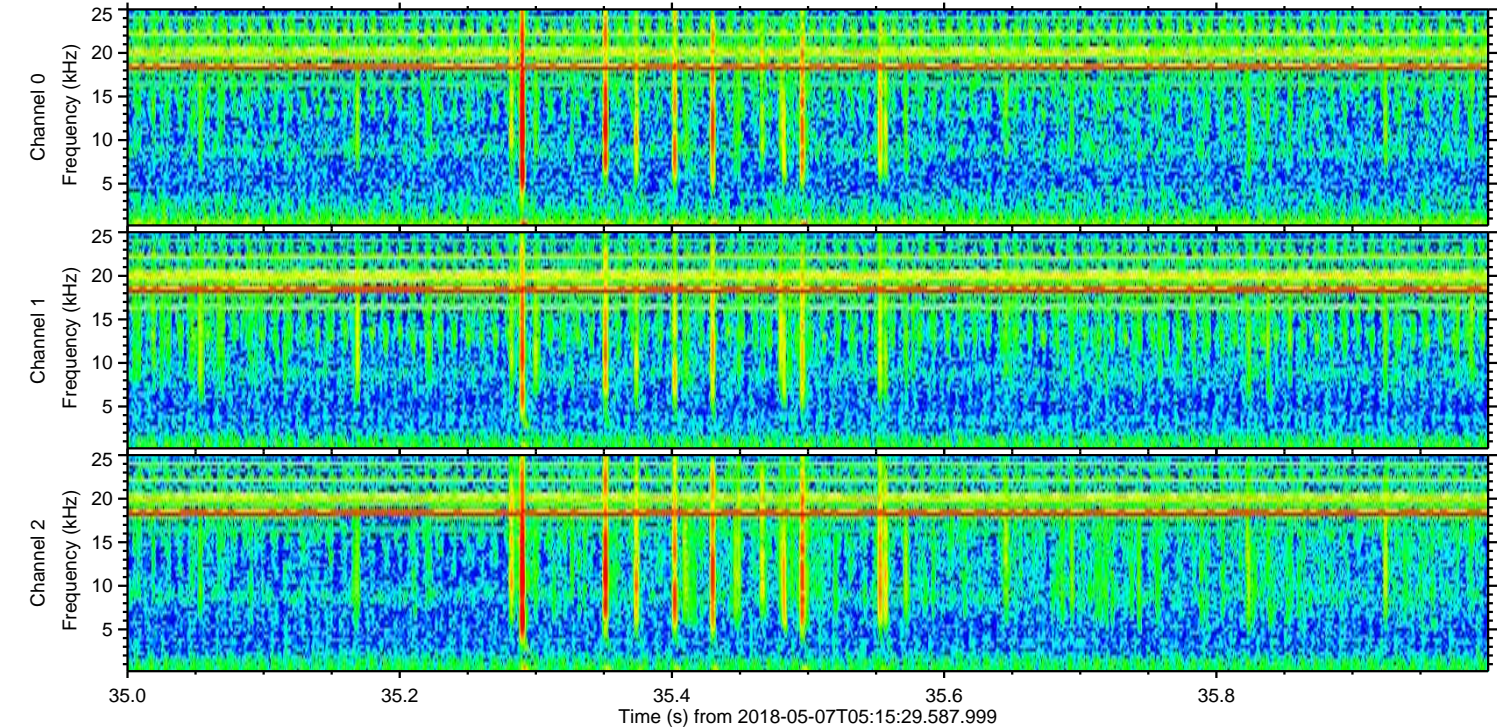
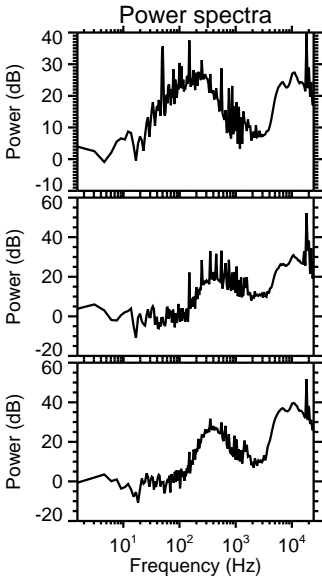
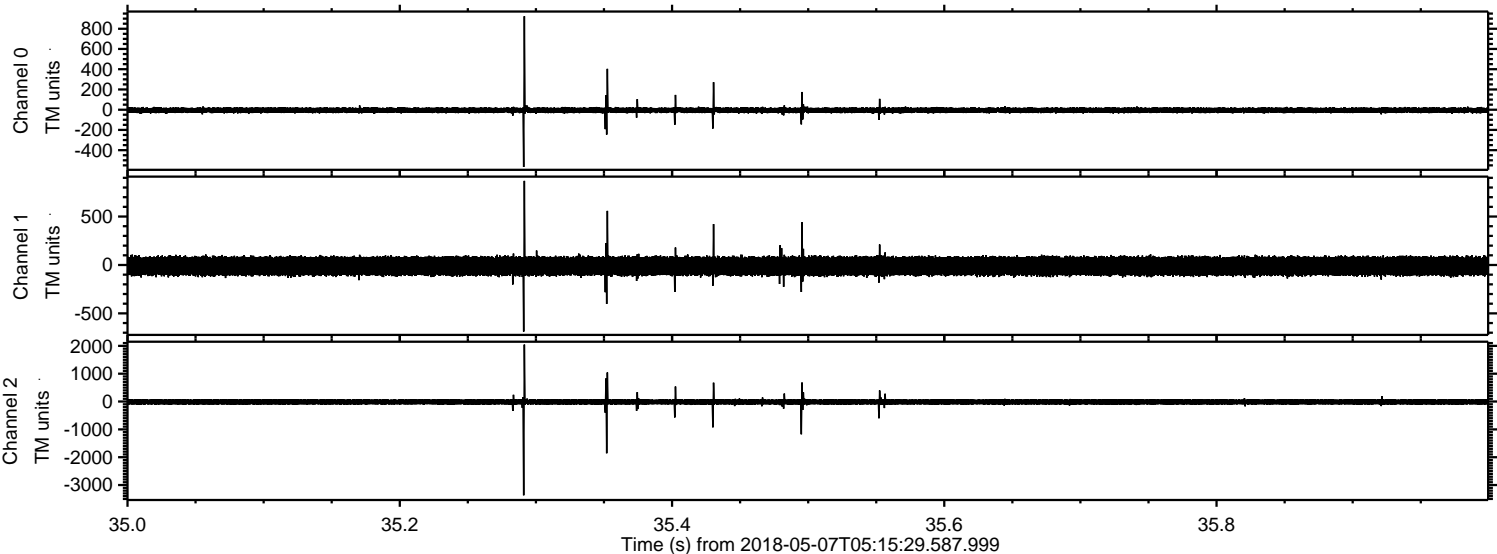
Power spectra

Channel 0
mn: -1165
mx: 426
 μ : -5.3
 σ : 15.9

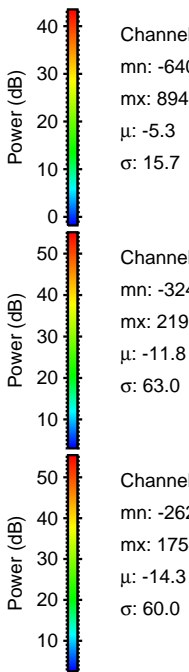
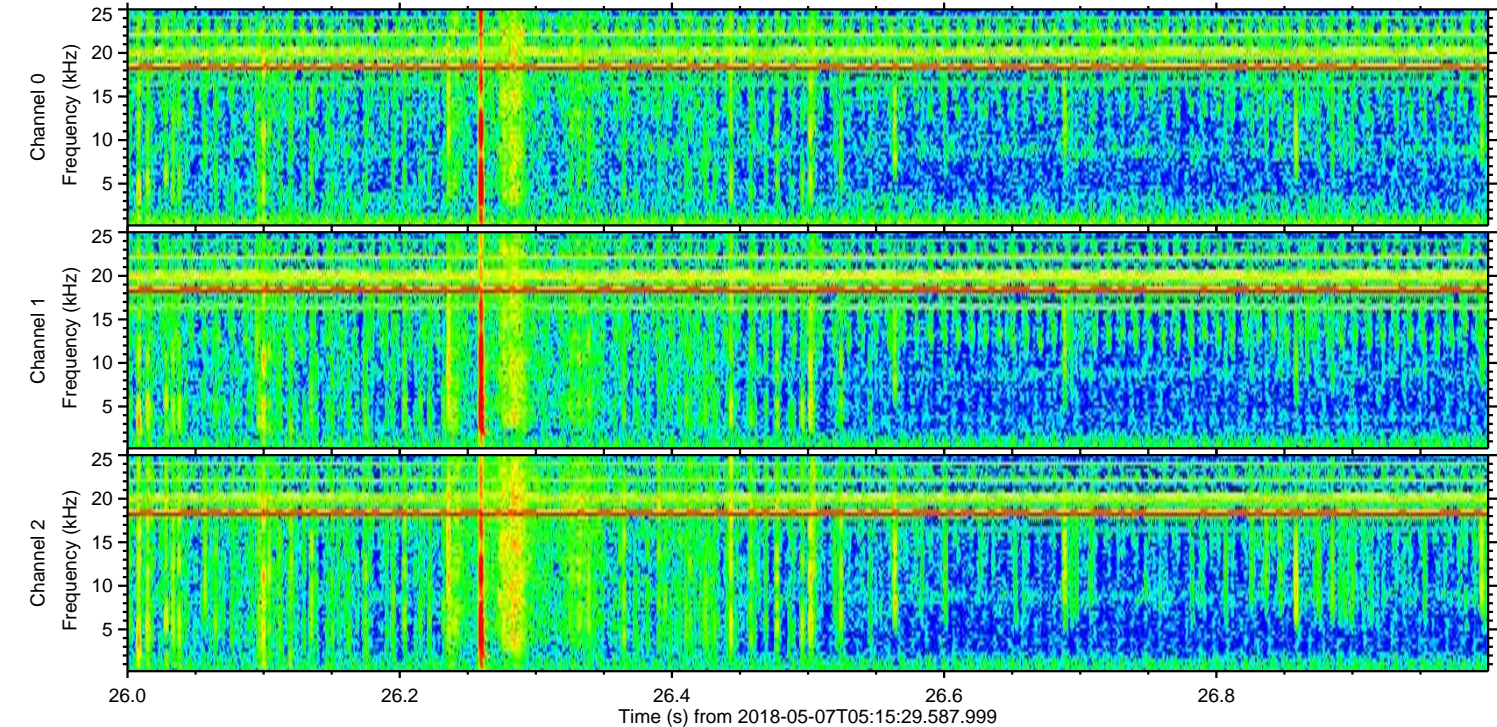
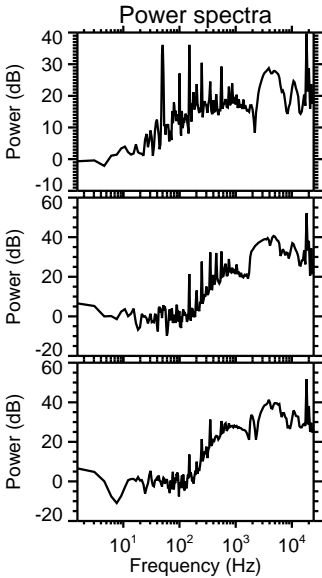
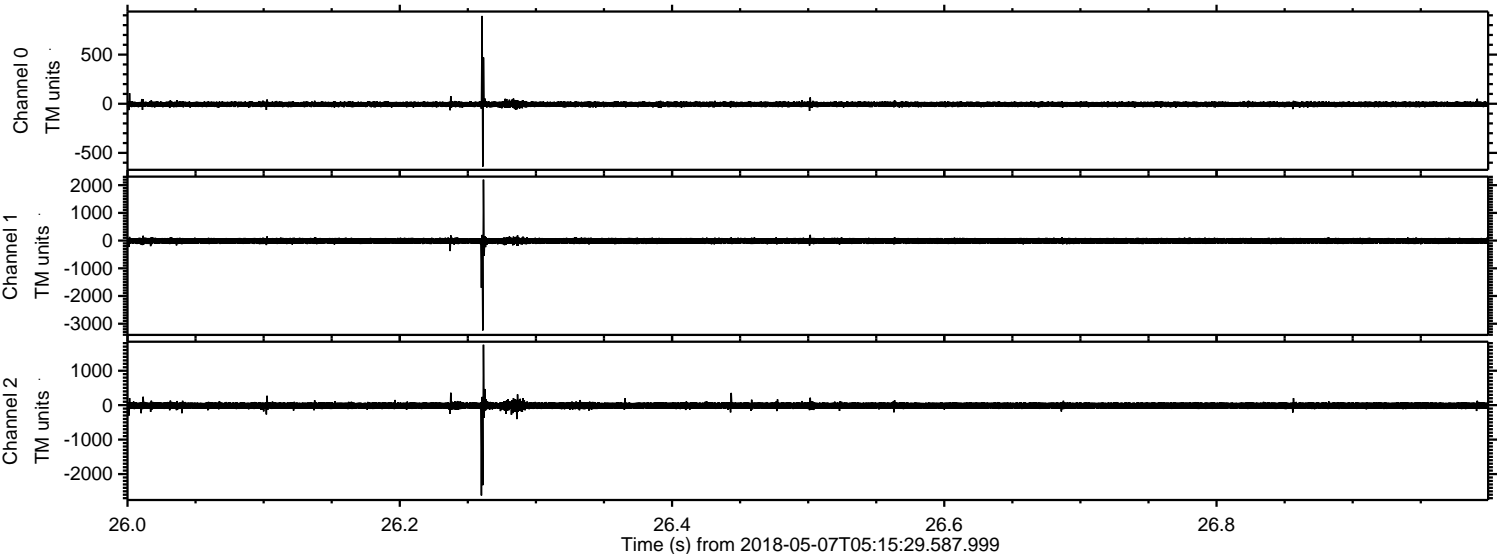
Channel 1
mn: -2295
mx: 2495
 μ : -11.8
 σ : 60.1

Channel 2
mn: -1767
mx: 3730
 μ : -14.3
 σ : 60.2

Processed Mon May 7 07:24:38 2018 by ELM ver.2012-10-06 from 001__elm20180507_051528__dat00.bin



Processed Mon May 7 07:24:39 2018 by ELM ver.2012-10-06 from 001__elm20180507_051528__dat00.bin

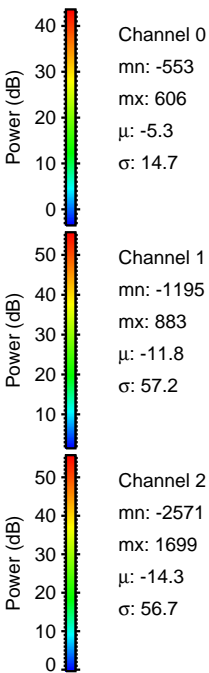
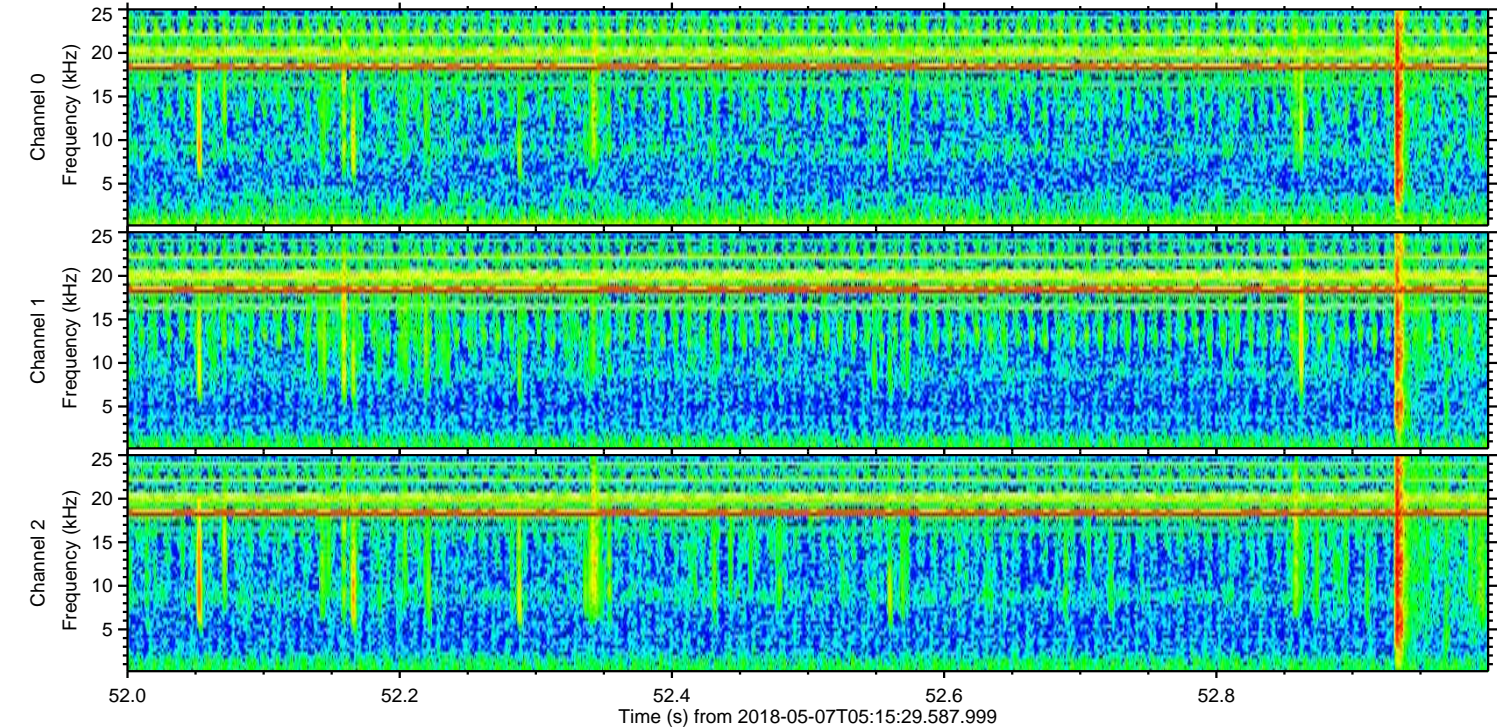
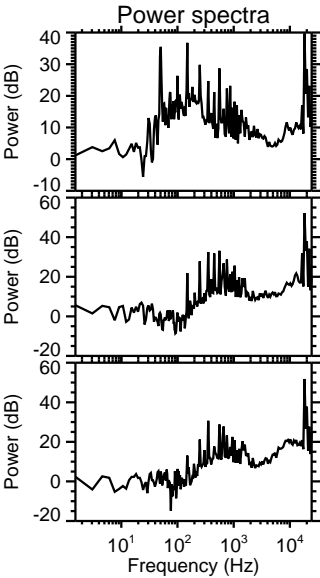
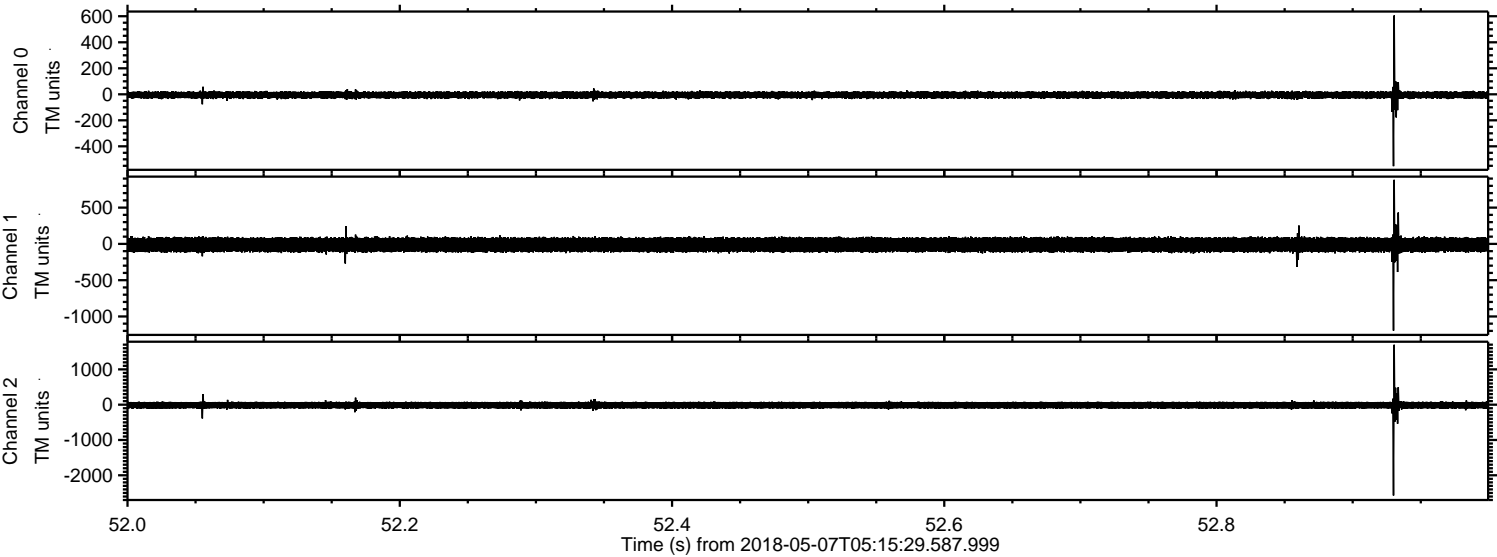


Channel 0
mn: -640
mx: 894
 μ : -5.3
 σ : 15.7

Channel 1
mn: -3243
mx: 2199
 μ : -11.8
 σ : 63.0

Channel 2
mn: -2622
mx: 1754
 μ : -14.3
 σ : 60.0

Processed Mon May 7 07:24:39 2018 by ELM ver.2012-10-06 from 001__elm20180507_051528__dat00.bin



Processed Mon May 7 07:24:40 2018 by ELM ver.2012-10-06 from 001__elm20180507_051528__dat00.bin

