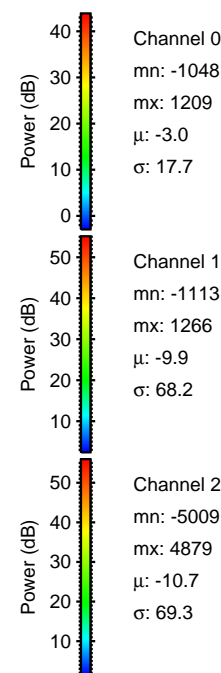
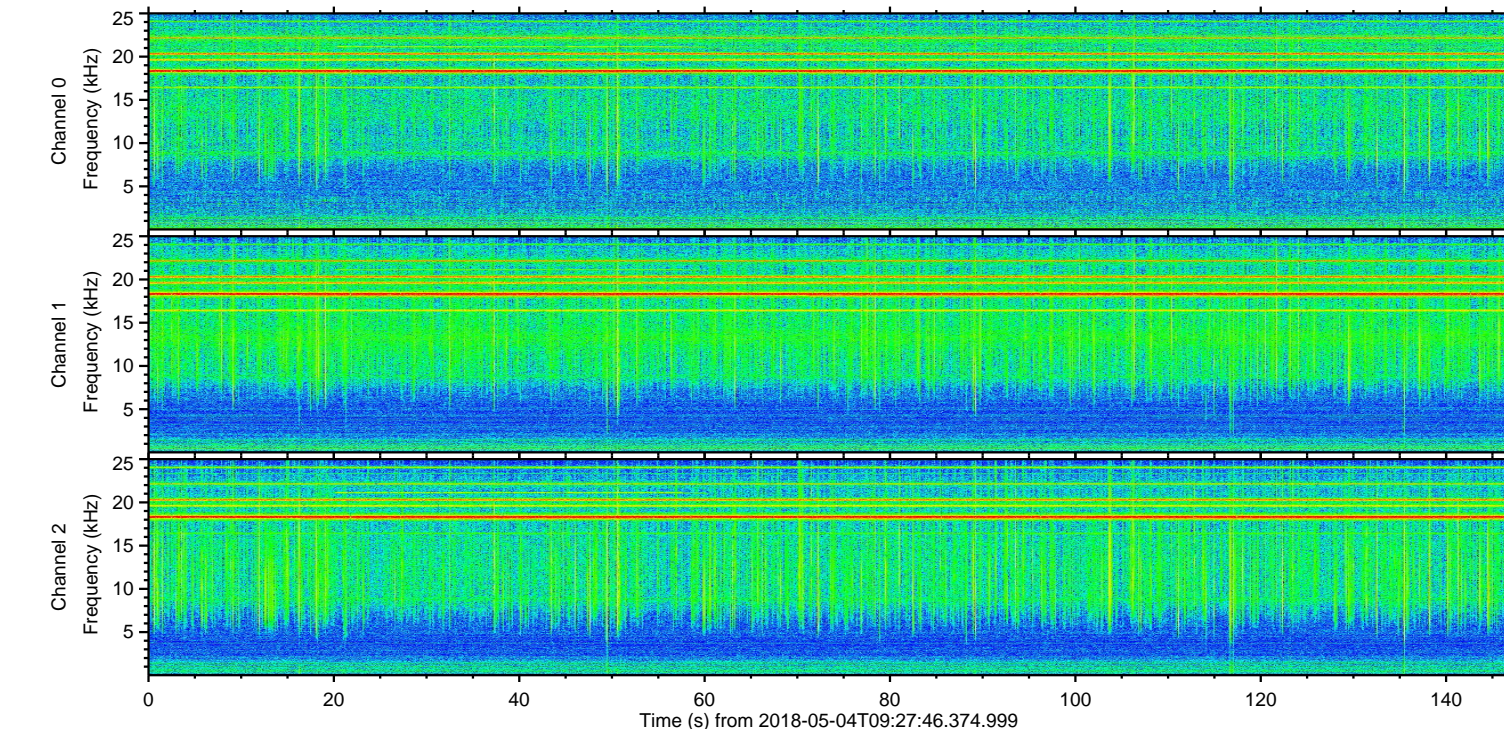
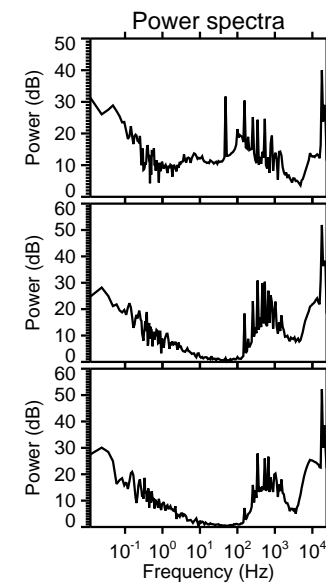
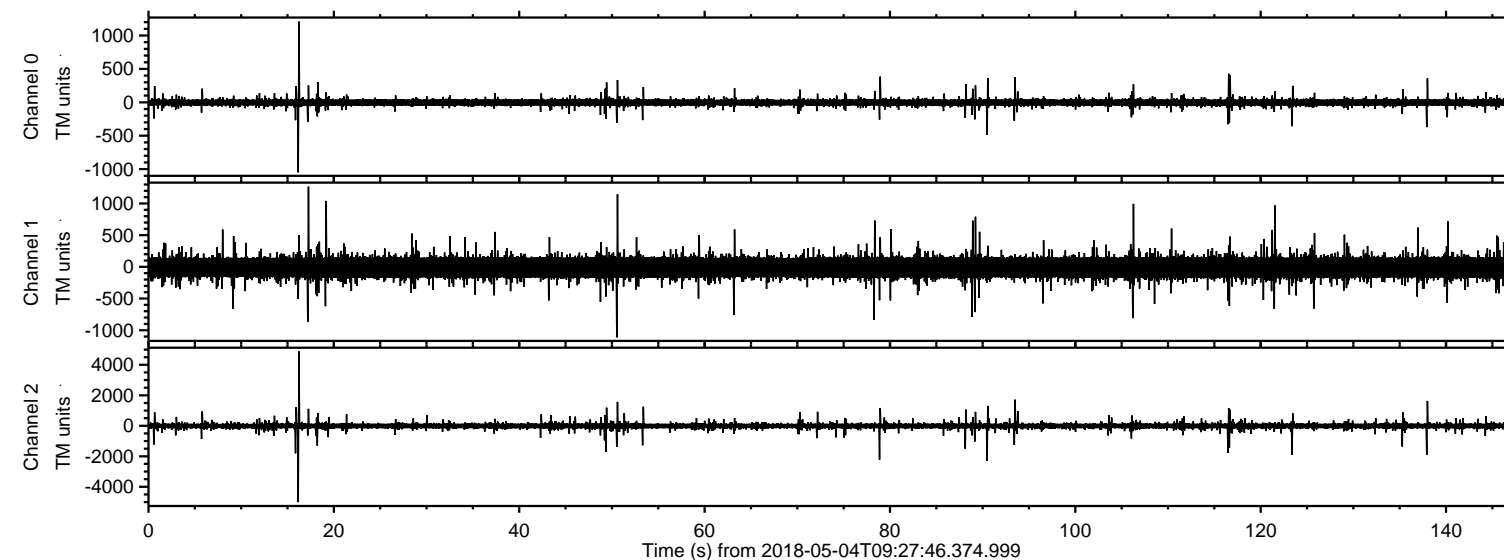


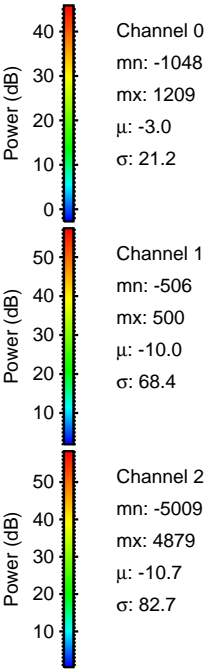
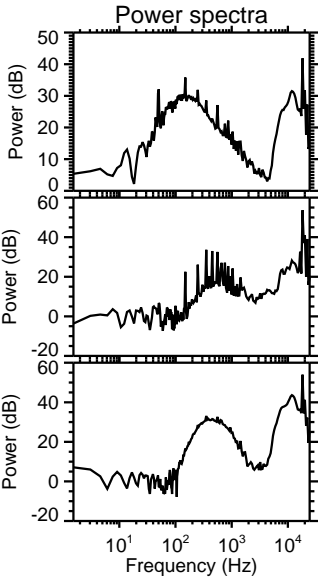
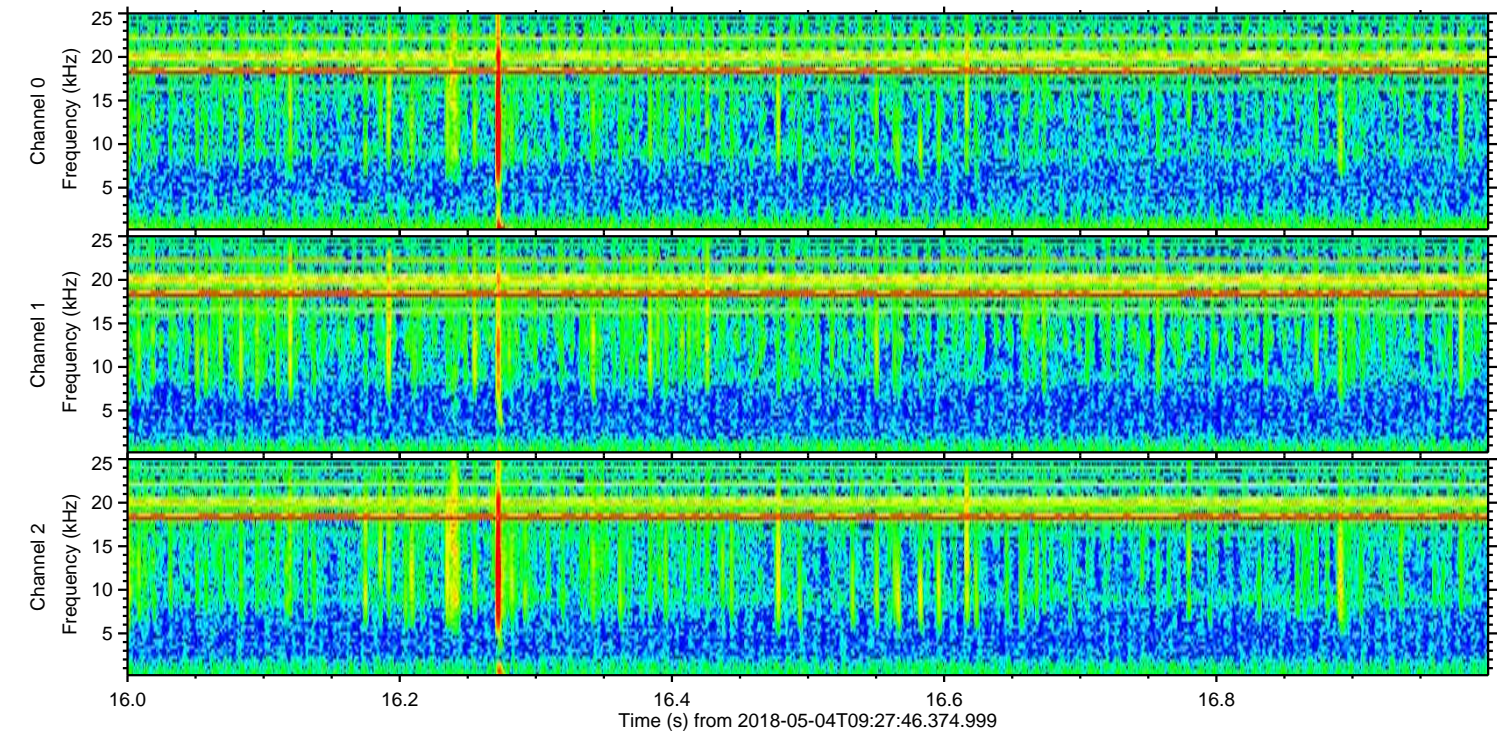
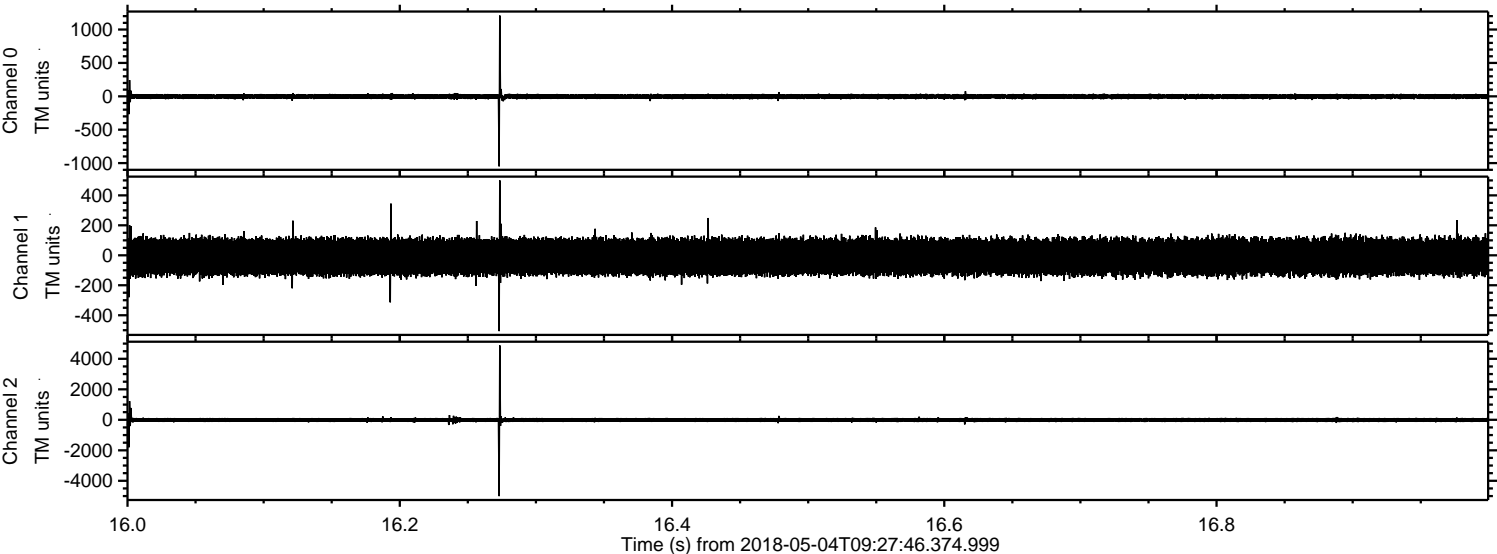
ELMAVAN 3D WAVEFORMS (Measured data sampled at 50 kHz) 51000 packets of 144 samples from 2018-05-04T09:27:46.374.999.

Processed Fri May 4 11:36:07 2018 by ELM ver.2012-10-06 from 001__elm20180504_092745__dat00.bin

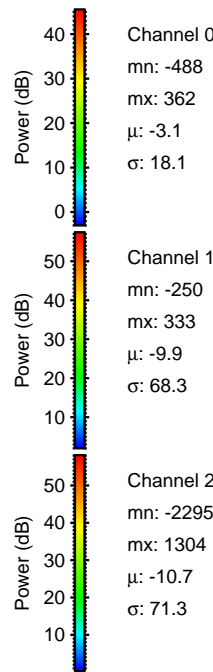
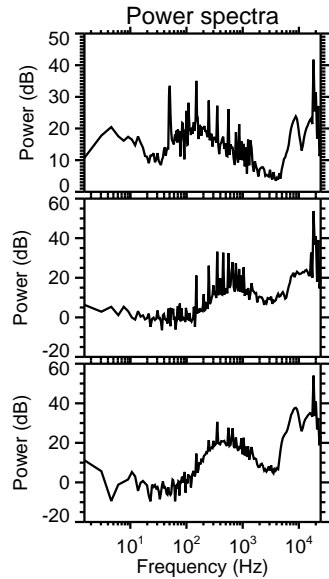
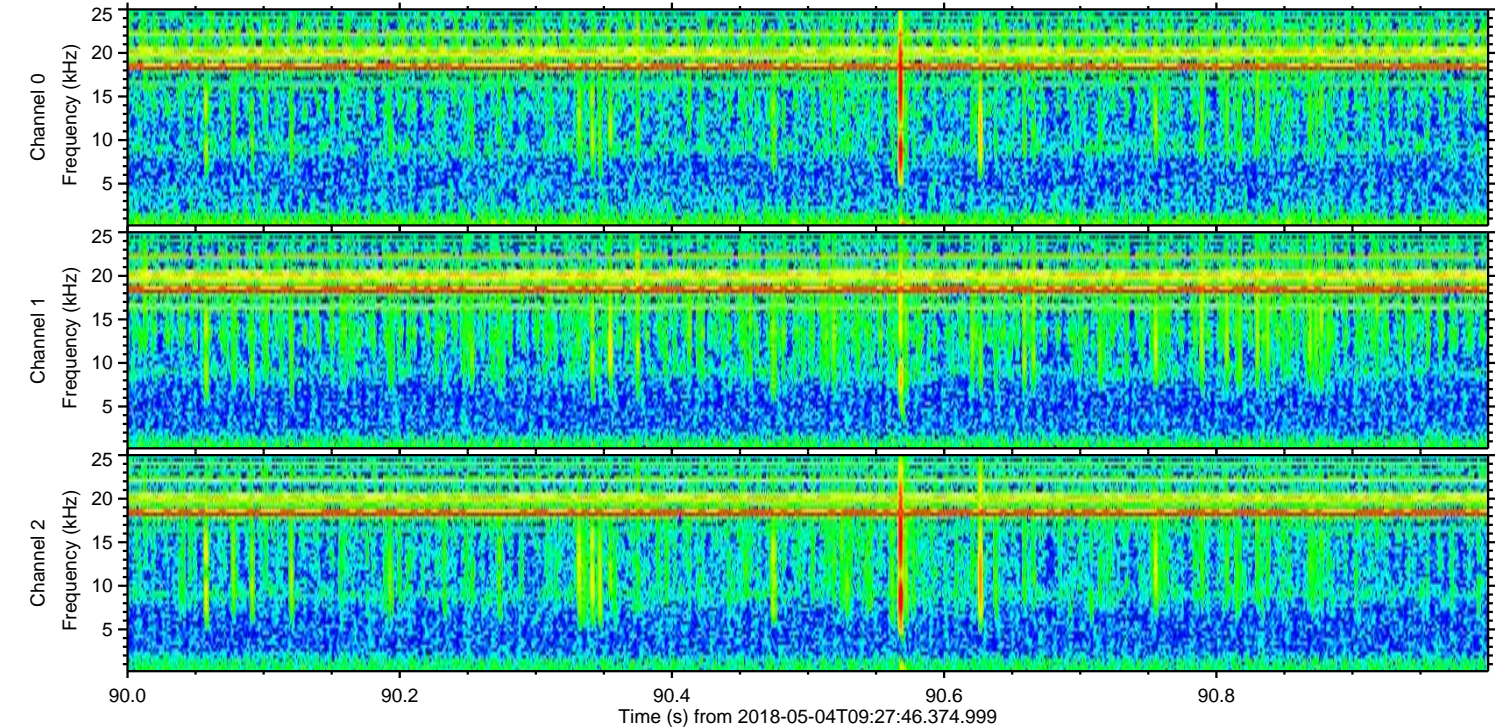
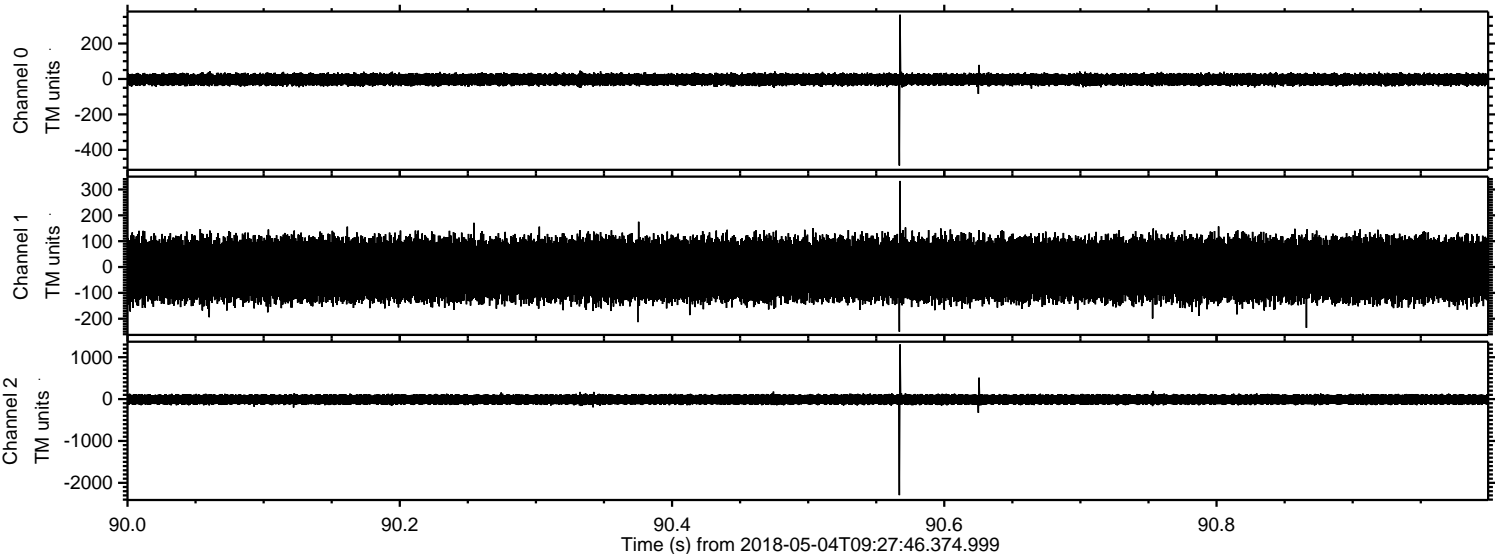


ELMAVAN 3D WAVEFORMS (Measured data sampled at 50 kHz) 51000 packets of 144 samples from 2018-05-04T09:27:46.374.999. Part 17/147

Processed Fri May 4 11:36:13 2018 by ELM ver.2012-10-06 from 001__elm20180504_092745__dat00.bin



Processed Fri May 4 11:36:14 2018 by ELM ver.2012-10-06 from 001__elm20180504_092745__dat00.bin



Power spectra

Channel 0

mn: -488
mx: 362
 μ : -3.1
 σ : 18.1

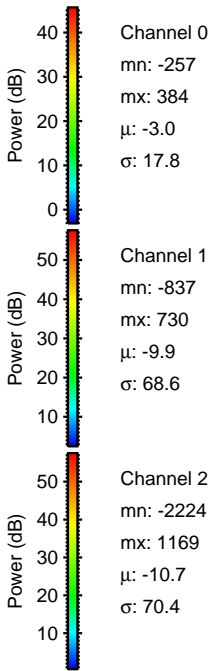
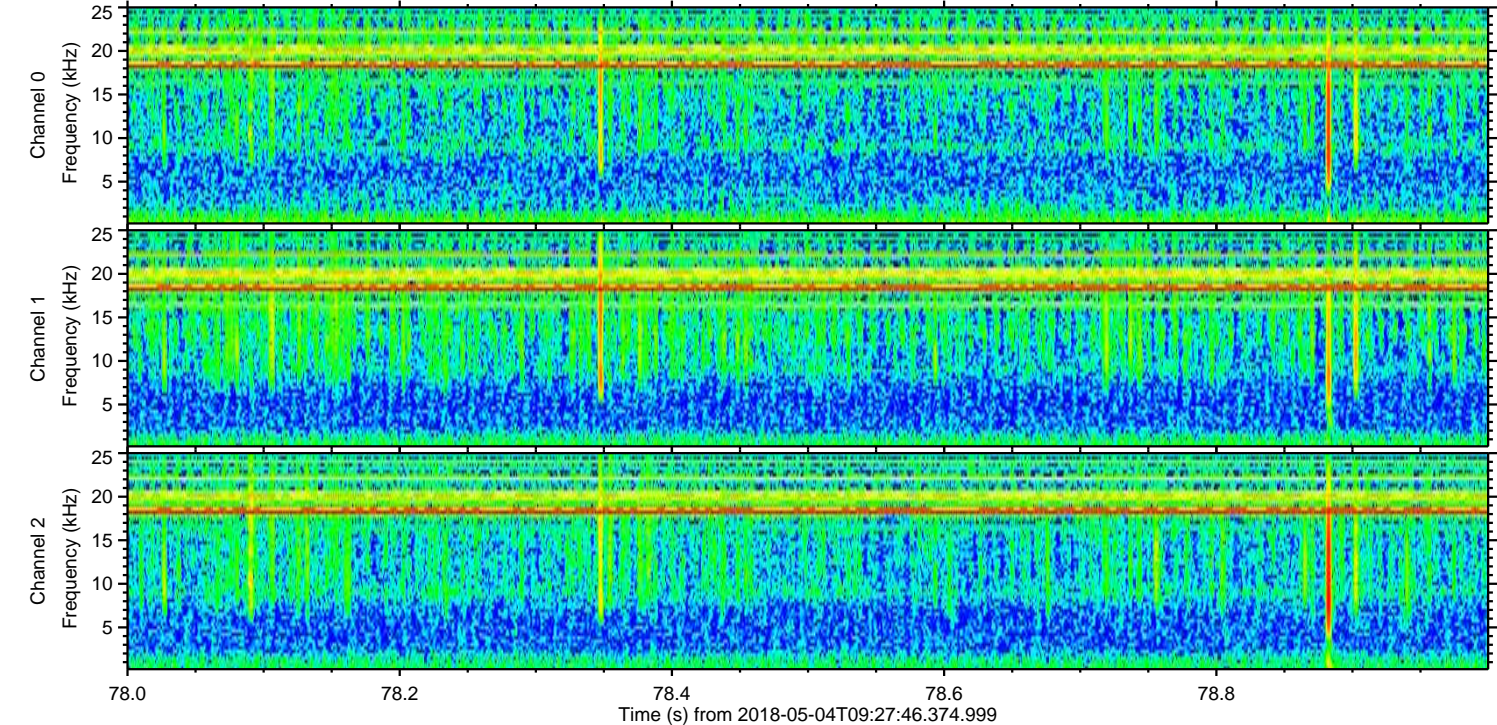
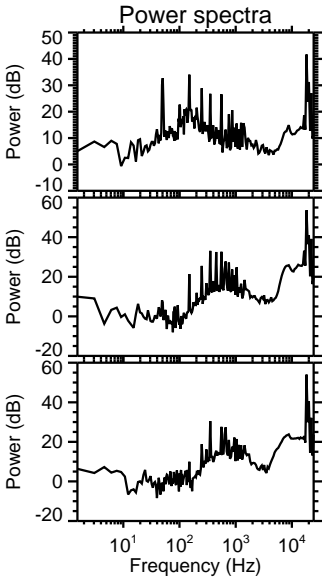
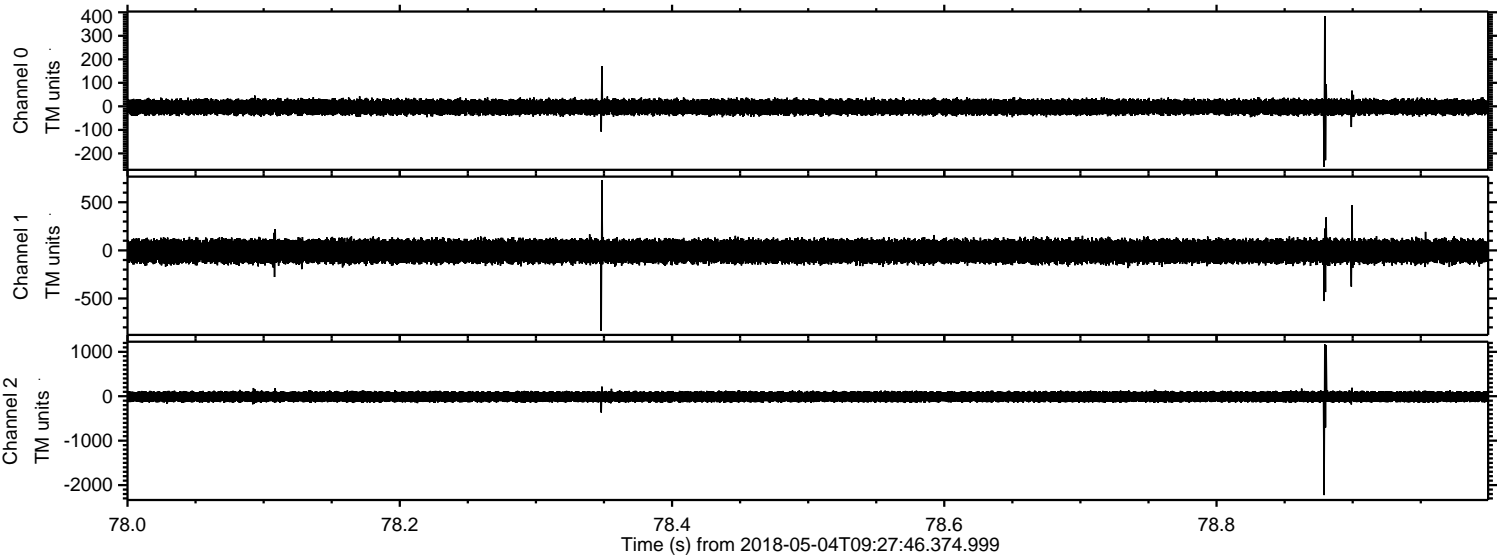
Channel 1

mn: -250
mx: 333
 μ : -9.9
 σ : 68.3

Channel 2

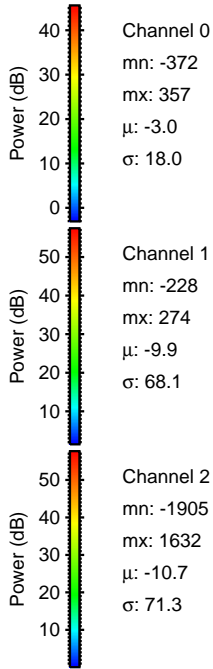
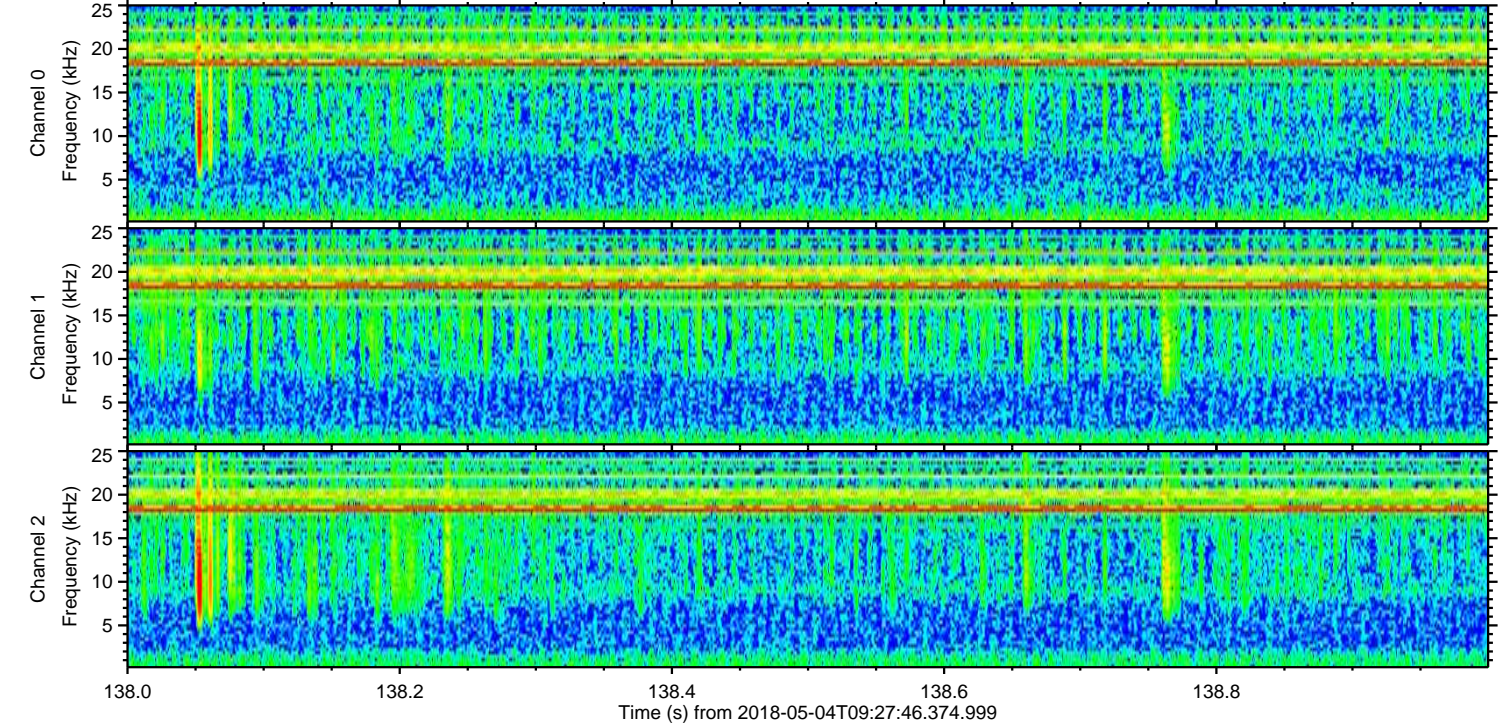
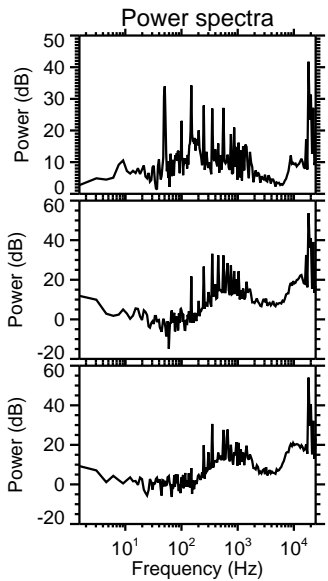
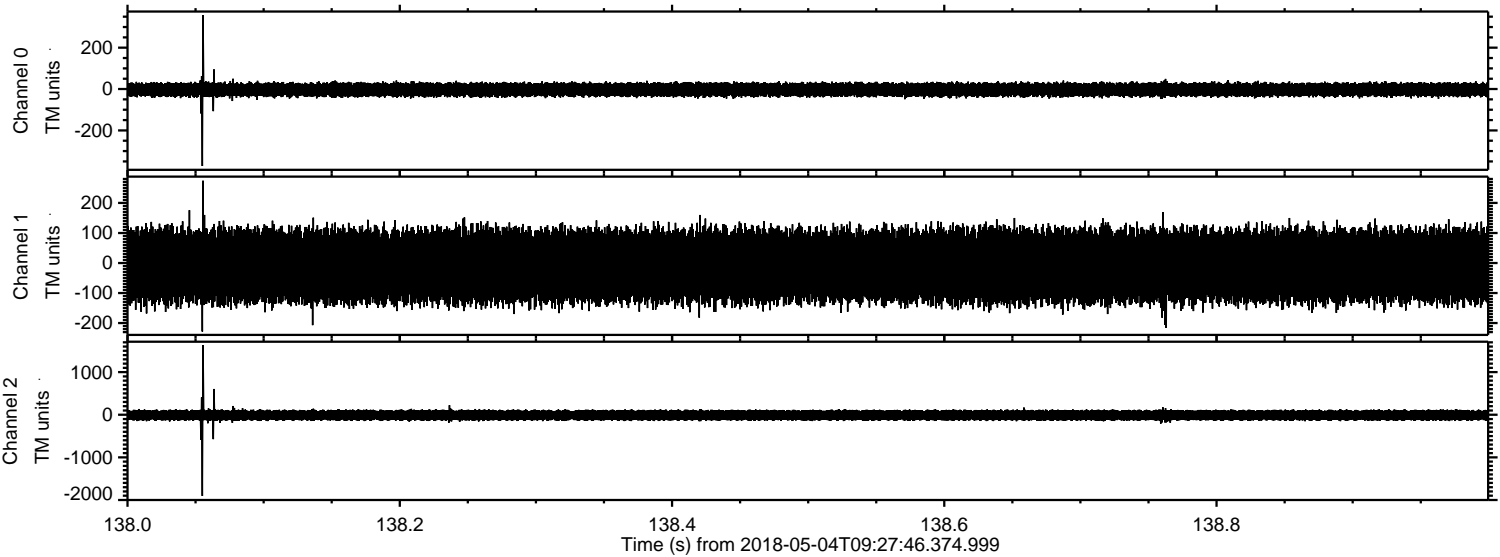
mn: -2295
mx: 1304
 μ : -10.7
 σ : 71.3

Processed Fri May 4 11:36:14 2018 by ELM ver.2012-10-06 from 001__elm20180504_092745__dat00.bin



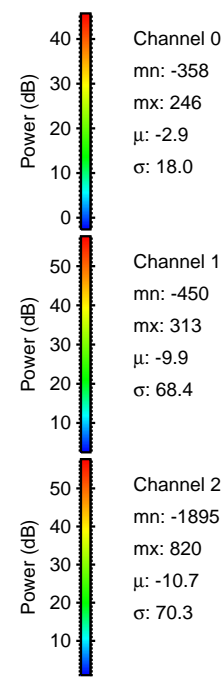
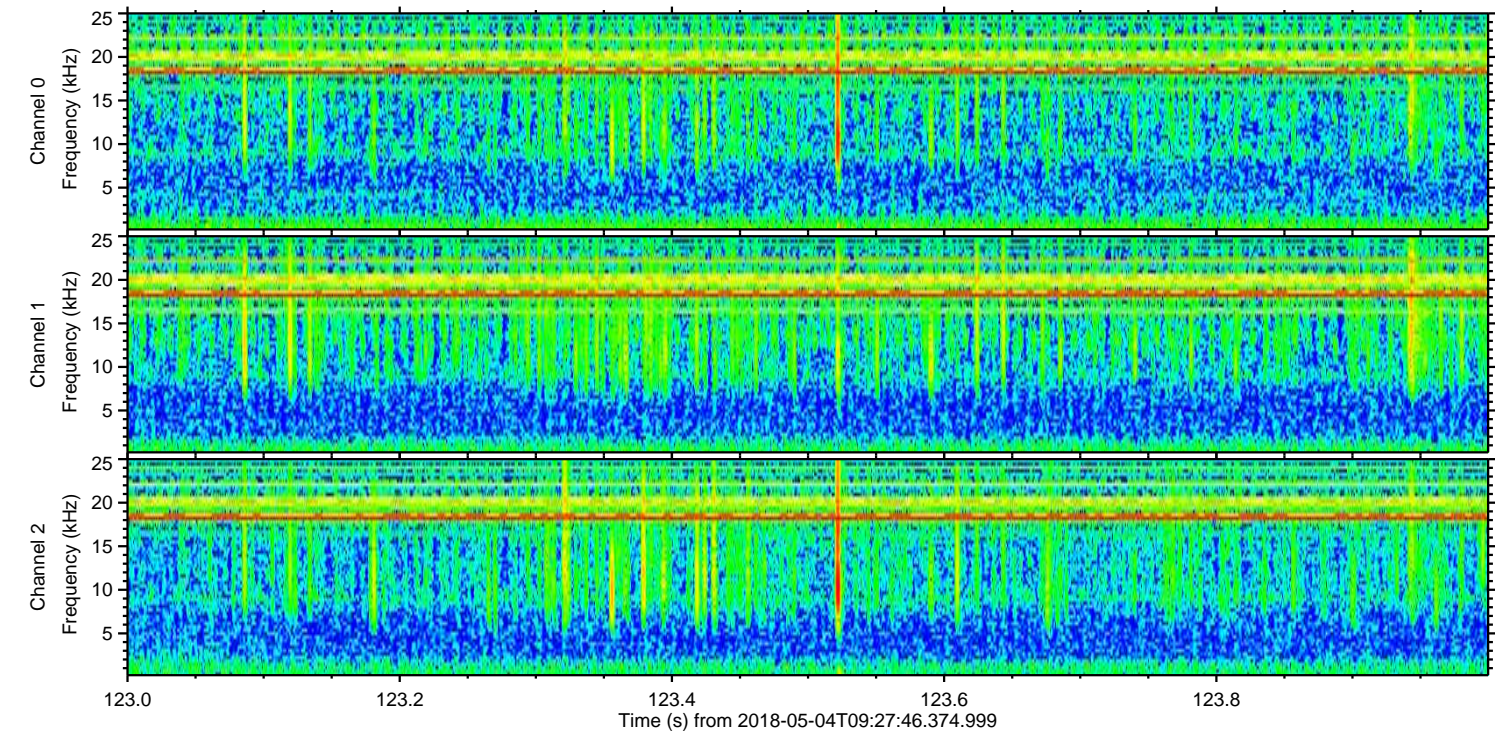
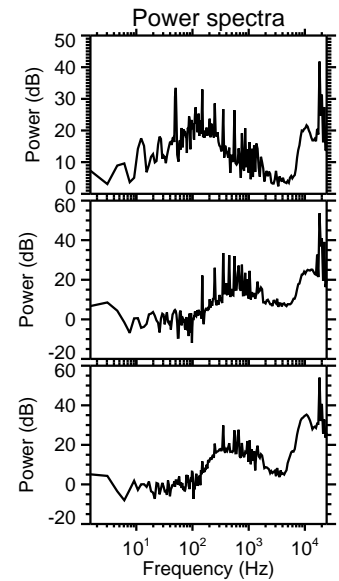
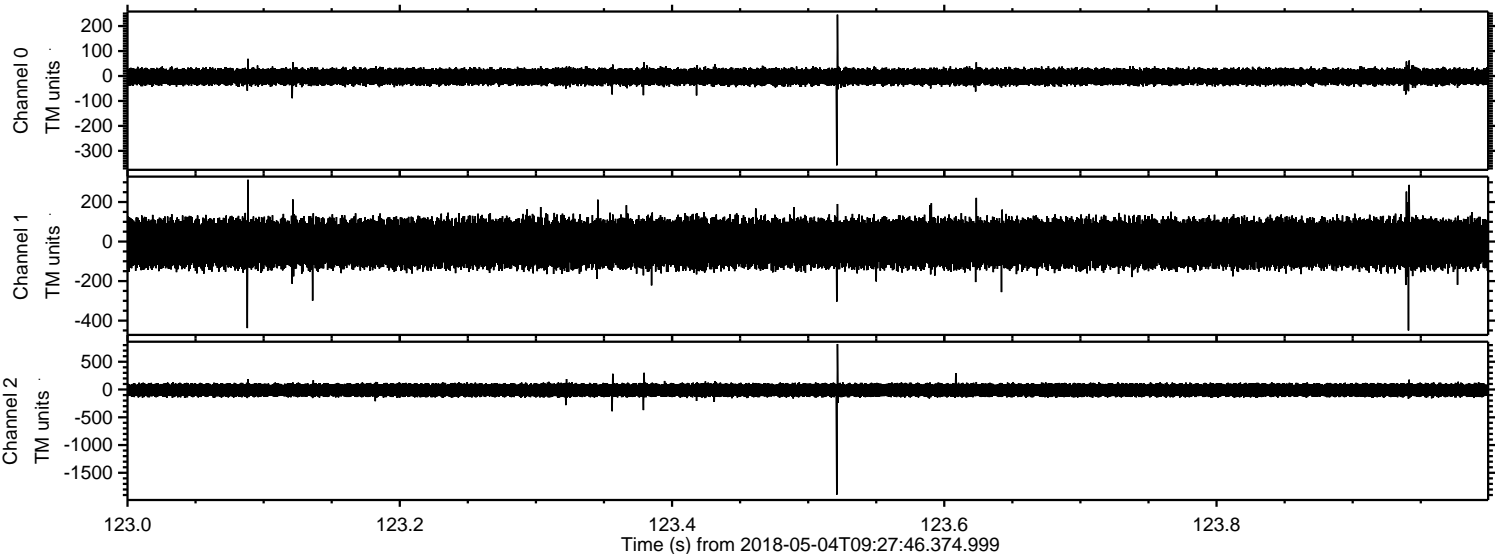
ELMAVAN 3D WAVEFORMS (Measured data sampled at 50 kHz) 51000 packets of 144 samples from 2018-05-04T09:27:46.374.999. Part 139/147

Processed Fri May 4 11:36:15 2018 by ELM ver.2012-10-06 from 001__elm20180504_092745__dat00.bin



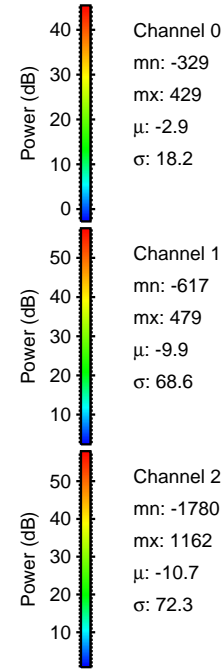
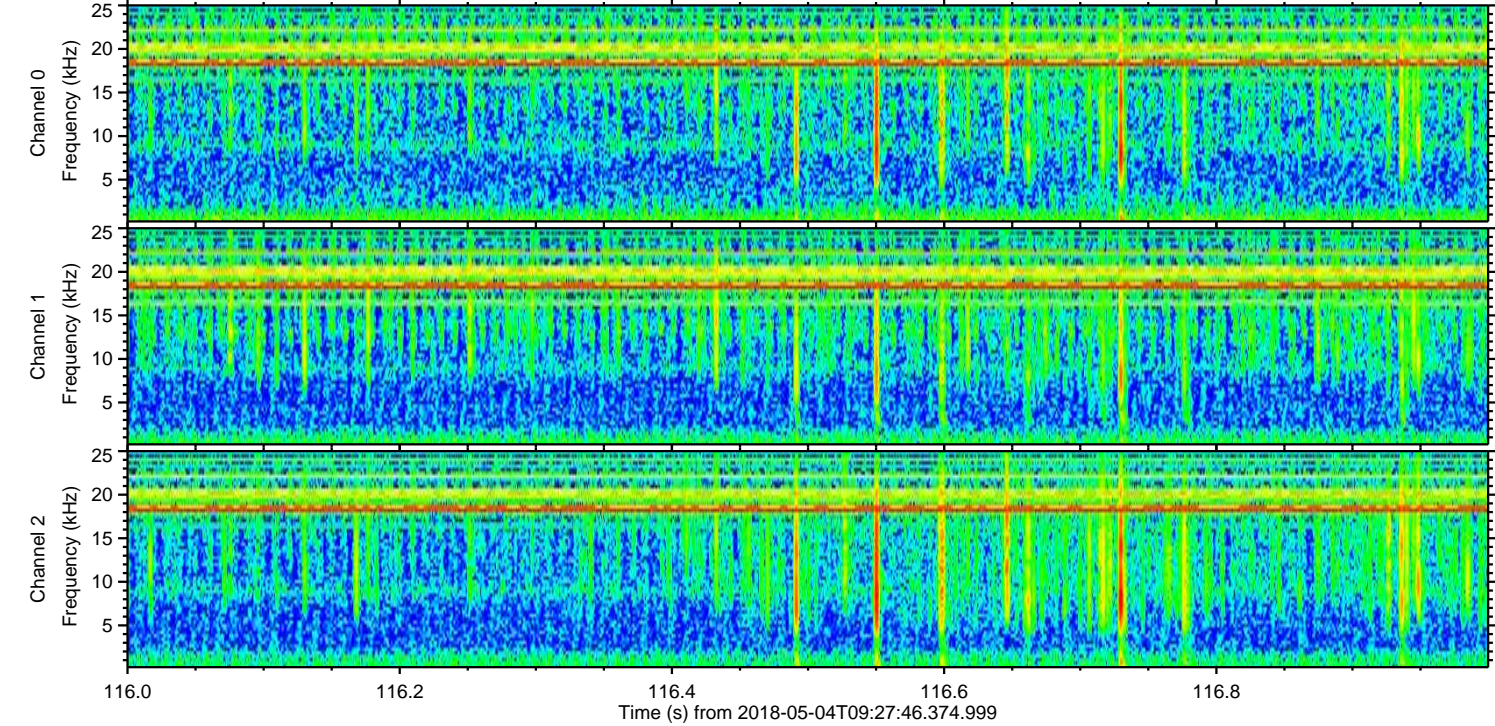
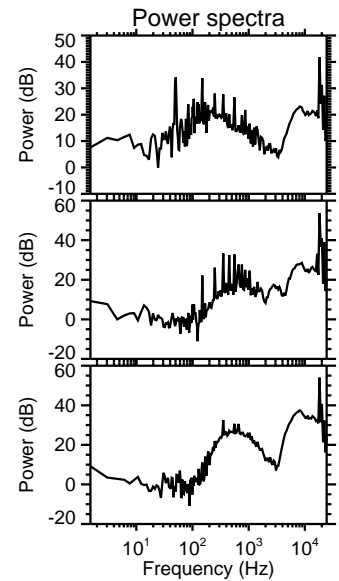
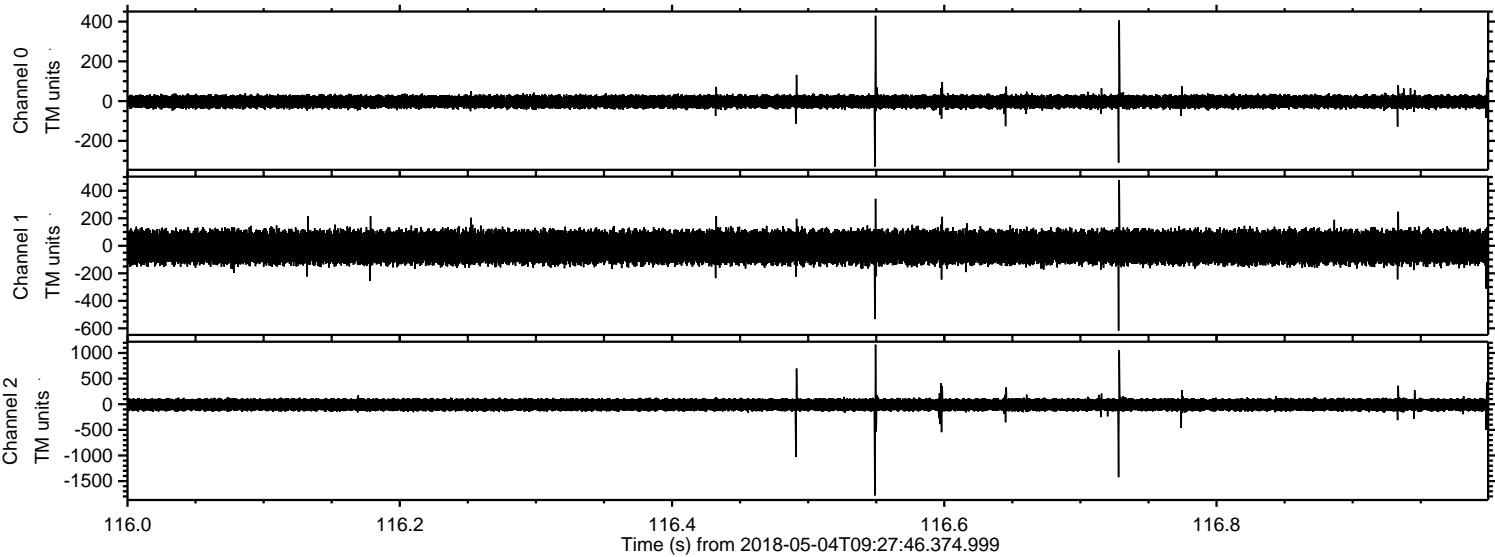
ELMAVAN 3D WAVEFORMS (Measured data sampled at 50 kHz) 51000 packets of 144 samples from 2018-05-04T09:27:46.374.999. Part 124/147

Processed Fri May 4 11:36:16 2018 by ELM ver.2012-10-06 from 001__elm20180504_092745__dat00.bin



ELMAVAN 3D WAVEFORMS (Measured data sampled at 50 kHz) 51000 packets of 144 samples from 2018-05-04T09:27:46.374.999. Part 117/147

Processed Fri May 4 11:36:16 2018 by ELM ver.2012-10-06 from 001__elm20180504_092745__dat00.bin

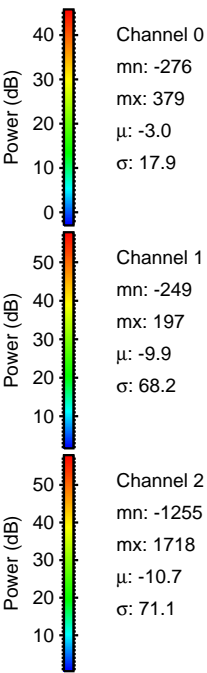
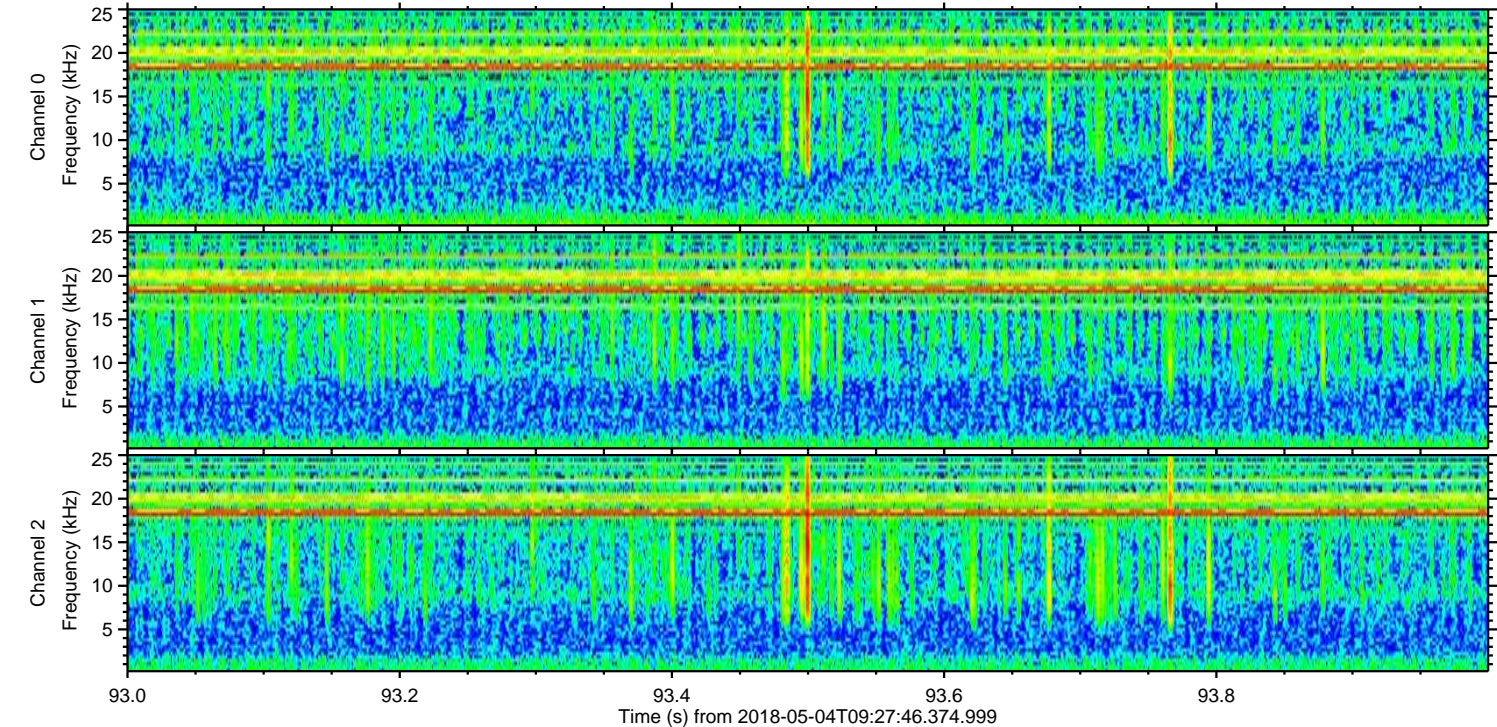
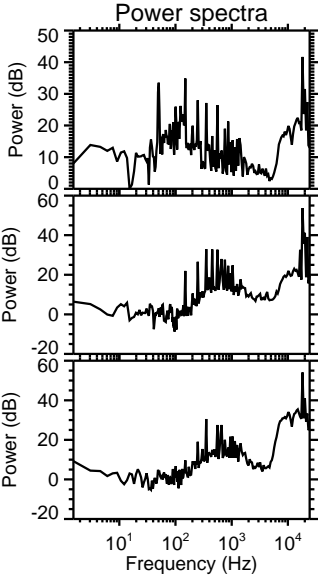
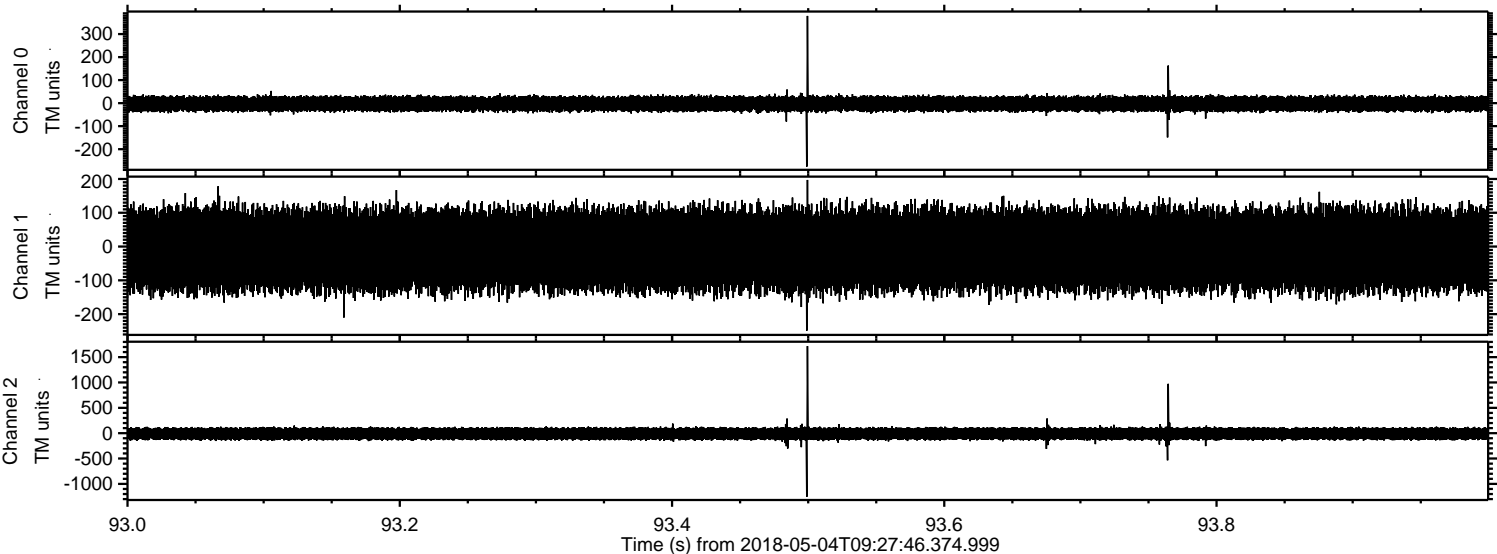


Channel 0
mn: -329
mx: 429
 μ : -2.9
 σ : 18.2

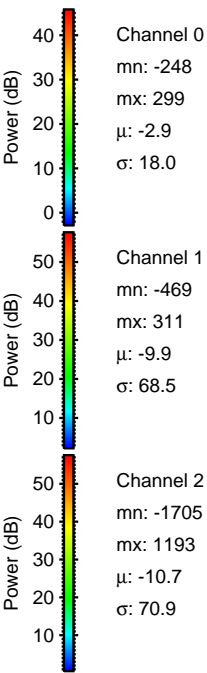
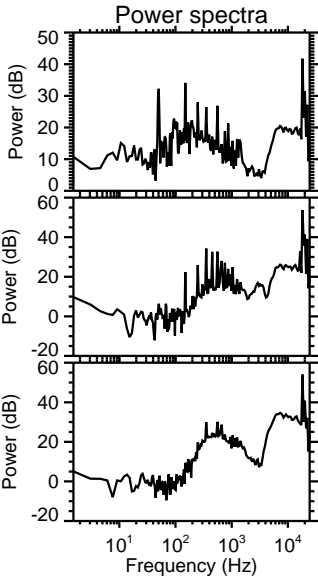
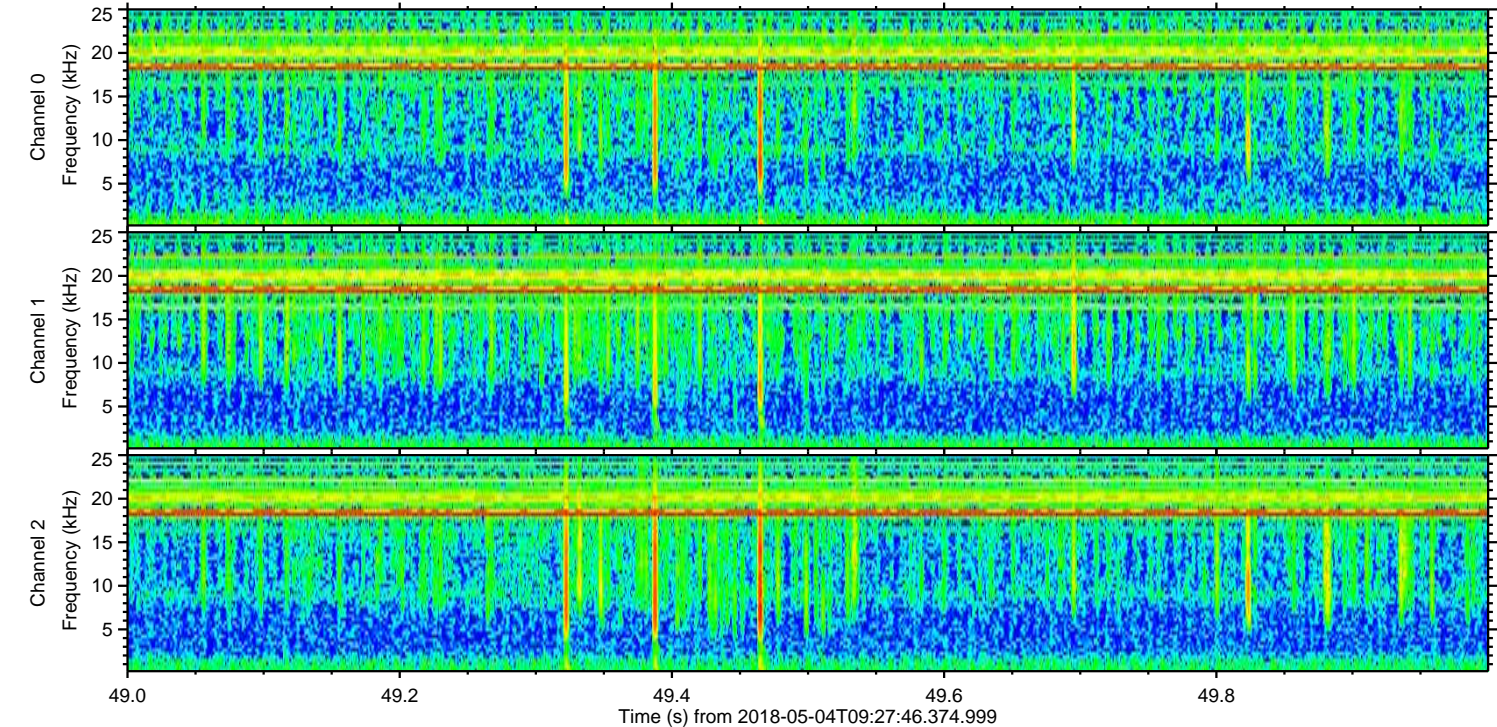
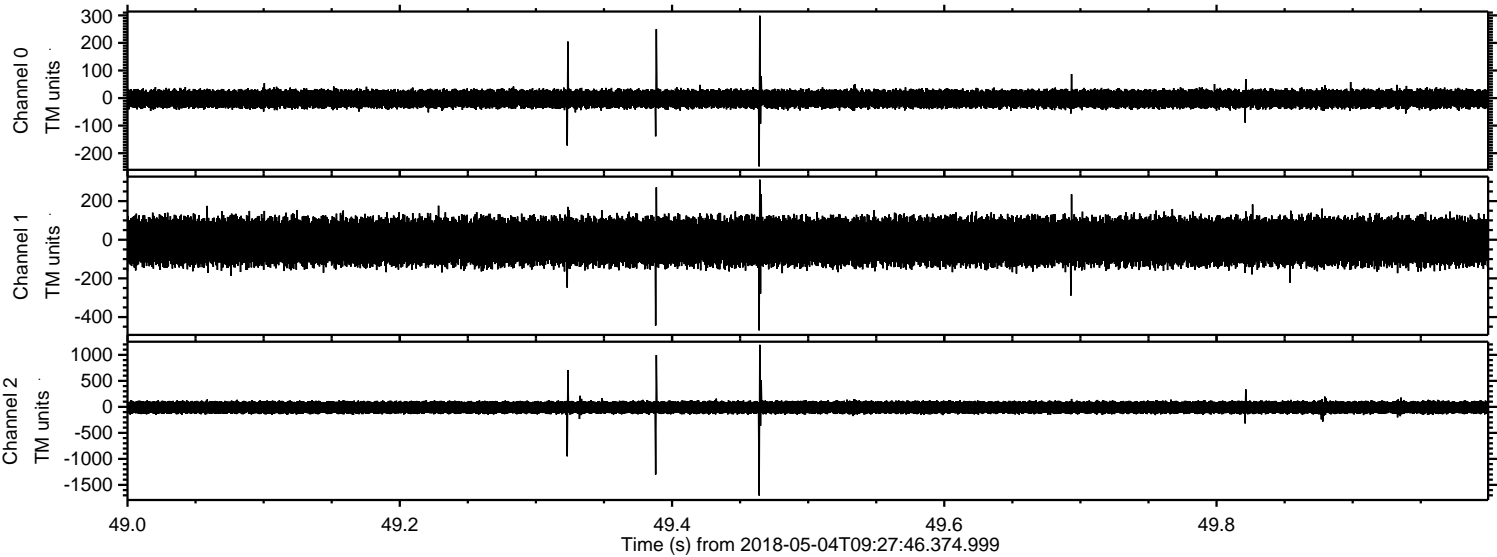
Channel 1
mn: -617
mx: 479
 μ : -9.9
 σ : 68.6

Channel 2
mn: -1780
mx: 1162
 μ : -10.7
 σ : 72.3

Processed Fri May 4 11:36:17 2018 by ELM ver.2012-10-06 from 001__elm20180504_092745__dat00.bin



Processed Fri May 4 11:36:18 2018 by ELM ver.2012-10-06 from 001__elm20180504_092745__dat00.bin



Processed Fri May 4 11:36:18 2018 by ELM ver.2012-10-06 from 001__elm20180504_092745__dat00.bin

