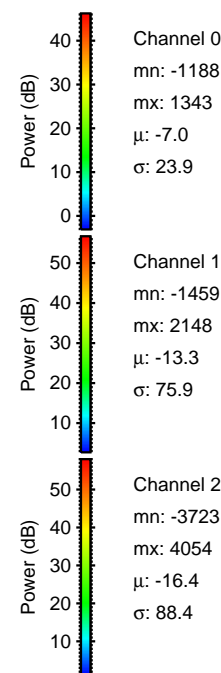
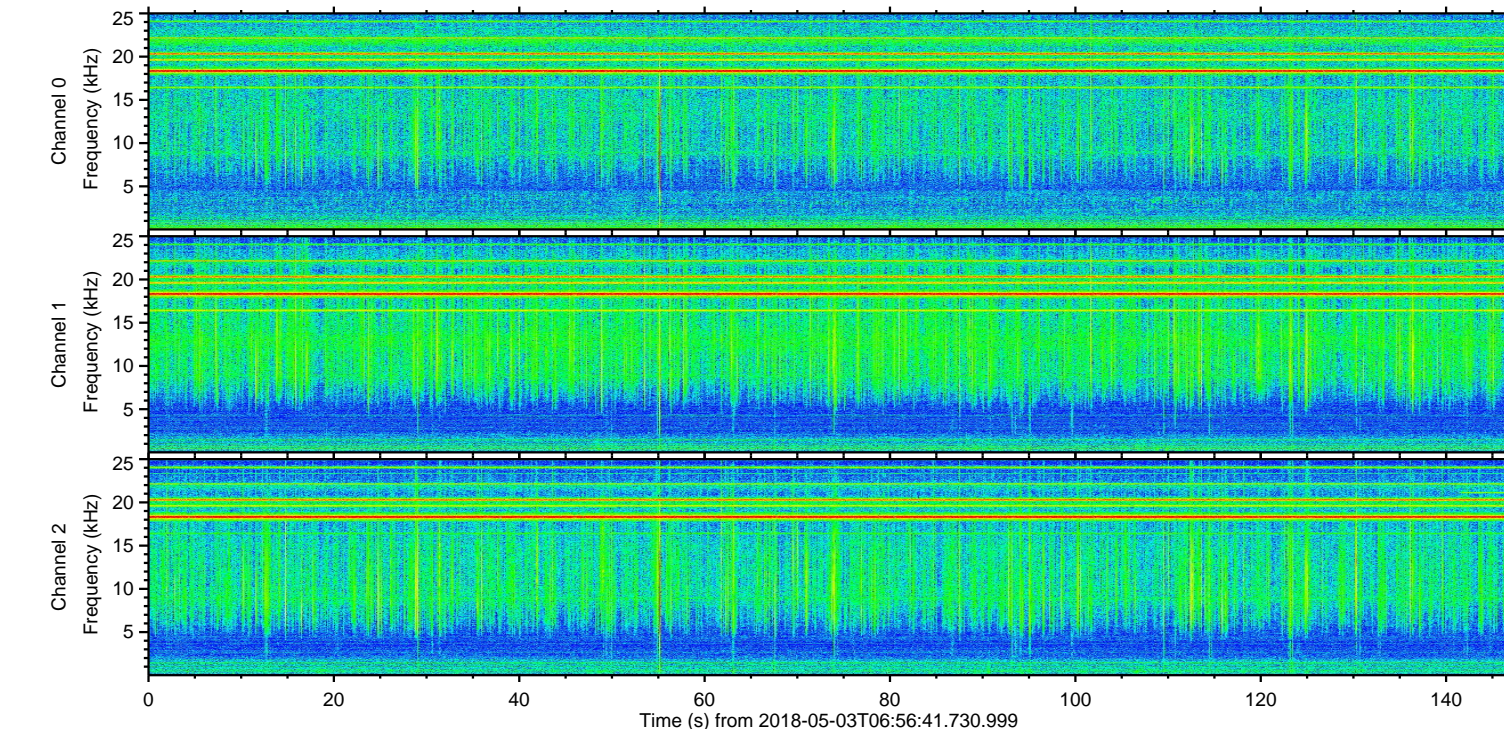
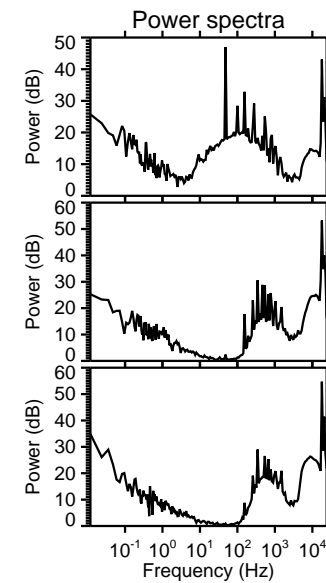
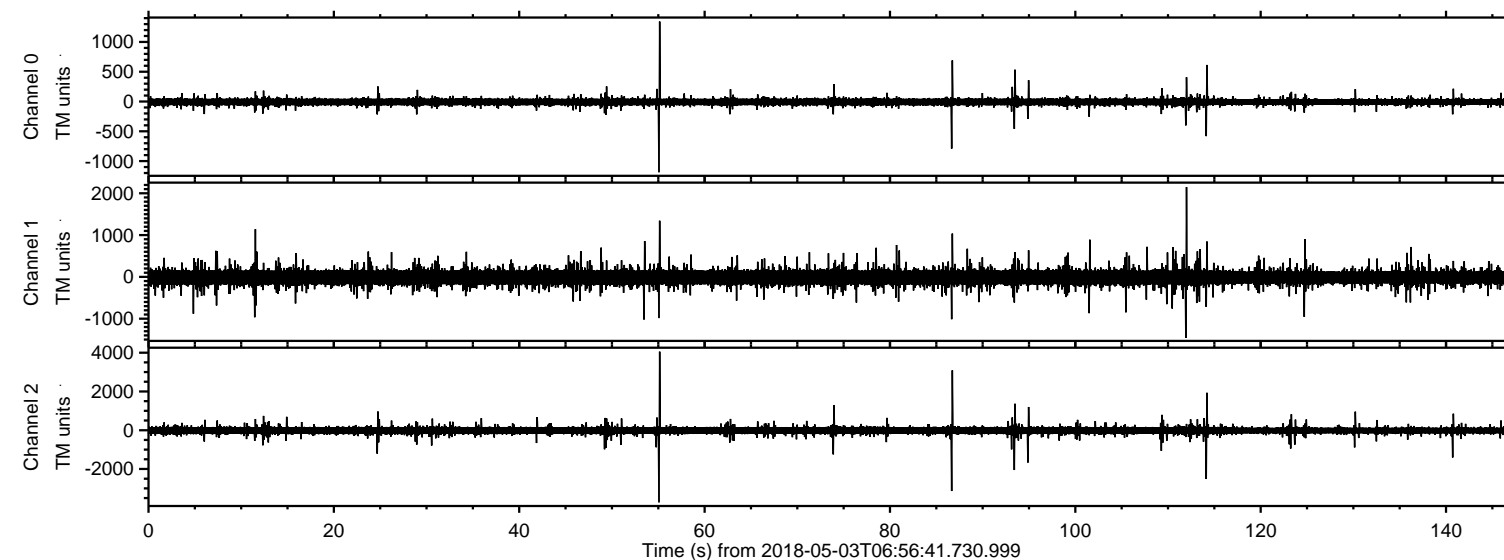
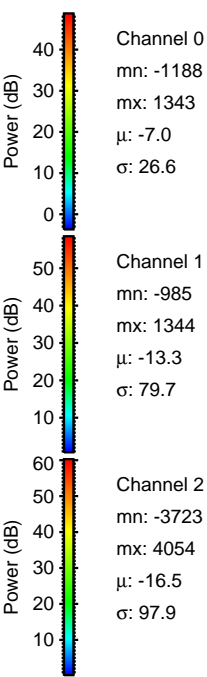
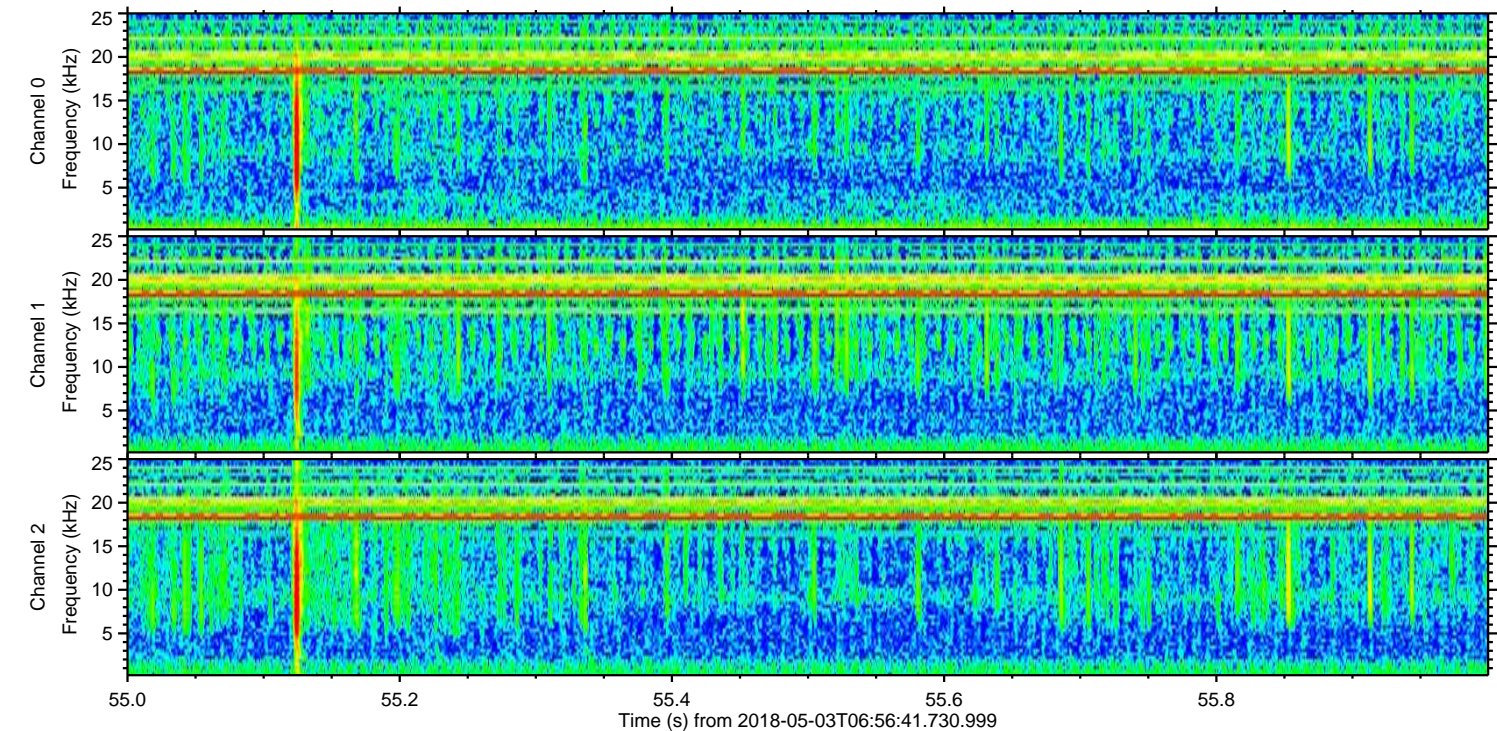
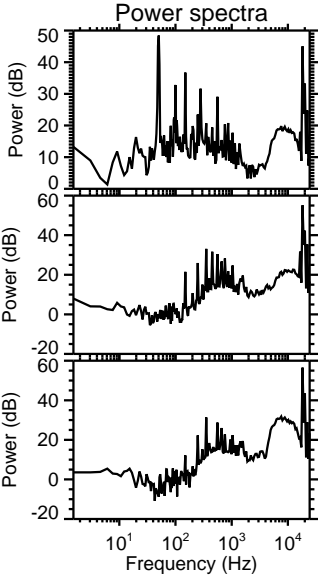
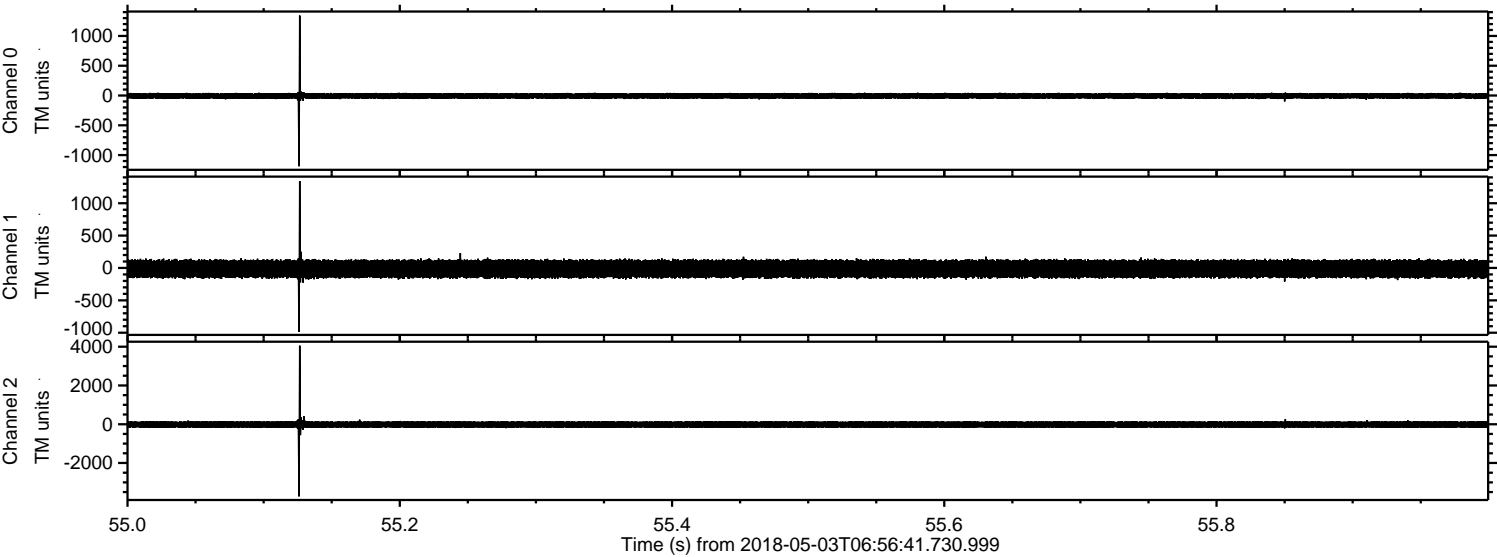


ELMAVAN 3D WAVEFORMS (Measured data sampled at 50 kHz) 51000 packets of 144 samples from 2018-05-03T06:56:41.730.999.

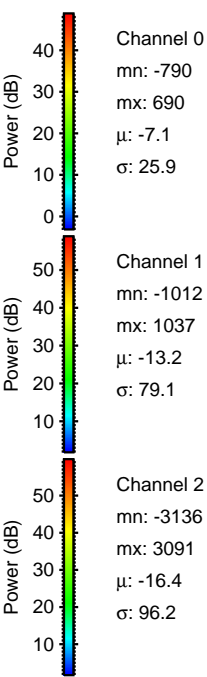
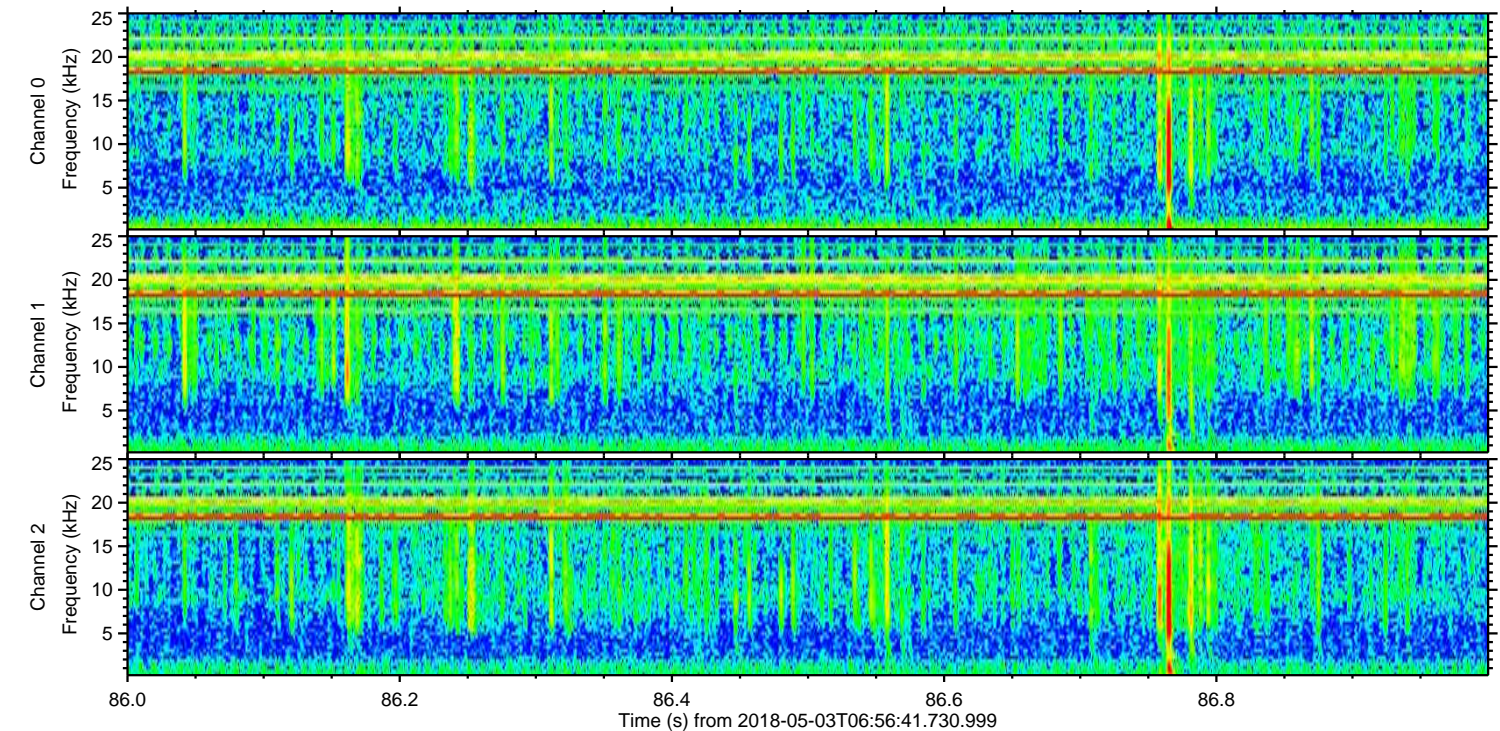
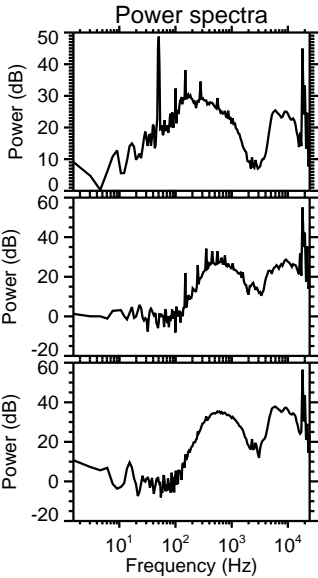
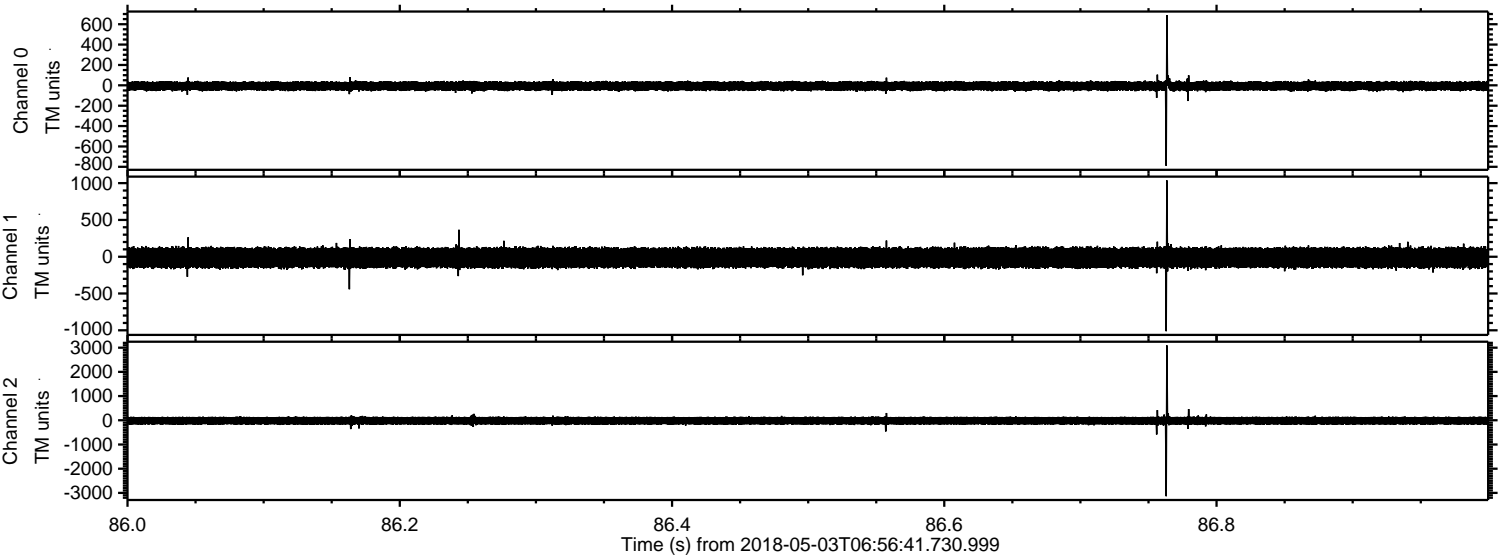
Processed Thu May 3 09:04:56 2018 by ELM ver.2012-10-06 from 001__elm20180503_065640__dat00.bin



Processed Thu May 3 09:05:02 2018 by ELM ver.2012-10-06 from 001__elm20180503_065640__dat00.bin

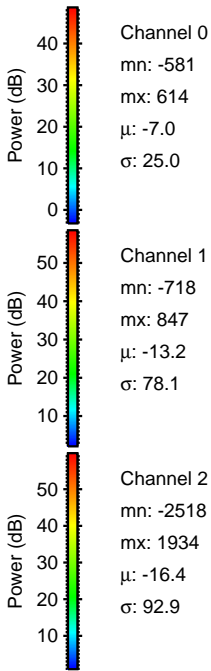
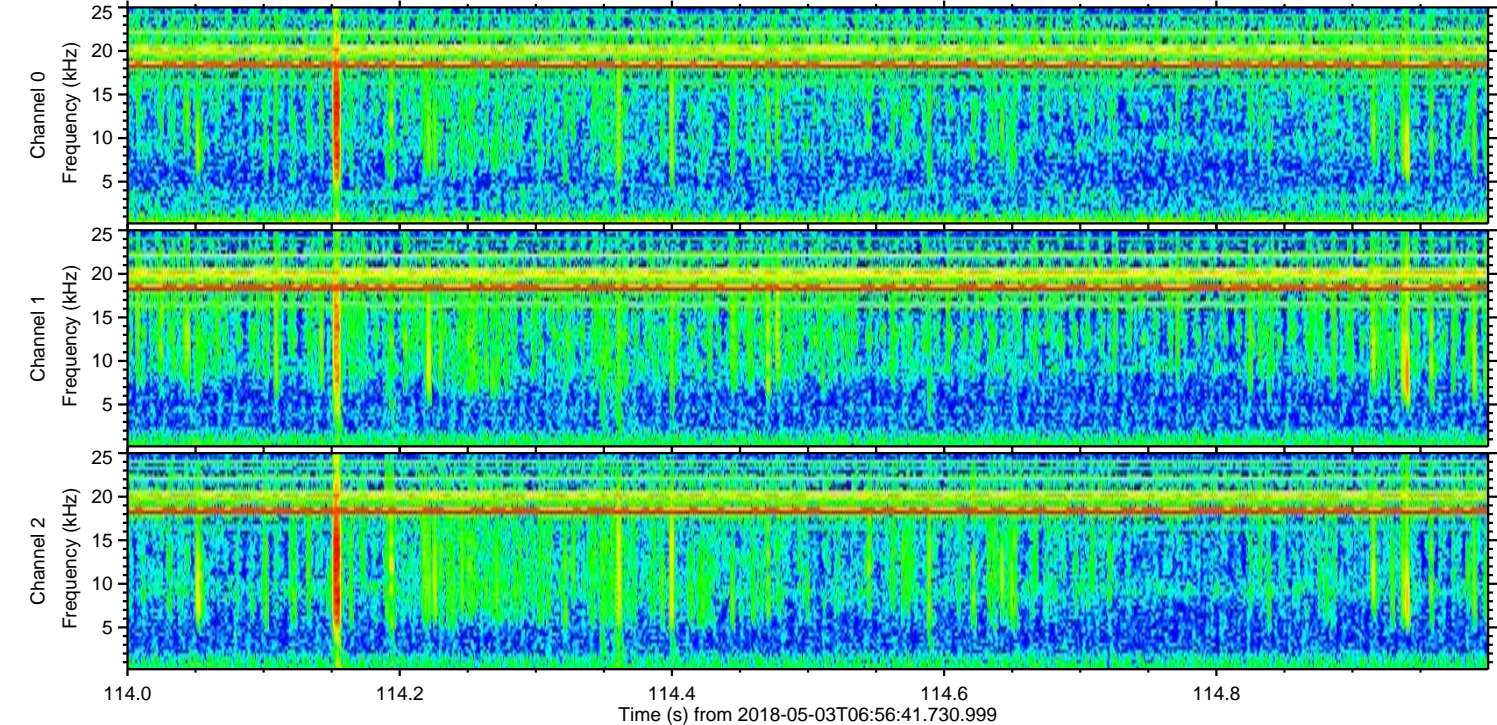
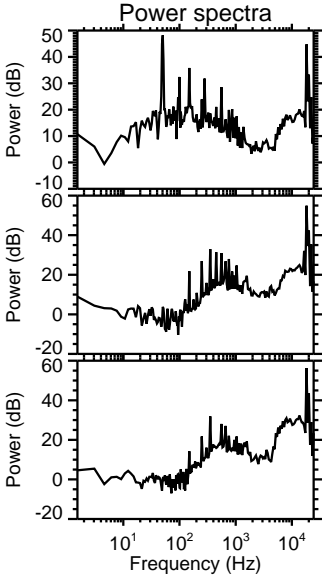
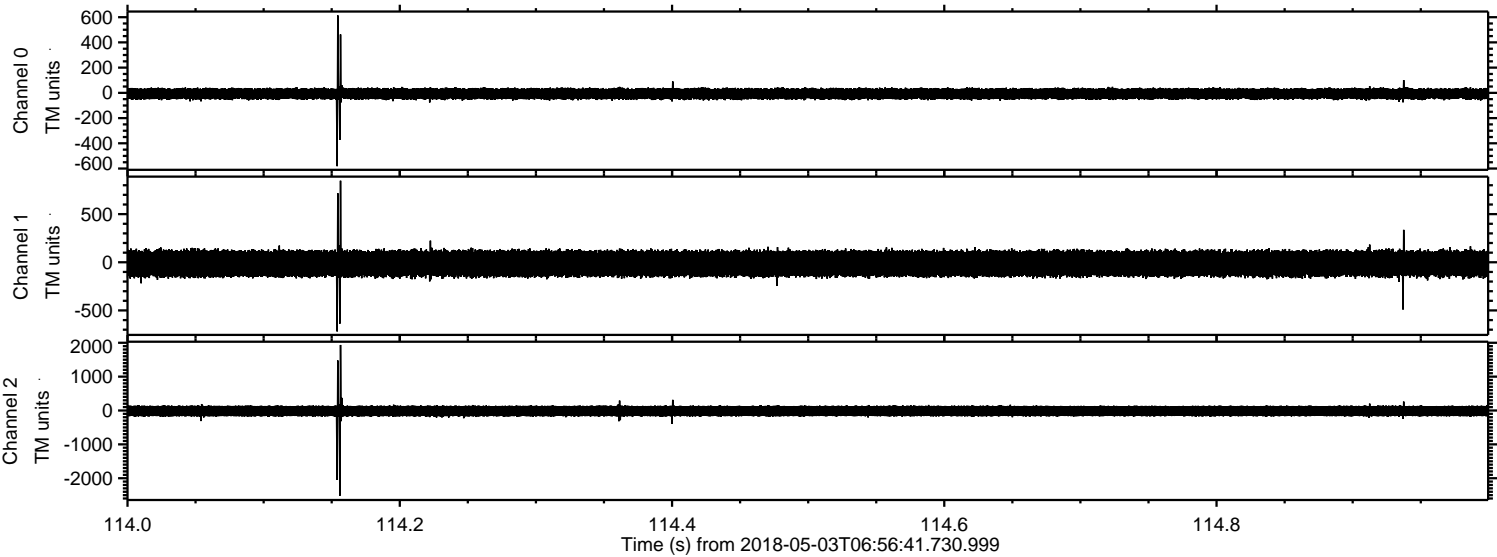


Processed Thu May 3 09:05:02 2018 by ELM ver.2012-10-06 from 001__elm20180503_065640__dat00.bin



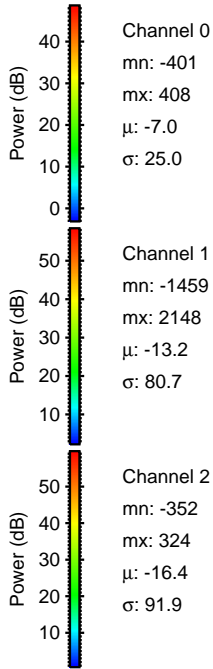
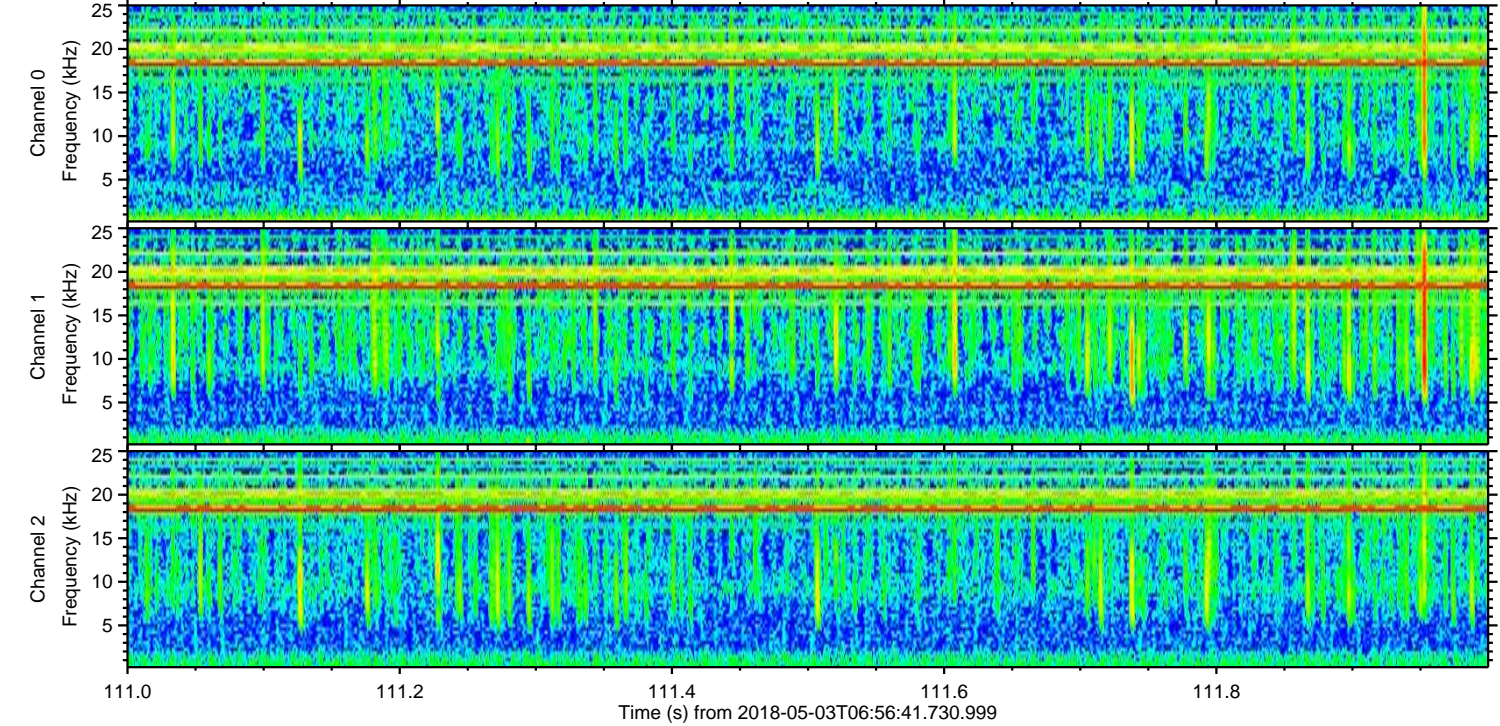
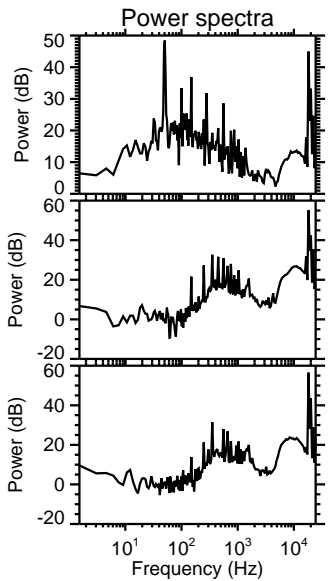
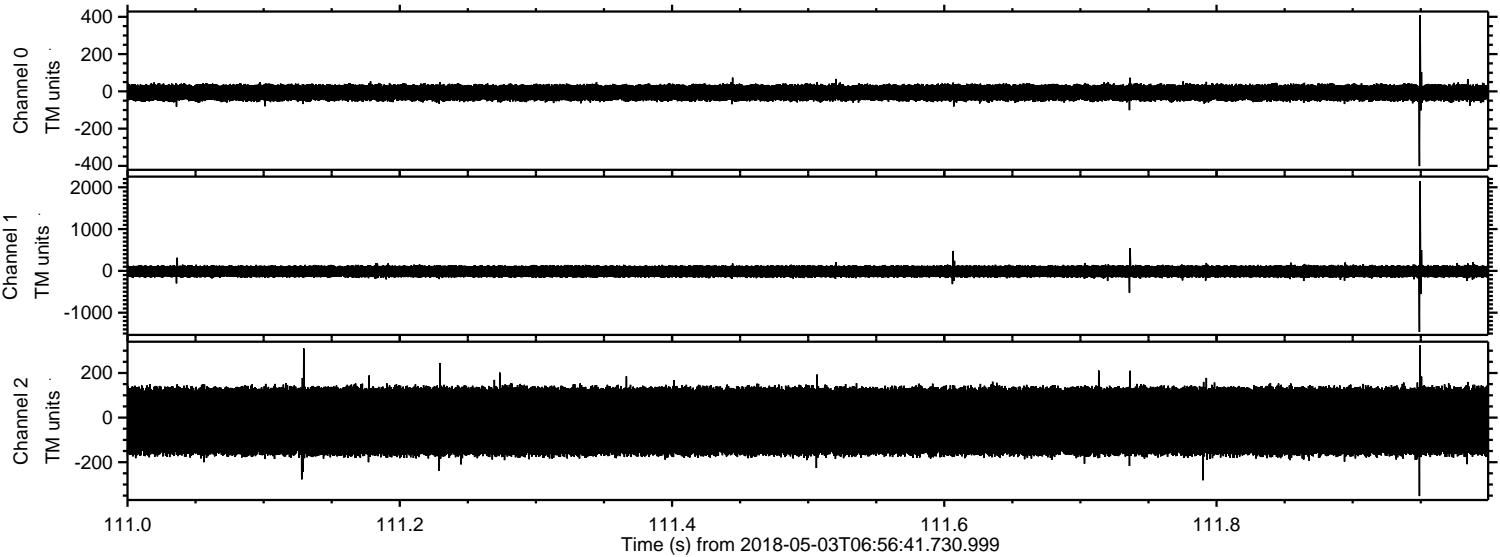
ELMAVAN 3D WAVEFORMS (Measured data sampled at 50 kHz) 51000 packets of 144 samples from 2018-05-03T06:56:41.730.999. Part 115/147

Processed Thu May 3 09:05:03 2018 by ELM ver.2012-10-06 from 001__elm20180503_065640__dat00.bin

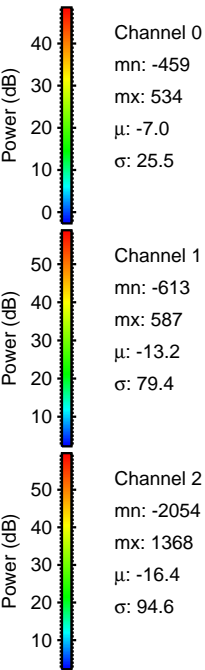
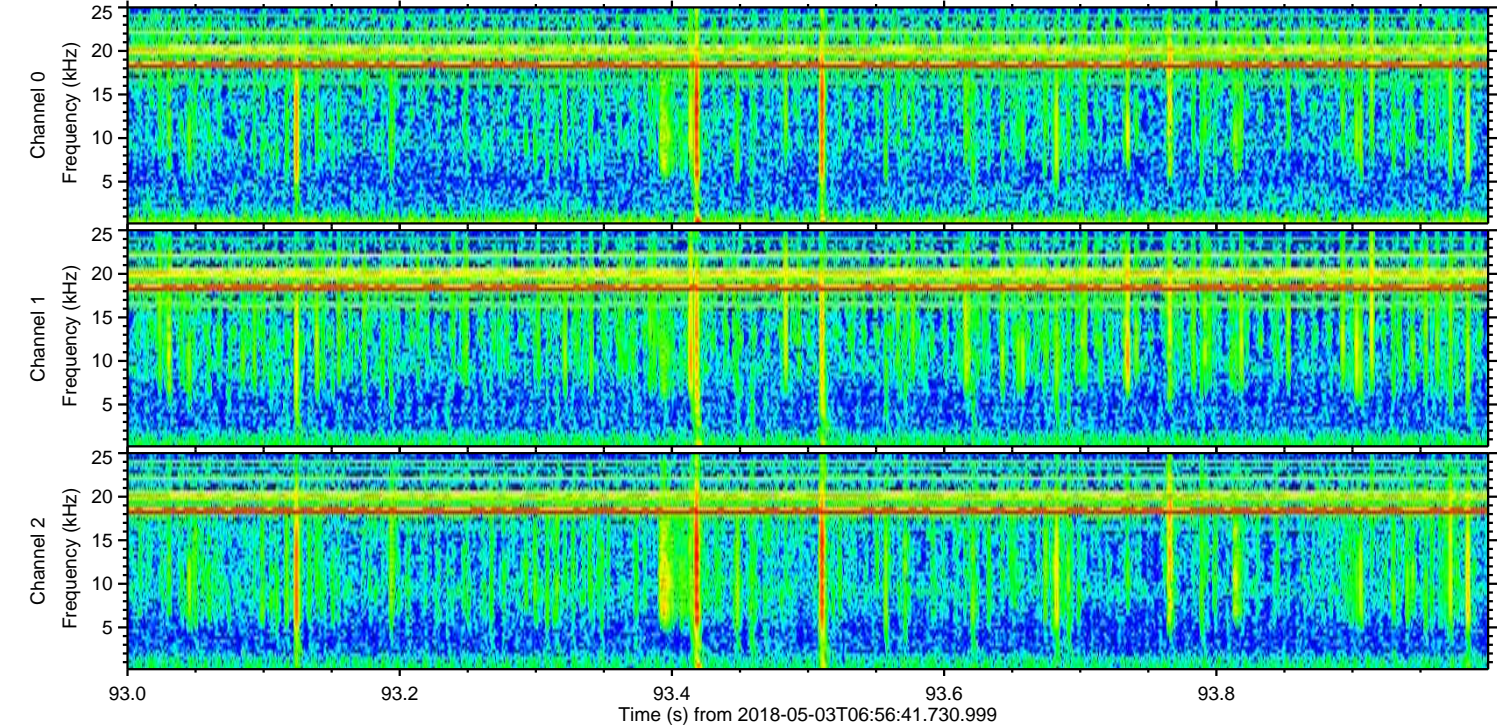
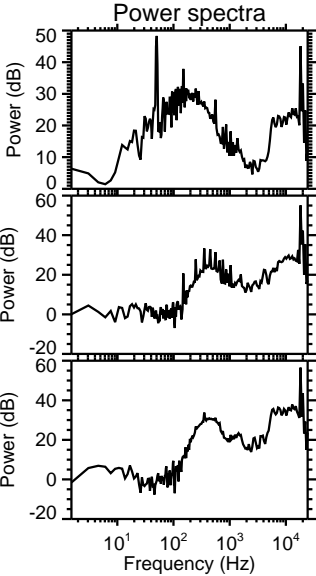
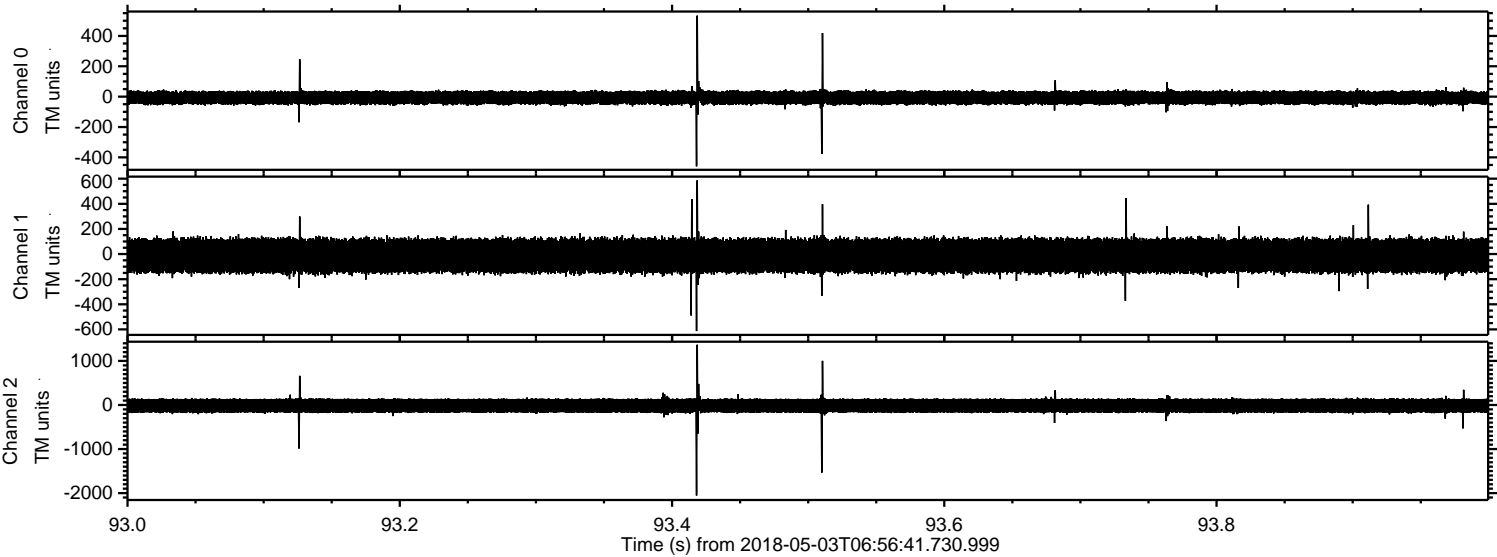


ELMAVAN 3D WAVEFORMS (Measured data sampled at 50 kHz) 51000 packets of 144 samples from 2018-05-03T06:56:41.730.999. Part 112/147

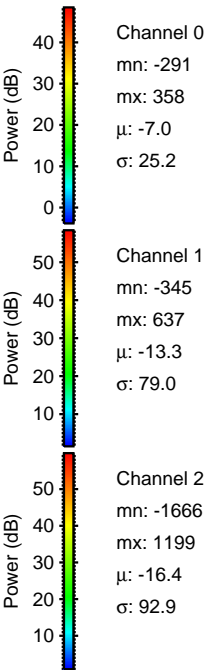
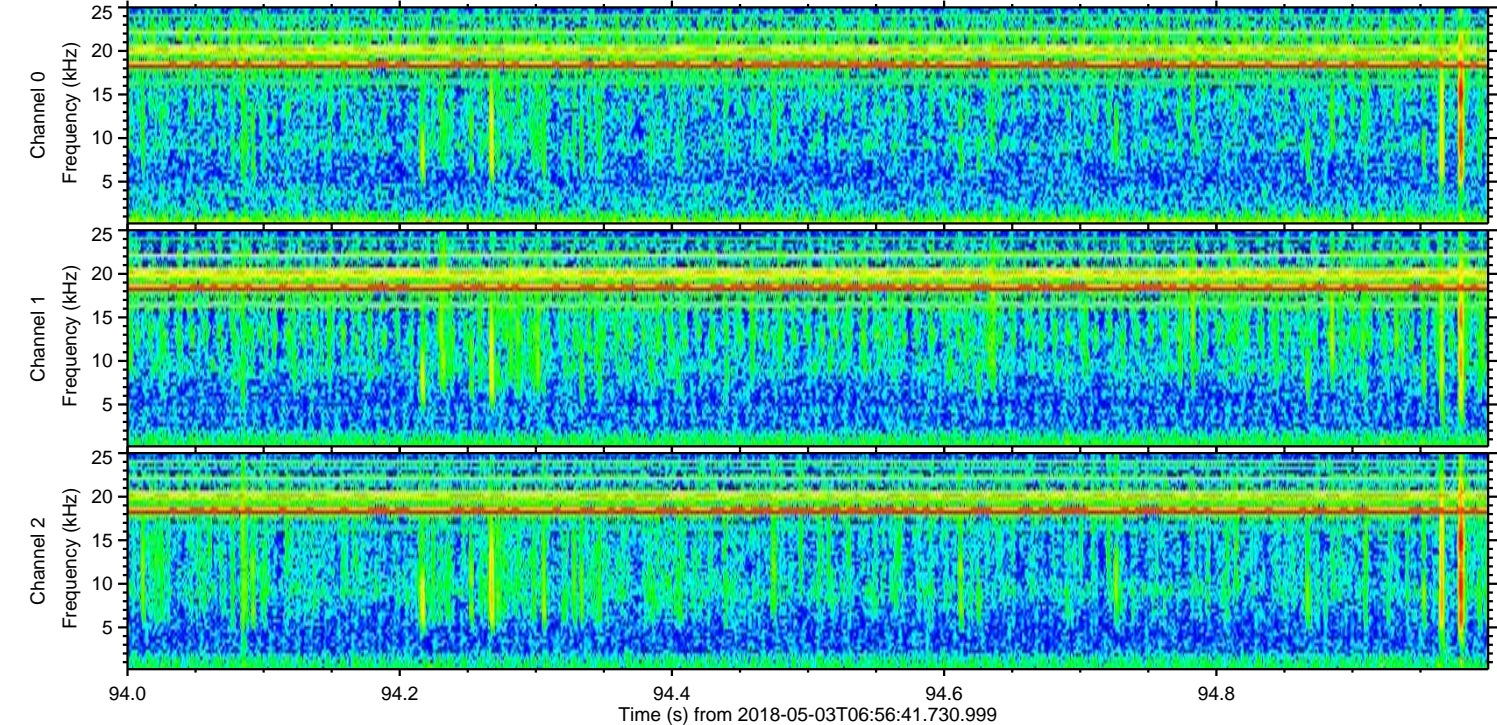
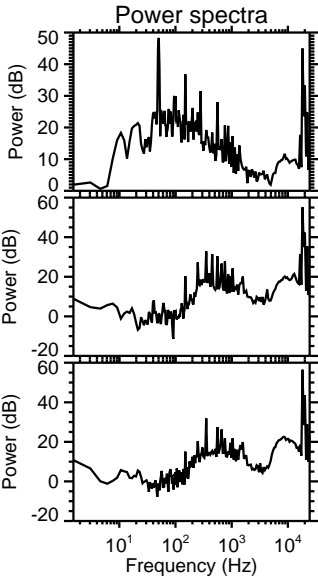
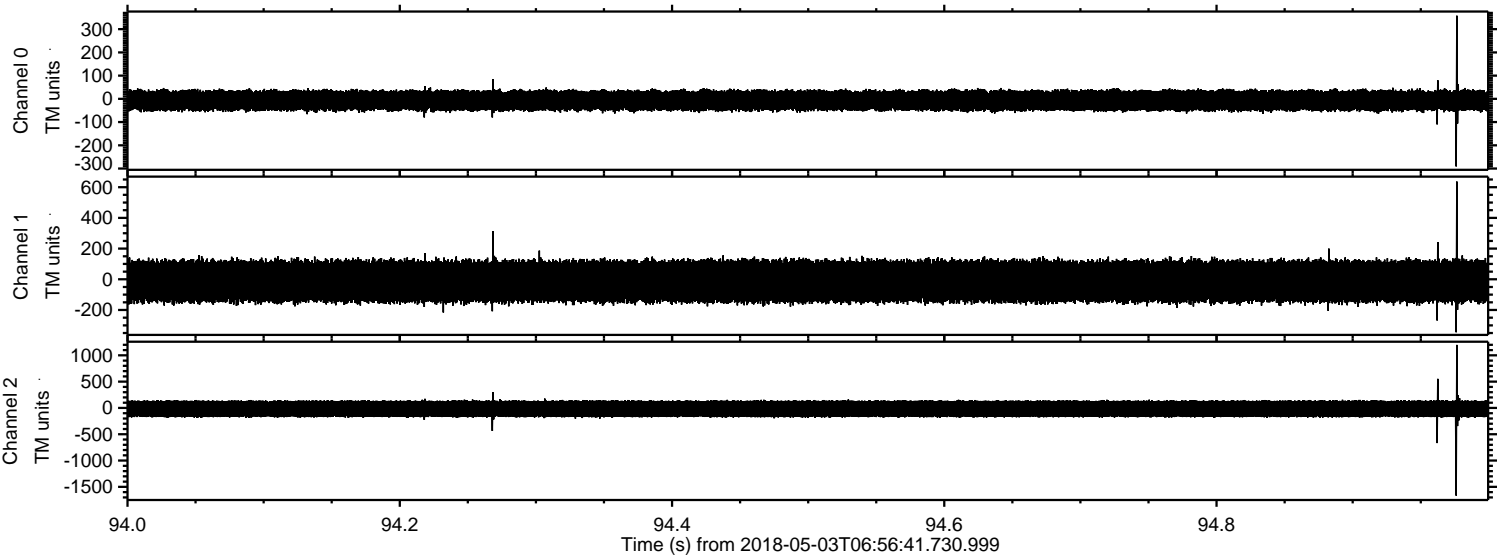
Processed Thu May 3 09:05:04 2018 by ELM ver.2012-10-06 from 001__elm20180503_065640__dat00.bin



Processed Thu May 3 09:05:04 2018 by ELM ver.2012-10-06 from 001__elm20180503_065640__dat00.bin

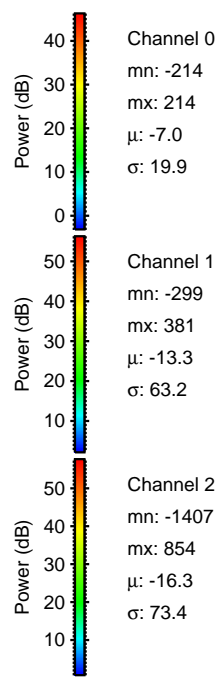
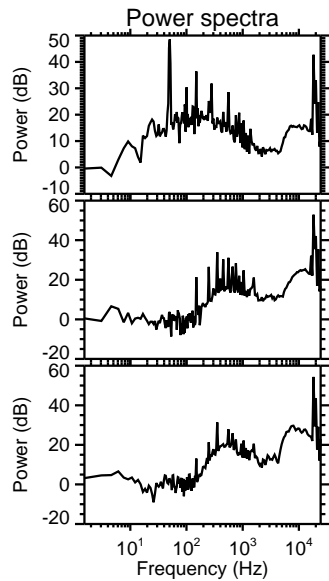
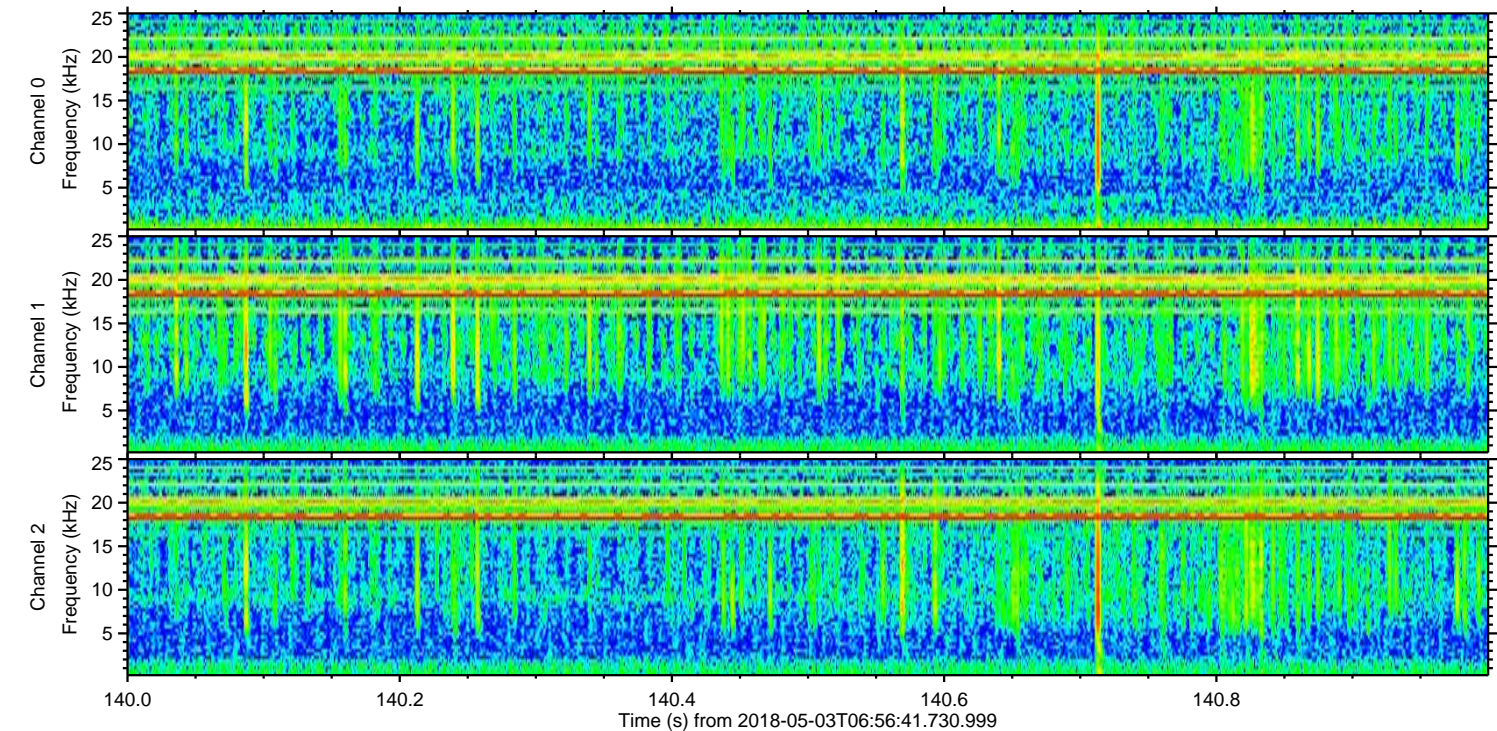
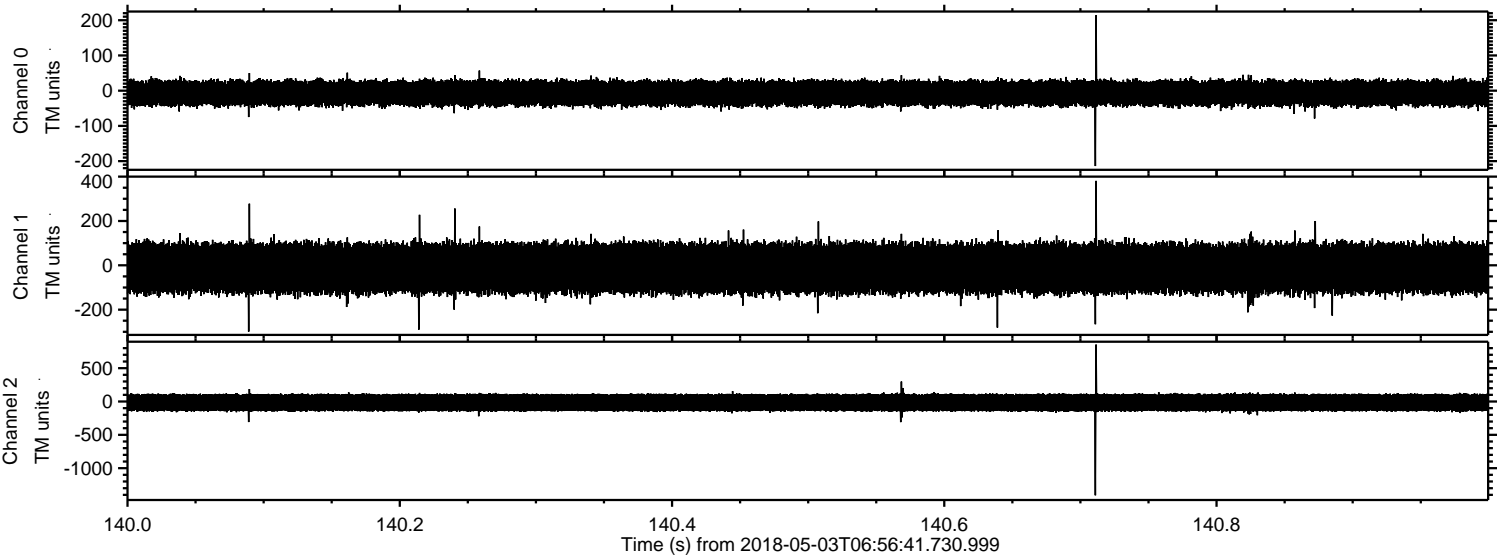


Processed Thu May 3 09:05:05 2018 by ELM ver.2012-10-06 from 001__elm20180503_065640__dat00.bin



ELMAVAN 3D WAVEFORMS (Measured data sampled at 50 kHz) 51000 packets of 144 samples from 2018-05-03T06:56:41.730.999. Part 141/147

Processed Thu May 3 09:05:05 2018 by ELM ver.2012-10-06 from 001__elm20180503_065640__dat00.bin

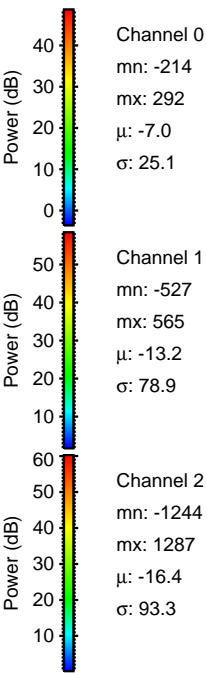
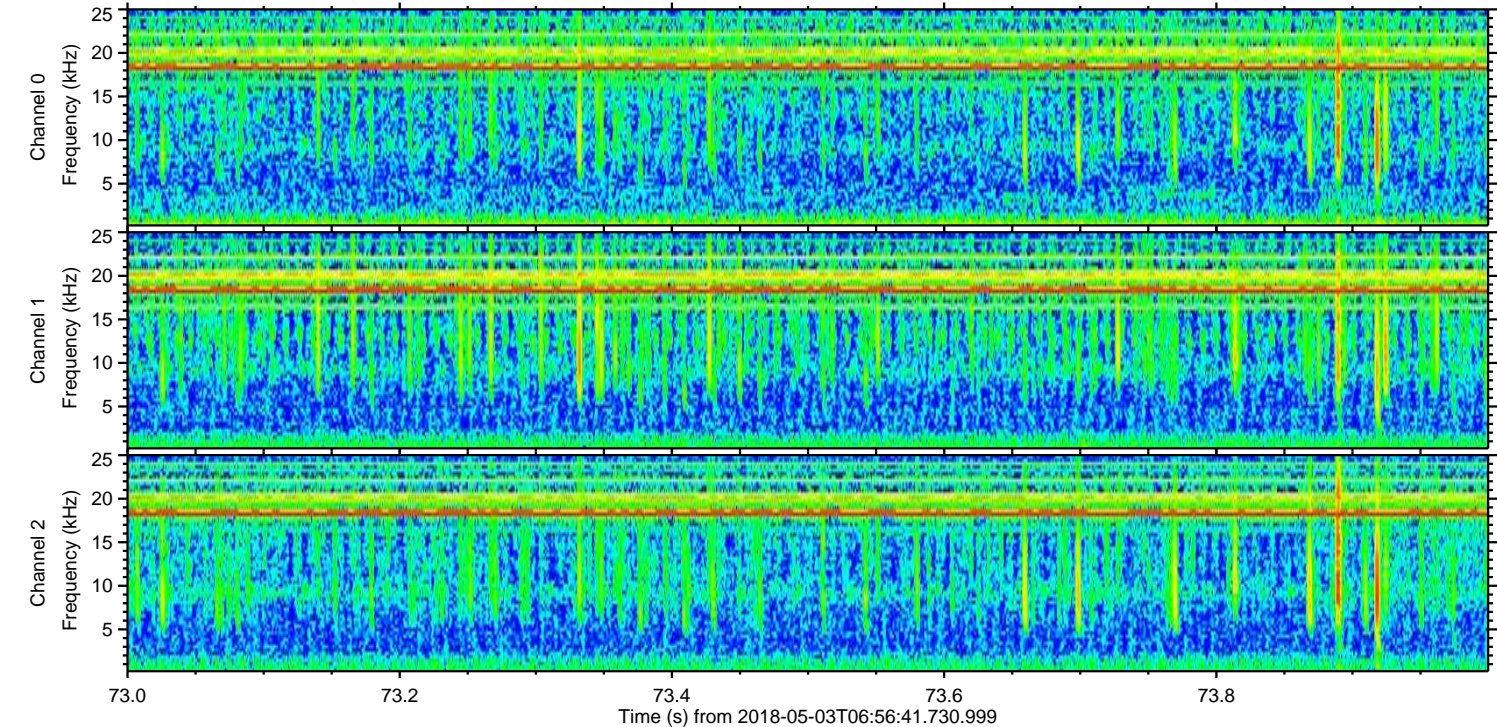
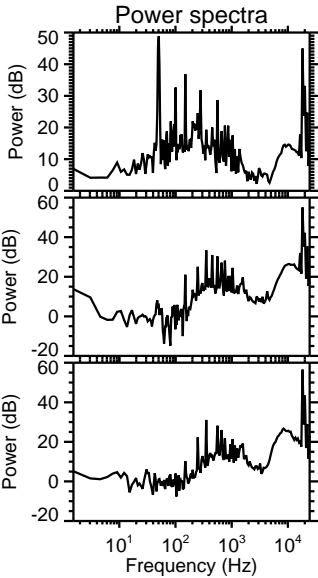
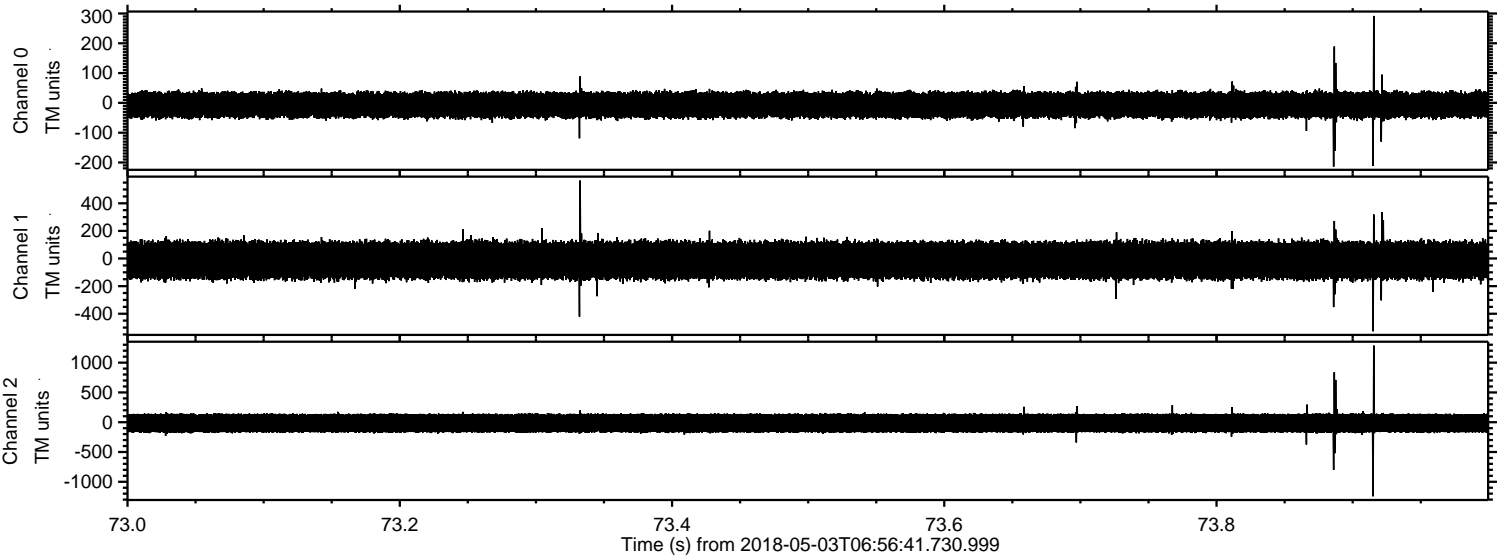


Channel 0
mn: -214
mx: 214
 μ : -7.0
 σ : 19.9

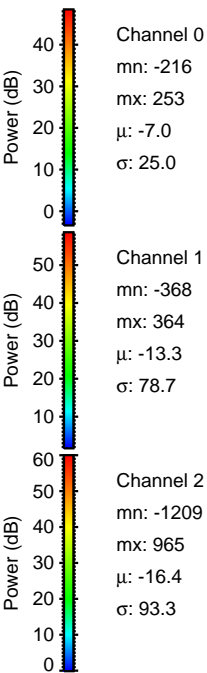
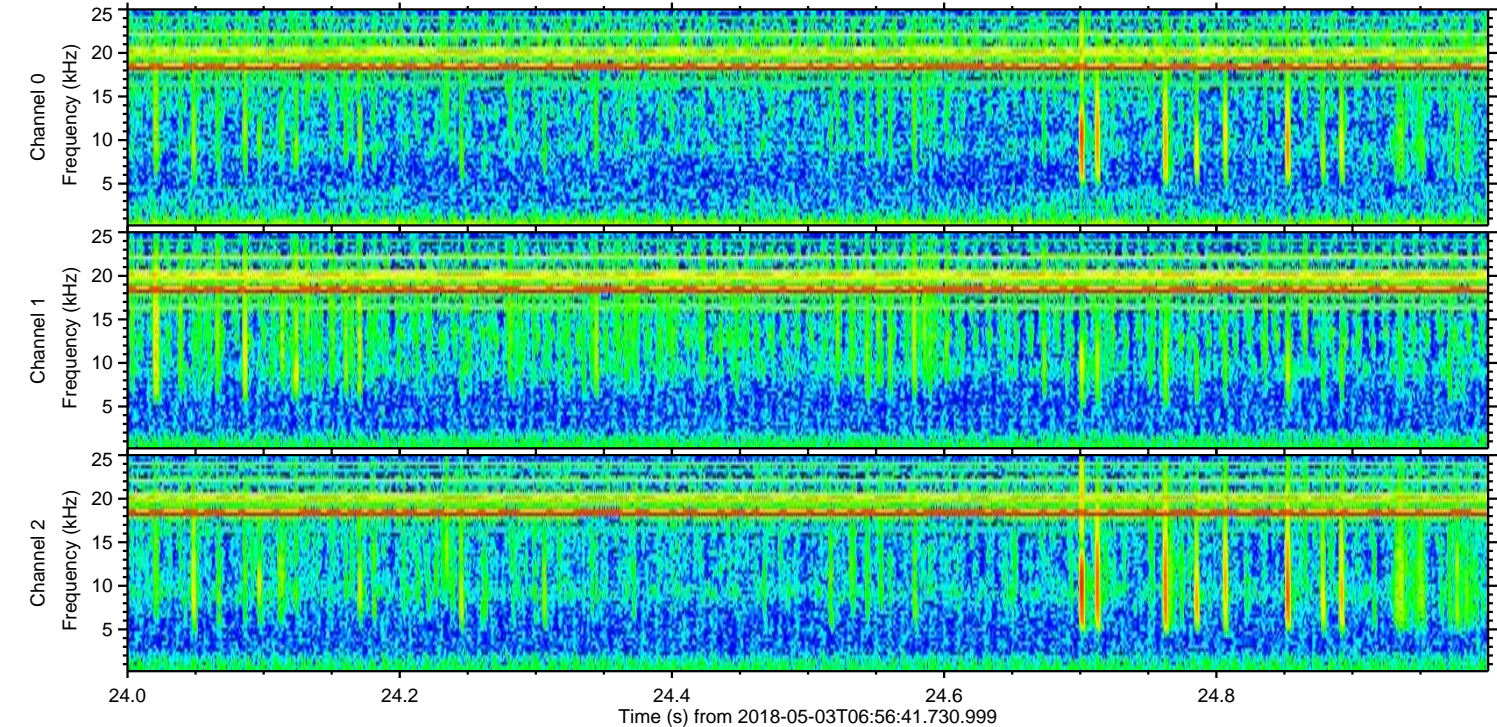
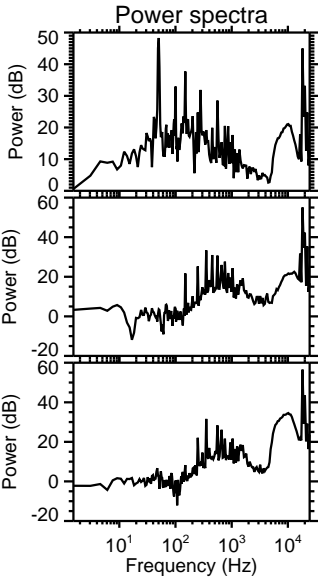
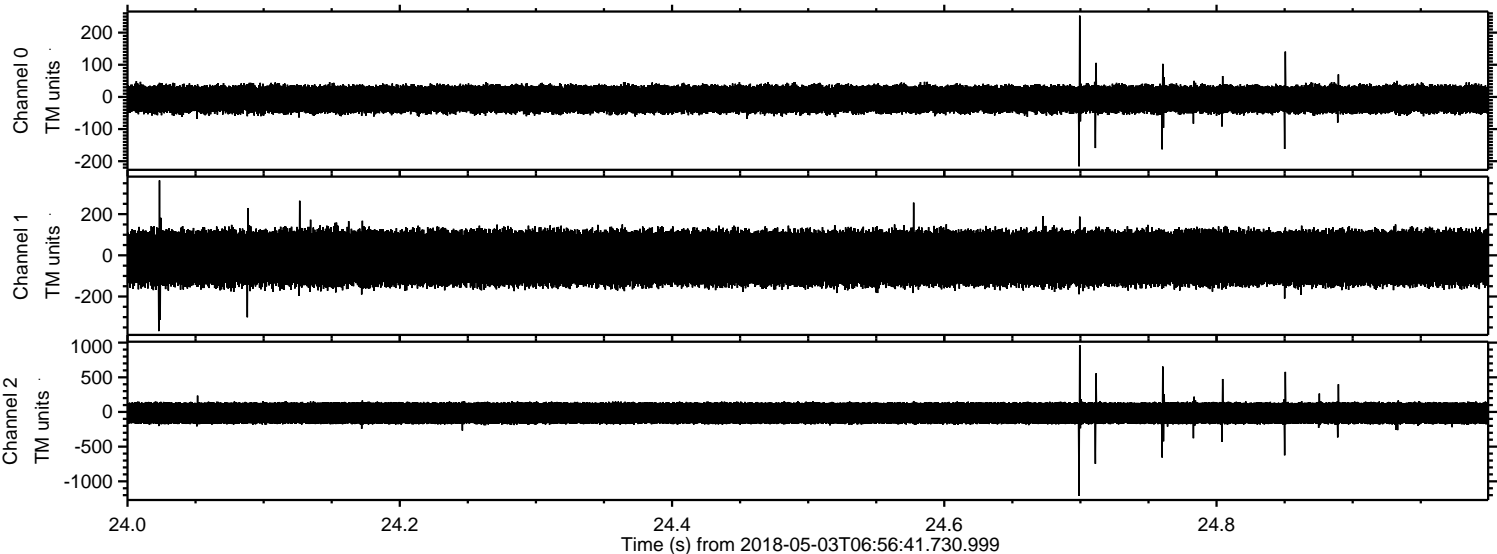
Channel 1
mn: -299
mx: 381
 μ : -13.3
 σ : 63.2

Channel 2
mn: -1407
mx: 854
 μ : -16.3
 σ : 73.4

Processed Thu May 3 09:05:06 2018 by ELM ver.2012-10-06 from 001__elm20180503_065640__dat00.bin



Processed Thu May 3 09:05:07 2018 by ELM ver.2012-10-06 from 001__elm20180503_065640__dat00.bin



Processed Thu May 3 09:05:07 2018 by ELM ver.2012-10-06 from 001__elm20180503_065640__dat00.bin

