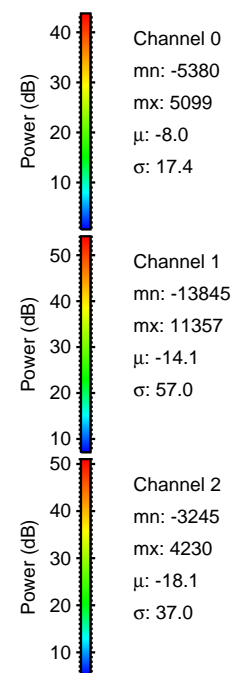
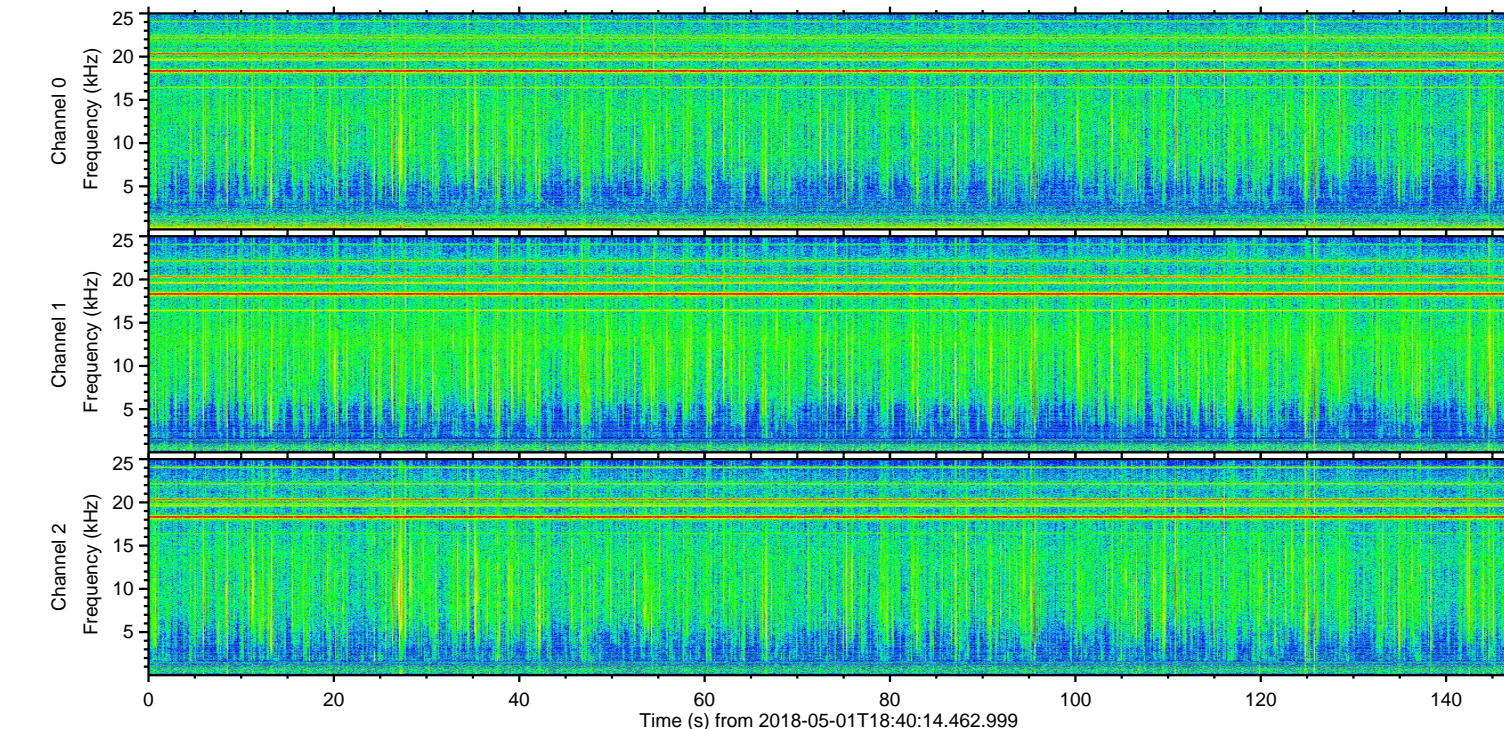
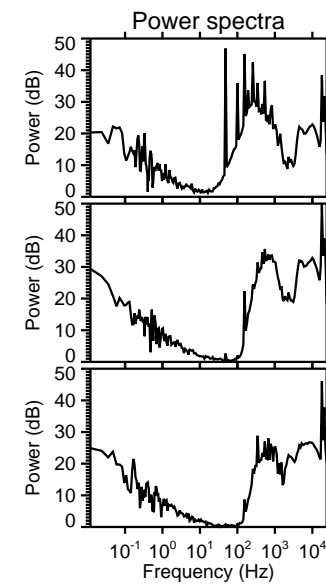
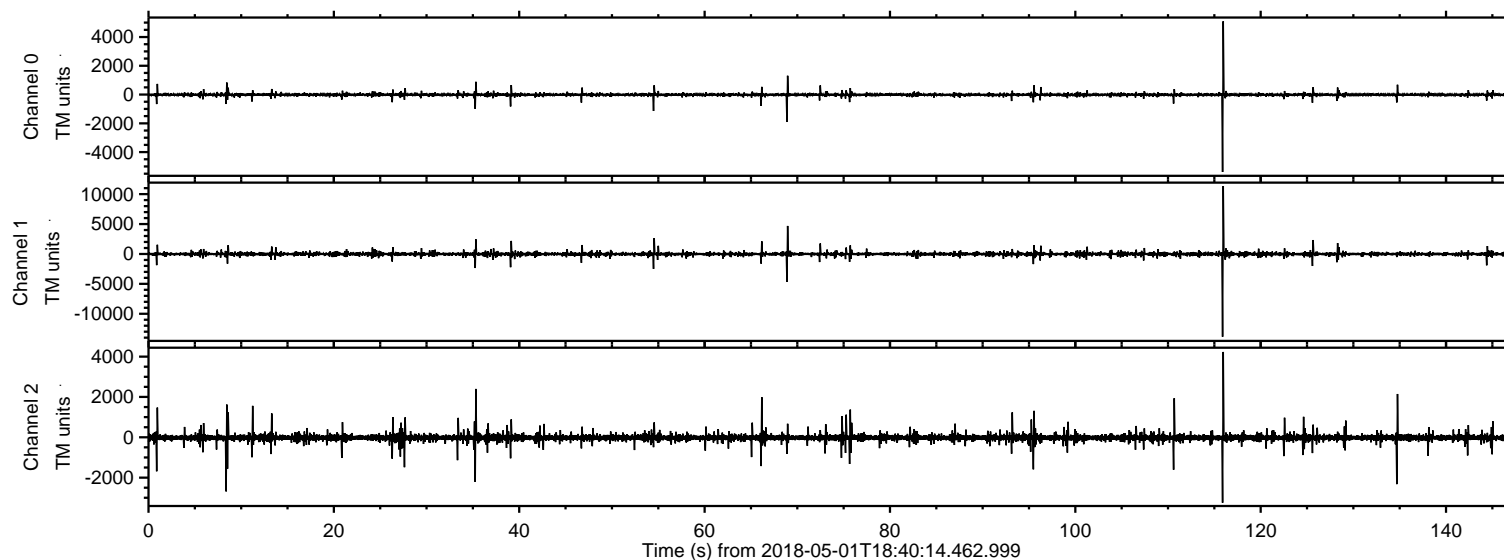


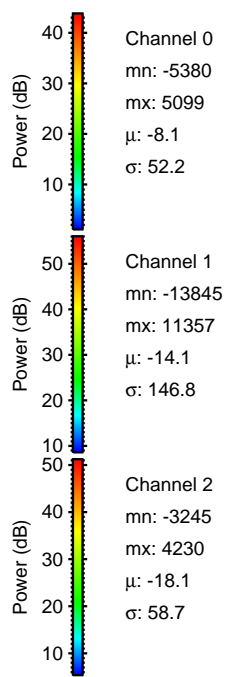
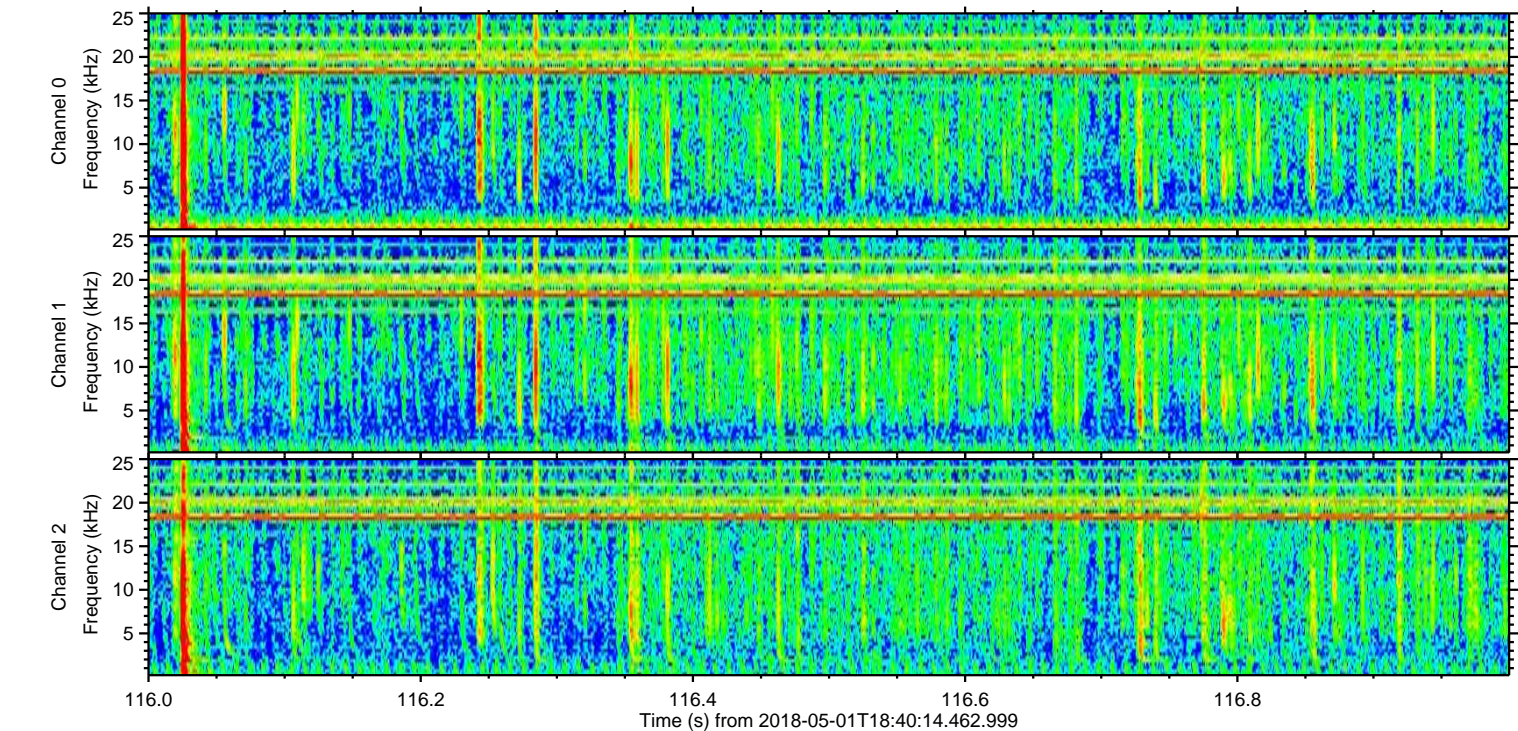
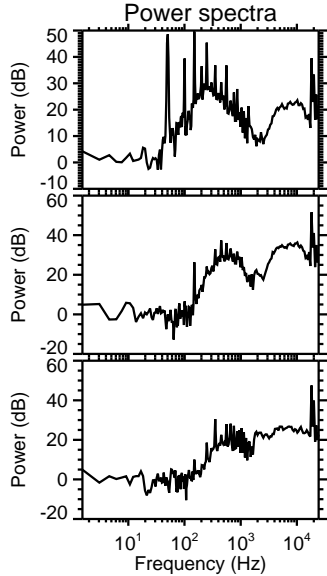
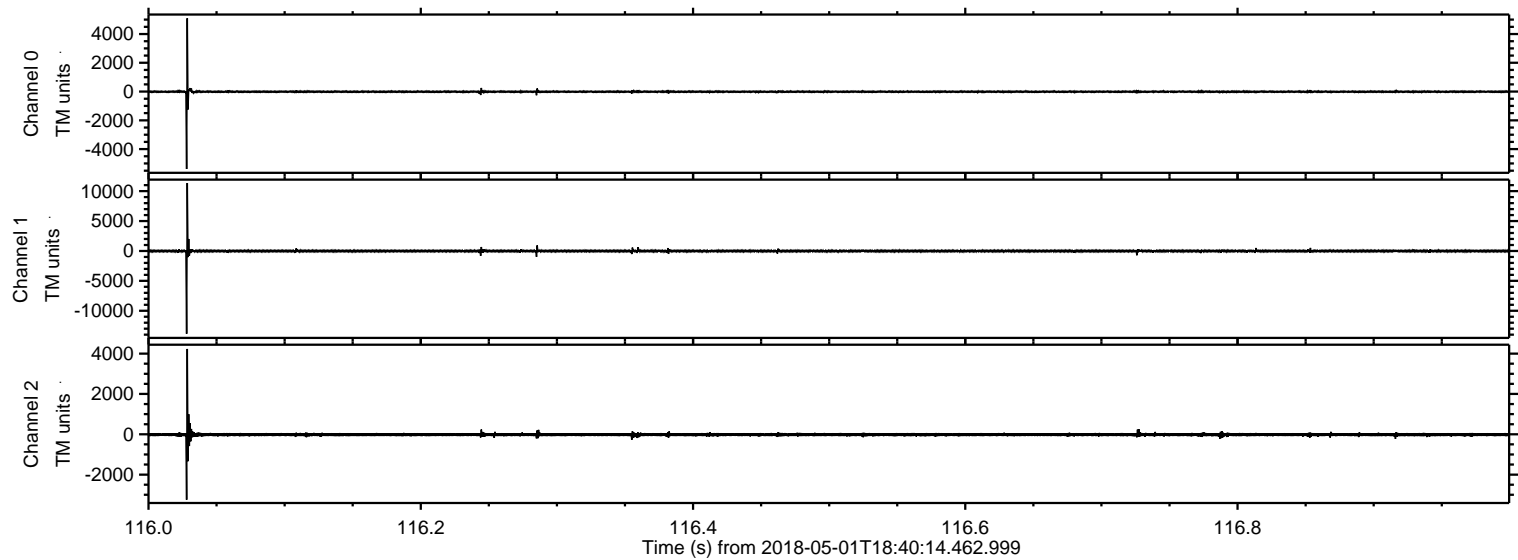
ELMAVAN 3D WAVEFORMS (Measured data sampled at 50 kHz) 51000 packets of 144 samples from 2018-05-01T18:40:14.462.999.

Processed Tue May 1 20:47:57 2018 by ELM ver.2012-10-06 from 001__elm20180501_184013__dat00.bin

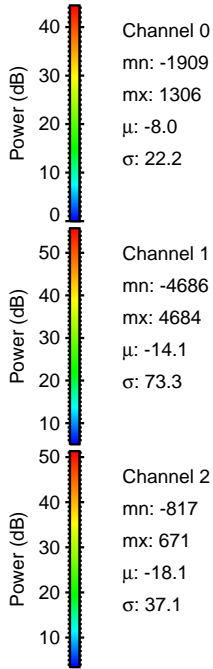
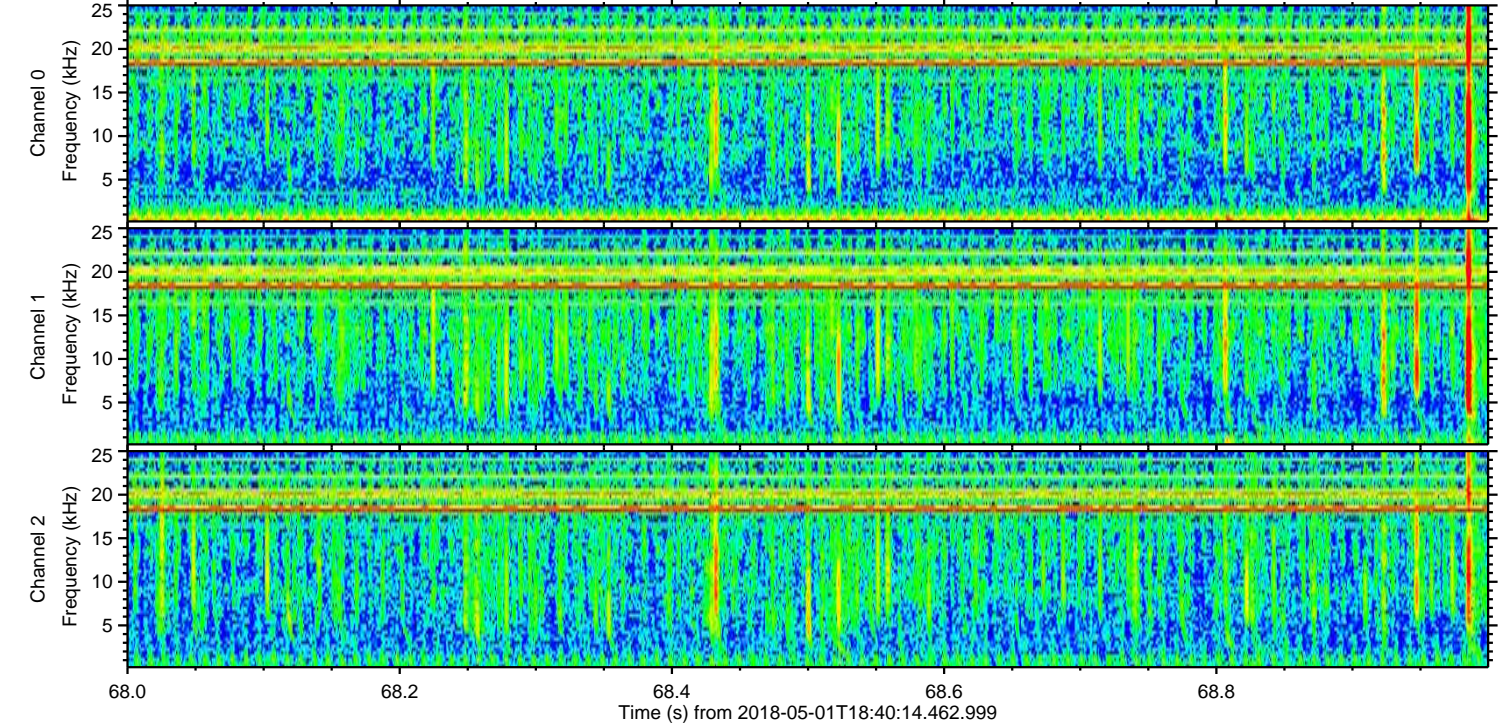
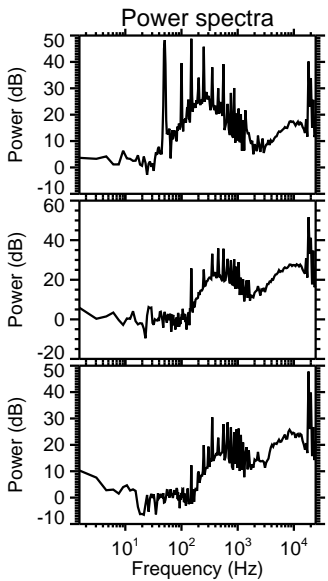
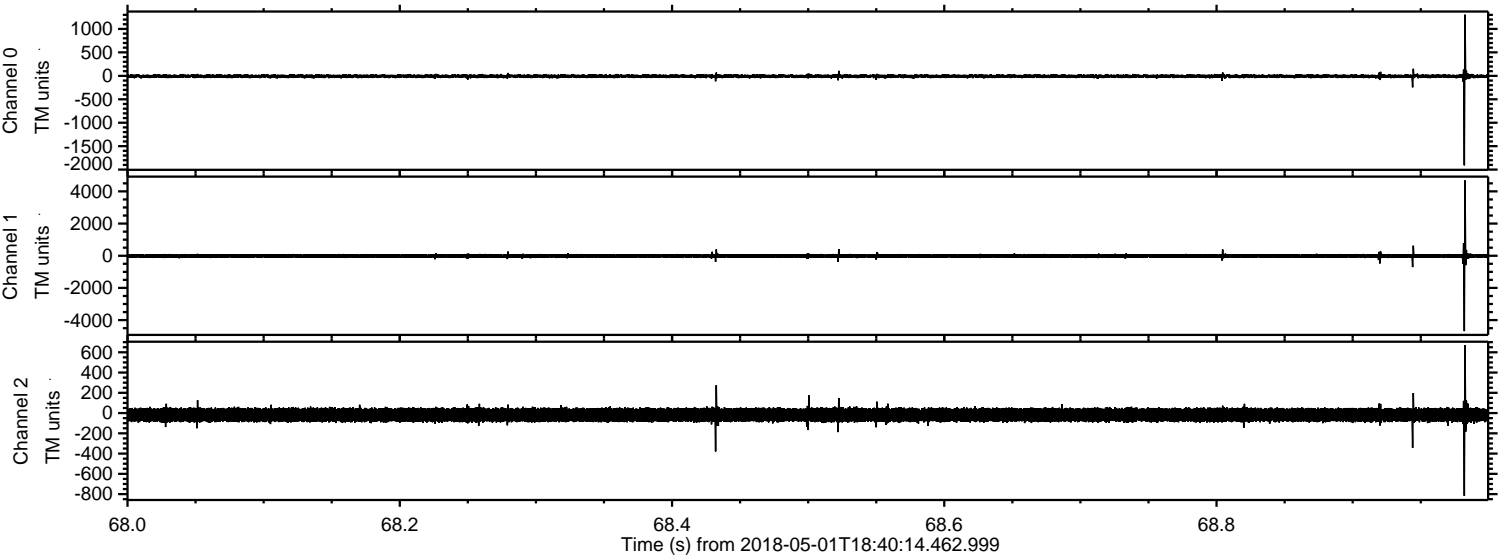


ELMAVAN 3D WAVEFORMS (Measured data sampled at 50 kHz) 51000 packets of 144 samples from 2018-05-01T18:40:14.462.999. Part 117/147

Processed Tue May 1 20:48:03 2018 by ELM ver.2012-10-06 from 001__elm20180501_184013__dat00.bin

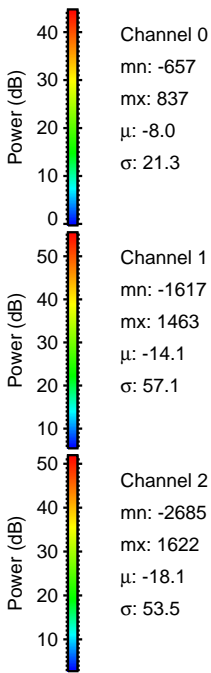
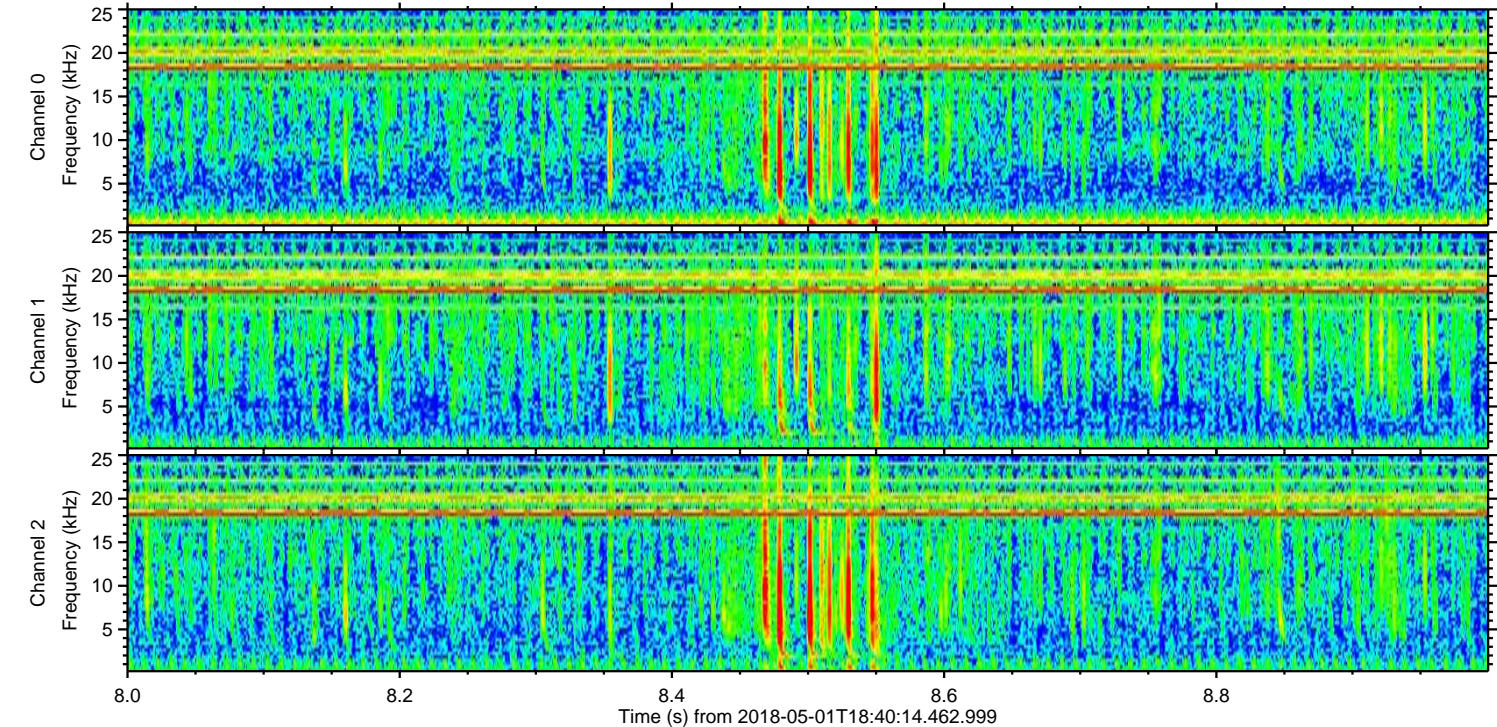
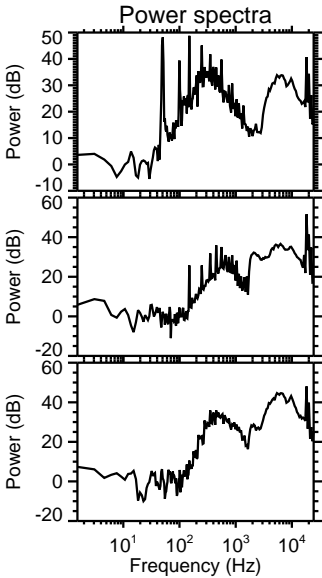
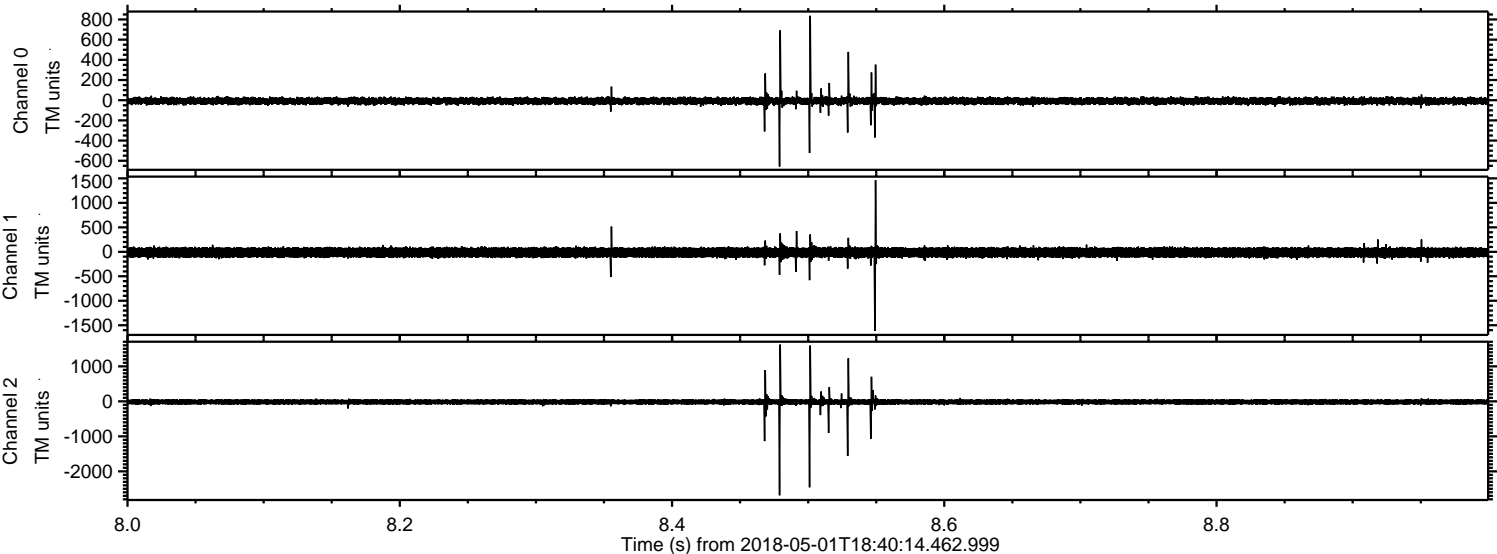


Processed Tue May 1 20:48:04 2018 by ELM ver.2012-10-06 from 001__elm20180501_184013__dat00.bin

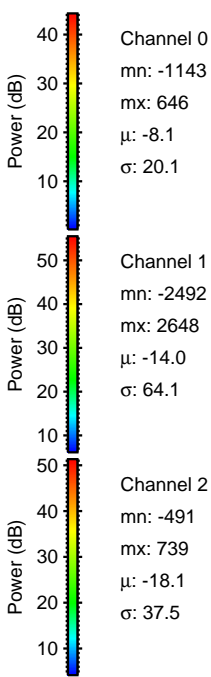
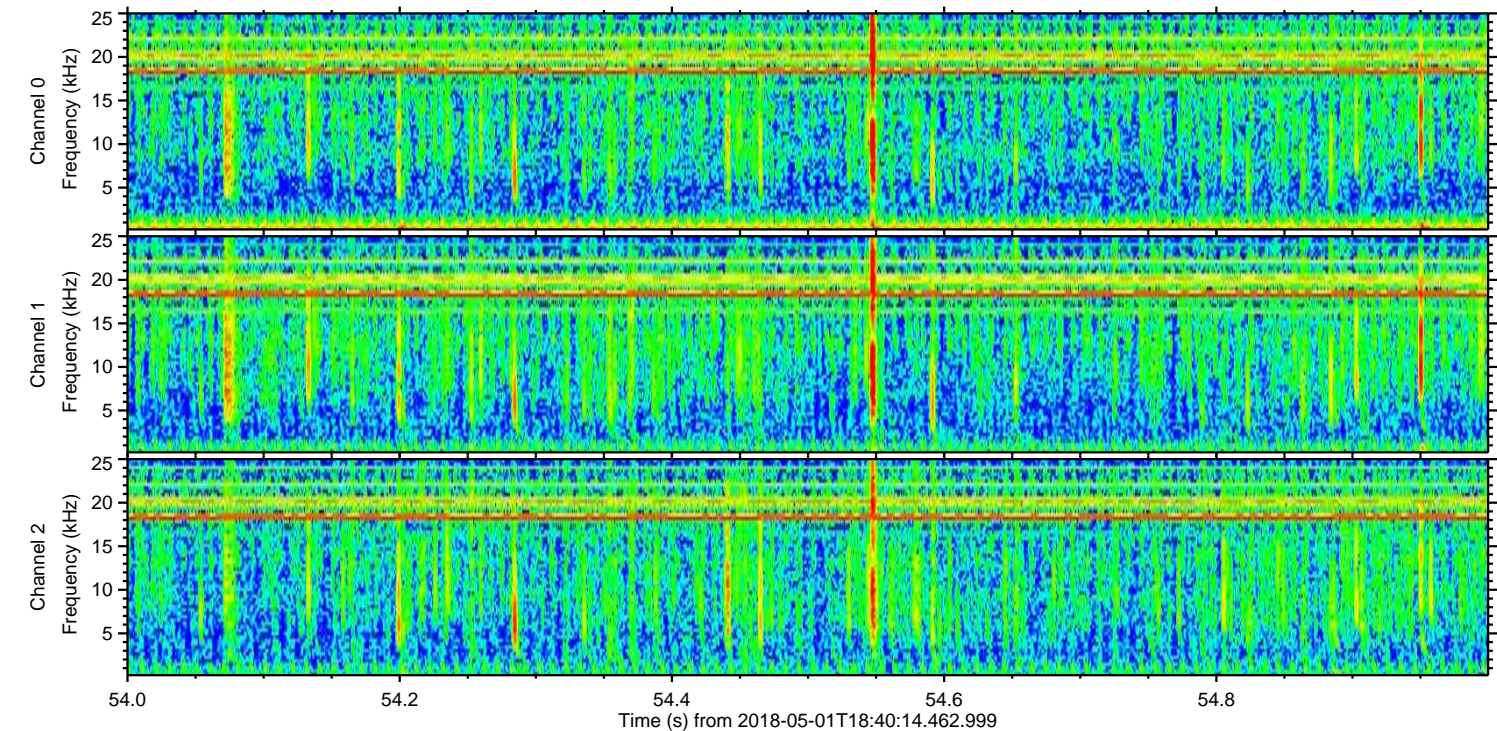
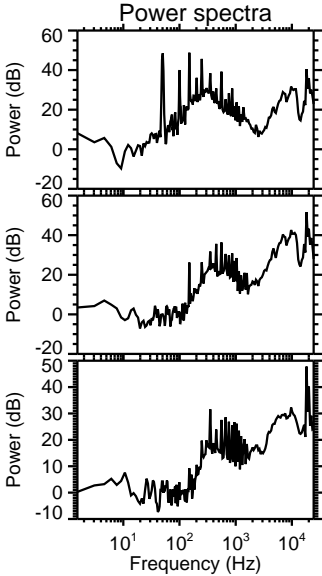
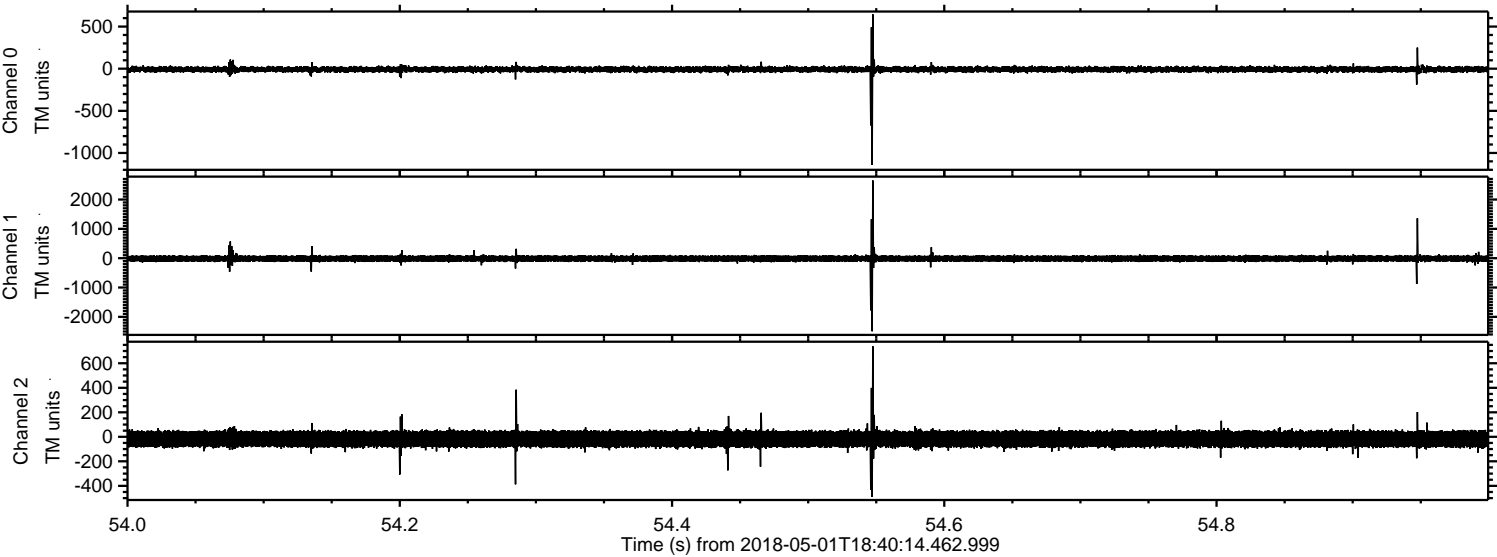


ELMAVAN 3D WAVEFORMS (Measured data sampled at 50 kHz) 51000 packets of 144 samples from 2018-05-01T18:40:14.462.999. Part 9/147

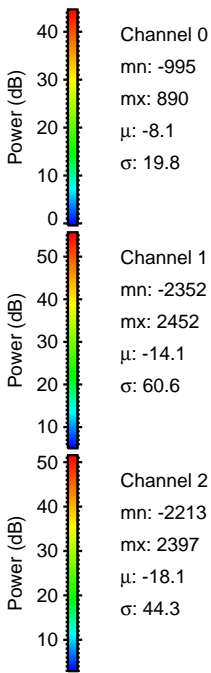
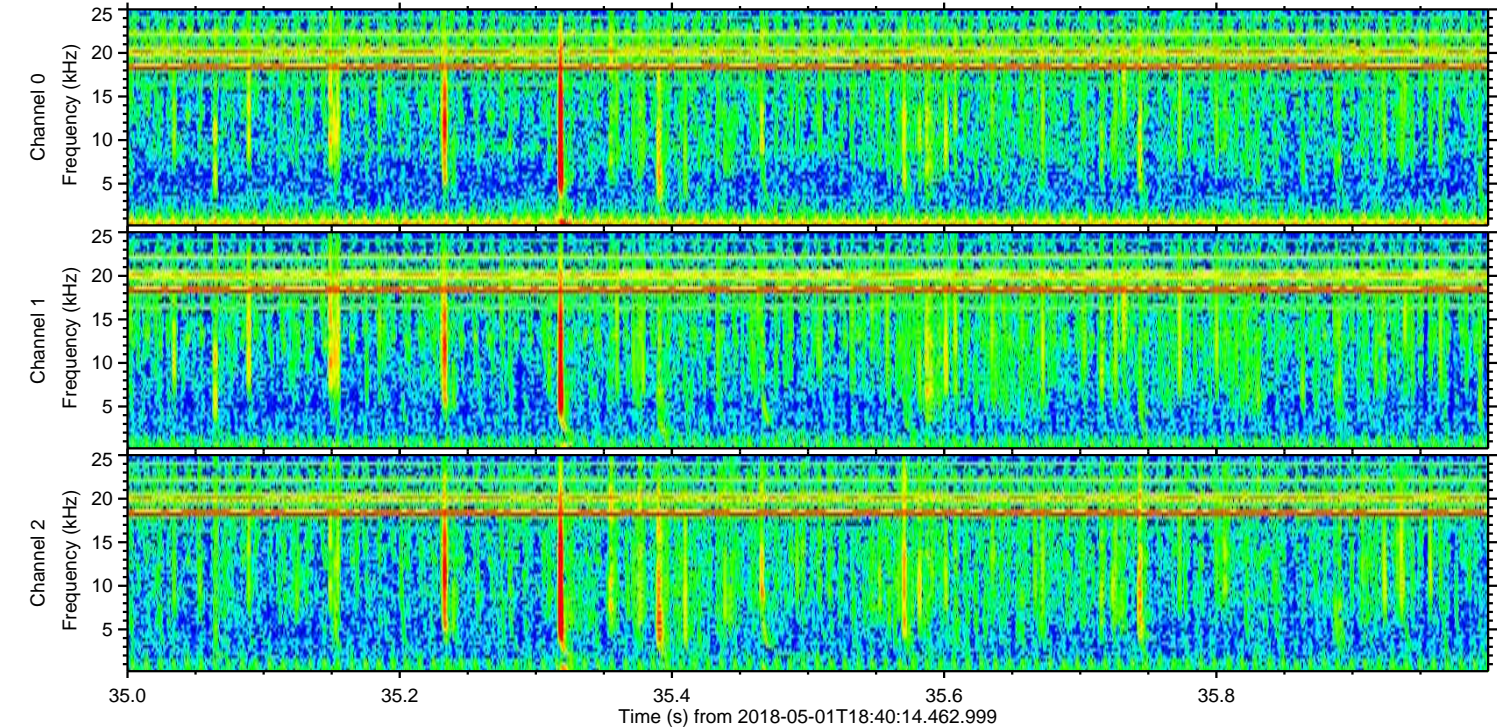
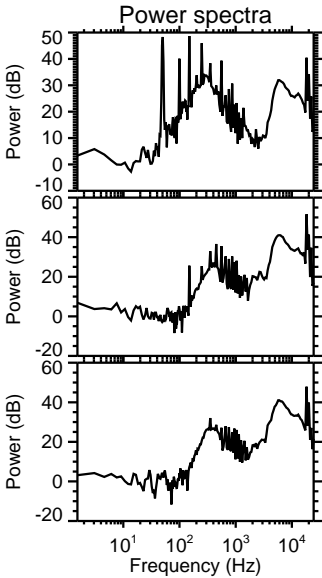
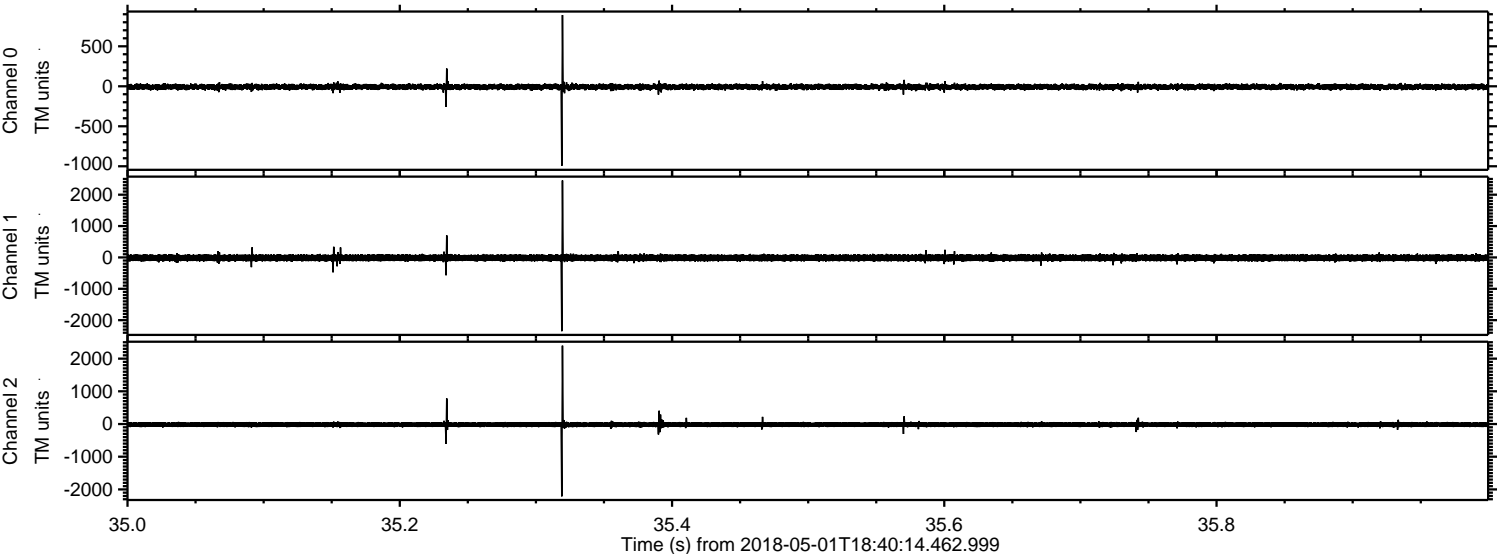
Processed Tue May 1 20:48:05 2018 by ELM ver.2012-10-06 from 001__elm20180501_184013__dat00.bin



Processed Tue May 1 20:48:05 2018 by ELM ver.2012-10-06 from 001__elm20180501_184013__dat00.bin

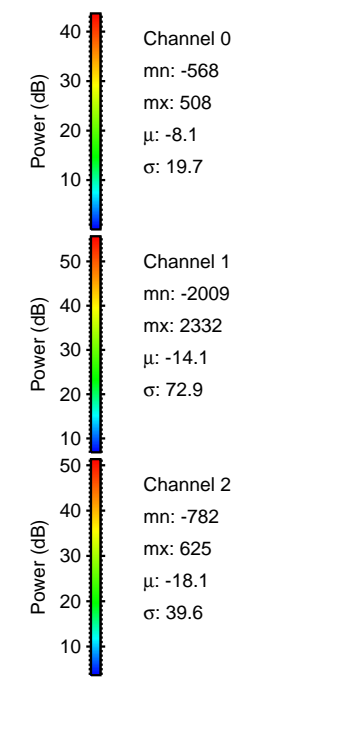
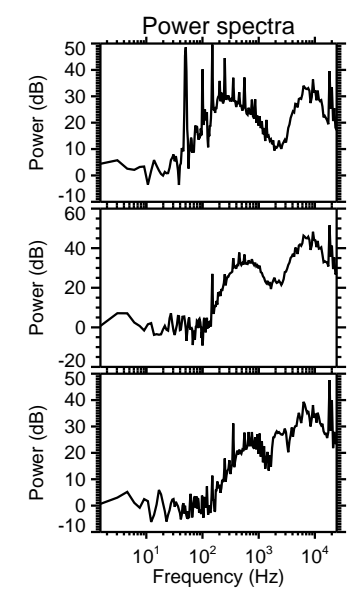
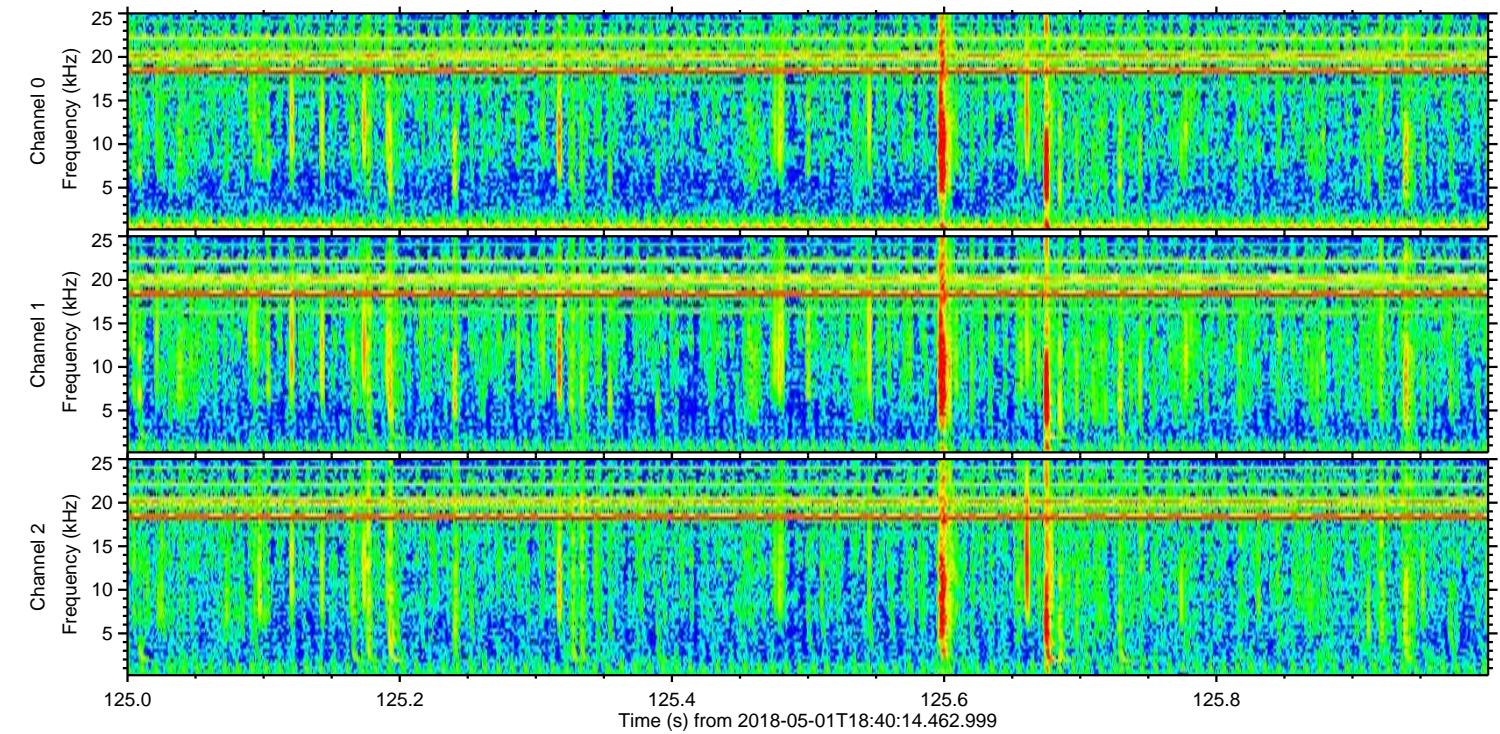
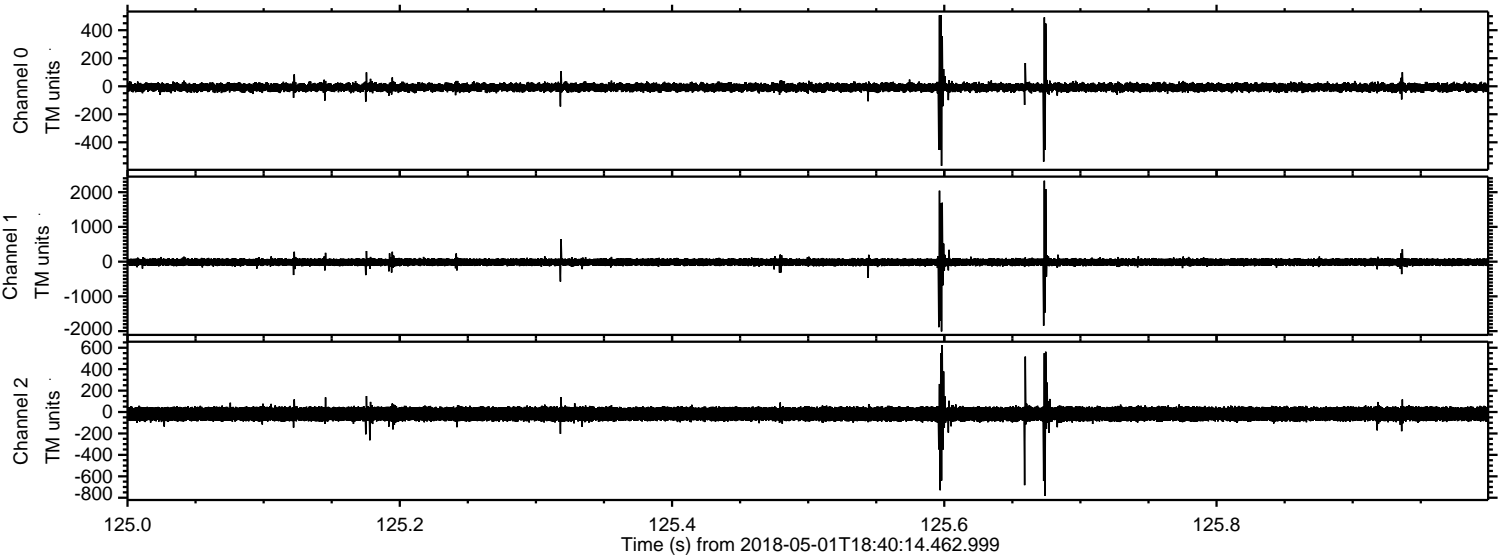


Processed Tue May 1 20:48:06 2018 by ELM ver.2012-10-06 from 001__elm20180501_184013__dat00.bin



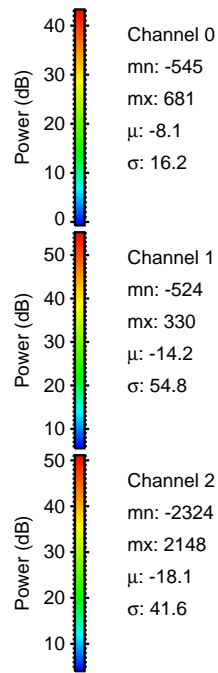
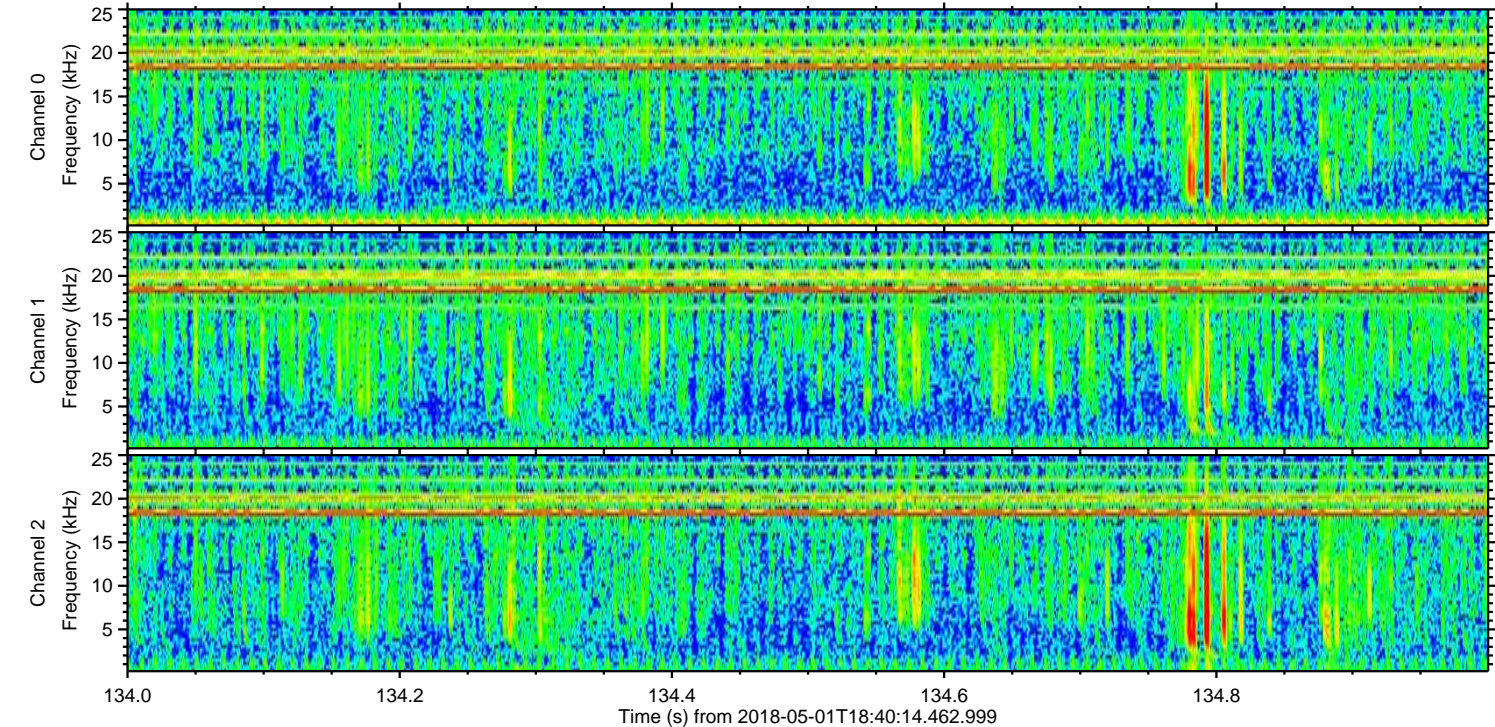
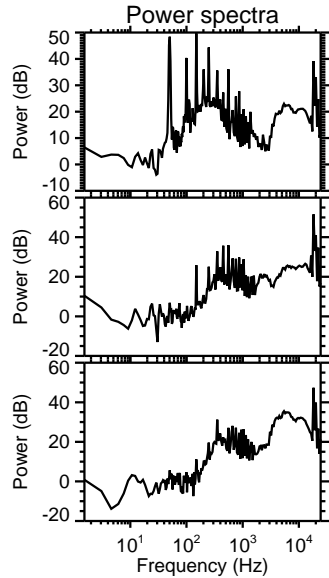
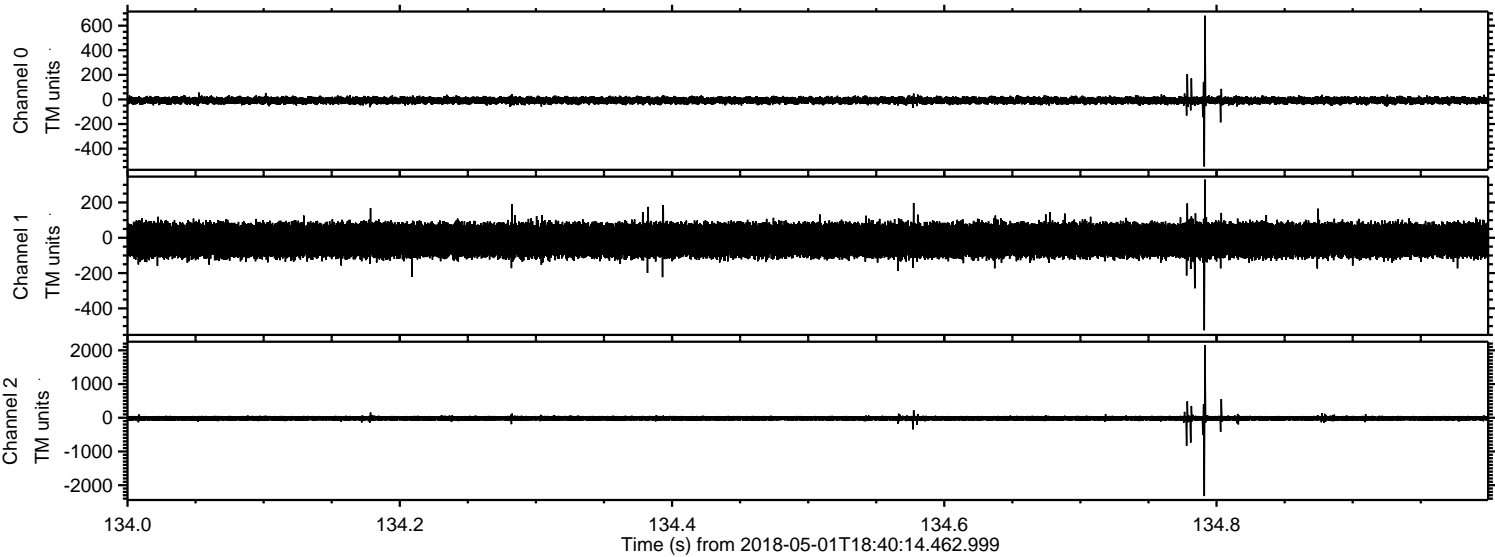
ELMAVAN 3D WAVEFORMS (Measured data sampled at 50 kHz) 51000 packets of 144 samples from 2018-05-01T18:40:14.462.999. Part 126/147

Processed Tue May 1 20:48:07 2018 by ELM ver.2012-10-06 from 001__elm20180501_184013__dat00.bin

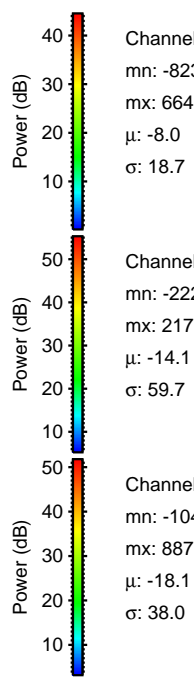
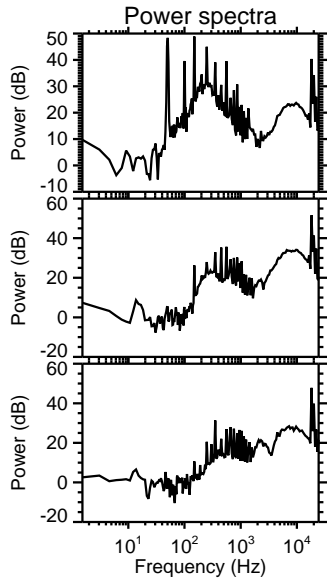
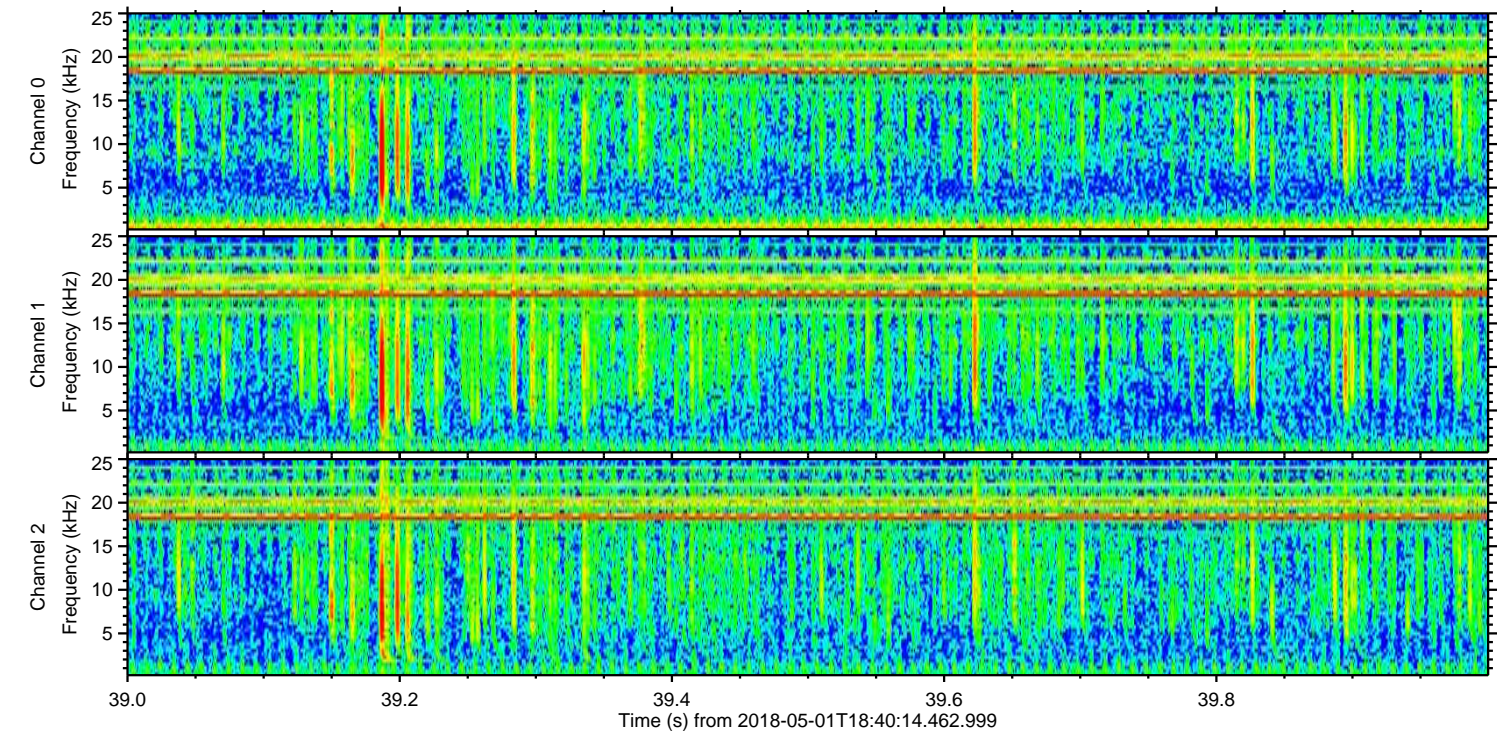
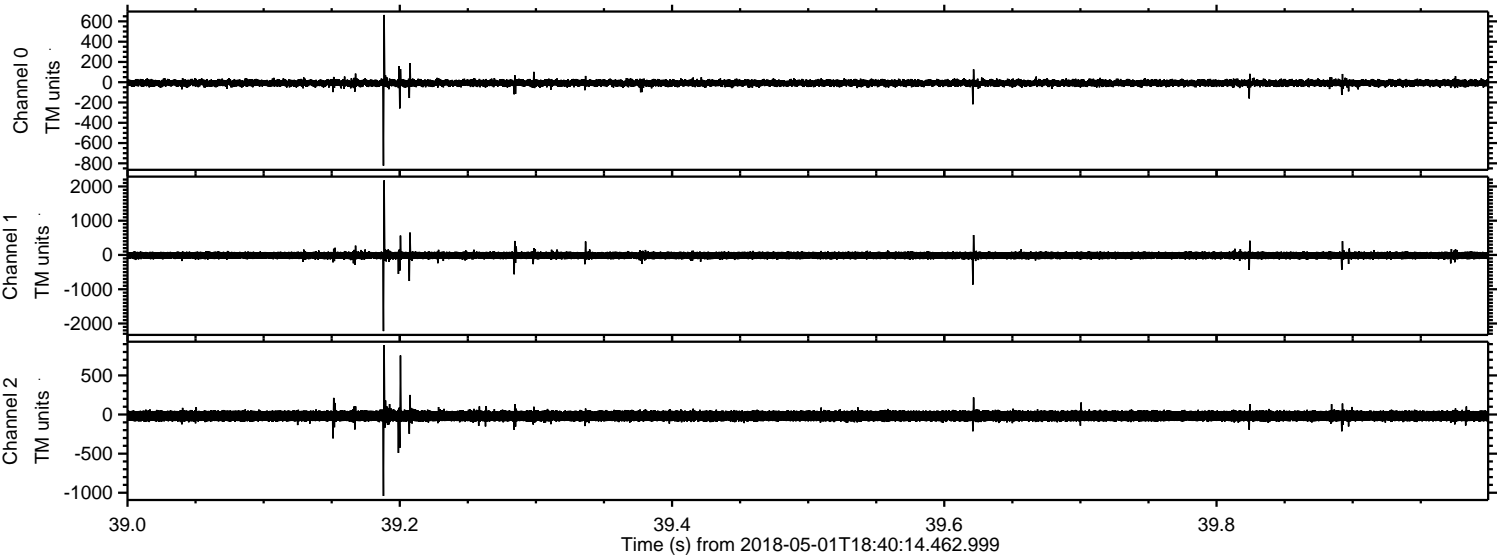


ELMAVAN 3D WAVEFORMS (Measured data sampled at 50 kHz) 51000 packets of 144 samples from 2018-05-01T18:40:14.462.999. Part 135/147

Processed Tue May 1 20:48:07 2018 by ELM ver.2012-10-06 from 001__elm20180501_184013__dat00.bin



Processed Tue May 1 20:48:08 2018 by ELM ver.2012-10-06 from 001__elm20180501_184013__dat00.bin



Channel 0
mn: -823
mx: 664
 μ : -8.0
 σ : 18.7

Channel 1
mn: -2222
mx: 2177
 μ : -14.1
 σ : 59.7

Channel 2
mn: -1041
mx: 887
 μ : -18.1
 σ : 38.0

Processed Tue May 1 20:48:09 2018 by ELM ver.2012-10-06 from 001__elm20180501_184013__dat00.bin

