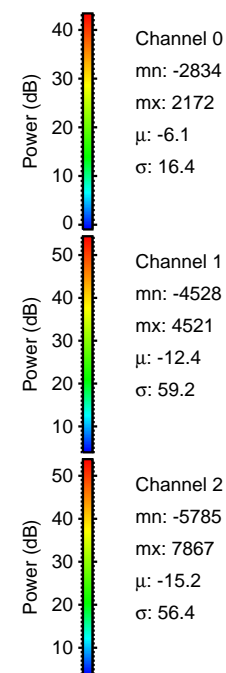
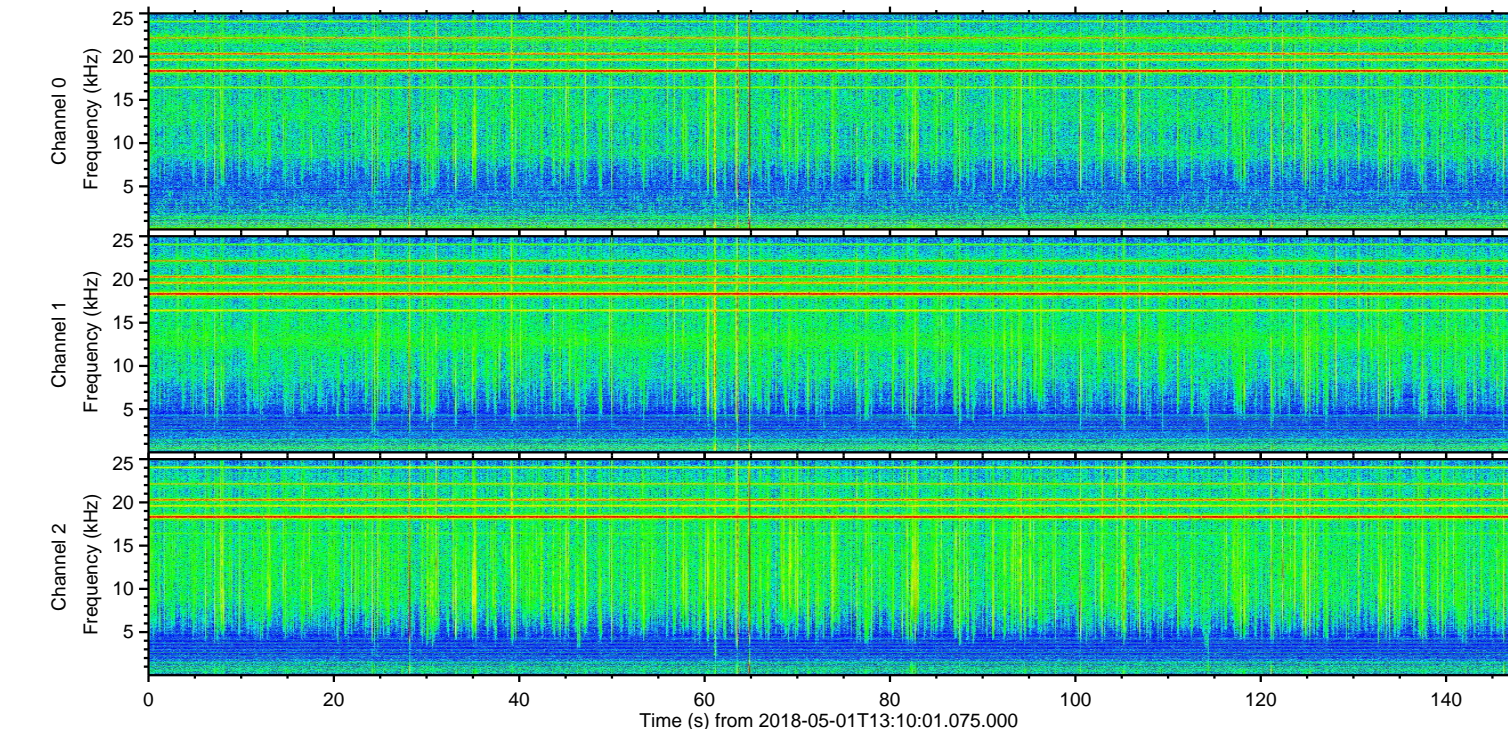
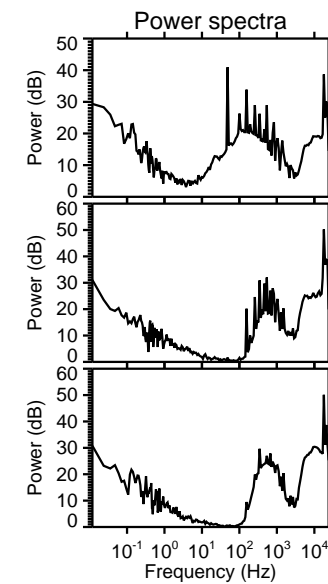
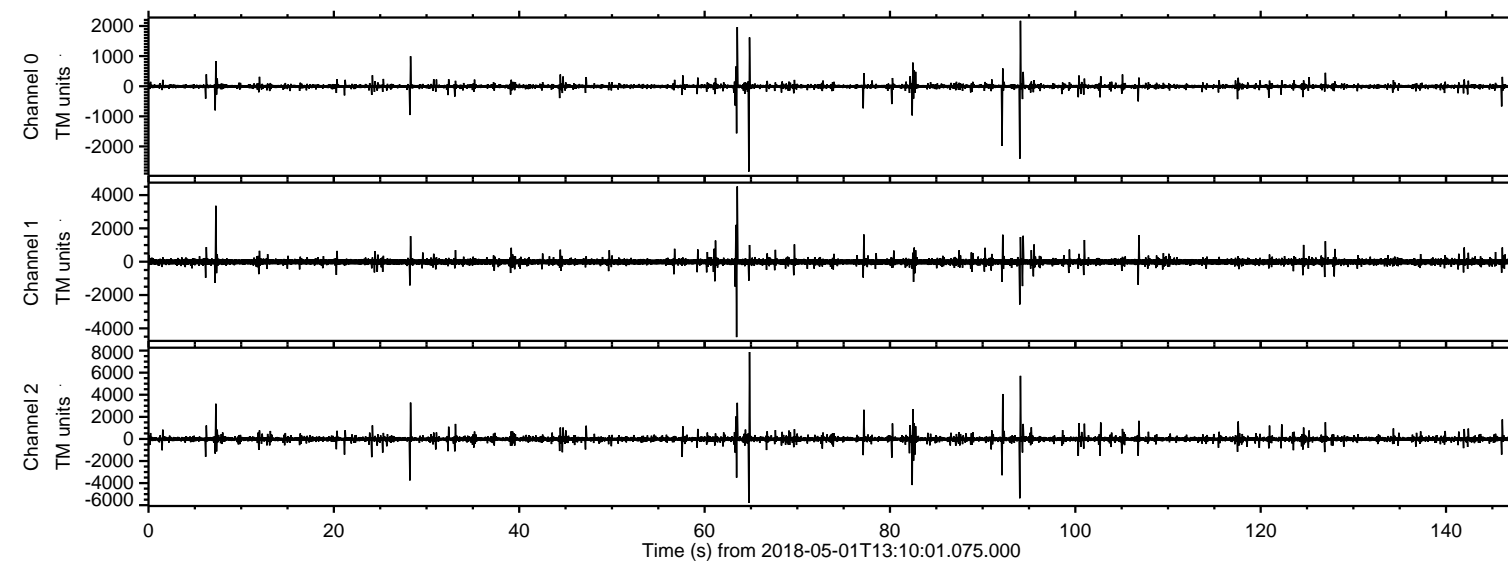
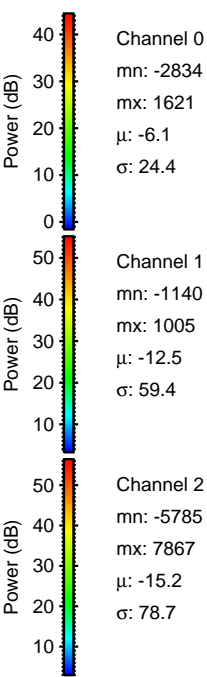
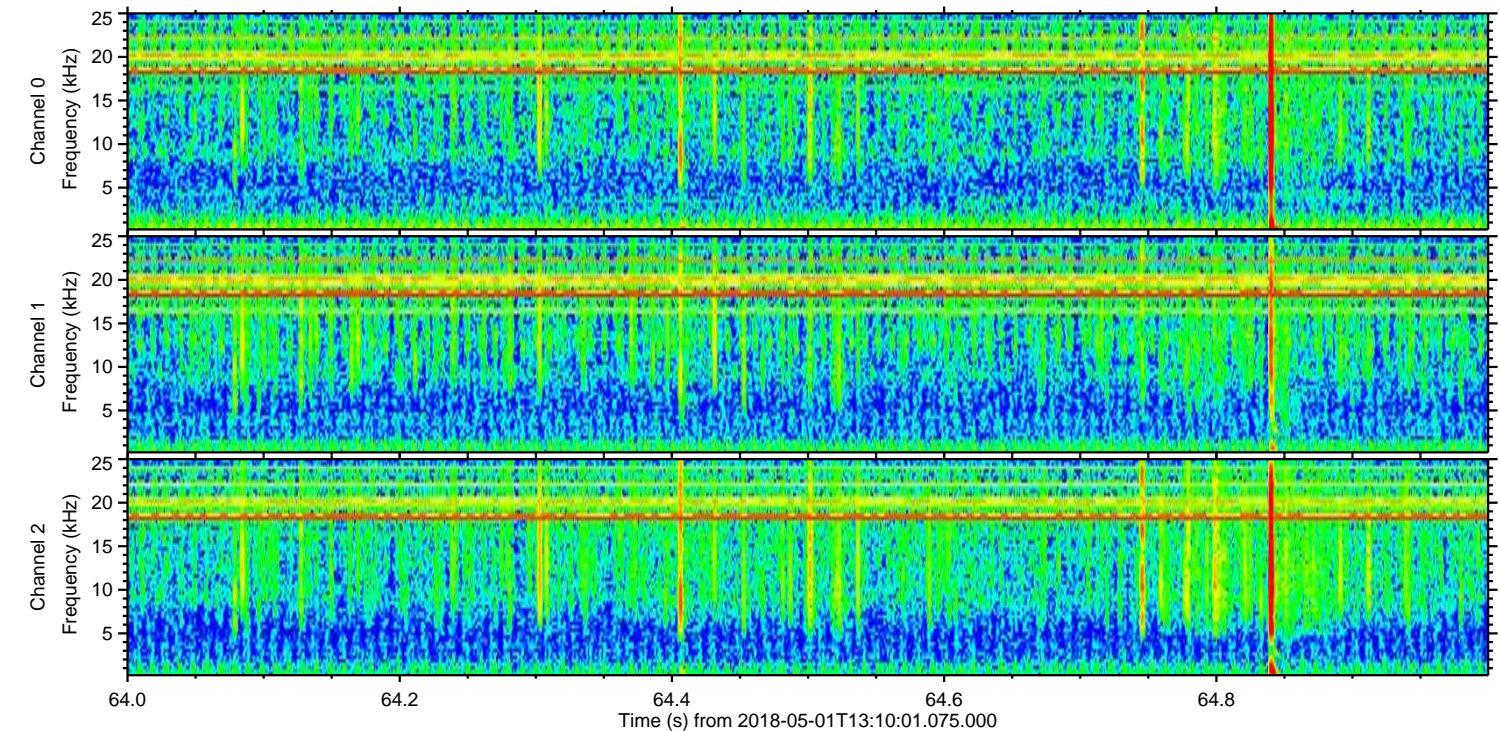
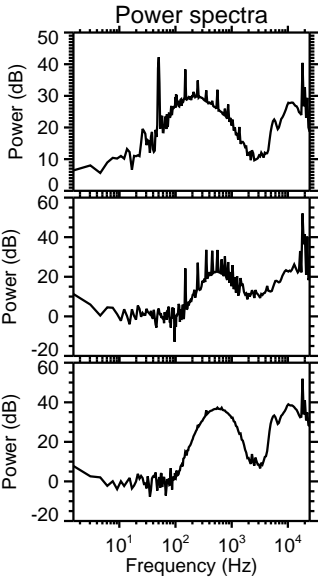
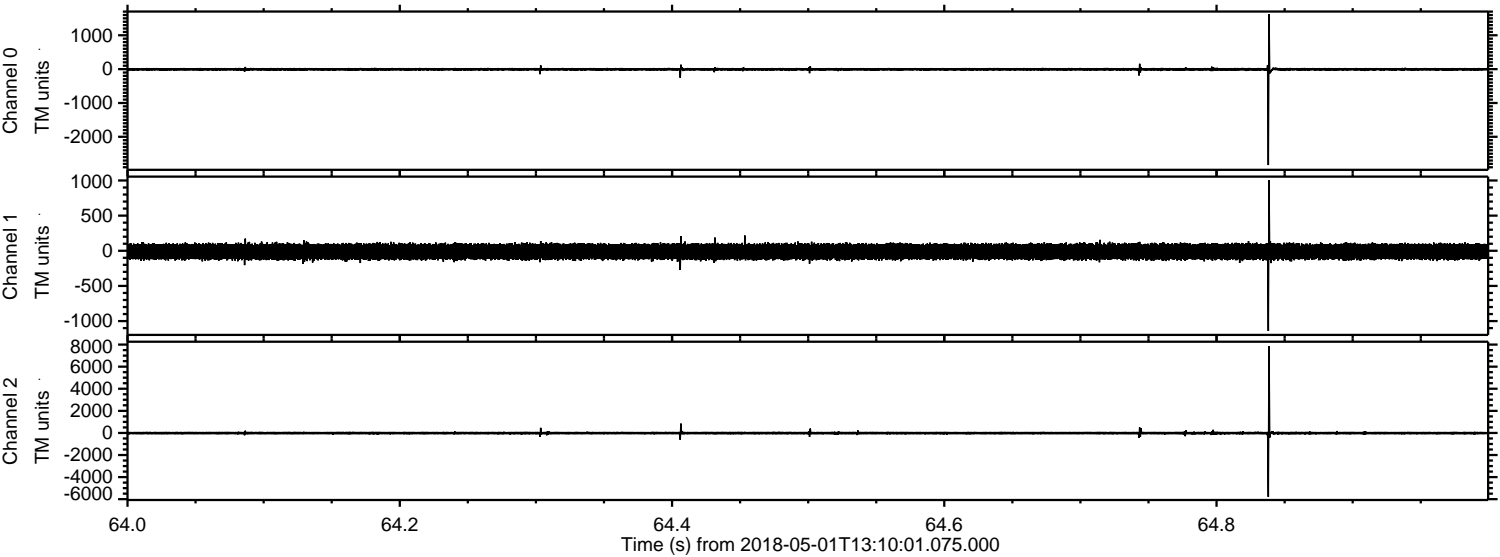


ELMAVAN 3D WAVEFORMS (Measured data sampled at 50 kHz) 51000 packets of 144 samples from 2018-05-01T13:10:01.075.000.

Processed Tue May 1 15:18:42 2018 by ELM ver.2012-10-06 from 001__elm20180501_131000__dat00.bin



Processed Tue May 1 15:18:47 2018 by ELM ver.2012-10-06 from 001__elm20180501_131000__dat00.bin

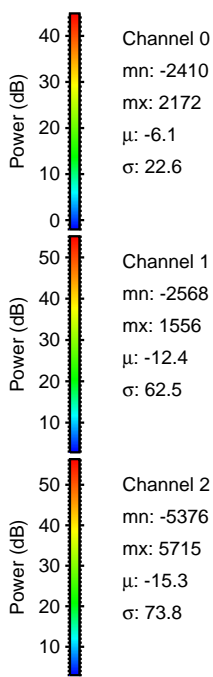
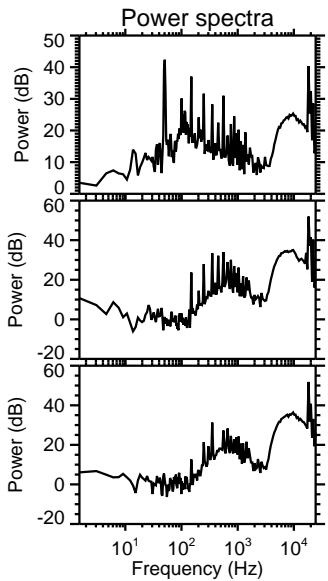
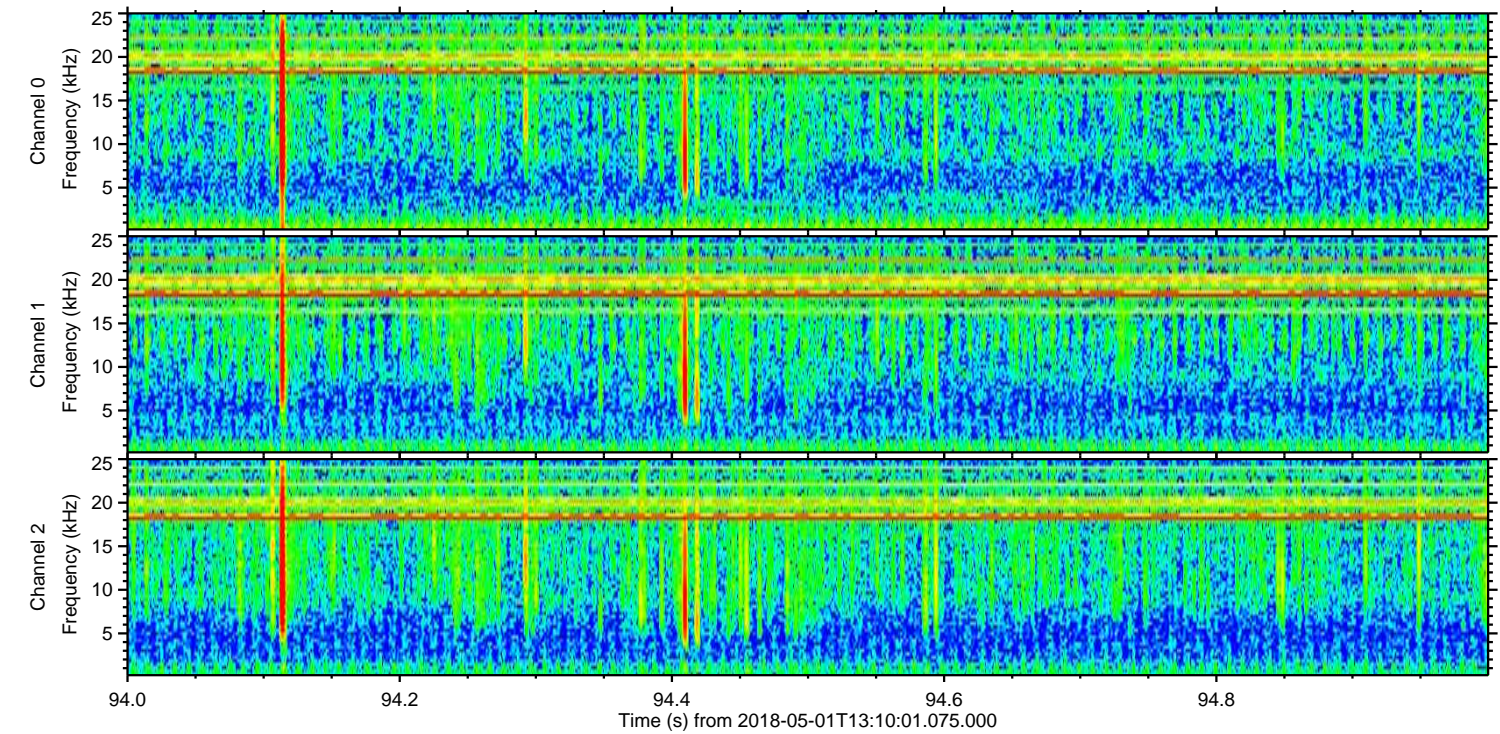
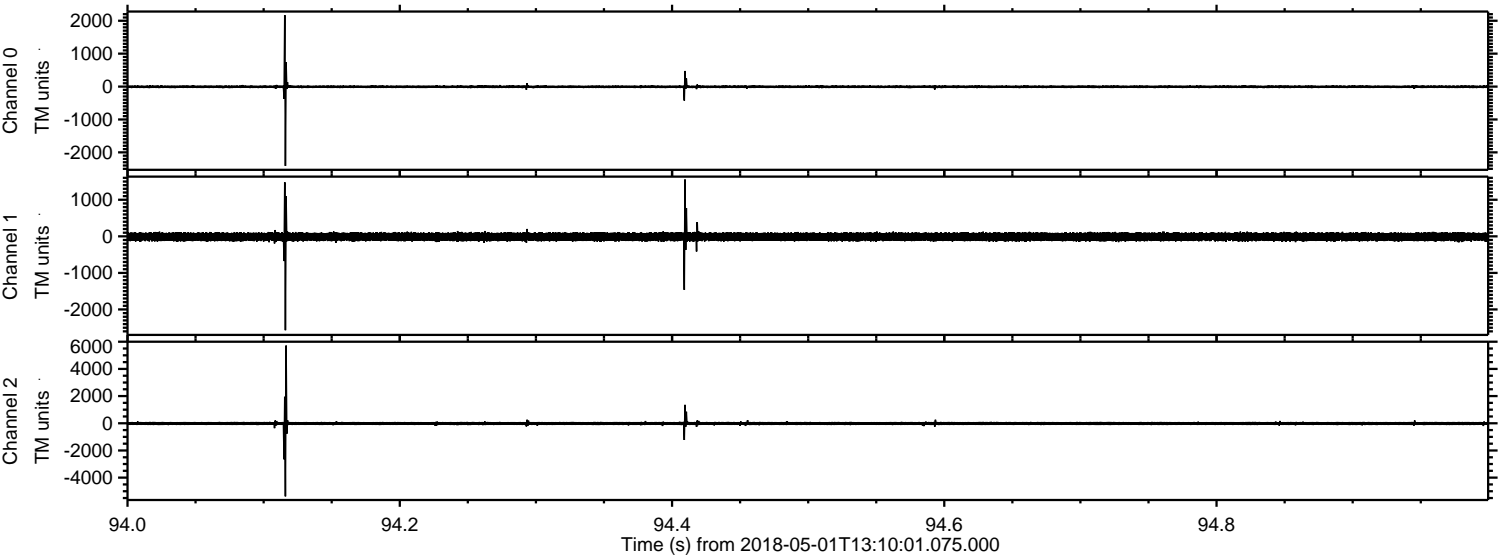


Channel 0
mn: -2834
mx: 1621
 μ : -6.1
 σ : 24.4

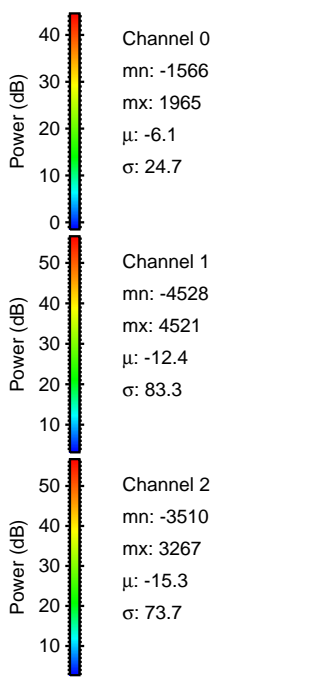
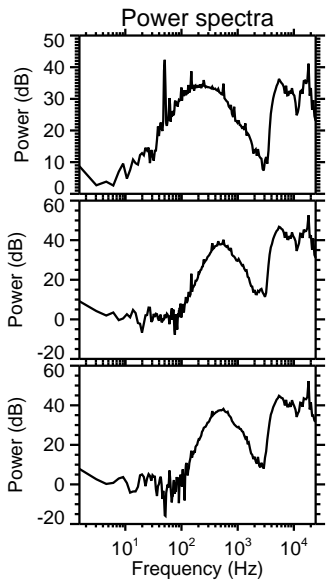
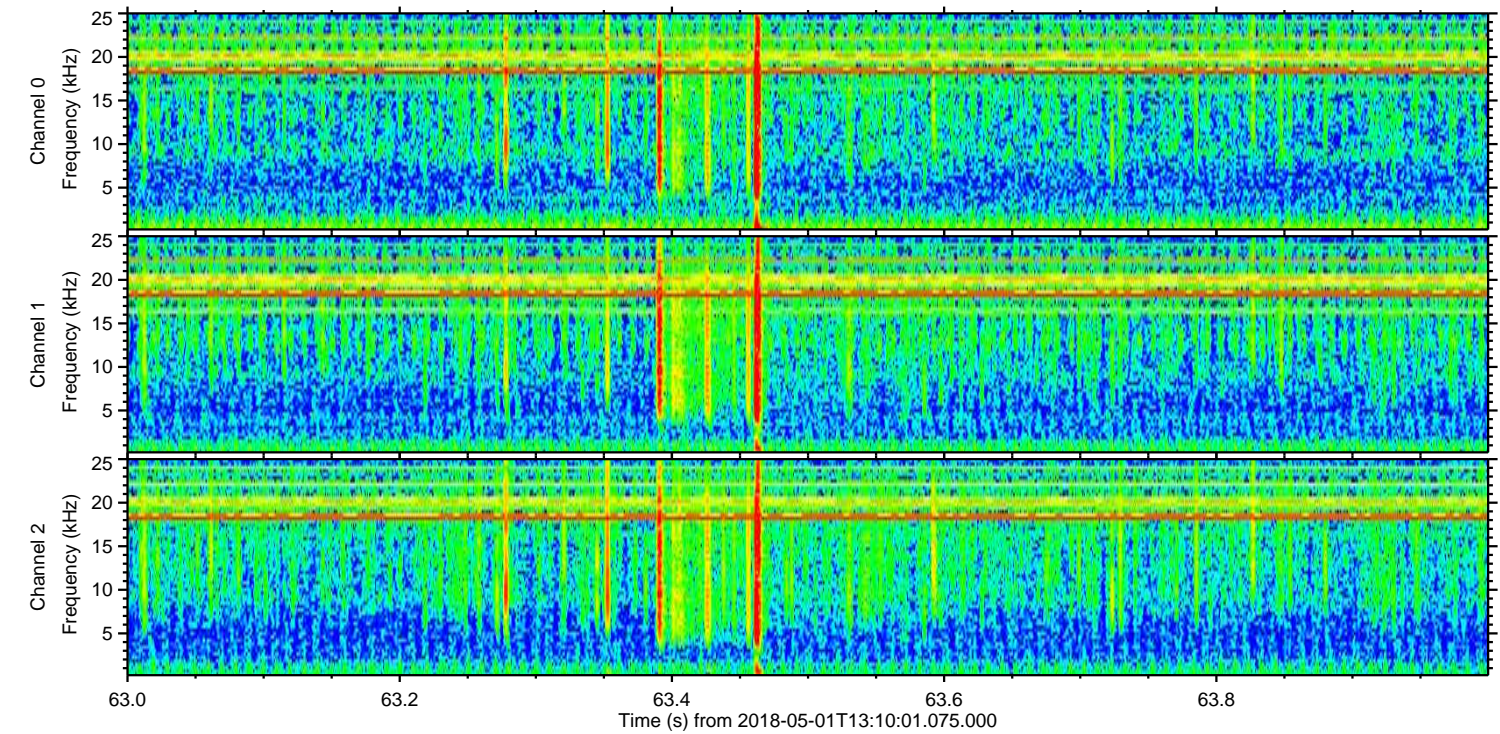
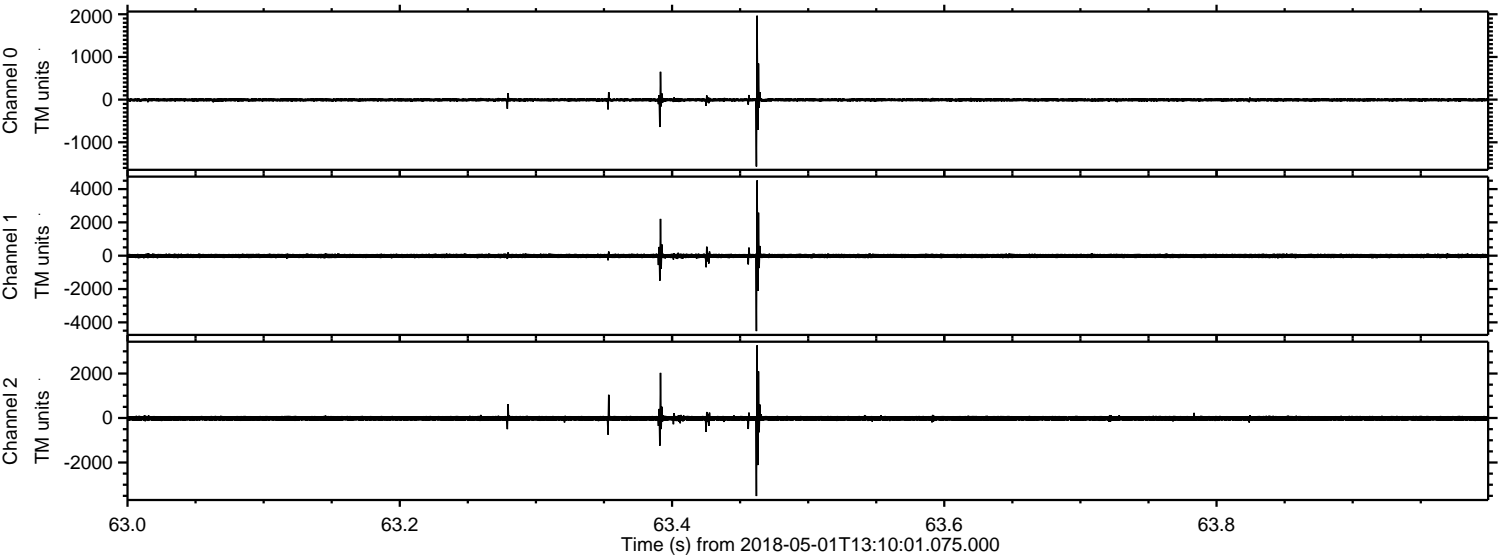
Channel 1
mn: -1140
mx: 1005
 μ : -12.5
 σ : 59.4

Channel 2
mn: -5785
mx: 7867
 μ : -15.2
 σ : 78.7

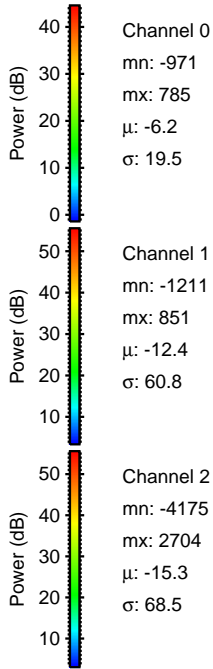
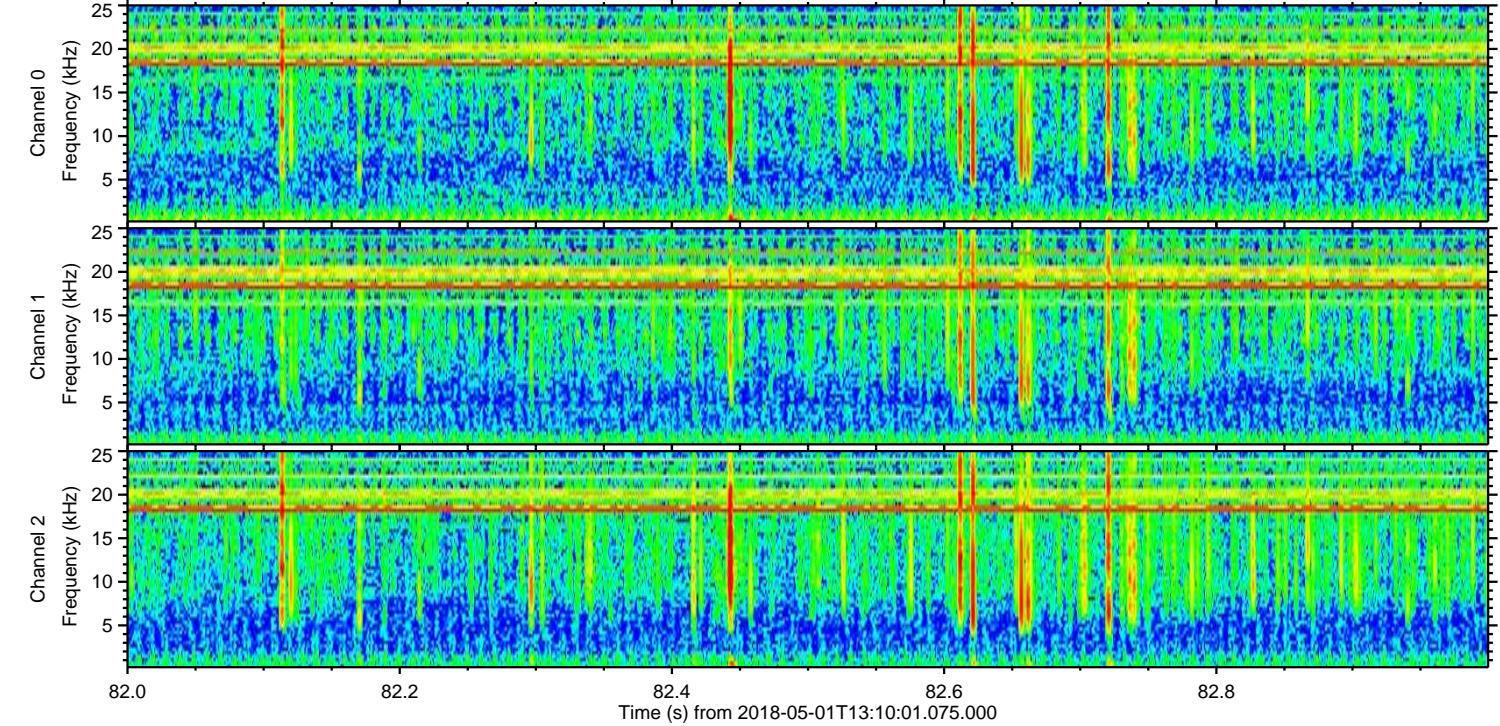
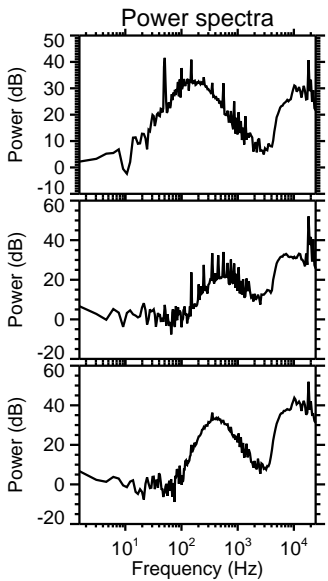
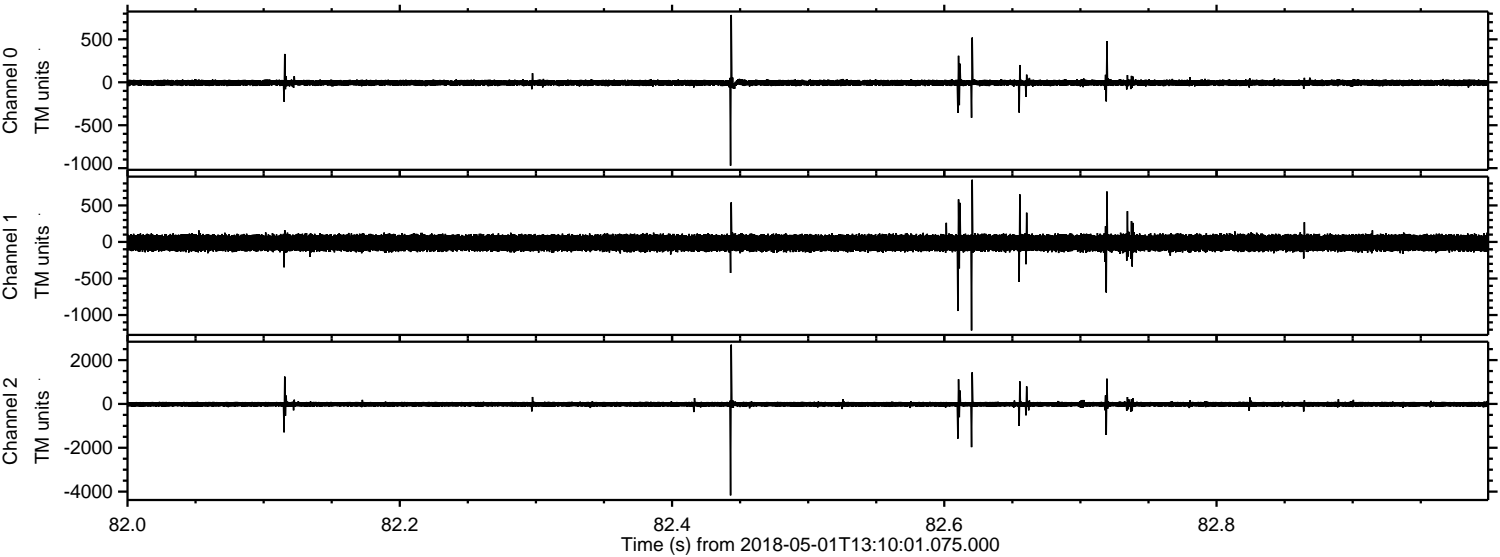
Processed Tue May 1 15:18:48 2018 by ELM ver.2012-10-06 from 001__elm20180501_131000__dat00.bin



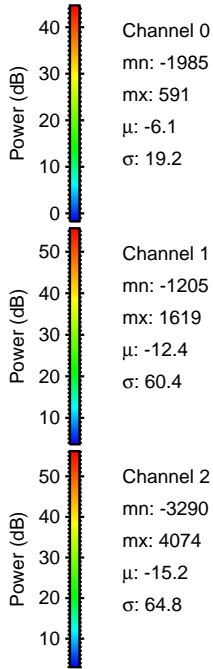
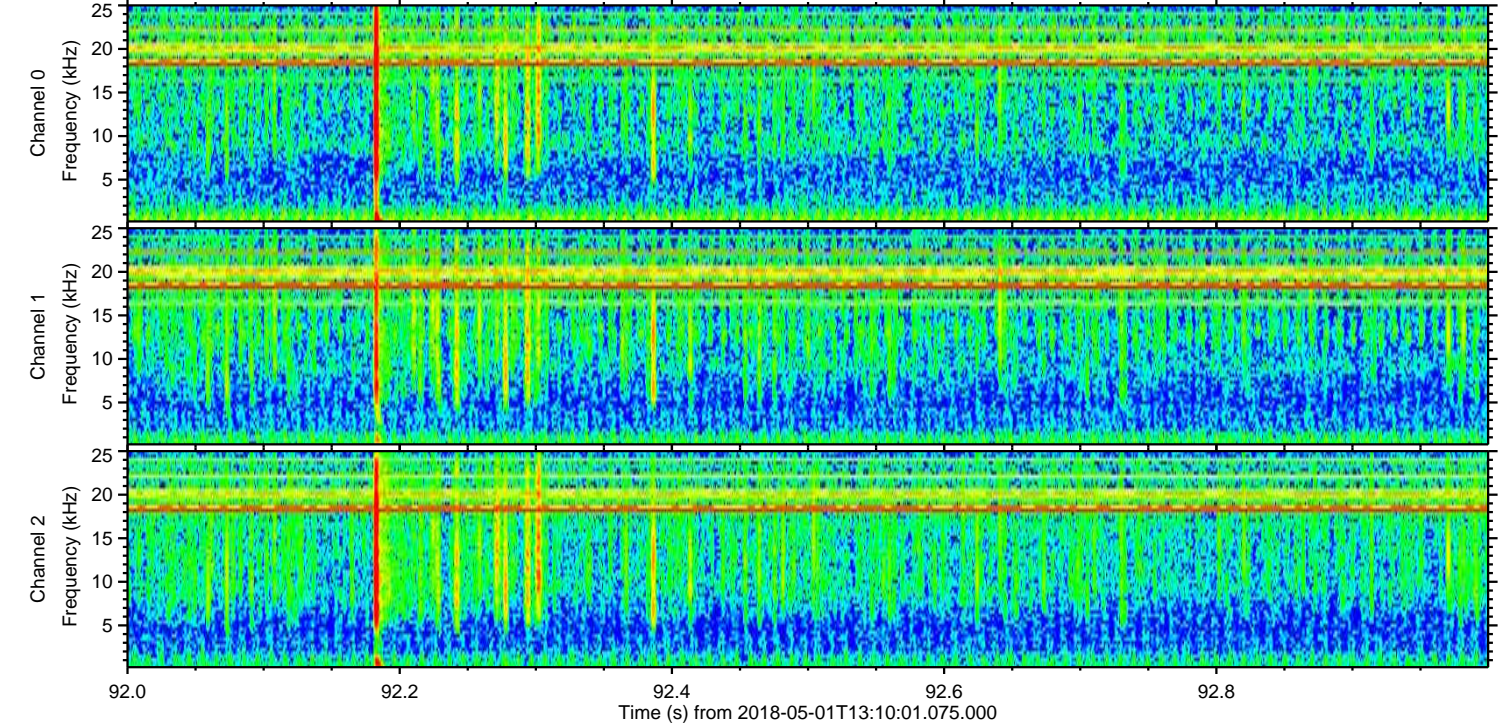
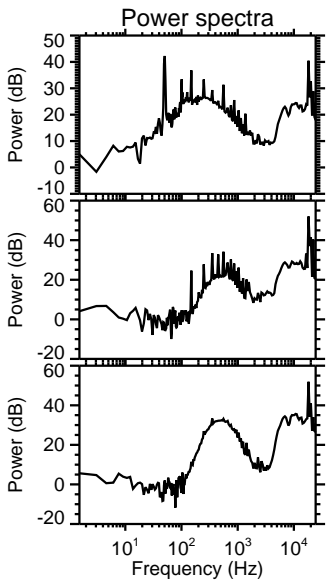
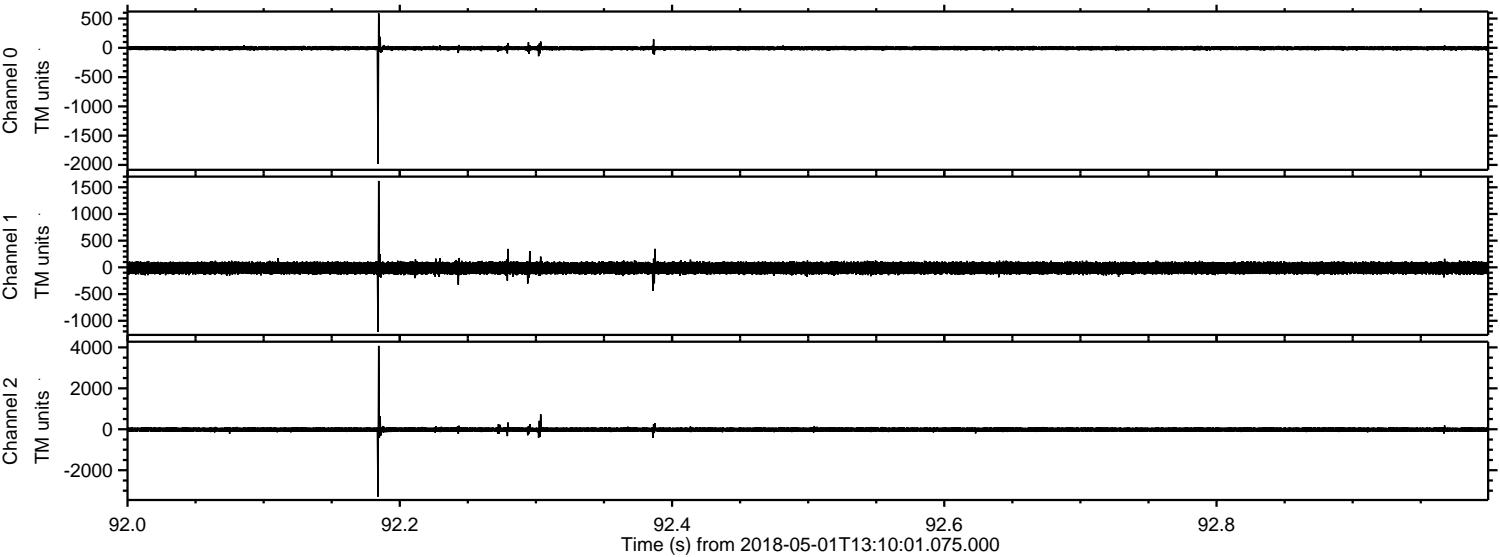
Processed Tue May 1 15:18:49 2018 by ELM ver.2012-10-06 from 001__elm20180501_131000__dat00.bin



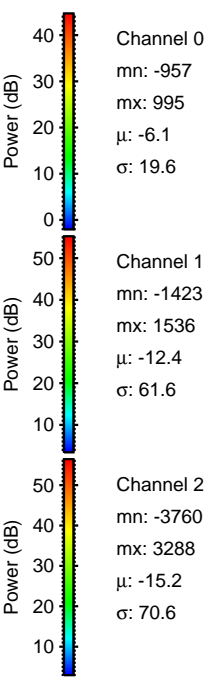
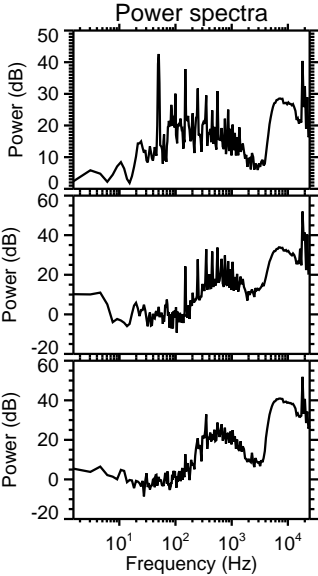
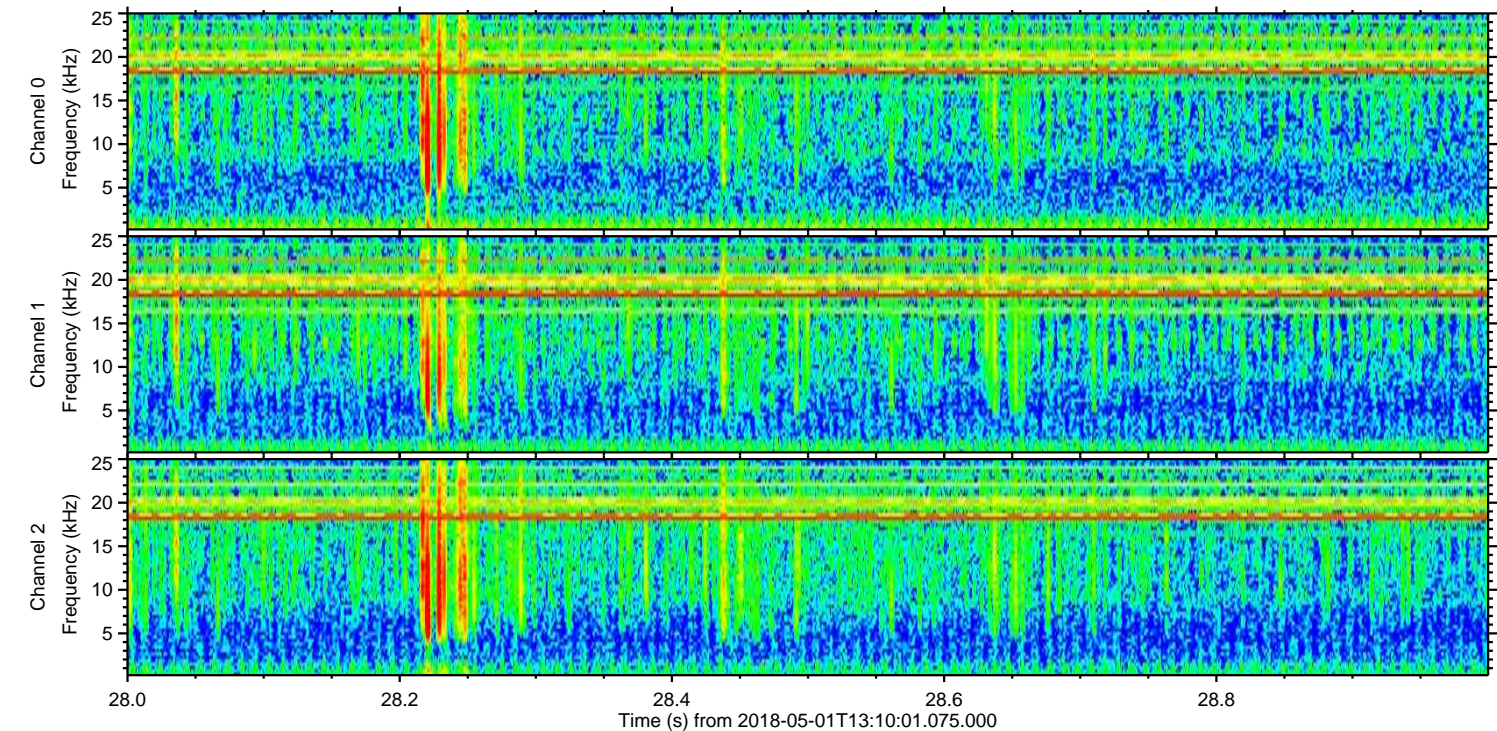
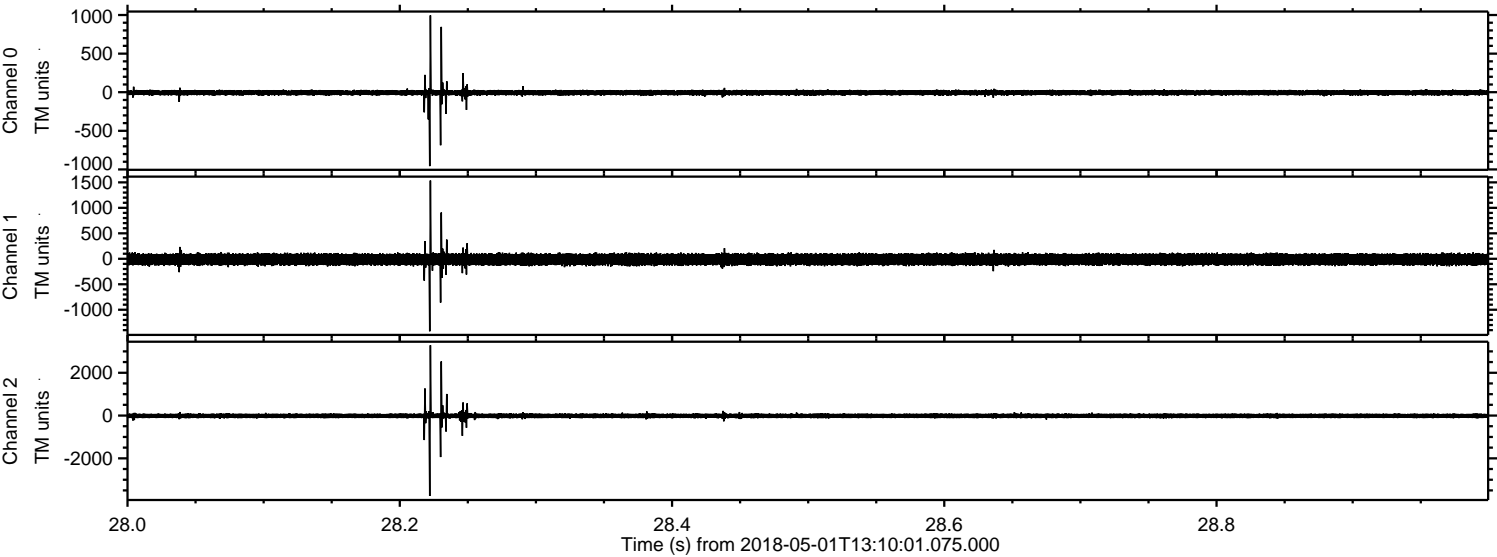
Processed Tue May 1 15:18:50 2018 by ELM ver.2012-10-06 from 001__elm20180501_131000__dat00.bin



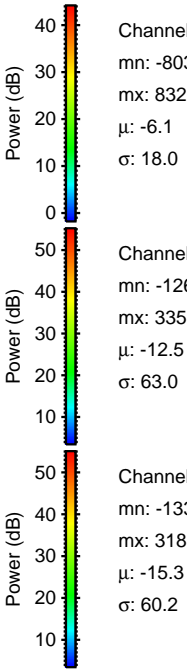
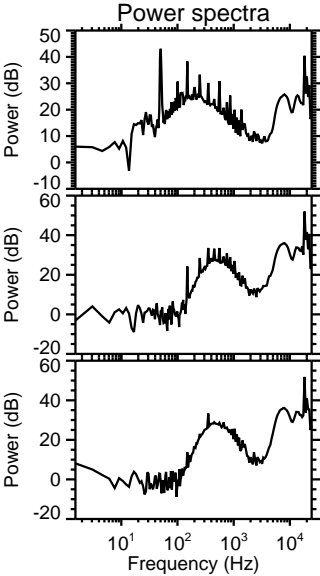
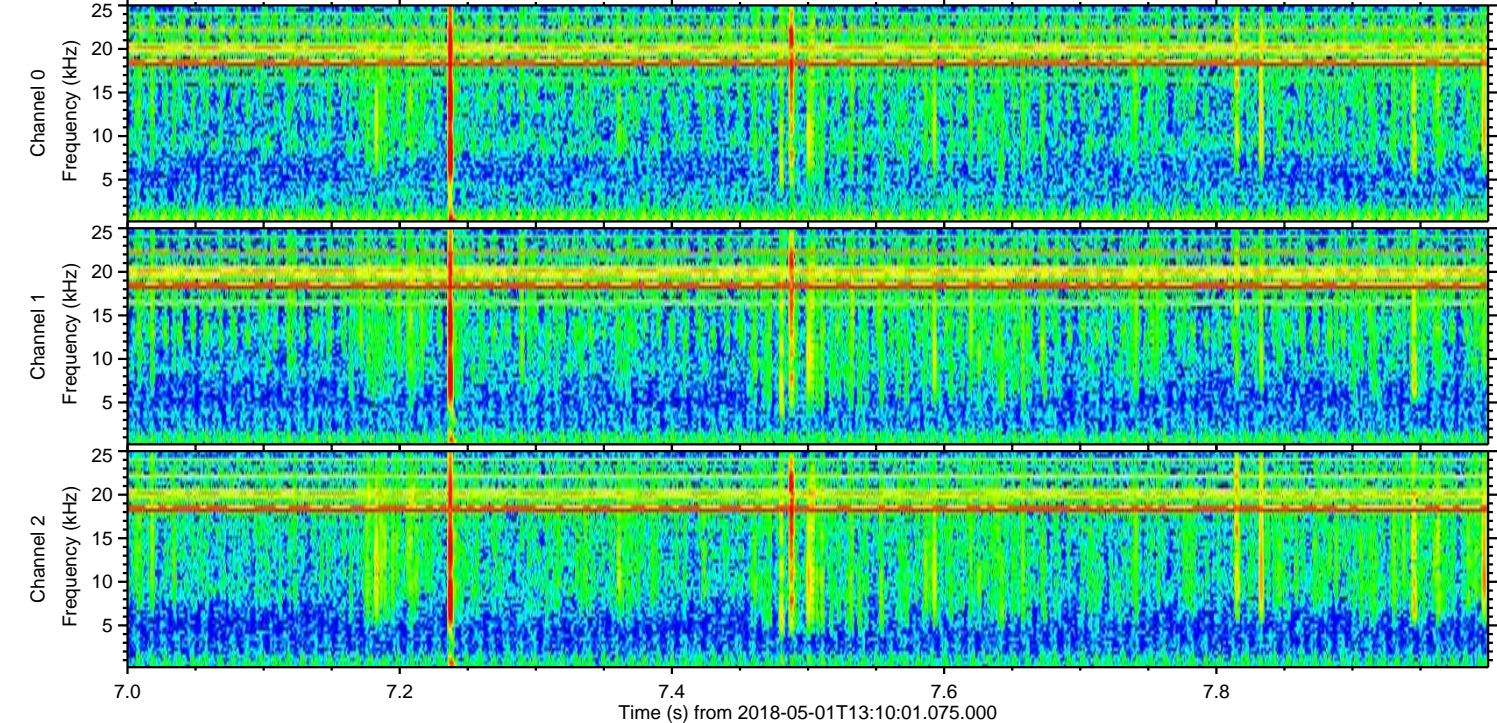
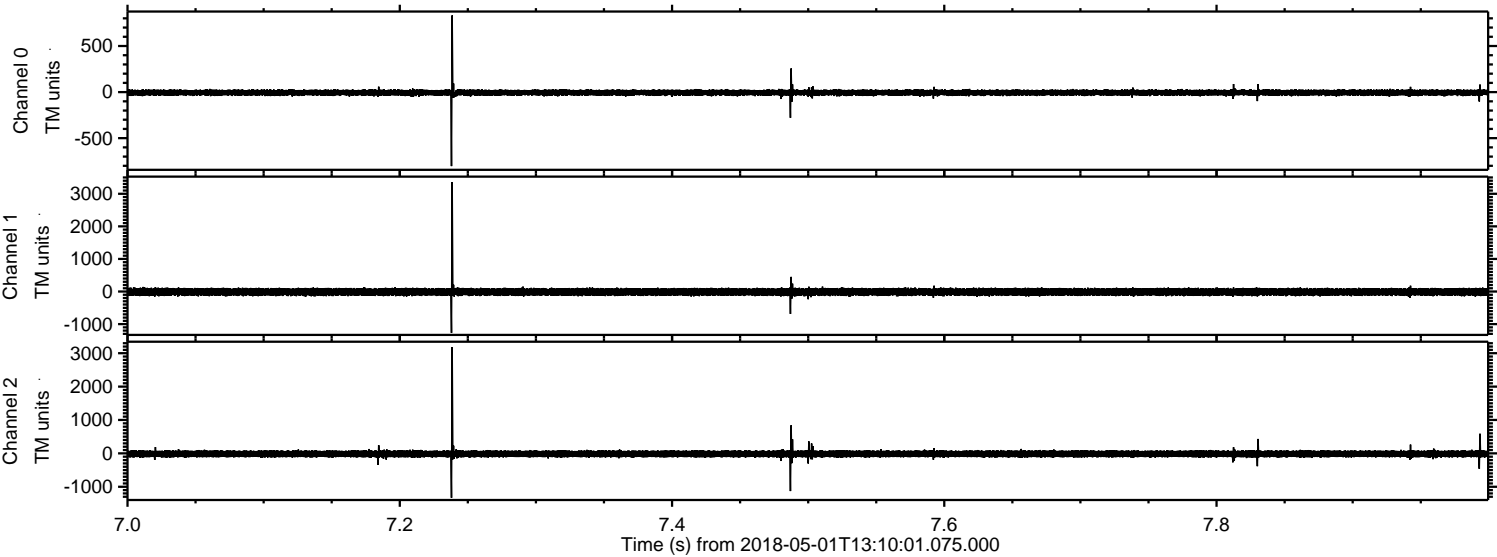
Processed Tue May 1 15:18:50 2018 by ELM ver.2012-10-06 from 001__elm20180501_131000__dat00.bin



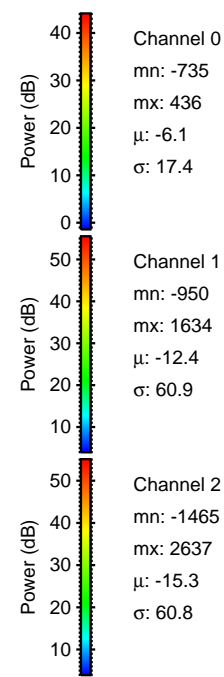
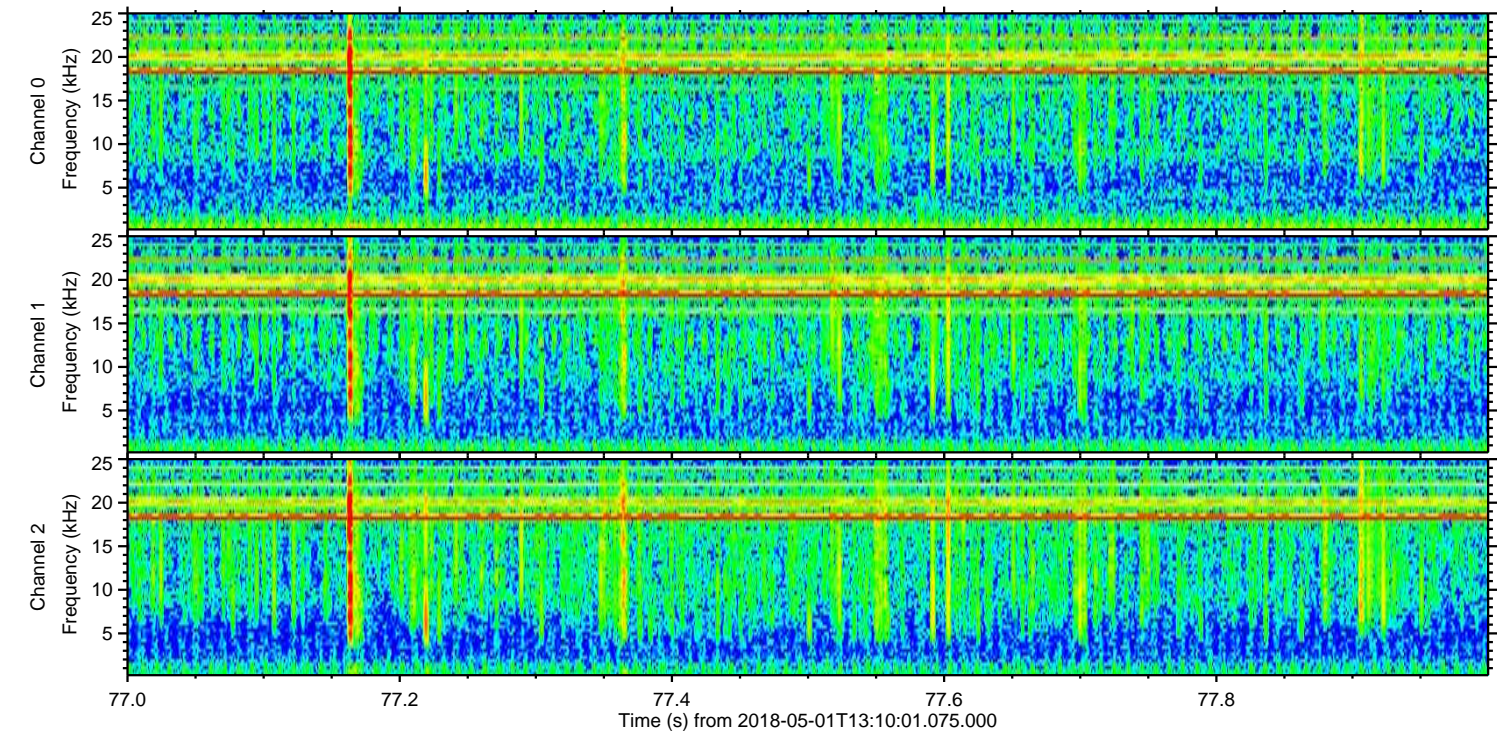
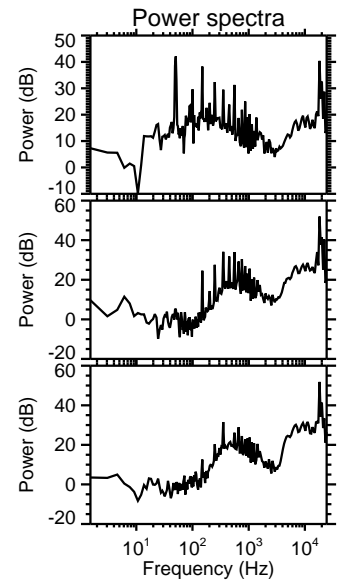
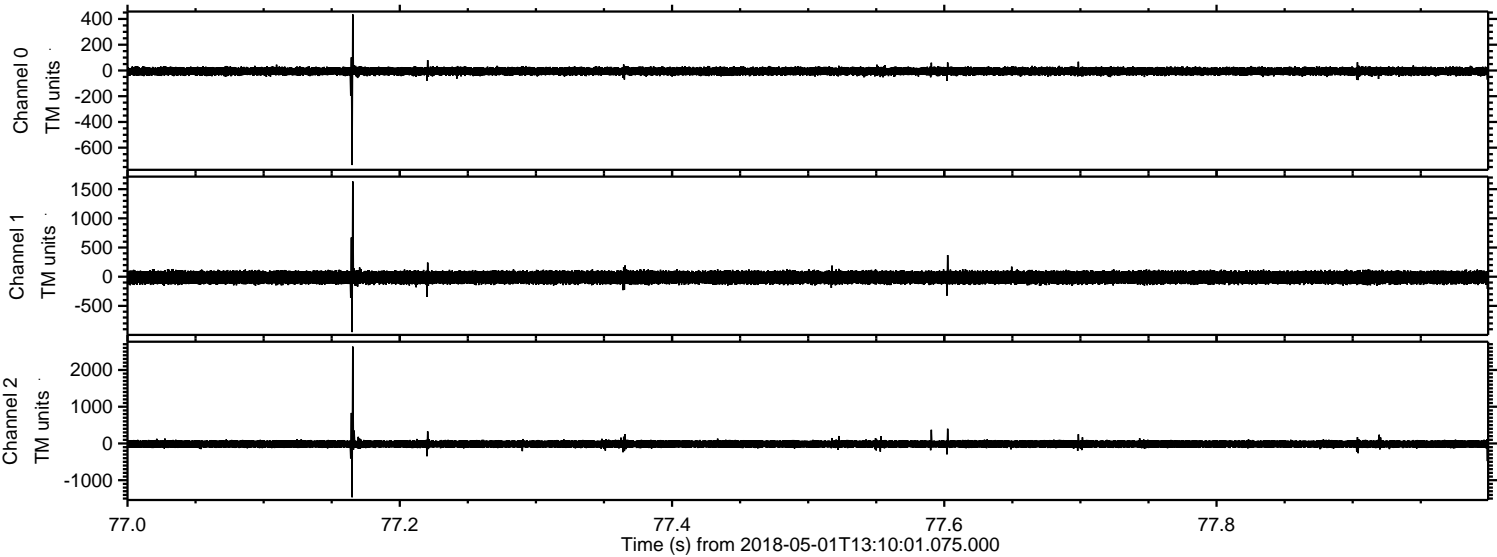
Processed Tue May 1 15:18:51 2018 by ELM ver.2012-10-06 from 001__elm20180501_131000__dat00.bin



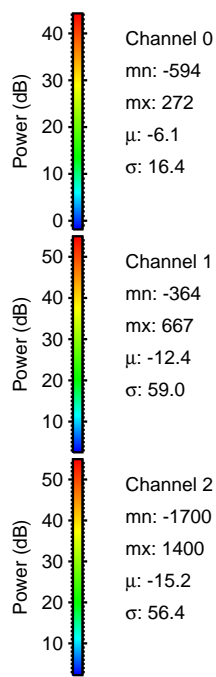
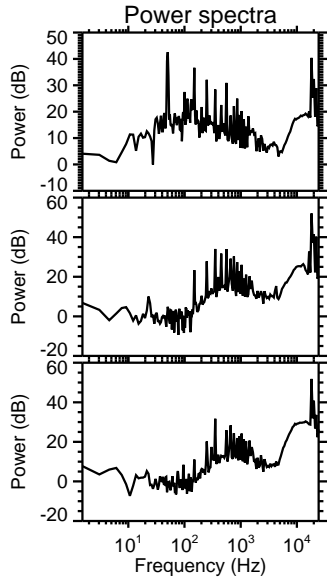
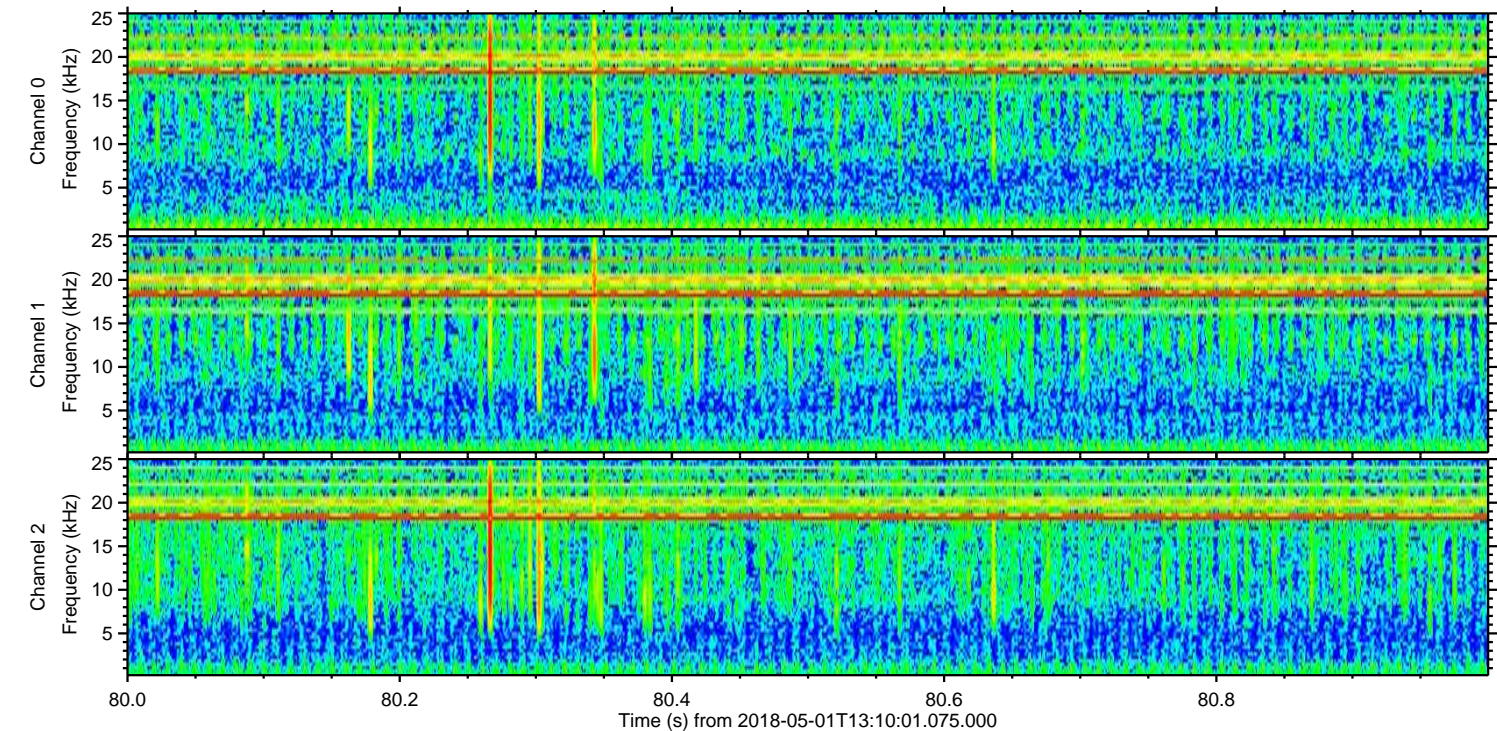
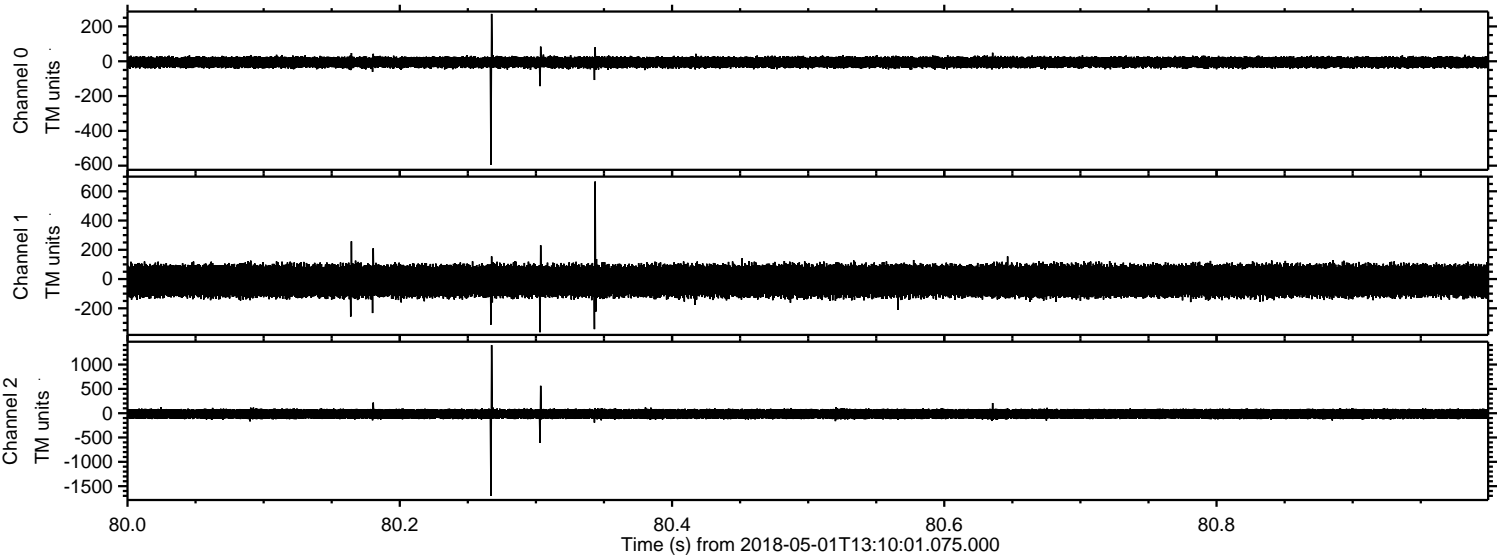
Processed Tue May 1 15:18:51 2018 by ELM ver.2012-10-06 from 001__elm20180501_131000__dat00.bin



Processed Tue May 1 15:18:52 2018 by ELM ver.2012-10-06 from 001__elm20180501_131000__dat00.bin



Processed Tue May 1 15:18:53 2018 by ELM ver.2012-10-06 from 001__elm20180501_131000__dat00.bin



Processed Tue May 1 15:18:53 2018 by ELM ver.2012-10-06 from 001__elm20180501_131000__dat00.bin

