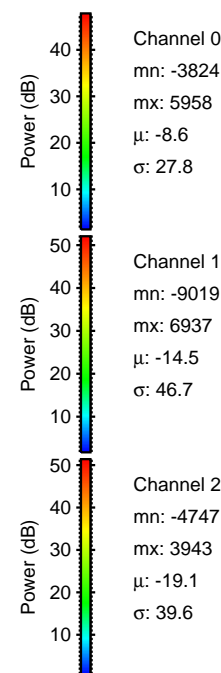
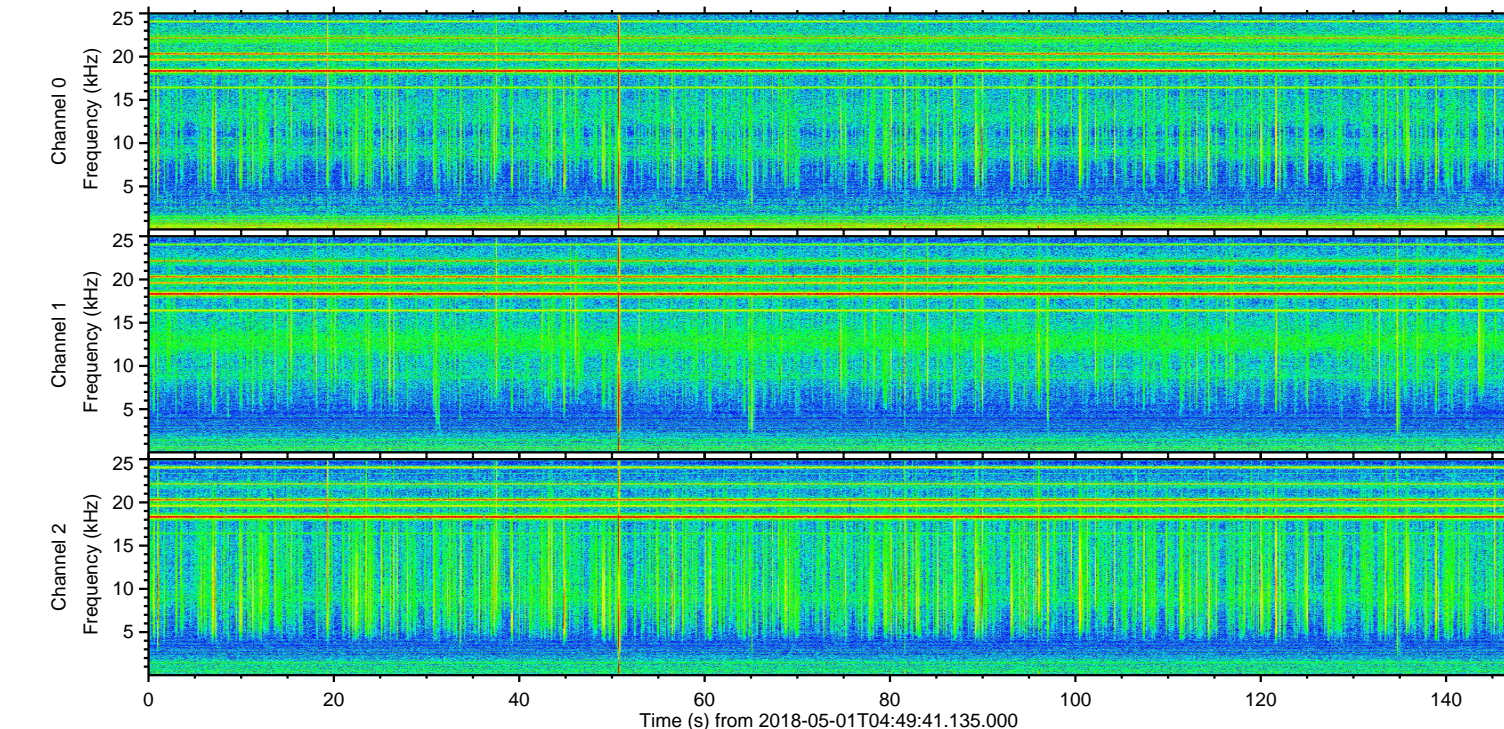
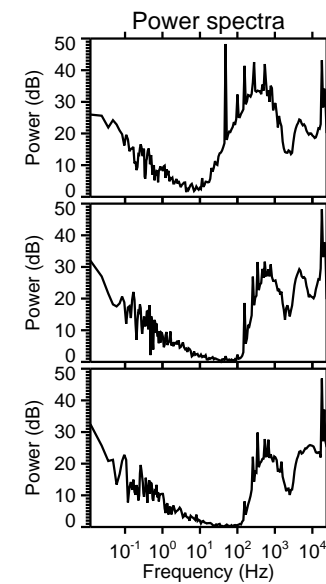
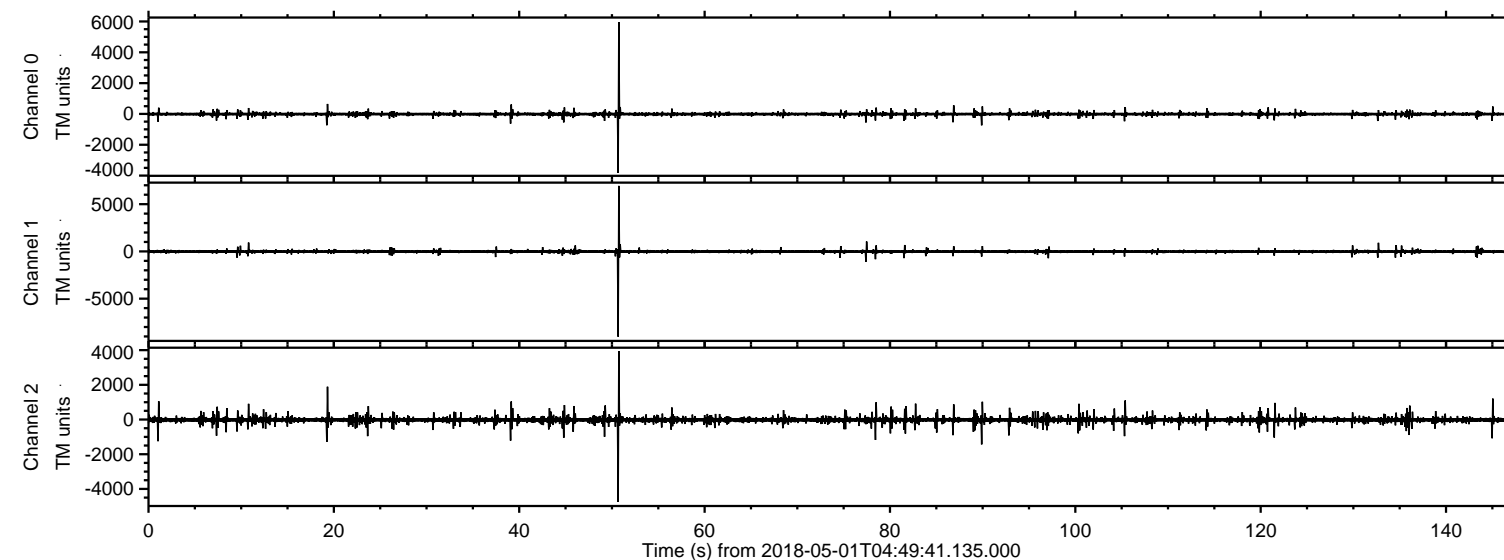


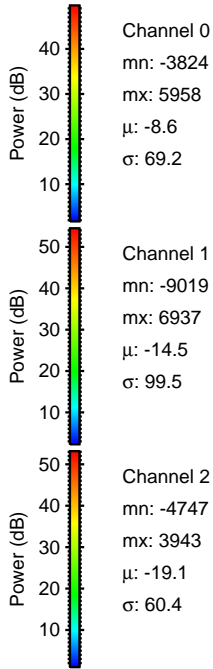
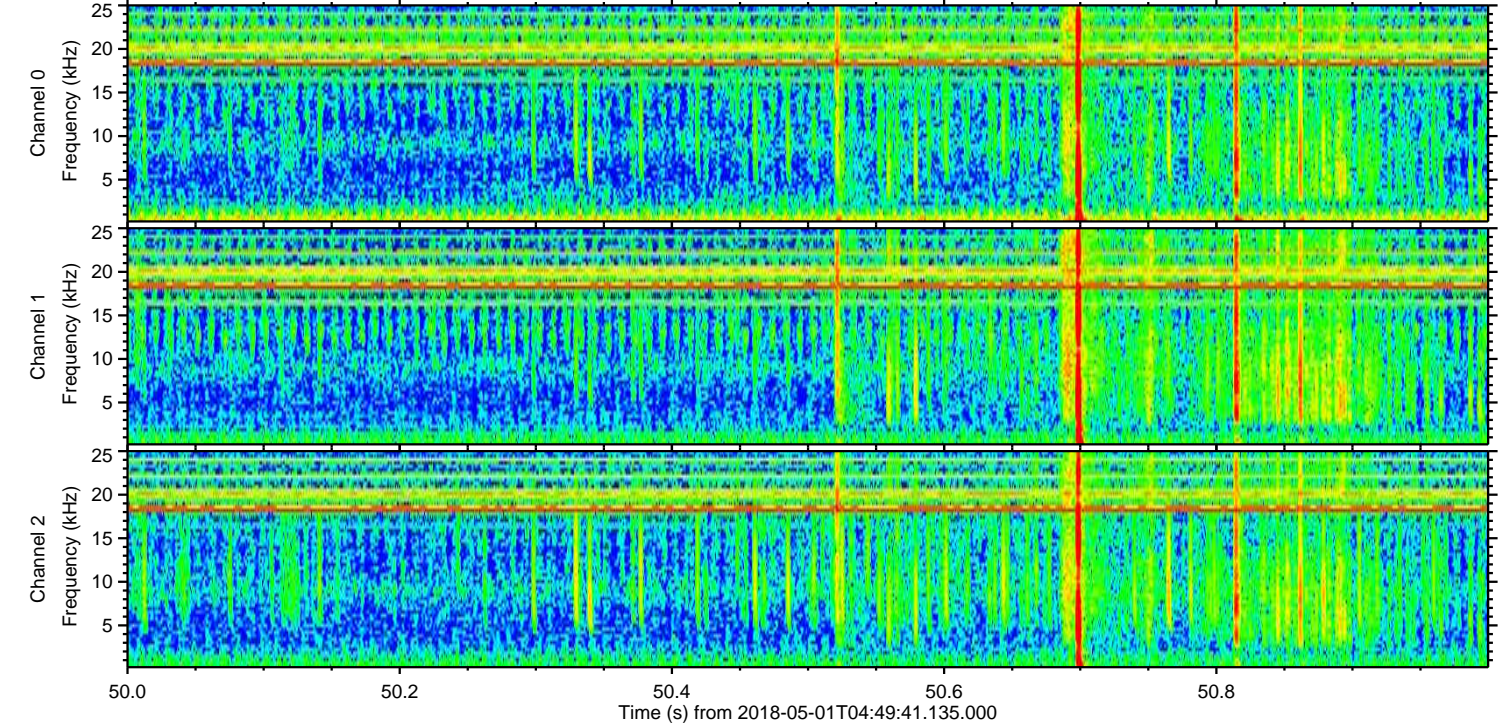
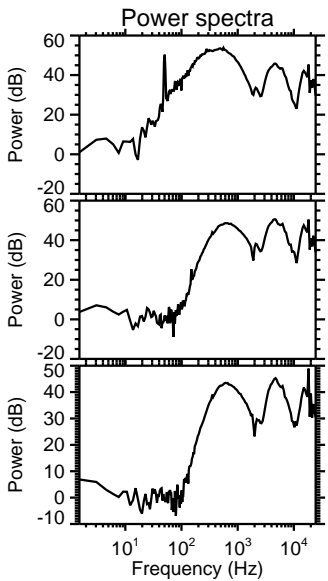
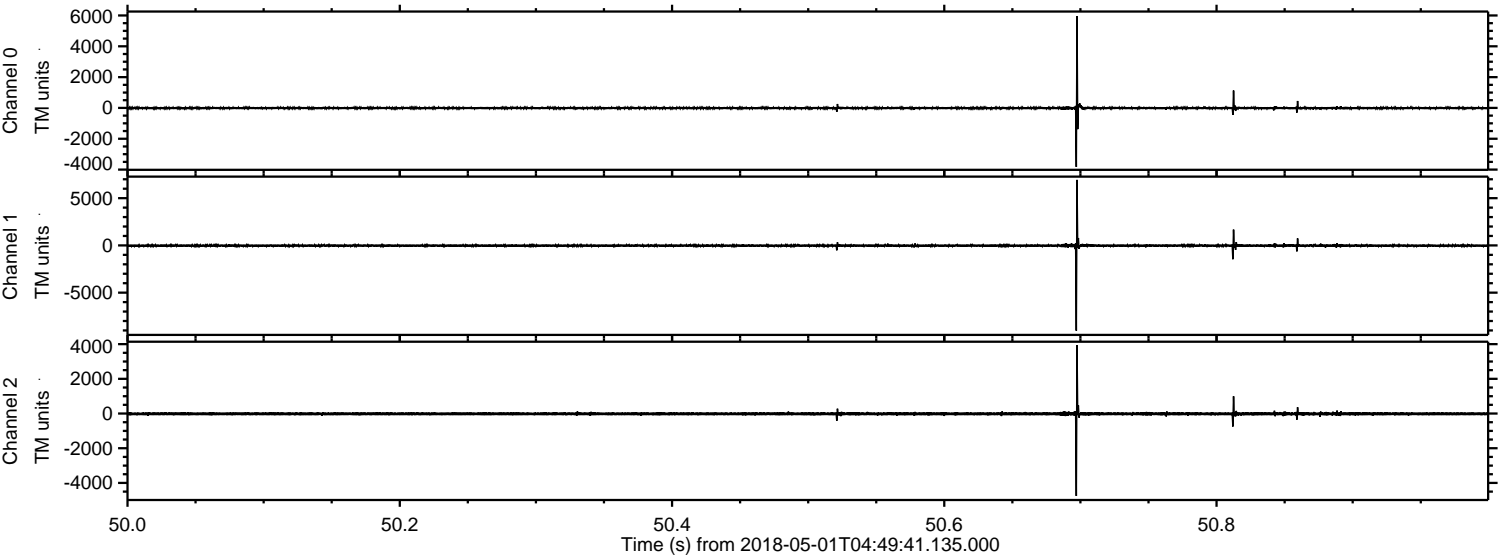
ELMAVAN 3D WAVEFORMS (Measured data sampled at 50 kHz) 51000 packets of 144 samples from 2018-05-01T04:49:41.135.000.

Processed Tue May 1 06:57:01 2018 by ELM ver.2012-10-06 from 001__elm20180501_044940__dat00.bin

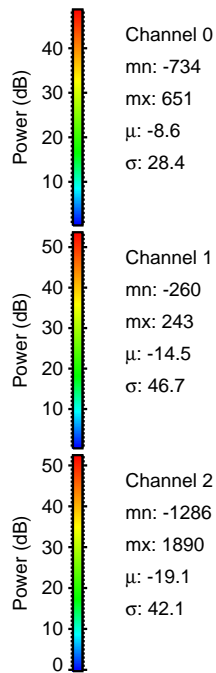
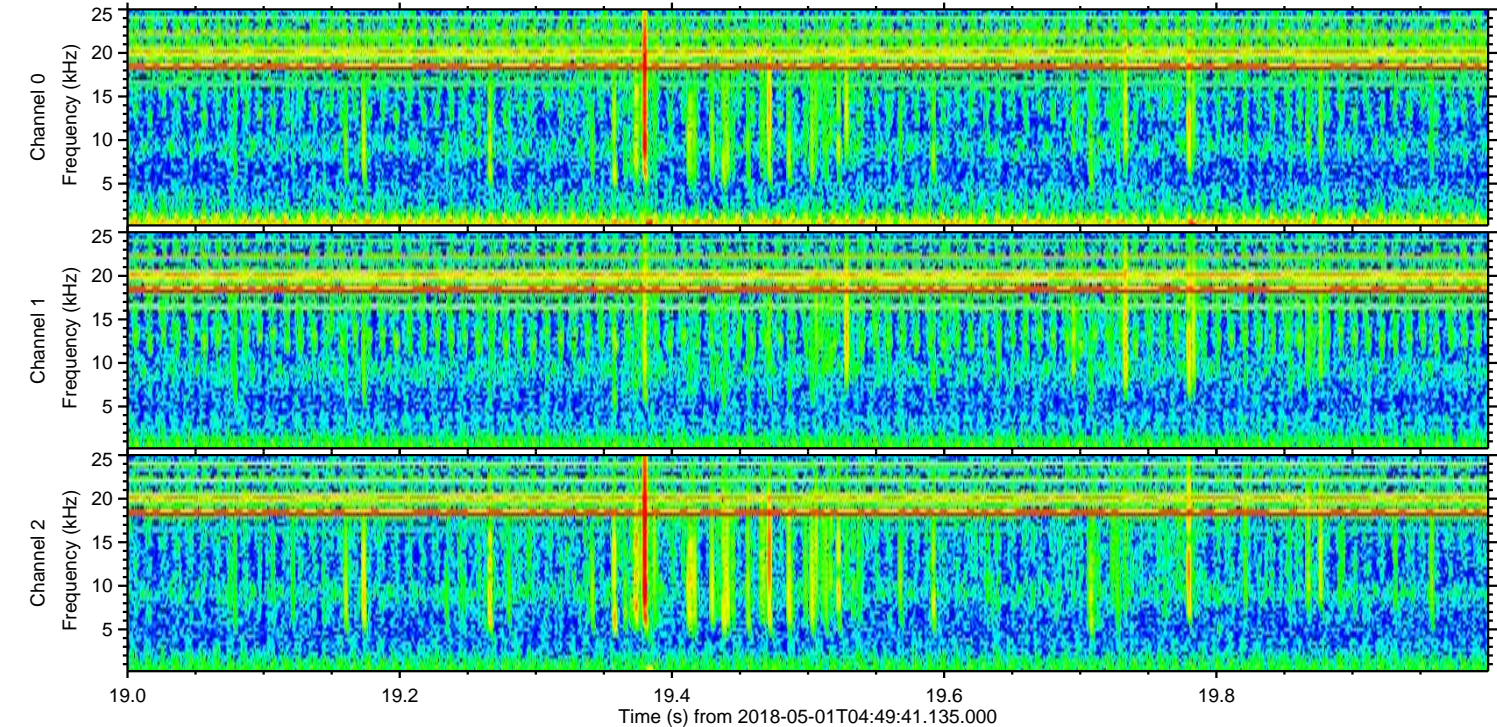
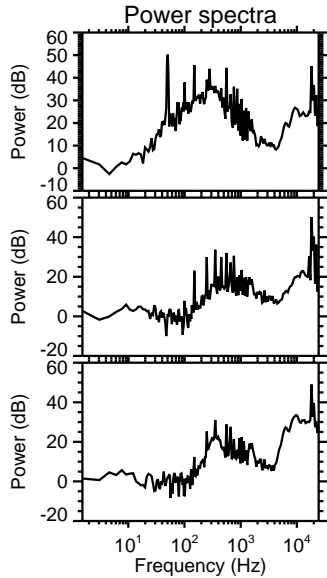
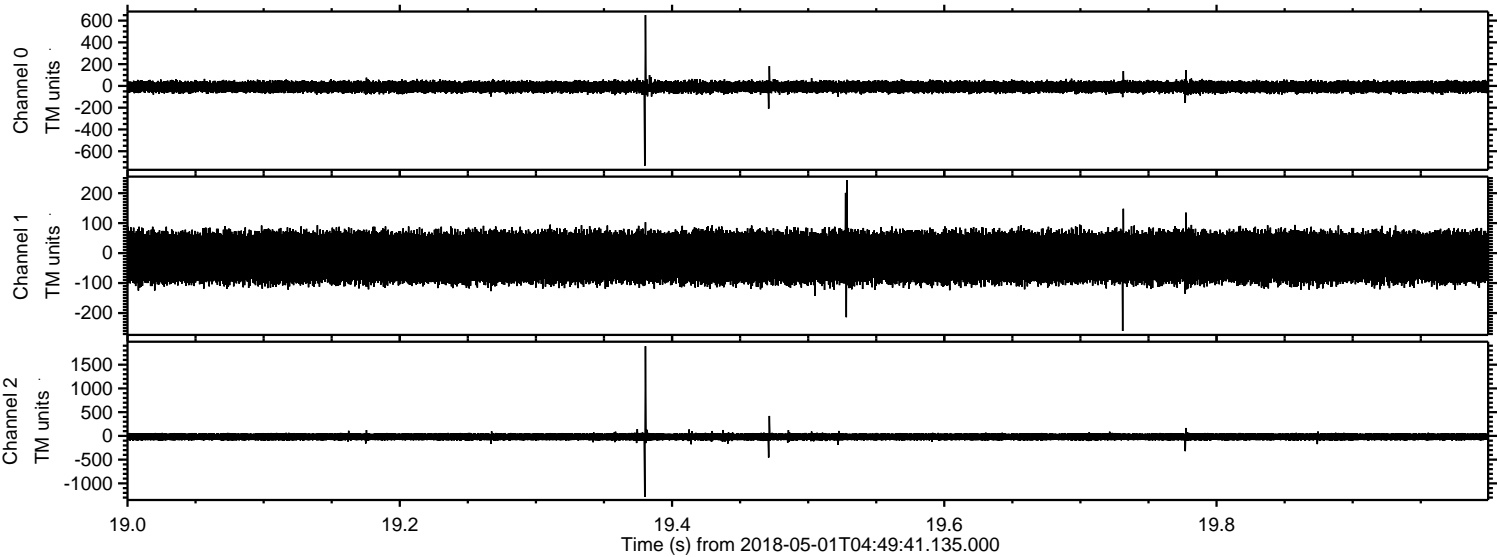


ELMAVAN 3D WAVEFORMS (Measured data sampled at 50 kHz) 51000 packets of 144 samples from 2018-05-01T04:49:41.135.000. Part 51/147

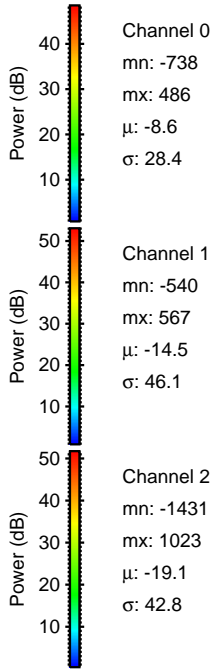
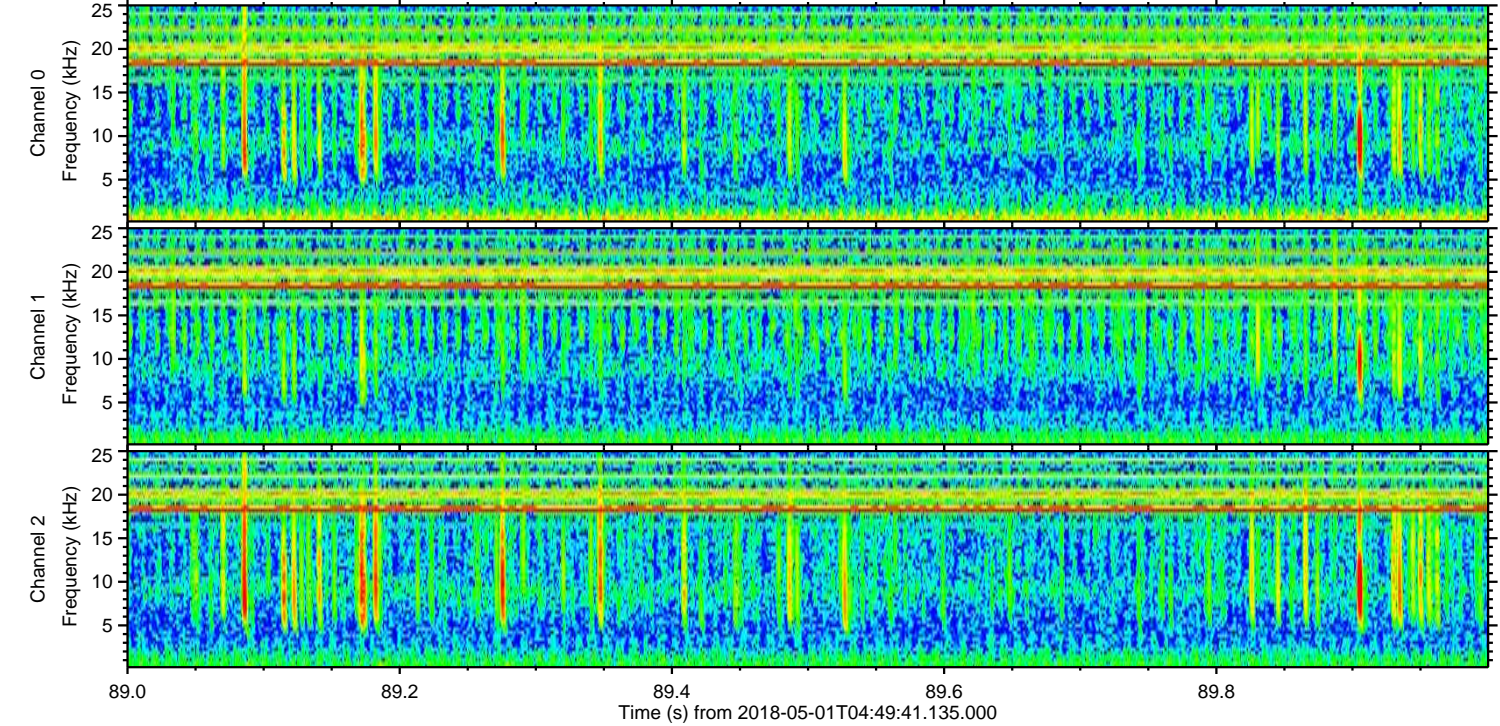
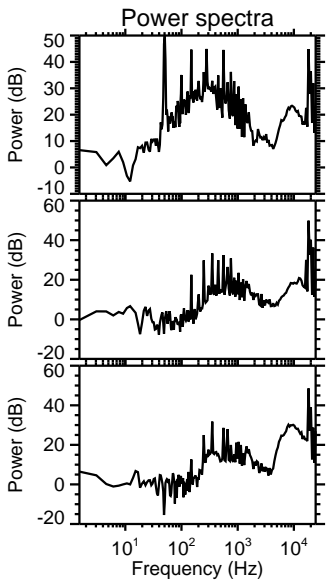
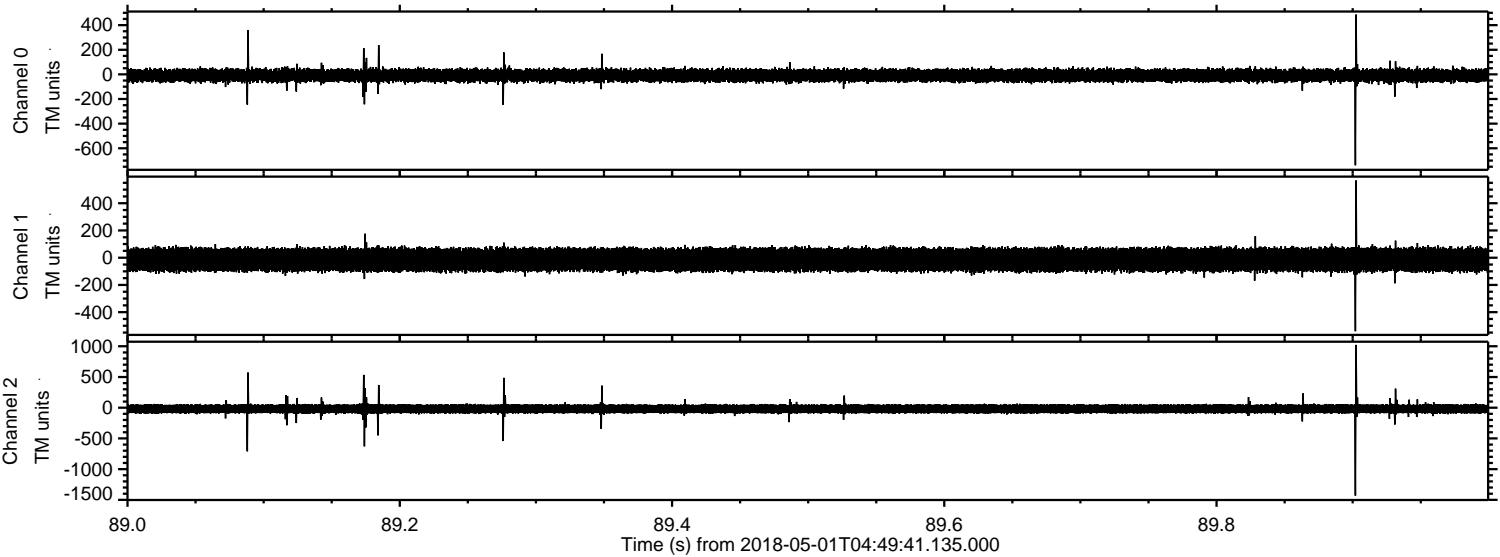
Processed Tue May 1 06:57:07 2018 by ELM ver.2012-10-06 from 001__elm20180501_044940__dat00.bin



Processed Tue May 1 06:57:08 2018 by ELM ver.2012-10-06 from 001__elm20180501_044940__dat00.bin

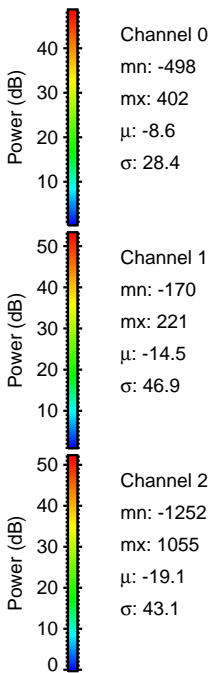
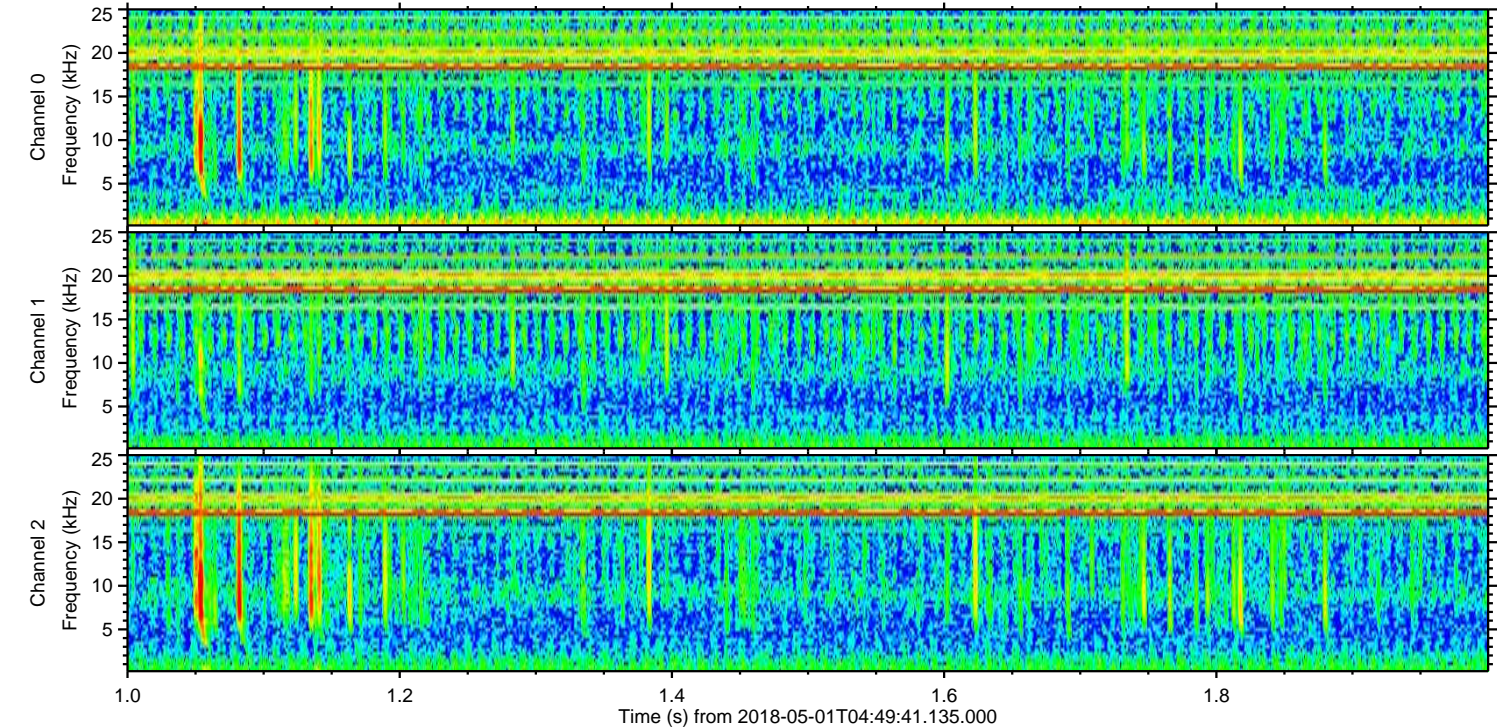
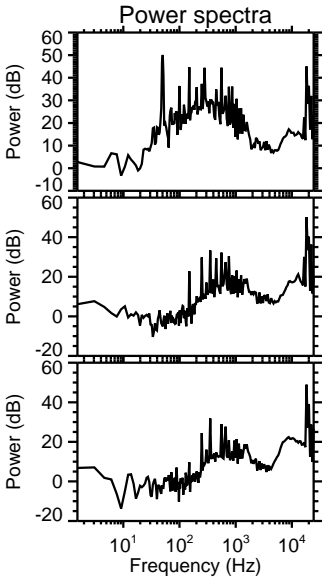
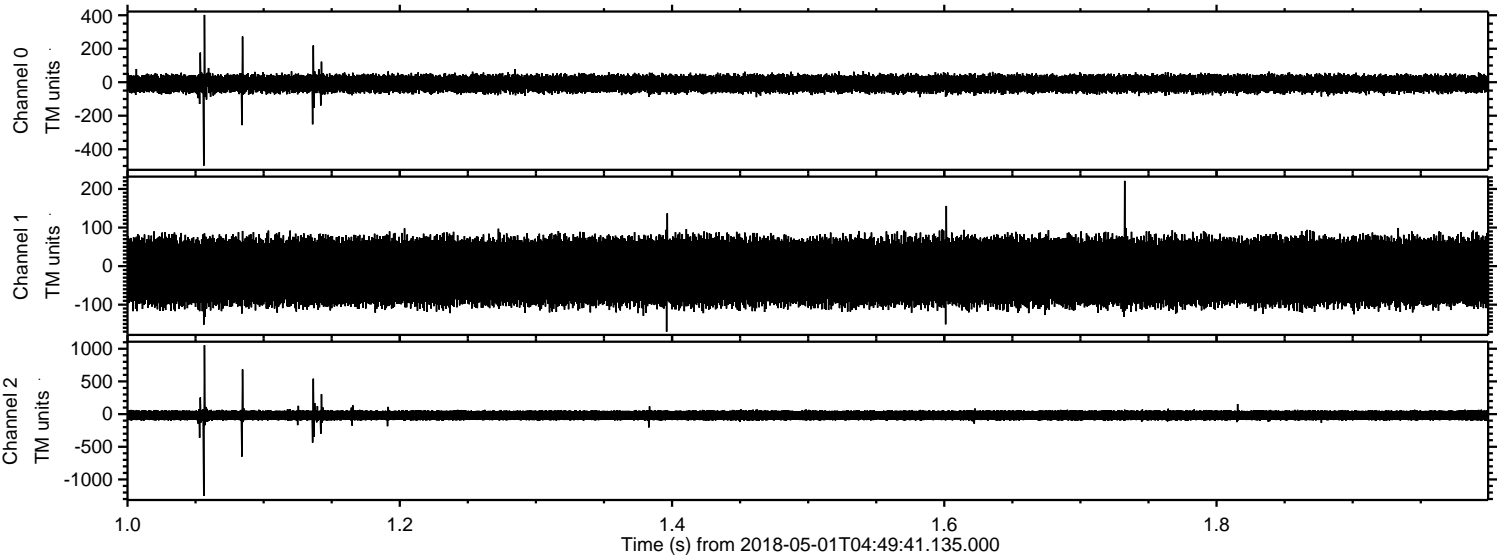


Processed Tue May 1 06:57:09 2018 by ELM ver.2012-10-06 from 001__elm20180501_044940__dat00.bin

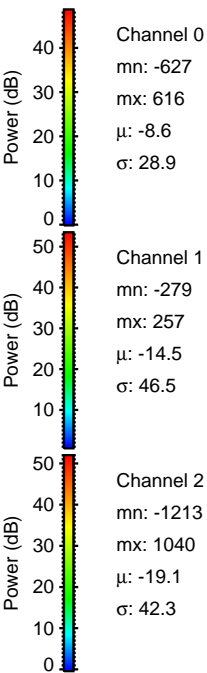
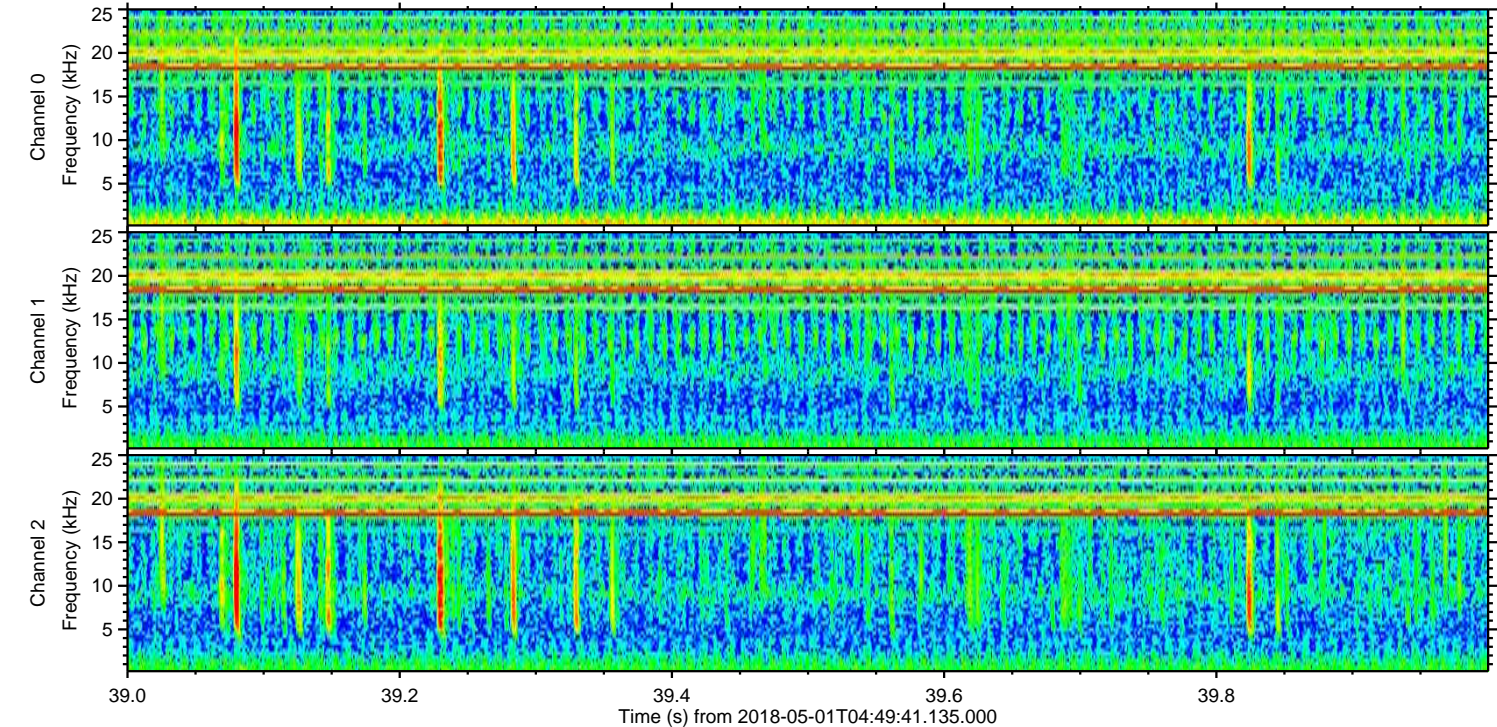
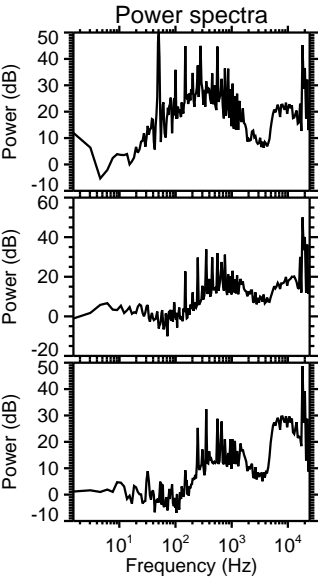
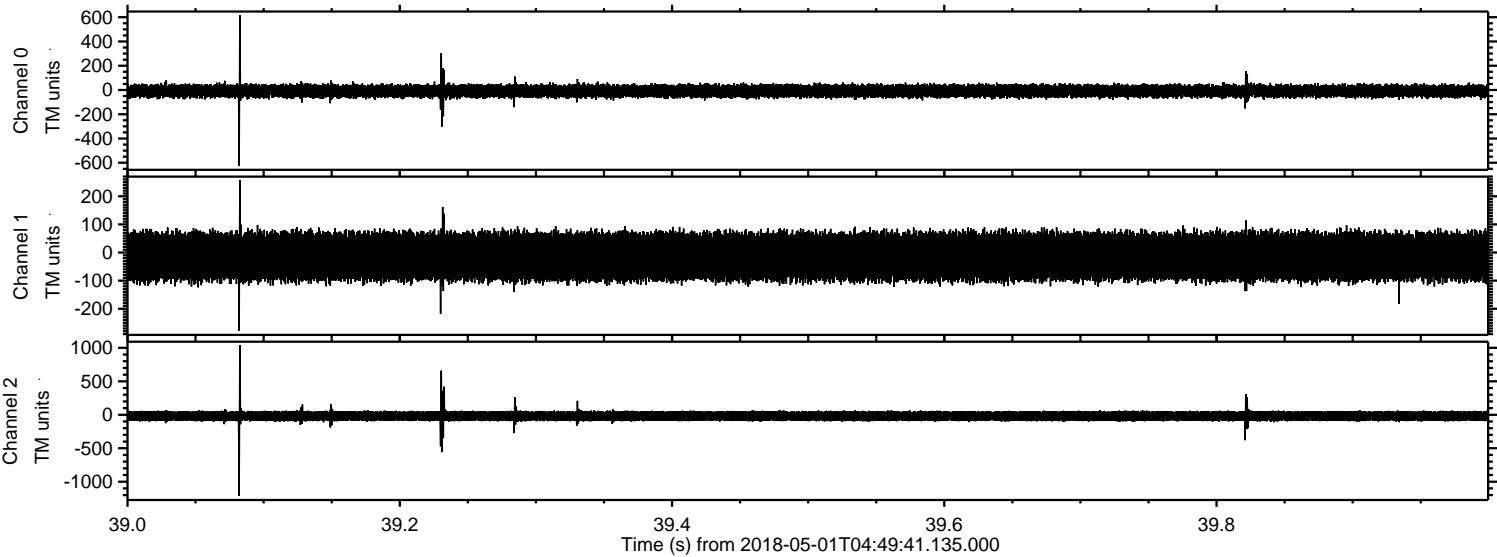


ELMAVAN 3D WAVEFORMS (Measured data sampled at 50 kHz) 51000 packets of 144 samples from 2018-05-01T04:49:41.135.000. Part 2/147

Processed Tue May 1 06:57:09 2018 by ELM ver.2012-10-06 from 001__elm20180501_044940__dat00.bin

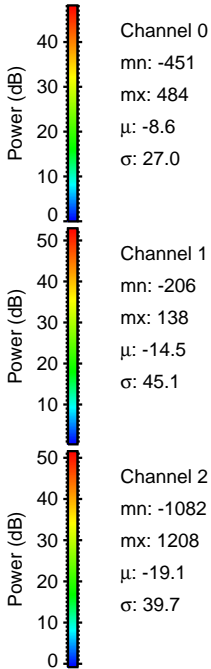
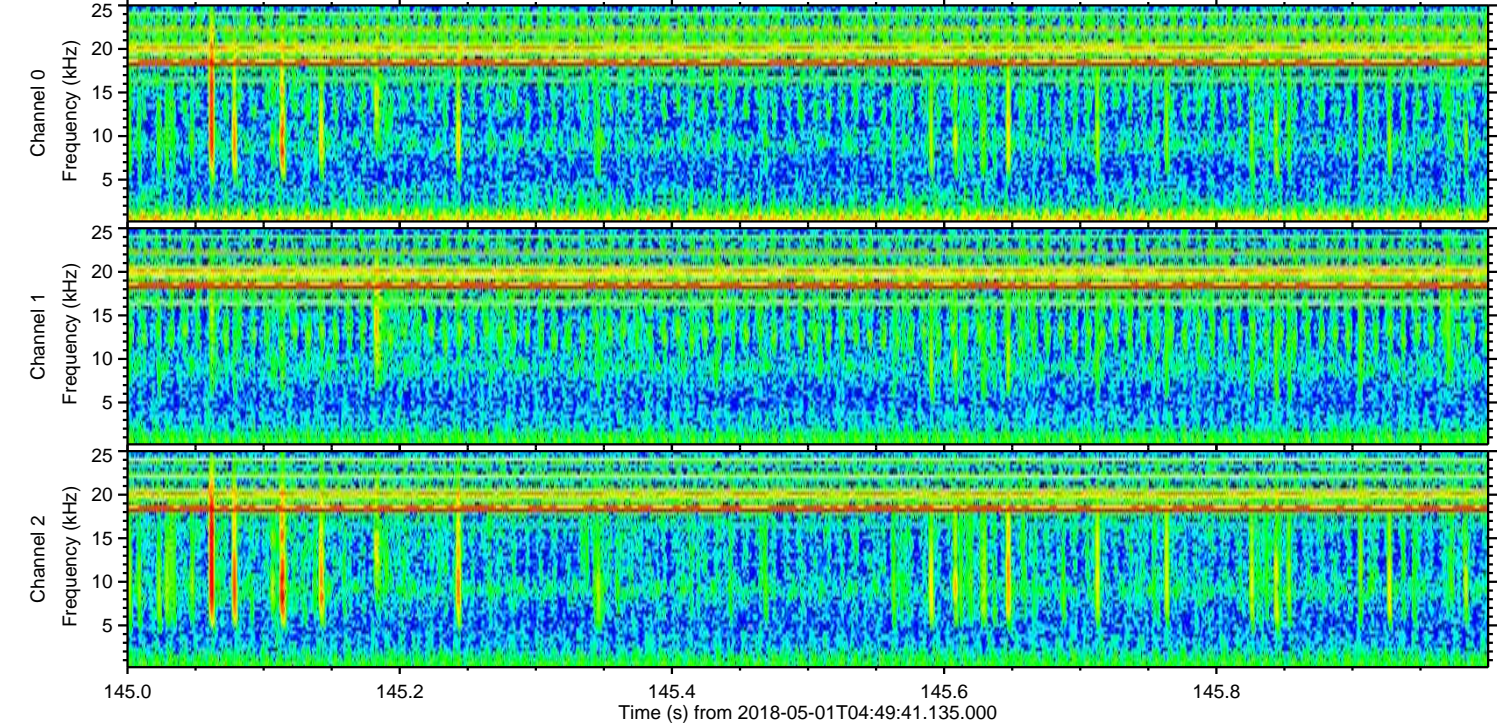
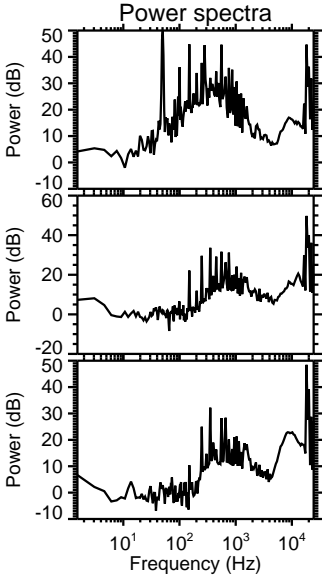
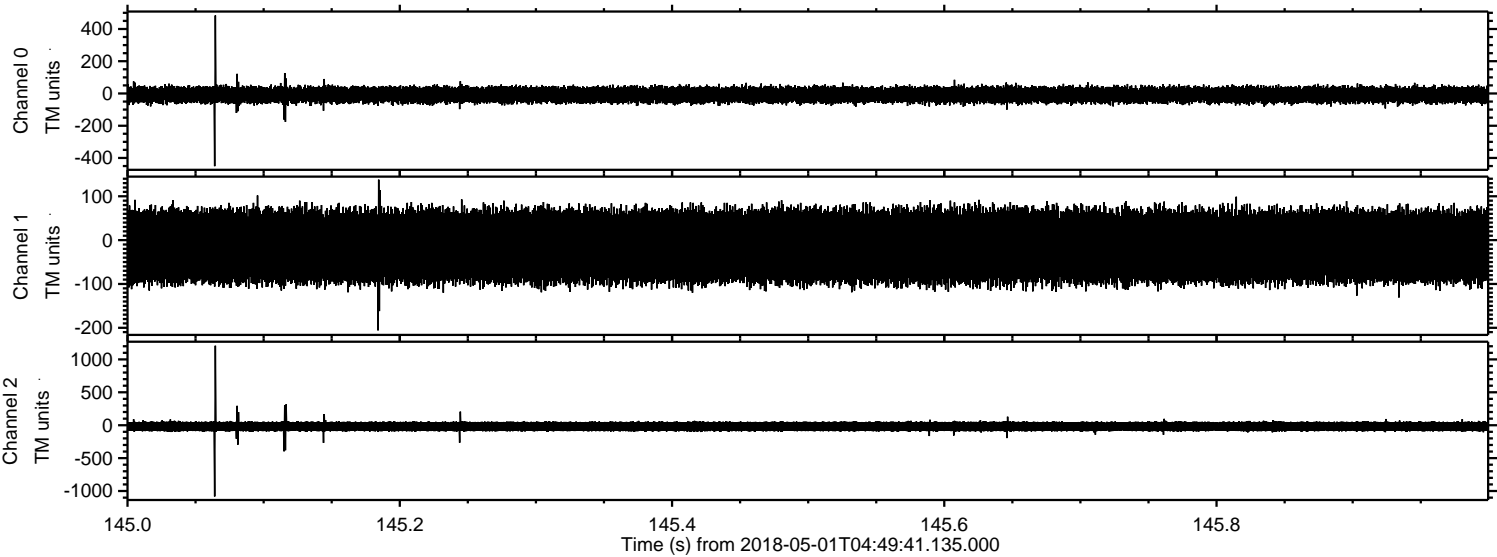


Processed Tue May 1 06:57:10 2018 by ELM ver.2012-10-06 from 001__elm20180501_044940__dat00.bin

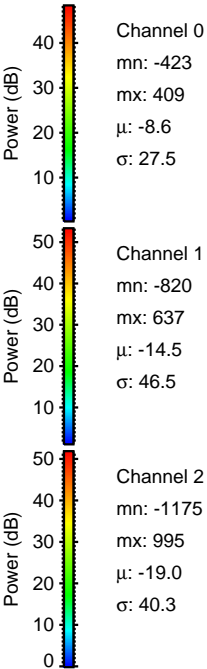
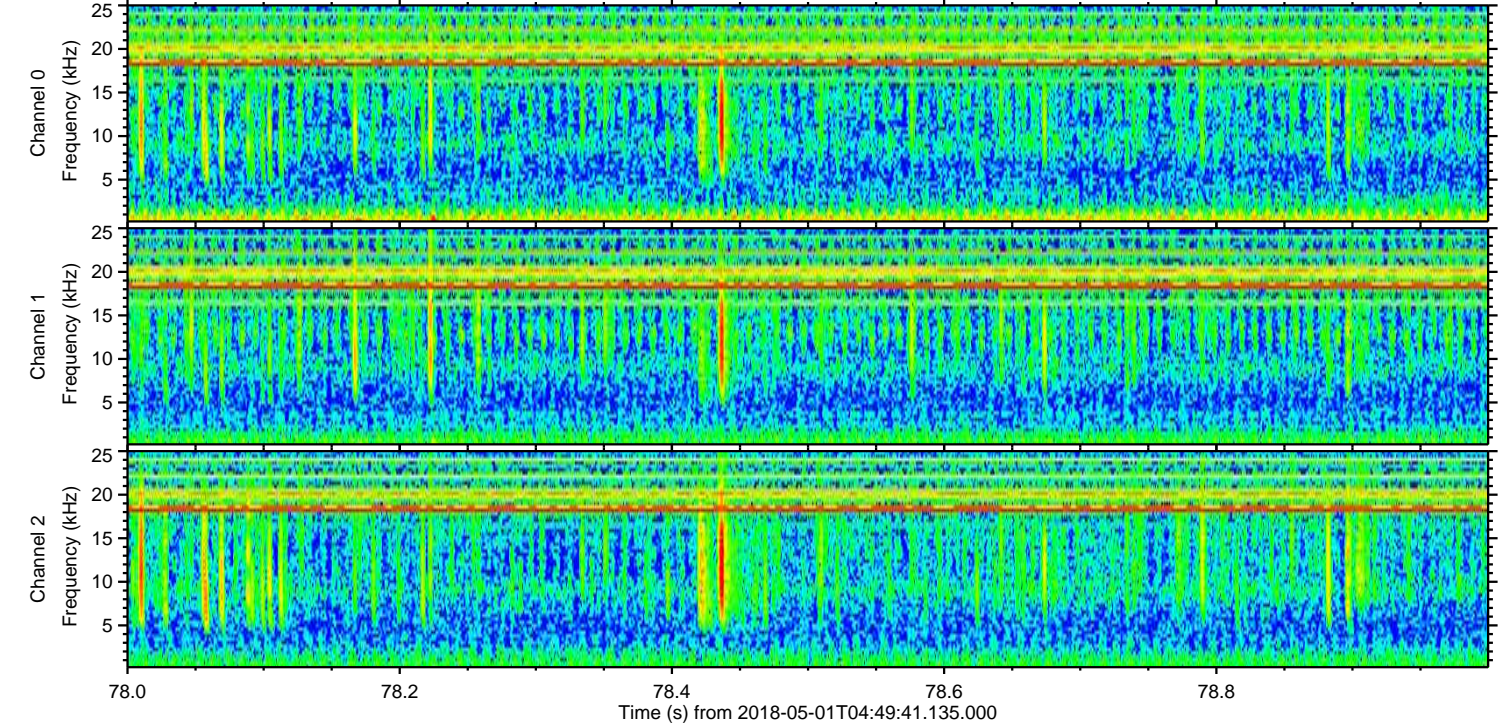
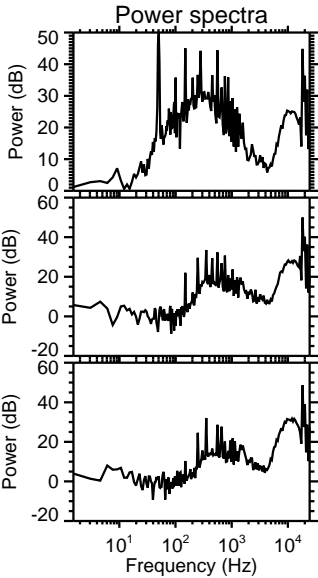
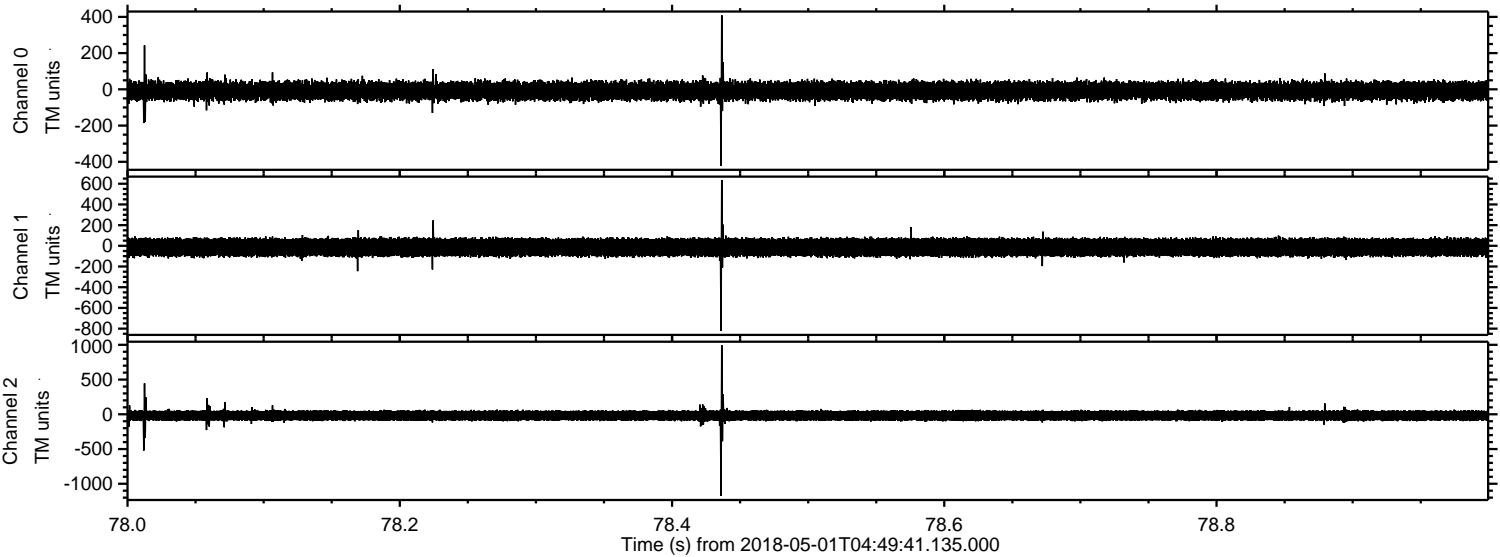


ELMAVAN 3D WAVEFORMS (Measured data sampled at 50 kHz) 51000 packets of 144 samples from 2018-05-01T04:49:41.135.000. Part 146/147

Processed Tue May 1 06:57:11 2018 by ELM ver.2012-10-06 from 001__elm20180501_044940__dat00.bin

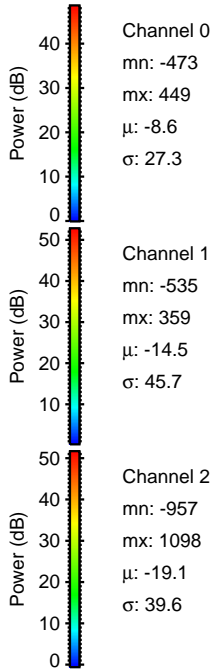
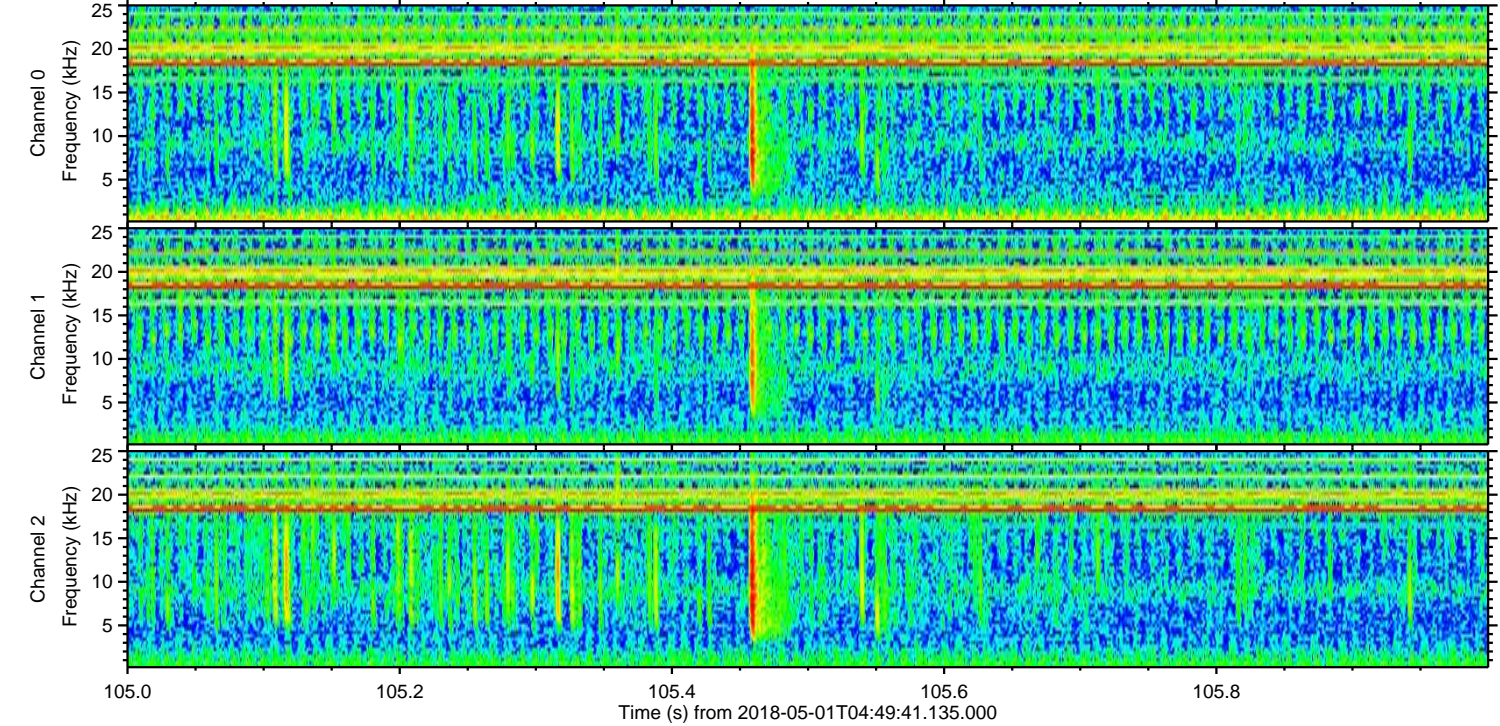
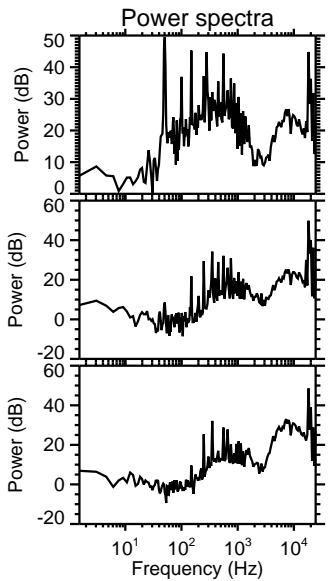
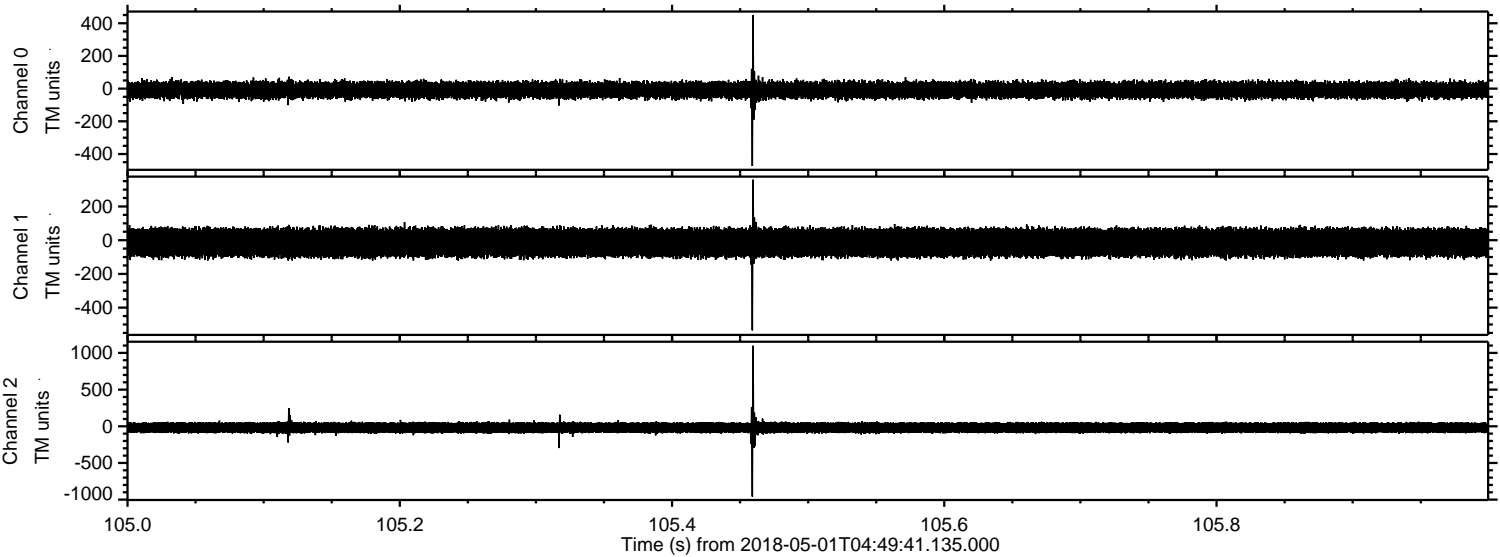


Processed Tue May 1 06:57:11 2018 by ELM ver.2012-10-06 from 001__elm20180501_044940__dat00.bin

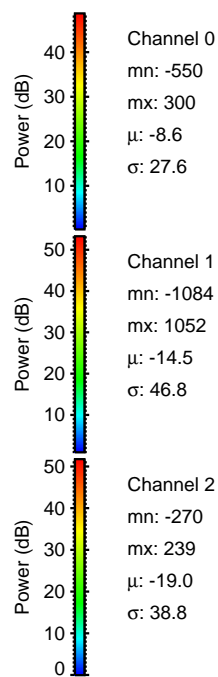
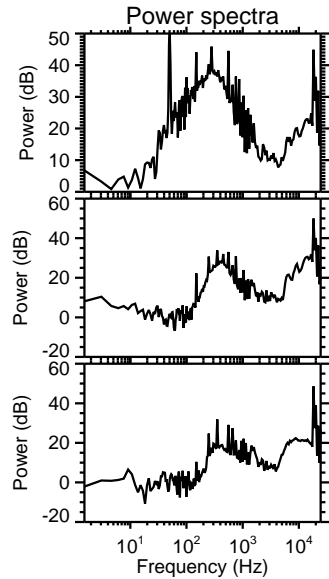
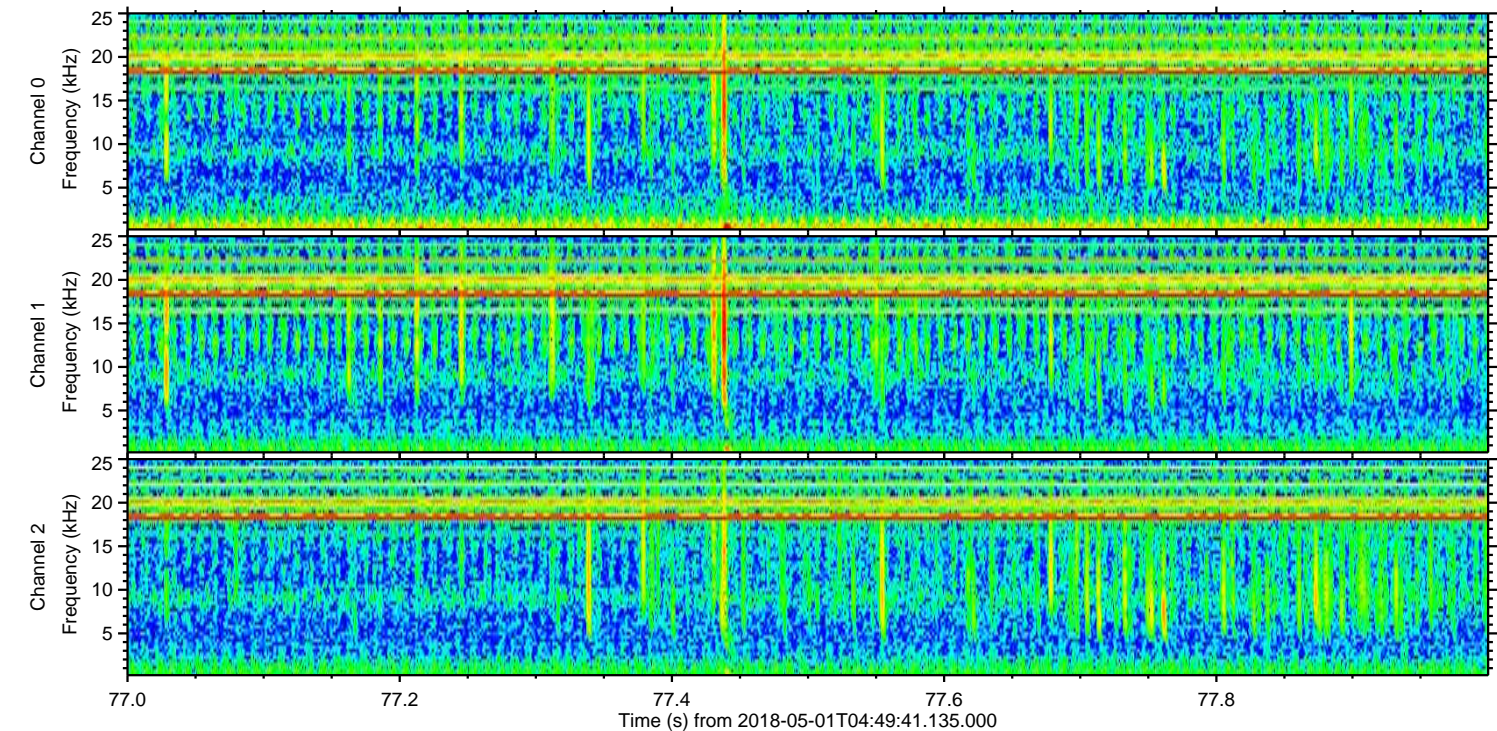
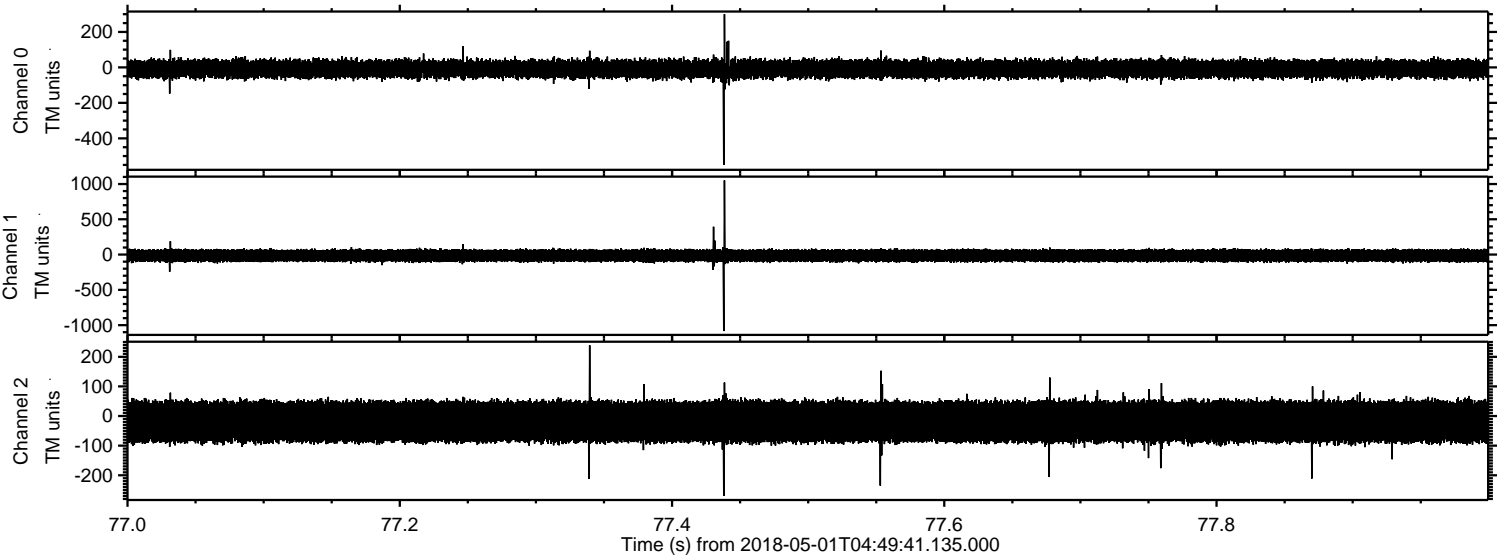


ELMAVAN 3D WAVEFORMS (Measured data sampled at 50 kHz) 51000 packets of 144 samples from 2018-05-01T04:49:41.135.000. Part 106/147

Processed Tue May 1 06:57:12 2018 by ELM ver.2012-10-06 from 001__elm20180501_044940__dat00.bin



Processed Tue May 1 06:57:12 2018 by ELM ver.2012-10-06 from 001__elm20180501_044940__dat00.bin



Channel 0
mn: -550
mx: 300
 μ : -8.6
 σ : 27.6

Channel 1
mn: -1084
mx: 1052
 μ : -14.5
 σ : 46.8

Channel 2
mn: -270
mx: 239
 μ : -19.0
 σ : 38.8

Processed Tue May 1 06:57:13 2018 by ELM ver.2012-10-06 from 001__elm20180501_044940__dat00.bin

