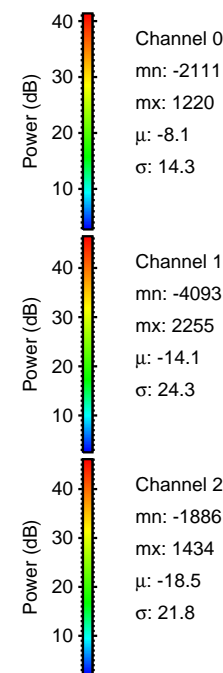
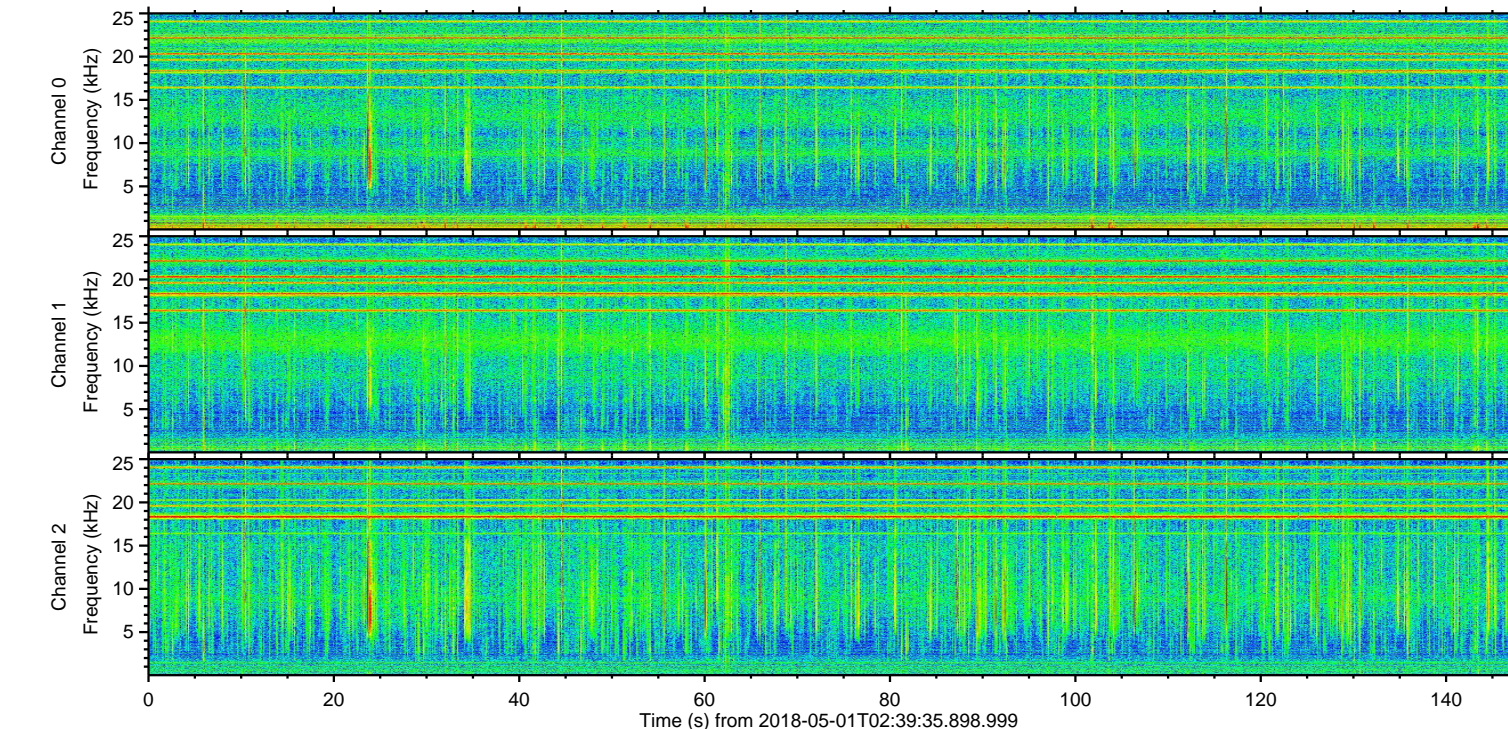
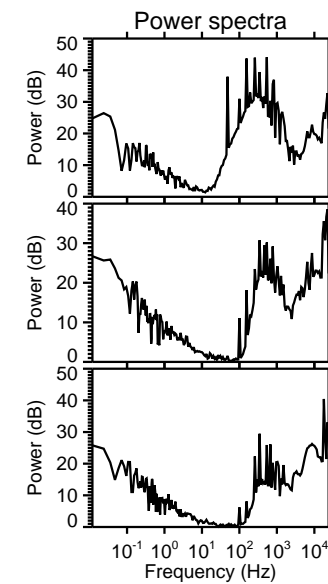
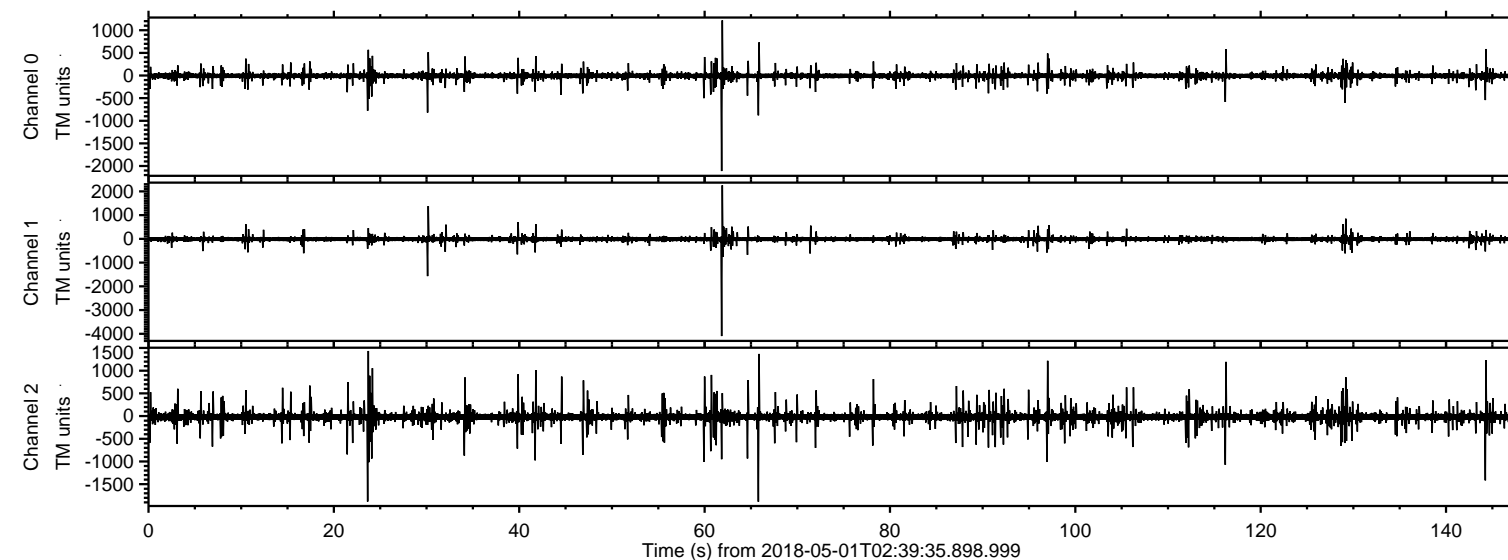


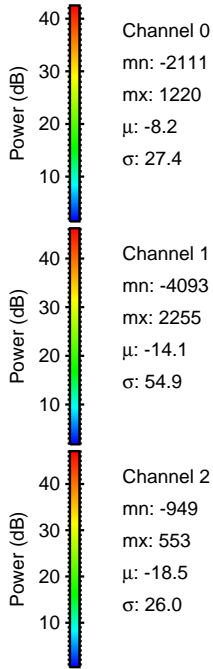
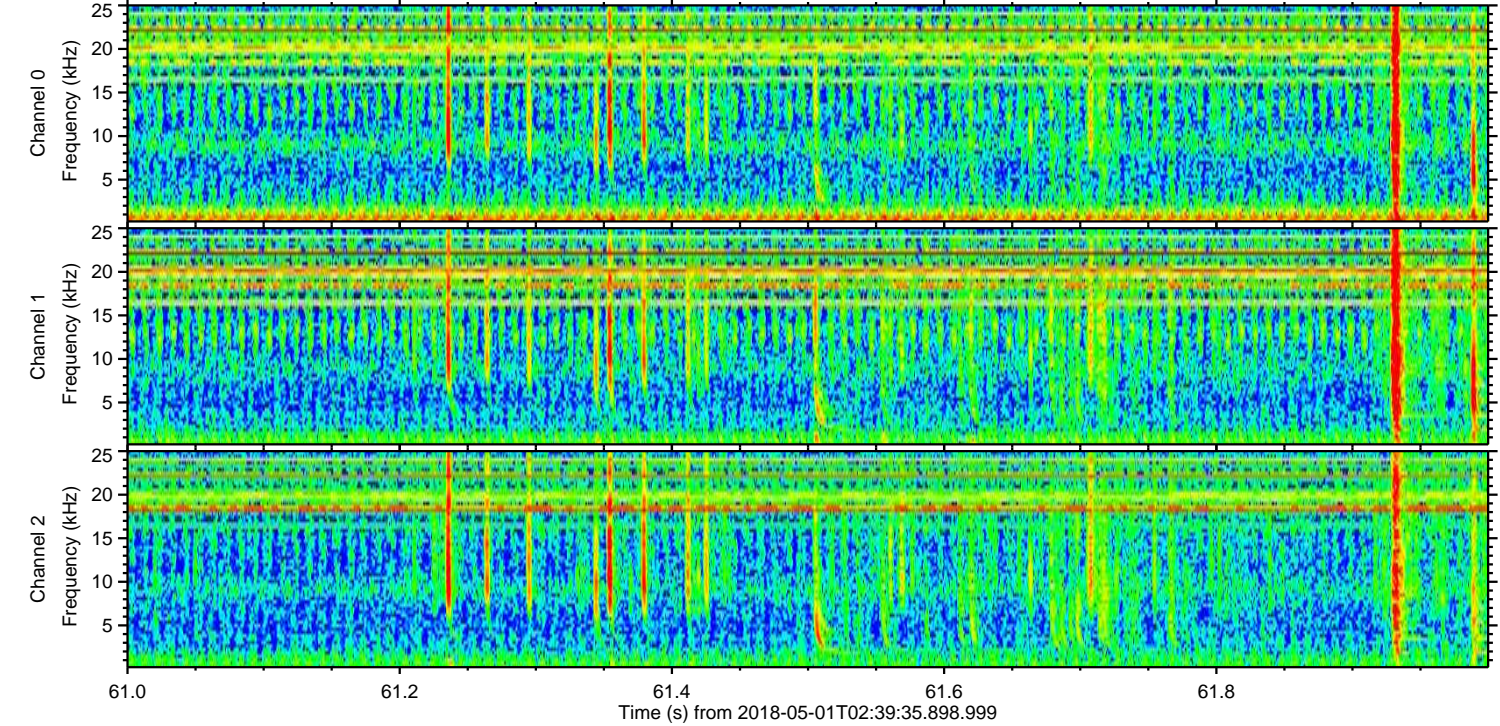
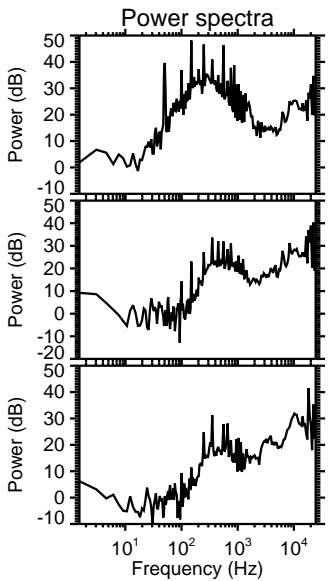
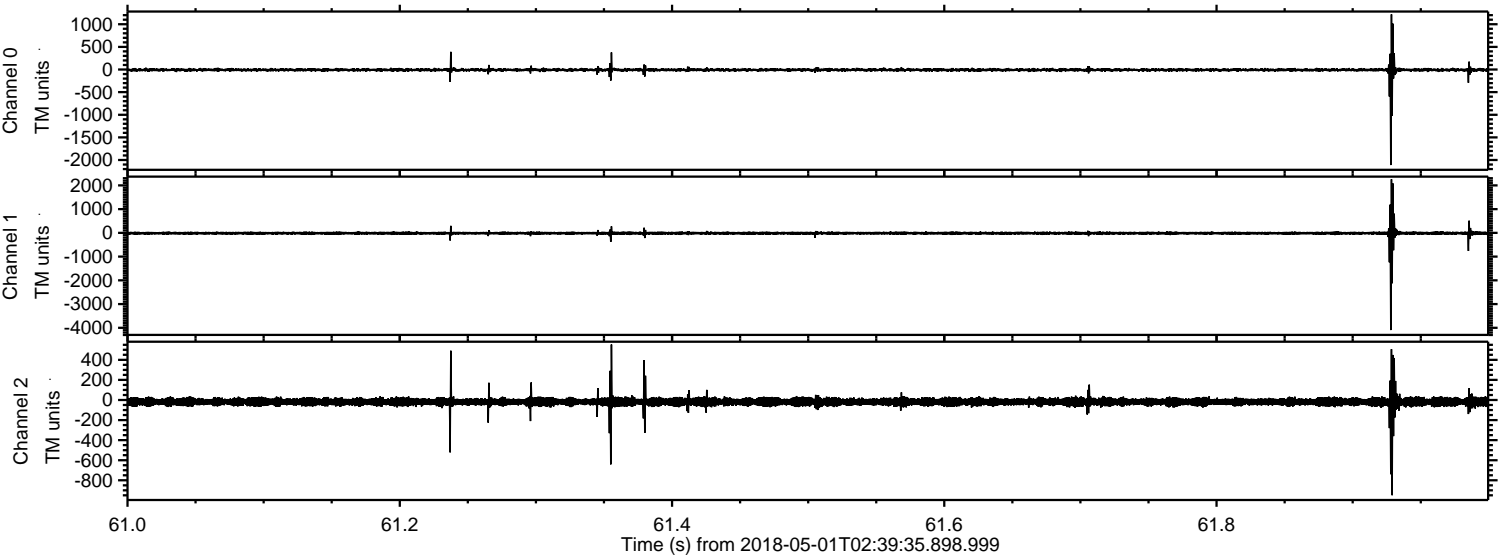
# ELMAVAN 3D WAVEFORMS (Measured data sampled at 50 kHz) 51000 packets of 144 samples from 2018-05-01T02:39:35.898.999.

Processed Tue May 1 04:47:17 2018 by ELM ver.2012-10-06 from 001\_\_elm20180501\_023934\_\_dat00.bin



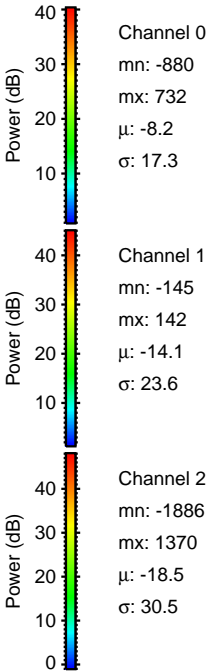
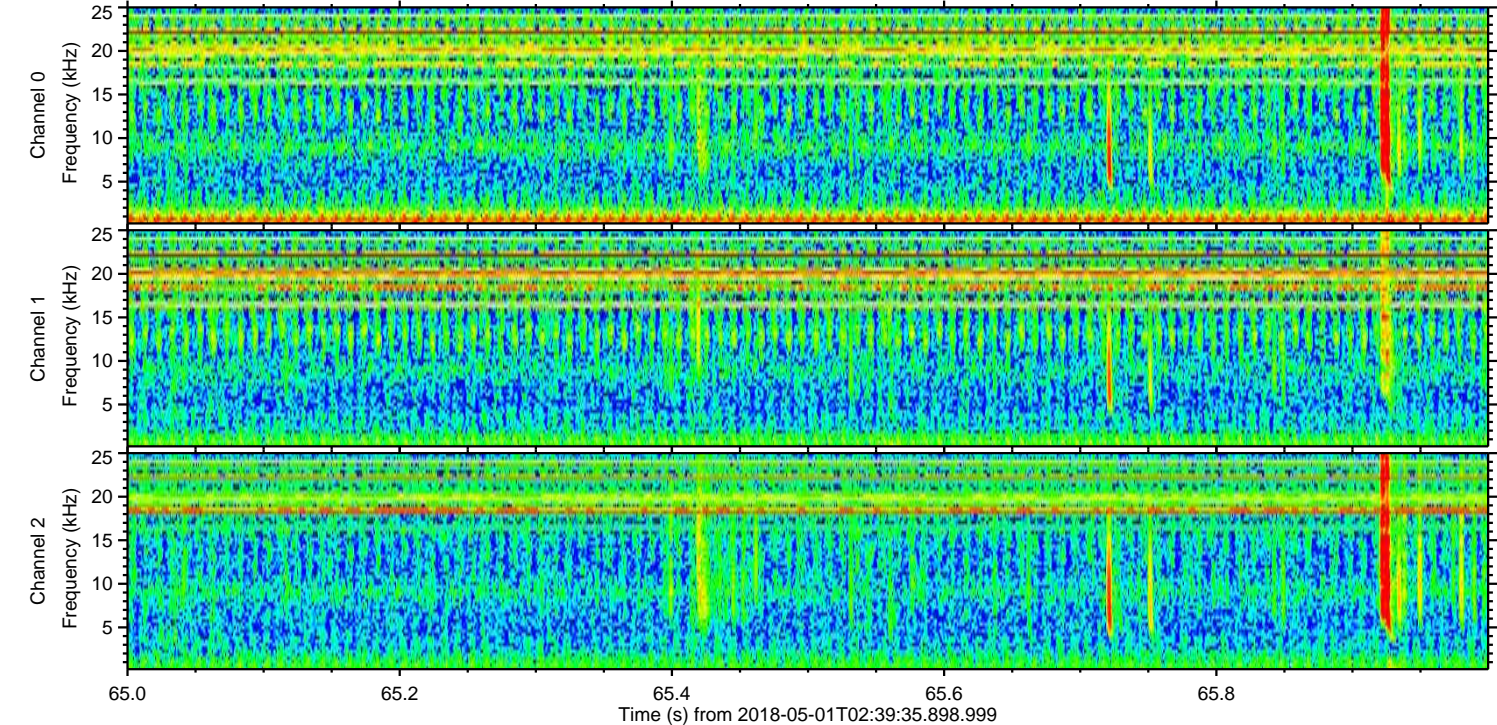
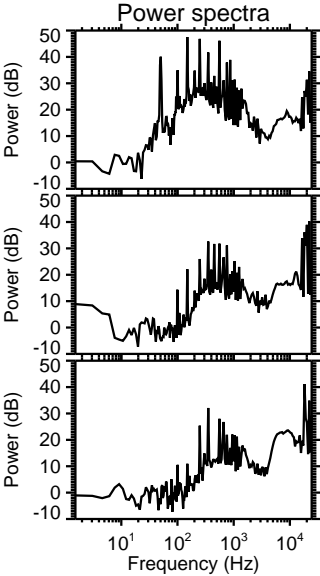
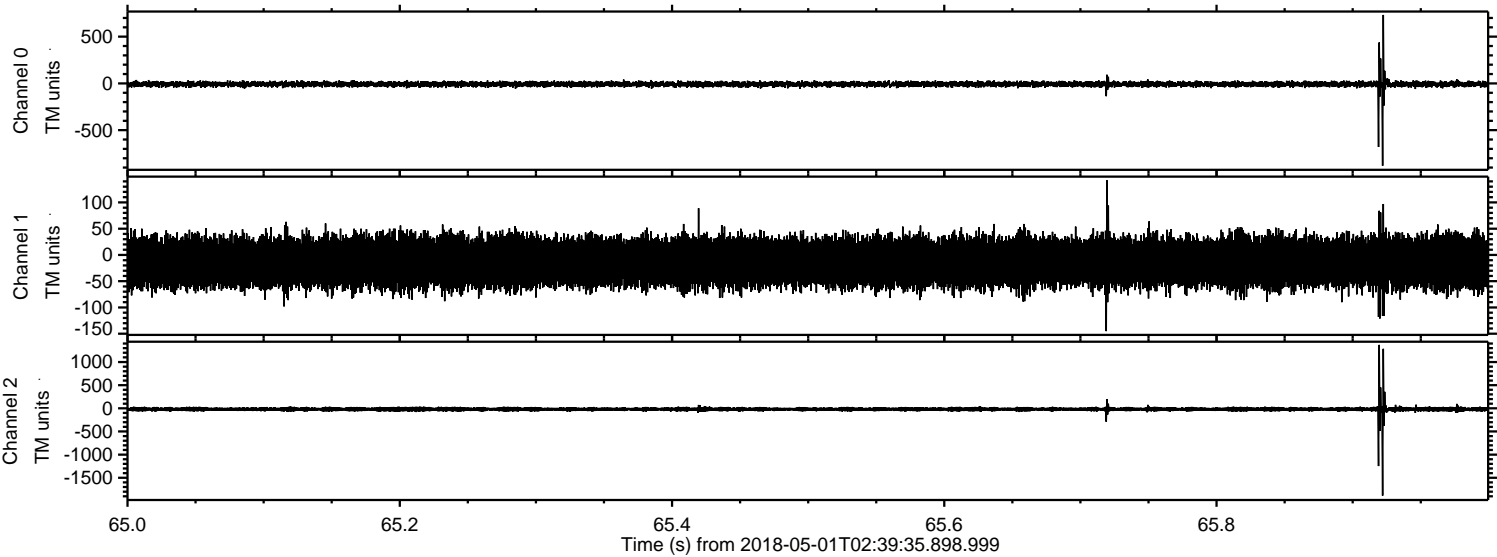


Processed Tue May 1 04:47:23 2018 by ELM ver.2012-10-06 from 001\_\_elm20180501\_023934\_\_dat00.bin



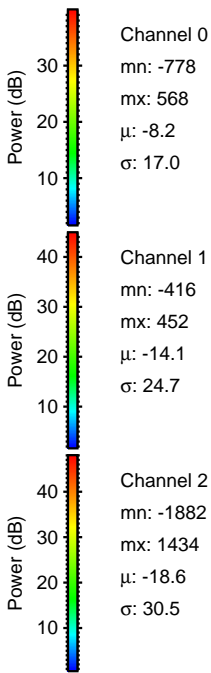
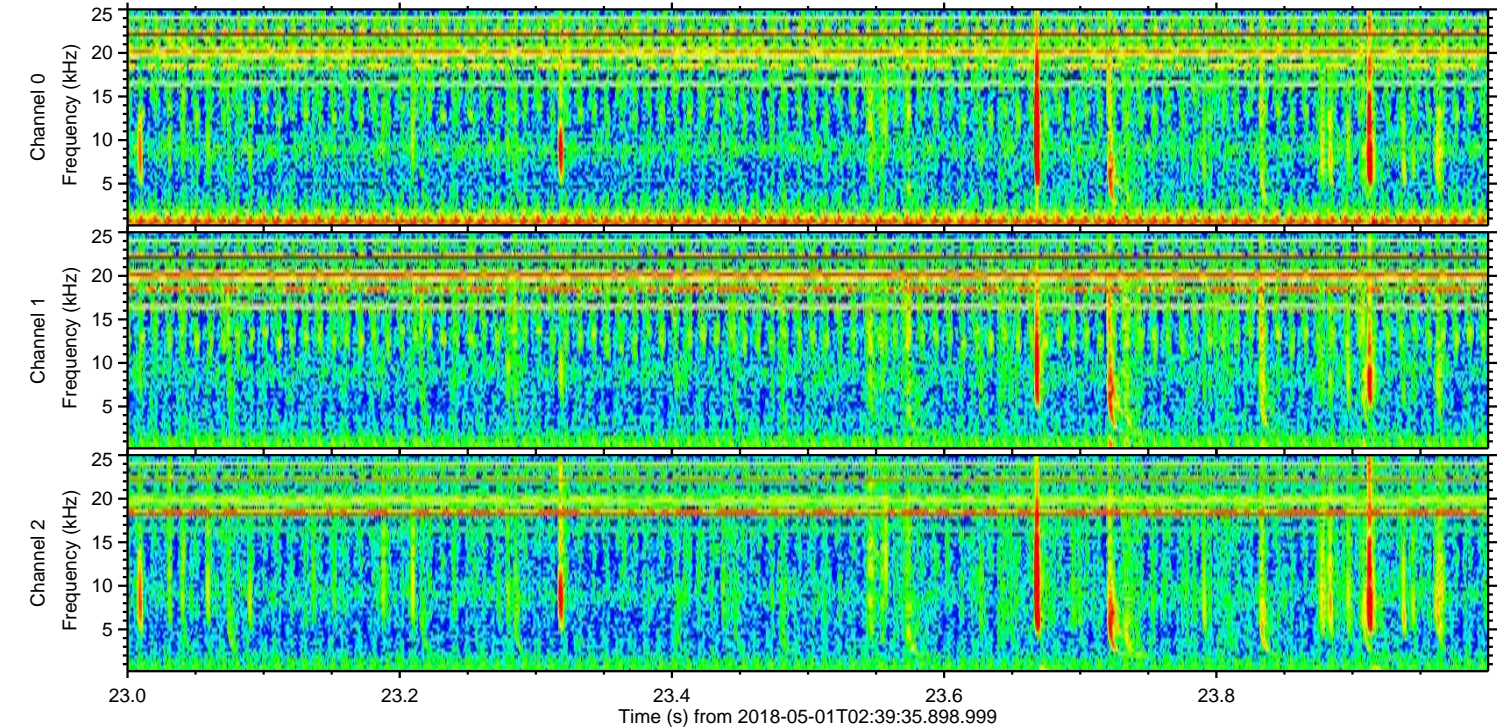
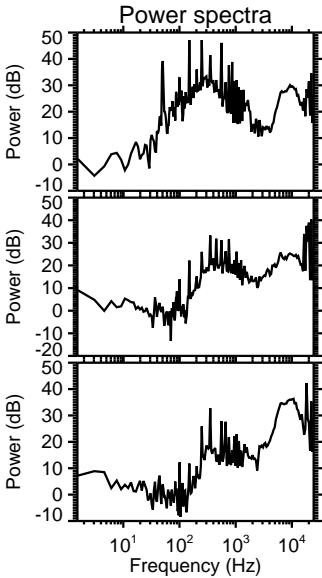
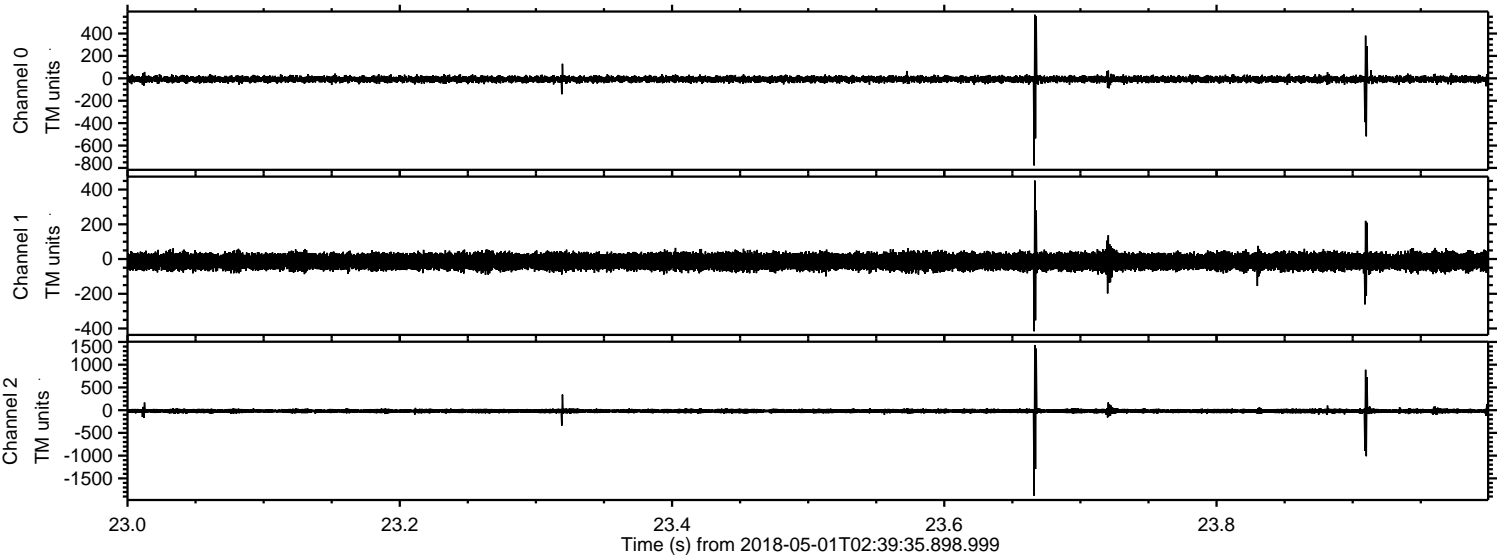


Processed Tue May 1 04:47:24 2018 by ELM ver.2012-10-06 from 001\_\_elm20180501\_023934\_\_dat00.bin





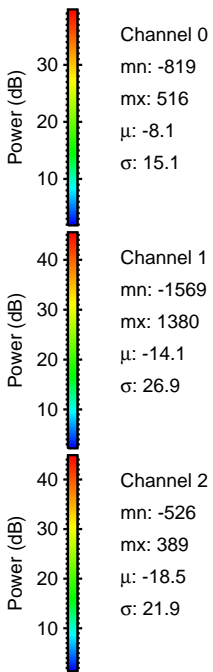
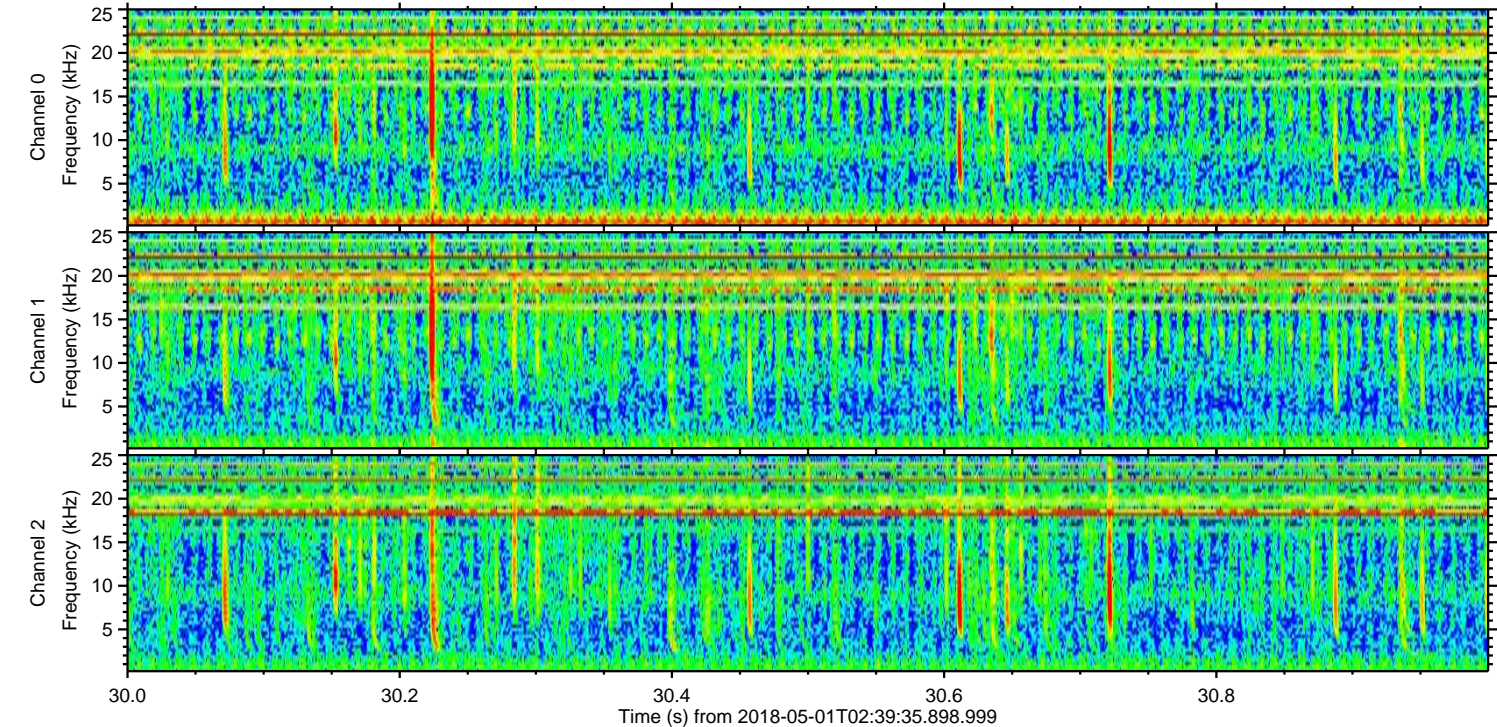
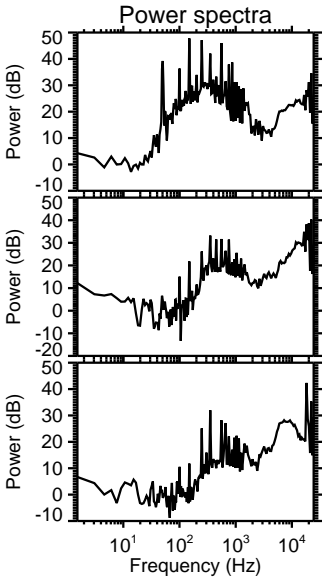
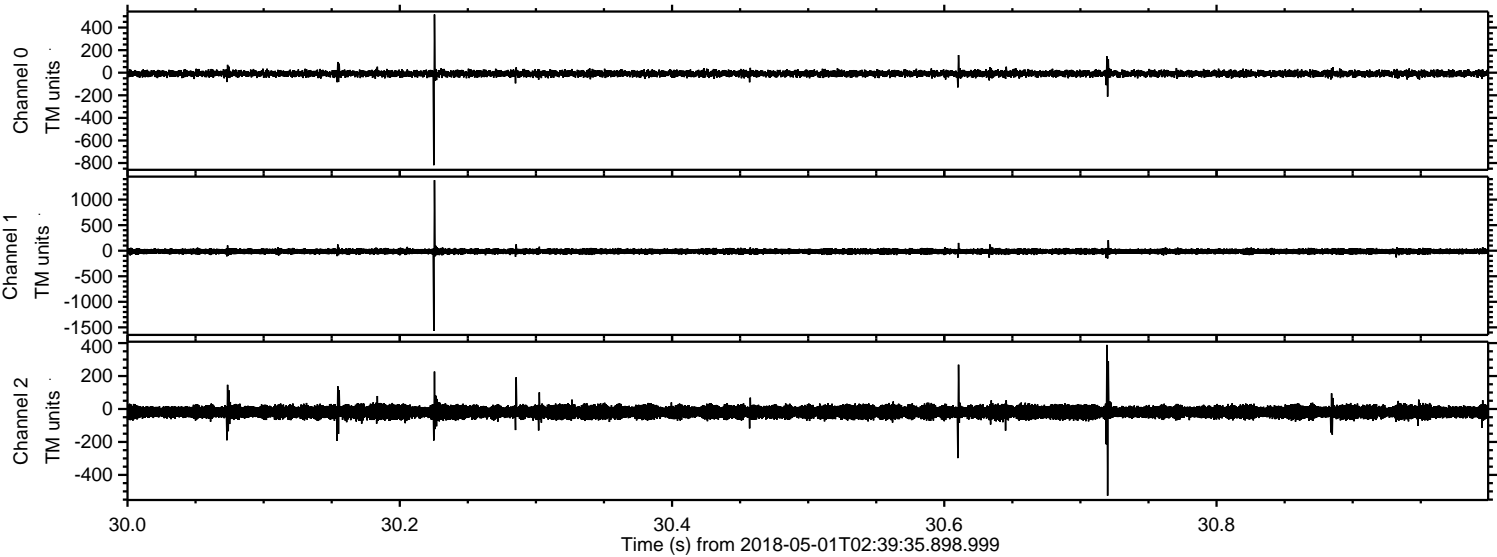
Processed Tue May 1 04:47:25 2018 by ELM ver.2012-10-06 from 001\_\_elm20180501\_023934\_\_dat00.bin





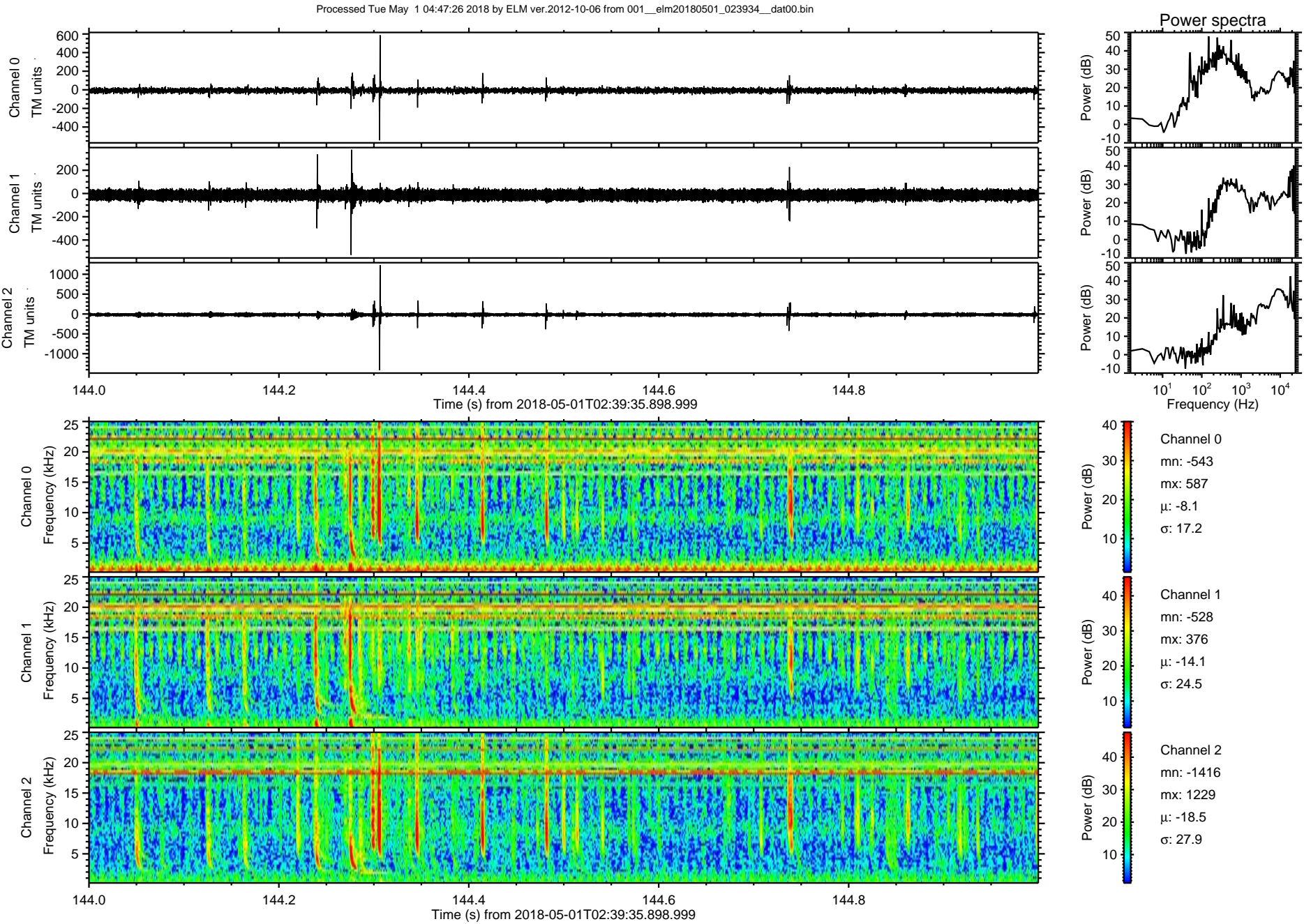
ELMAVAN 3D WAVEFORMS (Measured data sampled at 50 kHz) 51000 packets of 144 samples from 2018-05-01T02:39:35.898.999. Part 31/147

Processed Tue May 1 04:47:25 2018 by ELM ver.2012-10-06 from 001\_\_elm20180501\_023934\_\_dat00.bin



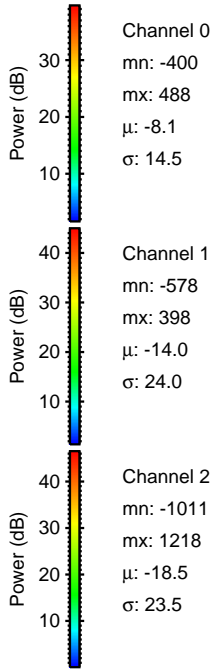
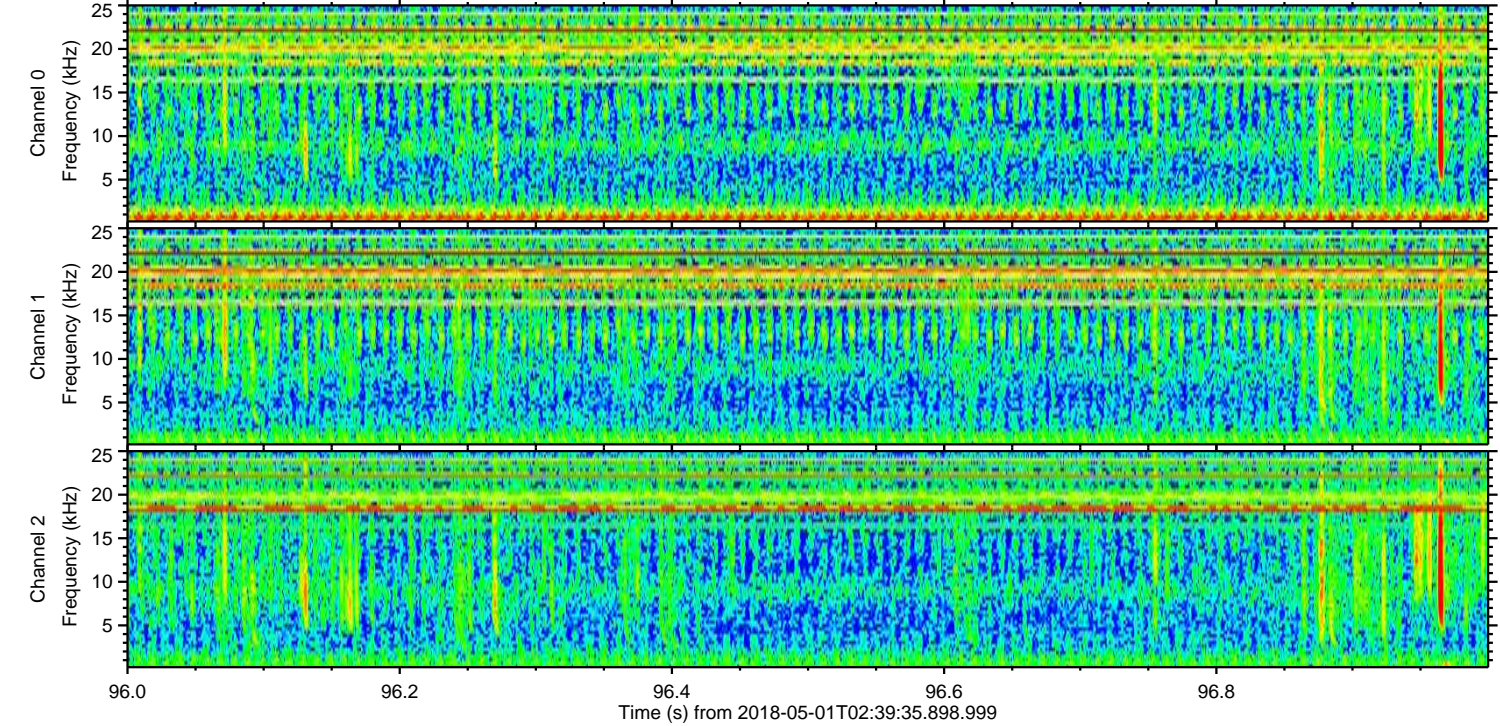
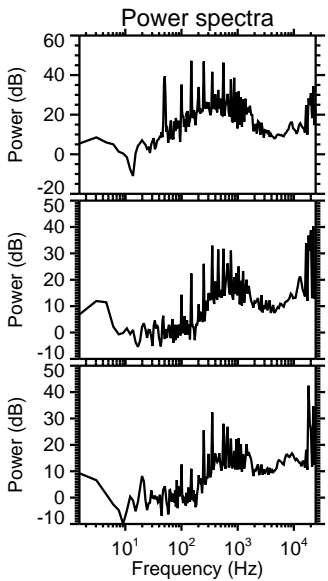
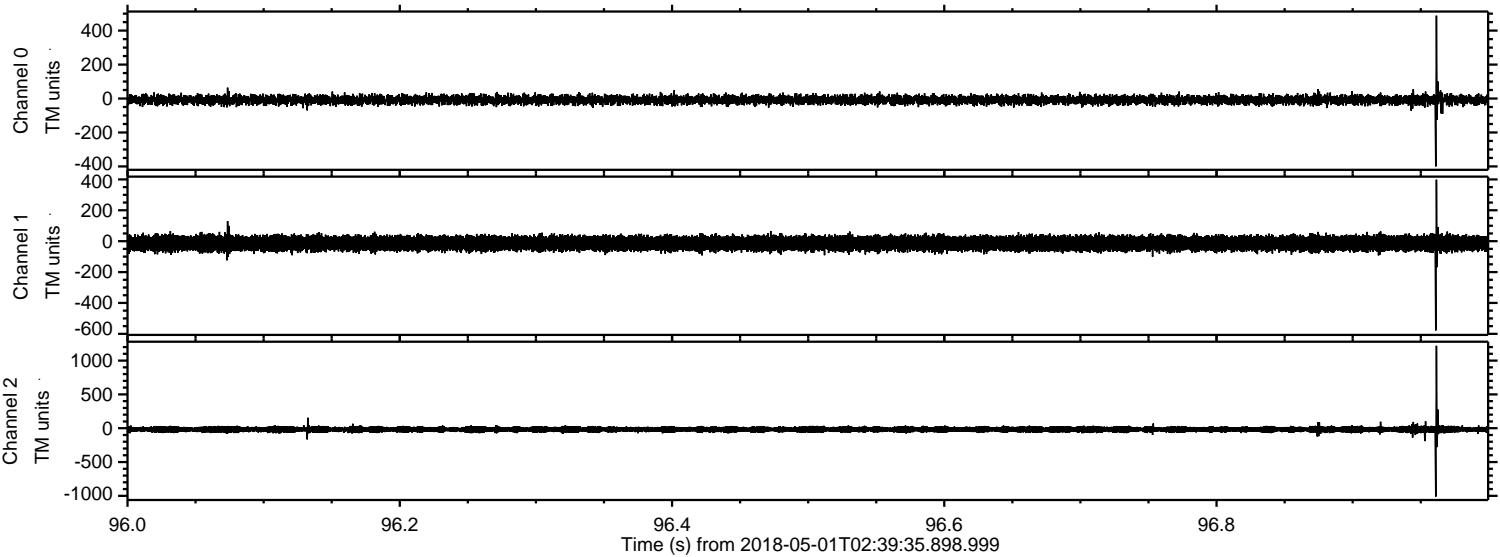


ELMAVAN 3D WAVEFORMS (Measured data sampled at 50 kHz) 51000 packets of 144 samples from 2018-05-01T02:39:35.898.999. Part 145/147





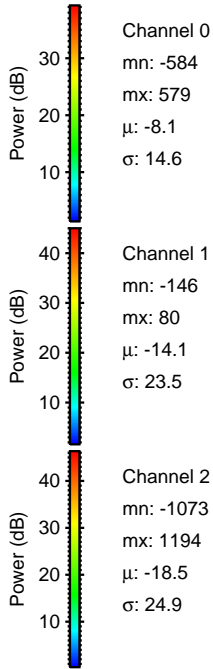
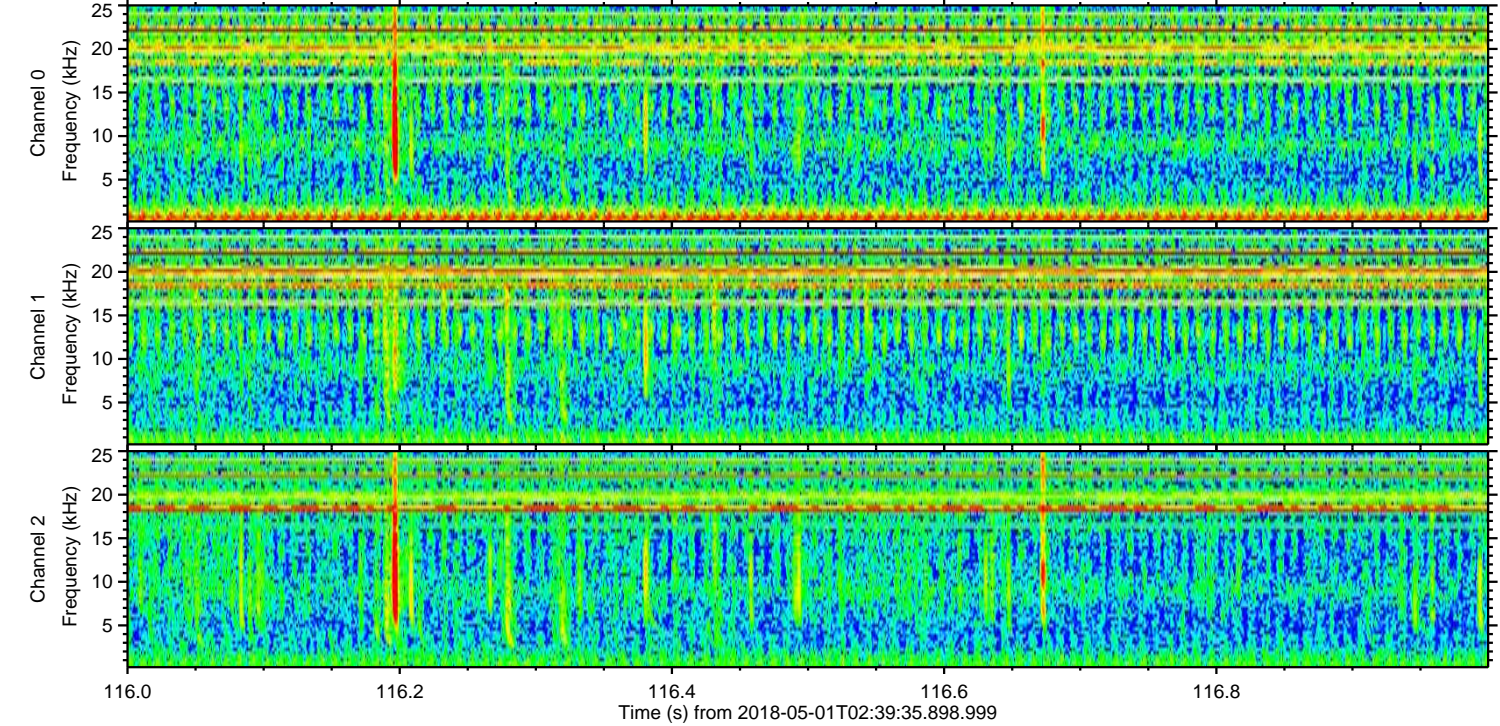
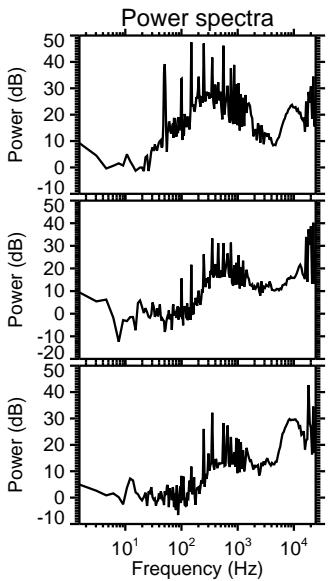
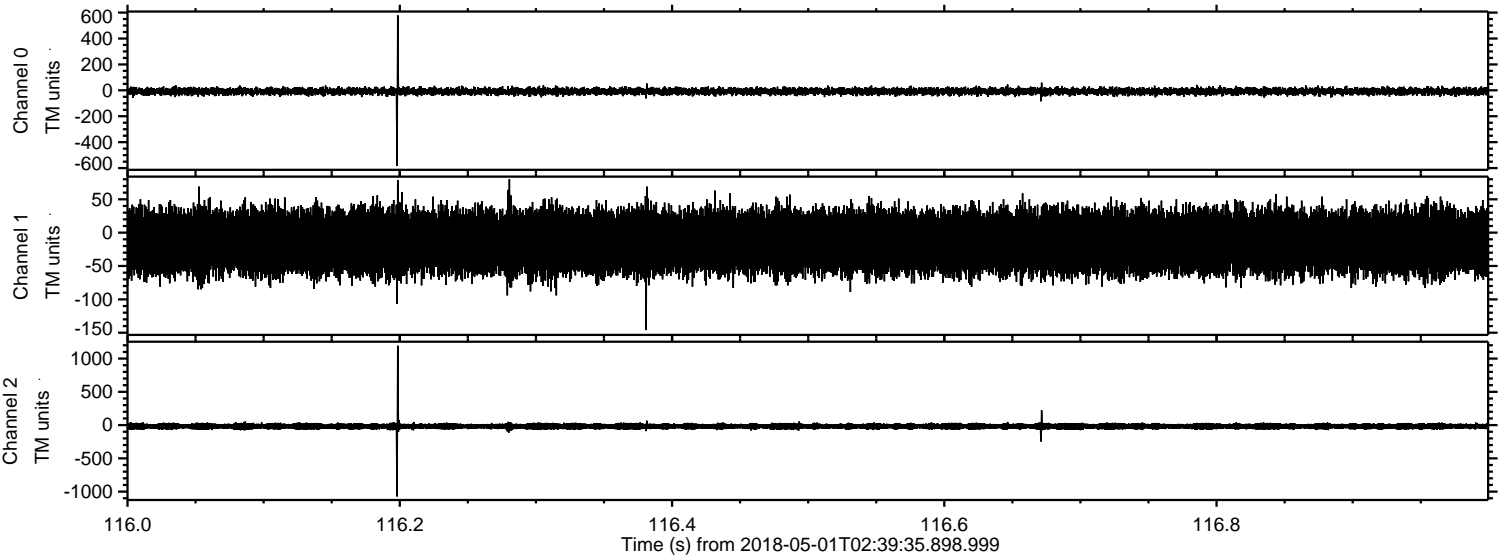
Processed Tue May 1 04:47:26 2018 by ELM ver.2012-10-06 from 001\_\_elm20180501\_023934\_\_dat00.bin





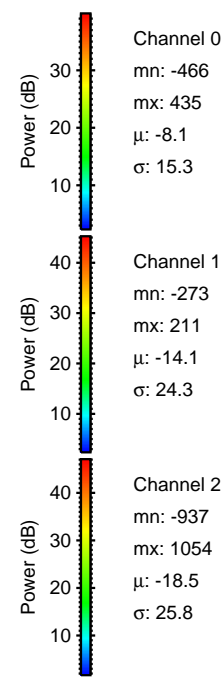
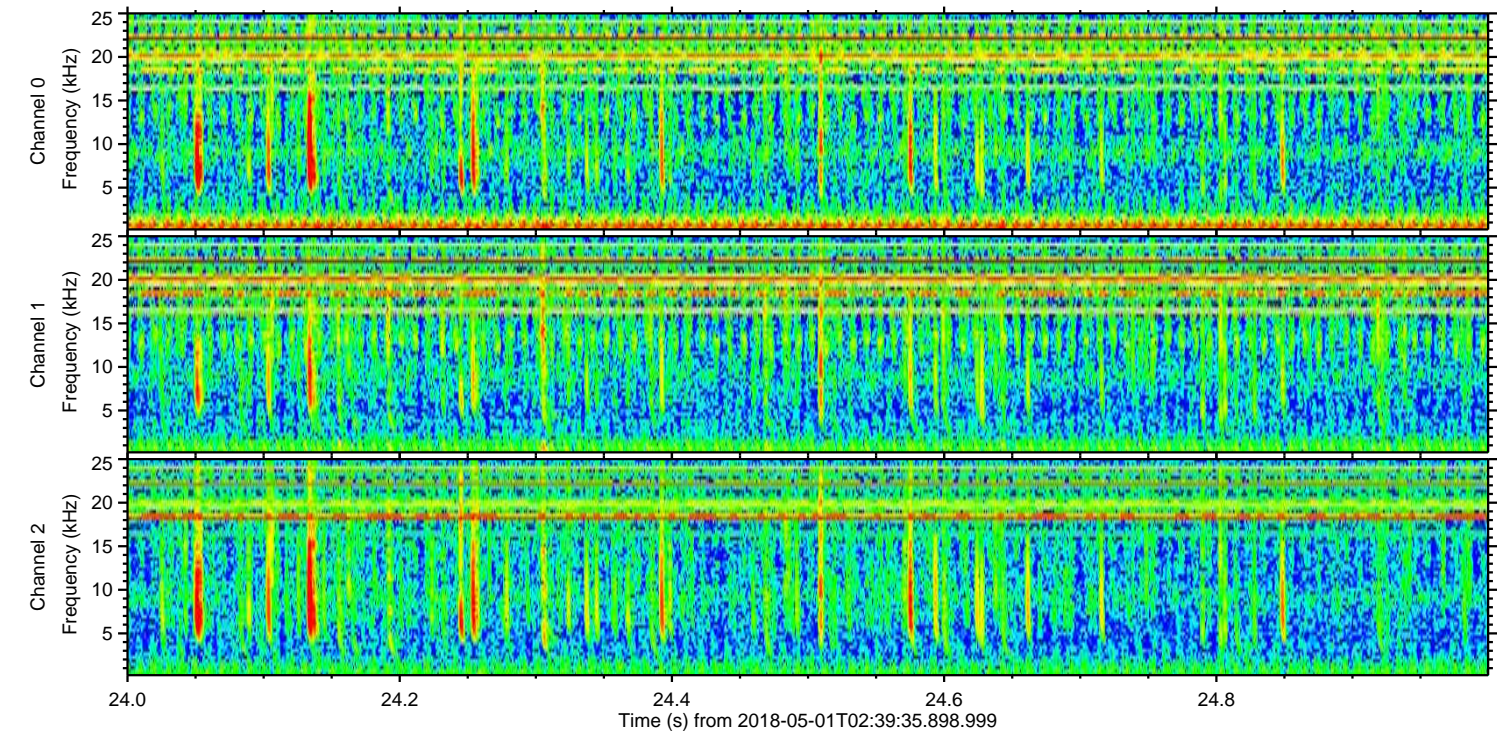
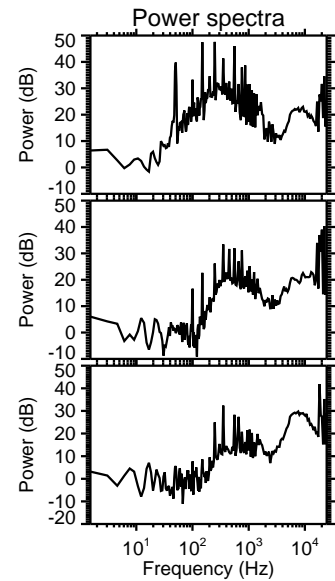
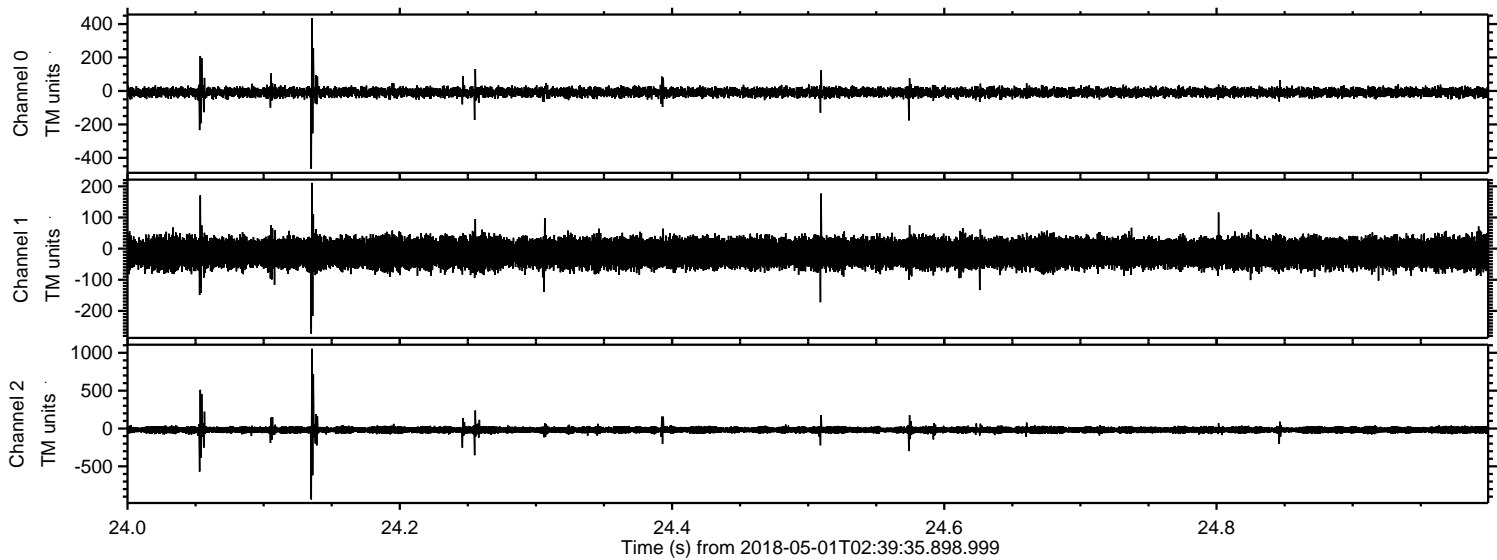
ELMAVAN 3D WAVEFORMS (Measured data sampled at 50 kHz) 51000 packets of 144 samples from 2018-05-01T02:39:35.898.999. Part 117/147

Processed Tue May 1 04:47:27 2018 by ELM ver.2012-10-06 from 001\_\_elm20180501\_023934\_\_dat00.bin





Processed Tue May 1 04:47:28 2018 by ELM ver.2012-10-06 from 001\_\_elm20180501\_023934\_\_dat00.bin





Processed Tue May 1 04:47:28 2018 by ELM ver.2012-10-06 from 001\_\_elm20180501\_023934\_\_dat00.bin

