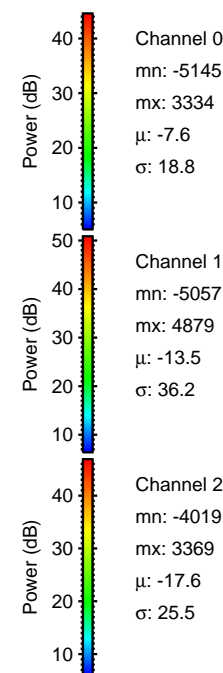
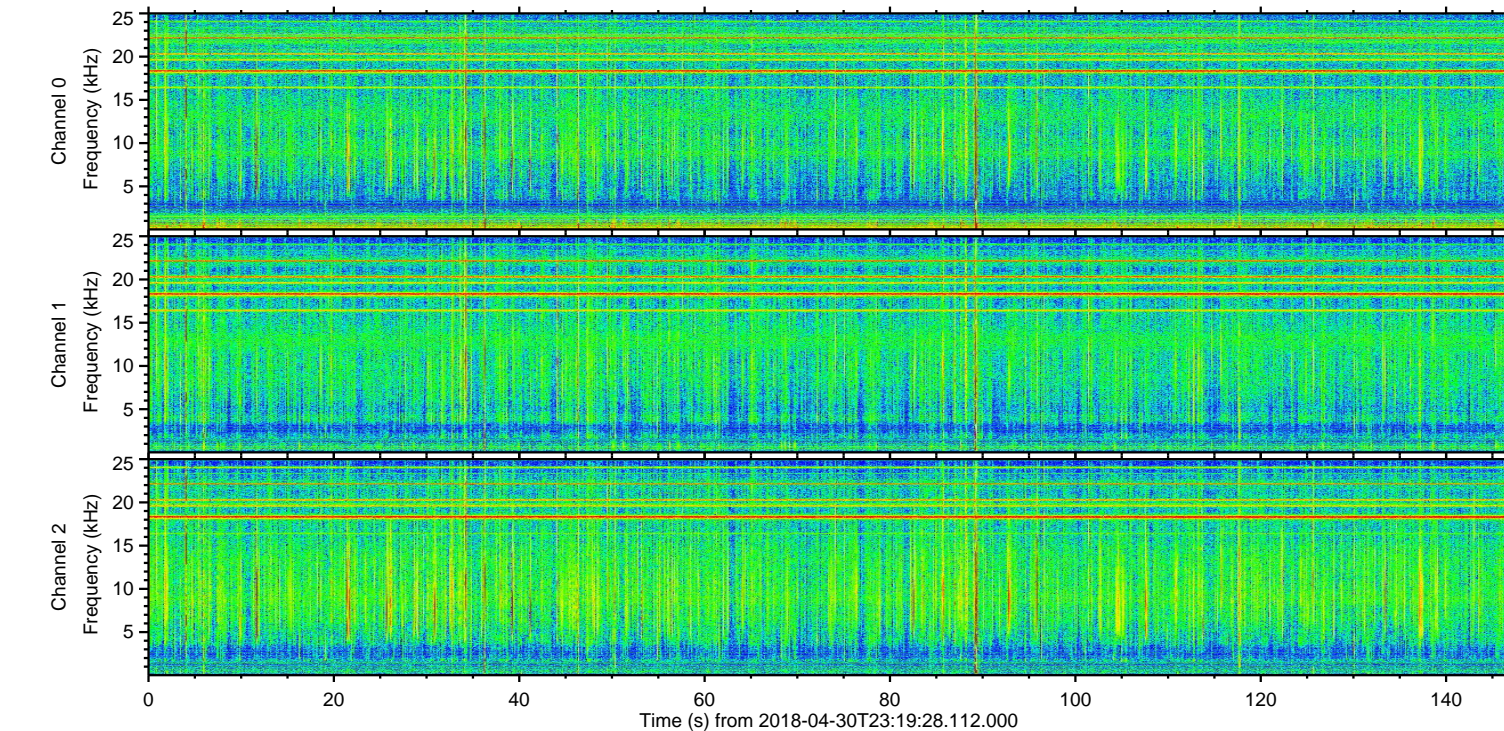
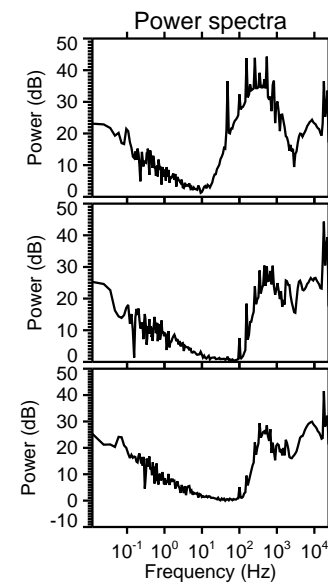
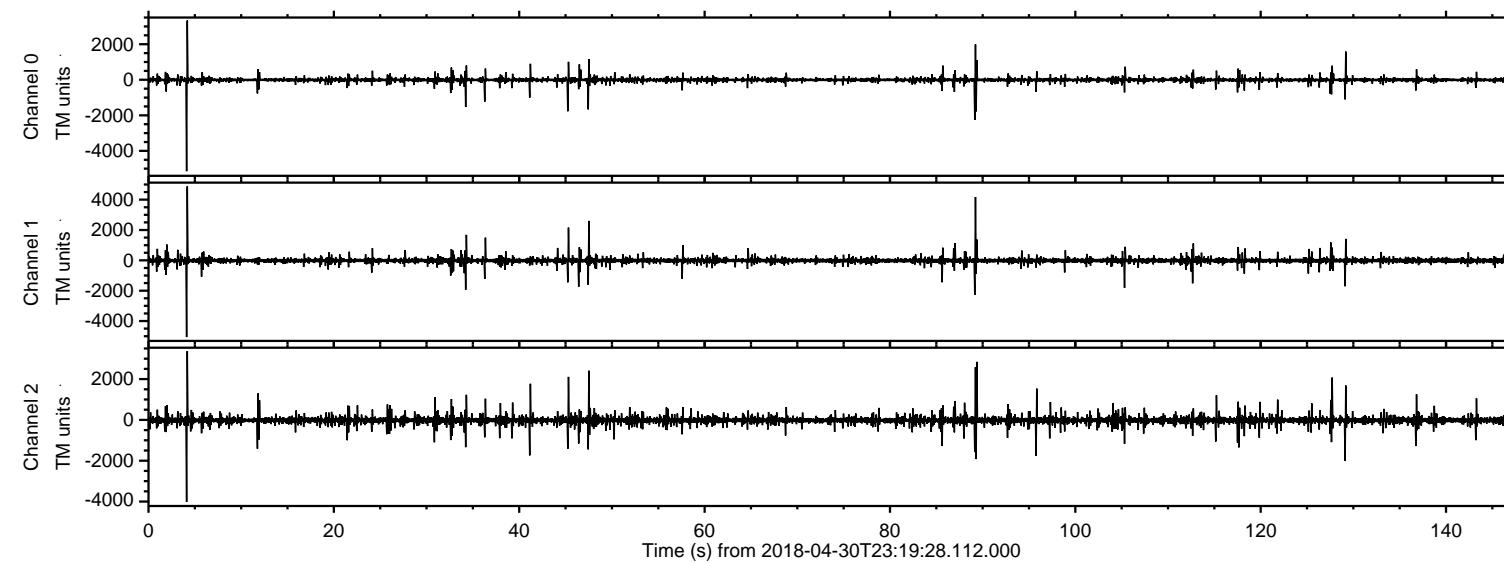
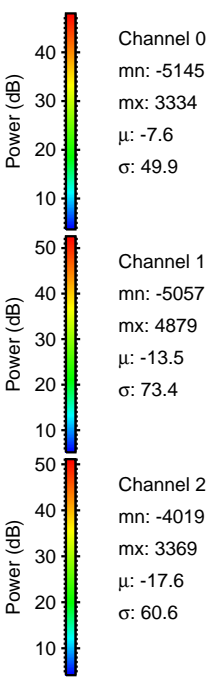
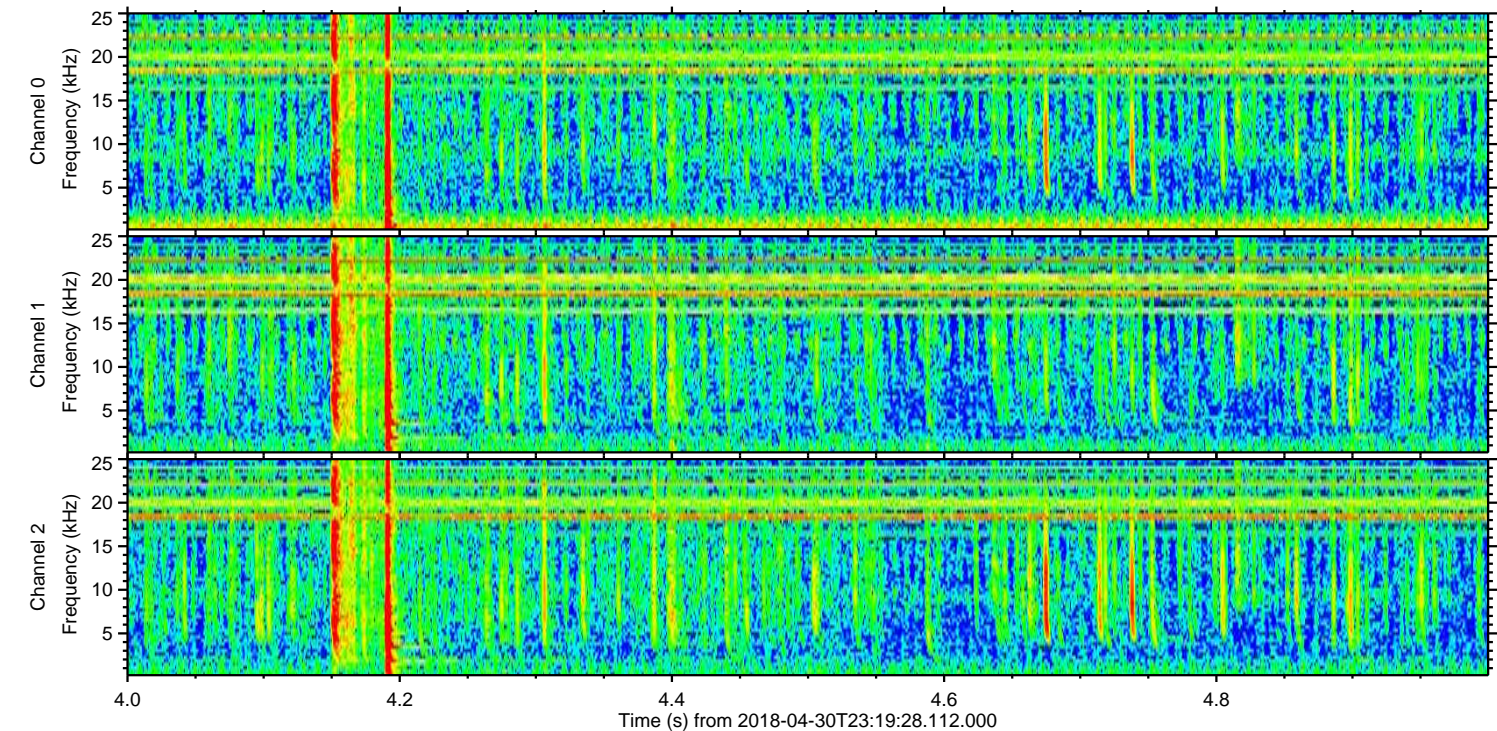
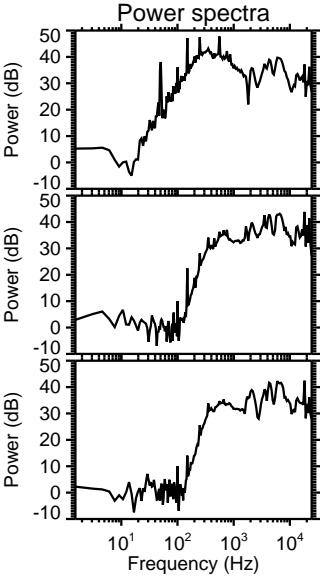
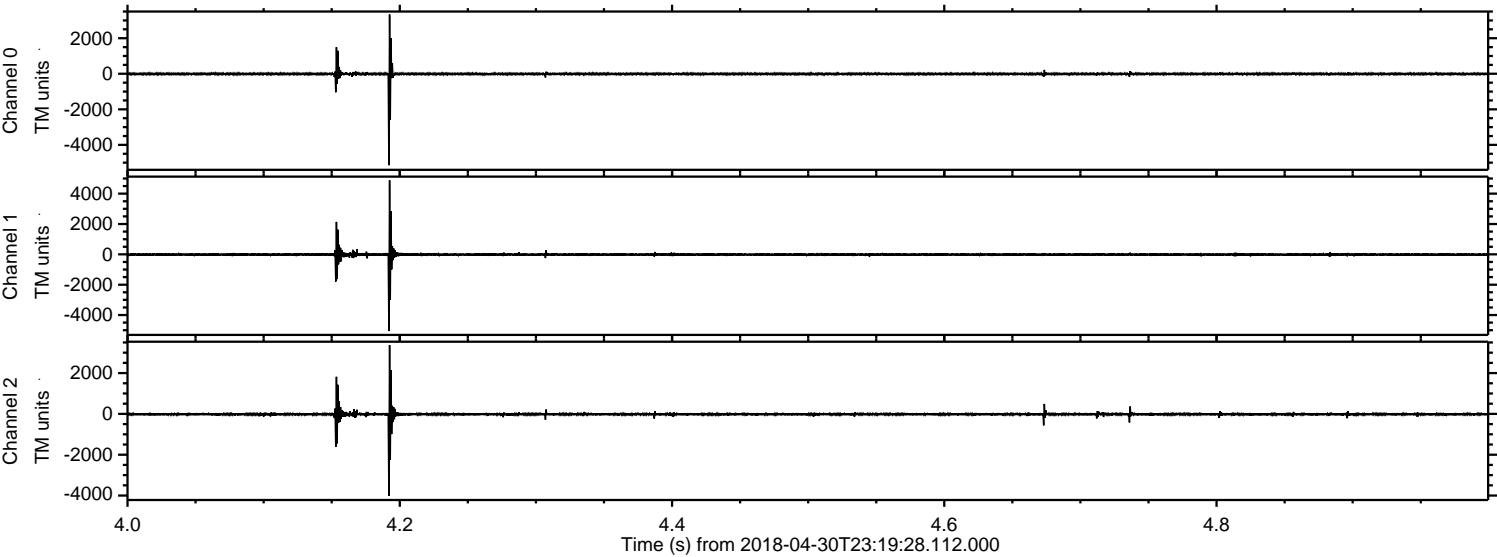


ELMAVAN 3D WAVEFORMS (Measured data sampled at 50 kHz) 51000 packets of 144 samples from 2018-04-30T23:19:28.112.000.

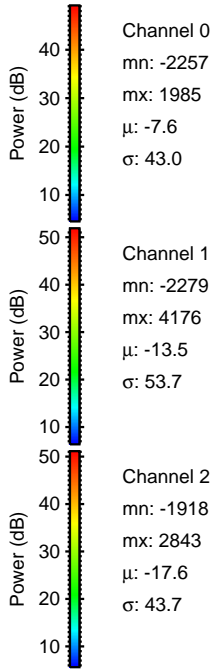
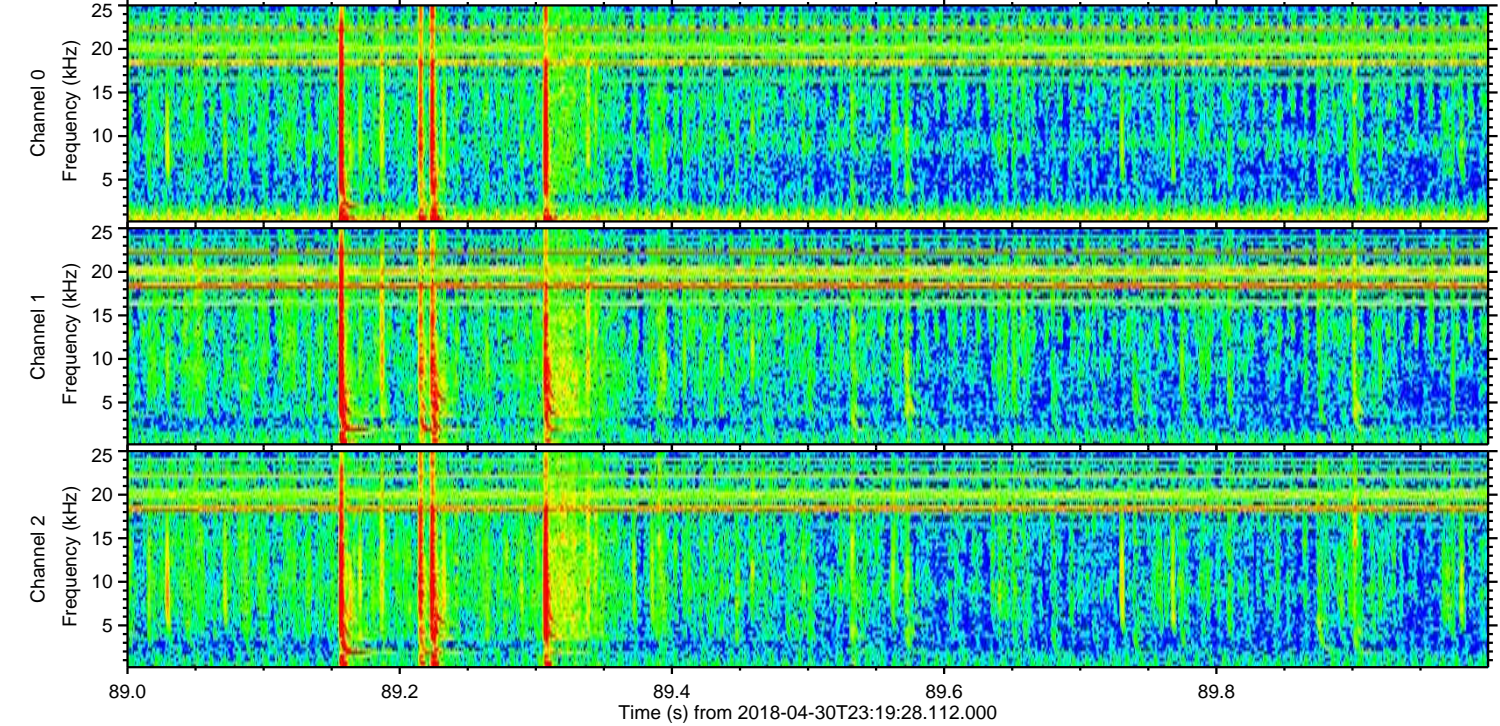
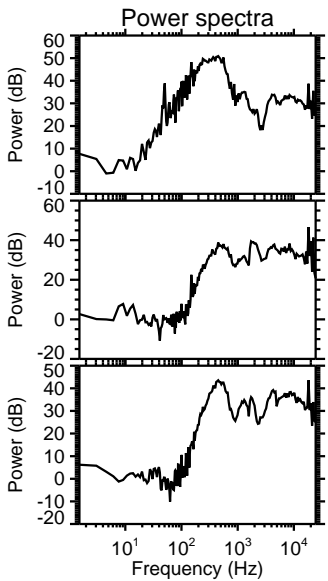
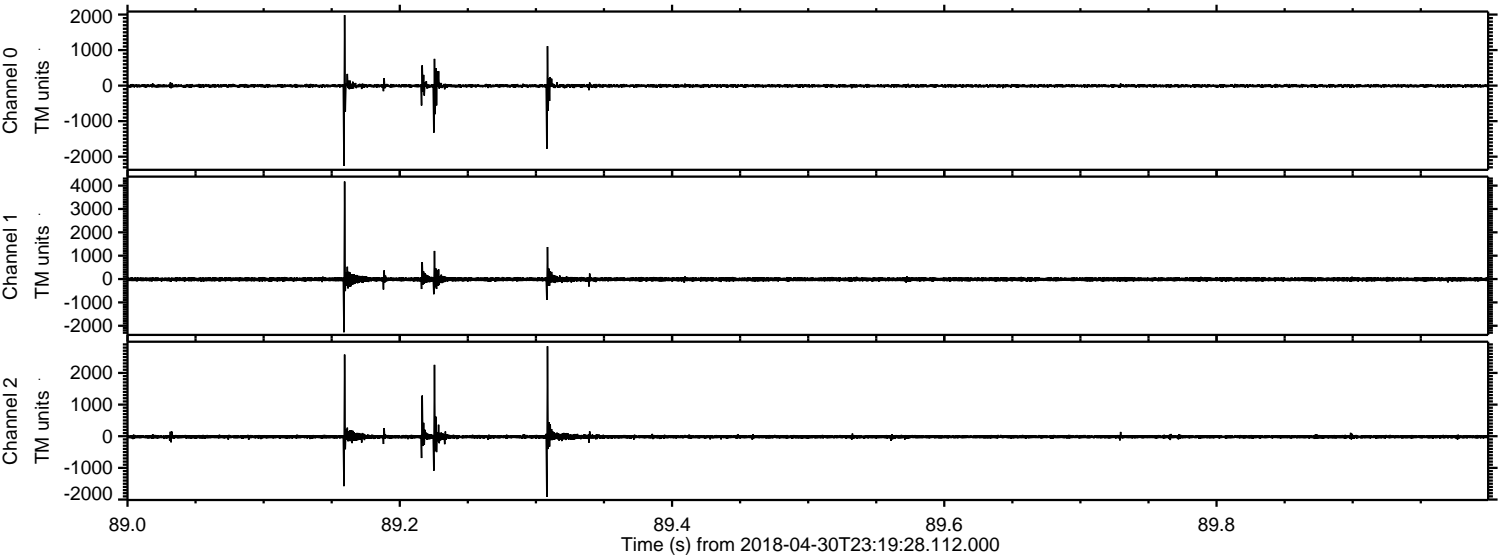
Processed Tue May 1 01:28:45 2018 by ELM ver.2012-10-06 from 001__elm20180430_231927__dat00.bin



Processed Tue May 1 01:28:53 2018 by ELM ver.2012-10-06 from 001__elm20180430_231927__dat00.bin

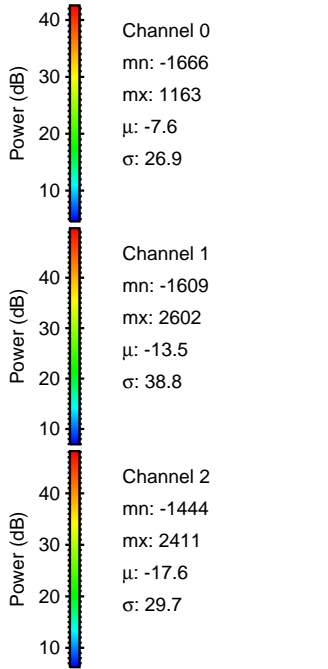
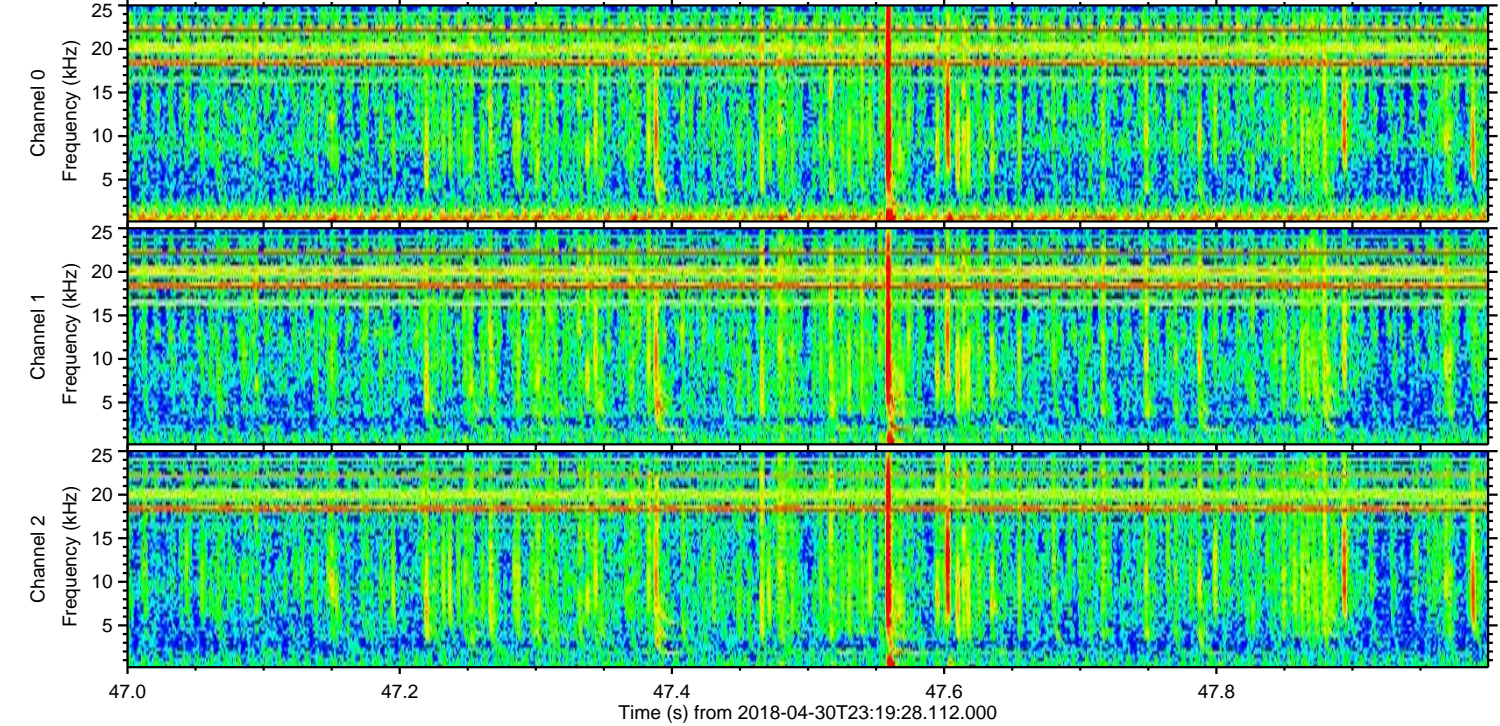
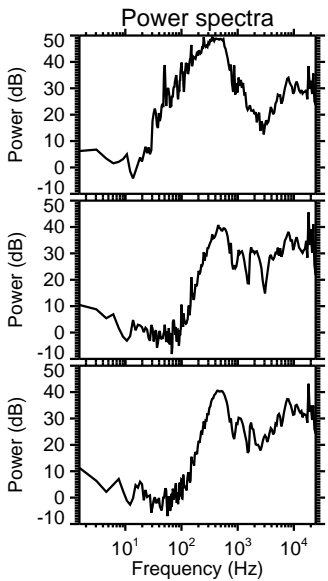
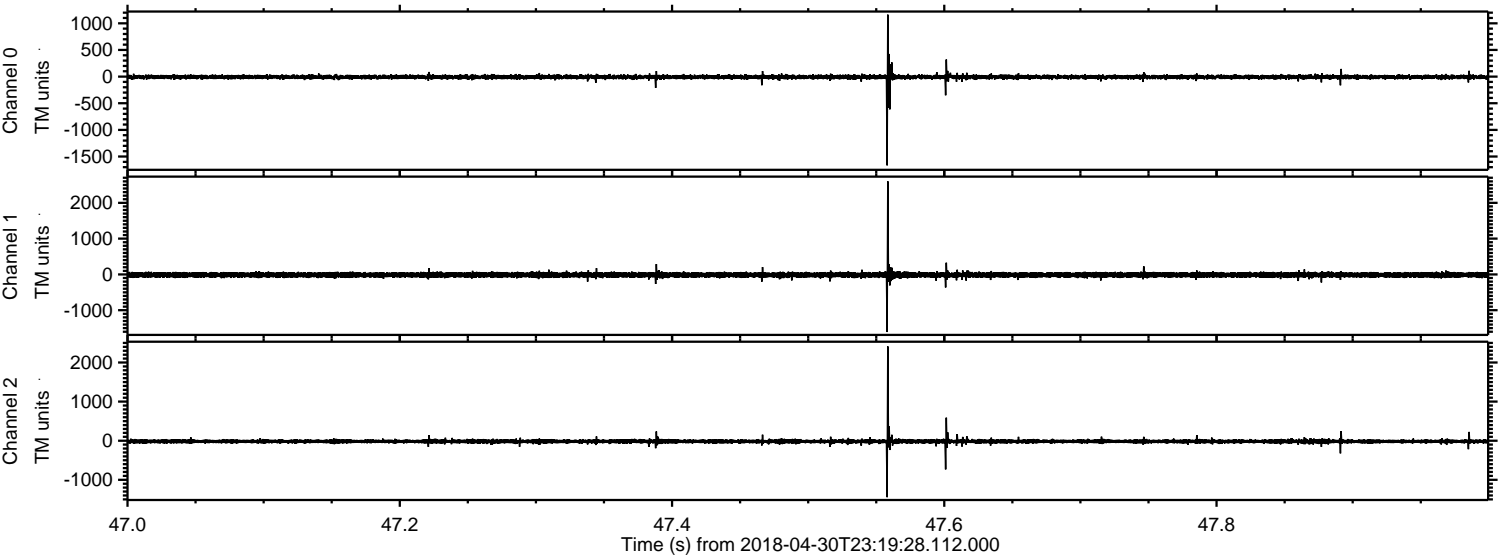


Processed Tue May 1 01:28:54 2018 by ELM ver.2012-10-06 from 001__elm20180430_231927__dat00.bin

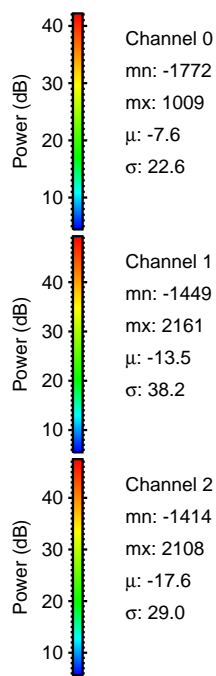
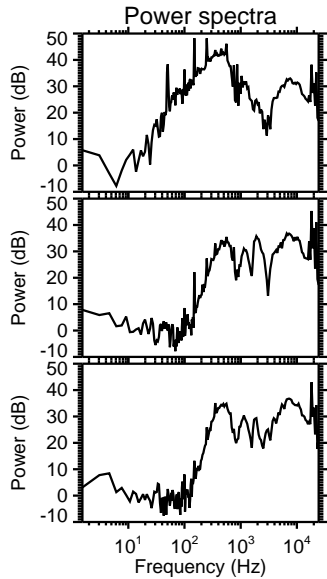
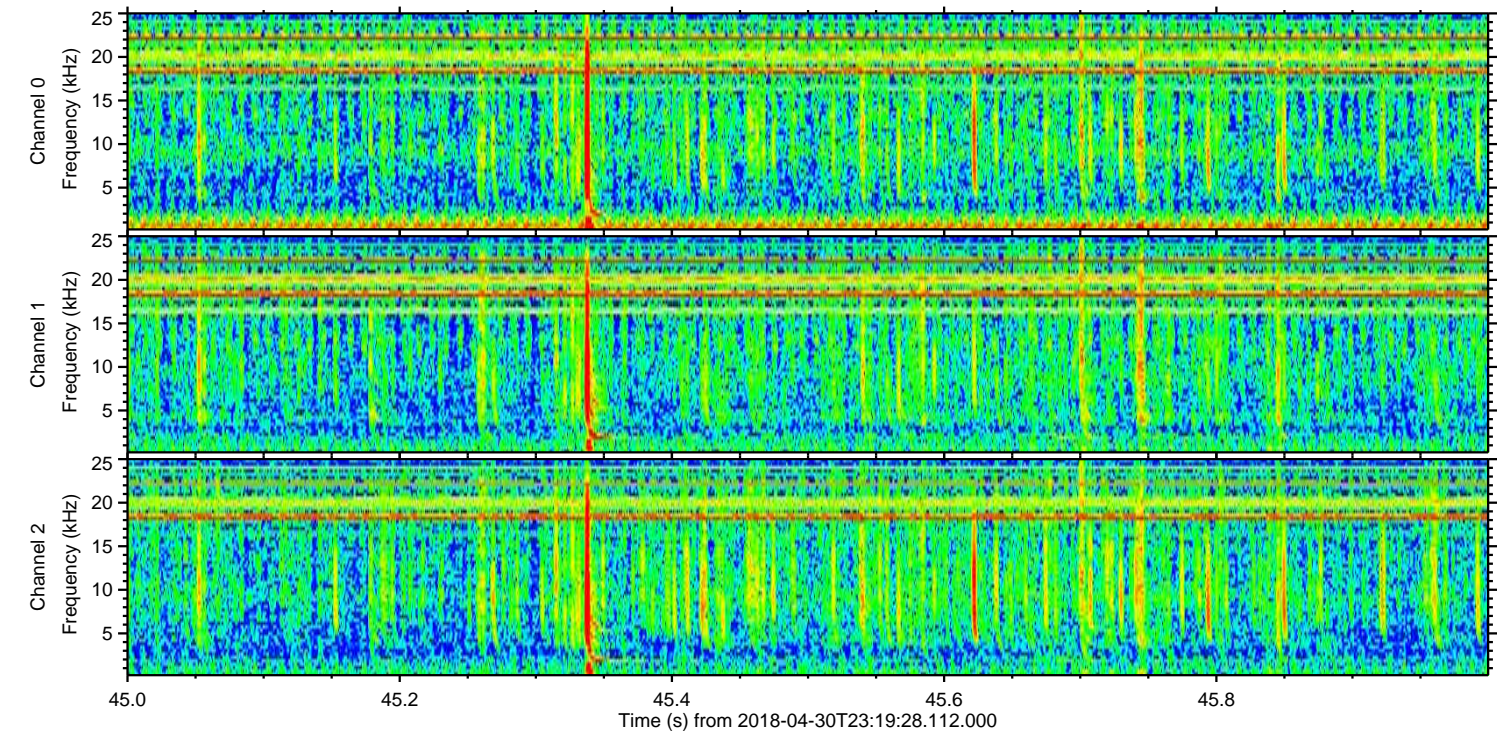
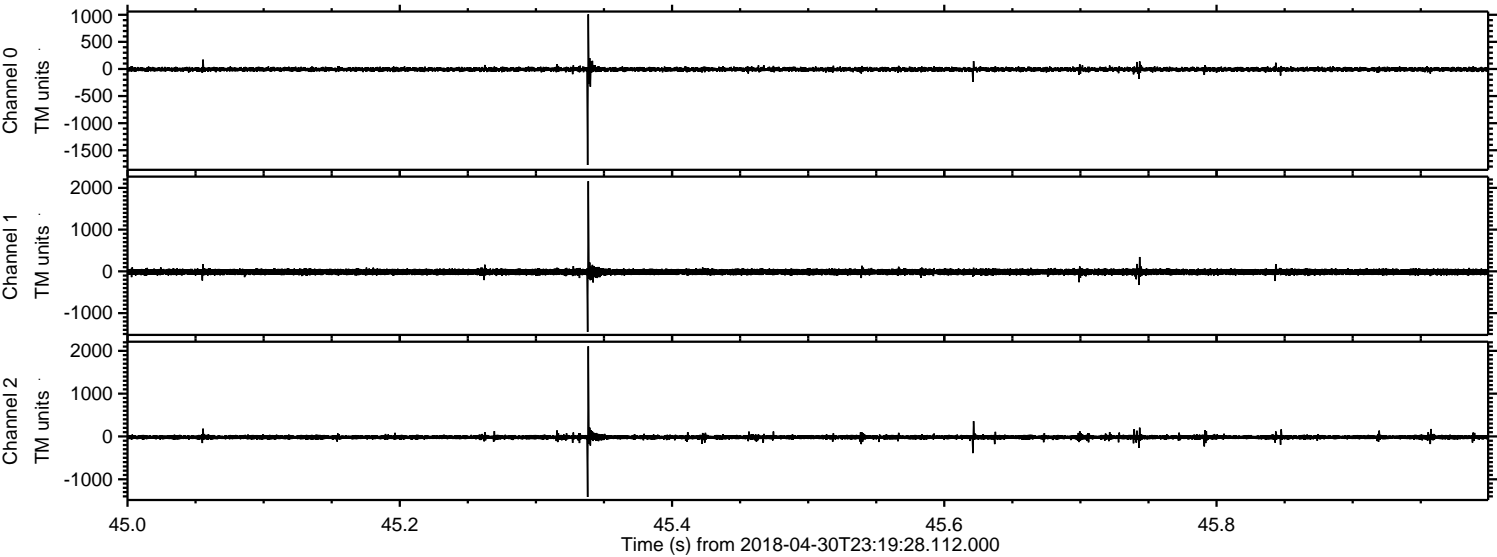


ELMAVAN 3D WAVEFORMS (Measured data sampled at 50 kHz) 51000 packets of 144 samples from 2018-04-30T23:19:28.112.000. Part 48/147

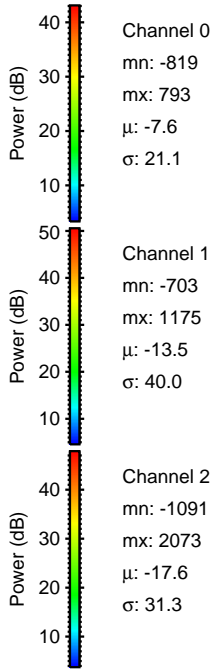
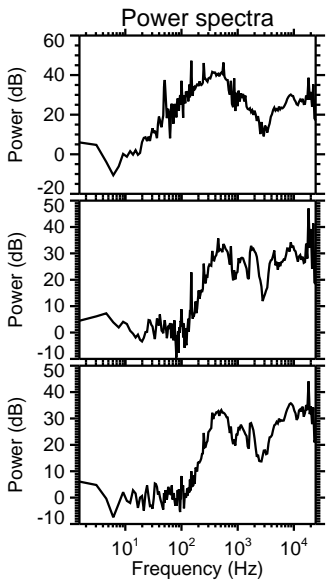
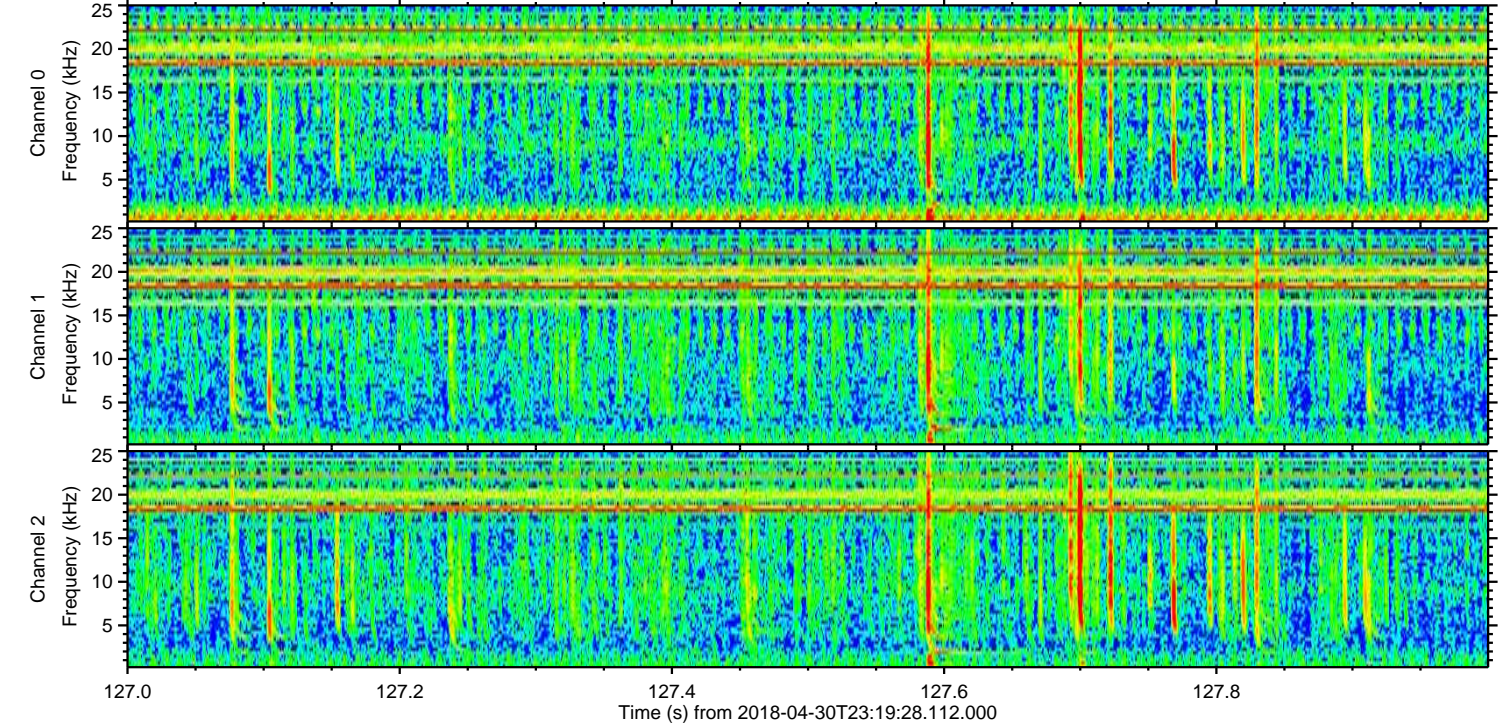
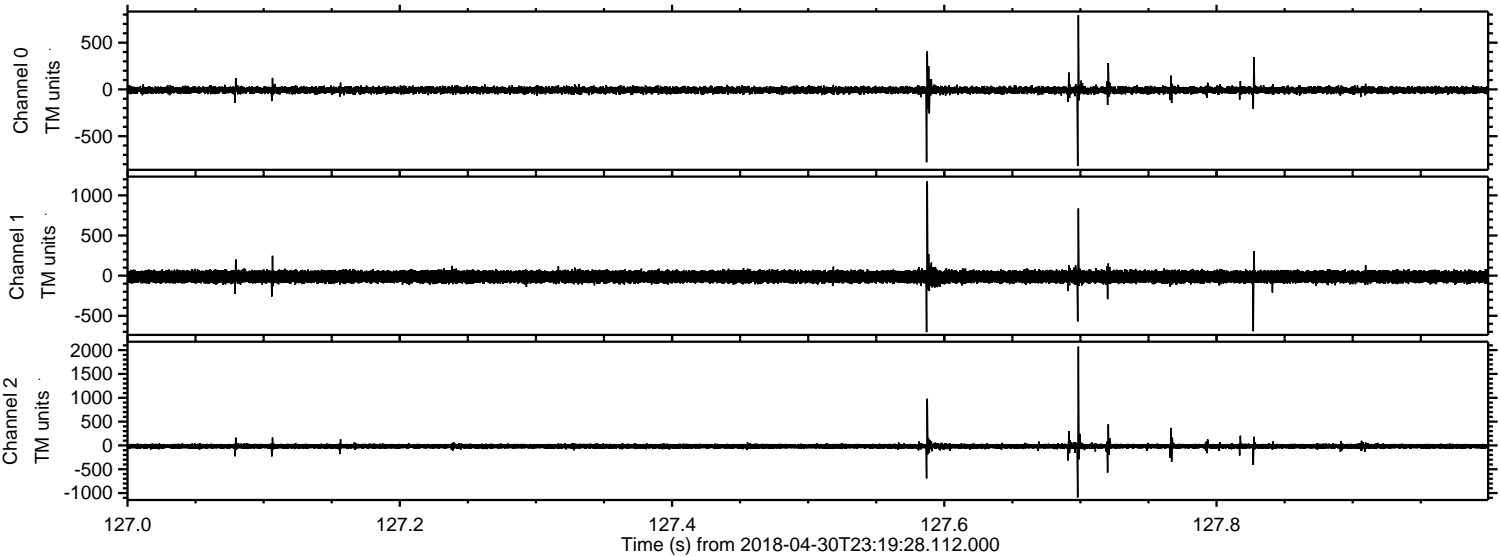
Processed Tue May 1 01:28:55 2018 by ELM ver.2012-10-06 from 001__elm20180430_231927__dat00.bin



Processed Tue May 1 01:28:55 2018 by ELM ver.2012-10-06 from 001__elm20180430_231927__dat00.bin

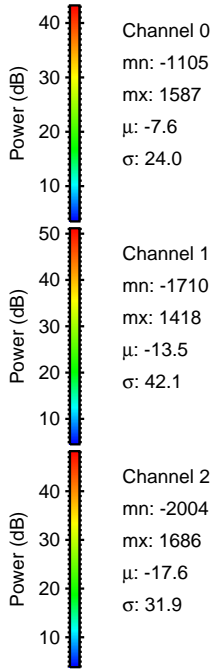
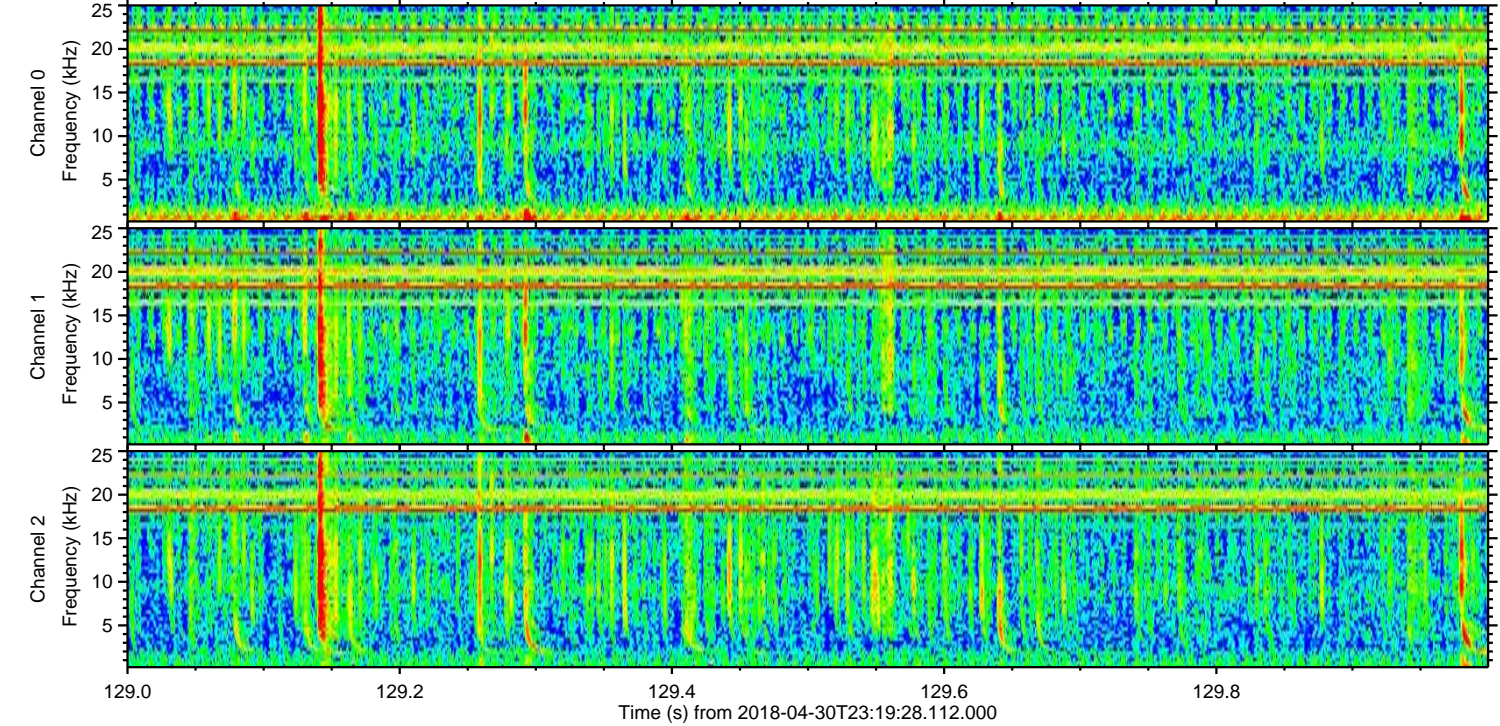
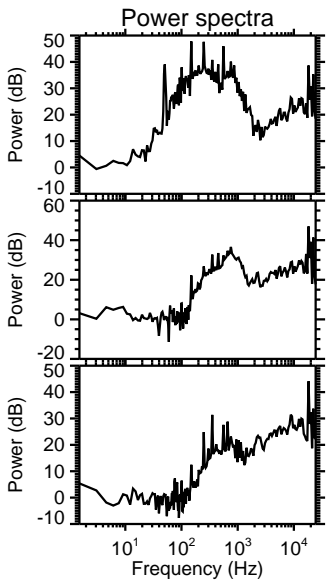
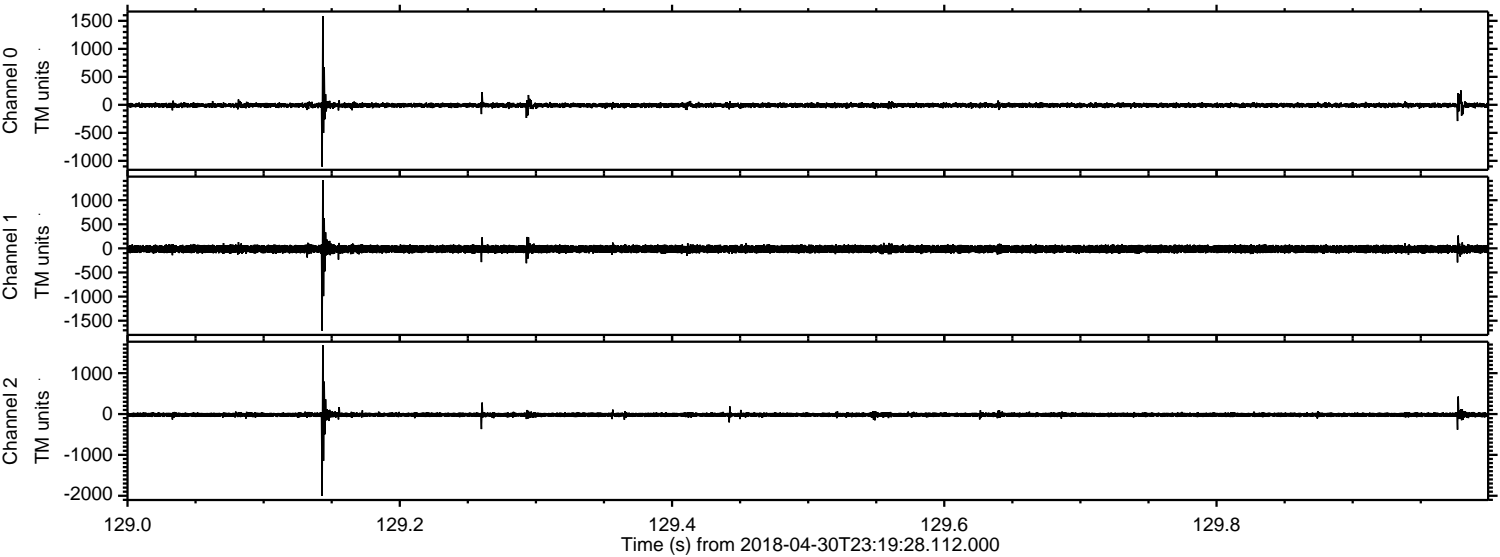


Processed Tue May 1 01:28:56 2018 by ELM ver.2012-10-06 from 001__elm20180430_231927__dat00.bin

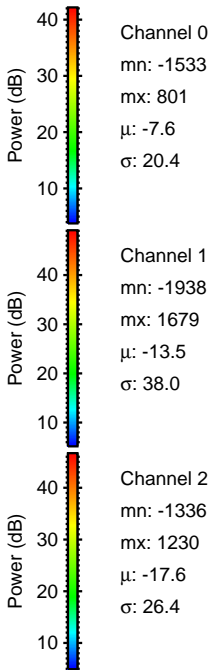
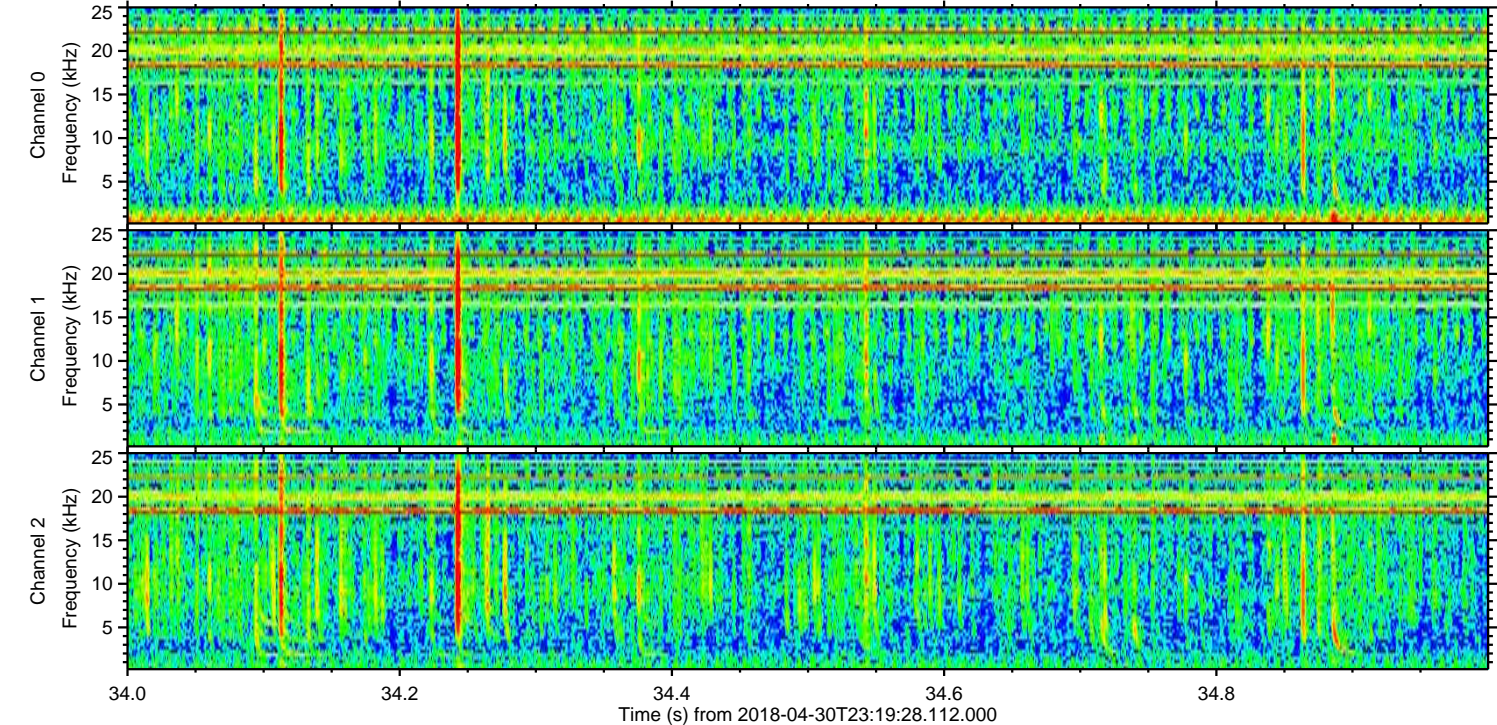
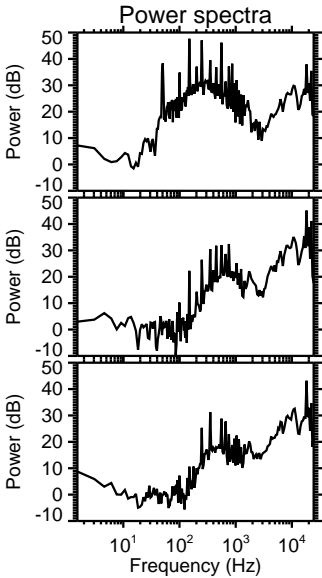
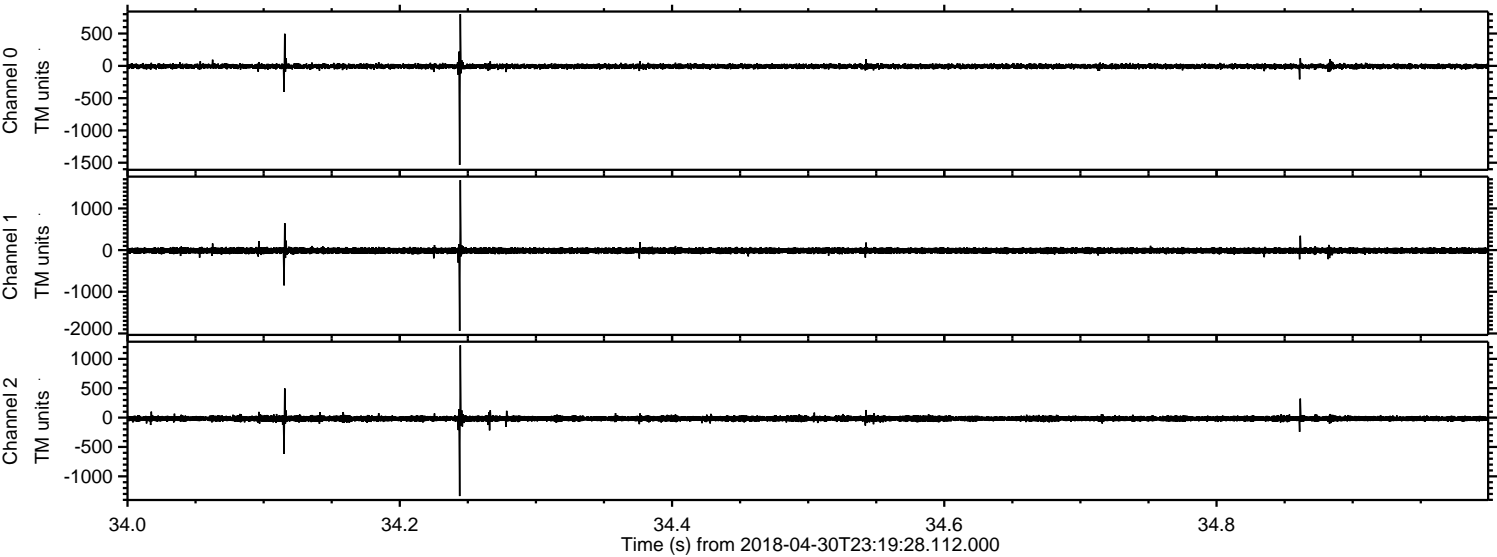


ELMAVAN 3D WAVEFORMS (Measured data sampled at 50 kHz) 51000 packets of 144 samples from 2018-04-30T23:19:28.112.000. Part 130/147

Processed Tue May 1 01:28:57 2018 by ELM ver.2012-10-06 from 001__elm20180430_231927__dat00.bin

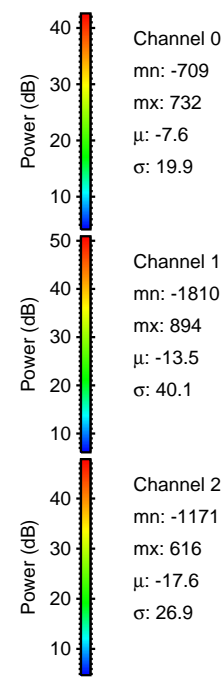
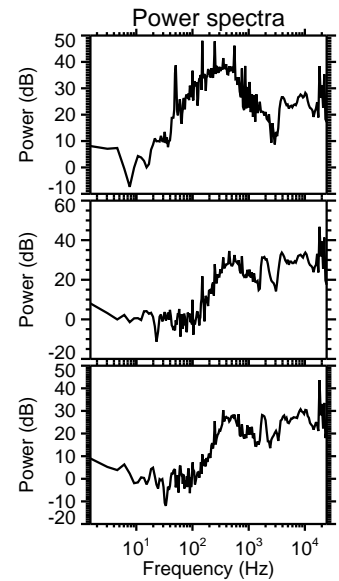
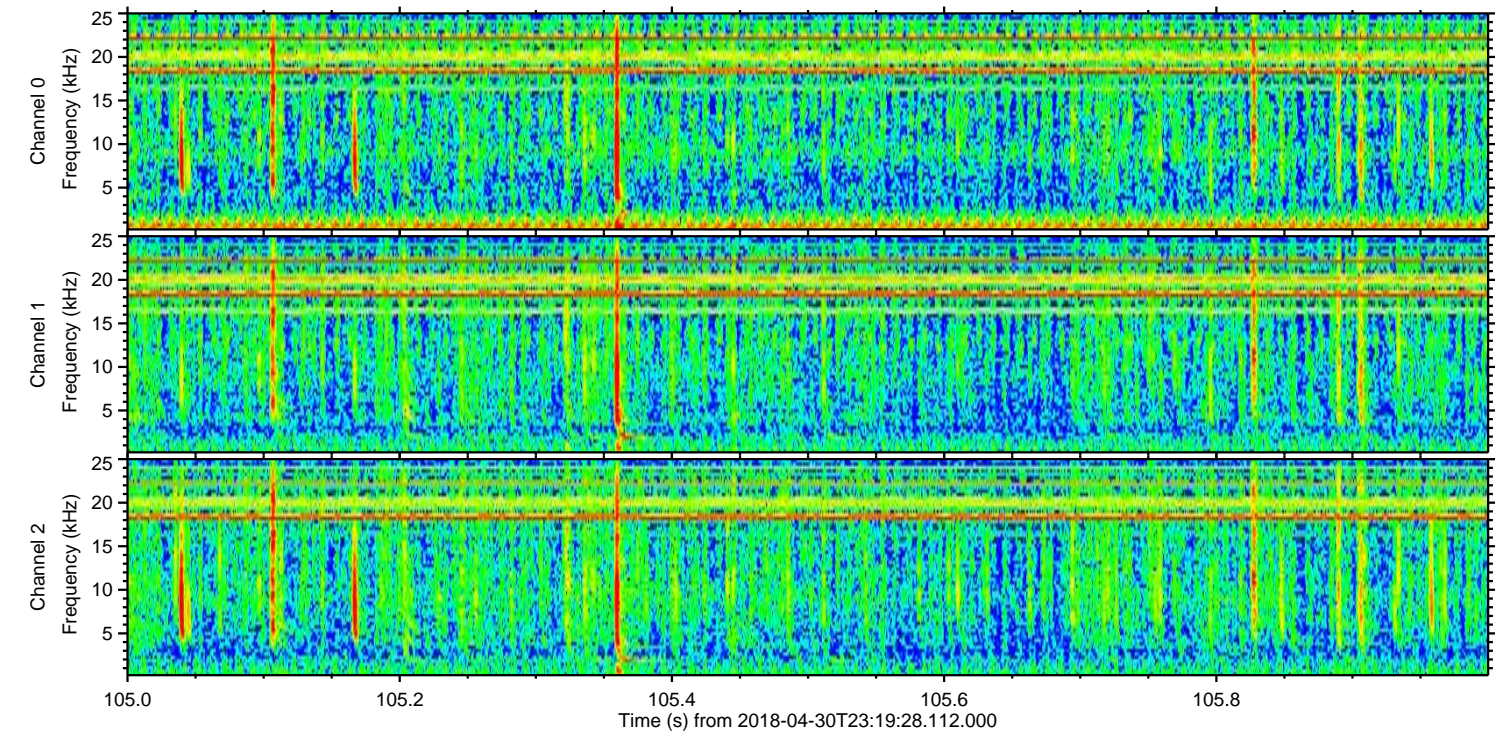
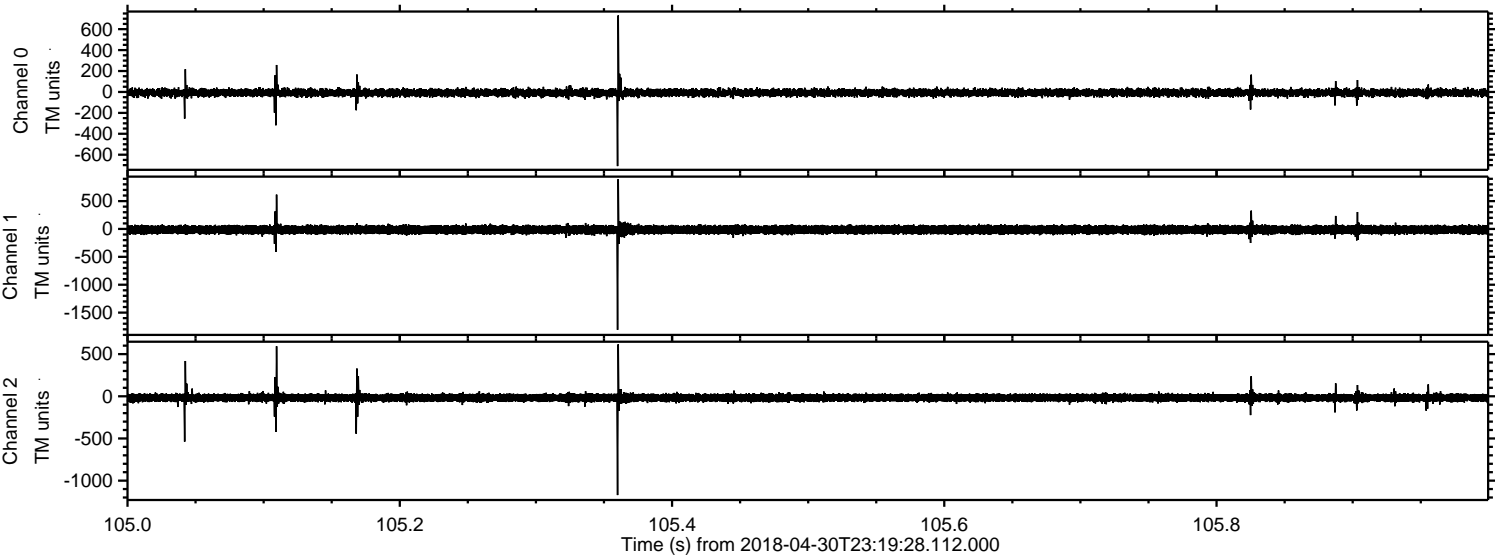


Processed Tue May 1 01:28:58 2018 by ELM ver.2012-10-06 from 001__elm20180430_231927__dat00.bin



ELMAVAN 3D WAVEFORMS (Measured data sampled at 50 kHz) 51000 packets of 144 samples from 2018-04-30T23:19:28.112.000. Part 106/147

Processed Tue May 1 01:28:58 2018 by ELM ver.2012-10-06 from 001__elm20180430_231927__dat00.bin



Channel 0
mn: -709
mx: 732
 μ : -7.6
 σ : 19.9

Channel 1
mn: -1810
mx: 894
 μ : -13.5
 σ : 40.1

Channel 2
mn: -1171
mx: 616
 μ : -17.6
 σ : 26.9

Processed Tue May 1 01:28:59 2018 by ELM ver.2012-10-06 from 001__elm20180430_231927__dat00.bin

