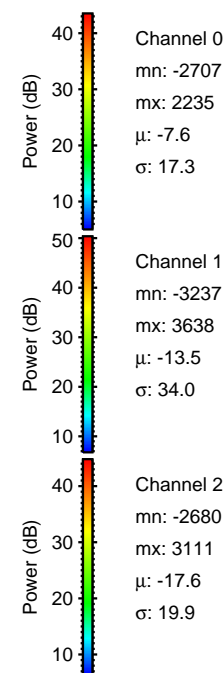
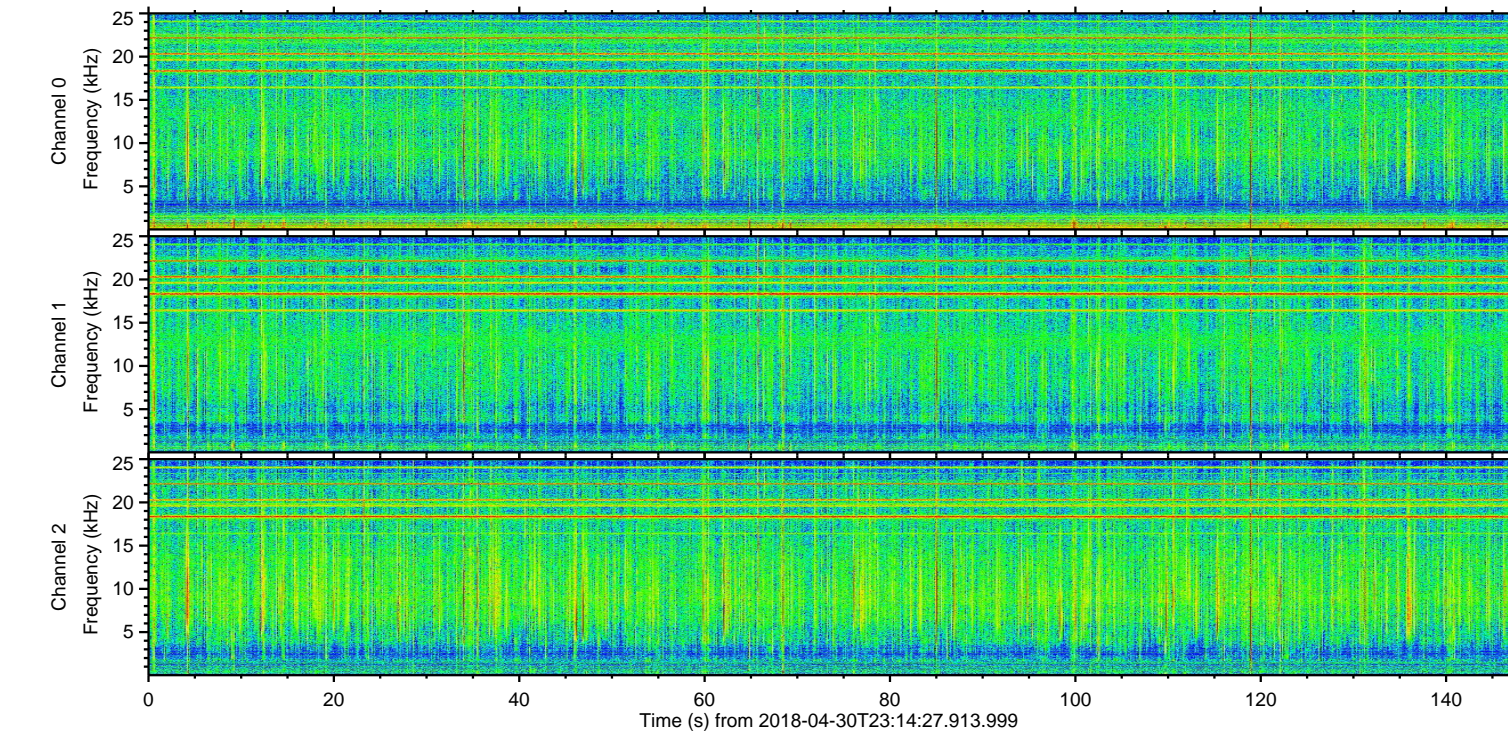
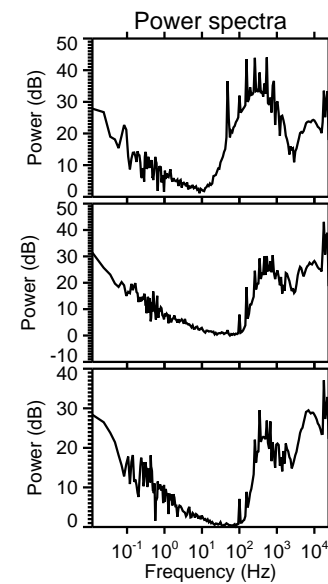
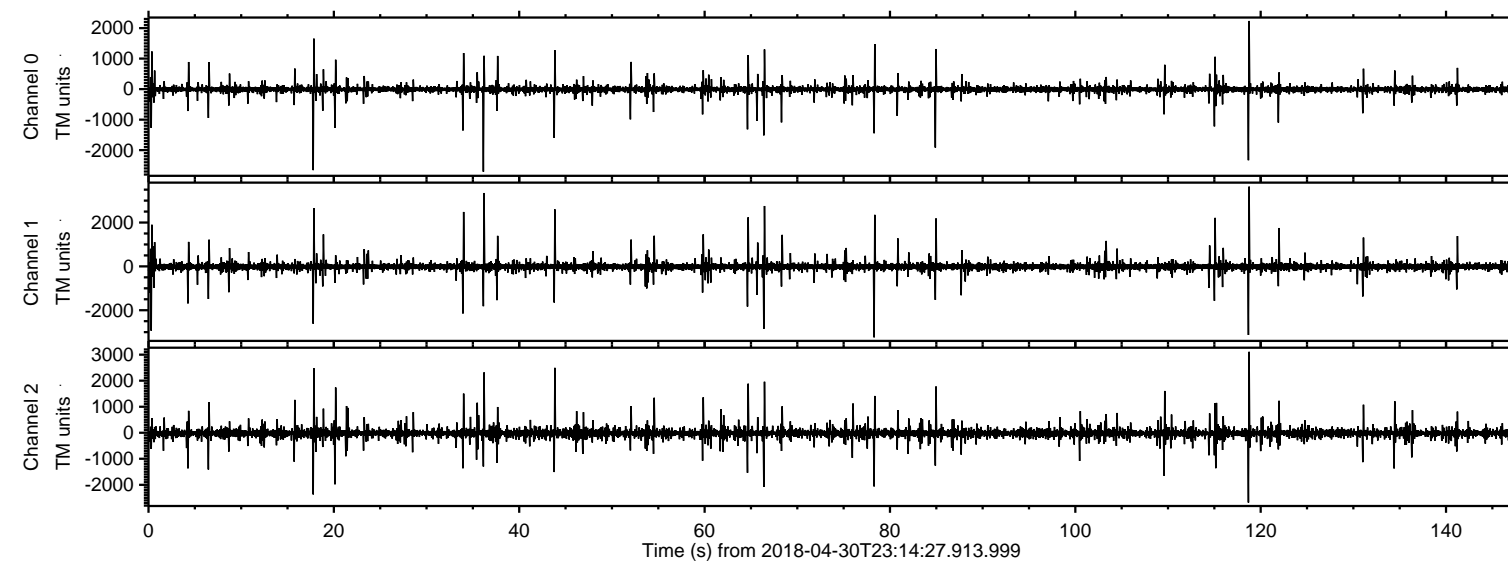


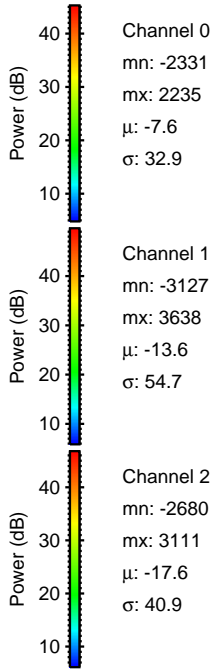
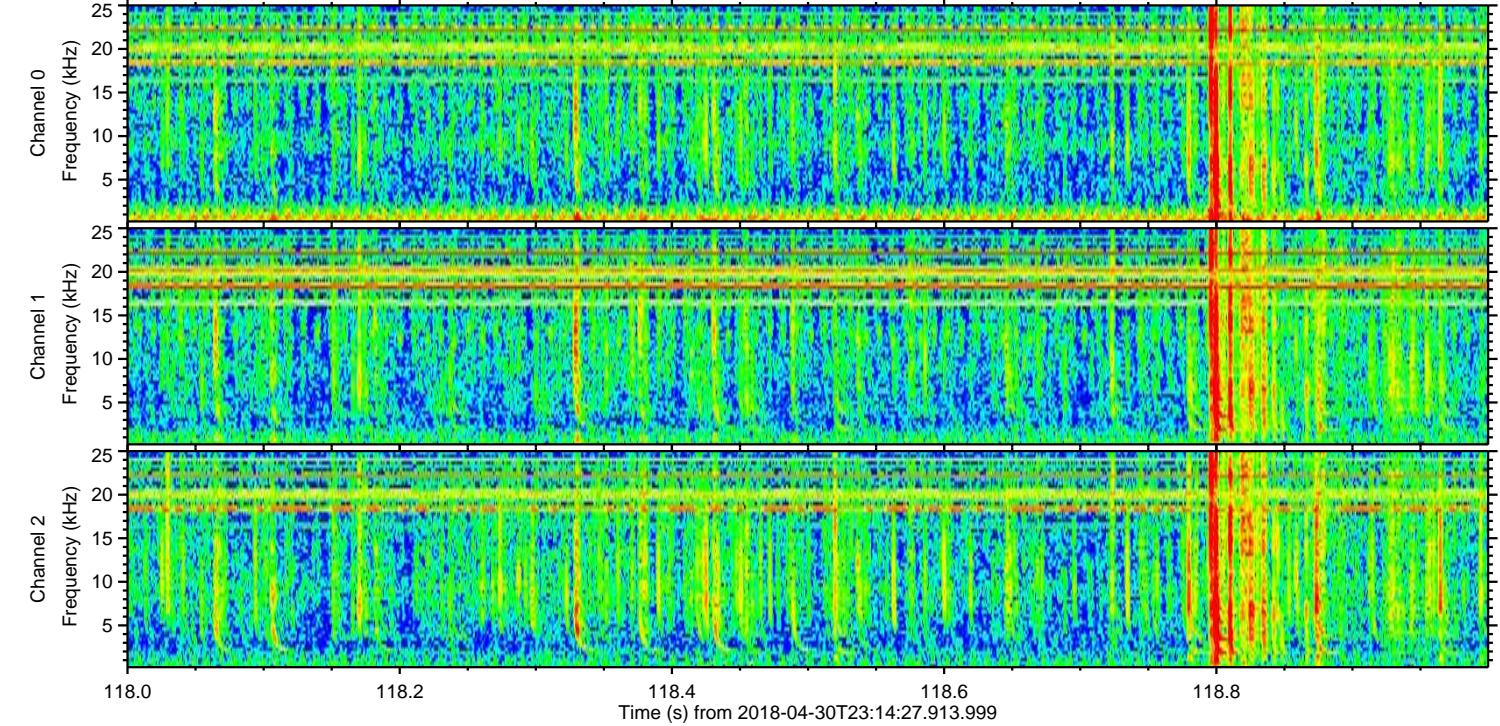
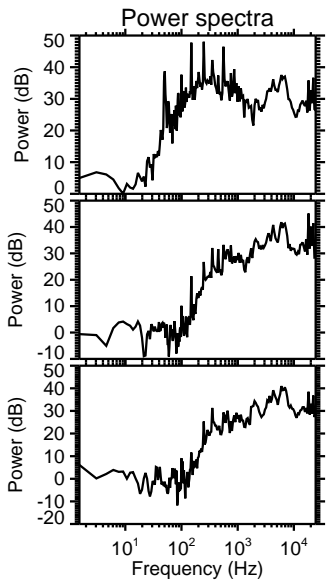
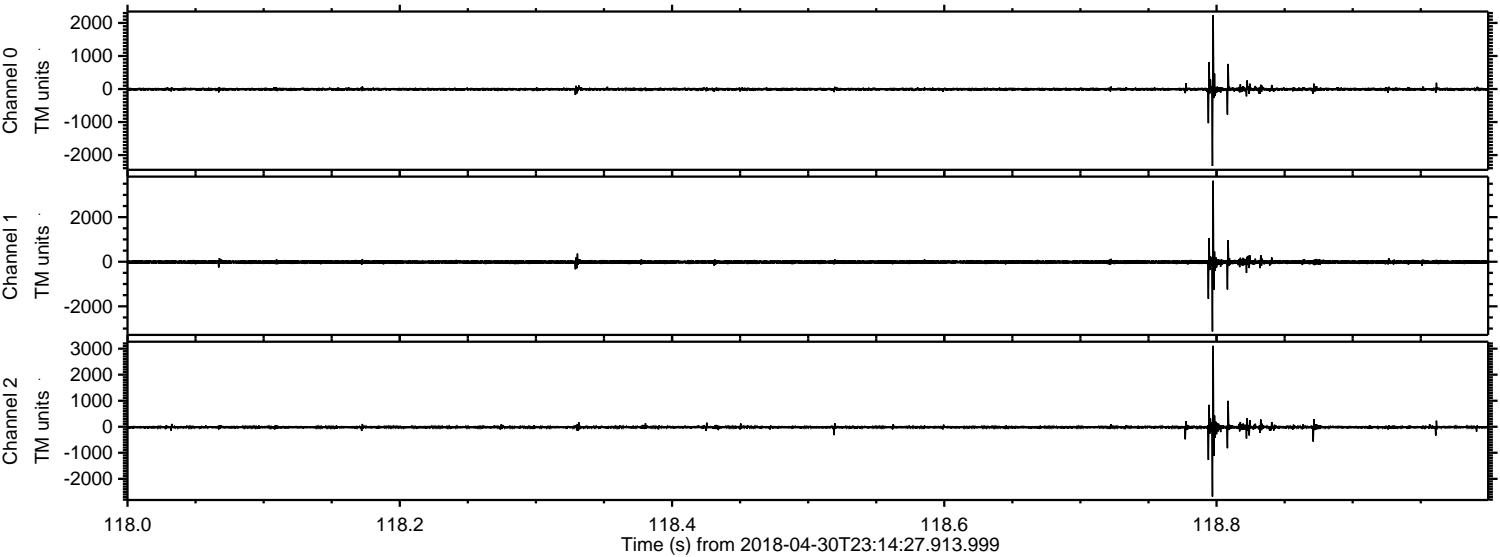
ELMAVAN 3D WAVEFORMS (Measured data sampled at 50 kHz) 51000 packets of 144 samples from 2018-04-30T23:14:27.913.999.

Processed Tue May 1 01:22:21 2018 by ELM ver.2012-10-06 from 001__elm20180430_231426__dat00.bin

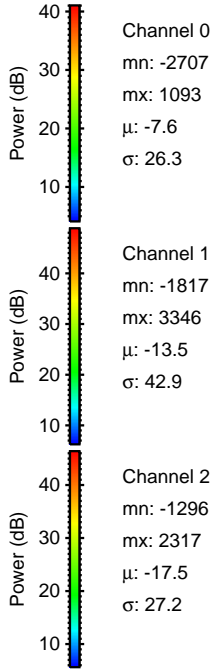
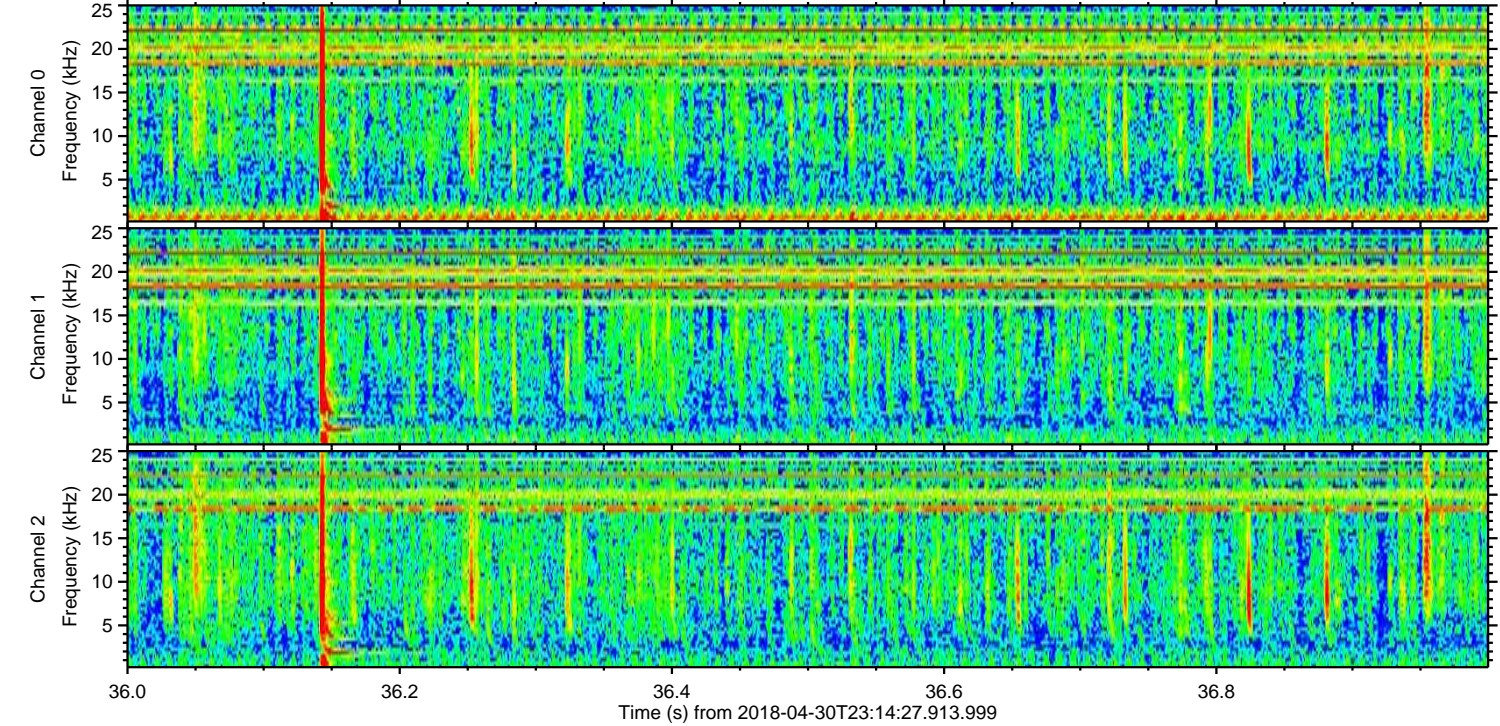
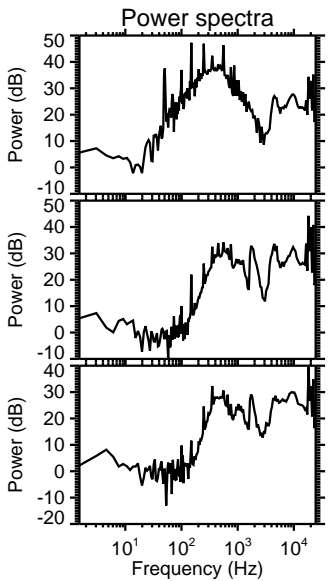
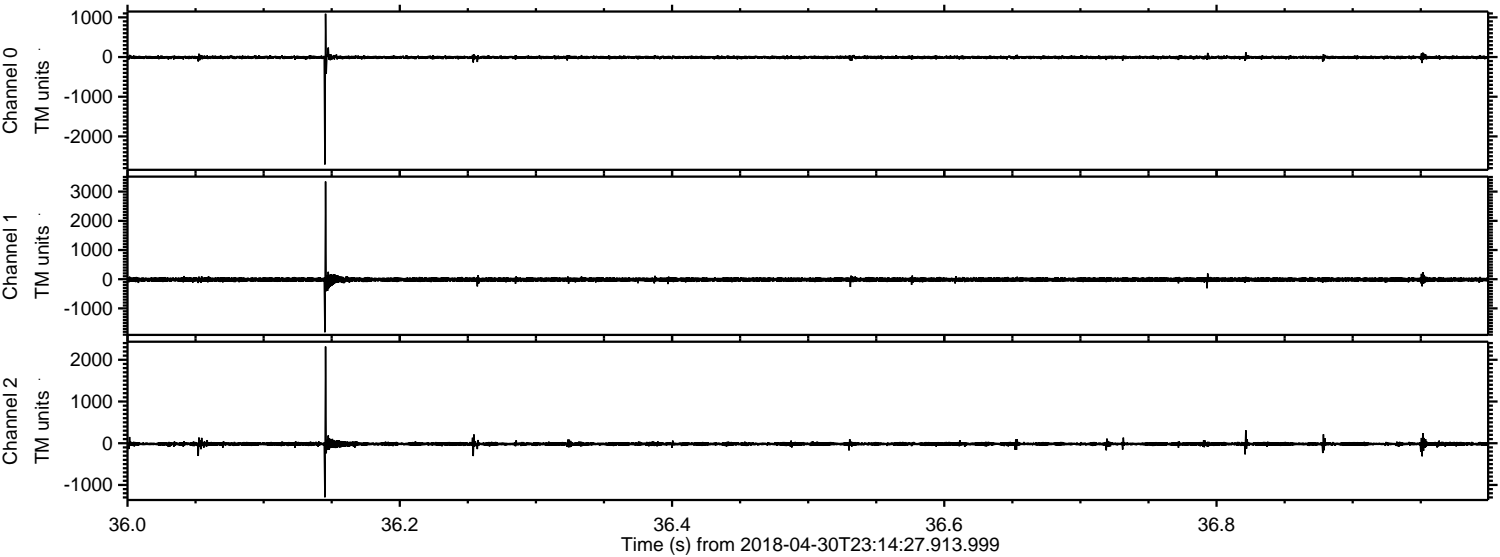


ELMAVAN 3D WAVEFORMS (Measured data sampled at 50 kHz) 51000 packets of 144 samples from 2018-04-30T23:14:27.913.999. Part 119/147

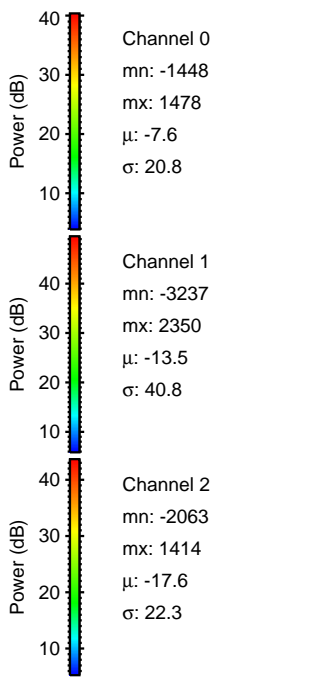
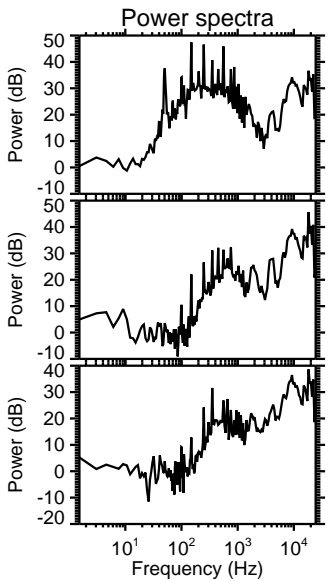
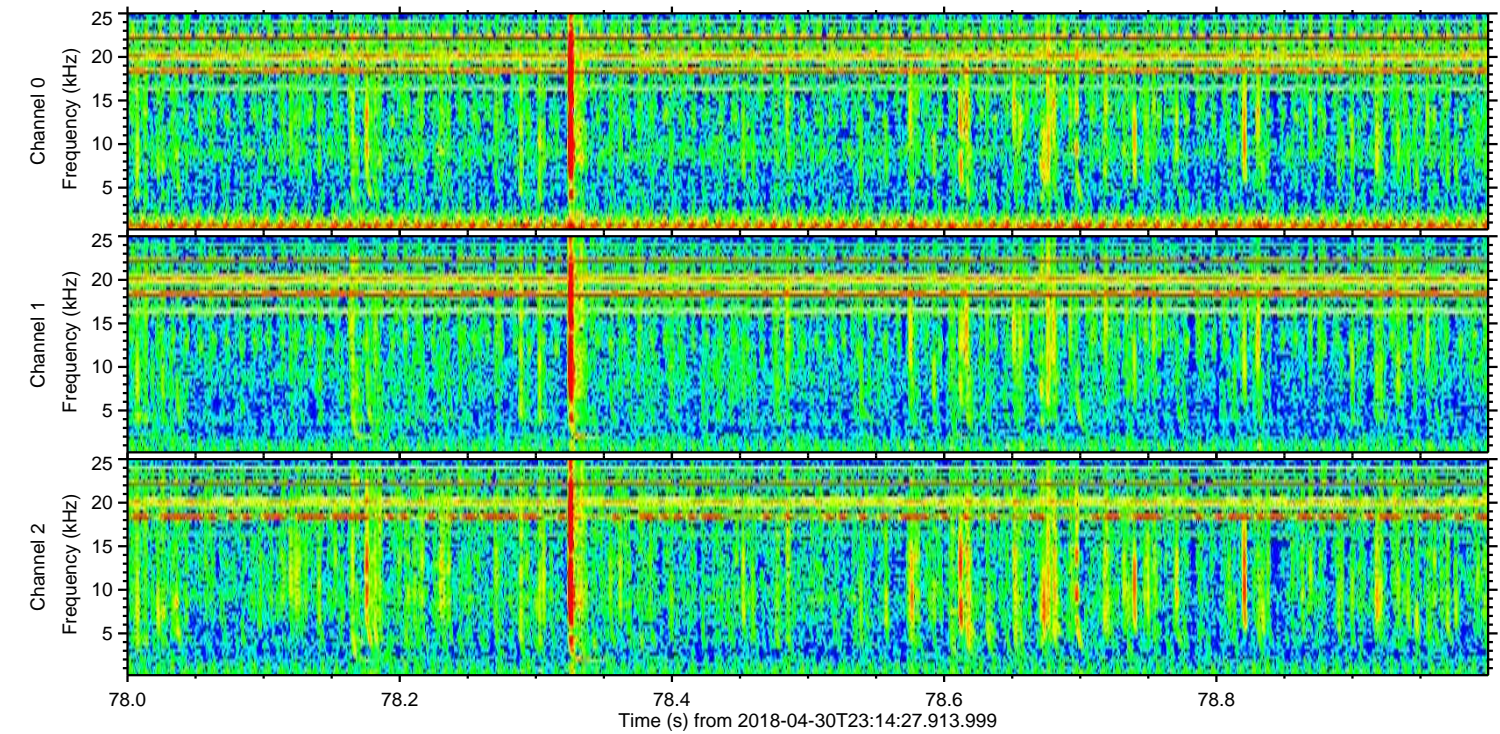
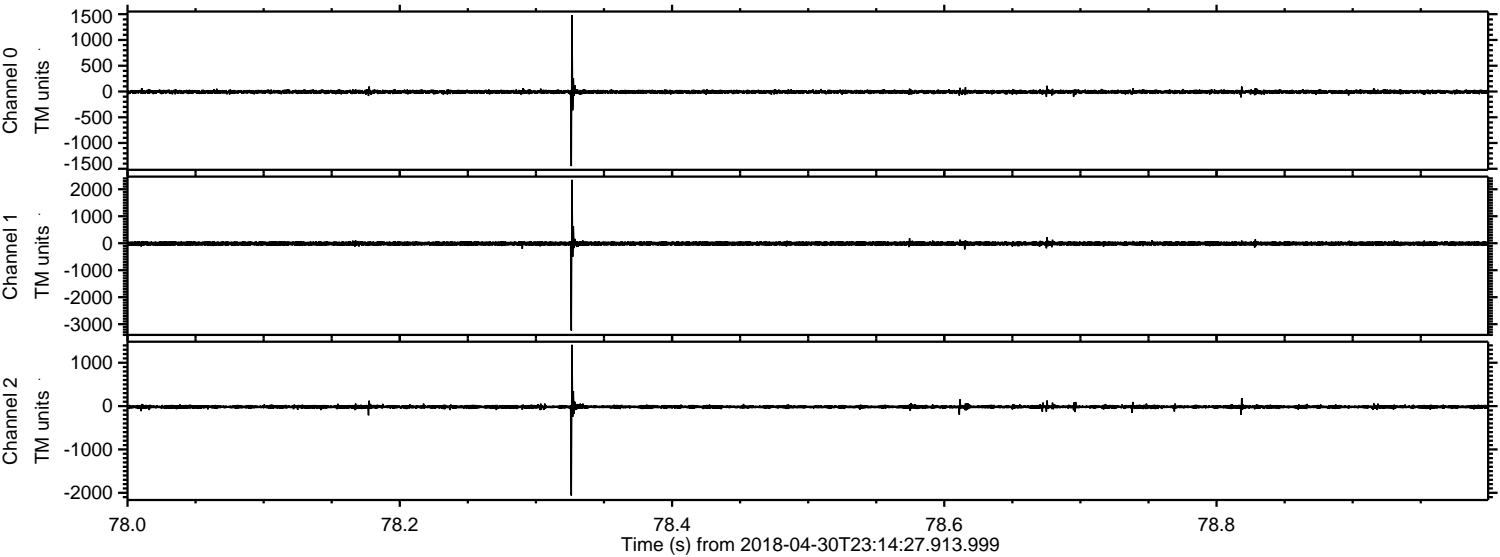
Processed Tue May 1 01:22:26 2018 by ELM ver.2012-10-06 from 001__elm20180430_231426__dat00.bin



Processed Tue May 1 01:22:27 2018 by ELM ver.2012-10-06 from 001__elm20180430_231426__dat00.bin

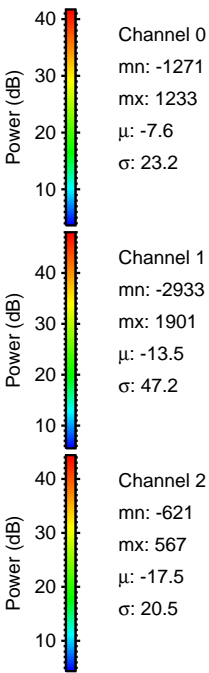
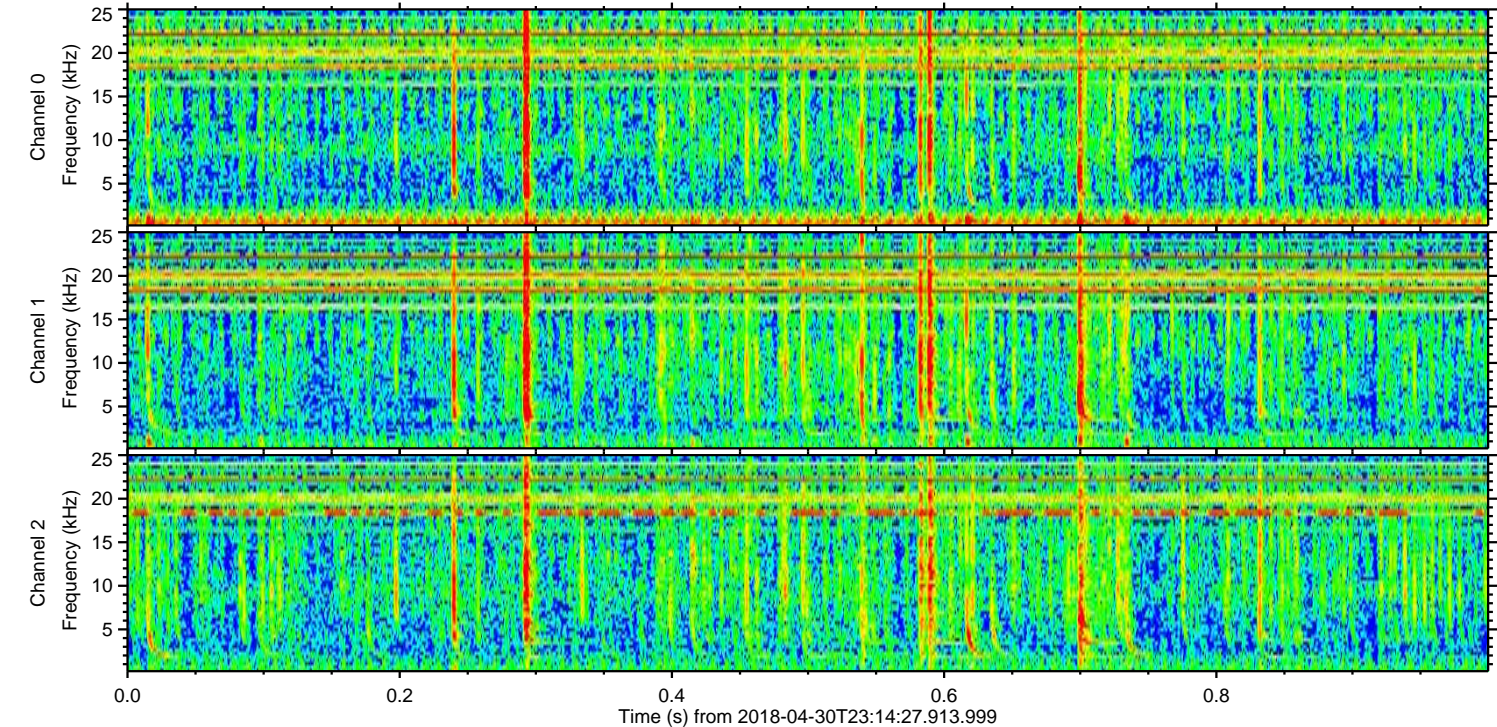
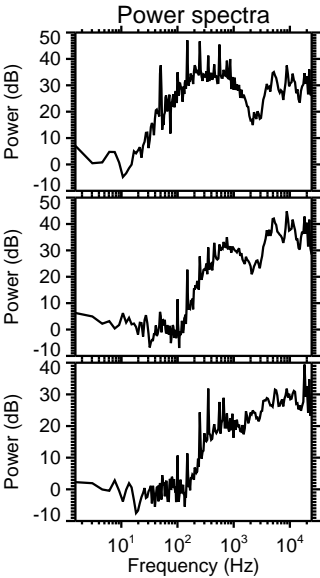
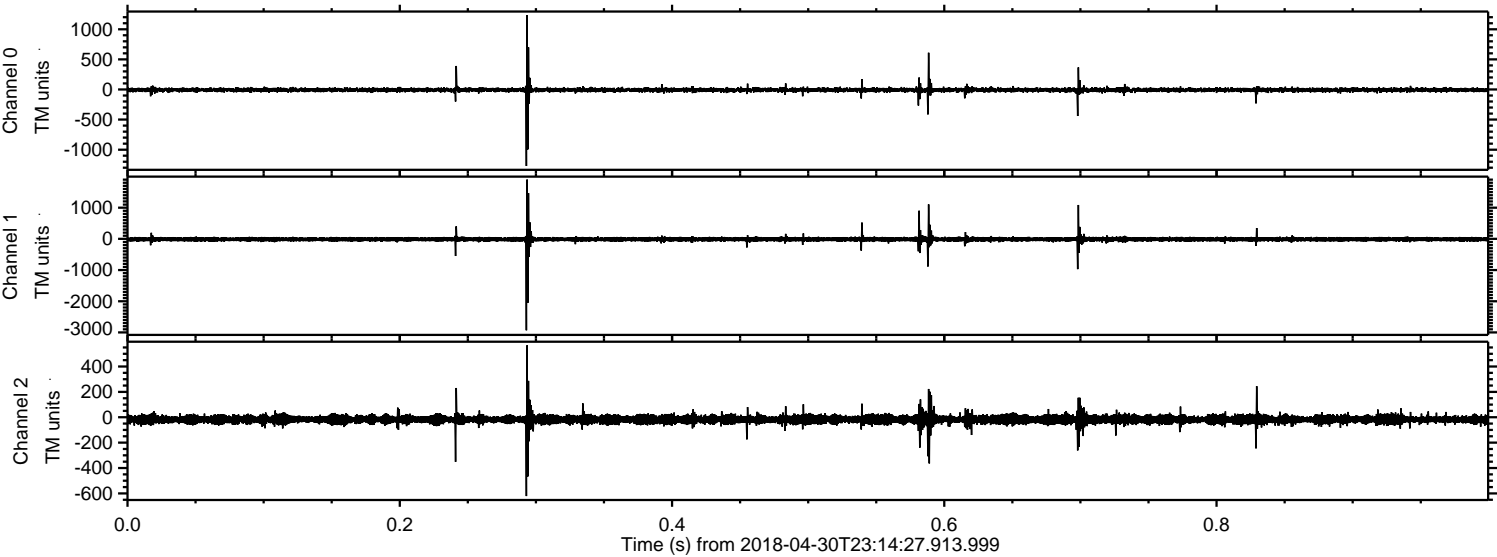


Processed Tue May 1 01:22:28 2018 by ELM ver.2012-10-06 from 001__elm20180430_231426__dat00.bin

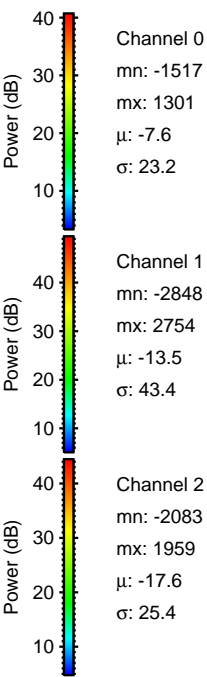
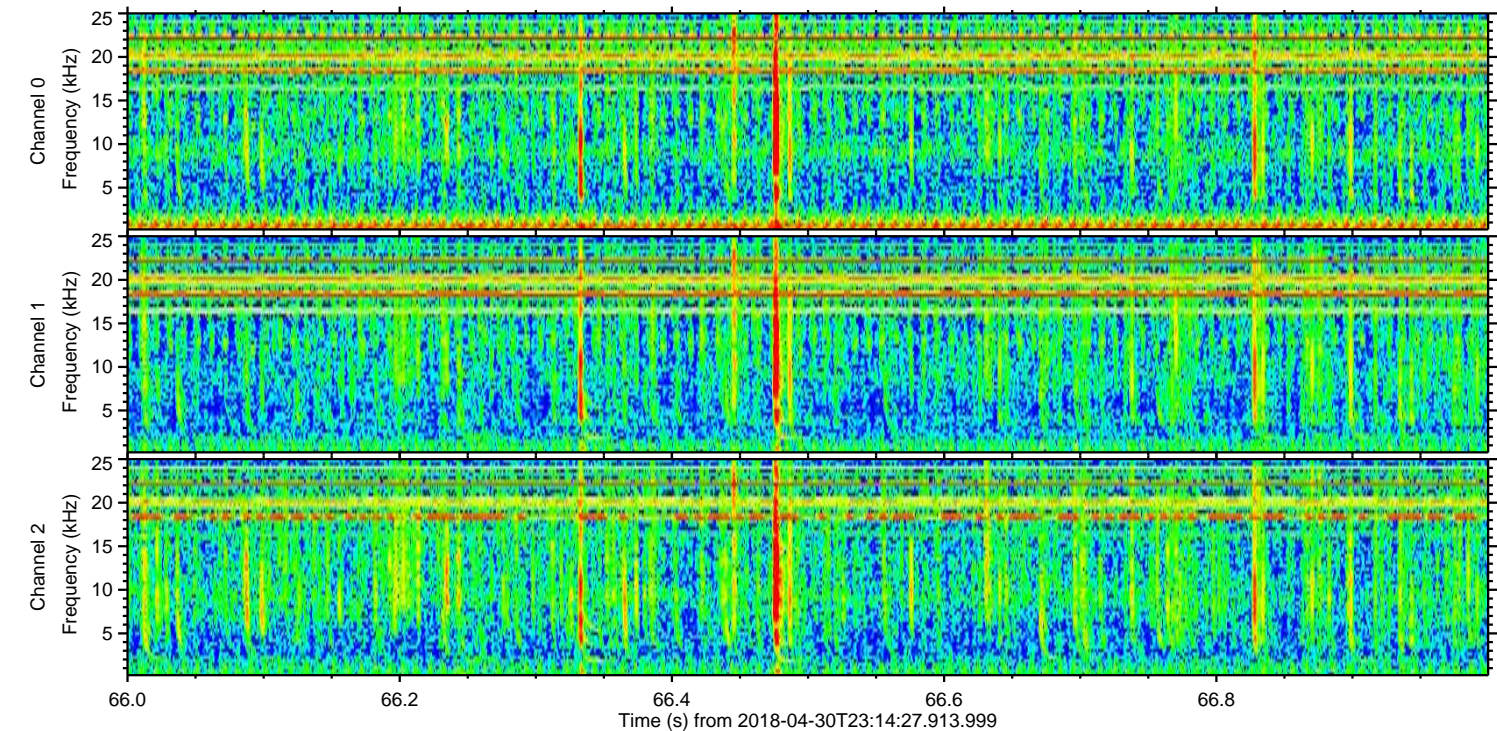
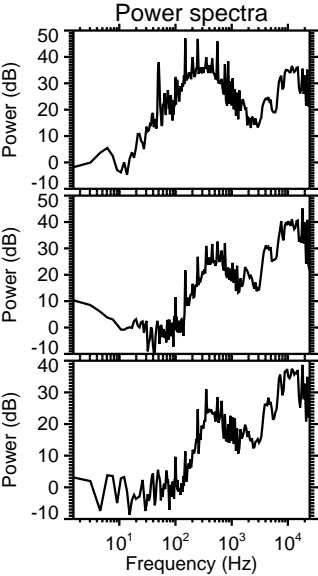
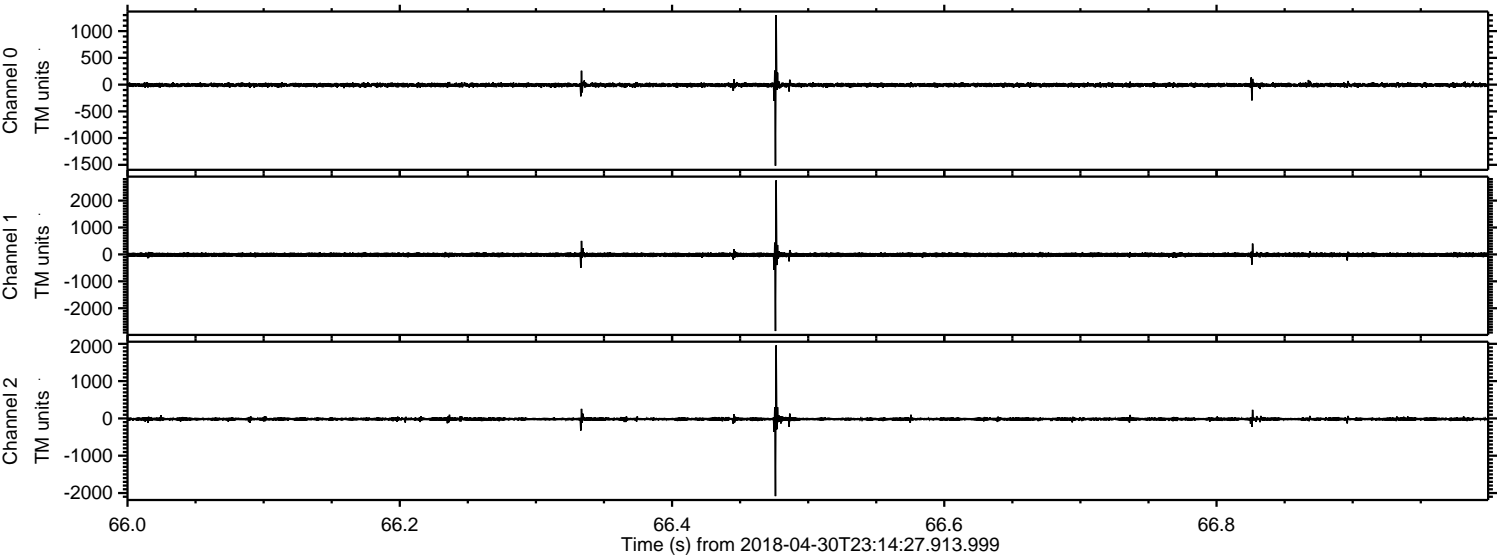


ELMAVAN 3D WAVEFORMS (Measured data sampled at 50 kHz) 51000 packets of 144 samples from 2018-04-30T23:14:27.913.999. Part 1/147

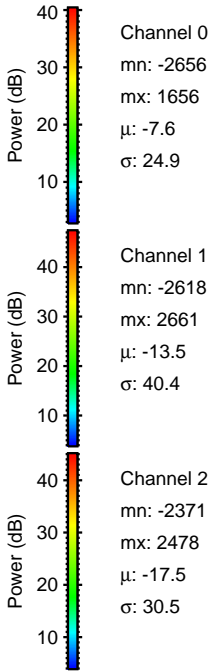
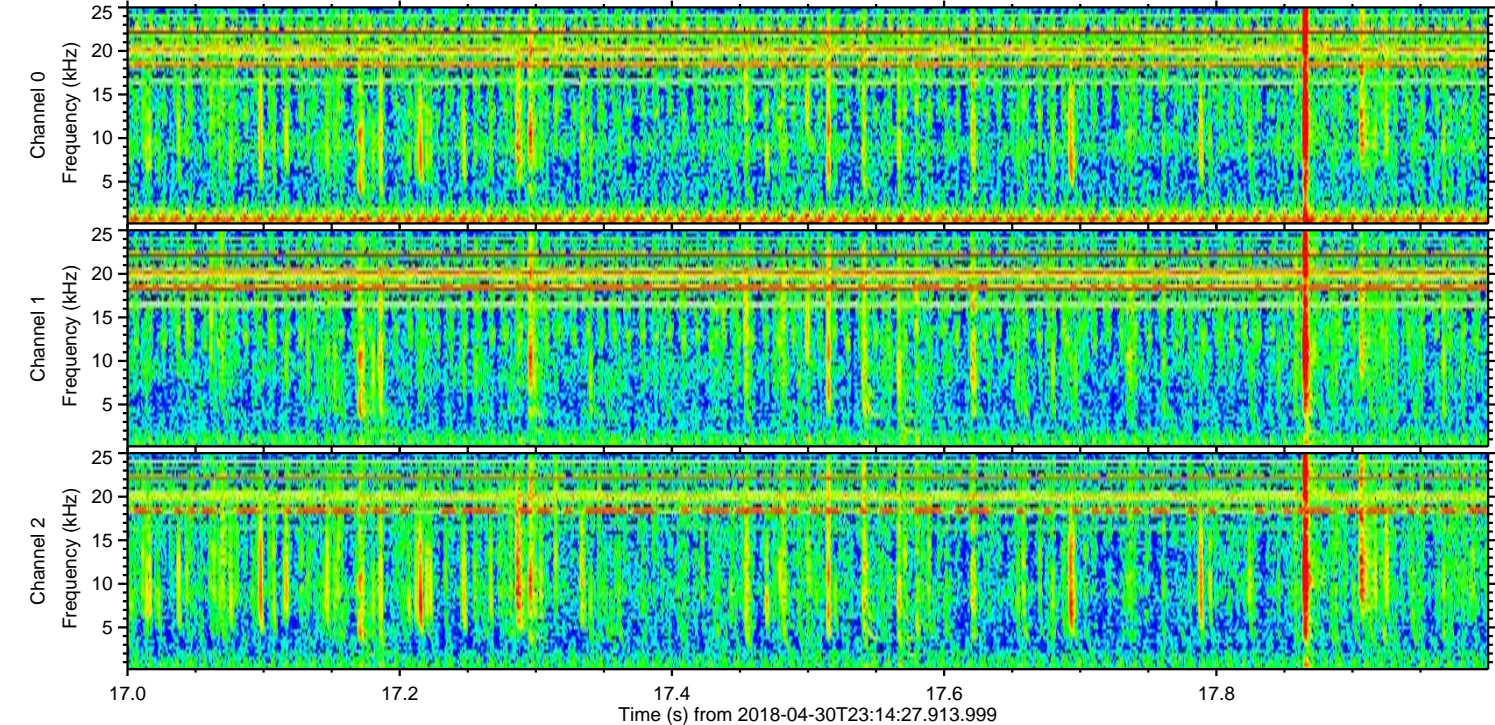
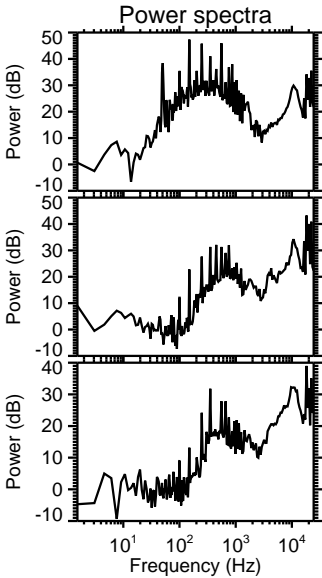
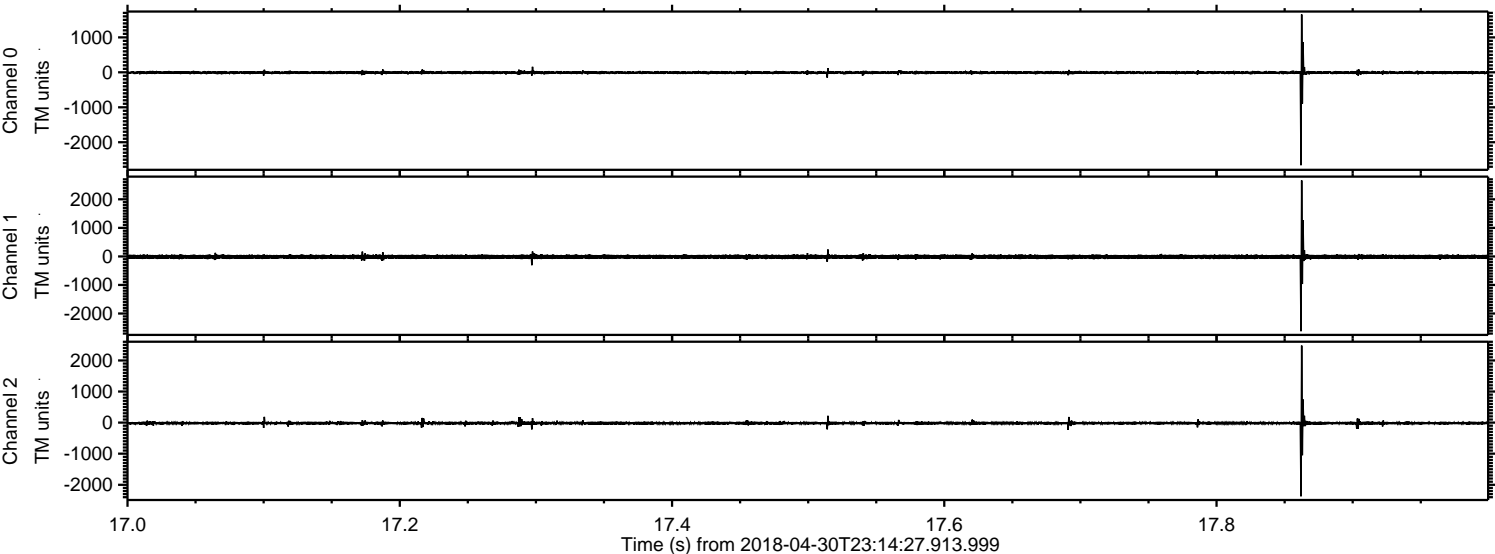
Processed Tue May 1 01:22:28 2018 by ELM ver.2012-10-06 from 001__elm20180430_231426__dat00.bin



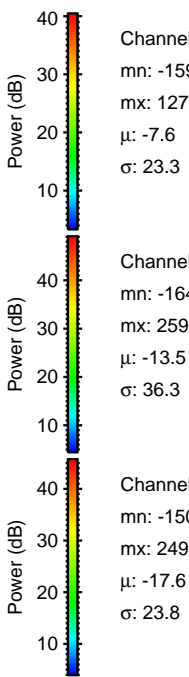
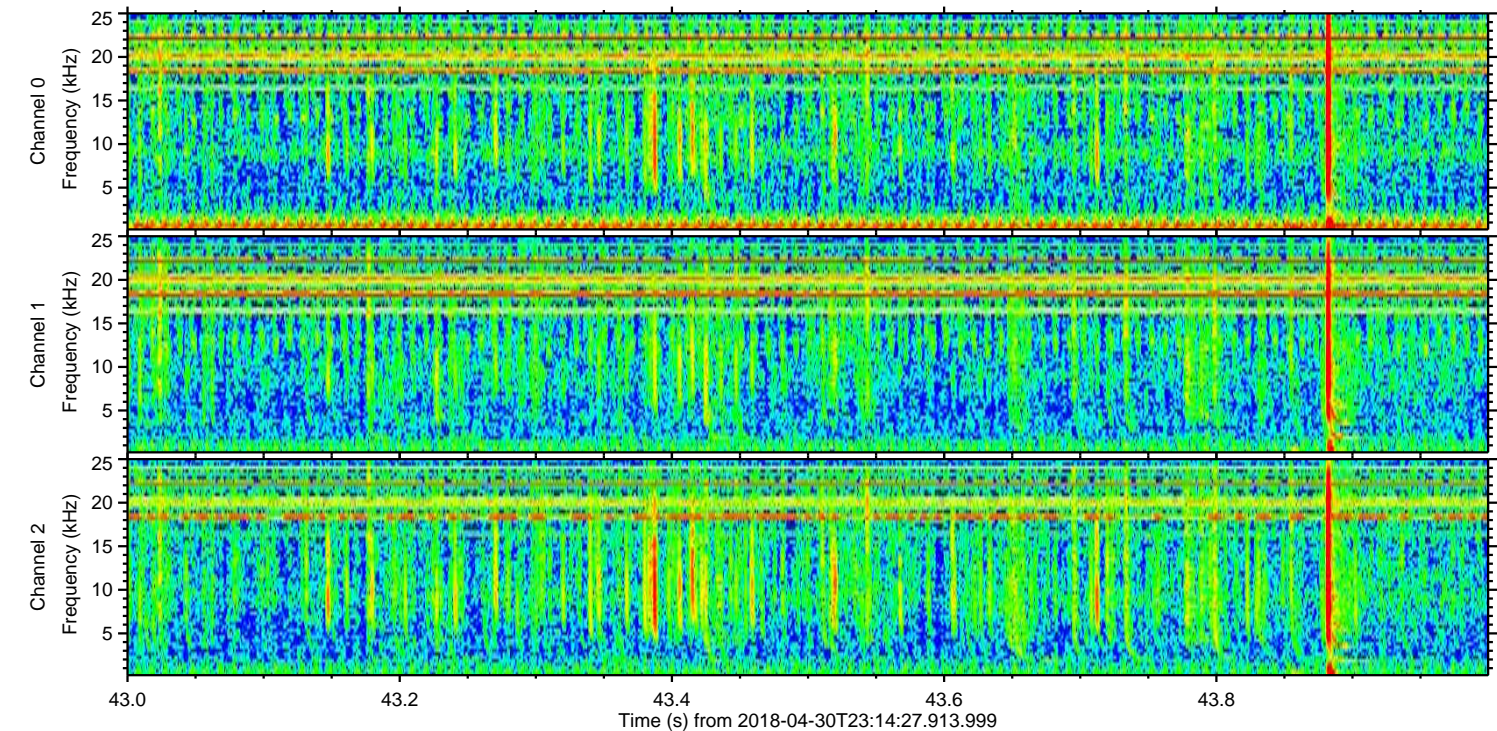
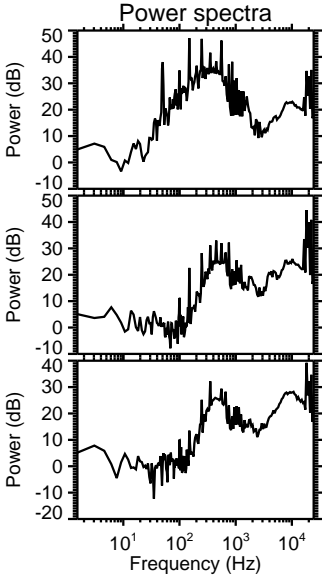
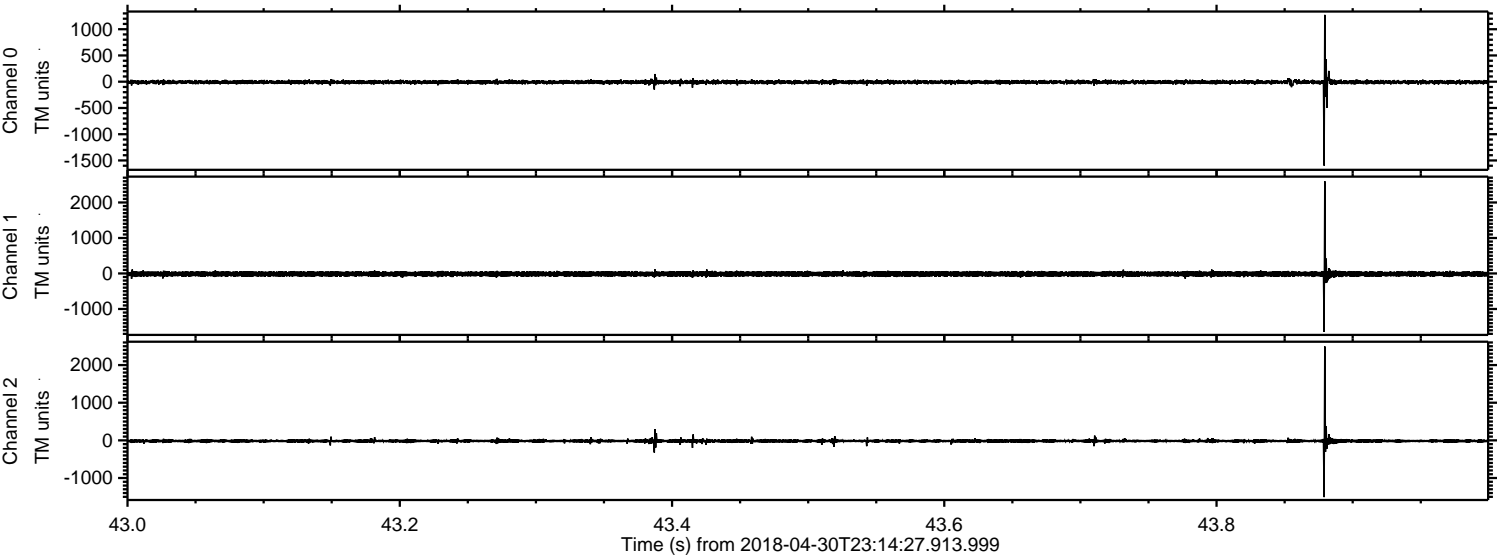
Processed Tue May 1 01:22:29 2018 by ELM ver.2012-10-06 from 001__elm20180430_231426__dat00.bin



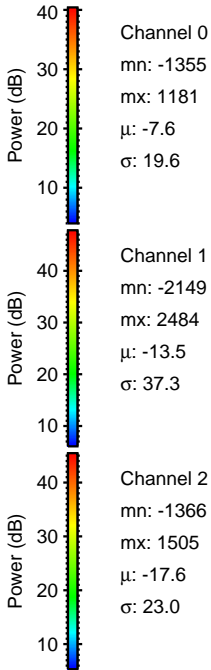
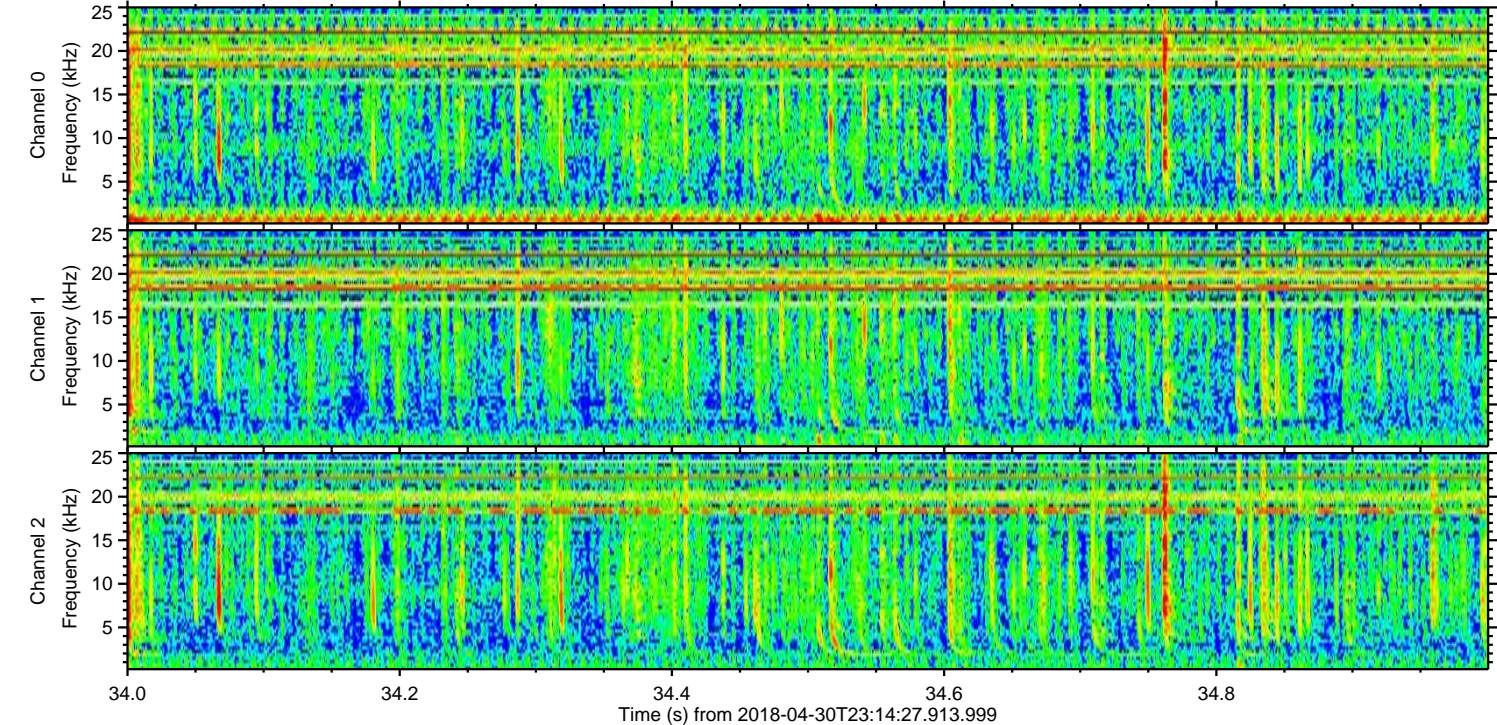
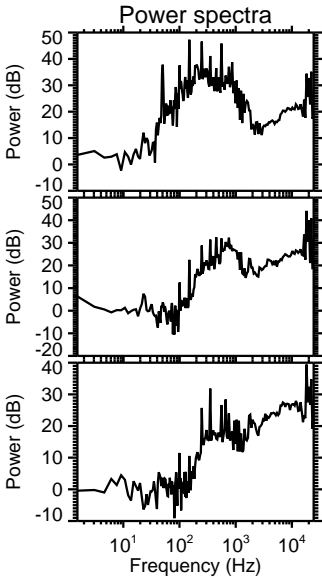
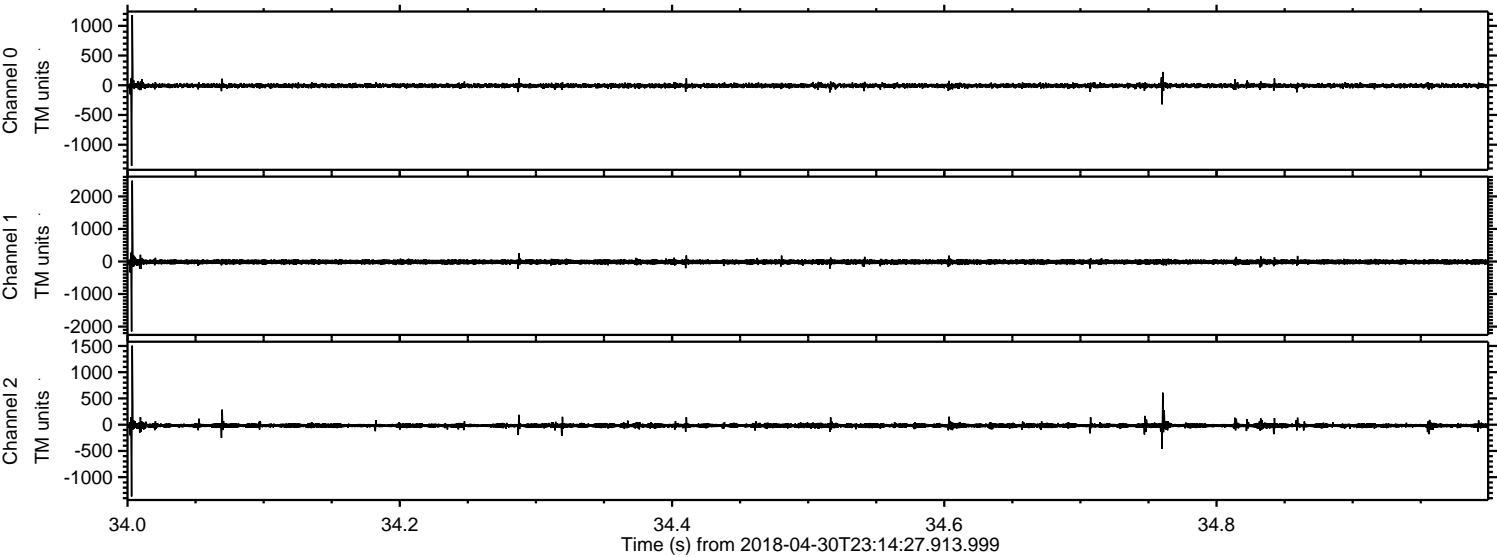
Processed Tue May 1 01:22:30 2018 by ELM ver.2012-10-06 from 001__elm20180430_231426__dat00.bin



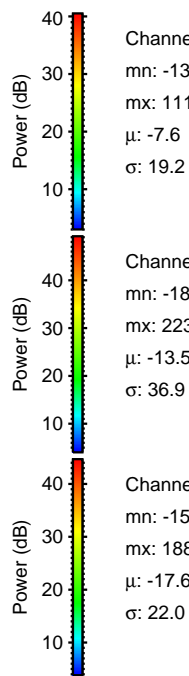
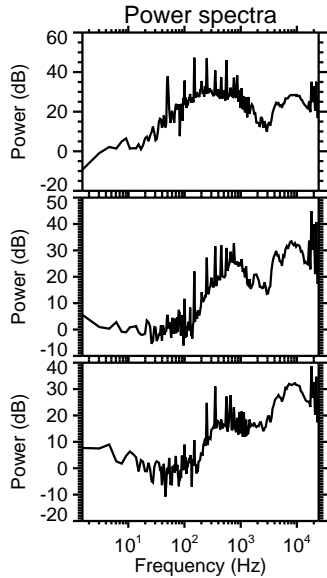
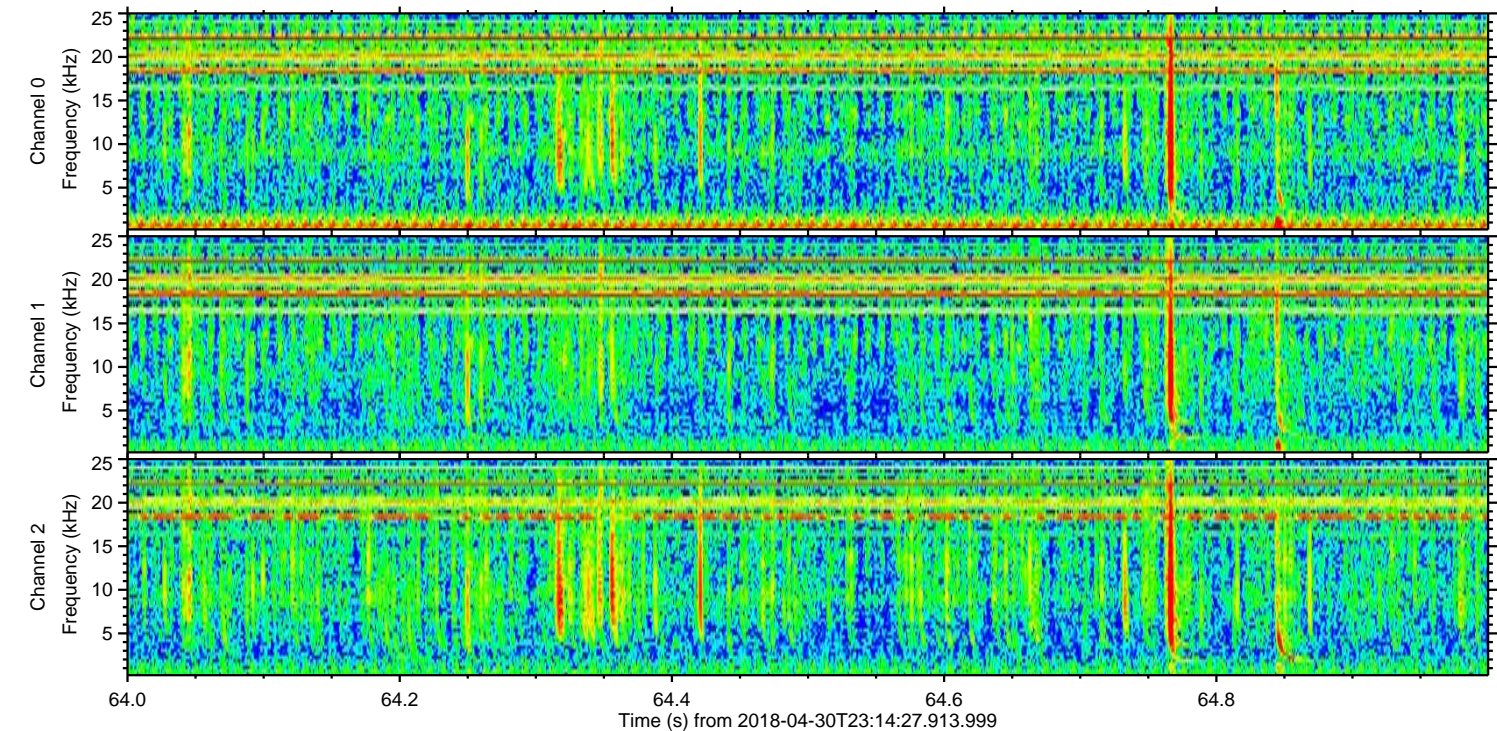
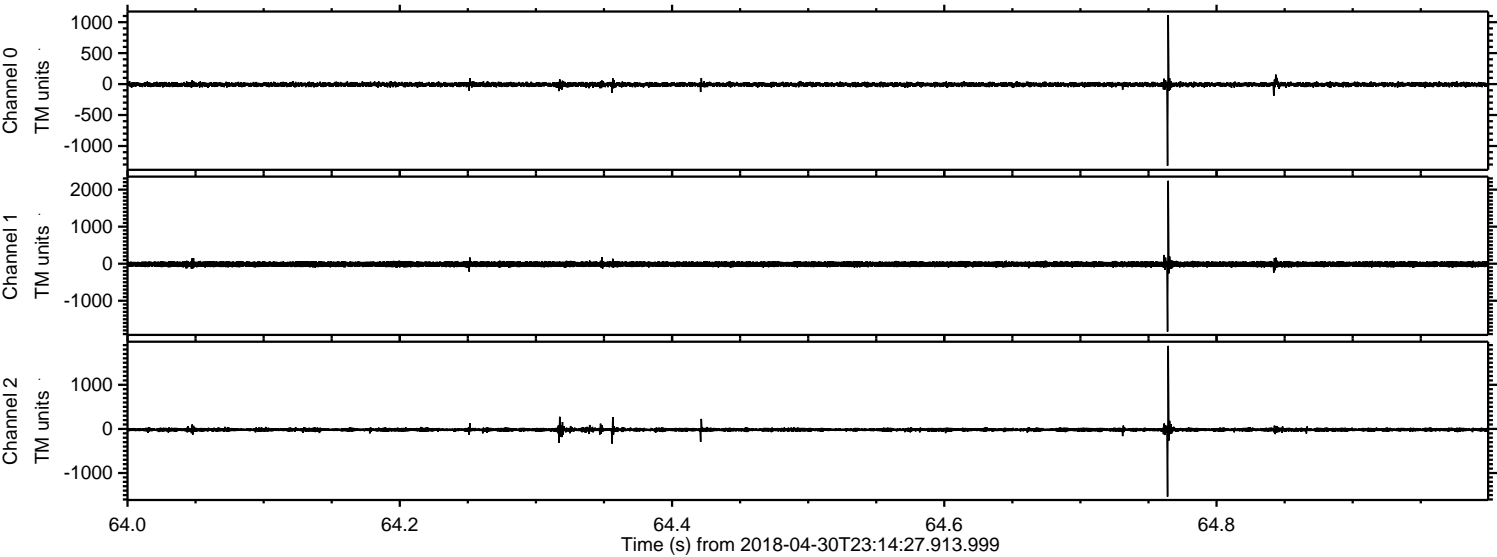
Processed Tue May 1 01:22:30 2018 by ELM ver.2012-10-06 from 001__elm20180430_231426__dat00.bin



Processed Tue May 1 01:22:31 2018 by ELM ver.2012-10-06 from 001__elm20180430_231426__dat00.bin



Processed Tue May 1 01:22:31 2018 by ELM ver.2012-10-06 from 001__elm20180430_231426__dat00.bin



Channel 0
mn: -1319
mx: 1116
 μ : -7.6
 σ : 19.2

Channel 1
mn: -1830
mx: 2238
 μ : -13.5
 σ : 36.9

Channel 2
mn: -1535
mx: 1883
 μ : -17.6
 σ : 22.0

Processed Tue May 1 01:22:32 2018 by ELM ver.2012-10-06 from 001__elm20180430_231426__dat00.bin

