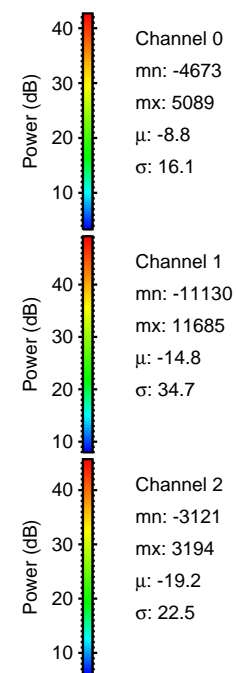
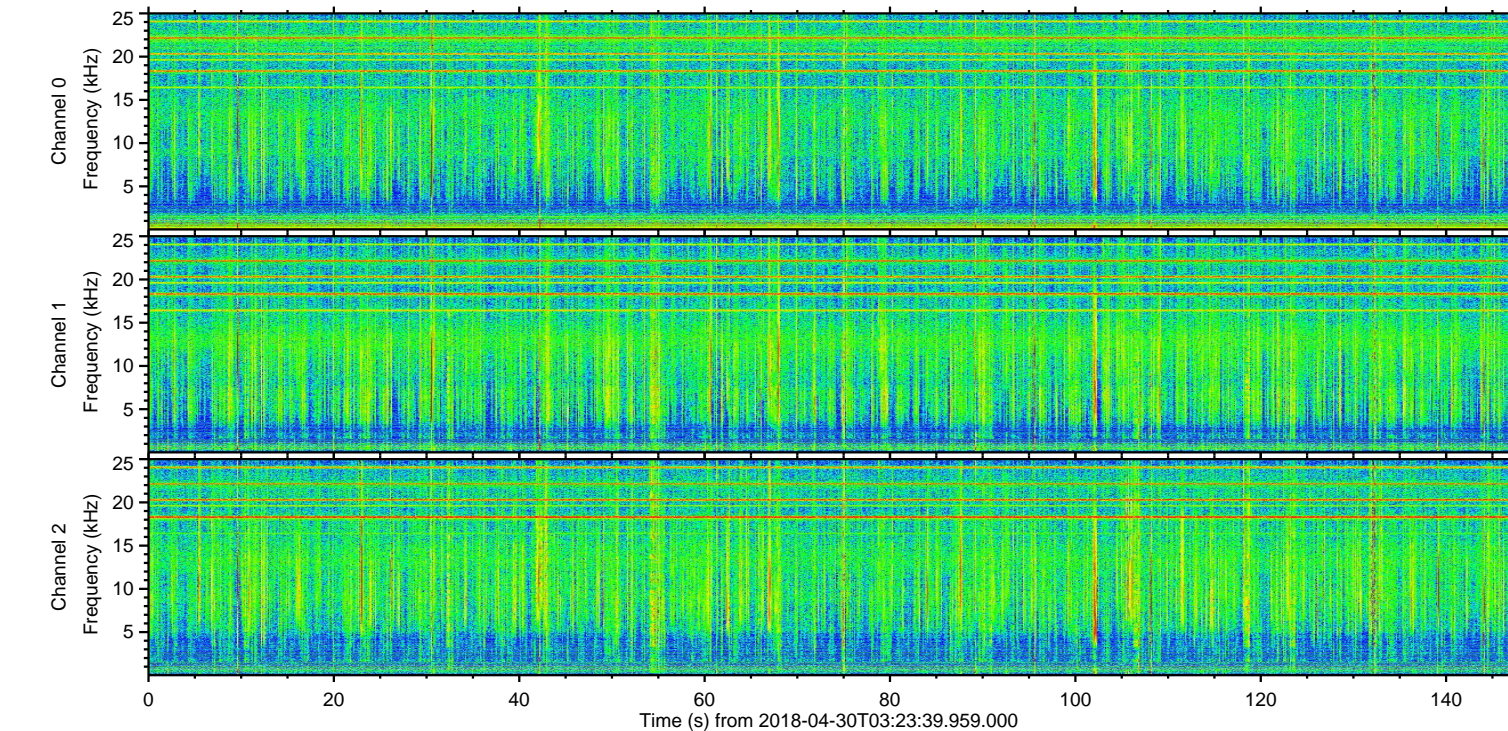
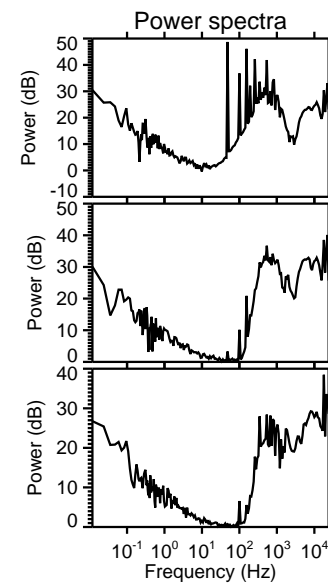
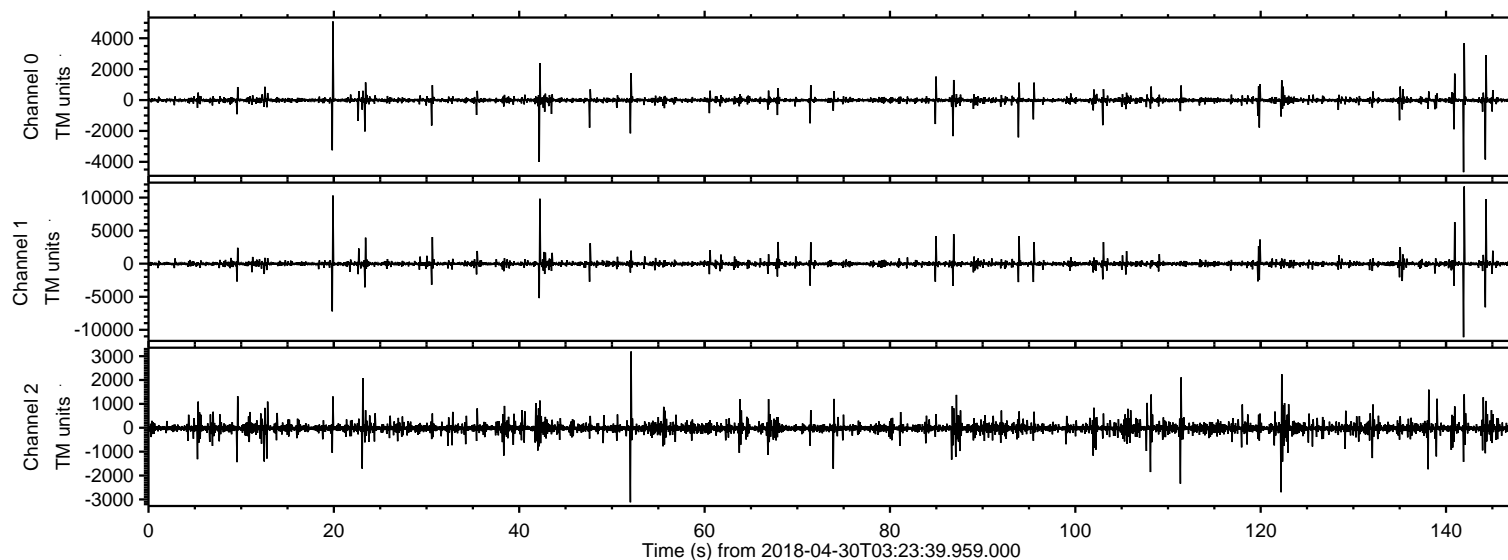


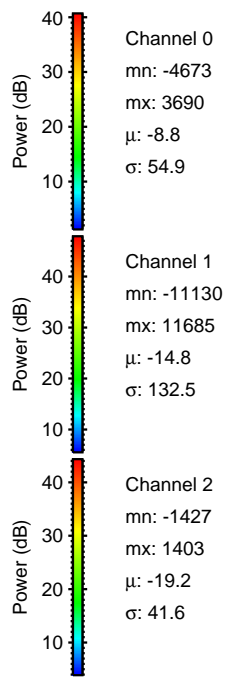
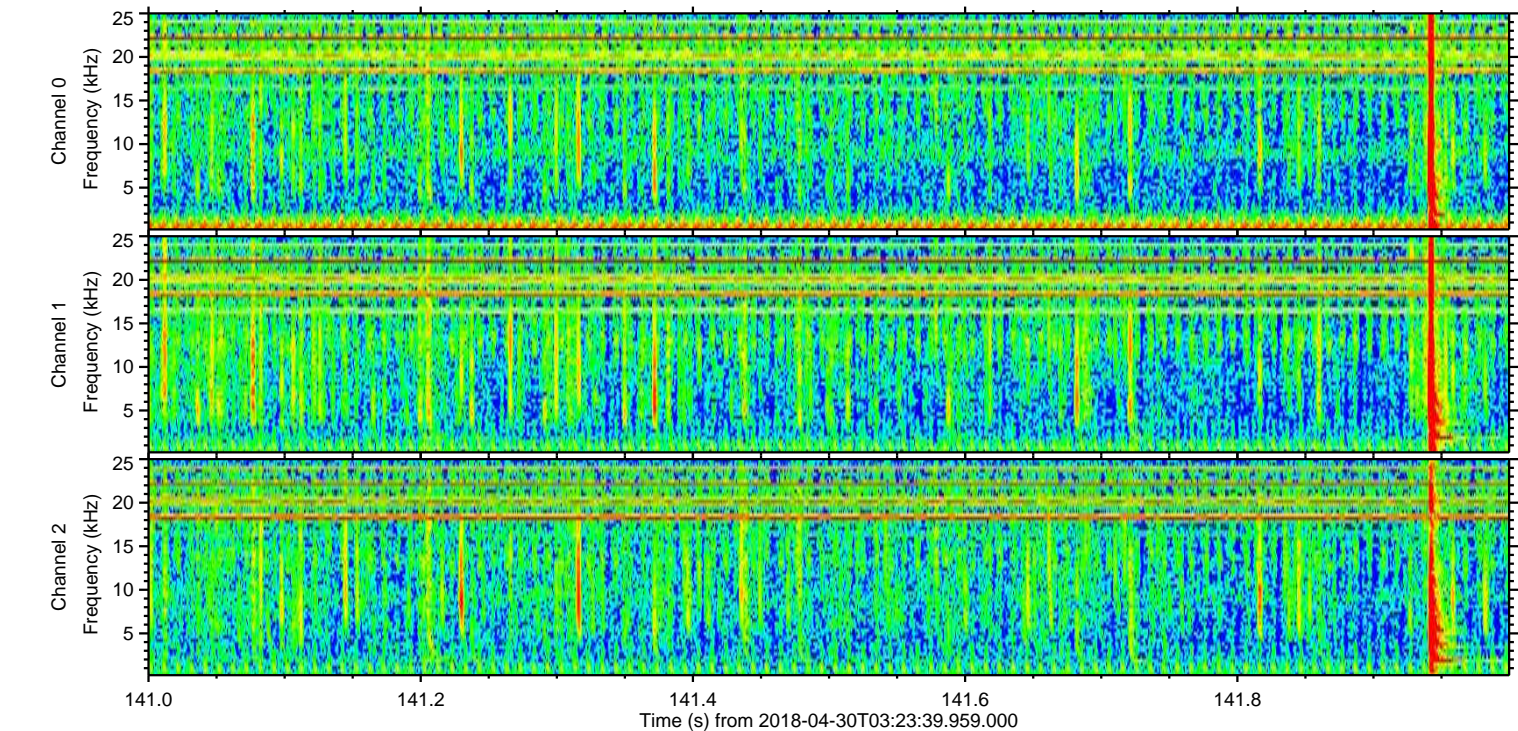
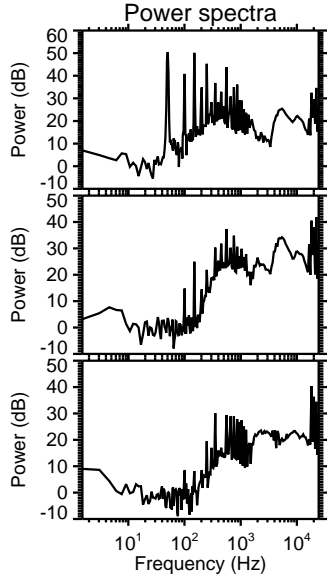
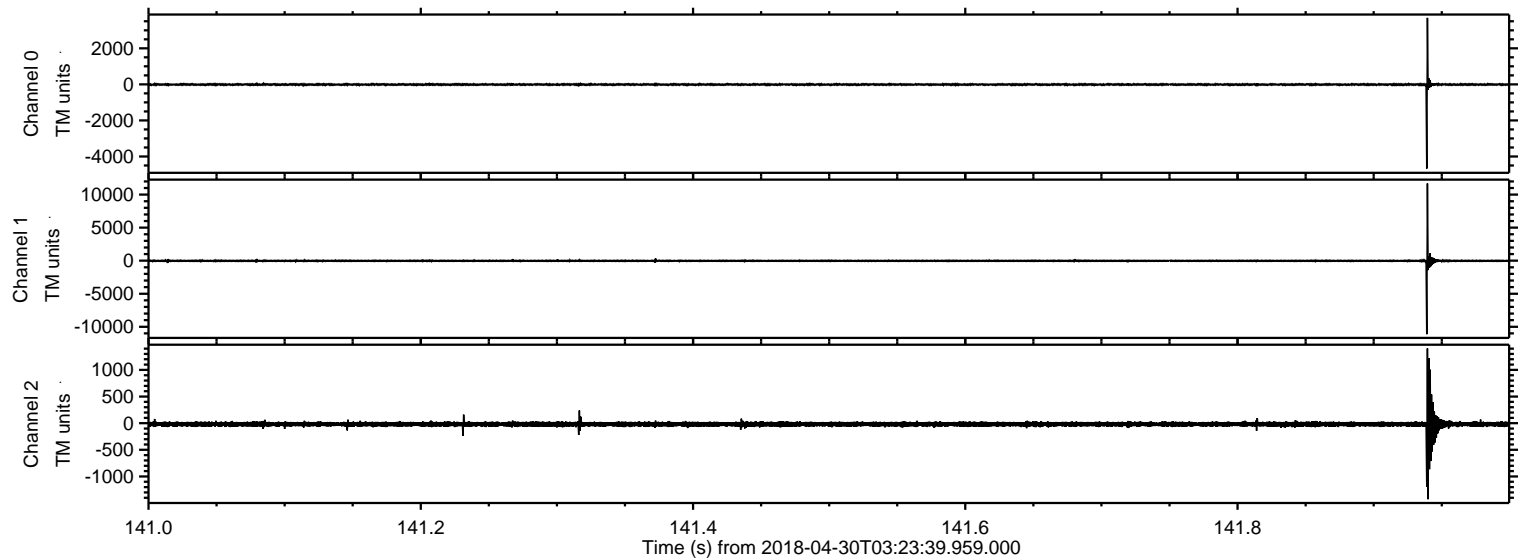
ELMAVAN 3D WAVEFORMS (Measured data sampled at 50 kHz) 51000 packets of 144 samples from 2018-04-30T03:23:39.959.000.

Processed Mon Apr 30 05:32:21 2018 by ELM ver.2012-10-06 from 001__elm20180430_032338__dat00.bin

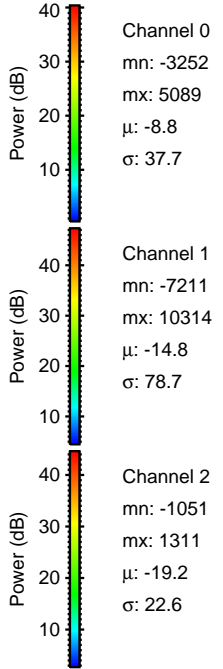
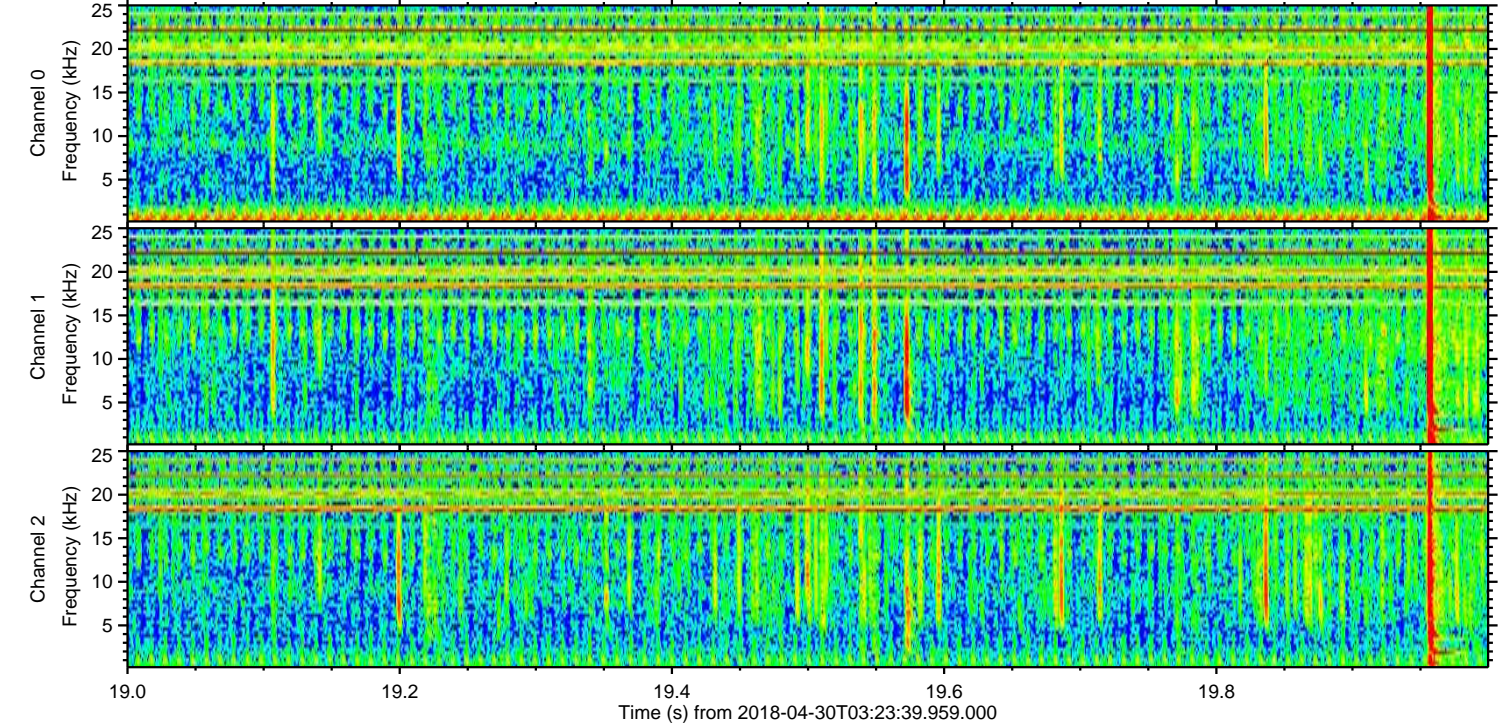
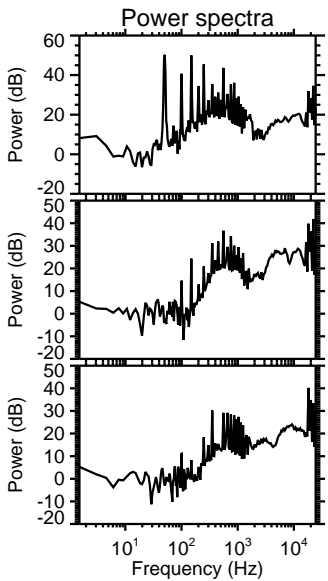
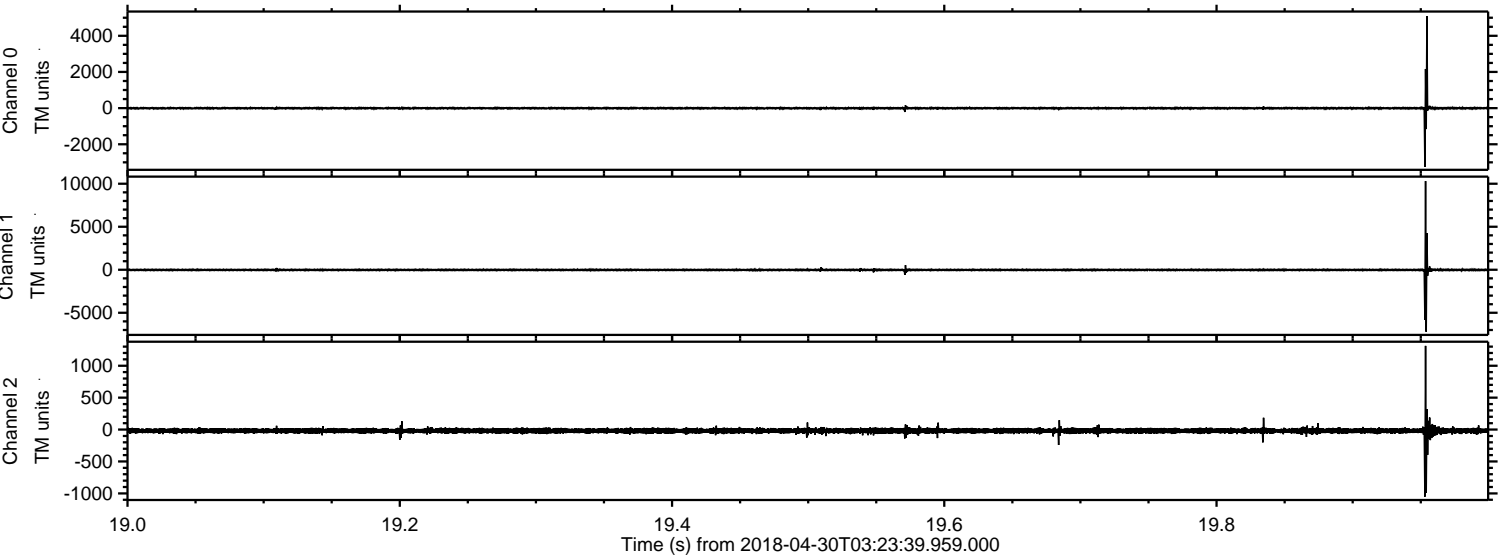


ELMAVAN 3D WAVEFORMS (Measured data sampled at 50 kHz) 51000 packets of 144 samples from 2018-04-30T03:23:39.959.000. Part 142/147

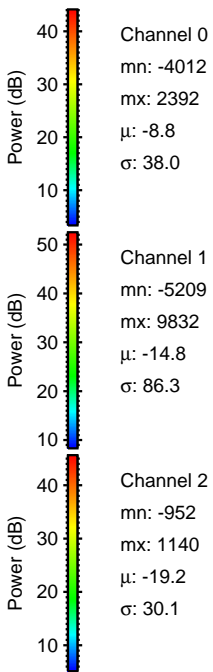
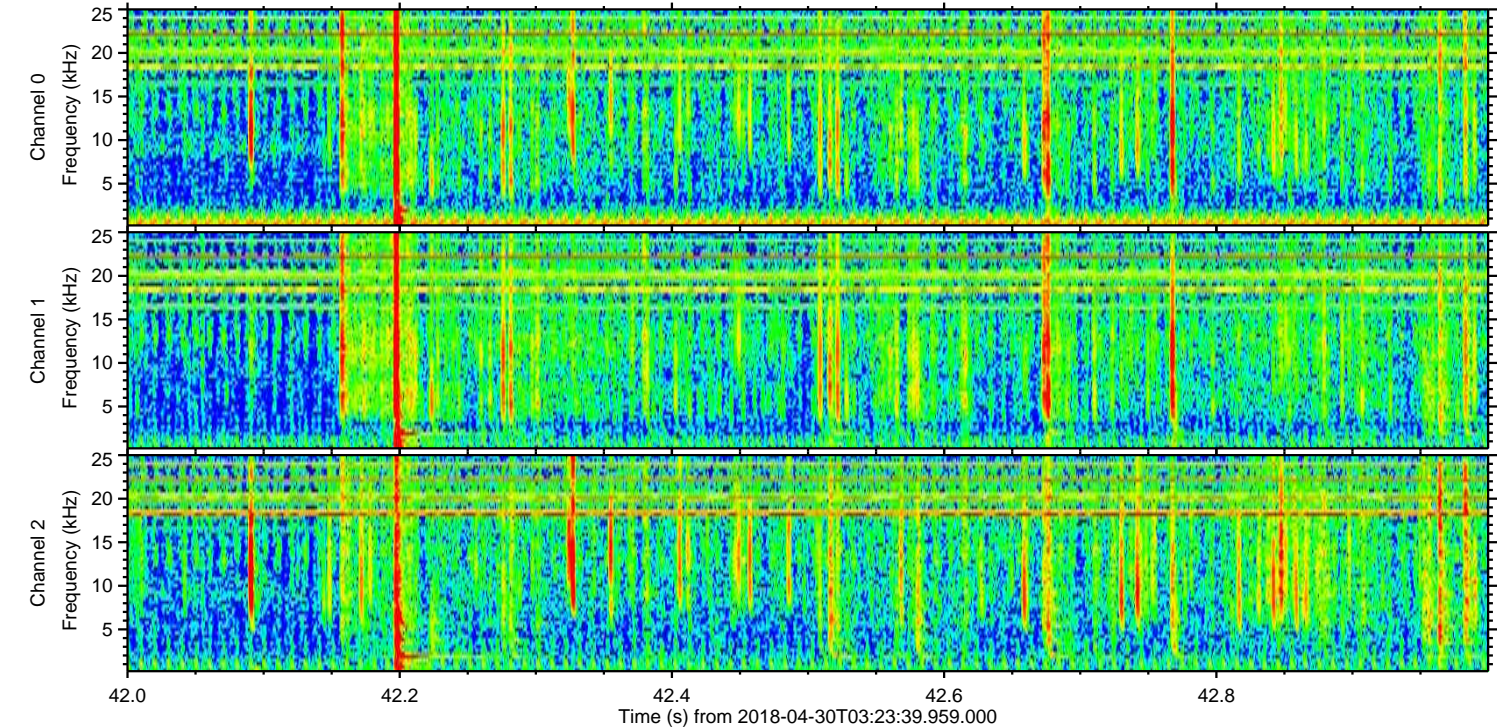
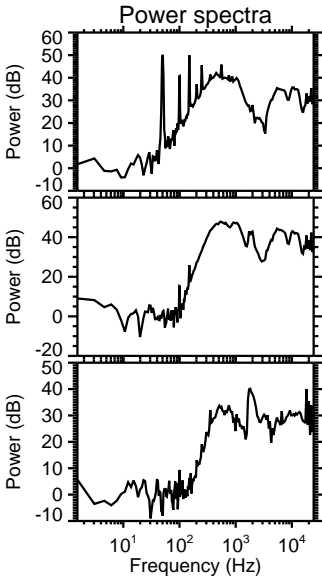
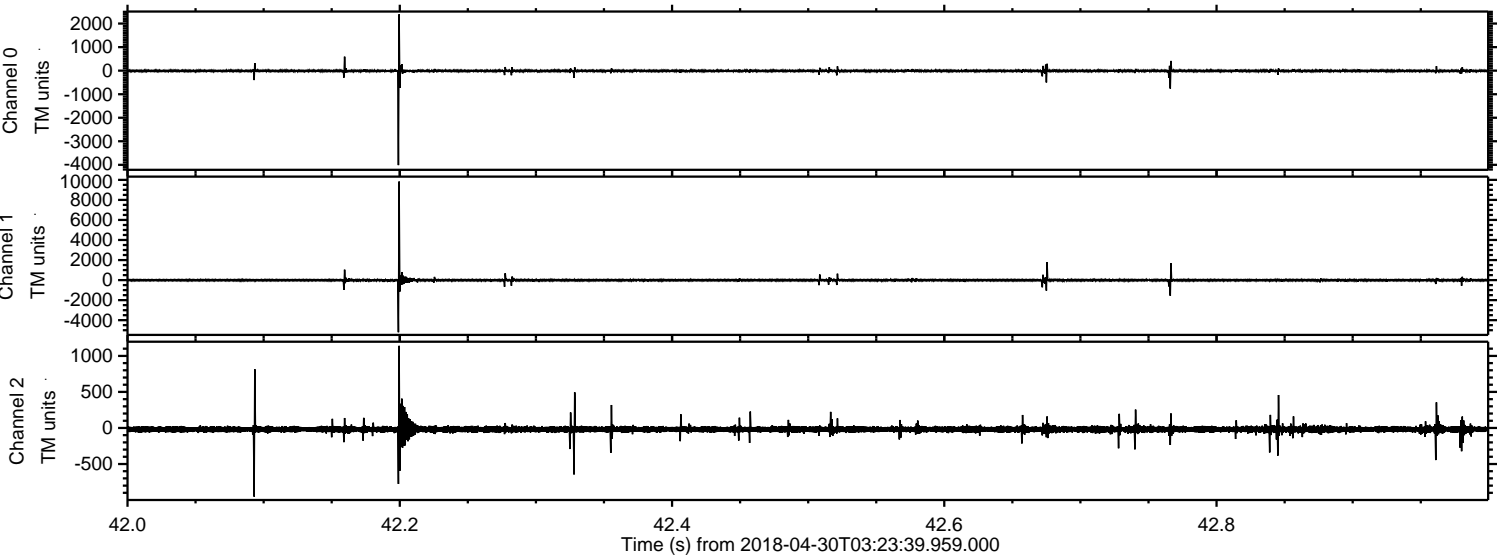
Processed Mon Apr 30 05:32:26 2018 by ELM ver.2012-10-06 from 001__elm20180430_032338__dat00.bin



Processed Mon Apr 30 05:32:27 2018 by ELM ver.2012-10-06 from 001__elm20180430_032338__dat00.bin

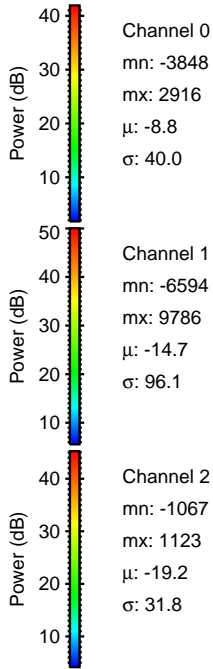
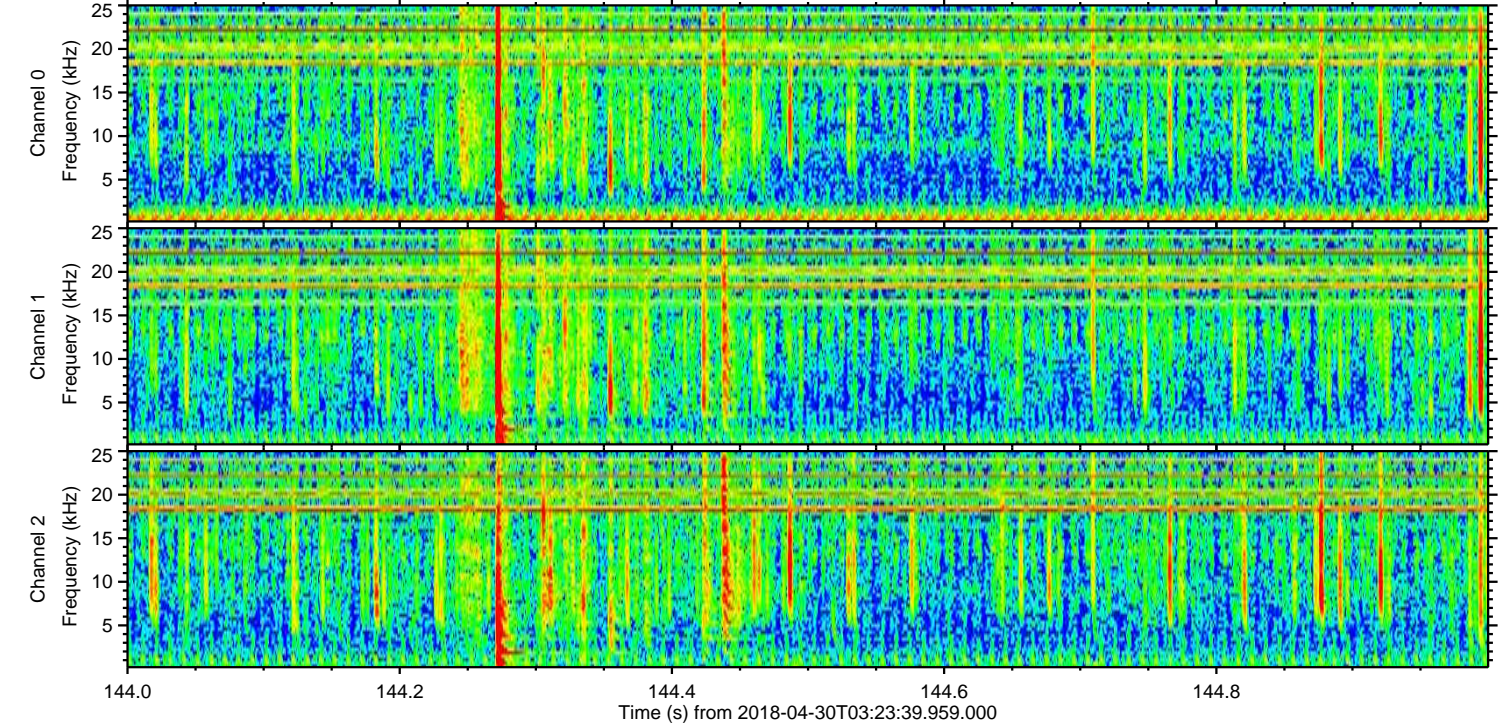
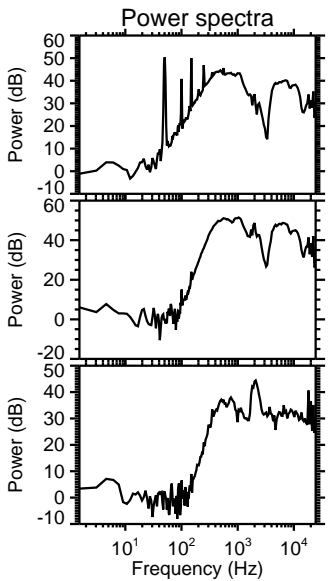
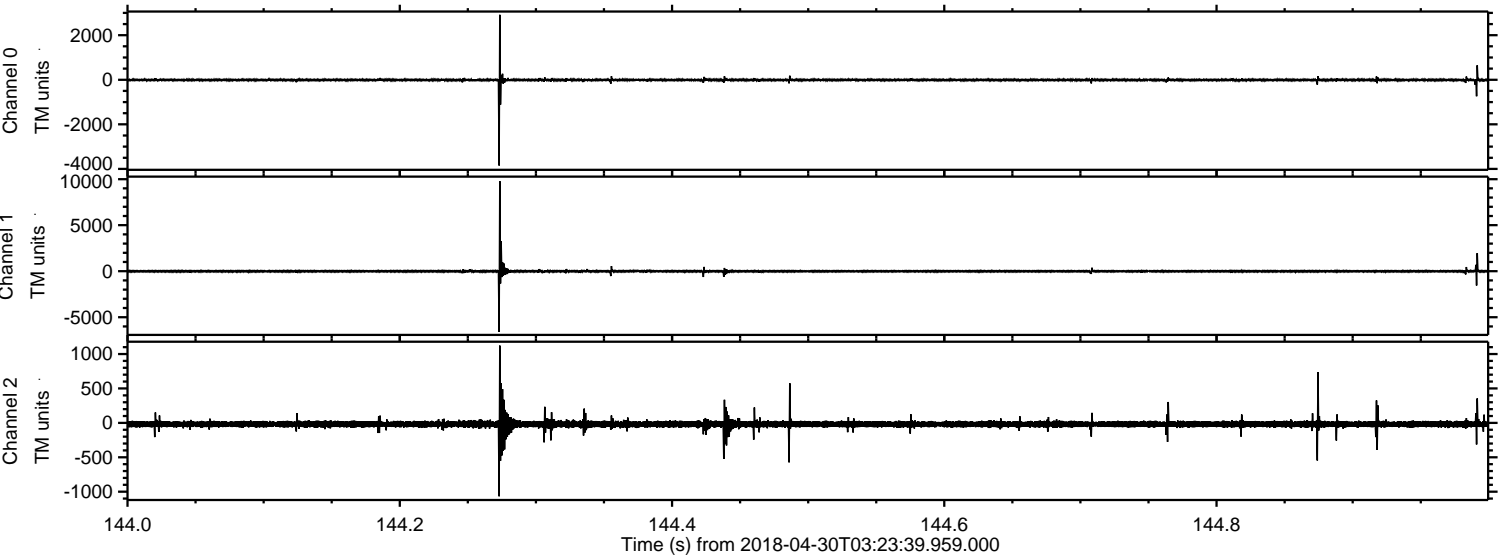


Processed Mon Apr 30 05:32:28 2018 by ELM ver.2012-10-06 from 001__elm20180430_032338__dat00.bin



ELMAVAN 3D WAVEFORMS (Measured data sampled at 50 kHz) 51000 packets of 144 samples from 2018-04-30T03:23:39.959.000. Part 145/147

Processed Mon Apr 30 05:32:29 2018 by ELM ver.2012-10-06 from 001__elm20180430_032338__dat00.bin



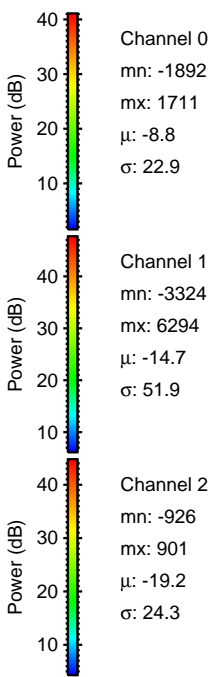
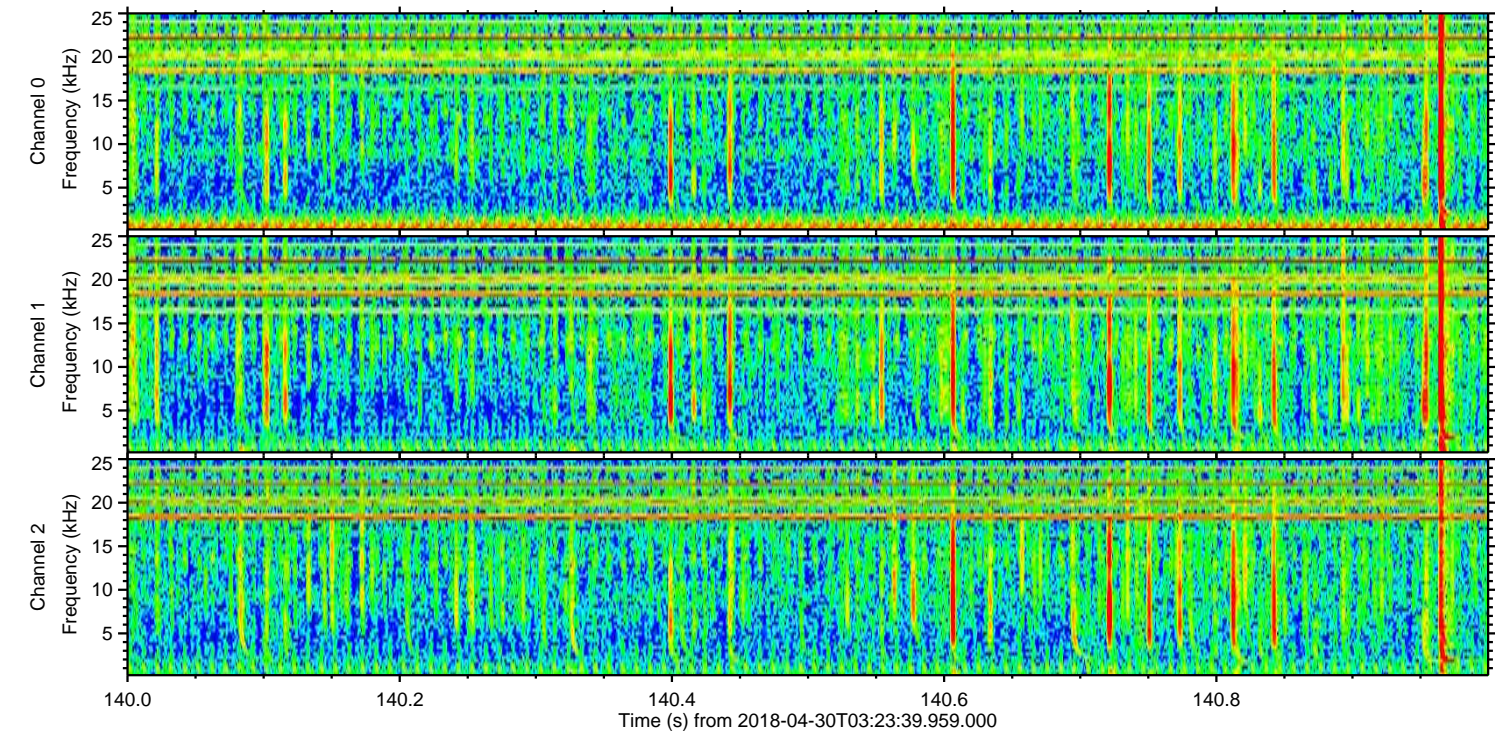
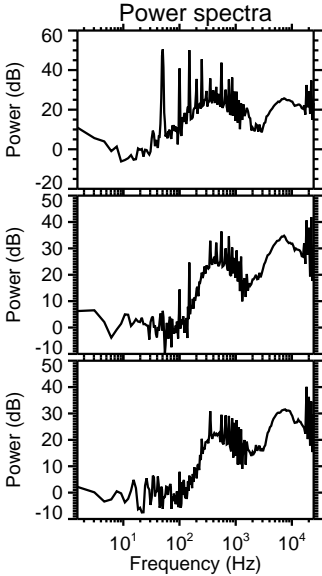
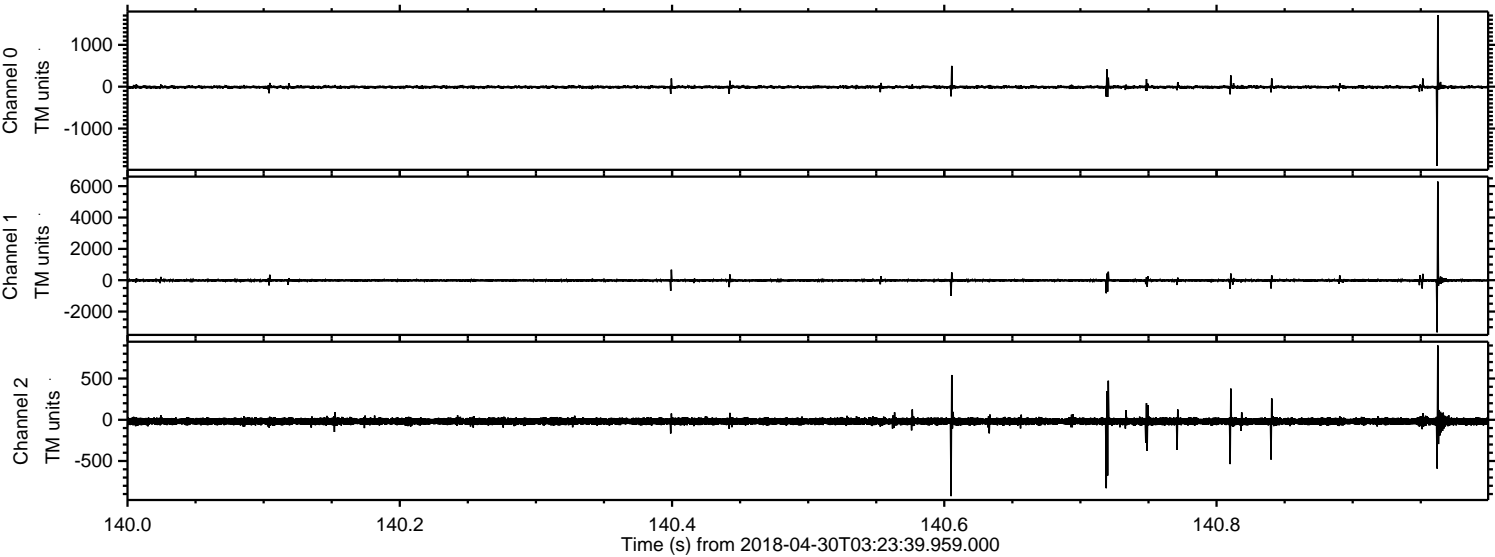
Channel 0
mn: -3848
mx: 2916
 μ : -8.8
 σ : 40.0

Channel 1
mn: -6594
mx: 9786
 μ : -14.7
 σ : 96.1

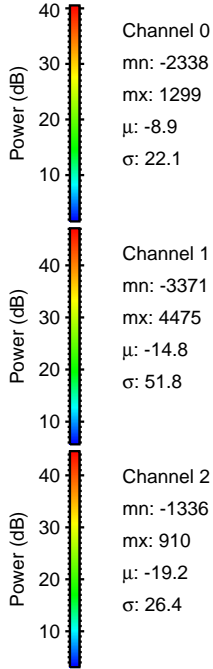
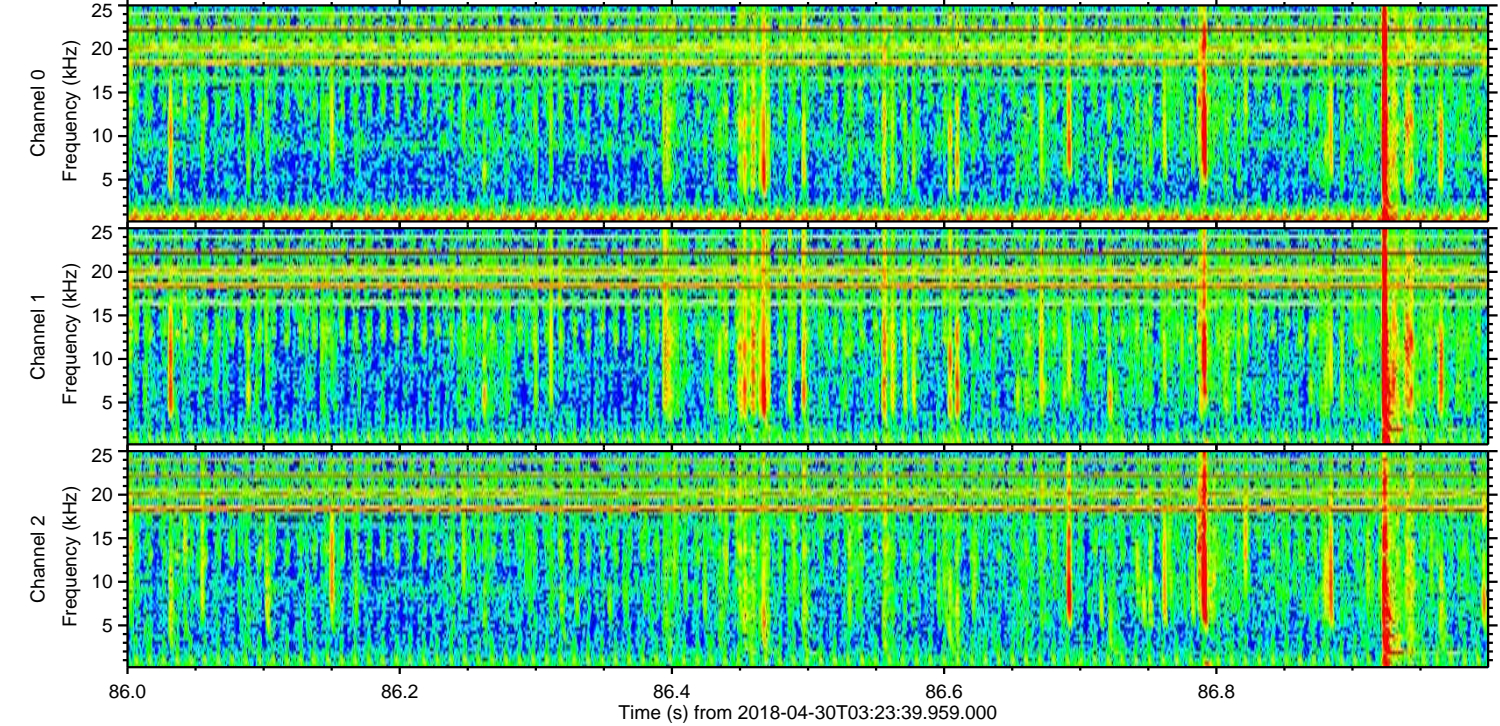
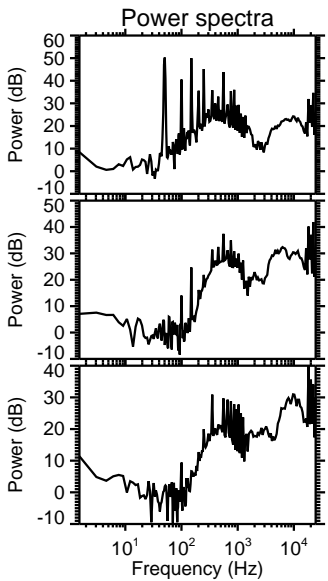
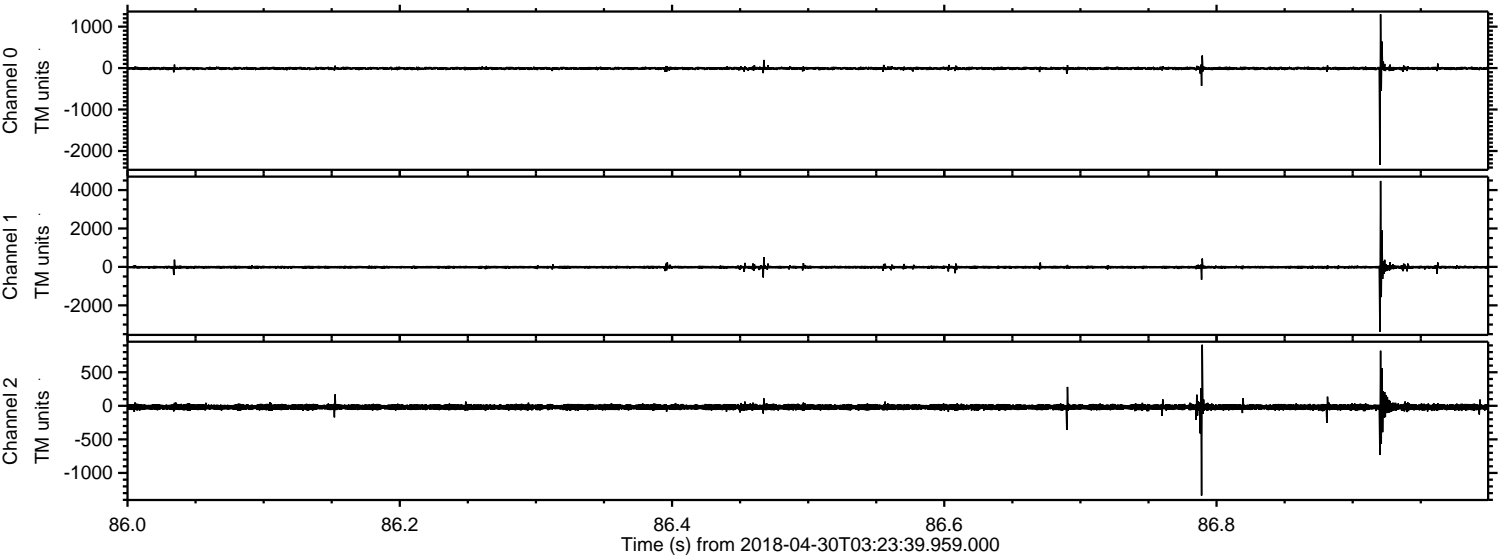
Channel 2
mn: -1067
mx: 1123
 μ : -19.2
 σ : 31.8

ELMAVAN 3D WAVEFORMS (Measured data sampled at 50 kHz) 51000 packets of 144 samples from 2018-04-30T03:23:39.959.000. Part 141/147

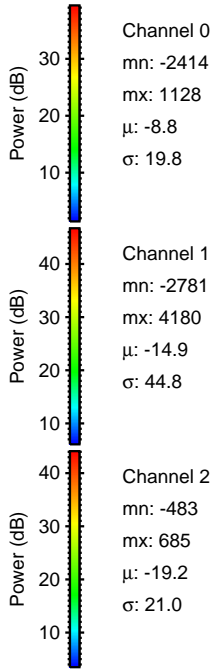
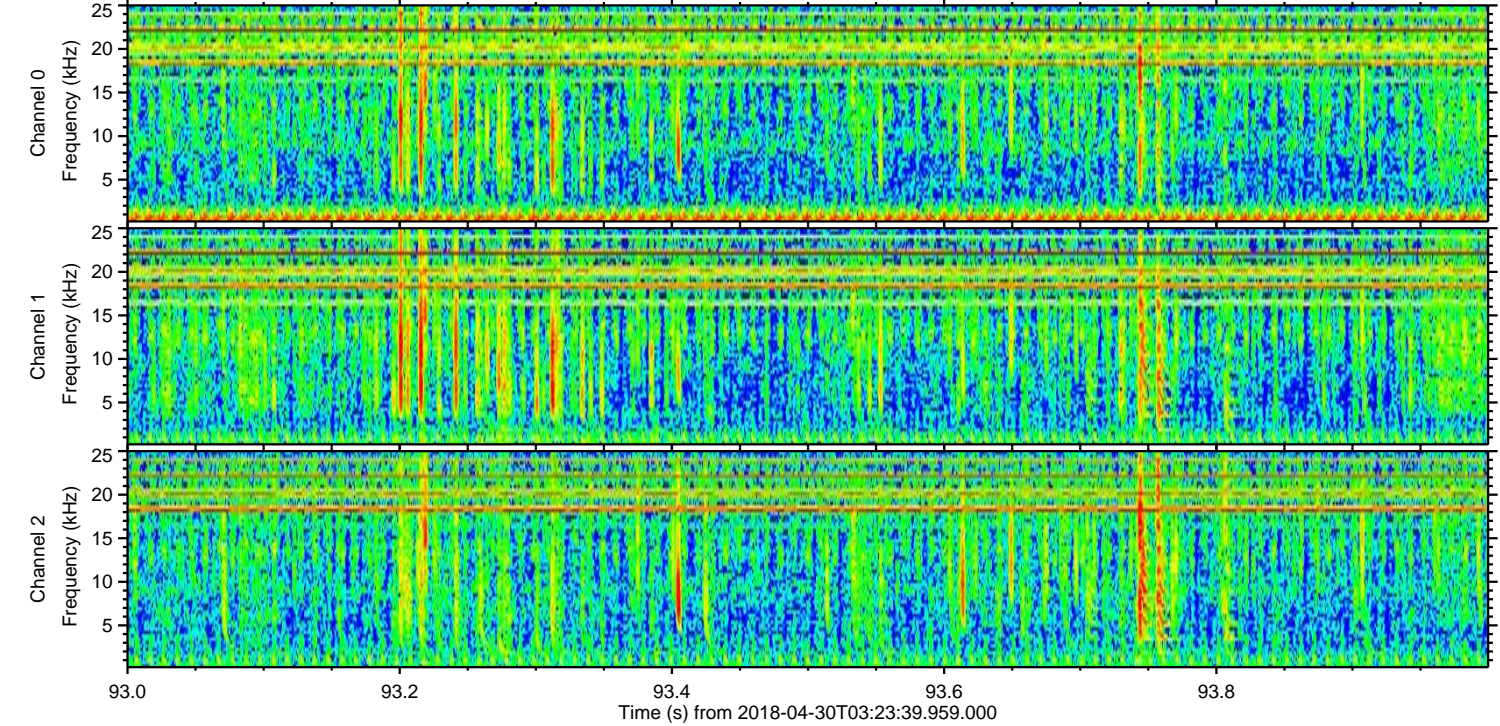
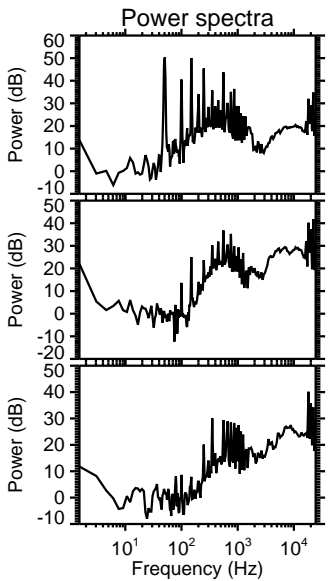
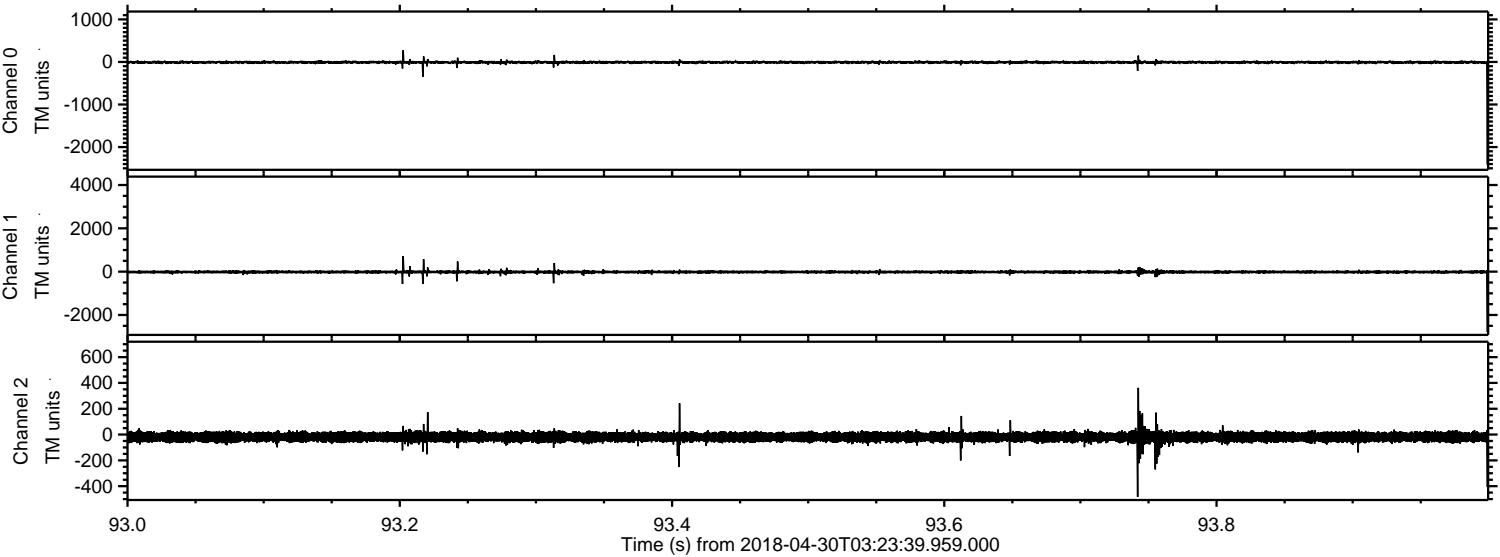
Processed Mon Apr 30 05:32:29 2018 by ELM ver.2012-10-06 from 001__elm20180430_032338__dat00.bin



Processed Mon Apr 30 05:32:30 2018 by ELM ver.2012-10-06 from 001__elm20180430_032338__dat00.bin



Processed Mon Apr 30 05:32:31 2018 by ELM ver.2012-10-06 from 001__elm20180430_032338__dat00.bin

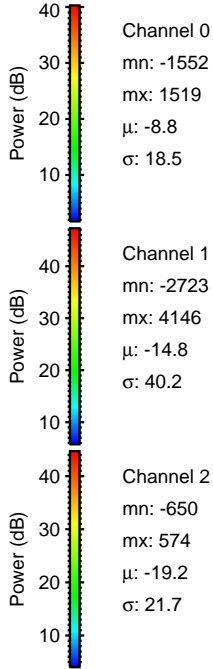
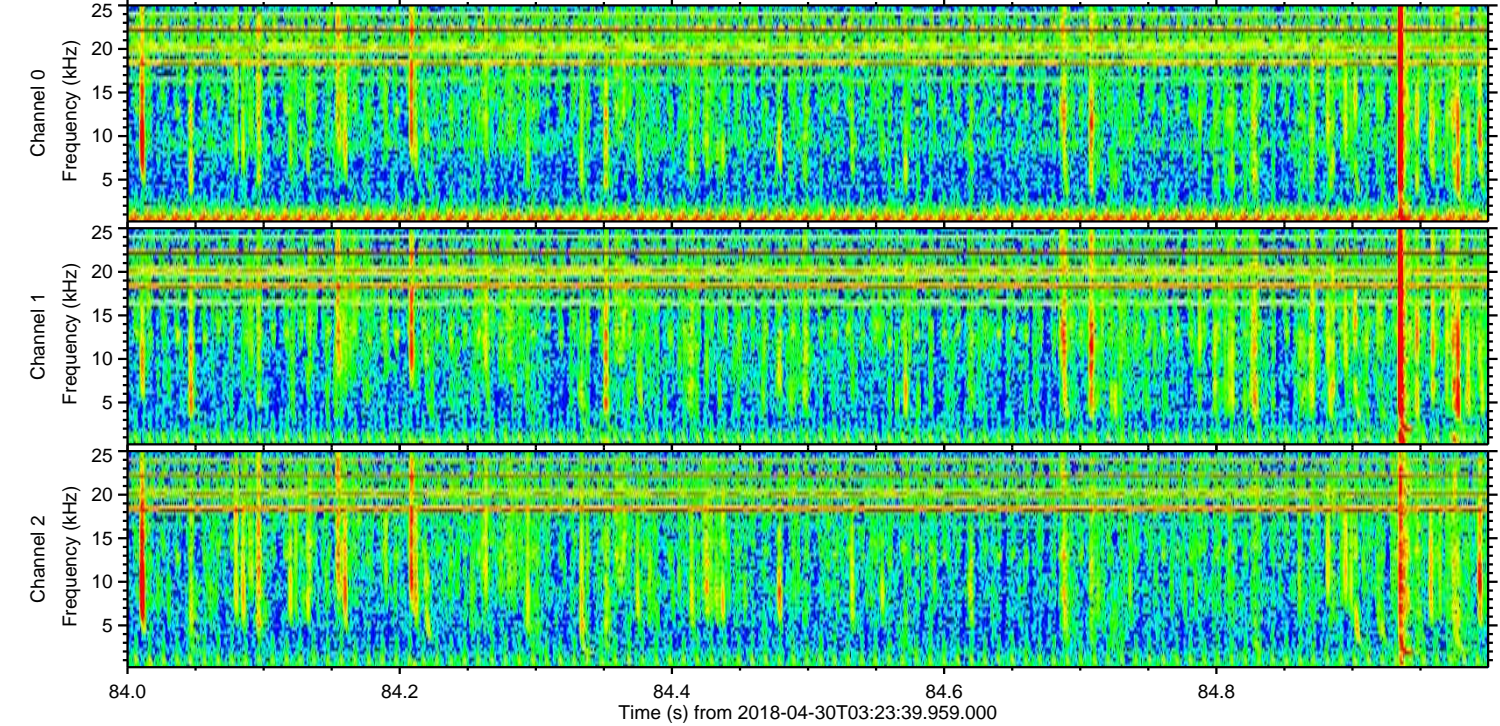
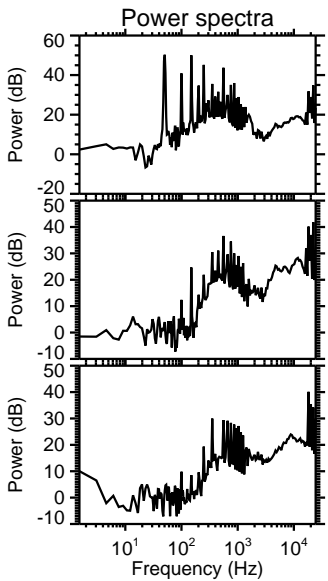
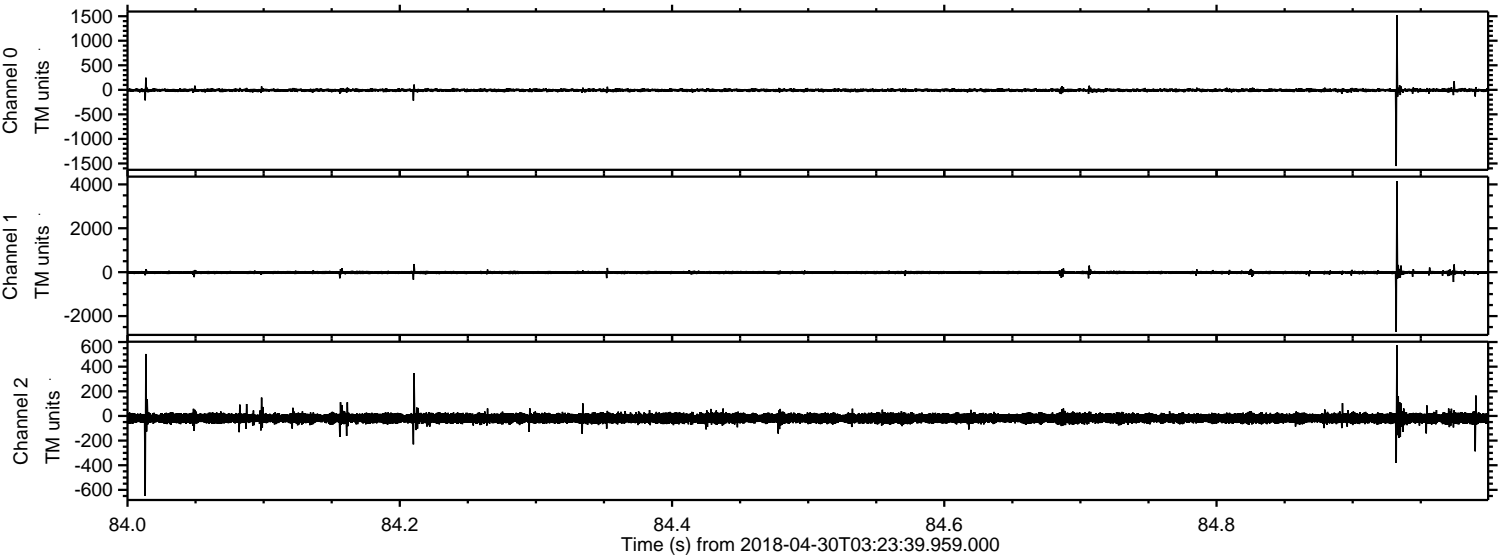


Channel 0
mn: -2414
mx: 1128
 μ : -8.8
 σ : 19.8

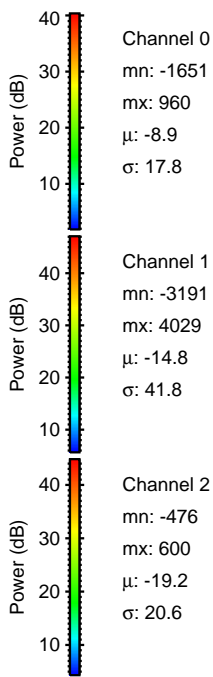
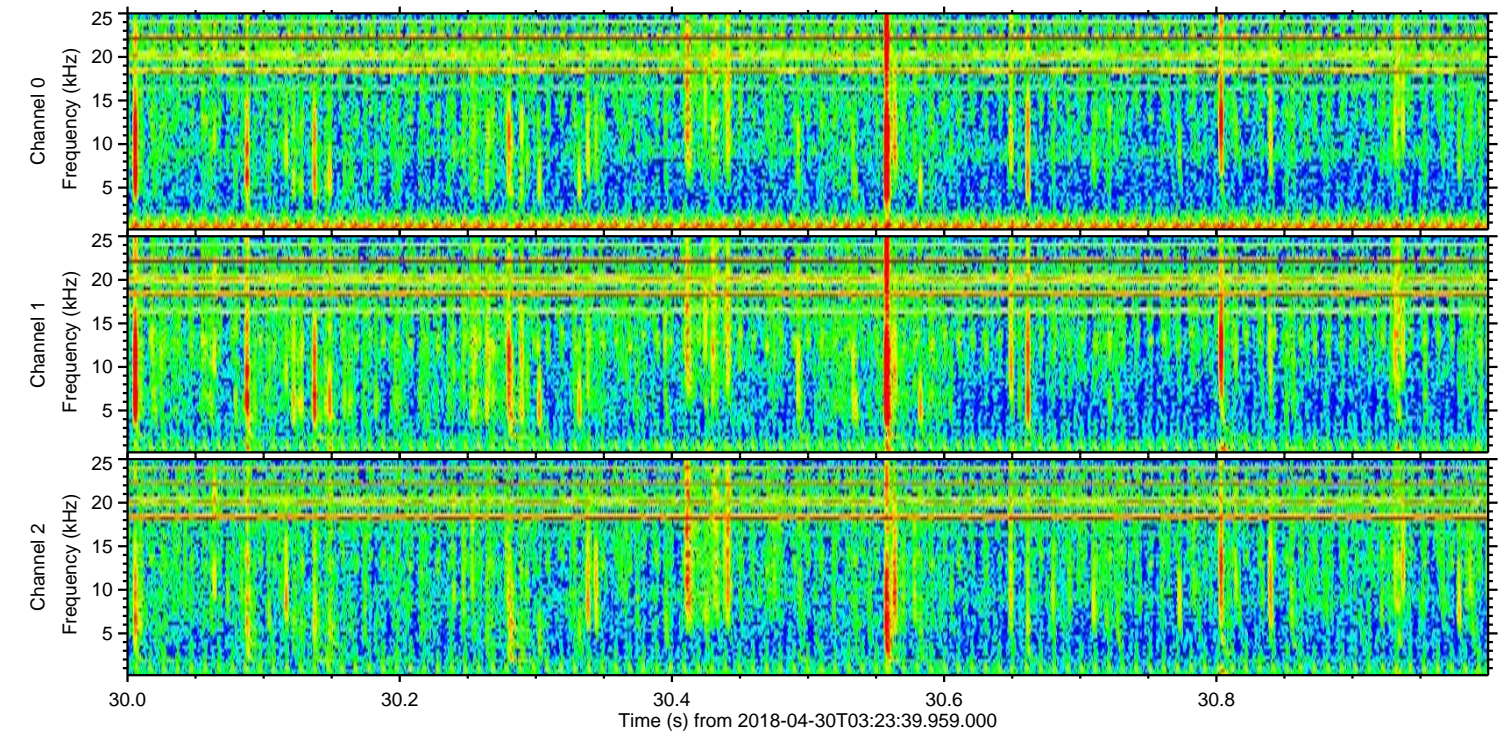
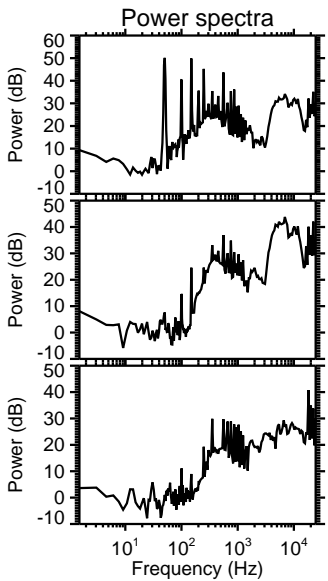
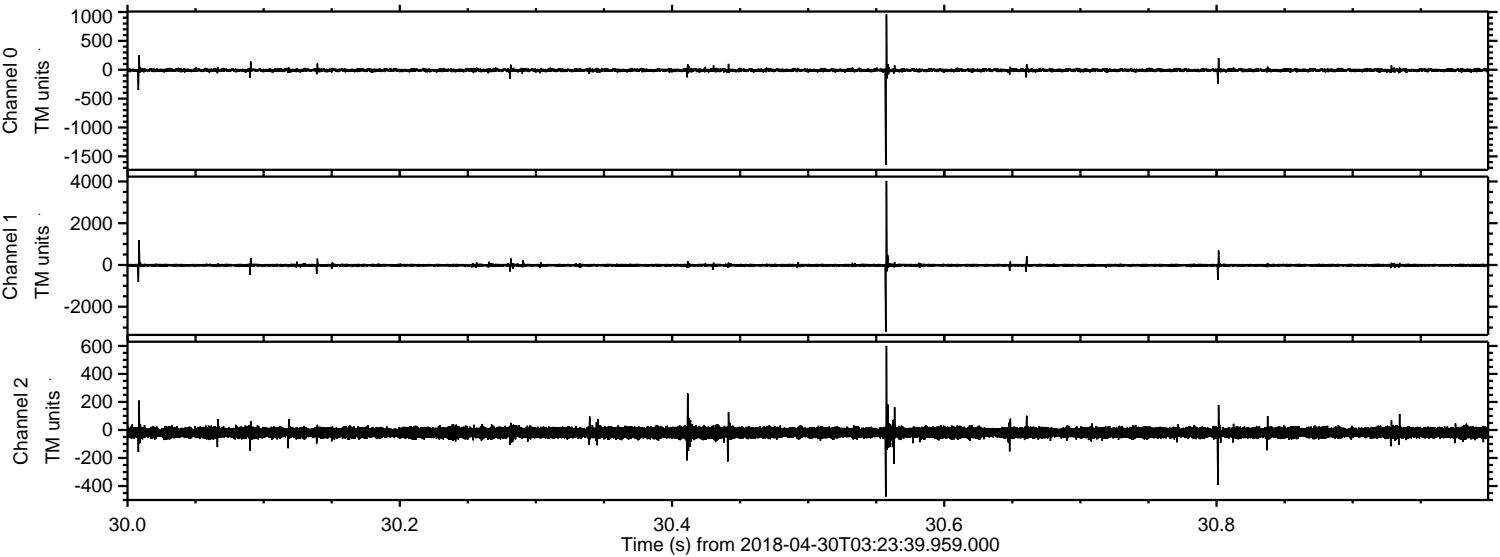
Channel 1
mn: -2781
mx: 4180
 μ : -14.9
 σ : 44.8

Channel 2
mn: -483
mx: 685
 μ : -19.2
 σ : 21.0

Processed Mon Apr 30 05:32:31 2018 by ELM ver.2012-10-06 from 001__elm20180430_032338__dat00.bin



Processed Mon Apr 30 05:32:32 2018 by ELM ver.2012-10-06 from 001__elm20180430_032338__dat00.bin



Processed Mon Apr 30 05:32:33 2018 by ELM ver.2012-10-06 from 001__elm20180430_032338__dat00.bin

