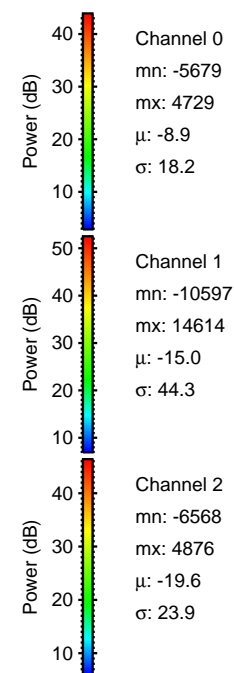
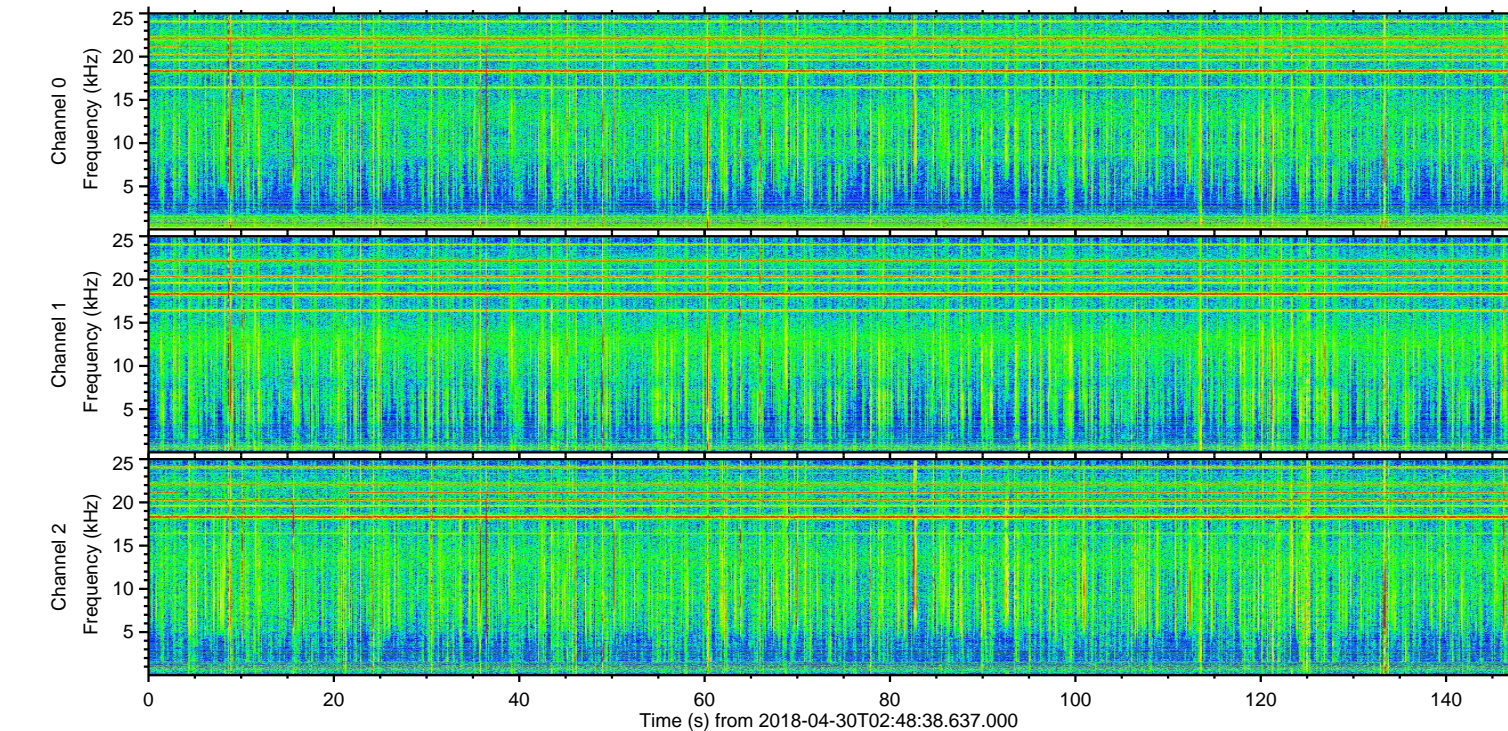
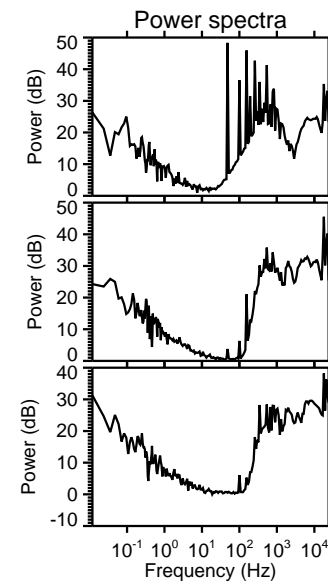
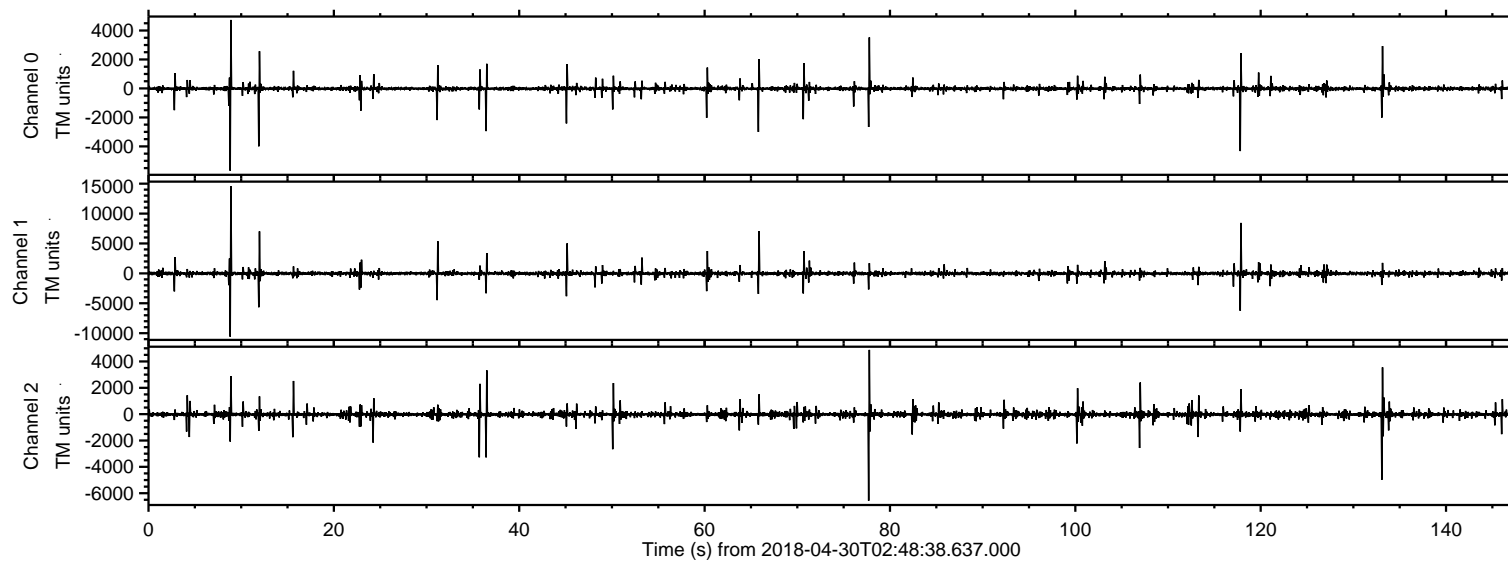
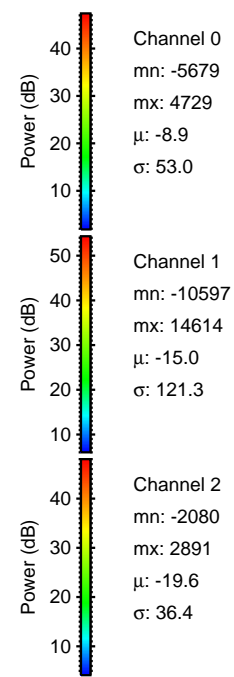
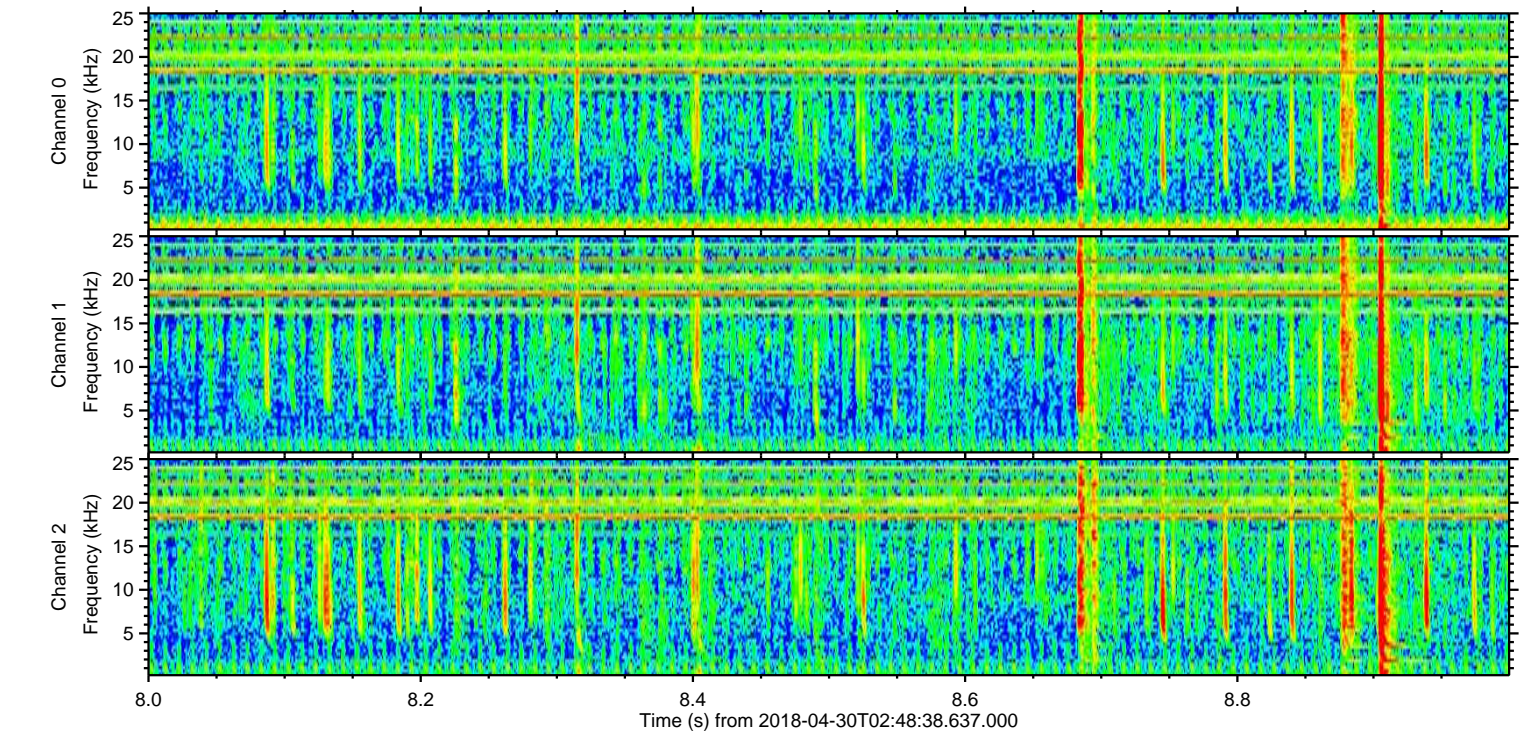
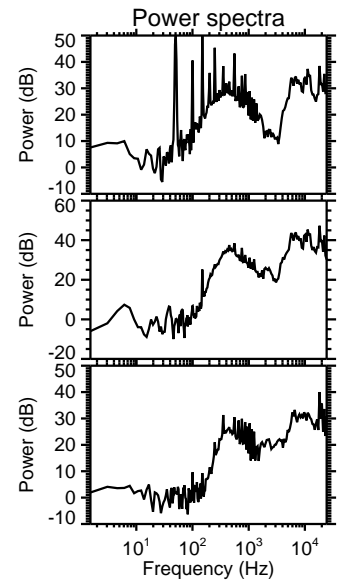
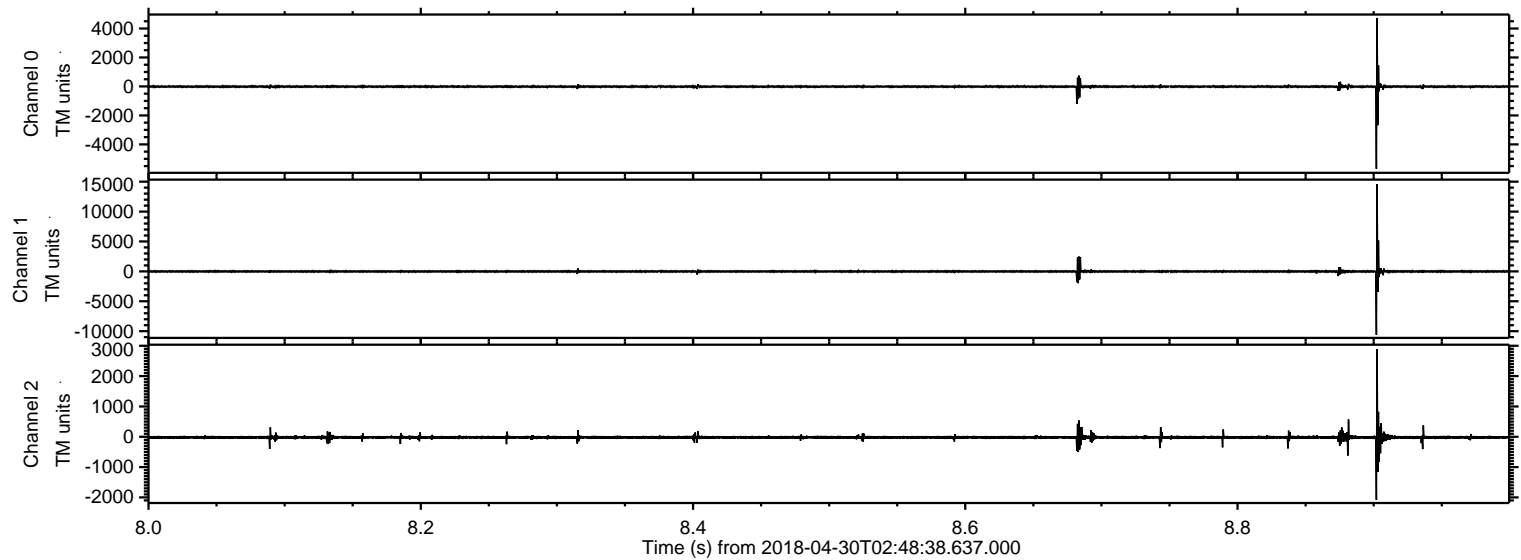


ELMAVAN 3D WAVEFORMS (Measured data sampled at 50 kHz) 51000 packets of 144 samples from 2018-04-30T02:48:38.637.000.

Processed Mon Apr 30 04:56:45 2018 by ELM ver.2012-10-06 from 001__elm20180430_024837__dat00.bin

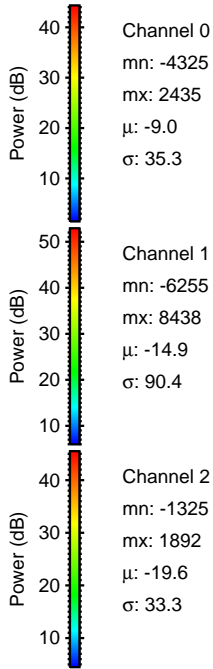
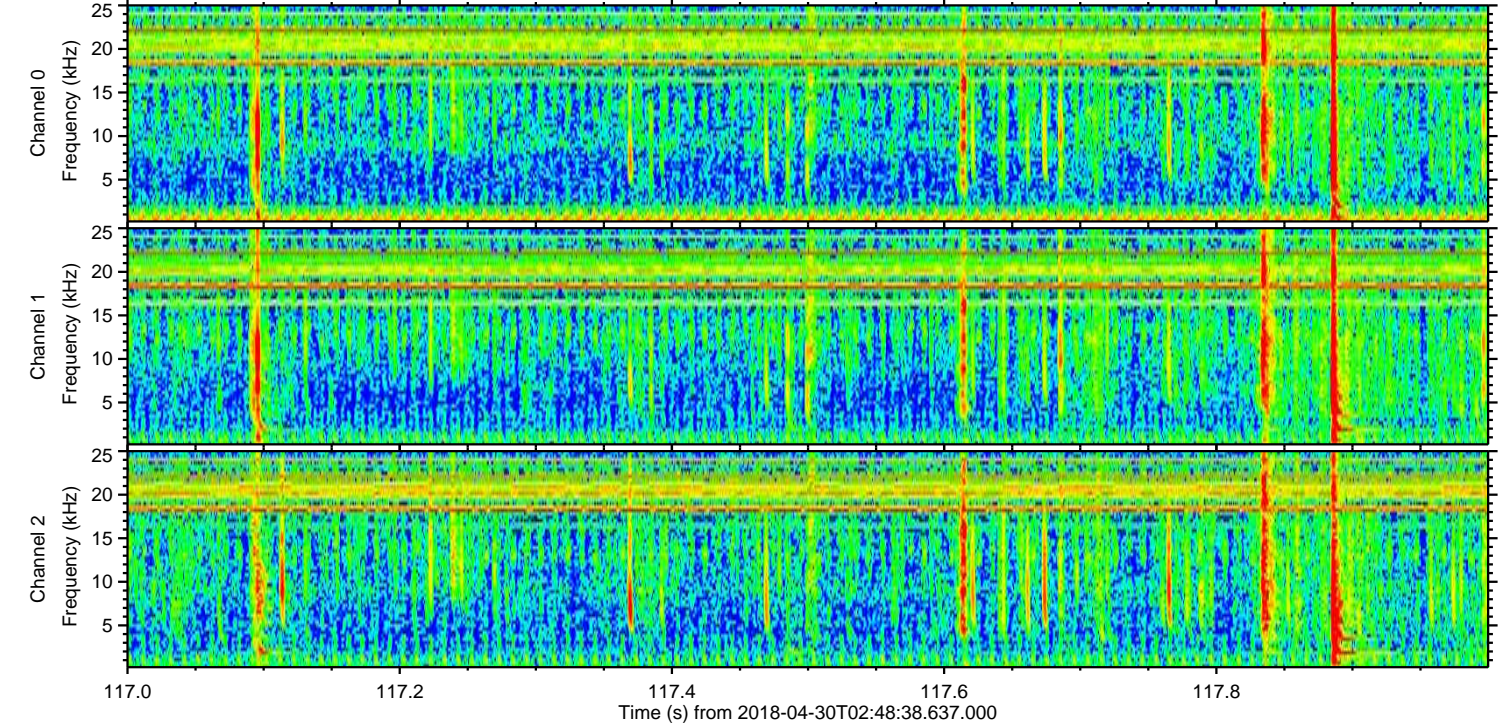
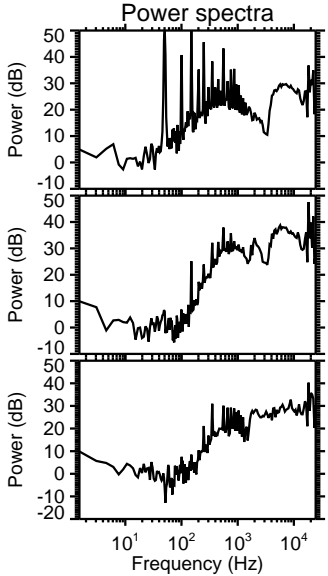
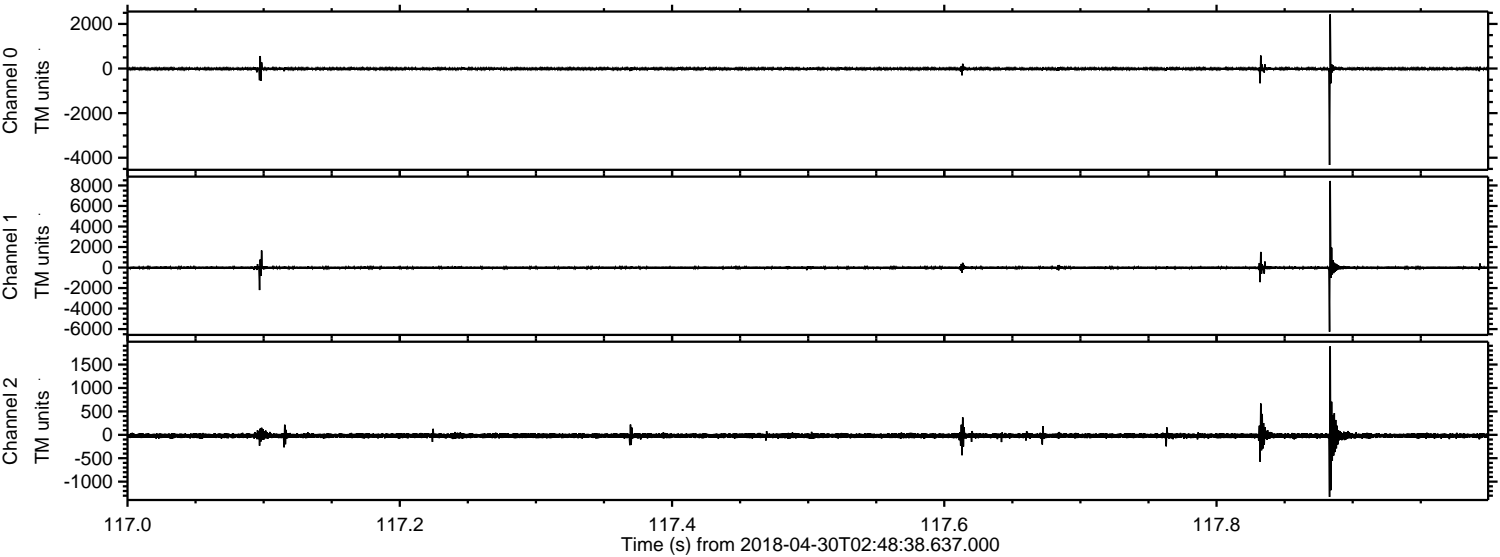


Processed Mon Apr 30 04:56:51 2018 by ELM ver.2012-10-06 from 001__elm20180430_024837__dat00.bin

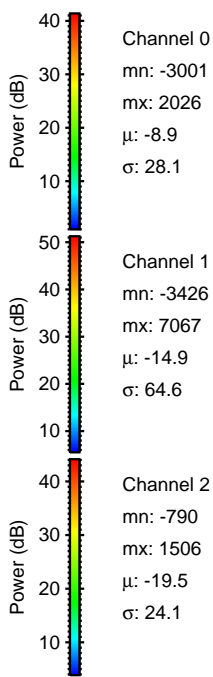
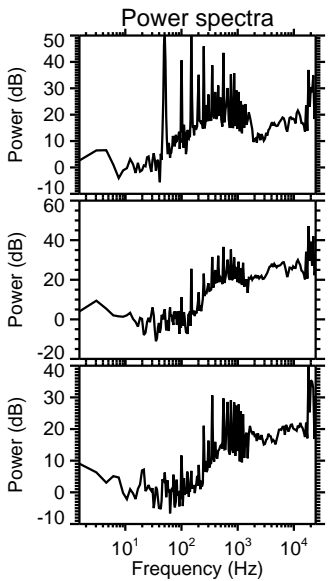
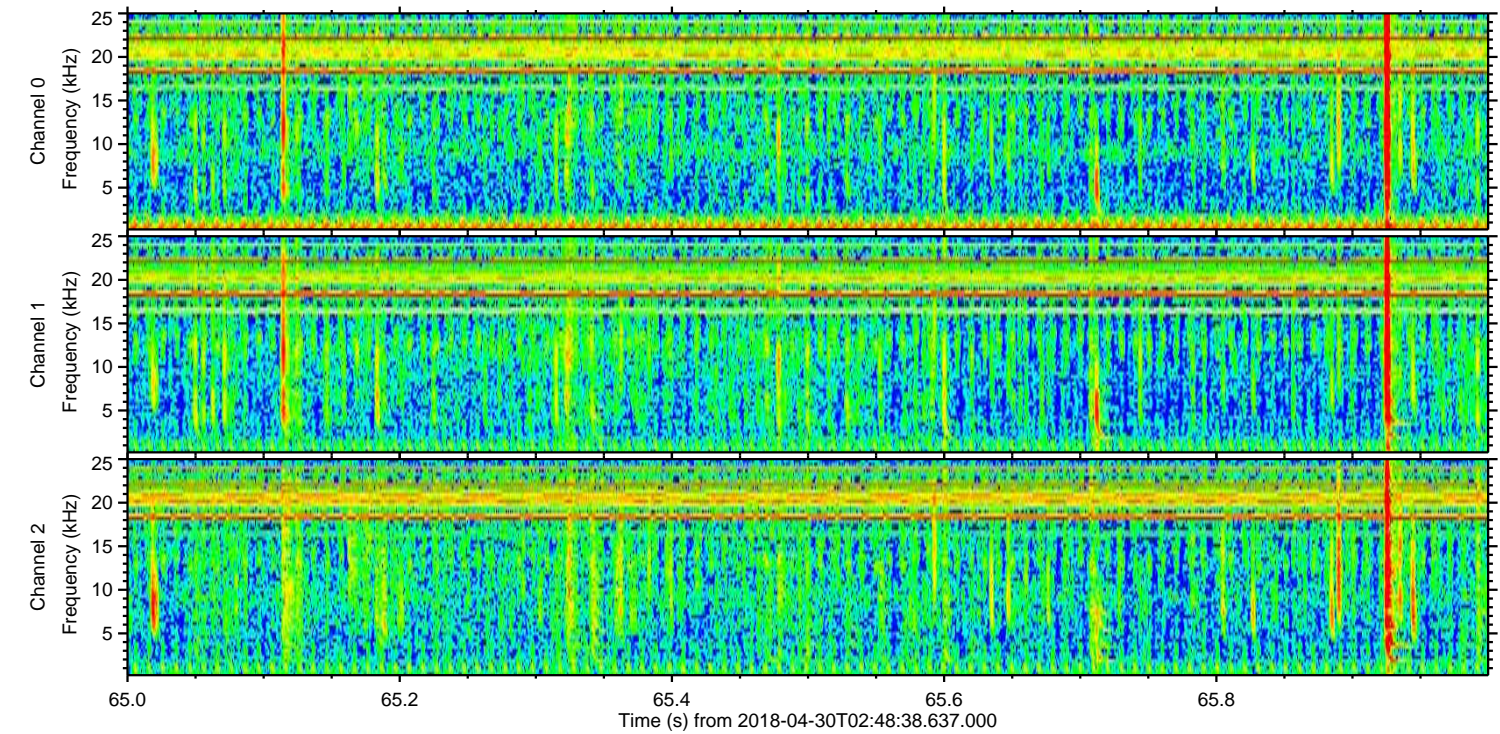
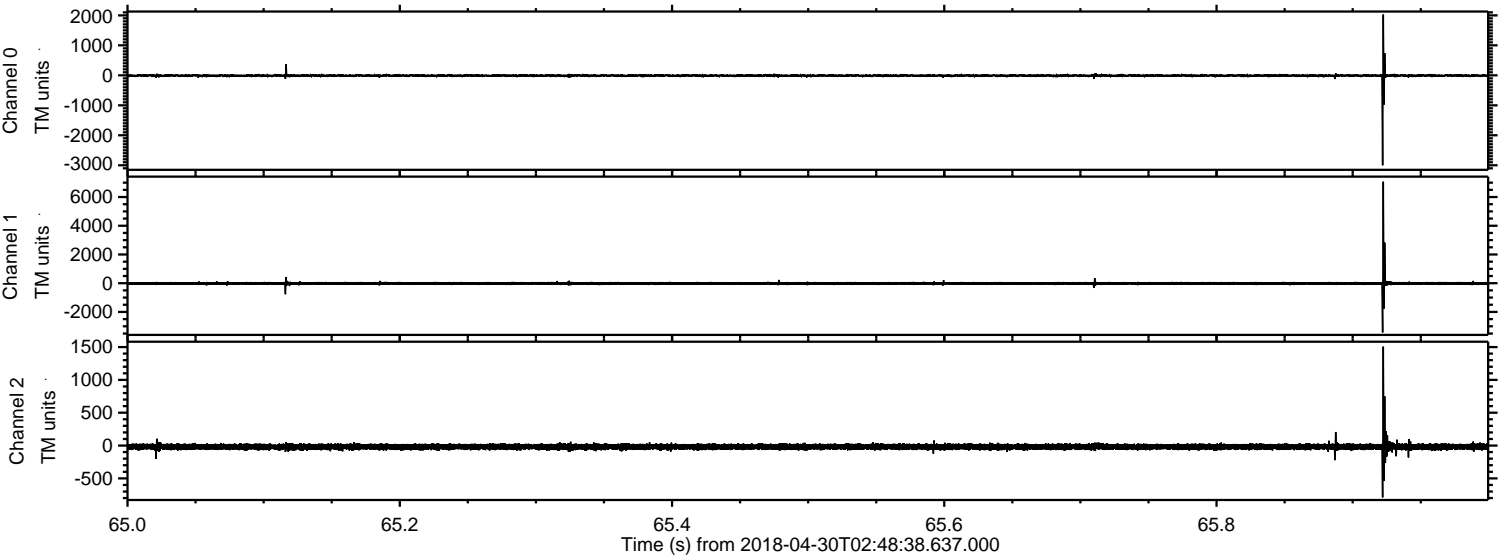


ELMAVAN 3D WAVEFORMS (Measured data sampled at 50 kHz) 51000 packets of 144 samples from 2018-04-30T02:48:38.637.000. Part 118/147

Processed Mon Apr 30 04:56:52 2018 by ELM ver.2012-10-06 from 001__elm20180430_024837__dat00.bin



Processed Mon Apr 30 04:56:53 2018 by ELM ver.2012-10-06 from 001__elm20180430_024837__dat00.bin

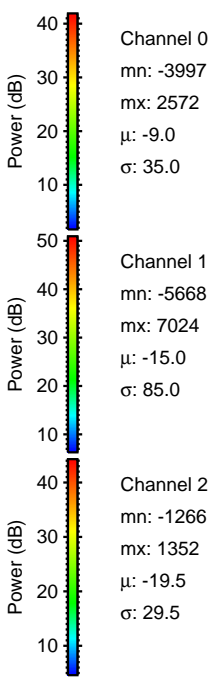
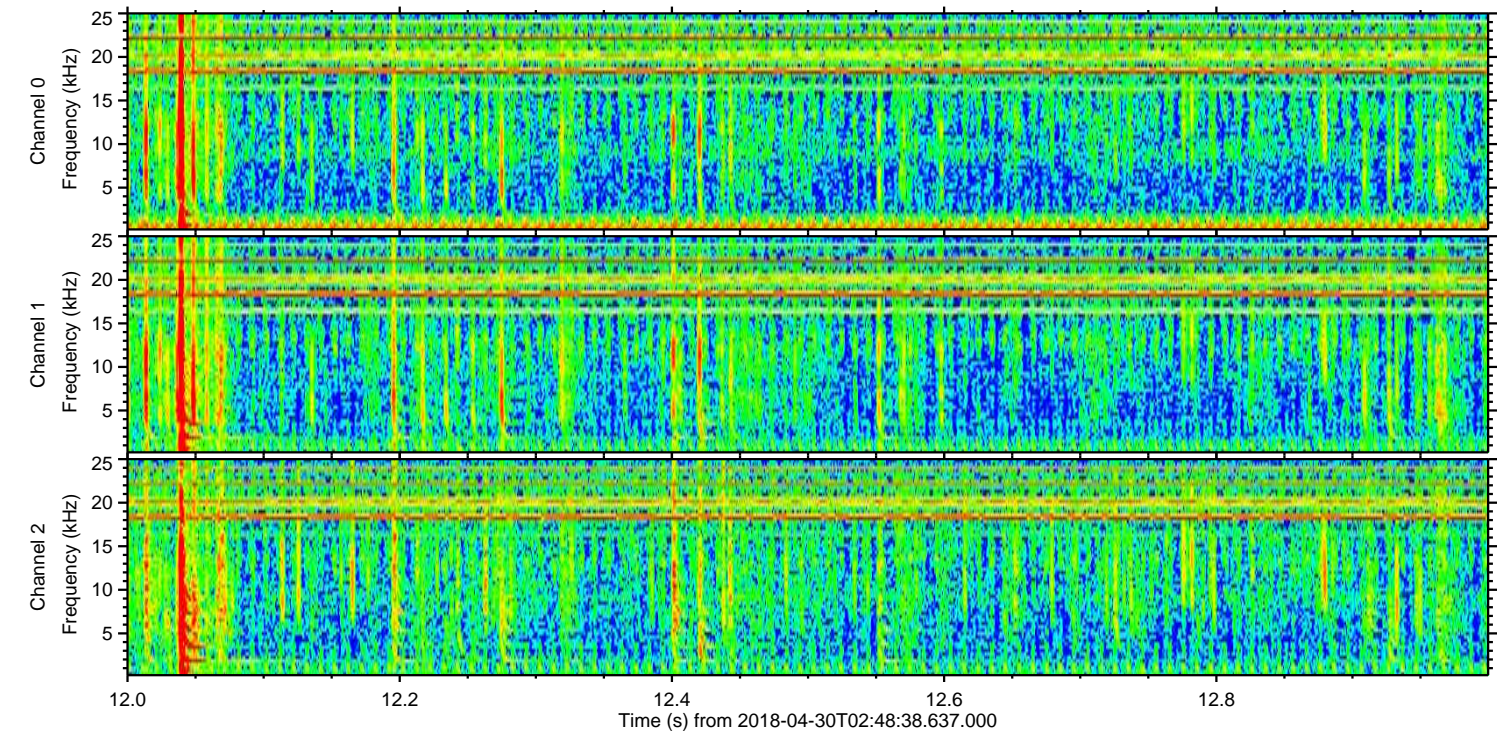
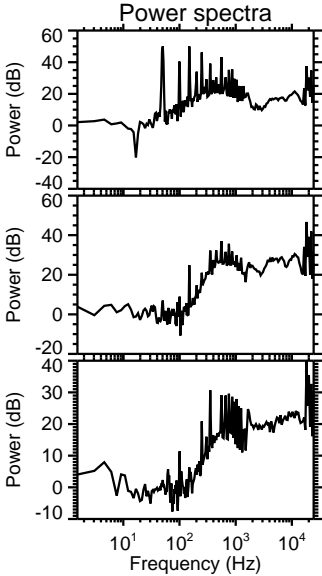
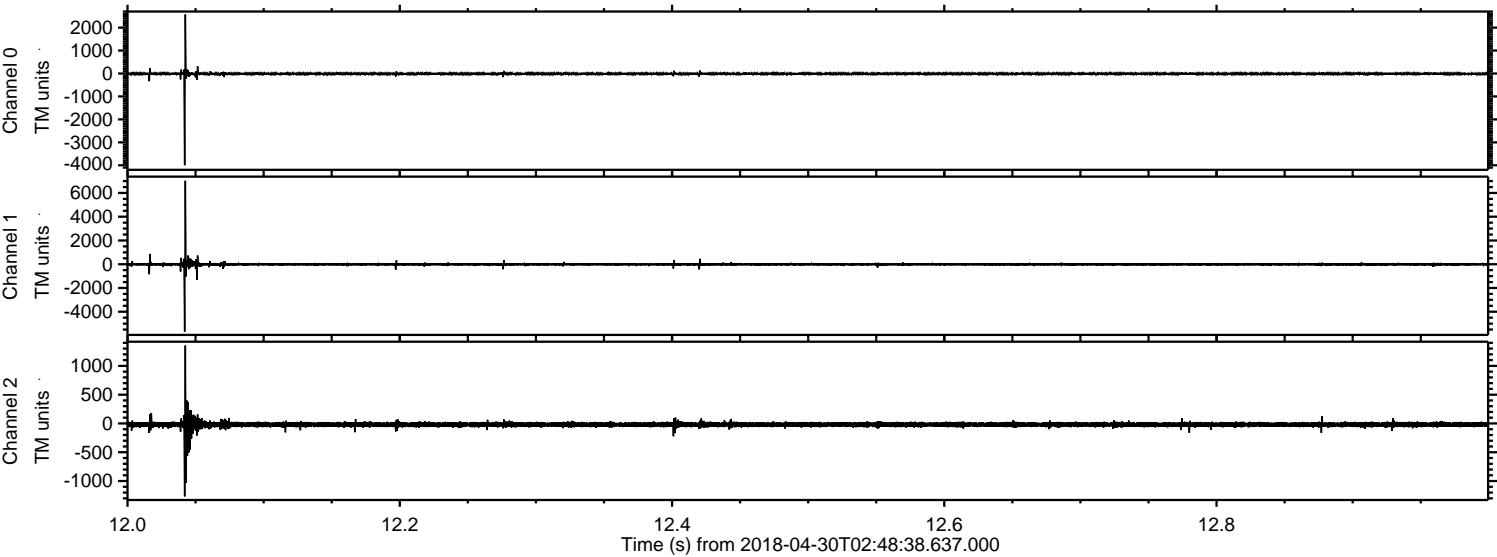


Channel 0
mn: -3001
mx: 2026
 μ : -8.9
 σ : 28.1

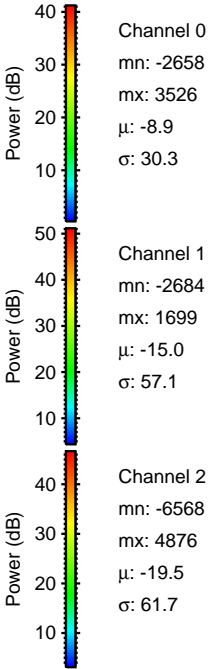
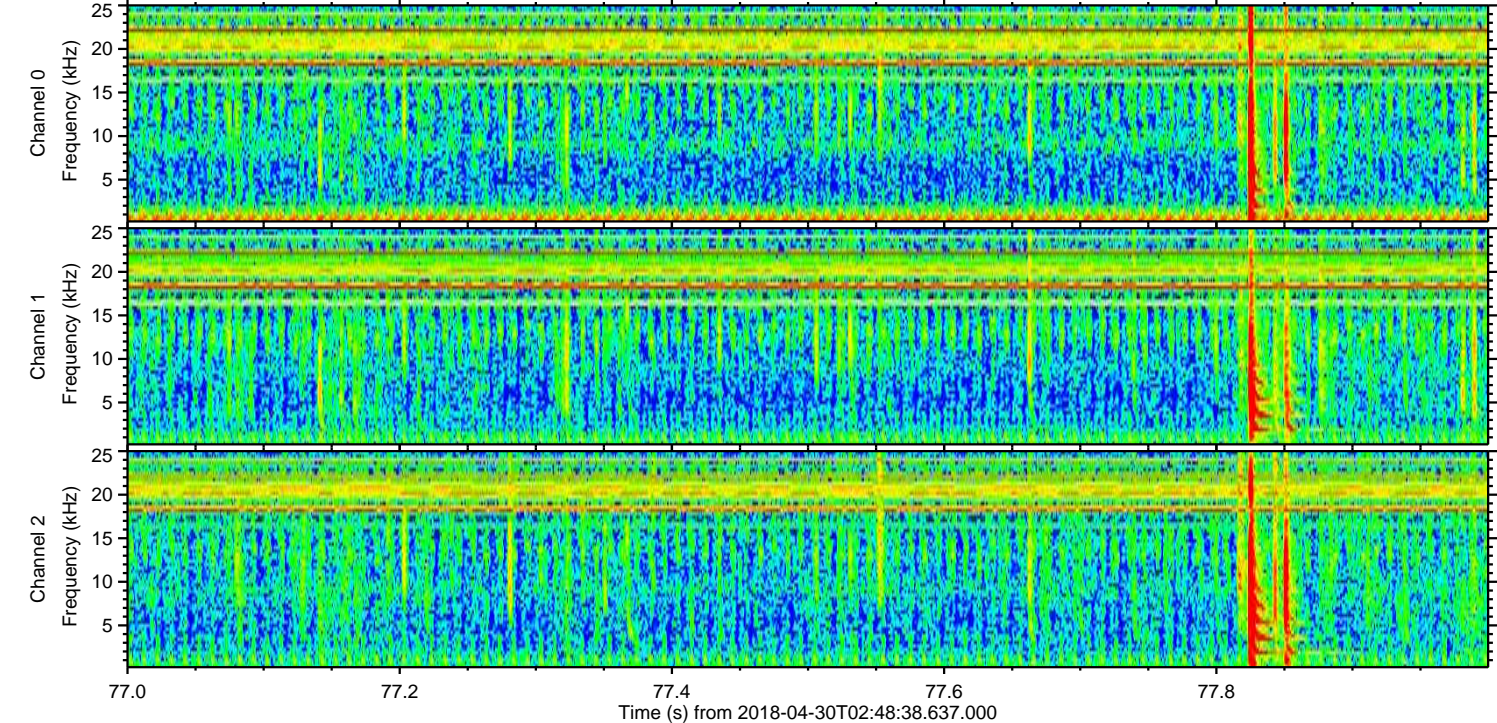
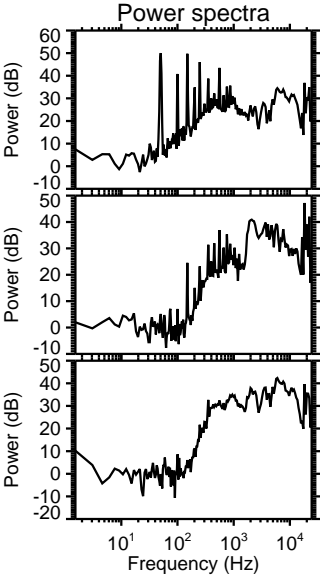
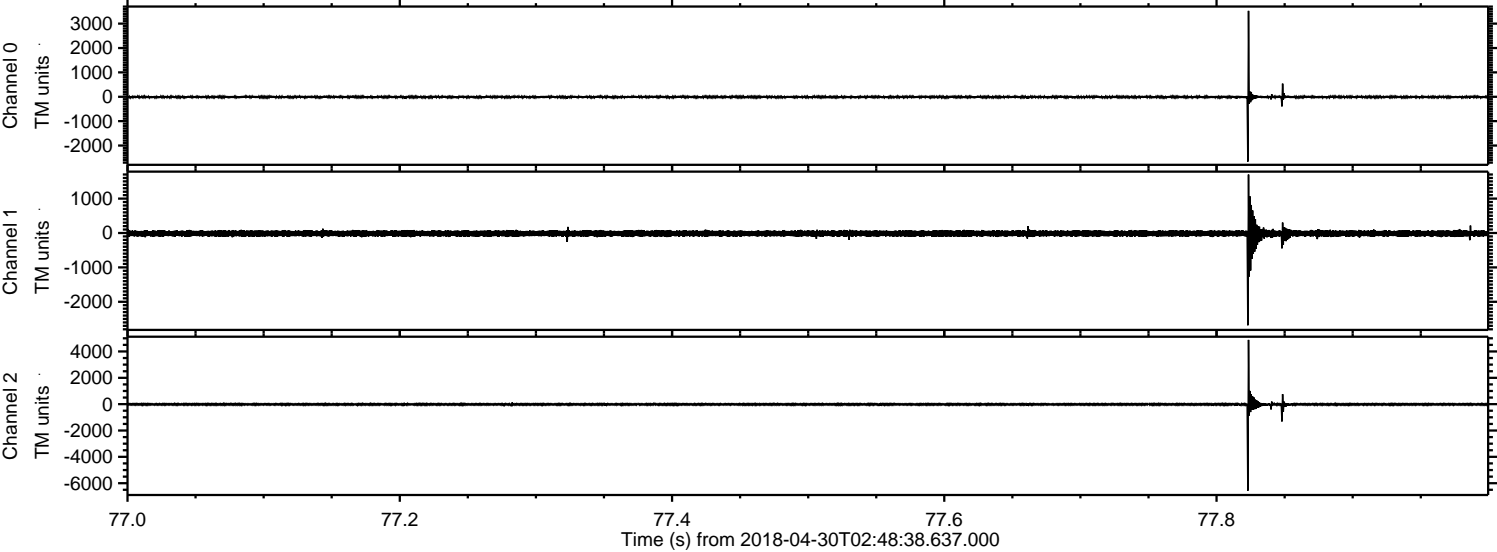
Channel 1
mn: -3426
mx: 7067
 μ : -14.9
 σ : 64.6

Channel 2
mn: -790
mx: 1506
 μ : -19.5
 σ : 24.1

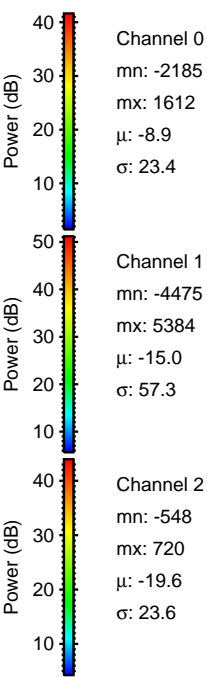
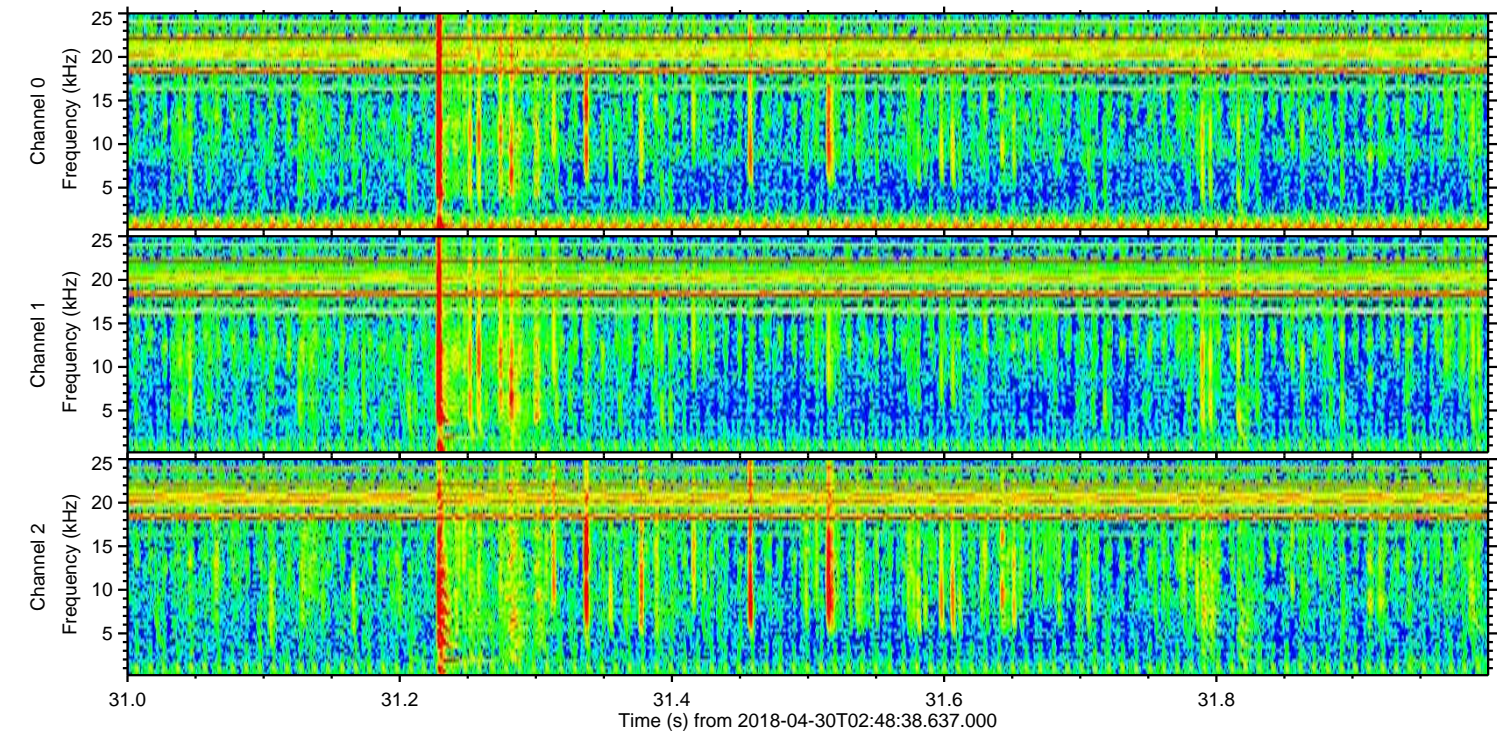
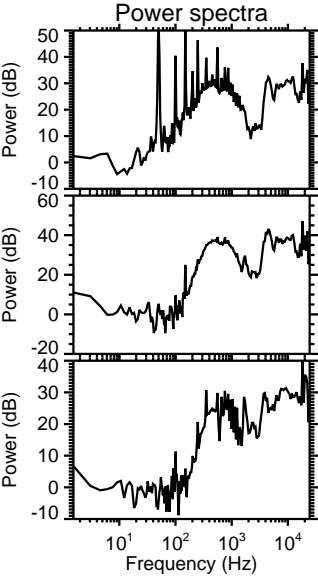
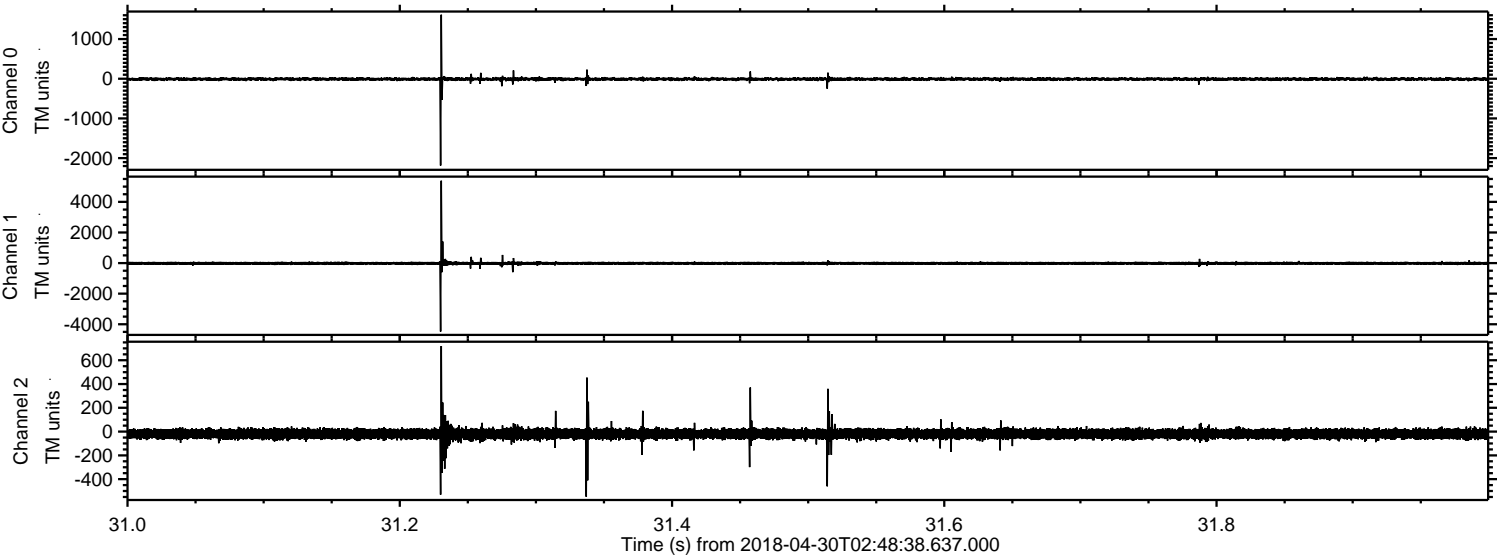
Processed Mon Apr 30 04:56:53 2018 by ELM ver.2012-10-06 from 001__elm20180430_024837__dat00.bin



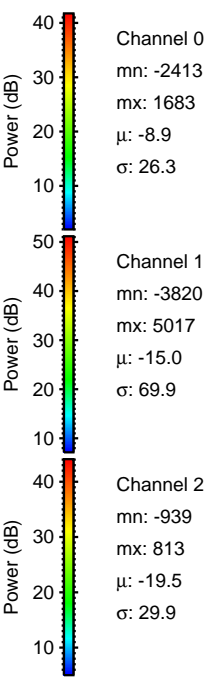
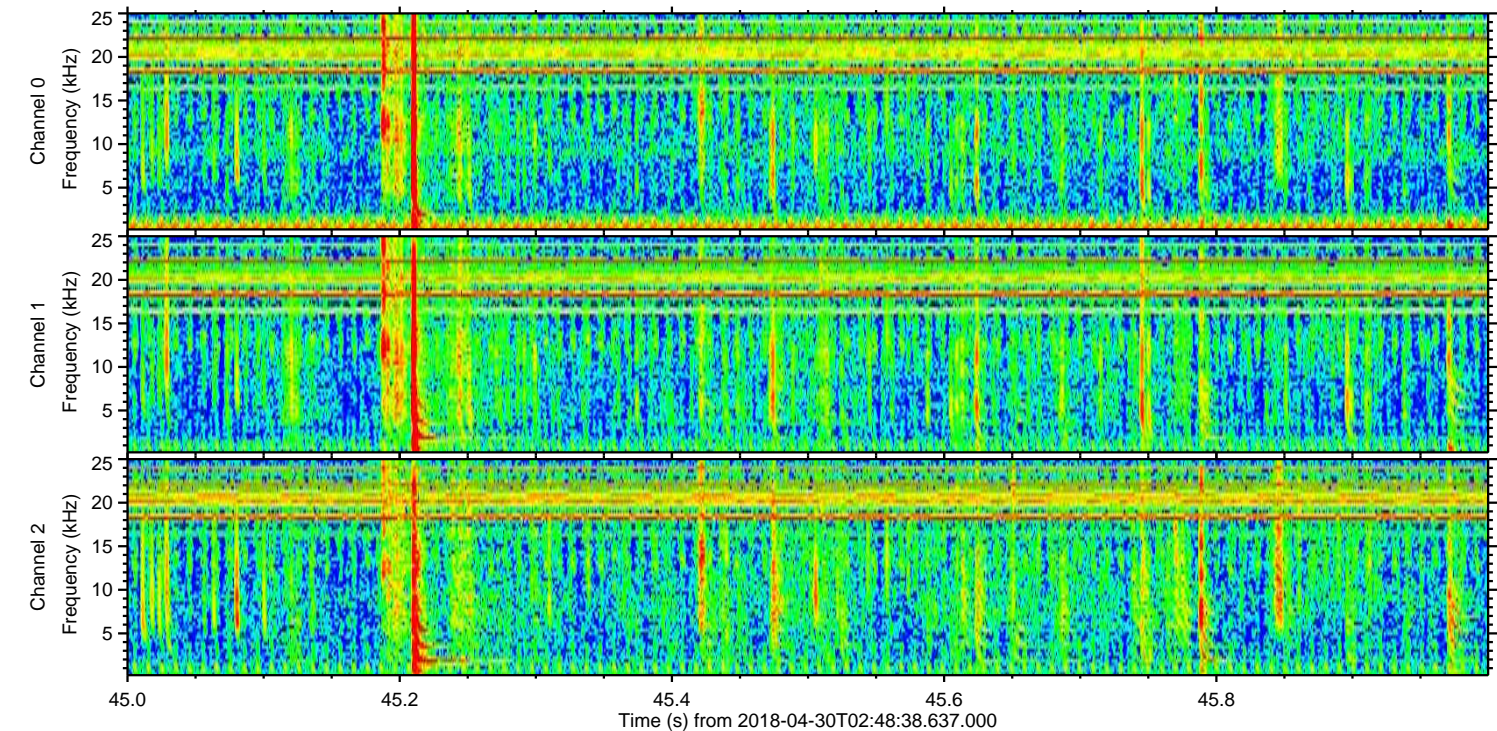
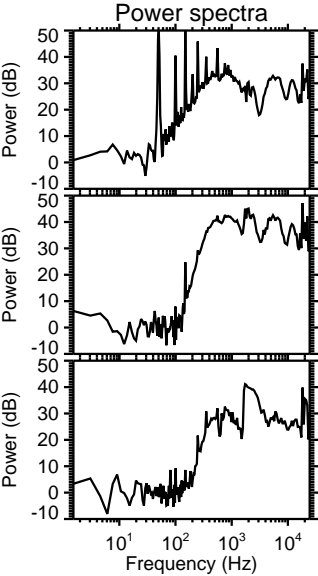
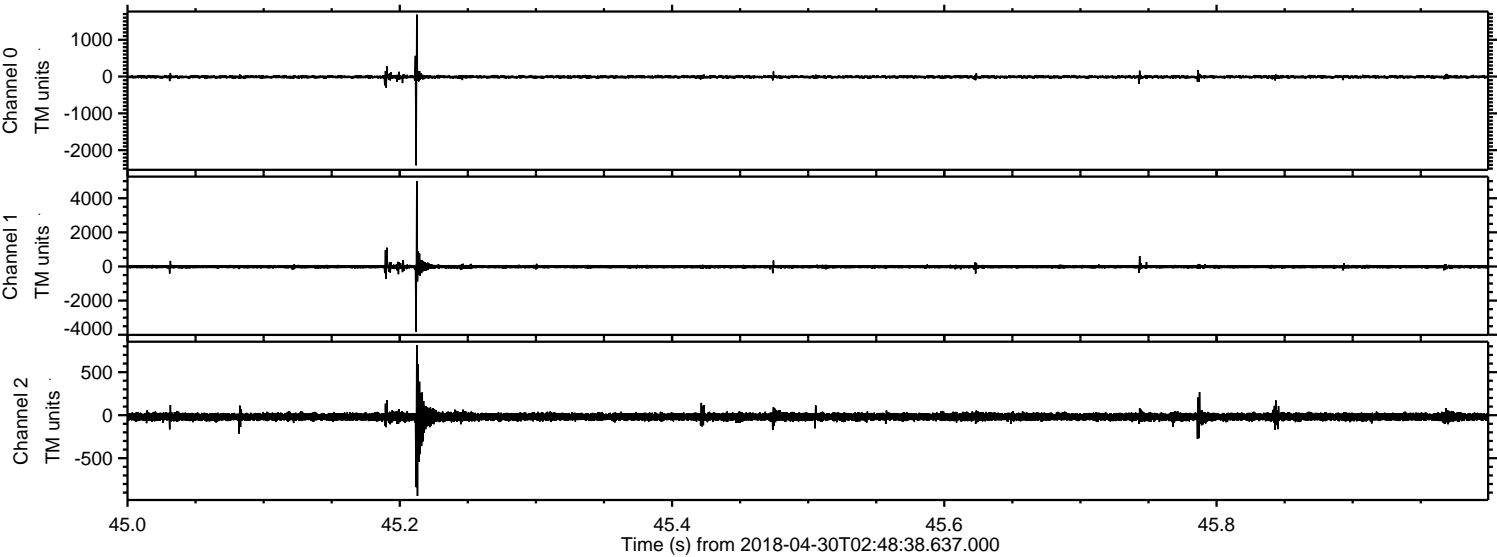
Processed Mon Apr 30 04:56:54 2018 by ELM ver.2012-10-06 from 001__elm20180430_024837__dat00.bin



Processed Mon Apr 30 04:56:55 2018 by ELM ver.2012-10-06 from 001__elm20180430_024837__dat00.bin

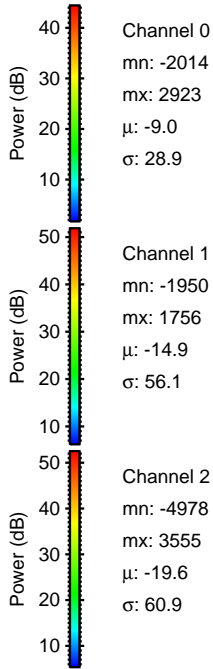
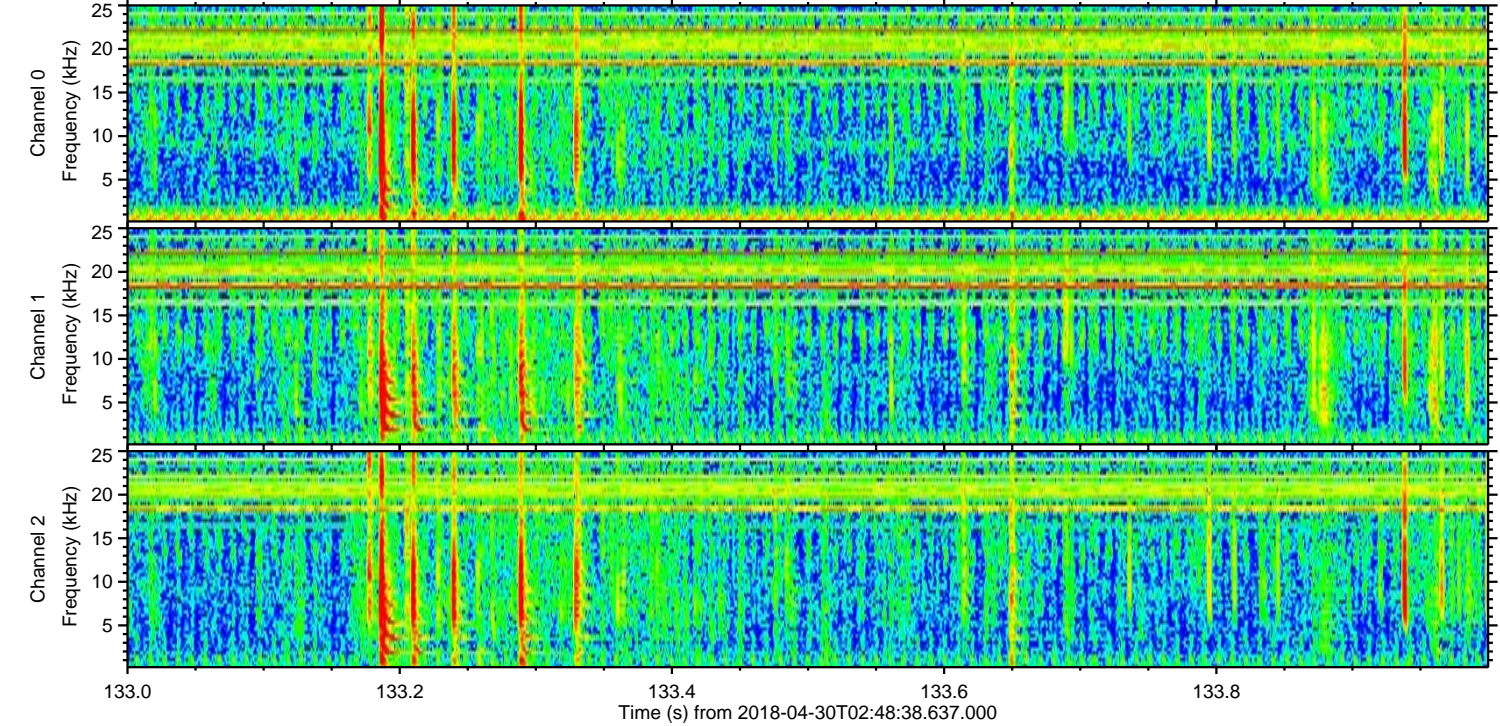
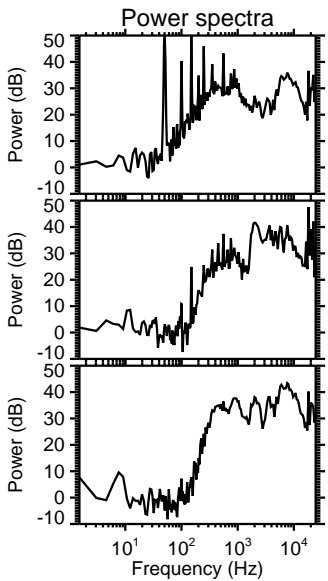
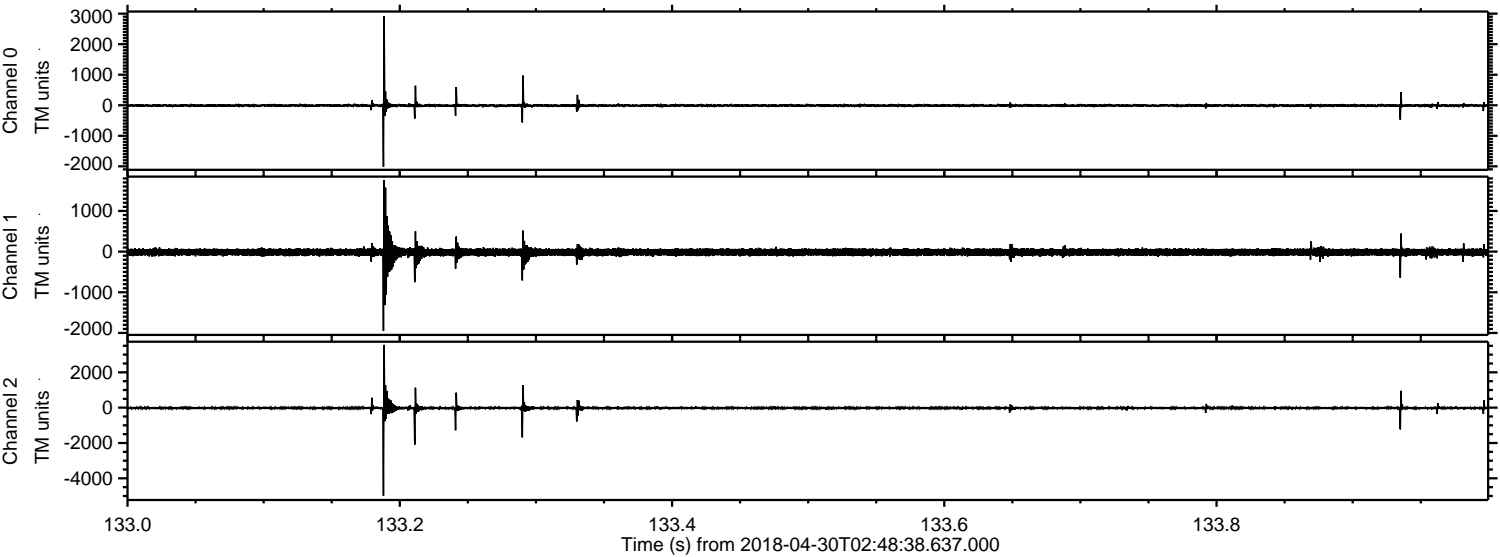


Processed Mon Apr 30 04:56:55 2018 by ELM ver.2012-10-06 from 001__elm20180430_024837__dat00.bin

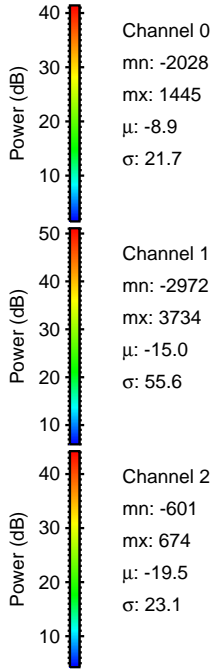
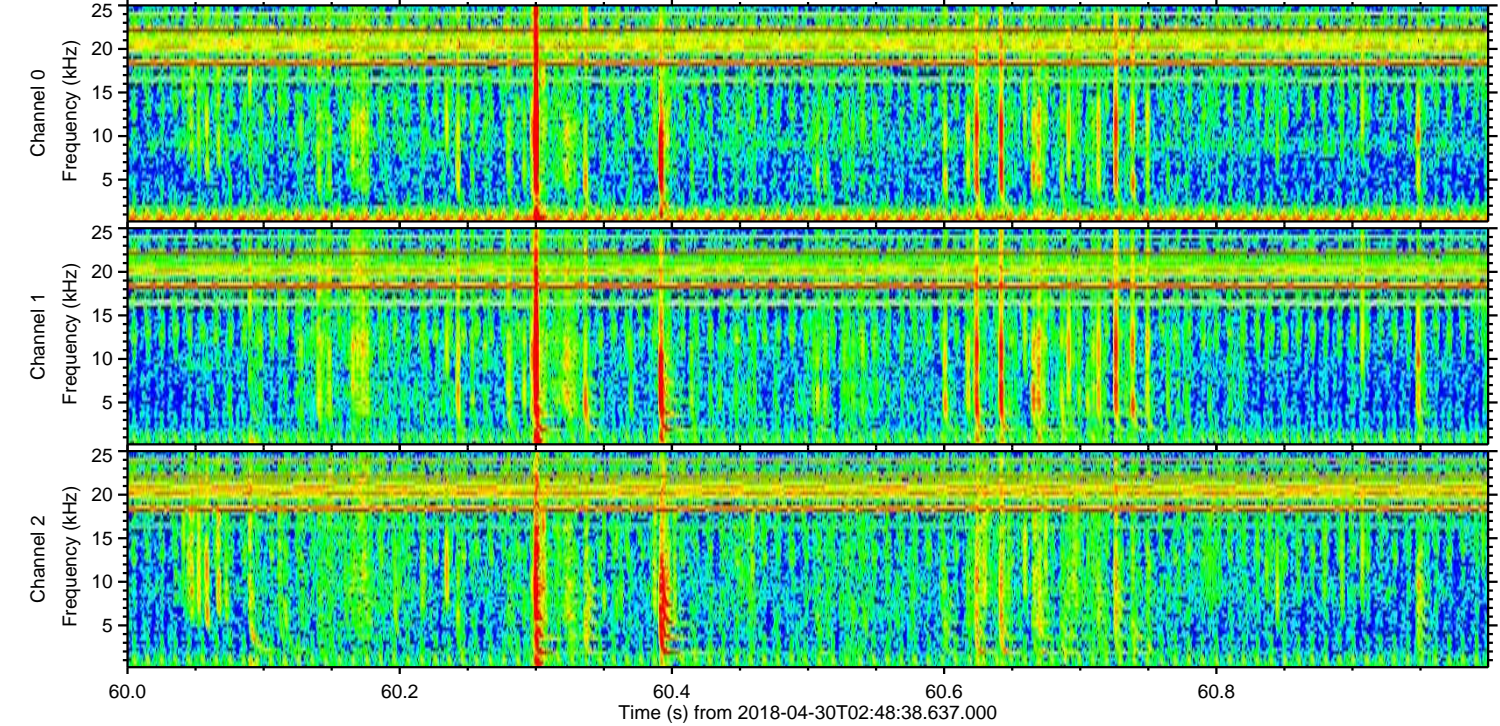
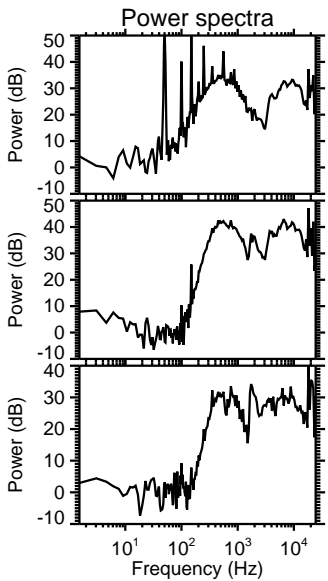
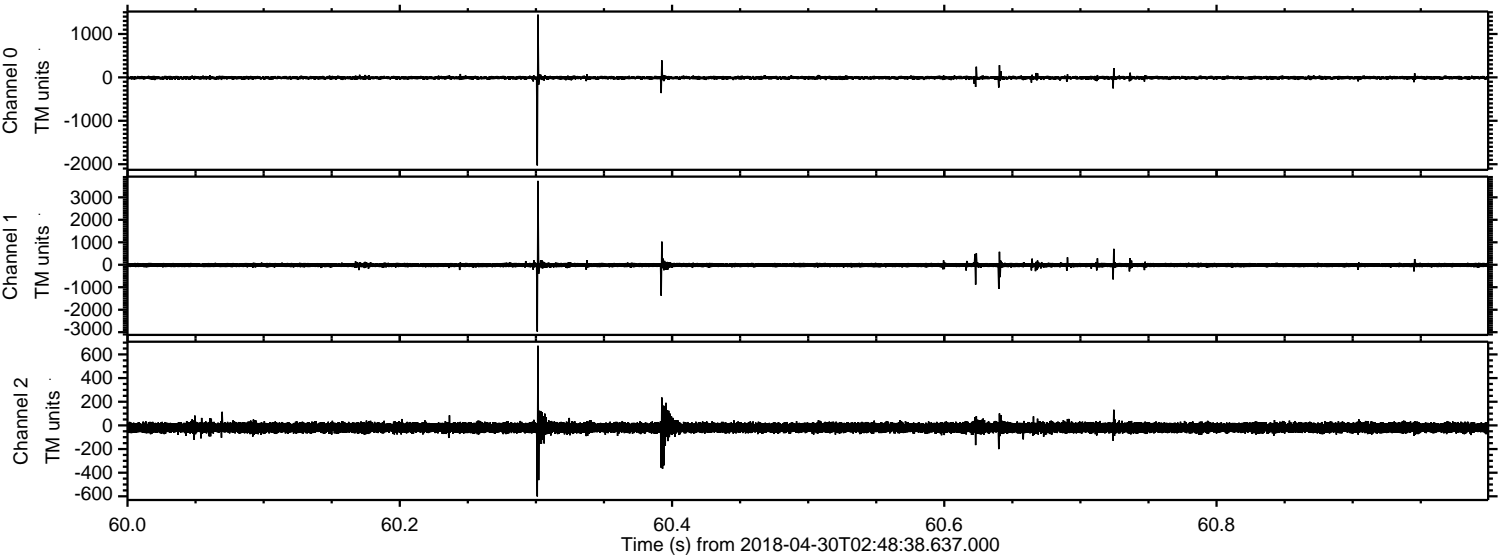


ELMAVAN 3D WAVEFORMS (Measured data sampled at 50 kHz) 51000 packets of 144 samples from 2018-04-30T02:48:38.637.000. Part 134/147

Processed Mon Apr 30 04:56:56 2018 by ELM ver.2012-10-06 from 001__elm20180430_024837__dat00.bin



Processed Mon Apr 30 04:56:57 2018 by ELM ver.2012-10-06 from 001__elm20180430_024837__dat00.bin



Channel 0
mn: -2028
mx: 1445
 μ : -8.9
 σ : 21.7

Channel 1
mn: -2972
mx: 3734
 μ : -15.0
 σ : 55.6

Channel 2
mn: -601
mx: 674
 μ : -19.5
 σ : 23.1

Processed Mon Apr 30 04:56:57 2018 by ELM ver.2012-10-06 from 001__elm20180430_024837__dat00.bin

